

VERANO SOUTH POD E PLAT NO. 2
Preliminary Subdivision Plat
and Construction Plans
(P20-232)

City Council Meeting
February 22, 2020
Holly Price, AICP, Planner III



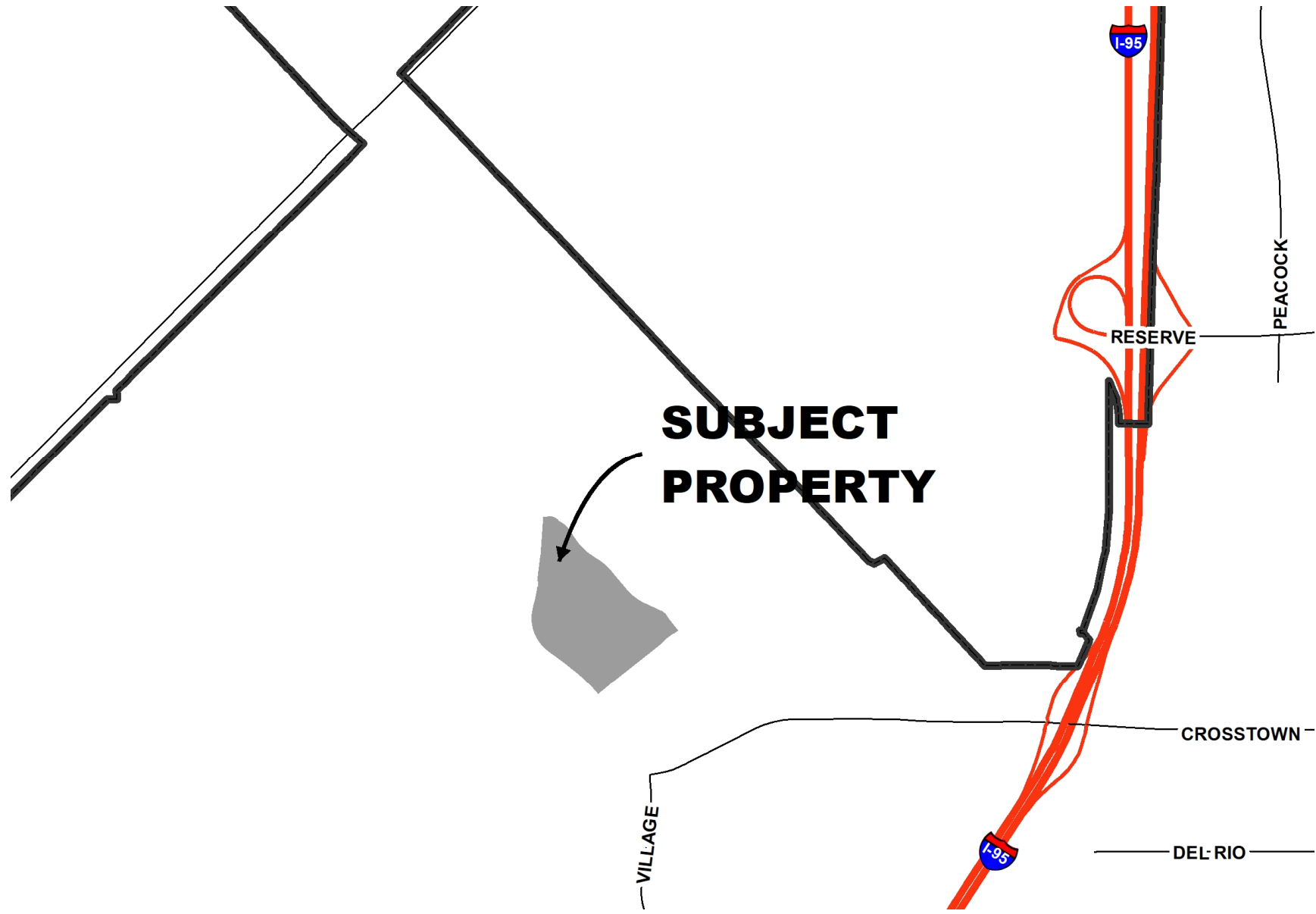
The application is for a Preliminary Plat with Construction Plans that is 75.98 acres in area. The project proposes 215 single-family lots and 1 lake along with roads and utility infrastructure.

Applicant: Coteleur-Hearing / Daniel Sorrow
Property Owner: Verano Development, LLC
Future Land Use: RGC (Residential Golf Course)
Zoning: PUD (Planned Unit Development)

REQUESTED APPLICATION

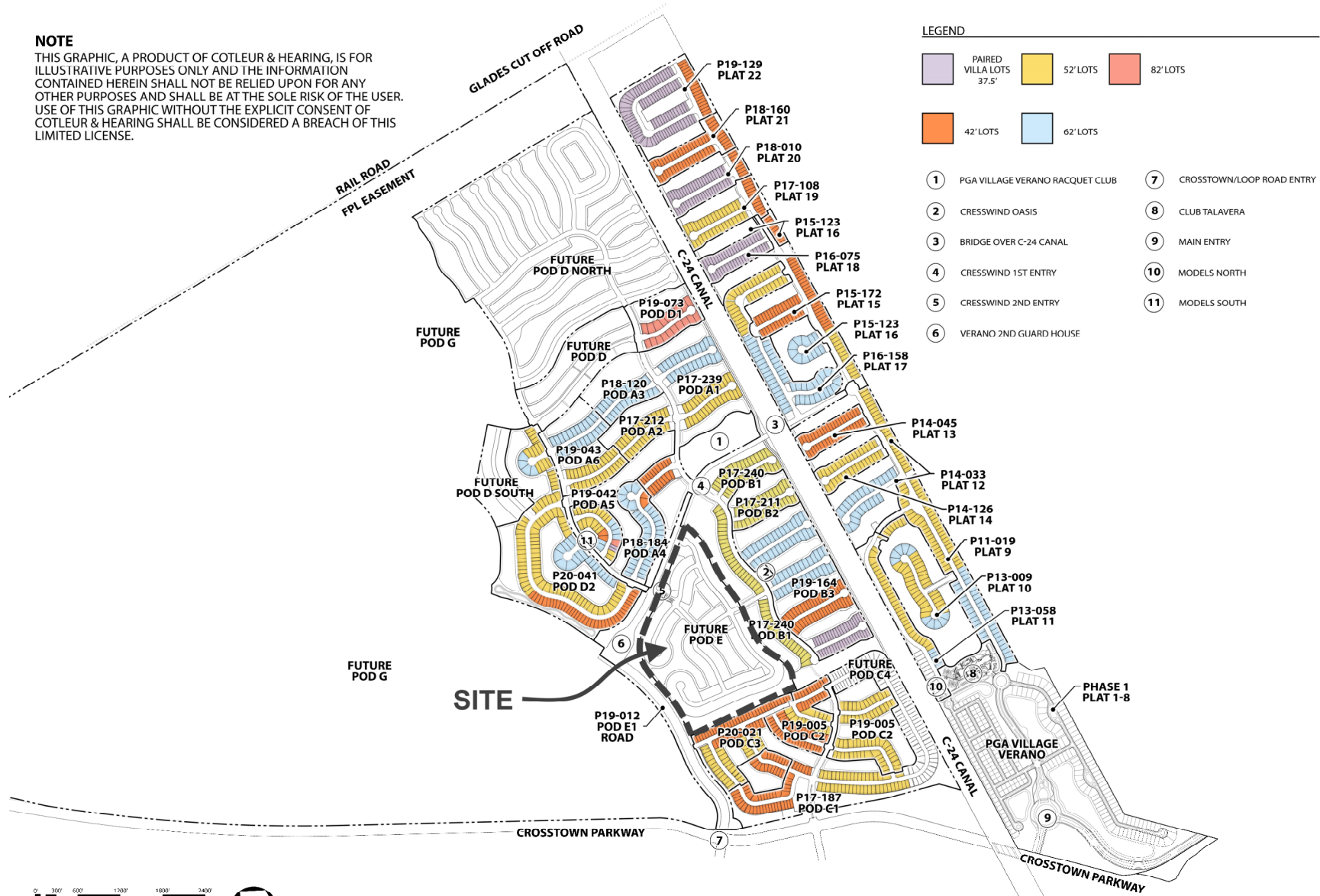
CityofPSL.com



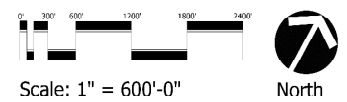


NOTE

THIS GRAPHIC, A PRODUCT OF COTLEUR & HEARING, IS FOR ILLUSTRATIVE PURPOSES ONLY AND THE INFORMATION CONTAINED HEREIN SHALL NOT BE RELIED UPON FOR ANY OTHER PURPOSES AND SHALL BE AT THE SOLE RISK OF THE USER. USE OF THIS GRAPHIC WITHOUT THE EXPLICIT CONSENT OF COTLEUR & HEARING SHALL BE CONSIDERED A BREACH OF THIS LIMITED LICENSE.



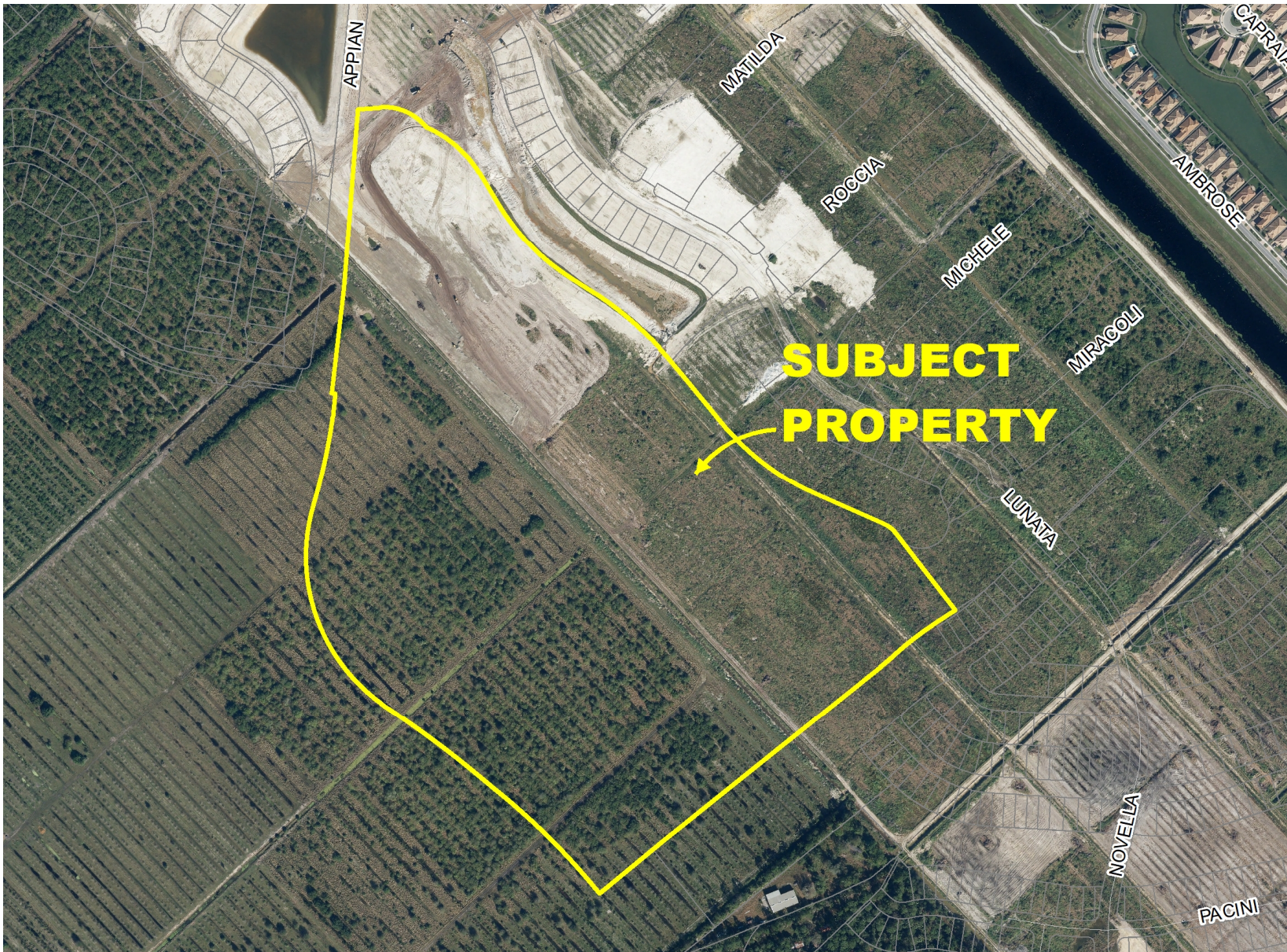
- LEGEND**
- | | | |
|---|--|--|
| PAIRED VILLA LOTS 37.5' | 52' LOTS | 82' LOTS |
| 42' LOTS | 62' LOTS | |
 - | | |
|-----------------------------------|-----------------------------|
| ① PGA VILLAGE VERANO RACQUET CLUB | ⑦ CROSSTOWN/LOOP ROAD ENTRY |
| ② CRESSWIND OASIS | ⑧ CLUB TALAVERA |
| ③ BRIDGE OVER C-24 CANAL | ⑨ MAIN ENTRY |
| ④ CRESSWIND 1ST ENTRY | ⑩ MODELS NORTH |
| ⑤ CRESSWIND 2ND ENTRY | ⑪ MODELS SOUTH |
| ⑥ VERANO 2ND GUARD HOUSE | |



OVERALL DEVELOPMENT MAP

CityofPSL.com





AERIAL

CityofPSL.com



The preliminary plat has been reviewed for compliance with Chapter 160, City Code, and the Verano Development of Regional Impact (DRI) Development Order, to ensure the provision of adequate public facilities and services are available with the development impacts.

This project is found to be in compliance.



The Planning and Zoning Board reviewed the request for a preliminary plat with construction plans on February 2, 2021 and recommended approval.

RECOMMENDATION

CityofPSL.com

