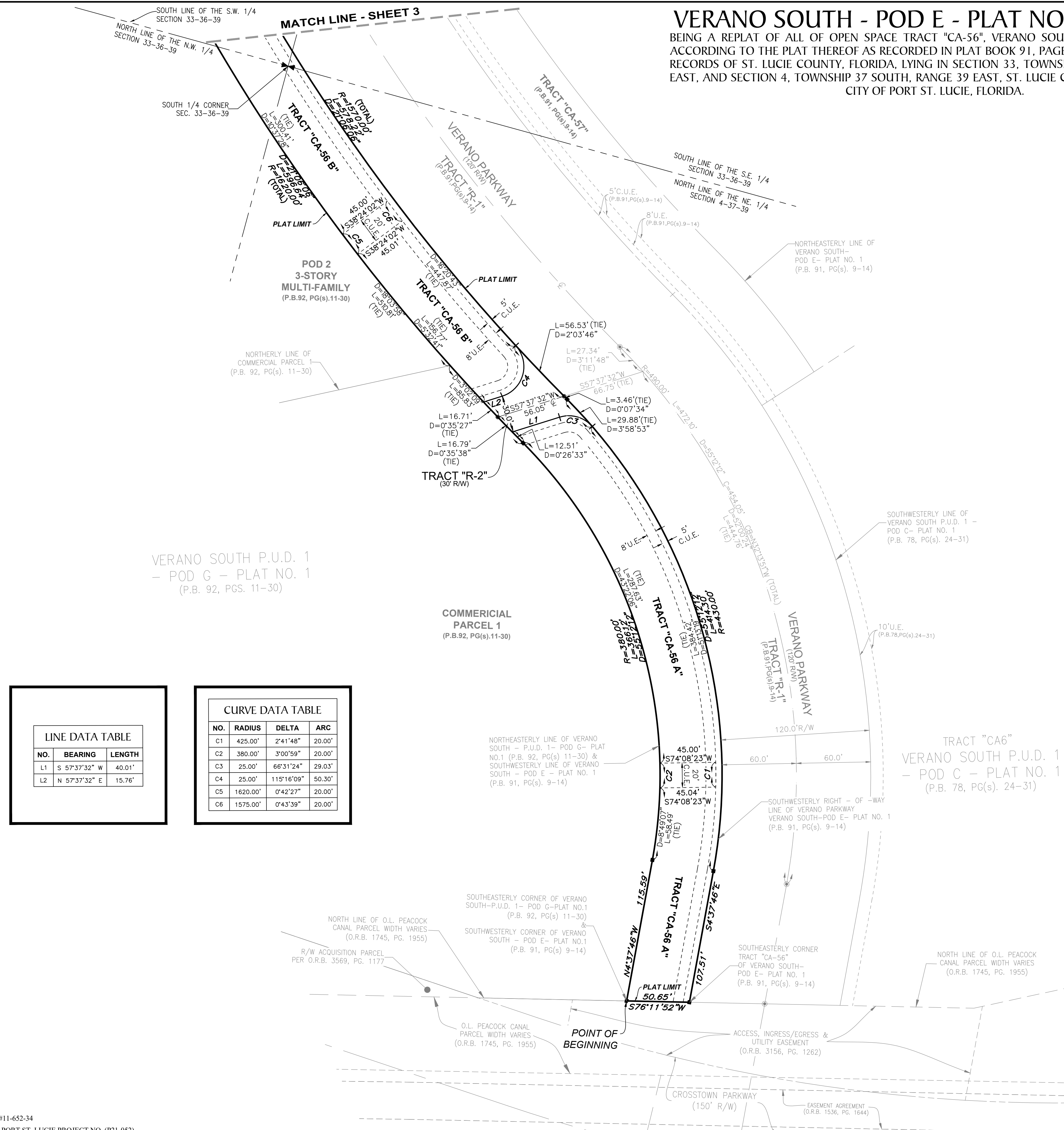
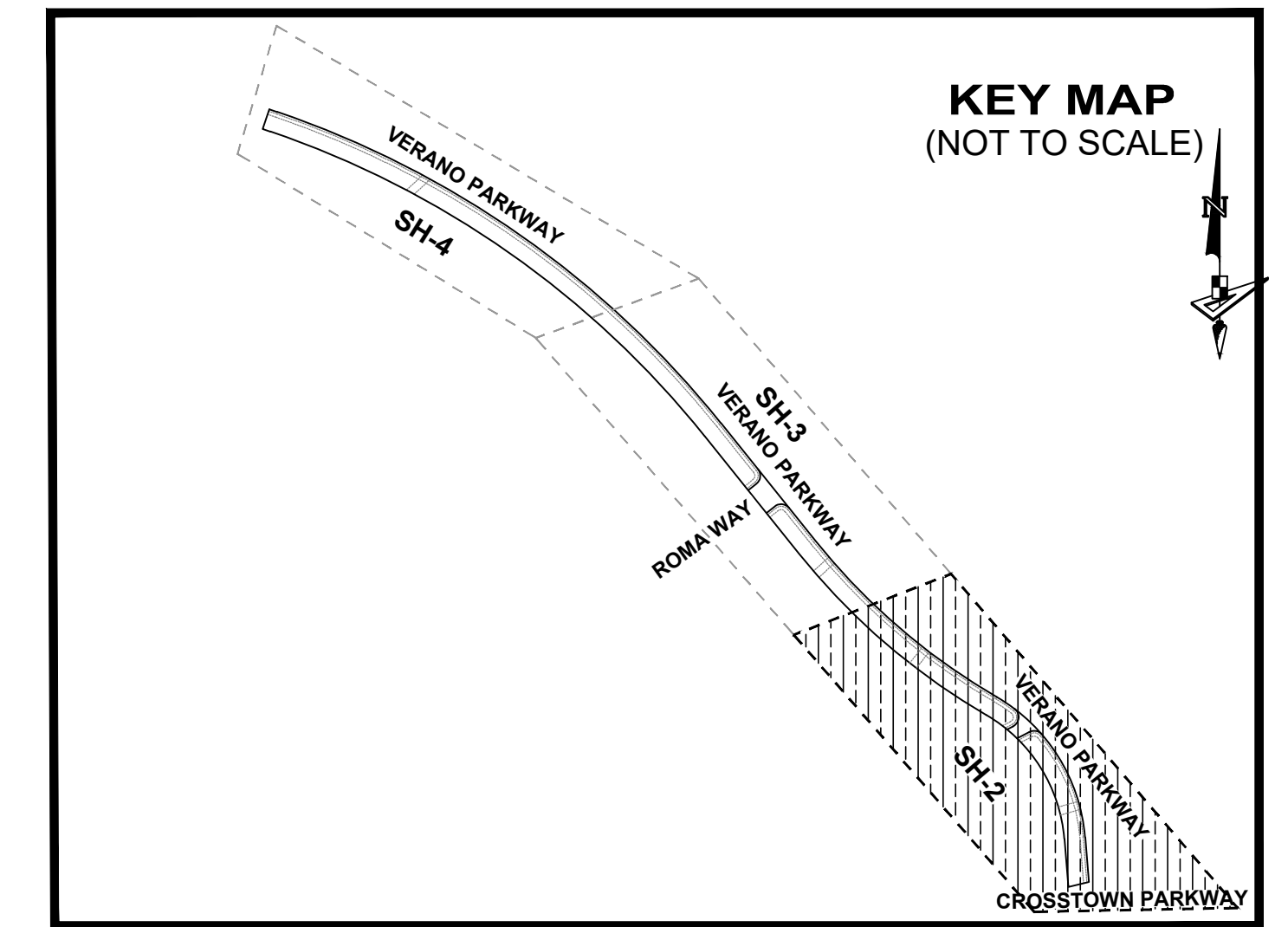
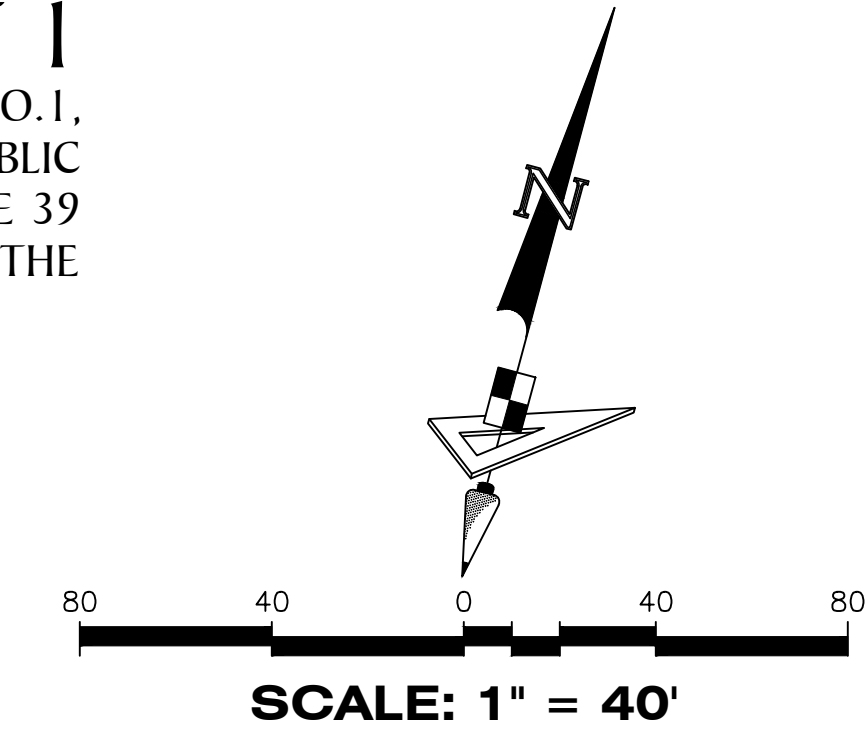


VERANO SOUTH - POD E - PLAT NO. 1 REPLAT 1

BEING A REPLAT OF ALL OF OPEN SPACE TRACT "CA-56", VERANO SOUTH - POD E- PLAT NO.1, ACCORDING TO THE PLAT THEREOF AS RECORDED IN PLAT BOOK 91, PAGES 9 THROUGH 14, PUBLIC RECORDS OF ST. LUCIE COUNTY, FLORIDA, LYING IN SECTION 33, TOWNSHIP 36 SOUTH, RANGE 39 EAST, AND SECTION 4, TOWNSHIP 37 SOUTH, RANGE 39 EAST, ST. LUCIE COUNTY, FLORIDA, IN THE CITY OF PORT ST. LUCIE, FLORIDA.

PLAT BOOK
PAGE
FILE NO.
DATE
TIME



NO.	BEARING	LENGTH
L1	S 57°37'32" W	40.01'
L2	N 57°37'32" E	15.76'

NO.	RADIUS	DELTA	ARC
C1	425.00'	2°41'48"	20.00'
C2	380.00'	3°00'59"	20.00'
C3	25.00'	66°31'24"	29.03'
C4	25.00'	115°16'09"	50.30'
C5	1620.00'	0°42'27"	20.00'
C6	1575.00'	0°43'39"	20.00'

P.B. -----	Plat Book
Pg(s) -----	Page(s)
C.U.E. -----	City Utility Easement
D.E. -----	Drainage Easement
U.E. -----	Utility Easement
⊖ -----	Centerline
R/W -----	Right-of-Way
P.U.D. -----	Planned Unit Development
R -----	Radius
L -----	Arc Length
D -----	Delta-Central Angle
CB -----	Chord Bearing
C -----	Chord Length
(R) -----	Radial
(NR) -----	Non-Radial
C.M. -----	Concrete Monument
LB -----	Licensed Business
■ -----	Indicates (PRM) Permanent Reference Monument-4"x4" Concrete Monument LB7768 (Unless Otherwise Noted)
● -----	Indicates (PCP) Permanent Control Point LB7768

VERANO SOUTH - POD E - PLAT NO. 1 REPLAT 1

BEING A REPLAT OF ALL OF OPEN SPACE TRACT "CA-56", VERANO SOUTH - POD E- PLAT NO. 1, ACCORDING TO THE PLAT THEREOF AS RECORDED IN PLAT BOOK 91, PAGES 9 THROUGH 14, PUBLIC RECORDS OF ST. LUCIE COUNTY, FLORIDA, LYING IN SECTION 33, TOWNSHIP 36 SOUTH, RANGE 39 EAST, AND SECTION 4, TOWNSHIP 37 SOUTH, RANGE 39 EAST, ST. LUCIE COUNTY, FLORIDA, IN THE CITY OF PORT ST. LUCIE, FLORIDA.

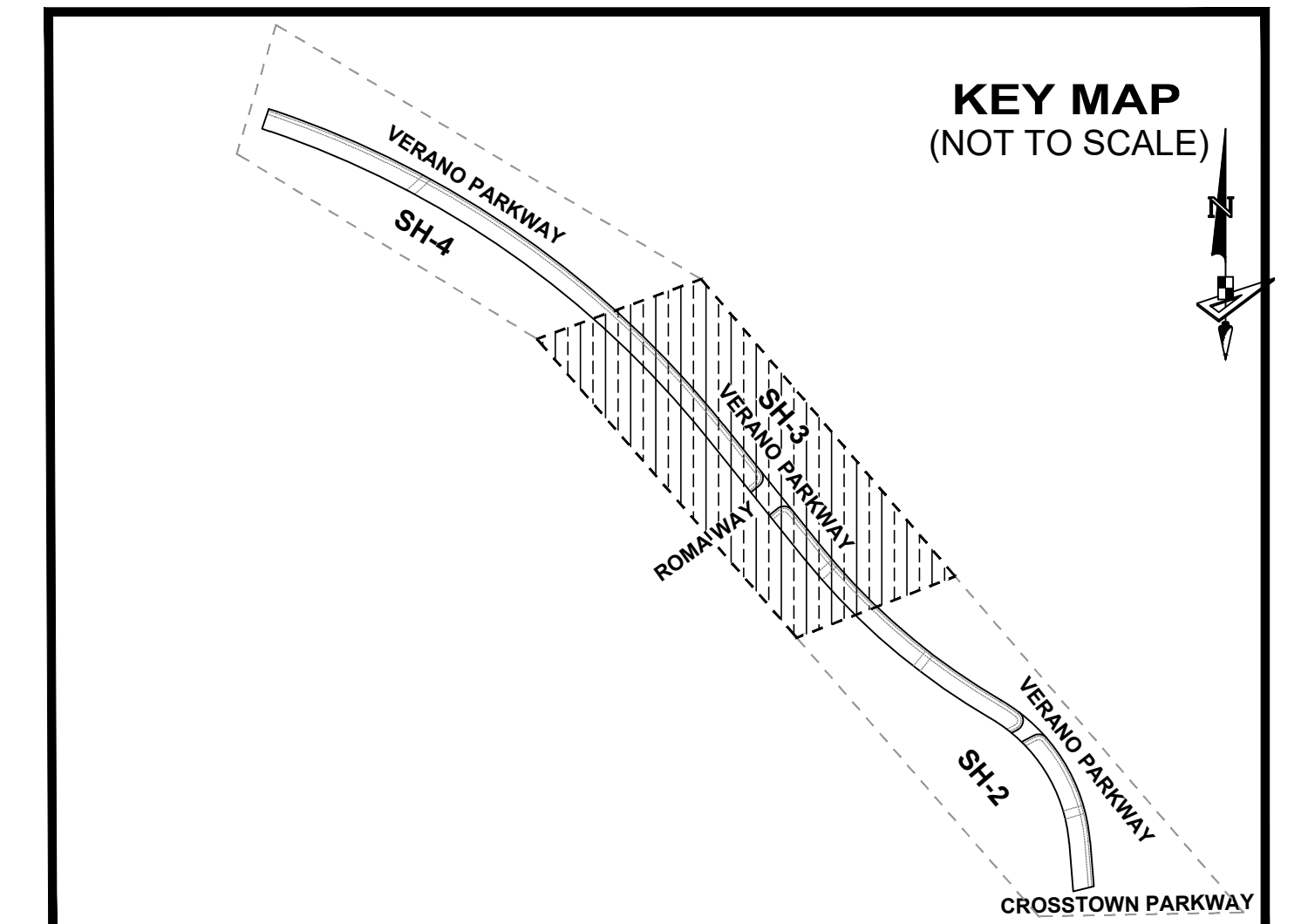
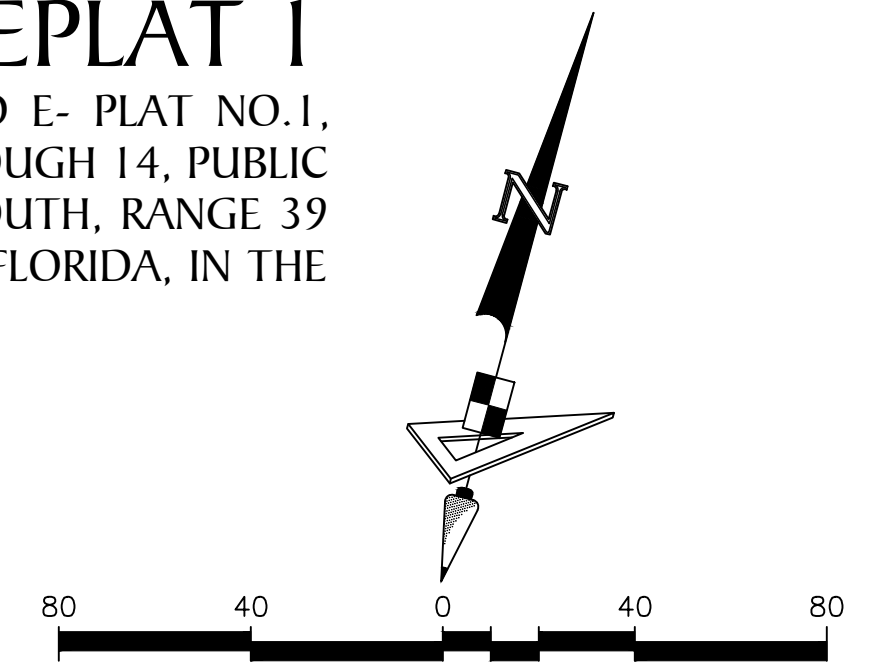
PLAT BOOK

PAGE

FILE NO.

DATE

TIME



VERANO SOUTH P.U.D. 1
- POD G - PLAT NO. 1
(P.B. 92, PG(s). 11-30)

TRACT "CA-1"
(P.B. 92, PG(s). 11-30)

POD 2
3-STORY
MULTI-FAMILY
(P.B.92, PG(s).11-30)

NO.	BEARING	LENGTH
L3	N 50°59'54" E	24.88'
L4	S 50°59'54" W	25.12'

NO.	RADIUS	DELTA	ARC
C7	1570.00'	0°43'48"	20.01'
C8	1620.00'	0°42'27"	20.01'
C9	25.00'	90°16'16"	39.39'
C10	25.00'	89°43'44"	39.15'

LEGEND

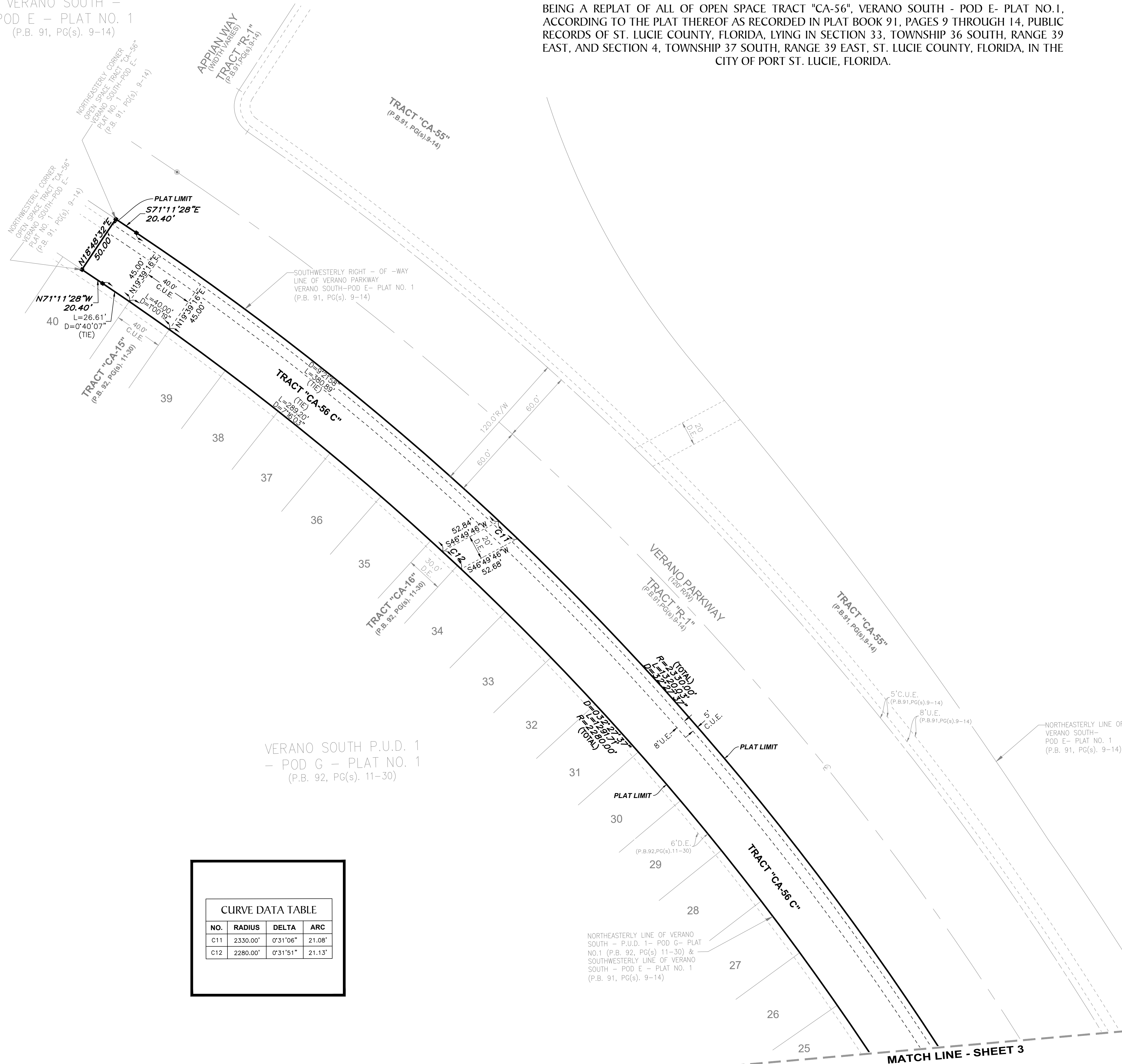
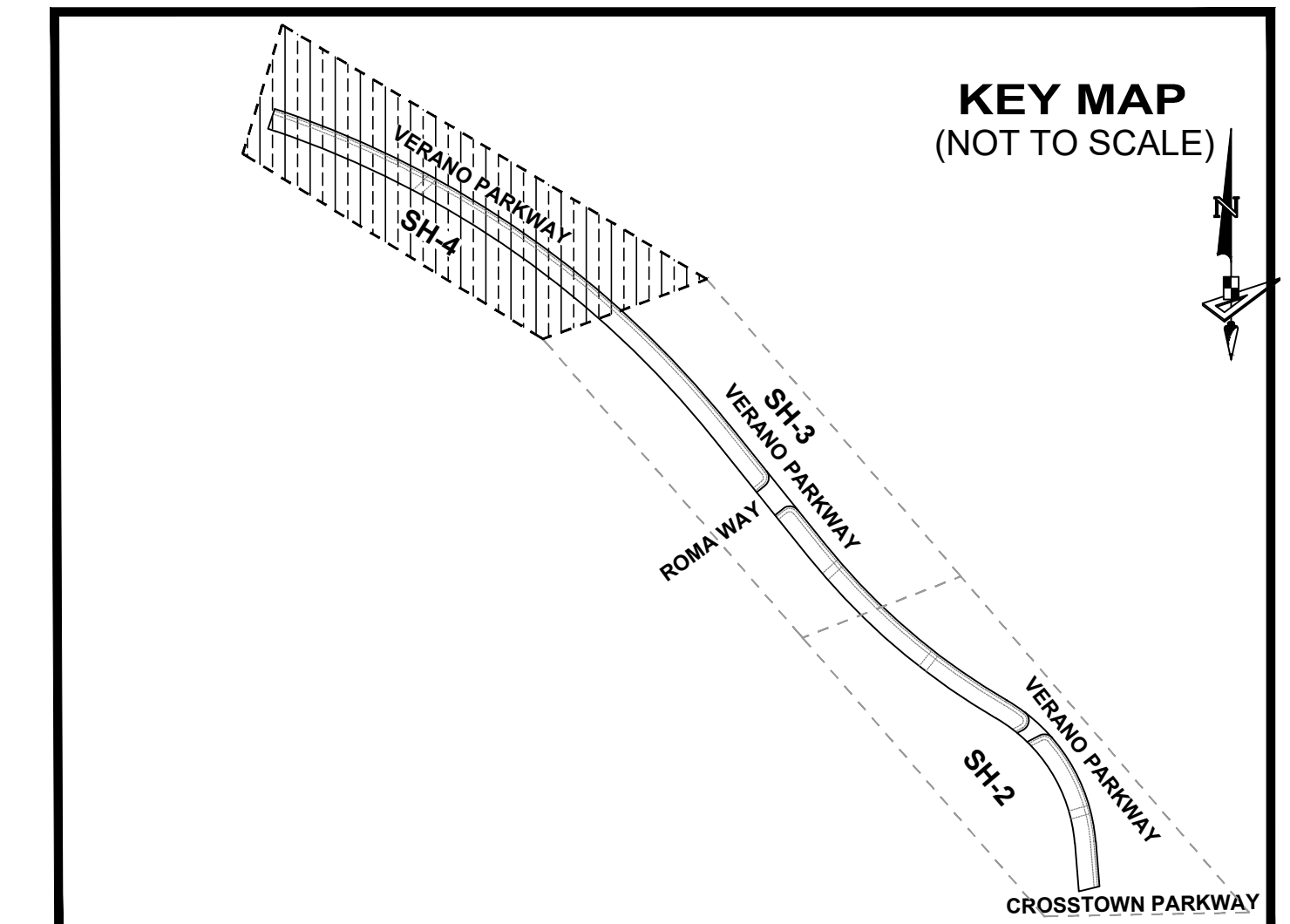
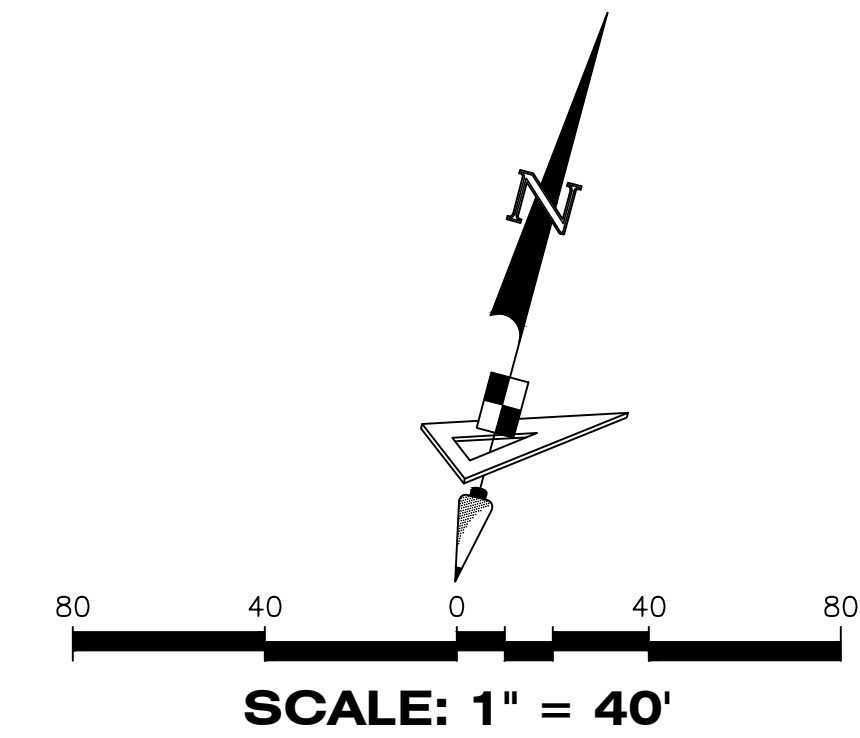
- P.B. ----- Plat Book
- Pg(s) ----- Page(s)
- C.U.E. ----- City Utility Easement
- D.E. ----- Drainage Easement
- U.E. ----- Utility Easement
- ⊙ ----- Centerline
- R/W ----- Right-of-Way
- P.U.D. ----- Planned Unit Development
- R ----- Radius
- L ----- Arc Length
- D ----- Delta-Central Angle
- CB ----- Chord Bearing
- C ----- Chord Length
- (R) ----- Radial
- (NR) ----- Non-Radial
- C.M. ----- Concrete Monument
- LB ----- Licensed Business
- ----- Indicates (PRM) Permanent Reference Monument-4"x4" Concrete Monument LB7768 (Unless Otherwise Noted)
- ----- Indicates (PCP) Permanent Control Point LB7768

VERANO SOUTH -
 POD E - PLAT NO. 1
 (P.B. 91, PG(s). 9-14)

VERANO SOUTH - POD E - PLAT NO. 1 REPLAT 1

BEING A REPLAT OF ALL OF OPEN SPACE TRACT "CA-56", VERANO SOUTH - POD E- PLAT NO.1, ACCORDING TO THE PLAT THEREOF AS RECORDED IN PLAT BOOK 91, PAGES 9 THROUGH 14, PUBLIC RECORDS OF ST. LUCIE COUNTY, FLORIDA, LYING IN SECTION 33, TOWNSHIP 36 SOUTH, RANGE 39 EAST, AND SECTION 4, TOWNSHIP 37 SOUTH, RANGE 39 EAST, ST. LUCIE COUNTY, FLORIDA, IN THE CITY OF PORT ST. LUCIE, FLORIDA.

PLAT BOOK
PAGE
FILE NO.
DATE
TIME



VERANO SOUTH P.U.D. 1
 - POD G - PLAT NO. 1
 (P.B. 92, PG(s). 11-30)

NO.	RADIUS	DELTA	ARC
C11	2330.00'	0°31'06"	21.08'
C12	2280.00'	0°31'51"	21.13'

P.B.	Plat Book
Pg(s)	Page(s)
C.U.E.	City Utility Easement
D.E.	Drainage Easement
U.E.	Utility Easement
@	Centerline
R/W	Right-of-Way
P.U.D.	Planned Unit Development
R	Radius
L	Arc Length
D	Delta-Central Angle
CB	Chord Bearing
C	Chord Length
(R)	Radial
(NR)	Non-Radial
C.M.	Concrete Monument
LB	Licensed Business
■	Indicates (PRM) Permanent Reference Monument-4"x4" Concrete Monument LB7768 (Unless Otherwise Noted)
●	Indicates (PCP) Permanent Control Point LB7768

DRAWN BY: WINTERKOPF/PLATTING/VERANO SOUTH-POD E REPLAT 1 TRACT CA-56 REPLAT VERANO SOUTH-POD E REPLAT 1 PLAT NO. 1 (P.B. 91, PG(S). 9-14) DATE: 08/26/2013 11:11 AM LAST SAVED BY: SEAWR ON: 08/26/2013 12:30 PM