

**LANDSCAPE DATA**

VUA REQUIREMENTS: 1 TREE PER LANDSCAPE ISLAND  
 REQUIRED: 64 ISLANDS = 64 SHADE TREES  
 PROVIDED: 69 SHADE TREES  
 \*61 QV (LIVE OAK)  
 \*3 CEB (GREEN BUTTWOOD)  
 \*4 RE (ROYAL PALM)  
 \*3 SS (3 SABAL PALMS EQUIVALENT 1 SHADE TREE)

**BUFFER REQUIREMENTS:**  
 VERANO PARKWAY BUFFER (544 LF): 10' BUFFER, 18 TREES, HEDGE  
 CROSTOWN PARKWAY BUFFER (679 LF): 10' BUFFER, 23 TREES, HEDGE  
 COMMERCIAL PARCEL BUFFER (940 LF): 10' BUFFER, 31 TREES, HEDGE  
 WESTERN BUFFER (944 LF): 10' BUFFER, 31 TREES, HEDGE  
 ROMA WAY BUFFER (1085 LF): 10' BUFFER, 36 TREES, HEDGE

**BUFFER PLANTINGS PROVIDED:**  
 VERANO PARKWAY BUFFER: 40' BUFFER, 38 TREES, 4725 SHRUBS \*INCLUDING EXISTING BUFFER  
 CROSTOWN PARKWAY BUFFER: 25' BUFFER, 6' WALL, 23 LIVE OAK TREES, 381 CLUSIA SHRUBS  
 COMMERCIAL PARCEL BUFFER: 10' BUFFER, 31 LIVE OAK TREES, 465 CLUSIA SHRUBS  
 WESTERN BUFFER: 10' BUFFER, 31 LIVE OAK TREES, 309 CLUSIA SHRUBS  
 ROMA WAY BUFFER: 15-50' BUFFER, 36 TREES, 1041 SHRUBS

\*VERANO PARKWAY BUFFER PLANTINGS NOT INCLUDED ON THIS LANDSCAPE PLAN PLANT SCHEDULE

MITIGATION REQUIREMENTS: N/A

11-652-360  
 P21-053  
**LANDSCAPE PLAN**

Scale: 1" = 60'-0"

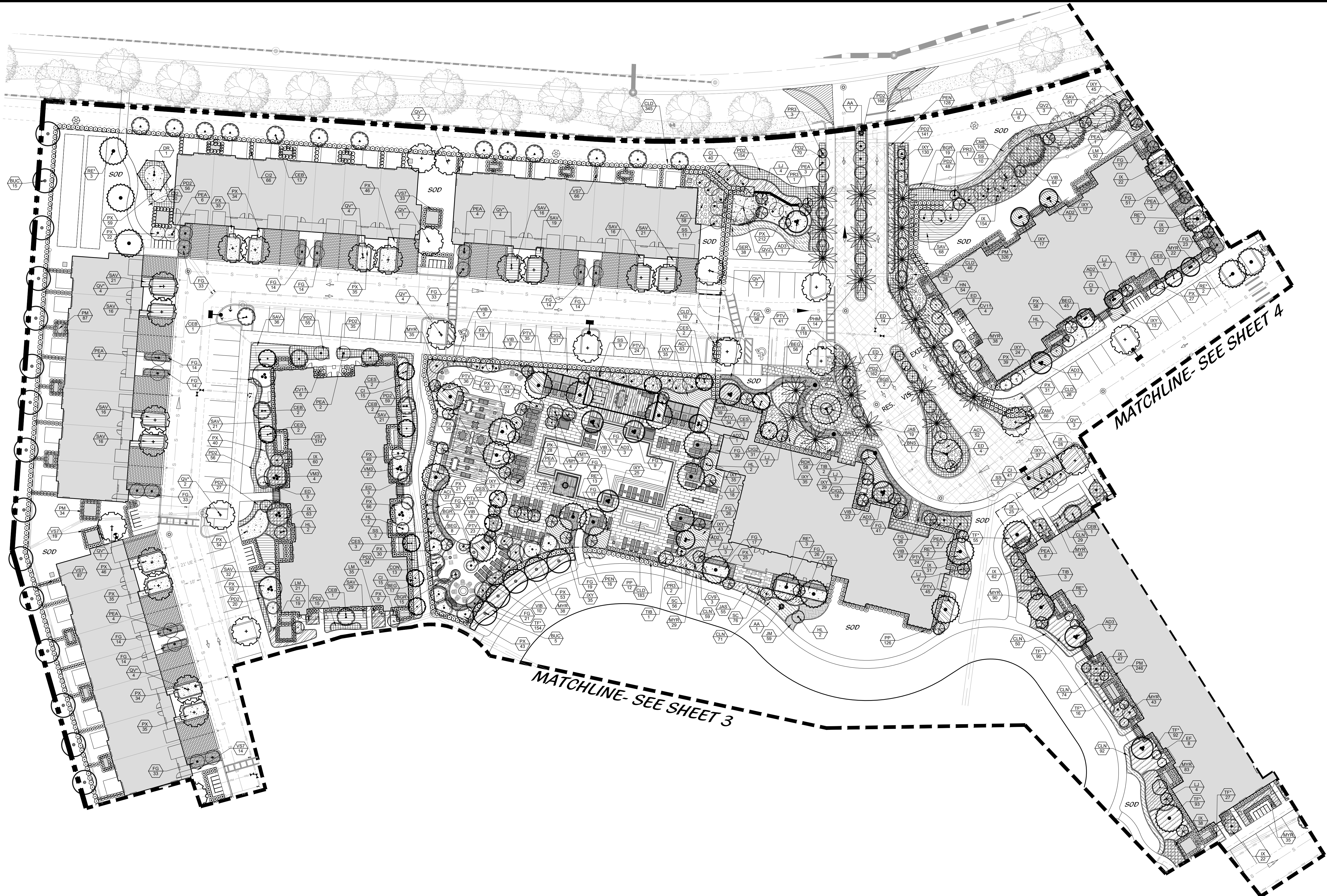
North

**Cotleur & Hearing**  
 Landscape Architects  
 Land Planners  
 Environmental Consultants  
 1934 Commerce Lane  
 Suite 1  
 Jupiter, Florida 33458  
 561.747.6336 • Fax 747.1377  
 www.cotleurhearing.com  
 Lic# LC-C000239

**VERANO SOUTH POD G MULTIFAMILY**  
 Kolter Homes  
 Port St. Lucie, Florida

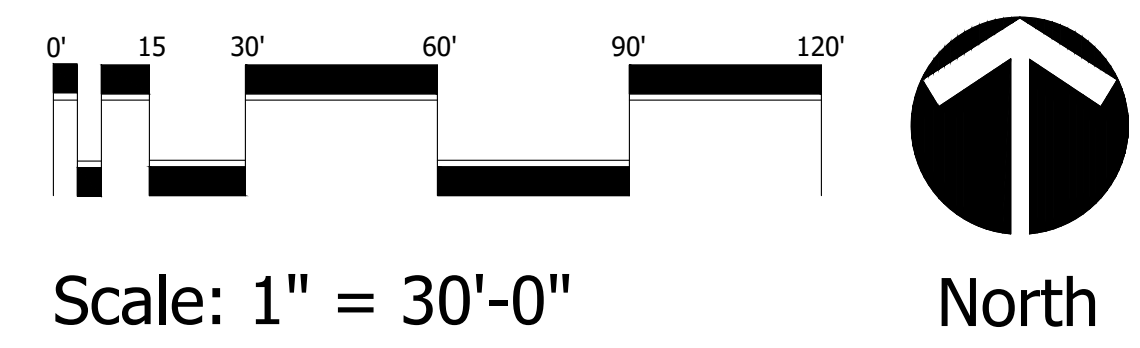
DESIGNED	DTS/ACE
DRAWN	ACE
APPROVED	DTS
JOB NUMBER	20-0815
DATE	03-03-21
REVISIONS	05-12-21
	06-02-21
	06-25-21





**VERANO SOUTH POD G MULTIFAMILY**  
 Koiter Homes  
 Port St. Lucie, Florida

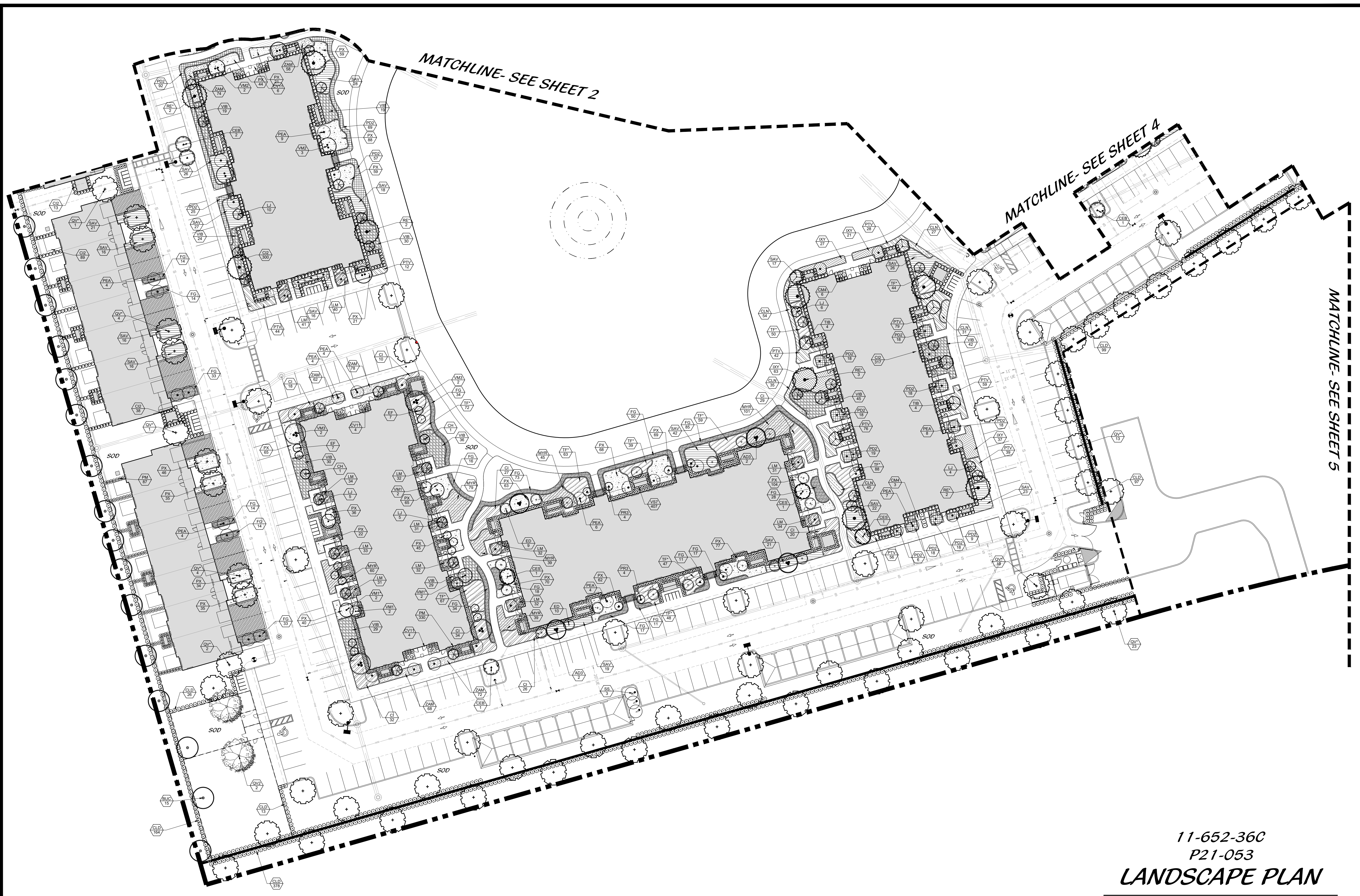
11-652-36C  
 P21-053  
**LANDSCAPE PLAN**



DESIGNED	DTS/ACE
DRAWN	ACE
APPROVED	DTS
JOB NUMBER	20-0815
DATE	03-03-21
REVISIONS	05-12-21
	06-02-21
	06-25-21

October 01, 2020 2:51:02 p.m.  
 Drawing: 18-1003\_PLAT 1\_09-29-20.DWG

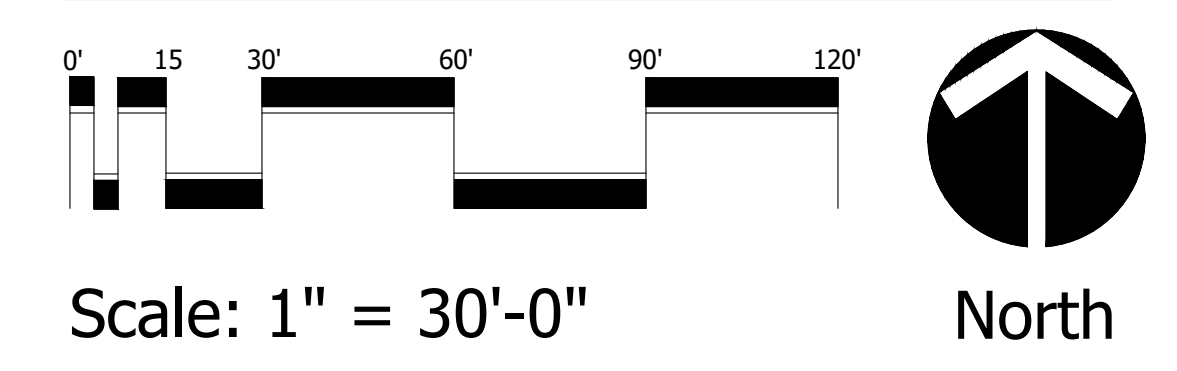




**Cotleur & Hearing**  
 Landscape Architects  
 Land Planners  
 Environmental Consultants  
 1934 Commerce Lane  
 Suite 1  
 Jupiter, Florida 33458  
 561.747.6336 • Fax 747.1377  
 www.cotleurhearing.com  
 Lic# LC-C000239

**VERANO SOUTH POD G MULTIFAMILY**  
 Koiter Homes  
 Port St. Lucie, Florida

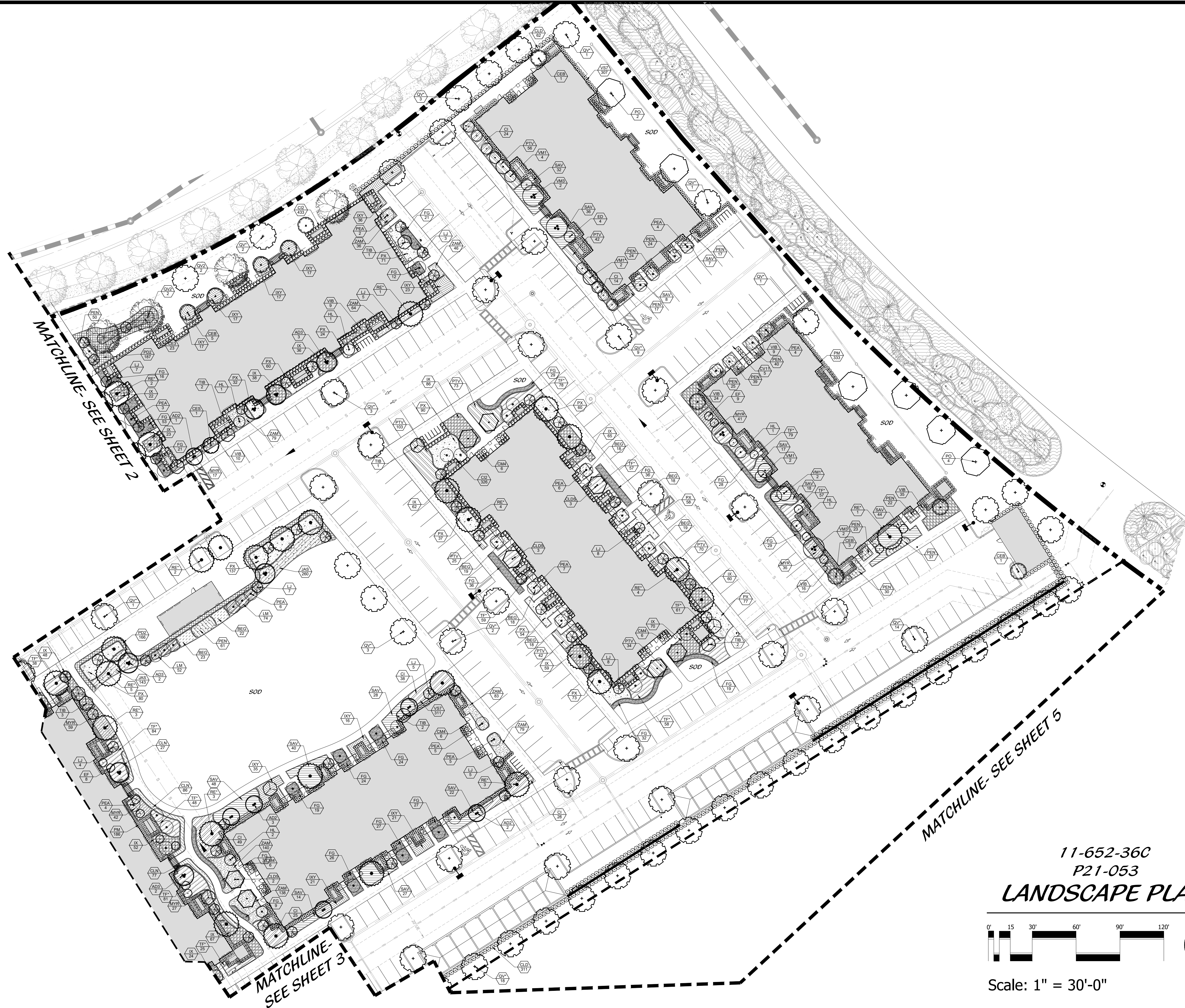
11-652-360  
 P21-053  
**LANDSCAPE PLAN**



DESIGNED	DTS/ACE
DRAWN	ACE
APPROVED	DTS
JOB NUMBER	20-0815
DATE	03-03-21
REVISIONS	05-12-21
	06-02-21
	06-25-21

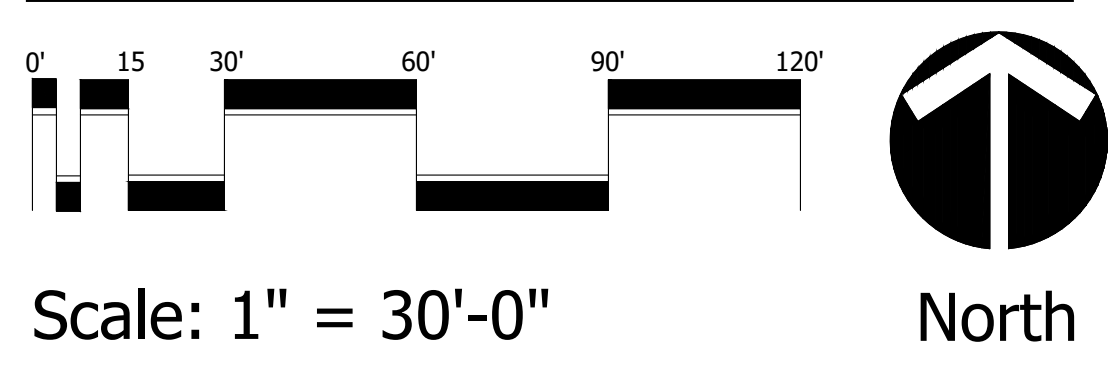
October 01, 2020 2:51:02 p.m.  
 Drawing: 18-1003\_PLAT 1\_09-29-20.DWG





**VERANO SOUTH POD G MULTIFAMILY**  
 Kolter Homes  
 Port St. Lucie, Florida

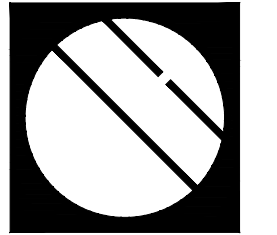
11-652-36C  
 P21-053  
**LANDSCAPE PLAN**



DESIGNED	DTS/ACE
DRAWN	ACE
APPROVED	DTS
JOB NUMBER	20-0815
DATE	03-03-21
REVISIONS	05-12-21
	06-02-21
	06-25-21

October 01, 2020 2:51:02 p.m.  
 Drawing: 18-1003\_PLAT 1\_09-29-20.DWG





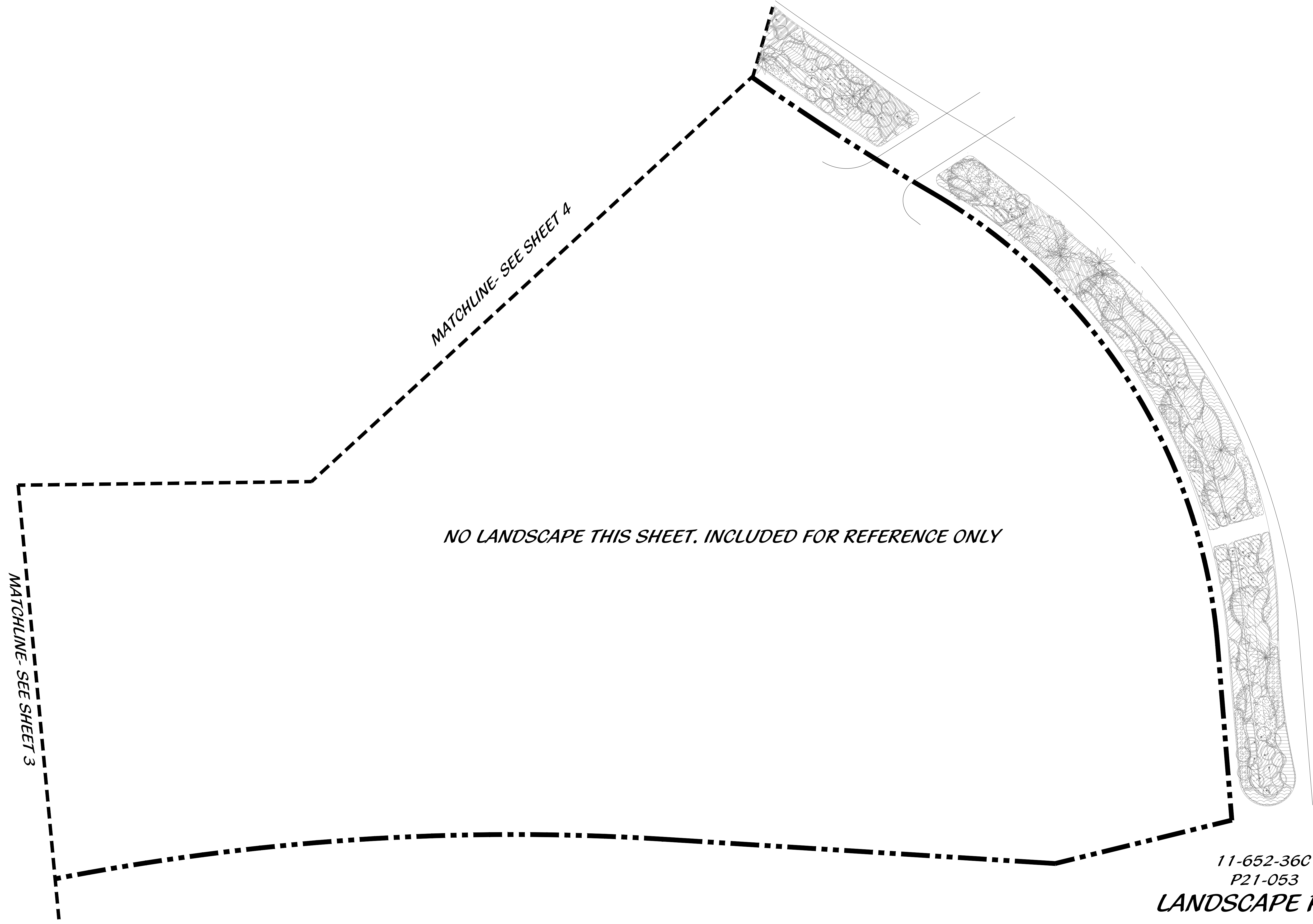
**Cotleur & Hearing**

Landscape Architects  
Land Planners  
Environmental Consultants

1934 Commerce Lane  
Suite 1  
Jupiter, Florida 33458  
561.747.6336 • Fax 747.1377  
www.cotleurhearing.com  
Lic# LC-C000239

**VERANO SOUTH POD G MULTIFAMILY**

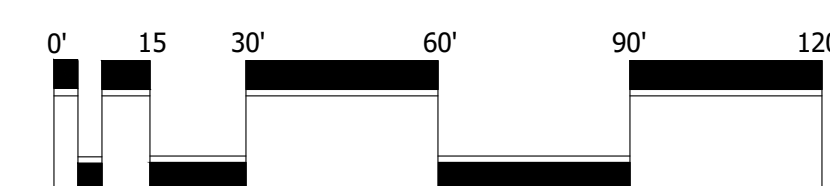
Kolter Homes  
Port St. Lucie, Florida



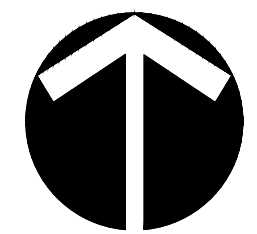
*NO LANDSCAPE THIS SHEET. INCLUDED FOR REFERENCE ONLY*

11-652-36C  
P21-053

**LANDSCAPE PLAN**



Scale: 1" = 30'-0"



North

DESIGNED	DTS/ACE
DRAWN	ACE
APPROVED	DTS
JOB NUMBER	20-0815
DATE	03-03-21
REVISIONS	05-12-21
	06-02-21
	06-25-21

October 01, 2020 2:51:02 p.m.  
Drawing: 18-1003\_PLAT 1\_09-29-20.DWG

SHEET 5 OF 6

© COTLEUR & HEARING, INC.  
These drawings are the property of the architect and are not to be used for extensions or on other projects except by agreement in writing with the architect. Immediately report any discrepancies to the architect.



## LANDSCAPE SPECIFICATIONS

**1. GENERAL LANDSCAPE REQUIREMENTS**  
 LANDSCAPE CONTRACTOR WORK INCLUDES, BUT IS NOT LIMITED TO, SOIL PREPARATION, FINE OR FINISH GRADING, FURNISHING AND INSTALLING PLANT MATERIAL, WATERING, STAKING, GUYING AND MULCHING.

**PLANT SIZE AND QUALITY**  
 TREES, PALMS, SHRUBS, GROUNDCOVERS:  
 PLANT SPECIES AND SIZES SHALL CONFORM TO THOSE INDICATED ON THE DRAWINGS. NOMENCLATURE SHALL CONFORM TO STANDARD PLANT NAMES, 1942 EDITION. ALL NURSERY STOCK SHALL BE IN ACCORDANCE WITH GRADES AND STANDARDS FOR NURSERY PLANTS PARTS 1 & II, LATEST EDITION PUBLISHED BY THE FLORIDA DEPARTMENT OF AGRICULTURE AND CONSUMER SERVICES. FLORIDA FANCY UNLESS SPECIFIED OTHERWISE. ALL PLANTS SHALL BE FLORIDA GRADE NUMBER 1 OR BETTER AS DETERMINED BY THE FLORIDA DEPARTMENT OF AGRICULTURE AND CONSUMER SERVICES OR FAVORABLE IN ITS DEVELOPMENT. ALL PLANTS SHALL BE PRUNED PRIOR TO DELIVERY ONLY UPON THE APPROVAL OF THE LANDSCAPE ARCHITECT.

ALL CONTAINER GROWN MATERIAL SHALL BE HEALTHY, VIGOROUS, WELL-ROOTED PLANTS AND ESTABLISHED IN THE CONTAINER IN WHICH THEY ARE SOLD. THE PLANTS SHALL HAVE TOPS OF GOOD QUALITY AND BE IN A HEALTHY GROWING CONDITION.

AN ESTABLISHED CONTAINER GROWN PLANT SHALL BE TRANSPLANTED INTO A CONTAINER AND GROWN IN THAT CONTAINER SUFFICIENTLY LONG ENOUGH FOR THE NEW FIBROUS ROOTS TO HAVE DEVELOPED SO THAT THE ROOT MASS WILL RETAIN ITS SHAPE AND HOLD TOGETHER WHEN REMOVED FROM THE CONTAINER.

MULCH SHALL BE SHREDDED CYPRESS MULCH. ALL MULCH IS TO BE APPLIED TO A DEPTH OF 3" EXCEPT FOR THOSE SPECIFIC SITUATIONS SHOWN BELOW IN SECTIONS 2.3 & 4.

FERTILIZER IN BACKFILL MIXTURE FOR ALL PLANTS SHALL CONSIST OF MILDORGANIC ACTIVATED COMPOSTED WITH THE BACKFILL AT A RATE OF NOT LESS THAN 50 LBS. PER CUBIC YARD.

FERTILIZER FOR TREES AND SHRUBS MAY BE TABLET FORM OR GRANULAR. GRANULAR FERTILIZER SHALL BE UNIFORM IN COMPOSITION, DRY AND FREE-FLOWING. THIS FERTILIZER SHALL BE DELIVERED TO THE SITE IN THE ORIGINAL UNOPENED BAGS, EACH BAG MUST BE THE MANUFACTURER'S STATEMENT OF ANALYSIS AND SHALL MEET THE FOLLOWING REQUIREMENTS: 16% NITROGEN, 7% PHOSPHORUS, 12% POTASSIUM, PLUS IRON. TABLET FERTILIZER (AGRIFORM OR EQUIV.) IN 21 GRAM SIZE SHALL MEET THE FOLLOWING REQUIREMENTS: 20% NITROGEN, 10% PHOSPHORUS AND 5% POTASSIUM.

**FERTILIZER WILL BE APPLIED AT THE FOLLOWING RATES:**

PLANT SIZE	16-7/12	AGRIFORM TABLETS* (21 GRAM)
1 GAL	1/4 LB.	1
3 GAL	1/3 LB.	3
1/2-15 GAL	1/2 LB.	12

1"-6" CALIPER 2 LBS./1" CALIPER 2 PER 1" CALIPER  
 6" AND LARGER 3 LBS./1" CALIPER 2 PER 1" CALIPER  
 (\*) TABLETS TO BE INSTALLED IN TOP 6"

"FLORIDA EAST COAST PALM SPECIAL" SHALL BE APPLIED TO ALL PALMS AT INSTALLATION AT A RATE OF 5 LB. PER INCH OF TRUNK UNLESS OTHERWISE SPECIFIED.

FIELD GROWN TREES AND PALMS PREVIOUSLY ROOT PRUNED SHALL OBTAIN A ROOT BALL WITH SUFFICIENT ROOTS FOR CONTINUED GROWTH WITHOUT RESULTING SHOCK.

CONTRACTOR SHALL NOT MARK OR SCAR TRUNK IN ANY FASHION.

PLANTS SHALL BE WATERED AS NECESSARY OR WITHIN 24 HOURS AFTER NOTIFICATION BY THE LANDSCAPE ARCHITECT.

THE LOCATIONS OF PLANTS, AS SHOWN IN THESE PLANS, ARE APPROXIMATE. THE FINAL LOCATIONS MAY BE ADJUSTED TO ACCOMMODATE UNFORESEEN FIELD CONDITIONS. MAJOR ADJUSTMENTS TO THE LAYOUT ARE TO BE APPROVED BY THE LANDSCAPE ARCHITECT.

ALL PLASTIC FABRIC SHALL BE REMOVED FROM PLANT MATERIAL AT TIME OF INSTALLATION.

ALL TREES MUST BE STAKED AS SHOWN ON THE PLANTING DETAILS WITHIN 24 HOURS OF PLANTING. STAKES TO REMAIN FOR A MINIMUM OF 9 MONTHS, BUT NO LONGER THAN 18 MONTHS. CONTRACTOR IS RESPONSIBLE FOR MAINTENANCE AND REMOVAL OF THE STAKES.

ALL TREES MUST BE PRUNED AS PER LANDSCAPE ARCHITECT'S DIRECTION. SABAL PALMS MAY BE HURRICANE CUT.

ALL SHRUBS, TREES AND GROUND COVER WILL HAVE IMPROVED SOIL, AS PER PLANTING SOIL NOTES. THE SOILS SHALL BE PLACED IN THE HOLE DURING PLANTING. TOP DRESSING ONLY IS NOT ACCEPTABLE.

DO NOT ALLOW AIR POCKETS TO FORM WHEN BACKFILLING. ALL TREES SHALL BE SPOKED IN UTILIZING WATER AND A TREE BAR.

THE LANDSCAPE CONTRACTOR SHALL WATER, MULCH, WEED, PRUNE, AND OTHERWISE MAINTAIN ALL PLANTS, INCLUDING SOD, UNTIL COMPLETION OF CONTRACT OR ACCEPTANCE BY LANDSCAPE ARCHITECT. SETTLED PLANTS SHALL BE RESET TO PROPER GRADE, PLANTING SAUCERS RESTORED, AND DEFECTIVE WORK CORRECTED.

THE LANDSCAPE CONTRACTOR SHALL AT ALL TIMES KEEP THE PREMISES FREE FROM ACCUMULATION OF WASTE MATERIALS OR DEBRIS CAUSED BY HIS CREWS DURING THE PERFORMANCE OF THE WORK.

UPON COMPLETION OF THE WORK, THE CONTRACTOR SHALL PROVIDE AND REMOVE ALL WASTE MATERIALS, DEBRIS, UNUSED PLANT MATERIAL, EMPTY PLANT CONTAINERS AND ALL EQUIPMENT FROM THE PROJECT SITE.

UPON COMPLETION OF THE WORK, THE LANDSCAPE CONTRACTOR SHALL NOTIFY THE LANDSCAPE ARCHITECT AND REQUEST A FINAL INSPECTION. ANY ITEMS THAT ARE JUDGED INCOMPLETE OR UNACCEPTABLE BY THE LANDSCAPE ARCHITECT OR OWNER'S REPRESENTATIVE SHALL BE PROMPTLY CORRECTED BY THE LANDSCAPE CONTRACTOR.

THE LANDSCAPE CONTRACTOR SHALL GUARANTEE ALL PLANT MATERIAL FOR A PERIOD OF SIX (6) MONTHS FROM THE DATE OF CONDITIONAL ACCEPTANCE IN WRITING FROM THE LANDSCAPE ARCHITECT. AT THE TIME OF CONDITIONAL ACCEPTANCE, THE SIX (6) MONTH PERIOD SHALL COMMENCE. ANY MATERIALS WHICH HAVE DIED OR DIED FROM PROPER POSITIONING OR REPLACED WITH SPECIMENS THAT MEET THE MINIMUM REQUIREMENTS CALLED FOR ON THE DRAWINGS. THE LANDSCAPE CONTRACTOR SHALL NOT BE HELD RESPONSIBLE FOR THE DEATH OR DAMAGE RESULTING FROM LIGHTNING, VANDALISM, AND AUTOMOBILES OR FROM NEGLIGENCE BY THE OWNER.

CONTRACTOR SHALL BE RESPONSIBLE FOR WATERING AND OTHERWISE MAINTAINING PLANTS UP TO THE CONDITIONAL ACCEPTANCE PERIOD, UNLESS A WRITTEN AGREEMENT WITH THE LANDSCAPE ARCHITECT PROVIDES FOR A DIFFERENT ARRANGEMENT.

ALL LABOR AND MATERIAL FOR SOIL AMENDMENTS AND FERTILIZER THAT IS REQUIRED TO INSURE THE SUCCESSFUL ESTABLISHMENT AND SURVIVAL OF THE PROPOSED VEGETATION, AS WELL AS ALL THE COST FOR THE REMOVAL OF UNSUITABLE OR EXCESS BACKFILL MATERIAL, SHALL BE INCLUDED IN THE CONTRACTOR'S BID TO PERFORM THE WORK REPRESENTED IN THIS PLAN SET.

### 2. PLANTING TREES

EXCAVATE PIT AS PER PLANTING DETAILS. COMPACT LAYER OF TOPSOIL IN PIT WITH A SLIGHTLY DISHED GRADE TO CENTER.

BACKFILL AROUND BALL WITH TOPSOIL AND SLIGHTLY COMPACT. WATER THOROUGHLY AS LAYERS ARE PLACED TO ELIMINATE VOIDS AND AIR POCKETS. BUILD A 6" HIGH BERM OF TOPSOIL BEYOND EDGE OF EXCAVATION. APPLY 3" (AFTER SETTLEMENT) OF MULCH.

PRUNE TREE TO REMOVE DAMAGED BRANCHES, IMPROVE NATURAL SHAPE AND THIN OUT STRUCTURE. DO NOT REMOVE MORE THAN 15% OF BRANCHES. DO NOT PRUNE BACK TERMINAL LEAVES.

GUY AND STAKE TREE IN ACCORDANCE WITH THE STAKING DETAILS IMMEDIATELY AFTER PLANTING.

### 3. PLANTING SHRUBS

LAYOUT SHRUBS TO CREATE A CONTINUOUS SMOOTH FRONT LINE AND FILL IN BEHIND.

EXCAVATE PIT OR TRENCH TO 2 TIMES THE DIAMETER OF THE BALLS OR CONTAINERS OR 1'-0" WIDER THAN THE SPREAD OF ROOTS AND 3" DEEPER THAN REQUIRED FOR POSITIONING AT PROPER HEIGHT. COMPACT A LAYER OF TOPSOIL IN BOTTOM BEFORE PLACING PLANTS. BACKFILL AROUND PLANTS WITH PLANTING MIXTURE. COMPACT TO ELIMINATE VOIDS AND AIR POCKETS. FORM GRADE SLIGHTLY DISHED AND BERMED AT EDGES OF EXCAVATION. APPLY 3" OF MULCH.

PRUNE SHRUBS TO REMOVE DAMAGED BRANCHES, IMPROVE NATURAL SHAPE AND THIN OUT STRUCTURE. DO NOT REMOVE MORE THAN 15% OF BRANCHES.

### 4. PLANTING GROUND COVER

LOOSEN SUBGRADE TO DEPTH OF 4" IN AREAS WHERE TOPSOIL HAS BEEN STRIPPED AND SPREAD SMOOTH.

SPACE PLANTS AS OTHERWISE INDICATED. DIG HOLES LARGE ENOUGH TO ALLOW SPREADING OF ROOTS. COMPACT BACKFILL TO ELIMINATE VOIDS AND LEAVE GRADE SLIGHTLY DISHED AT EACH PLANT. WATER THOROUGHLY. APPLY 3" OF MULCH OVER ENTIRE PLANTING BED, LIFTING PLANT FOLIAGE ABOVE MULCH. PURPLE QUEEN GROUNDCOVER, IF SPECIFIED, SHALL ONLY RECEIVE 1" OF MULCH.

DURING PERIODS OF HOT SUN AND/OR WIND AT TIME OF PLANTING, PROVIDE PROTECTIVE COVER FOR SEVERAL DAYS OR AS NEEDED.

### 5. PLANTING LAWNS

SODDING: SOD TYPE SPECIFIED ON PLANT LIST SHALL BE MACHINE STRIPPED NOT MORE THAN 24 HOURS PRIOR TO LAYING.

LOOSEN SUBGRADE TO DEPTH OF 4" AND GRADE WITH TOPSOIL EITHER PROVIDED ON SITE OR IMPORTED TO FINISH DESIGN ELEVATIONS. ROLL PREPARED LAWN SURFACE. WATER THOROUGHLY, BUT DO NOT CREATE MUDDY SOIL CONDITION.

FERTILIZE SOIL AT THE RATE OF APPROXIMATELY 10 LBS. PER 1,000 S.F. SPREAD FERTILIZER OVER THE AREA TO RECEIVE GRASS BY USING AN APPROVED DISTRIBUTOR CALIBRATED TO UNIFORMLY DISTRIBUTE THE APPROPRIATE QUANTITY. DO NOT FERTILIZE WHEN WIND VELOCITY EXCEEDS 15 M.P.H. THOROUGHLY WATER THE ENTIRE AREA WITHIN 24 HOURS OF FERTILIZATION.

LAY SOD STRIPS WITH TIGHT JOINTS. DO NOT OVERLAP. STAGGER STRIPS TO OFFSET JOINTS IN ADJACENT COURSES. WORK SIFTED SOIL MIX INTO MINOR CRACKS BETWEEN PIECES OF SOD AND REMOVE EXCESS SOIL DEPOSITS FROM SODDED AREAS. SOD ON SLOPES GREATER THAN 3:1 SHALL BE STAKED IN PLACE. ROLL OR STAMP LIGHTLY AND WATER THOROUGHLY WITH A FINE SPRAY IMMEDIATELY AFTER PLANTING.

### 6. MISCELLANEOUS LANDSCAPE WORK

LANDSCAPE MAINTENANCE  
 MAINTAIN LANDSCAPE WORK UNTIL FINAL ACCEPTANCE IS ISSUED BY THE OWNER'S REPRESENTATIVE. INCLUDE WATERING, WEEDING, CULTIVATING, RESTORATION OF GRADE, MOWING AND TRIMMING GRASS, PRUNING TREES AND SHRUBS, PROTECTION FROM INSECTS AND DISEASES, FERTILIZING AND SIMILAR OPERATIONS AS NEEDED TO INSURE NORMAL GROWTH AND GOOD HEALTH FOR LIVE PLANT MATERIAL.

PLANT MATERIAL SUBSTITUTION  
 NO SUBSTITUTION OF PLANT MATERIAL, TYPE OR SIZES WILL BE PERMITTED WITHOUT AUTHORIZATION FROM THE LANDSCAPE ARCHITECT.

PLANTING BED PREPARATION  
 ALL PLANTING BEDS SHALL BE PROPERLY PREPARED PRIOR TO THE COMMENCEMENT OF ANY PLANTING. PLANTING AREAS, INCLUDING LAWNS SHALL BE FREE OF ALL WEEDS AND NUISANCE VEGETATION. IF TORPEDO GRASS (PANICUM REPENS) IS PRESENT OR ENCOUNTERED DURING PLANTING, THE LANDSCAPE CONTRACTOR SHALL STOP ALL PLANTING UNTIL IT CAN BE DEMONSTRATED THAT IT HAS BEEN COMPLETELY REMOVED OR ERADICATED. THERE SHALL BE NO EXCEPTIONS TO THIS PROVISION.

ALL LANDSCAPE ISLANDS AND BEDS WILL BE FREE OF SHELL ROCK AND CONSTRUCTION DEBRIS AND ESTABLISHED TO A DEPTH OF 30 INCHES OR TO CLEAN, NATIVE SOIL AND FILLED WITH THE SPECIFIED BACKFILL MIXTURE.

## PLANTING SCHEDULE

TREES	QTY	BOTANICAL NAME	COMMON NAME	CONT	GAL	SIZE	NATIVE	REMARKS	
BNS	2	BISMARCKIA NOBILIS 'SILVER'	SILVER BISMARCK PALM	66 GAL	N/A	5' C.T.		SINGLE, STRAIGHT TRUNK. FULL CANOPY. SYMMETRICAL. STANDARD TREE FORM.	
BGS	2	BOUGAINVILLEA 'ORANGE KING'	ORANGE KING BOUGAINVILLEA	25 gal	2" Cal	6" O.A., STANDARD	N		
BUC	36	BUGHIA BUCHERANA 'SHADY LADY'	SHADY LADY TREE	45 gal	2.5" Cal	12' O.A.		SINGLE STRAIGHT TRUNK. FULL CANOPY.	
CLUS	13	CLUSIA ROSA	CLUSIA TREE	30 GAL	2" Cal	8'-10" HT. 4'-6" SPRD	Y		
CON	16	COCONUT NIUFERA	COCONUT PALM	26 GAL	2" Cal	8'-10" HT. 4'-6" SPRD	Y		
CEB	34	CONCARPUS ERRECTUS	GREEN BUTTWOOD TREE	30 GAL	2" Cal	8'-10" HT. 4'-6" SPRD	Y		
CEJ	10	CONCARPUS ERRECTUS 'SERVICUS'	SILVER BUTTWOOD TREE	30 GAL	2" Cal	8'-10" HT. 4'-6" SPRD	Y		
DR	1	DELONIX REGIA	ROYAL PONCIANCA	45 gal	2.5" Cal	12'-14" HT. 6'-8" SPRD			
ED	63	ELAEAGARPUS DECIPRIENS	JAPANESE BLUEBERRY TREE	30 GAL	3" Cal	8' OA	N		
EF	39	EUGENIA FORTIDA	JAPANESE STOPPER	30 gal	N/A	6'-8" O.A.	Y	FULL & THICK	
LJ	133	LIQUISTRIA HAPONICUM	JAPANESE PRIVET	45 GAL	N/A	8'-10" HT. 6'-8" SPRD	Y	FULL CANOPY. MULTI TRUNK. LIMB UP 3' FULL CANOPY.	
PLA	137	PLATANUS OCCIDENTALIS	AMERICAN SYCAMORE	FIELD GROWN	3" Cal	12'-14" HT. 4'-6" SPRD	Y		
PEA	137	PHYTODOSPHERA ELLIANGENS	ALEXANDER PALM	25 GAL	N/A	6'-8" C.T.	Y	FULL CANOPY. SPECIMEN	
QV2	156	QUERCUS VIRGINIANA	LIVE OAK SPECIMEN	50 GAL OR FG	6"-8" CAL	16'-18" HT. 10'-12" SPRD	Y	FLORIDA #1, DOUBLE DUG ROOT BALL FULL CANOPY, SYMMETRICAL, MULTI-TRUNK	
QV	137	QUERCUS VIRGINIANA	LIVE OAK	65 GAL	3" CAL	12' OA	N		
TB	27	TROCHODENDRON GRANULOSA	PURPLE GLORY TREE	30 GAL	N/A	6-8' O.A.	Y		
PALM TREES	QTY	BOTANICAL NAME	COMMON NAME	CONT	GAL	SIZE	NATIVE	REMARKS	
CH	15	CHAMAEOROPUS HUMILIS	EUROPEAN FAN PALM	65 gal	N/A	2'-5" O.A.	N	MULTI TRUNK. FULL CANOPY.	
PHM	15	HYOPHORBE LAGENICALLIS	BOTTLE PALM	25 gal	N/A	6' O.A.	N	SINGLE TRUNK. FLORIDA FANCY.	
PHM	22	PHOENIX DACTYLOPERA 'MEDIUOL'	MEDUOL DATE PALM	14 CT	N/A	14' CT	N	STRAIGHT TRUNK. FULL CANOPY. DIAMOND CUT.	
PHS	15	PHOENIX ROBELENI	PHOENIX DATE PALM	25 gal	N/A	5' O.A. S'PRD	N	MULTI-TRUNK. FULL CANOPY. 3 TRUNK MIN.	
PHS	5	PHOENIX SYLVESTRIS	SYLVESTER DATE PALM	FIELD GROWN	N/A	10' CT	Y	STRAIGHT TRUNK. FULL CANOPY. MATCHED. DIAMOND CUT.	
RE*	65	ROYSTONIA ELEGATA	ROYAL PALM	NA	NA	14' W/9	Y	FULL CANOPY. MATCHED.	
SS	41	SABAL PALMETTO	CURVED CABBAGE PALM	NA	NA	18', 24', 30' OA. STGG.	Y	STRONG, UNIQUE CURVES. GREYWOOD	
A02	15	VEITCHIA MERRILLI	CHRISTMAS PALM	30 gal	N/A	10' O.A.	N	FULL CANOPY. DOUBLE TRUNK.	
A03	20	VEITCHIA MERRILLI	TRIPLE CHRISTMAS PALM	30 gal	N/A	10' O.A.	N	FULL CANOPY. TRIPLE TRUNK.	
VM1*	10	VEITCHIA MONTGOMERYANA	MONTGOMERY PALM	30 GAL	N/A	12' O.A.	N	SINGLE TRUNK. FULL CANOPY.	
VM2	5	VEITCHIA MONTGOMERYANA	MONTGOMERY PALM	30 GAL	N/A	8' O.A.	N	SINGLE TRUNK. FULL CANOPY.	
VM3	14	VEITCHIA MONTGOMERYANA	MONTGOMERY PALM	65 gal	N/A	18' O.A.	N	TRIPLE TRUNK. FULL CANOPY.	
SHRUBS	QTY	BOTANICAL NAME	COMMON NAME	CONT	SIZE	SPACE	NATIVE	REMARKS	
REB	12	ROSA AMERICANA 'GAINESVILLE BLUE'	BLUE CENTURY PLANT	5 gal	30" x 30"	3' O.C.	N	FULL & THICK	
CZ	1,618	CHRYSOBALANUS ICACO 'RED TIP'	REDTIP COCO PLUM	7 GAL	2.5" X 2.5"	2.5' O.C.	Y	FULL & THICK	
CLD	1,804	CLUSIA GUTTIFERA	SMALL LEAF CLUSIA	15 GAL	5" O.A.	3' O.C.	N	FULL & THICK. FLORIDA FANCY	
CM4	38	CODIAEUM VAR. 'ICETONE'	ICETONE CROTON	3 gal	2" X 2"	2.5' O.C.	Y	FULL & THICK	
CV9	3	CODIAEUM VAR. 'DREADLOCK'	DREADLOCK CROTON	3 gal	4" HT. 2" SPRD	2.5' O.C.	N	FULL & THICK	
CV11	37	CODIAEUM VAR. 'PIERISLET'	PIERISLET CROTON	3 gal	2" X 2"	2.5' O.C.	Y	FULL & THICK	
PM1	1,653	PODOCARPUS MACROPHYLLUS	PODOCARPUS	7 gal	2.5" X 2.5"	2.5' O.C.	N	FULL & THICK	
PP	138	PODOCARPUS MACROPHYLLUS	PODOCARPUS	3 gal	2" X 2"	2.5' O.C.	N	FULL	
V57	1,567	VIBURNUM ODORATISSIMUM	SWEET VIBURNUM	7 gal	2.5" X 2.5"	2.5' O.C.	N	FULL	
GROUND COVERS	QTY	BOTANICAL NAME	COMMON NAME	CONT	SIZE	SPACE	NATIVE	SPACING	REMARKS
ACI	228	ACALYPHA WILKENSIANA 'INFERN0'	INFERN0 COPPERLEAF	7 GAL	3X3	3' O.C.	N	36" o.c.	FULL & THICK
BEG	281	BEGONIA ODORATA 'ALBA'	WHITE ANGEL WING BEGONIA	3 GAL	2" X 2"	2' O.C.	Y	24" o.c.	FULL & THICK
BGR	40	BEGONIA 'RED DRAGON'	RED DRAGON BEGONIA	3 GAL	2" X 2"	2' O.C.	Y	24" o.c.	FULL & THICK
CME	108	CARISMA MACROCARPA 'EMERALD BLANKET'	EMERALD BLANKET NATAL PLUM	5 GAL	1.5" X 1.5"	24" O.C.	Y	24" o.c.	FULL & THICK
C02	513	CHRYSOBALANUS ICACO	GREEN COCOPLUM	5 GAL	3X3	3' O.A.	Y	36" o.c.	FULL & THICK
CI	513	CHRYSOBALANUS ICACO 'RED TIP'	RED TIPPED COCOPLUM	5 GAL	3X3	3' O.A.	Y	36" o.c.	FULL & THICK
CLN	757	CLUSIA GUTTIFERA 'NANA'	DWARF CLUSIA	3 GAL	1.5" X 1.5"	1.5' O.C.	N	18" o.c.	FULL & THICK. FLORIDA FANCY
CE3	23	CONCARPUS ERRECTUS 'SILVER'	SILVER BUTTWOOD	5 GAL	3X3	3' O.C.	Y	36" o.c.	FULL & THICK
HN	1,755	FIGUS MACROPHYLLA 'GREEN ISLAND'	GREEN ISLAND FIGUS	3 GAL	18" X 18"	24" O.C.	Y	24" o.c.	FULL & THICK. FLORIDA FANCY
HJ	54	HAMELIA PATENS 'NANA'	DWARF FIREBUSH	5 GAL	3" HT. X 2" SPD	2.5' O.C.	Y	30" o.c.	FULL & THICK
IXY	933	IKORA 'MAJI YELLOW'	MAJI YELLOW IKORA	3 GAL	24" X 24"	30" O.C.	Y	30" o.c.	THICK AND FULL
IXY	1,404	IKORA 'NORA GRANT'	PINK IKORA	3 GAL	24" X 24"	24" O.C.	N	24" o.c.	FULL & THICK
JAS	477	JASMINUM VOLUBILE	WAX JASMINE	3 GAL	1.5" X 1.5"	1.5' O.C.	Y	18" o.c.	FULL & THICK
LM	603	LIRIOPE MUSCARI 'EVERGREEN GIANT'	GIANT GREEN LIRIOPE	3 gal	18" X 18"	18" O.C.	N	18" o.c.	FULL & THICK
MYR	1,081	MIRGATHES FRAGRANS 'COMPACT'	COMPACT SIMPSONS STOPPER	5 GAL	2" X 2"	2' O.C.	Y	24" o.c.	FULL & THICK
PEN	553	PENTAS LANGCOSTATA 'BUTTERFLY DEEP PINK'	BUTTERFLY DEEP PINK STAR CLUSTER	3 GAL	18" X 18"	18" O.C.	Y	18" o.c.	FULL & THICK
R0K	3,435	PHILODENDRON 'XANADO'	XANADO PHLODENDRON	5 GAL	2" O.C.	2' O.C.	Y	24" o.c.	FULL & THICK
PTV	1,166	PITOSPORIUM TOBIRA DWARF VARIEGATA	DWARF VARIEGATED PITOSPORIUM	5 GAL	2" X 2"	2' O.C.	Y	24" o.c.	FULL & THICK
PR2	1,846	PODOCARPUS MACR. 'PRINGLES'	DWARF PODOCARPUS	3 GAL	18" X 18"	24" O.C.	Y	24" o.c.	FULL & THICK
ROK	58	ROSA 'KNOCKOUT'	RED KNOCKOUT ROSE	3 GAL	2" HT. 2" SPD.	2' O.C.	N	24" o.c.	FULL & THICK. UNIFORM GROWTH
SCV	132	SALVIA COCCINEA	SCARLET SAGE	3 gal	1.5" X 1.5"	1.5' O.C.	Y	18" o.c.	FULL & THICK
SAY	189	SCHIFFERERIA ANDROXICOLA 'GOLD CAPPELLA'	DWARF VARIEGATED SCHEFFLERA	5 GAL	3X3	3' O.C.	Y	36" o.c.	FULL & THICK
SER	38	SERENOA REPENS SILVER	SAV PALMETTO	5 GAL	3X3	3' O.C.	Y	36" o.c.	FULL & THICK
JM	59	TRACHELOSPERMUM ASIATICUM	MINIMA JASMINE	TRAY	12" X 18" X 3" HT.	1' O.C.	N	24" o.c.	GROWN OUT LIKE SOD
TRF	1,820	TRIBSAMUM FLORIDANA	DWARF FAKAHONCHEE GRASS	3 GAL	2" X 2"	2' O.C.	Y	24" o.c.	FULL & THICK
VIB	573	VIBURNUM OBOVATUM 'WHORLED CLASS'	DWARF WALTER'S VIBURNUM	5 GAL	3X3	3' O.C.	Y	36" o.c.	FULL & THICK
ZAM	1,143	ZAMIA FLORIDANA	COONTIE	3 gal	18" X 18"	18" O.C.	Y	18" o.c.	FULL & THICK

## PLANTING DETAILS

