

Project Team:



Client & Property Owner: Mattamy Homes, LLC
1500 Gateway Blvd, Suite 220
Boynton Beach, Florida 33426

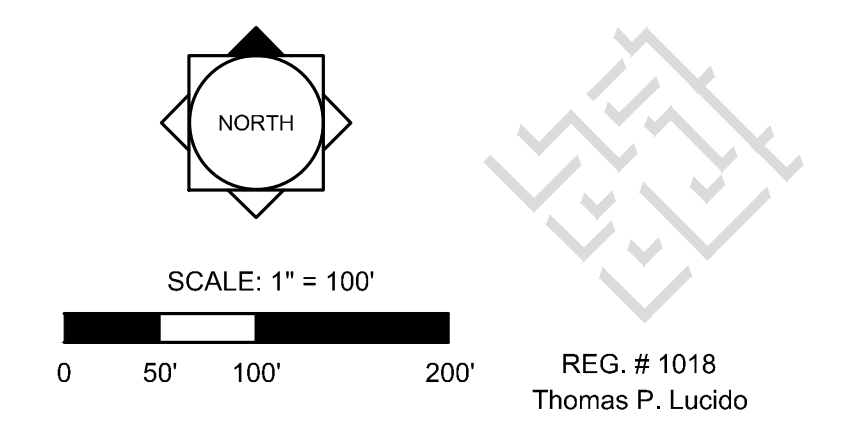
Land Planner / Landscape Architect: Lucido & Associates
701 East Ocean Boulevard
Stuart, Florida 34994

Engineer: Kinley Horn
445 24th Street, Suite 200
Vero Beach, Florida 32960

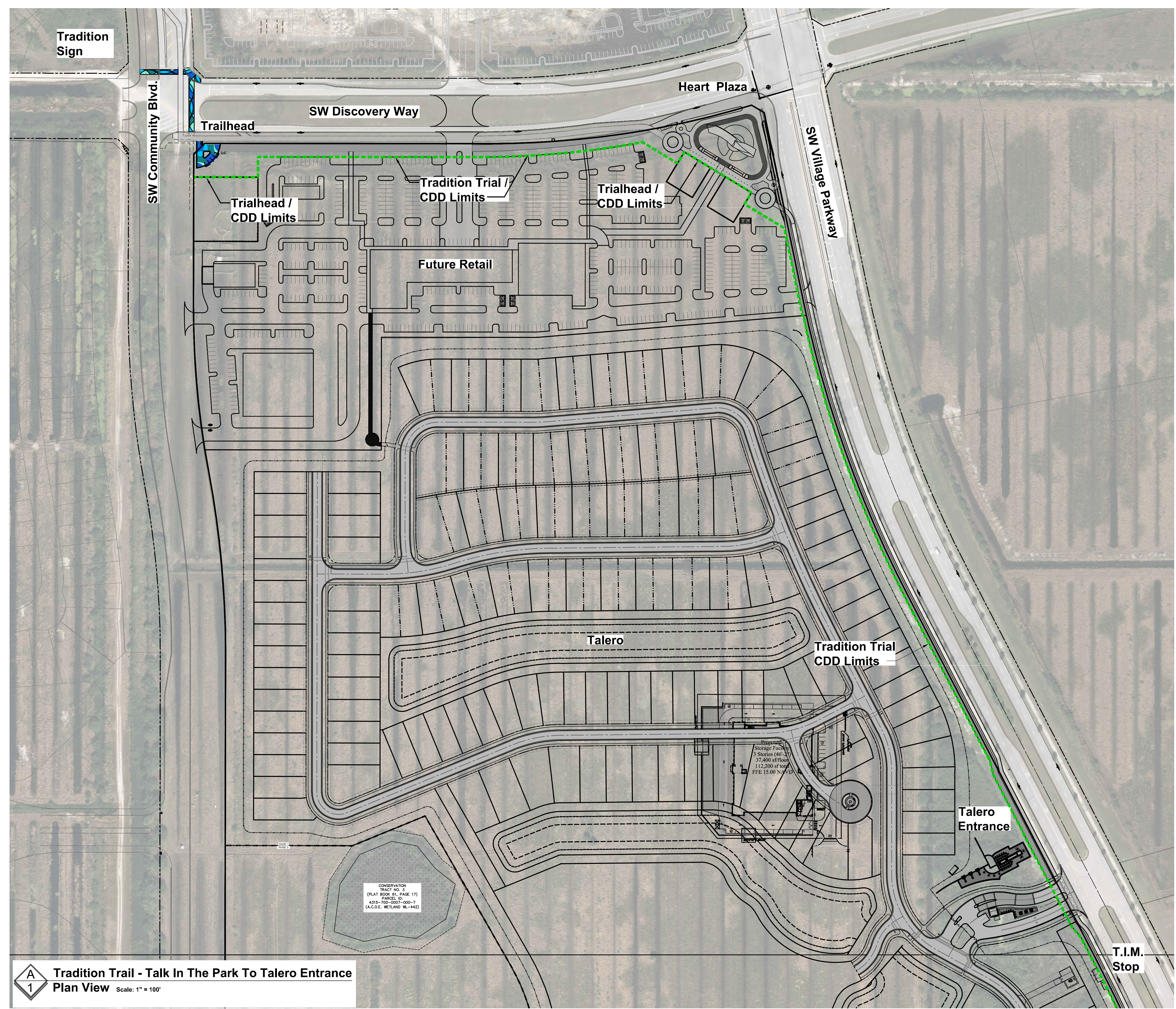
Surveyor: Caulfield & Wheeler, Inc.
410 S.E. Port St. Lucie Blvd.
Port St. Lucie, Florida 34984

Mattamy Homes
T.I.M. Pathway
Discovery & Village Hardscape
St. Lucie West, Florida
Plan View

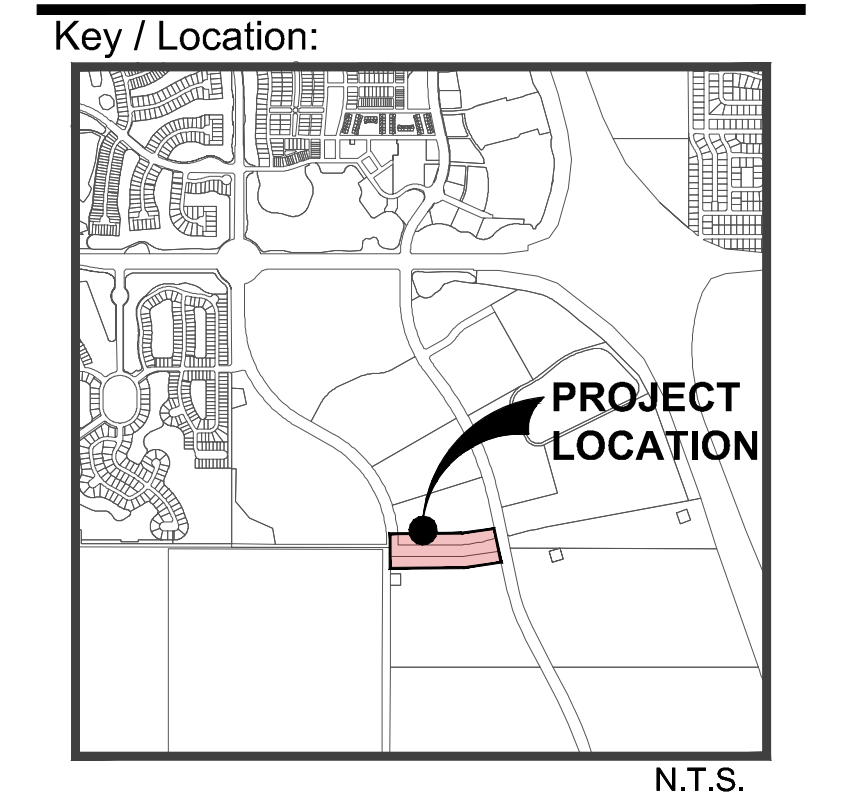
Date	By	Description
29MAR21	SJS	Client Review
07APR21	SJS	Client Review



Designer	SJS	Sheet
Manager	SG	1 of 5
Project Number	20-276.09	
Municipal Number	---	
Computer File	20-276.07 - Discovery - Trailhead To Heart Plaza.dwg	



A 1 Tradition Trail - Talk In The Park To Talero Entrance
Plan View Scale: 1" = 100'



Project Team:



Client & Property Owner: Mattamy Homes, LLC
 1500 Gateway Blvd., Suite 220
 Boynton Beach, Florida 33426

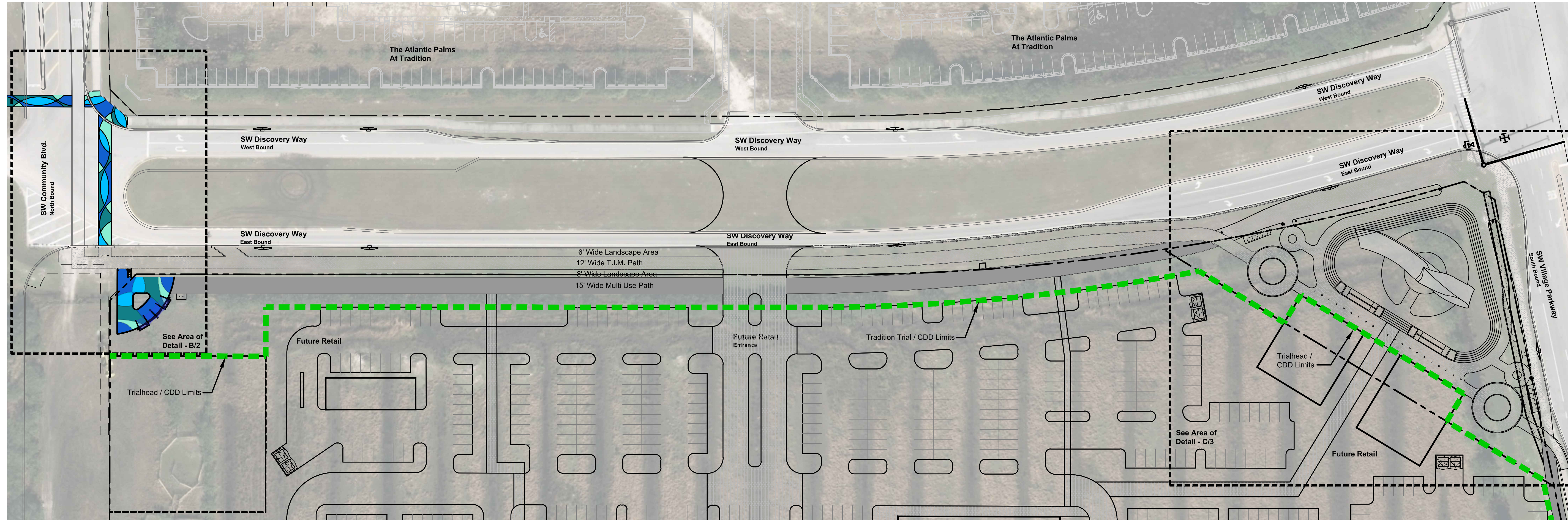
Land Planner / Landscape Architect: Lucido & Associates
 701 East Ocean Boulevard
 Stuart, Florida 34994

Engineer: Kinley Horn
 445 24th Street, Suite 200
 Vero Beach, Florida 32960

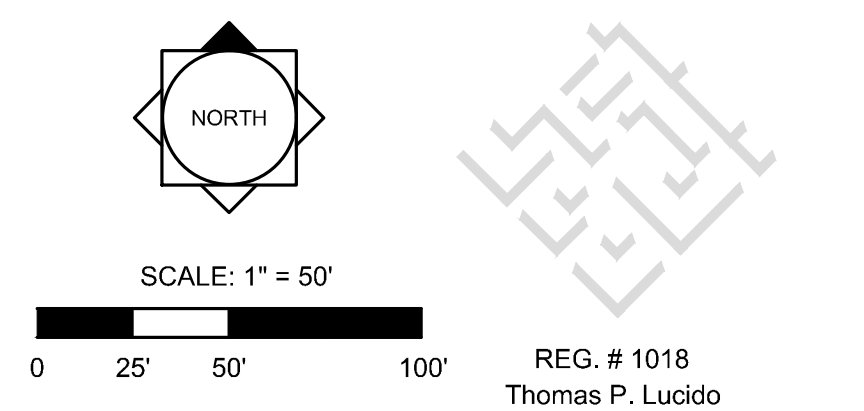
Surveyor: Caulfield & Wheeler, Inc.
 410 S.E. Port St. Lucie Blvd.
 Port St. Lucie, Florida 34984

Mattamy Homes
T.I.M. Pathway
Discovery & Village Hardscape
 St. Lucie West, Florida
Plan View

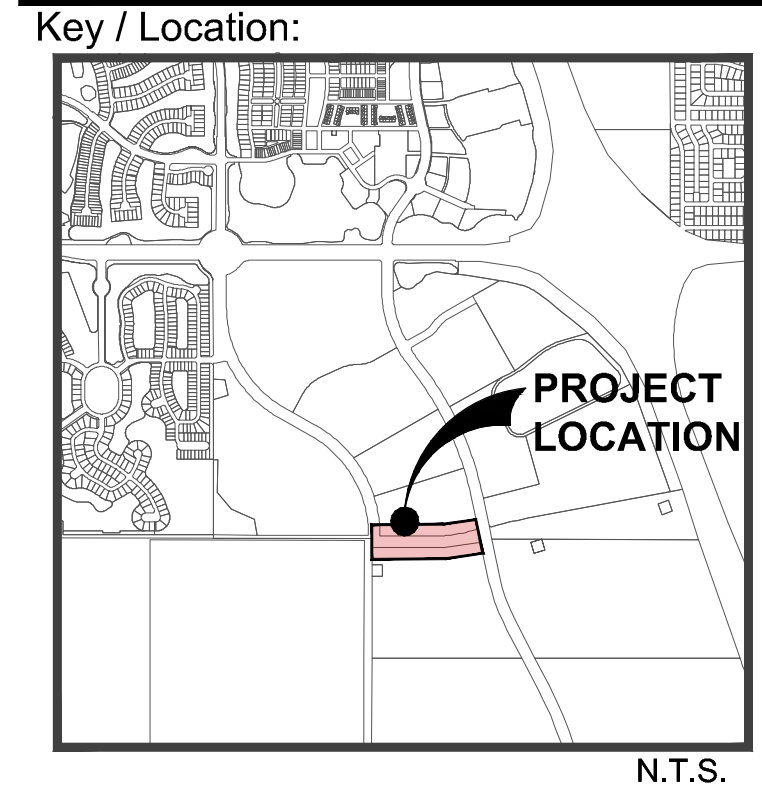
Date	By	Description
29MAR21	SJS	Client Review
07APR21	SJS	Client Review



B
2
Discovery Blvd. - Community Blvd To Village Parkway
Plan View Scale: 1" = 50'



Designer	SJS	Sheet
Manager	SG	2 of 5
Project Number	20-276.09	
Municipal Number	---	
Computer File	20-276.07 - Discovery - Trailhead To Heart Plaza.dwg	



Project Team:

mattamyHOMES

Client & Property Owner: Mattamy Homes, LLC
1500 Gateway Blvd., Suite 220
Boynton Beach, Florida 33426

Land Planner / Landscape Architect: Lucido & Associates
701 East Ocean Boulevard
Stuart, Florida 34994

Engineer: Kinley Horn
445 24th Street, Suite 200
Vero Beach, Florida 32960

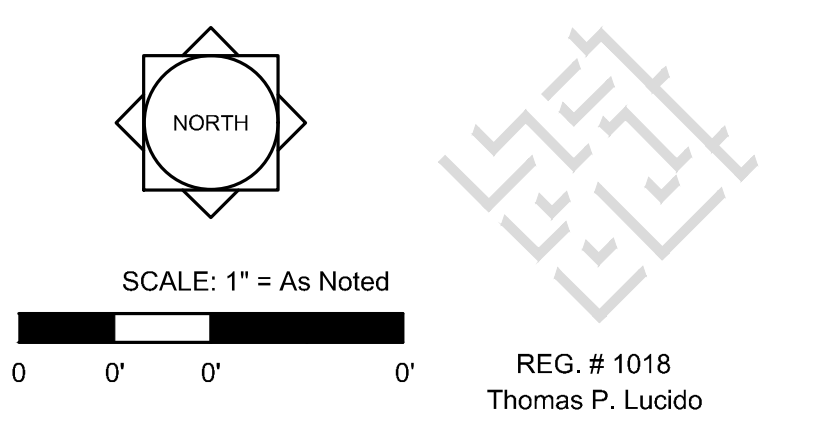
Surveyor: Caulfield & Wheeler, Inc.
410 S.E. Port St. Lucie Blvd.
Port St. Lucie, Florida 34984

Mattamy Homes T.I.M. Pathway Discovery & Village Hardscape

St. Lucie West, Florida

Areas Of Detail

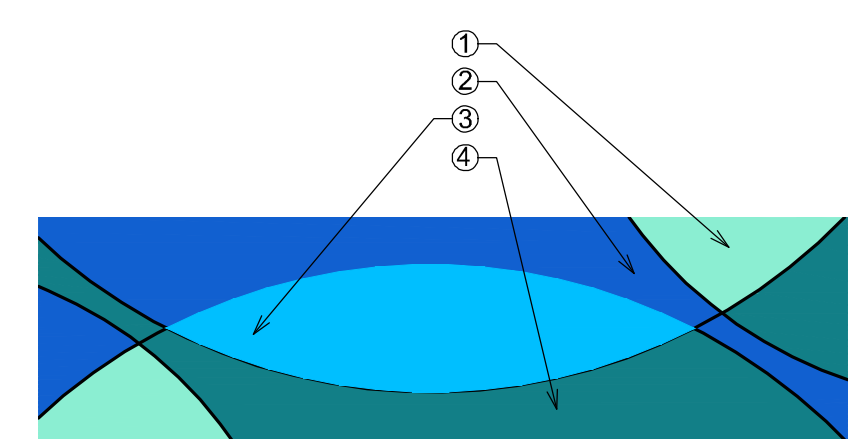
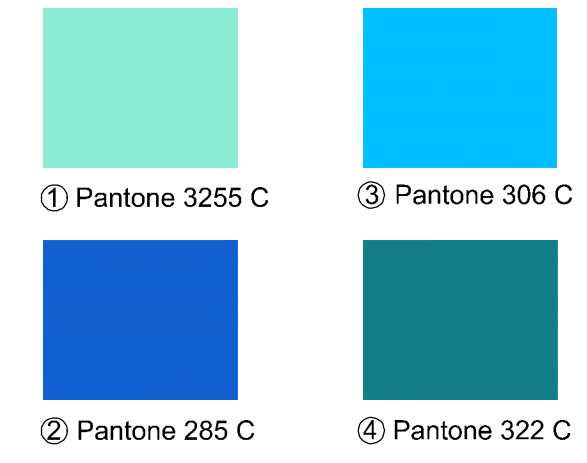
Date	By	Description
29MAR21	SJS	Client Review
07APR21	SJS	Client Review



© Copyright Lucido & Associates. These documents and their contents are the property of Lucido & Associates. Any reproductions, revisions, modifications or use of these documents without the express written consent of Lucido & Associates is prohibited by law.




Pantone Color Specifications



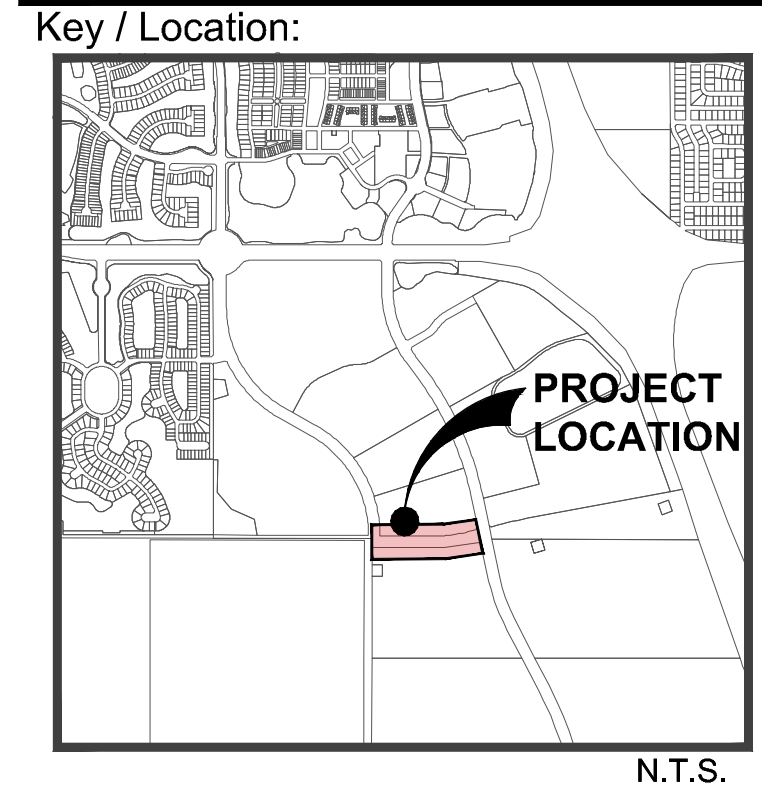
Typical Specialty Surface Color Selection Plan View Scale: 1" = 10'

Hardscape General Notes

- ALL DIMENSIONS TO BE FIELD VERIFIED
- ALL MECHANICAL DETAILS PROVIDED BY OTHERS
- STRUCTURAL & PERMIT DRAWINGS TO BE PROVIDED BY OTHERS
- SEE CIVIL ENGINEER'S PLANS FOR ALL UTILITIES
- ALL HARDSCAPE ITEMS TO BE INSTALLED PER MANUFACTURE SPECIFICATIONS
- ALL ITEMS TO BE INSTALLED PER LOCAL AND STATE BUILDING CODES
- ALL DESIGN DETAILS PROVIDED AS A CONVENIENCE TO CONTRACTOR TO COVEY DESIGN INTENT


**Discovery Boulevard - Community Blvd.
Seating Area
Plan View** Scale: 1" = 20'

Drawing Name: U:\Projects\Active\20-276.07 Mattamy Homes - Tradition Trail\Hardscape\ Apr 07, 2021 - 12:12pm 20-276.07 - Discovery - Trailhead To Heart Plaza.dwg



Project Team:

mattamyHOMES

Client & Property Owner: Mattamy Homes, LLC
 1500 Gateway Blvd., Suite 220
 Boynton Beach, Florida 33426

Land Planner / Landscape Architect: Lucido & Associates
 701 East Ocean Boulevard
 Stuart, Florida 34994

Engineer: Kinley Horn
 445 24th Street, Suite 200
 Vero Beach, Florida 32960

Surveyor: Cauffield & Wheeler, Inc.
 410 S.E. Port St. Lucie Blvd.
 Port St. Lucie, Florida 34984

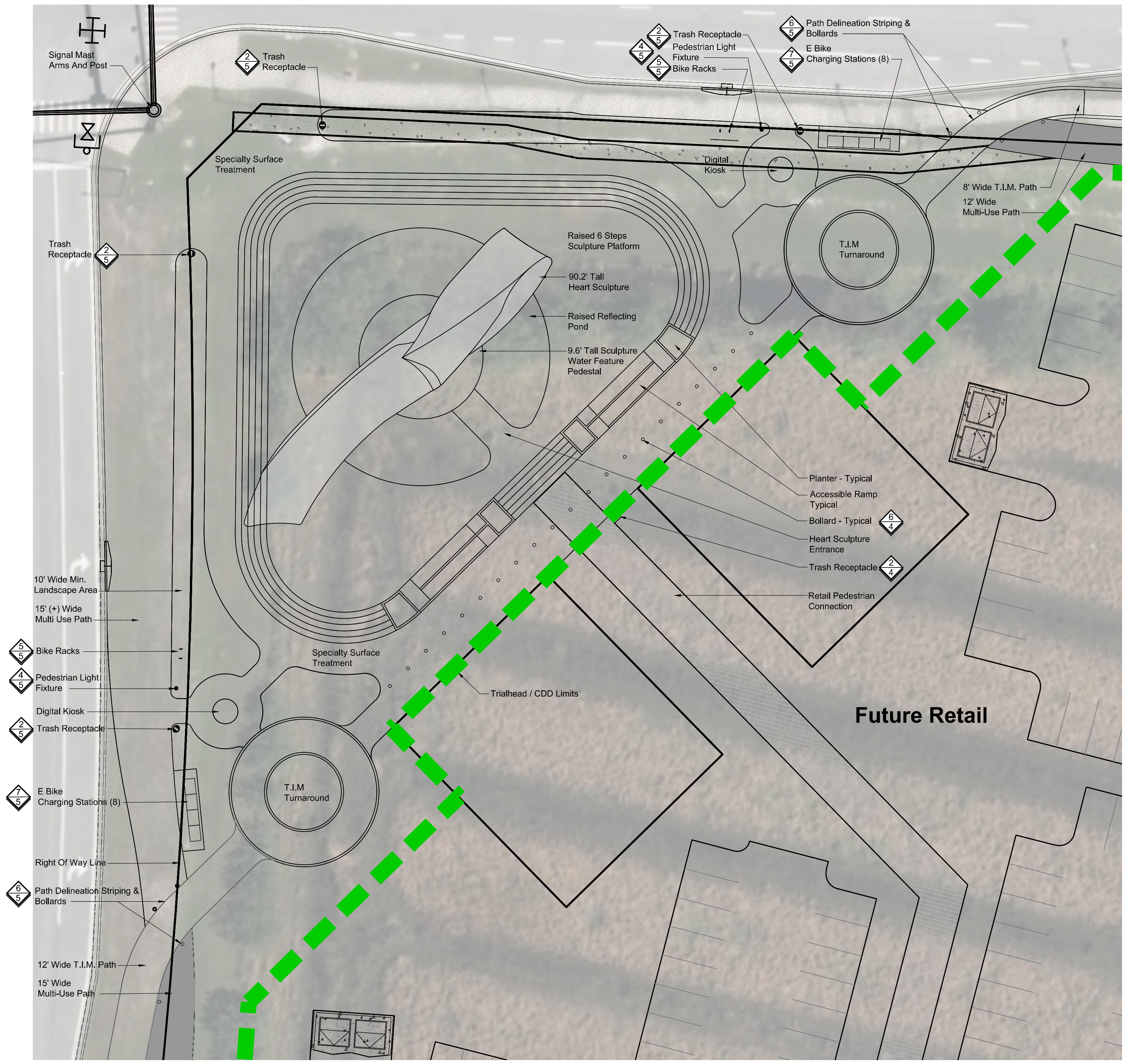
**Mattamy Homes
 T.I.M.
 Pathway
 Discovery & Village
 Hardscape**

St. Lucie West, Florida

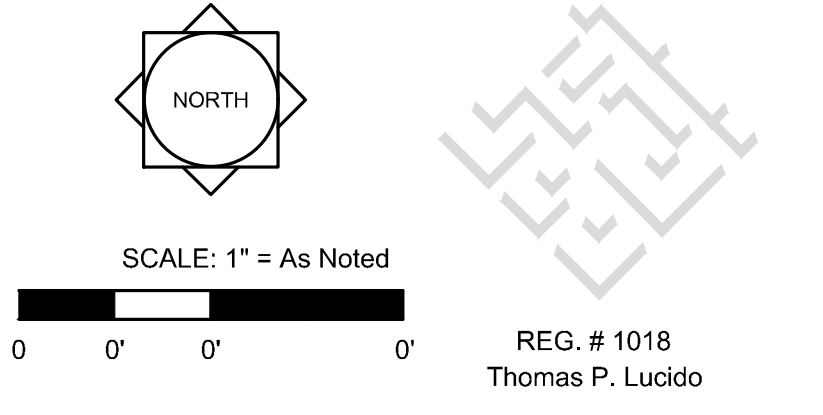
Areas Of Detail

Date	By	Description
29MAR21	SJS	Client Review
07APR21	SJS	Client Review

- Hardscape General Notes**
1. ALL DIMENSIONS TO BE FIELD VERIFIED
 2. ALL MECHANICAL DETAILS PROVIDED BY OTHERS
 3. STRUCTURAL & PERMIT DRAWINGS TO BE PROVIDED BY OTHERS
 4. SEE CIVIL ENGINEER'S PLANS FOR ALL UTILITIES
 5. ALL HARDSCAPE ITEMS TO BE INSTALLED PER MANUFACTURE SPECIFICATIONS
 6. ALL ITEMS TO BE INSTALLED PER LOCAL AND STATE BUILDING CODES
 7. ALL DESIGN DETAILS PROVIDED AS A CONVENIENCE TO CONTRACTOR TO COVEY DESIGN INTENT



**Discovery Boulevard - Community Blvd.
 Trail Head - Heart Sculpture
 Plan View** Scale: 1" = 20'



© Copyright Lucido & Associates. These documents and their contents are the property of Lucido & Associates. Any reproductions, revisions, modifications or use of these documents without the express written consent of Lucido & Associates is prohibited by law.

Drawing Name: J:\Projects Active\20-276.07 Mattamy Homes - Tradition Trail\Hardscape\ Apr 07, 2021 - 12:12pm 20-276.07 - Discovery - Trailhead To Heart Plaza.dwg

