

PARKER-YANNETTE design group, inc.

LANDSCAPE ARCHITECTURE PLANNING GRAPHICS 4425 Military Trail, Suite 202 Jupiter, Florida 33458

Telephone: (561) 747-5069 Fax: (561) 747-2041 Email: mail@pydg.com License #LC-0001347

# Symbols Legend

- D.E. DRAINAGE EASEMENT
- L.M.E. LAKE MAINTENANCE EASEMENT
- L.M.A.E. LAKE MAINTENANCE ACCESS EASEMENT
- R.O.W. RIGHT OF WAY
- U.E. UTILITY EASEMENT
- U.E.-R.A. UTILITY EASEMENT - RESTRICTED AREA (SEE "U.E." PLAT DEDICATION)
- STM. STORM SEWER LINE WITH MANHOLE
- STM. STORM SEWER LINE WITH CATCH BASIN
- SAN. SANITARY SEWER LINE WITH MANHOLE
- WM. WATER MAIN
- WATER SVC. TO LOT WITH METER W.M.
- SANITARY SVC. TO LOT WITH CLEANOUT C.O.
- O.E. OVERHANG EASEMENT
- G.E. GRADING EASEMENT
- PSL. PORT ST LUCIE
- L.E. LANDSCAPE EASEMENT
- D.S.E. DRAINAGE SWALE EASEMENT
- O.S. OPEN SPACE
- SIGN
- LOT NUMBER
- FIRE HYDRANT

## PSLUD Notes:

LANDSCAPE PLANS SHALL BE SUBMITTED FOR THE PROJECT INDICATING THE LOCATION OF LANDSCAPE AREAS, PERMETER WALLS, FOUNDATIONS, BERMS, TREE WELLS, FENCES, GATES, SIGNS, DECORATIVE ROCKS, SCULPTURE, FOUNTAINS, AND ANY OTHER FEATURES THAT MAY AFFECT THE LOCATION OF WATER, WASTEWATER, OR RECLAIMED WATER FACILITIES. ALSO, EXISTING AND PROPOSED WATER, WASTEWATER, AND RECLAIMED WATER LOT LINES AND ALL EASEMENT INFORMATION SHOWING OFFICIAL RECORD BOOK AND PAGE NUMBER SHALL BE INCLUDED. THE PLANS SHALL INCLUDE AND CONFORM TO THE FOLLOWING STANDARD NOTES:

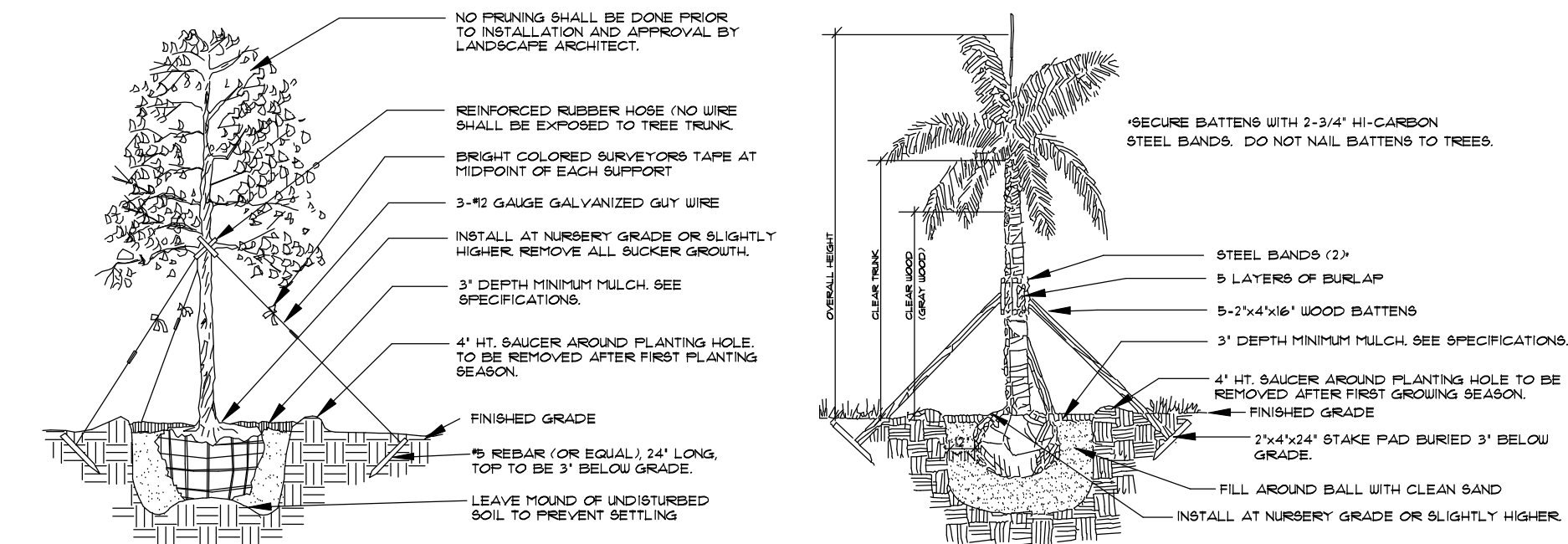
- 1) ALL LANDSCAPING WITHIN PSLUD UTILITY EASEMENTS AND WITHIN 10' OF PSLUD INFRASTRUCTURE SHALL COMPLY WITH CHAPTER 94 OF THE CITY'S CODE OF ORDINANCES AND PSLUD UTILITY EASEMENTS.
- 2) NO LANDSCAPING SHALL BE PLANTED IN SUCH A MANNER AS TO ADVERSELY AFFECT UTILITY INSTALLATION, OPERATION, OR MAINTENANCE.
- 3) NO LANDSCAPING OTHER THAN 800 GRASSES MAY BE PLANTED WITHIN A 9' RADIUS MAINTENANCE AREA OF ANY PSLUD APPURTENANCE SUCH AS WATER METERS, BACKFLOW DEVICES, FIRE HYDRANTS, SANITARY SEWER CLEANOUTS, MANHOLES, AIR RELEASE VALVES, ETC. WITH THE EXCEPTION OF FOXTAIL PALMS. TREES SHALL NOT BE PLANTED WITHIN 10' OF ANY PSLUD INFRASTRUCTURE. AS SPECIFICALLY APPROVED BY THE PSLUD, FOXTAIL PALMS MAY BE A DISTANCE NOT LESS THAN SEVEN (7) FEET OF ANY PSLUD INFRASTRUCTURE. ALL MEASUREMENTS ARE FROM OUTSIDE TO OUTSIDE, NOT CENTERLINE TO CENTERLINE. EXCEPT: OUTSIDE OF PIPE TO NEAREST POINT ON TREE TRUNK.
- 4) TREES SHALL NOT BE PLANTED WITHIN TEN (10) FEET OF ANY PSLUD MAINS OR APPURTENANCES UNLESS OTHERWISE APPROVED BY PSLUD.
- 5) UTILITY & DRAINAGE EASEMENTS TO REMAIN CLEAR OF TREES UNLESS OTHERWISE APPROVED BY THE EASEMENT HOLDER.

## General Notes:

- 1) ALL PLANT MATERIAL TO BE FLORIDA NO. 1 OR BETTER AND SHALL MEET OR EXCEED MINIMUM STANDARDS SET FORTH IN FLORIDA GRASSES AND STANDARDS, CURRENT EDITION.
- 2) A MINIMUM 50% OF ALL REQUIRED TREES (75% OF ALL SHRUBS) SHALL BE NATIVE SPECIES. THIS CRITERIA SHALL NOT APPLY TO REQUIRED STREET TREES.
- 3) A MAXIMUM OF 50% OF REQUIRED TREES MAY BE SUBSTITUTED WITH PALMS.
- 4) TREES ARE TO BE INSTALLED WITH A TEN (10) FOOT (10') MINIMUM SEPARATION FROM ANY UNDERGROUND PIPE (WATER, SEWER OR RECLAIM MAINS) AND/OR SERVICES, HYDRANTS, LIFT STATIONS, AND DRAINAGE CULVERTS OR BASINS. IN NO CASE SHALL A TREE ENCLOSED INTO A PSLUD WITHOUT PRIOR PSLUD APPROVAL. ONLY 500 CAN BE INSTALLED WITHIN 5' OF A FIRE HYDRANT. SEE PSLUD NOTES FOR ADDITIONAL INFORMATION.
- 5) STREET TREES SHOWN HEREON ARE CONCEPTUAL IN NATURE AND MAY BE FIELD ADJUSTED TO MAINTAIN PROPER CLEARANCE FROM REQUIRED IMPROVEMENTS INCLUDING DRIVEWAYS. TREES TO BE INSTALLED WITH A MINIMUM TEN (10) FOOT SEPARATION FROM ANY UNDERGROUND UTILITY UNLESS OTHERWISE APPROVED.
- 6) PER PER CODE OF ORDINANCES SECTION 94.004 PLANTING LOCATED WITHIN THE 20' SAFE SIGHT TRIANGLE AT INTERSECTIONS (OR TEN (10) FEET FROM THE EDGE OF A DRIVEWAY OR ALLEY) MUST MAINTAIN A CLEAR ZONE BETWEEN TWO (2) AND SIX (6) FEET FROM THE CROWN OF ROAD.
- 7) THE HOA AND ITS SUCCESSORS AND ASSIGNS SHALL ENSURE THAT REGULAR MAINTENANCE IS PERFORMED ON ALL ROYAL PALMS AND COCONUT PALMS AS SHOWN HEREON TO A LEVEL THAT SIGNIFICANTLY REDUCES THE LIKELIHOOD OF ANY INDIVIDUAL OR COLLECTIVE PARTY(IES) WHICH MAY CAUSE INJURY OR DAMAGE FROM FALLING INTO A ROAD, RIGHT-OF-WAY OR ONTO ANY PEDESTRIAN OR VEHICLE USE AREA.
- 8) ALL LANDSCAPED AREAS REQUIRING IRRIGATION SHALL BE PROVIDED WITH A FULLY AUTOMATED IRRIGATION SYSTEM THAT PROVIDES 100 PERCENT COVERAGE WITH 100 PERCENT OVERLAP WITH A MINIMUM DESIGN DISTRIBUTION UNIFORMITY (DU) OF 10.
- 9) ATTENTION LANDSCAPE CONTRACTOR: TREES PLANTED IN LOCATIONS OTHER THAN THOSE SHOWN MAY INTERFERE WITH UNDERGROUND PIPE - BEFORE CHANGING LOCATIONS, VERIFY ALL DEPTHS AND PROVIDE ROOT BARRIERS AS SPECIFIED ON DETAILS SHEET OR ELIMINATE TREE AS DEEMED NECESSARY. CONFLICTS REQUIRING DEVIATION FROM PLANS MUST BE BROUGHT TO THE ATTENTION OF THE LANDSCAPE ARCHITECT OF RECORD.
- 10) QUANTITIES ON PLANT LIST ARE FOR CONVENIENCE ONLY. THE LANDSCAPE CONTRACTOR IS RESPONSIBLE FOR ALL PLANTS SHOWN ON PLANTING PLANS. WHEN DISCREPANCIES OCCUR BETWEEN PLANT LIST AND PLANTING PLANS, THE PLANTS ARE TO OVERRIDE THE PLANT LIST IN ALL CASES.
- 11) ALL LANDSCAPING SHALL BE KEPT IN A HEALTHY GROWING CONDITION AT ALL TIMES.

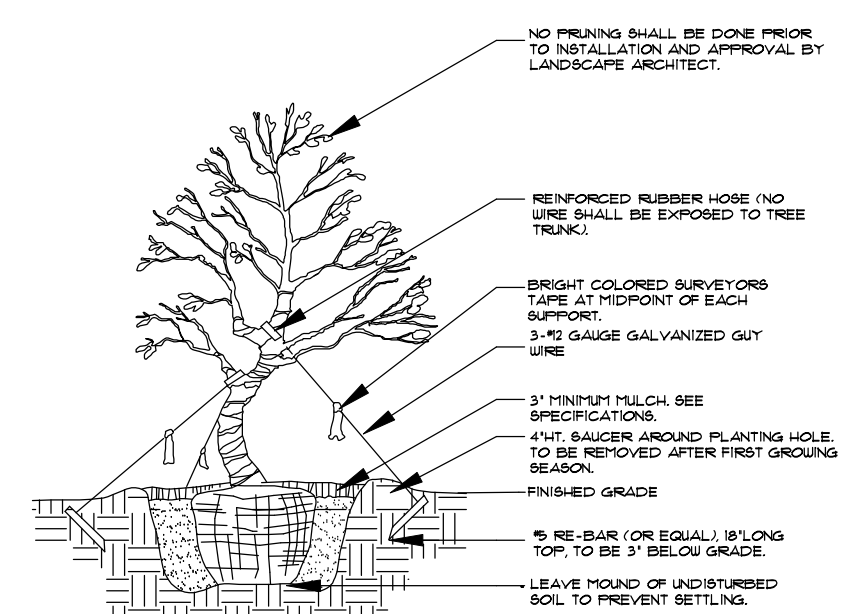
THE LOCATIONS OF TREES AS SHOWN ON THESE PLANS ARE APPROXIMATE. THE FINAL LOCATIONS MAY BE FIELD ADJUSTED TO ACCOMMODATE UNFORSEEN FIELD CONDITIONS TO COMPLY WITH SAFETY SETBACKS, AVOID UTILITIES, OR AS OTHERWISE DIRECTED OR APPROVED BY THE LANDSCAPE ARCHITECT. THE CONTRACTOR SHALL FLAG ALL TREE LOCATIONS FOR THE APPROVAL OF THE LANDSCAPE ARCHITECT PRIOR TO PLANTING.

## Planting Details



### Tree Planting

- SEE SPECIFICATIONS FOR BACKFILL MIXTURE AND FERTILIZATION.
- BRACING - SPECIAL SITE CONDITIONS MAY REQUIRE MODIFICATION TO BRACING TECHNIQUE. LANDSCAPE CONTRACTOR SHALL ADJUSTIVELY BRACE (OR USE) ALL TREES TO PREVENT EXCESSIVE MOVEMENT AND MAINTAIN A VERTICAL POSITION.

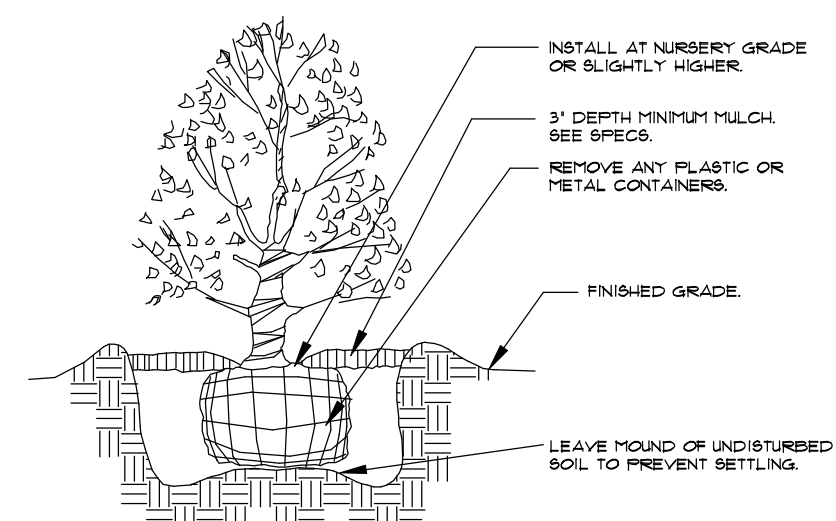


### Irregular & Multi-Stem Tree Planting

- FOR TREES 6"-14" DBH.
- SEE SPECIFICATIONS FOR BACKFILL MIXTURE AND FERTILIZATION.
- BRACING - SPECIAL SITE CONDITIONS MAY REQUIRE MODIFICATION TO BRACING TECHNIQUE. LANDSCAPE CONTRACTOR SHALL ADJUSTIVELY BRACE (OR USE) ALL TREES TO PREVENT EXCESSIVE MOVEMENT AND MAINTAIN A VERTICAL POSITION.

### Palm Planting

- APPLIES TO: ROYAL PALMS, QUEEN PALMS, ALEXANDER PALMS, FOXTAIL PALMS.
- SEE SPECIFICATIONS FOR BACKFILL MIXTURE AND FERTILIZATION.
- BRACING - SPECIAL SITE CONDITIONS MAY REQUIRE MODIFICATION TO BRACING TECHNIQUE. LANDSCAPE CONTRACTOR SHALL ADJUSTIVELY BRACE ALL PALMS TO PREVENT EXCESSIVE MOVEMENT AND MAINTAIN A VERTICAL POSITION.

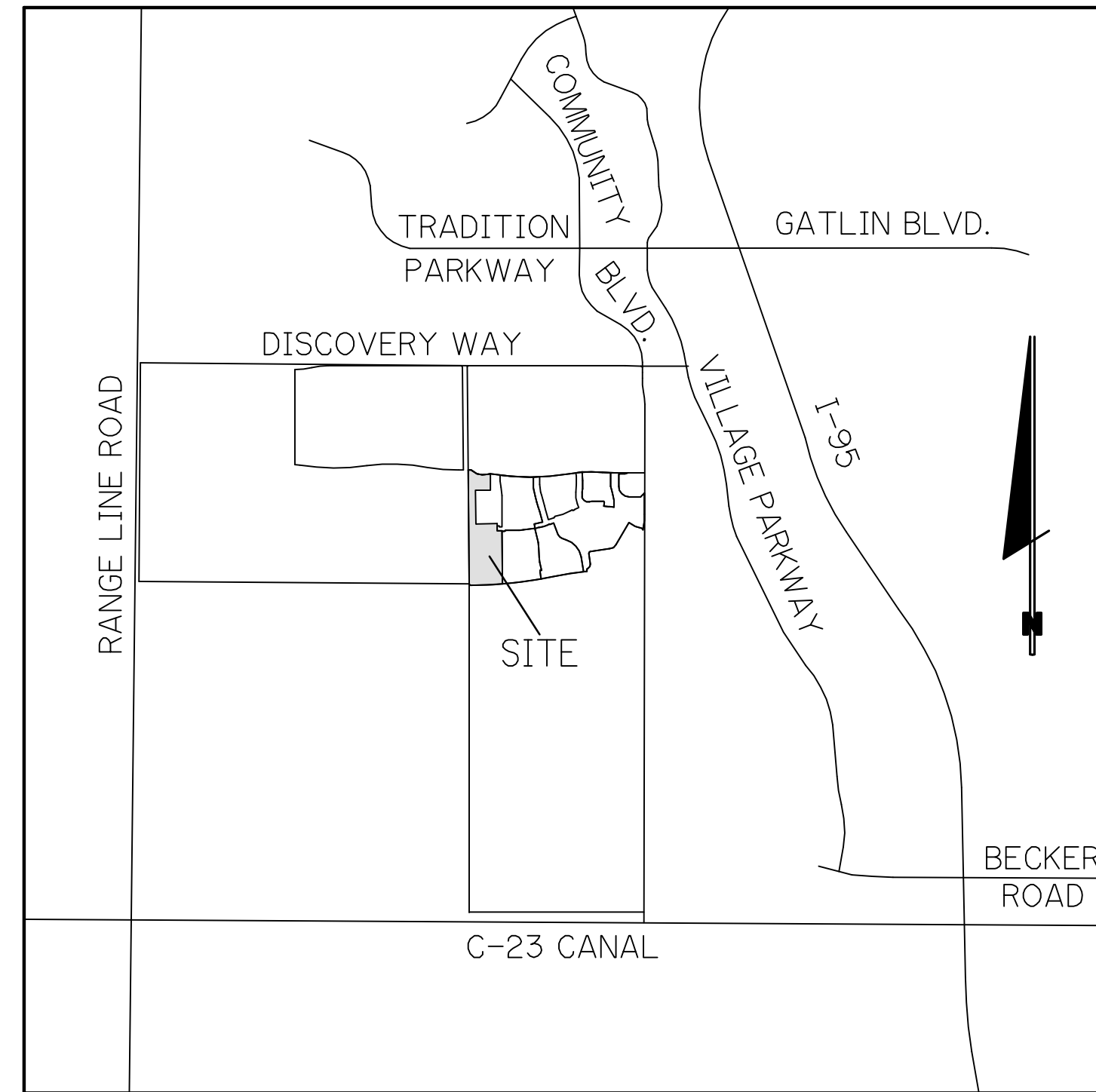


### Shrub Planting

- SEE SPECIFICATIONS FOR BACKFILL MIXTURE AND FERTILIZATION.

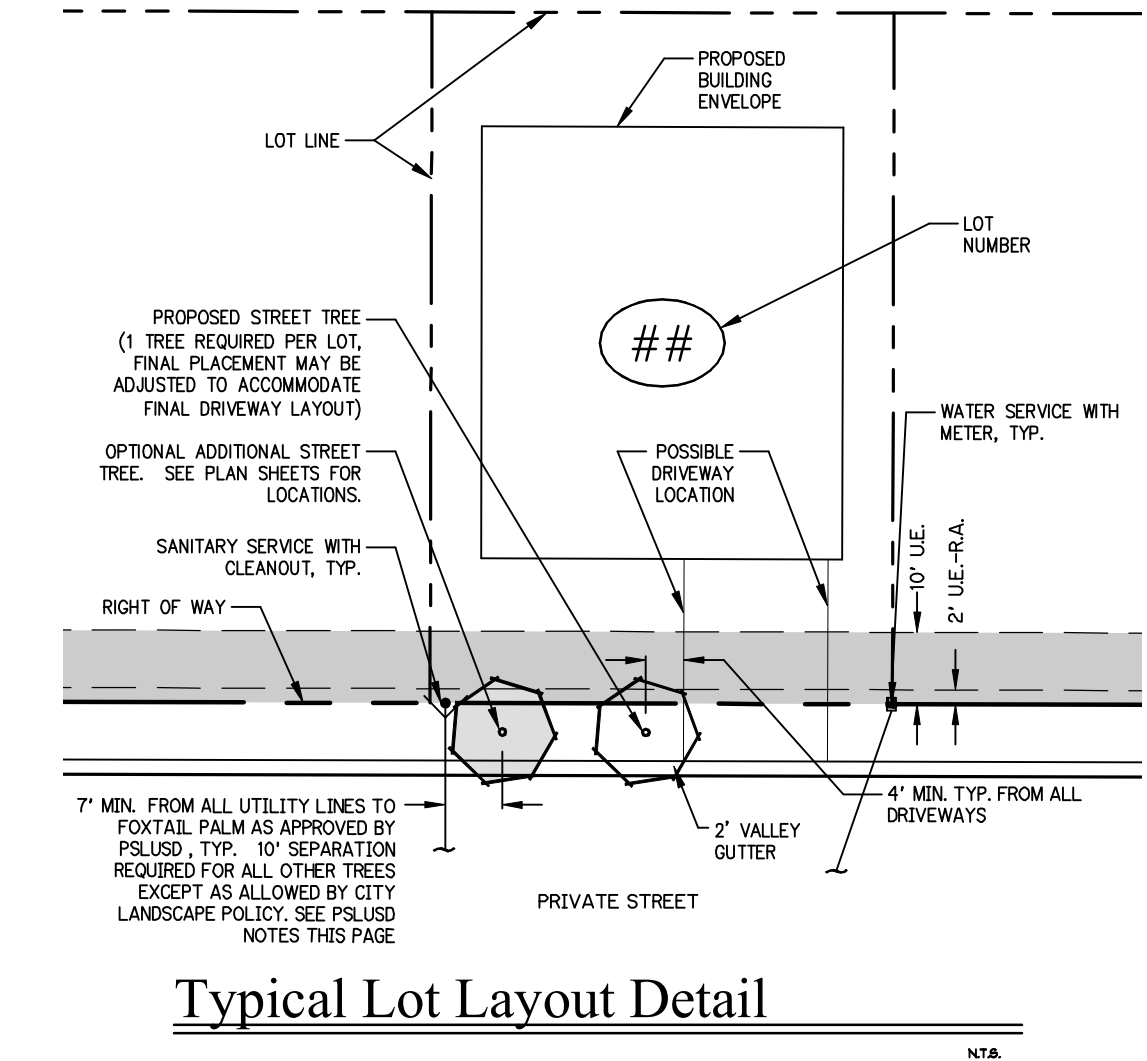
# RIVERLAND - PARCEL 'B'

## (RIVERLAND MPUD) LANDSCAPE PLANS PLAT SEVEN



## Sheet Index

P7-1 Cover Sheet, Index, General Notes, and Planting Details  
P7-2 thru P7-11 Plat Seven Landscape Plans



## Plant Specifications

SPECIES AND SIZE shall conform to those indicated on the drawings. Nomenclature shall conform to STANDARDIZED PLANT NAMES, current edition. All nursery stock shall be in accordance with Florida Grades and Standards for Nursery Plants, latest edition published by the Florida Department of Agriculture and Consumer Services. All plants not otherwise specified as being Florida Fancy or Specimen, shall be Florida Grade Number 1 or better as determined by the Florida Division of Plant Industry. Specimens means an exceptionally heavy, symmetrical, tightly knit plant, so trained or favored in its development that first appearance is unquestionable and outstandingly superior in form, number of branches, compactness and symmetry.

### GENERAL REQUIREMENTS

All plants shall be freshly dug, sound, healthy, vigorous, well branched and free of disease and insect eggs and larvae, and shall have adequate root systems. Trees for planting rows shall be uniform in size and shape. All materials shall be subject to approval by the Landscape Architect. Where any requirements are omitted from the plant list, the plants furnished shall be normal for the variety. Plants shall be pruned prior to delivery only upon the approval of the Landscape Architect.

### CONTAINER GROWN STOCK

All container grown material shall be healthy, vigorous, well rooted plants, and established in the container in which they are sold. The plants shall have tops which are good quality and in a healthy growing condition. An established container grown plant shall be grown in that container sufficiently long enough for the new fibrous roots to have developed so that the root mass will retain its shape and hold together when removed from the container. Plant root bound in containers are unacceptable.

### MEASUREMENTS

**Trees:** Height shall be measured from ground to the top most portion of the tree. Small, multi-trunked trees are measured to the top of main body of the crown. Spread shall be measured to the end of branching equally around the crown from the center of the trunk. Measurements are not to include any terminal growth. Single trunk trees shall be free of "Y" crotches that could be points of weak limb structure or disease infestation.

**Shrubs:** Heights shall be measured from the ground to the average points where mature plant growth stops. Spread shall be measured to the end of branching equally around the shrub mass. Measurements are not to include any terminal growth.

**Palms:** Clear Trunk (CT), shall be measured from the ground at the time of installation to the point where the mature aged trunk joins the immature or green portion of the trunk or the head. Overall height (OH), shall be measured from the ground at the time of installation to a point three quarters the length of the unopened bud. Palms with nested or burred trunks will not be accepted.

### SOIL

Planting soil for use in preparing backfill for plant pits shall be free from heavy clay, stones, lime, plants, roots or other foreign materials or noxious grasses (such as Bermuda or nut grass) and noxious weeds. It shall not contain toxic substances which may be harmful to plant growth.

### COMMERCIAL FERTILIZER

Two fertilizer shall be used in all types of plantings, except palms. Granular fertilizer shall be uniform in composition, dry and free flowing. This fertilizer shall be delivered to the site in the original unopened bags, each bearing the manufacturer's statement of analysis, and shall meet the following requirements: sixteen (16%) percent nitrogen, seven (7%) percent phosphorus, twelve (12%) percent potassium, plus iron. Tablet fertilizer ("Agiform" or equal) in 2 1/2 gram size shall meet the following requirements: twenty (20%) percent nitrogen, ten (10%) percent phosphorus, five (5%) percent potassium.

The two fertilizers will be applied at the following rates:

PLANT SIZE	16-1/2 "AGIFORM" TABLET (21 Grams)
1 gal.	1/4 lb.
3 gal.	1/3 lb.
7-15 gal.	1/2 lb.
1'-6" caliper	2 lbs./1" caliper
6" and larger	3 lbs./1" caliper

"Florida East Coast Palm Special" will be applied to all palms at installation at a rate of 1/2 lb. per inch of trunk caliper unless otherwise specified.

### MULCH

Mulch material shall be two (2) inches of shredded Class "A" mulch (sterilized and free of seeds), moistened at the time of application to prevent wind displacement. See plant list for specification.

### SUBSTITUTIONS

No substitutions of plant material types or size will be allowed without written consent of the Landscape Architect. B&B material will not be accepted as substitute for container grown material unless previously approved. Alternate substitutions shall be indicated in bid.

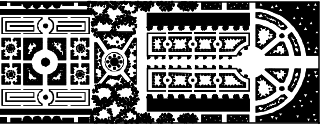
RIVERLAND - PARCEL 'B'  
Developer: Riverland Associates II, LLLP  
PORT ST. LUCIE, FLORIDA  
PLAT SEVEN COVER SHEET

DATE: 11/31  
DRAWN BY: AJO  
JOB NO.: 21-001  
SCALE: N/A  
FILENAME: Rvr Parcel B

REVISIONS:  
12/02/21  
12/21/21 Revv dring esmts

PLAT SEVEN COVER SHEET

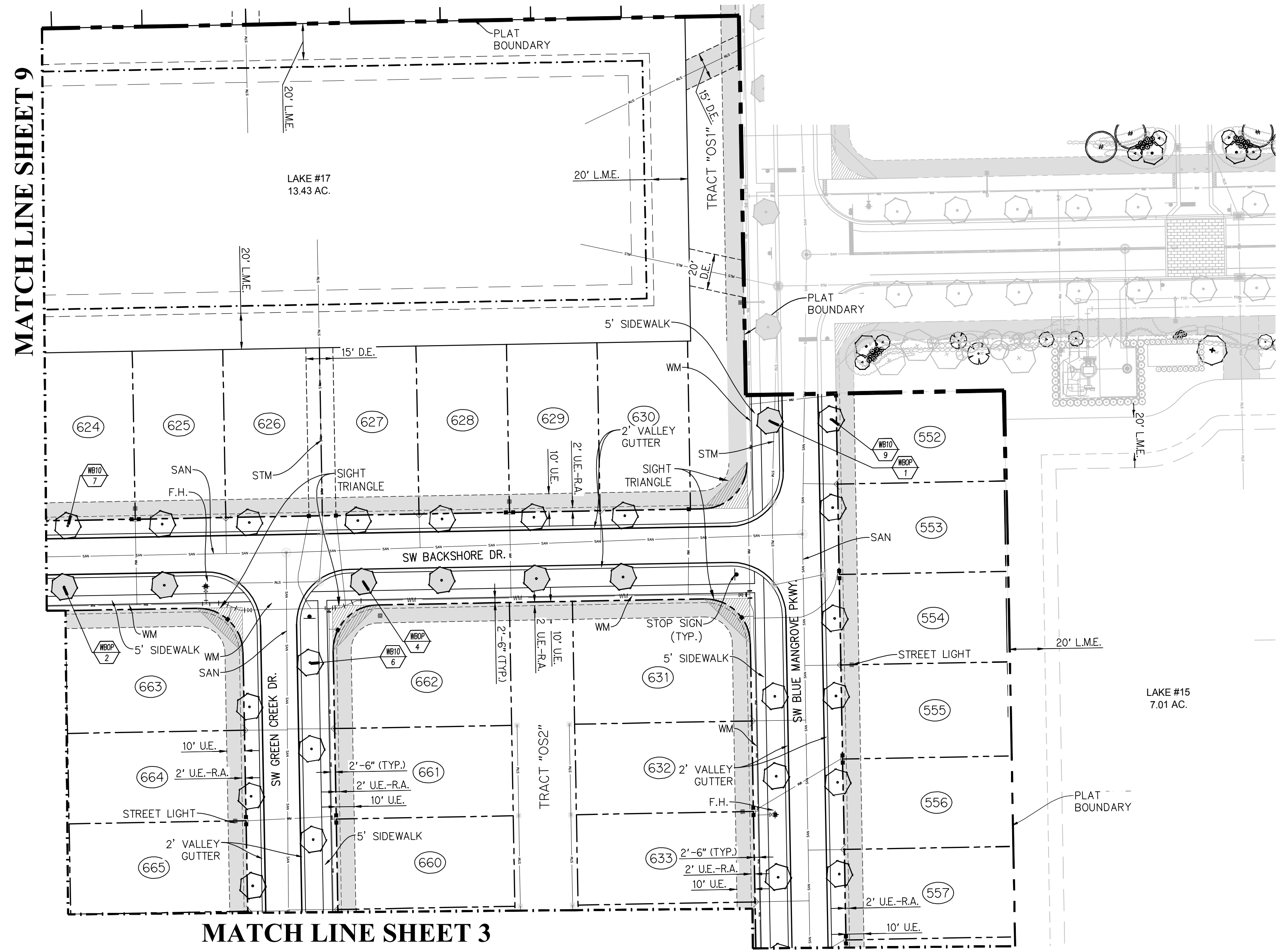
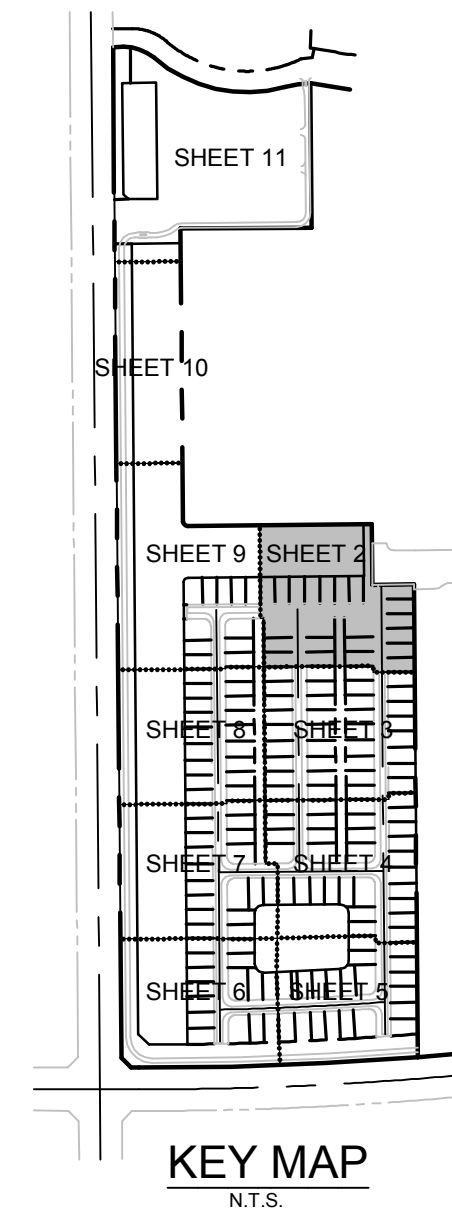
SHEET: P7-1



PARKER-YANNETTE  
design group, inc.

LANDSCAPE ARCHITECTURE  
PLANNING • GRAPHICS  
4425 Military Trail, Suite 202  
Jupiter, Florida 33458

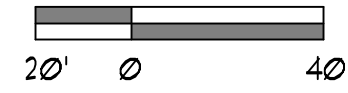
Telephone: (561) 747-5069  
Fax: (561) 747-2041  
Email: mail@pydg.com  
License #LC-0001347



**Plant List** (Sheet P7-2 Only)

SYM	QTY	NAME	SPECIFICATIONS
<b>PALMS</b>			
WE10	22	Wodyetia bifurcata / Foxtail Palm	10' c.t., straight trunk, full head, unscarred trunk, intact fronds
WE0P	7	Optional Additional Street Tree - Wodyetia bifurcata / Foxtail Palm	10' c.t., straight trunk, full head, unscarred trunk, intact fronds

**NOTE:**  
ALL PLANT MATERIAL SHALL MEET OR EXCEED SIZE AND CONTAINER SPECIFICATIONS IN PLANT LIST. PLANT MATERIALS NOT MEETING SPECIFICATIONS WILL BE REJECTED. CONTRACTOR TO COORDINATE AVAILABILITY ISSUES WITH OWNER PRIOR TO COMMENCING WORK.  
\* DENOTES NATIVE SPECIES



PSL PROJECT NO. P21-265

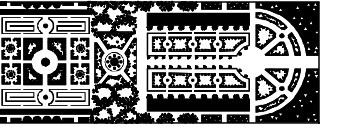
**RIVERLAND - PARCEL 'B'**  
Developer: Riverland Associates II, LLLP  
PORT ST. LUCIE, FLORIDA  
PLAT SEVEN STREET TREE PLAN

DATE: 11.3.21  
DRAWN BY: AJO  
JOB NO.: 21-081  
SCALE: 1" = 40'-0"  
FILENAME: Rvr Parcel B

REVISIONS:  
12.10.21  
12.21.21 Revv drng esmts

PLAT SEVEN  
STREET TREE  
PLAN

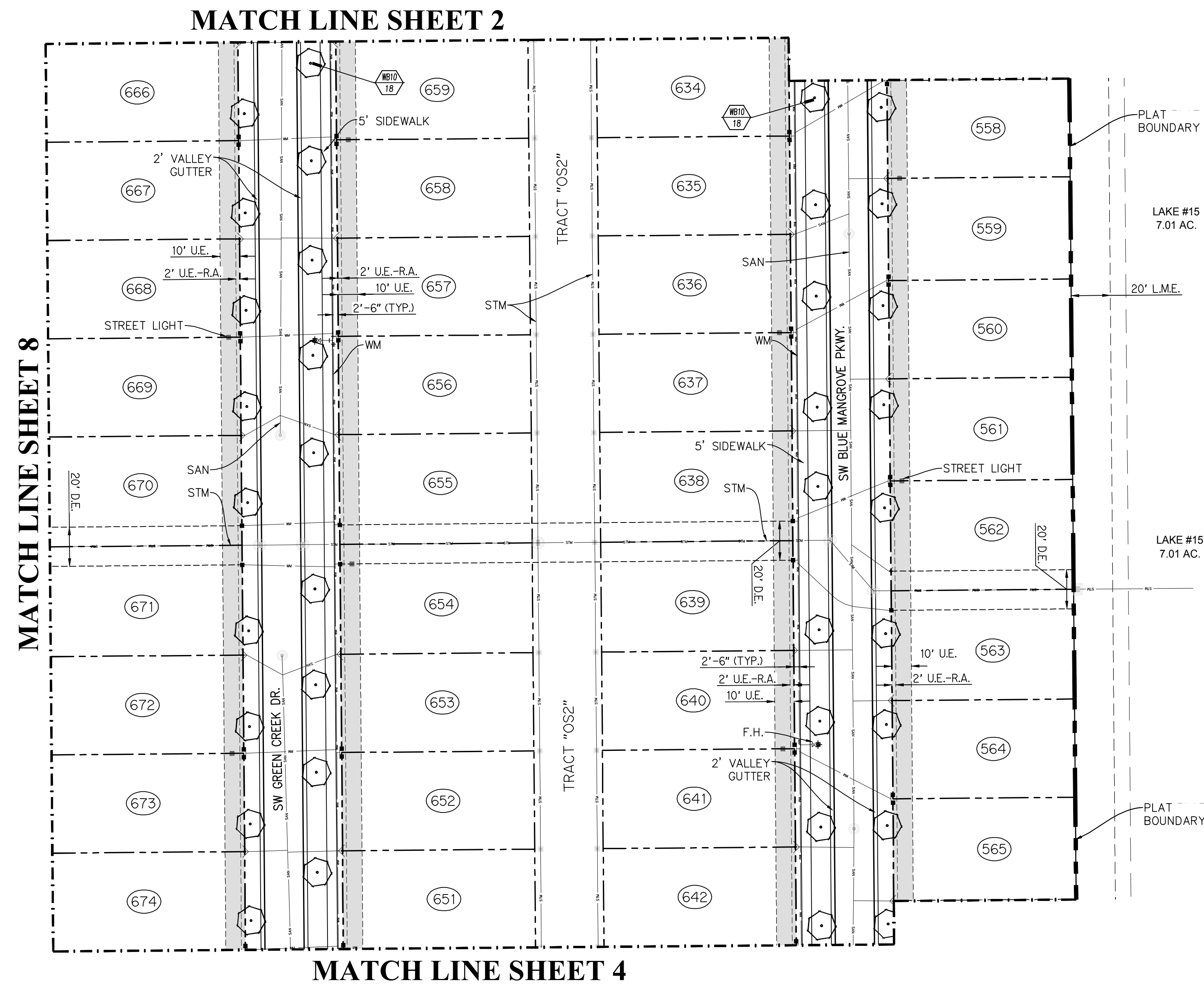
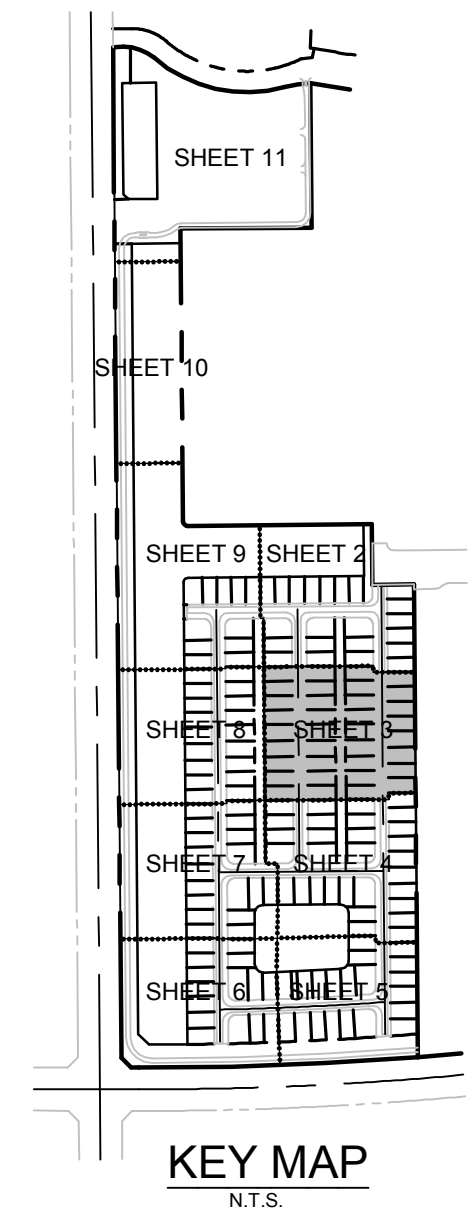
SHEET:  
**P7-2**



PARKER-YANNETTE  
design group, inc.

LANDSCAPE ARCHITECTURE  
PLANNING • GRAPHICS  
4425 Military Trail, Suite 202  
Jupiter, Florida 33458

Telephone: (561) 747-5069  
Fax: (561) 747-2041  
Email: mail@pydg.com  
License #LC-0001347



### Plant List (Sheet P7-3 Only)

SYM	QTY	NAME	SPECIFICATIONS
<b>PALMS</b>			
WE10	36	Wodyetia bifurcata / Foxtail Palm	10' c.t., straight trunk, full head, unscarred trunk, intact fronds

**NOTE:**  
ALL PLANT MATERIAL SHALL MEET OR EXCEED SIZE AND CONTAINER SPECIFICATIONS IN PLANT LIST. PLANT MATERIALS NOT MEETING SPECIFICATIONS WILL BE REJECTED. CONTRACTOR TO COORDINATE AVAILABILITY ISSUES WITH OWNER PRIOR TO COMMENCING WORK.

\* DENOTES NATIVE SPECIES



PSL PROJECT NO. P21-265

**RIVERLAND - PARCEL 'B'**  
Developer: Riverland Associates II, LLLP  
PORT ST. LUCIE, FLORIDA  
PLAT SEVEN STREET TREE PLAN

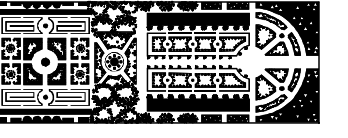
DATE: 11.3.21  
DRAWN BY: AJO  
JOB NO.: 21-081  
SCALE: 1" = 40'-0"  
FILENAME: Rvr Parcel B

**REVISIONS:**  
12.10.21  
12.21.21 Revv drng esmts

PLAT SEVEN  
STREET TREE  
PLAN

SHEET:  
**P7-3**

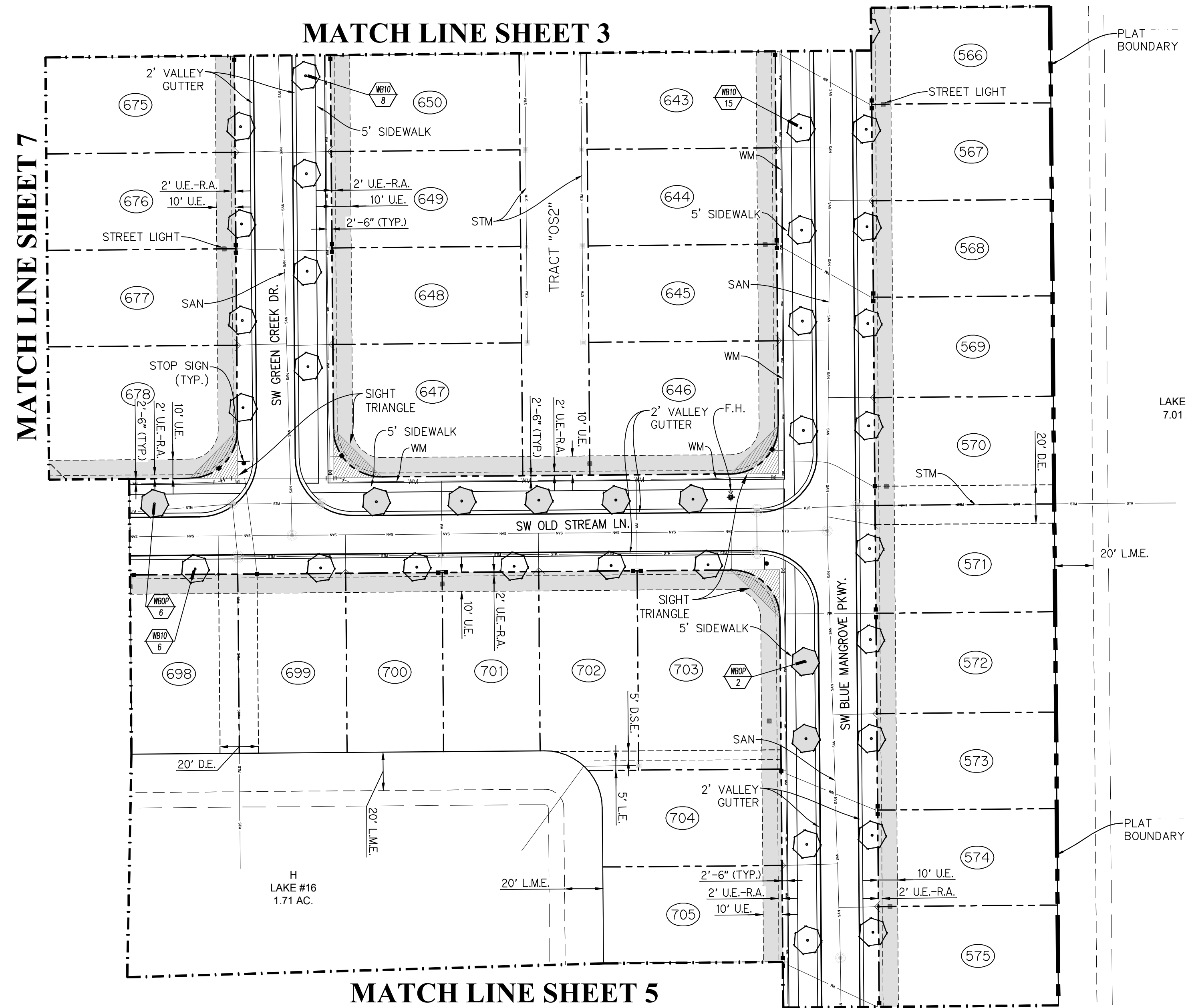
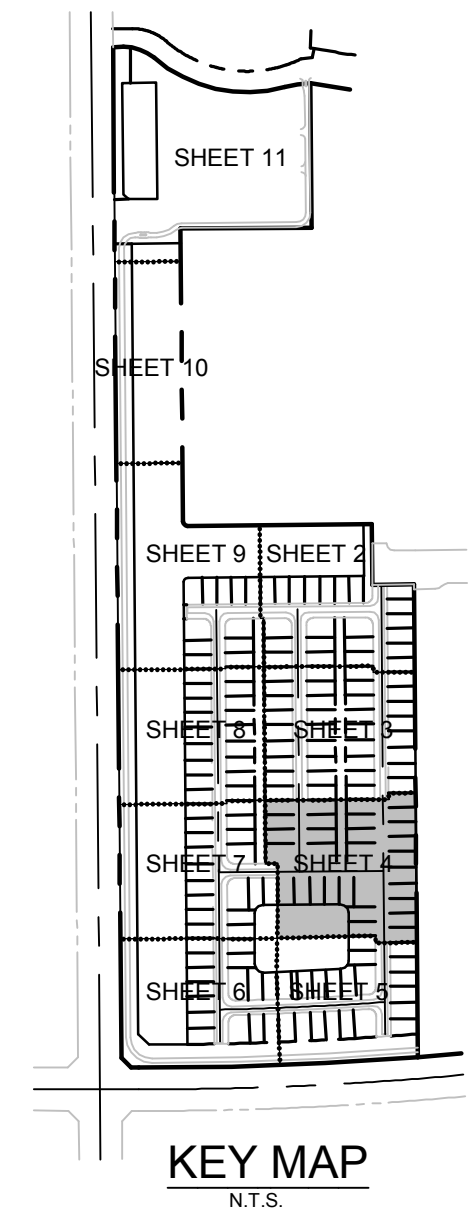




**PARKER-YANNETTE**  
design group, inc.

LANDSCAPE ARCHITECTURE  
PLANNING • GRAPHICS  
4425 Military Trail, Suite 202  
Jupiter, Florida 33458

Telephone: (561) 747-5069  
Fax: (561) 747-2041  
Email: mail@pydg.com  
License #LC-0001347



**Plant List** (Sheet P7-4 Only)

SYM	QTY	NAME	SPECIFICATIONS
<b>PALMS</b>			
WB10	29	Wodyetia bifurcata / Foxtail Palm	10' c.t., straight trunk, full head, unscarred trunk, intact fronds
WB0P	2	Optional Additional Street Tree - Wodyetia bifurcata / Foxtail Palm	10' c.t., straight trunk, full head, unscarred trunk, intact fronds

**NOTE:**  
ALL PLANT MATERIAL SHALL MEET OR EXCEED SIZE AND CONTAINER SPECIFICATIONS IN PLANT LIST. PLANT MATERIALS NOT MEETING SPECIFICATIONS WILL BE REJECTED. CONTRACTOR TO COORDINATE AVAILABILITY ISSUES WITH OWNER PRIOR TO COMMENCING WORK.

\* DENOTES NATIVE SPECIES



PSL PROJECT NO. P21-265

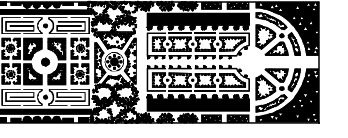
**RIVERLAND - PARCEL 'B'**  
Developer: Riverland Associates II, LLLP  
PORT ST. LUCIE, FLORIDA  
PLAT SEVEN STREET TREE PLAN

DATE: 11.3.21  
DRAWN BY: AJO  
JOB NO.: 21-081  
SCALE: 1" = 40'-0"  
FILENAME: Rvr Parcel B

REVISIONS:  
12.10.21  
12.21.21 Revv drngc esmts

PLAT SEVEN  
STREET TREE  
PLAN

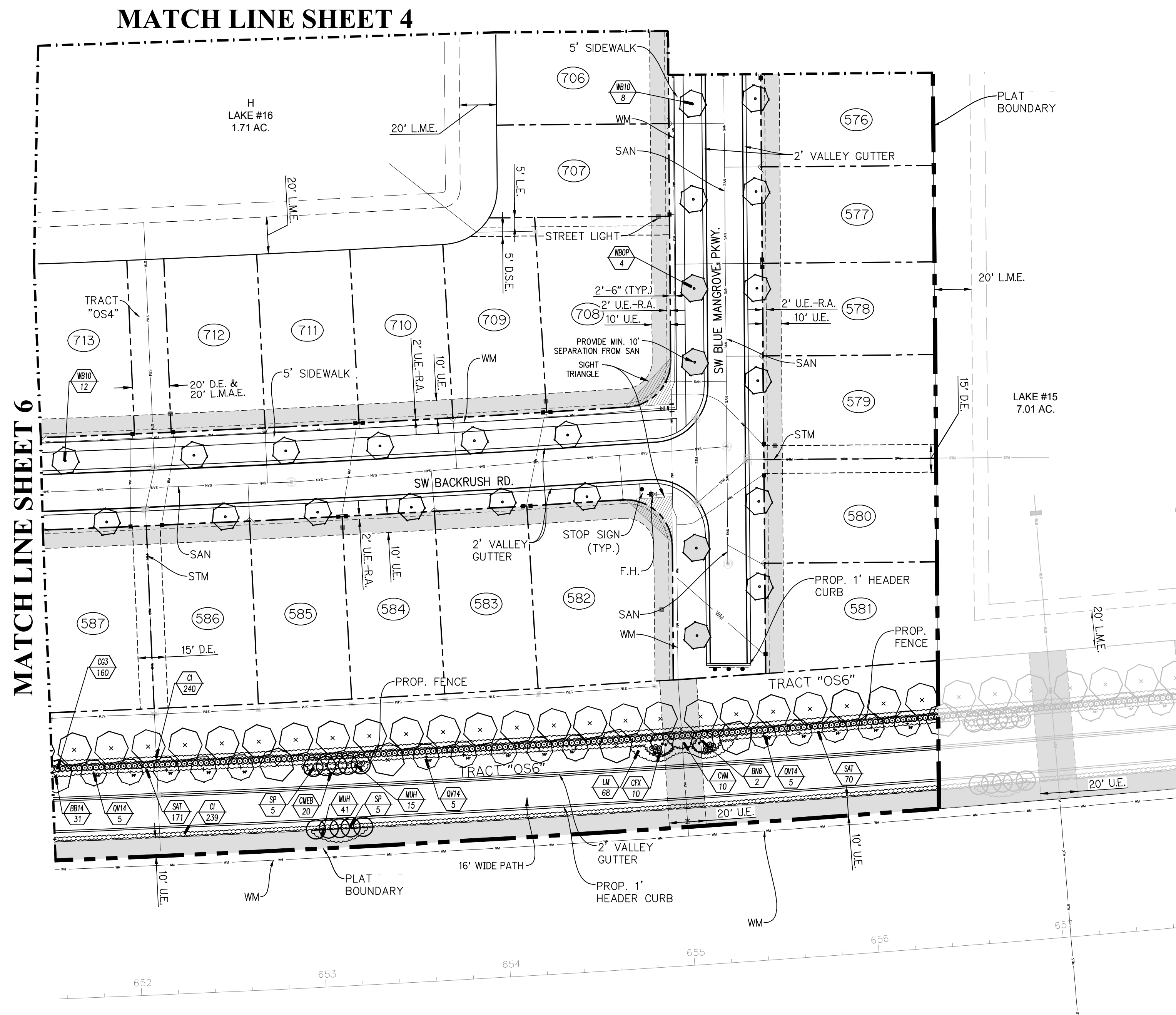
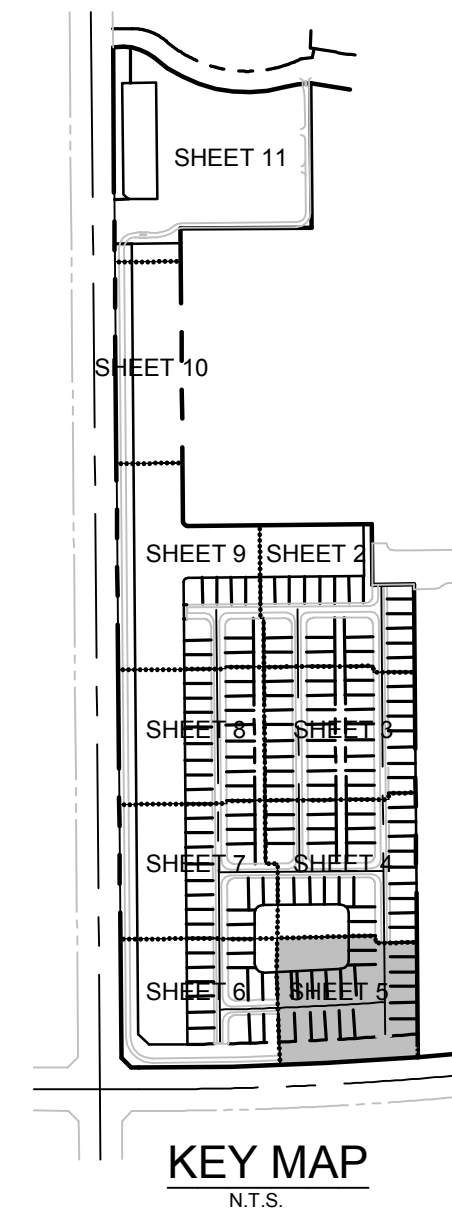
SHEET:  
**P7-4**



**PARKER-YANNETTE**  
design group, inc.

LANDSCAPE ARCHITECTURE  
PLANNING • GRAPHICS  
4425 Military Trail, Suite 202  
Jupiter, Florida 33458

Telephone: (561) 747-5069  
Fax: (561) 747-2041  
Email: mail@pydg.com  
License #LC-0001347



**Plant List (Sheet P7-5 Only)**

SYM	QTY	NAME	SPECIFICATIONS
<b>TREES</b>			
BB14	31	Bucida buceras 'Shady Lady'	14' x 7', 3" cal., straight trunk, full canopy
* QV14	15	Quercus virginiana / Live Oak	14' x 7', 3" cal., straight trunk, full canopy
<b>PALMS</b>			
BN6	2	Bismarckia nobilis 'Silver' / Silver Bismarck Palm	6' c.t., heavy cal., full frond
* SP	10	Sabal palmetto / Cabbage Palm	10' - 22' c.t. hts., staggered hts., hurricane cut, straight trunk, slick
WB10	20	Wodyetia bifurcata / Foxtail Palm	10' c.t., straight trunk, full head, unscarred trunk, intact fronds
WBOP	4	Optional Additional Street Tree - Wodyetia bifurcata / Foxtail Palm	10' c.t., straight trunk, full head, unscarred trunk, intact fronds
<b>SHRUBS, ACCENTS, AND GROUNDCOVER</b>			
CFX	10	Cordyline fruticosa 'Xerox'	3 gal., 22" x 20", full
CG3	100	Clusia guttifera / Small Leaf Clusia	1 gal., 3" x 2", full to base
CI	475	Chrysobalanus icaco / Coccolum	3 gal., 20" x 20", full to base
CNEB	20	Carissa macrocarpa 'Emerald Blankaet' / Dwarf Carissa	3 gal., 14" x 14", full, dense foliage to base, 24" o.c.
CVM	10	Codiaeum variegatum 'Mammy'	3 gal., 20" x 18", full
LM	68	Liriope muscari 'Super Blue'	1 gal., 12" x 14", full, 18" o.c.
* MUH	56	Muhlenbergia capillaris / Muhly Grass	3 gal., 22" x 18", full, purple flower, 30" o.c.
SAT	241	Schefflera arboricola 'Trinette' / Variegated Dwarf Schefflera	3 gal., 22" x 20", full

**NOTE:**  
ALL PLANT MATERIAL SHALL MEET OR EXCEED SIZE AND CONTAINER SPECIFICATIONS IN PLANT LIST. PLANT MATERIALS NOT MEETING SPECIFICATIONS WILL BE REJECTED. CONTRACTOR TO COORDINATE AVAILABILITY ISSUES WITH OWNER PRIOR TO COMMENCING WORK.  
\* DENOTES NATIVE SPECIES



PSL PROJECT NO. P21-265

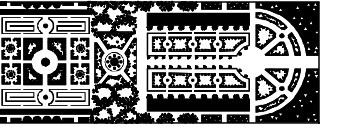
**RIVERLAND - PARCEL 'B'**  
Developer: Riverland Associates II, LLLP  
PORT ST. LUCIE, FLORIDA  
PLAT SEVEN STREET TREE PLAN

DATE: 11.3.21  
DRAWN BY: AJO  
JOB NO.: 21-081  
SCALE: 1" = 40'-0"  
FILENAME: Rvr Parcel B

REVISIONS:  
12/02/21  
12/21/21 Revv drng esmts

PLAT SEVEN  
STREET TREE  
PLAN

SHEET:  
**P7-5**

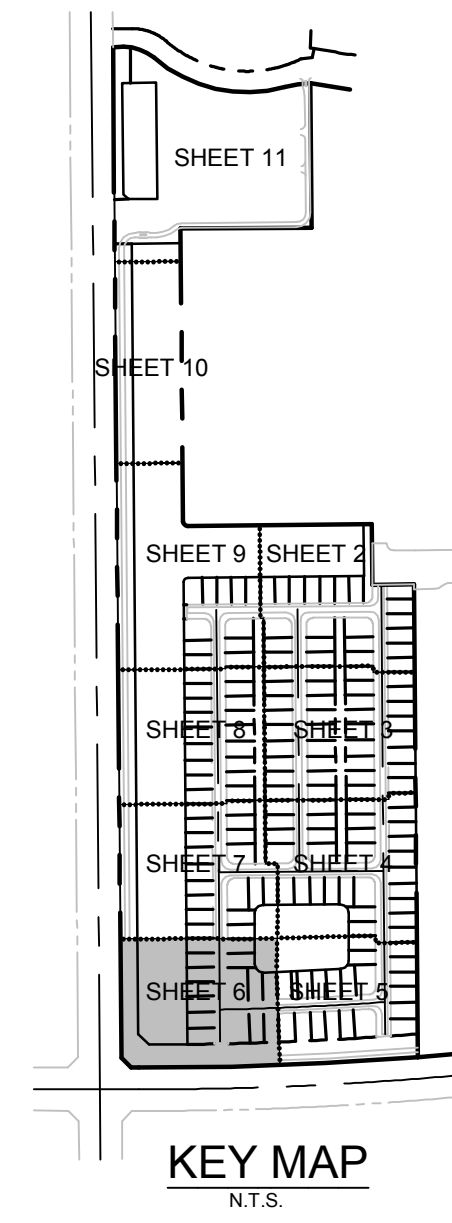
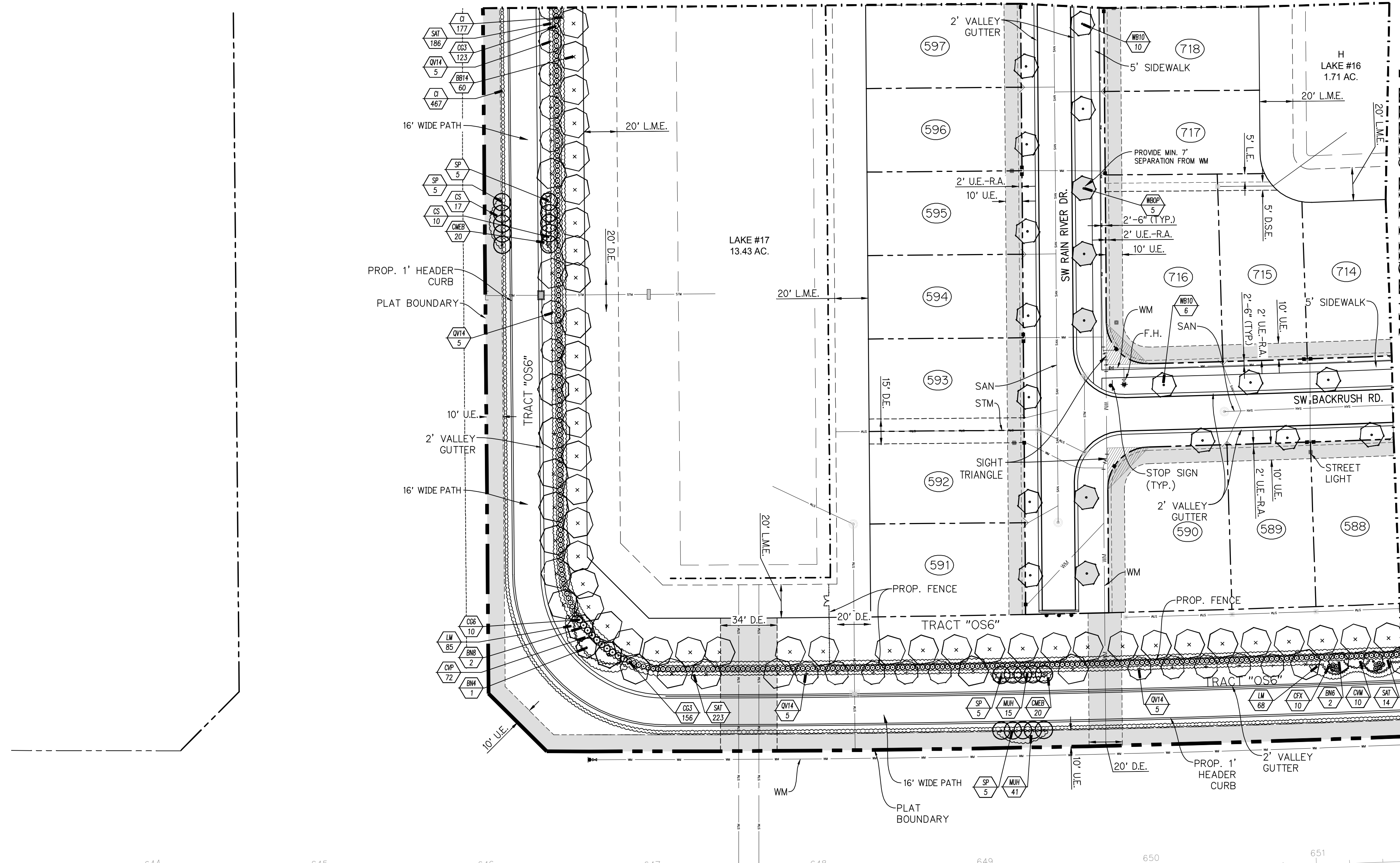


PARKER-YANNETTE  
design group, inc.

LANDSCAPE ARCHITECTURE  
PLANNING • GRAPHICS  
4425 Military Trail, Suite 202  
Jupiter, Florida 33458

Telephone: (561) 747-5069  
Fax: (561) 747-2041  
Email: mail@pydg.com  
License #LC-0001347

MATCH LINE SHEET 7



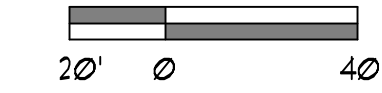
644 645 646 647 648 649 650 651

SW MARSHALL PARKWAY

Plant List (Sheet P7-6 Only)

SYM	QTY	NAME	SPECIFICATIONS
<b>TREES</b>			
BB14	60	Bucida buceras 'Shady Lady'	14' x 1', 3" cal., straight trunk, full canopy
* QV14	20	Quercus virginiana / Live Oak	14' x 1', 3" cal., straight trunk, full canopy
<b>PALMS</b>			
BN4	1	Bismarckia nobilis 'Silver' / Silver Bismarck Palm	4' c.t., heavy cal., full frond
BN6	2	Bismarckia nobilis 'Silver' / Silver Bismarck Palm	6' c.t., heavy cal., full frond
BN8	2	Bismarckia nobilis 'Silver' / Silver Bismarck Palm	8' c.t., heavy cal., full frond
* SP	20	Sabal palmetto / Cabbage Palm	10' - 22' c.t. hts., staggered hts., hurricane cut, straight trunk, slick
WB10	16	Wodyetia bifurcata / Foxtail Palm	10' c.t., straight trunk, full head, unscarred trunk, intact fronds
WBOP	5	Optional Additional Street Tree - Wodyetia bifurcata / Foxtail Palm	10' c.t., straight trunk, full head, unscarred trunk, intact fronds
<b>SHRUBS, ACCENTS, AND GROUND COVER</b>			
CFX	10	Cordyline fruticosa 'Xerox'	3 gal., 22" x 20", full
CG3	273	Clusia guttifer / Small Leaf Clusia	1 gal., 3' x 2', full to base
CG6	10	Clusia guttifer / Small Leaf Clusia	25 gal., 6' x 4', full to base, dense
CI	644	Chrysobalanus icaco / Coccolup	3 gal., 20" x 20", full to base
CMEB	40	Carissa macrocarpa 'Emerald Blanket' / Dwarf Carissa	3 gal., 14" x 14", full, dense foliage to base, 24" o.c.
CS	21	Cortaderia selloana / Pampas Grass	3 gal., 20" x 14", full
CVM	10	Codiaeum variegatum 'Mammy'	3 gal., 20" x 18", full
CVP	12	Codiaeum variegatum 'Petra'	3 gal., 20" x 18", full
LM	153	Liriope muscari 'Super Blue'	1 gal., 12" x 14", full, 18" o.c.
* MUH	56	Muhlenbergia capillaris / Muhly Grass	3 gal., 22" x 18", full, purple flower, 30" o.c.
SAT	423	Schefflera arboricola 'Trinette' / Variegated Dwarf Schefflera	3 gal., 22" x 20", full

NOTE:  
ALL PLANT MATERIAL SHALL MEET OR EXCEED SIZE AND CONTAINER SPECIFICATIONS IN PLANT LIST. PLANT MATERIALS NOT MEETING SPECIFICATIONS WILL BE REJECTED. CONTRACTOR TO COORDINATE AVAILABILITY ISSUES WITH OWNER PRIOR TO COMMENCING WORK.  
\* DENOTES NATIVE SPECIES



PSL PROJECT NO. P21-265

RIVERLAND - PARCEL 'B'  
Developer: Riverland Associates II, LLLP  
PORT ST. LUCIE, FLORIDA  
PLAT SEVEN STREET TREE PLAN

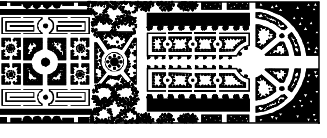
DATE: 11.3.21  
DRAWN BY: AJO  
JOB NO.: 21-081  
SCALE: 1" = 40'-0"  
FILENAME: Rvr Parcel B

REVISIONS:  
12/02/21  
12/21/21 Revv drngs esmts

PLAT SEVEN  
STREET TREE  
PLAN

SHEET:  
P7-6





PARKER-YANNETTE  
design group, inc.

LANDSCAPE ARCHITECTURE  
PLANNING • GRAPHICS  
4425 Military Trail, Suite 202  
Jupiter, Florida 33458

Telephone: (561) 747-5069  
Fax: (561) 747-2041  
Email: mail@pydg.com  
License # LC-0001347

**RIVERLAND - PARCEL 'B'**  
Developer: Riverland Associates II, LLLP  
PORT ST. LUCIE, FLORIDA  
**PLAT SEVEN STREET TREE PLAN**

DATE: 11.3.21  
DRAWN BY: AJO  
JOB NO.: 21-081  
SCALE: 1" = 40'-0"  
FILENAME: Rvr Parcel B

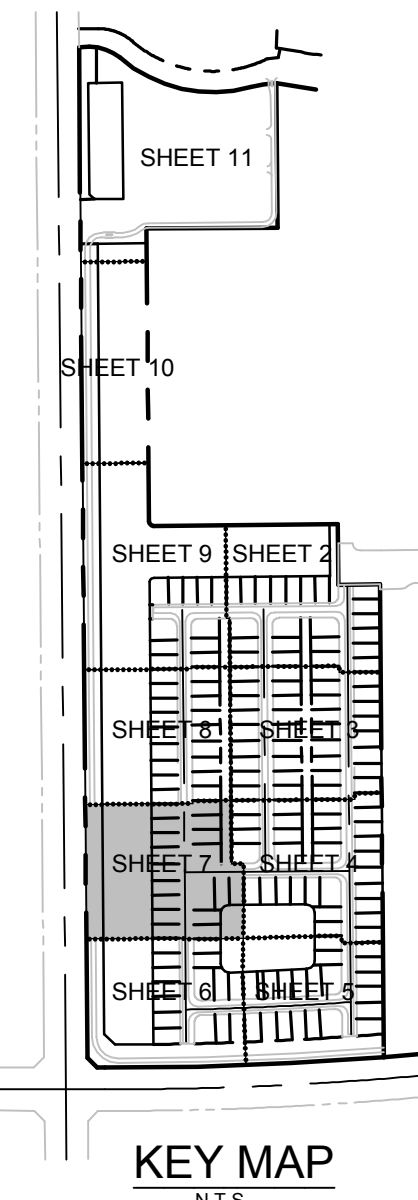
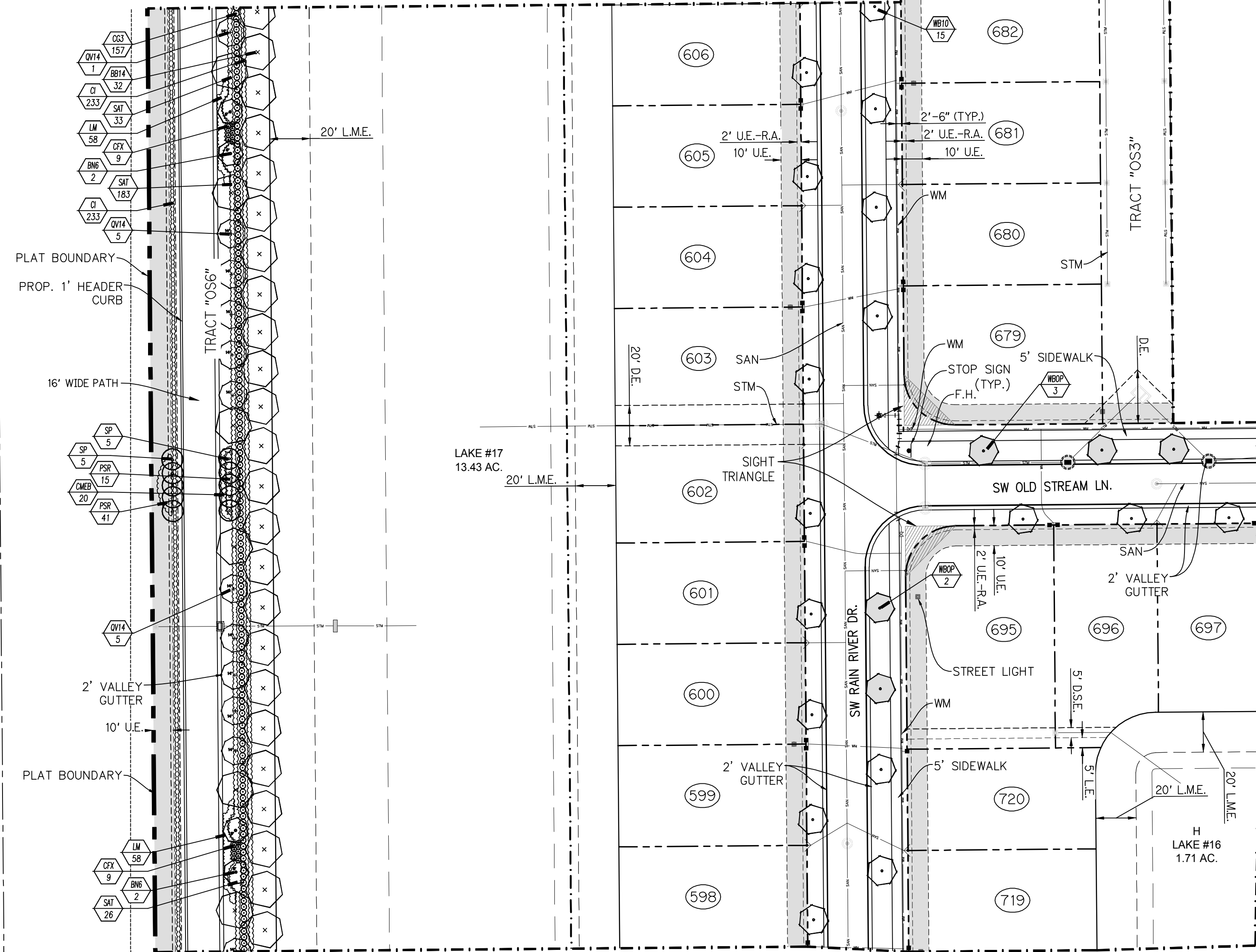
REVISIONS:  
12.10.21  
12.21.21 Revv drng esmts

PLAT SEVEN  
STREET TREE  
PLAN

SHEET:

P7-7

**MATCH LINE SHEET 8**



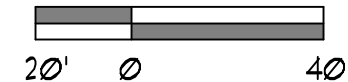
**MATCH LINE SHEET 6**

**Plant List (Sheet P7-7 Only)**

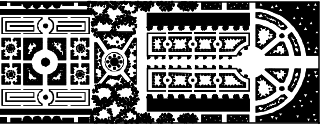
SYM	QTY	NAME	SPECIFICATIONS
<b>TREES</b>			
BB14	32	Bucida buceras 'Shady Lady'	14' x 7', 3" cal., straight trunk, full canopy
* QV14	11	Quercus virginiana / Live Oak	14' x 7', 3" cal., straight trunk, full canopy
<b>PALMS</b>			
BN6	4	Bismarckia nobilis 'Silver' / Silver Bismarck Palm	6' c.t., heavy cal., full frond
* SP	10	Sabal palmetto / Cabbage Palm	10' - 22' c.t. hts., staggered hts., hurricane cut, straight trunk, slick
WB10	15	Wodyetia bifurcata / Foxtail Palm	10' c.t., straight trunk, full head, unscarred trunk, intact fronds
WBOP	5	Optional Additional Street Tree - Wodyetia bifurcata / Foxtail Palm	10' c.t., straight trunk, full head, unscarred trunk, intact fronds
<b>SHRUBS, ACCENTS, AND GROUNDCOVER</b>			
CMEB	20	Carissa macrocarpa 'Emerald Blanket' / Dwarf Carissa	3 gal., 14" x 14", full, dense foliage to base, 24" o.c.
CFX	18	Cordyline fruticosa 'Xerox'	3 gal., 22" x 20", full
CG3	157	Clusia guttifera / Small Leaf Clusia	1 gal., 3" x 2", full to base
CI	466	Chrysobalanus icaco / Cocoplum	3 gal., 20" x 20", full to base
LM	116	Liriope muscari 'Super Blue'	1 gal., 12" x 14", full, 18" o.c.
FSR	56	Pennisetum setaceum 'Rubrum' / Red Fountain Grass	3 gal., 22" x 18", full, 24" o.c.
SAT	242	Schefflera arboricola 'Trinette' / Variegated Dwarf Schefflera	3 gal., 22" x 20", full

**NOTE:**  
ALL PLANT MATERIAL SHALL MEET OR EXCEED SIZE AND CONTAINER SPECIFICATIONS IN PLANT LIST. PLANT MATERIALS NOT MEETING SPECIFICATIONS WILL BE REJECTED. CONTRACTOR TO COORDINATE AVAILABILITY ISSUES WITH OWNER PRIOR TO COMMENCING WORK.

\* DENOTES NATIVE SPECIES



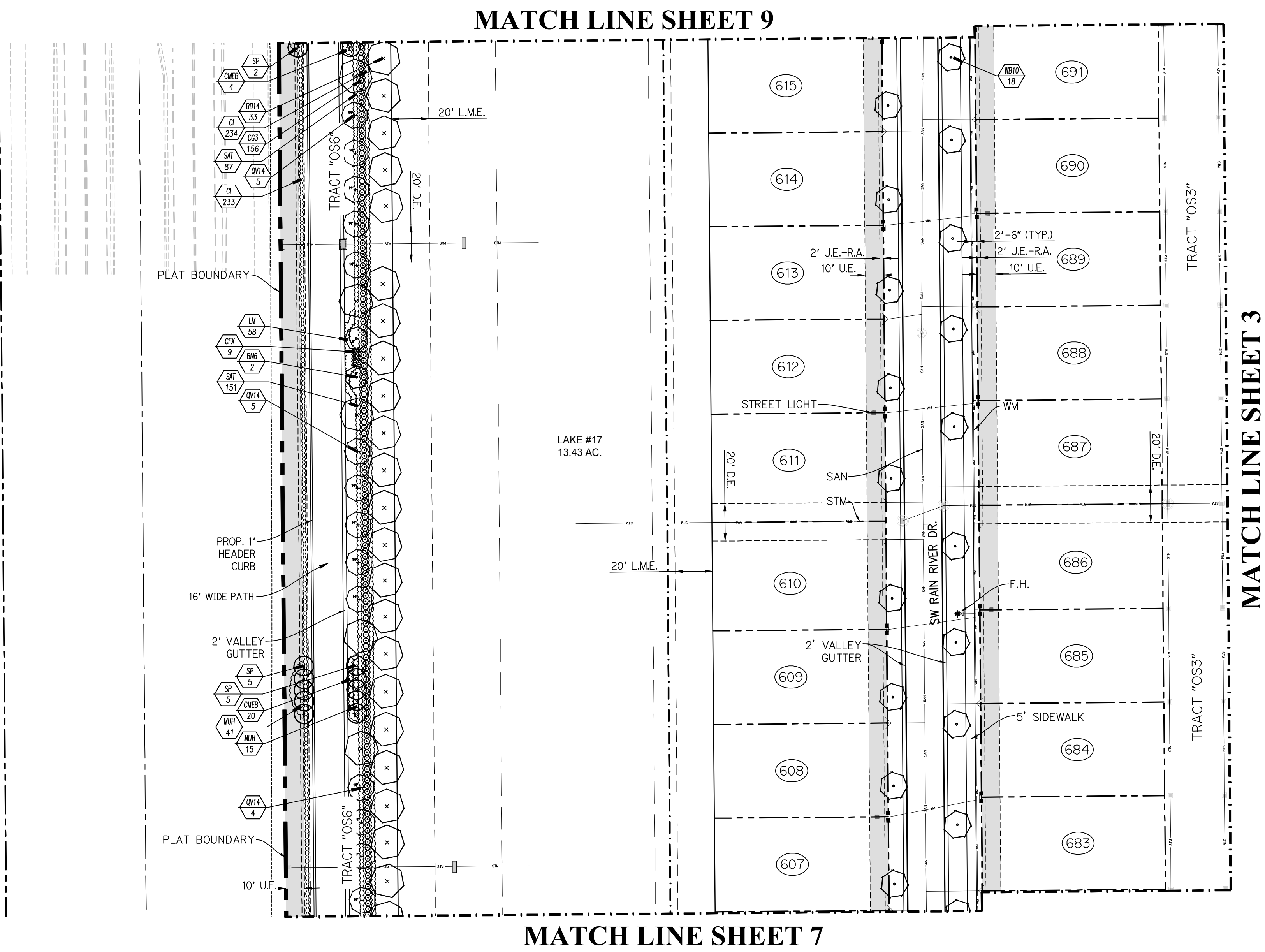
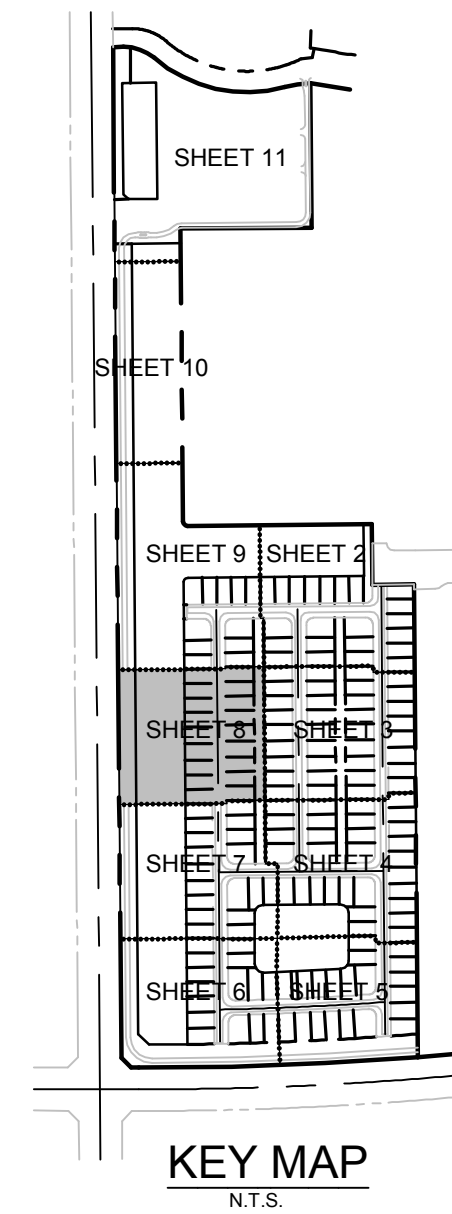
PSL PROJECT NO. P21-265



PARKER-YANNETTE  
design group, inc.

LANDSCAPE ARCHITECTURE  
PLANNING • GRAPHICS  
4425 Military Trail, Suite 202  
Jupiter, Florida 33458

Telephone: (561) 747-5069  
Fax: (561) 747-2041  
Email: mail@pydg.com  
License #LC-0001347



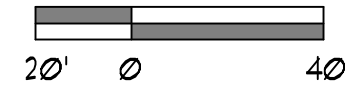
MATCH LINE SHEET 7

Plant List (Sheet P7-8 Only)

SYM	QTY	NAME	SPECIFICATIONS
<b>TREES</b>			
BB14	33	Bucida buceras 'Shady Lady'	14' x 17', 3" cal, straight trunk, full canopy
* QV14	14	Quercus virginiana / Live Oak	14' x 17', 3" cal, straight trunk, full canopy
<b>PALMS</b>			
EN6	2	Bismarckia nobilis 'Silver' / Silver Bismarck Palm	6' c.t., heavy cal, full frond
* SP	12	Sabal palmetto / Cabbage Palm	10' - 22' c.t. hts, staggered hts, hurricane cut, straight trunk, slick
WB10	18	Wodyetia bifurcata / Foxtail Palm	10' c.t., straight trunk, full head, unscarred trunk, intact fronds
<b>SHRUBS, ACCENTS, AND GROUNDCOVER</b>			
CFX	9	Cordyline fruticosa 'Xerox'	3 gal, 22" x 20", full
CG3	156	Clusia guttifera / Small Leaf Clusia	1 gal, 3" x 2", full to base
CI	467	Chrysobalanus icaco / Cocoplum	3 gal, 20" x 20", full to base
CMEB	24	Carissa macrocarpa 'Emerald Blanket' / Dwarf Carissa	3 gal, 14" x 14", full, dense foliage to base, 24" o.c.
LM	58	Liriope muscari 'Super Blue'	1 gal, 12" x 14", full, 18" o.c.
* MUH	56	Muhlenbergia capillaris / Muhly Grass	3 gal, 22" x 18", full, purple flower, 30" o.c.
SAT	238	Schefflera arboricola 'Trinette' / Variegated Dwarf Schefflera	3 gal, 22" x 20", full

NOTE:  
ALL PLANT MATERIAL SHALL MEET OR EXCEED SIZE AND CONTAINER SPECIFICATIONS IN PLANT LIST. PLANT MATERIALS NOT MEETING SPECIFICATIONS WILL BE REJECTED. CONTRACTOR TO COORDINATE AVAILABILITY ISSUES WITH OWNER PRIOR TO COMMENCING WORK.

\* DENOTES NATIVE SPECIES



PSL PROJECT NO. P21-265

**RIVERLAND - PARCEL 'B'**  
Developer: Riverland Associates II, LLLP  
PORT ST. LUCIE, FLORIDA  
PLAT SEVEN STREET TREE PLAN

DATE: 11.3.21  
DRAWN BY: AJO  
JOB NO.: 21-081  
SCALE: 1" = 40'-0"  
FILENAME: Rvr Parcel B

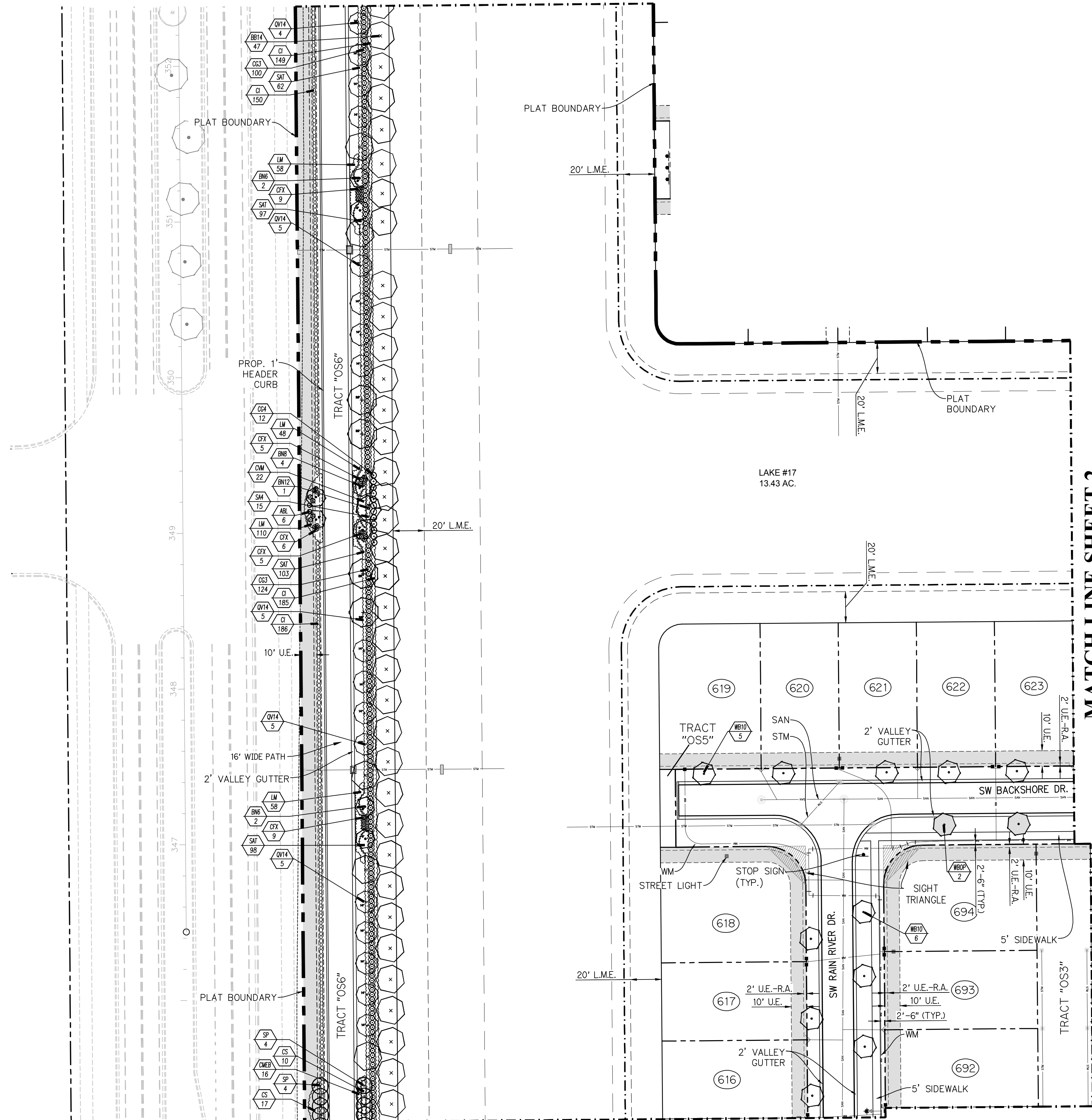
REVISIONS:  
12/02/21  
12/21/21 Revv drng esmts

PLAT SEVEN  
STREET TREE  
PLAN

SHEET:  
**P7-8**



MATCH LINE SHEET 10



MATCH LINE SHEET 8

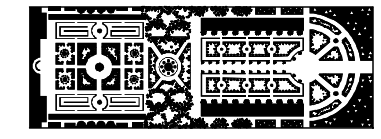
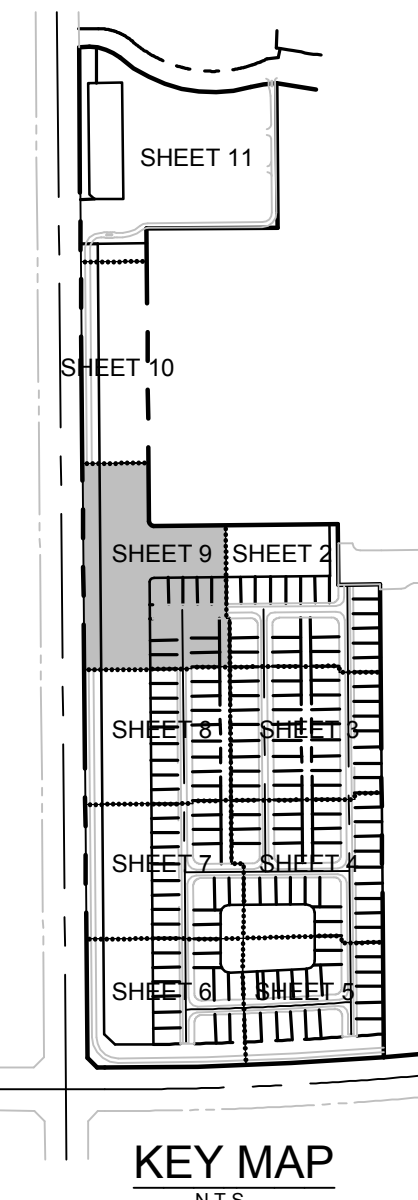
MATCH LINE SHEET 2

Plant List (Sheet P7-9 Only)

SYM	QTY	NAME	SPECIFICATIONS
<b>TREES</b>			
BB14	41	Bucida buceras 'Shady Lady'	14' x 7', 3' cal., straight trunk, full canopy
* QV14	24	Quercus virginiana / Live Oak	14' x 7', 3' cal., straight trunk, full canopy
<b>PALMS</b>			
BN6	4	Bismarckia nobilis 'Silver' / Silver Bismarck Palm	6' c.t., heavy cal., full frond
BN8	4	Bismarckia nobilis 'Silver' / Silver Bismarck Palm	8' c.t., heavy cal., full frond
BN12	1	Bismarckia nobilis 'Silver' / Silver Bismarck Palm	12' c.t., heavy cal., full frond
* SP	8	Sabal palmetto / Cabbage Palm	10' - 22' c.t. hts., staggered hts., hurricane cut, straight trunk, slick
WB10	11	Wodyetia bifurcata / Foxtail Palm	10' c.t., straight trunk, full head, unscarred trunk, intact fronds
WBOP	2	Optional Additional Street Tree - Wodyetia bifurcata / Foxtail Palm	10' c.t., straight trunk, full head, unscarred trunk, intact fronds
<b>SHRUBS, ACCENTS, AND GROUNDCOVER</b>			
ABL	6	Bromelia / Aechmea blanchetiana 'Lemon'	15 gal., 32" o.a., no damage to leaves, sun grown
CFX	34	Cordyline fruticosa 'Xerox'	3 gal., 22" x 20", full
CG3	224	Clusia guttifera / Small Leaf Clusia	1 gal., 3" x 2", full to base
CG4	12	Clusia guttifera / Small Leaf Clusia	1 gal., 4" x 3", full to base, dense
CI	610	Chrysobalanus icaco / Cocoplum	3 gal., 20" x 20", full to base
CMEB	16	Carissa macrocarpa 'Emerald Blanket' / Dwarf Carissa	3 gal., 14" x 14", full, dense foliage to base, 24" o.c.
CS	21	Cortaderia selloana / Pampas Grass	3 gal., 20" x 14", full
CVM	22	Codiaeum variegatum 'Mammy'	3 gal., 20" x 10", full
LM	58	Liriope muscari 'Super Blue'	1 gal., 12" x 14", full, 18" o.c.
SA4	15	Schefflera arboricola / Dwarf Schefflera	10 gal., 4' x 3', full
SAT	360	Schefflera arboricola 'Trinette' / Variegated Dwarf Schefflera	3 gal., 22" x 20", full

NOTE:  
ALL PLANT MATERIAL SHALL MEET OR EXCEED SIZE AND CONTAINER SPECIFICATIONS IN PLANT LIST. PLANT MATERIALS NOT MEETING SPECIFICATIONS WILL BE REJECTED. CONTRACTOR TO COORDINATE AVAILABILITY ISSUES WITH OWNER PRIOR TO COMMENCING WORK.

\* DENOTES NATIVE SPECIES



PARKER-YANNETTE  
design group, inc.

LANDSCAPE ARCHITECTURE  
PLANNING • GRAPHICS  
4425 Military Trail, Suite 202  
Jupiter, Florida 33458

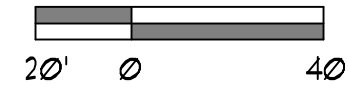
Telephone: (561) 747-5069  
Fax: (561) 747-2041  
Email: mail@pydg.com

License #LC-0001347

**RIVERLAND - PARCEL 'B'**  
Developer: Riverland Associates II, LLLP  
PORT ST. LUCIE, FLORIDA  
**PLAT SEVEN STREET TREE PLAN**

DATE: 11.3.21  
DRAWN BY: AJO  
JOB NO.: 21-081  
SCALE: 1" = 40'-0"  
FILENAME: Rvr Parcel B

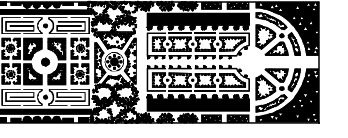
REVISIONS:  
12.10.21  
12.21.21 Revv drng esmts



PSL PROJECT NO. P21-265

PLAT SEVEN  
STREET TREE  
PLAN

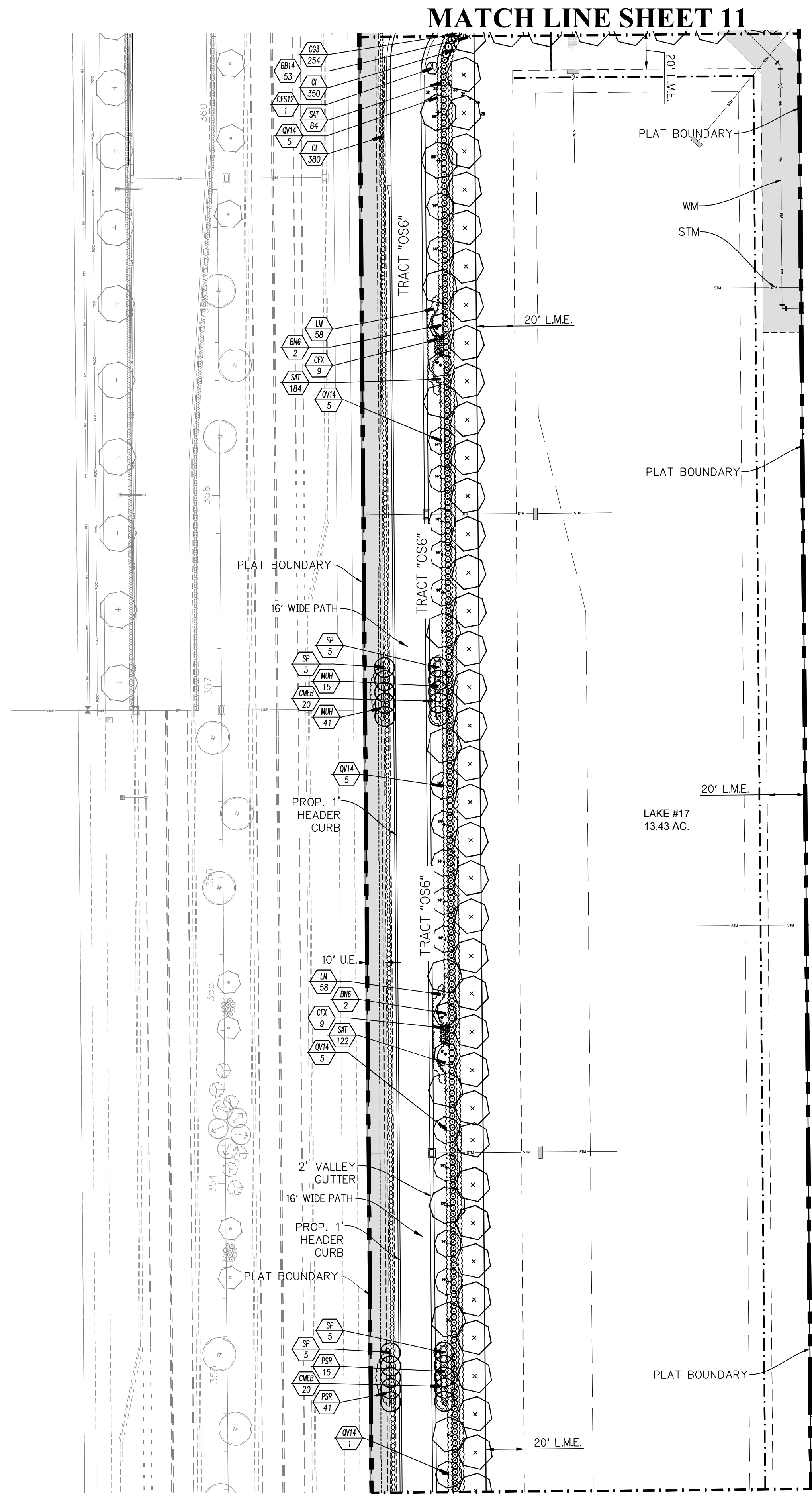
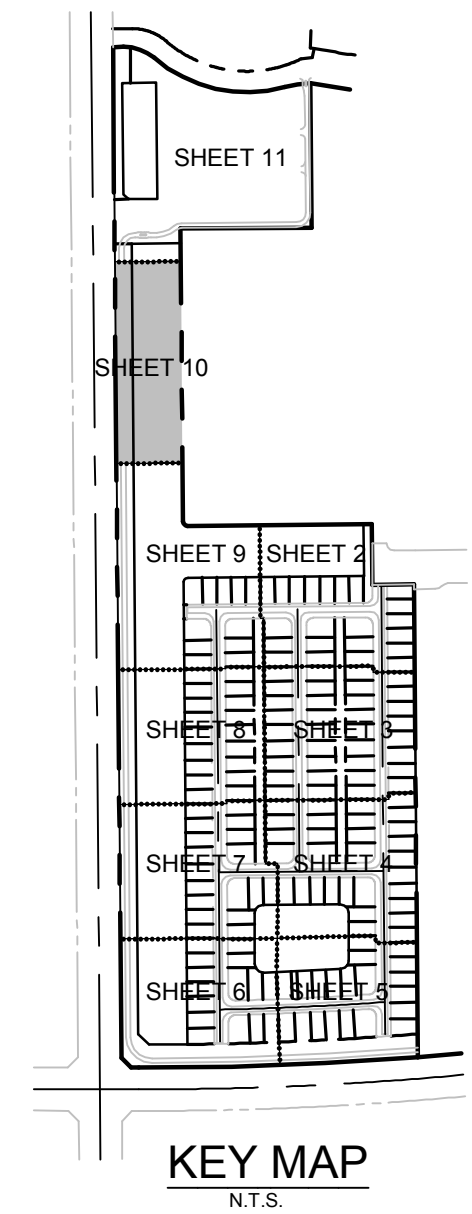
SHEET:  
**P7-9**



PARKER-YANNETTE  
design group, inc.

LANDSCAPE ARCHITECTURE  
PLANNING • GRAPHICS  
4425 Military Trail, Suite 202  
Jupiter, Florida 33458

Telephone: (561) 747-5069  
Fax: (561) 747-2041  
Email: mail@pydg.com  
License #LC-0001347

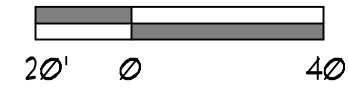


MATCH LINE SHEET 9

Plant List (Sheet P7-10 Only)

SYM	QTY	NAME	SPECIFICATIONS
<b>TREES</b>			
BB14	53	Bucida buceras 'Shady Lady'	14' x 1", 3" cal., straight trunk, full canopy
* CES12	1	Conocarpus erectus sericeus / Silver Buttonwood	12' ht. x 1' apr., 6" c.t., 3" cal., full canopy
* QV14	21	Quercus virginiana / Live Oak	14' x 1", 3" cal., straight trunk, full canopy
<b>PALMS</b>			
EN6	4	Bismarckia nobilis 'Silver' / Silver Bismarck Palm	6' c.t., heavy cal., full frond
* SP	20	Sabal palmetto / Cabbage Palm	10' - 22' c.t. hts., staggered hts., hurricane cut, straight trunk, slick
<b>SHRUBS, ACCENTS, AND GROUNDCOVER</b>			
CMEB	40	Carissa macrocarpa 'Emerald Blanket' / Dwarf Carissa	3 gal., 14" x 14", full, dense foliage to base, 24" o.c.
CFX	18	Cordyline fruticosa 'Xerox'	3 gal., 22" x 20", full
CG3	254	Clusia guttifera / Small Leaf Clusia	1 gal., 3" x 2", full to base
CI	730	Chrysobalanus icaco / Cocoplum	3 gal., 20" x 20", full to base
LM	116	Liriope muscari 'Super Blue'	1 gal., 12" x 14", full, 18" o.c.
* MUH	56	Muhlenbergia capillaris / Muhly Grass	3 gal., 22" x 18", full, purple flower, 30" o.c.
F6R	56	Fernisetum setaceum 'Rubrum' / Red Fountain Grass	3 gal., 22" x 18", full, 24" o.c.
SAT	390	Schefflera arboricola 'Trinette' / Variegated Dwarf Schefflera	3 gal., 22" x 20", full

NOTE:  
ALL PLANT MATERIAL SHALL MEET OR EXCEED SIZE AND CONTAINER SPECIFICATIONS IN PLANT LIST. PLANT MATERIALS NOT MEETING SPECIFICATIONS WILL BE REJECTED. CONTRACTOR TO COORDINATE AVAILABILITY ISSUES WITH OWNER PRIOR TO COMMENCING WORK.  
\* DENOTES NATIVE SPECIES



P&L PROJECT NO. P21-265

RIVERLAND - PARCEL 'B'  
Developer: Riverland Associates II, LLLP  
PORT ST. LUCIE, FLORIDA  
PLAT SEVEN STREET TREE PLAN

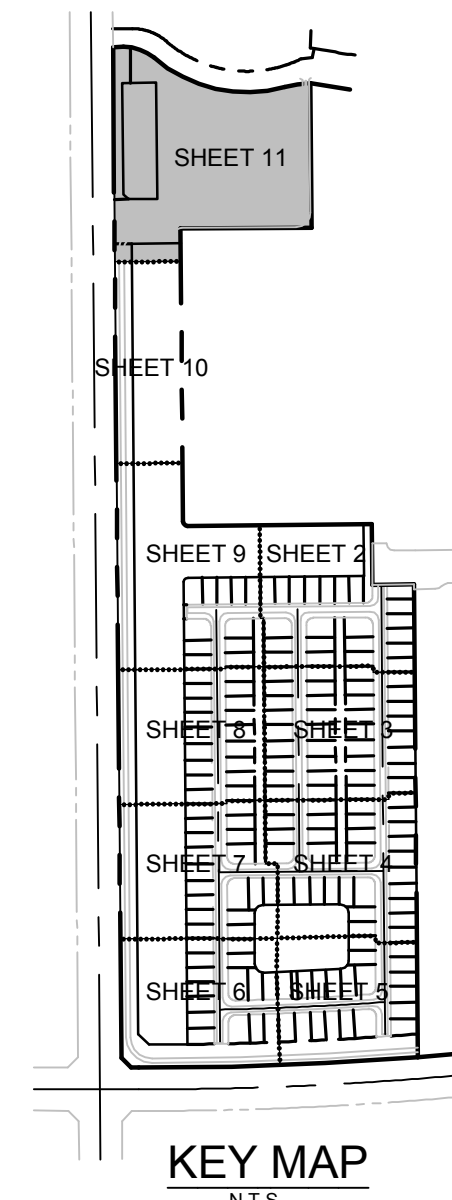
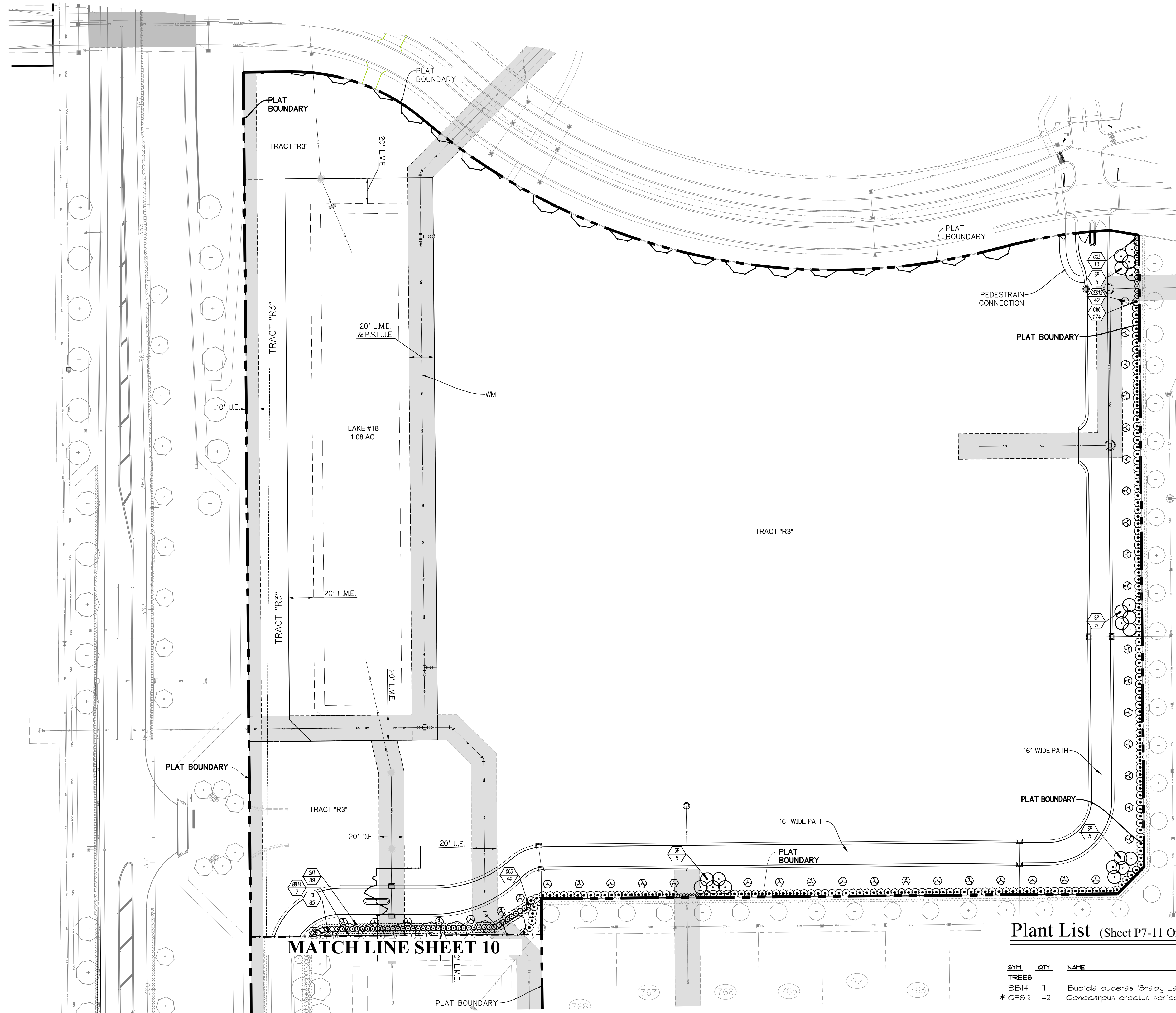
DATE: 11.3.21  
DRAWN BY: AJO  
JOB NO.: 21-081  
SCALE: 1" = 40'-0"  
FILENAME: Rvr Parcel B

REVISIONS:  
12/02/21  
12/21/21 Revv drng esmts

PLAT SEVEN  
STREET TREE  
PLAN

SHEET:  
P7-10

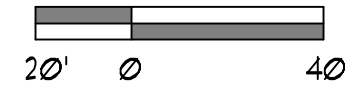




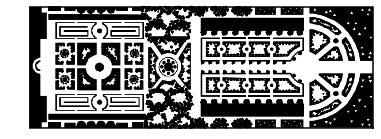
**Plant List (Sheet P7-11 Only)**

SYM	QTY	NAME	SPECIFICATIONS
<b>TREES</b>			
BB14	1	Bucida buceras 'Shady Lady'	14' x 7', 3" cal., straight trunk, full canopy
* CE912	42	Conocarpus erectus sericeus / Silver Buttonwood	12' ht. x 1' spr., 6" c.t., 3" cal., full canopy
<b>PALMS</b>			
CM6	174	Caryota mitis / Fishtail Palm	6' o.a., full to base, dense
* SP	20	Sabal palmetto / Cabbage Palm	10' - 22' c.t. hts., staggered hts., hurricane cut, straight trunk, slick
<b>SHRUBS, ACCENTS, AND GROUNDCOVER</b>			
CG3	57	Clusia guttifera / Small Leaf Clusia	1 gal., 3' x 2', full to base
CI	85	Chrysobalanus icaco / Cocoplum	3 gal., 20" x 20", full to base
SAT	89	Schefflera arboricola 'Trinetta' / Variegated Dwarf Schefflera	3 gal., 22" x 20", full

**NOTE:**  
 ALL PLANT MATERIAL SHALL MEET OR EXCEED SIZE AND CONTAINER SPECIFICATIONS IN PLANT LIST. PLANT MATERIALS NOT MEETING SPECIFICATIONS WILL BE REJECTED. CONTRACTOR TO COORDINATE AVAILABILITY ISSUES WITH OWNER PRIOR TO COMMENCING WORK.  
 \* DENOTES NATIVE SPECIES



P&L PROJECT NO. P21-265



**PARKER-YANNETTE**  
 design group, inc.

LANDSCAPE ARCHITECTURE  
 PLANNING • GRAPHICS  
 4425 Military Trail, Suite 202  
 Jupiter, Florida 33458

Telephone: (561) 747-5069  
 Fax: (561) 747-2041  
 Email: mail@pydg.com  
 License #LC-0001347

**RIVERLAND - PARCEL 'B'**  
 Developer: Riverland Associates II, LLLP  
 PORT ST. LUCIE, FLORIDA  
**PLAT SEVEN STREET TREE PLAN**

DATE: 11.3.21  
 DRAWN BY: AJO  
 JOB NO.: 21-081  
 SCALE: 1" = 40'-0"  
 FILENAME: Rvr Parcel B

**REVISIONS:**  
 12/02/21  
 12/21/21 Revv drng e smts

**PLAT SEVEN  
 STREET TREE  
 PLAN**

SHEET:  
**P7-11**