



**NOTICE OF PUBLIC HEARING
NEW RESIDENTIAL STREET LIGHTING
ASSESSMENT AREAS FOR FISCAL YEAR 2020/2021
CITY COUNCIL MEETING JUNE 28, 2021, AT 6:30 P.M.
CITY HALL, 121 SW PORT ST. LUCIE BOULEVARD, PORT ST. LUCIE, FLORIDA**

THE LOTS LISTED BELOW ARE IN AREAS BALLOTTED AND PASSED BY MAJORITY OF THE PROPERTY OWNERS RETURNED BALLOTS. THE CITY CONTEMPLATES LEVYING AN ASSESSMENT ESTIMATED AT \$26.00 PER LOT. PAYMENT WILL BE ON A YEARLY BASIS AND COLLECTED BY THE ST. LUCIE COUNTY TAX COLLECTOR. THIS ASSESSMENT WILL BE INCLUDED IN YOUR NOVEMBER 2022 TAX BILL ON THE NON-AD VALOREM PORTION OF YOUR TAX BILL. A DESCRIPTION OF THE PROPERTIES SPECIALLY BENEFITED (BY SECTION, BLOCK AND LOT) AND A MAP SHOWING THE LOCATION OF THE STREET LIGHTING IS AS FOLLOWS:

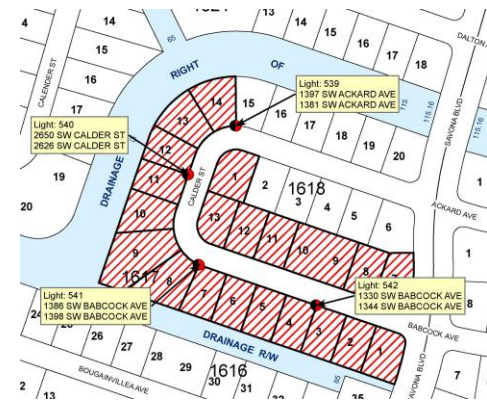
**STREET LIGHTING ASSESSMENT AREA BOUNDARY #587
NW CORY AVENUE - SECTION 25**

BLOCK 30	LOT	1
AND	LOTS	41 AND 42
BLOCK 67	LOT	13
BLOCK 68	LOT	14



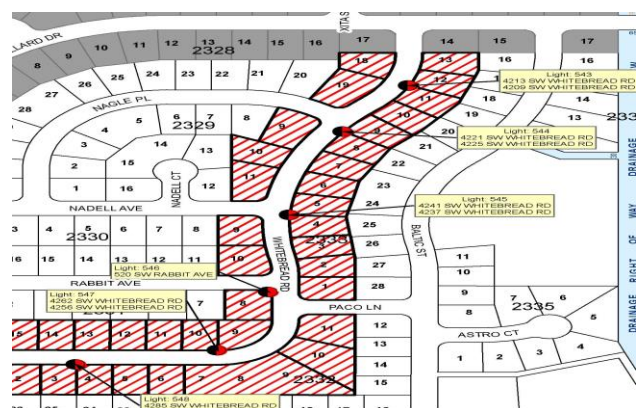
**STREET LIGHTING ASSESSMENT AREA BOUNDARY #589
SW CALDER STREET – SECTION 23**

BLOCK 1617	LOTS	1 THRU 14
BLOCK 1618	LOTS	7 THRU 13
AND	LOT	1



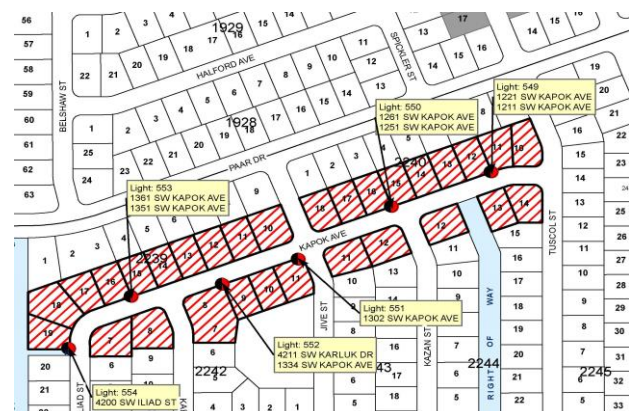
**STREET LIGHTING ASSESSMENT AREA BOUNDARY #591
SW WHITEBREAD ROAD – SECTION 34**

BLOCK 2328	LOTS	18 THRU 19
BLOCK 2329	LOTS	9 THRU 11
BLOCK 2330	LOTS	9 THRU 10
BLOCK 2331	LOTS	8 THRU 15
BLOCK 2332	LOTS	2 THRU 11
BLOCK 2333	LOTS	1 THRU 13



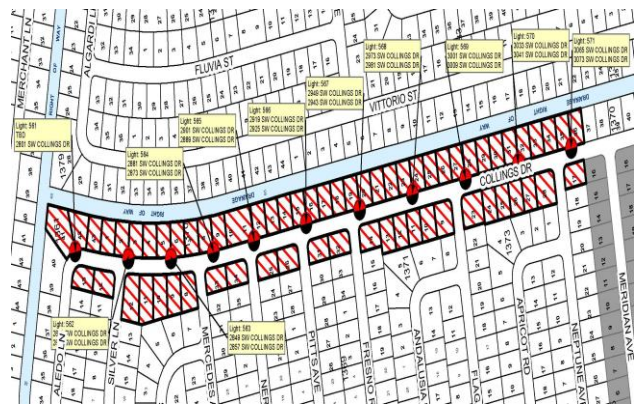
**STREET LIGHTING ASSESSMENT AREA BOUNDARY #593
SW KAPOK AVENUE- SECTION 33**

BLOCK 2239	LOTS	10 THRU 19
BLOCK 2240	LOTS	10 THRU 18
BLOCK 2241	LOTS	7 THRU 8
BLOCK 2242	LOTS	7 THRU 11
BLOCK 2243	LOTS	11 THRU 12
BLOCK 2244	LOTS	12 THRU 14



STREET LIGHTING ASSESSMENT AREA BOUNDARY #595
SW COLLINGS DRIVE – SECTION 14

BLOCK 1361	LOTS	12 THRU 13
AND	LOTS	41 THRU 43
BLOCK 1365	LOTS	8 THRU 12
BLOCK 1366	LOTS	33 THRU 34
BLOCK 1368	LOTS	25 THRU 26
BLOCK 1369	LOTS	31 THRU 32
BLOCK 1370	LOTS	1 THRU 36
BLOCK 1371	LOTS	9 THRU 14
BLOCK 1373	LOTS	23 THRU 28
BLOCK 1375	LOT	1



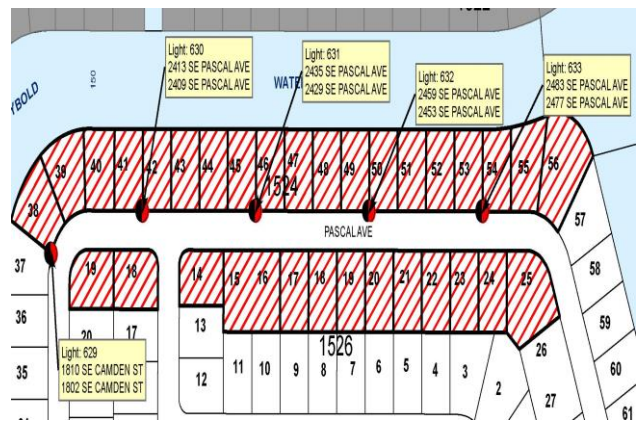
STREET LIGHTING ASSESSMENT AREA BOUNDARY #596
SW KESTOR DRIVE – SECTION 34

BLOCK 2415	LOT	17
BLOCK 2424	LOTS	1
AND		15 THRU 16
BLOCK 2425	LOTS	9 THRU 11
BLOCK 2426	LOTS	12 THRU 22
BLOCK 2427	LOTS	6 THRU 14
BLOCK 2429	LOT	8
BLOCK 2430	LOT	34
BLOCK 2435	LOTS	2 THRU 8
BLOCK 2436	LOTS	10 THRU 15



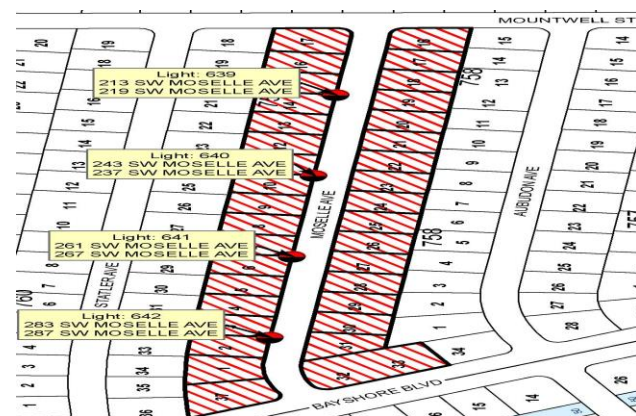
STREET LIGHTING ASSESSMENT AREA BOUNDARY #603
SE PASCAL AVE – SECTION 30

BLOCK 1524	LOTS	38 THRU 56
BLOCK 1525	LOTS	18 THRU 19
BLOCK 1526	LOTS	14 THRU 25



STREET LIGHTING ASSESSMENT AREA BOUNDARY #606
SW MOSELLE AVE – SECTION 18

BLOCK 758	LOTS	16 THRU 33
BLOCK 759	LOTS	1 THRU 17
AND	LOT	37



The public hearing will be held in the City Council Chambers at 6:30 p.m. on June 28, 2021, or as soon thereafter as the matter may be heard, located at the City of Port St. Lucie Municipal Complex (City Hall), 121 S.W. Port St. Lucie Blvd., Port St. Lucie, Florida 34984 for receiving public comment on the proposed collection of the assessments. All affected property owners have a right to appear at the hearing and may file written objections with the Council in care of the City Clerk prior to the meeting. Written objections may also be filed with the City Clerk at the hearing any time before the adjournment of the hearing. If a person decides to appeal any decision made by the Council with respect to any matter considered at the hearing, such person will need a record of the proceedings and may need to arrange for a court reporter to ensure that a verbatim record is made. In accordance with the Americans with Disabilities Act, persons needing special accommodations or an interpreter to participate in this proceeding should contact the City Clerk's office at 772-871-5157, at least seven days prior to the date of the hearing. Copies of the assessment roll, showing the amount of the assessment to be imposed against each parcel of property, and the legal documentation relating to the assessment will be available for inspection in 2022 when the assessment roll is prepared. They can be reviewed in the office of the City Clerk, located on the Third Floor of City Hall, 121 S.W. Port St. Lucie Blvd., Port St. Lucie, Florida. The assessments will be collected on the non-ad valorem portion of the tax bill to be mailed in November 2022 by the St. Lucie County Tax Collector. Failure to pay the assessment will cause a tax certificate to be issued against the property, which may result in a loss of title to your property. If you have any questions, please contact City of Port St. Lucie City Attorney's Office at 772-871-5294, Monday through Friday between 8:00 a.m. and 5:00 p.m.

Due to Covid-19, the City of Port St. Lucie is adhering to Centers of Disease Control's (CDC) recommendations. If you would like to provide public comment please visit www.cityofpsl.com/tv for new public comment options as a result of Covid-19. Individuals may be subject to medical screening prior to entering any City building and entry may be denied if any indicator of illness or prior exposure is identified.

Sally Walsh, City Clerk
Publish: June 14, 2021