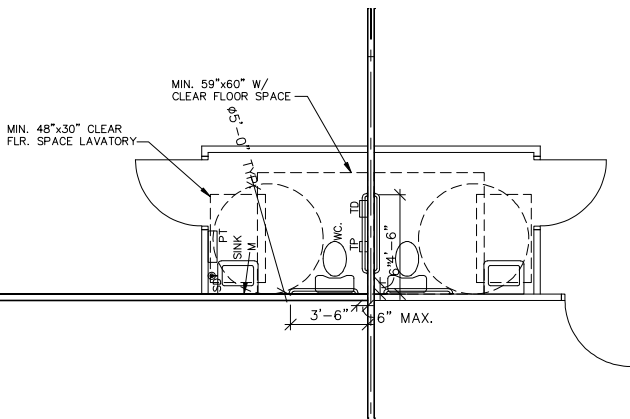
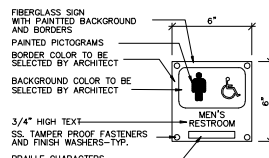


FLOOR PLAN
 3/32'-1'-0"

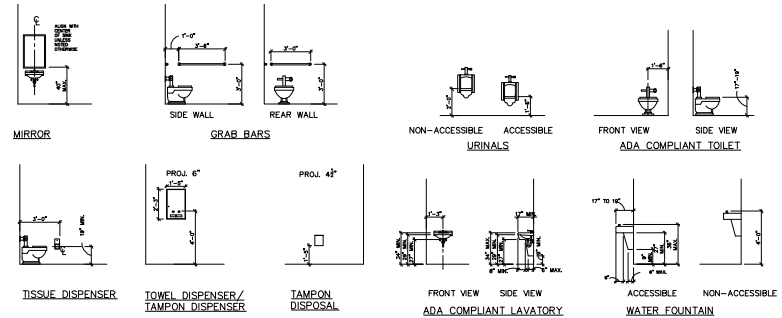


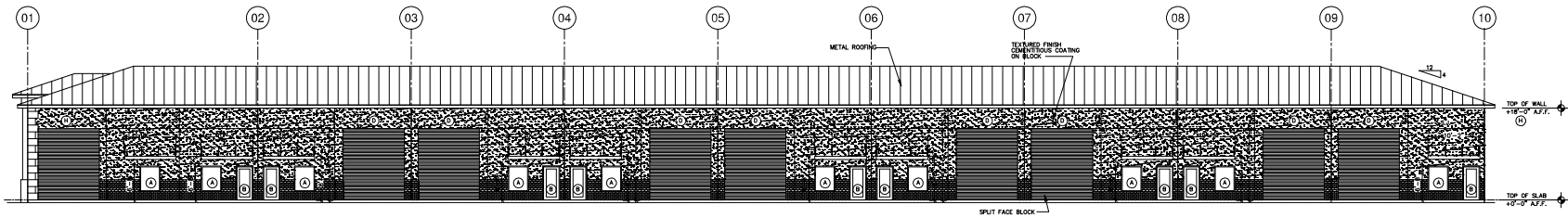
TOILET ROOM PLANS
 3/8'-1'-0"

TOILET ACCESSORIES LEGEND	
MARK	DESCRIPTION
SD	SOAP DISPENSER
TP	TOILET PAPER DISPENSER
PT	PAPER TOWEL DISPENSER / DISPOSAL
TD	TAMPON DISPOSAL
TDS	TAMPON DISPENSER
M	MIRROR

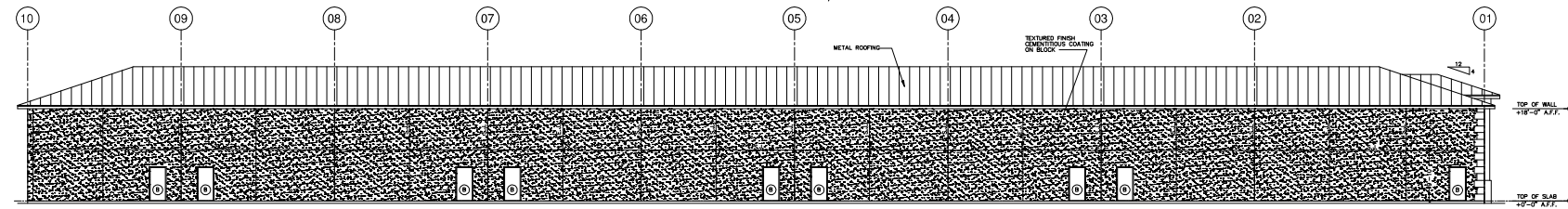


NOTE: PROVIDE TOILET ROOM SIGNS AT ALL RESTROOMS. PROVIDE ONE FOR EACH SEX AT EACH DOOR - TYP.

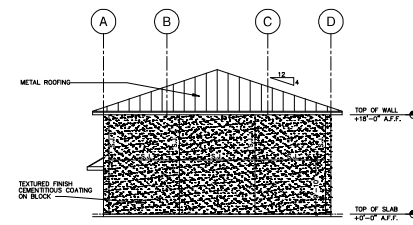




RIGHT ELEVATION
3/12'-1'-0"

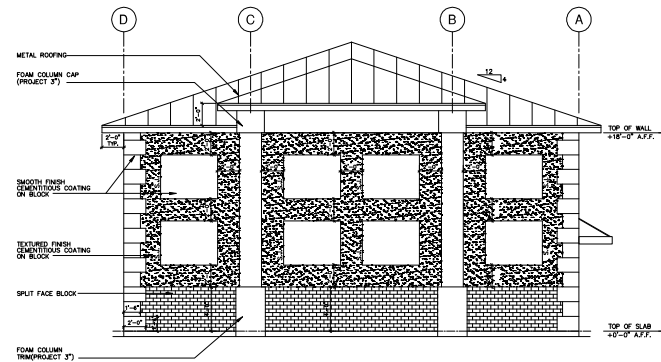


LEFT ELEVATION
3/12'-1'-0"



REAR ELEVATION
3/12'-1'-0"

S.J. = SCORED JOINT
E.J. = EXPANSION JOINT



FRONT ELEVATION
3/12'-1'-0"

City of Port Saint Lucie Building Department Product Approval Submittal Affidavit						
Permit #	Building Address	2095 N. Commerce Lakes Dr., Port St. Lucie, Florida		Contractor: AJ Bella Contractors		
FL # or Miami-Code	Product	Model #	Manufacturer	Class Description	Attachment Method Type, Size, Spacing & Embedment NOTE: FILL ALL MANUFACTURER'S PRE-DRILLED HOLES	Building Design Pressure Product Design Pressure
FL20470.12	EXTERIOR SWING DOOR	FIBER-CLASSIC SMOOTH START	THERMA-TRU	IMPACT	HEAD: 1/4" X 3/4" TAPCONS SPACED 3" FROM CORNERS, 3" & 6" FROM MULLION. JAMBS: 1/4" X 3/4" TAPCONS SPACED 3" FROM CORNERS, 14" O.C. MAX. SILL: 1/4" DIA. X 2-1/4" TAPCONS SPACED 3" FROM CORNERS, 3" & 6" FROM MULLION.	27.5 PSF / -30.0 PSF +40.0 -40.0 PSF
FL14237.1	EXTERIOR SWING DOOR	EXTERIOR HOLLOW METAL DOORS	FLEMING-BARON	<< >>	HEAD: 1/4" X 3/4" TAPCONS SPACED 3" FROM CORNERS, 3" & 6" FROM MULLION. JAMBS: 1/4" X 3/4" TAPCONS SPACED 3" FROM CORNERS, 14" O.C. MAX. SILL: 1/4" DIA. X 2-1/4" TAPCONS SPACED 3" FROM CORNERS, 3" & 6" FROM MULLION.	27.5 PSF / -30.0 PSF +40.0 -40.0 PSF
FL12111.2	ROLLING OVERHEAD DOOR	790 SERIES	OVERHEAD DOOR CORP.	<< >>	STEEL GUIDE TO CONC.; 3/8" X 4" CONCRETE SCREW SPACED 12" O.C., BARREL ASSEMBLY MOUNTING BRACKET TO CONC.; (3) 3/8" CONC. SCREWS W/ 1-1/2" MIN. EMBEDMENT	23.5 PSF / -25.6 PSF +27.5 / -31.6 PSF
FL17387.1	FIXED WINDOW	SERIES P4H-150 VINYL	CUSTOM WINDOW SYSTEMS, INC.	IMPACT GLASS	HEAD AND JAMBS: 1/4" DIA. TAPCONS (MIN. 1-3/4" EMBEDMENT) MIN. 2-1/2" EDGE DISTANCE; 2" MAX. FROM CORNERS; MAX. SPACING PER MANUFACTURER'S RECOMMENDATIONS	27.5 PSF / -30.0 PSF +55.0 PSF
FL17022.5	METAL ROOFING	26 GA. COR-MAX	EXTREME METAL FABRICATORS, LLC	<< >>	26 GA. X 16" ROOF PANEL #10 X 1" (MINIMUM) PER TABLE "A" PANCAKE HEAD WOOD SCREW 6" ON CENTER	PER TABLE R301.2(2)

WINDOW PRESSURE CHART 160 MPH			
TAG	PRESSURES	ZONE	SqFt
(A)	+27.6 / -30.0	4	10
(B)	+26.4 / -28.7	4	20
(C)	+24.7 / -27.1	4	50
(D)	+23.5 / -25.8	4	100
(E)	+27.6 / -37.0	5	10
(F)	+26.4 / -34.5	5	20
(G)	+24.7 / -31.2	5	50
(H)	+23.5 / -28.7	5	100

V. Architectural Elements:
These elements are intended to promote aesthetically pleasing Architectural Style. The applicant shall illustrate selected elements or features on the required elevation drawings.

- (1) Masonry finish (brick, rectangular patterns)
- (2) Lightly stained / painted wood in a horizontal pattern.
- (3) Clay tile.
- (4) Click lower.
- (5) Fiberglass shingles.
- (6) Siding materials.
- (7) Paint with gloss rating.
- (8) Anodize / loggia.
- (9) Copper.
- (10) Dorrner.
- (11) Metal or green roof (15% minimum).
- (12) Green walls (covering western and eastern walls, each 25% minimum).
- (13) Wood's work.
- (14) Lattice detailing.
- (15) Ornamental open work or work in relief (fretwork).
- (16) Stone or pavers at project entry, drop-off or pedestrian crossing (330 s.f. minimum).
- (17) Paved area (courtyard or plaza (300 s.f. minimum)).
- (18) Loggia.
- (19) Porch / Porte cochere.
- (20) Sculpture or other public art.
- (21) Railed terraces over doors and windows.
- (22) Arches.
- (23) Display windows.
- (24) Wall tower.
- (25) Weather vane (residential only).
- (26) Frieze / medallion.

Roof Design:

- a. Sloped roofs.
- 1. Roof height shall not exceed the average height of the supporting walls.
- 2. The average slope shall be greater than or equal to (1) foot of vertical rise for every (3) feet of horizontal run. See Figure 2.
- 3. The average slope shall be less than or equal to (1) foot of vertical rise for every (1) foot of horizontal run.

Proposed buildings shall incorporate at least 2 of the following roof elements or features:

Eaves that overhang a minimum of 24" with a minimum fascia depth of 8".
An additional vertical change in roof height (minimum 24" change in elevation).

IX. Approved colors:

The industry standard for the Approved Color Chart is Sherwin-Williams. The paint color numbers listed on the Approved Color Chart are used as reference only and are not intended to limit paint selection to any one paint manufacturer. The applicant may use any manufacturer's paint, so long as the color matches the Approved Color Chart. Samples of building, trim and roof colors shall be submitted for review with the site plan application.

APPROVED COLOR CHART FOR BASE AND SECONDARY BUILDING COLORS

NEUTRALS	ICIDE
SW 6238	
SW 7005	Pearly White
SW 6506	Dairy Card
TRM ONLY	
SW 7006	Extra White

COLOR OPTIONS
SW 7005 Pearly White
SW 6506 Dairy Card
TRM ONLY
SW 7006 Extra White

ARCHITECT

Michael C. Anderson Architect
1020 SW Provincetown Lane
Port St. Lucie, Florida 34953

DATE	DESCRIPTION (USE COVER SHEET)

K&A WAREHOUSE 20 LLC

PROJECT# 2024.001
2095 NW COMMERCE LAKES DR., PORT ST. LUCIE, FL

PAGE: ELEVATIONS

ISSUED FOR REVIEW - 05/14/2024

ARCHITECT: STATE OF FLORIDA

MICHAEL C. ANDERSON
A110 7395

PRINT DATE: 05/14/2024
SCALE: VARIES
SHEET A.3.0