

Club Car Connectivity Proposal

The Saints Golf Course

Port St. Lucie, FL



THE SAINTS
GOLF COURSE

August 21st, 2023
Presented by: Chris Mills

GAME FOR MORE...

possibilities

Our love of golf runs deep.





ViSAGE

the next generation
of connectivity **is here**

Visage's latest software release includes user defined dashboards to give course operators a top-level view of critical performance metrics from any web or mobile device. The intuitive design and user interface reduces the learning curve for new users to increase operational efficiency. New Visage reporting gives you real-time insights for every car in your fleet, so you can address service issues before they become emergencies, reducing downtime and repair costs.

READY TO TAKE YOUR COURSE TO THE NEXT LEVEL AND PROVIDE YOUR GOLFERS WITH A WORLD-CLASS GOLF EXPERIENCE?

Contact your Club Car Representative today!

Club Car



ViSAGE

fleet management

Get real-time data on each vehicle in your fleet with these car modules

car tracking

ENHANCED software allowing you to track your fleet from web or mobile device

IMPROVED REPORTING features to review progress changes and improve overall pace of play

COMMUNICATE directly with guests with instant messaging, whether it is an alert for dangerous weather or to report a lost club

car control

REDESIGNED PLATFORM allowing you to easily control any vehicle, from any computer, tablet or mobile device, whether you're on the course or on the road

BETTER PROTECTION for your golfers and your fleet with speed control, allowing you to set speed limits in certain areas, as well as no go zones keeping golfers out of hazard areas, with the ability to adjust as needed

INCREASED FLEXIBILITY to turn cart path only rules on or off, either for the entire course or for certain holes

elevate the golfer experience



NEW 10" LCD DISPLAY AND ENHANCED COURSE GRAPHICS

with a built for purpose touchscreen delivering tablet-like response and full screen 3D resolution providing richer details and course elevation perspective



IMPROVED GPS YARDAGE AND DETAILED GREENS MAPS

with linear and slope adjusted distances to pins, hazards, and points of interest for improved player scoring




INTEGRATED BLUETOOTH SPEAKERS

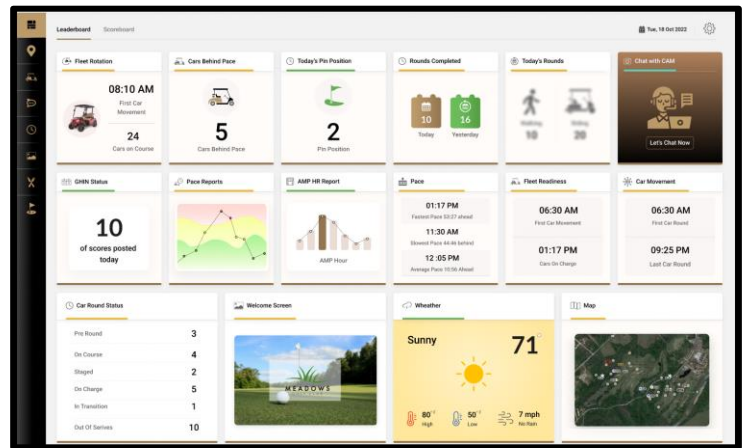
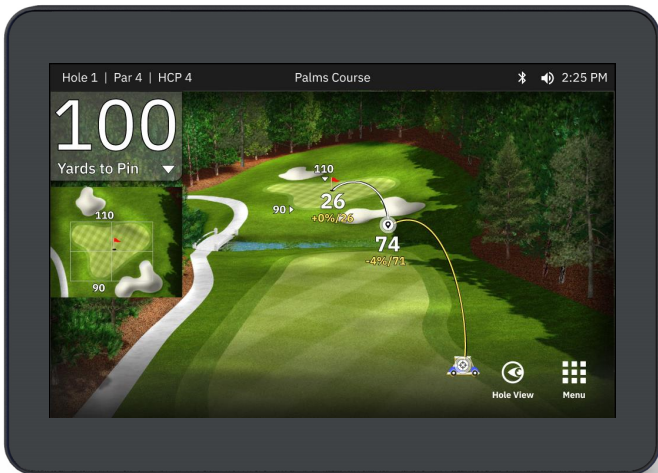
with intuitive smartphone pairing, an embedded media player and improved speaker performance to engage golfers on a whole new level



Connectivity Leadership

1. Unsurpassed Fleet Management knowledge and experience
 - 15+ years experience across 1,500+ course installed base
2. Dedicated Customer Account Managers (CAMs)
 - Best-in-class (24x7) customer support
3. Continuous investment in the end-to-end solution
 - Partner to the industry and associations that support you

Official Golf Car of the PGA of America 



- Built for purpose touch-screen
- Best-in-Class Golf GPS and course graphics
- Linear & slope adjusted yardages
- Integrated mounting console
- Optional Bluetooth speakers
- Tee shot distances
- F&B ordering
- Blind Tee shot

- Advanced software platform to easily control any vehicle, from any computer, tablet or mobile device
- Customized management dashboards
- Superior Fleet Management tools / reporting
- Real-time insights on Fleet performance
- Variable Speed Car Control
- Pace of Play tracking and reporting



Visage



CONNECTIVITY LINE-UP

Choose the technology package that is tailored to meet your club's needs. Connectivity agreements for Visage or Visage with Bluetooth can be included in the financing of your fleet golf car lease or contracted as a stand-alone rental agreement. Contact your Club Car sales representative to learn more.



ViSAGE™

AVAILABLE FOR PURCHASE, LEASE* OR RENTAL**

- 10" LCD Touchscreen Monitor VDU
- Visage Fleet Management
 - Standard Connectivity with access to Visage Control Center (VCC)
 - Choice of Visage Module(s)
- Additional Visage Modules
 - Golfer Experience
 - Car Tracking
 - Car Control
- Integrated Mounting Console with Storage Baskets

*Lease includes one Visage Module; 2nd and 3rd modules contracted separately.

**Rental includes choice of two Visage modules; 3rd module contracted separately.



ViSAGE™

(WITH BLUETOOTH)

AVAILABLE FOR PURCHASE, LEASE* OR RENTAL**

- 10" LCD Touchscreen Monitor VDU
- Visage Fleet Management
 - Standard Connectivity with access to Visage Control Center (VCC)
 - Golfer Experience Module
- Additional Visage Modules
 - Car Tracking
 - Car Control
- Integrated Mounting Console with Bluetooth Speakers

*Lease includes Golfer Experience module. Bluetooth and additional Visage modules contracted separately.

**Rental includes Golfer Experience module and Bluetooth. Additional Visage modules contracted separately.



Fleet Management Modules

Golfer Experience	Car Tracking	Car Control
<ul style="list-style-type: none"> • Hole views w/ GPS Yardage • Approach views and detailed greens maps • Dynamic distances to pins and POIs • Touch screen for linear & scope adjusted yardages • Tee shot distance • Blind tee shot / car ahead • Pin placement manager • Food & Beverage ordering and reports • Max Holes 	<ul style="list-style-type: none"> • VCC course map displays real-time car locations • Fleet utilization / rotation • Vehicle drive history • Vehicle tracks (bread crumbs) • Pace of Play monitoring, reporting and notifications • Round reports • Find car (last known location) • Two-Way messaging • Message logs • Email & text notifications 	<p>Variable speed zones</p> <ul style="list-style-type: none"> • Action zone messaging • On-screen Action zone visibility for golfers • Fleet lock down • Geofence • Cart path only • Anti-tamper • Set vehicle top speed • Car Staging & Lockdown • Vehicle drive history

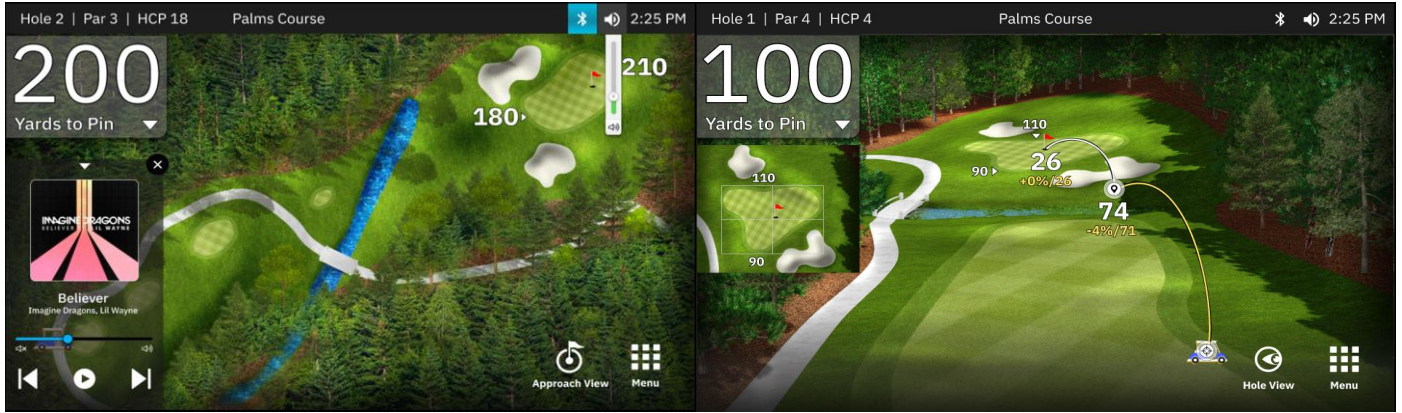
Standard Connectivity <i>VCC Access - \$10 pcpm value (included w/ Visage Lease or Rental)</i>		Add-Ons
<ul style="list-style-type: none"> • Static hole images • Battery level status • On charge status • Service notifications <ul style="list-style-type: none"> • Fault codes; charge failures • One-Way Messaging 	<ul style="list-style-type: none"> • Weather Alert • Car Odometer + Amp Hour Reporting • Custom welcome message • Player names • Electronic scorecard 	<ul style="list-style-type: none"> • Integrated mounting console with Bluetooth Speakers (\$8 pcpm) • Tournament Connect (\$4 pcpm) <ul style="list-style-type: none"> • Golf Genius • Vision Perfect (ViPer) • 3D Hole Flyovers (\$2 pcpm)

AdMan <i>(included w/ Std. Connectivity)</i>	AdMan Pro <i>(\$5 pcpm)</i>
<ul style="list-style-type: none"> • Access to 18 fairway spot ads (Insert, Full page and Video – No par 3's) • Pre-configure and schedule ad campaigns for Auto-Publish 	<ul style="list-style-type: none"> • Access to all inventory – tee, fairway, green, and green to tee • Video Ads + Action Zone Ads • Schedule multiple campaigns for Auto-Publish



Technology Rental Quotation

PROPOSAL



QTY	Vehicle	Term	Price Per Car Per Month	Total Monthly Payment
80	Connect Package New 10" Android Visage Display Unit W/Golfers Experience	TBD	Included in Golf Car	Included in Golf Car
80	Car Control Module	TBD	\$16.00	\$1,280.00
80	Car Tracking Module	TBD	\$13.00	\$1,040.00
80	Power Module Included in this package	TBD	Included	Included
80	Speakers & Bluetooth Package	TBD	\$8.00	\$640.00
80	Ad Man Pro	TBD	\$5.00	\$400.00
80	Tournament Connect / Golf Genius Integration	TBD	\$4.00	\$320.00
80	3D Hole Flyovers	TBD	\$2.00	\$160.00

All Visage Module Proposal - Golfers Experience, Car Control & Car Tracking

Customer Initials - Additional Visage Options:

Speakers & Bluetooth _____ Ad Man Pro _____

Tournament Connect _____ 3D Flyovers _____

Pricing includes an installation in the field on the existing fleet

Customer: _____

Club Car/Dealer: _____

Title: _____

Title: _____

Date: _____

Date: _____