

CITY OF PORT ST. LUCIE AREAWIDE SPEED LIMIT REDUCTION DECISION PACKET



2021

City Council Presentation
Laura H. Dodd, AICP
Senior/Transportation Planner

This Page Intentionally Blank

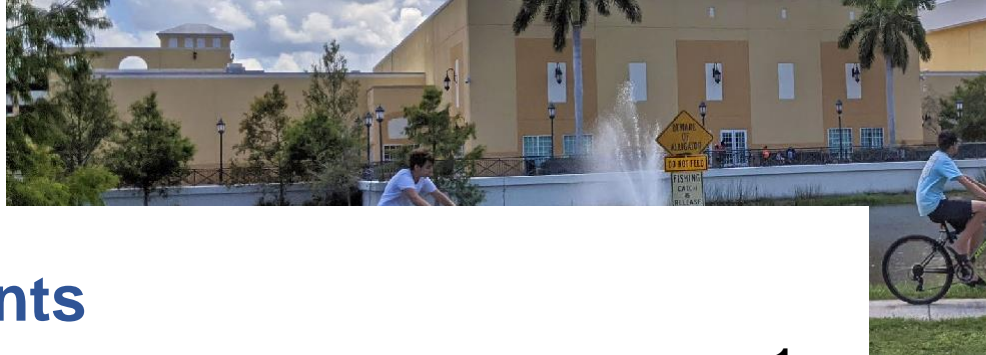
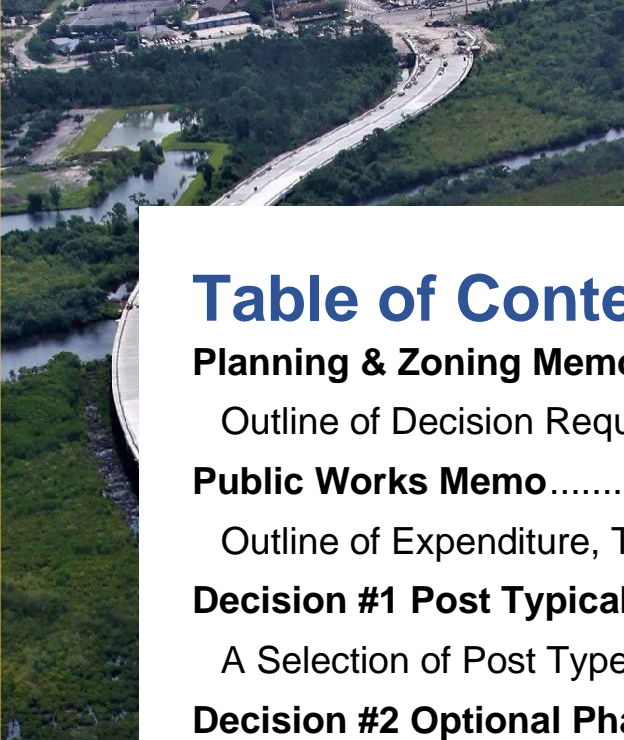


Table of Contents

- Planning & Zoning Memo** 1
 - Outline of Decision Requests and Background Information.....2
- Public Works Memo** 3
 - Outline of Expenditure, Timeline, and Recommendations 4
- Decision #1 Post Typical Selection** 5
 - A Selection of Post Type for Implementation..... 6
- Decision #2 Optional Phasing Selection** 7
 - A Selection of an Optional Phasing Program 8
- Decision #3 Public Outreach Plan** 9
 - Input or Acceptance of the Public Outreach Plan 10
- Decision #4 Additional Services** 11
 - Guidance on Additional Traffic Study for Collector Roadways..... 12
- Revised Areawide Speed Limit Reduction Study** 13
 - Acceptance of the Revised Areawide Speed Limit Reduction Study 13

AREAWIDE SPEED LIMIT REDUCTION DECISION PACKET



This Page Intentionally Blank



CITY OF PORT ST. LUCIE

Planning & Zoning Department

"A City for All Ages"


MEMORANDUM

RUSS BLACKBURN
City Manager

TO: Mayor and City Council

VIA: Russ Blackburn, City Manager 

THRU: Teresa Lamar-Sarno, Deputy City Manager 

FROM: Laura H. Dodd, AICP, Senior/Transportation Planner 

SUBJECT: Areawide Speed Limit Reduction Plan Decision Packet

DATE: August 4, 2021

The Planning Department is pleased to provide you with the following decision packet pertaining to the Revised Areawide Speed Limit Reduction Plan.

Decision Packet

As of the date of presentation of this packet, Planning is requesting guidance/input from City Council on the following:

- Acceptance of the Revised Areawide Speed Limit Reduction Plan
- Selection of a post typical for installation
- Optional Phasing Program
- Public Outreach Program
- Optional study on target collector roadways for speed reduction and/or traffic calming

Background

October 2020, the City Council unanimously approved the adoption of the Multimodal Plan. The Multimodal Plan was the catalyst of growing concerns over a lack of mobility choices within the City of Post St. Lucie, as indicated in the National Community Survey. One of the many recommendations provided in the Multimodal Plan was the incorporation of an areawide speed limit reduction study within applicable neighborhoods.

The study is necessitated per Section 316.189, F.S. which stipulates: Within residential districts, a municipality may set a maximum speed limit of 20 or 25 MPH on local streets after an investigation determines that such a limit is reasonable. Municipalities may set speed zones altering such speeds, both as to maximum and minimum, after investigation determines such

a change is reasonable and in conformity to criteria promulgated by the Florida Department of Transportation (FDOT) consistent with Section 316.189, F.S.

The study was completed and presented to City Council on June 21, 2021. Upon the request of the City Manager, by City Council directive, Planning sought additional analysis of three (3) neighborhoods which had previously not met the speed limit reduction criteria. The revised report is attached herein for your consideration.

Thank you for your time and consideration.

Laura H. Dodd, AICP
Senior/Transportation Planner





City of Port St. Lucie

PUBLIC WORKS DEPARTMENT

Accredited Agency - American Public Works Association



MEMORANDUM

TO: Laura Dodd, AICP Planning & Zoning

THRU: Heath Stocton, P.E. – Interim Director, Public Works *HS*

FROM: Joseph DeFronzo, P.E., RSP1, Eng., CIP & Support Div. Director, Public Works *JD*

DATE: July 15, 2021

SUBJECT: Citywide Neighborhood Speed Limit Reduction Implementation

Public Works staff estimated implementing a neighborhood speed limit reduction from 30 to 25 MPH citywide would require installation of approximately 1,130 new signs and removal of 1,700 existing signs within the 27 neighborhoods identified in the recently completed Areawide Speed Limit Analysis. Assuming the following:

- Signs will only be placed at the entrance points to the neighborhoods
- 2" square post at \$31.80 each
- 25 MPH Speed Limit Sign at \$30.25 each
- Installation or removal of sign and post \$75 each

Total Estimated Cost (including removal): \$300,000.00*

*If all the new signs were installed using 3" or 3.5" round aluminum posts (per FDOT specifications) the estimated cost would increase to approximately \$545 per sign or \$630,000.00. With decorative posts the estimated cost would increase to \$1,250 per sign or \$1,412,500.00.

Please note the total installation and removal could be completed in approximately 3-4 months based on the standard 2" square posts and installation with 3" or 3.5" round aluminum posts will increase this time frame to approximately 4-6 months.

This timeframe is for installation only and does not include approximately 3-4 months to secure a contractor. Total timeframe for implementation is 6-7 months. Below are a couple of additional items for consideration:

- Project cost is currently unfunded.
- Initial sign placement is only at neighborhood entrances. This may lead to future requests for additional signs within the neighborhoods.
- If FDOT standard or decorative posts are desired, the implementation would need to be phased.

Public Works recommends installing all new signs with FDOT- standard round aluminum posts, but installation can be made with the 2" square posts or decorative posts, if so directed.

This Page Intentionally Blank

CITY OF PORT ST. LUCIE: AREAWIDE SPEED LIMIT REDUCTION POST SELECTION AND SPECIFICATIONS

2" SQUARE POST



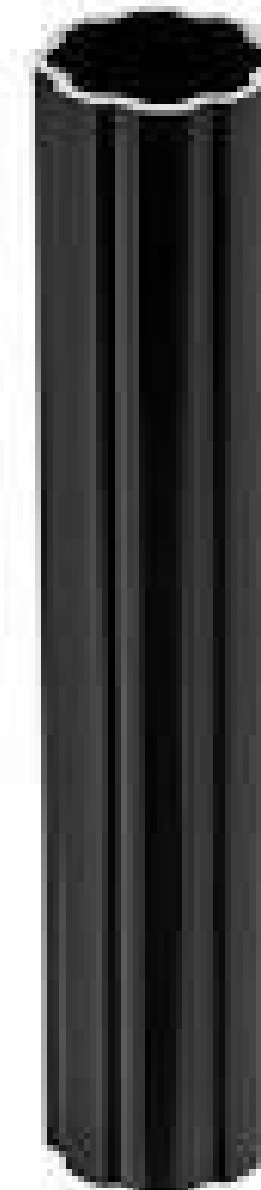
COST PER SIGN	\$31.80 EACH
OVERALL COST	\$300,000
TIME TO COMPLETE	~6 MONTHS
PROS	LEAST EXPENSIVE
CONS	LESS DURABLE

3" - 3.5" ROUND POST



COST PER SIGN	\$545 EACH
OVERALL COST	\$630,000
TIME TO COMPLETE	~7 MONTHS
PROS	FDOT STANDARD
CONS	MORE EXPENSIVE

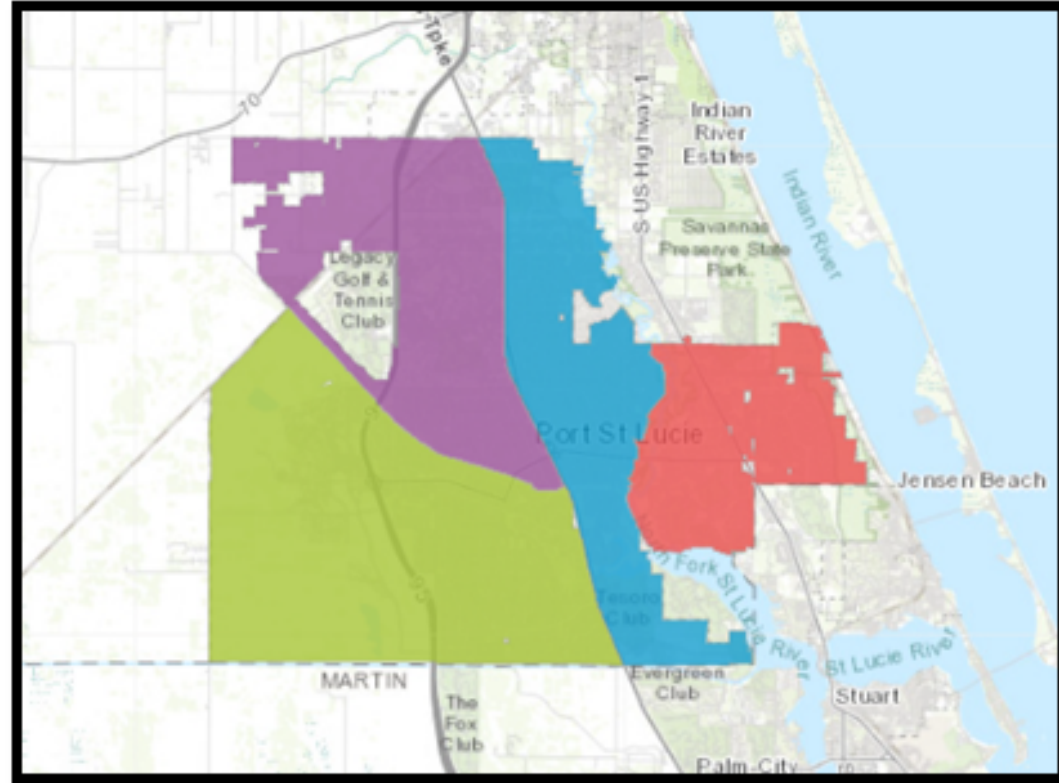
3" DECORATIVE POST



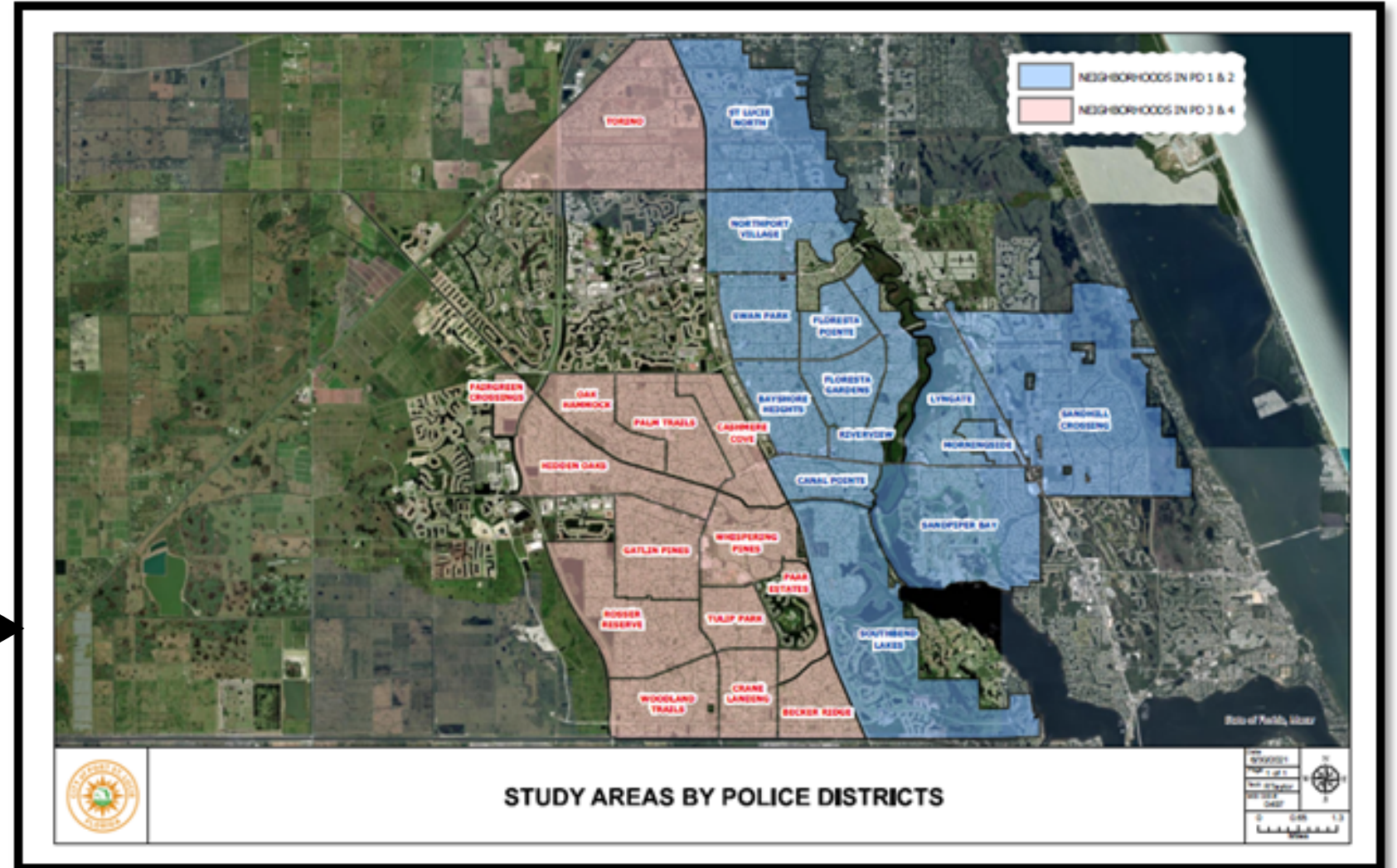
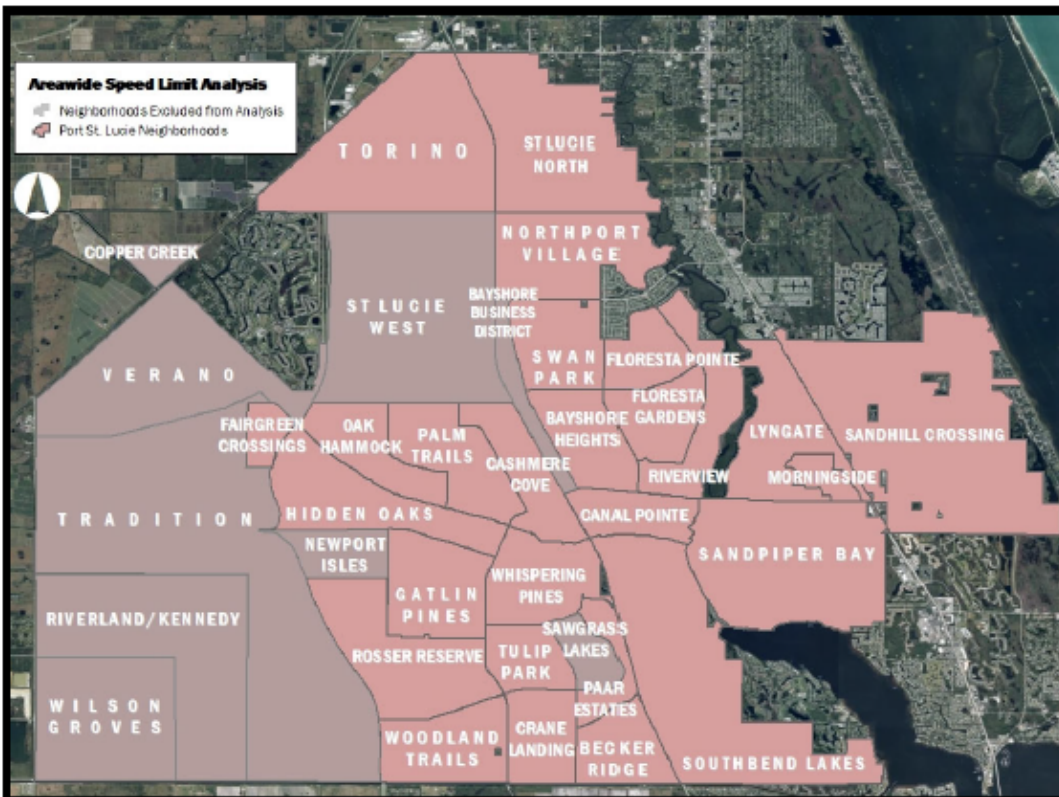
COST PER SIGN	\$1,250 EACH
OVERALL COST	\$1,412,500
TIME TO COMPLETE	~7 MONTHS
PROS	ATTRACTIVE
CONS	MOST EXPENSIVE

CITY OF PORT ST. LUCIE: AREAWIDE SPEED LIMIT REDUCTION OPTIONAL PHASING PROGRAM

POLICE DISTRICTS



NEIGHBORHOODS



Assume 50% of signs installed per phase.

	TOTAL COST	2 FY PHASED COST
3" - 3.5" Round Post	\$630,00	\$315,000
3" Decorative Post	\$1,412,500	\$706,250

PROJECT TASKS		DETAIL	Expenditure
1	Public Outreach Project Implementation		
1.1	Draft Ordinance	Draft Ordinance outlining Council and City Manager's directive to proceed with implementation.	
1.2	Interdepartmental Review	* Seek consensus from Police Department, Public Works, and Legal staff * Seek approval of draft ordinance from City Manager and/or designee	
1.3	Schedule Ordinance Adoption	Schedule ordinance readings to coincide with Phase 1 Preparing Public Outreach	
DELIVERABLE: Ordinance Adopting Areawide Speed Limit Reduction			n/a
2	Preparing Public Outreach (Phase 1)		
2.1	Host Project Kick-Off Meeting	Host meeting for staff to identify roles and scheduling	
2.2	Revise City Webpage/Documents	* Revise Speeding Campaign Video on Police Department Website * Revise Speeding Prevention Flyer on Police Department Website * Place widget on Police Department's speeding page to provide public access to information	
2.3	Officer & Public Education	Create educational video, featuring Chief or designee, for social media outreach	
DELIVERABLES: Revise Speeding Campaign Video; Revised Speeding Prevention Flyer; Update PD Website with information			n/a
3	Public Outreach (Phase 2)		
3.1	Social Media Campaign (Round #1)	Schedule Public Outreach Timeline and proceed	
3.1(a)	Social Media Memes	Generate memes for social media outreach	\$200
3.1(b)	Email Blast	Police Department and Communications	
3.1(c)	Press Release	Police Department and Communications	
3.1(d)	Citywide Banners	Generate and display seven (7) banners prior to program effective date	\$1,000
3.1(e)	Radio PSA	Communications provides recording for radio broadcast	\$200
3.1(f)	Paid Magazine Ad	(Optional) Generate educational ad for local distribution	\$3,000
3.1(g)	Utility Bill Insert	(Optional) Generate handout to be included with utility bill	\$1,400
DELIVERABLES: Memes, Email Blast, Press Release, Banners, Radio Recording, Magazine Ad, Utility Bill Insert			\$5,800
4	Implementation Outreach (Phase 3)		
4.1	PW Message Board Signs	Post message board signs at key locations notifying public of the effective date of enforcement.	
4.2	Social Media Campaign (Round #2)	Advise and educate of upcoming implementation	
4.2(a)	Social Media Memes	Generate memes for social media outreach	\$200
4.2(b)	Email Blast	Police Department and Communications	
4.2(c)	Press Release	Police Department and Communications	
4.2(d)	Pace Care Pledge Program	Initiate public pledge program to encourage safe driving.	TBD
4.3	City On-Hold Phone Message	Update City recording to provide information about implementation	
4.4	1PSL Call Takers Education	Provide 1PSL support staff with information to address concerns	
4.5	Memo to City Council	Provide memo and timeline to City Council on implementation	
DELIVERABLE: Message Boards, Memes, Email Blast, Press Release, Phone Recording, Email to 1PSL, Memo to City Council			\$6,000



"A City for All Ages"

CITY OF PORT ST. LUCIE

Planning & Zoning Department

MEMORANDUM

RUSS BLACKBURN
City Manager

TO: Mayor and City Council

VIA: Russ Blackburn, City Manager

THRU: Teresa Lamar-Sarno, Deputy City Manager

FROM: Laura H. Dodd, AICP, Senior/Transportation Planner

SUBJECT: Decision #4 – Collector Roadway Traffic Management Plan

DATE: August 4, 2021

This memo is to address Council's outstanding concerns pertaining to the speed limits and/or traffic calming on collector roadways within the City. Further, this "Decision Item" requests Council to provide directive to the City Manager and Staff on whether to pursue an additional study to address speed limits functionally classified as "Collector Roadways".

The draft scope of this study may include, but not be limited to, the following objectives:

- Identification of appropriate Collector roadways to be included in the study
- Traffic data collection and context sensitive assessment on the identified roadways
- Itemize "Traffic Management" solutions for the identified roadways
- Identify implementation strategies for the proposed solution, if any, that are recommended

Key points of Consideration:

- The proposed Traffic Management Plan is currently unfunded
- The proposed study coincides with the Multimodal Plan Objectives:
 - Goal #1, Strategy 1.1 – Conduct planning studies to establish multimodal quality levels of service; and
 - Goal #2, Strategy 1.3 - Build upon Traffic Calming Policy to conduct areawide speed management programs in neighborhoods with existing or desired high levels of pedestrian and bicyclist activity; and
 - Goal #3, Strategy 3.1 - Enhance the integration and connectivity of the transportation system, across and between modes, for people and freight.

Staff Recommendation:

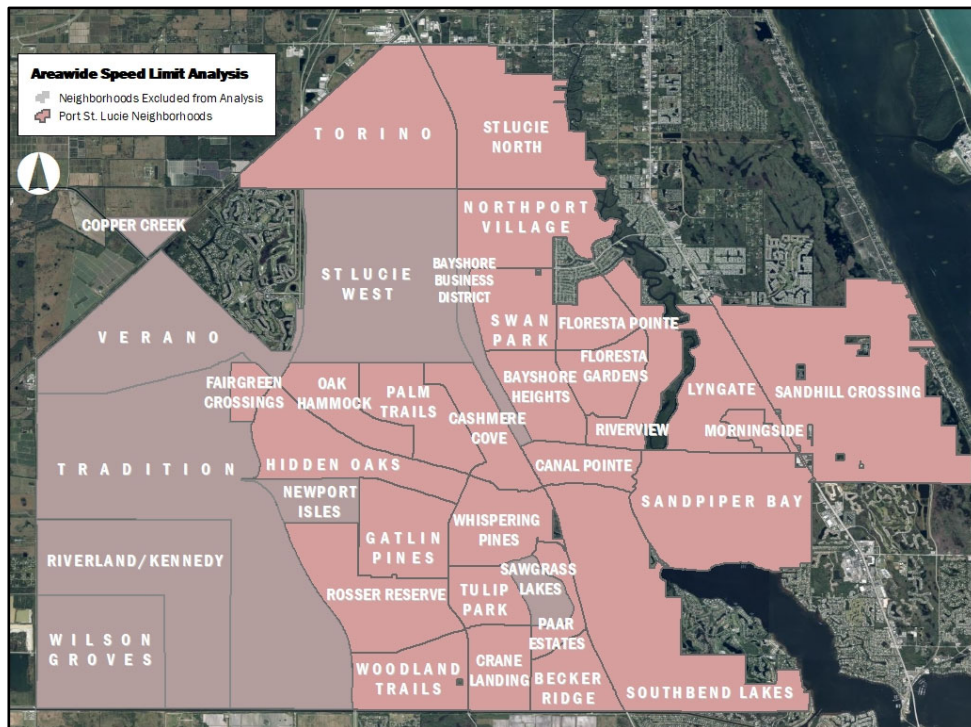
Provide Staff direction to pursue the Collector Roadway Traffic Management Plan in FY 21/22 to ensure mobility solutions within these corridors are incorporated into projects and policies now and in the future.

This Page Intentionally Blank



Residential Street Areawide Speed Limit Analysis

City of Port St. Lucie, Florida



Kimley»Horn

© 2021 Kimley-Horn and Associates, Inc.
July 2021
143219002

*Areawide Speed Limit Analysis
for Submittal to
The City of Port St. Lucie*

Residential Street Areawide Speed Limit Analysis

Prepared for:
City of Port St. Lucie, Florida



Prepared by:
Kimley-Horn and Associates, Inc.

Kimley»»Horn

©2021 Kimley-Horn and Associates, Inc.
July 2021
143219002

Executive Summary

Kimley-Horn was retained by the City of Port St. Lucie (the City) to conduct a neighborhood speed limit analysis to evaluate speed limits and travel speeds for public residential streets in 27 ungated neighborhoods within the City. This analysis follows directly from the recently adopted Port St. Lucie Multimodal Plan, which found that many local residential streets have no sidewalks. Residents on these streets either walk on the roadside or share street space with cars traveling up to 30 miles per hour (MPH) or greater. According to Section 316.189, Florida Statutes (F.S.), streets with no posted speed have a default speed limit of 30 MPH. Some residential streets in the City have 30 MPH speed limit signs.

Within residential districts, a municipality may set a maximum speed limit of 20 or 25 MPH on local streets after an investigation determines that such a limit is reasonable. Municipalities may set speed zones altering such speeds, both as to maximum and minimum, after investigation determines such a change is reasonable and in conformity to criteria promulgated by the Florida Department of Transportation (FDOT) consistent with Section 316.189, F.S. This analysis follows the process established in the FDOT *Speed Zoning for Highways, Roads, and Streets* manual (August 2018) for areawide “blanket” speed restrictions.

Continuous 24-hour weekday (Tuesday, Wednesday, or Thursday) roadway volumes, speed classifications, and 10 MPH pace data were collected within the City at 45 locations. The data analysis results indicate public local residential streets within the City meet FDOT criteria for a posted areawide speed limit of 25 MPH in all 27 ungated neighborhoods studied.

TABLE OF CONTENTS

	<u>Page</u>
Introduction	1
Data Collection.....	4
Data Analysis	4
Comparable Studies	7
Additional Considerations.....	9
Conclusion	12

LIST OF FIGURES

	<u>Page</u>
Figure 1: Study Neighborhoods.....	2
Figure 2: Roadways Excluded from Analysis.....	3

LIST OF TABLES

	<u>Page</u>
Table 1: Average Speed and 10-MPH Pace by Neighborhood.....	6

LIST OF APPENDICES

APPENDIX A	Location and Data Collection Maps
APPENDIX B:	Traffic Data Collection

Introduction

A neighborhood speed limit analysis was completed to evaluate speed limits and travel speeds for public residential streets in 27 neighborhoods within the City of Port St. Lucie (the City). The study area, comprised of the City's limits, is shown in Figure 1 and is generally bounded by Midway Road and Glades Cut-Off Road to the north, the C-23 Canal to the south, SE Green River Parkway to the east, and Range Line Road to the west. Gated neighborhoods are not included in this analysis and are not subject to areawide speed limits determined through this analysis.

The following neighborhoods were evaluated as part of this study.

- | | | |
|------------------------|-----------------------|-----------------------|
| 1. Bayshore Heights | 10. Hidden Oaks | 19. Sandhill Crossing |
| 2. Becker Ridge | 11. Lyngate | 20. Sandpiper Bay |
| 3. Canal Pointe | 12. Morningside | 21. Southbend Lakes |
| 4. Cashmere Cove | 13. Northport Village | 22. St. Lucie North |
| 5. Crane Landing | 14. Oak Hammock | 23. Swan Park |
| 6. Fairgreen Crossings | 15. Paar Estates | 24. Torino |
| 7. Floresta Gardens | 16. Palm Trails | 25. Tulip Park |
| 8. Floresta Pointe | 17. Riverview | 26. Whispering Pines |
| 9. Gatlin Pines | 18. Rosser Reserve | 27. Woodland Trails |

The following street types are excluded from this analysis. Figure 2 presents a map that shows excluded roads and streets. Please see Appendix A for larger map versions.

- State Highway System roads.
- County maintained roads.
- Arterial and Collector streets.
- Gated neighborhood streets and privately-owned streets.

Existing residential roadway speed limits are generally 30 miles per hour (MPH). The default maximum speed within a municipality is 30 MPH per Florida Statute (FS) 316.189. A municipality may set a maximum speed limit of 20 or 25 MPH on local streets following an engineering analysis. The purpose of this study is to assess the speeds on residential streets within the City. The study methodology is consistent with criteria promulgated by FDOT consistent with Section 316.189, F.S. This analysis follows the process established in the FDOT *Speed Zoning for Highways, Roads, and Streets* manual (August 2018) and is consistent with comparable efforts recently performed in other municipalities. The following sections consist of data collection, data analysis, results of the neighborhood speed limit study, additional considerations, and a review of comparable studies.

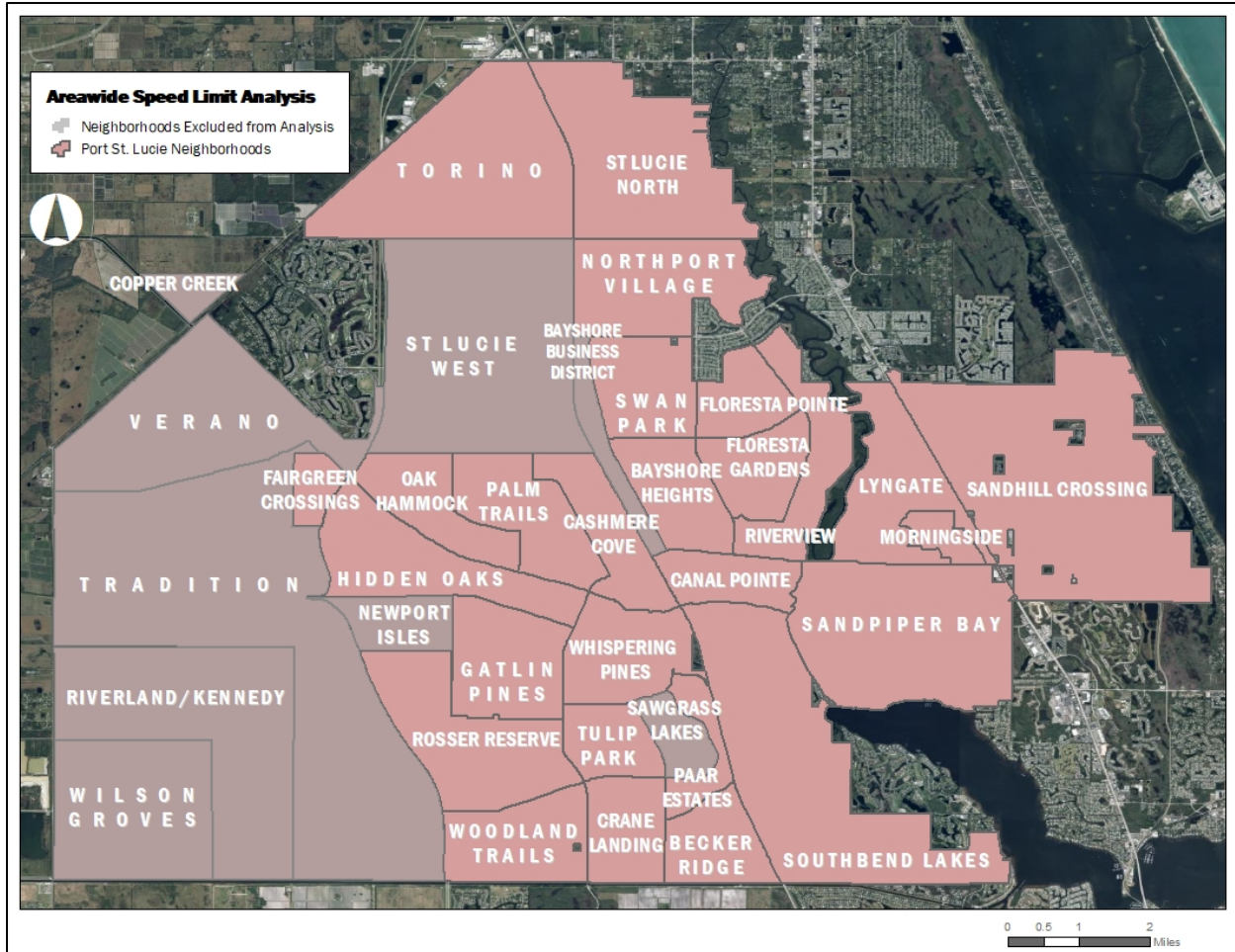
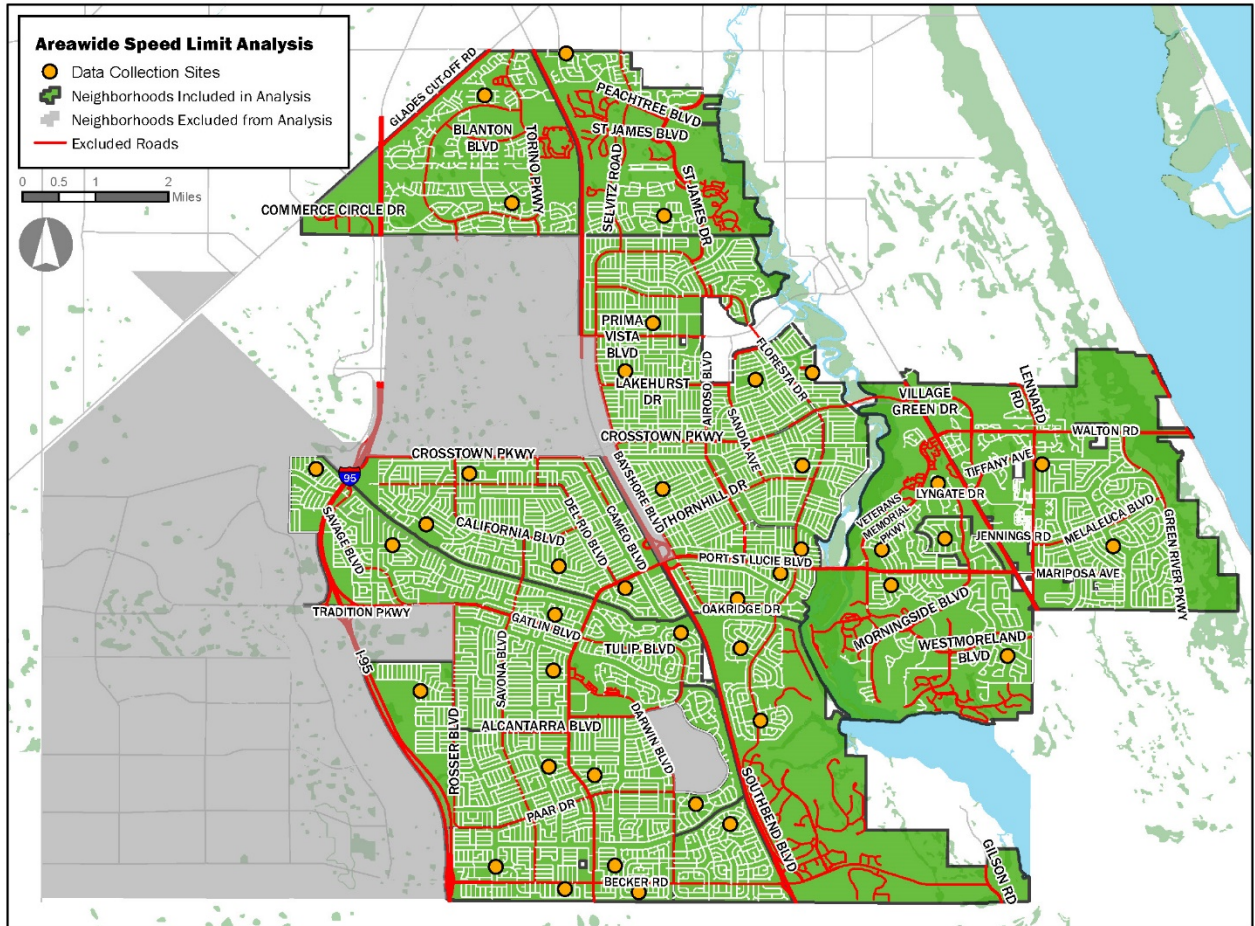


Figure 1: Study Neighborhoods
(See also Appendix A)



March 2021

Figure 2: Roadways Excluded from Analysis
(See also Appendix A)

Data Collection

Traffic data were collected for residential streets within 27 neighborhoods. The data collection included continuous 24-hour weekday (Tuesday, Wednesday, or Thursday) roadway volumes, speed classifications, and 10-MPH pace data for 45 locations. Map figures illustrating the neighborhoods and general location of the data collection sites are included in Appendix A. The traffic data set was refined to 45 locations.

The data collection locations were selected within each neighborhood along residential local roadways appropriate for supporting a neighborhood speed reduction study. Detailed traffic data are included in Appendix B.

Data Analysis

The collected traffic data were evaluated in accordance with the guidance provided in the FDOT *Speed Zoning for Highways, Roads, and Streets* manual (2018). The following provides definitions for the traffic engineering values used in the analysis.

85th Percentile Speed

The 85th percentile speed is the speed at which 85 percent of vehicles travel at or below. The 85th percentile speed was included for all locations. Average neighborhood-specific and overall city-wide 85th percentile speed values were calculated. A weighted average of the 85th percentile was calculated using vehicles per day for neighborhoods with more than one data collection site. A summary of the neighborhood-specific 85th percentile speeds is presented in Table 1.

10-MPH Pace

The 10-MPH pace is the 10-MPH band of travel speeds containing the largest number of vehicles collected in the study. The 10-MPH pace data was included for all locations. Average neighborhood-specific and city-wide upper limit 10-MPH pace speeds were calculated. A weighted average of the 10-mph pace was calculated using vehicles per day for neighborhoods with more than one data collection site. A summary of the neighborhood-specific 10-MPH pace speeds is presented in Table 1.

The FDOT *Speed Zoning for Highways, Roads, and Streets* manual (2018) guidance indicates the following conditions:

Condition 1

The posted speed limit should not differ from the 85th percentile speed or the upper limit of the 10 MPH pace (whichever is less) by more than three (3) MPH.

Condition 2

A posted speed limit of more than eight (8) MPH below the 85th percentile speed is not authorized. Furthermore, a speed limit of four (4) to eight (8) MPH less than the 85th percentile speed shall be authorized if supported by a supplemental investigation which identifies the following:

- There are road or roadside features not readily obvious to the typical driver such as length of section, alignment, roadway width, surface condition, sight distance, traffic volume, crash experience, maximum comfortable speed in curves, side friction (roadside development), or signal progression.
- Other standard sign and markings have been tried but found ineffective; or
- To support a context classification target speed as defined in the FDOT Design Manual.

Table 1 provides a summary of the neighborhood-specific 85th percentile and 10-MPH pace average speeds. Seven (7) City neighborhoods met Condition 1 for a 25 MPH posted speed limit. Twenty (20) City neighborhoods met Condition 2. Meaning, the 85th percentile speed is within four (4) to eight (8) MPH of the posted speed limit and a speed limit reduction is recommended to support a target speed of 25 MPH within the narrow residential street context.

The city-wide 85th percentile average speed was calculated to be 31 MPH and the upper limit of the city-wide 10-MPH pace speed was calculated to be 29 MPH. The results of the city-wide average speed data analysis indicate that the residential neighborhoods within the City of Port St. Lucie meet the FDOT criteria for a posted speed limit of 25 MPH on narrow residential streets.

Table 1: Average Speed and 10-MPH Pace by Neighborhood

Neighborhood	Average 85 th Percentile Speed (MPH) ⁽²⁾	Average Upper Limit of 10-MPH Pace ⁽²⁾	Meets Conditions for 25 MPH Posted Speed Limit ⁽¹⁾	Number of Locations
Bayshore Heights	33	29	Yes (Condition 2)	1
Becker Ridge	32	28	Yes (Condition 1)	2
Canal Pointe	31	30	Yes (Condition 2)	2
Cashmere Cove	32	29	Yes (Condition 2)	1
Crane Landing	33	29	Yes (Condition 2)	1
Fairgreen Crossings	33	34	Yes (Condition 2)	3
Floresta Gardens	34	24	Yes (Condition 1)	1
Floresta Pointe	31	29	Yes (Condition 2)	1
Gatlin Pines	30	24	Yes (Condition 1)	1
Hidden Oaks	31	29	Yes (Condition 2)	2
Lyngate	33	31	Yes (Condition 2)	2
Morningside	31	29	Yes (Condition 2)	1
Northport Village	31	32	Yes (Condition 2)	3
Oak Hammock	32	29	Yes (Condition 2)	1
Paar Estates	29	29	Yes (Condition 2)	1
Palm Trails	33	29	Yes (Condition 2)	2
Riverview	31	29	Yes (Condition 2)	2
Rosser Reserve	28	26	Yes (Condition 1)	2
Sandhill Crossing	33	29	Yes (Condition 2)	2
Sandpiper Bay	29	31	Yes (Condition 2)	2
Southbend Lakes	30	29	Yes (Condition 2)	1
St. Lucie North	30	29	Yes (Condition 2)	2
Swan Park	32	29	Yes (Condition 2)	1
Torino	27	29	Yes (Condition 1)	2
Tulip Park	32	28	Yes (Condition 1)	3
Whispering Pines	30	24	Yes (Condition 1)	1
Woodland Trails	29	29	Yes (Condition 2)	2
City-Wide Average	31	29	Yes	45 Total Locations

Notes: ⁽¹⁾ “Yes (Condition 1)” indicates locations where the lesser of the 85th percentile speed or upper limit of the 10 MPH pace is within three (3) MPH of the posted speed limit (25 MPH); “Yes (Condition 2)” indicates locations where the 85th percentile speed is within four (4) to eight (8) MPH of the posted speed limit and a speed limit reduction is recommended to support a target speed of 25 MPH within the narrow residential street context.

⁽²⁾ A weighted average was calculated using vehicles per day for neighborhoods with more than one data collection location.

Comparable Studies

The areawide speed limit analysis performed for the City follows a methodology consistent with studies completed in other municipalities.

An areawide speed limit analysis was conducted for the City of Miami in 2017 where speed limits and travel speeds were evaluated for 29 neighborhoods. The data analysis of city-wide data considering the average 85th percentile speed and average 10 MPH pace for all study neighborhoods indicated that the residential neighborhoods within the City of Miami met FDOT criteria for a posted speed limit of 25 MPH on a citywide basis for residential streets. The data analysis also determined that three (3) study neighborhoods met the FDOT criteria for a posted speed limit of 20 MPH.

The City of Miami is implementing the comprehensive citywide speed limit reduction program in a phased manner. Phase I of the program consisted of installing over 300 25-MPH signs in four (4) neighborhoods, a communications and education campaign, police targeted enforcement, and a six-month traffic evaluation study and analysis (June 2019 to December 2019). Phase II of the program is currently in progress and consists of installing over 2,000 25-MPH signs throughout five (5) City of Miami Districts. Variable Message Signs (VMS) will be installed along key arterial roadways during the sign installation.

A municipal neighborhood speed limit study was conducted for the Town of Miami Lakes in 2019 where speed limits and travel speeds were evaluated for six (6) neighborhoods. A methodology like the one used for the City of Miami was used to identify area-wide speed limit reduction. The results indicated that four (4) of the six (6) neighborhoods met the FDOT criteria to reduce the posted speed limit to 25 MPH.

The neighborhoods included in the two (2) comparable municipalities were selected on their ability to meet development and roadway conditions typical of residential communities. Non-private, ungated neighborhoods with a sufficient supply of single-family homes consisting mostly of local residential roadways were chosen to be included in the studies. The neighborhood of Bay Point (Miami, FL) is an example of a community that was excluded from the analysis because it is

gated, and as a result its roadways are private and not maintained by the City of Miami Department of Public Works nor the Miami-Dade County Department of Transportation and Public Works.

Within the selected neighborhoods, data collection sites were determined by their proximity to single-family and multi-family residential land uses. Continuous 24-hour weekday (Tuesday, Wednesday, or Thursday) roadway volumes, speed classifications, and 10-MPH pace data were collected at the specified locations during good weather and roadway conditions. Both studies used the guidance from FDOT's *Speed Zoning for Highway, Roads, and Streets* manual to determine if an areawide speed limit of 25 MPH was applicable to the neighborhoods included in the analysis.

The City of Miami also conducted a series of neighborhood traffic calming studies focused on evaluating residential city-maintained roadways for traffic calming measures. The traffic calming studies involved conducting stakeholder input, field observations, and traffic data analysis to determine appropriate traffic calming improvements to enhance livability on residential streets. Generally, physical changes to streets and roadways are more effective at modifying travel speeds than regulatory speed limit changes.

There are many other examples of municipalities that have established residential neighborhood areawide speed limits lower than the statewide default 30 MPH speed limit including West Palm Beach, Fort Lauderdale, Dania Beach, North Palm Beach, and Biscayne Park.



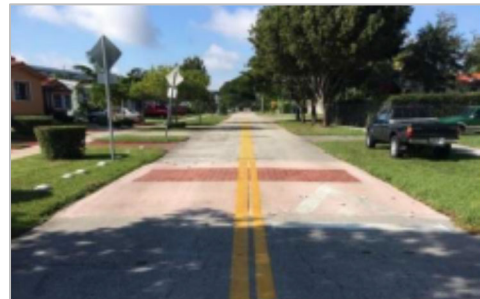
Additional Considerations

The following traffic calming measures intend to reduce travel speeds and enhance safety for all roadway users through geometric reconfiguration or the installation of traffic calming devices. The selection of traffic calming techniques should be contextual and requires a location-by-location analysis.

Traffic calming measures commonly used along residential roadways include speed tables, speed cushions, chicanes, raised intersections, mid-block bulb-outs, and center island narrowing (traffic circles).

Speed Tables

Typically placed mid-block, speed tables are elongated speed humps that raise the entire wheelbase of a vehicle to reduce its speed. This traffic calming measure is most effective in areas with lower operating speeds, such as residential neighborhoods or collector streets. An additional feature of this device is that it can also be used as a raised mid-block crossing. Speed tables generally have a maximum height of five (5) inches. The flat table portion of the speed table is generally 10 feet in length with six (6)-foot approaches. Speed tables should be spaced approximately 300 to 1,200 feet apart.



Speed Cushions

Speed cushions raise the roadway to reduce vehicle speeds. A speed cushion differs from a speed table in that it includes wheel cutouts to allow vehicles with wide-width wheel tracks, specifically emergency vehicles, to pass without being affected by the device. These are also effective for providing bicyclists with an unobstructed passage in scenarios where there is no alternate path for riding. The raised portion of the traffic calming device extends



across both directions of travel, the gap is located between the humps. Speed cushions are typically three (3) inches high and four (4) feet long. The width of these devices will vary and depends on the size of emergency vehicles and other large vehicles that are anticipated to pass.

Chicanes

Chicanes intend to reduce vehicle speeds by narrowing the roadway and installing alternating mid-block curb extensions that require vehicles to follow a curving, S-shaped path. Chicanes also provide opportunities for landscaping and other pedestrian amenities to be implemented. This is an effective traffic calming measure in areas where the roadway continues in a straight path for long distances.



Raised Intersections

A raised intersection consists of a raised surface extending the length of an intersection and is intended to increase awareness of bicyclists and pedestrians at intersections and reduce vehicle speeds. The elevated surface can be made from a variety of materials including asphalt, concrete, and pavers. Inclines are provided on approaches and ramp up to the flat, raised portion of the intersection. The entire intersection is elevated by approximately three (3) to five (5) inches or the elevation of the sidewalk. Crosswalks are also included in the raised portion of the intersection.



Mid-Block Bulb-Outs

Mid-block bulb-outs are used to tighten the geometry of the roadway, restricting the available space that vehicles are able to travel through. By narrowing the roadway, motorists reduce their speed to travel more cautiously through the path. The installation of these traffic calming devices can have many benefits including improved



pedestrian visibility for motorists, shorter crossing distances for pedestrians, and additional space for implementing pedestrian amenities or landscaping. Mid-block bulb-outs may be installed on one or both sides of the roadway.

Center Island Narrowing

Center island narrowing consists of installing small traffic circles placed in the middle of the roadway used as an effective traffic calming measure, as it forces motorists to divert from a straight-line path and maneuver around the



feature. If constructed, the center island needs to be sufficiently elevated and visible to prevent vehicles from driving through the island. These islands can be painted, domed, or curbed, and often include landscaping elements. These devices are well-suited for collectors and local streets.

Conclusion

A neighborhood speed limit study was completed to evaluate speed limits and travel speeds for residential streets in 27 neighborhoods within in the City of Port St. Lucie. The study area, comprising of the City's limits is generally bounded by Midway Road and Glades Cut-Off Road to the north, the C-23 Canal to the south, SE Green River Parkway to the east, and Range Line Road to the west.

Continuous 24-hour weekday (Tuesday, Wednesday, or Thursday) roadway volumes, speed classifications, and 10-MPH pace data were collected within the City at 45 locations. The results of the city-wide average speed data analysis indicate that the ungated residential neighborhoods included in this analysis meet the FDOT criteria for an areawide posted speed limit of 25 MPH on local residential streets.

Within residential districts, a municipality may set a maximum speed limit of 20 or 25 MPH on local streets after an investigation determines that such a limit is reasonable. Municipalities may set speed zones altering such speeds, both as to maximum and minimum, after investigation determines such a change is reasonable and in conformity to criteria promulgated by FDOT consistent with Section 316.189, F.S. This analysis followed the process established in the FDOT *Speed Zoning for Highways, Roads, and Streets in Florida* manual (August 2018) for areawide "blanket" speed restrictions.

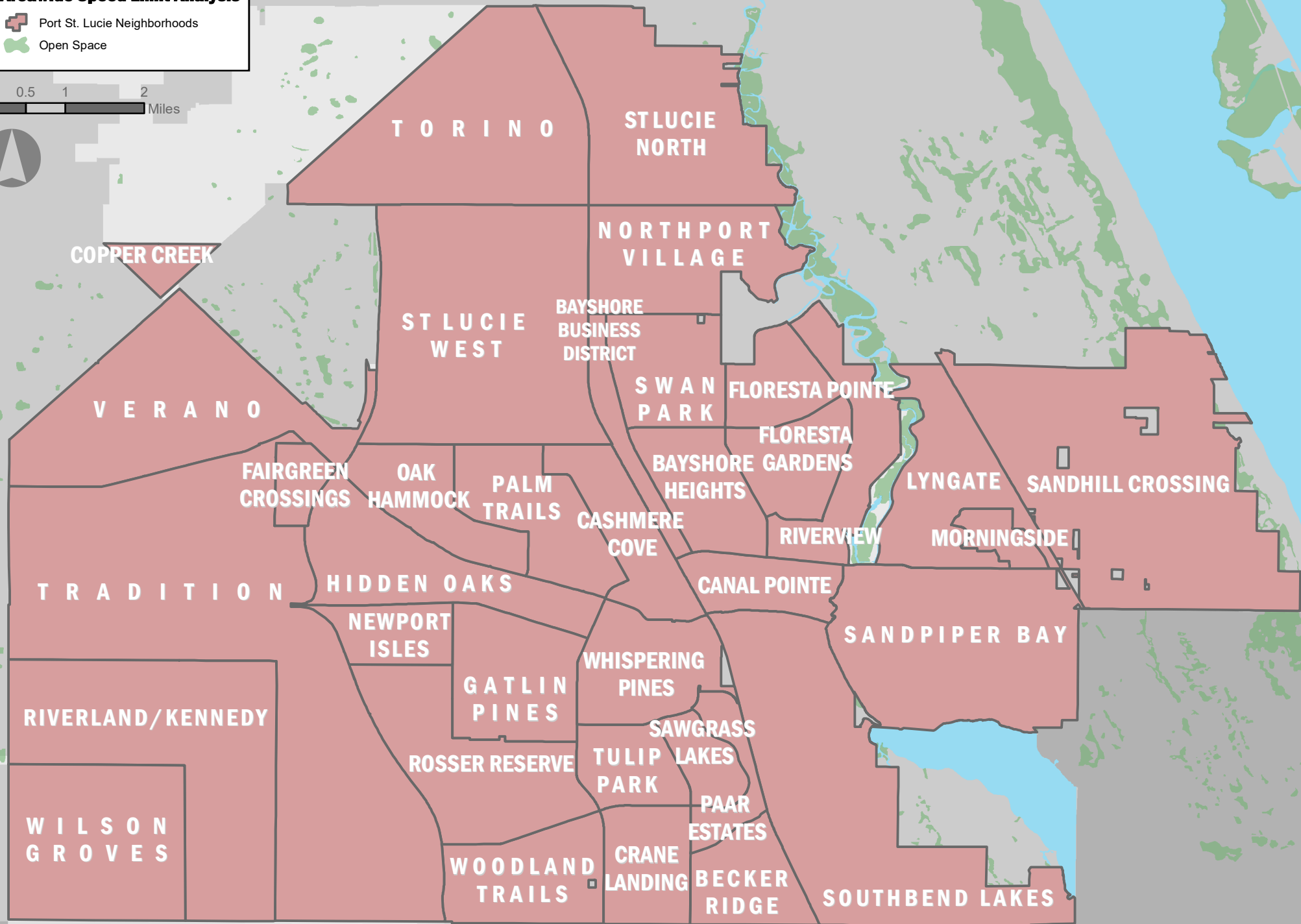
Appendix A

Location and Data Collection Maps





Areawide Speed Limit Analysis

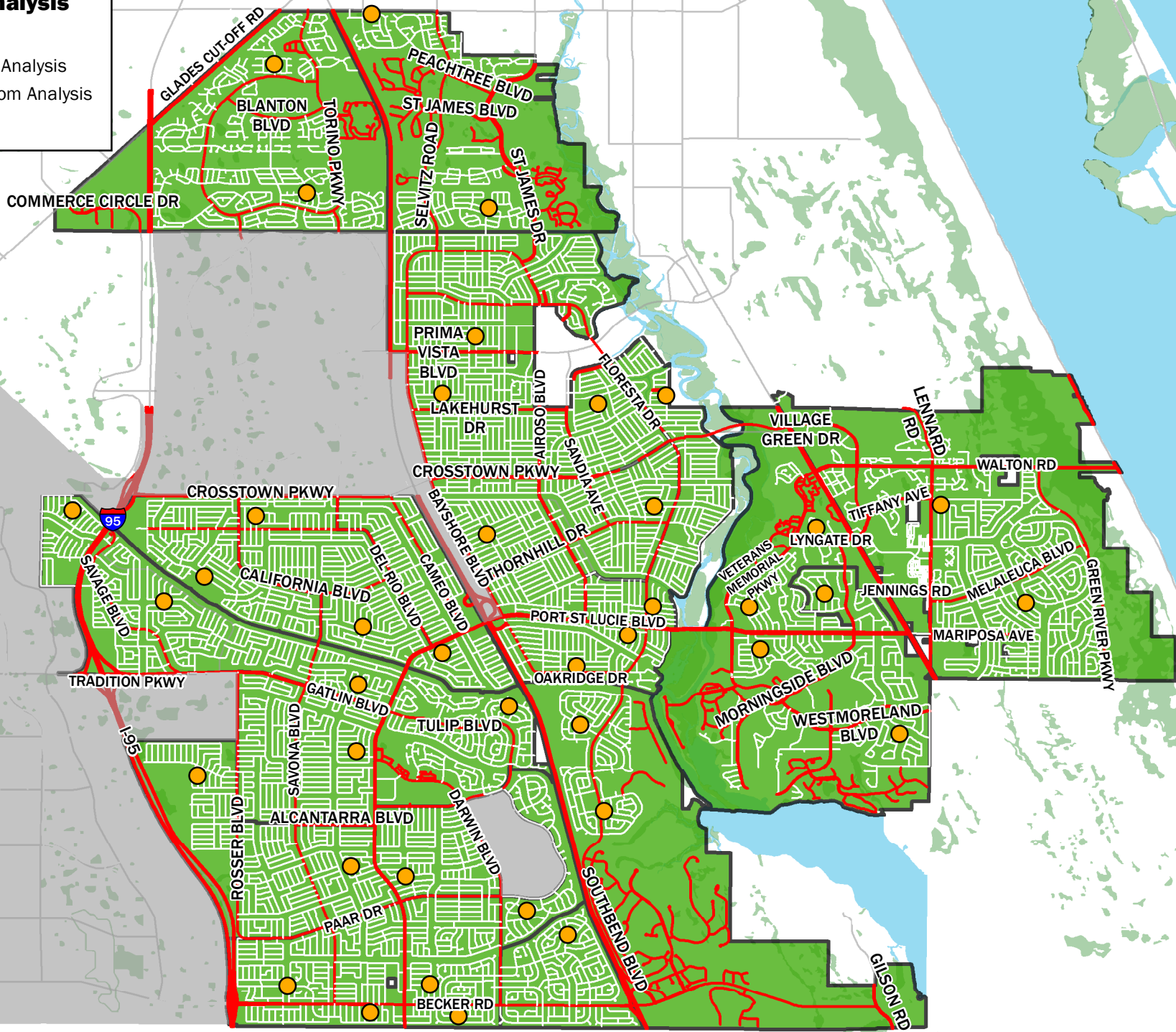
- Port St. Lucie Neighborhoods
- Open Space

0 0.5 1 2 Miles



Areawide Speed Limit Analysis

-  Data Collection Sites
-  Neighborhoods Included in Analysis
-  Neighborhoods Excluded from Analysis
-  Excluded Roads



Appendix B

Traffic Data Collection

Neighborhood	Data Collection Locations	Average Vehicles per Day	Average 85th Percentile Speed (MPH) ⁽¹⁾	Average 10-MPH Pace ⁽¹⁾
Bayshore Heights	1	560	33	20-29
Becker Ridge	2	204	32	19-28
Canal Pointe	2	227	31	21-30
Cashmere Cove	1	170	32	20-29
Crane Landing	1	391	33	20-29
Fairgreen Crossings	3	670	33	25-34
Floresta Gardens	1	135	34	15-24
Floresta Pointe	1	144	31	20-29
Gatlin Pines	1	191	30	15-24
Hidden Oaks	2	705	31	20-29
Lyngate	2	227	33	22-31
Morningside	1	167	31	20-29
Northport Village	3	178	31	23-32
Oak Hammock	1	492	32	20-29
Paar Estates	1	79	29	20-29
Palm Trails	2	423	33	20-29
Riverview	2	395	31	20-29
Rosser Reserve	2	102	28	17-26
Sandpiper Bay	2	169	29	22-31
Sandhill Crossing	2	333	33	20-29
Southbend Lakes	1	328	30	20-29
St. Lucie North	2	297	30	20-29
Swan Park	1	297	32	20-29
Torino	2	322	27	20-29
Tulip Park	3	312	32	19-28
Whispering Pines	1	34	30	15-24
Woodland Trails	2	500	29	20-29
Overall	45	318	31	19-28

Notes: ⁽¹⁾ A weighted average was calculated using vehicles per day for neighborhoods with more than one data collection location.

SPEED

1789 SW Burlington St

Day: Wednesday
Date: 4/7/2021

City: Port St. Lucie
Project #: FL21_140076_025

Summary

Time	< 15	15 - 19	20 - 24	25 - 29	30 - 34	35 - 39	40 - 44	45 - 49	50 - 54	55 - 59	60 - 64	65 - 69	70 +	Total
00:00 AM	0	0	0	1	0	0	0	0	0	0	0	0	0	1
01:00	0	0	0	1	2	0	0	0	0	0	0	0	0	3
02:00	0	0	0	1	0	0	0	0	0	0	0	0	0	1
03:00	0	0	0	0	0	0	0	0	0	0	0	0	0	0
04:00	0	1	0	1	0	0	0	0	0	0	0	0	0	2
05:00	0	2	1	2	0	1	0	0	0	0	0	0	0	6
06:00	0	0	1	6	5	0	0	0	0	0	0	0	0	12
07:00	0	1	9	9	6	5	2	0	0	0	0	0	0	32
08:00	2	7	14	12	7	1	0	0	0	0	0	0	0	43
09:00	1	1	8	8	10	1	0	0	0	0	0	0	0	29
10:00	0	5	9	7	5	0	0	0	0	0	0	0	0	26
11:00	2	5	10	11	3	2	0	1	0	0	0	0	0	34
12:00 PM	1	3	12	10	5	0	1	0	0	0	0	0	0	32
13:00	0	5	3	7	12	6	2	0	0	0	0	0	0	35
14:00	3	4	15	8	6	2	0	0	0	0	0	0	0	38
15:00	6	6	12	9	11	3	0	1	0	0	0	0	0	48
16:00	2	6	14	24	15	1	0	0	0	0	0	0	0	62
17:00	1	1	9	8	12	2	1	0	0	0	0	0	0	34
18:00	0	2	8	16	12	1	2	0	0	0	0	0	0	41
19:00	1	4	10	8	6	5	0	0	0	0	0	0	0	34
20:00	0	1	5	10	3	1	0	0	0	0	0	0	0	20
21:00	0	0	5	6	0	1	0	0	0	0	0	0	0	12
22:00	0	2	2	3	2	2	0	0	0	0	0	0	0	11
23:00	0	0	1	0	1	2	0	0	0	0	0	0	0	4
Totals	19	56	148	168	123	36	8	2						560
% of Totals	3%	10%	26%	30%	22%	6%	1%	0%						100%

AM Volumes	5	22	52	59	38	10	2	1	0	0	0	0	0	189
% AM	1%	4%	9%	11%	7%	2%	0%	0%						34%
AM Peak Hour	08:00	08:00	08:00	08:00	09:00	07:00	07:00	11:00						08:00
Volume	2	7	14	12	10	5	2	1						43
PM Volumes	14	34	96	109	85	26	6	1	0	0	0	0	0	371
% PM	3%	6%	17%	19%	15%	5%	1%	0%						66%
PM Peak Hour	15:00	15:00	14:00	16:00	16:00	13:00	13:00	15:00						16:00
Volume	6	6	15	24	15	6	2	1						62
Directional Peak Periods		AM 7-9				NOON 12-2			PM 4-6			Off Peak Volumes		
All Speeds		Volume	%		Volume	%		Volume	%		Volume	%		
		75	↔	13%	67	↔	12%	96	↔	17%	322	↔	58%	

Direction	Percentiles					
	15th	50th	Average	85th	95th	ADT
	20	27	27	33	38	560
Summary	Pace					
	10mph Pace	# in Pace	% in Pace	Number of Vehicles >= 25 MPH	% of Vehicles >= 25 MPH	
	20 - 29	316	56.43%	337	60.18%	

SPEED

476 SW Crawfish Dr

Day: Wednesday
Date: 4/14/2021

City: Port St. Lucie
Project #: FL21_140076_015

Summary

Time	< 15	15 - 19	20 - 24	25 - 29	30 - 34	35 - 39	40 - 44	45 - 49	50 - 54	55 - 59	60 - 64	65 - 69	70 +	Total
00:00 AM	0	0	0	0	0	0	0	0	0	0	0	0	0	0
01:00	0	0	0	0	0	0	0	0	0	0	0	0	0	0
02:00	0	0	0	0	0	0	0	0	0	0	0	0	0	0
03:00	0	0	0	0	0	0	0	0	0	0	0	0	0	0
04:00	0	0	0	0	0	0	0	0	0	0	0	0	0	0
05:00	0	0	1	0	0	0	0	0	0	0	0	0	0	1
06:00	1	1	0	0	0	0	0	0	0	0	0	0	0	2
07:00	1	2	1	1	0	0	0	0	0	0	0	0	0	5
08:00	2	2	1	0	0	1	0	0	0	0	0	0	0	6
09:00	3	0	0	1	0	0	0	0	0	0	0	0	0	4
10:00	1	0	3	1	0	1	0	0	0	0	0	0	0	6
11:00	2	1	1	0	1	0	0	0	0	0	1	0	0	5
12:00 PM	0	1	2	0	1	0	0	0	0	0	0	0	0	4
13:00	0	0	0	0	0	0	0	0	0	0	0	0	0	0
14:00	2	1	1	1	0	0	0	0	0	0	0	0	0	5
15:00	1	1	1	2	0	0	0	0	0	0	0	0	0	5
16:00	3	1	4	0	0	0	0	0	0	0	0	0	0	8
17:00	1	3	2	2	1	1	0	0	0	0	0	0	0	10
18:00	3	1	3	3	0	0	0	0	0	0	0	0	0	10
19:00	0	0	0	1	0	0	0	0	0	0	0	0	0	1
20:00	1	1	1	1	1	1	0	0	0	0	0	0	0	5
21:00	0	0	0	2	0	0	0	0	0	0	0	0	0	2
22:00	0	0	0	0	0	0	0	0	0	0	0	0	0	0
23:00	0	1	0	1	0	0	0	0	0	0	0	0	0	2
Totals	21	16	21	16	4	3								81
% of Totals	26%	20%	26%	20%	5%	4%								100%

AM Volumes	10	6	7	3	1	2	0	0	0	0	0	0	0	29		
% AM	12%	7%	9%	4%	1%	2%								36%		
AM Peak Hour	09:00	07:00	10:00	07:00	11:00	08:00								08:00		
Volume	3	2	3	1	1	1								6		
PM Volumes	11	10	14	13	3	1	0	0	0	0	0	0	0	52		
% PM	14%	12%	17%	16%	4%	1%								64%		
PM Peak Hour	16:00	17:00	16:00	18:00	12:00	17:00								17:00		
Volume	3	3	4	3	1	1								10		
Directional Peak Periods		AM 7-9				NOON 12-2				PM 4-6				Off Peak Volumes		
All Speeds		Volume	↔		%	Volume	↔		%	Volume	↔		%	Volume	↔	
		11			14%	4			5%	18			22%	48		

Direction	Percentiles					
	15th	50th	Average	85th	95th	ADT
	11	21	20	28	34	81
Summary	Pace					
	10mph Pace	# in Pace	% in Pace	Number of Vehicles >= 25 MPH	% of Vehicles >= 25 MPH	
	15 - 24	37	45.68%	23	28.40%	

SPEED

4193 SW Muncie St

Day: Wednesday
Date: 4/7/2021

City: Port St. Lucie
Project #: FL21_140076_016

Summary

Time	< 15	15 - 19	20 - 24	25 - 29	30 - 34	35 - 39	40 - 44	45 - 49	50 - 54	55 - 59	60 - 64	65 - 69	70 +	Total
00:00 AM	0	0	0	3	0	0	0	0	0	0	0	0	0	3
01:00	0	0	0	1	0	0	0	0	0	0	0	0	0	1
02:00	0	0	0	0	0	1	0	0	0	0	0	0	0	1
03:00	0	0	0	0	0	0	0	0	0	0	0	0	0	0
04:00	0	0	0	3	0	0	0	0	0	0	0	0	0	3
05:00	0	2	1	4	0	0	0	0	0	0	0	0	0	7
06:00	0	0	4	7	2	0	0	0	0	0	0	0	0	13
07:00	0	0	4	8	4	4	0	0	0	0	0	0	0	20
08:00	0	2	6	11	6	1	0	0	0	0	0	0	0	26
09:00	2	0	2	2	0	0	0	0	0	0	0	0	0	6
10:00	0	2	2	0	1	2	0	0	0	0	0	0	0	7
11:00	2	1	3	4	5	1	1	0	0	0	0	0	0	17
12:00 PM	2	2	8	13	3	0	0	0	0	0	0	0	0	28
13:00	1	0	4	11	3	0	1	0	0	0	0	0	0	20
14:00	5	4	1	8	3	1	0	0	0	0	0	0	0	22
15:00	0	0	6	9	6	2	0	0	0	0	0	0	0	23
16:00	1	2	9	13	5	2	0	0	0	0	0	0	0	32
17:00	0	1	4	9	6	2	2	0	0	0	0	0	0	24
18:00	0	1	6	5	7	1	0	0	0	0	0	0	0	20
19:00	0	4	4	10	4	1	0	0	0	0	0	0	0	23
20:00	1	2	3	2	2	3	0	0	0	0	0	0	0	13
21:00	2	2	2	3	2	0	0	0	0	0	0	0	0	11
22:00	0	0	3	0	0	1	0	0	0	0	0	0	0	4
23:00	0	1	0	2	0	0	0	0	0	0	0	0	0	3
Totals	16	26	72	128	59	22	4							327
% of Totals	5%	8%	22%	39%	18%	7%	1%							100%

AM Volumes	4	7	22	43	18	9	1	0	0	0	0	0	0	104			
% AM	1%	2%	7%	13%	6%	3%	0%							32%			
AM Peak Hour	09:00	05:00	08:00	08:00	08:00	07:00	11:00							08:00			
Volume	2	2	6	11	6	4	1							26			
PM Volumes	12	19	50	85	41	13	3	0	0	0	0	0	0	223			
% PM	4%	6%	15%	26%	13%	4%	1%							68%			
PM Peak Hour	14:00	14:00	16:00	12:00	18:00	20:00	17:00							16:00			
Volume	5	4	9	13	7	3	2							32			
Directional Peak Periods		AM 7-9				NOON 12-2			PM 4-6			Off Peak Volumes					
All Speeds		Volume	↔		%	Volume	↔		%	Volume	↔		%	Volume	↔		%
		46			14%	48			15%	56			17%	177			54%

Direction	Percentiles					
	15th	50th	Average	85th	95th	ADT
	20	27	27	33	37	327
Summary	Pace					
	10mph Pace	# in Pace	% in Pace	Number of Vehicles >= 25 MPH	% of Vehicles >= 25 MPH	
	20 - 29	200	61.16%	213	65.14%	

SPEED

126 SW Fairchild Ave

Day: Wednesday
Date: 4/7/2021

City: Port St. Lucie
Project #: FL21_140076_026

Summary

Time	< 15	15 - 19	20 - 24	25 - 29	30 - 34	35 - 39	40 - 44	45 - 49	50 - 54	55 - 59	60 - 64	65 - 69	70 +	Total
00:00 AM	0	0	0	0	0	0	0	0	0	0	0	0	0	0
01:00	0	0	0	0	0	0	0	0	0	0	0	0	0	0
02:00	0	0	0	0	0	0	0	0	0	0	0	0	0	0
03:00	0	0	0	0	0	0	0	0	0	0	0	0	0	0
04:00	0	0	1	0	0	0	0	0	0	0	0	0	0	1
05:00	0	0	0	0	0	0	0	0	0	0	0	0	0	0
06:00	2	2	1	1	0	0	0	0	0	0	0	0	0	6
07:00	1	3	5	1	0	0	0	0	0	0	0	0	0	10
08:00	0	2	5	0	0	1	0	0	0	0	0	0	0	8
09:00	1	5	2	2	0	0	0	0	0	0	0	0	0	10
10:00	1	1	2	1	1	0	0	0	0	0	0	0	0	6
11:00	0	4	4	0	0	1	0	0	0	0	0	0	0	9
12:00 PM	2	2	4	0	0	0	0	0	0	0	0	0	0	8
13:00	4	3	1	0	0	0	0	0	0	0	0	0	0	8
14:00	3	1	5	0	0	0	0	0	0	0	0	0	0	9
15:00	2	5	9	2	0	0	0	0	0	0	0	0	0	18
16:00	1	6	7	1	1	0	2	2	0	0	0	0	0	20
17:00	3	4	6	3	0	0	0	0	0	0	0	0	0	16
18:00	0	4	0	2	0	0	0	0	0	0	0	0	0	6
19:00	3	3	7	0	1	0	0	0	0	0	0	0	0	14
20:00	1	1	5	4	0	0	0	0	0	0	0	0	0	11
21:00	1	2	1	1	0	0	0	0	0	0	0	0	0	5
22:00	0	3	0	1	0	0	0	0	0	0	0	0	0	4
23:00	0	1	0	1	0	0	0	0	0	0	0	0	0	2
Totals	25	52	65	20	3	2	2	2						171
% of Totals	15%	30%	38%	12%	2%	1%	1%	1%						100%

AM Volumes	5	17	20	5	1	2	0	0	0	0	0	0	0	50
% AM	3%	10%	12%	3%	1%	1%								29%
AM Peak Hour	06:00	09:00	07:00	09:00	10:00	08:00								07:00
Volume	2	5	5	2	1	1								10
PM Volumes	20	35	45	15	2	0	2	2	0	0	0	0	0	121
% PM	12%	20%	26%	9%	1%		1%	1%						71%
PM Peak Hour	13:00	16:00	15:00	20:00	16:00		16:00	16:00						16:00
Volume	4	6	9	4	1		2	2						20
Directional Peak Periods		AM 7-9				NOON 12-2			PM 4-6			Off Peak Volumes		
All Speeds		Volume		%	Volume		%	Volume		%	Volume		%	
		18	↔	11%	16	↔	9%	36	↔	21%	101	↔	59%	

Direction	Percentiles					
	15th	50th	Average	85th	95th	ADT
	15	21	21	26	31	171
Summary	Pace					
	10mph Pace	# in Pace	% in Pace	Number of Vehicles >= 25 MPH	% of Vehicles >= 25 MPH	
	15 - 24	117	68.42%	29	16.96%	

SPEED

2398 SE Wald St

Day: Wednesday
Date: 4/7/2021

City: Port St. Lucie
Project #: FL21_140076_027

Summary

Time	< 15	15 - 19	20 - 24	25 - 29	30 - 34	35 - 39	40 - 44	45 - 49	50 - 54	55 - 59	60 - 64	65 - 69	70 +	Total
00:00 AM	0	0	0	0	0	0	0	0	0	0	0	0	0	0
01:00	0	0	0	0	0	0	0	0	0	0	0	0	0	0
02:00	0	0	0	0	0	0	0	0	0	0	0	0	0	0
03:00	0	0	0	1	0	0	0	0	0	0	0	0	0	1
04:00	0	0	0	1	0	0	0	0	0	0	0	0	0	1
05:00	0	0	0	1	1	0	0	0	0	0	0	0	0	2
06:00	0	1	5	4	1	1	0	0	0	0	0	0	0	12
07:00	0	0	2	7	6	0	1	0	0	0	0	0	0	16
08:00	3	0	3	4	5	2	1	0	0	0	0	0	0	18
09:00	0	1	2	6	5	0	0	0	0	0	0	0	0	14
10:00	1	0	3	2	1	1	0	0	0	0	0	0	0	8
11:00	2	2	5	2	2	1	0	0	0	0	0	0	0	14
12:00 PM	4	1	8	6	2	0	0	0	0	0	0	0	0	21
13:00	0	0	4	6	4	2	0	0	0	0	0	0	0	16
14:00	2	1	5	6	6	2	0	0	0	0	0	0	0	22
15:00	1	4	7	6	5	2	0	0	0	0	0	0	0	25
16:00	1	1	4	9	9	0	1	0	0	0	0	0	0	25
17:00	2	0	5	10	10	7	0	0	0	0	0	0	0	34
18:00	2	1	3	6	2	0	1	0	0	0	0	0	0	15
19:00	0	3	3	5	2	0	0	0	0	0	0	0	0	13
20:00	2	0	2	2	0	2	0	0	0	0	0	0	0	8
21:00	0	2	3	3	0	1	0	0	0	0	0	0	0	9
22:00	0	0	0	1	4	0	1	0	0	0	0	0	0	6
23:00	2	0	0	0	1	0	0	0	0	0	0	0	0	3
Totals	22	17	64	88	66	21	5							283
% of Totals	8%	6%	23%	31%	23%	7%	2%							100%

AM Volumes	6	4	20	28	21	5	2	0	0	0	0	0	0	86
% AM	2%	1%	7%	10%	7%	2%	1%							30%
AM Peak Hour	08:00	11:00	06:00	07:00	07:00	08:00	07:00							08:00
Volume	3	2	5	7	6	2	1							18
PM Volumes	16	13	44	60	45	16	3	0	0	0	0	0	0	197
% PM	6%	5%	16%	21%	16%	6%	1%							70%
PM Peak Hour	12:00	15:00	12:00	17:00	17:00	17:00	16:00							17:00
Volume	4	4	8	10	10	7	1							34
Directional Peak Periods		AM 7-9				NOON 12-2			PM 4-6			Off Peak Volumes		
All Speeds		Volume	%		Volume	%		Volume	%		Volume	%		
		34	12%		37	13%		59	21%		153	54%		

Direction	Percentiles					
	15th	50th	Average	85th	95th	ADT
	20	27	27	34	38	283
Summary	Pace					
	10mph Pace	# in Pace	% in Pace	Number of Vehicles >= 25 MPH	% of Vehicles >= 25 MPH	
	25 - 34	154	54.42%	180	63.60%	

SPEED

610 SW Bacon Terr

Day: Wednesday
Date: 4/7/2021

City: Port St. Lucie
Project #: FL21_140076_020

Summary

Time	< 15	15 - 19	20 - 24	25 - 29	30 - 34	35 - 39	40 - 44	45 - 49	50 - 54	55 - 59	60 - 64	65 - 69	70 +	Total
00:00 AM	0	0	0	0	0	0	0	0	0	0	0	0	0	0
01:00	0	1	0	0	0	0	0	0	0	0	0	0	0	1
02:00	0	0	1	0	0	0	0	0	0	0	0	0	0	1
03:00	0	0	0	0	0	0	0	0	0	0	0	0	0	0
04:00	0	0	0	2	0	0	0	0	0	0	0	0	0	2
05:00	0	0	2	1	0	0	0	0	0	0	0	0	0	3
06:00	1	2	1	2	0	0	0	0	0	0	0	0	0	6
07:00	0	2	2	2	4	0	0	0	0	0	0	0	0	10
08:00	1	2	5	2	1	0	0	0	0	0	0	0	0	11
09:00	0	0	2	4	1	1	0	0	0	0	0	0	0	8
10:00	0	0	2	3	2	0	0	0	0	0	0	0	0	7
11:00	1	1	1	0	1	1	0	0	0	0	0	0	0	5
12:00 PM	1	0	5	5	0	1	0	0	0	0	0	0	0	12
13:00	3	3	4	1	2	0	0	0	0	0	0	0	0	13
14:00	2	2	5	2	2	0	0	0	0	0	0	0	0	13
15:00	2	5	3	9	4	1	0	0	0	0	0	0	0	24
16:00	4	0	3	3	1	1	0	0	0	0	0	0	0	12
17:00	2	0	0	3	1	1	0	0	0	0	0	0	0	7
18:00	1	3	0	2	2	1	0	0	0	0	0	0	0	9
19:00	1	3	1	2	0	1	0	0	0	0	0	0	0	8
20:00	0	2	1	1	0	0	0	0	0	0	0	0	0	4
21:00	2	2	3	0	0	0	0	0	0	0	0	0	0	7
22:00	1	1	0	0	0	2	0	0	0	0	0	0	0	4
23:00	0	2	0	0	0	1	0	0	0	0	0	0	0	3
Totals	22	31	41	44	21	11								170
% of Totals	13%	18%	24%	26%	12%	6%								100%

AM Volumes	3	8	16	16	9	2	0	0	0	0	0	0	0	54			
% AM	2%	5%	9%	9%	5%	1%								32%			
AM Peak Hour	06:00	06:00	08:00	09:00	07:00	09:00								08:00			
Volume	1	2	5	4	4	1								11			
PM Volumes	19	23	25	28	12	9	0	0	0	0	0	0	0	116			
% PM	11%	14%	15%	16%	7%	5%								68%			
PM Peak Hour	16:00	15:00	12:00	15:00	15:00	22:00								15:00			
Volume	4	5	5	9	4	2								24			
Directional Peak Periods		AM 7-9				NOON 12-2			PM 4-6			Off Peak Volumes					
All Speeds		Volume	↔		%	Volume	↔		%	Volume	↔		%	Volume	↔		%
		21			12%	25			15%	19			11%	105			62%

Direction	Percentiles					
	15th	50th	Average	85th	95th	ADT
	16	24	23	32	36	170
Summary	Pace					
	10mph Pace	# in Pace	% in Pace	Number of Vehicles >= 25 MPH	% of Vehicles >= 25 MPH	
	20 - 29	85	50.00%	76	44.71%	

SPEED

628 SW Estate Ave

Day: Wednesday
Date: 4/7/2021

City: Port St. Lucie
Project #: FL21_140076_012

Summary

Time	< 15	15 - 19	20 - 24	25 - 29	30 - 34	35 - 39	40 - 44	45 - 49	50 - 54	55 - 59	60 - 64	65 - 69	70 +	Total
00:00 AM	0	0	0	0	0	0	0	0	0	0	0	0	0	0
01:00	0	0	0	0	0	0	0	0	0	0	0	0	0	0
02:00	0	0	0	0	0	0	0	0	0	0	0	0	0	0
03:00	0	0	0	0	0	0	0	0	0	0	0	0	0	0
04:00	1	2	0	0	1	0	0	0	0	0	0	0	0	4
05:00	1	1	0	2	0	0	0	0	0	0	0	0	0	4
06:00	4	3	1	5	1	0	0	0	0	0	0	0	0	14
07:00	7	8	6	10	7	2	0	0	0	0	0	0	0	40
08:00	9	7	2	5	2	3	0	0	0	0	0	0	0	28
09:00	1	3	4	5	2	4	0	0	0	0	0	0	0	19
10:00	1	5	2	5	4	1	0	0	0	0	0	0	0	18
11:00	1	1	3	6	3	5	0	0	0	0	0	0	0	19
12:00 PM	2	9	3	9	0	0	0	0	0	0	0	0	0	23
13:00	3	7	0	6	2	2	0	0	0	0	0	0	0	20
14:00	1	9	3	3	7	0	1	0	1	0	0	0	0	25
15:00	6	5	3	7	4	3	1	0	0	0	0	0	0	29
16:00	9	7	4	5	3	1	0	0	0	0	0	0	0	29
17:00	5	12	6	6	6	1	1	0	0	0	0	0	0	37
18:00	1	2	2	4	2	3	0	0	0	0	0	0	0	14
19:00	5	5	8	3	1	1	0	0	0	0	0	0	0	23
20:00	3	3	4	4	2	2	0	0	0	0	0	0	0	18
21:00	2	1	3	6	4	2	0	0	1	0	0	0	0	19
22:00	0	0	0	1	3	1	0	0	0	0	0	0	0	5
23:00	1	0	0	2	0	0	0	0	0	0	0	0	0	3
Totals	63	90	54	94	54	31	3		2					391
% of Totals	16%	23%	14%	24%	14%	8%	1%		1%					100%

AM Volumes	25	30	18	38	20	15	0	0	0	0	0	0	0	146
% AM	6%	8%	5%	10%	5%	4%								37%
AM Peak Hour	08:00	07:00	07:00	07:00	07:00	11:00								07:00
Volume	9	8	6	10	7	5								40
PM Volumes	38	60	36	56	34	16	3	0	2	0	0	0	0	245
% PM	10%	15%	9%	14%	9%	4%	1%		1%					63%
PM Peak Hour	16:00	17:00	19:00	12:00	14:00	15:00	14:00		14:00					17:00
Volume	9	12	8	9	7	3	1		1					37
Directional Peak Periods		AM 7-9				NOON 12-2			PM 4-6			Off Peak Volumes		
All Speeds		Volume		%	Volume		%	Volume		%	Volume		%	
		68	↔	17%	43	↔	11%	66	↔	17%	214	↔	55%	

Direction	Percentiles					
	15th	50th	Average	85th	95th	ADT
	14	24	23	33	38	391
Summary	Pace					
	10mph Pace	# in Pace	% in Pace	Number of Vehicles >= 25 MPH	% of Vehicles >= 25 MPH	
	20 - 29	148	37.85%	184	47.06%	

SPEED

1702 SW Cordova St

Day: Wednesday
Date: 07/07/2021

City: Port Saint Lucie
Project #: FL21_130146_001

Summary

Time	< 15	15 - 19	20 - 24	25 - 29	30 - 34	35 - 39	40 - 44	45 - 49	50 - 54	55 - 59	60 - 64	65 - 69	70 +	Total
00:00 AM	0	0	0	0	0	0	0	0	0	0	0	0	0	0
01:00	0	0	1	0	0	0	0	0	0	0	0	0	0	1
02:00	0	0	0	1	0	0	0	0	0	0	0	0	0	1
03:00	0	0	0	0	0	0	0	0	0	0	0	0	0	0
04:00	0	0	0	0	0	0	0	0	0	0	0	0	0	0
05:00	0	0	0	2	0	4	0	1	0	0	0	0	0	7
06:00	0	0	0	4	4	1	0	0	0	0	0	0	0	9
07:00	0	0	2	9	6	1	1	0	0	0	0	0	0	19
08:00	1	0	4	7	3	1	0	0	0	0	0	0	0	16
09:00	0	1	2	3	1	6	0	0	0	0	0	0	0	13
10:00	6	2	5	4	0	0	0	0	0	0	0	0	0	17
11:00	1	3	5	6	3	0	0	0	0	0	0	0	0	18
12:00 PM	1	5	1	2	1	4	0	0	0	0	0	0	0	14
13:00	1	2	1	4	8	1	0	0	0	0	0	0	0	17
14:00	1	1	3	1	4	1	1	1	0	0	0	0	0	13
15:00	0	1	2	3	3	1	0	0	0	0	0	0	0	10
16:00	2	2	6	1	1	1	0	0	0	0	0	0	0	13
17:00	1	2	3	7	9	2	0	0	0	0	0	0	0	24
18:00	0	2	4	3	6	8	1	0	0	0	0	0	0	24
19:00	0	1	6	2	5	1	0	0	0	0	0	0	0	15
20:00	0	3	1	1	0	3	0	1	0	0	0	0	0	9
21:00	0	2	0	2	1	1	1	0	0	0	0	0	0	7
22:00	0	0	0	1	1	0	0	0	0	0	0	0	0	2
23:00	0	0	0	1	1	0	0	0	0	0	0	0	0	2
Totals	14	27	46	64	57	36	4	3						251
% of Totals	6%	11%	18%	25%	23%	14%	2%	1%						100%

AM Volumes	8	6	19	36	17	13	1	1	0	0	0	0	0	101
% AM	3%	2%	8%	14%	7%	5%	0%	0%						40%
AM Peak Hour	10:00	11:00	10:00	07:00	07:00	09:00	07:00	05:00						07:00
Volume	6	3	5	9	6	6	1	1						19
PM Volumes	6	21	27	28	40	23	3	2	0	0	0	0	0	150
% PM	2%	8%	11%	11%	16%	9%	1%	1%						60%
PM Peak Hour	16:00	12:00	16:00	17:00	17:00	18:00	14:00	14:00						17:00
Volume	2	5	6	7	9	8	1	1						24

Directional Peak Periods All Speeds	AM 7-9		NOON 12-2		PM 4-6		Off Peak Volumes	
	Volume	%	Volume	%	Volume	%	Volume	%
	35	↔ 14%	31	↔ 12%	37	↔ 15%	148	↔ 59%

Direction	Percentiles					
	15th	50th	Average	85th	95th	ADT
	19	28	28	36	39	251
Summary	Pace					
	10mph Pace	# in Pace	% in Pace	Number of Vehicles >= 25 MPH	% of Vehicles >= 25 MPH	
	25 - 34	121	48.21%	164	65.34%	

SPEED

2592 SW Fairgreen Rd

Day: Wednesday
Date: 7/7/2021

City: Port Saint Lucie
Project #: FL21_130146_002

Summary

Time	< 15	15 - 19	20 - 24	25 - 29	30 - 34	35 - 39	40 - 44	45 - 49	50 - 54	55 - 59	60 - 64	65 - 69	70 +	Total
00:00 AM	0	4	0	3	1	1	0	0	0	0	0	0	0	9
01:00	0	0	0	1	5	0	0	0	0	0	0	0	0	6
02:00	0	0	0	2	0	0	0	0	0	0	0	0	0	2
03:00	0	1	0	1	1	0	0	0	0	0	0	0	0	3
04:00	0	0	0	2	4	0	0	0	0	0	0	0	0	6
05:00	1	4	2	7	5	2	0	0	0	0	0	0	0	21
06:00	2	7	6	19	10	5	1	0	0	0	0	0	0	50
07:00	5	17	13	25	19	3	0	0	0	0	0	0	0	82
08:00	3	19	12	29	25	6	0	0	0	0	0	0	0	94
09:00	1	12	27	33	15	4	1	0	0	0	0	0	0	93
10:00	9	9	22	23	11	2	0	0	0	0	0	0	0	76
11:00	6	16	27	32	8	2	0	0	0	0	0	0	0	91
12:00 PM	8	14	25	37	13	5	0	0	0	0	0	0	0	102
13:00	2	15	24	41	22	4	1	1	0	0	0	0	0	110
14:00	9	21	43	25	7	2	0	0	0	0	0	0	0	107
15:00	6	13	24	25	28	2	0	0	0	0	0	0	0	98
16:00	6	12	21	44	33	6	0	0	0	0	0	0	0	122
17:00	3	13	30	56	44	6	0	0	0	0	0	0	0	152
18:00	3	21	24	53	43	4	1	0	0	0	0	0	0	149
19:00	5	14	15	38	20	3	0	0	0	0	0	0	0	95
20:00	1	9	12	29	20	5	0	0	0	0	0	0	0	76
21:00	2	7	10	14	10	3	0	0	0	0	0	0	0	46
22:00	0	0	3	6	7	3	1	1	0	0	0	0	0	21
23:00	0	1	2	4	7	0	0	0	0	0	0	0	0	14
Totals	72	229	342	549	358	68	5	2						1625
% of Totals	4%	14%	21%	34%	22%	4%	0%	0%						100%

AM Volumes	27	89	109	177	104	25	2	0	0	0	0	0	0	533
% AM	2%	5%	7%	11%	6%	2%	0%							33%
AM Peak Hour	10:00	08:00	09:00	09:00	08:00	08:00	06:00							08:00
Volume	9	19	27	33	25	6	1							94
PM Volumes	45	140	233	372	254	43	3	2	0	0	0	0	0	1092
% PM	3%	9%	14%	23%	16%	3%	0%	0%						67%
PM Peak Hour	14:00	14:00	14:00	17:00	17:00	16:00	13:00	13:00						17:00
Volume	9	21	43	56	44	6	1	1						152

Directional Peak Periods All Speeds	AM 7-9		NOON 12-2		PM 4-6		Off Peak Volumes	
	Volume	%	Volume	%	Volume	%	Volume	%
	176	↔ 11%	212	↔ 13%	274	↔ 17%	963	↔ 59%

Direction	Percentiles					
	15th	50th	Average	85th	95th	ADT
	19	27	26	33	35	1625
Summary	Pace					
	10mph Pace	# in Pace	% in Pace	Number of Vehicles >= 25 MPH	% of Vehicles >= 25 MPH	
	25 - 34	907	55.82%	982	60.43%	

SPEED

2732 SW Altamira Ave

Day: Wednesday
Date: 7/7/2021

City: Port Saint Lucie
Project #: FL21_130146_003

Summary

Time	< 15	15 - 19	20 - 24	25 - 29	30 - 34	35 - 39	40 - 44	45 - 49	50 - 54	55 - 59	60 - 64	65 - 69	70 +	Total
00:00 AM	0	0	0	0	0	0	0	0	0	0	0	0	0	0
01:00	0	0	0	0	1	0	0	0	0	0	0	0	0	1
02:00	0	0	1	0	0	1	0	0	0	0	0	0	0	2
03:00	0	0	0	0	0	0	0	0	0	0	0	0	0	0
04:00	0	0	0	1	0	0	0	0	0	0	0	0	0	1
05:00	0	1	0	1	2	0	0	0	0	0	0	0	0	4
06:00	0	0	0	1	0	0	2	0	0	0	0	0	0	3
07:00	0	0	1	2	3	1	0	0	0	0	0	0	0	7
08:00	1	2	1	2	1	1	0	0	0	0	0	0	0	8
09:00	2	0	1	4	0	0	0	0	0	0	0	0	0	7
10:00	0	0	2	1	2	0	0	0	0	0	0	0	0	5
11:00	2	0	0	1	2	0	2	0	0	0	0	0	0	7
12:00 PM	0	2	2	1	1	0	1	0	0	0	0	0	0	7
13:00	1	2	2	1	2	1	0	0	0	0	0	0	0	9
14:00	1	1	1	7	1	1	1	0	0	0	0	0	0	13
15:00	2	1	2	5	1	0	1	0	0	0	0	0	0	12
16:00	0	1	1	1	0	2	1	0	0	0	0	0	0	6
17:00	0	1	2	3	4	0	1	0	0	0	0	0	0	11
18:00	1	1	3	1	2	0	0	0	0	0	0	0	0	8
19:00	1	3	4	2	0	0	0	0	0	0	0	0	0	10
20:00	0	2	2	2	1	0	0	0	0	0	0	0	0	7
21:00	1	2	1	1	2	0	0	0	0	0	0	0	0	7
22:00	0	0	0	0	0	0	0	0	0	0	0	0	0	0
23:00	0	0	0	0	0	0	0	0	0	0	0	0	0	0
Totals	12	19	26	37	25	7	9							135
% of Totals	9%	14%	19%	27%	19%	5%	7%							100%

AM Volumes	5	3	6	13	11	3	4	0	0	0	0	0	0	45
% AM	4%	2%	4%	10%	8%	2%	3%							33%
AM Peak Hour	09:00	08:00	10:00	09:00	07:00	02:00	06:00							08:00
Volume	2	2	2	4	3	1	2							8
PM Volumes	7	16	20	24	14	4	5	0	0	0	0	0	0	90
% PM	5%	12%	15%	18%	10%	3%	4%							67%
PM Peak Hour	15:00	19:00	19:00	14:00	17:00	16:00	12:00							14:00
Volume	2	3	4	7	4	2	1							13

Directional Peak Periods All Speeds	AM 7-9		NOON 12-2		PM 4-6		Off Peak Volumes	
	Volume	%	Volume	%	Volume	%	Volume	%
	15	↔ 11%	16	↔ 12%	17	↔ 13%	87	↔ 64%

Direction	Percentiles					
	15th	50th	Average	85th	95th	ADT
	17	26	26	34	41	135
Summary	Pace					
	10mph Pace	# in Pace	% in Pace	Number of Vehicles >= 25 MPH	% of Vehicles >= 25 MPH	
	20 - 29	63	46.67%	78	57.78%	

SPEED

744 SE Lansdowne Ave

Day: Wednesday
Date: 4/7/2021

City: Port St. Lucie
Project #: FL21_140076_031

Summary

Time	< 15	15 - 19	20 - 24	25 - 29	30 - 34	35 - 39	40 - 44	45 - 49	50 - 54	55 - 59	60 - 64	65 - 69	70 +	Total
00:00 AM	0	0	0	0	0	0	0	0	0	0	0	0	0	0
01:00	0	0	0	0	0	0	0	0	0	0	0	0	0	0
02:00	0	0	0	0	0	0	0	0	0	0	0	0	0	0
03:00	0	0	1	0	0	0	0	0	0	0	0	0	0	1
04:00	0	0	0	0	0	0	0	0	0	0	0	0	0	0
05:00	0	0	0	0	0	0	0	0	0	0	0	0	0	0
06:00	1	1	3	2	1	0	1	0	0	0	0	0	0	9
07:00	2	1	1	1	3	1	0	0	0	0	0	0	0	9
08:00	1	0	1	0	2	1	0	0	0	0	0	0	0	5
09:00	0	0	2	0	0	0	0	0	0	0	0	0	0	2
10:00	1	2	0	1	0	0	0	0	0	0	0	0	0	4
11:00	2	6	4	0	2	0	0	0	0	0	0	0	0	14
12:00 PM	1	2	4	2	1	0	0	0	0	0	0	0	0	10
13:00	0	0	4	1	0	1	0	0	0	0	0	0	0	6
14:00	2	1	2	1	1	2	1	0	0	0	0	0	0	10
15:00	1	1	5	1	0	0	1	0	0	0	0	0	0	9
16:00	0	1	6	3	1	0	1	0	0	0	0	0	0	12
17:00	0	3	3	3	1	3	1	0	0	0	0	0	0	14
18:00	0	4	1	2	1	2	0	0	0	0	0	0	0	10
19:00	2	3	2	2	0	1	0	0	0	0	0	0	0	10
20:00	0	2	3	0	0	0	0	0	0	0	0	0	0	5
21:00	0	1	1	0	1	1	0	0	0	0	0	0	0	4
22:00	0	0	1	0	0	0	0	0	0	0	0	0	0	1
23:00	0	0	0	0	0	0	0	0	0	0	0	0	0	0
Totals	13	28	44	19	14	12	5							135
% of Totals	10%	21%	33%	14%	10%	9%	4%							100%

AM Volumes	7	10	12	4	8	2	1	0	0	0	0	0	0	44			
% AM	5%	7%	9%	3%	6%	1%	1%							33%			
AM Peak Hour	07:00	11:00	11:00	06:00	07:00	07:00	06:00							11:00			
Volume	2	6	4	2	3	1	1							14			
PM Volumes	6	18	32	15	6	10	4	0	0	0	0	0	0	91			
% PM	4%	13%	24%	11%	4%	7%	3%							67%			
PM Peak Hour	14:00	18:00	16:00	16:00	12:00	17:00	14:00							17:00			
Volume	2	4	6	3	1	3	1							14			
Directional Peak Periods		AM 7-9				NOON 12-2			PM 4-6			Off Peak Volumes					
All Speeds		Volume	↔		%	Volume	↔		%	Volume	↔		%	Volume	↔		%
		14			10%	16			12%	26			19%	79			59%

Direction	Percentiles					
	15th	50th	Average	85th	95th	ADT
	16	23	24	34	39	135
Summary	Pace					
	10mph Pace	# in Pace	% in Pace	Number of Vehicles >= 25 MPH	% of Vehicles >= 25 MPH	
	15 - 24	72	53.33%	50	37.04%	

SPEED

902 SE O'Donnell Ln

Day: Wednesday
Date: 4/7/2021

City: Port St. Lucie
Project #: FL21_140076_030

Summary

Time	< 15	15 - 19	20 - 24	25 - 29	30 - 34	35 - 39	40 - 44	45 - 49	50 - 54	55 - 59	60 - 64	65 - 69	70 +	Total
00:00 AM	0	0	0	0	0	0	0	0	0	0	0	0	0	0
01:00	0	0	0	0	0	0	0	0	0	0	0	0	0	0
02:00	0	0	1	0	0	0	0	0	0	0	0	0	0	1
03:00	0	0	0	0	1	0	0	0	0	0	0	0	0	1
04:00	0	0	0	0	0	0	0	0	0	0	0	0	0	0
05:00	0	0	1	2	0	0	0	0	0	0	0	0	0	3
06:00	1	1	1	2	1	0	0	0	0	0	0	0	0	6
07:00	1	2	2	2	1	1	0	0	0	0	0	0	0	9
08:00	0	1	1	3	2	0	0	0	0	0	0	0	0	7
09:00	0	1	1	3	1	0	0	0	0	0	0	0	0	6
10:00	0	0	0	2	2	0	0	0	0	0	0	0	0	4
11:00	1	1	1	3	2	0	0	0	0	0	0	0	0	8
12:00 PM	0	1	3	3	1	0	0	0	0	0	0	0	0	8
13:00	1	3	4	0	1	0	0	0	0	0	0	0	0	9
14:00	0	0	3	2	2	0	0	0	0	0	0	0	0	7
15:00	1	1	4	4	0	2	0	0	0	0	0	0	0	12
16:00	2	3	4	3	2	1	0	0	0	0	0	0	0	15
17:00	0	5	3	3	4	0	0	0	0	0	0	0	0	15
18:00	0	2	3	6	2	0	0	0	0	0	0	0	0	13
19:00	0	1	1	4	0	0	0	0	0	0	0	0	0	6
20:00	0	1	5	2	1	0	0	0	0	0	0	0	0	9
21:00	0	0	0	0	1	0	0	0	0	0	0	0	0	1
22:00	0	0	0	1	0	0	0	0	0	0	0	0	0	1
23:00	1	1	0	1	0	0	0	0	0	0	0	0	0	3
Totals	8	24	38	46	24	4								144
% of Totals	6%	17%	26%	32%	17%	3%								100%

AM Volumes	3	6	8	17	10	1	0	0	0	0	0	0	0	45		
% AM	2%	4%	6%	12%	7%	1%								31%		
AM Peak Hour	06:00	07:00	07:00	08:00	08:00	07:00								07:00		
Volume	1	2	2	3	2	1								9		
PM Volumes	5	18	30	29	14	3	0	0	0	0	0	0	0	99		
% PM	3%	13%	21%	20%	10%	2%								69%		
PM Peak Hour	16:00	17:00	20:00	18:00	17:00	15:00								16:00		
Volume	2	5	5	6	4	2								15		
Directional Peak Periods		AM 7-9				NOON 12-2				PM 4-6				Off Peak Volumes		
All Speeds		Volume	%		Volume	%		Volume	%		Volume	%		Volume	%	
		16	↔	11%	17	↔	12%	30	↔	21%	81	↔	56%			

Direction	Percentiles					
	15th	50th	Average	85th	95th	ADT
	18	25	25	31	34	144
Summary	Pace					
	10mph Pace	# in Pace	% in Pace	Number of Vehicles >= 25 MPH	% of Vehicles >= 25 MPH	
	20 - 29	84	58.33%	74	51.39%	

SPEED

971 SW Versailles Ave

Day: Wednesday
Date: 4/7/2021

City: Port St. Lucie
Project #: FL21_140076_008

Summary

Time	< 15	15 - 19	20 - 24	25 - 29	30 - 34	35 - 39	40 - 44	45 - 49	50 - 54	55 - 59	60 - 64	65 - 69	70 +	Total
00:00 AM	0	0	0	0	0	0	0	0	0	0	0	0	0	0
01:00	0	0	0	0	0	0	0	0	0	0	0	0	0	0
02:00	0	0	0	0	0	0	0	0	0	0	0	0	0	0
03:00	0	1	0	0	0	0	0	0	0	0	0	0	0	1
04:00	1	1	0	0	0	0	0	0	0	0	0	0	0	2
05:00	0	1	0	0	0	0	0	0	0	0	0	0	0	1
06:00	0	2	1	1	1	1	0	1	1	0	0	0	0	7
07:00	0	3	6	2	1	0	0	0	0	0	0	0	0	12
08:00	1	8	6	3	2	0	0	0	0	0	0	0	0	20
09:00	2	4	3	2	2	1	0	0	0	0	0	0	0	14
10:00	2	2	3	2	0	0	0	0	0	0	0	0	0	9
11:00	1	2	2	0	0	0	0	0	0	0	0	0	0	5
12:00 PM	0	1	2	6	3	0	0	0	0	0	0	0	0	12
13:00	3	0	4	0	3	1	0	0	0	0	0	0	0	11
14:00	2	5	3	2	3	0	0	0	0	0	0	0	0	15
15:00	2	0	4	3	1	1	0	0	0	0	0	0	0	11
16:00	1	3	4	4	1	0	0	0	0	0	0	0	0	13
17:00	0	2	5	3	0	0	0	0	0	0	0	0	0	10
18:00	1	3	5	5	3	0	0	0	0	0	0	0	0	17
19:00	2	5	3	0	1	0	0	0	0	0	0	0	0	11
20:00	0	0	6	2	0	0	0	0	0	0	0	0	0	8
21:00	0	0	1	4	0	0	0	0	0	0	0	0	0	5
22:00	1	1	0	2	0	0	0	0	0	0	0	0	0	4
23:00	2	0	0	1	0	0	0	0	0	0	0	0	0	3
Totals	21	44	58	42	21	3	1	1						191
% of Totals	11%	23%	30%	22%	11%	2%	1%	1%						100%

AM Volumes	7	24	21	10	6	1	1	1	0	0	0	0	0	71			
% AM	4%	13%	11%	5%	3%	1%	1%	1%						37%			
AM Peak Hour	09:00	08:00	07:00	08:00	08:00	09:00	06:00	06:00						08:00			
Volume	2	8	6	3	2	1	1	1						20			
PM Volumes	14	20	37	32	15	2	0	0	0	0	0	0	0	120			
% PM	7%	10%	19%	17%	8%	1%								63%			
PM Peak Hour	13:00	14:00	20:00	12:00	12:00	13:00								18:00			
Volume	3	5	6	6	3	1								17			
Directional Peak Periods		AM 7-9				NOON 12-2			PM 4-6			Off Peak Volumes					
All Speeds		Volume	↔		%	Volume	↔		%	Volume	↔		%	Volume	↔		%
		32			17%	23			12%	23			12%	113			59%

Direction	Percentiles					
	15th	50th	Average	85th	95th	ADT
	16	23	23	30	34	191
Summary	Pace					
	10mph Pace	# in Pace	% in Pace	Number of Vehicles >= 25 MPH		% of Vehicles >= 25 MPH
	15 - 24	102	53.40%	68		35.60%

SPEED

2200 SW Tampico St

Day: Wednesday
Date: 4/7/2021

City: Port St. Lucie
Project #: FL21_140076_002

Summary

Time	< 15	15 - 19	20 - 24	25 - 29	30 - 34	35 - 39	40 - 44	45 - 49	50 - 54	55 - 59	60 - 64	65 - 69	70 +	Total
00:00 AM	0	0	1	0	0	0	0	0	0	0	0	0	0	1
01:00	1	0	0	0	1	0	0	0	0	0	0	0	0	2
02:00	0	0	0	0	0	0	0	0	0	0	0	0	0	0
03:00	0	0	0	1	0	0	0	0	0	0	0	0	0	1
04:00	0	1	1	1	0	0	0	0	0	0	0	0	0	3
05:00	0	1	2	3	2	0	1	0	0	0	0	0	0	9
06:00	2	4	8	7	4	2	0	0	0	0	0	0	0	27
07:00	2	2	14	20	18	3	0	0	0	0	0	0	0	59
08:00	0	1	13	14	10	3	1	0	0	0	0	0	0	42
09:00	0	2	9	18	9	0	0	0	0	0	0	0	0	38
10:00	2	5	10	18	3	3	1	0	0	0	0	0	0	42
11:00	1	5	16	14	5	3	0	0	0	0	0	0	0	44
12:00 PM	0	5	14	16	9	4	1	0	0	0	0	0	0	49
13:00	0	3	8	16	14	0	0	1	0	0	0	0	0	42
14:00	3	3	17	21	13	3	1	0	0	0	0	0	0	61
15:00	1	3	12	19	7	2	0	0	0	0	0	0	0	44
16:00	2	3	20	12	23	1	0	0	0	0	0	0	0	61
17:00	0	10	21	25	11	4	0	0	0	0	0	0	0	71
18:00	0	6	14	16	11	3	0	0	0	0	0	0	0	50
19:00	2	6	11	10	4	3	0	0	0	0	0	0	0	36
20:00	0	4	6	15	12	4	0	0	0	0	0	0	0	41
21:00	0	0	5	8	3	1	0	0	0	0	0	0	0	17
22:00	0	0	4	4	7	0	2	1	0	0	0	0	0	18
23:00	0	1	2	3	2	0	1	0	0	0	0	0	0	9
Totals	16	65	208	261	168	39	8	2						767
% of Totals	2%	8%	27%	34%	22%	5%	1%	0%						100%

AM Volumes	8	21	74	96	52	14	3	0	0	0	0	0	0	268			
% AM	1%	3%	10%	13%	7%	2%	0%							35%			
AM Peak Hour	06:00	10:00	11:00	07:00	07:00	07:00	05:00							07:00			
Volume	2	5	16	20	18	3	1							59			
PM Volumes	8	44	134	165	116	25	5	2	0	0	0	0	0	499			
% PM	1%	6%	17%	22%	15%	3%	1%	0%						65%			
PM Peak Hour	14:00	17:00	17:00	17:00	16:00	12:00	22:00	13:00						17:00			
Volume	3	10	21	25	23	4	2	1						71			
Directional Peak Periods		AM 7-9				NOON 12-2			PM 4-6			Off Peak Volumes					
All Speeds		Volume	↔		%	Volume	↔		%	Volume	↔		%	Volume	↔		%
		101			13%	91			12%	132			17%	443			58%

Direction	Percentiles					
	15th	50th	Average	85th	95th	ADT
	21	27	27	33	36	767
Summary	Pace					
	10mph Pace	# in Pace	% in Pace	Number of Vehicles >= 25 MPH	% of Vehicles >= 25 MPH	
	20 - 29	469	61.15%	478	62.32%	

SPEED

1074 SW Aviation Ave

Day: Wednesday
Date: 4/7/2021

City: Port St. Lucie
Project #: FL21_140076_003

Summary

Time	< 15	15 - 19	20 - 24	25 - 29	30 - 34	35 - 39	40 - 44	45 - 49	50 - 54	55 - 59	60 - 64	65 - 69	70 +	Total
00:00 AM	0	1	0	2	0	0	0	0	0	0	0	0	0	3
01:00	0	1	0	0	0	0	0	0	0	0	0	0	0	1
02:00	0	0	0	1	0	0	0	0	0	0	0	0	0	1
03:00	0	1	0	0	0	0	0	0	0	0	0	0	0	1
04:00	1	0	1	1	0	0	0	0	0	0	0	0	0	3
05:00	0	2	2	1	0	0	0	0	0	0	0	0	0	5
06:00	3	14	7	6	1	0	0	0	0	0	0	0	0	31
07:00	2	12	11	8	2	0	0	0	0	0	0	0	0	35
08:00	2	8	16	10	4	2	0	0	0	0	0	0	0	42
09:00	2	5	10	4	0	1	0	0	0	0	0	0	0	22
10:00	0	3	11	3	0	1	0	0	0	0	0	0	0	18
11:00	2	7	10	12	5	0	0	0	0	0	0	0	0	36
12:00 PM	1	4	15	10	4	3	0	0	0	0	0	0	0	37
13:00	0	5	16	14	0	0	1	0	0	0	0	0	0	36
14:00	2	10	20	18	3	0	0	0	0	0	0	0	0	53
15:00	1	13	18	17	1	1	0	0	0	0	0	0	0	51
16:00	2	13	22	18	5	0	0	0	0	0	0	0	0	60
17:00	4	14	27	20	1	2	0	1	0	0	0	0	0	69
18:00	1	16	14	12	6	0	0	0	0	0	0	0	0	49
19:00	1	9	18	9	2	0	0	0	0	0	0	0	0	39
20:00	0	4	10	4	1	1	0	0	0	0	0	0	0	20
21:00	0	6	7	3	1	1	0	0	0	0	0	0	0	18
22:00	0	2	0	7	0	0	0	0	0	0	0	0	0	9
23:00	0	1	2	0	1	0	0	0	0	0	0	0	0	4
Totals	24	151	237	180	37	12	1	1						643
% of Totals	4%	23%	37%	28%	6%	2%	0%	0%						100%

AM Volumes	12	54	68	48	12	4	0	0	0	0	0	0	0	198			
% AM	2%	8%	11%	7%	2%	1%								31%			
AM Peak Hour	06:00	06:00	08:00	11:00	11:00	08:00								08:00			
Volume	3	14	16	12	5	2								42			
PM Volumes	12	97	169	132	25	8	1	1	0	0	0	0	0	445			
% PM	2%	15%	26%	21%	4%	1%	0%	0%						69%			
PM Peak Hour	17:00	18:00	17:00	17:00	18:00	12:00	13:00	17:00						17:00			
Volume	4	16	27	20	6	3	1	1						69			
Directional Peak Periods		AM 7-9				NOON 12-2			PM 4-6			Off Peak Volumes					
All Speeds		Volume	↔		%	Volume	↔		%	Volume	↔		%	Volume	↔		%
		77			12%	73			11%	129			20%	364			57%

Direction	Percentiles					
	15th	50th	Average	85th	95th	ADT
	17	23	23	29	33	643
Summary	Pace					
	10mph Pace	# in Pace	% in Pace	Number of Vehicles >= 25 MPH	% of Vehicles >= 25 MPH	
	20 - 29	417	64.85%	231	35.93%	

SPEED

2242 SE Shelter Dr

Day: Wednesday
Date: 4/21/2021

City: Port St. Lucie
Project #: FL21_140076_037

Summary

Time	< 15	15 - 19	20 - 24	25 - 29	30 - 34	35 - 39	40 - 44	45 - 49	50 - 54	55 - 59	60 - 64	65 - 69	70 +	Total
00:00 AM	0	0	0	0	2	1	0	0	0	0	0	0	0	3
01:00	0	0	0	0	0	0	0	0	0	0	0	0	0	0
02:00	0	0	0	0	1	1	0	0	0	0	0	0	0	2
03:00	0	0	0	0	0	0	0	0	0	0	0	0	0	0
04:00	0	0	0	0	0	1	0	0	0	0	0	0	0	1
05:00	1	0	0	0	1	2	0	0	0	0	0	0	0	4
06:00	1	0	3	6	6	1	1	0	0	0	0	0	0	18
07:00	0	0	2	8	6	4	0	0	0	0	0	0	0	20
08:00	3	1	3	1	6	4	1	0	0	0	0	0	0	19
09:00	1	3	3	4	6	1	0	0	0	0	0	0	0	18
10:00	0	1	2	3	1	2	0	0	0	0	0	0	0	9
11:00	1	1	3	4	6	4	1	0	0	0	0	0	0	20
12:00 PM	0	0	4	10	0	6	0	0	0	0	0	0	0	20
13:00	0	1	4	6	4	1	2	0	0	0	0	0	0	18
14:00	1	3	3	2	4	2	0	1	0	0	0	0	0	16
15:00	3	1	1	9	5	5	1	0	0	0	0	0	0	25
16:00	2	1	5	5	9	3	0	0	0	0	0	0	0	25
17:00	1	0	3	4	8	3	0	0	0	0	0	0	0	19
18:00	1	4	3	4	6	1	0	0	0	0	0	0	0	19
19:00	1	0	4	7	7	1	0	0	0	0	0	0	0	20
20:00	0	0	2	6	4	3	0	0	0	0	0	0	0	15
21:00	0	1	5	6	2	1	0	0	0	0	0	0	0	15
22:00	0	0	0	4	1	1	0	0	0	0	0	0	0	6
23:00	0	0	0	0	2	0	0	0	0	0	0	0	0	2
Totals	16	17	50	89	87	48	6	1						314
% of Totals	5%	5%	16%	28%	28%	15%	2%	0%						100%

AM Volumes	7	6	16	26	35	21	3	0	0	0	0	0	0	114			
% AM	2%	2%	5%	8%	11%	7%	1%							36%			
AM Peak Hour	08:00	09:00	06:00	07:00	06:00	07:00	06:00							07:00			
Volume	3	3	3	8	6	4	1							20			
PM Volumes	9	11	34	63	52	27	3	1	0	0	0	0	0	200			
% PM	3%	4%	11%	20%	17%	9%	1%	0%						64%			
PM Peak Hour	15:00	18:00	16:00	12:00	16:00	12:00	13:00	14:00						15:00			
Volume	3	4	5	10	9	6	2	1						25			
Directional Peak Periods		AM 7-9				NOON 12-2			PM 4-6			Off Peak Volumes					
All Speeds		Volume	↔		%	Volume	↔		%	Volume	↔		%	Volume	↔		%
		39			12%	38			12%	44			14%	193			61%

Direction	Percentiles					
	15th	50th	Average	85th	95th	ADT
	21	29	29	36	39	314
Summary	Pace					
	10mph Pace	# in Pace	% in Pace	Number of Vehicles >= 25 MPH	% of Vehicles >= 25 MPH	
	25 - 34	176	56.05%	231	73.57%	

SPEED

1717 SE Burgundy Ln

Day: Wednesday
Date: 4/14/2021

City: Port St. Lucie
Project #: FL21_140076_038

Summary

Time	< 15	15 - 19	20 - 24	25 - 29	30 - 34	35 - 39	40 - 44	45 - 49	50 - 54	55 - 59	60 - 64	65 - 69	70 +	Total
00:00 AM	0	1	0	0	0	0	0	0	0	0	0	0	0	1
01:00	0	0	0	0	0	0	0	0	0	0	0	0	0	0
02:00	0	0	0	0	0	0	0	0	0	0	0	0	0	0
03:00	0	0	1	0	0	0	0	0	0	0	0	0	0	1
04:00	0	0	0	0	0	0	0	0	0	0	0	0	0	0
05:00	1	2	1	0	0	0	0	0	0	0	0	0	0	4
06:00	1	1	0	2	0	0	0	0	0	0	0	0	0	4
07:00	1	3	2	1	2	0	0	0	0	0	0	0	0	9
08:00	3	2	2	2	0	0	0	0	0	0	0	0	0	9
09:00	1	2	1	1	0	0	0	0	0	0	0	0	0	5
10:00	1	2	5	0	0	0	0	0	0	0	0	0	0	8
11:00	1	3	4	0	0	0	0	0	0	0	0	0	0	8
12:00 PM	1	3	5	3	0	0	0	0	0	0	0	0	0	12
13:00	1	2	6	0	0	0	0	0	0	0	0	0	0	9
14:00	3	2	0	0	0	0	0	0	0	0	0	0	0	5
15:00	0	3	2	0	0	0	0	0	0	0	0	0	0	5
16:00	3	3	3	1	0	0	0	0	0	0	0	0	0	10
17:00	7	4	8	0	0	0	0	0	0	0	0	0	0	19
18:00	3	1	4	2	0	0	0	0	0	0	0	0	0	10
19:00	2	1	2	2	0	0	0	0	0	0	0	0	0	7
20:00	2	2	2	0	0	0	0	0	0	0	0	0	0	6
21:00	0	2	2	1	0	0	0	0	0	0	0	0	0	5
22:00	0	1	0	0	0	0	0	0	0	0	0	0	0	1
23:00	0	0	1	0	0	0	0	0	0	0	0	0	0	1
Totals	31	40	51	15	2									139
% of Totals	22%	29%	37%	11%	1%									100%

AM Volumes	9	16	16	6	2	0	0	0	0	0	0	0	0	49
% AM	6%	12%	12%	4%	1%									35%
AM Peak Hour	08:00	07:00	10:00	06:00	07:00									07:00
Volume	3	3	5	2	2									9
PM Volumes	22	24	35	9	0	0	0	0	0	0	0	0	0	90
% PM	16%	17%	25%	6%										65%
PM Peak Hour	17:00	17:00	17:00	12:00										17:00
Volume	7	4	8	3										19
Directional Peak Periods		AM 7-9			NOON 12-2			PM 4-6			Off Peak Volumes			
All Speeds		Volume		%	Volume		%	Volume		%	Volume		%	
		18	↔	13%	21	↔	15%	29	↔	21%	71	↔	51%	

Direction	Percentiles					
	15th	50th	Average	85th	95th	ADT
	12	20	19	25	28	139
Summary	Pace					
	10mph Pace	# in Pace	% in Pace	Number of Vehicles >= 25 MPH	% of Vehicles >= 25 MPH	
	15 - 24	91	65.47%	17	12.23%	

SPEED

2122 SE Harding St

Day: Wednesday
Date: 4/14/2021

City: Port St. Lucie
Project #: FL21_140076_036

Summary

Time	< 15	15 - 19	20 - 24	25 - 29	30 - 34	35 - 39	40 - 44	45 - 49	50 - 54	55 - 59	60 - 64	65 - 69	70 +	Total
00:00 AM	0	0	0	0	0	0	0	0	0	0	0	0	0	0
01:00	0	0	0	0	0	0	0	0	0	0	0	0	0	0
02:00	0	0	1	1	0	0	0	0	0	0	0	0	0	2
03:00	0	0	0	0	0	0	0	0	0	0	0	0	0	0
04:00	0	1	0	0	0	0	0	0	0	0	0	0	0	1
05:00	0	0	1	3	0	0	0	0	0	0	0	0	0	4
06:00	0	1	0	2	0	0	0	0	0	0	0	0	0	3
07:00	0	1	2	2	1	1	0	0	0	0	0	0	0	7
08:00	3	3	7	4	0	0	0	0	0	0	0	0	0	17
09:00	0	1	4	3	2	0	0	0	0	0	0	0	0	10
10:00	1	1	2	5	2	0	0	0	0	0	0	0	0	11
11:00	1	0	5	4	2	1	0	0	0	0	0	0	0	13
12:00 PM	1	0	4	2	2	1	0	0	0	0	0	0	0	10
13:00	0	2	4	2	5	0	0	0	0	0	0	0	0	13
14:00	1	1	1	3	1	0	0	0	0	0	0	0	0	7
15:00	2	0	5	4	3	0	0	0	0	0	0	0	0	14
16:00	1	1	5	1	0	0	1	0	0	0	0	0	0	9
17:00	1	0	5	3	4	0	0	0	0	0	0	0	0	13
18:00	0	2	1	4	2	1	0	0	0	0	0	0	0	10
19:00	0	0	4	3	2	0	0	0	0	0	0	0	0	9
20:00	0	2	3	1	1	0	0	0	0	0	0	0	0	7
21:00	0	0	1	1	0	0	0	0	0	0	0	0	0	2
22:00	1	0	1	1	0	0	0	0	0	0	0	0	0	3
23:00	0	1	0	0	1	0	0	0	0	0	0	0	0	2
Totals	12	17	56	49	28	4	1							167
% of Totals	7%	10%	34%	29%	17%	2%	1%							100%

AM Volumes	5	8	22	24	7	2	0	0	0	0	0	0	0	68
% AM	3%	5%	13%	14%	4%	1%								41%
AM Peak Hour	08:00	08:00	08:00	10:00	09:00	07:00								08:00
Volume	3	3	7	5	2	1								17
PM Volumes	7	9	34	25	21	2	1	0	0	0	0	0	0	99
% PM	4%	5%	20%	15%	13%	1%	1%							59%
PM Peak Hour	15:00	13:00	15:00	15:00	13:00	12:00	16:00							15:00
Volume	2	2	5	4	5	1	1							14
Directional Peak Periods		AM 7-9				NOON 12-2			PM 4-6			Off Peak Volumes		
All Speeds		Volume	%		Volume	%		Volume	%		Volume	%		
		24	14%		23	14%		22	13%		98	59%		

Direction	Percentiles					
	15th	50th	Average	85th	95th	ADT
	19	25	25	31	34	167
Summary	Pace					
	10mph Pace	# in Pace	% in Pace	Number of Vehicles >= 25 MPH		% of Vehicles >= 25 MPH
	20 - 29	105	62.87%	82		49.10%

SPEED

142 NW Dorchester St

Day: Wednesday
Date: 7/7/2021City: Port Saint Lucie
Project #: FL21_130146_007**Summary**

Time	< 15	15 - 19	20 - 24	25 - 29	30 - 34	35 - 39	40 - 44	45 - 49	50 - 54	55 - 59	60 - 64	65 - 69	70 +	Total
00:00 AM	0	0	0	0	1	0	0	0	0	0	0	0	0	1
01:00	0	0	1	0	0	0	0	0	0	0	0	0	0	1
02:00	0	0	0	0	1	0	0	0	0	0	0	0	0	1
03:00	0	0	0	1	0	0	0	0	0	0	0	0	0	1
04:00	0	0	0	1	0	0	0	0	0	0	0	0	0	1
05:00	0	0	3	3	0	1	0	0	0	0	0	0	0	7
06:00	0	1	3	10	4	2	0	0	0	0	0	0	0	20
07:00	1	1	3	20	4	1	0	0	0	0	0	0	0	30
08:00	0	3	6	7	7	4	0	0	0	0	0	0	0	27
09:00	1	1	8	9	8	0	0	0	0	0	0	0	0	27
10:00	1	2	7	10	2	1	0	0	0	0	0	0	0	23
11:00	2	3	6	12	6	1	0	0	0	0	0	0	0	30
12:00 PM	3	2	3	12	4	0	0	0	0	0	0	0	0	24
13:00	1	1	2	9	5	2	0	0	0	0	0	0	0	20
14:00	0	2	7	8	11	4	0	0	0	0	0	0	0	32
15:00	2	1	5	10	5	3	1	0	0	0	0	0	0	27
16:00	0	1	4	16	6	3	1	0	0	0	0	0	0	31
17:00	1	1	1	13	8	0	0	0	0	0	0	0	0	24
18:00	0	0	6	7	5	0	0	0	0	0	0	0	0	18
19:00	1	2	0	6	6	0	0	0	0	0	0	0	0	15
20:00	1	2	4	9	3	1	1	0	0	0	0	0	0	21
21:00	0	0	3	6	5	0	0	0	0	0	0	0	0	14
22:00	0	0	1	1	2	0	0	0	0	0	0	0	0	4
23:00	0	0	2	3	0	0	0	0	0	0	0	0	0	5
Totals	14	23	75	173	93	23	3							404
% of Totals	3%	6%	19%	43%	23%	6%	1%							100%

AM Volumes	5	11	37	73	33	10	0	0	0	0	0	0	0	169
% AM	1%	3%	9%	18%	8%	2%								42%
AM Peak Hour	11:00	08:00	09:00	07:00	09:00	08:00								07:00
Volume	2	3	8	20	8	4								30
PM Volumes	9	12	38	100	60	13	3	0	0	0	0	0	0	235
% PM	2%	3%	9%	25%	15%	3%	1%							58%
PM Peak Hour	12:00	12:00	14:00	16:00	14:00	14:00	15:00							14:00
Volume	3	2	7	16	11	4	1							32

Directional Peak Periods All Speeds	AM 7-9		NOON 12-2		PM 4-6		Off Peak Volumes	
	Volume	%	Volume	%	Volume	%	Volume	%
	57	↔ 14%	44	↔ 11%	55	↔ 14%	248	↔ 61%

Direction	Percentiles					
	15th	50th	Average	85th	95th	ADT
	22	28	27	33	36	404
Summary	Pace					
	10mph Pace	# in Pace	% in Pace	Number of Vehicles >= 25 MPH	% of Vehicles >= 25 MPH	
	25 - 34	266	65.84%	292	72.28%	

SPEED

541 NW Colonial St

Day: Wednesday
Date: 7/7/2021City: Port Saint Lucie
Project #: FL21_130146_008**Summary**

Time	< 15	15 - 19	20 - 24	25 - 29	30 - 34	35 - 39	40 - 44	45 - 49	50 - 54	55 - 59	60 - 64	65 - 69	70 +	Total
00:00 AM	0	0	0	0	0	0	0	0	0	0	0	0	0	0
01:00	0	0	0	0	0	0	0	0	0	0	0	0	0	0
02:00	0	0	0	0	0	0	0	0	0	0	0	0	0	0
03:00	0	0	0	0	0	0	0	0	0	0	0	0	0	0
04:00	0	0	0	0	0	0	0	0	0	0	0	0	0	0
05:00	0	0	0	0	0	0	0	0	0	0	0	0	0	0
06:00	0	0	1	0	0	0	0	0	0	0	0	0	0	1
07:00	1	0	0	1	0	0	0	0	0	0	0	0	0	2
08:00	1	3	0	0	0	0	0	0	0	0	0	0	0	4
09:00	3	0	0	1	0	0	0	0	0	0	0	0	0	4
10:00	1	0	0	1	0	0	0	0	0	0	0	0	0	2
11:00	0	0	0	0	1	0	0	0	0	0	0	0	0	1
12:00 PM	0	3	2	1	0	0	0	0	0	0	0	0	0	6
13:00	0	0	0	1	0	0	0	0	0	0	0	0	0	1
14:00	3	0	1	1	0	0	0	0	0	0	0	0	0	5
15:00	2	2	0	0	0	0	0	0	0	0	0	0	0	4
16:00	1	1	0	0	0	0	0	0	0	0	0	0	0	2
17:00	1	4	2	0	0	0	0	0	0	0	0	0	0	7
18:00	4	0	1	1	0	0	0	0	0	0	0	0	0	6
19:00	2	1	2	0	0	0	0	0	0	0	0	0	0	5
20:00	0	4	1	0	0	0	0	0	0	0	0	0	0	5
21:00	1	2	0	1	0	0	0	0	0	0	0	0	0	4
22:00	0	2	1	0	0	0	0	0	0	0	0	0	0	3
23:00	0	0	0	0	0	0	0	0	0	0	0	0	0	0
Totals	20	22	11	8	1									62
% of Totals	32%	35%	18%	13%	2%									100%

AM Volumes	6	3	1	3	1	0	0	0	0	0	0	0	0	14
% AM	10%	5%	2%	5%	2%									23%
AM Peak Hour	09:00	08:00	06:00	07:00	11:00									08:00
Volume	3	3	1	1	1									4
PM Volumes	14	19	10	5	0	0	0	0	0	0	0	0	0	48
% PM	23%	31%	16%	8%										77%
PM Peak Hour	18:00	17:00	12:00	12:00										17:00
Volume	4	4	2	1										7
Directional Peak Periods All Speeds	AM 7-9		NOON 12-2		PM 4-6		Off Peak Volumes							
	Volume		%	Volume		%	Volume		%	Volume		%		
	6	↔	10%	7	↔	11%	9	↔	15%	40	↔	65%		

Direction	Percentiles					
	15th	50th	Average	85th	95th	ADT
	10	18	18	25	29	62
Summary	Pace					
	10mph Pace	# in Pace	% in Pace	Number of Vehicles >= 25 MPH	% of Vehicles >= 25 MPH	
	15 - 24	33	53.23%	9	14.52%	

SPEED

534 NW Sherbrooke Ave

Day: Wednesday
Date: 7/7/2021City: Port Saint Lucie
Project #: FL21_130146_009**Summary**

Time	< 15	15 - 19	20 - 24	25 - 29	30 - 34	35 - 39	40 - 44	45 - 49	50 - 54	55 - 59	60 - 64	65 - 69	70 +	Total
00:00 AM	0	0	0	0	0	0	0	0	0	0	0	0	0	0
01:00	0	0	0	0	0	0	0	0	0	0	0	0	0	0
02:00	0	0	0	0	0	0	0	0	0	0	0	0	0	0
03:00	0	0	0	0	0	0	0	0	0	0	0	0	0	0
04:00	0	0	0	1	0	0	0	0	0	0	0	0	0	1
05:00	0	0	0	0	0	0	0	0	0	0	0	0	0	0
06:00	0	0	2	0	0	0	0	0	0	0	0	0	0	2
07:00	1	2	1	0	1	0	0	0	0	0	0	0	0	5
08:00	1	1	2	2	0	0	0	0	0	0	0	0	0	6
09:00	1	1	0	0	0	0	0	0	0	0	0	0	0	2
10:00	0	1	1	1	0	0	0	0	0	0	0	0	0	3
11:00	2	2	0	0	0	0	0	0	0	0	0	0	0	4
12:00 PM	0	0	2	0	1	0	0	0	0	0	0	0	0	3
13:00	6	0	0	0	0	0	0	0	0	0	0	0	0	6
14:00	0	1	0	0	0	0	0	0	0	0	0	0	0	1
15:00	2	2	1	0	0	0	0	0	0	0	0	0	0	5
16:00	0	2	2	0	3	0	0	0	0	0	0	0	0	7
17:00	1	1	3	1	0	0	0	0	0	0	0	0	0	6
18:00	1	1	1	1	0	0	0	0	0	0	0	0	0	4
19:00	0	1	0	0	0	0	0	0	0	0	0	0	0	1
20:00	0	1	4	2	0	0	0	0	0	0	0	0	0	7
21:00	0	0	1	1	0	0	0	0	0	0	0	0	0	2
22:00	0	1	1	0	0	0	0	0	0	0	0	0	0	2
23:00	0	0	0	2	0	0	0	0	0	0	0	0	0	2
Totals	15	17	21	11	5									69
% of Totals	22%	25%	30%	16%	7%									100%

AM Volumes	5	7	6	4	1	0	0	0	0	0	0	0	0	23
% AM	7%	10%	9%	6%	1%									33%
AM Peak Hour	11:00	07:00	06:00	08:00	07:00									08:00
Volume	2	2	2	2	1									6
PM Volumes	10	10	15	7	4	0	0	0	0	0	0	0	0	46
% PM	14%	14%	22%	10%	6%									67%
PM Peak Hour	13:00	15:00	20:00	20:00	16:00									16:00
Volume	6	2	4	2	3									7
Directional Peak Periods All Speeds	AM 7-9		NOON 12-2		PM 4-6		Off Peak Volumes							
	Volume		%	Volume		%	Volume		%	Volume		%		
	11	↔	16%	9	↔	13%	13	↔	19%	36	↔	52%		

Direction	Percentiles					
	15th	50th	Average	85th	95th	ADT
	12	21	20	28	32	69
Summary	Pace					
	10mph Pace	# in Pace	% in Pace	Number of Vehicles >= 25 MPH	% of Vehicles >= 25 MPH	
	15 - 24	38	55.07%	16	23.19%	

SPEED

1801 SW Leafy Rd

Day: Wednesday
Date: 4/7/2021

City: Port St. Lucie
Project #: FL21_140076_009

Summary

Time	< 15	15 - 19	20 - 24	25 - 29	30 - 34	35 - 39	40 - 44	45 - 49	50 - 54	55 - 59	60 - 64	65 - 69	70 +	Total
00:00 AM	0	0	0	0	0	0	0	0	0	0	0	0	0	0
01:00	0	0	0	0	3	0	0	0	0	0	0	0	0	3
02:00	0	0	1	0	1	0	0	0	0	0	0	0	0	2
03:00	0	0	1	0	0	0	0	0	0	0	0	0	0	1
04:00	0	0	0	1	2	0	0	0	0	0	0	0	0	3
05:00	0	0	1	3	0	0	0	0	0	0	0	0	0	4
06:00	2	1	2	3	2	0	0	0	0	0	0	0	0	10
07:00	0	4	3	19	3	2	0	0	0	0	0	0	0	31
08:00	2	2	7	11	9	1	0	0	0	0	0	0	0	32
09:00	2	6	9	15	5	1	0	0	0	0	0	0	0	38
10:00	0	5	4	7	4	1	0	0	0	0	0	0	0	21
11:00	1	1	7	12	6	1	0	0	0	0	0	0	0	28
12:00 PM	2	1	3	9	6	2	0	0	0	0	0	0	0	23
13:00	4	3	3	12	4	3	0	0	0	0	0	0	0	29
14:00	2	4	5	8	6	0	1	0	0	0	0	0	0	26
15:00	1	3	4	12	13	2	0	0	0	0	0	0	0	35
16:00	0	7	18	13	3	1	0	0	0	0	0	0	0	42
17:00	7	9	20	15	0	0	0	0	0	0	0	0	0	51
18:00	0	4	11	16	7	0	0	0	0	0	0	0	0	38
19:00	1	5	15	10	2	1	0	0	0	0	0	0	0	34
20:00	1	3	1	4	5	1	0	0	0	0	0	0	0	15
21:00	0	0	8	3	3	2	0	0	0	0	0	0	0	16
22:00	0	0	3	1	3	0	0	0	0	0	0	0	0	7
23:00	0	0	0	3	0	0	0	0	0	0	0	0	0	3
Totals	25	58	126	177	87	18	1							492
% of Totals	5%	12%	26%	36%	18%	4%	0%							100%

AM Volumes	7	19	35	71	35	6	0	0	0	0	0	0	0	173
% AM	1%	4%	7%	14%	7%	1%								35%
AM Peak Hour	06:00	09:00	09:00	07:00	08:00	07:00								09:00
Volume	2	6	9	19	9	2								38
PM Volumes	18	39	91	106	52	12	1	0	0	0	0	0	0	319
% PM	4%	8%	18%	22%	11%	2%	0%							65%
PM Peak Hour	17:00	17:00	17:00	18:00	15:00	13:00	14:00							17:00
Volume	7	9	20	16	13	3	1							51
Directional Peak Periods		AM 7-9				NOON 12-2			PM 4-6			Off Peak Volumes		
All Speeds		Volume		%	Volume		%	Volume		%	Volume		%	
		63	↔	13%	52	↔	11%	93	↔	19%	284	↔	58%	

Direction	Percentiles					
	15th	50th	Average	85th	95th	ADT
	19	26	25	32	35	492
Summary	Pace					
	10mph Pace	# in Pace	% in Pace	Number of Vehicles >= 25 MPH	% of Vehicles >= 25 MPH	
	20 - 29	303	61.59%	283	57.52%	

SPEED

232 SW Marathon Ave

Day: Wednesday
Date: 4/7/2021

City: Port St. Lucie
Project #: FL21_140076_017

Summary

Time	< 15	15 - 19	20 - 24	25 - 29	30 - 34	35 - 39	40 - 44	45 - 49	50 - 54	55 - 59	60 - 64	65 - 69	70 +	Total
00:00 AM	0	0	0	0	0	0	0	0	0	0	0	0	0	0
01:00	0	0	0	0	0	0	0	0	0	0	0	0	0	0
02:00	0	0	0	0	0	0	0	0	0	0	0	0	0	0
03:00	0	0	0	0	0	0	0	0	0	0	0	0	0	0
04:00	0	0	0	0	0	0	0	0	0	0	0	0	0	0
05:00	0	0	0	0	0	0	0	0	0	0	0	0	0	0
06:00	0	0	0	1	0	0	0	0	0	0	0	0	0	1
07:00	2	0	0	3	0	0	0	0	0	0	0	0	0	5
08:00	1	2	0	0	0	0	0	0	0	0	0	0	0	3
09:00	0	0	1	0	0	0	0	0	0	0	0	0	0	1
10:00	3	0	3	3	0	0	0	0	0	0	0	0	0	9
11:00	0	1	2	0	0	0	0	0	0	0	0	0	0	3
12:00 PM	3	2	3	3	1	0	0	0	0	0	0	0	0	12
13:00	0	0	0	3	1	0	0	0	0	0	0	0	0	4
14:00	0	1	4	3	0	0	0	0	0	0	0	0	0	8
15:00	2	1	1	2	1	0	0	0	0	0	0	0	0	7
16:00	2	2	2	3	0	1	0	0	0	0	0	0	0	10
17:00	0	2	2	1	0	1	0	0	0	0	0	0	0	6
18:00	0	0	0	0	1	0	0	0	0	0	0	0	0	1
19:00	1	0	1	2	0	0	0	0	0	0	0	0	0	4
20:00	0	1	1	1	0	0	0	0	0	0	0	0	0	3
21:00	0	1	0	0	1	0	0	0	0	0	0	0	0	2
22:00	0	0	0	0	0	0	0	0	0	0	0	0	0	0
23:00	0	0	0	0	0	0	0	0	0	0	0	0	0	0
Totals	14	13	20	25	5	2								79
% of Totals	18%	16%	25%	32%	6%	3%								100%

AM Volumes	6	3	6	7	0	0	0	0	0	0	0	0	0	22		
% AM	8%	4%	8%	9%										28%		
AM Peak Hour	10:00	08:00	10:00	07:00										10:00		
Volume	3	2	3	3										9		
PM Volumes	8	10	14	18	5	2	0	0	0	0	0	0	0	57		
% PM	10%	13%	18%	23%	6%	3%								72%		
PM Peak Hour	12:00	12:00	14:00	12:00	12:00	16:00								12:00		
Volume	3	2	4	3	1	1								12		
Directional Peak Periods		AM 7-9				NOON 12-2				PM 4-6				Off Peak Volumes		
All Speeds		Volume	↔		%	Volume	↔		%	Volume	↔		%	Volume	↔	
		8			10%	16			20%	16			20%	39		

Direction	Percentiles					
	15th	50th	Average	85th	95th	ADT
	13	23	22	29	33	79
Summary	Pace					
	10mph Pace	# in Pace	% in Pace	Number of Vehicles >= 25 MPH	% of Vehicles >= 25 MPH	
	20 - 29	45	56.96%	32	40.51%	

SPEED

1701 SW Davis St

Day: Wednesday
Date: 4/7/2021

City: Port St. Lucie
Project #: FL21_140076_018

Summary

Time	< 15	15 - 19	20 - 24	25 - 29	30 - 34	35 - 39	40 - 44	45 - 49	50 - 54	55 - 59	60 - 64	65 - 69	70 +	Total
00:00 AM	0	0	0	0	1	0	0	0	0	0	0	0	0	1
01:00	0	0	2	1	1	0	0	0	0	0	0	0	0	4
02:00	0	0	0	2	0	0	0	0	0	0	0	0	0	2
03:00	0	0	1	0	0	0	0	0	0	0	0	0	0	1
04:00	0	1	1	1	1	0	0	0	0	0	0	0	0	4
05:00	0	0	2	0	0	0	0	0	0	0	0	0	0	2
06:00	0	2	7	1	2	0	1	0	0	0	0	0	0	13
07:00	1	1	10	6	1	1	1	0	0	0	0	0	0	21
08:00	0	0	6	3	2	3	0	0	0	0	0	0	0	14
09:00	0	2	3	4	2	0	1	0	0	0	0	0	0	12
10:00	0	1	5	5	1	1	0	0	0	0	0	0	0	13
11:00	1	0	9	6	2	0	0	0	0	0	0	0	0	18
12:00 PM	2	0	5	7	3	0	0	0	0	0	0	0	0	17
13:00	1	2	8	12	6	4	0	0	0	0	0	0	0	33
14:00	0	6	13	10	7	2	0	0	0	0	0	0	0	38
15:00	0	2	6	8	8	1	0	0	0	0	0	0	0	25
16:00	0	1	10	18	10	1	1	1	0	0	0	0	0	42
17:00	0	4	6	18	5	2	0	1	0	0	0	0	0	36
18:00	1	4	14	12	5	1	0	0	0	0	0	0	0	37
19:00	0	2	10	3	4	2	0	0	0	0	0	0	0	21
20:00	0	2	7	3	3	0	0	0	0	0	0	0	0	15
21:00	1	1	1	3	1	0	0	0	0	0	0	0	0	7
22:00	0	1	1	3	1	0	0	0	0	0	0	0	0	6
23:00	0	0	2	0	0	0	0	0	0	0	0	0	0	2
Totals	7	32	129	126	66	18	4	2						384
% of Totals	2%	8%	34%	33%	17%	5%	1%	1%						100%

AM Volumes	2	7	46	29	13	5	3	0	0	0	0	0	0	105			
% AM	1%	2%	12%	8%	3%	1%	1%							27%			
AM Peak Hour	07:00	06:00	07:00	07:00	06:00	08:00	06:00							07:00			
Volume	1	2	10	6	2	3	1							21			
PM Volumes	5	25	83	97	53	13	1	2	0	0	0	0	0	279			
% PM	1%	7%	22%	25%	14%	3%	0%	1%						73%			
PM Peak Hour	12:00	14:00	18:00	16:00	16:00	13:00	16:00	16:00						16:00			
Volume	2	6	14	18	10	4	1	1						42			
Directional Peak Periods		AM 7-9				NOON 12-2			PM 4-6			Off Peak Volumes					
All Speeds		Volume	↔		%	Volume	↔		%	Volume	↔		%	Volume	↔		%
		35			9%	50			13%	78			20%	221			58%

Direction	Percentiles					
	15th	50th	Average	85th	95th	ADT
	21	26	26	32	36	384
Summary	Pace					
	10mph Pace	# in Pace	% in Pace	Number of Vehicles >= 25 MPH	% of Vehicles >= 25 MPH	
	20 - 29	255	66.41%	216	56.25%	

SPEED

1002 SW Provincetown Ln

Day: Wednesday
Date: 4/7/2021

City: Port St. Lucie
Project #: FL21_140076_019

Summary

Time	< 15	15 - 19	20 - 24	25 - 29	30 - 34	35 - 39	40 - 44	45 - 49	50 - 54	55 - 59	60 - 64	65 - 69	70 +	Total
00:00 AM	1	1	0	1	0	0	0	0	0	0	0	0	0	3
01:00	0	0	0	0	1	0	0	0	0	0	0	0	0	1
02:00	1	0	0	0	1	0	0	0	0	0	0	0	0	2
03:00	0	0	1	0	0	0	0	0	0	0	0	0	0	1
04:00	0	1	1	1	1	0	0	0	0	0	0	0	0	4
05:00	1	0	1	3	1	3	0	0	0	0	0	0	0	9
06:00	0	3	6	6	1	1	0	0	0	0	0	0	0	17
07:00	2	2	4	9	6	2	0	0	0	0	0	0	0	25
08:00	1	3	8	7	9	1	0	0	0	0	0	0	0	29
09:00	3	4	4	6	1	0	0	0	0	0	0	0	0	18
10:00	1	3	4	6	8	0	0	0	0	0	0	0	0	22
11:00	0	3	3	10	2	0	0	0	0	0	0	0	0	18
12:00 PM	0	1	7	10	8	2	0	0	0	0	0	0	0	28
13:00	1	1	5	7	4	2	0	0	0	0	0	0	0	20
14:00	0	1	7	14	7	0	0	0	0	0	0	0	0	29
15:00	2	4	6	6	5	1	0	0	0	0	0	0	0	24
16:00	2	8	11	14	1	0	0	0	0	0	0	0	0	36
17:00	0	5	13	16	9	3	0	0	0	0	0	0	0	46
18:00	1	3	5	14	10	2	0	0	0	0	0	0	0	35
19:00	0	4	9	10	7	1	0	0	0	0	0	0	0	31
20:00	0	1	6	4	4	0	0	0	0	0	0	0	0	15
21:00	1	1	5	10	10	1	1	0	0	0	0	0	0	29
22:00	0	3	2	4	2	0	0	0	0	0	0	0	0	11
23:00	0	1	2	2	2	0	1	0	0	0	0	0	0	8
Totals	17	53	110	160	100	19	2							461
% of Totals	4%	11%	24%	35%	22%	4%	0%							100%

AM Volumes	10	20	32	49	31	7	0	0	0	0	0	0	0	149
% AM	2%	4%	7%	11%	7%	2%								32%
AM Peak Hour	09:00	09:00	08:00	11:00	08:00	05:00								08:00
Volume	3	4	8	10	9	3								29
PM Volumes	7	33	78	111	69	12	2	0	0	0	0	0	0	312
% PM	2%	7%	17%	24%	15%	3%	0%							68%
PM Peak Hour	15:00	16:00	17:00	17:00	18:00	17:00	21:00							17:00
Volume	2	8	13	16	10	3	1							46
Directional Peak Periods		AM 7-9				NOON 12-2			PM 4-6			Off Peak Volumes		
All Speeds		Volume	%		Volume	%		Volume	%		Volume	%		
		54	←→	12%	48	←→	10%	82	←→	18%	277	←→	60%	

Direction	Percentiles					
	15th	50th	Average	85th	95th	ADT
	20	27	26	33	35	461
Summary	Pace					
	10mph Pace	# in Pace	% in Pace	Number of Vehicles >= 25 MPH	% of Vehicles >= 25 MPH	
	20 - 29	270	58.57%	281	60.95%	

SPEED

731 SE Forgal St

Day: Wednesday
Date: 4/7/2021

City: Port St. Lucie
Project #: FL21_140076_032

Summary

Time	< 15	15 - 19	20 - 24	25 - 29	30 - 34	35 - 39	40 - 44	45 - 49	50 - 54	55 - 59	60 - 64	65 - 69	70 +	Total
00:00 AM	0	0	0	0	0	0	0	0	0	0	0	0	0	0
01:00	0	0	0	0	0	0	0	0	0	0	0	0	0	0
02:00	0	1	0	0	0	0	0	0	0	0	0	0	0	1
03:00	0	0	0	0	0	0	0	0	0	0	0	0	0	0
04:00	0	0	0	2	2	1	0	0	0	0	0	0	0	5
05:00	0	0	0	4	2	1	0	0	0	0	0	0	0	7
06:00	0	1	2	7	3	0	0	0	0	0	0	0	0	13
07:00	3	4	5	14	8	0	0	0	0	0	0	0	0	34
08:00	5	2	8	12	5	1	0	0	0	0	0	0	0	33
09:00	5	4	11	4	3	2	0	0	0	0	0	0	0	29
10:00	3	2	6	9	11	1	0	0	0	0	0	0	0	32
11:00	5	4	8	9	5	2	0	0	0	0	0	0	0	33
12:00 PM	2	2	10	12	4	2	0	0	0	0	0	0	0	32
13:00	7	4	6	9	6	2	0	0	0	0	0	0	0	34
14:00	2	7	15	12	10	0	0	0	0	0	0	0	0	46
15:00	7	9	10	14	10	1	0	0	0	0	0	0	0	51
16:00	0	6	9	17	13	1	0	0	0	0	0	0	0	46
17:00	3	5	8	16	4	2	0	0	0	0	0	0	0	38
18:00	2	1	12	14	5	2	1	0	0	0	0	0	0	37
19:00	5	4	11	14	4	2	0	0	0	0	0	0	0	40
20:00	2	1	2	12	7	0	0	0	0	0	0	0	0	24
21:00	0	0	5	0	0	1	0	0	0	0	0	0	0	6
22:00	1	3	2	3	3	1	0	0	0	0	0	0	0	13
23:00	0	0	3	1	2	0	0	0	0	0	0	0	0	6
Totals	52	60	133	185	107	22	1							560
% of Totals	9%	11%	24%	33%	19%	4%	0%							100%

AM Volumes	21	18	40	61	39	8	0	0	0	0	0	0	0	187			
% AM	4%	3%	7%	11%	7%	1%								33%			
AM Peak Hour	08:00	07:00	09:00	07:00	10:00	09:00								07:00			
Volume	5	4	11	14	11	2								34			
PM Volumes	31	42	93	124	68	14	1	0	0	0	0	0	0	373			
% PM	6%	8%	17%	22%	12%	3%	0%							67%			
PM Peak Hour	13:00	15:00	14:00	16:00	16:00	12:00	18:00							15:00			
Volume	7	9	15	17	13	2	1							51			
Directional Peak Periods		AM 7-9				NOON 12-2			PM 4-6			Off Peak Volumes					
All Speeds		Volume	↔		%	Volume	↔		%	Volume	↔		%	Volume	↔		%
		67			12%	66			12%	84			15%	343			61%

Direction	Percentiles					
	15th	50th	Average	85th	95th	ADT
	18	26	25	32	35	560
Summary	Pace					
	10mph Pace	# in Pace	% in Pace	Number of Vehicles >= 25 MPH	% of Vehicles >= 25 MPH	
	20 - 29	318	56.79%	315	56.25%	

SPEED

666 SE Thanksgiving Ave

Day: Wednesday
Date: 4/7/2021

City: Port St. Lucie
Project #: FL21_140076_033

Summary

Time	< 15	15 - 19	20 - 24	25 - 29	30 - 34	35 - 39	40 - 44	45 - 49	50 - 54	55 - 59	60 - 64	65 - 69	70 +	Total
00:00 AM	0	0	0	0	0	0	0	0	0	0	0	0	0	0
01:00	0	0	0	0	0	0	0	0	0	0	0	0	0	0
02:00	0	0	0	0	0	0	0	0	0	0	0	0	0	0
03:00	0	0	0	0	0	0	0	0	0	0	0	0	0	0
04:00	0	0	0	0	0	0	0	0	0	0	0	0	0	0
05:00	0	2	2	1	0	0	0	0	0	0	0	0	0	5
06:00	3	3	1	0	1	1	0	0	0	0	0	0	0	9
07:00	1	9	7	4	0	0	0	0	0	0	0	0	0	21
08:00	1	2	5	5	1	0	0	0	0	0	0	0	0	14
09:00	1	0	4	4	0	0	0	0	0	0	0	0	0	9
10:00	0	4	4	4	0	0	0	0	0	0	0	0	0	12
11:00	2	2	7	0	0	0	0	0	0	0	0	0	0	11
12:00 PM	0	4	5	8	1	1	0	0	0	0	0	0	0	19
13:00	0	5	3	2	0	1	0	0	0	0	0	0	0	11
14:00	2	1	2	4	0	1	0	0	0	0	0	0	0	10
15:00	2	6	3	2	5	0	0	0	0	0	0	0	0	18
16:00	3	5	2	6	4	0	0	0	0	0	0	0	0	20
17:00	0	1	9	8	3	0	0	0	0	0	0	0	0	21
18:00	1	3	5	4	3	2	0	0	0	0	0	0	0	18
19:00	0	2	4	4	0	1	0	0	0	0	0	0	0	11
20:00	0	3	2	3	1	0	0	0	0	0	0	0	0	9
21:00	0	2	2	0	1	0	0	0	0	0	0	0	0	5
22:00	0	1	1	0	0	0	0	0	0	0	0	0	0	2
23:00	0	1	1	3	0	0	0	0	0	0	0	0	0	5
Totals	16	56	69	62	20	7								230
% of Totals	7%	24%	30%	27%	9%	3%								100%

AM Volumes	8	22	30	18	2	1	0	0	0	0	0	0	0	81		
% AM	3%	10%	13%	8%	1%	0%								35%		
AM Peak Hour	06:00	07:00	07:00	08:00	06:00	06:00								07:00		
Volume	3	9	7	5	1	1								21		
PM Volumes	8	34	39	44	18	6	0	0	0	0	0	0	0	149		
% PM	3%	15%	17%	19%	8%	3%								65%		
PM Peak Hour	16:00	15:00	17:00	12:00	15:00	18:00								17:00		
Volume	3	6	9	8	5	2								21		
Directional Peak Periods		AM 7-9				NOON 12-2				PM 4-6				Off Peak Volumes		
All Speeds		Volume	↔		%	Volume	↔		%	Volume	↔		%	Volume	↔	
		35			15%	30			13%	41			18%	124		

Direction	Percentiles					
	15th	50th	Average	85th	95th	ADT
	17	23	23	29	34	230
Summary	Pace					
	10mph Pace	# in Pace	% in Pace	Number of Vehicles >= 25 MPH	% of Vehicles >= 25 MPH	
	20 - 29	131	56.96%	89	38.70%	

SPEED

3791 SW Kakopo St

Day: Wednesday
Date: 4/7/2021

City: Port St. Lucie
Project #: FL21_140076_006

Summary

Time	< 15	15 - 19	20 - 24	25 - 29	30 - 34	35 - 39	40 - 44	45 - 49	50 - 54	55 - 59	60 - 64	65 - 69	70 +	Total
00:00 AM	0	0	0	0	0	0	0	0	0	0	0	0	0	0
01:00	0	0	0	0	0	0	0	0	0	0	0	0	0	0
02:00	0	0	0	0	0	0	0	0	0	0	0	0	0	0
03:00	0	0	0	0	0	0	0	0	0	0	0	0	0	0
04:00	0	0	0	0	0	0	0	0	0	0	0	0	0	0
05:00	0	0	0	0	0	0	0	0	0	0	0	0	0	0
06:00	0	1	0	1	0	0	0	0	0	0	0	0	0	2
07:00	1	2	3	0	0	0	0	0	0	0	0	0	0	6
08:00	0	1	3	4	0	0	0	0	0	0	0	0	0	8
09:00	0	2	2	2	1	0	0	0	0	0	0	0	0	7
10:00	1	0	0	2	1	0	0	0	0	0	0	0	0	4
11:00	0	2	3	3	0	0	0	0	0	0	0	0	0	8
12:00 PM	0	2	3	0	0	0	0	0	0	0	0	0	0	5
13:00	0	0	1	2	1	0	0	0	0	0	0	0	0	4
14:00	0	1	2	2	1	1	0	0	0	0	0	0	0	7
15:00	1	2	2	4	0	0	0	0	0	0	0	0	0	9
16:00	0	2	3	2	0	0	0	0	0	0	0	0	0	7
17:00	1	2	0	3	0	0	0	0	0	0	0	0	0	6
18:00	2	1	2	1	0	0	0	0	0	0	0	0	0	6
19:00	0	0	1	1	0	0	0	0	0	0	0	0	0	2
20:00	2	1	2	0	0	0	0	0	0	0	0	0	0	5
21:00	1	0	1	1	0	0	0	0	0	0	0	0	0	3
22:00	0	0	0	0	0	0	0	0	0	0	0	0	0	0
23:00	0	0	0	1	0	0	0	0	0	0	0	0	0	1
Totals	9	19	28	29	4	1								90
% of Totals	10%	21%	31%	32%	4%	1%								100%

AM Volumes	2	8	11	12	2	0	0	0	0	0	0	0	0	35		
% AM	2%	9%	12%	13%	2%									39%		
AM Peak Hour	07:00	07:00	07:00	08:00	09:00									08:00		
Volume	1	2	3	4	1									8		
PM Volumes	7	11	17	17	2	1	0	0	0	0	0	0	0	55		
% PM	8%	12%	19%	19%	2%	1%								61%		
PM Peak Hour	18:00	12:00	12:00	15:00	13:00	14:00								15:00		
Volume	2	2	3	4	1	1								9		
Directional Peak Periods		AM 7-9				NOON 12-2				PM 4-6				Off Peak Volumes		
All Speeds		Volume	↔		%	Volume	↔		%	Volume	↔		%	Volume	↔	
		14			16%	9			10%	13			14%	54		

Direction	Percentiles					
	15th	50th	Average	85th	95th	ADT
	16	23	22	29	31	90
Summary	Pace					
	10mph Pace	# in Pace	% in Pace	Number of Vehicles >= 25 MPH	% of Vehicles >= 25 MPH	
	20 - 29	57	63.33%	34	37.78%	

SPEED

3239 SW Hickenlooper St

Day: Wednesday
Date: 4/7/2021

City: Port St. Lucie
Project #: FL21_140076_007

Summary

Time	< 15	15 - 19	20 - 24	25 - 29	30 - 34	35 - 39	40 - 44	45 - 49	50 - 54	55 - 59	60 - 64	65 - 69	70 +	Total
00:00 AM	0	0	0	0	0	0	0	0	0	0	0	0	0	0
01:00	0	0	0	0	0	0	0	0	0	0	0	0	0	0
02:00	0	0	0	0	0	0	0	0	0	0	0	0	0	0
03:00	0	0	0	0	0	0	0	0	0	0	0	0	0	0
04:00	0	0	0	0	0	0	0	0	0	0	0	0	0	0
05:00	0	0	0	0	1	0	0	0	0	0	0	0	0	1
06:00	0	0	2	2	0	0	0	0	0	0	0	0	0	4
07:00	1	3	2	1	0	0	0	0	0	0	0	0	0	7
08:00	0	1	3	3	1	0	0	0	0	0	0	0	0	8
09:00	1	2	1	2	0	0	0	0	0	0	0	0	0	6
10:00	0	2	2	2	0	0	0	0	0	0	0	0	0	6
11:00	0	3	4	2	1	0	0	0	0	0	0	0	0	10
12:00 PM	2	2	1	1	1	0	0	0	0	0	0	0	0	7
13:00	0	0	0	3	1	0	0	0	0	0	0	0	0	4
14:00	1	3	0	0	0	0	0	0	0	0	0	0	0	4
15:00	1	2	4	0	0	0	0	0	0	0	0	0	0	7
16:00	1	2	2	1	0	0	0	0	0	0	0	0	0	6
17:00	1	4	4	1	0	0	0	0	0	0	0	0	0	10
18:00	4	2	3	3	0	0	0	0	0	0	0	0	0	12
19:00	1	4	1	1	0	0	0	0	0	0	0	0	0	7
20:00	3	1	2	1	0	0	0	0	0	0	0	0	0	7
21:00	0	1	0	0	2	0	0	0	0	0	0	0	0	3
22:00	1	0	1	0	0	0	0	0	0	0	0	0	0	2
23:00	0	2	0	1	0	0	0	0	0	0	0	0	0	3
Totals	17	34	32	24	7									114
% of Totals	15%	30%	28%	21%	6%									100%

AM Volumes	2	11	14	12	3	0	0	0	0	0	0	0	0	42
% AM	2%	10%	12%	11%	3%									37%
AM Peak Hour	07:00	07:00	11:00	08:00	05:00									11:00
Volume	1	3	4	3	1									10
PM Volumes	15	23	18	12	4	0	0	0	0	0	0	0	0	72
% PM	13%	20%	16%	11%	4%									63%
PM Peak Hour	18:00	17:00	15:00	13:00	21:00									18:00
Volume	4	4	4	3	2									12
Directional Peak Periods		AM 7-9			NOON 12-2			PM 4-6			Off Peak Volumes			
All Speeds		Volume		%	Volume		%	Volume		%	Volume		%	
		15	↔	13%	11	↔	10%	16	↔	14%	72	↔	63%	

Direction	Percentiles					
	15th	50th	Average	85th	95th	ADT
	15	21	21	28	31	114
Summary	Pace					
	10mph Pace	# in Pace	% in Pace	Number of Vehicles >= 25 MPH	% of Vehicles >= 25 MPH	
	15 - 24	66	57.89%	31	27.19%	

SPEED

1252 SE Mendavia Ave

Day: Wednesday
Date: 4/14/2021

City: Port St. Lucie
Project #: FL21_140076_034

Summary

Time	< 15	15 - 19	20 - 24	25 - 29	30 - 34	35 - 39	40 - 44	45 - 49	50 - 54	55 - 59	60 - 64	65 - 69	70 +	Total
00:00 AM	0	0	0	0	0	0	0	0	0	0	0	0	0	0
01:00	0	0	0	0	0	0	0	0	0	0	0	0	0	0
02:00	1	0	0	0	0	0	0	0	0	0	0	0	0	1
03:00	0	0	0	0	0	0	0	0	0	0	0	0	0	0
04:00	1	0	0	0	0	0	0	0	0	0	0	0	0	1
05:00	1	0	0	0	0	0	0	0	0	0	0	0	0	1
06:00	0	2	1	0	0	0	0	0	0	0	0	0	0	3
07:00	2	2	1	0	0	0	0	0	0	0	0	0	0	5
08:00	1	4	1	0	0	0	0	0	0	0	0	0	0	6
09:00	3	0	1	0	0	0	0	0	0	0	0	0	0	4
10:00	2	2	1	0	0	0	0	0	0	0	0	0	0	5
11:00	4	2	4	0	0	0	0	0	0	0	0	0	0	10
12:00 PM	2	4	2	0	0	0	0	0	0	0	0	0	0	8
13:00	3	6	1	0	0	0	0	0	0	0	0	0	0	10
14:00	0	0	2	0	0	0	0	0	0	0	0	0	0	2
15:00	1	4	4	0	0	0	0	0	0	0	0	0	0	9
16:00	7	8	4	0	0	0	0	0	0	0	0	0	0	19
17:00	5	5	1	0	0	0	0	0	0	0	0	0	0	11
18:00	2	4	2	0	0	0	0	0	0	0	0	0	0	8
19:00	3	1	0	0	0	0	0	0	0	0	0	0	0	4
20:00	1	1	1	0	0	0	0	0	0	0	0	0	0	3
21:00	1	1	0	0	0	0	0	0	0	0	0	0	0	2
22:00	1	1	0	0	0	0	0	0	0	0	0	0	0	2
23:00	0	0	0	0	0	0	0	0	0	0	0	0	0	0
Totals	41	47	26											114
% of Totals	36%	41%	23%											100%

AM Volumes	15	12	9	0	0	0	0	0	0	0	0	0	0	36			
% AM	13%	11%	8%											32%			
AM Peak Hour	11:00	08:00	11:00											11:00			
Volume	4	4	4											10			
PM Volumes	26	35	17	0	0	0	0	0	0	0	0	0	0	78			
% PM	23%	31%	15%											68%			
PM Peak Hour	16:00	16:00	15:00											16:00			
Volume	7	8	4											19			
Directional Peak Periods		AM 7-9				NOON 12-2				PM 4-6				Off Peak Volumes			
All Speeds		Volume		%		Volume		%		Volume		%		Volume		%	
		11	↔	10%		18	↔	16%		30	↔	26%		55	↔	48%	

Direction	Percentiles					
	15th	50th	Average	85th	95th	ADT
	9	17	16	22	24	114
Summary	Pace					
	10mph Pace	# in Pace	% in Pace	Number of Vehicles >= 25 MPH	% of Vehicles >= 25 MPH	
	15 - 24	73	64.04%	0	0.00%	

SPEED

2937 SE Darien Rd

Day: Wednesday
Date: 4/14/2021

City: Port St. Lucie
Project #: FL21_140076_035

Summary

Time	< 15	15 - 19	20 - 24	25 - 29	30 - 34	35 - 39	40 - 44	45 - 49	50 - 54	55 - 59	60 - 64	65 - 69	70 +	Total
00:00 AM	0	0	0	0	0	0	0	0	0	0	0	0	0	0
01:00	0	0	0	0	0	0	0	0	0	0	0	0	0	0
02:00	1	0	0	0	0	0	0	0	0	0	0	0	0	1
03:00	0	0	0	2	0	0	0	0	0	0	0	0	0	2
04:00	0	0	0	1	0	0	0	0	0	0	0	0	0	1
05:00	0	0	0	1	1	0	0	0	0	0	0	0	0	2
06:00	0	1	0	0	0	2	0	0	0	0	0	0	0	3
07:00	1	8	0	3	3	0	0	0	0	0	0	0	0	15
08:00	0	5	3	4	2	0	0	0	0	0	0	0	0	14
09:00	1	3	3	2	0	0	0	0	0	0	0	0	0	9
10:00	3	5	7	2	2	0	0	0	0	0	0	0	0	19
11:00	0	3	3	6	4	1	0	0	0	0	0	0	0	17
12:00 PM	0	3	2	5	3	1	0	0	0	0	0	0	0	14
13:00	0	3	5	1	3	0	0	0	0	0	0	0	0	12
14:00	5	3	3	9	2	0	0	0	0	0	0	0	0	22
15:00	0	5	2	9	6	0	0	0	0	0	0	0	0	22
16:00	0	2	3	5	3	2	2	0	0	0	0	0	0	17
17:00	0	2	3	2	5	3	1	0	0	0	0	0	0	16
18:00	0	1	1	5	1	1	0	1	0	0	0	0	0	10
19:00	2	3	2	6	0	0	1	0	0	0	0	0	0	14
20:00	0	1	2	1	4	0	0	0	0	0	0	0	0	8
21:00	0	1	0	1	2	0	0	0	0	0	0	0	0	4
22:00	0	0	1	0	0	0	0	0	0	0	0	0	0	1
23:00	0	0	0	0	0	0	0	0	0	0	0	0	0	0
Totals	13	49	40	65	41	10	4	1						223
% of Totals	6%	22%	18%	29%	18%	4%	2%	0%						100%

AM Volumes	6	25	16	21	12	3	0	0	0	0	0	0	0	83			
% AM	3%	11%	7%	9%	5%	1%								37%			
AM Peak Hour	10:00	07:00	10:00	11:00	11:00	06:00								10:00			
Volume	3	8	7	6	4	2								19			
PM Volumes	7	24	24	44	29	7	4	1	0	0	0	0	0	140			
% PM	3%	11%	11%	20%	13%	3%	2%	0%						63%			
PM Peak Hour	14:00	15:00	13:00	14:00	15:00	17:00	16:00	18:00						14:00			
Volume	5	5	5	9	6	3	2	1						22			
Directional Peak Periods		AM 7-9				NOON 12-2			PM 4-6			Off Peak Volumes					
All Speeds		Volume	↔		%	Volume	↔		%	Volume	↔		%	Volume	↔		%
		29			13%	26			12%	33			15%	135			61%

Direction	Percentiles					
	15th	50th	Average	85th	95th	ADT
	17	26	25	33	37	223
Summary	Pace					
	10mph Pace	# in Pace	% in Pace	Number of Vehicles >= 25 MPH	% of Vehicles >= 25 MPH	
	25 - 34	106	47.53%	121	54.26%	

SPEED

2199 SE Bowie St

Day: Wednesday
Date: 4/14/2021

City: Port St. Lucie
Project #: FL21_140076_039

Summary

Time	< 15	15 - 19	20 - 24	25 - 29	30 - 34	35 - 39	40 - 44	45 - 49	50 - 54	55 - 59	60 - 64	65 - 69	70 +	Total
00:00 AM	0	0	0	0	0	0	0	0	0	0	0	0	0	0
01:00	0	0	0	0	0	0	0	0	0	0	0	0	0	0
02:00	0	0	0	0	0	0	0	0	0	0	0	0	0	0
03:00	0	0	0	0	0	0	0	0	0	0	0	0	0	0
04:00	0	0	0	0	0	0	0	0	0	0	0	0	0	0
05:00	0	1	2	1	0	1	0	0	0	0	0	0	0	5
06:00	2	3	0	3	3	0	0	0	0	0	0	0	0	11
07:00	0	0	2	5	1	1	0	0	0	0	0	0	0	9
08:00	4	1	3	6	4	0	0	0	0	0	0	0	0	18
09:00	0	1	2	8	4	1	1	0	0	0	0	0	0	17
10:00	0	1	4	7	2	2	0	0	0	0	0	0	0	16
11:00	0	2	6	5	3	1	0	0	0	0	0	0	0	17
12:00 PM	1	6	4	4	0	0	0	0	0	0	0	0	0	15
13:00	0	0	7	3	4	1	0	0	0	0	0	0	0	15
14:00	0	3	3	7	1	2	0	0	0	0	0	0	0	16
15:00	1	0	6	7	11	1	1	0	0	0	0	0	0	27
16:00	0	0	2	5	3	0	0	1	0	0	0	0	0	11
17:00	0	0	7	5	4	2	1	1	0	0	0	0	0	20
18:00	0	4	4	2	2	1	0	0	0	0	0	0	0	13
19:00	0	0	3	6	2	1	1	0	0	0	0	0	0	13
20:00	0	1	2	2	0	0	0	0	0	0	0	0	0	5
21:00	1	0	1	1	2	1	0	0	0	0	0	0	0	6
22:00	0	1	2	0	1	2	0	0	0	0	0	0	0	6
23:00	0	0	1	1	0	2	0	0	0	0	0	0	0	4
Totals	9	24	61	78	47	19	4	2						244
% of Totals	4%	10%	25%	32%	19%	8%	2%	1%						100%

AM Volumes	6	9	19	35	17	6	1	0	0	0	0	0	0	93			
% AM	2%	4%	8%	14%	7%	2%	0%							38%			
AM Peak Hour	08:00	06:00	11:00	09:00	08:00	10:00	09:00							08:00			
Volume	4	3	6	8	4	2	1							18			
PM Volumes	3	15	42	43	30	13	3	2	0	0	0	0	0	151			
% PM	1%	6%	17%	18%	12%	5%	1%	1%						62%			
PM Peak Hour	12:00	12:00	13:00	14:00	15:00	14:00	15:00	16:00						15:00			
Volume	1	6	7	7	11	2	1	1						27			
Directional Peak Periods		AM 7-9				NOON 12-2			PM 4-6			Off Peak Volumes					
All Speeds		Volume	↔		%	Volume	↔		%	Volume	↔		%	Volume	↔		%
		27			11%	30			12%	31			13%	156			64%

Direction	Percentiles					
	15th	50th	Average	85th	95th	ADT
	20	27	27	34	38	244
Summary	Pace					
	10mph Pace	# in Pace	% in Pace	Number of Vehicles >= 25 MPH	% of Vehicles >= 25 MPH	
	20 - 29	139	56.97%	150	61.48%	

SPEED

2238 SE Avalon Rd

Day: Wednesday
Date: 4/21/2021

City: Port St. Lucie
Project #: FL21_140076_040

Summary

Time	< 15	15 - 19	20 - 24	25 - 29	30 - 34	35 - 39	40 - 44	45 - 49	50 - 54	55 - 59	60 - 64	65 - 69	70 +	Total
00:00 AM	0	0	0	0	0	0	0	0	0	0	0	0	0	0
01:00	0	0	0	1	0	0	0	0	0	0	0	0	0	1
02:00	0	0	0	1	0	0	0	0	0	0	0	0	0	1
03:00	0	0	0	0	0	0	0	0	0	0	0	0	0	0
04:00	0	0	0	1	2	1	0	0	0	0	0	0	0	4
05:00	0	0	2	1	0	0	0	0	0	0	0	0	0	3
06:00	0	4	4	9	2	2	0	0	0	0	0	0	0	21
07:00	0	0	3	12	8	0	0	0	0	0	0	0	0	23
08:00	1	2	5	6	2	0	0	0	0	0	0	0	0	16
09:00	0	2	9	7	6	2	0	0	0	0	0	0	0	26
10:00	1	3	2	14	5	4	0	0	0	0	0	0	0	29
11:00	0	5	5	3	3	4	1	0	0	0	0	0	0	21
12:00 PM	6	3	6	9	3	3	1	0	0	0	0	0	0	31
13:00	1	2	16	9	3	2	1	0	0	0	0	0	0	34
14:00	1	3	8	9	5	4	0	0	0	0	0	0	0	30
15:00	0	3	5	8	6	2	0	0	0	0	0	0	0	24
16:00	1	3	8	11	3	2	0	0	0	0	0	0	0	28
17:00	1	4	10	11	6	5	0	0	0	0	0	0	0	37
18:00	0	3	8	7	4	1	2	0	0	0	0	0	0	25
19:00	0	2	7	9	6	1	0	0	0	0	0	0	0	25
20:00	0	0	6	4	3	0	0	0	0	0	0	0	0	13
21:00	0	1	7	6	2	0	0	0	0	0	0	0	0	16
22:00	1	1	3	4	2	0	0	0	0	0	0	0	0	11
23:00	0	0	0	0	0	2	0	0	0	0	0	0	0	2
Totals	13	41	114	142	71	35	5							421
% of Totals	3%	10%	27%	34%	17%	8%	1%							100%

AM Volumes	2	16	30	55	28	13	1	0	0	0	0	0	0	145			
% AM	0%	4%	7%	13%	7%	3%	0%							34%			
AM Peak Hour	08:00	11:00	09:00	10:00	07:00	10:00	11:00							10:00			
Volume	1	5	9	14	8	4	1							29			
PM Volumes	11	25	84	87	43	22	4	0	0	0	0	0	0	276			
% PM	3%	6%	20%	21%	10%	5%	1%							66%			
PM Peak Hour	12:00	17:00	13:00	16:00	15:00	17:00	18:00							17:00			
Volume	6	4	16	11	6	5	2							37			
Directional Peak Periods		AM 7-9				NOON 12-2			PM 4-6			Off Peak Volumes					
All Speeds		Volume	↔		%	Volume	↔		%	Volume	↔		%	Volume	↔		%
		39			9%	65			15%	65			15%	252			60%

Direction	Percentiles					
	15th	50th	Average	85th	95th	ADT
	20	26	26	33	38	421
Summary	Pace					
	10mph Pace	# in Pace	% in Pace	Number of Vehicles >= 25 MPH		% of Vehicles >= 25 MPH
	20 - 29	256	60.81%	253		60.10%

SPEED

639 SE Stow Terr

Day: Wednesday
Date: 4/7/2021

City: Port St. Lucie
Project #: FL21_140076_029

Summary

Time	< 15	15 - 19	20 - 24	25 - 29	30 - 34	35 - 39	40 - 44	45 - 49	50 - 54	55 - 59	60 - 64	65 - 69	70 +	Total
00:00 AM	0	0	0	0	0	0	0	0	0	0	0	0	0	0
01:00	0	0	0	0	0	0	0	0	0	0	0	0	0	0
02:00	0	0	0	0	0	0	0	0	0	0	0	0	0	0
03:00	0	0	0	0	0	0	0	0	0	0	0	0	0	0
04:00	1	0	1	1	0	0	0	0	0	0	0	0	0	3
05:00	1	0	0	0	1	0	0	0	0	0	0	0	0	2
06:00	1	4	1	6	0	0	0	0	0	0	0	0	0	12
07:00	0	1	4	6	3	1	0	0	0	0	0	0	0	15
08:00	2	6	7	8	4	0	0	0	0	0	0	0	0	27
09:00	3	1	7	6	4	1	0	0	0	0	0	0	0	22
10:00	1	3	16	8	3	1	0	0	0	0	0	0	0	32
11:00	0	5	8	3	1	1	0	0	0	0	0	0	0	18
12:00 PM	3	3	1	10	2	0	2	0	0	0	0	0	0	21
13:00	0	3	6	9	2	0	0	0	0	0	0	0	0	20
14:00	0	3	8	3	2	0	0	0	0	0	0	0	0	16
15:00	3	2	7	9	3	0	0	0	0	0	0	0	0	24
16:00	2	6	8	8	6	0	0	0	0	0	0	0	0	30
17:00	0	7	4	8	2	0	0	0	0	0	0	0	0	21
18:00	1	2	5	7	1	1	0	0	0	0	0	0	0	17
19:00	5	3	8	4	0	0	0	0	0	0	0	0	0	20
20:00	1	3	7	4	0	0	0	0	0	0	0	0	0	15
21:00	2	0	2	1	0	0	0	0	0	0	0	0	0	5
22:00	0	0	0	2	0	1	0	0	0	0	0	0	0	3
23:00	0	0	2	2	0	1	0	0	0	0	0	0	0	5
Totals	26	52	102	105	34	7	2							328
% of Totals	8%	16%	31%	32%	10%	2%	1%							100%

AM Volumes	9	20	44	38	16	4	0	0	0	0	0	0	0	131
% AM	3%	6%	13%	12%	5%	1%								40%
AM Peak Hour	09:00	08:00	10:00	08:00	08:00	07:00								10:00
Volume	3	6	16	8	4	1								32
PM Volumes	17	32	58	67	18	3	2	0	0	0	0	0	0	197
% PM	5%	10%	18%	20%	5%	1%	1%							60%
PM Peak Hour	19:00	17:00	14:00	12:00	16:00	18:00	12:00							16:00
Volume	5	7	8	10	6	1	2							30
Directional Peak Periods		AM 7-9				NOON 12-2			PM 4-6			Off Peak Volumes		
All Speeds		Volume		%	Volume		%	Volume		%	Volume		%	
		42	↔	13%	41	↔	13%	51	↔	16%	194	↔	59%	

Direction	Percentiles					
	15th	50th	Average	85th	95th	ADT
	17	24	24	30	34	328
Summary	Pace					
	10mph Pace	# in Pace	% in Pace	Number of Vehicles >= 25 MPH	% of Vehicles >= 25 MPH	
	20 - 29	207	63.11%	148	45.12%	

SPEED

6730 NW Omega Rd

Day: Wednesday
Date: 4/14/2021

City: Port St. Lucie
Project #: FL21_140076_021

Summary

Time	< 15	15 - 19	20 - 24	25 - 29	30 - 34	35 - 39	40 - 44	45 - 49	50 - 54	55 - 59	60 - 64	65 - 69	70 +	Total
00:00 AM	0	0	0	0	0	0	0	0	0	0	0	0	0	0
01:00	1	0	0	0	0	0	0	0	0	0	0	0	0	1
02:00	0	0	0	0	1	0	0	0	0	0	0	0	0	1
03:00	0	0	1	2	0	0	0	0	0	0	0	0	0	3
04:00	0	1	1	0	0	0	0	0	0	0	0	0	0	2
05:00	0	0	0	1	0	0	0	0	0	0	0	0	0	1
06:00	0	0	0	1	1	1	0	0	0	0	0	0	0	2
07:00	0	3	6	7	3	0	0	0	0	0	0	0	0	19
08:00	1	1	2	12	3	2	0	0	0	0	0	0	0	21
09:00	0	1	8	5	0	0	0	0	0	0	0	0	0	14
10:00	2	1	5	3	2	0	0	0	0	0	0	0	0	13
11:00	0	1	4	6	2	0	0	0	0	0	0	0	0	13
12:00 PM	1	4	6	8	8	1	0	0	0	0	0	0	0	28
13:00	1	6	6	7	2	0	0	0	0	0	0	0	0	22
14:00	1	1	6	2	1	0	0	0	0	0	0	0	0	11
15:00	0	1	4	8	2	0	1	0	0	0	0	0	0	16
16:00	1	3	4	6	5	2	0	0	0	0	0	0	0	21
17:00	2	3	7	9	5	0	0	0	0	0	0	0	0	26
18:00	3	0	6	1	0	0	0	0	0	0	0	0	0	10
19:00	0	0	8	8	2	2	0	0	0	0	0	0	0	20
20:00	0	0	4	3	2	0	0	0	0	0	0	0	0	9
21:00	0	1	2	5	2	0	0	0	0	0	0	0	0	10
22:00	0	2	3	1	0	1	1	0	0	0	0	0	0	8
23:00	0	0	3	0	5	0	0	0	0	0	0	0	0	8
Totals	13	29	86	96	45	8	2							279
% of Totals	5%	10%	31%	34%	16%	3%	1%							100%

AM Volumes	4	8	27	38	11	2	0	0	0	0	0	0	0	90
% AM	1%	3%	10%	14%	4%	1%								32%
AM Peak Hour	10:00	07:00	09:00	08:00	07:00	08:00								08:00
Volume	2	3	8	12	3	2								21
PM Volumes	9	21	59	58	34	6	2	0	0	0	0	0	0	189
% PM	3%	8%	21%	21%	12%	2%	1%							68%
PM Peak Hour	18:00	13:00	19:00	17:00	12:00	16:00	15:00							12:00
Volume	3	6	8	9	8	2	1							28
Directional Peak Periods		AM 7-9				NOON 12-2			PM 4-6			Off Peak Volumes		
All Speeds		Volume	%		Volume	%		Volume	%		Volume	%		
		40	←→	14%	50	←→	18%	47	←→	17%	142	←→	51%	

Direction	Percentiles					
	15th	50th	Average	85th	95th	ADT
	20	26	25	31	35	279
Summary	Pace					
	10mph Pace	# in Pace	% in Pace	Number of Vehicles >= 25 MPH	% of Vehicles >= 25 MPH	
	20 - 29	182	65.23%	151	54.12%	

SPEED

6862 NW Jorgensen Rd

Day: Wednesday
Date: 4/14/2021

City: Port St. Lucie
Project #: FL21_140076_022

Summary

Time	< 15	15 - 19	20 - 24	25 - 29	30 - 34	35 - 39	40 - 44	45 - 49	50 - 54	55 - 59	60 - 64	65 - 69	70 +	Total
00:00 AM	0	0	0	0	0	0	0	0	0	0	0	0	0	0
01:00	0	0	0	2	0	0	0	0	0	0	0	0	0	2
02:00	0	1	1	0	1	0	0	0	0	0	0	0	0	3
03:00	0	0	0	0	0	0	0	0	0	0	0	0	0	0
04:00	0	0	1	0	0	0	0	0	0	0	0	0	0	1
05:00	0	1	0	0	1	0	0	0	0	0	0	0	0	2
06:00	0	0	3	4	2	2	0	0	0	0	0	0	0	11
07:00	1	4	6	4	0	0	0	0	0	0	0	0	0	15
08:00	0	2	4	5	1	0	0	0	0	0	0	0	0	12
09:00	2	4	3	6	2	0	0	0	0	0	0	0	0	17
10:00	0	5	5	7	1	1	0	0	0	0	0	0	0	19
11:00	0	2	7	5	1	1	0	0	0	0	0	0	0	16
12:00 PM	0	2	4	9	5	1	0	0	0	0	0	0	0	21
13:00	0	2	10	5	3	0	0	0	0	0	0	0	0	20
14:00	1	0	11	14	4	0	0	0	0	0	0	0	0	30
15:00	0	4	6	6	3	0	0	0	0	0	0	0	0	19
16:00	1	3	10	8	0	0	0	0	0	0	0	0	0	22
17:00	1	1	10	18	7	0	0	0	0	0	0	0	0	37
18:00	0	3	3	13	1	1	0	0	0	0	0	0	0	21
19:00	1	2	2	4	1	0	0	0	0	0	0	0	0	10
20:00	0	0	6	5	3	0	0	0	0	0	0	0	0	14
21:00	1	1	6	4	5	0	0	0	0	0	0	0	0	17
22:00	0	1	2	2	0	0	0	0	0	0	0	0	0	5
23:00	0	0	1	0	0	0	0	0	0	0	0	0	0	1
Totals	8	38	101	121	41	6								315
% of Totals	3%	12%	32%	38%	13%	2%								100%

AM Volumes	3	19	30	33	9	4	0	0	0	0	0	0	0	98		
% AM	1%	6%	10%	10%	3%	1%								31%		
AM Peak Hour	09:00	10:00	11:00	10:00	06:00	06:00								10:00		
Volume	2	5	7	7	2	2								19		
PM Volumes	5	19	71	88	32	2	0	0	0	0	0	0	0	217		
% PM	2%	6%	23%	28%	10%	1%								69%		
PM Peak Hour	14:00	15:00	14:00	17:00	17:00	12:00								17:00		
Volume	1	4	11	18	7	1								37		
Directional Peak Periods		AM 7-9				NOON 12-2				PM 4-6				Off Peak Volumes		
All Speeds		Volume	↔		%	Volume	↔		%	Volume	↔		%	Volume	↔	
		27			9%	41			13%	59			19%	188		

Direction	Percentiles					
	15th	50th	Average	85th	95th	ADT
	20	25	25	30	34	315
Summary	Pace					
	10mph Pace	# in Pace	% in Pace	Number of Vehicles >= 25 MPH	% of Vehicles >= 25 MPH	
	20 - 29	222	70.48%	168	53.33%	

SPEED

618 SW Colleen Ave

Day: Wednesday
Date: 4/14/2021

City: Port St. Lucie
Project #: FL21_140076_024

Summary

Time	< 15	15 - 19	20 - 24	25 - 29	30 - 34	35 - 39	40 - 44	45 - 49	50 - 54	55 - 59	60 - 64	65 - 69	70 +	Total
00:00 AM	0	1	0	0	0	0	0	0	0	0	0	0	0	1
01:00	1	0	1	0	0	0	0	0	0	0	0	0	0	2
02:00	0	0	1	1	0	0	0	0	0	0	0	0	0	2
03:00	0	0	1	0	0	0	0	0	0	0	0	0	0	1
04:00	3	0	0	0	0	1	0	0	0	0	0	0	0	4
05:00	0	0	0	1	0	0	0	0	0	0	0	0	0	1
06:00	2	1	3	2	3	1	0	0	0	0	0	0	0	12
07:00	1	2	1	3	4	0	1	0	0	0	0	0	0	12
08:00	3	3	3	5	2	2	0	0	0	0	0	0	0	18
09:00	4	5	3	8	3	2	0	0	0	0	0	0	0	25
10:00	2	3	2	2	4	0	1	0	0	0	0	0	0	14
11:00	0	2	2	3	2	1	0	0	0	0	0	0	0	10
12:00 PM	0	3	4	3	1	0	0	0	0	0	0	0	0	11
13:00	4	4	2	8	3	0	0	0	0	0	0	0	0	21
14:00	2	3	5	7	4	2	0	0	0	0	0	0	0	23
15:00	3	0	5	4	4	1	0	0	0	0	0	0	0	17
16:00	4	6	4	1	5	1	2	0	0	0	0	0	0	23
17:00	1	6	3	7	3	0	0	0	0	0	0	0	0	20
18:00	4	5	6	8	2	0	0	0	0	0	0	0	0	25
19:00	2	8	2	3	2	2	0	0	0	0	0	0	0	19
20:00	5	3	3	6	3	0	0	0	0	0	0	0	0	20
21:00	1	2	2	4	2	0	0	0	0	0	0	0	0	11
22:00	2	0	3	0	0	0	0	0	0	0	0	0	0	5
23:00	0	0	0	0	0	0	0	0	0	0	0	0	0	0
Totals	44	57	56	76	47	13	4							297
% of Totals	15%	19%	19%	26%	16%	4%	1%							100%

AM Volumes	16	17	17	25	18	7	2	0	0	0	0	0	0	102
% AM	5%	6%	6%	8%	6%	2%	1%							34%
AM Peak Hour	09:00	09:00	06:00	09:00	07:00	08:00	07:00							09:00
Volume	4	5	3	8	4	2	1							25
PM Volumes	28	40	39	51	29	6	2	0	0	0	0	0	0	195
% PM	9%	13%	13%	17%	10%	2%	1%							66%
PM Peak Hour	20:00	19:00	18:00	13:00	16:00	14:00	16:00							18:00
Volume	5	8	6	8	5	2	2							25
Directional Peak Periods		AM 7-9				NOON 12-2			PM 4-6			Off Peak Volumes		
All Speeds		Volume		%	Volume		%	Volume		%	Volume		%	
		30	↔	10%	32	↔	11%	43	↔	14%	192	↔	65%	

Direction	Percentiles					
	15th	50th	Average	85th	95th	ADT
	15	24	23	32	36	297
Summary	Pace					
	10mph Pace	# in Pace	% in Pace	Number of Vehicles >= 25 MPH	% of Vehicles >= 25 MPH	
	20 - 29	132	44.44%	140	47.14%	

SPEED

5847 NW Corso Ave

Day: Wednesday
Date: 4/14/2021

City: Port St. Lucie
Project #: FL21_140076_010

Summary

Time	< 15	15 - 19	20 - 24	25 - 29	30 - 34	35 - 39	40 - 44	45 - 49	50 - 54	55 - 59	60 - 64	65 - 69	70 +	Total
00:00 AM	0	0	0	0	0	0	0	0	0	0	0	0	0	0
01:00	0	0	0	0	0	0	0	0	0	0	0	0	0	0
02:00	0	0	0	0	0	0	0	0	0	0	0	0	0	0
03:00	0	0	0	0	0	0	0	0	0	0	0	0	0	0
04:00	0	0	0	1	0	0	0	0	0	0	0	0	0	1
05:00	0	0	0	1	0	0	0	0	0	0	0	0	0	1
06:00	0	0	1	2	0	0	0	0	0	0	0	0	0	3
07:00	3	4	1	1	0	0	0	0	0	0	0	0	0	9
08:00	0	4	2	1	0	0	0	0	0	0	0	0	0	7
09:00	2	2	6	1	1	0	0	0	0	0	0	0	0	12
10:00	1	1	0	3	1	0	0	0	0	0	0	0	0	6
11:00	2	1	0	2	0	0	0	0	0	0	0	0	0	5
12:00 PM	1	0	1	0	1	0	0	0	0	0	0	0	0	3
13:00	1	2	4	4	0	0	0	0	0	0	0	0	0	11
14:00	1	1	2	2	0	0	0	0	0	0	0	0	0	6
15:00	1	1	1	4	2	0	0	0	0	0	0	0	0	9
16:00	2	2	1	2	2	0	0	0	0	0	0	0	0	9
17:00	2	2	4	3	1	0	0	0	0	0	0	0	0	12
18:00	1	1	2	0	1	1	0	0	0	0	0	0	0	6
19:00	1	4	2	3	0	0	0	0	0	0	0	0	0	10
20:00	0	0	0	1	1	0	0	0	0	0	0	0	0	2
21:00	0	0	0	1	0	0	0	0	0	0	0	0	0	1
22:00	0	0	0	1	1	0	0	0	0	0	0	0	0	2
23:00	0	0	0	0	0	0	0	0	0	0	0	0	0	0
Totals	18	25	27	33	11	1								115
% of Totals	16%	22%	23%	29%	10%	1%								100%

AM Volumes	8	12	10	12	2	0	0	0	0	0	0	0	0	44		
% AM	7%	10%	9%	10%	2%									38%		
AM Peak Hour	07:00	07:00	09:00	10:00	09:00									09:00		
Volume	3	4	6	3	1									12		
PM Volumes	10	13	17	21	9	1	0	0	0	0	0	0	0	71		
% PM	9%	11%	15%	18%	8%	1%								62%		
PM Peak Hour	16:00	19:00	13:00	13:00	15:00	18:00								17:00		
Volume	2	4	4	4	2	1								12		
Directional Peak Periods		AM 7-9				NOON 12-2				PM 4-6				Off Peak Volumes		
All Speeds		Volume	↔		%	Volume	↔		%	Volume	↔		%	Volume	↔	
		16			14%	14			12%	21			18%	64		

Direction	Percentiles					
	15th	50th	Average	85th	95th	ADT
	15	23	22	29	33	115
Summary	Pace					
	10mph Pace	# in Pace	% in Pace	Number of Vehicles >= 25 MPH	% of Vehicles >= 25 MPH	
	20 - 29	60	52.17%	45	39.13%	

SPEED

5332 NW Conley Dr

Day: Wednesday
Date: 4/14/2021

City: Port St. Lucie
Project #: FL21_140076_011

Summary

Time	< 15	15 - 19	20 - 24	25 - 29	30 - 34	35 - 39	40 - 44	45 - 49	50 - 54	55 - 59	60 - 64	65 - 69	70 +	Total
00:00 AM	0	0	0	0	0	0	0	0	0	0	0	0	0	0
01:00	0	0	1	0	0	0	0	0	0	0	0	0	0	1
02:00	0	0	0	0	0	0	0	0	0	0	0	0	0	0
03:00	0	0	0	0	0	0	0	0	0	0	0	0	0	0
04:00	0	0	0	1	0	0	0	0	0	0	0	0	0	1
05:00	0	1	4	1	0	0	0	0	0	0	0	0	0	6
06:00	0	2	17	1	3	0	0	0	0	0	0	0	0	23
07:00	0	8	21	11	0	0	0	0	0	0	0	0	0	40
08:00	1	9	11	9	1	0	0	0	0	0	0	0	0	31
09:00	1	4	19	4	0	0	0	0	0	0	0	0	0	28
10:00	0	5	13	9	2	0	0	0	0	0	0	0	0	29
11:00	0	8	10	3	0	0	0	0	0	0	0	0	0	21
12:00 PM	1	5	14	9	0	0	0	0	0	0	0	0	0	29
13:00	5	10	16	5	0	0	0	0	0	0	0	0	0	36
14:00	1	6	23	7	1	0	0	0	0	0	0	0	0	38
15:00	1	6	22	8	2	0	0	0	0	0	0	0	0	39
16:00	0	10	31	8	1	0	0	0	0	0	0	0	0	50
17:00	0	13	20	10	2	0	0	0	0	0	0	0	0	45
18:00	0	8	19	8	0	0	0	0	0	0	0	0	0	35
19:00	0	6	16	3	1	0	0	0	0	0	0	0	0	26
20:00	0	4	11	7	0	0	0	0	0	0	0	0	0	22
21:00	0	2	5	3	2	0	0	0	0	0	0	0	0	12
22:00	0	2	7	2	0	0	0	0	0	0	0	0	0	11
23:00	0	0	4	1	0	0	0	0	0	0	0	0	0	5
Totals	10	109	284	110	15									528
% of Totals	2%	21%	54%	21%	3%									100%

AM Volumes	2	37	96	39	6	0	0	0	0	0	0	0	0	180
% AM	0%	7%	18%	7%	1%									34%
AM Peak Hour	08:00	08:00	07:00	07:00	06:00									07:00
Volume	1	9	21	11	3									40
PM Volumes	8	72	188	71	9	0	0	0	0	0	0	0	0	348
% PM	2%	14%	36%	13%	2%									66%
PM Peak Hour	13:00	17:00	16:00	17:00	15:00									16:00
Volume	5	13	31	10	2									50
Directional Peak Periods		AM 7-9			NOON 12-2			PM 4-6			Off Peak Volumes			
All Speeds		Volume	%		Volume	%		Volume	%		Volume	%		
		71	↔	13%	65	↔	12%	95	↔	18%	297	↔	56%	

Direction	Percentiles					
	15th	50th	Average	85th	95th	ADT
	18	23	23	27	29	528
Summary	Pace					
	10mph Pace	# in Pace	% in Pace	Number of Vehicles >= 25 MPH	% of Vehicles >= 25 MPH	
	20 - 29	394	74.62%	125	23.67%	

SPEED

780 SW McCall Rd

Day: Wednesday
Date: 7/7/2021City: Port Saint Lucie
Project #: FL21_130146_004**Summary**

Time	< 15	15 - 19	20 - 24	25 - 29	30 - 34	35 - 39	40 - 44	45 - 49	50 - 54	55 - 59	60 - 64	65 - 69	70 +	Total
00:00 AM	0	0	0	1	1	0	0	0	0	0	0	0	0	2
01:00	0	0	1	0	0	1	0	0	0	0	0	0	0	2
02:00	0	0	0	0	1	0	0	0	0	0	0	0	0	1
03:00	0	0	1	1	0	0	0	0	0	0	0	0	0	2
04:00	0	1	0	1	1	0	0	0	0	0	0	0	0	3
05:00	0	0	8	7	0	0	0	0	0	0	0	0	0	15
06:00	1	4	4	8	7	2	1	0	0	0	0	0	0	27
07:00	0	2	7	13	7	3	2	0	0	0	0	0	0	34
08:00	0	6	10	10	7	3	2	0	0	0	0	0	0	38
09:00	1	2	6	1	6	0	2	1	0	0	0	0	0	19
10:00	1	1	8	7	4	2	0	0	0	0	0	0	0	23
11:00	1	0	7	5	5	1	0	0	0	0	0	0	0	19
12:00 PM	0	4	6	10	5	1	1	0	0	0	0	0	0	27
13:00	0	1	7	11	5	1	0	0	0	0	0	0	0	25
14:00	0	1	8	5	6	1	1	0	0	0	0	0	0	22
15:00	1	3	7	4	5	5	0	0	0	0	0	0	0	25
16:00	0	1	8	7	13	5	1	0	0	0	0	0	0	35
17:00	0	1	9	12	16	6	2	0	0	0	0	0	0	46
18:00	1	0	3	8	6	4	0	0	0	0	0	0	0	22
19:00	0	3	5	18	9	2	0	0	0	0	0	0	0	37
20:00	2	2	7	11	7	2	2	0	0	0	0	0	0	33
21:00	0	0	4	7	7	1	1	0	0	0	0	0	0	20
22:00	0	2	5	3	4	5	1	1	0	0	0	0	0	21
23:00	1	1	4	1	0	0	0	0	0	0	0	0	0	7
Totals	9	35	125	151	122	45	16	2						505
% of Totals	2%	7%	25%	30%	24%	9%	3%	0%						100%

AM Volumes	4	16	52	54	39	12	7	1	0	0	0	0	0	185	
% AM	1%	3%	10%	11%	8%	2%	1%	0%						37%	
AM Peak Hour	06:00	08:00	08:00	07:00	06:00	07:00	07:00	09:00						08:00	
Volume	1	6	10	13	7	3	2	1						38	
PM Volumes	5	19	73	97	83	33	9	1	0	0	0	0	0	320	
% PM	1%	4%	14%	19%	16%	7%	2%	0%						63%	
PM Peak Hour	20:00	12:00	17:00	19:00	17:00	17:00	17:00	22:00						17:00	
Volume	2	4	9	18	16	6	2	1						46	
Directional Peak Periods			AM 7-9		NOON 12-2		PM 4-6		Off Peak Volumes						
All Speeds	Volume		%		Volume		%		Volume		%		Volume		%
	72		14%		52		10%		81		16%		300		59%

Direction	Percentiles					
	15th	50th	Average	85th	95th	ADT
	21	28	28	34	39	505
Summary	Pace					
	10mph Pace	# in Pace	% in Pace	Number of Vehicles >= 25 MPH	% of Vehicles >= 25 MPH	
	20 - 29	276	54.65%	336	66.53%	

SPEED

728 SW Sardinia Ave

Day: Wednesday
Date: 7/7/2021

City: Port Saint Lucie
Project #: FL21_130146_005

Summary

Time	< 15	15 - 19	20 - 24	25 - 29	30 - 34	35 - 39	40 - 44	45 - 49	50 - 54	55 - 59	60 - 64	65 - 69	70 +	Total
00:00 AM	0	1	1	0	0	0	0	0	0	0	0	0	0	2
01:00	0	0	0	0	0	0	0	0	0	0	0	0	0	0
02:00	0	0	0	0	0	0	0	0	0	0	0	0	0	0
03:00	2	0	1	1	0	0	0	0	0	0	0	0	0	4
04:00	1	0	0	0	0	0	0	0	0	0	0	0	0	1
05:00	1	0	1	0	0	0	0	0	0	0	0	0	0	2
06:00	0	3	1	2	0	0	0	0	0	0	0	0	0	6
07:00	4	0	4	2	0	0	0	0	0	0	0	0	0	10
08:00	1	1	1	2	2	0	0	0	0	0	0	0	0	7
09:00	2	1	1	1	1	0	0	0	0	0	0	0	0	6
10:00	2	3	3	0	0	0	0	0	0	0	0	0	0	8
11:00	1	2	2	2	3	0	0	0	0	0	0	0	0	10
12:00 PM	7	2	2	0	0	0	0	0	0	0	0	0	0	11
13:00	1	3	0	3	1	0	0	0	0	0	0	0	0	8
14:00	3	2	2	0	0	0	0	0	0	0	0	0	0	7
15:00	0	4	2	3	1	0	0	0	0	0	0	0	0	10
16:00	0	1	1	1	0	1	0	0	0	0	0	0	0	4
17:00	2	2	2	0	0	0	0	0	0	0	0	0	0	6
18:00	0	3	4	0	0	0	0	0	0	0	0	0	0	7
19:00	4	0	2	1	0	0	0	0	0	0	0	0	0	7
20:00	2	0	1	1	0	0	0	0	0	0	0	0	0	4
21:00	1	2	0	2	1	0	0	0	0	0	0	0	0	6
22:00	1	1	0	0	0	0	0	0	0	0	0	0	0	2
23:00	1	0	0	0	0	0	0	0	0	0	0	0	0	1
Totals	36	31	31	21	9	1								129
% of Totals	28%	24%	24%	16%	7%	1%								100%

AM Volumes	14	11	15	10	6	0	0	0	0	0	0	0	0	56
% AM	11%	9%	12%	8%	5%									43%
AM Peak Hour	07:00	06:00	07:00	06:00	11:00									07:00
Volume	4	3	4	2	3									10
PM Volumes	22	20	16	11	3	1	0	0	0	0	0	0	0	73
% PM	17%	16%	12%	9%	2%	1%								57%
PM Peak Hour	12:00	15:00	18:00	13:00	13:00	16:00								12:00
Volume	7	4	4	3	1	1								11

Directional Peak Periods All Speeds	AM 7-9		NOON 12-2		PM 4-6		Off Peak Volumes	
	Volume	%	Volume	%	Volume	%	Volume	%
	17	↔ 13%	19	↔ 15%	10	↔ 8%	83	↔ 64%

Direction	Percentiles					
	15th	50th	Average	85th	95th	ADT
	10	20	19	28	32	129
Summary	Pace					
	10mph Pace	# in Pace	% in Pace	Number of Vehicles >= 25 MPH	% of Vehicles >= 25 MPH	
	15 - 24	62	48.06%	31	24.03%	

SPEED

3856 SW Hainlin St

Day: Wednesday
Date: 7/7/2021City: Port Saint Lucie
Project #: FL21_130146_006**Summary**

Time	< 15	15 - 19	20 - 24	25 - 29	30 - 34	35 - 39	40 - 44	45 - 49	50 - 54	55 - 59	60 - 64	65 - 69	70 +	Total
00:00 AM	0	0	0	0	0	0	0	0	0	0	0	0	0	0
01:00	0	0	0	0	0	0	0	0	0	0	0	0	0	0
02:00	0	0	1	2	0	1	0	0	0	0	0	0	0	4
03:00	0	0	0	2	0	0	1	0	0	0	0	0	0	3
04:00	0	0	0	4	1	0	0	0	0	0	0	0	0	5
05:00	1	0	2	3	0	0	0	0	0	0	0	0	0	6
06:00	1	4	6	3	1	0	0	0	0	0	0	0	0	15
07:00	1	2	6	11	2	1	0	0	0	0	0	0	0	23
08:00	0	3	6	8	3	1	0	0	0	0	0	0	0	21
09:00	1	3	4	6	4	1	0	0	0	0	0	0	0	19
10:00	0	2	2	5	4	0	0	0	0	0	0	0	0	13
11:00	0	1	6	8	2	0	0	0	0	0	0	0	0	17
12:00 PM	0	2	7	6	5	1	0	0	0	0	0	0	0	21
13:00	1	3	4	8	4	0	0	0	0	0	0	0	0	20
14:00	0	3	7	8	1	0	0	0	0	0	0	0	0	19
15:00	2	1	4	3	7	0	0	0	0	0	0	0	0	17
16:00	1	4	3	6	1	1	0	0	0	0	0	0	0	16
17:00	0	1	4	11	4	1	0	0	0	0	0	0	0	21
18:00	0	1	6	11	2	0	0	0	0	0	0	0	0	20
19:00	0	1	2	7	2	0	0	0	0	0	0	0	0	12
20:00	0	1	5	8	1	0	0	0	0	0	0	0	0	15
21:00	0	1	0	6	1	0	0	0	0	0	0	0	0	8
22:00	0	0	3	0	0	0	0	0	0	0	0	0	0	3
23:00	0	0	1	2	0	1	0	0	0	0	0	0	0	4
Totals	8	33	79	128	45	8	1							302
% of Totals	3%	11%	26%	42%	15%	3%	0%							100%

AM Volumes	4	15	33	52	17	4	1	0	0	0	0	0	0	126
% AM	1%	5%	11%	17%	6%	1%	0%							42%
AM Peak Hour	05:00	06:00	06:00	07:00	09:00	02:00	03:00							07:00
Volume	1	4	6	11	4	1	1							23
PM Volumes	4	18	46	76	28	4	0	0	0	0	0	0	0	176
% PM	1%	6%	15%	25%	9%	1%								58%
PM Peak Hour	15:00	16:00	12:00	17:00	15:00	12:00								12:00
Volume	2	4	7	11	7	1								21
Directional Peak Periods All Speeds	AM 7-9				NOON 12-2				PM 4-6				Off Peak Volumes	
	Volume		%		Volume		%	Volume		%	Volume		%	
	44	↔	15%	41	↔	14%	37	↔	12%	180	↔	60%		

Direction	Percentiles					
	15th	50th	Average	85th	95th	ADT
	20	26	26	31	34	302
Summary	Pace					
	10mph Pace	# in Pace	% in Pace	Number of Vehicles >= 25 MPH	% of Vehicles >= 25 MPH	
	20 - 29	207	68.54%	182	60.26%	

SPEED

236 SW Covington Rd

Day: Wednesday
Date: 4/7/2021

City: Port St. Lucie
Project #: FL21_140076_014

Summary

Time	< 15	15 - 19	20 - 24	25 - 29	30 - 34	35 - 39	40 - 44	45 - 49	50 - 54	55 - 59	60 - 64	65 - 69	70 +	Total
00:00 AM	0	0	0	0	0	0	0	0	0	0	0	0	0	0
01:00	0	0	0	0	0	0	0	0	0	0	0	0	0	0
02:00	0	0	0	0	0	0	0	0	0	0	0	0	0	0
03:00	0	0	0	0	0	0	0	0	0	0	0	0	0	0
04:00	0	0	0	0	0	0	0	0	0	0	0	0	0	0
05:00	0	0	0	0	0	0	0	0	0	0	0	0	0	0
06:00	0	0	0	0	0	0	0	0	0	0	0	0	0	0
07:00	0	1	0	0	0	0	0	0	0	0	0	0	0	1
08:00	0	0	0	1	0	0	0	0	0	0	0	0	0	1
09:00	0	1	1	1	0	0	0	0	0	0	0	0	0	3
10:00	0	1	1	0	0	0	0	0	0	0	0	0	0	2
11:00	0	0	0	0	1	0	0	0	0	0	0	0	0	1
12:00 PM	2	0	0	1	1	0	0	0	0	0	0	0	0	4
13:00	0	2	2	1	0	0	0	0	0	0	0	0	0	5
14:00	2	0	0	0	1	0	0	0	0	0	0	0	0	3
15:00	2	0	0	0	0	0	0	0	0	0	0	0	0	2
16:00	0	1	0	0	0	0	0	0	0	0	0	0	0	1
17:00	0	0	0	2	1	0	0	0	0	0	0	0	0	3
18:00	0	1	2	0	0	0	0	0	0	0	0	0	0	3
19:00	1	0	0	0	0	0	0	0	0	0	0	0	0	1
20:00	0	1	0	0	1	0	0	0	0	0	0	0	0	2
21:00	1	0	0	0	0	0	0	0	0	0	0	0	0	1
22:00	1	0	0	0	0	0	0	0	0	0	0	0	0	1
23:00	0	0	0	0	0	0	0	0	0	0	0	0	0	0
Totals	9	8	6	6	5									34
% of Totals	26%	24%	18%	18%	15%									100%

AM Volumes	0	3	2	2	1	0	0	0	0	0	0	0	0	8		
% AM		9%	6%	6%	3%									24%		
AM Peak Hour		07:00	09:00	08:00	11:00									09:00		
Volume		1	1	1	1									3		
PM Volumes	9	5	4	4	4	0	0	0	0	0	0	0	0	26		
% PM	26%	15%	12%	12%	12%									76%		
PM Peak Hour	12:00	13:00	13:00	17:00	12:00									13:00		
Volume	2	2	2	2	1									5		
Directional Peak Periods		AM 7-9			NOON 12-2			PM 4-6			Off Peak Volumes					
All Speeds		Volume	↔		%	Volume	↔		%	Volume	↔		%	Volume	↔	
		2			6%	9			26%	4			12%	19		

Direction	Percentiles					
	15th	50th	Average	85th	95th	ADT
	11	20	20	30	33	34
Summary	Pace					
	10mph Pace	# in Pace	% in Pace	Number of Vehicles >= 25 MPH	% of Vehicles >= 25 MPH	
	15 - 24	14	41.18%	11	32.35%	

SPEED

1372 SW Edinburgh Dr

Day: Wednesday
Date: 4/7/2021

City: Sacramento
Project #: MN20_200000_001

Summary

Time	< 15	15 - 19	20 - 24	25 - 29	30 - 34	35 - 39	40 - 44	45 - 49	50 - 54	55 - 59	60 - 64	65 - 69	70 +	Total
00:00 AM	0	0	1	0	0	0	0	0	0	0	0	0	0	1
01:00	0	1	1	4	0	0	0	0	0	0	0	0	0	6
02:00	0	0	0	0	0	0	0	0	0	0	0	0	0	0
03:00	0	0	1	0	0	0	0	0	0	0	0	0	0	1
04:00	0	3	4	1	2	0	0	0	0	0	0	0	0	10
05:00	2	2	6	6	1	0	1	0	0	0	0	0	0	18
06:00	4	3	9	11	2	1	0	0	0	0	0	0	0	30
07:00	0	4	28	16	4	1	0	0	0	0	0	0	0	53
08:00	2	9	20	10	3	0	0	0	0	0	0	0	0	44
09:00	0	3	14	14	2	0	0	0	0	0	0	0	0	33
10:00	1	9	11	4	2	0	0	0	0	0	0	0	0	27
11:00	1	13	14	5	2	0	0	0	0	0	0	0	0	35
12:00 PM	2	3	18	10	0	1	0	0	0	0	0	0	0	34
13:00	0	5	13	13	2	0	0	0	0	0	0	0	0	33
14:00	2	5	15	7	2	2	0	1	0	0	0	0	0	34
15:00	2	10	24	17	2	0	1	1	0	0	0	0	0	57
16:00	1	8	16	17	1	2	0	0	0	0	0	0	0	45
17:00	1	6	28	20	3	0	0	0	0	0	0	0	0	58
18:00	0	6	20	11	3	2	1	0	0	0	0	0	0	43
19:00	2	9	13	13	4	0	0	0	0	0	0	0	0	41
20:00	3	1	9	6	1	0	0	0	0	0	0	0	0	20
21:00	1	3	12	4	0	0	0	0	0	0	0	0	0	20
22:00	1	5	4	0	1	1	0	0	0	0	0	0	0	12
23:00	0	1	2	2	1	0	0	0	0	0	0	0	0	6
Totals	25	109	283	191	38	10	3	2						661
% of Totals	4%	16%	43%	29%	6%	2%	0%	0%						100%

AM Volumes	10	47	109	71	18	2	1	0	0	0	0	0	0	258
% AM	2%	7%	16%	11%	3%	0%	0%							39%
AM Peak Hour	06:00	11:00	07:00	07:00	07:00	06:00	05:00							07:00
Volume	4	13	28	16	4	1	1							53
PM Volumes	15	62	174	120	20	8	2	2	0	0	0	0	0	403
% PM	2%	9%	26%	18%	3%	1%	0%	0%						61%
PM Peak Hour	20:00	15:00	17:00	17:00	19:00	14:00	15:00	14:00						17:00
Volume	3	10	28	20	4	2	1	1						58
Directional Peak Periods		AM 7-9				NOON 12-2			PM 4-6			Off Peak Volumes		
All Speeds		Volume		%	Volume		%	Volume		%	Volume		%	
		97	↔	15%	67	↔	10%	103	↔	16%	394	↔	60%	

Direction	Percentiles					
	15th	50th	Average	85th	95th	ADT
	18	23	24	29	33	661
Summary	Pace					
	10mph Pace	# in Pace	% in Pace	Number of Vehicles >= 25 MPH	% of Vehicles >= 25 MPH	
	20 - 29	474	71.71%	244	36.91%	

SPEED

4646 SW Tacoma St

Day: Wednesday
Date: 4/7/2021

City: Port St. Lucie
Project #: FL21_140076_005

Summary

Time	< 15	15 - 19	20 - 24	25 - 29	30 - 34	35 - 39	40 - 44	45 - 49	50 - 54	55 - 59	60 - 64	65 - 69	70 +	Total
00:00 AM	0	0	0	0	0	0	0	0	0	0	0	0	0	0
01:00	0	0	0	0	0	0	0	0	0	0	0	0	0	0
02:00	0	0	2	0	0	0	0	0	0	0	0	0	0	2
03:00	0	0	0	2	0	0	0	0	0	0	0	0	0	2
04:00	2	0	1	0	0	0	0	0	0	0	0	0	0	3
05:00	1	0	2	0	0	0	0	0	0	0	0	0	0	3
06:00	2	4	8	0	1	0	0	0	0	0	0	0	0	15
07:00	0	3	3	4	3	0	0	0	0	0	0	0	0	13
08:00	2	3	10	3	1	0	0	0	0	0	0	0	0	19
09:00	1	4	6	7	2	1	0	0	0	0	0	0	0	21
10:00	0	0	4	6	0	1	0	0	0	0	0	0	0	11
11:00	1	2	10	4	0	0	0	0	0	0	0	0	0	17
12:00 PM	0	2	2	7	3	0	0	0	0	0	0	0	0	14
13:00	2	1	5	3	3	0	0	0	0	0	0	0	0	14
14:00	2	1	7	9	1	0	0	0	0	0	0	0	0	20
15:00	5	7	12	5	1	0	0	0	0	0	0	0	0	30
16:00	6	8	11	12	6	1	0	0	0	0	0	0	0	44
17:00	2	2	8	13	3	0	0	0	0	0	0	0	0	28
18:00	0	3	11	9	4	0	0	0	0	0	0	0	0	27
19:00	1	4	6	7	2	0	0	0	0	0	0	0	0	20
20:00	2	3	7	2	1	0	0	0	0	0	0	0	0	15
21:00	0	1	3	4	3	0	0	0	0	0	0	0	0	11
22:00	0	0	3	1	1	1	0	0	0	0	0	0	0	6
23:00	0	0	3	1	0	0	0	0	0	0	0	0	0	4
Totals	29	48	124	99	35	4								339
% of Totals	9%	14%	37%	29%	10%	1%								100%

AM Volumes	9	16	46	26	7	2	0	0	0	0	0	0	0	106	
% AM	3%	5%	14%	8%	2%	1%								31%	
AM Peak Hour	04:00	06:00	08:00	09:00	07:00	09:00								09:00	
Volume	2	4	10	7	3	1								21	
PM Volumes	20	32	78	73	28	2	0	0	0	0	0	0	0	233	
% PM	6%	9%	23%	22%	8%	1%								69%	
PM Peak Hour	16:00	16:00	15:00	17:00	16:00	16:00								16:00	
Volume	6	8	12	13	6	1								44	
Directional Peak Periods		AM 7-9				NOON 12-2				PM 4-6				Off Peak Volumes	
All Speeds		Volume		%		Volume		%		Volume		%	Volume	%	
		32	↔	9%		28	↔	8%		72	↔	21%	207	↔	61%

Direction	Percentiles					
	15th	50th	Average	85th	95th	ADT
	17	24	23	29	33	339
Summary	Pace					
	10mph Pace	# in Pace	% in Pace	Number of Vehicles >= 25 MPH	% of Vehicles >= 25 MPH	
	20 - 29	223	65.78%	138	40.71%	