

INTELLIGENT TRANSPORTATION SYSTEMS PLANS

GATLIN BOULEVARD

FROM VILLAGE PARKWAY TO SAVONA BOULEVARD

SHEET INDEX

- 1 KEY SHEET
- 2 TABULATION OF QUANTITIES
- 3 GENERAL NOTES
- 4 ITS PLAN

FM 444707-1-58-01

(FEDERAL FUNDS)

PREPARED FOR

THE CITY OF PORT ST. LUCIE

GATLIN BOULEVARD POSTED SPEED: 45 MPH

CONSULTANTS

CIVIL ENGINEER

PLANS PREPARED BY:
 MACKENZIE ENGINEERING & PLANNING, INC.
 1172 SW 30TH STREET, SUITE 500,
 PALM CITY, FL 34990
 CERT OF AUTH: CA29013
 SHAUN G. MACKENZIE, P.E.
 PROFESSIONAL ENGINEER #61751
 (772) 286-8030

NOTE: THE SCALE OF THESE PLANS MAY
 HAVE CHANGED DUE TO REPRODUCTION.

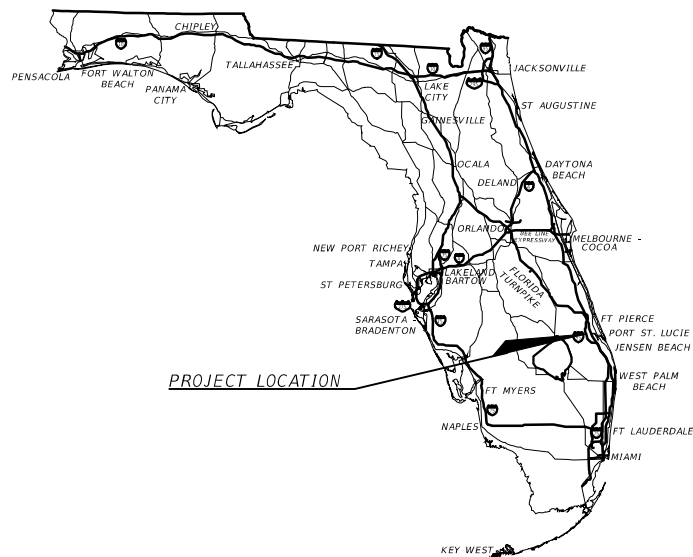
SIGNALIZATION SHOP DRAWINGS
 TO BE SUBMITTED TO:

MACKENZIE ENGINEERING AND PLANNING, INC.
 1172 SW 30TH STREET, SUITE 500
 PALM CITY, FLORIDA 34990
 SHAUN G. MACKENZIE, P.E.

LOCATION MAP

NTS

PORT ST. LUCIE, FLORIDA



THESE PLANS HAVE BEEN PREPARED IN GENERAL ACCORDANCE
 WITH AND GOVERNED BY STANDARDS AND SPECIFICATIONS OF THE CITY OF PORT
 ST. LUCIE PUBLIC WORKS DEPARTMENT AND FLORIDA DEPARTMENT OF
 TRANSPORTATION STANDARD PLANS AND SPECIFICATIONS FOR ROAD CONSTRUCTION
 (FY 2021-22), AS AMENDED BY CONTRACT DOCUMENTS.

GOVERNING SPECIFICATIONS:
 CITY OF PORT ST. LUCIE PUBLIC WORKS DEPARTMENT ENGINEERING STANDARDS FOR
 LAND DEVELOPMENT (2022), AS AMENDED BY CONTRACT DOCUMENTS.

REVISIONS				MACKENZIE ENGINEERING & PLANNING, INC. 1172 SW 30TH STREET, SUITE 500, PALM CITY, FLORIDA, 34990 C.A. 29013 SHAUN G. MACKENZIE P.E. P.E. NO. 61751	CITY OF PORT ST. LUCIE 121 SW PORT ST. LUCIE BLVD PORT ST. LUCIE BLVD, FL 34984		<i>KEY SHEET</i>	SHEET NO.
DATE	DESCRIPTION	DATE	DESCRIPTION		COUNTY	ROAD NO.		1
4/6/22	FDOT CONSTRUCTABILITY PH COMMENTS				ST. LUCIE COUNTY	GATLIN BOULEVARD		
6/7/22	SLC COMMENTS #1							

THE OFFICIAL RECORD OF THIS SHEET IS THE ELECTRONIC FILE DIGITALLY SIGNED AND SEALED UNDER RULE 61G15-23.004, F.A.C.

TABULATION OF QUANTITIES

PAY ITEM NUMBER	DESCRIPTION	UNIT	GATLIN BLVD &												GRAND TOTAL		REF. SHEET
			VILLAGE PKWY		BRESCIA ST		SAVAGE BLVD		IMPORT DR		ROSSER BLVD		SAVONA BLVD				
			1		2		3		4		5		6				
			PLAN	FINAL	PLAN	FINAL	PLAN	FINAL	PLAN	FINAL	PLAN	FINAL	PLAN	FINAL	PLAN	FINAL	
101-1	MOBILIZATION	LS													1		
102-1	MAINTENANCE OF TRAFFIC	LS													1		
632-7-1	SIGNAL CABLE (F&I)	PI	1		1		1		1		1		1		6		
633-8-1	MULTI-CONDUCTOR COMMUNICATION CABLE (F&I)	LF	790		695		635		510		440		605		3675		
660-4-12	VEHICLE DETECTION SYSTEM, VIDEO, F&I (INSYNC SYSTEM)	EA	4		4		4		4		3		4		23		
660-4-60	VEHICLE DETECTION SYSTEM, VIDEO, REMOVE	EA	4		4		4		4		3		4		23		
671-2-40	TRAFFIC CONTROLLER, MODIFY	EA	1		1		1		1		1		1		6		
680-1-112	ADAPTIVE CTRL SYSTEM CONTROL CABINET EQUIPMENT, F&I	EA	1		1		1		1		1		1		6		
680-1-113	ADAPTIVE CTRL SYSTEM CONTROL ABOVE GROUND EQUIPMENT, F&I	EA	1		1		1		1		1		1		6		

<p align="center">REVISIONS</p> <table border="1"> <thead> <tr> <th>DATE</th> <th>DESCRIPTION</th> <th>DATE</th> <th>DESCRIPTION</th> </tr> </thead> <tbody> <tr> <td>4/6/22</td> <td>FDOT CONSTRUCTABILITY PH COMMENTS</td> <td></td> <td></td> </tr> <tr> <td>6/7/22</td> <td>SLC COMMENTS #1</td> <td></td> <td></td> </tr> </tbody> </table>				DATE	DESCRIPTION	DATE	DESCRIPTION	4/6/22	FDOT CONSTRUCTABILITY PH COMMENTS			6/7/22	SLC COMMENTS #1			<p>MACKENZIE ENGINEERING & PLANNING, INC. 1172 SW 30TH STREET, SUITE 500, PALM CITY, FLORIDA, 34990 C.A. 29013 SHAUN G. MACKENZIE P.E. P.E. NO. 61751</p>	<p>CITY OF PORT ST. LUCIE 121 SW PORT ST. LUCIE BLVD PORT ST. LUCIE BLVD, FL 34984</p> <table border="1"> <thead> <tr> <th>COUNTY</th> <th>ROAD NO.</th> </tr> </thead> <tbody> <tr> <td>ST. LUCIE COUNTY</td> <td>GATLIN BOULEVARD</td> </tr> </tbody> </table>	COUNTY	ROAD NO.	ST. LUCIE COUNTY	GATLIN BOULEVARD	<p align="center">TABULATION OF QUANTITIES</p>	<p>SHEET NO. 2</p>
DATE	DESCRIPTION	DATE	DESCRIPTION																				
4/6/22	FDOT CONSTRUCTABILITY PH COMMENTS																						
6/7/22	SLC COMMENTS #1																						
COUNTY	ROAD NO.																						
ST. LUCIE COUNTY	GATLIN BOULEVARD																						

THE OFFICIAL RECORD OF THIS SHEET IS THE ELECTRONIC FILE DIGITALLY SIGNED AND SEALED UNDER RULE 61G15-23.004, F.A.C.

GENERAL NOTES

- ALL CONSTRUCTION SHALL BE IN ACCORDANCE WITH AND CONFORM TO THE MOST STRINGENT REQUIREMENTS OF THE PROJECT SPECIFICATIONS, THE CITY OF PORT ST. LUCIE PUBLIC WORKS DEPARTMENT ENGINEERING STANDARDS FOR LAND DEVELOPMENT (2022), AND FLORIDA DEPARTMENT OF TRANSPORTATION STANDARD PLANS AND SPECIFICATIONS FOR ROAD CONSTRUCTION (FDOT\FY 2021-22), AND ALL OTHER APPLICABLE FEDERAL, STATE AND LOCAL CODES AND REGULATIONS.
- SUBSURFACE UTILITIES SHOWN ON THE DRAWINGS SHALL BE CONSIDERED APPROXIMATE ONLY. THE ACCURACY OF THIS INFORMATION IS NOT GUARANTEED AND IS NOT TO BE CONSTRUED AS PART OF THE PLANS GOVERNING CONSTRUCTION OF THE PROJECT. THE CONTRACTOR SHALL DETERMINE THE EXACT LOCATION OF ALL EXISTING UTILITIES BEFORE COMMENCING WORK. THE CONTRACTOR IS RESPONSIBLE FOR MAKING HIS OWN DETERMINATION AS TO THE TYPE AND LOCATION OF UNDERGROUND AND OTHER UTILITIES AS MAY BE NECESSARY TO AVOID DAMAGE. THE CONTRACTOR AGREES TO BE FULLY RESPONSIBLE FOR ANY AND ALL DAMAGES WHICH MIGHT BE OCCASIONED BY THE CONTRACTOR'S FAILURE TO EXACTLY LOCATE AND PRESERVE ANY AND ALL UNDERGROUND UTILITIES.
- ALL WORK FOR THIS PROJECT SHALL BE COMPLETED FROM AND WITHIN CITY OF PORT ST. LUCIE RIGHT OF WAY.
- THE CONTRACTOR SHALL NOTIFY THE CITY OF PORT ST. LUCIE PUBLIC WORKS DEPT. TWO (2) FULL BUSINESS DAYS IN ADVANCE OF ANY WORK TO BE CARRIED OUT AT ANY SIGNAL. 772-871-5177
- THE CONTRACTOR SHALL NOTIFY THE UTILITY COMPANIES TO ALLOW THEIR REPRESENTATIVES TO ACCURATELY LOCATE THEIR FACILITIES. THE CONTRACTOR SHALL BE RESPONSIBLE FOR THE COORDINATION WITH THE RESPECTIVE UTILITY COMPANIES DURING ANY UTILITY CONSTRUCTION OR RELOCATION.
- CONTACT SUNSHINE ONE CALL OF FLORIDA AT 811 OR SUNSHINE@11.COM AT LEAST TWO (2) FULL BUSINESS DAYS BEFORE DIGGING. FLORIDA 'SUNSHINE ONE' LOCATES PROCEDURES SHALL BE FOLLOWED AT ALL TIMES. (NOTE: IF THERE IS A TRAFFIC MONITORING SITE ON THE PROJECT OR WITHIN 1 MILE OF THE CONSTRUCTION. THE TRANSPORTATION STATISTICS OFFICE IN TALLAHASSEE SHALL BE ADDED TO THE LIST OF UTILITY OWNERS.)
- THE APPROPRIATE UTILITY COMPANIES SHALL BE NOTIFIED BY THE CONTRACTOR TWO (2) BUSINESS DAYS IN ADVANCE OF ANY EXCAVATION INVOLVING ITS UTILITIES SO THAT A COMPANY REPRESENTATIVE CAN BE PRESENT.

UTILITY OWNER:
CITY OF PORT ST. LUCIE TRAFFIC PAUL JOHNSON 772-871-5182
CITY OF PORT ST. LUCIE UTILITIES COLLEEN JACOBSEN 772-871-5063
FLORIDA CITY GAS HOLLY COOMBS 321-638-3419
FLORIDA POWER AND LIGHT JOEL BRAY 386-586-6403
HOMETOWN CABLE TERRY DAY 772-344-1539
ATT DISTRIBUTION DINO FARRUGGIO 561-997-0240
TRADITION IRRIGATION JOHN GALLAGHER 772-345-5119
COMCAST TONY SPRINGSTEEL 772-321-3425
ELAND ENGINEERING DAVID BORMANN 954-847-2699
CROWN CASTLE FIBERDIG TEAM 888-632-0931x2
- EXISTING DRAINAGE STRUCTURES WITHIN CONSTRUCTION LIMITS SHALL REMAIN, UNLESS OTHERWISE NOTED.
- ANY PUBLIC LAND CORNER OR BENCH MARK WITHIN THE LIMITS OF CONSTRUCTION IS TO BE PROTECTED. IF A CORNER MONUMENT IS IN DANGER OF BEING DESTROYED AND HAS NOT BEEN PROPERLY REFERENCED, THE PROJECT ENGINEER SHOULD NOTIFY THE CITY SURVEYOR. WITHOUT DELAY. BY TELEPHONE.
- THE SIGNAL MAINTAINING AGENCY IS CITY OF PORT ST. LUCIE TRAFFIC OPERATIONS. THE CONTRACTOR SHALL DELIVER ALL TRAFFIC CONTROL DEVICES TO THE CITY OF PORT ST. LUCIE TRAFFIC OPERATIONS, 821 DWYER AVENUE, PORT ST. LUCIE, FLORIDA 34983, BETWEEN THE HOURS OF 7 AM AND 4 PM, MONDAY THRU FRIDAY. CONTACT 772-344-4360 AT LEAST 15 MINUTES PRIOR TO ARRIVAL.
- ALL CONDUIT SHALL BE TWO (2) INCH MINIMUM UNLESS OTHERWISE SPECIFIED IN PLANS. ELECTRICAL POWER SERVICE CONDUIT SHALL CONFORM WITH FDOT STANDARD INDEX # 639-001
- THE CONTRACTOR IS TO USE CAUTION WHEN WORKING IN OR AROUND ALL EXISTING UTILITIES, INCLUDING OVERHEAD POWER LINES. THE CONTRACTOR SHALL EXCAVATE BY HAND WHERE CONFLICTS MAY EXIST.
- LOCATIONS OF UTILITIES SHOWN ON THE PLANS ARE APPROXIMATE ONLY. THE EXACT LOCATION SHALL BE DETERMINED BY THE CONTRACTOR PRIOR TO EXCAVATION.
- THE LOCATIONS OF ALL POLES, PEDESTALS, AND OTHER EQUIPMENT SHALL BE CONSIDERED APPROXIMATE.
- AT THE TIME OF THE FINAL ACCEPTANCE OF THE PROJECT, THE CONTRACTOR SHALL FURNISH (1) COMPLETE SET OF AS-BUILT PLANS, CAD (DWG) DRAWINGS TO EACH OF THE CONTACTS:
CITY OF PORT ST. LUCIE
PUBLIC WORKS DEPARTMENT
121 SW PORT ST. LUCIE BLVD, BLDG B
PORT ST. LUCIE BLVD, FL 34984

SIGNAL NOTES

- INSTALLATION SHALL BE PERFORMED IN ACCORDANCE WITH FDOT STANDARD INDEX 630-695 TRAFFIC SIGNAL AND EQUIPMENT, INTELLIGENT TRANSPORTATION SYSTEMS (ITS), AND CITY OF PORT ST. LUCIE (CPSL) ENGINEERING STANDARDS AND SPECIFICATIONS. WHERE CONFLICTING INFORMATION MAY OCCUR CPSL STANDARDS SHALL TAKE PRECEDENCE.
- IT SHALL BE THE RESPONSIBILITY OF THE CONTRACTOR TO OBTAIN A #8 KEY FROM THE TRAFFIC OPERATIONS COMPOUND AT 821 DWYER AVE TO ACCESS ANY OPERATIONAL TRAFFIC CABINET.
- FOR PROGRAMMED FLASH OPERATION, THE MAJOR STREET IS TO FLASH YELLOW AND THE MINOR STREET IS TO FLASH RED.
- THE CONTROLLER SHALL OPERATE AN APPROVED FLORIDA D.O.T. SIGNAL OPERATING PLAN.
- OPTICAL VEHICLE DETECTORS SHALL BE CAPABLE OF MULTI ZONE DETECTION. DETECTORS SHALL BE MOUNTED ABOVE THE MAST ARM USING ASTRO BRACKET HARDWARE AT A HEIGHT CAPABLE OF THE REQUIRED DETECTION AND AS RECOMMENDED BY THE SYSTEM MANUFACTURER. THE DETECTION SYSTEM SHALL BE EQUIPPED WITH AN LCD MONITOR FOR CONFIGURATION OF THE DETECTOR LOOPS. SHOP DRAWINGS SHALL BE SUBMITTED TO THE CITY OF PORT ST. LUCIE FOR APPROVAL AND MUST COMPLY WITH THE CITY'S VIDEO SYSTEM. ALL VIDEO POWER CABLES, PROCESSORS, AND EQUIPMENT SHALL BE PROVIDED FOR A COMPLETE AND OPERATIONAL VIDEO DETECTION SYSTEM. MANUFACTURERS SHALL BE PRESENT AT TURN ON FOR PROGRAMMING AND SETUP.
- ALL PATCH CABLES, SPLITTERS AND MISC. MATERIALS REQUIRED FOR THE INSTALLATION OF TRAFFIC MONITORING EQUIPMENT SHALL BE FURNISHED AND INSTALLED BY THE CONTRACTOR. INSTALLED PATCH CABLE SHALL MATCH EXISTING PATCH CABLE DIMENSIONS AND TYPE. ANY DEVIATIONS SHALL BE APPROVED BY TRAFFIC DIVISION.
- IT SHALL BE THE RESPONSIBILITY OF THE CONTRACTOR TO VERIFY THAT ALL EQUIPMENT, INCLUDING TRAFFIC MONITORING EQUIPMENT IS FULLY OPERATIONAL BEFORE THE SIGNAL ENTERS ANY STATE OF OPERATION.
- SIGNAL CONDUCTOR SHALL PASS THROUGH HOLE IN PELCO/ASTRO MOUNTING BRACKET, INTO SIGNAL MOUNTING PIPE AND INTO SIGNAL, SO CABLE IS NOT EXPOSED TO THE ELEMENTS.
- CONTRACTOR SHALL NOT USE WIRE NUTS ANYWHERE WITHIN THE CONTROLLER CABINET. STREET LIGHT CIRCUIT OR SIGNAL CIRCUIT, APPROVED CONNECTIONS ARE TERMINAL STRIPS, WATER TIGHT BUTT SPLICES (RUBBER TAPE ELECTRICAL TAPE, SCOTCH COTE) AND SPLIT BOLTS. THERE SHALL BE NO TERMINAL STRIPS IN PEDESTRIAN SIGNAL T-BASES. WATER TIGHT SPLICES ONLY.

- ALL SIGNAL UPRIGHT HAND HOLES SHALL HAVE TERMINAL STRIPS INSTALLED FOR THE TERMINATION OF SIGNAL CONDUCTOR FROM THE CONTROLLER CABINET TO THE SIGNAL HEADS/PEDESTRIAN SIGNALS.
- ALL GROUND WIRING WITHIN PULL BOXES REQUIRING TERMINATION TO GROUND ROD SHALL BE ATTACHED USING CAD WELD IGNITORS.
- SIGNAL CONDUCTOR WITHIN CONTROLLER CABINET SHALL COMPLETELY ENCIRCLE INSIDE OF CABINET BEFORE TERMINATION TO ALLOW SLACK FOR KNOCK DOWNS.
- ALL SPARE SIGNAL CONDUCTOR WITHIN CONTROLLER CABINET SHALL BE TERMINATED DIRECTLY TO GROUND/NEUTRAL BARS.
- ALL SIGNAL CONDUCTOR WITHIN THE UPRIGHT HAND HOLE AND CONTROLLER CABINET SHALL BE PROPERLY LABELED USING FLAG TIE WRAPS.
- ALL DETECTION CAMERA PELCO BRACKETS SHALL BE DRILLED AND TAPPED FOR 1/4-20 SET SCREW AFTER INSTALLATION TO PREVENT CAMERA FROM LAYING OVER IN HIGH WINDS.
- ANTI SEIZE SHALL BE USED ON ALL MOUNTING HARDWARE FOR SIGNAL/CAMERA BRACKETS.
- CONTRACTOR SHALL VERIFY CONDITION OF EXISTING MANAGED FIELD ETHERNET SWITCH LOCATED IN THE CONTROLLER CABINET. ANY DAMAGED OR FAULTY EQUIPMENT SHALL BE REMOVED FOR REPLACEMENT.
- REQUIRED INSTALLATION OF THIS EQUIPMENT SHOULD BE VERIFIED BY CONTACTING PAUL JOHNSON AT 772-871-5182. DEVICE ITEMS THAT SHALL BE INCORPORATED INTO THE SIGNALIZATION PLANS FOR EACH INTERSECTION:

INSYNC ADAPTIVE EQUIPMENT

<u>CABINET</u>	
• INSYNC SHELF MOUNT PROCESSOR	6 PI
• INSYNC EQUIPMENT PANEL	6 PI
• INSYNC SDLC MODULE	6 PI
• INSYNC INTERCEPT MODULE	6 PI
• INSYNC DIN RELAY IV	6 PI
• INSYNC DUAL SERIAL CABLE	6 PI
• INSYNC BIU CABLE, 1 OR 2 BIU	6 PI
• SDLC MODULE POWER CABLE HW 12VDC 2.03A	6 PI
• 3" AND 7" PATCH CABLES	6 PI
• KEYBOARD AND MONITOR	6 PI

<u>DETECTION</u>	
• 14/3 TRAFFIC POWER CABLE IMSA 20-1 STRANDED	6 PI
• CAT6 SHIELDED ETHERNET CABLE	6 PI
• BOSCH DIGITAL CAMERAS FOR VIDEO DETECTION	23 EA
• PELCO CAMERA MOUNT BRACKET	23 EA
• PELCO ASTRO-BRAC MOUNT	23 EA
• PELCO GUSSETTED TUBE - 72"	23 EA
• PELCO CAMERA BRACKET - 5H-514	23 EA
• INLINE ETHERNET SURGE PROTECTION	23 EA
• VERACITY OUTREACH LITE REPEATER	18 EA
• MICROSEMI SINGLE PORT 30W INDUSTRIAL POE INJECTOR	18 EA
• POLYCASE ENCLOSURE FOR REPEATER	18 EA

TRAFFIC CONTROL NOTES

- LANE CLOSURES SHALL BE LIMITED TO DAYTIME FROM 9 AM TO 4 PM.
- TRAFFIC CONTROL PLANS FOR THE PROJECT SHALL COMPLY WITH THE LATEST EDITION OF THE FLORIDA DEPARTMENT OF TRANSPORTATION DESIGN STANDARDS, THE MANUAL ON UNIFORM TRAFFIC CONTROL DEVICES (MUTCD) AND THE STANDARD SPECIFICATIONS FOR ROAD AND BRIDGE CONSTRUCTION. AS A MINIMUM CRITERIA, THE CONTRACTOR MAY BE DIRECTED BY THE PROJECT ENGINEER TO DEVELOP AND IMPLEMENT MODIFICATIONS TO THE TRAFFIC SIGNAL OPERATION (I.E. TIMING AND PHASING FOR SIGNALS LOCATED WITHIN THE PROJECT LIMITS. THE CONTRACTOR'S RESPONSE TIME TO REPORTED MALFUNCTIONS OF THE TRAFFIC SIGNALS WITHIN THE PROJECT LIMITS SHALL BE NO MORE THAN TWO (2) HOURS. AND THE CONTRACTOR SHALL RESTORE ALL MALFUNCTIONING TRAFFIC SIGNAL EQUIPMENT TO ITS LEVEL OF OPERATION PRIOR TO MALFUNCTION WITHIN TWENTY-FOUR (24) HOURS. DURING THIS TIME, THE CONTRACTOR SHALL PROVIDE AT HIS EXPENSE, TEMPORARY TRAFFIC CONTROL DEVICES, FLAGGER PERSONNEL, AND LAW ENFORCEMENT PERSONNEL, AS NECESSARY, TO MAINTAIN A SAFE AND EFFICIENT FLOW OF TRAFFIC AT AFFECTED SIGNALIZED AND UN-SIGNALIZED INTERSECTIONS. THE ENGINEER SHALL APPROVE ALL MODIFICATIONS PRIOR TO THEIR IMPLEMENTATION.
- ALL MAINTENANCE OF TRAFFIC ITEMS REQUIRED BY THE 102 SERIES INDICES SHALL BE SUPPLIED, INSTALLED, AND MAINTAINED TO PROPERLY MAINTAIN TRAFFIC AND DROP OFF CRITERIA IN THE WORK ZONE. REFER TO THE FDOT STANDARD INDEX NO. 102 FOR ADDITIONAL GENERAL INFORMATION
- WORK CONDUCTED ADJACENT TO THE TRAVEL WAY AND OUTSIDE THE SHOULDER SHALL BE IN ACCORDANCE WITH FDOT STANDARD INDEX NO. 102-601.
- WORK CONDUCTED ADJACENT TO THE TRAVEL WAY AND ON THE SHOULDER SHALL BE IN ACCORDANCE WITH FDOT STANDARD INDEX NO. 102-602.
- WORK CONDUCTED WITHIN THE TRAVEL WAY MEDIAN OR OUTSIDE LANE SHALL BE IN ACCORDANCE WITH FDOT STANDARD INDEX NO. 102-613.
- WORK CONDUCTED IN OR NEAR THE INTERSECTION SHALL BE IN ACCORDANCE WITH FDOT STANDARD INDEX NO. 102-615.
- WORK CONDUCTED WHERE SIDEWALKS EXIST SHALL BE IN ACCORDANCE WITH FDOT STANDARD INDEX NO. 102-660.
- NOTIFICATION OF PROPOSED LANE CLOSURES OR TEMPORARY DETOURS SHALL BE ACCOMPLISHED IN WRITING FOURTEEN (14) BUSINESS DAYS IN ADVANCE OF CLOSURE OR DETOUR.
- THE ALTERATION OF TRAFFIC TRAVEL- WAYS TO CREATE A WORK ZONE SHALL NOT COMMENCE UNTIL ALL LABOR AND MATERIALS ARE READY FOR THE CONSTRUCTION IN THAT ZONE.
- REGULATORY SPEED DURING CONSTRUCTION SHALL REMAIN AT THE POSTED SPEED.

PAY ITEM NOTES

101-1	THE CONTRACTOR SHALL PROVIDE ALL NECESSARY EQUIPMENT INCLUDING A TWO-MAN BUCKET OR PLATFORM LIFT TRUCK FOR USE BY THE ENGINEER DURING INSPECTION OF TRAFFIC SIGNALS.
102-1	THE CONTRACTOR SHALL REFURBISH EXISTING PAVEMENT MARKINGS DAMAGED DURING CONSTRUCTION.
632-7-1	VERIFY THE COLOR CODE OF SIGNAL CABLE WITH THE MAINTAINING AGENCY PRIOR TO WIRING INTERSECTION.
633-8-1	CONTRACTOR SHALL ENSURE ADDITIONAL 25 FEET OF CABLE IS PROVIDED IN EACH CONTROLLER CABINET.
671-2-40	CONTRACTOR SHALL DELIVER ALL REMOVED USABLE EQUIPMENT TO: CITY OF PORT ST. LUCIE TRAFFIC OPERATIONS DIVISION 821 SW DWYER AVENUE PORT ST. LUCIE, FL 34983
660-4-12	THE RHYTHM ENGINEERING/INSYNC SYSTEM SHALL BE USED. THE CONTRACTOR SHALL CONTACT SCOTT@RHYTHMTRAFFIC.COM OR 913-227-0603 FOR PURCHASING. THE INSYNC SYSTEM INCLUDES VIDEO CAMERAS WITH PURCHASE OF THE INSYNC SYSTEM. THE CONTRACTOR SHALL SUPPLY THE CAMERA MOUNTING HARDWARE AND CABLING FOR EACH CAMERA. VIDEO CAMERA CABLE RUNS AND INDIVIDUAL CABLES SHALL BE ONE COMPLETE RUN FROM THE CABINET TO CAMERA. A CABLE RUN SHALL CONSIST OF SHIELDED TWISTED PAIR ETHERNET CABLE (STP CAT-6E), WITH SHIELDED RJ45 CONNECTORS THAT ARE ENVIRONMENTALLY HARDENED AND OUTDOOR RATED; IMSA 20-1 TRAFFIC CONTROL CABLE (#14-3 AWG STRANDED COPPER) FOR CAMERA POWER; A DATA ONLY FORWARDING (NON-POE FORWARDING) ETHERNET REPEATER, FOR ETHERNET CABLE (STP CAT-6E) RUNS GREATER THAN 320', AND A COMPATIBLE POWER OVER ETHERNET INJECTOR TO SUPPLY POWER TO THE ETHERNET REPEATER. CABLE RUN DISTANCE SHALL INCLUDE ANY ADDITIONAL ETHERNET (STP CAT-6E) CABLE SLACK.

UNIDENTIFIED AREAS OF CONTAMINATION:

- WHEN ENCOUNTERING OR EXPOSING ANY ABNORMAL CONDITION INDICATING THE PRESENCE OF A HAZARDOUS OR TOXIC WASTE, OR CONTAMINANTS, CEASE OPERATIONS IMMEDIATELY IN THE VICINITY AND NOTIFY THE LAP CITY OF PORT ST. LUCIE ENGINEER. THE PRESENCE OF TANKS OR BARRELS; DISCOLORED EARTH, METAL, WOOD, GROUND WATER, ETC.; VISIBLE FUMES; ABNORMAL ODORS; EXCESSIVELY HOT EARTH; SMOKE; OR OTHER CONDITIONS THAT APPEAR ABNORMAL MAY INDICATE HAZARDOUS OR TOXIC WASTES OR CONTAMINANTS AND MUST BE TREATED WITH EXTREME CAUTION.
- MAKE EVERY EFFORT TO MINIMIZE THE SPREAD OF CONTAMINATION INTO UNCONTAMINATED AREAS. IMMEDIATELY PROVIDE FOR THE HEALTH AND SAFETY OF ALL WORKERS AT THE JOB SITE AND MAKE PROVISIONS NECESSARY FOR THE HEALTH AND SAFETY OF THE PUBLIC THAT MAY BE EXPOSED TO ANY POTENTIALLY HAZARDOUS CONDITIONS. PROVISIONS SHALL MEET ALL APPLICABLE LOCAL, STATE, AND FEDERAL LAWS, RULES, REGULATIONS OR CODES COVERING HAZARDOUS CONDITIONS AND WILL BE IN A MANNER COMMENSURATE WITH THE GRAVITY OF THE CONDITIONS.
- THE LAP CITY OF PORT ST. LUCIE ENGINEER (772-871-5111) WILL COORDINATE AND MOBILIZE A QUALIFIED CONTAMINATION ASSESSMENT/REMEDATION (CAR) CONTRACTOR. QUALIFICATIONS OF SUCH CAR CONTRACTOR SHALL INCLUDE, BUT NOT BE LIMITED TO: EXPERIENCE AND PERSONNEL TO PREPARE CONTAMINATION ASSESSMENT PLANS, CONDUCT CONTAMINATION ASSESSMENTS, PREPARE SITE ASSESSMENT REPORTS, REMEDIATION PLANS, IMPLEMENT REMEDIAL ACTION PLANS, RISK BASED CORRECTIVE ACTIONS, STORAGE TANKS SYSTEM REMOVAL, HIGHWAY SPILL RESPONSE AS WELL AS EXPERIENCE WITH INFRASTRUCTURE/CONSTRUCTION ACTIVITIES WITHIN (POTENTIALLY) CONTAMINATED AREAS SPECIFIC TO TRANSPORTATION SYSTEMS.
- ALL THE WORK PERFORMED BY THE CAR CONTRACTOR SHALL BE PERFORMED IN COMPLIANCE WITH ALL APPLICABLE LOCAL, STATE AND FEDERAL REGULATIONS GOVERNING WORKER SAFETY AND ENVIRONMENTAL REGULATIONS. THIS IS TO INCLUDE OCCUPATIONAL EXPOSURE TO CONTAMINATED SOILS, GROUNDWATER, WASTES AND ATMOSPHERE DURING THE CONSTRUCTION OF ALL FEATURES INCLUDED IN THE CONSTRUCTION PLANS. IN ADDITION, THE CAR CONTRACTOR MUST BE STAFFED WITH FLORIDA LICENSED TECHNICAL PROFESSIONALS (GEOLOGISTS AND ENGINEERS) WHO WILL BE INVOLVED WITH THE PROJECT AND KNOWLEDGEABLE OF THE WORK ACTIVITIES CONDUCTED WITHIN THE IDENTIFIED CONTAMINATED AREAS AND WHO WOULD SIGN AND SEAL PROJECT REPORTS AS REQUIRED FOR SUBMITTAL TO THE APPROPRIATE ENVIRONMENTAL REGULATORY AGENCIES.
- THE LAP CITY OF PORT ST. LUCIE ENGINEER WILL IMMEDIATELY NOTIFY THE FLORIDA DEPARTMENT OF TRANSPORTATION (FDOT) DISTRICT IV CONTAMINATION IMPACT COORDINATOR (DCIC) AT (954) 777-4286 AFTER ENCOUNTERING THE UNIDENTIFIED AREAS OF CONTAMINATION. PRELIMINARY INVESTIGATION BY THE CAR CONTRACTOR WILL DETERMINE THE COURSE OF ACTION NECESSARY FOR SITE SECURITY AND THE STEPS NECESSARY UNDER APPLICABLE LAWS, RULES, AND REGULATIONS FOR ADDITIONAL ASSESSMENT AND/OR REMEDIATION WORK TO RESOLVE THE CONTAMINATION ISSUE.
- FOLLOWING COMPLETION OF THE PROJECT, THE CAR CONTRACTOR SHALL BE REQUIRED TO PROVIDE COPIES OF ALL REPORTS SUBMITTED TO REGULATORY AGENCIES, WASTE MATERIAL PROFILES, MANIFESTS AND/OR DISPOSAL RECEIPTS FOR THE HANDLING OF ALL CONTAMINATED MEDIA INCLUDING BUT NOT LIMITED TO GROUND WATER, WASTE WATER, SOILS, SOLID WASTES, SLUDGE, HAZARDOUS WASTES, AIR MONITORING RECORDS AND SAMPLE RESULTS FOR ALL MATERIALS TESTED AND ANALYZED TO THE LAP CITY OF PORT ST. LUCIE ENGINEER AND THE FDOT DCIC.

REVISIONS

DATE	DESCRIPTION	DATE	DESCRIPTION
4/6/22	FDOT CONSTRUCTABILITY PH COMMENTS		
6/7/22	SLC COMMENTS #1		

MACKENZIE ENGINEERING & PLANNING, INC.
1172 SW 30TH STREET, SUITE 500,
PALM CITY, FLORIDA, 34990
C.A. 29013
SHAUN G. MACKENZIE P.E.
P.E. NO. 61751

CITY OF PORT ST. LUCIE

121 SW PORT ST. LUCIE BLVD
PORT ST. LUCIE BLVD, FL 34984

COUNTY ROAD NO.

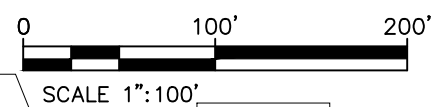
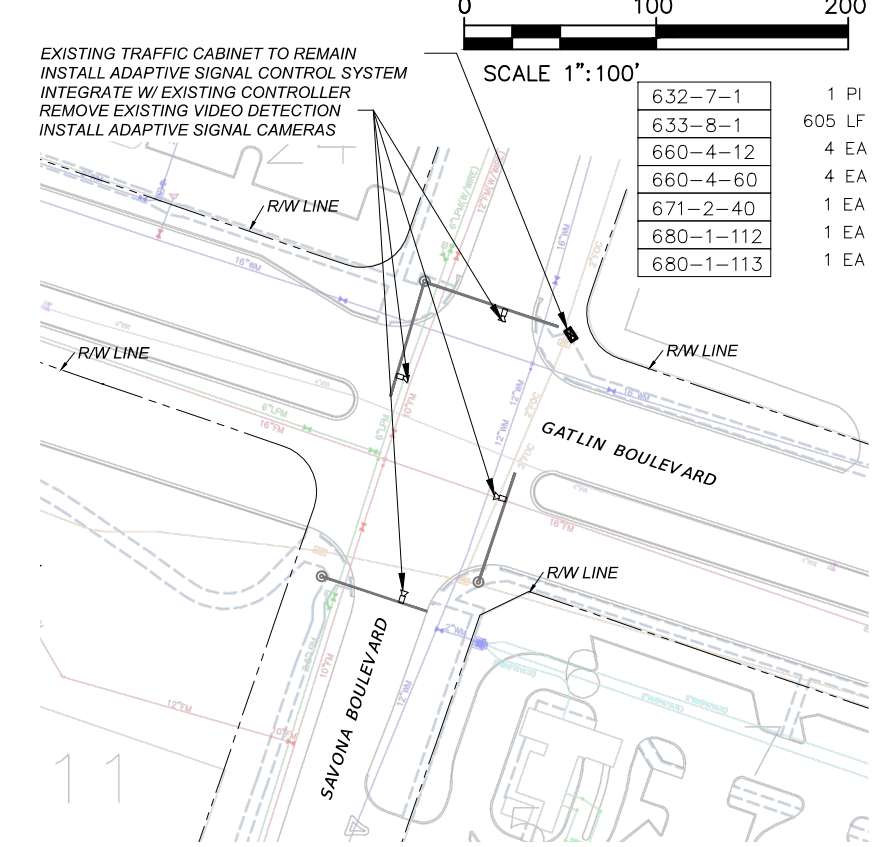
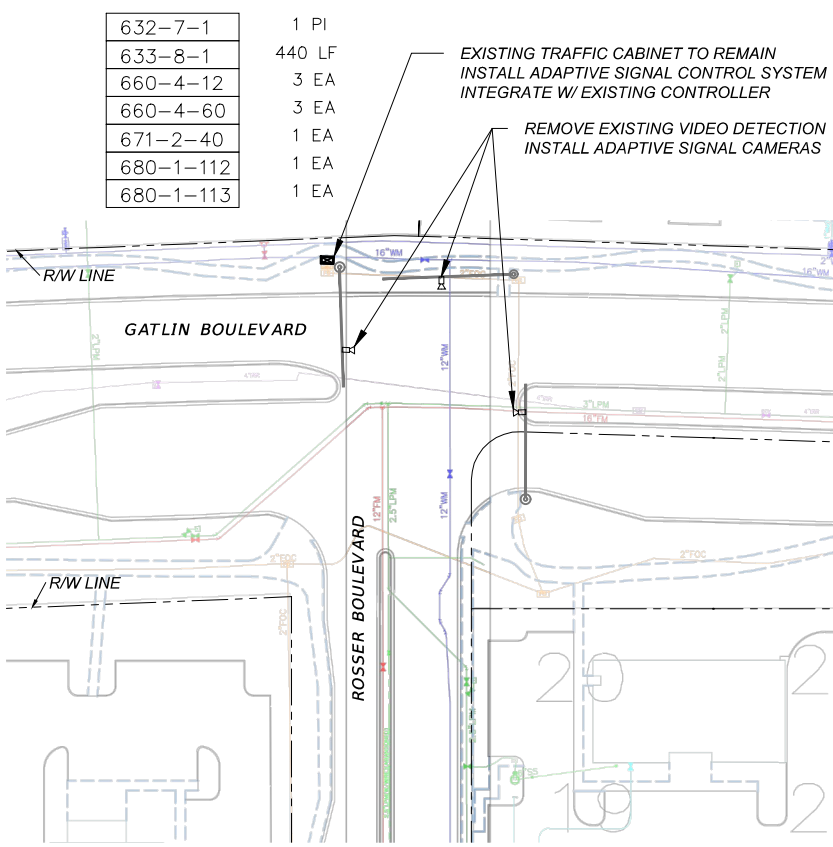
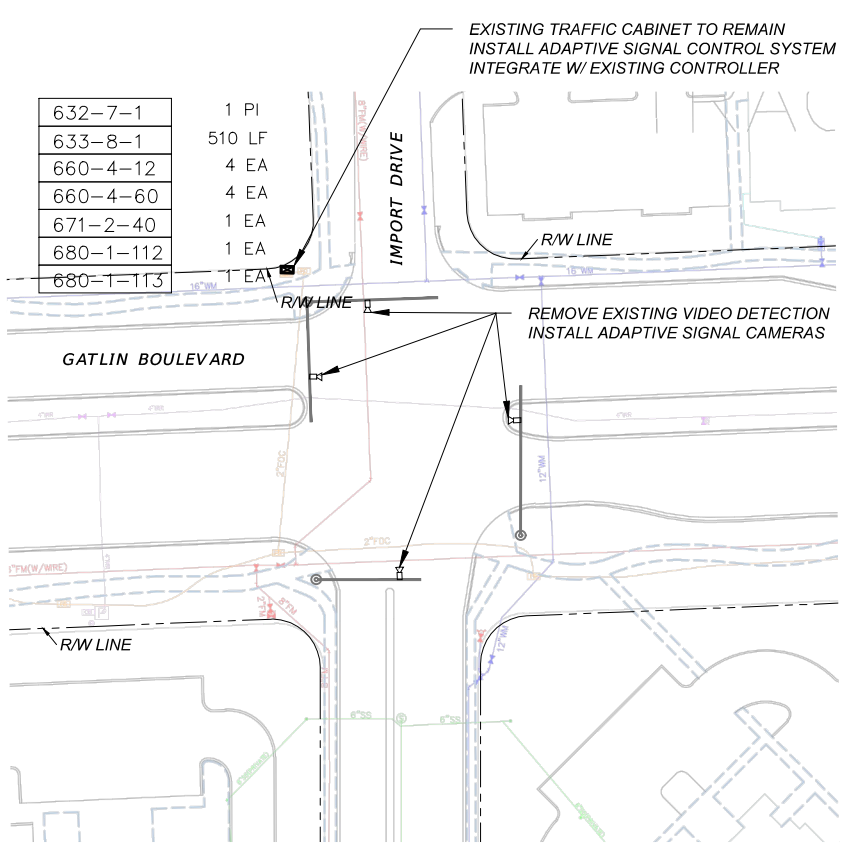
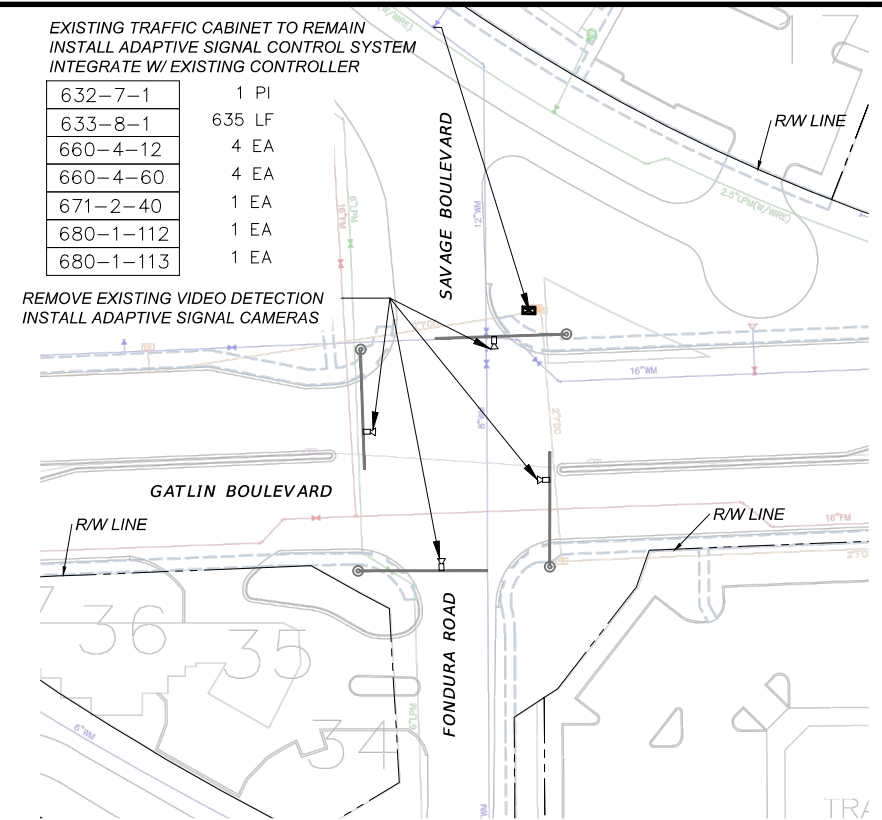
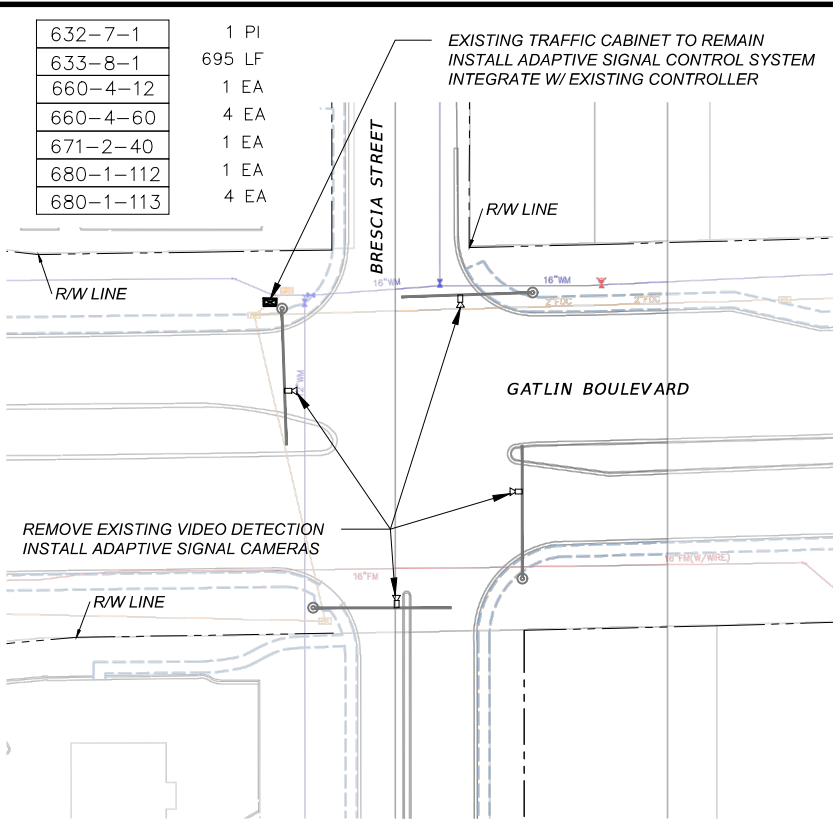
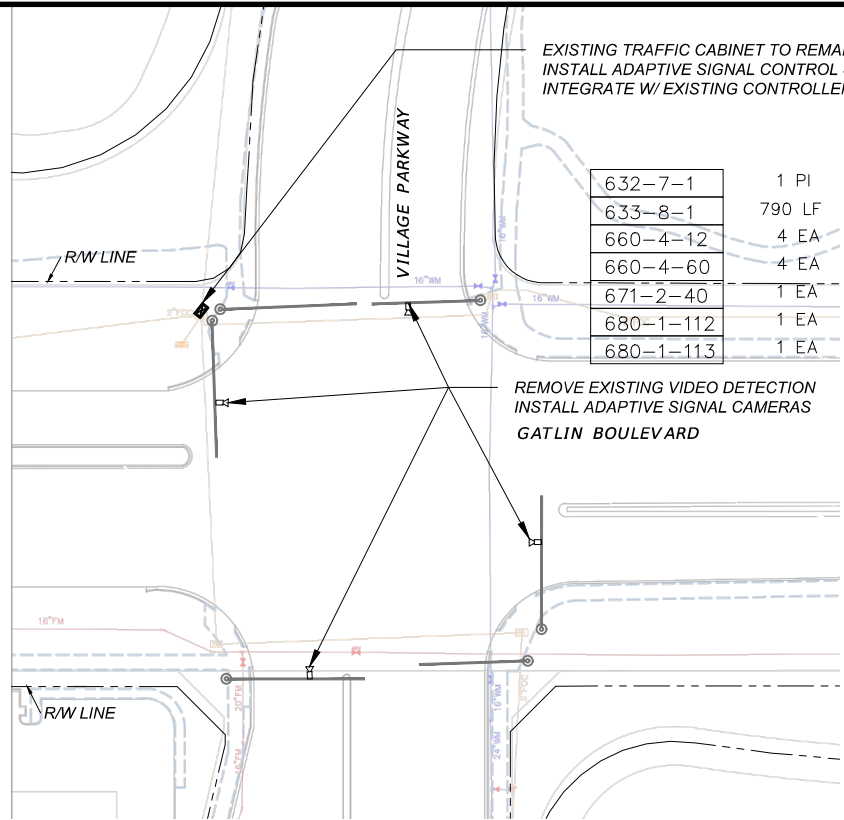
ST. LUCIE COUNTY

GATLIN BOULEVARD

GENERAL NOTES

SHEET NO.

3



NOTE
ALL WORK FOR THIS PROJECT SHALL BE COMPLETED FROM AND WITHIN CITY OF PORT ST. LUCIE RIGHT OF WAY.
DETECTION ZONES WILL BE REPLACED TO MATCH EXISTING

REVISIONS			
DATE	DESCRIPTION	DATE	DESCRIPTION
4/6/22	FDOT CONSTRUCTABILITY PH COMMENTS		
6/7/22	SLC COMMENTS #1		

MACKENZIE ENGINEERING & PLANNING, INC.
1172 SW 30TH STREET, SUITE 500,
PALM CITY, FLORIDA, 34990
C.A. 29013
SHAUN G. MACKENZIE P.E.
P.E. NO. 61751

CITY OF PORT ST. LUCIE
121 SW PORT ST. LUCIE BLVD
PORT ST. LUCIE BLVD, FL 34984

COUNTY	ROAD NO.
ST. LUCIE COUNTY	GATLIN BOULEVARD

ITS PLAN

SHEET NO.
4

THE OFFICIAL RECORD OF THIS SHEET IS THE ELECTRONIC FILE DIGITALLY SIGNED AND SEALED UNDER RULE 61G15-23.004, F.A.C.