

RIVERLAND PARCEL D - PLAT EIGHT

BEING A A PARCEL OF LAND LYING IN SECTIONS 19 AND 20, TOWNSHIP 37 SOUTH,
RANGE 39 EAST, CITY OF PORT ST. LUCIE, ST. LUCIE COUNTY, FLORIDA

SHEET 1 OF 7

LEGAL DESCRIPTION:

BEING A PARCEL OF LAND LYING WITHIN SECTIONS 19 AND 20, TOWNSHIP 37 SOUTH, RANGE 39 EAST, CITY OF PORT ST. LUCIE, ST. LUCIE COUNTY, FLORIDA AND BEING MORE PARTICULARLY DESCRIBED AS FOLLOWS:

BEGIN AT THE NORTHWEST CORNER OF TRACT "053", RIVERLAND PARCEL D - PLAT FIVE, AS RECORDED IN PLAT BOOK 124, PAGE 1, PUBLIC RECORDS OF ST. LUCIE COUNTY, FLORIDA; THENCE ALONG THE NORTHERLY BOUNDARY OF SAID RIVERLAND PARCEL D - PLAT FIVE FOR THE FOLLOWING FOUR (4) DESCRIBED COURSES, SOUTH 81°07'13" WEST, A DISTANCE OF 50.55 FEET; THENCE NORTH 89°56'34" WEST, A DISTANCE OF 1001.68 FEET; THENCE NORTH 85°35'36" WEST, A DISTANCE OF 65.93 FEET; THENCE NORTH 89°55'18" WEST, A DISTANCE OF 237.09 FEET; THENCE ALONG THE EASTERLY LINE OF N/S A RIGHT-OF-WAY, 150 FEET IN WIDTH, AS RECORDED IN OFFICIAL RECORDS BOOK, 3902, PAGE 484, SAID PUBLIC RECORDS, FOR THE FOLLOWING TWO (2) DESCRIBED COURSES; NORTH 00°10'54" EAST, A DISTANCE OF 729.71 FEET TO THE POINT OF CURVATURE OF A CURVE, CONCAVE WESTERLY, HAVING A RADIUS OF 2080.00 FEET, A CENTRAL ANGLE OF 17°49'23"; THENCE NORTHERLY ALONG THE ARC OF SAID CURVE TO THE LEFT, A DISTANCE OF 647.03 FEET TO A POINT ON A CURVE, CONCAVE SOUTHERLY, HAVING A RADIAL BEARING OF SOUTH 15°38'09" EAST, A RADIUS OF 1161.40 FEET AND A CENTRAL ANGLE OF 24°25'17"; THENCE ALONG THE SOUTHERLY LINE OF RIVERLAND PARCEL C - PLAT NINE, AS RECORDED IN PLAT BOOK 89, PAGE 27, SAID PUBLIC RECORDS, FOR THE FOLLOWING TWO (2) DESCRIBED COURSES, AND EASTERLY ALONG THE ARC OF SAID CURVE TO THE RIGHT, A DISTANCE OF 495.03 FEET TO THE POINT OF REVERSE CURVATURE OF A CURVE, CONCAVE NORTHERLY, HAVING A RADIUS OF 7100.00 FEET, A CENTRAL ANGLE OF 08°24'28"; THENCE EASTERLY ALONG THE ARC OF SAID CURVE TO THE LEFT, A DISTANCE OF 1041.89 FEET TO THE POINT OF REVERSE CURVATURE OF A CURVE, CONCAVE SOUTHERLY, HAVING A RADIUS OF 72.00 FEET, AND A CENTRAL ANGLE OF 44°10'46"; THENCE ALONG THE WESTERLY BOUNDARY OF RIVERLAND PARCEL D - PLAT SEVEN, AS RECORDED IN PLAT BOOK 130, PAGE 25, SAID PUBLIC RECORDS, FOR THE FOLLOWING SIX (6) DESCRIBED COURSES, AND EASTERLY ALONG THE ARC OF SAID CURVE TO THE RIGHT, A DISTANCE OF 55.52 FEET TO A POINT OF TANGENCY; THENCE SOUTH 45°26'34" EAST, A DISTANCE OF 18.33 FEET TO THE POINT OF CURVATURE OF A CURVE, CONCAVE SOUTHWESTERLY, HAVING A RADIUS OF 50.00 FEET, A CENTRAL ANGLE OF 45°00'00"; THENCE SOUTHEASTERLY ALONG THE ARC OF SAID CURVE TO THE RIGHT, A DISTANCE OF 39.27 FEET TO A POINT OF TANGENCY; THENCE SOUTH 00°26'34" EAST, A DISTANCE OF 45.84 FEET TO THE POINT OF CURVATURE OF A CURVE, CONCAVE NORTHWESTERLY, HAVING A RADIUS OF 60.00 FEET, A CENTRAL ANGLE OF 67°59'28"; THENCE SOUTHWESTERLY ALONG THE ARC OF SAID CURVE TO THE RIGHT, A DISTANCE OF 71.20 FEET TO A POINT OF NON-TANGENT INTERSECTION WITH A LINE; THENCE SOUTH 00°26'34" EAST, A DISTANCE OF 1139.94 FEET; THENCE SOUTH 89°33'26" WEST ALONG THE NORTHERLY BOUNDARY OF SAID RIVERLAND PARCEL D - PLAT FIVE, A DISTANCE OF 128.20 FEET TO THE POINT OF BEGINNING.

CONTAINING 46.725 ACRES, MORE OR LESS.

CERTIFICATION OF OWNERSHIP & DEDICATION

STATE OF FLORIDA
COUNTY OF BROWARD

RIVERLAND ASSOCIATES IV, LLLP, A FLORIDA LIMITED LIABILITY LIMITED PARTNERSHIP, OWNER OF THE LAND DESCRIBED AND PLATTED HEREIN AS RIVERLAND PARCEL D - PLAT EIGHT, BEING IN ST. LUCIE COUNTY, FLORIDA, HAS CAUSED SAID LANDS TO BE SURVEYED AND PLATTED AS SHOWN HEREON AND HEREBY DEDICATES AS FOLLOWS:

1) THE PRIVATE ROAD RIGHTS OF WAY AS SHOWN HEREON (TRACT A), IS HEREBY DEDICATED TO THE VALENCIA PARC HOMEOWNERS ASSOCIATION, INC., ITS SUCCESSORS AND ASSIGNS FOR INGRESS, EGRESS AND UNDERGROUND UTILITIES PURPOSES AND ARE THE PERPETUAL MAINTENANCE OBLIGATION OF SAID ASSOCIATION, ITS SUCCESSORS AND ASSIGNS. AN EASEMENT OVER AND UNDER SAID PRIVATE ROAD RIGHTS OF WAY, AS SHOWN HEREON, IS ALSO RESERVED IN FAVOR OF THE CITY OF PORT ST. LUCIE, ITS SUCCESSORS AND ASSIGNS FOR CITY OF PORT ST. LUCIE SERVICE AND EMERGENCY VEHICLES AND FOR ACCESS TO, AND INSTALLATION AND MAINTENANCE OF, PUBLIC UTILITY FACILITIES, INCLUDING, BUT NOT LIMITED TO, WATER AND WASTEWATER LINES AND APPURTENANT FACILITIES. THE CITY OF PORT ST. LUCIE SHALL NOT BE RESPONSIBLE FOR ANY MAINTENANCE OBLIGATIONS FOR SAID PRIVATE ROAD RIGHTS OF WAY EXCEPT AS SHALL RELATE TO THE SERVICING OF SUCH PUBLIC UTILITIES BY THE CITY OF PORT ST. LUCIE.

2) THE DRAINAGE EASEMENTS (D.E.) AS SHOWN HEREON ARE HEREBY DEDICATED TO THE VALENCIA PARC HOMEOWNERS ASSOCIATION, INC., ITS SUCCESSORS AND ASSIGNS, FOR DRAINAGE PURPOSES AND THEY ARE THE MAINTENANCE OBLIGATION OF SAID ASSOCIATION, ITS SUCCESSORS AND ASSIGNS. SAID DRAINAGE EASEMENTS MAY ALSO BE USED BY THE CITY OF PORT ST. LUCIE, ITS SUCCESSORS AND ASSIGNS, FOR DRAINAGE, MAINTENANCE ACTIVITIES AND STORMWATER MANAGEMENT PURPOSES FOR DRAINAGE FROM SW MARSHALL PARKWAY (E/W #3), N/S A AND RIVERLAND BOULEVARD, IN ACCORDANCE WITH THE DRAINAGE OR SURFACE WATER MANAGEMENT PERMITS ISSUED FROM TIME TO TIME FOR THE LANDS SUBJECT TO THIS PLAT.

3) THE WATER MANAGEMENT TRACTS L15C AND L22, AS SHOWN HEREON ARE DEDICATED TO THE VALENCIA PARC HOMEOWNERS ASSOCIATION, INC., ITS SUCCESSORS AND ASSIGNS, FOR THE PURPOSE OF SURFACE WATER MANAGEMENT AND THEY ARE THE MAINTENANCE OBLIGATION OF SAID ASSOCIATION, ITS SUCCESSORS AND ASSIGNS. SAID WATER MANAGEMENT TRACT MAY ALSO BE USED BY THE CITY OF PORT ST. LUCIE, ITS SUCCESSORS AND ASSIGNS, FOR DRAINAGE, MAINTENANCE ACTIVITIES AND STORMWATER MANAGEMENT PURPOSES FOR DRAINAGE FROM SW MARSHALL PARKWAY (E/W #3), N/S A AND RIVERLAND BOULEVARD, IN ACCORDANCE WITH THE DRAINAGE OR SURFACE WATER MANAGEMENT PERMITS ISSUED FROM TIME TO TIME FOR THE LANDS SUBJECT TO THIS PLAT.

4) THE LAKE MAINTENANCE EASEMENTS (L.M.E.) AND LAKE MAINTENANCE ACCESS EASEMENTS (L.M.A.E.), AS SHOWN HEREON, ARE HEREBY DEDICATED TO THE VALENCIA PARC HOMEOWNERS ASSOCIATION, INC., ITS SUCCESSORS AND ASSIGNS, AND ARE THE PERPETUAL MAINTENANCE OBLIGATIONS OF SAID ASSOCIATION, ITS SUCCESSORS AND ASSIGNS.

5) THE OPEN SPACE TRACTS OS1 THROUGH OS5, AS SHOWN HEREON, ARE HEREBY DEDICATED TO THE VALENCIA PARC HOMEOWNERS ASSOCIATION, INC., ITS SUCCESSORS AND ASSIGNS, FOR OPEN SPACE, UTILITY, DRAINAGE FACILITIES, PEDESTRIAN ACCESS, AND GOLF CART AND SIMILAR SIZED NEIGHBORHOOD ELECTRIC VEHICLE PURPOSES AND ARE THE PERPETUAL MAINTENANCE OBLIGATION OF SAID ASSOCIATION, ITS SUCCESSORS AND ASSIGNS.

CERTIFICATION OF OWNERSHIP & DEDICATION (CONTINUED)

6) THE CITY OF PORT ST. LUCIE UTILITY EASEMENTS (P.S.L.U.E.) AS SHOWN HEREON ARE HEREBY DEDICATED TO THE CITY OF PORT ST. LUCIE ("CITY"), ITS SUCCESSORS, AGENTS, EMPLOYEES, CONTRACTORS, DESIGNEES AND ASSIGNS, A GENERAL INGRESS/EGRESS EASEMENT OVER AND ACROSS ITS DRIVEWAYS, PARKING, COMMON OR OPEN AREAS FOR ACCESS TO, OPERATION, MODIFICATIONS, INSTALLATION OF OR MAINTENANCE OF, PUBLIC UTILITIES FACILITIES, INCLUDING BUT NOT LIMITED TO, WATER AND WASTEWATER LINES, APPURTENANT FACILITIES, AND EQUIPMENT, THERE SHALL BE NO OTHER PUBLIC OR PRIVATE UTILITY FACILITIES INSTALLED IN, ON, OVER, UNDER, OR ACROSS THE EASEMENT AREA WITHOUT THE CITY'S WRITTEN PERMISSION. THERE SHALL BE NO IMPROVEMENTS OF ANY KIND INCLUDING, BUT NOT LIMITED TO, LANDSCAPING CONSTRUCTED WITHIN THE BOUNDARIES OF THE EASEMENT AREA WHICH WOULD RESTRICT THE OPERATION AND MAINTENANCE OF, OR WHICH MAY IN ANY MANNER RESULT IN HARM TO THE CITY'S FACILITIES. THE VALENCIA PARC HOMEOWNERS ASSOCIATION, INC., ITS SUCCESSORS OR ASSIGNS, SHALL MAINTAIN, REPAIR AND REPLACE ANY PERMITTED IMPROVEMENTS OVER THE UTILITY EASEMENT, WHICH ARE NOT PRECLUDED BY THE FOREGOING, WHICH MAY BE DAMAGED OR DESTROYED BY THE CITY, ITS SUCCESSORS OR ASSIGNS, DESIGNEES OR CONTRACTORS IN THE CONSTRUCTION, OPERATION, MAINTENANCE OF, OR ACCESS TO, THE CITY'S FACILITIES. THE CITY, ITS SUCCESSORS OR ASSIGNS, SHALL HAVE THE RIGHT TO REQUIRE THE REMOVAL OF ANY IMPROVEMENTS, WHICH ARE CONSTRUCTED IN VIOLATION OF THE CONDITIONS SET FORTH ABOVE. IF VIOLATING IMPROVEMENTS ARE NOT REMOVED UPON REQUEST, THE CITY, ITS SUCCESSORS OR ASSIGNS, DESIGNEES OR CONTRACTORS WILL REMOVE SAID IMPROVEMENTS WITHOUT LIABILITY, RESPONSIBILITY OR COST TO THE CITY OF PORT ST. LUCIE. THE CITY OF PORT ST. LUCIE SHALL NOT BE RESPONSIBLE FOR ANY MAINTENANCE OBLIGATIONS FOR SAID EASEMENTS EXCEPT AS SHALL RELATE TO THE SERVICING OF SUCH PUBLIC UTILITIES BY THE CITY OF PORT ST. LUCIE.

7) THE UTILITY EASEMENTS (U.E.) AS SHOWN HEREON RUNNING ADJACENT AND PARALLEL TO THE TRACTS FOR PRIVATE ROAD PURPOSES ARE NON-EXCLUSIVE EASEMENTS AND ARE HEREBY DEDICATED FOR THE INSTALLATION, OPERATION, MAINTENANCE, REPAIR, EXPANSION AND REPLACEMENT OF UTILITIES, BOTH PUBLIC AND PRIVATE, INCLUDING, BUT NOT LIMITED TO, WATER AND WASTEWATER LINES, ELECTRICAL LINES, GAS LINES, AND TELECOMMUNICATION LINES, AND ALL RELATED FACILITIES AND APPURTENANCES. PURSUANT TO SECTION 177.091(28), FLORIDA STATUTES, THE UTILITY EASEMENTS SHALL ALSO BE USED FOR THE CONSTRUCTION, INSTALLATION, MAINTENANCE AND OPERATION OF CABLE TELEVISION SERVICES; PROVIDED, HOWEVER, NO SUCH CONSTRUCTION, INSTALLATION, MAINTENANCE, AND OPERATION OF CABLE TELEVISION SERVICES SHALL INTERFERE WITH THE FACILITIES AND SERVICES OF AN ELECTRIC, TELEPHONE, GAS, OR OTHER PUBLIC UTILITY. IN THE EVENT A CABLE TELEVISION COMPANY DAMAGES THE FACILITIES OF A PUBLIC UTILITY, IT SHALL BE SOLELY RESPONSIBLE FOR THE DAMAGES. THE FOREGOING SHALL NOT APPLY TO THOSE PRIVATE EASEMENTS GRANTED TO OR OBTAINED BY A PARTICULAR ELECTRIC, TELEPHONE, GAS, OR OTHER PUBLIC UTILITY. SUCH CONSTRUCTION, INSTALLATION, MAINTENANCE, AND OPERATION SHALL COMPLY WITH THE NATIONAL ELECTRICAL SAFETY CODE AS ADOPTED BY THE FLORIDA PUBLIC SERVICE COMMISSION, IN THE EVENT THAT A LAW, STANDARD, CODE, OR CITY CODE REQUIREMENT, RELATING TO THE INSTALLATION AND MAINTENANCE OF PUBLIC UTILITIES OR PUBLIC DRAINAGE FACILITIES, AS REFERENCED IN THIS PROVISION, CONFLICTS, THE MORE STRINGENT REQUIREMENT REGULATION PREVAILS.

NOTWITHSTANDING THE ABOVE, LOCATED WITHIN ALL UTILITY EASEMENTS RUNNING ADJACENT AND PARALLEL TO FIFTY FOOT (50') WIDE TRACTS FOR PRIVATE ROAD PURPOSES, THERE IS HEREBY DESIGNATED WITHIN SUCH UTILITY EASEMENTS, A TWO FOOT (2') WIDE RESTRICTED AREA (U.E.-RA) LOCATED ADJACENT AND PARALLEL TO SUCH FIFTY FOOT (50') WIDE TRACTS. NO UTILITIES AND/OR RELATED FACILITIES AND APPURTENANCES PERMITTED TO BE INSTALLED IN THE UTILITY EASEMENTS AS PROVIDED HEREIN SHALL BE INSTALLED IN ANY PORTION OF SUCH RESTRICTED AREA WITHOUT THE PRIOR WRITTEN APPROVAL OF THE CITY OF PORT ST. LUCIE, ITS SUCCESSORS AND/OR ASSIGNS, EXCEPT ONLY TO CROSS SUCH RESTRICTED AREA.

THERE SHALL BE NO IMPROVEMENTS OF ANY KIND INCLUDING, BUT NOT LIMITED TO, TREES PLANTED WITHIN THE BOUNDARIES OF THE UTILITY EASEMENTS WHICH WOULD RESTRICT THE OPERATION AND MAINTENANCE OF, OR WHICH MAY IN ANY MANNER RESULT IN HARM TO, THE CITY OF PORT ST. LUCIE'S FACILITIES. THE VALENCIA PARC HOMEOWNERS ASSOCIATION, INC., THEIR SUCCESSORS AND ASSIGNS, SHALL MAINTAIN, REPAIR AND REPLACE ANY PERMITTED IMPROVEMENTS OVER THE UTILITY EASEMENTS, WHICH ARE NOT PRECLUDED BY THE FOREGOING, WHICH MAY BE DAMAGED OR DESTROYED BY THE CITY OF PORT ST. LUCIE, ITS SUCCESSORS AND/OR ASSIGNS, DESIGNEES OR CONTRACTORS IN THE OPERATION, MAINTENANCE OF, OR ACCESS TO THE CITY'S FACILITIES. THE CITY OF PORT ST. LUCIE, ITS SUCCESSORS AND/OR ASSIGNS, SHALL HAVE THE RIGHT TO REQUIRE THE REMOVAL OF ANY IMPROVEMENTS WHICH ARE CONSTRUCTED IN VIOLATION OF THE CONDITIONS SET FORTH ABOVE. IN THE EVENT SUCH VIOLATING IMPROVEMENTS ARE NOT REMOVED ON REQUEST, THEY SHALL BE SUBJECT TO REMOVAL BY THE CITY OF PORT ST. LUCIE, ITS SUCCESSORS AND/OR ASSIGNS, DESIGNEES OR CONTRACTORS WITHOUT LIABILITY, RESPONSIBILITY OR COST TO THE CITY. THE CITY OF PORT ST. LUCIE SHALL NOT BE RESPONSIBLE FOR ANY MAINTENANCE OBLIGATIONS FOR SAID EASEMENTS EXCEPT AS SHALL RELATE TO THE SERVICING OF SUCH PUBLIC UTILITIES BY THE CITY OF PORT ST. LUCIE.

8) THE LANDSCAPE EASEMENTS (L.E.), AS SHOWN HEREON, ARE HEREBY DEDICATED TO THE VALENCIA PARC HOMEOWNERS ASSOCIATION, INC., ITS SUCCESSORS AND ASSIGNS, FOR LANDSCAPE, IRRIGATION AND DRAINAGE PURPOSES AND THEY ARE THE MAINTENANCE OBLIGATION OF SAID ASSOCIATION, ITS SUCCESSORS AND ASSIGNS.

9) THE DRAINAGE SWALE EASEMENTS (D.S.E.), AS SHOWN HEREON, ARE HEREBY DEDICATED TO THE VALENCIA PARC HOMEOWNERS ASSOCIATION, INC., ITS SUCCESSORS AND ASSIGNS, FOR DRAINAGE PURPOSES AND THEY ARE THE MAINTENANCE OBLIGATION OF SAID ASSOCIATION, ITS SUCCESSORS AND ASSIGNS.

IN WITNESS WHEREOF, THE ABOVE NAMED LIMITED LIABILITY LIMITED PARTNERSHIP HAS CAUSED THESE PRESENTS TO BE SIGNED BY ITS GENERAL PARTNER, RIVERLAND IV CORPORATION, A FLORIDA CORPORATION AND ITS CORPORATE SEAL TO BE AFFIXED HERETO, THIS ____ DAY OF _____, 2025.

RIVERLAND ASSOCIATES IV, LLLP, A FLORIDA LIMITED LIABILITY LIMITED PARTNERSHIP
BY: RIVERLAND IV CORPORATION, A FLORIDA CORPORATION, ITS GENERAL PARTNER

BY: _____ DATE: _____
RICHARD M. NORWALK, VICE PRESIDENT

WITNESS: _____ WITNESS: _____

PRINT NAME: _____ PRINT NAME: _____

ACKNOWLEDGMENT

STATE OF FLORIDA
COUNTY OF BROWARD

BEFORE ME, BY MEANS OF () PHYSICAL PRESENCE OR () ONLINE NOTARIZATION, RICHARD M. NORWALK, WHO IS PERSONALLY KNOWN TO ME OR HAS PRODUCED _____ AS IDENTIFICATION, AND WHO EXECUTED THE FOREGOING INSTRUMENT AS VICE PRESIDENT OF RIVERLAND IV CORPORATION, AND SEVERALLY ACKNOWLEDGED TO AND BEFORE ME THAT HE EXECUTED SUCH INSTRUMENT ON BEHALF OF SAID CORPORATION, AND THAT THE SEAL AFFIXED TO THE FOREGOING INSTRUMENT IS THE CORPORATE SEAL OF SAID CORPORATION AND THAT IT WAS AFFIXED TO SAID INSTRUMENT BY DUE AND REGULAR CORPORATE AUTHORITY, AND THAT SAID INSTRUMENT IS THE FREE ACT AND DEED OF SAID CORPORATION. WITNESS MY HAND AND OFFICIAL SEAL THIS _____ DAY OF _____, 2025.

COMMISSION
NUMBER: _____

NOTARY PUBLIC: _____

PRINT NAME: _____

MY COMMISSION EXPIRES: _____

ACCEPTANCE OF DEDICATION

STATE OF FLORIDA
COUNTY OF BROWARD

VALENCIA PARC HOMEOWNERS ASSOCIATION, INC., HEREBY:

1) ACCEPTS THE DEDICATIONS AND/OR THEIR OBLIGATIONS AS STATED HEREON, OF TRACT A, TRACTS L15C AND L22, LAKE MAINTENANCE EASEMENTS, LAKE MAINTENANCE ACCESS EASEMENTS, DRAINAGE EASEMENTS, DRAINAGE SWALE EASEMENTS, LANDSCAPE EASEMENTS, UTILITY EASEMENTS, PORT ST. LUCIE UTILITY EASEMENTS, AND OPEN SPACE TRACTS OS1 THROUGH OS5, AS SET FORTH UPON THIS PLAT AND SPECIFICALLY DEDICATED TO VALENCIA PARC HOMEOWNERS ASSOCIATION, INC.

2) CONSENTS TO THE PLATTING OF THE LANDS HEREIN.

DATED THIS _____ DAY OF _____, 2025.

CHARLES SAENZ, PRESIDENT

WITNESS: _____ WITNESS: _____

PRINT NAME: _____ PRINT NAME: _____

ACKNOWLEDGMENT

STATE OF FLORIDA
COUNTY OF BROWARD

BEFORE ME, BY MEANS OF () PHYSICAL PRESENCE OR () ONLINE NOTARIZATION, CHARLES SAENZ, WHO IS PERSONALLY KNOWN TO ME OR HAS PRODUCED _____ AS IDENTIFICATION, AND WHO EXECUTED THE FOREGOING INSTRUMENT AS PRESIDENT OF VALENCIA PARC HOMEOWNERS ASSOCIATION, INC., AND SEVERALLY ACKNOWLEDGED TO AND BEFORE ME THAT HE EXECUTED SUCH INSTRUMENT AS SUCH OFFICER OF SAID CORPORATION, AND THAT THE SEAL AFFIXED TO THE FOREGOING INSTRUMENT IS THE CORPORATE SEAL OF SAID CORPORATION AND THAT IT WAS AFFIXED TO SAID INSTRUMENT BY DUE AND REGULAR CORPORATE AUTHORITY, AND THAT SAID INSTRUMENT IS THE FREE ACT AND DEED OF SAID CORPORATION. WITNESS MY HAND AND OFFICIAL SEAL THIS _____ DAY OF _____, 2025.

NOTARY PUBLIC: _____

PRINT NAME: _____

MY COMMISSION EXPIRES: _____

COMMISSION
NUMBER: _____

APPROVAL OF CITY COUNCIL

STATE OF FLORIDA
COUNTY OF ST. LUCIE

IT IS HEREBY CERTIFIED THAT THIS PLAT OF RIVERLAND PARCEL D - PLAT EIGHT, HAS BEEN OFFICIALLY APPROVED FOR RECORD BY THE CITY COUNCIL OF THE CITY OF PORT ST. LUCIE AND ALL DEDICATIONS TO THE CITY OF PORT ST. LUCIE HEREIN ARE ACCEPTED, THIS _____ DAY OF _____, 2025.

CITY OF PORT ST. LUCIE

ATTEST:

SHANNON M. MARTIN, MAYOR

SALLY WALSH, CITY CLERK

CLERK'S RECORDING CERTIFICATE

STATE OF FLORIDA
COUNTY OF ST. LUCIE

I MICHELLE R. MILLER, CLERK OF THE CIRCUIT COURT OF ST. LUCIE, FLORIDA, DO HEREBY CERTIFY THAT THIS PLAT HAS BEEN EXAMINED, AND THAT IT COMPLIES IN FORM WITH ALL THE REQUIREMENTS OF THE LAWS OF FLORIDA PERTAINING TO MAPS AND PLATS, AND THAT THIS PLAT HAS BEEN FILED FOR RECORD IN PLAT BOOK _____ PAGES _____ OF THE PUBLIC RECORDS OF ST. LUCIE COUNTY, FLORIDA, THIS _____ DAY OF _____, 2025.

MICHELLE R. MILLER, CLERK OF THE CIRCUIT COURT
ST. LUCIE COUNTY, FLORIDA

TITLE CERTIFICATION

I, _____, A DULY LICENSED ATTORNEY IN THE STATE OF FLORIDA, DO HEREBY CERTIFY THAT, AS OF THE _____ DAY OF _____, 2025,:

THE RECORD TITLE TO THE LAND AS DESCRIBED AND SHOWN HEREON IS IN THE NAME OF RIVERLAND ASSOCIATES IV, LLLP, A FLORIDA LIMITED LIABILITY LIMITED PARTNERSHIP, THE ENTITY EXECUTING THE DEDICATION.

THERE ARE NO MORTGAGES OF RECORD, ENCUMBERING THE LAND DESCRIBED HEREON. PURSUANT TO FLORIDA STATUTE 197.192, ALL TAXES HAVE BEEN PAID THROUGH THE YEAR 2024.

ALL ASSESSMENTS AND OTHER ITEMS HELD AGAINST SAID LAND HAVE BEEN SATISFIED. THERE ARE ENCUMBRANCES OF RECORD BUT THOSE ENCUMBRANCES DO NOT PROHIBIT THE CREATION OF THE SUBDIVISION DEPICTED BY THIS PLAT.

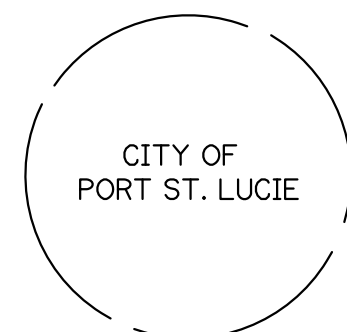
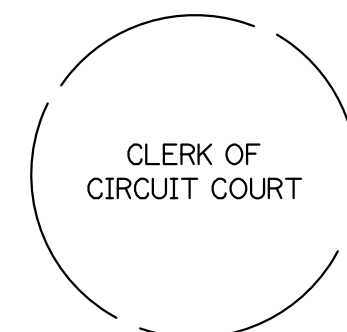
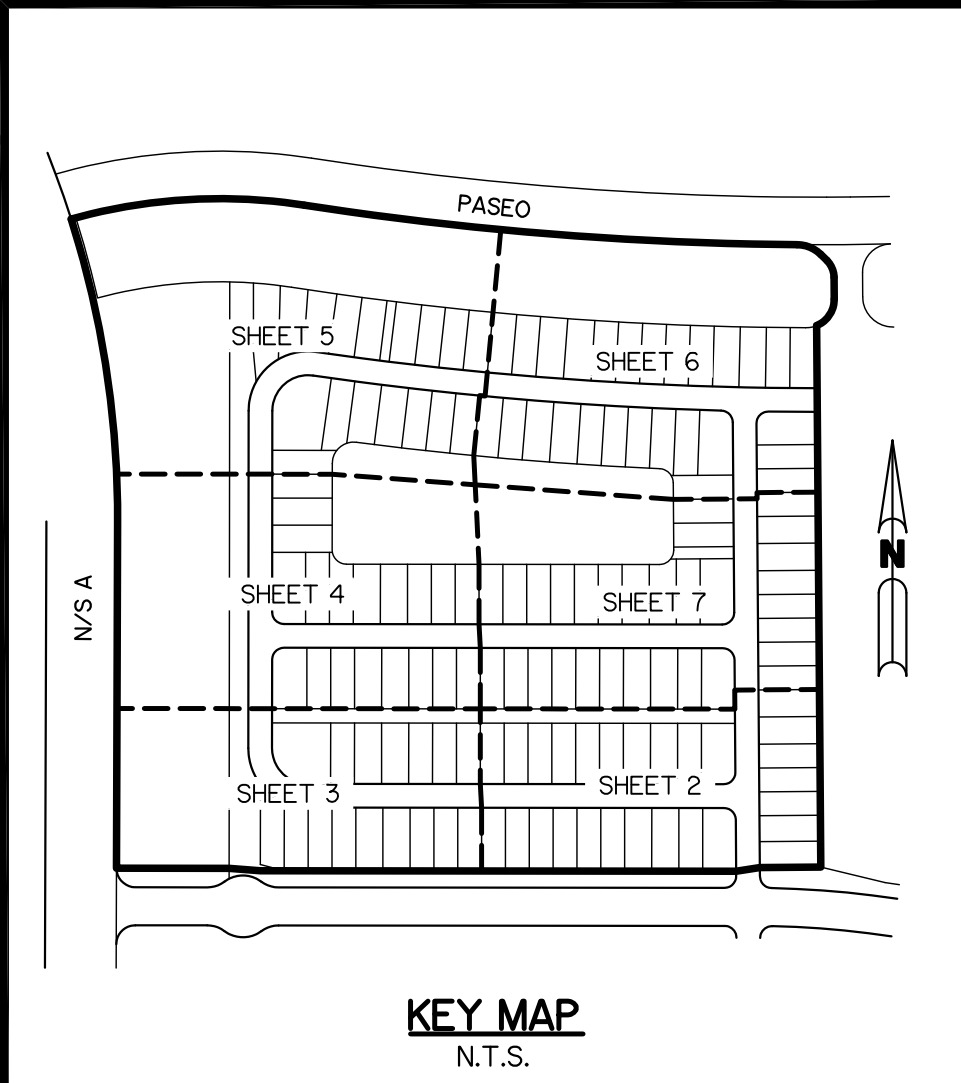
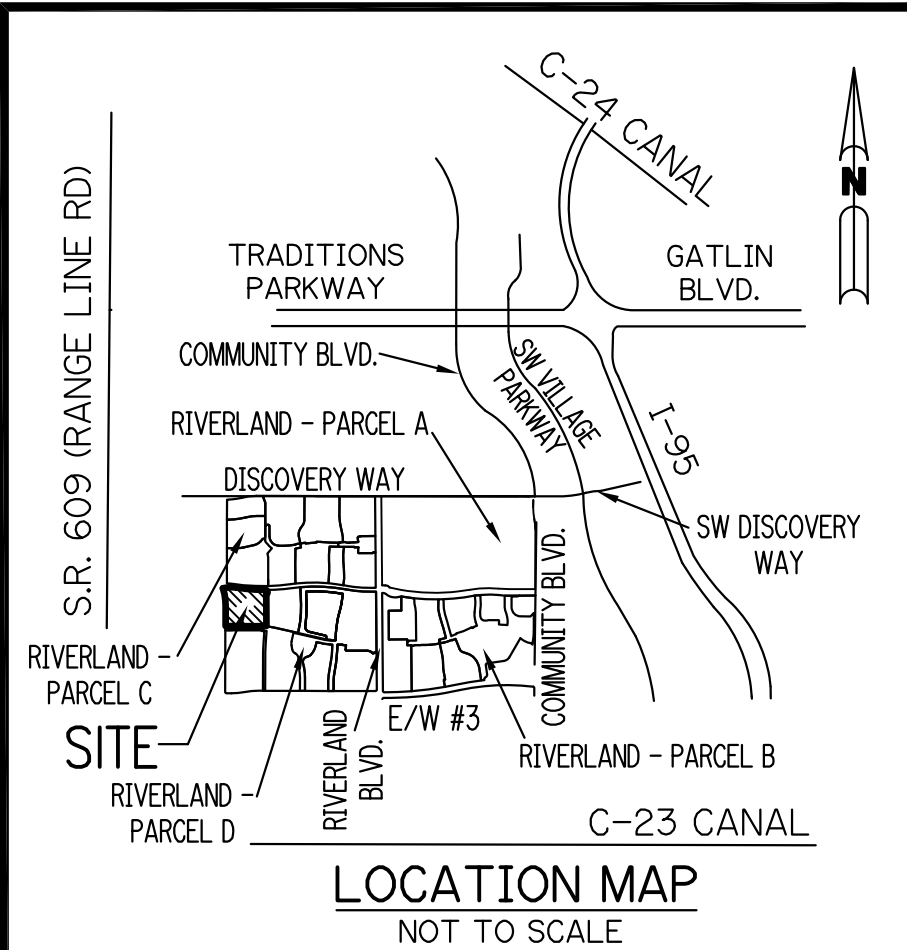
DATED THIS _____ DAY OF _____, 2025.

BY: _____

PRINT NAME: _____
ATTORNEY AT LAW
FLORIDA BAR # _____
FOR THE FIRM OF GREENBERG TRAURIG, P.A.

THIS INSTRUMENT PREPARED BY
PERRY C. WHITE, P.S.M. 4213,
STATE OF FLORIDA
SAND & HILLS SURVEYING, INC.
8461 LAKE WORTH ROAD, SUITE 410
LAKE WORTH, FLORIDA 33467 LB-7741

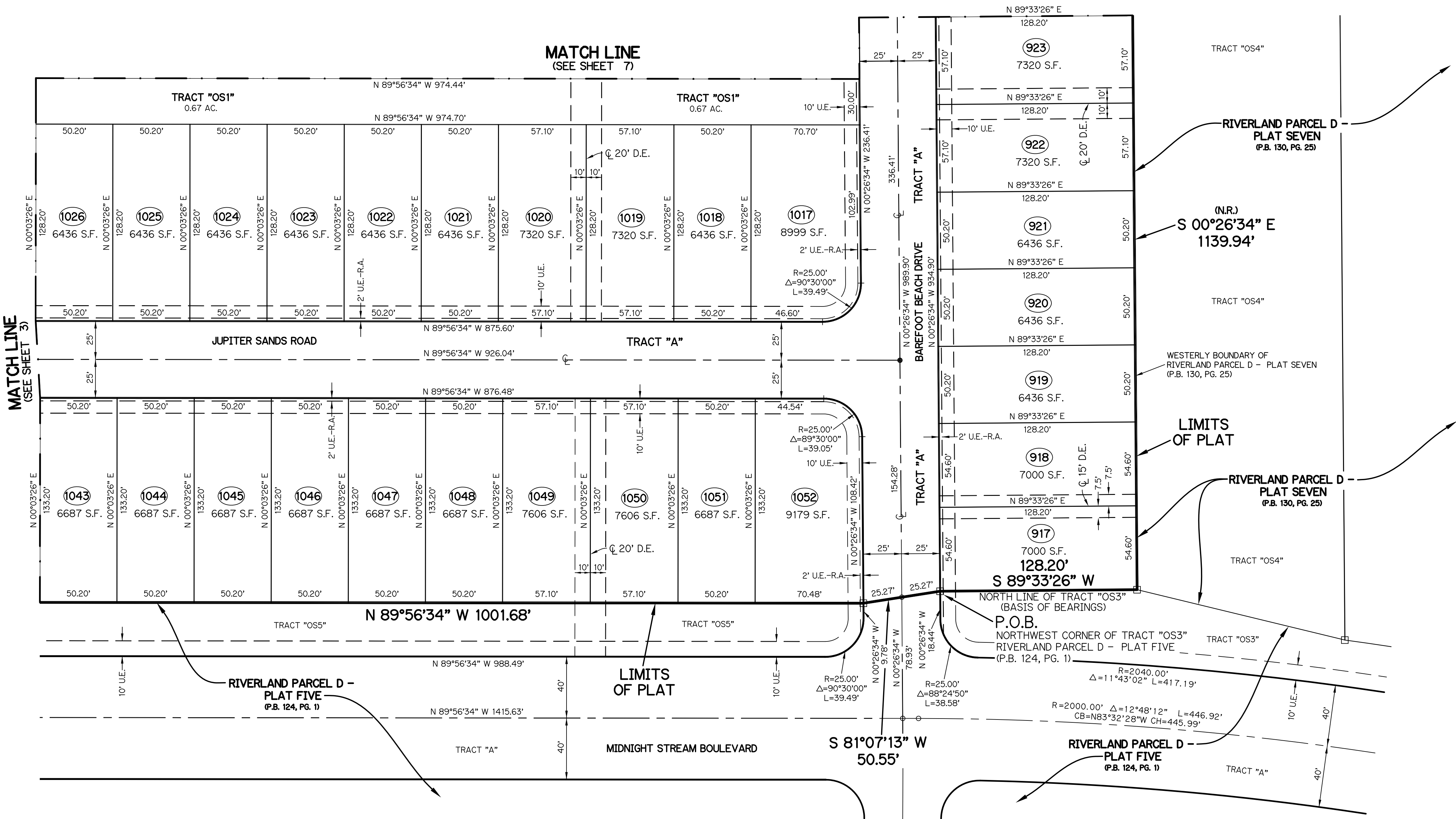
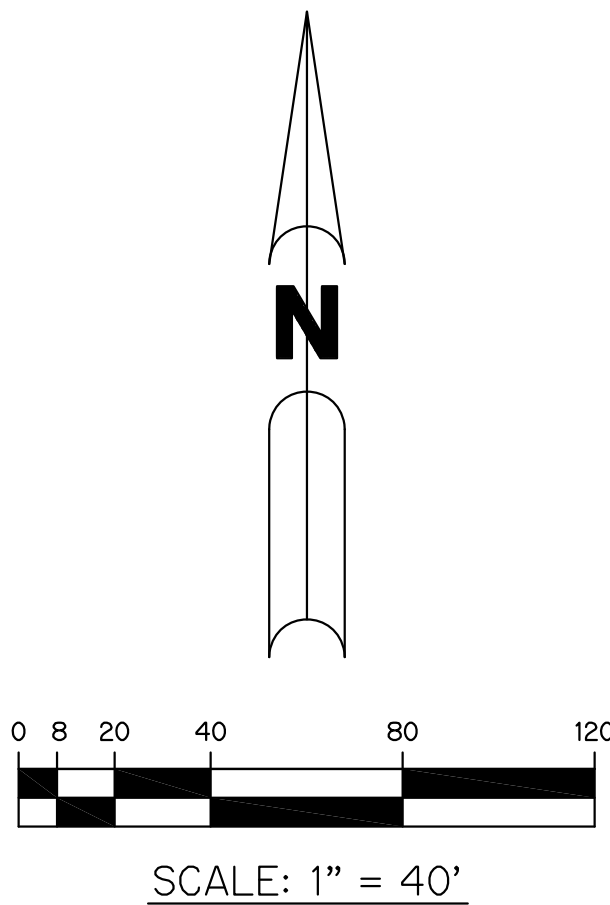
PLANNING & ZONING PROJECT NUMBER: P 24-075



RIVERLAND PARCEL D - PLAT EIGHT

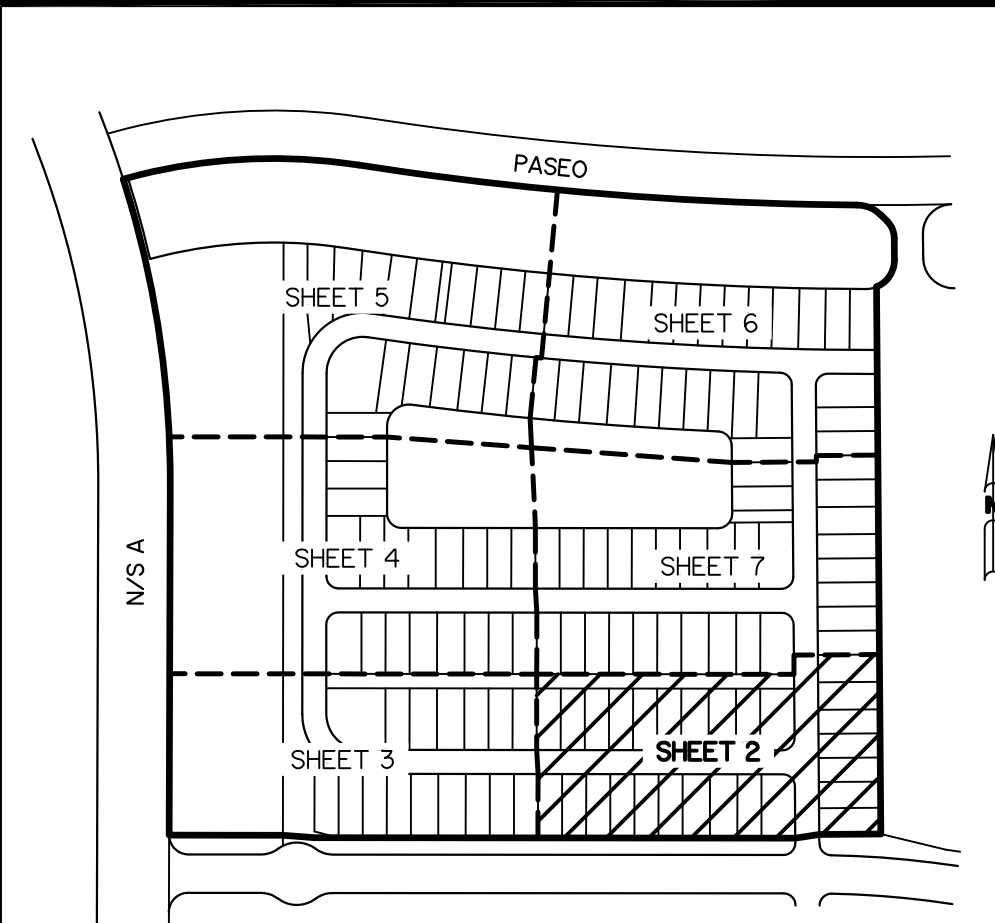
A PARCEL OF LAND LYING IN SECTIONS 19 AND 20, TOWNSHIP 37 SOUTH,
RANGE 39 EAST, CITY OF PORT ST. LUCIE, ST. LUCIE COUNTY, FLORIDA

SHEET 2 OF 7



- LEGEND:**
- - SET PERMANENT REFERENCE MONUMENT
5/8" IRON ROD 18" IN LENGTH WITH 1.5" CAP
STAMPED PRM L.B. #7741
 - - FOUND PERMANENT REFERENCE MONUMENT
5/8" IRON ROD 18" IN LENGTH WITH 1.5" CAP
STAMPED PRM L.B. #7741
 - - SET PERMANENT CONTROL POINT
NAIL WITH 1.25" DISK STAMPED PCP L.B. #7741
 - - FOUND PERMANENT CONTROL POINT
NAIL WITH 1.25" DISK STAMPED PCP L.B. #7741
 - Δ - DELTA ANGLE
 - AC. - ACRES
 - B.E. - BUFFER EASEMENT
 - CB - CHORD BEARING
 - CH - CHORD DISTANCE
 - CL - CENTERLINE
 - D.B. - DEED BOOK
 - D.E. - DRAINAGE EASEMENT
 - D.S.E. - DRAINAGE SWALE EASEMENT
 - L. - ARC LENGTH
 - L.A.E. - LIMITED ACCESS EASEMENT
 - L.E. - LANDSCAPE EASEMENT
 - L.M.A.E. - LAKE MAINTENANCE ACCESS EASEMENT
 - L.M.E. - LAKE MAINTENANCE EASEMENT
 - N.R. - NOT RADIAL
 - N.R.T.R. - NOT RADIAL TO REAR
 - N.T.S. - NOT TO SCALE
 - O.R.B. - OFFICIAL RECORD BOOK
 - O.E. - MAINTENANCE & ROOF OVERHANG EASEMENT
 - P.B. - PLAT BOOK
 - P.C.P. - PERMANENT CONTROL POINT
 - P.G.S. - PAGES
 - P.O.B. - POINT OF BEGINNING
 - P.O.C. - POINT OF COMMENCEMENT
 - P.S.L.U.E. - PORT ST. LUCIE UTILITY EASEMENT
 - P.S.M. - PROFESSIONAL SURVEYOR AND MAPPER
 - R. - RADIUS
 - R/W. - RIGHT-OF-WAY
 - S.F. - SQUARE FEET
 - S.T. - SURVEY TIE
 - U.E. - UTILITY EASEMENT
 - RAD. - RADIAL LINE
 - U.E.-R.A. - UTILITY EASEMENT-RESTRICTED AREA
 - P.C. - POINT OF CURVATURE
 - P.T. - POINT OF TANGENCY
 - P.R.C. - POINT OF REVERSE CURVATURE
 - P.N.R.I. - POINT OF NON-RADIAL INTERSECTION
 - P.R.I. - POINT OF RADIAL INTERSECTION
 - P.C.C. - POINT OF COMPOUND CURVATURE

THIS INSTRUMENT WAS PREPARED BY
PERRY C. WHITE, P.S.M. 4213, STATE OF FLORIDA
SAND & HILLS SURVEYING, INC.
8461 LAKE WORTH ROAD, SUITE 410
LAKE WORTH, FLORIDA 33467
LB-7741

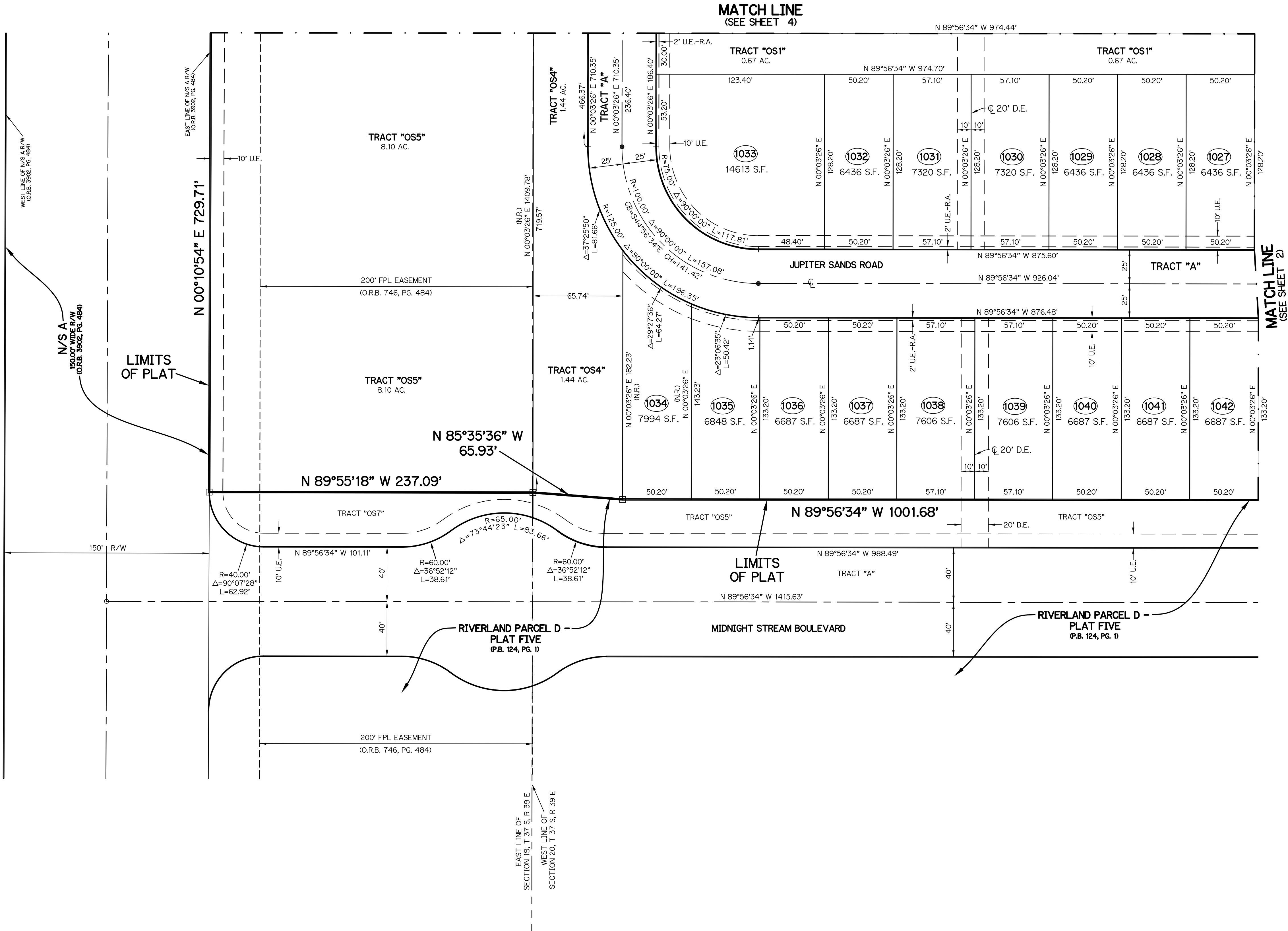
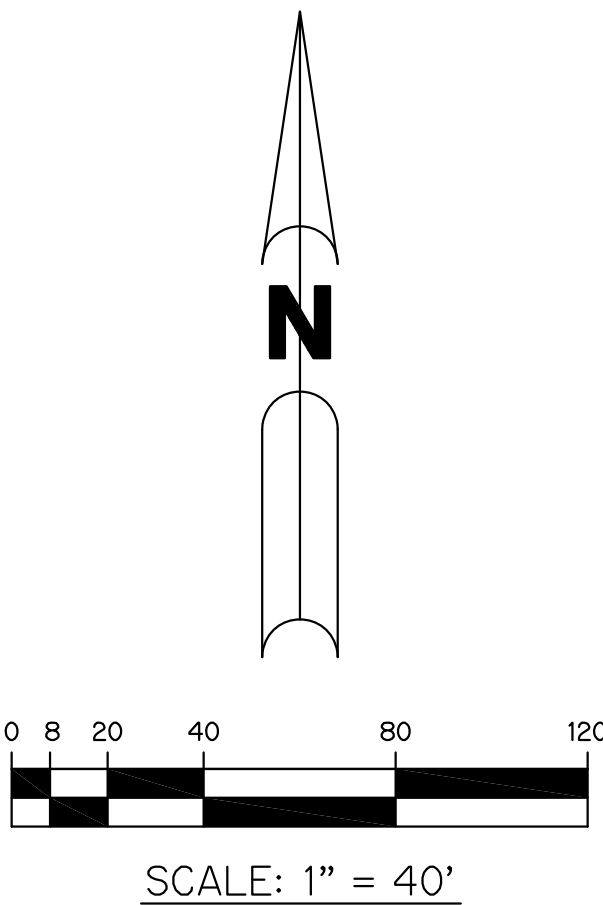


KEY MAP
N.T.S.

RIVERLAND PARCEL D - PLAT EIGHT

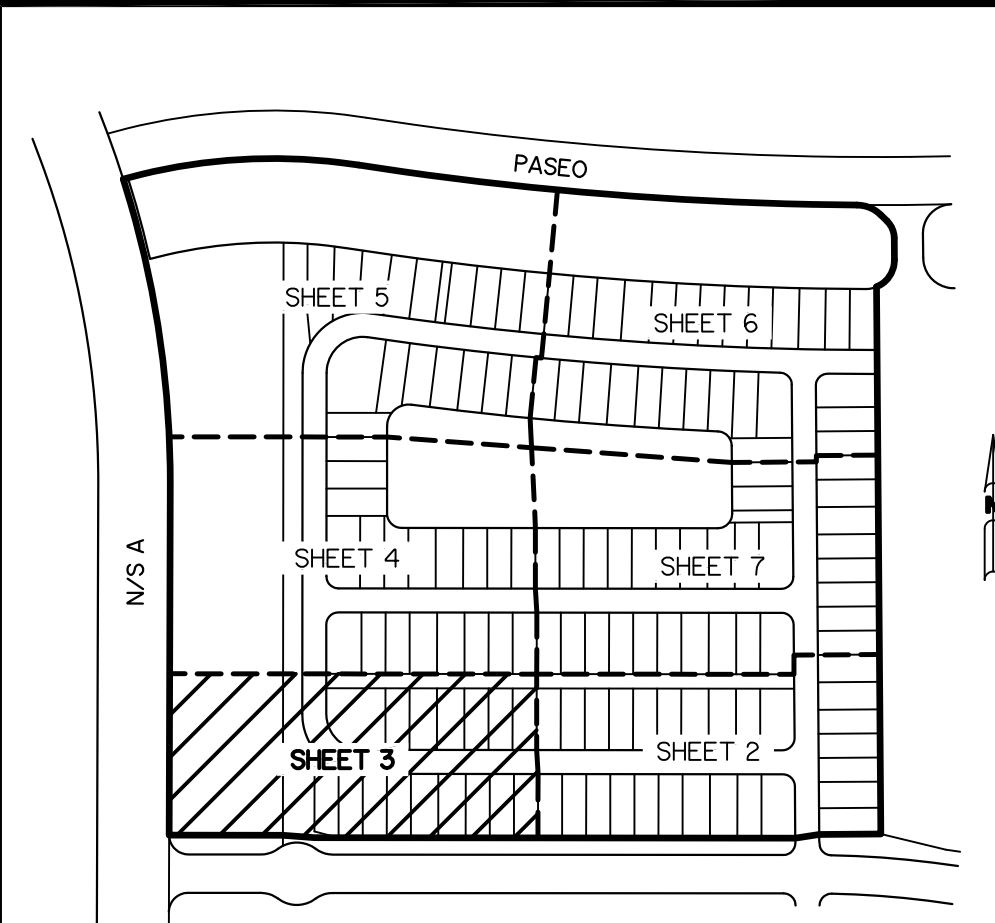
A PARCEL OF LAND LYING IN SECTIONS 19 AND 20, TOWNSHIP 37 SOUTH,
RANGE 39 EAST, CITY OF PORT ST. LUCIE, ST. LUCIE COUNTY, FLORIDA

SHEET 3 OF 7



- LEGEND:**
- - SET PERMANENT REFERENCE MONUMENT
5/8" IRON ROD 18" IN LENGTH WITH 1.5" CAP
STAMPED PRM L.B. #7741
 - - FOUND PERMANENT REFERENCE MONUMENT
5/8" IRON ROD 18" IN LENGTH WITH 1.5" CAP
STAMPED PRM L.B. #7741
 - - SET PERMANENT CONTROL POINT
NAIL WITH 1.25" DISK STAMPED PCP L.B. #7741
 - - FOUND PERMANENT CONTROL POINT
NAIL WITH 1.25" DISK STAMPED PCP L.B. #7741
 - Δ - DELTA ANGLE
 - AC. - ACRES
 - B.E. - BUFFER EASEMENT
 - CB - CHORD BEARING
 - CH - CHORD DISTANCE
 - CL - CENTERLINE
 - D.B. - DEED BOOK
 - D.E. - DRAINAGE EASEMENT
 - D.S.E. - DRAINAGE SWALE EASEMENT
 - L - ARC LENGTH
 - L.A.E. - LIMITED ACCESS EASEMENT
 - L.E. - LANDSCAPE EASEMENT
 - L.M.A.E. - LAKE MAINTENANCE ACCESS EASEMENT
 - L.M.E. - LAKE MAINTENANCE EASEMENT
 - N.R. - NOT RADIAL
 - N.R.T.R. - NOT RADIAL TO REAR
 - N.T.S. - NOT TO SCALE
 - O.R.B. - OFFICIAL RECORD BOOK
 - O.E. - MAINTENANCE & ROOF OVERHANG EASEMENT
 - P.B. - PLAT BOOK
 - P.C.P. - PERMANENT CONTROL POINT
 - P.C.S. - PAGES
 - P.O.B. - POINT OF BEGINNING
 - P.O.C. - POINT OF COMMENCEMENT
 - P.S.L.U.E. - PORT ST. LUCIE UTILITY EASEMENT
 - P.S.M. - PROFESSIONAL SURVEYOR AND MAPPER
 - R - RADIUS
 - R/W - RIGHT-OF-WAY
 - S.F. - SQUARE FEET
 - S.T. - SURVEY TIE
 - U.E. - UTILITY EASEMENT
 - RAD - RADIAL LINE
 - U.E.-R.A. - UTILITY EASEMENT-RESTRICTED AREA
 - P.C. - POINT OF CURVATURE
 - P.T. - POINT OF TANGENCY
 - P.R.C. - POINT OF REVERSE CURVATURE
 - P.N.R.I. - POINT OF NON-RADIAL INTERSECTION
 - P.R.I. - POINT OF RADIAL INTERSECTION
 - P.C.C. - POINT OF COMPOUND CURVATURE

THIS INSTRUMENT WAS PREPARED BY
PERRY C. WHITE, P.S.M. 4213, STATE OF FLORIDA
SAND & HILLS SURVEYING, INC.
8461 LAKE WORTH ROAD, SUITE 410
LAKE WORTH, FLORIDA 33467
LB-7741

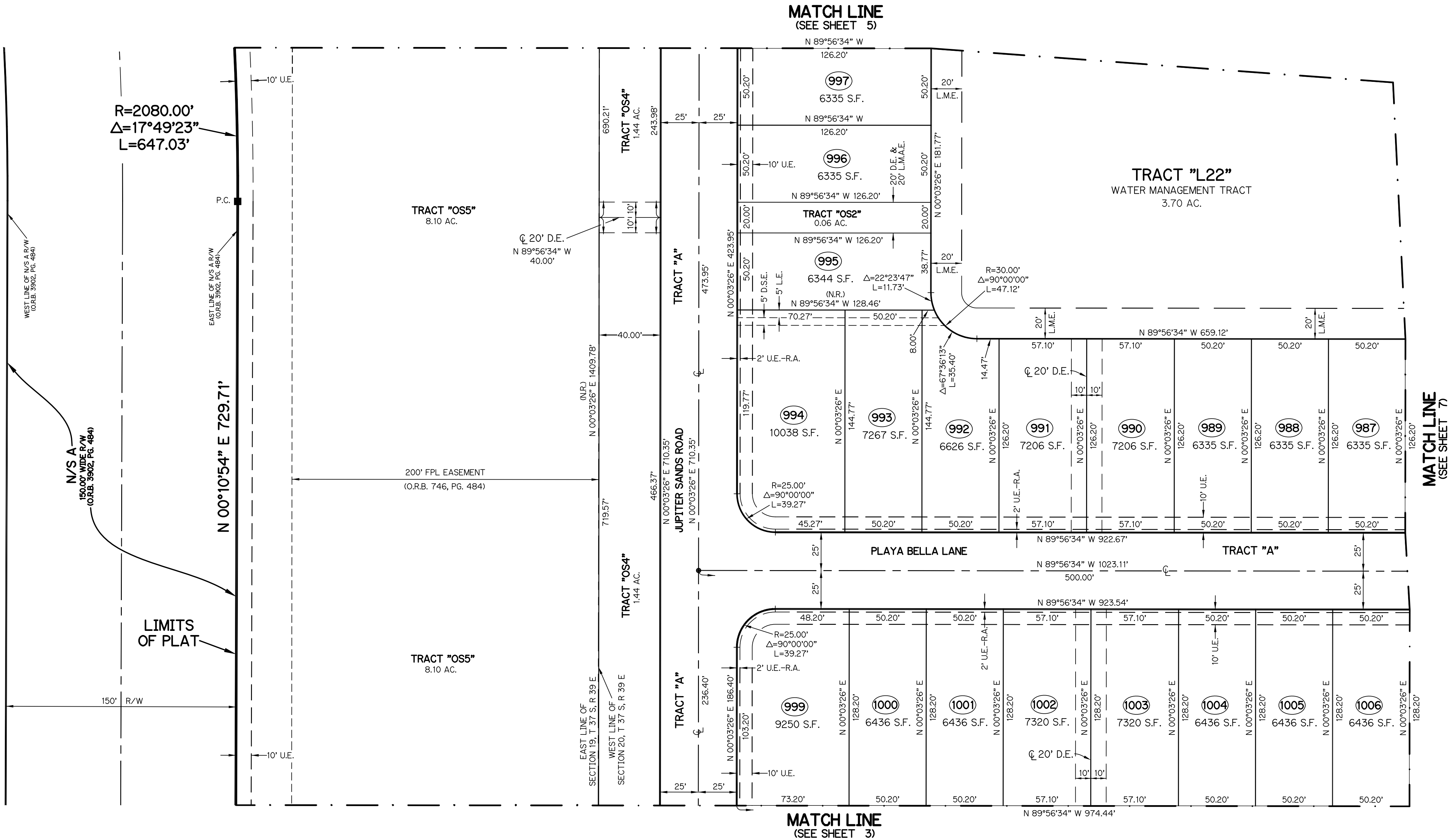
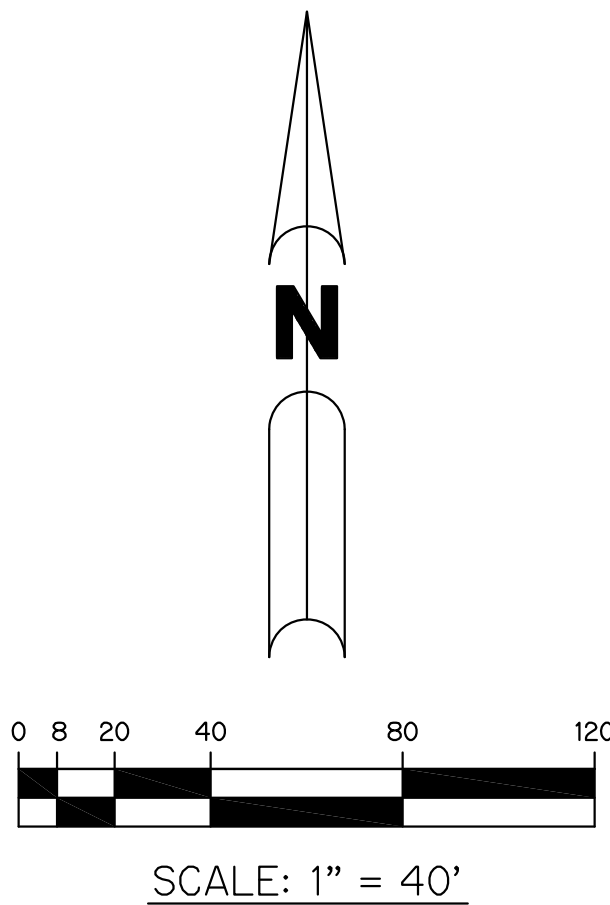


KEY MAP
N.T.S.

RIVERLAND PARCEL D - PLAT EIGHT

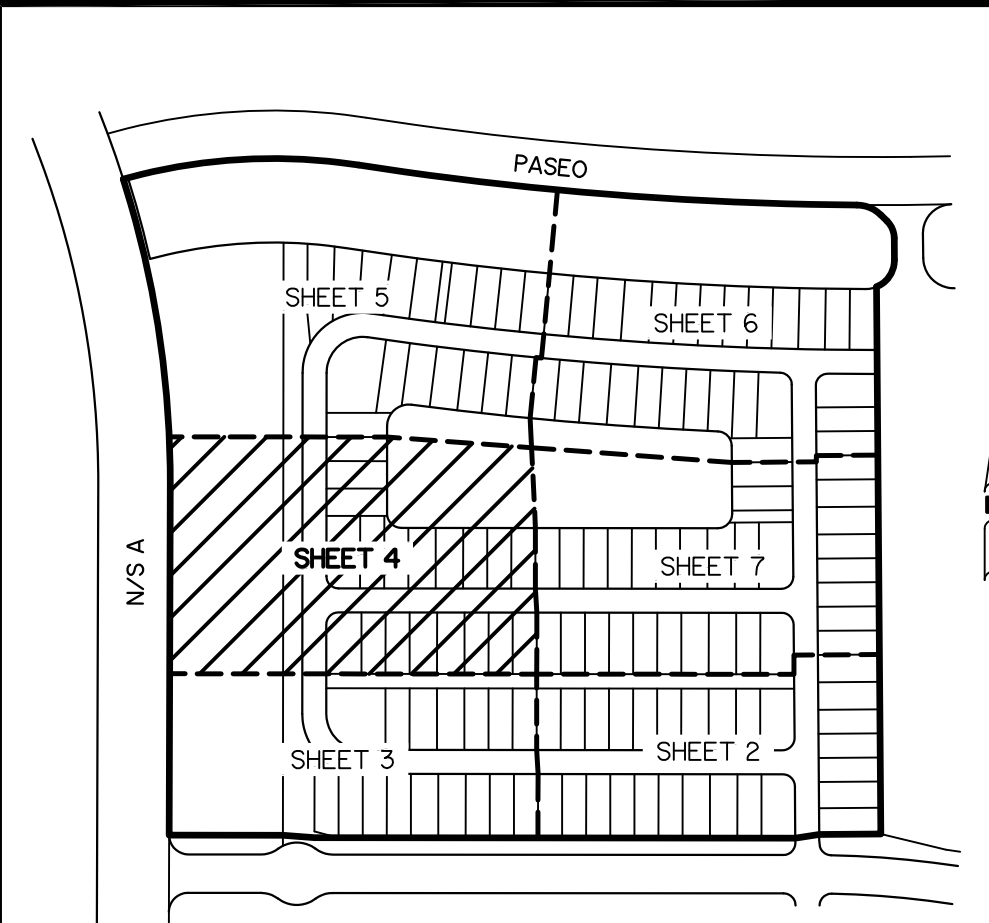
A PARCEL OF LAND LYING IN SECTIONS 19 AND 20, TOWNSHIP 37 SOUTH,
RANGE 39 EAST, CITY OF PORT ST. LUCIE, ST. LUCIE COUNTY, FLORIDA

SHEET 4 OF 7



- LEGEND:
- - SET PERMANENT REFERENCE MONUMENT
5/8" IRON ROD 18" IN LENGTH WITH 1.5" CAP
STAMPED PRM L.B. #7741
 - - FOUND PERMANENT REFERENCE MONUMENT
5/8" IRON ROD 18" IN LENGTH WITH 1.5" CAP
STAMPED PRM L.B. #7741
 - - SET PERMANENT CONTROL POINT
NAIL WITH 1.25" DISK STAMPED PCP L.B. #7741
 - - FOUND PERMANENT CONTROL POINT
NAIL WITH 1.25" DISK STAMPED PCP L.B. #7741
 - Δ - DELTA ANGLE
 - AC. - ACRES
 - B.E. - BUFFER EASEMENT
 - CB - CHORD BEARING
 - CH - CHORD DISTANCE
 - CL - CENTERLINE
 - D.B. - DEED BOOK
 - D.E. - DRAINAGE EASEMENT
 - D.S.E. - DRAINAGE SWALE EASEMENT
 - L - ARC LENGTH
 - L.A.E. - LIMITED ACCESS EASEMENT
 - L.E. - LANDSCAPE EASEMENT
 - L.M.A.E. - LAKE MAINTENANCE ACCESS EASEMENT
 - L.M.E. - LAKE MAINTENANCE EASEMENT
 - N.R. - NOT RADIAL
 - N.R.T.R. - NOT RADIAL TO REAR
 - N.T.S. - NOT TO SCALE
 - O.R.B. - OFFICIAL RECORD BOOK
 - O.E. - MAINTENANCE & ROOF OVERHANG EASEMENT
 - P.B. - PLAT BOOK
 - P.C.P. - PERMANENT CONTROL POINT
 - PGS. - PAGES
 - P.O.B. - POINT OF BEGINNING
 - P.O.C. - POINT OF COMMENCEMENT
 - P.S.L.U.E. - PORT ST. LUCIE UTILITY EASEMENT
 - P.S.M. - PROFESSIONAL SURVEYOR AND MAPPER
 - R - RADIUS
 - R/W - RIGHT-OF-WAY
 - S.F. - SQUARE FEET
 - S.T. - SURVEY TIE
 - U.E. - UTILITY EASEMENT
 - U.E. - UTILITY EASEMENT
 - U.E.-R.A. - UTILITY EASEMENT-RESTRICTED AREA
 - P.C. - POINT OF CURVATURE
 - P.T. - POINT OF TANGENCY
 - P.R.C. - POINT OF REVERSE CURVATURE
 - P.N.R.I. - POINT OF NON-RADIAL INTERSECTION
 - P.R.I. - POINT OF RADIAL INTERSECTION
 - P.C.C. - POINT OF COMPOUND CURVATURE

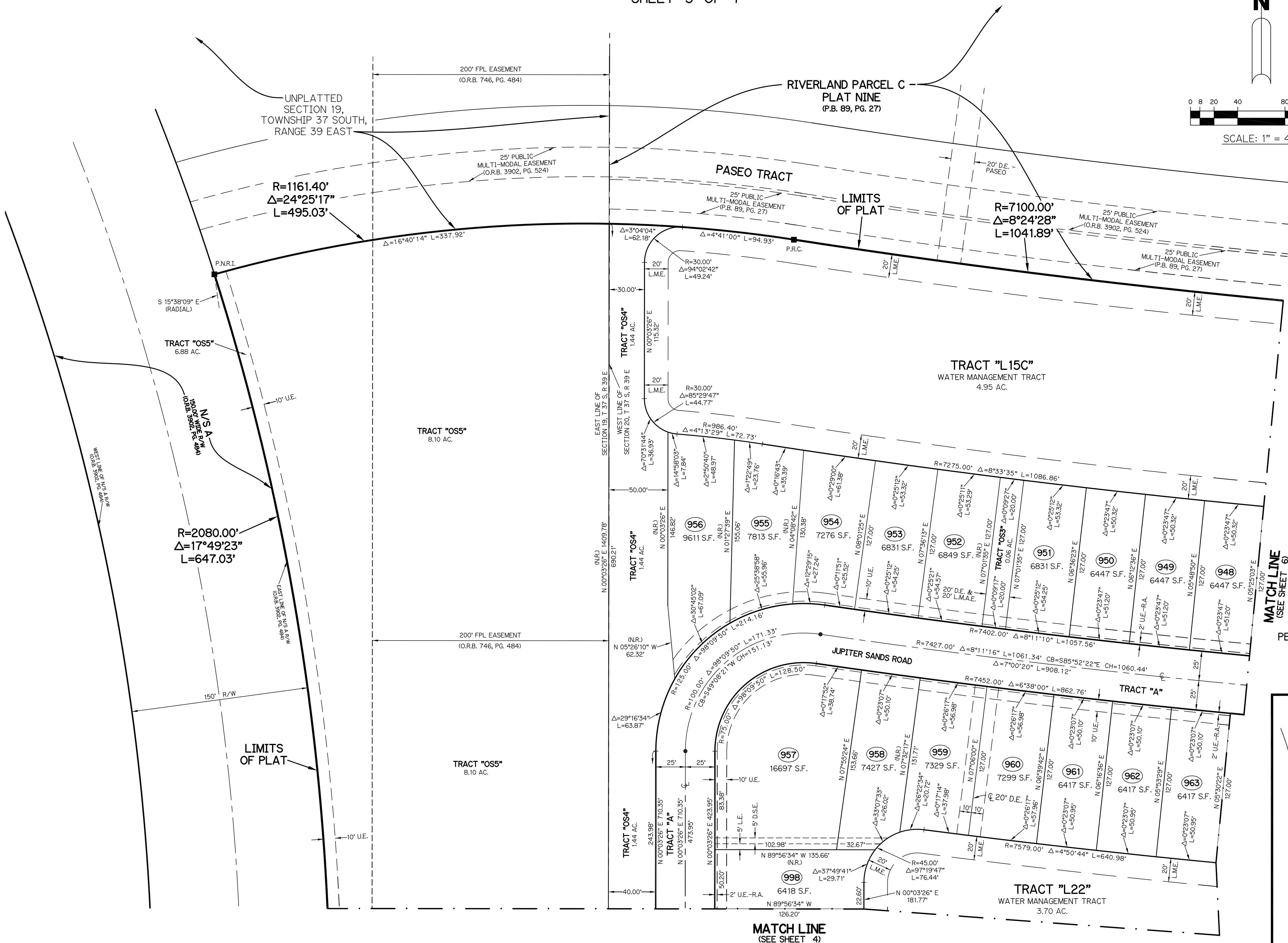
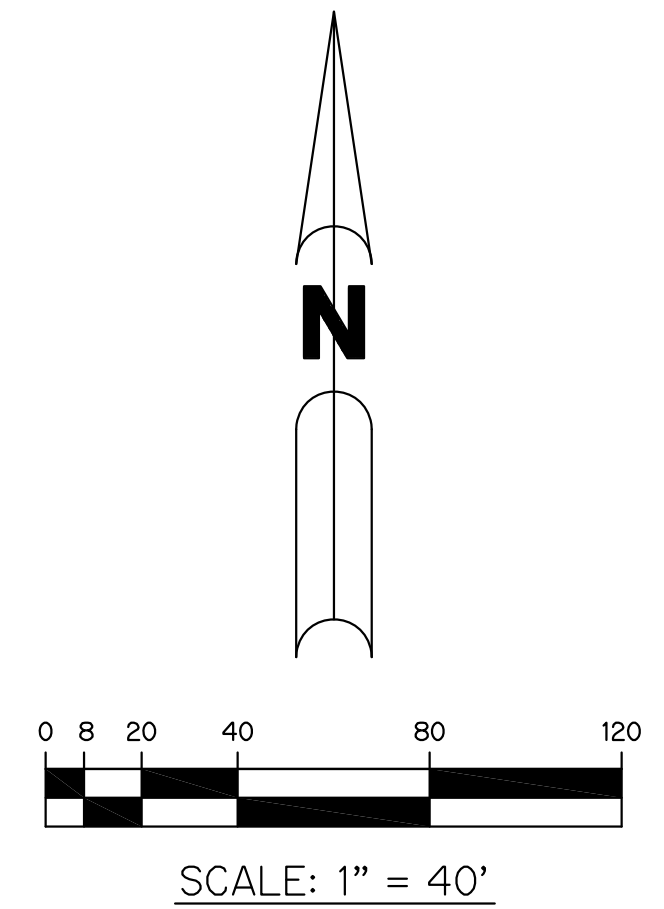
THIS INSTRUMENT WAS PREPARED BY
PERRY C. WHITE, P.S.M. 4213, STATE OF FLORIDA
SAND & HILLS SURVEYING, INC.
8461 LAKE WORTH ROAD, SUITE 410
LAKE WORTH, FLORIDA 33467
LB-7741



KEY MAP
N.T.S.

A PARCEL OF LAND LYING IN SECTIONS 19 AND 20, TOWNSHIP 37 SOUTH,
RANGE 39 EAST, CITY OF PORT ST. LUCIE, ST. LUCIE COUNTY, FLORIDA

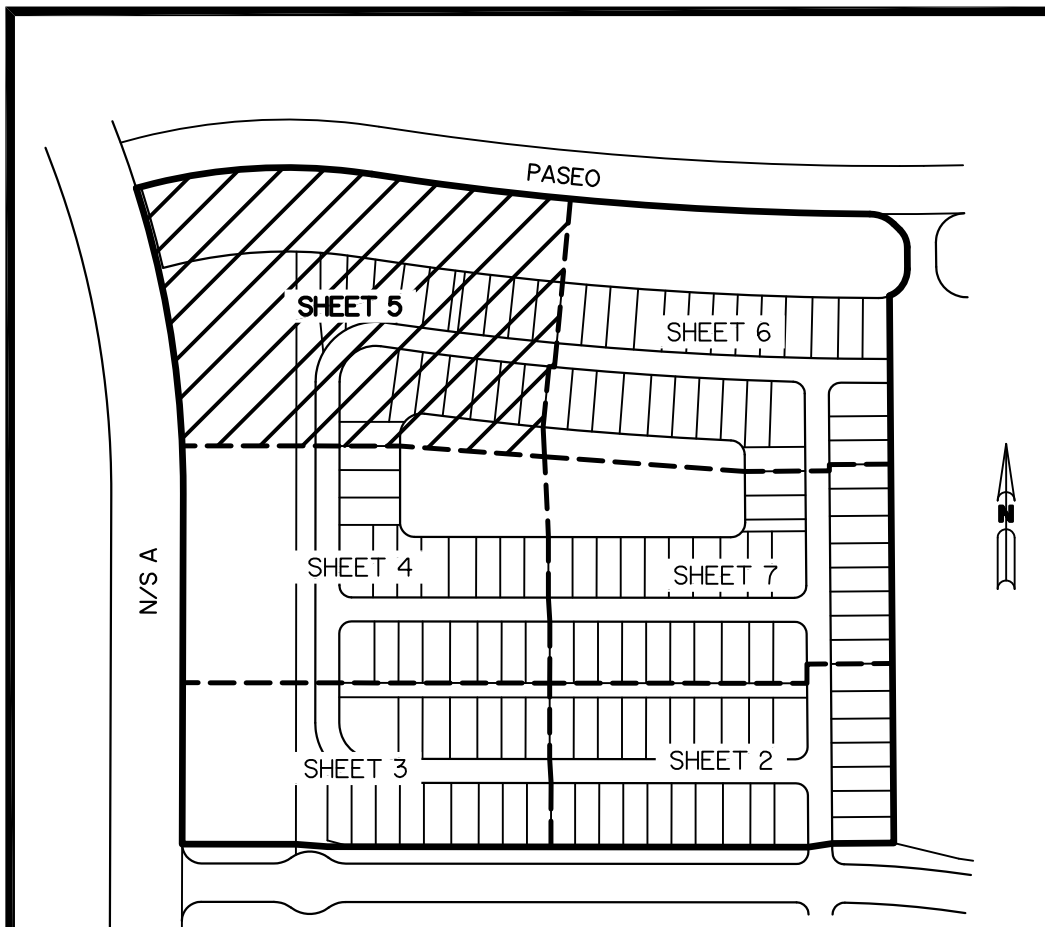
SHEET 5 OF 7



LEGEND:

- - SET PERMANENT REFERENCE MONUMENT
5/8" IRON ROD 18" IN LENGTH WITH 1.5" CAP
STAMPED PRM L.B. #7741
- - FOUND PERMANENT REFERENCE MONUMENT
5/8" IRON ROD 18" IN LENGTH WITH 1.5" CAP
STAMPED PRM L.B. #7741
- - SET PERMANENT CONTROL POINT
NAIL WITH 1/25" DISK STAMPED PCP L.B. #7741
- - FOUND PERMANENT CONTROL POINT
NAIL WITH 1/25" DISK STAMPED PCP L.B. #7741
- △ - DELTA ANGLE
- AC. - ACRES
- B.E. - BUFFER EASEMENT
- CB - CHORD BEARING
- CH - CHORD DISTANCE
- C. - CENTERLINE
- D.B. - DEED BOOK
- D.E. - DRAINAGE EASEMENT
- D.S.E. - DRAINAGE SWALE EASEMENT
- L. - ARC LENGTH
- L.A.E. - LIMITED ACCESS EASEMENT
- L.E. - LANDSCAPE EASEMENT
- L.M.A.E. - LAKE MAINTENANCE ACCESS EASEMENT
- L.M.E. - LAKE MAINTENANCE EASEMENT
- N.R. - NOT RADIAL
- N.R.T.R. - NOT RADIAL TO REAR
- N.T.S. - NOT TO SCALE
- O.R.B. - OFFICIAL RECORD BOOK
- O.E. - MAINTENANCE & ROOF OVERHANG EASEMENT
- P.B. - PLAT BOOK
- P.C.P. - PERMANENT CONTROL POINT
- PGS. - PAGES
- P.O.B. - POINT OF BEGINNING
- P.O.C. - POINT OF COMMENCEMENT
- P.S.L.U.E. - PORT ST. LUCIE UTILITY EASEMENT
- P.S.M. - PROFESSIONAL SURVEYOR AND MAPPER
- R. - RADIUS
- R/W. - RIGHT-OF-WAY
- S.F. - SQUARE FEET
- S.T. - SURVEY TIE
- U.E. - UTILITY EASEMENT
- RAD. - RADIAL LINE
- U.E.-R.A. - UTILITY EASEMENT-RESTRICTED AREA
- P.C. - POINT OF CURVATURE
- P.T. - POINT OF TANGENCY
- P.R.C. - POINT OF REVERSE CURVATURE
- P.N.R.I. - POINT OF NON-RADIAL INTERSECTION
- P.R.I. - POINT OF RADIAL INTERSECTION
- P.C.C. - POINT OF COMPOUND CURVATURE

THIS INSTRUMENT WAS PREPARED BY
PERRY C. WHITE, P.S.M. 4213, STATE OF FLORIDA
SAND & HILLS SURVEYING, INC.
8461 LAKE WORTH ROAD, SUITE 410
LAKE WORTH, FLORIDA 33467
LB-7741



KEY MAP
N.T.S.

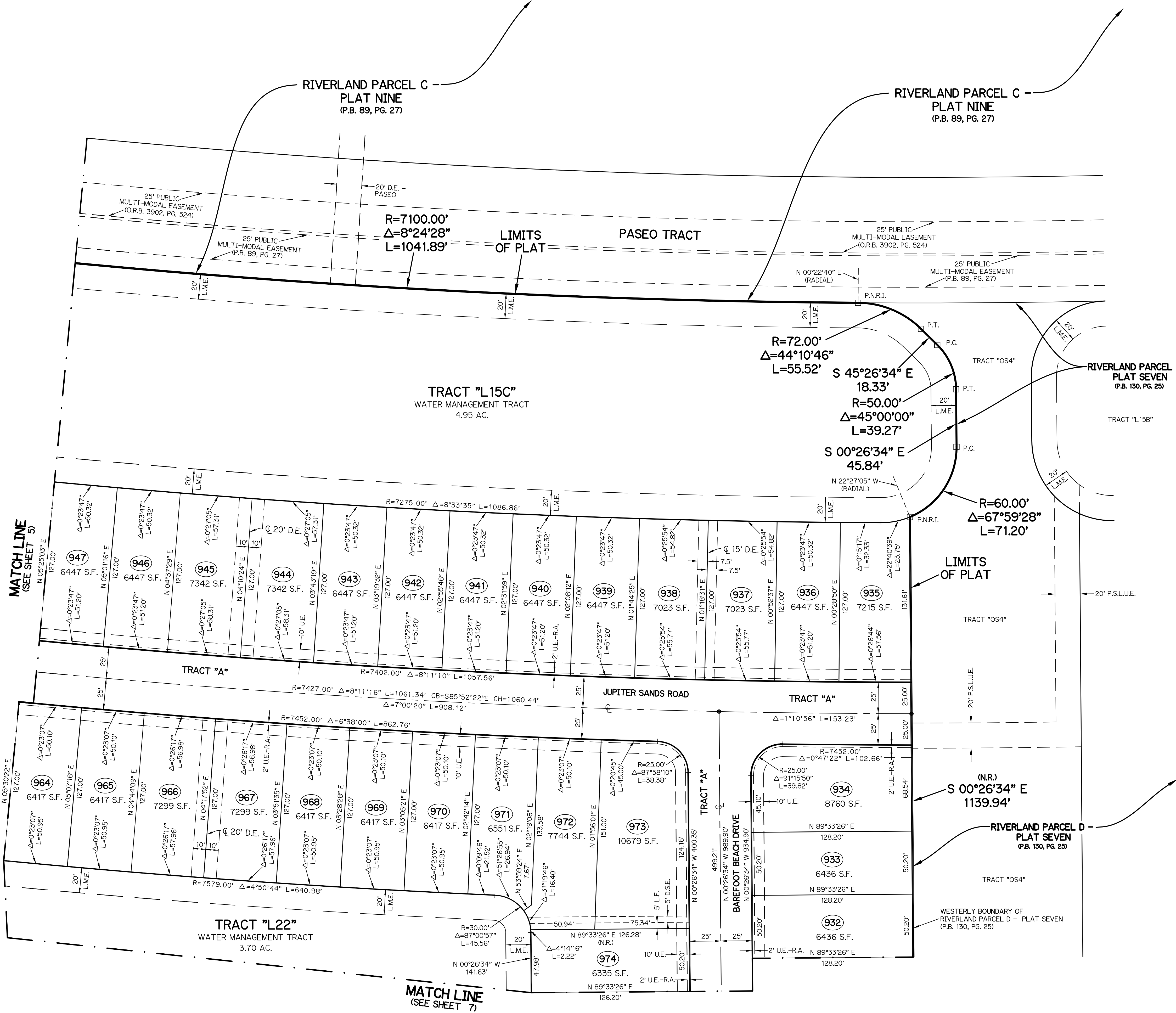
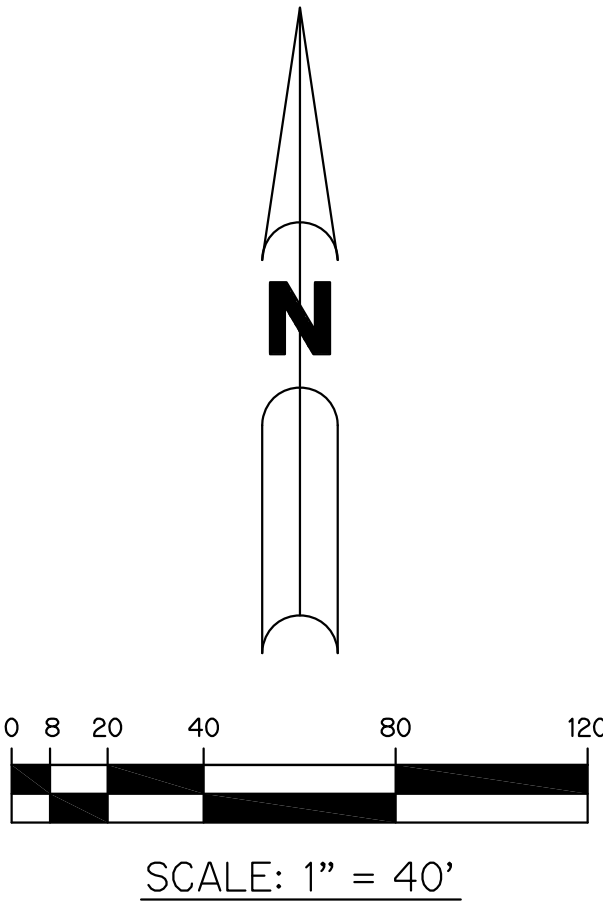
PSLUSD PROJECT # 5268H

SH0248 P24-075 SHEET 5 OF 7

RIVERLAND PARCEL D - PLAT EIGHT

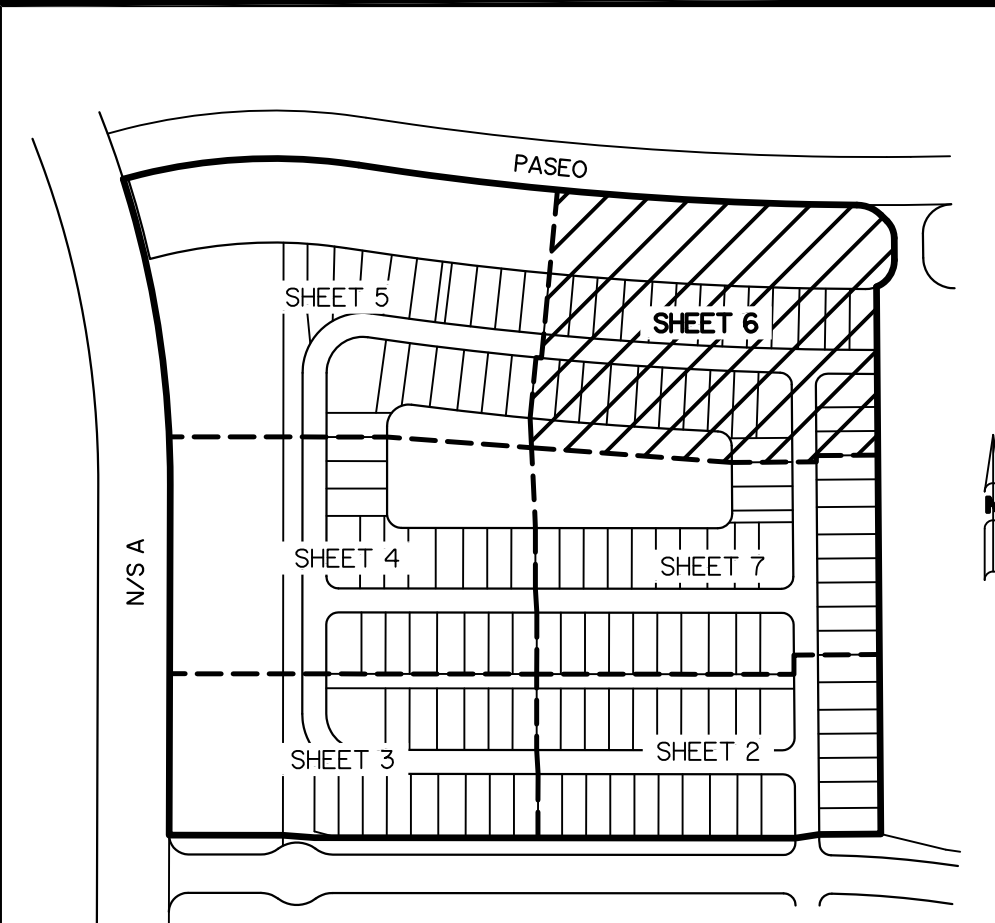
A PARCEL OF LAND LYING IN SECTIONS 19 AND 20, TOWNSHIP 37 SOUTH,
RANGE 39 EAST, CITY OF PORT ST. LUCIE, ST. LUCIE COUNTY, FLORIDA

SHEET 6 OF 7



- LEGEND:**
- - SET PERMANENT REFERENCE MONUMENT
5/8" IRON ROD 18" IN LENGTH WITH 1.5" CAP
STAMPED PRM L.B. #7741
 - - FOUND PERMANENT REFERENCE MONUMENT
5/8" IRON ROD 18" IN LENGTH WITH 1.5" CAP
STAMPED PRM L.B. #7741
 - - SET PERMANENT CONTROL POINT
NAIL WITH 1.25" DISK STAMPED PCP L.B. #7741
 - - FOUND PERMANENT CONTROL POINT
NAIL WITH 1.25" DISK STAMPED PCP L.B. #7741
 - Δ - DELTA ANGLE
 - AC - ACRES
 - B.E. - BUFFER EASEMENT
 - CB - CHORD BEARING
 - CH - CHORD DISTANCE
 - CL - CENTERLINE
 - D.B. - DEED BOOK
 - D.E. - DRAINAGE EASEMENT
 - D.S.E. - DRAINAGE SWALE EASEMENT
 - L - ARC LENGTH
 - L.A.E. - LIMITED ACCESS EASEMENT
 - L.E. - LANDSCAPE EASEMENT
 - L.M.A.E. - LAKE MAINTENANCE ACCESS EASEMENT
 - L.M.E. - LAKE MAINTENANCE EASEMENT
 - N.R. - NOT RADIAL
 - N.R.T.R. - NOT RADIAL TO REAR
 - N.T.S. - NOT TO SCALE
 - O.R.B. - OFFICIAL RECORD BOOK
 - O.E. - MAINTENANCE & ROOF OVERHANG EASEMENT
 - P.B. - PLAT BOOK
 - P.C.P. - PERMANENT CONTROL POINT
 - PGS. - PAGES
 - P.O.B. - POINT OF BEGINNING
 - P.O.C. - POINT OF COMMENCEMENT
 - P.S.L.U.E. - PORT ST. LUCIE UTILITY EASEMENT
 - P.S.M. - PROFESSIONAL SURVEYOR AND MAPPER
 - R - RADIUS
 - R/W - RIGHT-OF-WAY
 - S.F. - SQUARE FEET
 - S.T. - SURVEY TIE
 - U.E. - UTILITY EASEMENT
 - RAD - RADIAL LINE
 - U.E.-R.A. - UTILITY EASEMENT-RESTRICTED AREA
 - P.C. - POINT OF CURVATURE
 - P.T. - POINT OF TANGENCY
 - P.R.C. - POINT OF REVERSE CURVATURE
 - P.N.R.I. - POINT OF NON-RADIAL INTERSECTION
 - P.R.I. - POINT OF RADIAL INTERSECTION
 - P.C.C. - POINT OF COMPOUND CURVATURE

THIS INSTRUMENT WAS PREPARED BY
PERRY C. WHITE, P.S.M. 4213, STATE OF FLORIDA
SAND & HILLS SURVEYING, INC.
8461 LAKE WORTH ROAD, SUITE 410
LAKE WORTH, FLORIDA 33467
LB-7741

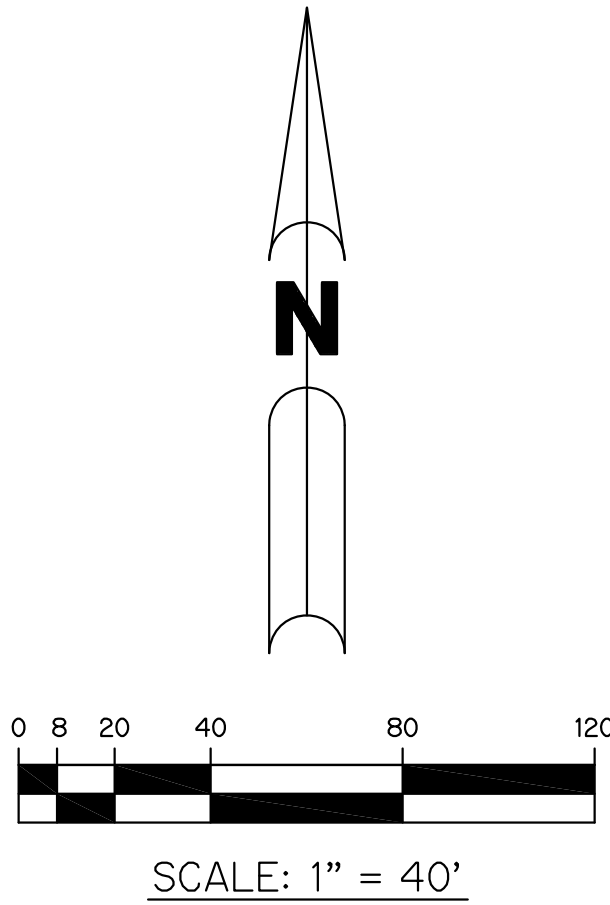


KEY MAP
N.T.S.

RIVERLAND PARCEL D - PLAT EIGHT

A PARCEL OF LAND LYING IN SECTIONS 19 AND 20, TOWNSHIP 37 SOUTH,
RANGE 39 EAST, CITY OF PORT ST. LUCIE, ST. LUCIE COUNTY, FLORIDA

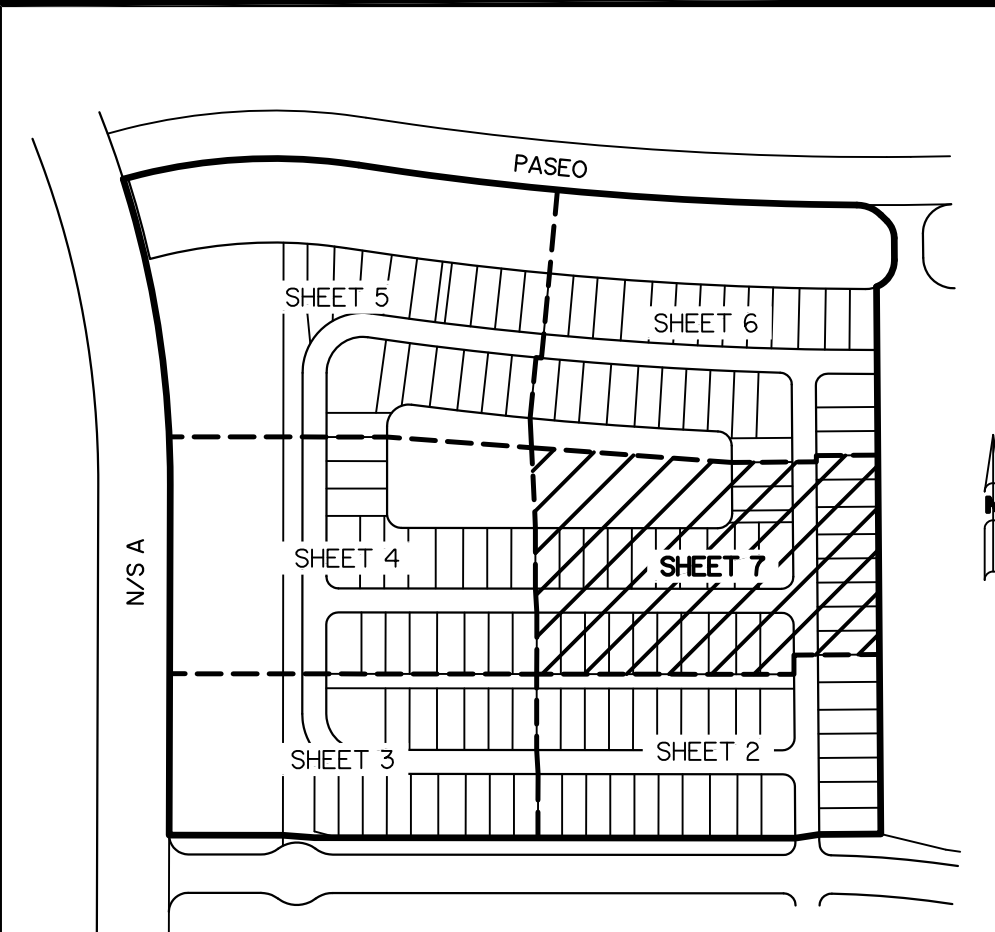
SHEET 7 OF 7



LEGEND:

- - SET PERMANENT REFERENCE MONUMENT
5/8" IRON ROD 18" IN LENGTH WITH 1.5" CAP
STAMPED PRM L.B. #7741
- - FOUND PERMANENT REFERENCE MONUMENT
5/8" IRON ROD 18" IN LENGTH WITH 1.5" CAP
STAMPED PRM L.B. #7741
- - SET PERMANENT CONTROL POINT
NAIL WITH 1.25" DISK STAMPED PCP L.B. #7741
- - FOUND PERMANENT CONTROL POINT
NAIL WITH 1.25" DISK STAMPED PCP L.B. #7741
- Δ - DELTA ANGLE
- AC - ACRES
- B.E. - BUFFER EASEMENT
- CB - CHORD BEARING
- CH - CHORD DISTANCE
- CL - CENTERLINE
- D.B. - DEED BOOK
- D.E. - DRAINAGE EASEMENT
- D.S.E. - DRAINAGE SWALE EASEMENT
- L - ARC LENGTH
- L.A.E. - LIMITED ACCESS EASEMENT
- LE - LANDSCAPE EASEMENT
- L.M.A.E. - LAKE MAINTENANCE ACCESS EASEMENT
- L.M.E. - LAKE MAINTENANCE EASEMENT
- N.R. - NOT RADIAL
- N.R.T.R. - NOT RADIAL TO REAR
- N.T.S. - NOT TO SCALE
- O.R.B. - OFFICIAL RECORD BOOK
- O.E. - MAINTENANCE & ROOF OVERHANG EASEMENT
- P.B. - PLAT BOOK
- P.C.P. - PERMANENT CONTROL POINT
- PGS. - PAGES
- P.O.B. - POINT OF BEGINNING
- P.O.C. - POINT OF COMMENCEMENT
- P.S.L.U.E. - PORT ST. LUCIE UTILITY EASEMENT
- P.S.M. - PROFESSIONAL SURVEYOR AND MAPPER
- R - RADIUS
- R/W - RIGHT-OF-WAY
- S.F. - SQUARE FEET
- S.T. - SURVEY TIE
- U.E. - UTILITY EASEMENT
- RAD - RADIAL LINE
- U.E.-R.A. - UTILITY EASEMENT-RESTRICTED AREA
- P.C. - POINT OF CURVATURE
- P.T. - POINT OF TANGENCY
- P.R.C. - POINT OF REVERSE CURVATURE
- P.N.R.I. - POINT OF NON-RADIAL INTERSECTION
- P.R.I. - POINT OF RADIAL INTERSECTION
- P.C.C. - POINT OF COMPOUND CURVATURE

THIS INSTRUMENT WAS PREPARED BY
PERRY C. WHITE, P.S.M. 4213, STATE OF FLORIDA
SAND & HILLS SURVEYING, INC.
8461 LAKE WORTH ROAD, SUITE 410
LAKE WORTH, FLORIDA 33467
LB-7741



KEY MAP
N.T.S.