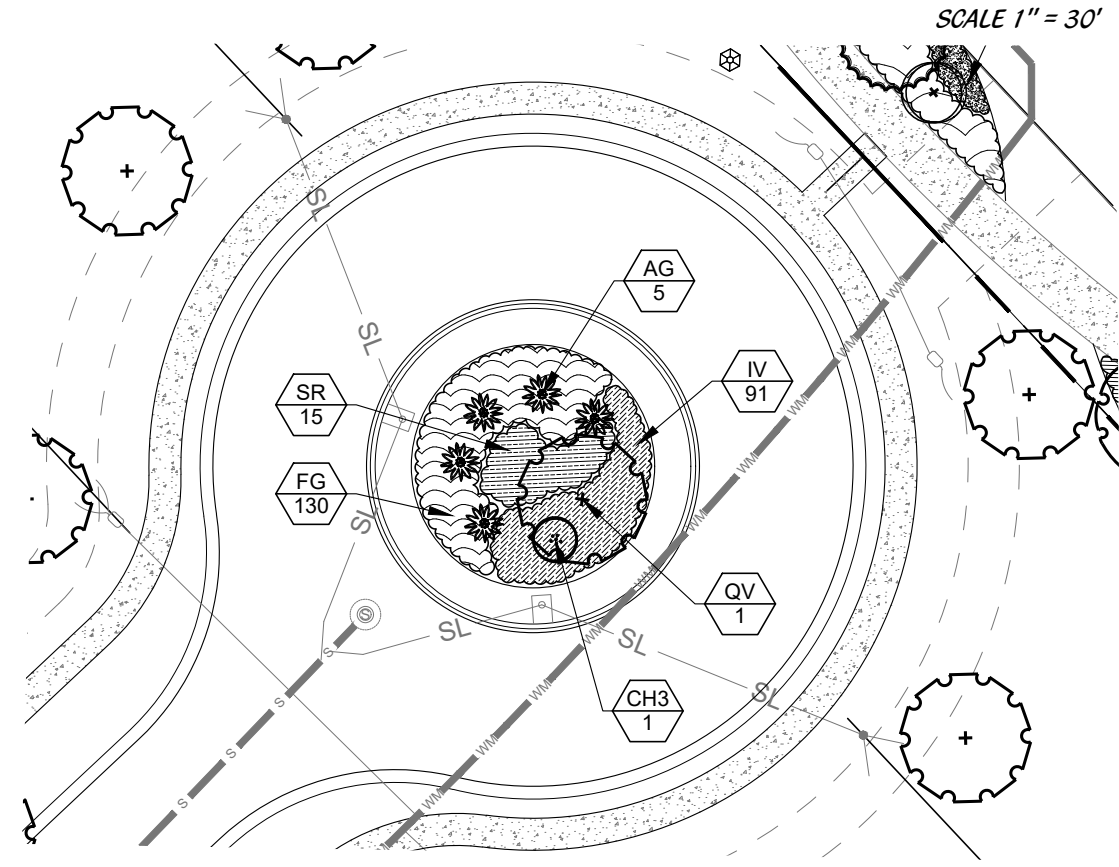
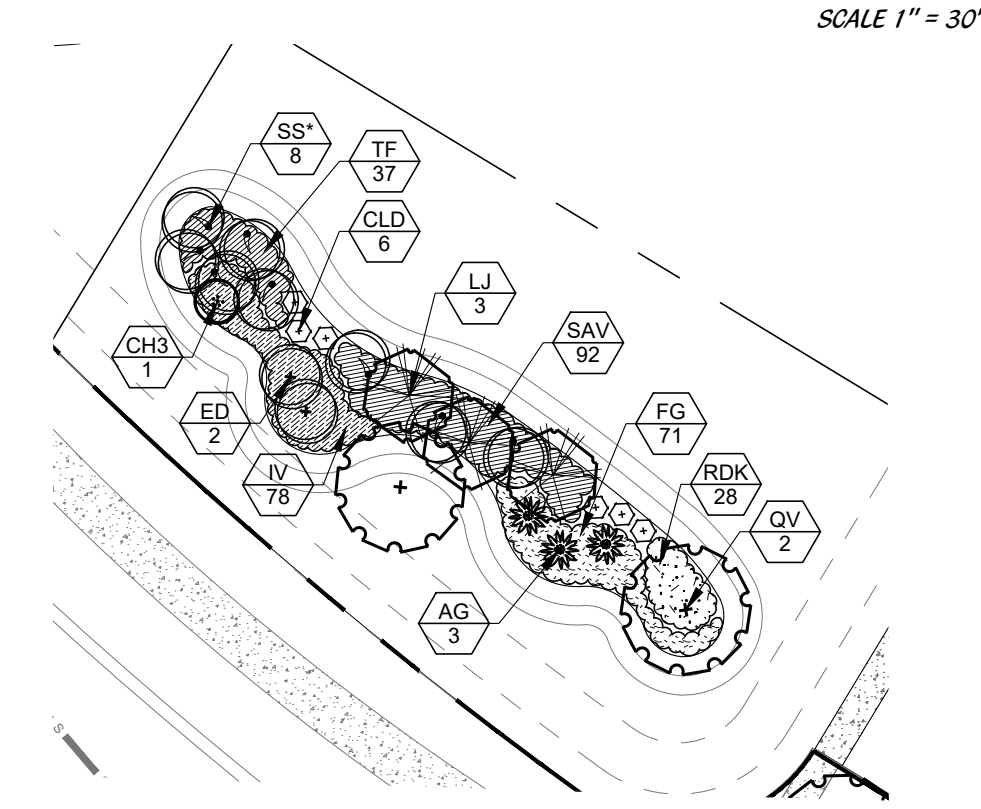


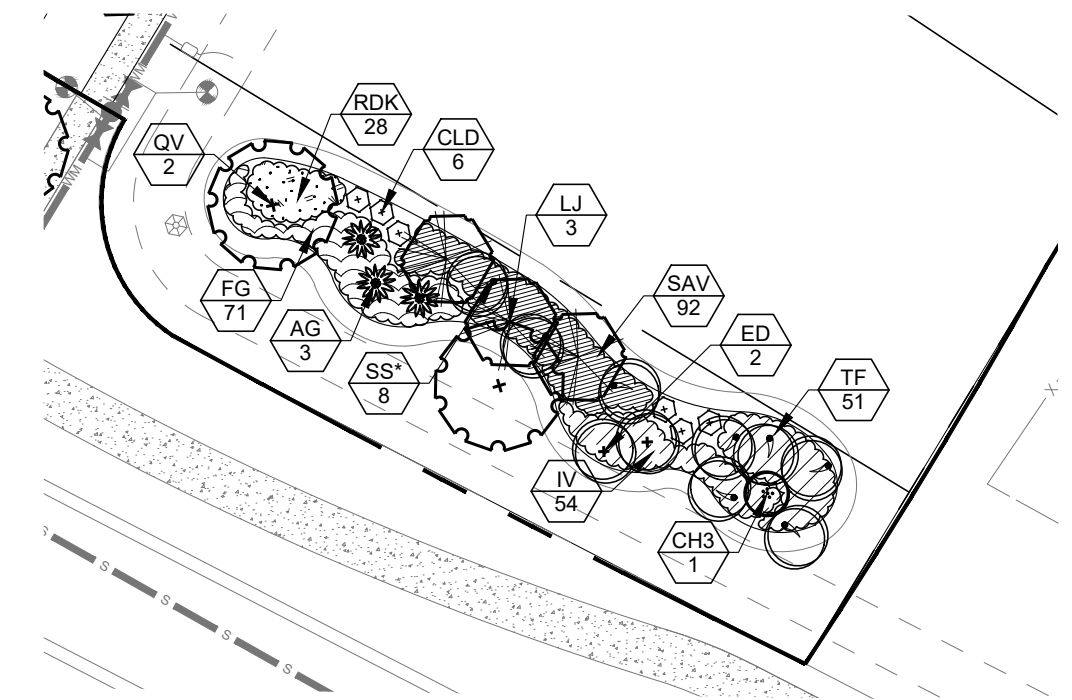
COMMON AREA 1



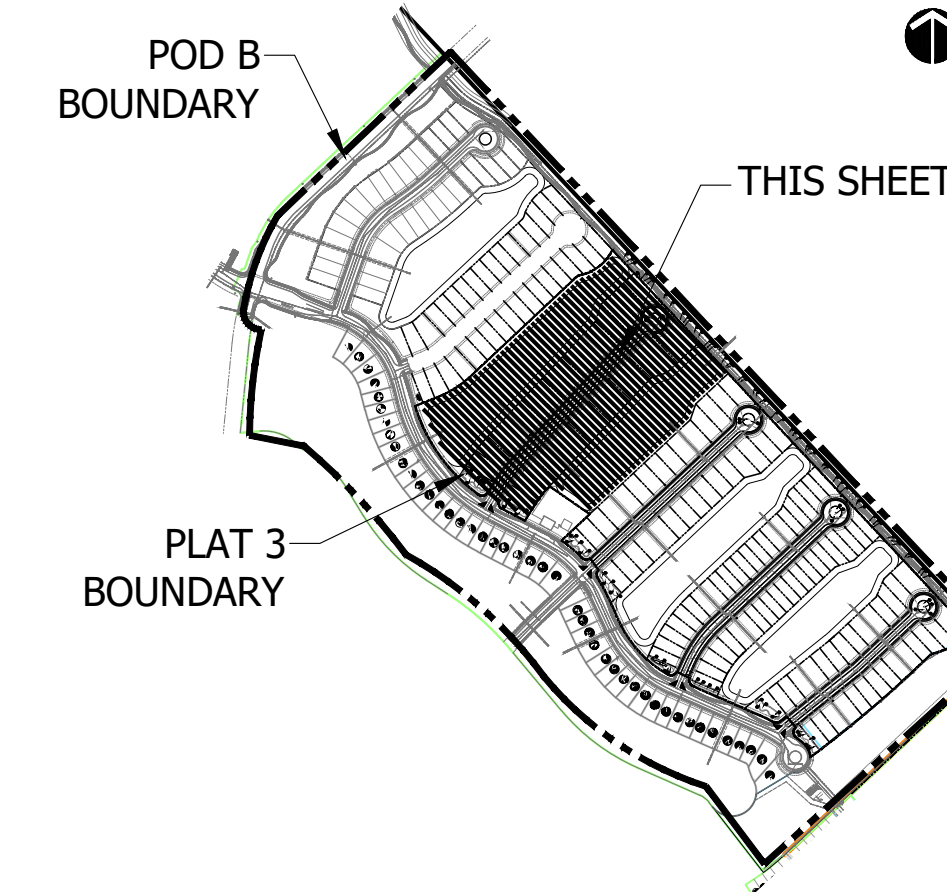
COMMON AREA 2



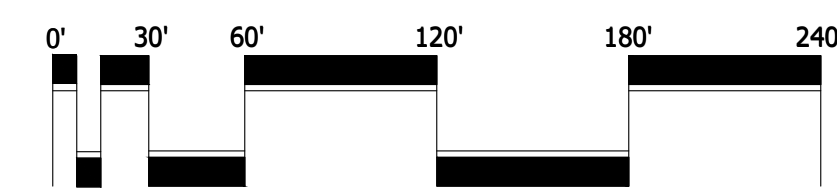
COMMON AREA 3



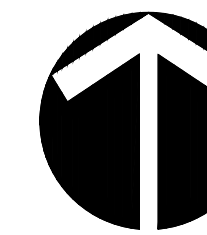
KEY MAP



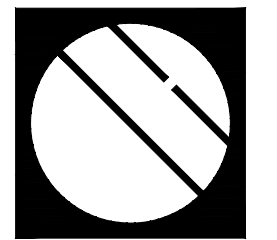
PSLUSD PROJ# 11-652-31C
 PSL PROJ# P20-134
 POD B P&F PLAT 3



Scale: 1" = 60'-0"



North



Cotleur & Hearing

Landscape Architects
 Land Planners
 Environmental Consultants
 1934 Commerce Lane
 Suite 1
 Jupiter, Florida 33458
 561.747.6336 · Fax 747.1377
 www.cotleurhearing.com
 Lic# LC-C000239

VERANO SOUTH POD B 3

Kolter Homes
 Port St. Lucie, Florida

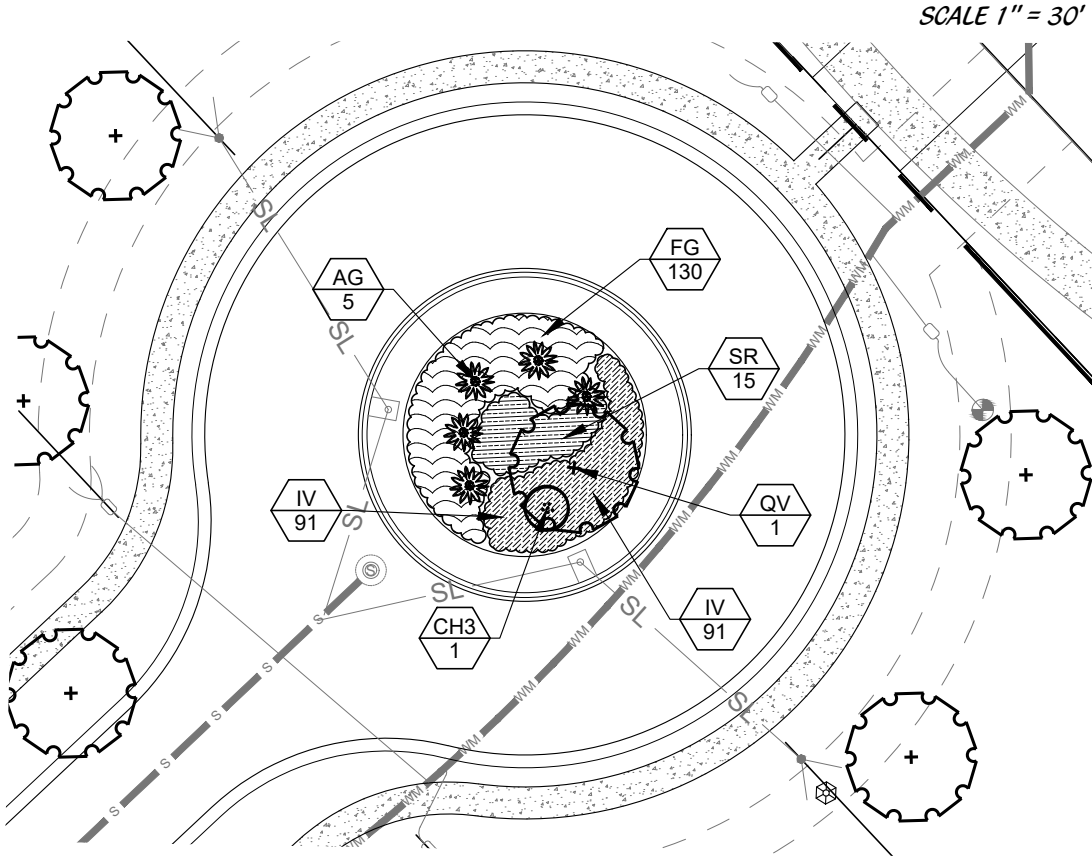
| | |
|-----------|----------|
| DESIGNED | DTS |
| DRAWN | LAH |
| DATE | 07-17-20 |
| REVISIONS | 09-22-20 |
| | 10-16-20 |

October 16, 2020 2:53:3 p.m.
 Drawing: 17-0202_PLAT_3_09-21-20.DWG

SHEET 1 OF 4

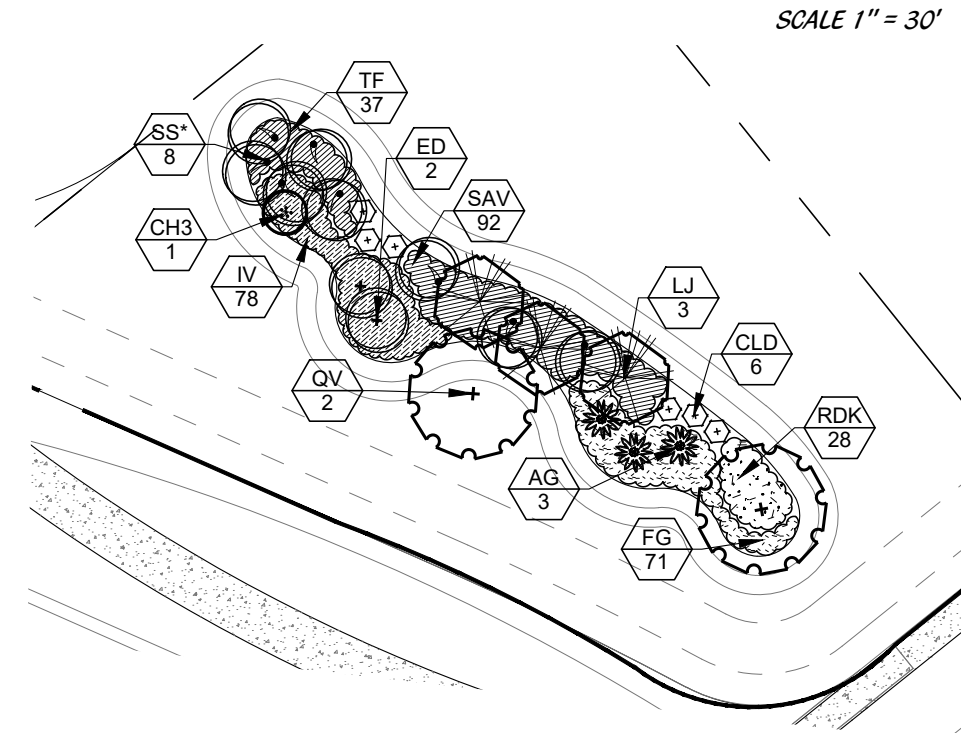
© COTLEUR & HEARING, INC.
 These drawings are the property of the architect and are not to be used for extensions or on other projects except by agreement in writing with the architect. Immediately report any discrepancies to the architect.

COMMON AREA 10



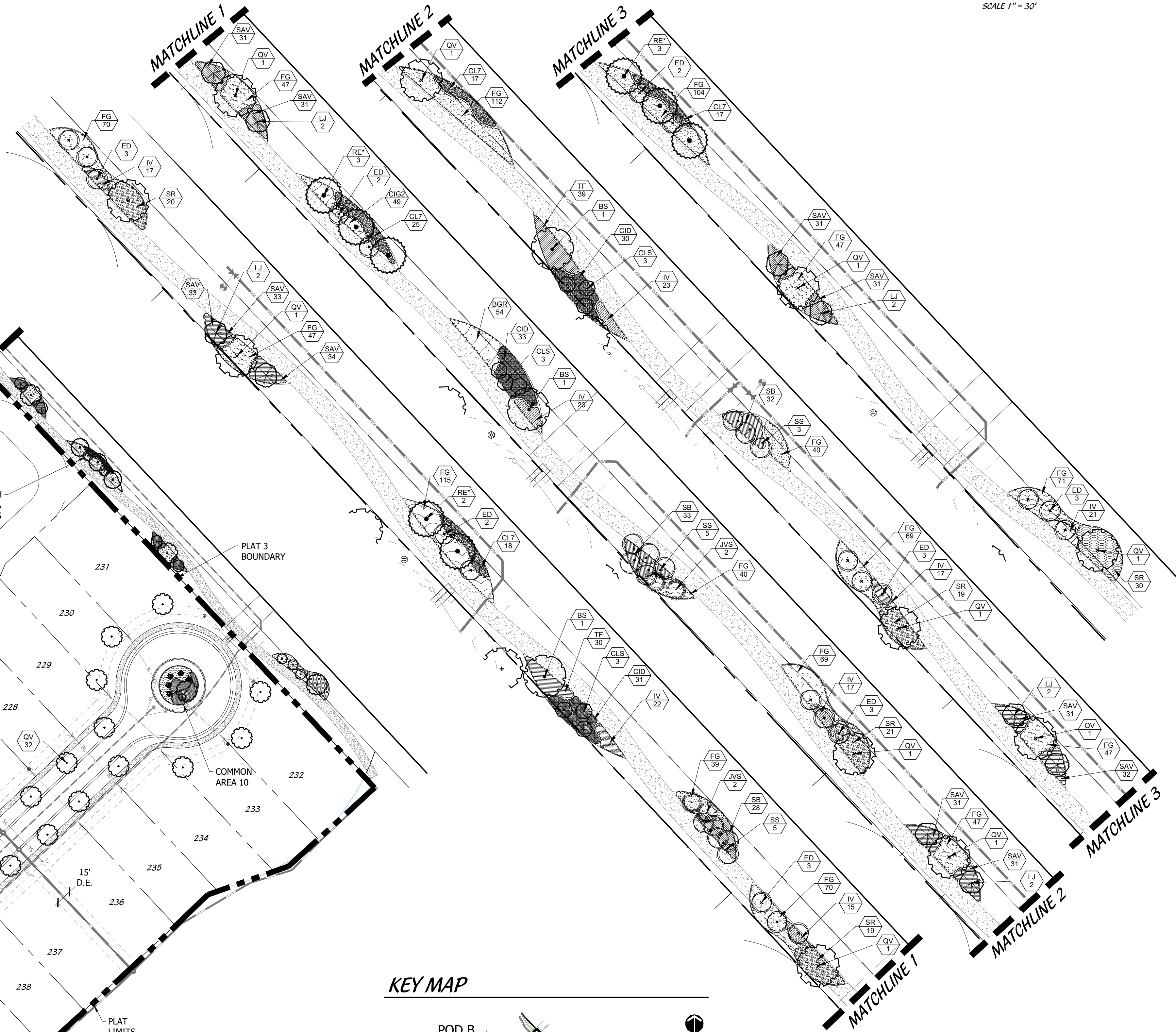
SCALE 1" = 30'

COMMON AREA 11



SCALE 1" = 30'

PATH COMMON AREA PLANTINGS



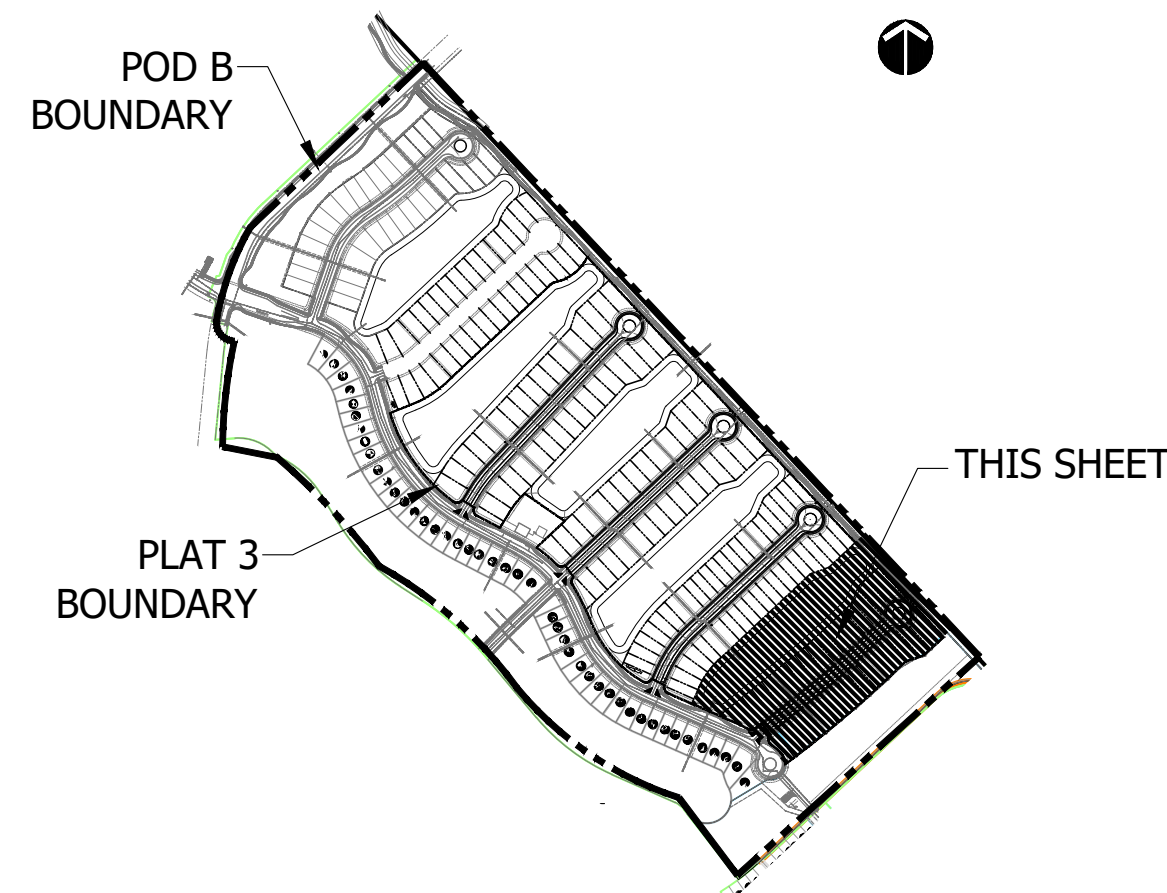
SCALE 1" = 30'

COMMON AREA 12

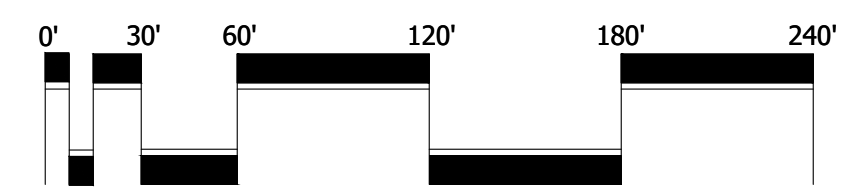


SCALE 1" = 30'

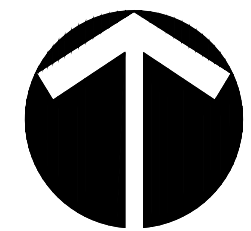
KEY MAP



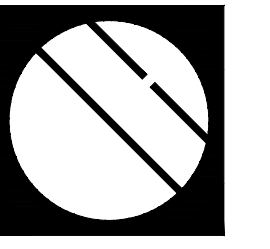
PSLUSD PROJ# 11-652-31C
 PSL PROJ# P20-134
 POD B P&F PLAT 3



Scale: 1" = 60'-0"



North



Cotleur & Hearing

Landscape Architects
 Land Planners
 Environmental Consultants
 1934 Commerce Lane
 Suite 1
 Jupiter, Florida 33458
 561.747.6336 • Fax 747.1377
 www.cotleurhearing.com
 Lic# LC-C000239

VERANO SOUTH POD B 3

Kolter Homes
 Port St. Lucie, Florida

| | |
|-----------|----------|
| DESIGNED | DTS |
| DRAWN | LAH |
| DATE | 07-17-20 |
| REVISIONS | 09-22-20 |
| | 10-16-20 |

October 16, 2020 2:53:3 p.m.
 Drawing: 17-0202_PLAT 3_09-21-20.DWG

SHEET 3 OF 4

© COTLEUR & HEARING, INC.
 These drawings are the property of the architect and are not to be used for extensions or on other projects except by agreement in writing with the architect. Immediately report any discrepancies to the architect.

LANDSCAPE SPECIFICATIONS

1. GENERAL LANDSCAPE REQUIREMENTS

LANDSCAPE CONTRACT WORK INCLUDES, BUT IS NOT LIMITED TO, SOIL PREPARATION, FINE OR FINISH GRADING, FURNISHING AND INSTALLING PLANT MATERIAL, WATERING, STAKING, GUYING AND MULCHING.

PLANT SIZE AND QUALITY

TREES, PALMS, SHRUBS, GROUNDCOVERS: PLANT SPECIES AND SIZES SHALL CONFORM TO THOSE INDICATED ON THE DRAWINGS. Nomenclature shall conform to STANDARD PLANT NAMES, 1942 EDITION. ALL NURSERY STOCK SHALL BE IN ACCORDANCE WITH GRADING AND STANDARD FOR NURSERY PLANTS PARTS 1 & 11 LATEST EDITION PUBLISHED BY THE FLORIDA DEPARTMENT OF AGRICULTURE AND CONSUMER SERVICES.

ALL CONTAINER GROWN PLANTS SHALL BE HEALTHY, VIGOROUS, WELL-ROOTED PLANTS AND ESTABLISHED IN THE CONTAINER IN WHICH THEY ARE SOLD.

AN ESTABLISHED CONTAINER GROWN PLANT SHALL BE TRANSLANTED INTO A CONTAINER AND GROWN IN THAT CONTAINER SUFFICIENTLY LONG ENOUGH FOR THE NEW FIBROUS ROOTS TO HAVE DEVELOPED TO THE POINT THAT THE ROOT MASS WILL REMAIN ITS SHAPE AND HOLD TOGETHER WHEN REMOVED FROM THE CONTAINER.

MULCH SHALL BE SHREDDED CYPRESS MULCH. ALL MULCH IS TO BE APPLIED TO A DEPTH OF 3" EXCEPT FOR THOSE SPECIFIC SITUATIONS SHOWN BELOW IN SECTIONS 2.3 & 4.

FERTILIZER IN BACKFILL MIXTURE FOR ALL PLANTS SHALL CONSIST OF MILORGANIC ACTIVATED SLUDGE MIXED WITH THE BACKFILL AT A RATE OF NOT LESS THAN 50 LBS. PER CUBIC YARD.

FERTILIZER FOR TREES AND SHRUBS MAY BE TABLET FORM OR GRANULAR. GRANULAR FERTILIZER SHALL BE UNIFORM IN COMPOSITION, DRY AND FREE-FLOWING. THIS FERTILIZER SHALL BE DELIVERED TO THE SITE IN THE ORIGINAL UNOPENED BAGS, EACH BEARING THE MANUFACTURER'S STATEMENT OF ANALYSIS, AND SHALL MEET THE FOLLOWING REQUIREMENTS: 16% NITROGEN, 7% PHOSPHORUS, 12% POTASSIUM, PLUS IRON, TABLET FERTILIZER (AGRIFORM OR EQUAL) AT 21 GRAM SIZE SHALL MEET THE FOLLOWING REQUIREMENTS: 20% NITROGEN, 10% PHOSPHORUS AND 5% POTASSIUM.

FERTILIZER WILL BE APPLIED AT THE FOLLOWING RATES:

Table with 3 columns: PLANT SIZE, AGRIFORM TABLETS* (21 GRAM), and values.

Table with 3 columns: PLANT SIZE, AGRIFORM TABLETS* (21 GRAM), and values.

FLORIDA EAST COAST PALM SPECIAL SHALL BE APPLIED TO ALL PALMS AT INSTALLATION AT A RATE OF .5 LB. PER INCH OF TRUNK UNLESS OTHERWISE SPECIFIED.

FIELD GROWN TREES AND PALMS PREVIOUSLY ROOT PRUNED SHALL OBTAIN A ROOT BALL WITH SUFFICIENT ROOTS FOR CONTINUED GROWTH WITHOUT SETTLING SHOCK.

CONTRACTOR SHALL NOT MARK OR SCAR TRUNK IN ANY FASHION.

PLANTS SHALL BE WATERED AS NECESSARY OR WITHIN 24 HOURS AFTER NOTIFICATION BY THE LANDSCAPE ARCHITECT.

THE LOCATIONS OF PLANTS, AS SHOWN IN THESE PLANS, ARE APPROXIMATE. THE FINAL LOCATIONS MAY BE ADJUSTED TO ACCOMMODATE UNFORESEEN FIELD CONDITIONS. MAJOR ADJUSTMENTS TO THE LAYOUT ARE TO BE APPROVED BY THE LANDSCAPE ARCHITECT.

ALL PLASTIC FABRIC SHALL BE REMOVED FROM PLANT MATERIAL AT TIME OF INSTALLATION.

ALL TREES MUST BE STAKED AS SHOWN ON THE PLANTING DETAILS WITHIN 24 HOURS OF PLANTING. STAKES TO REMAIN FOR A MINIMUM OF 9 MONTHS, BUT NO LONGER THAN 18 MONTHS. CONTRACTOR IS RESPONSIBLE FOR MAINTENANCE AND REMOVAL OF THE STAKES.

ALL TREES MUST BE PRUNED AS PER LANDSCAPE ARCHITECT'S DIRECTION. SABAL PALMS MAY BE HURRICANE CUT.

ALL SHRUBS, TREES AND GROUND COVER WILL HAVE IMPROVED SOIL AS PER PLANTING SOIL NOTES. THE SOIL SHALL BE PLACED IN THE HOLE DURING PLANTING. TOP DRESSING IS NOT ACCEPTABLE.

DO NOT ALLOW AIR POCKETS TO FORM WHEN BACKFILLING. ALL TREES SHALL BE SPIKED IN UTILIZING WATER AND A TREE BAR.

THE LANDSCAPE CONTRACTOR SHALL WATER, MULCH, WEED, PRUNE, AND OTHERWISE MAINTAIN ALL PLANTS, INCLUDING SOD, UNTIL COMPLETION OF CONTRACT OR ACCEPTANCE BY LANDSCAPE ARCHITECT. SETTLED SOIL SHALL BE RESET TO PROPER GRADE, PLANTING SAUCERS RESTORED, AND DEFECTIVE WORK CORRECTED.

THE LANDSCAPE CONTRACTOR SHALL AT ALL TIMES KEEP THE PREMISES FREE FROM ACCUMULATION OF WASTE MATERIALS OR DEBRIS CAUSED BY HIS CREWS DURING THE PERFORMANCE OF THE WORK.

UPON COMPLETION OF THE WORK, THE CONTRACTOR SHALL PROMPTLY REMOVE ALL WASTE MATERIALS, DEBRIS, UNUSED PLANT MATERIAL, EMPTY PLANT CONTAINERS AND ALL EQUIPMENT FROM THE PROJECT SITE.

UPON COMPLETION OF THE WORK, THE LANDSCAPE CONTRACTOR SHALL NOTIFY THE LANDSCAPE ARCHITECT AND REQUEST A FINAL INSPECTION. ANY ITEMS THAT ARE JUDGED INCOMPLETE OR UNACCEPTABLE BY THE LANDSCAPE ARCHITECT OR OWNERS REPRESENTATIVE SHALL BE PROMPTLY CORRECTED BY THE LANDSCAPE CONTRACTOR.

THE LANDSCAPE CONTRACTOR SHALL GUARANTEE ALL PLANT MATERIAL FOR A PERIOD OF SIX (6) MONTHS FROM THE DATE OF CONDITIONAL ACCEPTANCE IN WRITING FROM THE LANDSCAPE ARCHITECT. AT THE TIME OF CONDITIONAL ACCEPTANCE, THE SIX (6) MONTH PERIOD SHALL COMMENCE. ANY MATERIAL WHICH HAS DIED DURING THIS PERIOD SHALL BE REPLACED WITH SPECIMENS THAT MEET THE MINIMUM REQUIREMENTS CALLED FOR ON THE DRAWINGS.

THE LANDSCAPE CONTRACTOR SHALL NOT BE HELD RESPONSIBLE FOR THE DEATH OR DAMAGE RESULTING FROM LIGHTNING, VANDALISM, AND AUTOMOBILES OR FROM NEGLIGENCE BY THE OWNER.

CONTRACTOR SHALL BE RESPONSIBLE FOR WATERING AND OTHERWISE MAINTAINING PLANTS UP TO THE CONDITIONAL ACCEPTANCE PERIOD, UNLESS A WRITTEN AGREEMENT WITH THE LANDSCAPE ARCHITECT PROVIDES FOR A DIFFERENT ARRANGEMENT.

ALL LABOR AND MATERIAL FOR SOIL AMENDMENTS AND FERTILIZER THAT IS REQUIRED TO INSURE THE SUCCESSFUL ESTABLISHMENT AND SURVIVAL OF THE PROPOSED VEGETATION, AS WELL AS ALL THE COST FOR THE REMOVAL OF UNSUITABLE OR EXCESS FERTILIZER MATERIAL, SHALL BE INCLUDED IN THE CONTRACTORS BID TO PERFORM THE WORK REPRESENTED IN THIS PLAN SET.

2. PLANTING TREES: EXCAVATE PIT AS PER PLANTING DETAILS. COMPACT LAYER OF TOPSOIL IN PIT WITH A SLIGHTLY DISHED GRADE TO CENTER.

BACKFILL AROUND BALL WITH TOPSOIL AND SLIGHTLY COMPACT. WATER THOROUGHLY AS LAYERS ARE PLACED TO ELIMINATE VOIDS AND AIR POCKETS. BUILD A 6" HIGH BERM OF TOPSOIL BEYOND EDGE OF EXCAVATION. APPLY 3" (AFTER SETTLEMENT) OF MULCH.

PRUNE TREE TO REMOVE DAMAGED BRANCHES. IMPROVE NATURAL SHAPE AND THIN OUT STRUCTURE. DO NOT REMOVE MORE THAN 15% OF BRANCHES. DO NOT PRUNE BACK TERMINAL LEADER.

GUY AND STAKE TREE IN ACCORDANCE WITH THE STAKING DETAILS IMMEDIATELY AFTER PLANTING.

3. PLANTING SHRUBS: LAYOUT SHRUBS TO CREATE A CONTINUOUS SMOOTH FRONT LINE AND FILL IN BEHIND.

EXCAVATE PIT OR TRENCH TO 2 TIMES THE DIAMETER OF THE BALLS OR CONTAINERS OR 1'-0" WIDER THAN THE SPREAD OF ROOTS AND 3" DEEPER THAN REQUIRED FOR POSITIONING AT PROPER HEIGHT.

COMPACT A LAYER OF TOPSOIL IN BOTTOM BEFORE PLACING PLANTS. BACKFILL AROUND PLANTS WITH PLANTING MIXTURE, COMPACTED TO ELIMINATE VOIDS AND AIR POCKETS. FORM GRADE SLIGHTLY DISHED AND BERMED AT EDGES OF EXCAVATION. APPLY 3" OF MULCH.

PRUNE SHRUBS TO REMOVE DAMAGED BRANCHES. IMPROVE NATURAL SHAPE AND THIN OUT STRUCTURE. DO NOT REMOVE MORE THAN 15% OF BRANCHES.

4. PLANTING GROUND COVER: LOOSEN SUBGRADE TO DEPTH OF 4" IN AREAS WHERE TOPSOIL HAS BEEN STRIPPED AND SPREAD SMOOTH.

SPACE PLANTS AS OTHERWISE INDICATED. DIG HOLES LARGE ENOUGH TO ALLOW SPREADING OF ROOTS. COMPACT BACKFILL TO ELIMINATE VOIDS AND LEAVE GRADE SLIGHTLY DISHED AT EACH PLANT. WATER THOROUGHLY. APPLY 3" OF MULCH OVER ENTIRE PLANTING BED. LIFTING PLANT FOLIAGE ABOVE MULCH. PURPLE QUEEN GROUNDCOVERS, IF SPECIFIED, SHALL ONLY RECEIVE 1" OF MULCH.

DURING PERIODS OF HOT SUN AND/OR WIND AT TIME OF PLANTING, PROVIDE PROTECTIVE COVER FOR SEVERAL DAYS OR AS NEEDED.

5. PLANTING LAWNS: SOODING: SOD TYPE SPECIFIED ON PLANT LIST SHALL BE MACHINE STRIPPED NOT MORE THAN 24 HOURS PRIOR TO LAYING.

LOOSEN SUBGRADE TO DEPTH OF 4" AND GRADE WITH TOPSOIL EITHER PROVIDED ON SITE OR IMPORTED TO FINISH DESIGN ELEVATIONS. ROLL PREPARED LAWN SURFACE. WATER THOROUGHLY, BUT DO NOT CREATE MUDDY SOIL CONDITION.

FERTILIZE SOIL AT THE RATE OF APPROXIMATELY 10 LBS. PER 1,000 S.F. SPREAD FERTILIZER OVER THE AREA TO RECEIVE GRASS BY USING AN APPROVED DISTRIBUTION DEVICE CALIBRATED TO DISTRIBUTE THE APPROPRIATE QUANTITY. DO NOT FERTILIZE WHEN WIND VELOCITY EXCEEDS 15 M.P.H. THOROUGHLY MIX FERTILIZER INTO THE TOP 2" OF TOPSOIL.

LAY SOD STRIPS WITH TIGHT JOINTS. DO NOT OVERLAP. STAGGER STRIPS TO OFFSET JOINTS IN ADJACENT COURSES. WORK SIFTED SOIL MIX INTO MINOR CRACKS BETWEEN PIECES OF SOD AND REMOVE EXCESS SOIL DEPOSIT FROM SOBER AREAS. SOD ON SLOPES GREATER THAN 3:1 SHALL BE STAKED IN PLACE. ROLL OR STAMP LIGHTLY AND WATER THOROUGHLY WITH A FINE SPRAY IMMEDIATELY AFTER PLANTING.

6. MISCELLANEOUS LANDSCAPE WORK

LANDSCAPE MAINTENANCE: MAINTAIN LANDSCAPE WORK UNTIL FINAL ACCEPTANCE IS ISSUED BY THE OWNER'S REPRESENTATIVE.

INCLUDE WEEDING, WEEDING, CULTIVATING, RESTORING OF GRASS, MOWING AND TRIMMING GRASS, PRUNING TREES AND SHRUBS, PROTECTING FROM INSECTS AND DISEASES, FERTILIZING AND SIMILAR OPERATIONS AS NEEDED TO INSURE NORMAL GROWTH AND GOOD HEALTH FOR LIVE PLANT MATERIAL.

PLANT MATERIAL SUBSTITUTION: NO SUBSTITUTION OF PLANT MATERIAL, TYPE OR SIZES WILL BE PERMITTED WITHOUT AUTHORIZATION FROM THE LANDSCAPE ARCHITECT.

PLANTING BED PREPARATION: ALL PLANTING BEDS SHALL BE PROPERLY PREPARED PRIOR TO THE COMMENCEMENT OF ANY PLANTING.

PLANTING AREAS, INCLUDING LAWNS SHALL BE FREE OF ALL WEEDS AND NUISANCE VEGETATION. IF TORPEDO GRASS (PANSY) IS PRESENT OR INDICATED BY THE LANDSCAPE CONTRACTOR SHALL STOP ALL PLANTING UNTIL IT CAN BE DEMONSTRATED THAT IT HAS BEEN COMPLETELY REMOVED OR ERADICATED. THERE SHALL BE NO EXCEPTIONS TO THIS PROVISION.

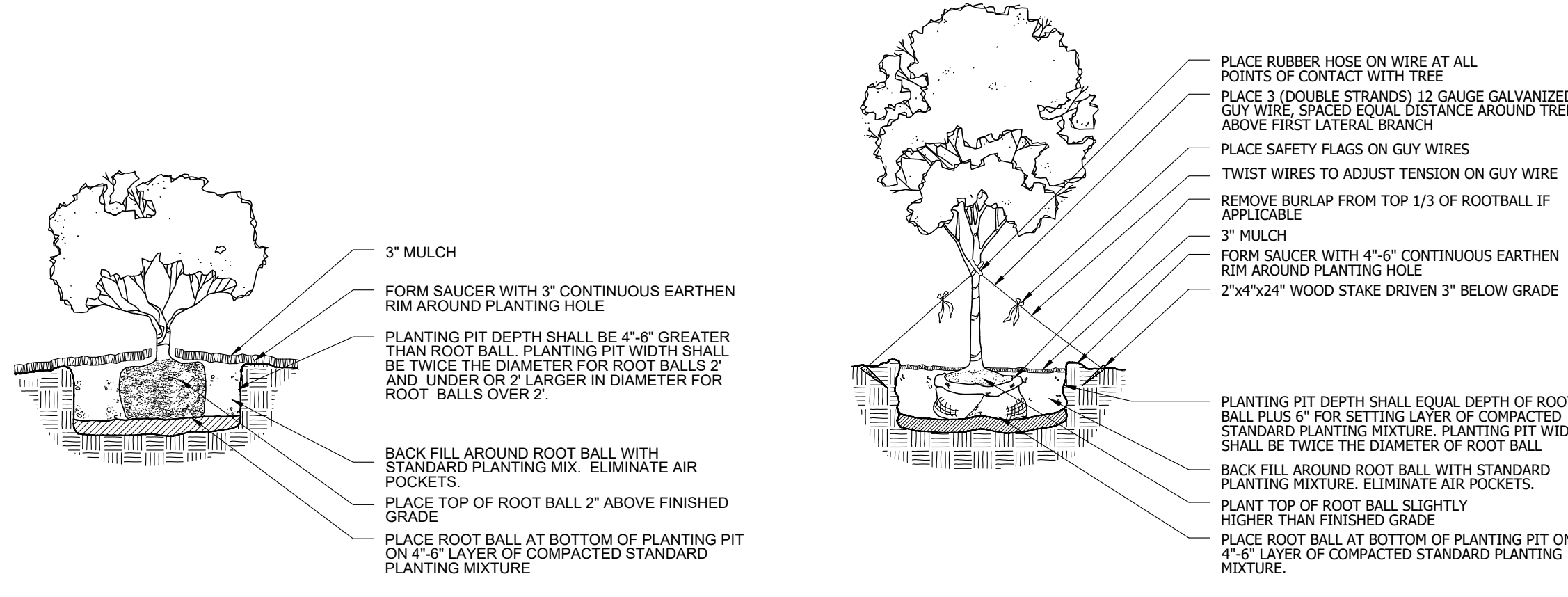
ALL LANDSCAPE ISLANDS AND BEDS WILL BE FREE OF SHELL ROCK AND CONSTRUCTION DEBRIS AND FILLED TO A DEPTH OF 30 INCHES OR TO SLOPE, NATIVE SOIL AND FILLED WITH THE SPECIFIED BACKFILL MIXTURE.

ALL TREE STAKING MATERIALS SHALL BE LOCATED WITHIN MULCH BEDS AND OR RINGS.

ALL AREAS SHALL BE FULLY IRRIGATED IN ACCORDANCE WITH THE REQUIREMENTS OF THE CITY OF PORT ST. LUCIE. IRRIGATION SHOP DRAWINGS SHALL BE SUBMITTED TO THE OWNER AND LANDSCAPE ARCHITECT FOR APPROVAL PRIOR TO CONSTRUCTION. THE IRRIGATION SYSTEM SHALL BE DESIGNED TO PROVIDE 100% OVERLAP COVERAGE TO ALL LANDSCAPE AND SOD AREAS.

THE IRRIGATION WATER SOURCE SHALL BE WELL WATER OR SUCTON FROM AN ONSITE STORMWATER MANAGEMENT AREA. THE IRRIGATION SYSTEM SHALL BE EQUIPPED WITH A RAIN SENSOR/CUT OFF SWITCH IN ACCORDANCE WITH STATE AND LOCAL REQUIREMENTS.

PLANTING DETAILS

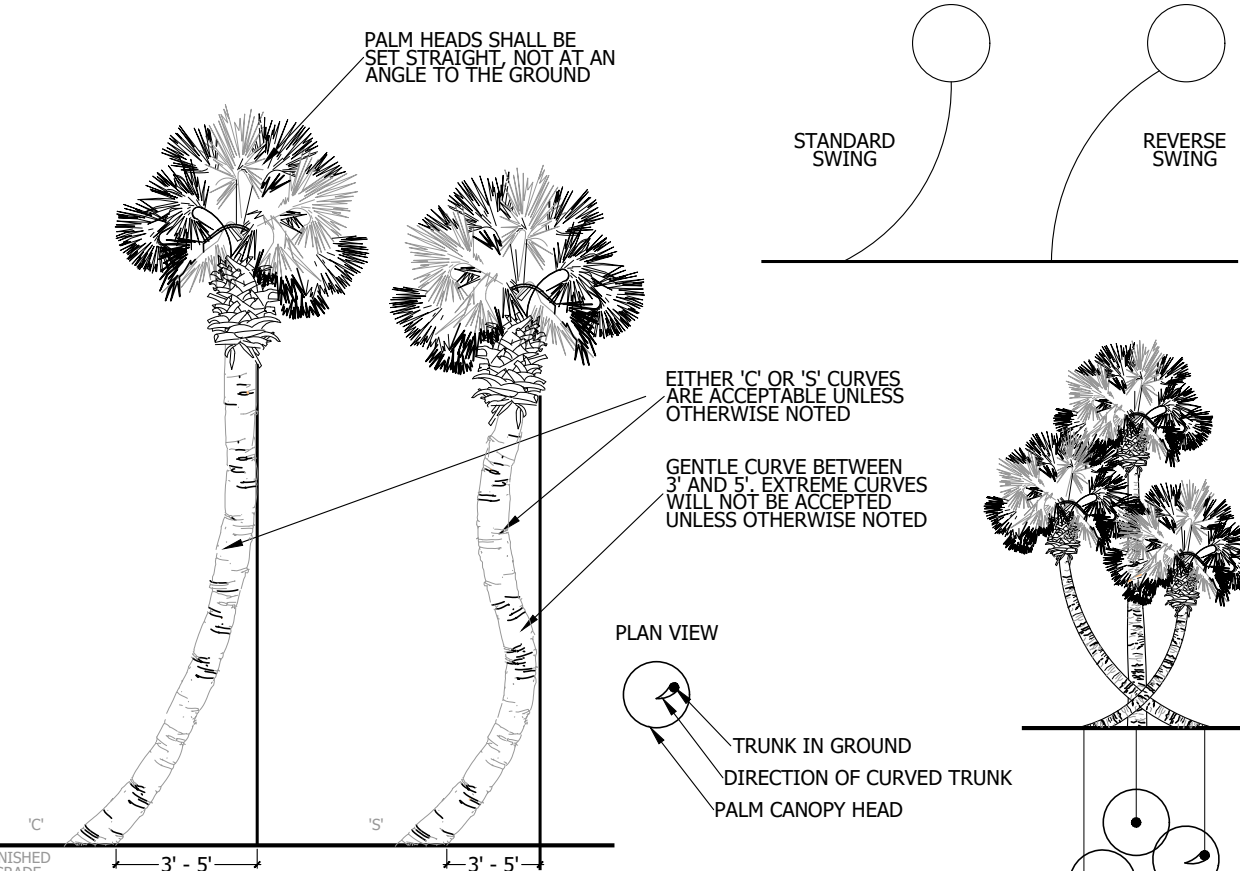


SHRUB/GROUNDCOVER PLANTING DETAIL

LARGE TREE PLANTING DETAIL

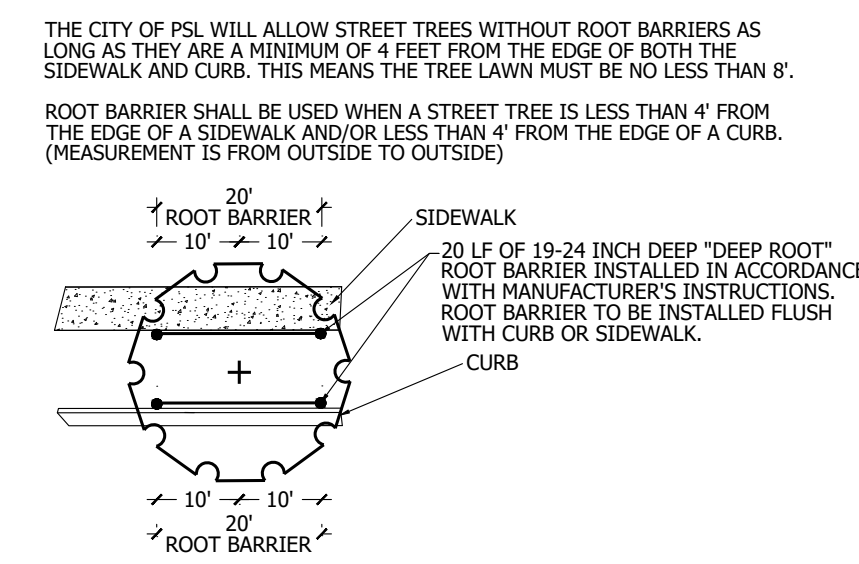
N.T.S.

N.T.S.



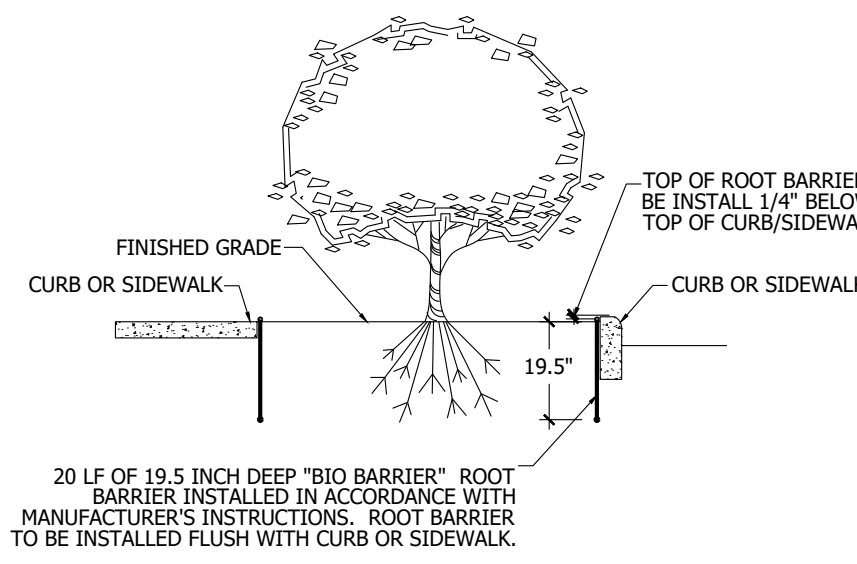
CURVED PALM TRUNK DETAIL

N.T.S.



ROOT BARRIER DETAIL

N.T.S.



ROOT BARRIER DETAIL

N.T.S.

LANDSCAPE NOTES

ALL LANDSCAPING AND SITE IMPROVEMENTS SHALL CONFORM TO ALL APPLICABLE PROVISIONS OF THE CITY OF PORT ST. LUCIE CHAPTER 153, LANDSCAPE AND LAND CLEARING CODE, CURRENT ADDITION AND ANY OTHER APPLICABLE CITY REGULATIONS.

THE LANDSCAPE CONTRACTOR SHALL NOT MAKE ANY SUBSTITUTIONS OR CHANGES WITHOUT THE AUTHORIZATION OF THE OWNER AND THE LANDSCAPE ARCHITECT.

THE LANDSCAPE CONTRACTOR SHALL REVIEW THE PROJECT DRAINAGE PLANS AND VERIFY THE LOCATION OF ALL UNDERGROUND UTILITIES PRIOR TO CONSTRUCTION AND AVOID ALL CONFLICTS.

THE LANDSCAPE CONTRACTOR IS RESPONSIBLE FOR ALL PERMITS RELATING TO HISHER WORK.

TREES AT ENTRANCEWAYS SHALL BE LIMBED UP TO MAXIMIZE SITE DISTANCE. CLEAR VISIBILITY SHALL BE MAINTAINED BETWEEN 24" AND 8'. TREES SHALL BE POSITIONED TO AVOID CONFLICTS WITH SITE LIGHTING.

ALL LANDSCAPING SHALL BE LOCATED IN THE RIGHT-OF-WAY AND ON PRIVATE PROPERTY SO THAT NO CONFLICT OCCURS WITH DESIGNATED CITY DRAINAGE AND /OR UTILITY EASEMENTS, OVERHEAD AND UNDERGROUND UTILITY LINES AND OR UTILITY STRUCTURES. NO TREE ARE ALLOWED IN UTILITY EASEMENTS OR CLOSER THAN TEN FEET TO ANY CITY UTILITY LINES.

TREES AT ENTRANCEWAYS SHALL BE LIMBED UP TO MAXIMIZE SITE DISTANCE. CLEAR VISIBILITY SHALL BE MAINTAINED BETWEEN 24" AND 8'. TREES SHALL BE POSITIONED TO AVOID CONFLICTS WITH SITE LIGHTING.

PLANTING ISLANDS WITHIN AND ADJACENT TO PARKING AREAS SHALL BE FREE OF LIME ROCK AND OTHER FOREIGN MATERIALS TO A DEPTH OF 30". IF NECESSARY, RECYCLED PLANTING SOIL MIXTURE SHOULD BE USED TO REPLACE UNSUITABLE SOIL, WHICH IS EXCAVATED.

THE SURFACE OF ALL AREAS TO RECEIVE LANDSCAPING WILL BE FINELY GRADED AND SET TO SLOPES AND DEPRESSIONS ARE REMOVED AND POSITIVE DRAINAGE IS ACHIEVED. THE FINISHED GRADE OF SOD AND MULCH AREAS SHALL BE SET SO THAT MULCH WASTES DO NOT OCCUR AND THERE IS A SMOOTH TRANSITION FROM PAVED SURFACES TO ADJACENT LAWN AREAS.

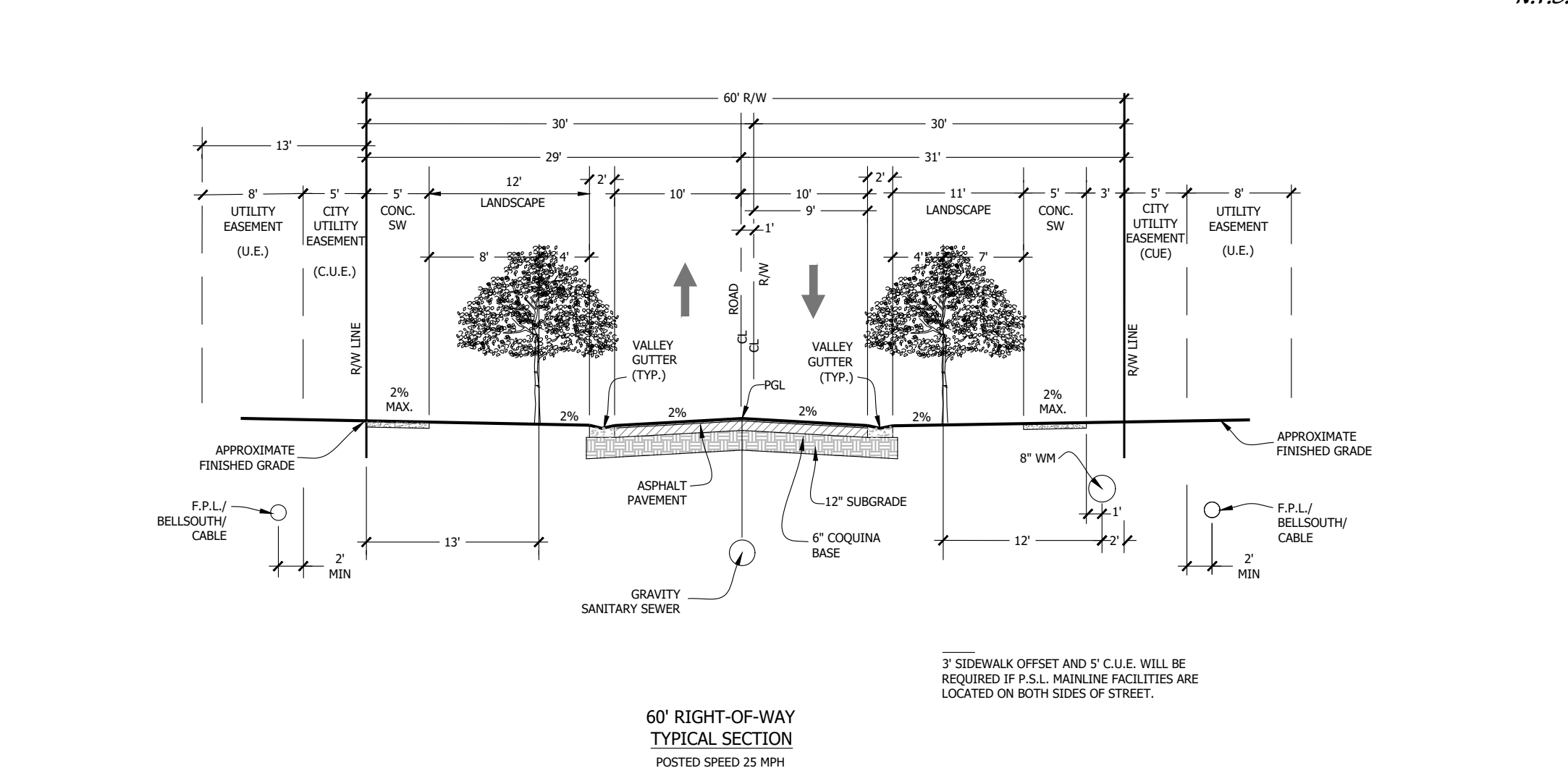
ALL TREES, SHRUBS AND GROUNDCOVER BEDS ARE REQUIRED TO BE MULCHED WITH A 3" MIN. THICK LAYER OF MULCH. TREES LOCATED IN TURF AREAS ARE REQUIRED TO HAVE A 3" THICK MULCHED WATERING RING PROVIDED AROUND THE TRUNK. THE TREE RING IS REQUIRED TO BE A MINIMUM DIAMETER OF 3' AROUND SMALL TREES AND 5' AROUND LARGE TREES. TO FACILITATE MOWING, MULCH SHALL BE KEPT THREE FEET AWAY FROM THE TRUNK.

ALL TREE STAKING MATERIALS SHALL BE LOCATED WITHIN MULCH BEDS AND OR RINGS.

ALL AREAS SHALL BE FULLY IRRIGATED IN ACCORDANCE WITH THE REQUIREMENTS OF THE CITY OF PORT ST. LUCIE. IRRIGATION SHOP DRAWINGS SHALL BE SUBMITTED TO THE OWNER AND LANDSCAPE ARCHITECT FOR APPROVAL PRIOR TO CONSTRUCTION. THE IRRIGATION SYSTEM SHALL BE DESIGNED TO PROVIDE 100% OVERLAP COVERAGE TO ALL LANDSCAPE AND SOD AREAS.

THE IRRIGATION WATER SOURCE SHALL BE WELL WATER OR SUCTON FROM AN ONSITE STORMWATER MANAGEMENT AREA. THE IRRIGATION SYSTEM SHALL BE EQUIPPED WITH A RAIN SENSOR/CUT OFF SWITCH IN ACCORDANCE WITH STATE AND LOCAL REQUIREMENTS.

TYPICAL 60' RIGHT-OF-WAY SECTION



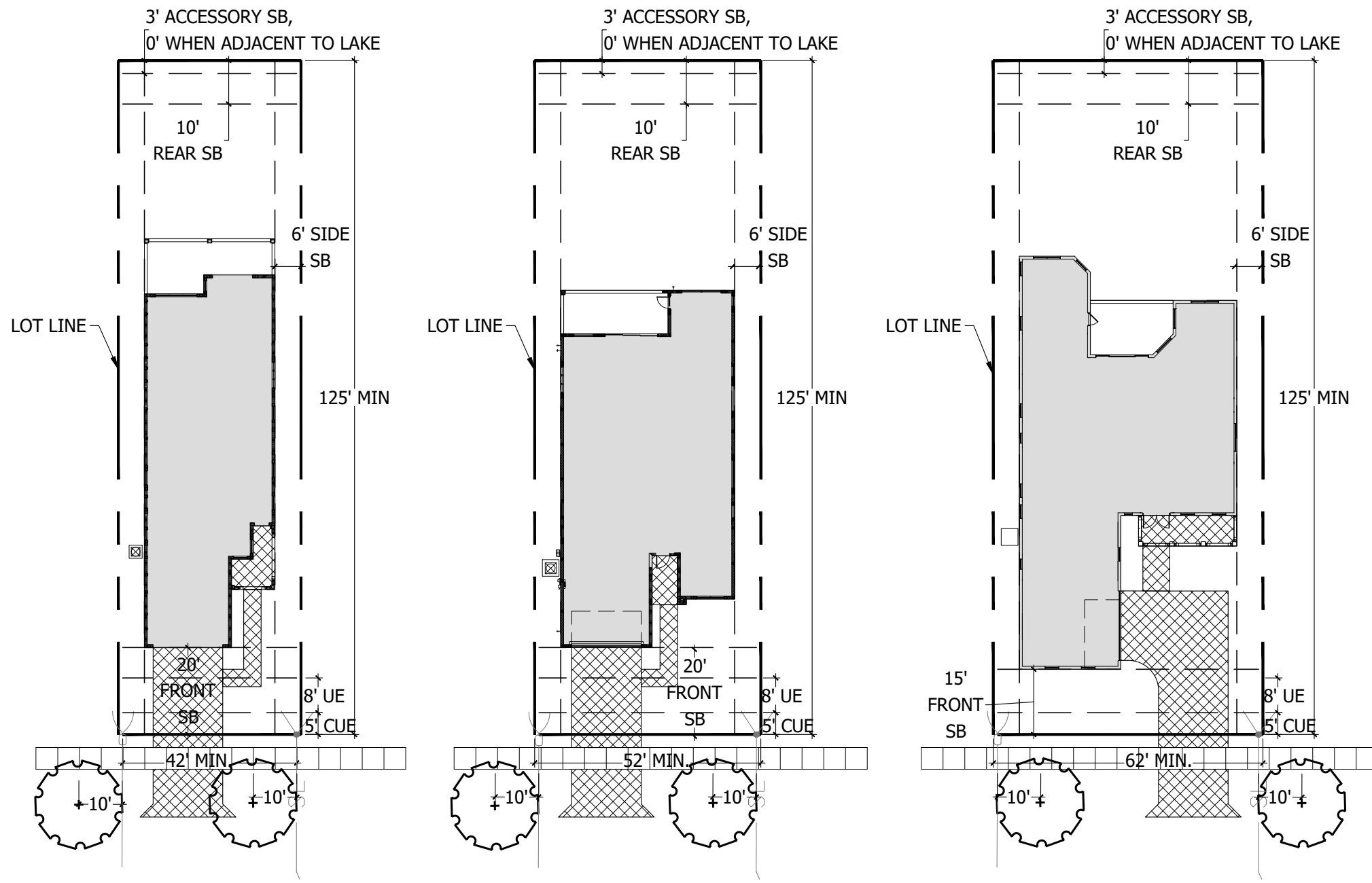
60' RIGHT-OF-WAY TYPICAL SECTION POSTED SPEED 25 MPH

*SIDEWALK OFFSET AND 5' C.U.I.E. WILL BE REQUIRED IF P.S.I. MAINLINE FACILITIES ARE LOCATED ON BOTH SIDES OF STREET.

PLANT SCHEDULE

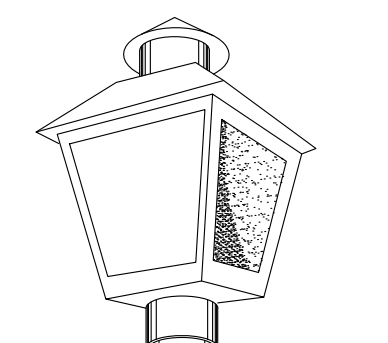
Table with columns: TREES, QTY, BOTANICAL NAME, COMMON NAME, CONT, CAL, SIZE, NATIVE, REMARKS. Includes species like Japanese Blueberry Tree, Southern Live Oak, etc.

TYPICAL DRIVEWAY CONFIGURATION



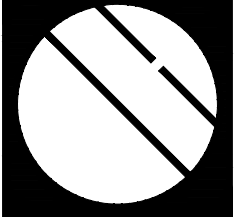
COACH LAMP (STREETLIGHTS)

N.T.S.



F.P.L. TRADITIONAL POST TOP FIXTURE G.E. TC-100R LUMINARY WITH HIGH PRESSURE SODIUM LAMP ROUND, FIBERGLASS POLE, 12' HEIGHT (BURY 5' IN DEPTH).

GENERAL LANDSCAPE NOTES: NO TREE OR OTHER INTRUSIVE ROOT PLANTINGS SHALL BE LOCATED WITHIN 10' OF A CITY UTILITY MAIN. NO OTHER UTILITIES SHALL BE A MINIMUM OF 5' HORIZONTAL SEPARATION FROM CITY UTILITY MAINS FOR PARALLEL INSTALLATIONS AND A MINIMUM OF 18" BELOW CITY UTILITY MAINS. NO LANDSCAPING SHALL BE PLACED IN A MANNER THAT WOULD CREATE CONFLICTS WITH THE INTENDED OPERATION AND MAINTENANCE OF ANY EXISTING OR PROPOSED WATER/WASTEWATER UTILITY LINES. ST. AUGUSTINE SOD WILL BE UTILIZED FOR ALL TURF AREAS, EXCEPT AS NOTED. BAHIA SOD WILL BE UTILIZED IN DRY RETENTION AREAS AND IN AREAS OF EXISTING TREES TO REMAIN. ALL TREES PLANTED UNDER OR ADJACENT TO F.P.B.L. POWERLINES WILL COMPLY WITH THE F.P.B.L. 'RIGHT TREE, RIGHT PLACE' GUIDELINES.



Cotleur & Hearing

Landscape Architects Land Planners Environmental Consultants

1934 Commerce Lane Suite 1 Jupiter, Florida 33458

561.747.6336 • Fax 747.1377

www.cotleurhearing.com

Lic# LC-C000239

VERANO SOUTH POD B 3 Kolter Homes Port St. Lucie, Florida

Table with 2 columns: DESIGNED, DRAWN, DATE, REVISIONS and corresponding values.

PSLUSD PROJ# 11-652-310 PSL PROJ# P20-134 POD B P&F PLAT 3 Landscape Details

October 16, 2020 2:53.3 p.m.

Drawing: 17-0202_PLAT_3_09-21-20.DWG

SHEET 4 OF 4

© COTLEUR & HEARING, INC. These drawings are the property of the architect and are not to be used for any other project except by agreement in writing with the architect. Immediately report any discrepancies to the architect.