

Project Team:

mattamyHOMES

Client & Property Owner: Mattamy Homes, LLC
 1500 Gateway Blvd, Suite 220
 Boynton Beach, Florida 33426

Land Planner / Landscape Architect: Lucido & Associates
 701 East Ocean Boulevard
 Stuart, Florida 34994

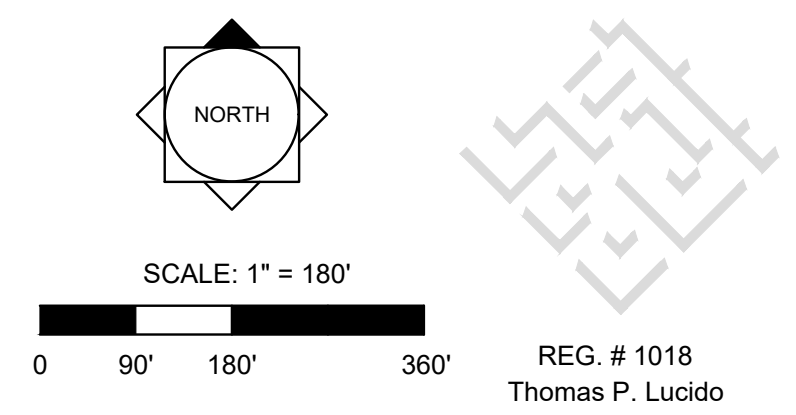
Engineer: Kimley Horn
 445 24th Street, Suite 200
 Vero Beach, Florida 32960

Surveyor: Caulfield & Wheeler, Inc.
 410 S.E. Port St. Lucie Blvd
 Port St. Lucie, Florida 34984

Mattamy Homes
 Tradition Parkway Extension
 Port St. Lucie, FL
 Median and Street Tree Landscaping

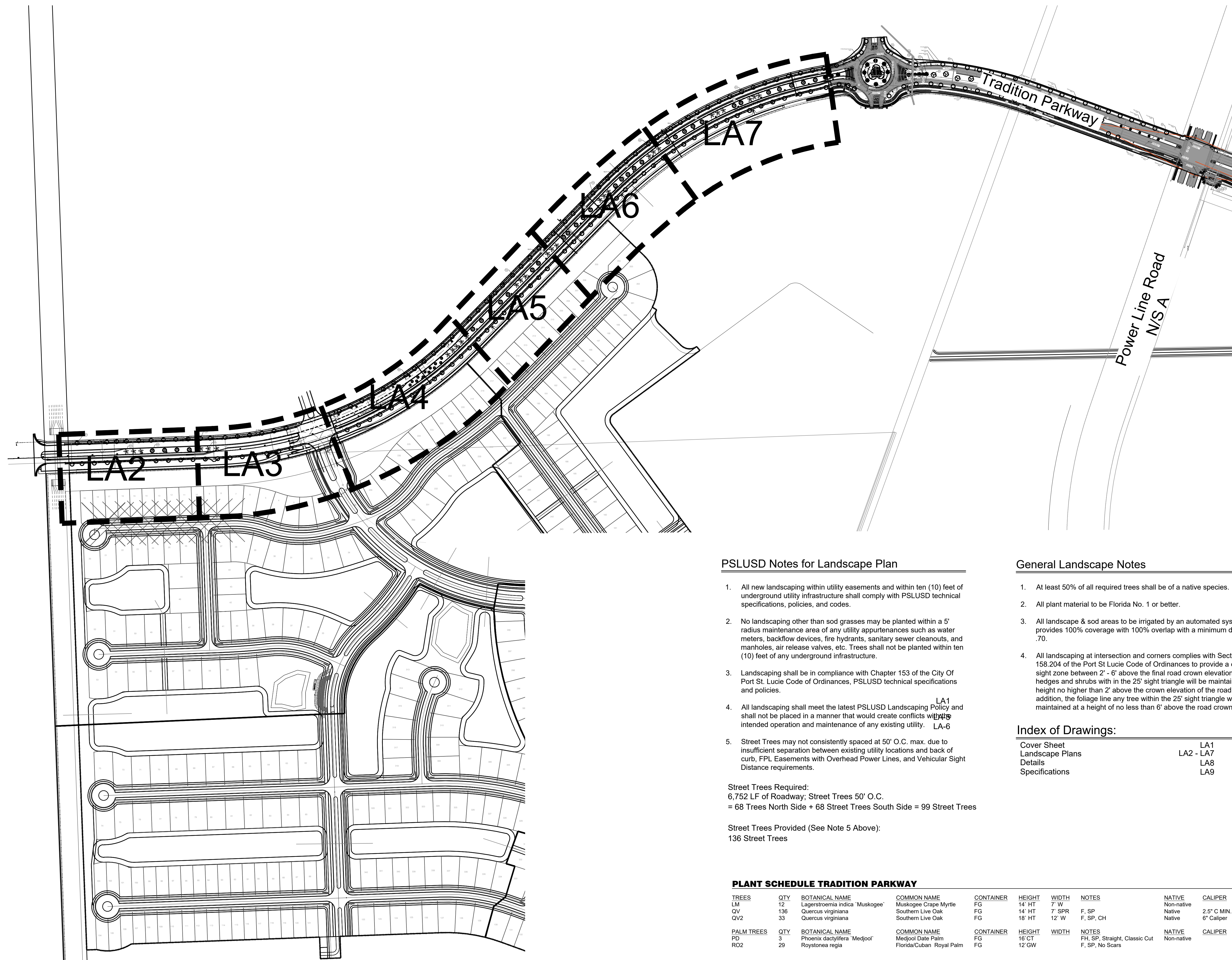
City of Port St. Lucie P#: P22-156
 PSLUSD # 5395B

Date	By	Description
04.20.22	SAW	Submittal
08.08.22	SAW	Resubmittal
09.23.22	SAW	Resubmittal
04.21.23	SAW	Resubmittal
08.14.23	SAW	Resubmittal
02.13.24	SAW	Resubmittal-update utilities
05.16.24	SAW	Resubmittal



REG. # 1018
 Thomas P. Lucido

Designer PG Sheet
 Manager SG
 Project Number 20-276.16
 Municipal Number P22-156, 5395B
 Computer File WG-6-Tradition Pkwy Landscape.dwg



PSLUSD Notes for Landscape Plan

- All new landscaping within utility easements and within ten (10) feet of underground utility infrastructure shall comply with PSLUSD technical specifications, policies, and codes.
- No landscaping other than sod grasses may be planted within a 5' radius maintenance area of any utility appurtenances such as water meters, backflow devices, fire hydrants, sanitary sewer cleanouts, and manholes, air release valves, etc. Trees shall not be planted within ten (10) feet of any underground infrastructure.
- Landscaping shall be in compliance with Chapter 153 of the City Of Port St. Lucie Code of Ordinances, PSLUSD technical specifications and policies.
- All landscaping shall meet the latest PSLUSD Landscaping Policy and shall not be placed in a manner that would create conflicts with the intended operation and maintenance of any existing utility. LA-1 LA-6
- Street Trees may not consistently spaced at 50' O.C. max. due to insufficient separation between existing utility locations and back of curb, FPL Easements with Overhead Power Lines, and Vehicular Sight Distance requirements.

Street Trees Required:
 6,752 LF of Roadway; Street Trees 50' O.C.
 = 68 Trees North Side + 68 Street Trees South Side = 99 Street Trees

Street Trees Provided (See Note 5 Above):
 136 Street Trees

General Landscape Notes

- At least 50% of all required trees shall be of a native species.
- All plant material to be Florida No. 1 or better.
- All landscape & sod areas to be irrigated by an automated system that provides 100% coverage with 100% overlap with a minimum d.u. of .70.
- All landscaping at intersection and corners complies with Section 158.204 of the Port St. Lucie Code of Ordinances to provide a clear sight zone between 2' - 6' above the final road crown elevation. All hedges and shrubs with in the 25' sight triangle will be maintained at a height no higher than 2' above the crown elevation of the road. In addition, the foliage line any tree within the 25' sight triangle will maintained at a height of no less than 6' above the road crown.

Index of Drawings:

Cover Sheet	LA1
Landscape Plans	LA2 - LA7
Details	LA8
Specifications	LA9

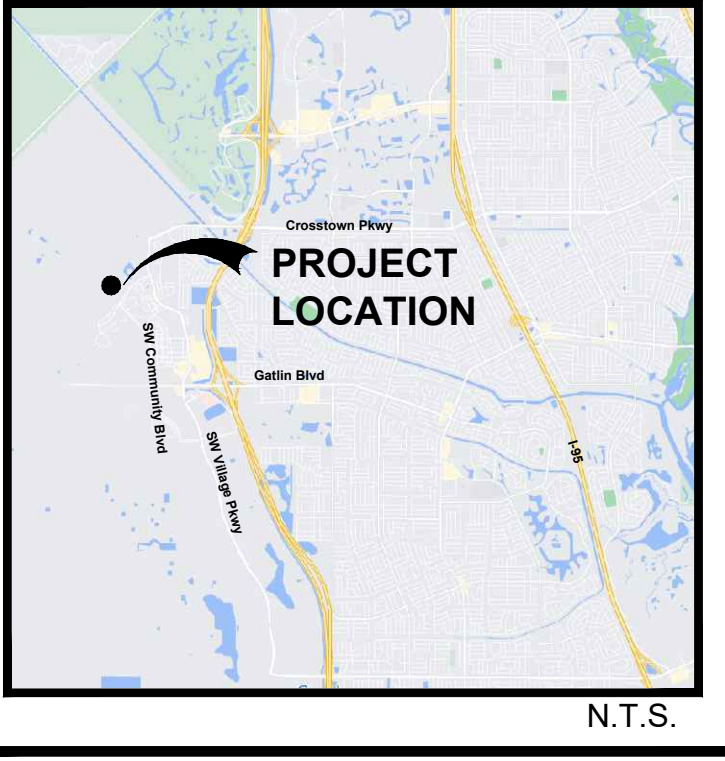
PLANT SCHEDULE TRADITION PARKWAY

TREES	QTY	BOTANICAL NAME	COMMON NAME	CONTAINER	HEIGHT	WIDTH	NOTES	NATIVE	CALIPER
LM	12	Lagerstroemia indica 'Muskogee'	Muskogee Crape Myrtle	FG	14' HT	7' W		Non-native	
QV	136	Quercus virginiana	Southern Live Oak	FG	14' HT	7' SPR	F, SP	Native	2.5" C MIN.
QV2	33	Quercus virginiana	Southern Live Oak	FG	18' HT	12' W	F, SP, CH	Native	6" Caliper
PALM TREES	QTY	BOTANICAL NAME	COMMON NAME	CONTAINER	HEIGHT	WIDTH	NOTES	NATIVE	CALIPER
PD	3	Phoenix dactylifera 'Medjool'	Medjool Date Palm	FG	16' CT		FH, SP, Straight, Classic Cut	Non-native	
RO2	29	Roystonea regia	Florida/Cuban Royal Palm	FG	12' GW		F, SP, No Scars		

Drawing Name: C:\Users\swatf\AppData\Local\Temp\AcPublish\Local\Temp\AcPublish_15616\Jun 07, 2024 - 9:39am WG-6-Tradition Pkwy Landscape.dwg

Match Line See Sheet 2

Key / Location:



Project Team:



Client & Property Owner: Mattamy Homes, LLC
 1500 Gateway Blvd, Suite 220
 Boynton Beach, Florida 33426

Land Planner / Landscape Architect: Lucido & Associates
 701 East Ocean Boulevard
 Stuart, Florida 34994

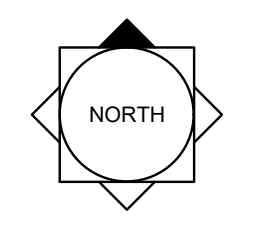
Engineer: Kimley Horn
 445 24th Street, Suite 200
 Vero Beach, Florida 32960

Surveyor: Caulfield & Wheeler, Inc.
 410 S.E. Port St. Lucie Blvd
 Port St. Lucie, Florida 34984

Mattamy Homes
 Tradition Parkway
 Extension
 Port St. Lucie, FL
 Median and Street
 Tree Landscaping

City of Port St. Lucie P#: P22-156
 PSLUSD # 5395B

Date	By	Description
04.20.22	SAW	Submittal
08.08.22	SAW	Resubmittal
09.23.22	SAW	Resubmittal
04.21.23	SAW	Resubmittal
05.16.24	SAW	Resubmittal



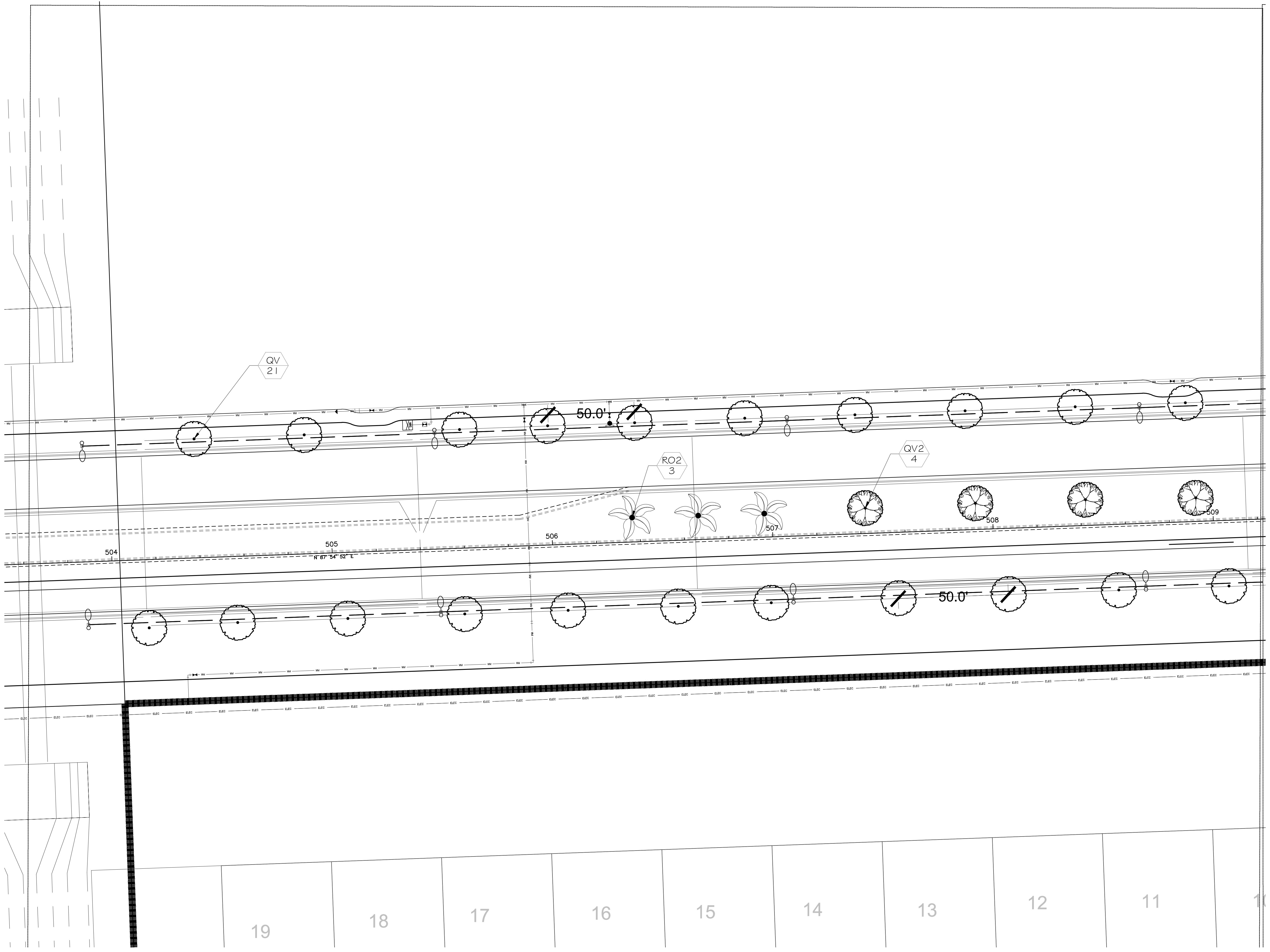
SCALE: 1" = 20'
 0 10' 20' 40'



REG. # 1018
 Thomas P. Lucido

Designer SJS Sheet
 Manager SG
 Project Number 20-276.20 **LA2**
 Municipal Number P22-156, 5395B
 Computer File WG-6-Tradition Pkwy Landscape.dwg

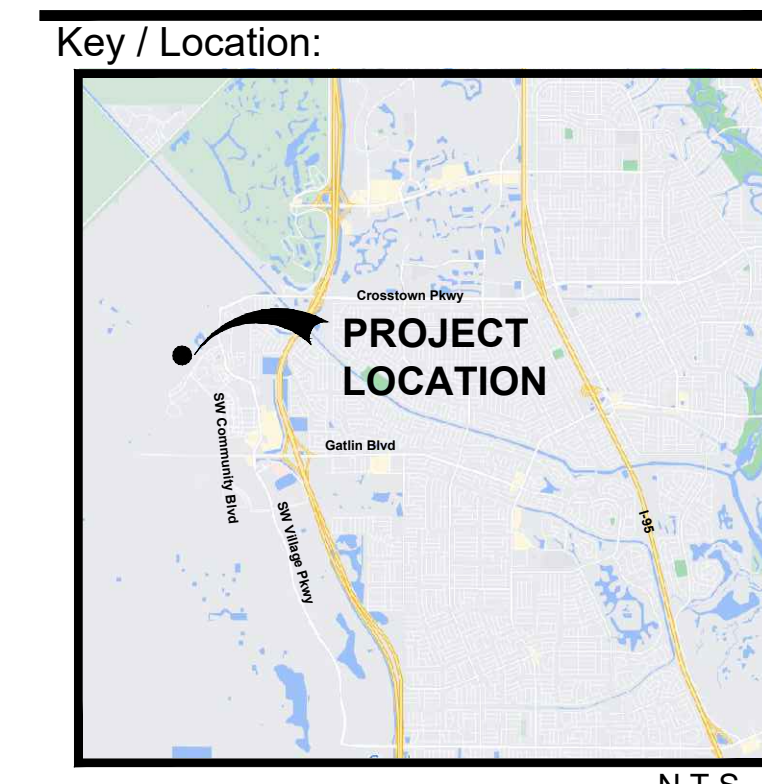
© Copyright Lucido & Associates. These documents and their contents are the property of Lucido & Associates. Any reproductions, revisions, modifications or use of these documents without the express written consent of Lucido & Associates is prohibited by law.



Drawing Name: C:\Users\swatf\AppData\Local\Temp\AcPublish_15616\ Jun 07, 2024 - 9:39am WG-6-Tradition Pkwy Landscape.dwg

19 18 17 16 15 14 13 12 11

Match Line See Sheet 2



Project Team:



Client & Property Owner: Mattamy Homes, LLC
 1500 Gateway Blvd, Suite 220
 Boynton Beach, Florida 33426

Land Planner / Landscape Architect: Lucido & Associates
 701 East Ocean Boulevard
 Stuart, Florida 34994

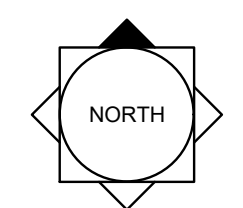
Engineer: Kimley Horn
 445 24th Street, Suite 200
 Vero Beach, Florida 32960

Surveyor: Caulfield & Wheeler, Inc.
 410 S.E. Port St. Lucie Blvd
 Port St. Lucie, Florida 34984

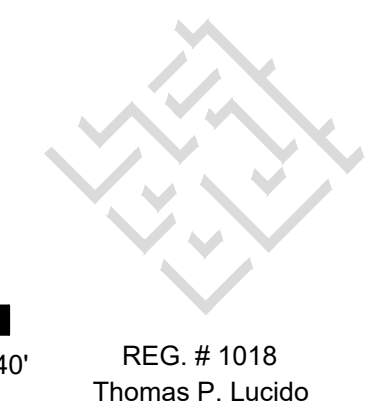
Mattamy Homes
 Tradition Parkway
 Extension
 Port St. Lucie, FL
 Median and Street
 Tree Landscaping

City of Port St. Lucie P#: P22-156
 PSLUSD # 5395B

Date	By	Description
04.20.22	SAW	Submittal
08.08.22	SAW	Resubmittal
09.23.22	SAW	Resubmittal
04.21.23	SAW	Resubmittal
05.16.24	SAW	Resubmittal

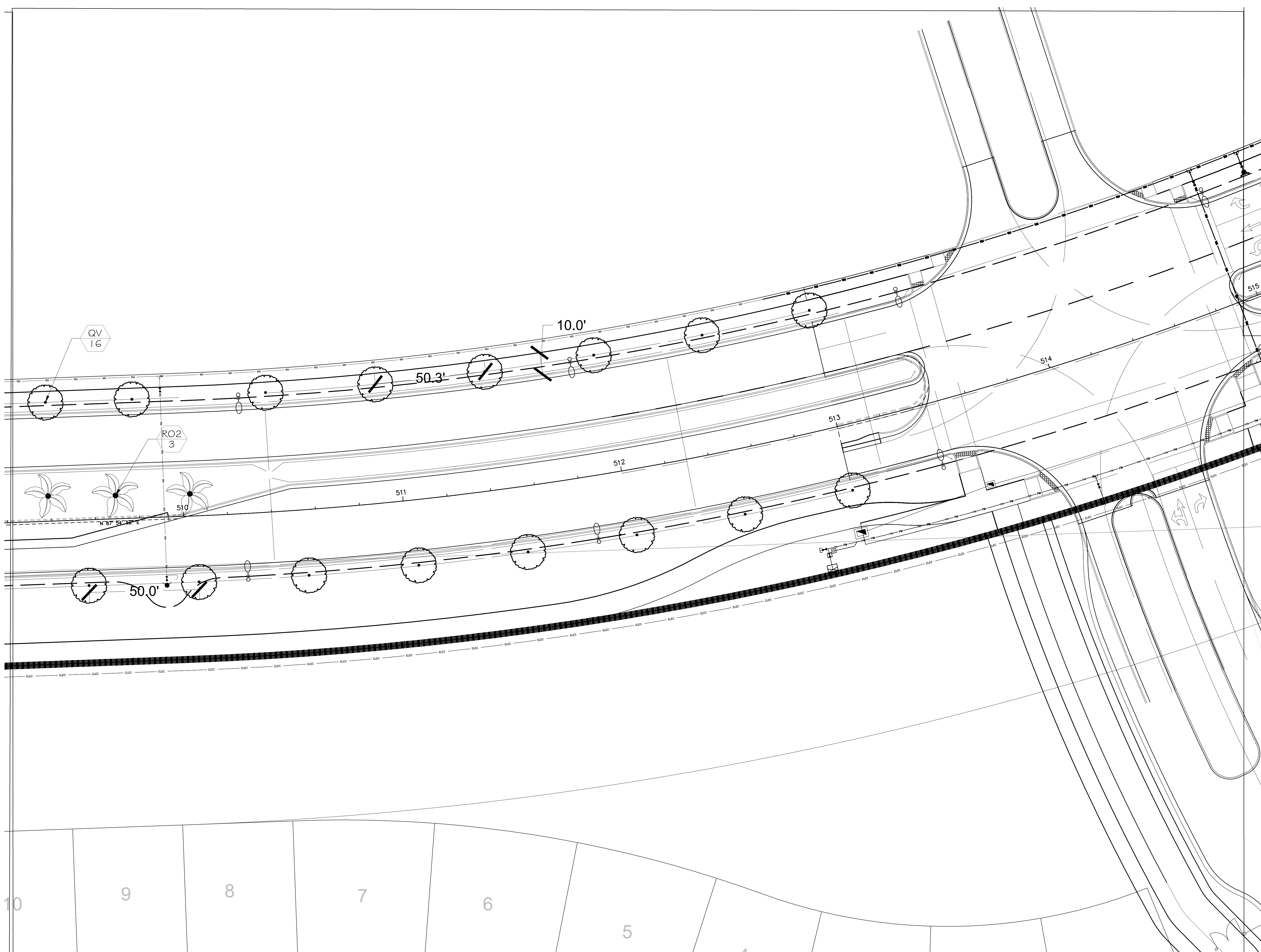


SCALE: 1" = 20'



Designer: SJS Sheet
 Manager: SG
 Project Number: 20-276.20 **LA3**
 Municipal Number: P22-156, 5395B
 Computer File: WG-6-Tradition Pkwy Landscape.dwg

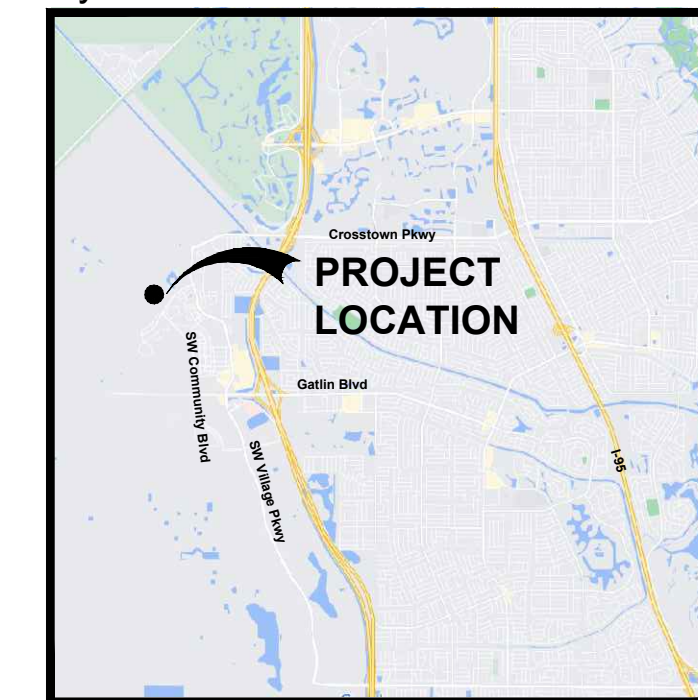
© Copyright Lucido & Associates. These documents and their contents are the property of Lucido & Associates. Any reproductions, revisions, modifications or use of these documents without the express written consent of Lucido & Associates is prohibited by law.



Drawing Name: C:\Users\swolf\AppData\Local\Temp\AcPublish_15616\ Jun 07, 2024 - 9:39am WG-6-Tradition Pkwy Landscape.dwg

Match Line See Sheet 2

Key / Location:



Project Team:



Client & Property Owner: Mattamy Homes, LLC
 1500 Gateway Blvd, Suite 220
 Boynton Beach, Florida 33426

Land Planner / Landscape Architect: Lucido & Associates
 701 East Ocean Boulevard
 Stuart, Florida 34994

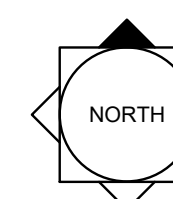
Engineer: Kimley Horn
 445 24th Street, Suite 200
 Vero Beach, Florida 32960

Surveyor: Caulfield & Wheeler, Inc.
 410 S.E. Port St. Lucie Blvd
 Port St. Lucie, Florida 34984

Mattamy Homes
 Tradition Parkway
 Extension
 Port St. Lucie, FL
 Median and Street
 Tree Landscaping

City of Port St. Lucie P#: P22-156
 PSLUSD # 5395B

Date	By	Description
04.20.22	SAW	Submittal
08.08.22	SAW	Resubmittal
09.23.22	SAW	Resubmittal
04.21.23	SAW	Resubmittal
05.16.24	SAW	Resubmittal



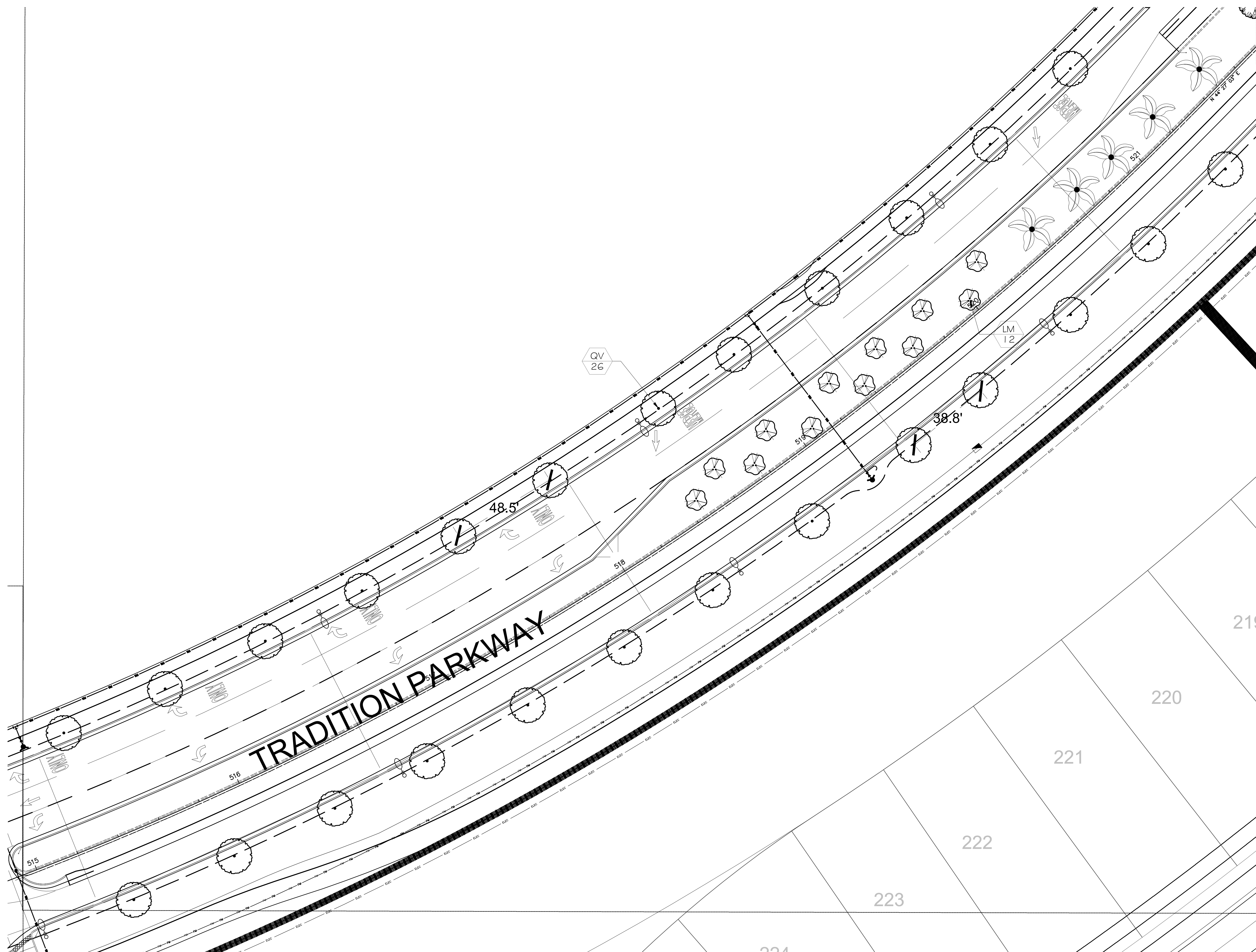
SCALE: 1" = 20'



REG. # 1018
 Thomas P. Lucido

Designer: SJS
Manager: SG
Project Number: 20-276.20
Municipal Number: P22-156, 5395B
Computer File: WG-6-Tradition Pkwy Landscape.dwg

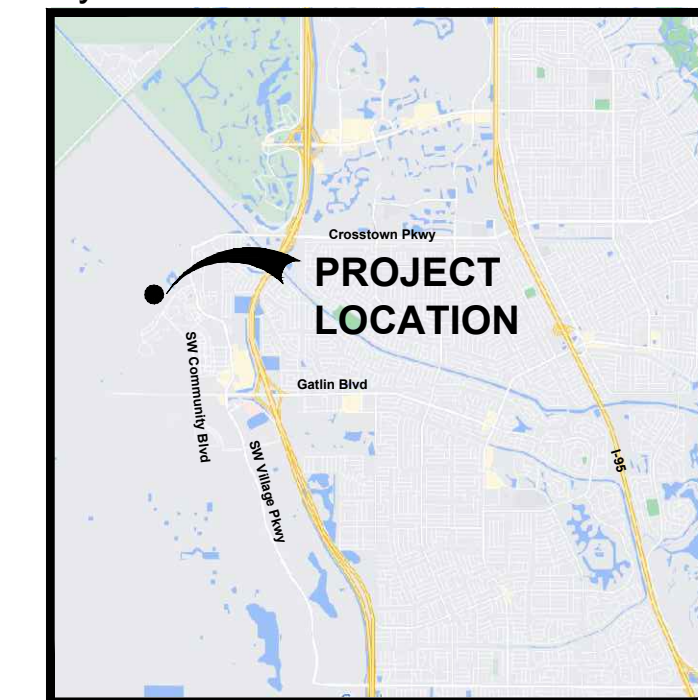
LA4



Drawing Name: C:\Users\swolf\AppData\Local\Temp\AcPublish_15616\ Jun 07, 2024 - 9:39am WG-6-Tradition Pkwy Landscape.dwg

Match Line See Sheet 2

Key / Location:



Project Team:



Client & Property Owner: Mattamy Homes, LLC
 1500 Gateway Blvd, Suite 220
 Boynton Beach, Florida 33426

Land Planner / Landscape Architect: Lucido & Associates
 701 East Ocean Boulevard
 Stuart, Florida 34994

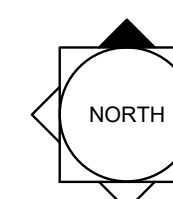
Engineer: Kimley Horn
 445 24th Street, Suite 200
 Vero Beach, Florida 32960

Surveyor: Caulfield & Wheeler, Inc.
 410 S.E. Port St. Lucie Blvd
 Port St. Lucie, Florida 34984

Mattamy Homes
 Tradition Parkway
 Extension
 Port St. Lucie, FL
 Median and Street
 Tree Landscaping

City of Port St. Lucie P#: P22-156
 PSLUSD # 5395B

Date	By	Description
04.20.22	SAW	Submittal
08.08.22	SAW	Resubmittal
09.23.22	SAW	Resubmittal
04.21.23	SAW	Resubmittal
05.16.24	SAW	Resubmittal



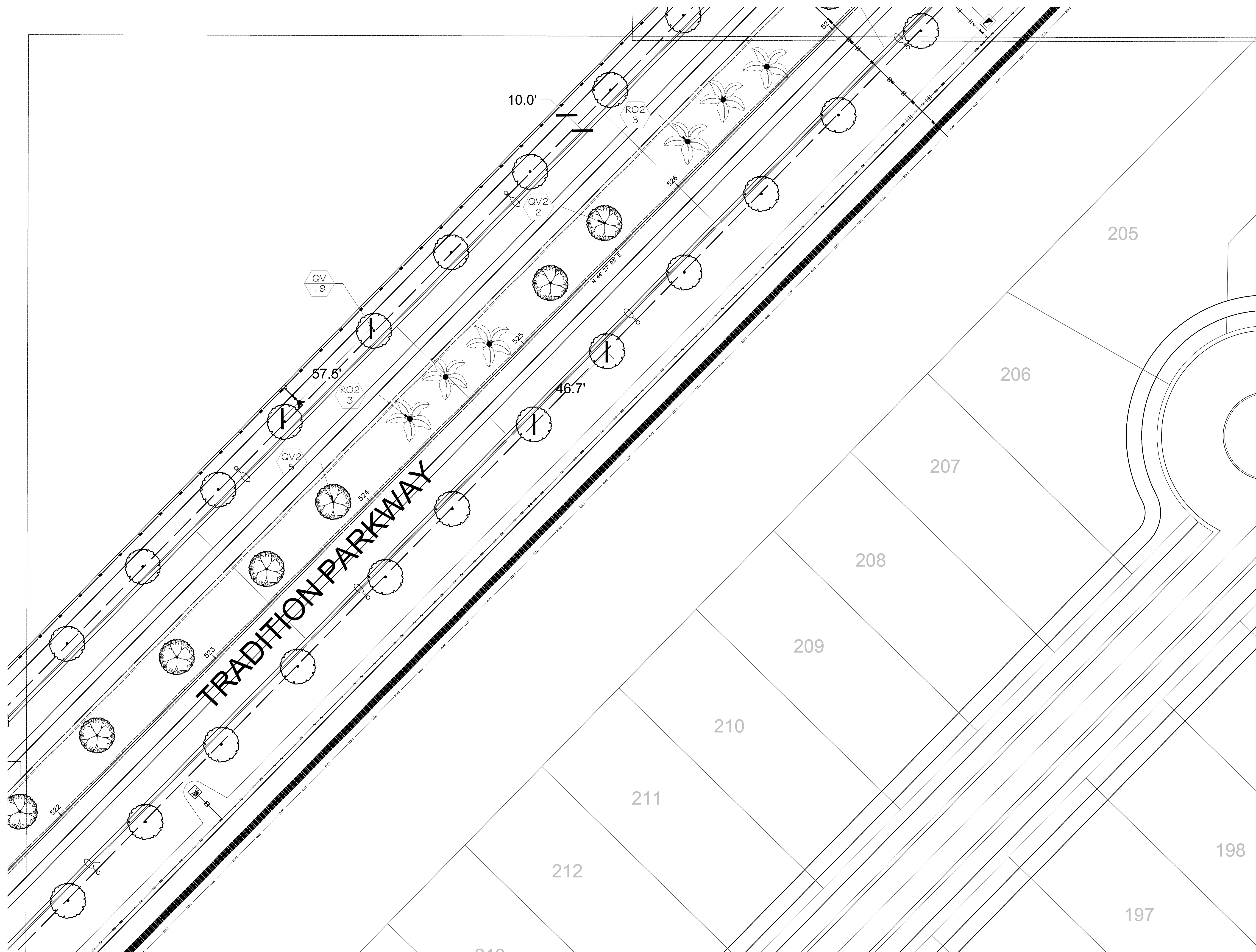
SCALE: 1" = 20'



REG. # 1018
 Thomas P. Lucido

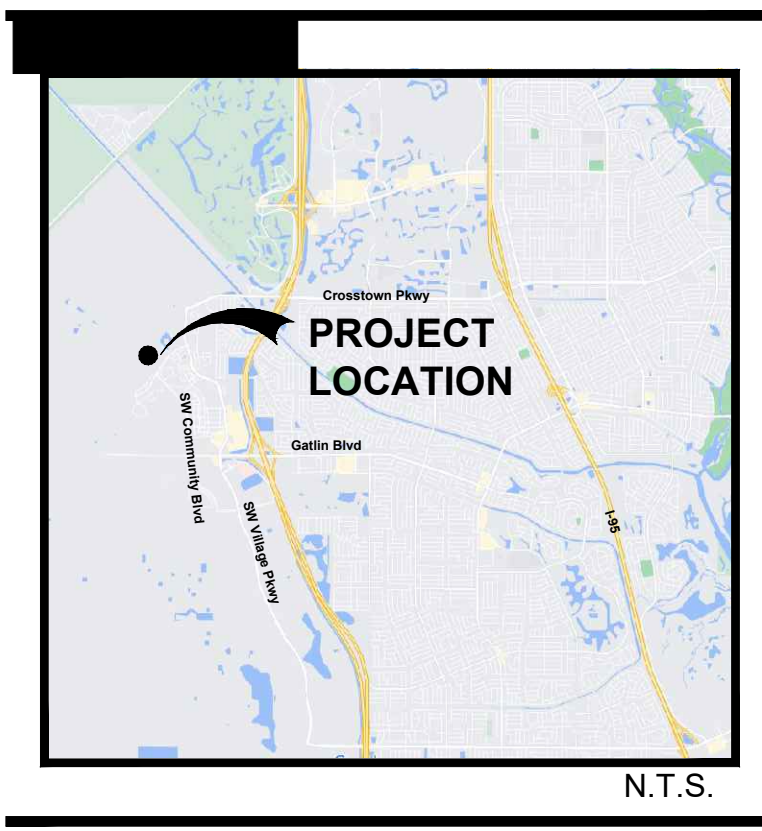
Designer: SJS Sheet
 Manager: SG
 Project Number: 20-276.20
 Municipal Number: P22-156, 5395B
 Computer File: WG-6-Tradition Pkwy Landscape.dwg

LA5



Drawing Name: C:\Users\swolf\AppData\Local\Temp\AcPublish_15616\ Jun 07, 2024 - 9:39am WG-6-Tradition Pkwy Landscape.dwg

Match Line See Sheet 2



Project Team:



Client & Property Owner: Mattamy Homes, LLC
 1500 Gateway Blvd, Suite 220
 Boynton Beach, Florida 33426

Land Planner / Landscape Architect: Lucido & Associates
 701 East Ocean Boulevard
 Stuart, Florida 34994

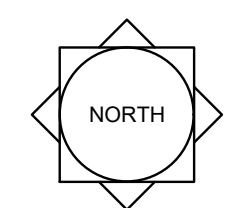
Engineer: Kimley Horn
 445 24th Street, Suite 200
 Vero Beach, Florida 32960

Surveyor: Caulfield & Wheeler, Inc.
 410 S.E. Port St. Lucie Blvd
 Port St. Lucie, Florida 34984

Mattamy Homes
 Tradition Parkway
 Extension
 Port St. Lucie, FL
 Median and Street
 Tree Landscaping

City of Port St. Lucie P#: P22-156
 PSLUSD # 5395B

Date	By	Description
04.20.22	SAW	Submittal
08.08.22	SAW	Resubmittal
09.23.22	SAW	Resubmittal
04.21.23	SAW	Resubmittal
05.16.24	SAW	Resubmittal



SCALE: 1" = 20'
 0 10' 20' 40'



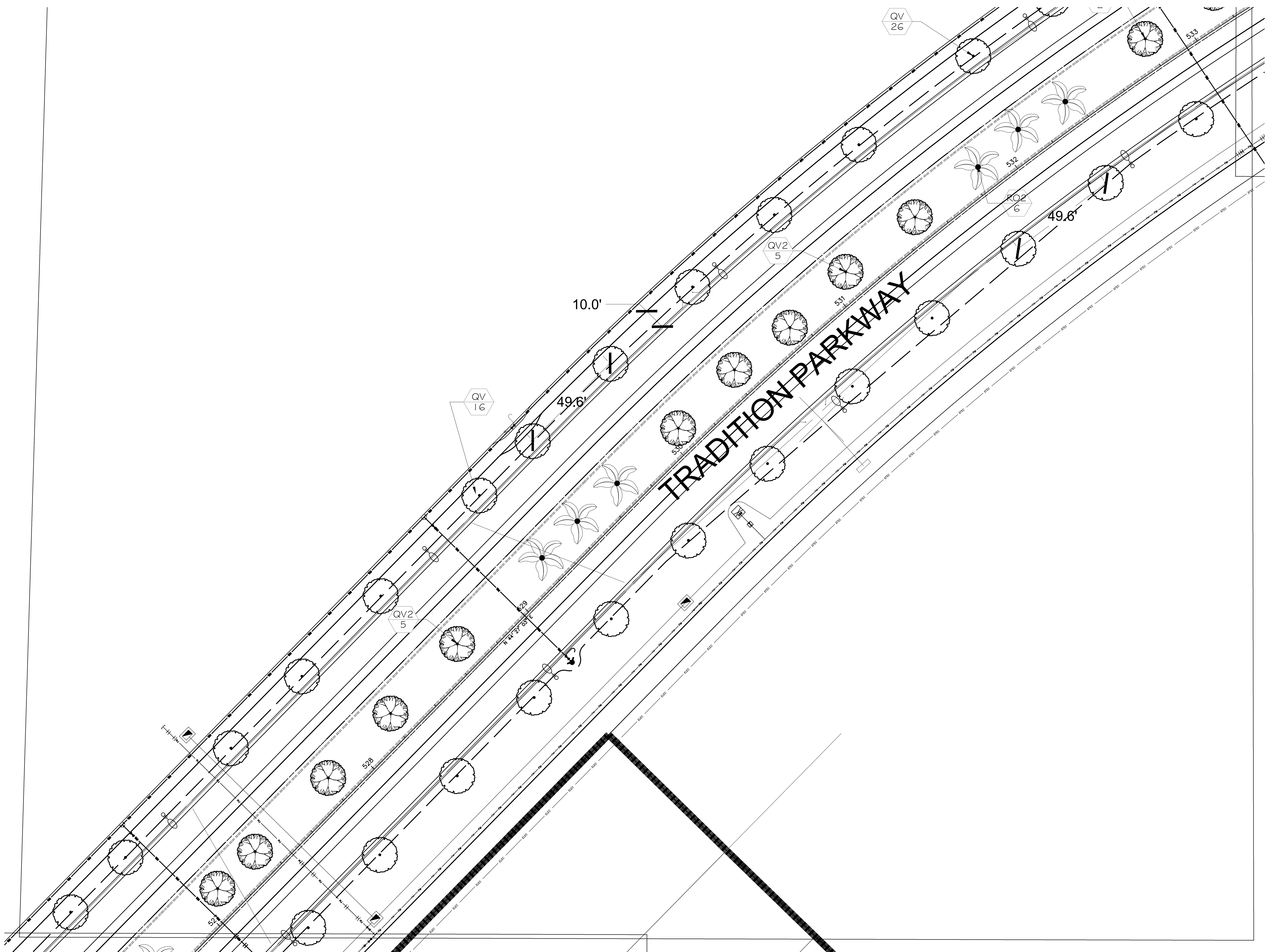
REG. # 1018
 Thomas P. Lucido

Designer SJS Sheet
 Manager SG
 Project Number 20-276.20
 Municipal Number P22-156, 5395B
 Computer File WG-6-Tradition Pkwy Landscape.dwg

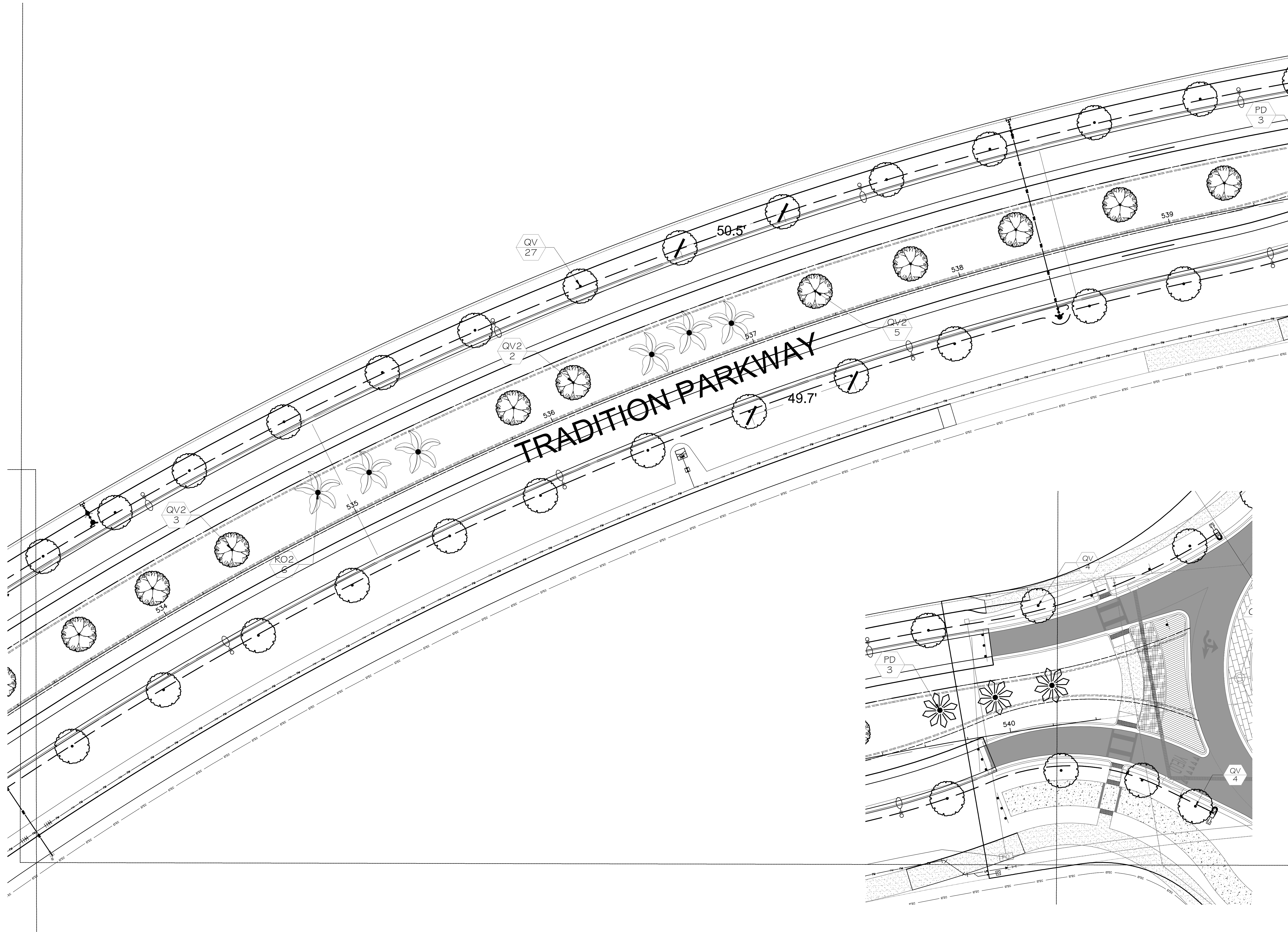
LA6

© Copyright Lucido & Associates. These documents and their contents are the property of Lucido & Associates. Any reproductions, revisions, modifications or use of these documents without the express written consent of Lucido & Associates is prohibited by law.

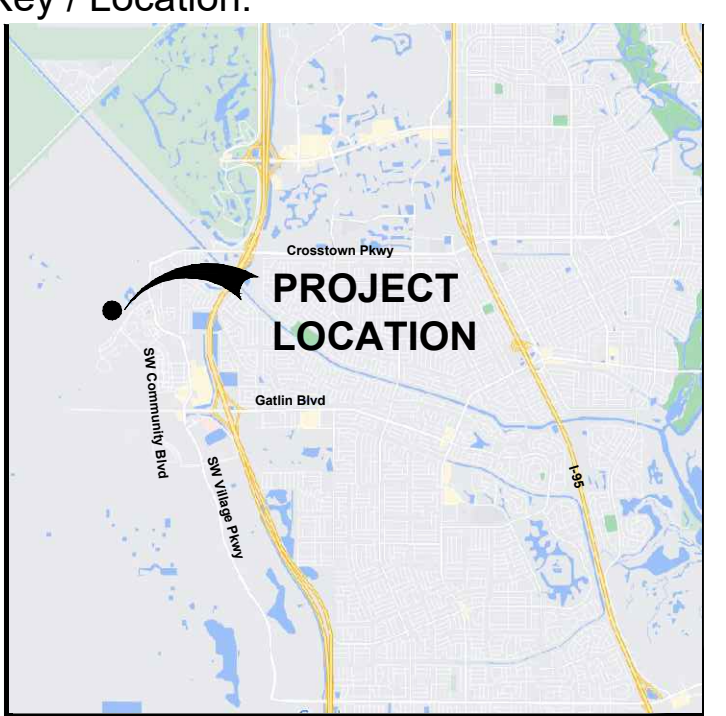
Drawing Name: C:\Users\swolf\AppData\Local\Temp\AcPublish_15616\ Jun 07, 2024 - 9:40am WG-6-Tradition Pkwy Landscape.dwg



Match Line See Sheet 2



Key / Location:



N.T.S.

Project Team:



Client & Property Owner: Mattamy Homes, LLC
 1500 Gateway Blvd, Suite 220
 Boynton Beach, Florida 33426

Land Planner / Landscape Architect: Lucido & Associates
 701 East Ocean Boulevard
 Stuart, Florida 34994

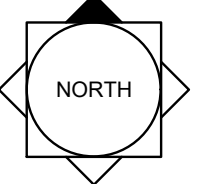
Engineer: Kimley Horn
 445 24th Street, Suite 200
 Vero Beach, Florida 32960

Surveyor: Caulfield & Wheeler, Inc.
 410 S.E. Port St. Lucie Blvd
 Port St. Lucie, Florida 34984

Mattamy Homes
 Tradition Parkway
 Extension
 Port St. Lucie, FL
 Median and Street
 Tree Landscaping

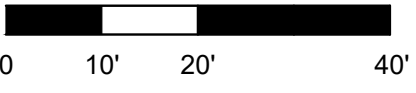
City of Port St. Lucie P#: P22-156
 PSLUSD # 5395B

Date	By	Description
04.20.22	SAW	Submittal
08.08.22	SAW	Resubmittal
09.23.22	SAW	Resubmittal
04.21.23	SAW	Resubmittal
05.16.24	SAW	Resubmittal



NORTH

SCALE: 1" = 20'

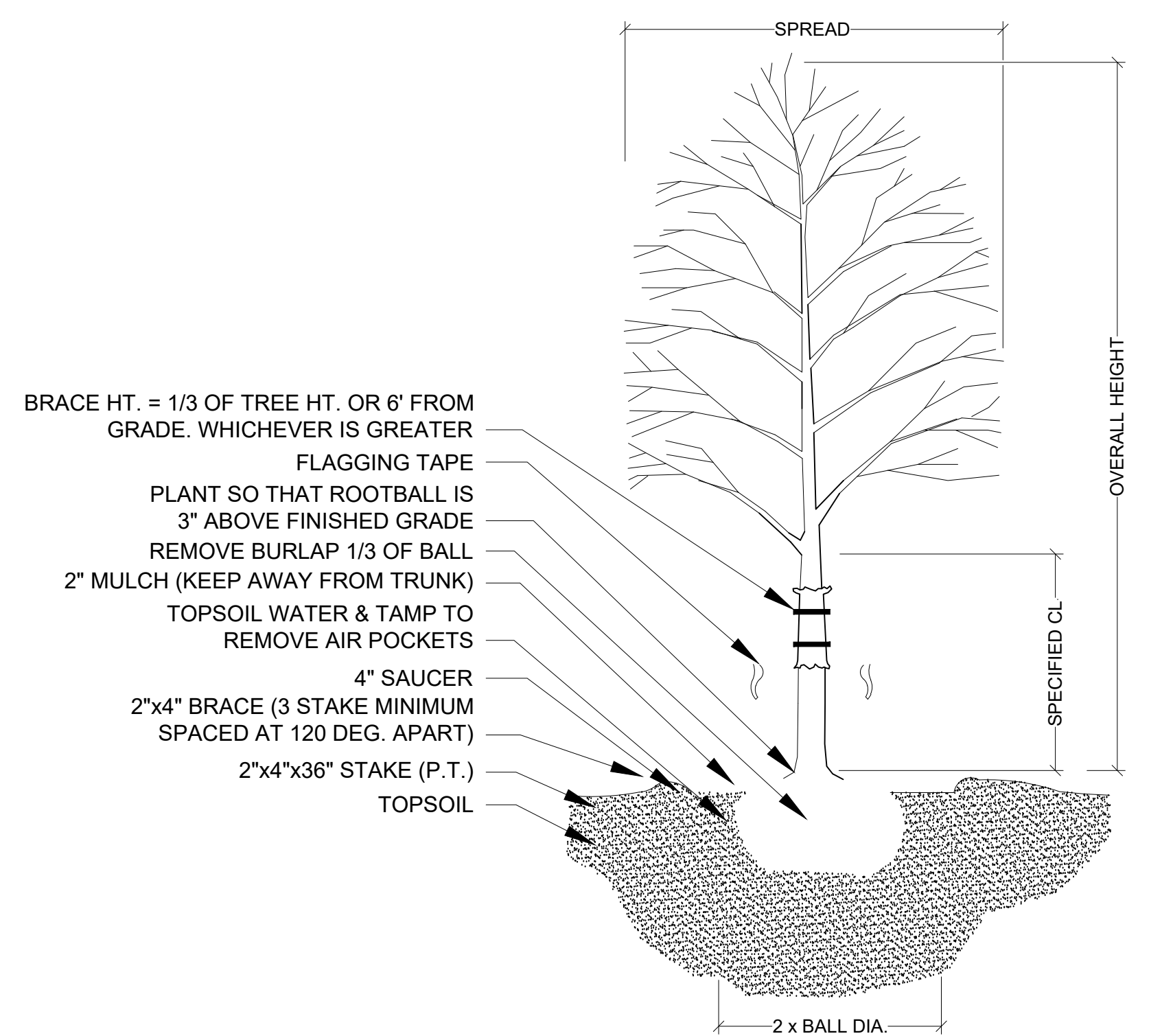


REG. # 1018
 Thomas P. Lucido

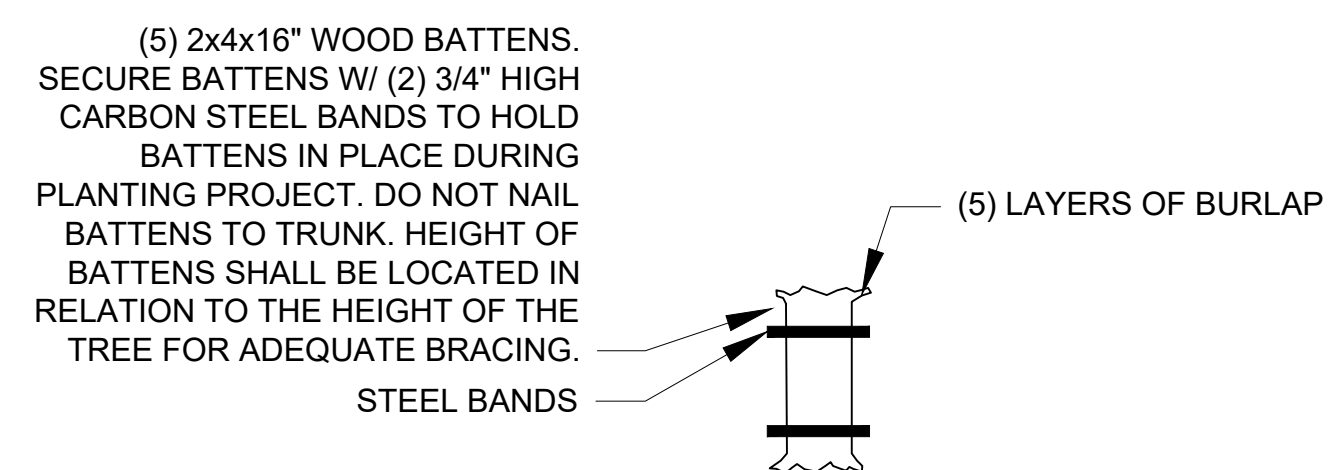
Designer: SJS Sheet
 Manager: SG
 Project Number: 20-276.20 **LA7**
 Municipal Number: P22-156, 5395B
 Computer File: WG-6-Tradition Pkwy Landscape.dwg

© Copyright Lucido & Associates. These documents and their contents are the property of Lucido & Associates. Any reproductions, revisions, modifications or use of these documents without the express written consent of Lucido & Associates is prohibited by law.

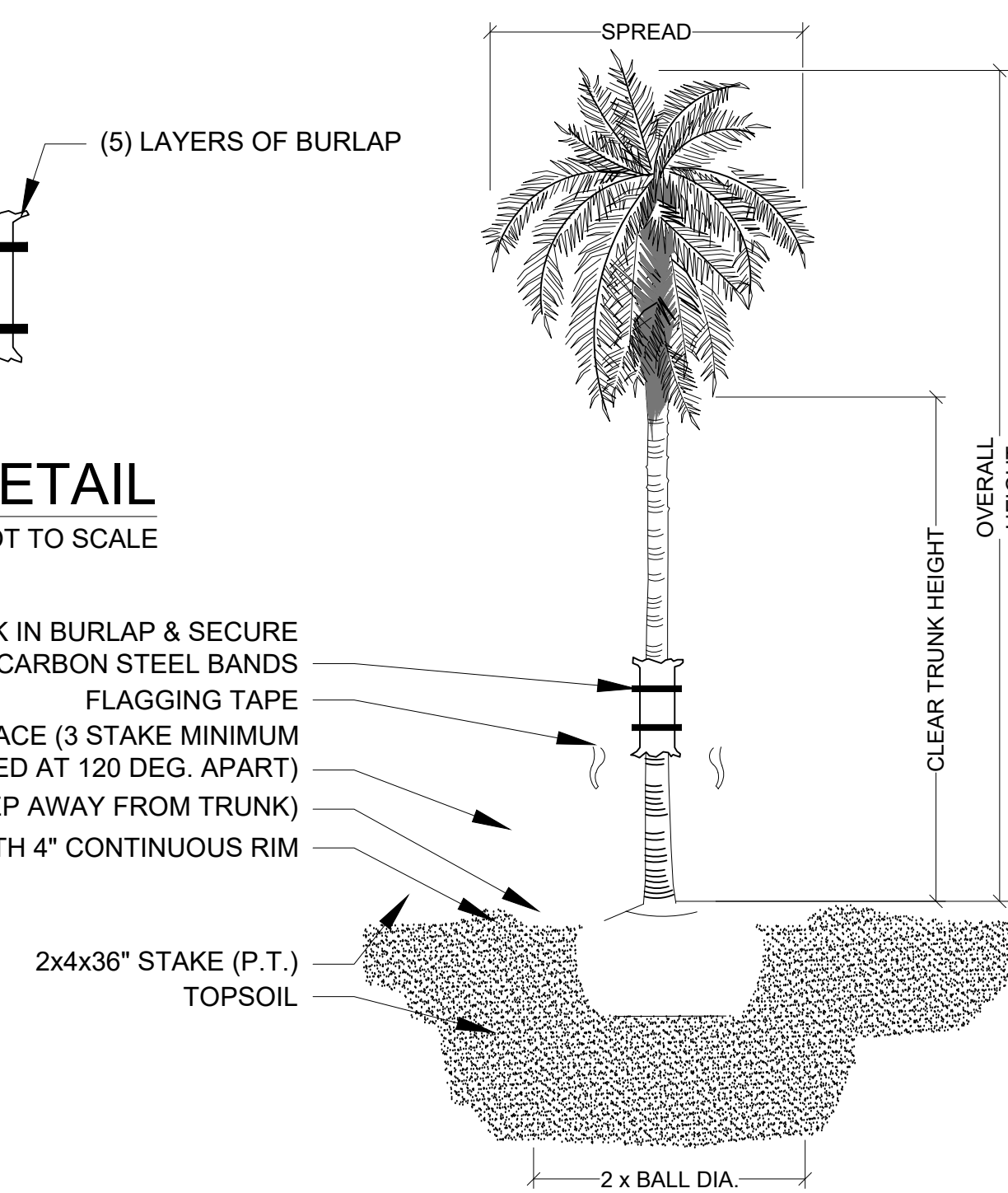
Drawing Name: C:\Users\swolf\AppData\Local\Temp\AcPublish_15616\ Jun 07, 2024 - 9:40am WG-6-Tradition Pkwy Landscape.dwg



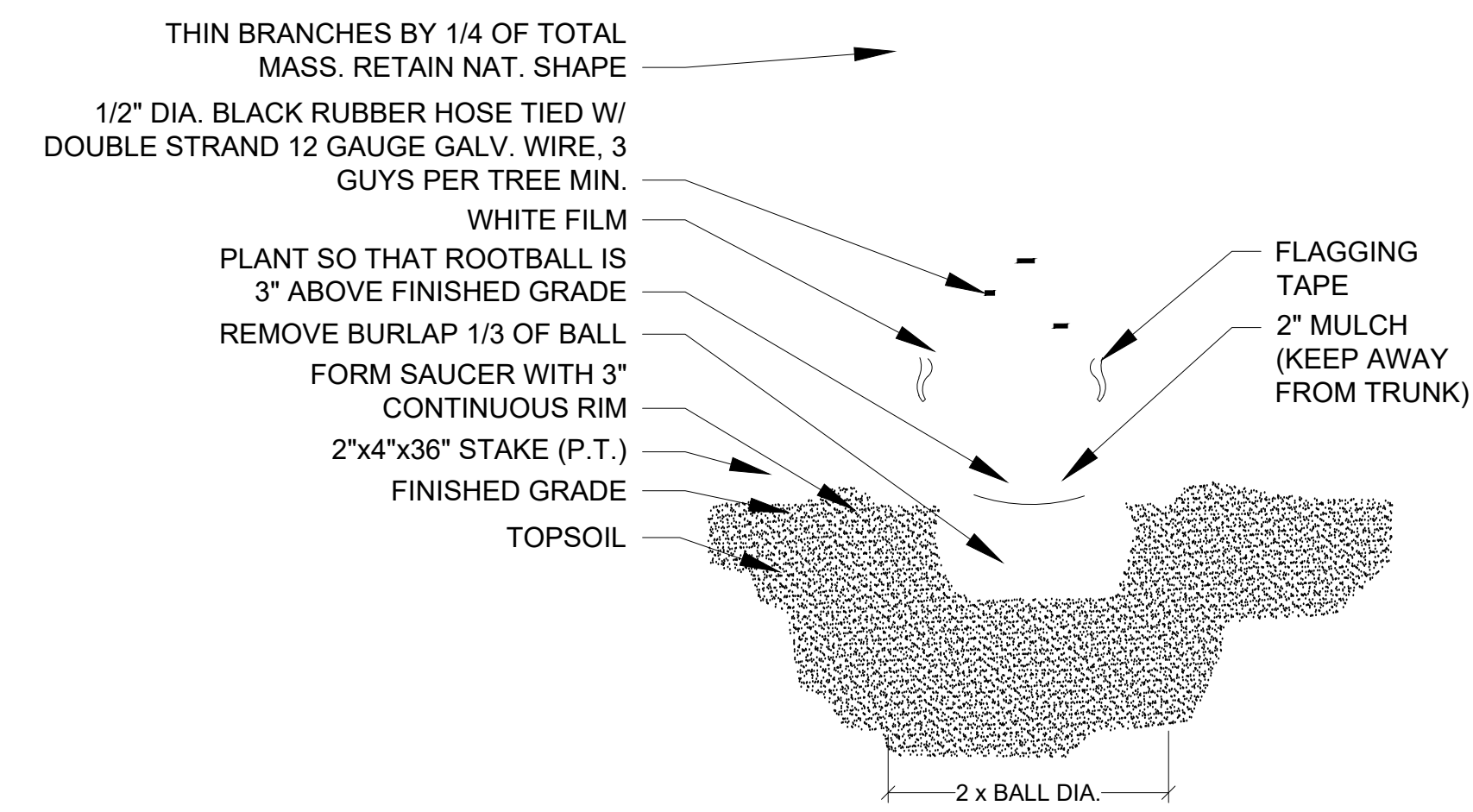
TREE PLANTING & STAKING
 NOT TO SCALE



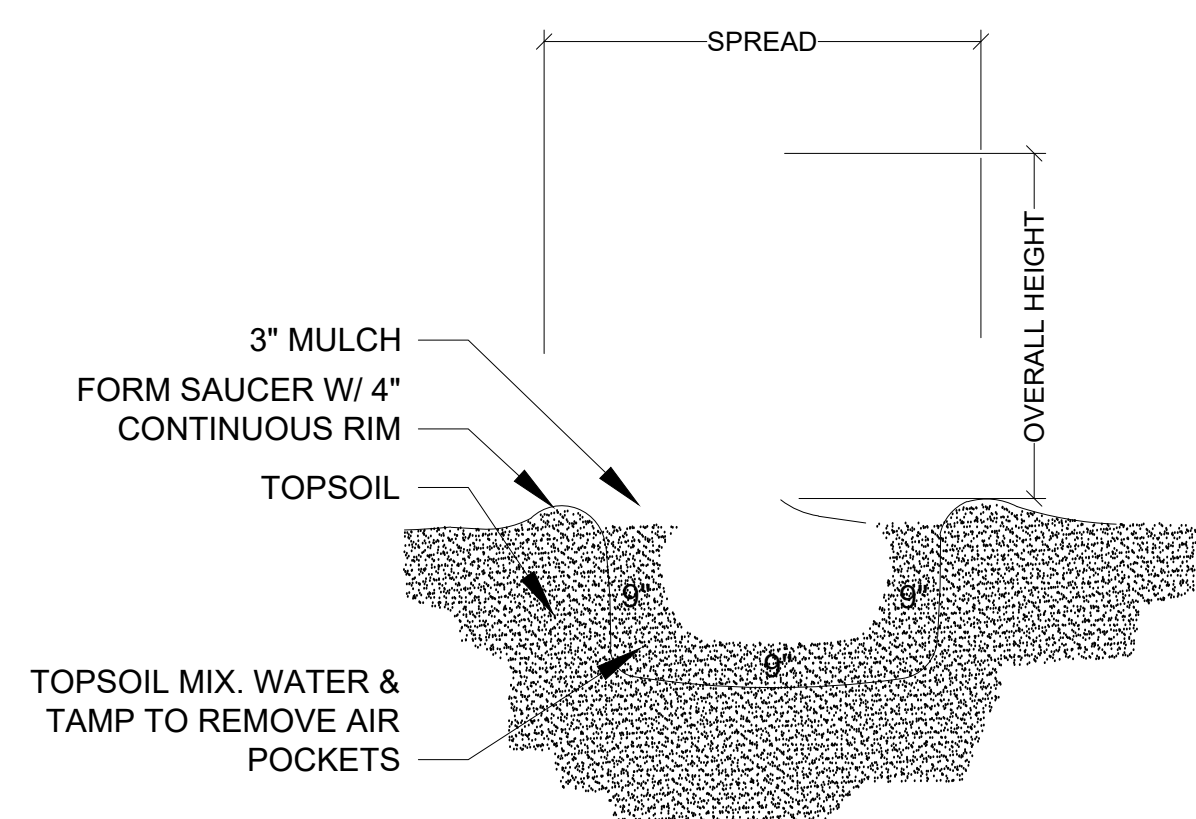
BRACING DETAIL
 NOT TO SCALE



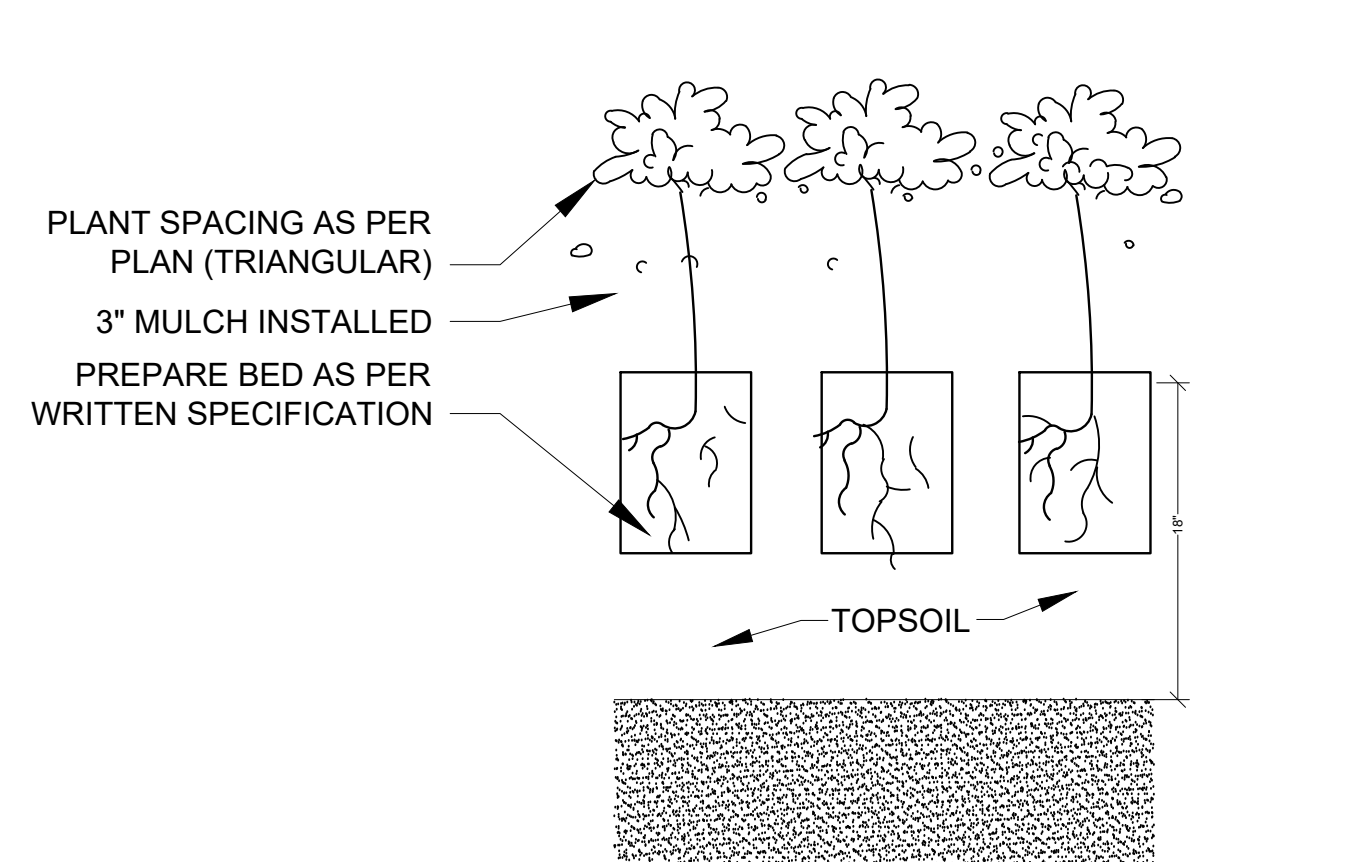
PALM PLANTING - ANGLE STAKE
 NOT TO SCALE



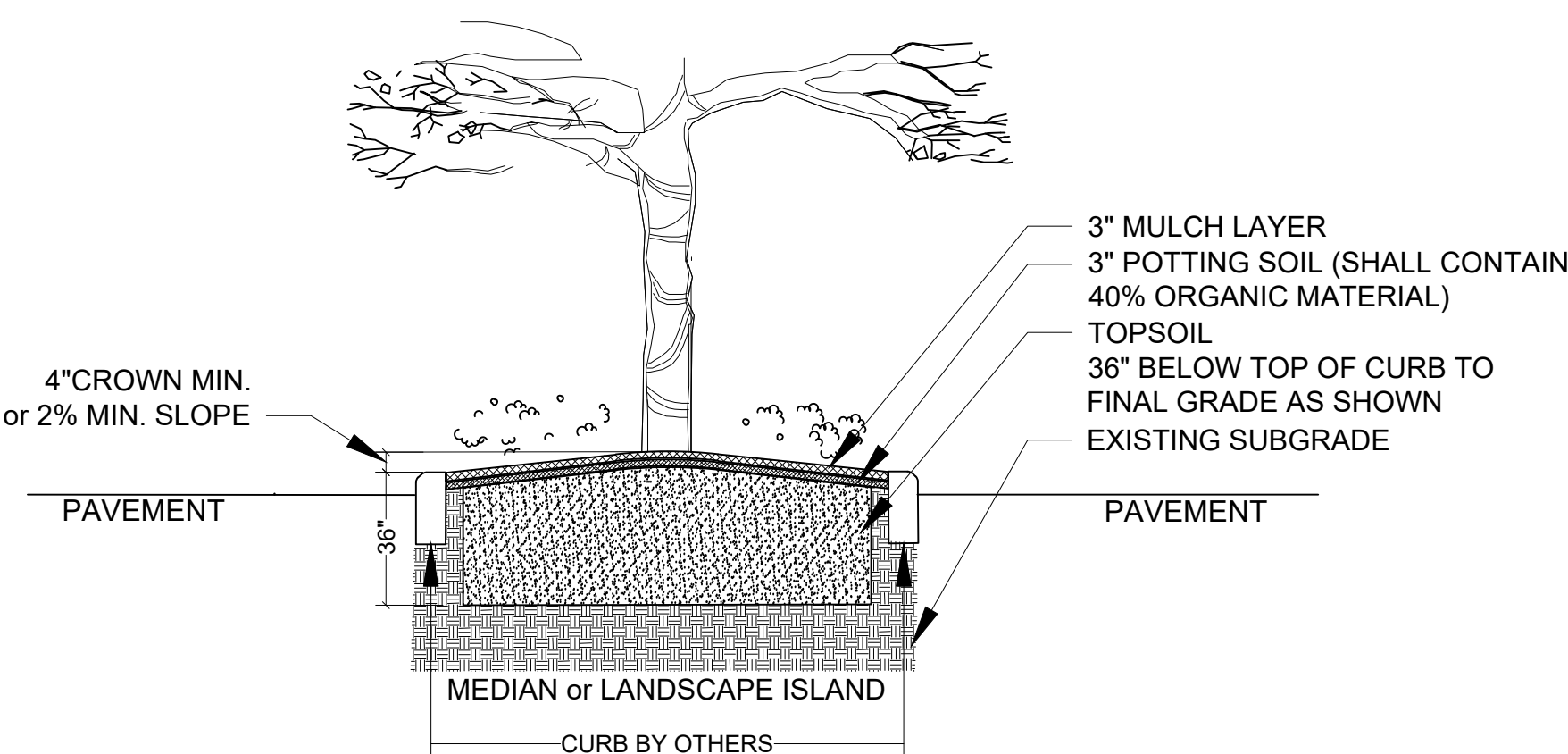
MULTI-TRUNK PLANTING & GUYING
 NOT TO SCALE



SHRUB PLANTING
 NOT TO SCALE

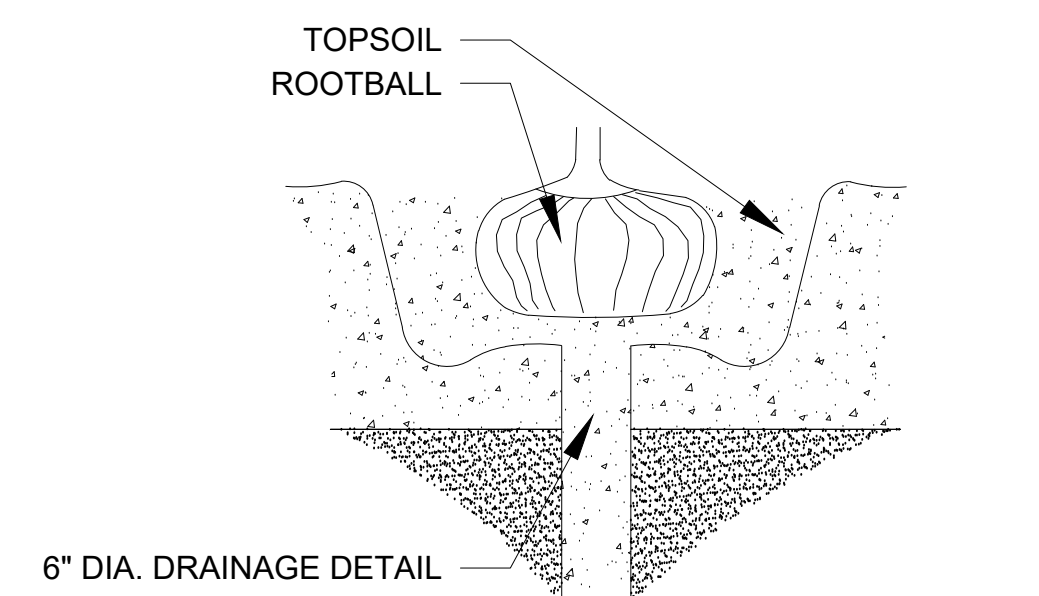


GROUNDCOVER PLANTING DETAIL
 NOT TO SCALE

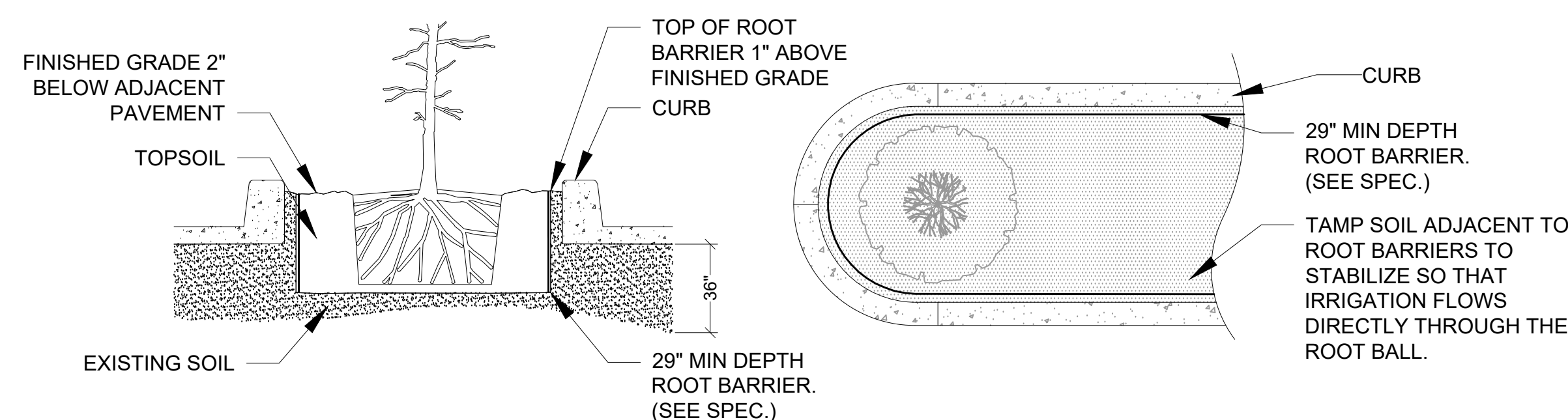


LANDSCAPE AREA PREPARATION DETAIL
 NOT TO SCALE

- * TOPSOIL SHALL BE NATURAL FRIABLE, FINE LOAMY SOIL POSSESSING CHARACTERISTICS OF REPRESENTATIVE TOPSOIL IN THE VICINITY OF THE PROJECT SITE THAT PRODUCES HEAVY GROWTH.
- TOPSOIL SHALL HAVE A PH RANGE OF 5.5-7.4, FREE FROM SUBSOIL, WEEDS, LITTER, SODS, CLAY, STONES, STUMPS, ROOTS, TRASH, HERBICIDES, TOXIC SUBSTANCES, OR ANY OTHER MATERIAL WHICH MAY BE HARMFUL TO PLANT GROWTH OR HINDER PLANTING OPERATIONS.
- TOPSOIL SHALL CONTAIN A MINIMUM OF 3% ORGANIC MATERIAL.
- TOPSOIL MUST PERCOLATE WATER AT A RATE OF 1" PER HOUR (SEE ALSO DRAINAGE TESTING DETAIL FOR TREES)
- LANDSCAPE AREA SOILS SHALL BE APPROVED BY LANDSCAPE ARCHITECT/TOWNER PRIOR TO PLANTING

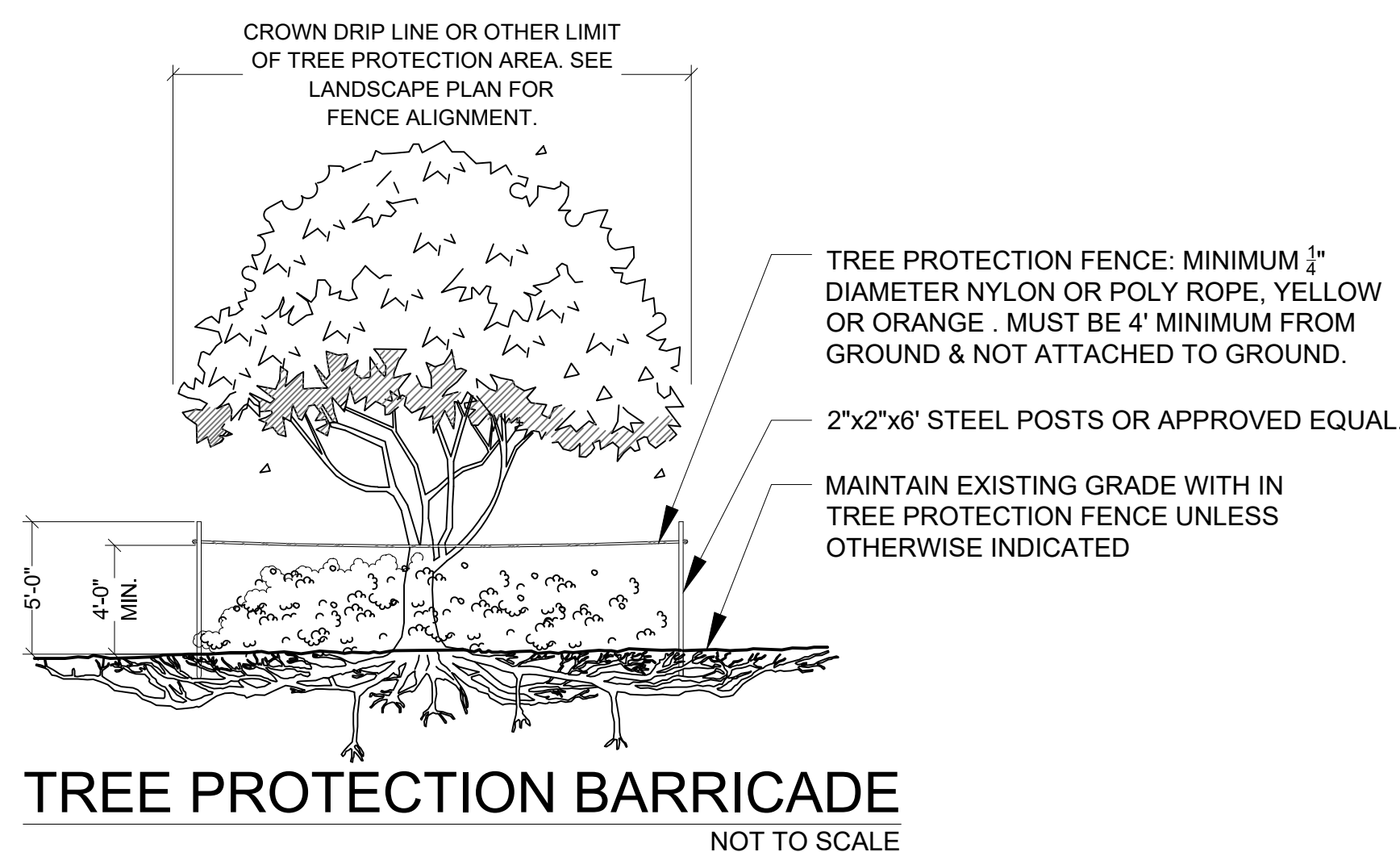


DRAINAGE TESTING DETAIL
 NOT TO SCALE



SPECIAL APPLICATIONS ROOT BARRIER DETAIL
 NOT TO SCALE

- NOTES:
 1- ROOT BARRIER SHALL BE INSTALLED WHEN ROOT BALL IS LOCATED WITHIN 5' OF PAVEMENT, CURB AND OR UTILITY LINES.
 2- ROOT BARRIER SHALL BE "BIO-BARRIER 29" DEPTH OR APPROVED EQUAL.
 3- ROOT BARRIER SHALL BE INSTALLED PER MANUFACTURER'S SPECIFICATIONS AND RECOMMENDATIONS.



TREE PROTECTION BARRICADE
 NOT TO SCALE

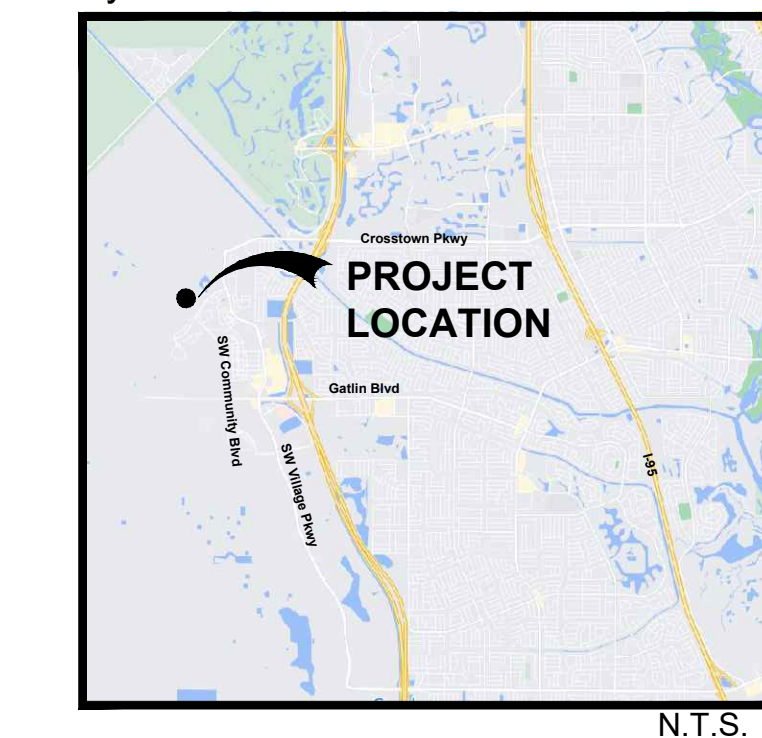
- NOTES:
 1- SEE LANDSCAPE PLAN FOR FENCE ALIGNMENT.
 2- NO PRUNING SHALL BE PERFORMED EXCEPT BY APPROVED ARBORIST.
 3- NO EQUIPMENT SHALL OPERATE INSIDE THE PROTECTIVE FENCING INCLUDING DURING FENCE INSTALLATION AND REMOVAL.

DRAINAGE TESTING/DRAINAGE CHANNEL REQUIREMENTS.

PRIOR TO PLANTING, ALL PLANTING PITS SELECTED FOR TESTING SHALL BE TESTED IN THE FOLLOWING MANNER.

- DIG EACH PLANTING PIT TO THE MINIMUM SPECIFIED SIZE.
- FILL PLANTING PIT WITH TWELVE INCHES (12") OF WATER. IF THE WATER LEVEL DROPS FOUR (4") OR MORE WITHIN FOUR (4) HOURS, THE DRAINAGE IS SUFFICIENT AND A DRAINAGE CHANNEL IS NOT REQUIRED. IF THE WATER LEVEL DROPS LESS THAN FOUR INCHES (4") WITHIN THE FOUR (4) HOUR PERIOD, A DRAINAGE CHANNEL IS REQUIRED.
- WHERE REQUIRED, THE DRAINAGE CHANNEL MUST EXTEND DOWN THROUGH THE NON POROUS SOIL AND INTO POROUS SOIL. (SEE DETAIL)
- ALL MATERIAL REMOVED FROM THE DRAINAGE CHANNEL SHALL BE DISCARDED.
- WHEN BACKFILLING PLANTING PITS WITH NATIVE TOPSOIL, CARE MUST BE TAKEN TO KEEP THE CONSISTENCY OF THE SOIL MIX THE SAME THROUGHOUT THE PLANTING PIT AND DRAINAGE CHANNEL.

Key / Location:



Project Team:



Client & Property Owner: Mattamy Homes, LLC
 1500 Gateway Blvd., Suite 220
 Boynton Beach, Florida 33426

Land Planner / Landscape Architect: Lucido & Associates
 701 East Ocean Boulevard
 Stuart, Florida 34994

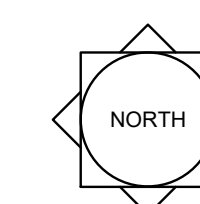
Engineer: Kimley Horn
 445 24th Street, Suite 200
 Vero Beach, Florida 32960

Surveyor: Caulfield & Wheeler, Inc.
 410 S.E. Port St. Lucie Blvd
 Port St. Lucie, Florida 34984

Mattamy Homes
 Tradition Parkway Extension
 Port St. Lucie, FL
 Landscape Details

City of Port St. Lucie P#: P22-156
 PSLUSD # 5395B

Date	By	Description
04.20.22	SAW	Submittal
08.08.22	SAW	Resubmittal
09.23.22	SAW	Resubmittal
04.21.23	SAW	Resubmittal
05.16.24	SAW	Resubmittal



SCALE: 1" = 0'
 0 0 0 0

REG. # 1018
 Thomas P. Lucido

Designer: SJS
 Manager: SG
 Project Number: 20-276.20
 Municipal Number: P22-156, 5395B
 Computer File: WG-6-Tradition Pkwy Landscape.dwg

LA8

Drawing Name: C:\Users\swolf\AppData\Local\Temp\AcPublish_15616\ Jun 07, 2024 - 9:40am WG-6-Tradition Pkwy Landscape.dwg

