

VERANO, P.U.D. NO. 1, PLAT NO. 22

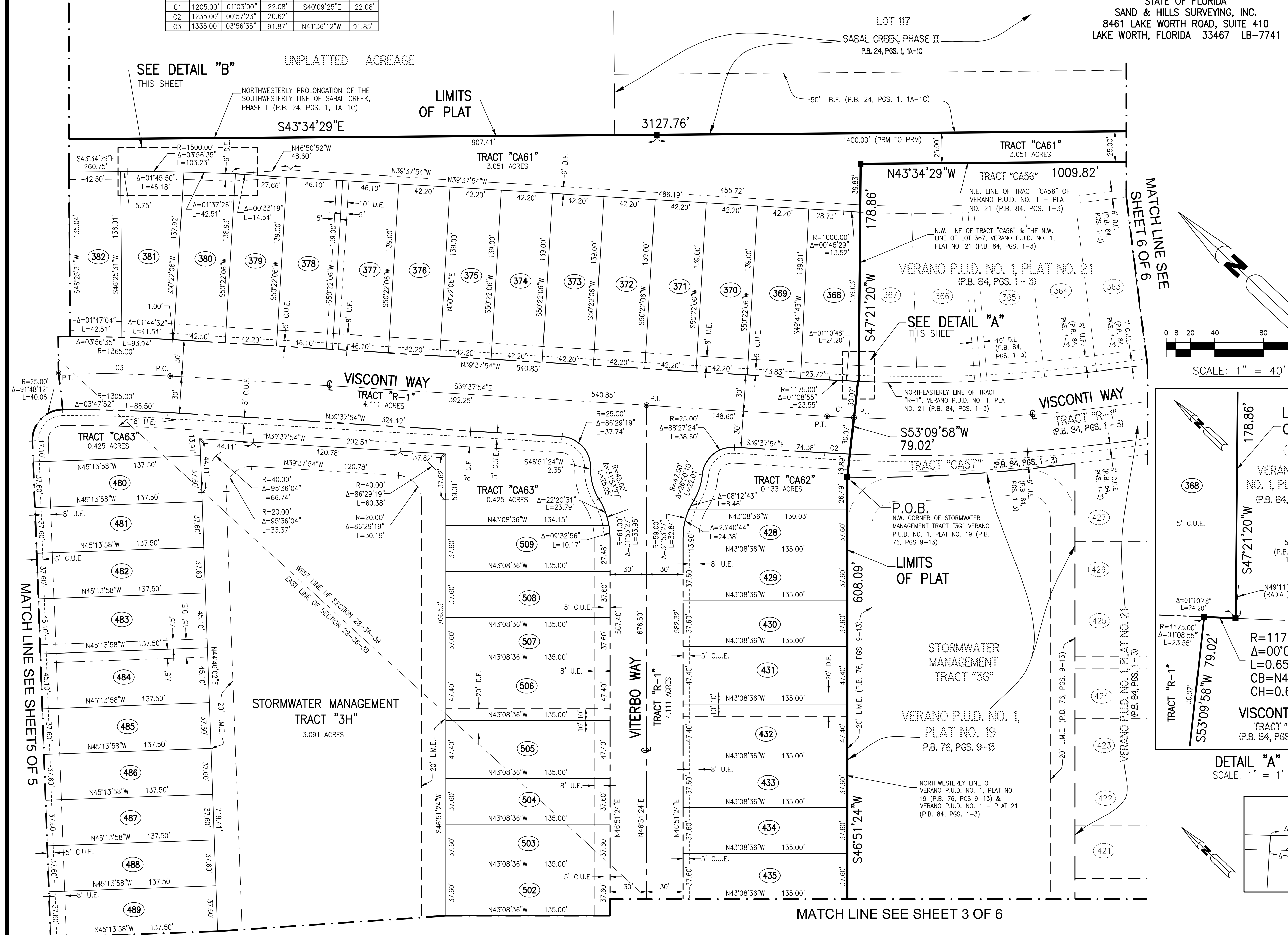
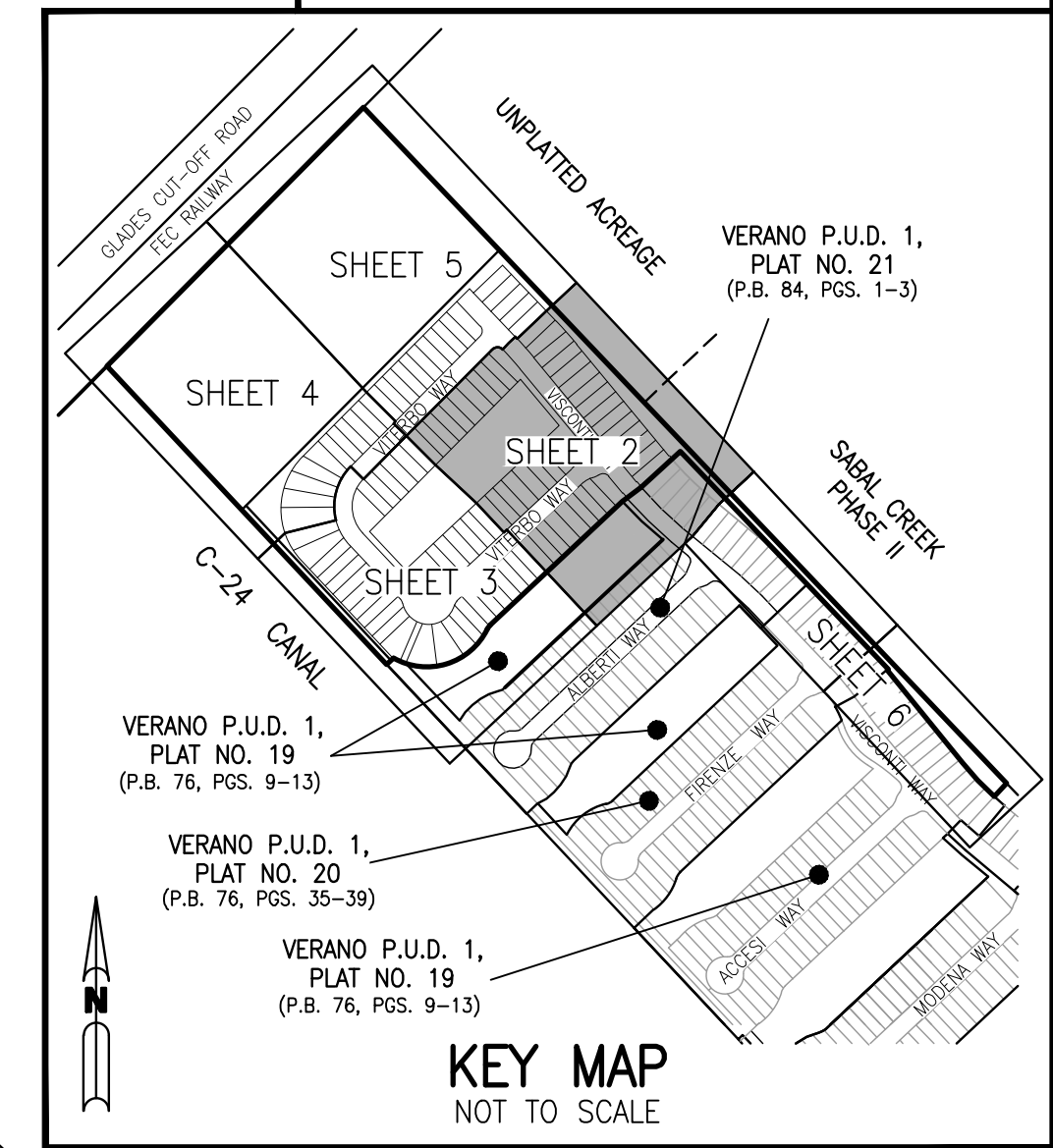
BEING A REPLAT OF ALL OF TRACT "CA46", VERANO P.U.D. NO. 1, PLAT NO. 19, ACCORDING TO THE PLAT THEREOF AS RECORDED IN PLAT BOOK 76, PAGES 9 THROUGH 13 AND ALL OF TRACT "A", VERANO P.U.D. NO. 1, PLAT NO. 21, ACCORDING TO THE PLAT THEREOF AS RECORDED IN PLAT BOOK 84, PAGES 1 THROUGH 3 ALL OF THE PUBLIC RECORDS OF ST. LUCIE COUNTY, FLORIDA, TOGETHER WITH A PORTION OF UNPLATTED LANDS LYING WITHIN SECTIONS 28 AND 29, TOWNSHIP 36 SOUTH, RANGE 39 EAST OF ST. LUCIE COUNTY, FLORIDA, IN THE CITY OF PORT ST. LUCIE FLORIDA

SHEET 2 OF 5

THIS INSTRUMENT PREPARED BY
PERRY C. WHITE, P.S.M. 4213,
STATE OF FLORIDA
SAND & HILLS SURVEYING, INC.
8461 LAKE WORTH ROAD, SUITE 410
LAKE WORTH, FLORIDA 33467 LB-7741

PLAT BOOK	
PAGE	
FILE NO.	
DATE	
TIME	

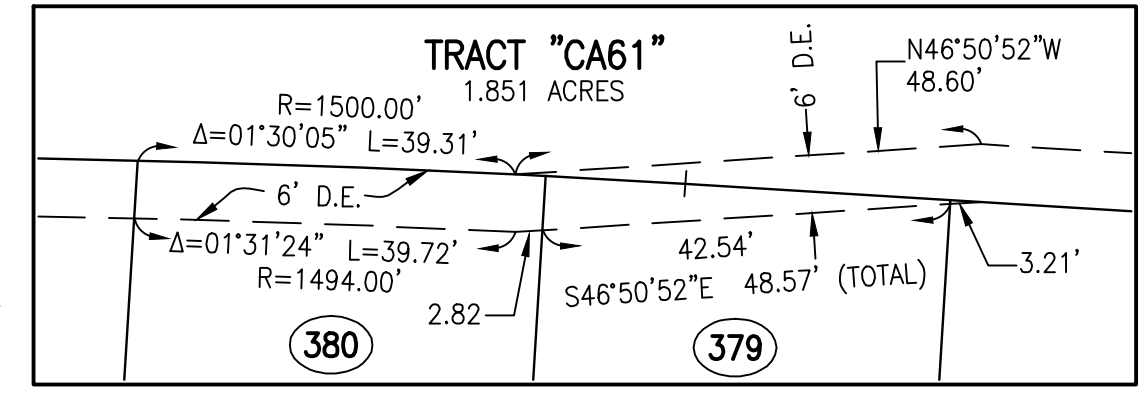
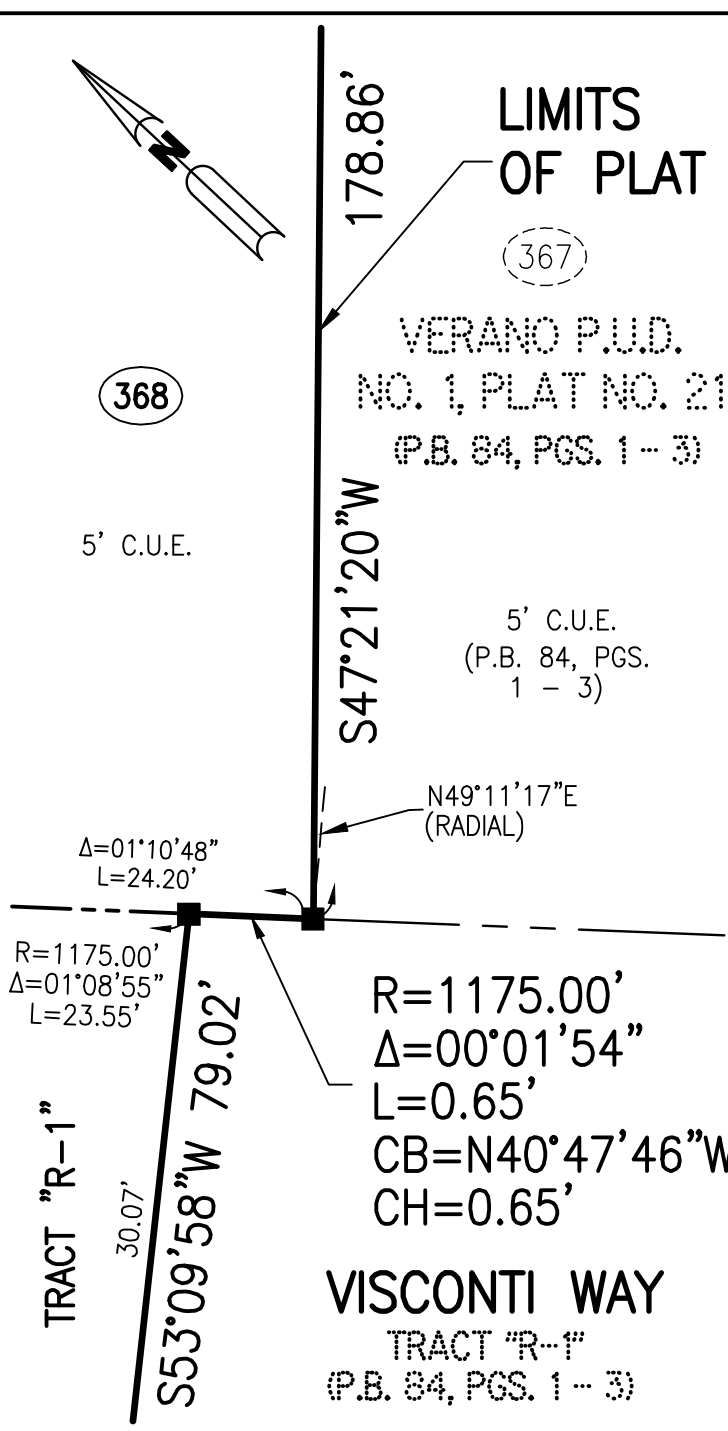
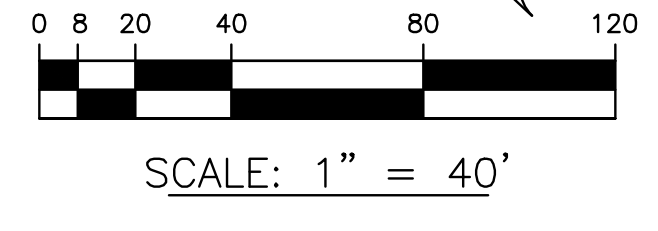
CURVE TABLE				
CURVE	RADIUS	DELTA	LENGTH	CHORD BEARING
C1	1205.00'	01°03'00"	22.08'	S40°09'25"E
C2	1235.00'	00°57'23"	20.62'	
C3	1335.00'	03°56'35"	91.87'	N41°36'12"W



MATCH LINE SEE SHEET 6 OF 6

MATCH LINE SEE SHEETS 5 OF 5

MATCH LINE SEE SHEET 3 OF 6



- LEGEND:**
- = SET PERMANENT REFERENCE MONUMENT 5/8" IRON ROD WITH 1.5" CAP STAMPED L.B. #7741
 - = FOUND PERMANENT REFERENCE MONUMENT PRM LB 7062
 - = PERMANENT CONTROL POINT LB 7062
 - Δ = DELTA ANGLE
 - L = ARC LENGTH
 - R = RADIUS
 - C = CENTERLINE
 - E.A.E. = EMERGENCY ACCESS EASEMENT
 - B.P.E. = BRIDLE PATH EASEMENT
 - CB = CHORD BEARING
 - CH = CHORD DISTANCE
 - C.U.E. = CITY UTILITY EASEMENT
 - D.E. = DRAINAGE EASEMENT
 - I.E. = IRRIGATION EASEMENT
 - LB = LICENSED SURVEY BUSINESS
 - L.E. = LANDSCAPE EASEMENT
 - L.M.E. = LAKE MAINTENANCE EASEMENT
 - (N.R.) = NON RADIAL
 - O.R.B. = OFFICIAL RECORDS BOOK
 - P.B. = PLAT BOOK
 - P.C. = POINT OF CURVATURE
 - P.I. = POINT OF INTERSECTION
 - P.O.B. = POINT OF BEGINNING
 - PRM = PERMANENT REFERENCE MONUMENT
 - P.T. = POINT OF TANGENCY
 - RP = RADIUS POINT
 - (RAD.) = RADIAL
 - R.W.E. = REUSE WATER EASEMENT
 - R/W = RIGHT-OF-WAY
 - SEC. = SECTION
 - S.F.W.M.D. = SOUTH FLORIDA WATER MANAGEMENT DISTRICT
 - U.E. = UTILITY EASEMENT
 - E.A.E. = EMERGENCY ACCESS EASEMENT
 - (142) = PROPOSED LOT NUMBER
 - (274) = EXISTING LOT NUMBER

VERANO, P.U.D. NO. 1, PLAT NO. 22

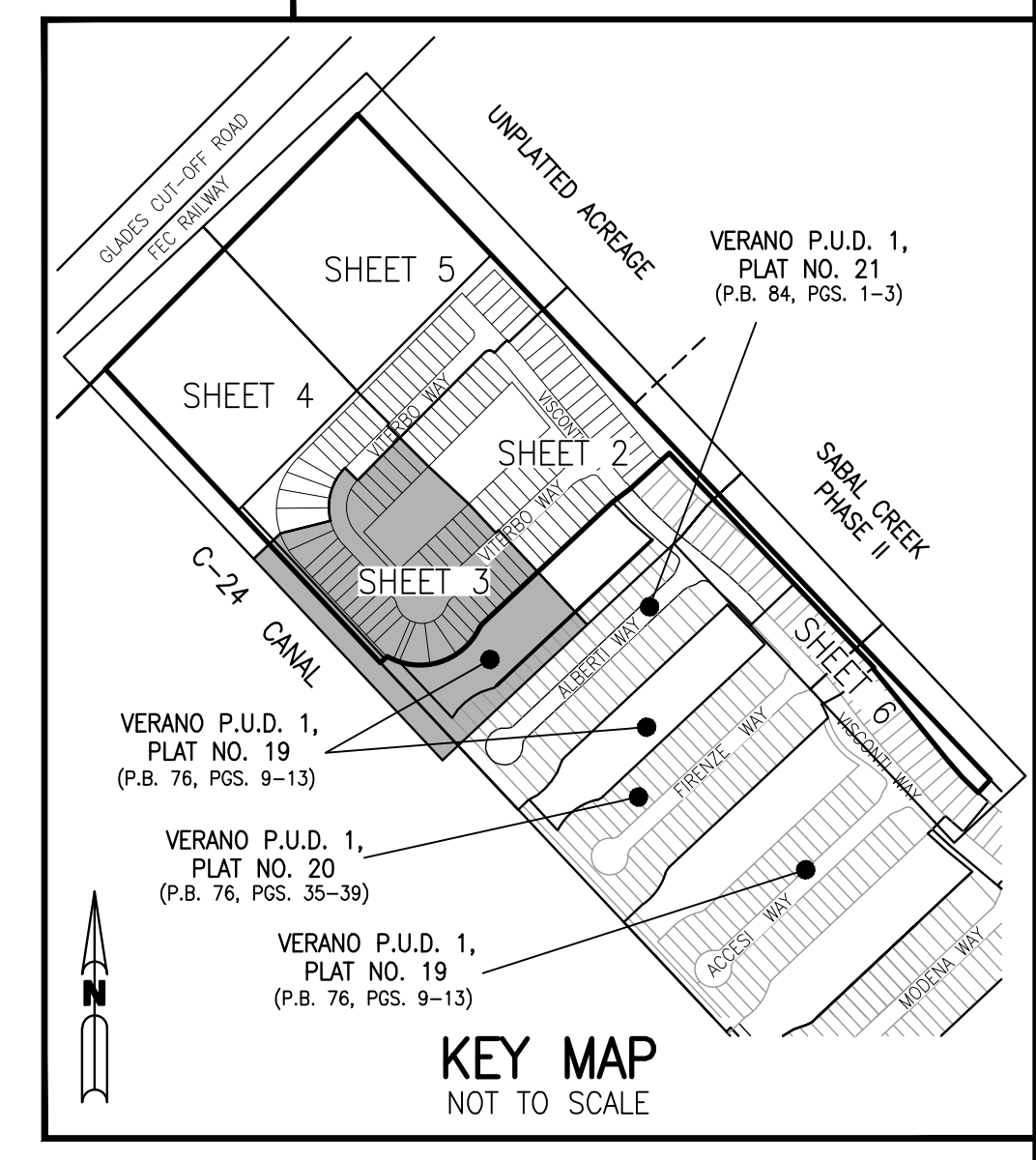
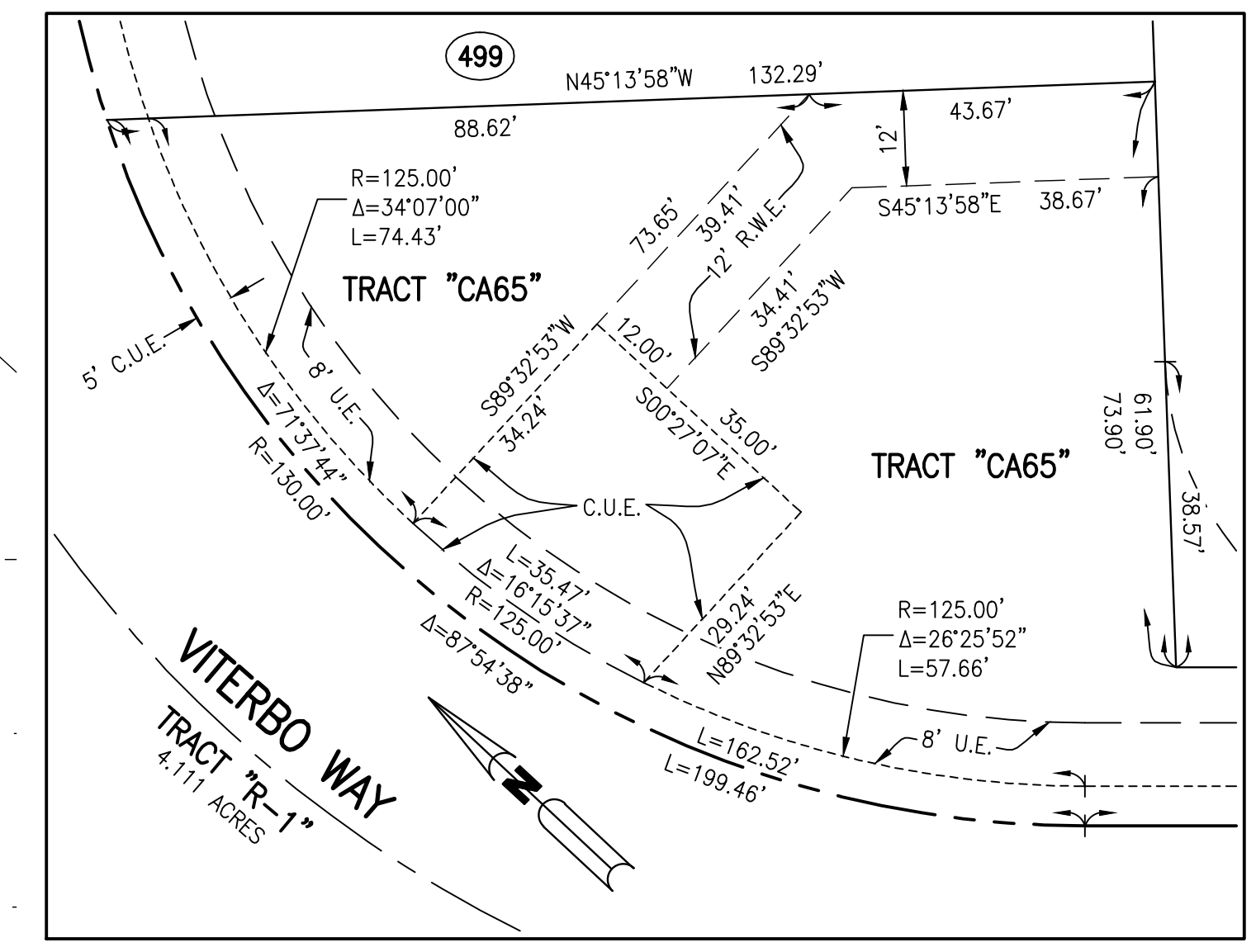
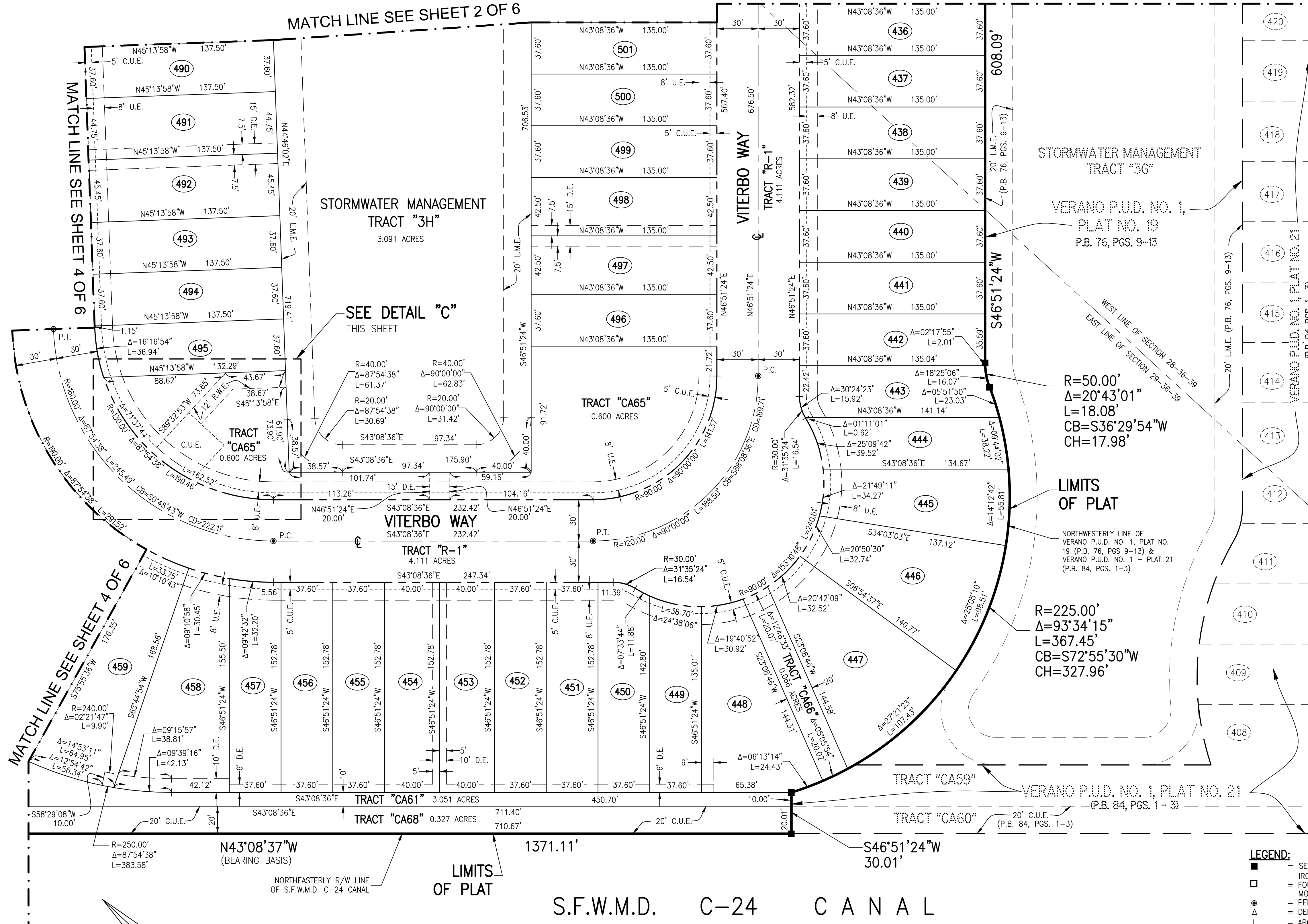
BEING A REPLAT OF ALL OF TRACT "CA46", VERANO P.U.D. NO. 1, PLAT NO. 19, ACCORDING TO THE PLAT THEREOF AS RECORDED IN PLAT BOOK 76, PAGES 9 THROUGH 13 AND ALL OF TRACT "A", VERANO P.U.D. NO. 1, PLAT NO. 21, ACCORDING TO THE PLAT THEREOF AS RECORDED IN PLAT BOOK 84, PAGES 1 THROUGH 3 ALL OF THE PUBLIC RECORDS OF ST. LUCIE COUNTY, FLORIDA, TOGETHER WITH A PORTION OF UNPLATTED LANDS LYING WITHIN SECTIONS 28 AND 29, TOWNSHIP 36 SOUTH, RANGE 39 EAST OF ST. LUCIE COUNTY, FLORIDA, IN THE CITY OF PORT ST. LUCIE FLORIDA

PLAT BOOK	
PAGE	
FILE NO.	
DATE	
TIME	

SHEET 3 OF 6

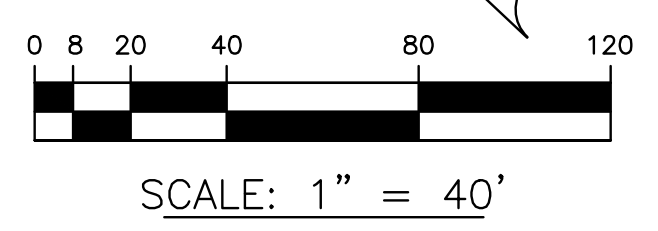
MATCH LINE SEE SHEET 2 OF 6

MATCH LINE SEE SHEET 2 OF 6



LEGEND:

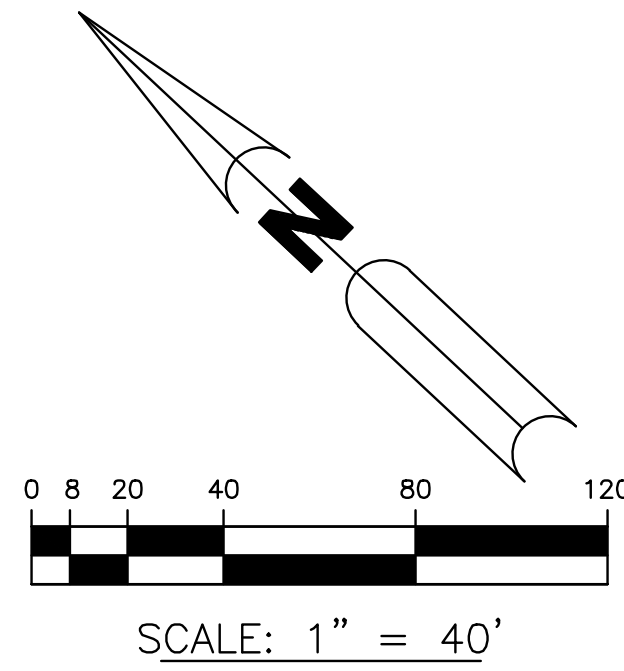
■	= SET PERMANENT REFERENCE MONUMENT 5/8"	P.B.	= PLAT BOOK
□	= IRON ROAD WITH 1.5" CAP STAMPED L.B. #7741	P.C.	= POINT OF CURVATURE
○	= FOUND PERMANENT REFERENCE MONUMENT PRM LB 7062	PG.	= PAGE
●	= PERMANENT CONTROL POINT LB 7062	P.I.	= POINT OF INTERSECTION
Δ	= DELTA ANGLE	P.O.B.	= POINT OF BEGINNING
L	= ARC LENGTH	PRM	= PERMANENT REFERENCE MONUMENT
R	= RADIUS	P.T.	= POINT OF TANGENCY
CL	= CENTERLINE	RP	= RADIAL POINT
E.A.E.	= EMERGENCY ACCESS EASEMENT	(RAD.)	= RADIAL
B.E.	= BRIDLE PATH EASEMENT	R.W.E.	= REUSE WATER EASEMENT
CB	= CHORD BEARING	R/W	= RIGHT-OF-WAY
CH	= CHORD DISTANCE	SEC.	= SECTION
C.U.E.	= CITY UTILITY EASEMENT	S.F.W.M.D.	= SOUTH FLORIDA WATER MANAGEMENT DISTRICT
D.E.	= DRAINAGE EASEMENT	U.E.	= UTILITY EASEMENT
I.E.	= IRRIGATION EASEMENT	E.A.E.	= EMERGENCY ACCESS EASEMENT
LB	= LICENSED SURVEY BUSINESS	(142)	= PROPOSED LOT NUMBER
L.E.	= LANDSCAPE EASEMENT	(274)	= EXISTING LOT NUMBER
L.M.E.	= LAKE MAINTENANCE EASEMENT		
(N.R.)	= NON RADIAL		
O.R.B.	= OFFICIAL RECORDS BOOK		



THIS INSTRUMENT PREPARED BY
PERRY C. WHITE, P.S.M. 4213,
STATE OF FLORIDA
SAND & HILLS SURVEYING, INC.
8461 LAKE WORTH ROAD, SUITE 410
LAKE WORTH, FLORIDA 33467 LB-7741

VERANO, P.U.D. NO. 1, PLAT NO. 22

BEING A REPLAT OF ALL OF TRACT "CA46", VERANO P.U.D. NO. 1, PLAT NO. 19, ACCORDING TO THE PLAT THEREOF AS RECORDED IN PLAT BOOK 76, PAGES 9 THROUGH 13 AND ALL OF TRACT "A", VERANO P.U.D. NO. 1, PLAT NO. 21, ACCORDING TO THE PLAT THEREOF AS RECORDED IN PLAT BOOK 84, PAGES 1 THROUGH 3 ALL OF THE PUBLIC RECORDS OF ST. LUCIE COUNTY, FLORIDA, TOGETHER WITH A PORTION OF UNPLATTED LANDS LYING WITHIN SECTIONS 28 AND 29, TOWNSHIP 36 SOUTH, RANGE 39 EAST OF ST. LUCIE COUNTY, FLORIDA, IN THE CITY OF PORT ST. LUCIE FLORIDA

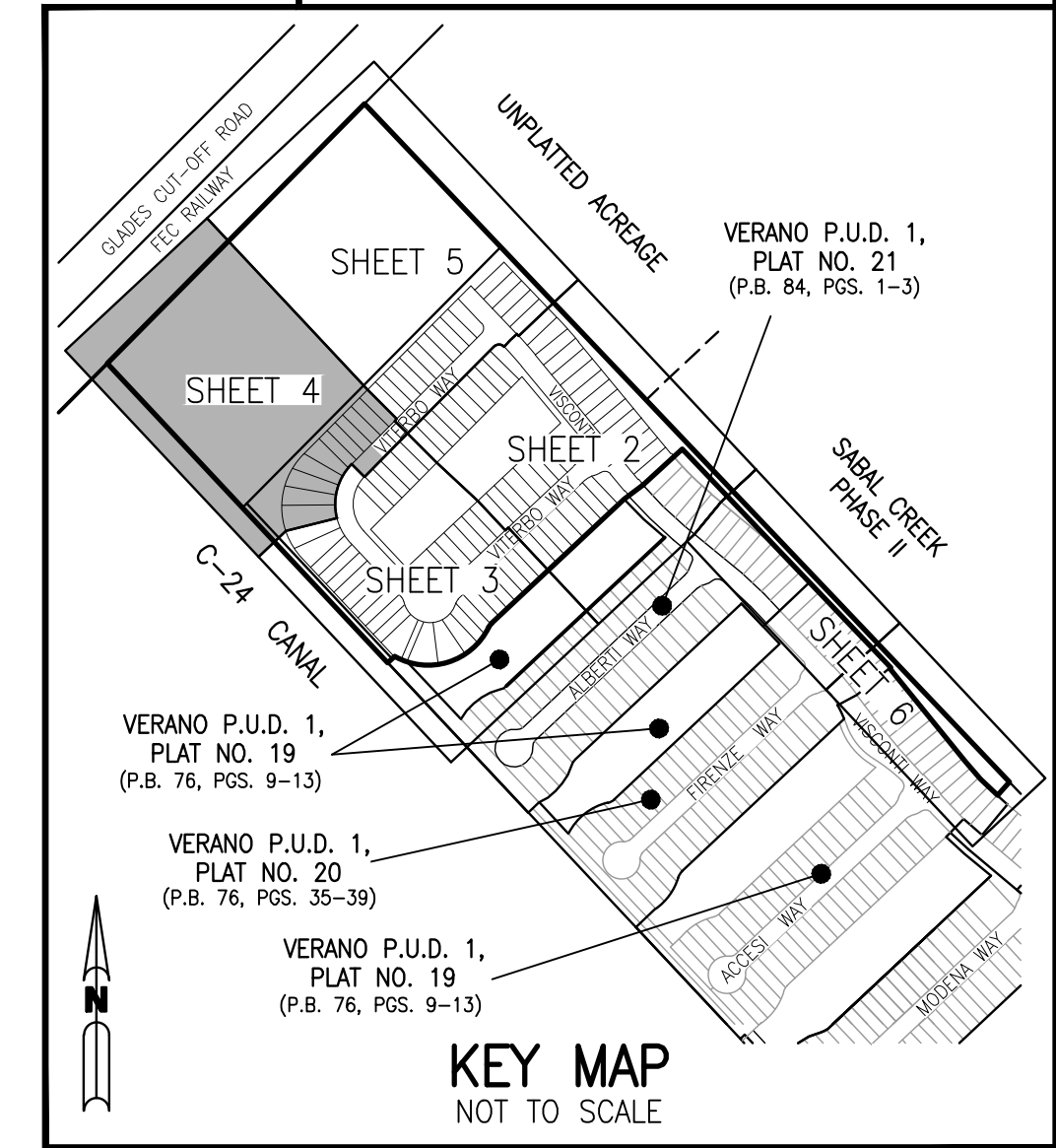
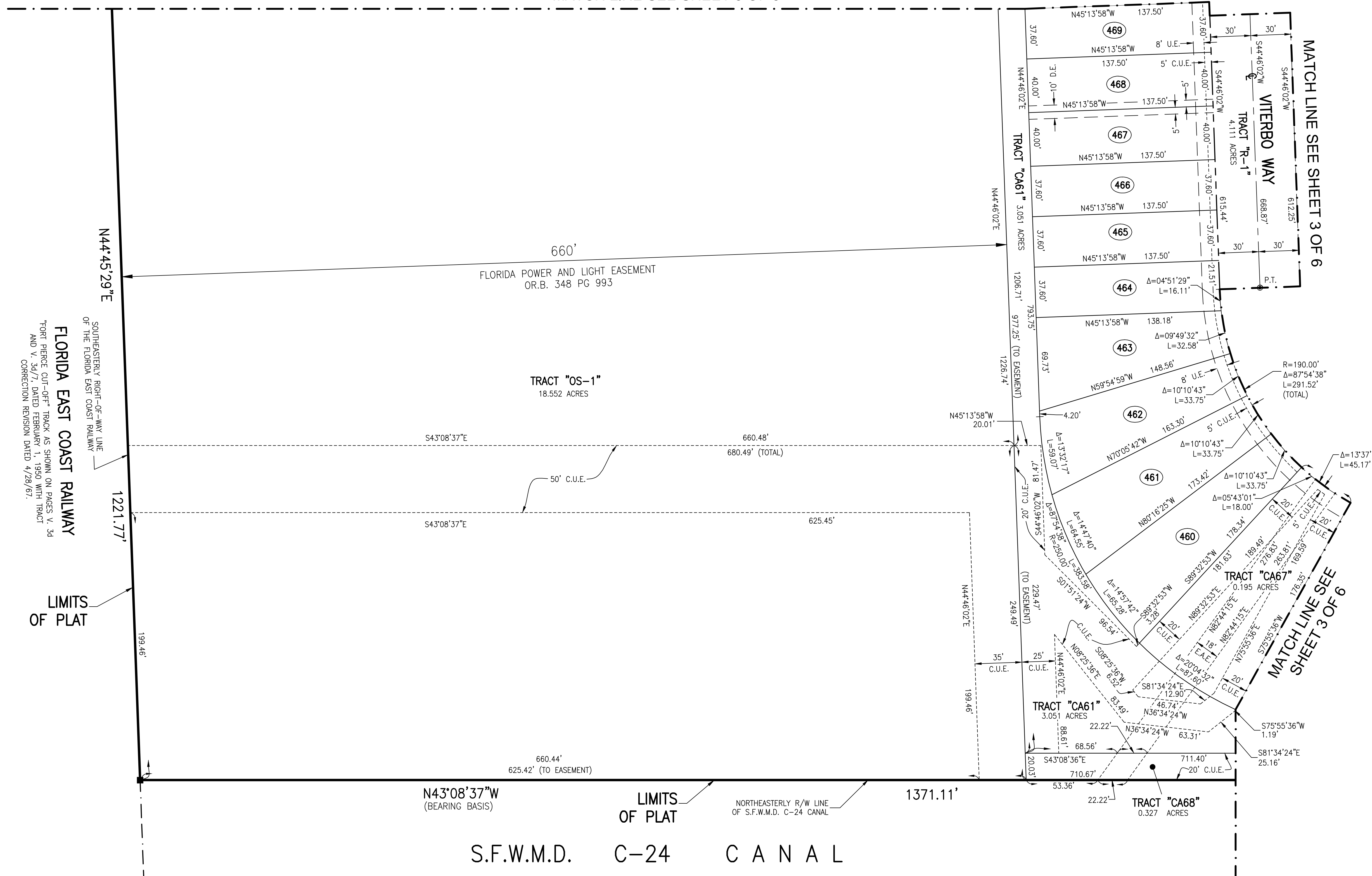


SHEET 4 OF 6

THIS INSTRUMENT PREPARED BY
 PERRY C. WHITE, P.S.M. 4213,
 STATE OF FLORIDA
 SAND & HILLS SURVEYING, INC.
 8461 LAKE WORTH ROAD, SUITE 410
 LAKE WORTH, FLORIDA 33467 LB-7741

PLAT BOOK	
PAGE	
FILE NO.	
DATE	
TIME	

MATCH LINE SEE SHEET 5 OF 6



- LEGEND:**
- = SET PERMANENT REFERENCE MONUMENT 5/8"
 - = IRON ROD WITH 1.5" CAP STAMPED L.B. #7741
 - = FOUND PERMANENT REFERENCE MONUMENT PRM LB 7062
 - = PERMANENT CONTROL POINT LB 7062
 - Δ = DELTA ANGLE
 - L = ARC LENGTH
 - R = RADIUS
 - (C) = CENTERLINE
 - E.A.E. = EMERGENCY ACCESS EASEMENT
 - B.E. = BRIDLE PATH EASEMENT
 - CB = CHORD BEARING
 - CH = CHORD DISTANCE
 - C.U.E. = CITY UTILITY EASEMENT
 - D.E. = DRAINAGE EASEMENT
 - I.E. = IRRIGATION EASEMENT
 - LB = LICENSED SURVEY BUSINESS
 - L.E. = LANDSCAPE EASEMENT
 - L.M.E. = LAKE MAINTENANCE EASEMENT
 - (N.R.) = NON RADIAL
 - O.R.B. = OFFICIAL RECORDS BOOK
 - P.B. = PLAT BOOK
 - P.C. = POINT OF CURVATURE
 - PG. = PAGE
 - P.I. = POINT OF INTERSECTION
 - P.O.B. = POINT OF BEGINNING
 - PRM = PERMANENT REFERENCE MONUMENT
 - P.T. = POINT OF TANGENCY
 - RP = RADIUS POINT
 - (RAD.) = RADIAL
 - R.W.E. = REUSE WATER EASEMENT
 - R/W = RIGHT-OF-WAY
 - SEC. = SECTION
 - S.F.W.M.D. = SOUTH FLORIDA WATER MANAGEMENT DISTRICT
 - U.E. = UTILITY EASEMENT
 - E.A.E. = EMERGENCY ACCESS EASEMENT
 - (142) = PROPOSED LOT NUMBER
 - (274) = EXISTING LOT NUMBER

SOUTHEASTERLY RIGHT-OF-WAY LINE
 OF THE FLORIDA EAST COAST RAILWAY
 FLORIDA EAST COAST RAILWAY
 "FORT PERCE CUT-OFF" TRACK AS SHOWN ON PAGES V, 3d
 AND V, 3d/7, DATED FEBRUARY 1, 1950 WITH TRACT
 CORRECTION REVISION DATED 4/28/67.

MATCH LINE SEE
 SHEET 3 OF 6

MATCH LINE SEE SHEET 3 OF 6

LIMITS
OF PLAT

LIMITS
OF PLAT

S.F.W.M.D. C-24 CANAL

VERANO, P.U.D. NO. 1, PLAT NO. 22

BEING A REPLAT OF ALL OF TRACT "CA46", VERANO P.U.D. NO. 1, PLAT NO. 19, ACCORDING TO THE PLAT THEREOF AS RECORDED IN PLAT BOOK 76, PAGES 9 THROUGH 13 AND ALL OF TRACT "A", VERANO P.U.D. NO. 1, PLAT NO. 21, ACCORDING TO THE PLAT THEREOF AS RECORDED IN PLAT BOOK 84, PAGES 1 THROUGH 3 ALL OF THE PUBLIC RECORDS OF ST. LUCIE COUNTY, FLORIDA, TOGETHER WITH A PORTION OF UNPLATTED LANDS LYING WITHIN SECTIONS 28 AND 29, TOWNSHIP 36 SOUTH, RANGE 39 EAST OF ST. LUCIE COUNTY, FLORIDA, IN THE CITY OF PORT ST. LUCIE FLORIDA

SHEET 5 OF 6

THIS INSTRUMENT PREPARED BY
PERRY C. WHITE, P.S.M. 4213,
STATE OF FLORIDA
SAND & HILLS SURVEYING, INC.
8461 LAKE WORTH ROAD, SUITE 410
LAKE WORTH, FLORIDA 33467 LB-7741

UNPLATTED ACREAGE

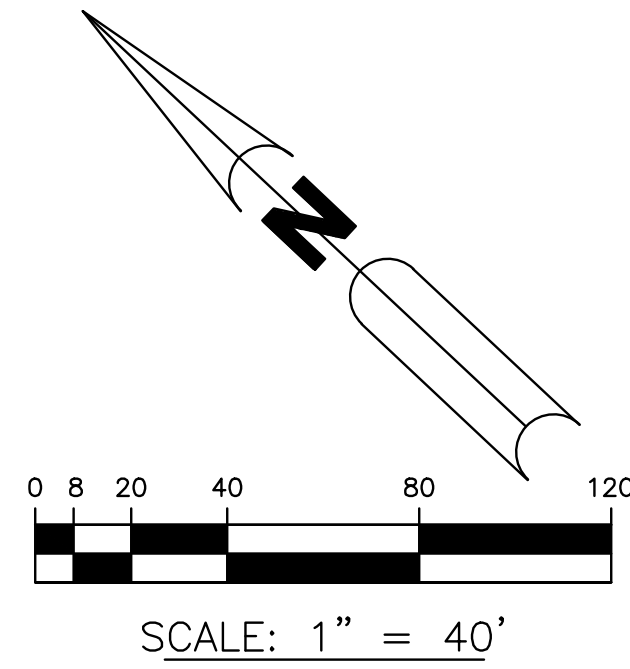
UNPLATTED ACREAGE

LIMITS OF PLAT

MATCH LINE SEE SHEET 2 OF 6

NORTHWESTERLY PROLONGATION OF THE
SOUTHWESTERLY LINE OF SABAL CREEK,
PHASE II (P.B. 24, PGS. 1, 1A-1C)

WEST LINE OF SECTION 28-36-39
EAST LINE OF SECTION 29-36-39



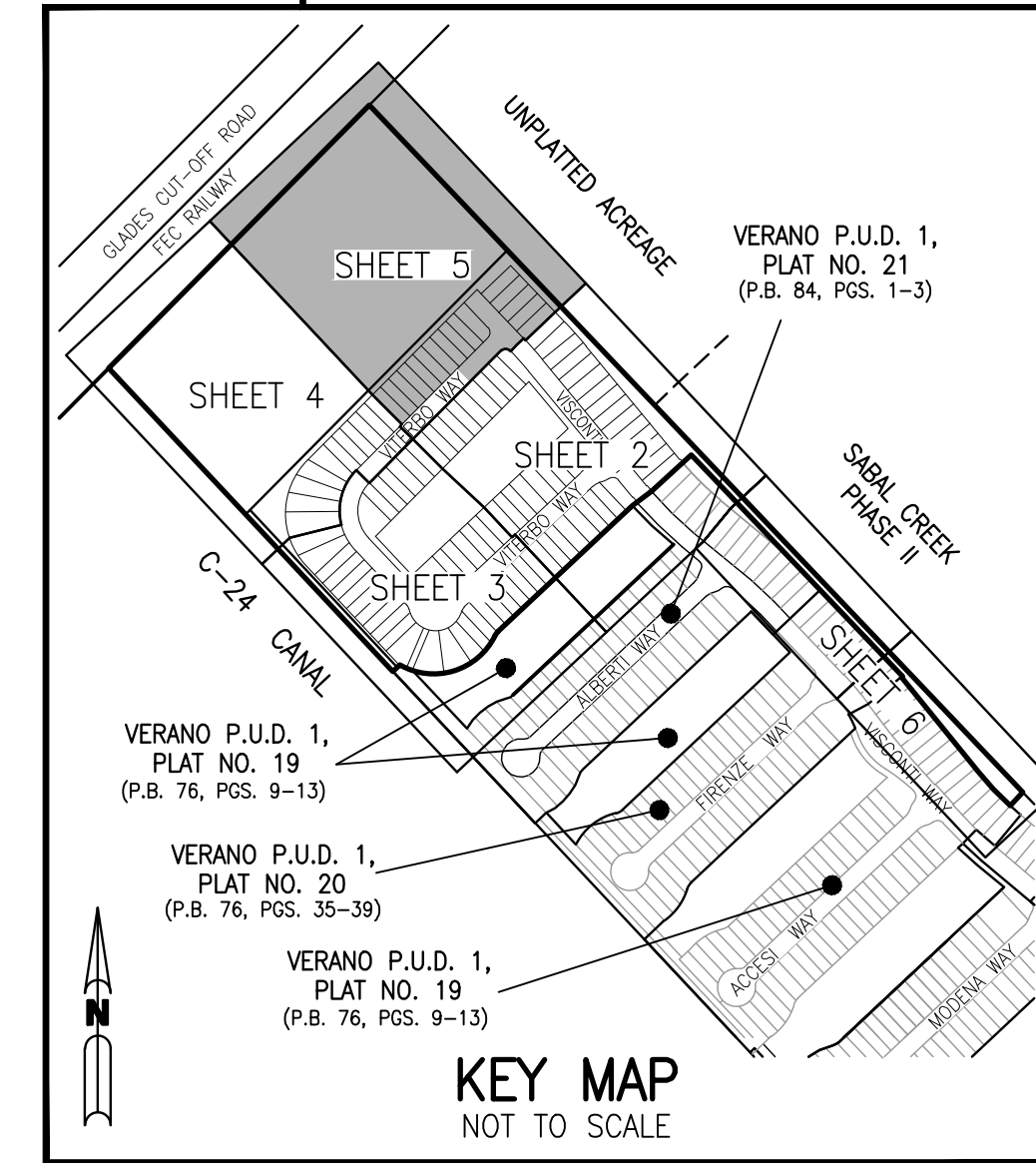
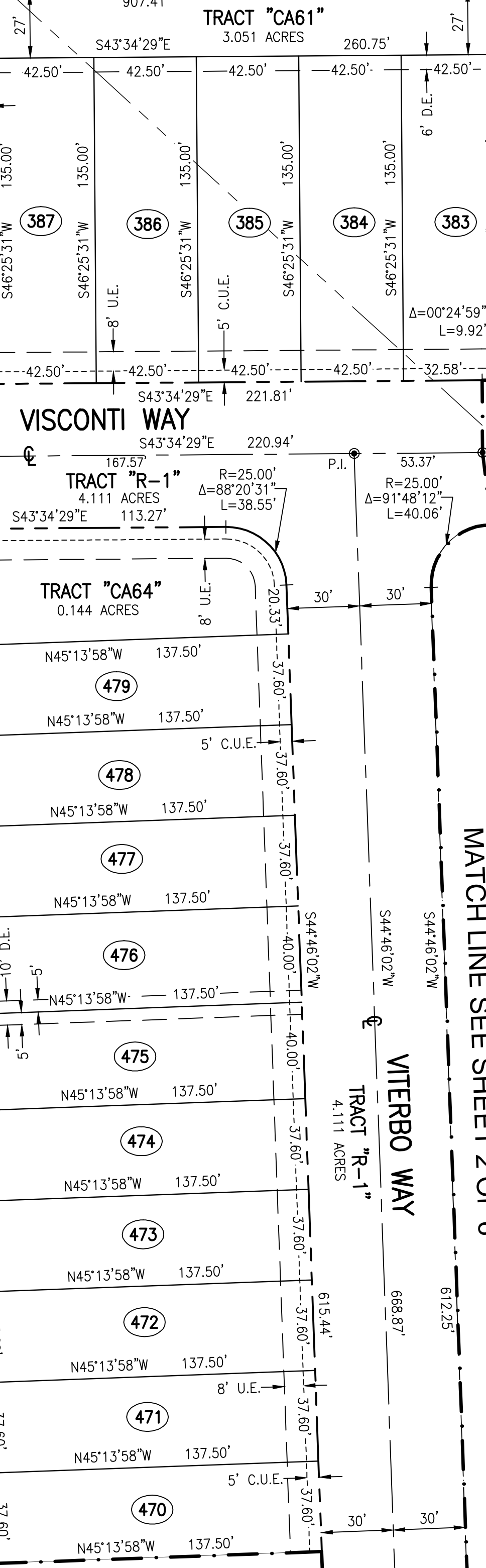
N44°45'29"E
SOUTHEASTERLY RIGHT-OF-WAY LINE
OF THE FLORIDA EAST COAST RAILWAY
1221.77'
LIMITS OF PLAT

FLORIDA EAST COAST RAILWAY
"PORT PIERCE CUT-OFF" TRACK AS SHOWN ON PAGES V, 3d
AND V, 3d/7, DATED FEBRUARY 11, 1950 WITH TRACT
CORRECTION REVISION DATED 4/28/67.

TRACT "OS-1"
18.552 ACRES

FLORIDA POWER AND LIGHT EASEMENT
OR.B. 348 PG 993

MATCH LINE SEE SHEET 4 OF 6



- LEGEND:**
- = SET PERMANENT REFERENCE MONUMENT 5/8"
 - = FOUND PERMANENT REFERENCE MONUMENT PRM LB 7062
 - = PERMANENT CONTROL POINT LB 7062
 - Δ = DELTA ANGLE
 - ⌒ = ARC LENGTH
 - R = RADIUS
 - C.L. = CENTERLINE
 - E.A.E. = EMERGENCY ACCESS EASEMENT
 - B.E. = BRIDLE PATH EASEMENT
 - CB = CHORD BEARING
 - CH = CHORD DISTANCE
 - C.U.E. = CITY UTILITY EASEMENT
 - D.E. = DRAINAGE EASEMENT
 - I.E. = IRRIGATION EASEMENT
 - LB = LICENSED SURVEY BUSINESS
 - L.E. = LANDSCAPE EASEMENT
 - L.M.E. = LAKE MAINTENANCE EASEMENT
 - (N.R.) = NON RADIAL
 - O.R.B. = OFFICIAL RECORDS BOOK
 - P.B. = PLAT BOOK
 - P.C. = POINT OF CURVATURE
 - P.G. = PAGE
 - P.I. = POINT OF INTERSECTION
 - P.O.B. = POINT OF BEGINNING
 - PRM = PERMANENT REFERENCE MONUMENT
 - P.T. = POINT OF TANGENCY
 - RP = RADIUS POINT
 - (RAD.) = RADIAL
 - R.W.E. = REUSE WATER EASEMENT
 - R/W = RIGHT-OF-WAY
 - SEC. = SECTION
 - S.F.W.M.D. = SOUTH FLORIDA WATER MANAGEMENT DISTRICT
 - U.E. = UTILITY EASEMENT
 - E.A.E. = EMERGENCY ACCESS EASEMENT
 - (142) = PROPOSED LOT NUMBER
 - (274) = EXISTING LOT NUMBER

PLAT BOOK	
PAGE	
FILE NO.	
DATE	
TIME	

VERANO, P.U.D. NO. 1, PLAT NO. 22

BEING A REPLAT OF ALL OF TRACT "CA46", VERANO P.U.D. NO. 1, PLAT NO. 19, ACCORDING TO THE PLAT THEREOF AS RECORDED IN PLAT BOOK 76, PAGES 9 THROUGH 13 AND ALL OF TRACT "A", VERANO P.U.D. NO. 1, PLAT NO. 21, ACCORDING TO THE PLAT THEREOF AS RECORDED IN PLAT BOOK 84, PAGES 1 THROUGH 3 ALL OF THE PUBLIC RECORDS OF ST. LUCIE COUNTY, FLORIDA, TOGETHER WITH A PORTION OF UNPLATTED LANDS LYING WITHIN SECTIONS 28 AND 29, TOWNSHIP 36 SOUTH, RANGE 39 EAST OF ST. LUCIE COUNTY, FLORIDA, IN THE CITY OF PORT ST. LUCIE FLORIDA

SHEET 6 OF 6

THIS INSTRUMENT PREPARED BY
 PERRY C. WHITE, P.S.M. 4213,
 STATE OF FLORIDA
 SAND & HILLS SURVEYING, INC.
 8461 LAKE WORTH ROAD, SUITE 410
 LAKE WORTH, FLORIDA 33467 LB-7741

PLAT BOOK	
PAGE	
FILE NO.	
DATE	
TIME	

- LEGEND:**
- = SET PERMANENT REFERENCE MONUMENT 5/8"
 - = IRON ROAD WITH 1.5" CAP STAMPED L.B. #7741
 - = FOUND PERMANENT REFERENCE MONUMENT FRM LB 7062
 - = PERMANENT CONTROL POINT LB 7062
 - Δ = DELTA ANGLE
 - L = ARC LENGTH
 - R = RADIUS
 - ⊙ = CENTERLINE
 - E.A.E. = EMERGENCY ACCESS EASEMENT
 - B.E. = BRIDLE PATH EASEMENT
 - CB = CHORD BEARING
 - CH = CHORD DISTANCE
 - C.U.E. = CITY UTILITY EASEMENT
 - D.E. = DRAINAGE EASEMENT
 - I.E. = IRRIGATION EASEMENT
 - LB = LICENSED SURVEY BUSINESS
 - L.E. = LANDSCAPE EASEMENT
 - L.M.E. = LAKE MAINTENANCE EASEMENT
 - (N.R.) = NON RADIAL
 - O.R.B. = OFFICIAL RECORDS BOOK
 - P.B. = PLAT BOOK
 - P.C. = POINT OF CURVATURE
 - PG. = PAGE
 - P.I. = POINT OF INTERSECTION
 - P.O.B. = POINT OF BEGINNING
 - PRM = PERMANENT REFERENCE MONUMENT
 - P.T. = POINT OF TANGENCY
 - RP = RADIUS POINT
 - (RAD.) = RADIAL
 - R.W.E. = REUSE WATER EASEMENT
 - R/W = RIGHT-OF-WAY
 - SEC. = SECTION
 - S.F.W.M.D. = SOUTH FLORIDA WATER MANAGEMENT DISTRICT
 - U.E. = UTILITY EASEMENT
 - E.A.E. = EMERGENCY ACCESS EASEMENT
 - 142 = PROPOSED LOT NUMBER
 - 274 = EXISTING LOT NUMBER

