

Mattamy at Southern Grove Plat 1 Replat

PRELIMINARY AND FINAL SUBDIVISION PLAT
APPLICATION WITH CONSTRUCTION PLANS

(P20-127)

City Council Meeting October 26, 2020

INCORPORATED

CityofPSL.com



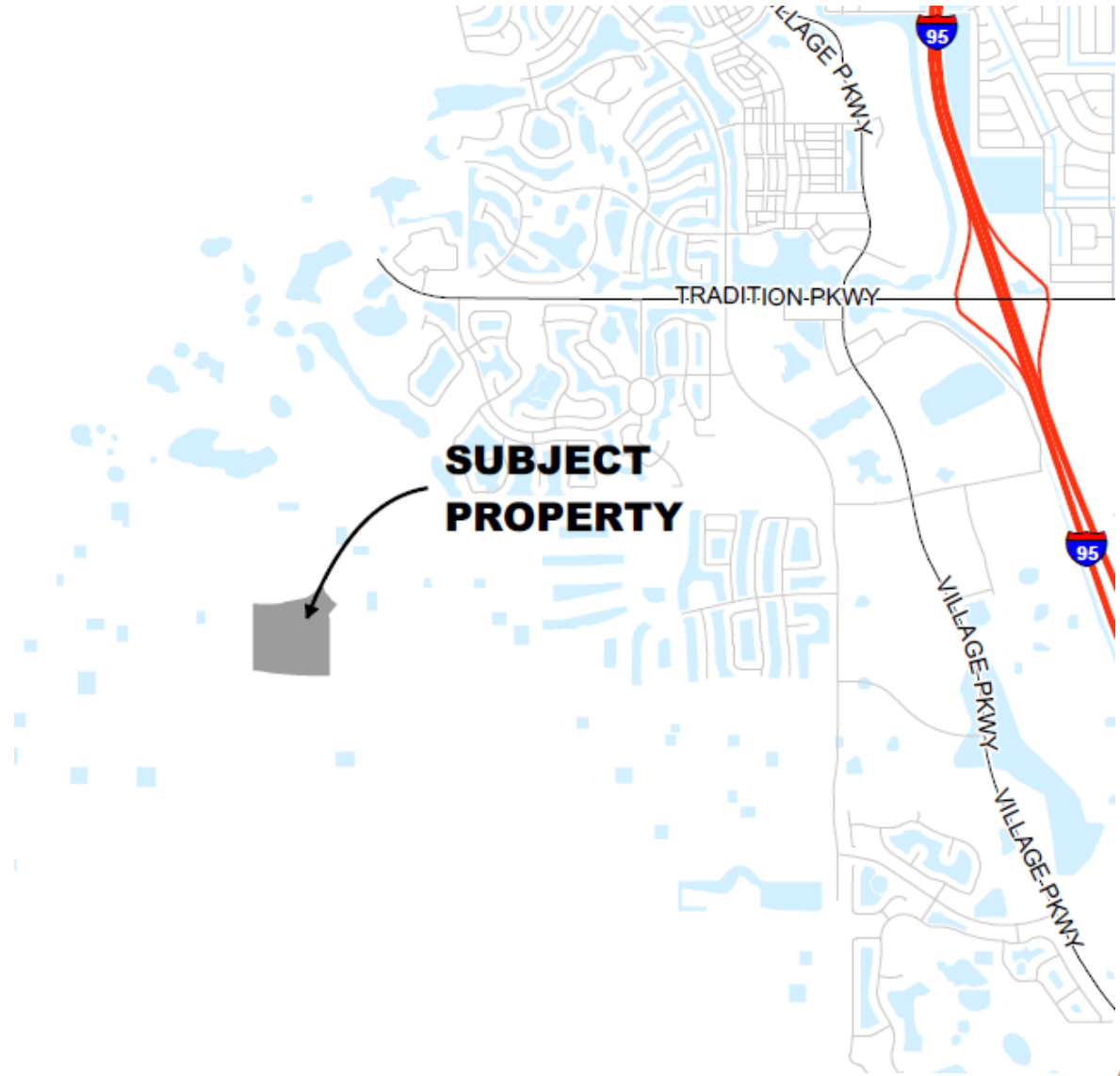
Requested Application:

This 18.39 acre preliminary and final subdivision plat is proposed to create:

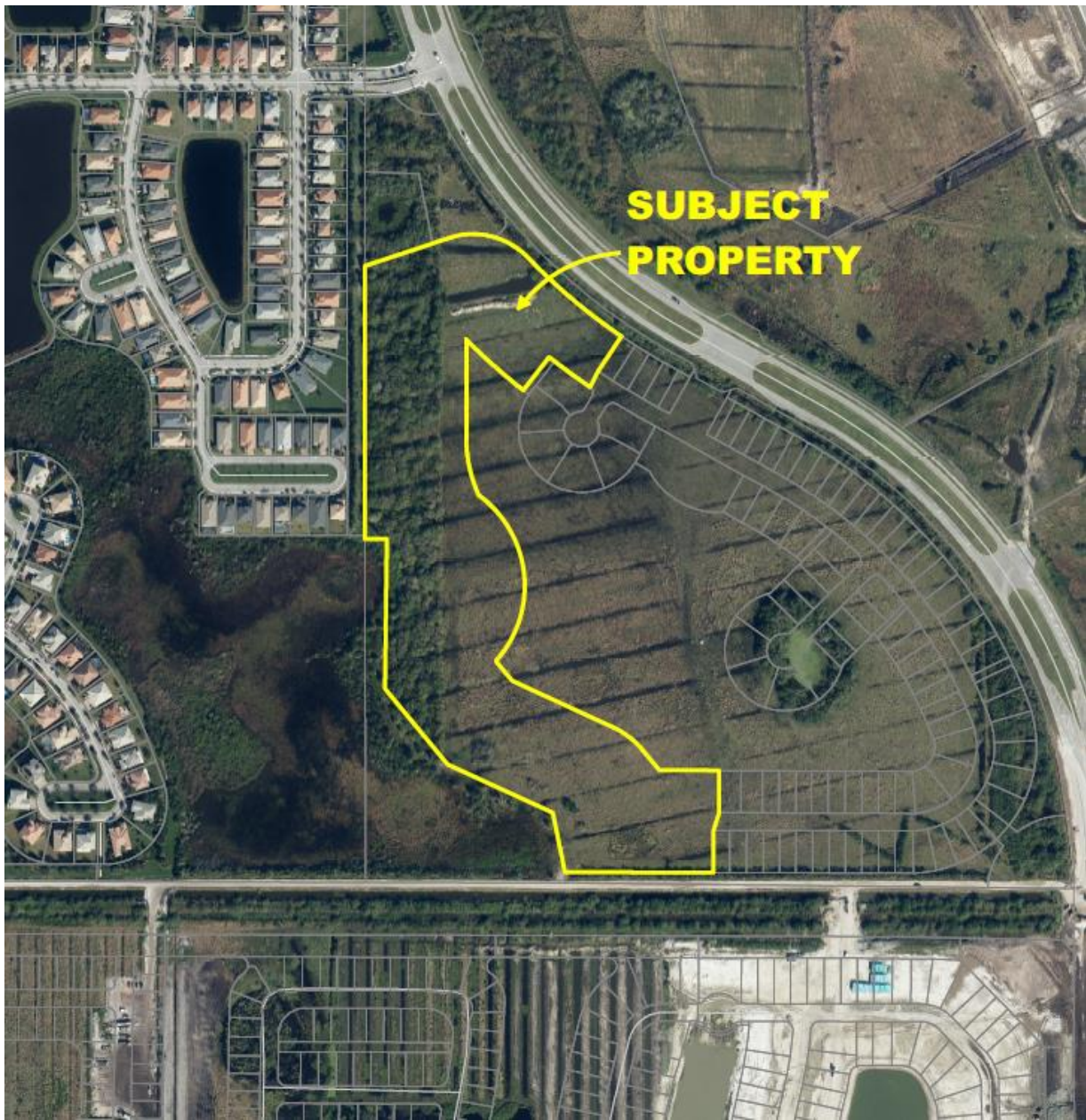
- 83 single family lots
- A water management tracts
- Open space tracts
- Private road right-of-way.



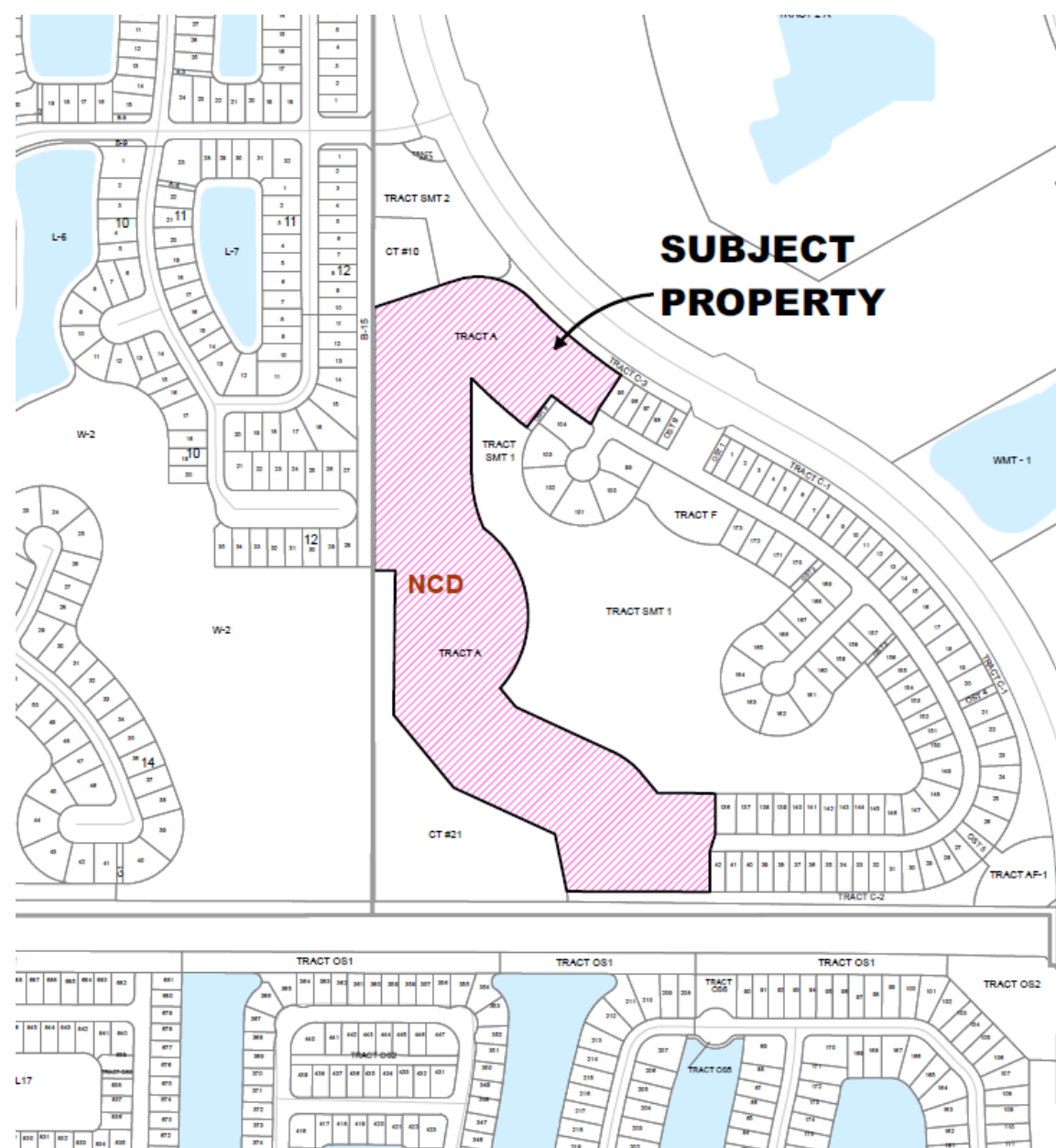
Subject property



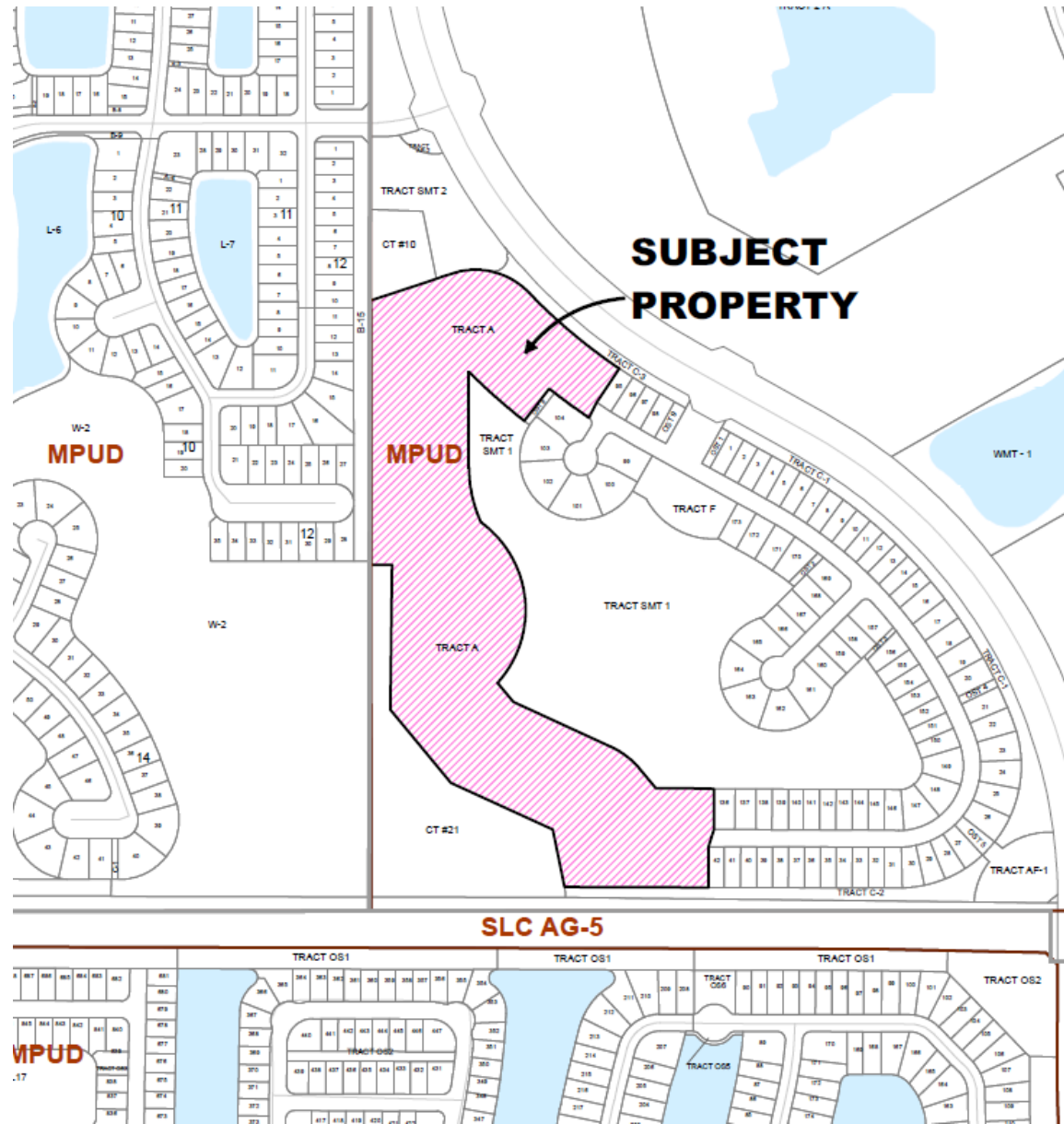
Aerial



Land Use



Zoning



Concurrency Review

The project has been reviewed for compliance with the Southern Grove DRI development order regarding the provision of adequate public facilities.



Recommendation

Site Plan Review Committee recommended approval at their meeting of August 12, 2020.

