

RIVERLAND PARCEL D - PLAT TWO

A PARCEL OF LAND LYING IN SECTION 20, TOWNSHIP 37 SOUTH, RANGE 39 EAST, CITY OF PORT ST. LUCIE, ST. LUCIE COUNTY, FLORIDA.

SHEET 1 OF 10

LEGAL DESCRIPTION:

A PARCEL OF LAND LYING IN SECTION 20, TOWNSHIP 37 SOUTH, RANGE 39 EAST, CITY OF PORT ST. BEING A PARCEL OF LAND LYING WITHIN SECTION 20, TOWNSHIP 37 SOUTH, RANGE 39 EAST, CITY OF PORT ST. LUCIE, ST. LUCIE COUNTY, FLORIDA AND BEING MORE PARTICULARLY DESCRIBED AS FOLLOWS:

BEGIN AT THE SOUTHEAST CORNER OF TRACT "0S1", RIVERLAND PARCEL D - PLAT ONE, AS RECORDED IN PLAT BOOK 118, PAGE 1, PUBLIC RECORDS OF ST. LUCIE COUNTY, FLORIDA; THENCE SOUTH 00°28'42" EAST, ALONG THE WEST LINE OF RIVERLAND BOULEVARD AT RIVERLAND PARCEL D, AS RECORDED IN PLAT BOOK 117, PAGE 24, SAID PUBLIC RECORDS, A DISTANCE OF 1335.32 FEET; THENCE ALONG THE WEST LINE OF N/S B RIGHT-OF-WAY, AS RECORDED IN OFFICIAL RECORDS BOOK 3902, PAGE 490, SAID PUBLIC RECORDS, SOUTH 44°49'26" WEST, A DISTANCE OF 49.76 FEET; THENCE ALONG THE NORTH LINE OF EW #3 RIGHT-OF-WAY, AS RECORDED IN OFFICIAL RECORDS BOOK 2972, PAGE 802, SAID PUBLIC RECORDS, NORTH 89°52'25" WEST, A DISTANCE OF 1510.60 FEET; THENCE ALONG THE BOUNDARY OF SAID RIVERLAND PARCEL D - PLAT ONE, FOR THE FOLLOWING EIGHTEEN (18) DESCRIBED COURSES, NORTH 00°07'35" EAST, A DISTANCE OF 358.98 FEET TO THE POINT OF CURVATURE OF A CURVE, CONCAVE EASTERLY, HAVING A RADIUS OF 1190.00 FEET, A CENTRAL ANGLE OF 08°59'01"; THENCE NORTHERLY ALONG THE ARC OF SAID CURVE TO THE RIGHT, A DISTANCE OF 186.58 FEET TO A POINT OF TANGENCY; THENCE NORTH 09°06'36" EAST, A DISTANCE OF 459.30 FEET TO THE POINT OF CURVATURE OF A CURVE, CONCAVE WESTERLY, HAVING A RADIUS OF 1849.00 FEET, A CENTRAL ANGLE OF 04°59'24"; THENCE NORTHERLY ALONG THE ARC OF SAID CURVE TO THE LEFT, A DISTANCE OF 161.04 FEET TO A POINT OF TANGENCY; THENCE NORTH 04°07'12" EAST, A DISTANCE OF 341.12 FEET TO THE POINT OF CURVATURE OF A CURVE, CONCAVE WESTERLY, HAVING A RADIUS OF 2849.00 FEET, A CENTRAL ANGLE OF 03°08'21"; THENCE NORTHERLY ALONG THE ARC OF SAID CURVE TO THE LEFT, A DISTANCE OF 156.09 FEET TO THE POINT OF INTERSECTION WITH A NON-RADIAL LINE; THENCE SOUTH 89°58'42" EAST, A DISTANCE OF 126.02 FEET; THENCE SOUTH 89°03'35" EAST, A DISTANCE OF 50.00 FEET TO THE POINT OF RADIAL INTERSECTION WITH A CURVE, CONCAVE WESTERLY, HAVING A RADIUS OF 3025.00 FEET AND A CENTRAL ANGLE OF 00°13'11"; THENCE SOUTHERLY ALONG THE ARC OF SAID CURVE TO THE RIGHT, A DISTANCE OF 11.60 FEET TO A POINT OF TANGENCY; THENCE SOUTH 85°52'48" EAST, A DISTANCE OF 134.79 FEET TO THE POINT OF NON-RADIAL INTERSECTION WITH A CURVE, CONCAVE EASTERLY, HAVING A RADIAL BEARING OF SOUTH 53°11'53" EAST, A RADIUS OF 30.00 FEET AND A CENTRAL ANGLE OF 32°40'56"; THENCE SOUTHERLY ALONG THE ARC OF SAID CURVE TO THE LEFT, A DISTANCE OF 17.11 FEET TO A POINT OF TANGENCY; THENCE SOUTH 04°07'12" WEST, A DISTANCE OF 144.76 FEET TO THE POINT OF CURVATURE OF A CURVE, CONCAVE SOUTHWESTERLY, HAVING A RADIUS OF 3000 FEET, A CENTRAL ANGLE OF 92°52'26"; THENCE SOUTHEASTERLY ALONG THE ARC OF SAID CURVE TO THE LEFT, A DISTANCE OF 48.63 FEET TO A POINT OF TANGENCY; THENCE SOUTH 89°45'14" EAST, A DISTANCE OF 164.37 FEET TO THE POINT OF CURVATURE OF A CURVE, CONCAVE NORTHERLY, HAVING A RADIUS OF 4849.00 FEET, A CENTRAL ANGLE OF 01°13'28"; THENCE EASTERLY ALONG THE ARC OF SAID CURVE TO THE LEFT, A DISTANCE OF 103.64 FEET TO A POINT OF TANGENCY; THENCE SOUTH 89°58'42" EAST, A DISTANCE OF 478.45 FEET TO THE POINT OF CURVATURE OF A CURVE, CONCAVE SOUTHWESTERLY, HAVING A RADIUS OF 250.00 FEET, A CENTRAL ANGLE OF 47°33'40"; THENCE SOUTHEASTERLY ALONG THE ARC OF SAID CURVE TO THE RIGHT, A DISTANCE OF 207.53 FEET TO THE POINT OF REVERSE CURVATURE OF A CURVE, CONCAVE NORTHERLY, HAVING A RADIUS OF 35.00 FEET, A CENTRAL ANGLE OF 119°51'59"; THENCE EASTERLY ALONG THE ARC OF SAID CURVE TO THE LEFT, A DISTANCE OF 73.22 FEET TO THE POINT OF INTERSECTION WITH A NON-RADIAL LINE; THENCE NORTH 89°31'18" EAST, A DISTANCE OF 84.75 FEET TO THE POINT OF BEGINNING.

CONTAINING 50.241 ACRES, MORE OR LESS.

CERTIFICATION OF OWNERSHIP & DEDICATION

STATE OF FLORIDA
COUNTY OF BROWARD

RIVERLAND ASSOCIATES IV, LLLP, A FLORIDA LIMITED LIABILITY LIMITED PARTNERSHIP, OWNER OF THE LAND DESCRIBED AND PLATTED HEREIN AS RIVERLAND PARCEL D - PLAT TWO, BEING IN ST. LUCIE COUNTY, FLORIDA, HAS CAUSED SAID LANDS TO BE SURVEYED AND PLATTED AS SHOWN HEREON AND HEREBY DEDICATES AS FOLLOWS:

1) THE PRIVATE ROAD RIGHTS OF WAY AS SHOWN HEREON (TRACT A), IS HEREBY DEDICATED TO THE RIVERLAND PARCEL D HOMEOWNERS ASSOCIATION, INC., ITS SUCCESSORS AND ASSIGNS FOR INGRESS, EGRESS AND UNDERGROUND UTILITIES PURPOSES AND ARE THE PERPETUAL MAINTENANCE OBLIGATION OF SAID ASSOCIATION, ITS SUCCESSORS AND ASSIGNS. AN EASEMENT OVER AND UNDER SAID PRIVATE ROAD RIGHTS OF WAY, AS SHOWN HEREON, IS ALSO RESERVED IN FAVOR OF THE CITY OF PORT ST. LUCIE, ITS SUCCESSORS AND ASSIGNS FOR CITY OF PORT ST. LUCIE SERVICE AND EMERGENCY VEHICLES AND FOR ACCESS TO, AND INSTALLATION AND MAINTENANCE OF, PUBLIC UTILITY FACILITIES, INCLUDING, BUT NOT LIMITED TO, WATER AND WASTEWATER LINES AND APPURTENANT FACILITIES. THE CITY OF PORT ST. LUCIE SHALL NOT BE RESPONSIBLE FOR ANY MAINTENANCE OBLIGATIONS FOR SAID PRIVATE ROAD RIGHTS OF WAY EXCEPT AS SHALL RELATE TO THE SERVICING OF SUCH PUBLIC UTILITIES BY THE CITY OF PORT ST. LUCIE.

2) THE DRAINAGE EASEMENTS (D.E.) AS SHOWN HEREON ARE HEREBY DEDICATED TO THE RIVERLAND PARCEL D HOMEOWNERS ASSOCIATION, INC., ITS SUCCESSORS AND ASSIGNS, FOR DRAINAGE PURPOSES AND THEY ARE THE MAINTENANCE OBLIGATION OF SAID ASSOCIATION, ITS SUCCESSORS AND ASSIGNS. SAID DRAINAGE EASEMENTS MAY ALSO BE USED BY THE CITY OF PORT ST. LUCIE, ITS SUCCESSORS AND ASSIGNS, FOR DRAINAGE, MAINTENANCE ACTIVITIES AND STORMWATER MANAGEMENT PURPOSES FOR DRAINAGE FROM COMMUNITY BOULEVARD AND RIVERLAND BOULEVARD, IN ACCORDANCE WITH THE DRAINAGE OR SURFACE WATER MANAGEMENT PERMITS ISSUED FROM TIME TO TIME FOR THE LANDS SUBJECT TO THIS PLAT.

3) THE WATER MANAGEMENT TRACTS L5 THROUGH L7, AS SHOWN HEREON ARE DEDICATED TO THE RIVERLAND PARCEL D HOMEOWNERS ASSOCIATION, INC., ITS SUCCESSORS AND ASSIGNS, FOR THE PURPOSE OF SURFACE WATER MANAGEMENT. SAID WATER MANAGEMENT TRACT MAY ALSO BE USED BY THE CITY OF PORT ST. LUCIE, ITS SUCCESSORS AND ASSIGNS, FOR DRAINAGE, MAINTENANCE ACTIVITIES AND STORMWATER MANAGEMENT PURPOSES FOR DRAINAGE FROM SW MARSHALL PARKWAY (E/W #3) AND RIVERLAND BOULEVARD, IN ACCORDANCE WITH THE DRAINAGE OR SURFACE WATER MANAGEMENT PERMITS ISSUED FROM TIME TO TIME FOR THE LANDS SUBJECT TO THIS PLAT.

CERTIFICATION OF OWNERSHIP & DEDICATION (CONTINUED)

4) THE LAKE MAINTENANCE EASEMENTS (L.M.E.) AND LAKE MAINTENANCE ACCESS EASEMENTS (L.M.A.E.), AS SHOWN HEREON, ARE HEREBY DEDICATED TO THE RIVERLAND PARCEL D HOMEOWNERS ASSOCIATION, INC., ITS SUCCESSORS AND ASSIGNS, AND ARE THE PERPETUAL MAINTENANCE OBLIGATIONS OF SAID ASSOCIATION, ITS SUCCESSORS AND ASSIGNS.

5) THE OPEN SPACE TRACTS OS1 THROUGH OS4, AS SHOWN HEREON, ARE HEREBY DEDICATED TO THE RIVERLAND PARCEL D HOMEOWNERS ASSOCIATION, INC., ITS SUCCESSORS AND ASSIGNS, FOR OPEN SPACE, UTILITY, DRAINAGE FACILITIES, PEDESTRIAN ACCESS, AND GOLF CART AND SIMILAR SIZED NEIGHBORHOOD ELECTRIC VEHICLE PURPOSES AND ARE THE PERPETUAL MAINTENANCE OBLIGATION OF SAID ASSOCIATION, ITS SUCCESSORS AND ASSIGNS.

6) THE CITY OF PORT ST. LUCIE UTILITY EASEMENTS (P.S.L.U.E.) AS SHOWN HEREON ARE HEREBY DEDICATED TO THE CITY OF PORT ST. LUCIE ("CITY"), ITS SUCCESSORS, AGENTS, EMPLOYEES, CONTRACTORS, DESIGNERS AND ASSIGNS, A GENERAL INGRESS/EGRESS EASEMENT OVER AND ACROSS ITS DRIVEWAYS, PARKING, COMMON OR OPEN AREAS FOR ACCESS TO, OPERATION, MODIFICATIONS, INSTALLATION OF OR MAINTENANCE OF, PUBLIC UTILITIES FACILITIES, INCLUDING BUT NOT LIMITED TO, WATER AND WASTEWATER LINES, APPURTENANT FACILITIES, AND EQUIPMENT. THERE SHALL BE NO OTHER PUBLIC OR PRIVATE UTILITY FACILITIES INSTALLED IN, ON, OVER, UNDER, OR ACROSS THE EASEMENT AREA WITHOUT THE CITY'S WRITTEN PERMISSION. THERE SHALL BE NO IMPROVEMENTS OF ANY KIND INCLUDING, BUT NOT LIMITED TO, LANDSCAPING CONSTRUCTED WITHIN THE BOUNDARIES OF THE EASEMENT AREA WHICH WOULD RESTRICT THE OPERATION AND MAINTENANCE OF, OR WHICH MAY IN ANY MANNER RESULT IN HARM TO THE CITY'S FACILITIES. THE RIVERLAND PARCEL D HOMEOWNERS ASSOCIATION, INC., ITS SUCCESSORS OR ASSIGNS, SHALL MAINTAIN, REPAIR AND REPLACE ANY PERMITTED IMPROVEMENTS OVER THE UTILITY EASEMENT, WHICH ARE NOT PRECLUDED BY THE FOREGOING, WHICH MAY BE DAMAGED OR DESTROYED BY THE CITY, ITS SUCCESSORS OR ASSIGNS, DESIGNERS OR CONTRACTORS IN THE CONSTRUCTION, OPERATION, MAINTENANCE OF, OR ACCESS TO, THE CITY'S FACILITIES. THE CITY, ITS SUCCESSORS OR ASSIGNS, SHALL HAVE THE RIGHT TO REQUIRE THE REMOVAL OF ANY IMPROVEMENTS, WHICH ARE CONSTRUCTED IN VIOLATION OF THE CONDITIONS SET FORTH ABOVE. IF VIOLATING IMPROVEMENTS ARE NOT REMOVED UPON REQUEST, THE CITY, ITS SUCCESSORS OR ASSIGNS, DESIGNERS OR CONTRACTORS WILL REMOVE SAID IMPROVEMENTS WITHOUT LIABILITY, RESPONSIBILITY OR COST TO THE CITY. THE CITY OF PORT ST. LUCIE SHALL NOT BE RESPONSIBLE FOR ANY MAINTENANCE OBLIGATIONS FOR SAID EASEMENTS EXCEPT AS SHALL RELATE TO THE SERVICING OF SUCH PUBLIC UTILITIES BY THE CITY OF PORT ST. LUCIE.

7) THE UTILITY EASEMENTS (U.E.) AS SHOWN HEREON RUNNING ADJACENT AND PARALLEL TO THE TRACTS FOR PRIVATE ROAD PURPOSES ARE NON-EXCLUSIVE EASEMENTS AND ARE HEREBY DEDICATED FOR THE INSTALLATION, OPERATION, MAINTENANCE, REPAIR, EXPANSION AND REPLACEMENT OF UTILITIES, BOTH PUBLIC AND PRIVATE, INCLUDING, BUT NOT LIMITED TO, WATER AND WASTEWATER LINES, ELECTRICAL LINES, GAS LINES, AND TELECOMMUNICATION LINES, AND ALL RELATED FACILITIES AND APPURTENANCES. PURSUANT TO SECTION 177.091(28), FLORIDA STATUTES, THE UTILITY EASEMENTS SHALL ALSO BE USED FOR THE CONSTRUCTION, INSTALLATION, MAINTENANCE AND OPERATION OF CABLE TELEVISION SERVICES; PROVIDED, HOWEVER, NO SUCH CONSTRUCTION, INSTALLATION, MAINTENANCE, AND OPERATION OF CABLE TELEVISION SERVICES SHALL INTERFERE WITH THE FACILITIES AND SERVICES OF AN ELECTRIC, TELEPHONE, GAS, OR OTHER PUBLIC UTILITY. IN THE EVENT A CABLE TELEVISION COMPANY DAMAGES THE FACILITIES OF A PUBLIC UTILITY, IT SHALL BE SOLELY RESPONSIBLE FOR THE DAMAGES. THE DAMAGES SHALL NOT INCLUDE: THOSE PRIVATE EASEMENTS GRANTED TO OR OBTAINED BY A PARTICULAR ELECTRIC, TELEPHONE, GAS, OR OTHER PUBLIC UTILITY. SUCH CONSTRUCTION, INSTALLATION, MAINTENANCE, AND OPERATION SHALL COMPLY WITH THE NATIONAL ELECTRICAL SAFETY CODE AS ADOPTED BY THE FLORIDA PUBLIC SERVICE COMMISSION.

NOTWITHSTANDING THE ABOVE, LOCATED WITHIN ALL UTILITY EASEMENTS RUNNING ADJACENT AND PARALLEL TO FIFTY FOOT (50') WIDE TRACTS FOR PRIVATE ROAD PURPOSES, THERE IS HEREBY DESIGNATED WITHIN SUCH UTILITY EASEMENTS, A TWO FOOT (2') WIDE RESTRICTED AREA (U.E.-R.A.) LOCATED ADJACENT AND PARALLEL TO SUCH FIFTY FOOT (50') WIDE TRACTS. NO UTILITIES AND/OR RELATED FACILITIES AND APPURTENANCES PERMITTED TO BE INSTALLED IN THE UTILITY EASEMENTS AS PROVIDED HEREIN SHALL BE INSTALLED IN ANY PORTION OF SUCH RESTRICTED AREA WITHOUT THE PRIOR WRITTEN APPROVAL OF THE CITY OF PORT ST. LUCIE, ITS SUCCESSORS AND/OR ASSIGNS, EXCEPT ONLY TO CROSS SUCH RESTRICTED AREA.

THERE SHALL BE NO IMPROVEMENTS OF ANY KIND INCLUDING, BUT NOT LIMITED TO, TREES PLANTED WITHIN THE BOUNDARIES OF THE UTILITY EASEMENTS WHICH WOULD RESTRICT THE OPERATION AND MAINTENANCE OF, OR WHICH MAY IN ANY MANNER RESULT IN HARM TO, THE CITY OF PORT ST. LUCIE'S FACILITIES. THE RIVERLAND PARCEL D HOMEOWNERS ASSOCIATION, INC., THEIR SUCCESSORS AND ASSIGNS, SHALL MAINTAIN, REPAIR AND REPLACE ANY PERMITTED IMPROVEMENTS OVER THE UTILITY EASEMENTS, WHICH ARE NOT PRECLUDED BY THE FOREGOING, WHICH MAY BE DAMAGED OR DESTROYED BY THE CITY OF PORT ST. LUCIE, ITS SUCCESSORS AND/OR ASSIGNS, DESIGNERS OR CONTRACTORS IN THE OPERATION, MAINTENANCE OF, OR ACCESS TO THE CITY'S FACILITIES. THE CITY OF PORT ST. LUCIE, ITS SUCCESSORS AND/OR ASSIGNS, SHALL HAVE THE RIGHT TO REQUIRE THE REMOVAL OF ANY IMPROVEMENTS WHICH ARE CONSTRUCTED IN VIOLATION OF THE CONDITIONS SET FORTH ABOVE. IN THE EVENT SUCH VIOLATING IMPROVEMENTS ARE NOT REMOVED UPON REQUEST, THEY SHALL BE SUBJECT TO REMOVAL BY THE CITY OF PORT ST. LUCIE, ITS SUCCESSORS AND/OR ASSIGNS, DESIGNERS OR CONTRACTORS WITHOUT LIABILITY, RESPONSIBILITY OR COST TO THE CITY. THE CITY OF PORT ST. LUCIE SHALL NOT BE RESPONSIBLE FOR ANY MAINTENANCE OBLIGATIONS FOR SAID EASEMENTS EXCEPT AS SHALL RELATE TO THE SERVICING OF SUCH PUBLIC UTILITIES BY THE CITY OF PORT ST. LUCIE.

8) TRACT "WS" AS SHOWN HEREON, IS HEREBY DEDICATED TO THE CITY OF PORT SAINT LUCIE, ITS SUCCESSORS AND/OR ASSIGNS, FOR THE PERPETUAL USE FOR WATER SUPPLY WELL PURPOSES.

CERTIFICATION OF OWNERSHIP & DEDICATION (CONTINUED)

9) THE LANDSCAPE EASEMENTS (L.E.), AS SHOWN HEREON, ARE HEREBY DEDICATED TO THE RIVERLAND PARCEL D HOMEOWNERS ASSOCIATION, INC., ITS SUCCESSORS AND ASSIGNS, FOR LANDSCAPE, IRRIGATION AND DRAINAGE PURPOSES AND THEY ARE THE MAINTENANCE OBLIGATION OF SAID ASSOCIATION, ITS SUCCESSORS AND ASSIGNS.

10) THE DRAINAGE SWALE EASEMENTS (D.S.E.), AS SHOWN HEREON, ARE HEREBY DEDICATED TO THE RIVERLAND PARCEL D HOMEOWNERS ASSOCIATION, INC., ITS SUCCESSORS AND ASSIGNS, FOR DRAINAGE PURPOSES AND THEY ARE THE MAINTENANCE OBLIGATION OF SAID ASSOCIATION, ITS SUCCESSORS AND ASSIGNS.

IN WITNESS WHEREOF, THE ABOVE NAMED LIMITED LIABILITY LIMITED PARTNERSHIP HAS CAUSED THESE PRESENTS TO BE SIGNED BY ITS GENERAL PARTNER, RIVERLAND IV CORPORATION, A FLORIDA CORPORATION AND ITS CORPORATE SEAL TO BE AFFIXED HERETO, THIS ____ DAY OF _____, 2023.

RIVERLAND ASSOCIATES IV, LLLP, A FLORIDA LIMITED LIABILITY LIMITED PARTNERSHIP BY: RIVERLAND IV CORPORATION, A FLORIDA CORPORATION, ITS GENERAL PARTNER

BY: _____ DATE: _____
ALAN FANT, VICE PRESIDENT

WITNESS: _____ WITNESS: _____
PRINT NAME: _____ PRINT NAME: _____

ACKNOWLEDGMENT

STATE OF FLORIDA
COUNTY OF BROWARD

BEFORE ME, BY MEANS OF () PHYSICAL PRESENCE OR () ONLINE NOTARIZATION, ALAN FANT, WHO IS PERSONALLY KNOWN TO ME OR HAS PRODUCED _____ AS IDENTIFICATION, AND WHO EXECUTED THE FOREGOING INSTRUMENT AS VICE PRESIDENT OF RIVERLAND IV CORPORATION, AND SEVERALLY ACKNOWLEDGED TO AND BEFORE ME THAT HE EXECUTED SUCH INSTRUMENT AS SUCH OFFICER OF SAID CORPORATION, AND THAT THE SEAL AFFIXED TO THE FOREGOING INSTRUMENT IS THE CORPORATE SEAL OF SAID CORPORATION AND THAT IT WAS AFFIXED TO SAID INSTRUMENT BY DUE AND REGULAR CORPORATE AUTHORITY, AND THAT SAID INSTRUMENT IS THE FREE ACT AND DEED OF SAID CORPORATION. WITNESS MY HAND AND OFFICIAL SEAL THIS ____ DAY OF _____, 2023.

NOTARY PUBLIC: _____ COMMISSION NUMBER: _____

PRINT NAME: _____

MY COMMISSION EXPIRES: _____

ACCEPTANCE OF DEDICATION

STATE OF FLORIDA
COUNTY OF BROWARD

RIVERLAND PARCEL D HOMEOWNERS ASSOCIATION, INC., HEREBY:

1) ACCEPTS THE DEDICATIONS AND/OR THEIR OBLIGATIONS AS STATED HEREON, OF TRACT A, TRACTS L5, L6, AND L7, LAKE MAINTENANCE EASEMENTS, LAKE MAINTENANCE ACCESS EASEMENTS, DRAINAGE EASEMENTS, DRAINAGE SWALE EASEMENTS, LANDSCAPE EASEMENTS, UTILITY EASEMENTS, PORT ST. LUCIE UTILITY EASEMENTS, AND OPEN SPACE TRACTS OS1 THROUGH OS4, AS SET FORTH UPON THIS PLAT AND SPECIFICALLY DEDICATED TO RIVERLAND PARCEL D HOMEOWNERS ASSOCIATION, INC.,

2) CONSENTS TO THE PLATTING OF THE LANDS HEREIN.

DATED THIS ____ DAY OF _____, 2023.

CHARLES SAENZ, PRESIDENT

WITNESS: _____ WITNESS: _____

PRINT NAME: _____ PRINT NAME: _____

ACKNOWLEDGMENT

STATE OF FLORIDA
COUNTY OF BROWARD

BEFORE ME, BY MEANS OF () PHYSICAL PRESENCE OR () ONLINE NOTARIZATION, CHARLES SAENZ, WHO IS PERSONALLY KNOWN TO ME OR HAS PRODUCED _____ AS IDENTIFICATION, AND WHO EXECUTED THE FOREGOING INSTRUMENT AS PRESIDENT OF RIVERLAND PARCEL D HOMEOWNERS ASSOCIATION, INC., AND SEVERALLY ACKNOWLEDGED TO AND BEFORE ME THAT HE EXECUTED SUCH INSTRUMENT AS SUCH OFFICER OF SAID CORPORATION, AND THAT THE SEAL AFFIXED TO THE FOREGOING INSTRUMENT IS THE CORPORATE SEAL OF SAID CORPORATION AND THAT IT WAS AFFIXED TO SAID INSTRUMENT BY DUE AND REGULAR CORPORATE AUTHORITY, AND THAT SAID INSTRUMENT IS THE FREE ACT AND DEED OF SAID CORPORATION. WITNESS MY HAND AND OFFICIAL SEAL THIS ____ DAY OF _____, 2023.

NOTARY PUBLIC: _____

PRINT NAME: _____

MY COMMISSION EXPIRES: _____

COMMISSION NUMBER: _____

APPROVAL OF CITY COUNCIL

STATE OF FLORIDA
COUNTY OF ST. LUCIE

IT IS HEREBY CERTIFIED THAT THIS PLAT OF RIVERLAND PARCEL D - PLAT TWO, HAS BEEN OFFICIALLY APPROVED FOR RECORD BY THE CITY COUNCIL OF THE CITY OF PORT ST. LUCIE AND ALL DEDICATIONS TO THE CITY OF PORT ST. LUCIE HEREIN ARE ACCEPTED, THIS ____ DAY OF _____, 2023.

CITY OF PORT ST. LUCIE ATTEST:

SHANNON M. MARTIN, MAYOR SALLY WALSH, CITY CLERK

CLERK'S RECORDING CERTIFICATE

STATE OF FLORIDA
COUNTY OF ST. LUCIE

I MICHELLE R. MILLER, CLERK OF THE CIRCUIT COURT OF ST. LUCIE, FLORIDA, DO HEREBY CERTIFY THAT THIS PLAT HAS BEEN EXAMINED, AND THAT IT COMPLIES IN FORM WITH ALL THE REQUIREMENTS OF THE LAWS OF FLORIDA PERTAINING TO MAPS AND PLATS, AND THAT THIS PLAT HAS BEEN FILED FOR RECORD IN PLAT BOOK _____ PAGES _____ OF THE PUBLIC RECORDS OF ST. LUCIE COUNTY, FLORIDA, THIS ____ DAY OF _____, 2023.

MICHELLE R. MILLER, CLERK OF THE CIRCUIT COURT
ST. LUCIE COUNTY, FLORIDA

TITLE CERTIFICATION

I, _____ A DULY LICENSED ATTORNEY IN THE STATE OF FLORIDA, DO HEREBY CERTIFY THAT, AS OF THE ____ DAY OF _____, 2023:

THE RECORD TITLE TO THE LAND AS DESCRIBED AND SHOWN HEREON IS IN THE NAME OF RIVERLAND ASSOCIATES IV, LLLP A FLORIDA LIMITED LIABILITY LIMITED PARTNERSHIP, THE ENTITY EXECUTING THE DEDICATION. THERE ARE NO MORTGAGES OF RECORD, ENCUMBRING THE LAND DESCRIBED HEREON. PURSUANT TO FLORIDA STATUTE 197.192, ALL TAXES HAVE BEEN PAID THROUGH THE YEAR 2022.

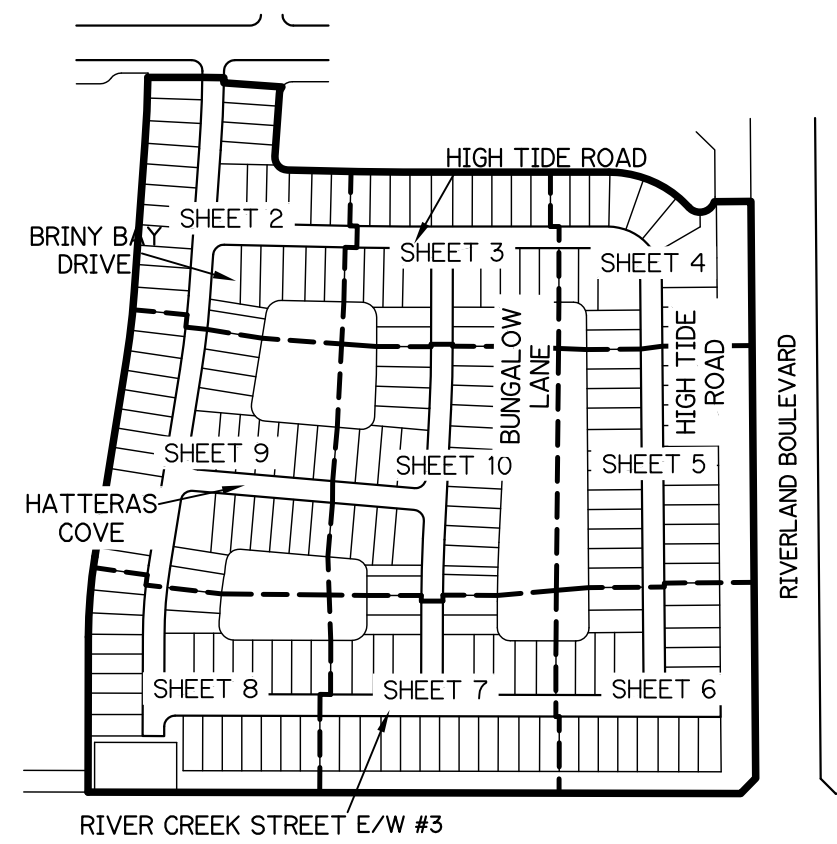
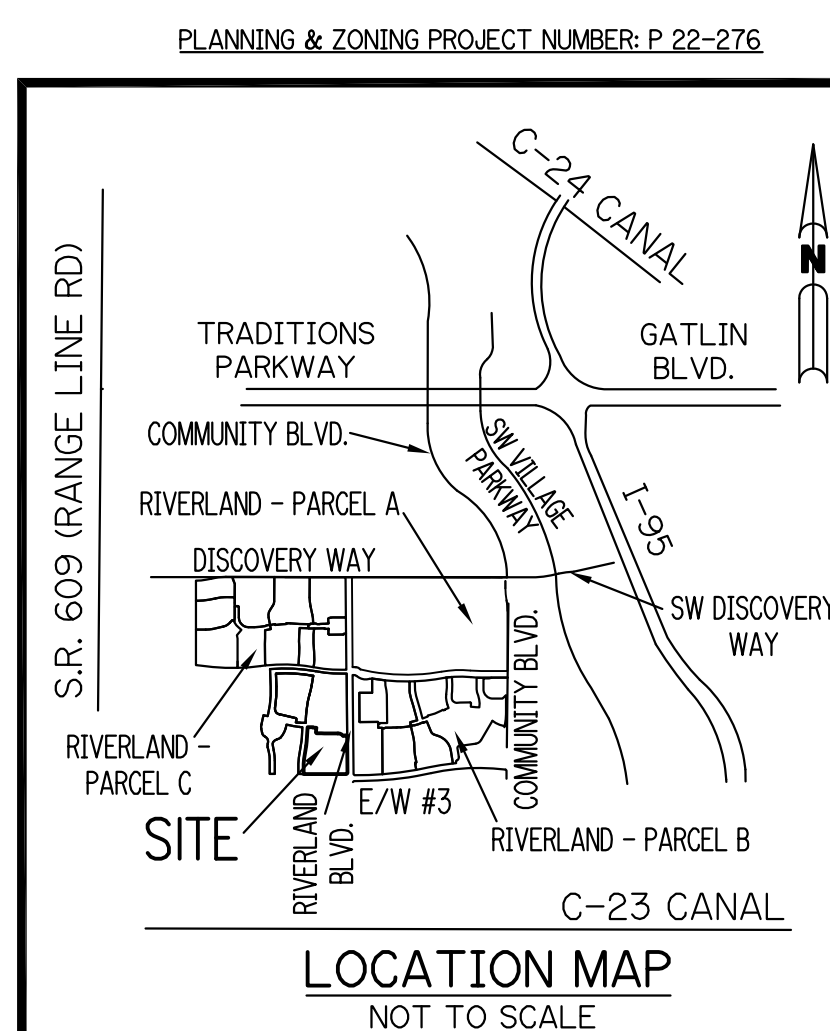
ALL ASSESSMENTS AND OTHER ITEMS HELD AGAINST SAID LAND HAVE BEEN SATISFIED. THERE ARE ENCUMBRANCES OF RECORD BUT THESE ENCUMBRANCES DO NOT PROHIBIT THE CREATION OF THE SUBDIVISION DEPICTED BY THIS PLAT.

DATED THIS ____ DAY OF _____, 2023.

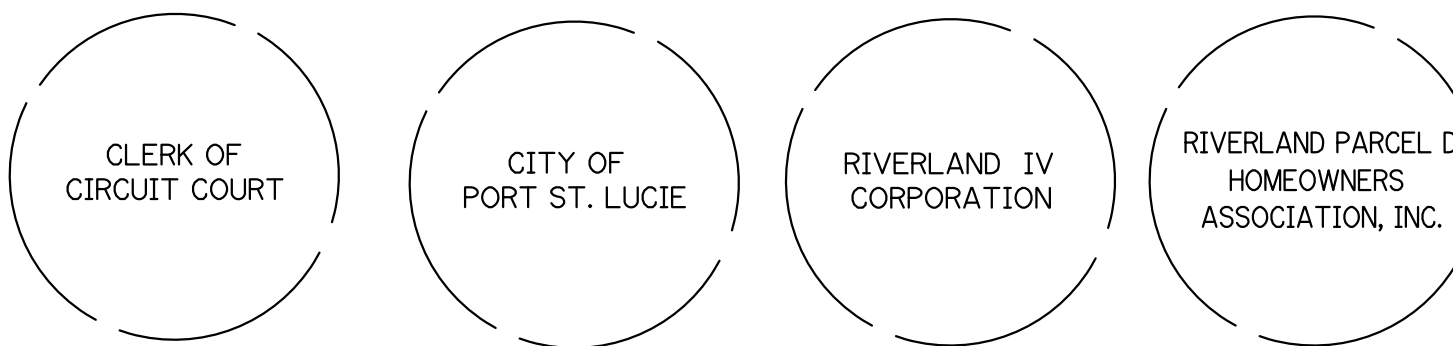
BY: _____

PRINT NAME: _____
ATTORNEY AT LAW
FLORIDA BAR # _____
FOR THE FIRM OF GREENBERG TRAUIG, P.A.

THIS INSTRUMENT PREPARED BY
PERRY C. WHITE, P.S.M. 4213,
STATE OF FLORIDA
SAND & HILLS SURVEYING, INC.
8461 LAKE WORTH ROAD, SUITE 410
LAKE WORTH, FLORIDA 33467 LB-7741



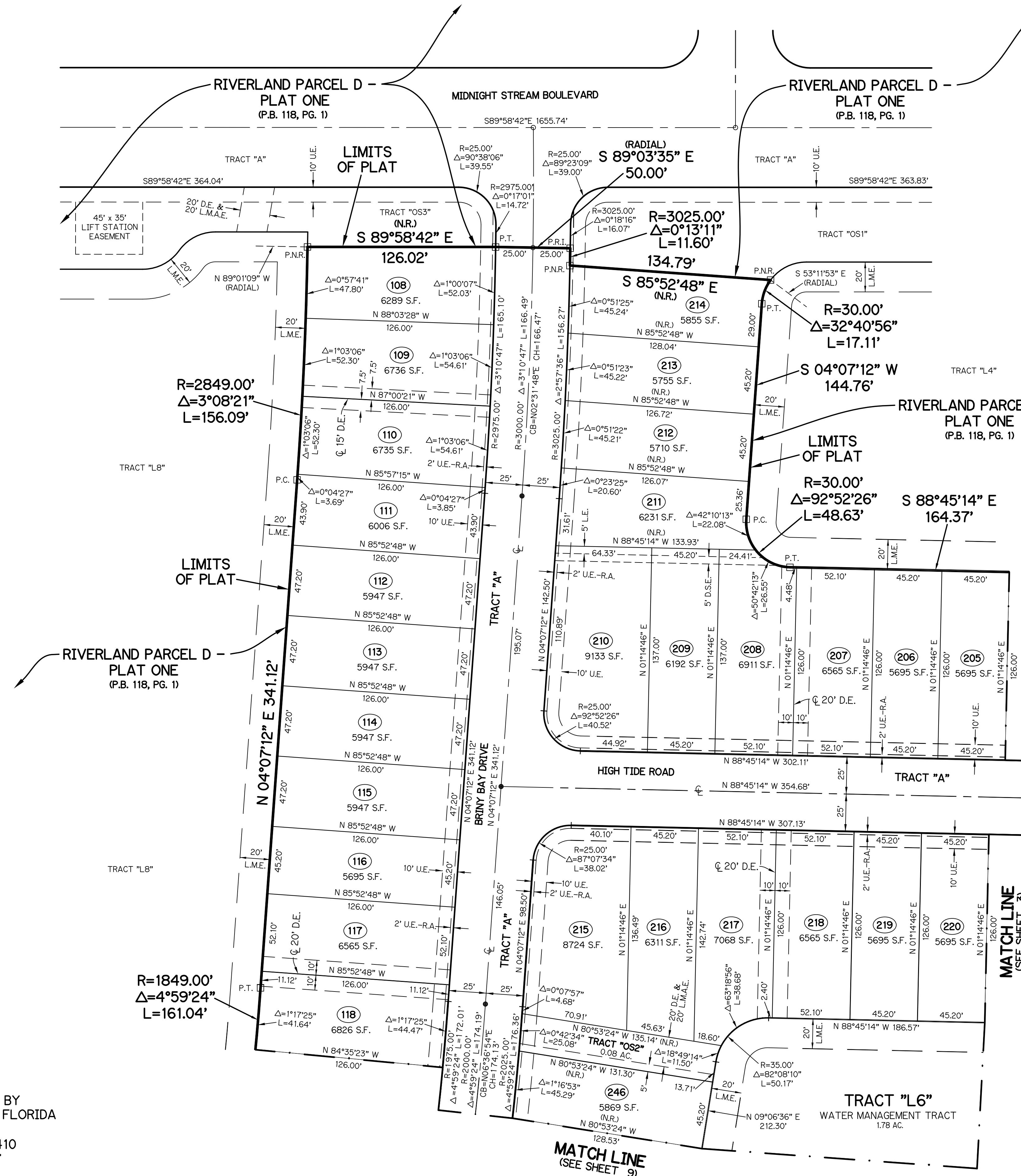
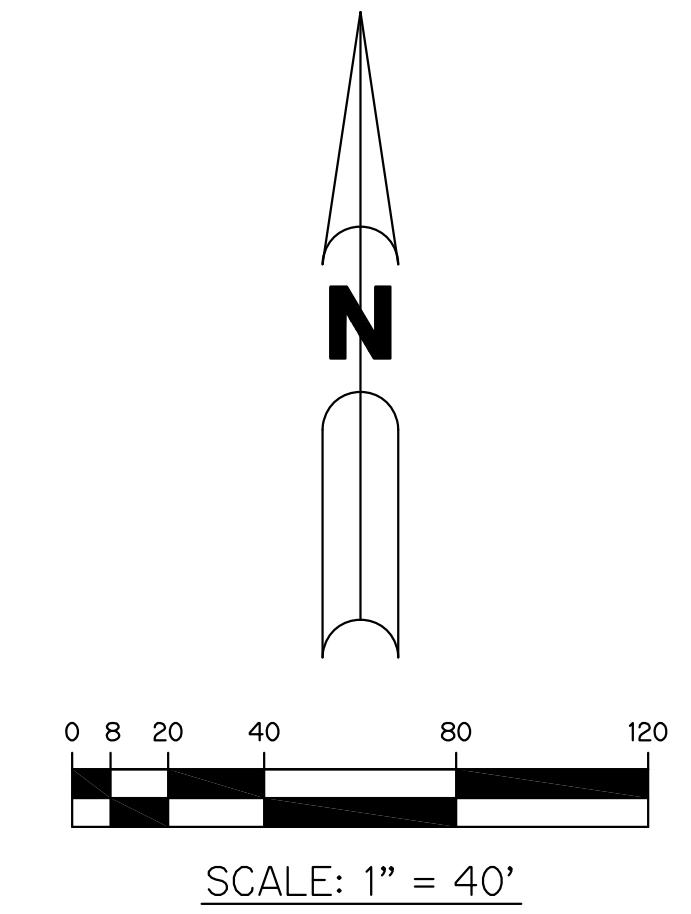
KEY MAP
N.T.S.



RIVERLAND PARCEL D - PLAT TWO

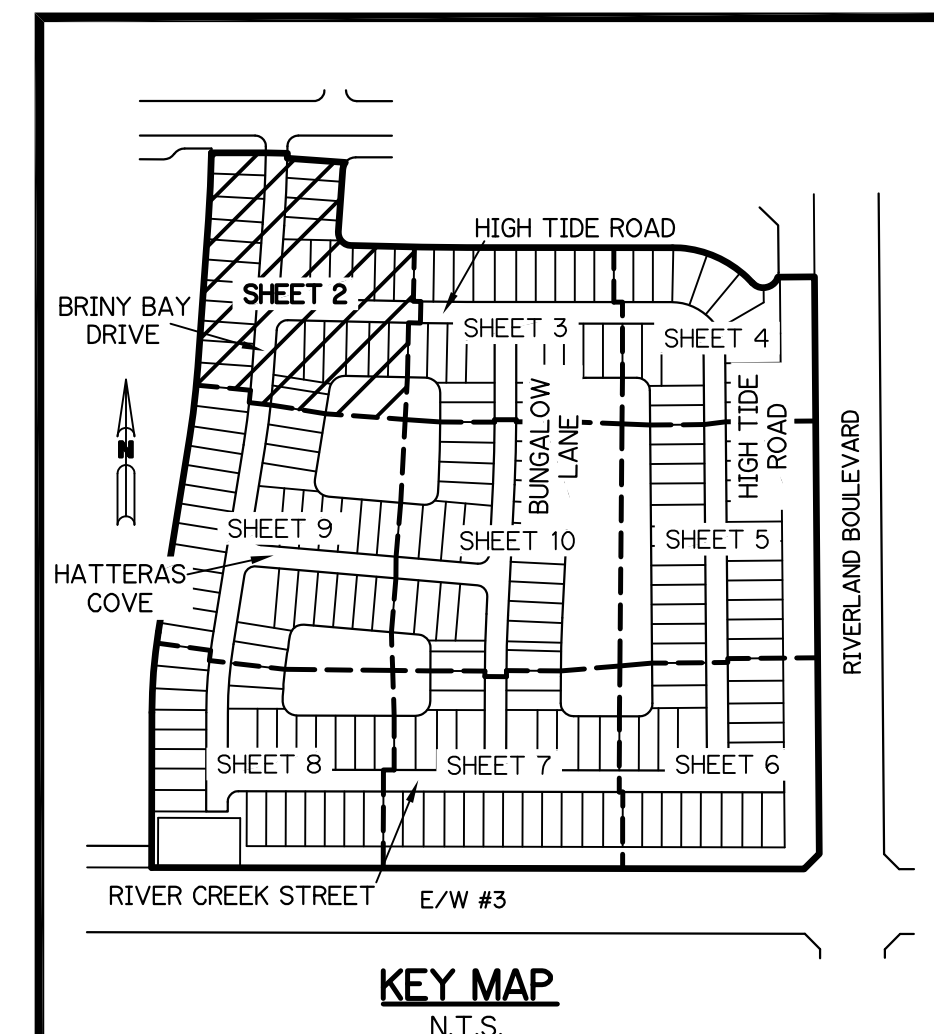
A PARCEL OF LAND LYING IN SECTION 20, TOWNSHIP 37 SOUTH,
RANGE 39 EAST, CITY OF PORT ST. LUCIE, ST. LUCIE COUNTY, FLORIDA

SHEET 2 OF 10



- LEGEND:**
- - SET PERMANENT REFERENCE MONUMENT
5/8" IRON ROD WITH 1.5" CAP
STAMPED FRM L.B. #7741
 - - FOUND PERMANENT REFERENCE MONUMENT
5/8" IRON ROD WITH 1.5" CAP
STAMPED FRM L.B. #7741
 - - SET PERMANENT CONTROL POINT
NAIL WITH 1.25" DISK STAMPED PCP L.B. #7741
 - - FOUND PERMANENT CONTROL POINT
NAIL WITH 1.25" DISK STAMPED PCP L.B. #7741
 - Δ - DELTA ANGLE
 - AC - ACRES
 - BE - BUFFER EASEMENT
 - CB - CHORD BEARING
 - CH - CHORD DISTANCE
 - CL - CENTERLINE
 - DB - DEED BOOK
 - DE - DRAINAGE EASEMENT
 - D.S.E. - DRAINAGE SWALE EASEMENT
 - L - ARC LENGTH
 - L.A.E. - LIMITED ACCESS EASEMENT
 - L.E. - LANDSCAPE EASEMENT
 - L.M.A.E. - LAKE MAINTENANCE ACCESS EASEMENT
 - L.M.E. - LAKE MAINTENANCE EASEMENT
 - NR - NOT RADIAL
 - N.R.T.R. - NOT RADIAL TO REAR
 - N.T.S. - NOT TO SCALE
 - O.R.B. - OFFICIAL RECORD BOOK
 - O.E. - MAINTENANCE & ROOF OVERHANG EASEMENT
 - P.B. - PLAT BOOK
 - P.C.P. - PERMANENT CONTROL POINT
 - P.G.S. - PAGES
 - P.O.B. - POINT OF BEGINNING
 - P.O.C. - POINT OF COMMENCEMENT
 - P.S.L.U.E. - PORT ST. LUCIE UTILITY EASEMENT
 - P.S.M. - PROFESSIONAL SURVEYOR AND MAPPER
 - R - RADIUS
 - R/W - RIGHT-OF-WAY
 - S.F. - SQUARE FEET
 - S.T. - SURVEY TIE
 - U.E. - UTILITY EASEMENT
 - RAD - RADIAL LINE
 - U.E.-R.A. - UTILITY EASEMENT-RESTRICTED AREA
 - P.C. - POINT OF CURVATURE
 - P.T. - POINT OF TANGENCY
 - P.R.C. - POINT OF REVERSE CURVATURE
 - P.N.R. - POINT OF NON-RADIAL INTERSECTION
 - P.R.I. - POINT OF RADIAL INTERSECTION

THIS INSTRUMENT WAS PREPARED BY
PERRY C. WHITE, P.S.M. 4213, STATE OF FLORIDA
SAND & HILLS SURVEYING, INC.
8461 LAKE WORTH ROAD, SUITE 410
LAKE WORTH, FLORIDA 33467
LB-7741

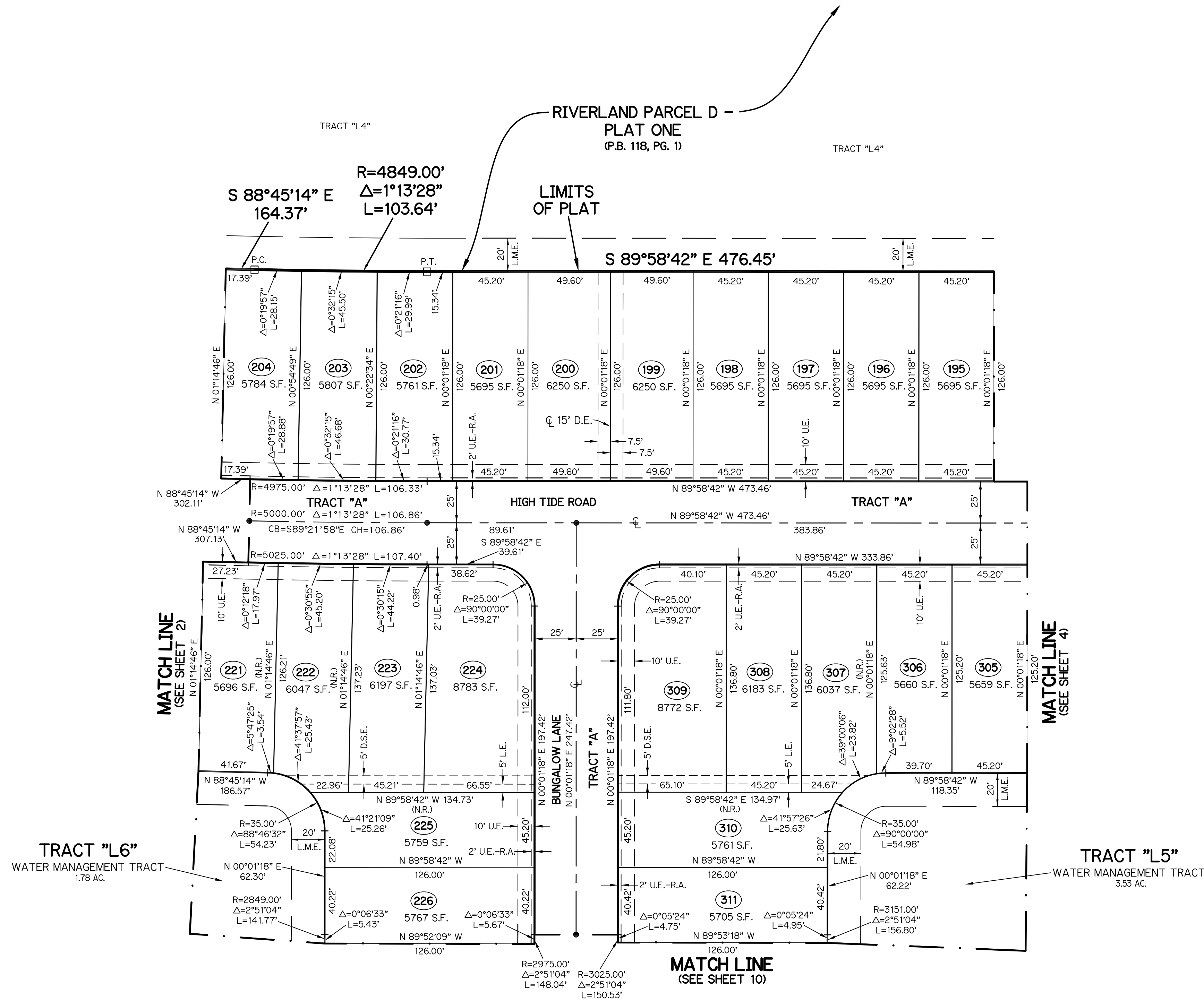
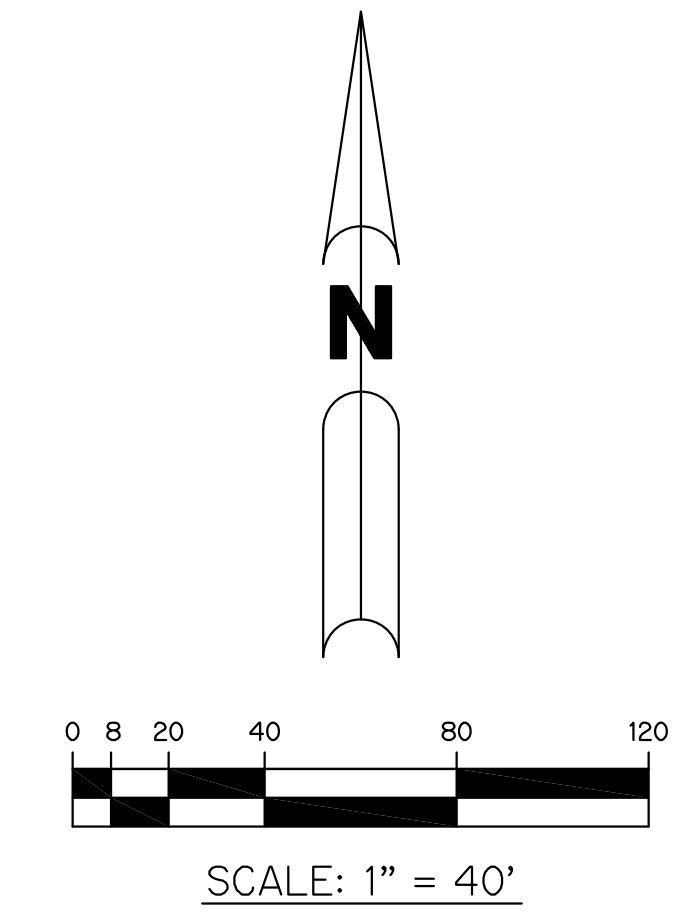


KEY MAP
N.T.S.

RIVERLAND PARCEL D - PLAT TWO

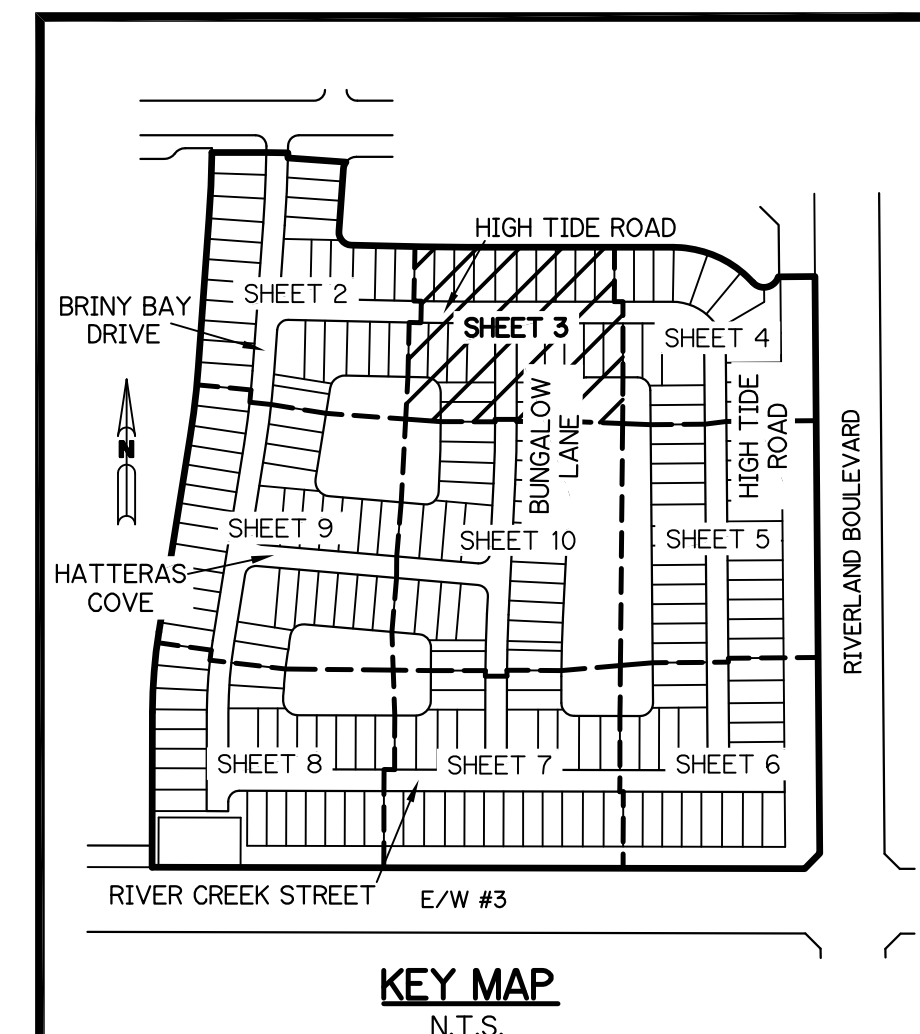
A PARCEL OF LAND LYING IN SECTION 20, TOWNSHIP 37 SOUTH,
RANGE 39 EAST, CITY OF PORT ST. LUCIE, ST. LUCIE COUNTY, FLORIDA

SHEET 3 OF 10



- LEGEND:**
- - SET PERMANENT REFERENCE MONUMENT
5/8" IRON ROD WITH 1.5" CAP
STAMPED PRM L.B. #7741
 - - FOUND PERMANENT REFERENCE MONUMENT
5/8" IRON ROD WITH 1.5" CAP
STAMPED PRM L.B. #7741
 - - SET PERMANENT CONTROL POINT
NAIL WITH 1.25" DISK STAMPED PCP L.B. #7741
 - - FOUND PERMANENT CONTROL POINT
NAIL WITH 1.25" DISK STAMPED PCP L.B. #7741
 - Δ - DELTA ANGLE
 - AC. - ACRES
 - B.E. - BUFFER EASEMENT
 - CB - CHORD BEARING
 - CH - CHORD DISTANCE
 - CL - CENTERLINE
 - D.B. - DEED BOOK
 - D.E. - DRAINAGE EASEMENT
 - D.S.E. - DRAINAGE SWALE EASEMENT
 - L - ARC LENGTH
 - L.A.E. - LIMITED ACCESS EASEMENT
 - L.E. - LANDSCAPE EASEMENT
 - L.M.A.E. - LAKE MAINTENANCE ACCESS EASEMENT
 - L.M.E. - LAKE MAINTENANCE EASEMENT
 - N.R. - NOT RADIAL
 - N.R.T.R. - NOT RADIAL TO REAR
 - N.T.S. - NOT TO SCALE
 - O.R.B. - OFFICIAL RECORD BOOK
 - O.E. - MAINTENANCE & ROOF OVERHANG EASEMENT
 - P.B. - PLAT BOOK
 - P.C.P. - PERMANENT CONTROL POINT
 - P.S. - PAGES
 - P.O.B. - POINT OF BEGINNING
 - P.O.C. - POINT OF COMMENCEMENT
 - P.S.L.U.E. - PORT ST. LUCIE UTILITY EASEMENT
 - P.S.M. - PROFESSIONAL SURVEYOR AND MAPPER
 - R - RADIUS
 - R/W - RIGHT-OF-WAY
 - S.F. - SQUARE FEET
 - S.T. - SURVEY TIE
 - U.E. - UTILITY EASEMENT
 - RAD - RADIAL LINE
 - U.E.-R.A. - UTILITY EASEMENT-RESTRICTED AREA
 - P.C. - POINT OF COMMENCEMENT
 - P.T. - POINT OF TANGENCY
 - P.R.C. - POINT OF REVERSE CURVATURE
 - P.N.R. - POINT OF NON-RADIAL INTERSECTION
 - P.R.I. - POINT OF RADIAL INTERSECTION

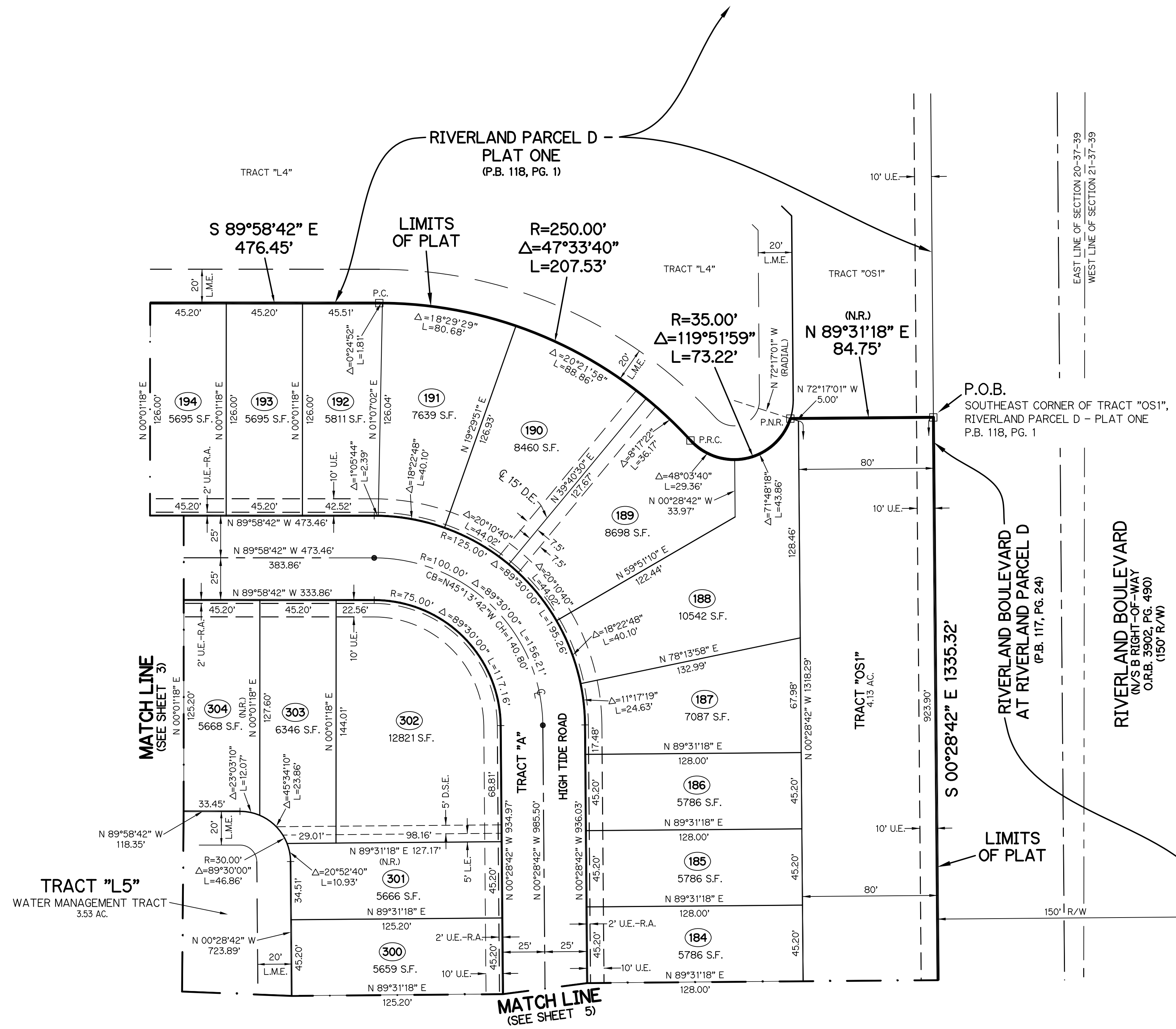
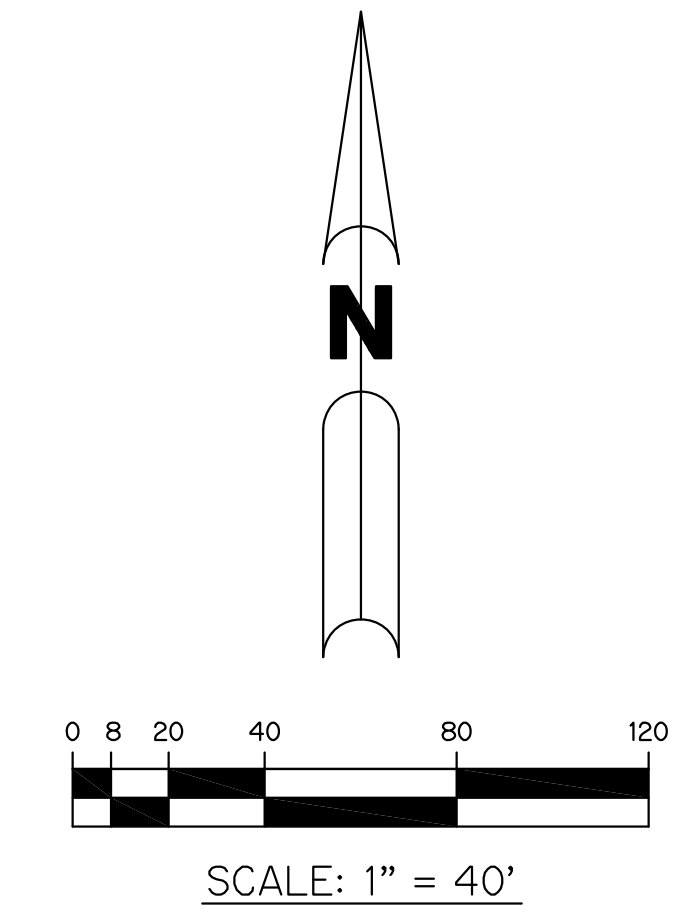
THIS INSTRUMENT WAS PREPARED BY
PERRY C. WHITE, P.S.M. 4213, STATE OF FLORIDA
SAND & HILLS SURVEYING, INC.
8461 LAKE WORTH ROAD, SUITE 410
LAKE WORTH, FLORIDA 33467
LB-7741



RIVERLAND PARCEL D - PLAT TWO

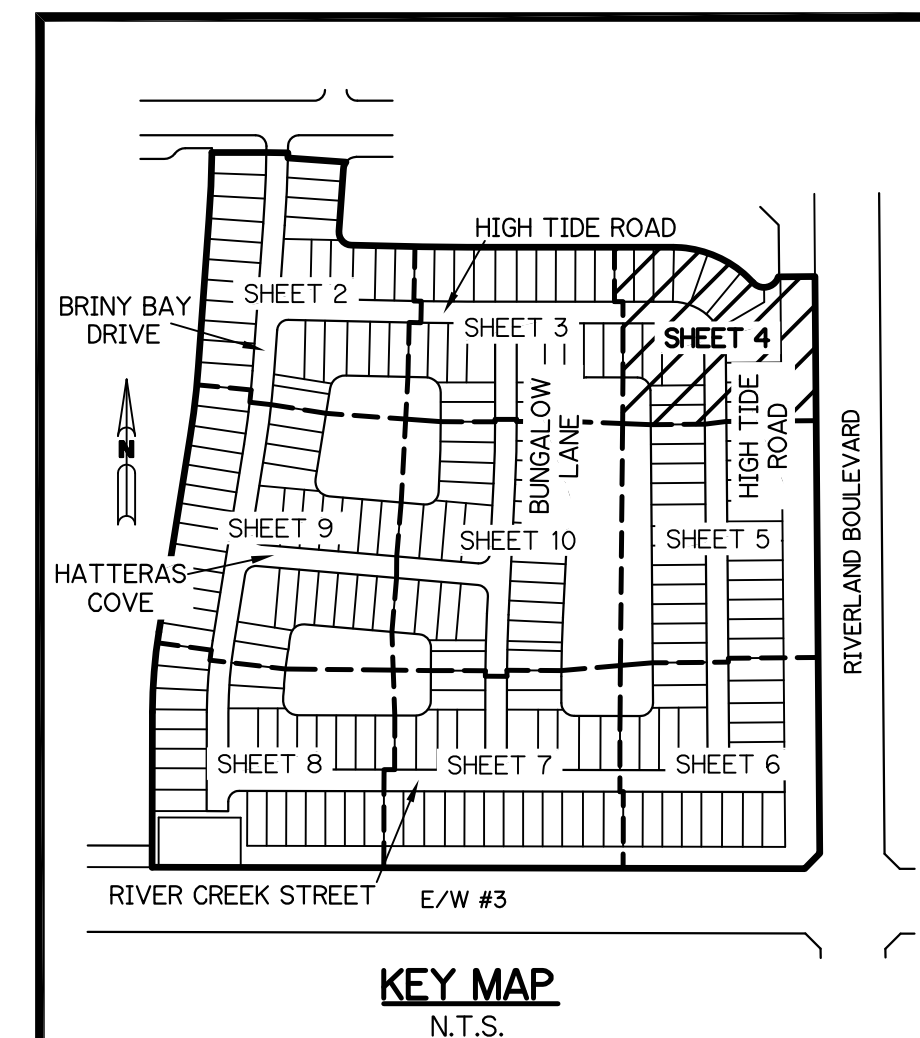
A PARCEL OF LAND LYING IN SECTION 20, TOWNSHIP 37 SOUTH,
RANGE 39 EAST, CITY OF PORT ST. LUCIE, ST. LUCIE COUNTY, FLORIDA

SHEET 4 OF 10



- LEGEND:**
- - SET PERMANENT REFERENCE MONUMENT
5/8" IRON ROD WITH 1.5" CAP
STAMPED PRM L.B. #7741
 - - FOUND PERMANENT REFERENCE MONUMENT
5/8" IRON ROD WITH 1.5" CAP
STAMPED PRM L.B. #7741
 - - SET PERMANENT CONTROL POINT
NAIL WITH 1.25" DISK STAMPED PCP L.B. #7741
 - - FOUND PERMANENT CONTROL POINT
NAIL WITH 1.25" DISK STAMPED PCP L.B. #7741
 - Δ - DELTA ANGLE
 - AC - ACRES
 - B.E. - BUFFER EASEMENT
 - CB - CHORD BEARING
 - CH - CHORD DISTANCE
 - CL - CENTERLINE
 - D.B. - DEED BOOK
 - D.E. - DRAINAGE EASEMENT
 - D.S.E. - DRAINAGE SWALE EASEMENT
 - L - ARC LENGTH
 - L.A.E. - LIMITED ACCESS EASEMENT
 - L.E. - LANDSCAPE EASEMENT
 - L.M.A.E. - LAKE MAINTENANCE ACCESS EASEMENT
 - L.M.E. - LAKE MAINTENANCE EASEMENT
 - N.R. - NOT RADIAL
 - N.R.T.R. - NOT RADIAL TO REAR
 - N.T.S. - NOT TO SCALE
 - O.R.B. - OFFICIAL RECORD BOOK
 - O.E. - MAINTENANCE & ROOF OVERHANG EASEMENT
 - P.B. - PLAT BOOK
 - P.C.P. - PERMANENT CONTROL POINT
 - P.G.S. - PAGES
 - P.O.B. - POINT OF BEGINNING
 - P.O.C. - POINT OF COMMENCEMENT
 - P.S.L.U.E. - PORT ST. LUCIE UTILITY EASEMENT
 - P.S.M. - PROFESSIONAL SURVEYOR AND MAPPER
 - R - RADIUS
 - R/W - RIGHT-OF-WAY
 - S.F. - SQUARE FEET
 - S.T. - SURVEY TIE
 - U.E. - UTILITY EASEMENT
 - U.E.-R.A. - UTILITY EASEMENT-RESTRICTED AREA
 - P.C. - POINT OF CURVATURE
 - P.T. - POINT OF TANGENCY
 - P.R.C. - POINT OF REVERSE CURVATURE
 - P.N.R. - POINT OF NON-RADIAL INTERSECTION
 - P.R.I. - POINT OF RADIAL INTERSECTION

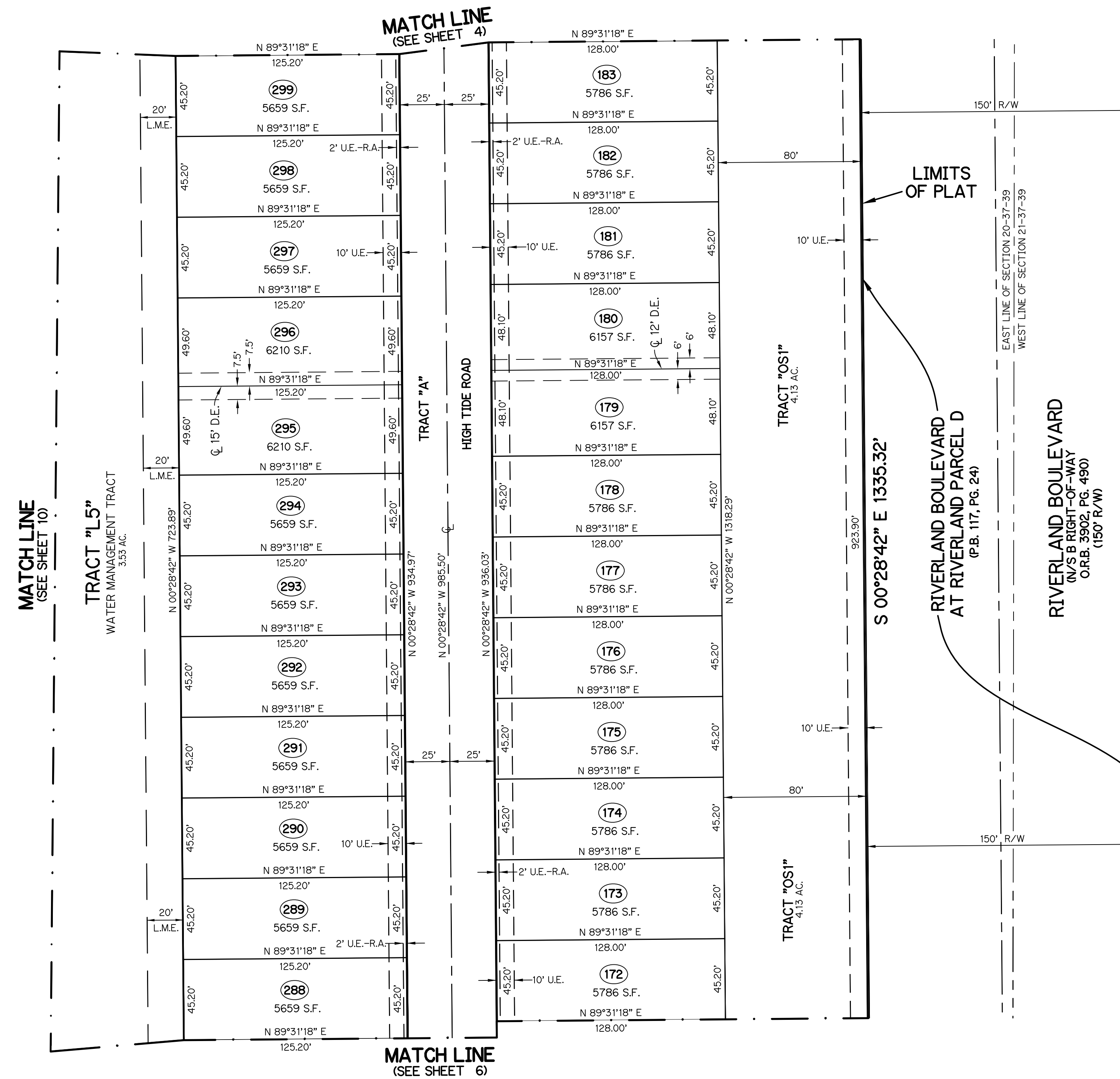
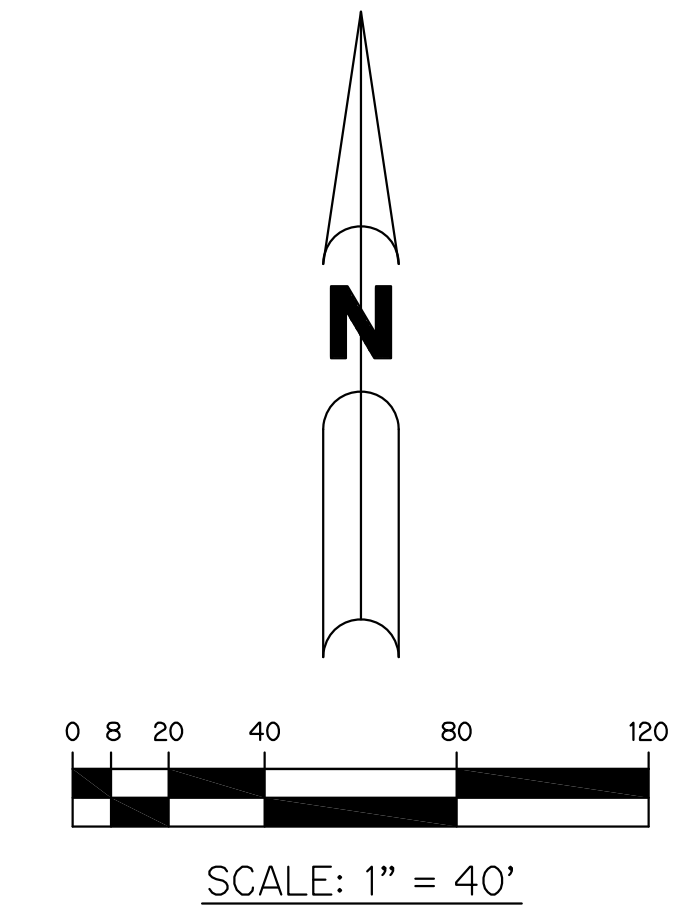
THIS INSTRUMENT WAS PREPARED BY
PERRY C. WHITE, P.S.M. 4213, STATE OF FLORIDA
SAND & HILLS SURVEYING, INC.
8461 LAKE WORTH ROAD, SUITE 410
LAKE WORTH, FLORIDA 33467
LB-7741



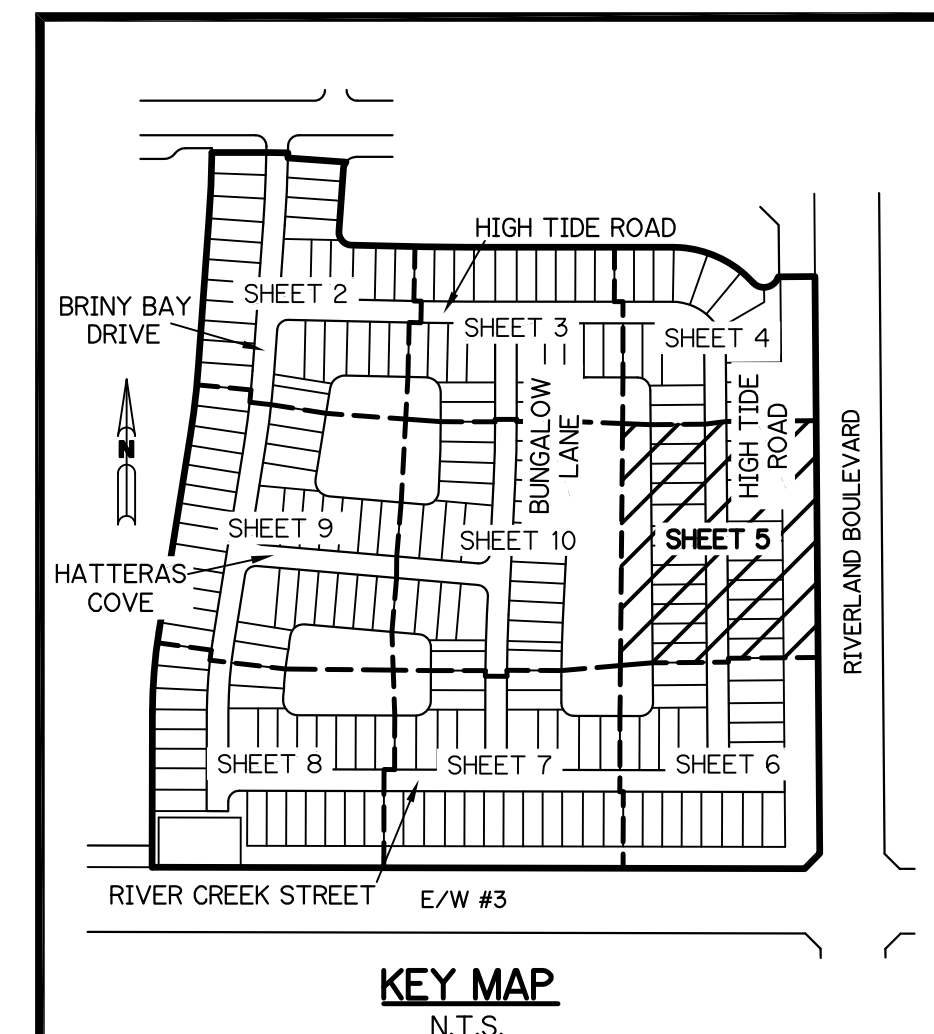
RIVERLAND PARCEL D - PLAT TWO

A PARCEL OF LAND LYING IN SECTION 20, TOWNSHIP 37 SOUTH,
RANGE 39 EAST, CITY OF PORT ST. LUCIE, ST. LUCIE COUNTY, FLORIDA

SHEET 5 OF 10



- LEGEND:**
- - SET PERMANENT REFERENCE MONUMENT
5/8" IRON ROD WITH 1.5" CAP
STAMPED PRM L.B. #7741
 - - FOUND PERMANENT REFERENCE MONUMENT
5/8" IRON ROD WITH 1.5" CAP
STAMPED PRM L.B. #7741
 - - SET PERMANENT CONTROL POINT
NAIL WITH 1.25" DISK STAMPED PCP L.B. #7741
 - - FOUND PERMANENT CONTROL POINT
NAIL WITH 1.25" DISK STAMPED PCP L.B. #7741
 - Δ - DELTA ANGLE
 - AC. - ACRES
 - B.E. - BUFFER EASEMENT
 - CB - CHORD BEARING
 - CH - CHORD DISTANCE
 - CL - CENTERLINE
 - D.B. - DEED BOOK
 - D.E. - DRAINAGE EASEMENT
 - D.S.E. - DRAINAGE SWALE EASEMENT
 - L - ARC LENGTH
 - L.A.E. - LIMITED ACCESS EASEMENT
 - L.E. - LANDSCAPE EASEMENT
 - L.M.A.E. - LAKE MAINTENANCE ACCESS EASEMENT
 - L.M.E. - LAKE MAINTENANCE EASEMENT
 - N.R. - NOT RADIAL
 - N.R.T.R. - NOT RADIAL TO REAR
 - N.T.S. - NOT TO SCALE
 - O.R.B. - OFFICIAL RECORD BOOK
 - O.E. - MAINTENANCE & ROOF OVERHANG EASEMENT
 - P.B. - PLAT BOOK
 - P.C.P. - PERMANENT CONTROL POINT
 - P.G.S. - PAGES
 - P.O.B. - POINT OF BEGINNING
 - P.O.C. - POINT OF COMMENCEMENT
 - P.S.L.U.E. - PORT ST. LUCIE UTILITY EASEMENT
 - P.S.M. - PROFESSIONAL SURVEYOR AND MAPPER
 - R - RADIUS
 - R/W - RIGHT-OF-WAY
 - S.F. - SQUARE FEET
 - S.T. - SURVEY TIE
 - U.E. - UTILITY EASEMENT
 - RAD - RADIAL LINE
 - U.E.-R.A. - UTILITY EASEMENT-RESTRICTED AREA
 - P.C. - POINT OF CURVATURE
 - P.T. - POINT OF TANGENCY
 - P.R.C. - POINT OF REVERSE CURVATURE
 - P.N.R. - POINT OF NON-RADIAL INTERSECTION
 - P.R.I. - POINT OF RADIAL INTERSECTION

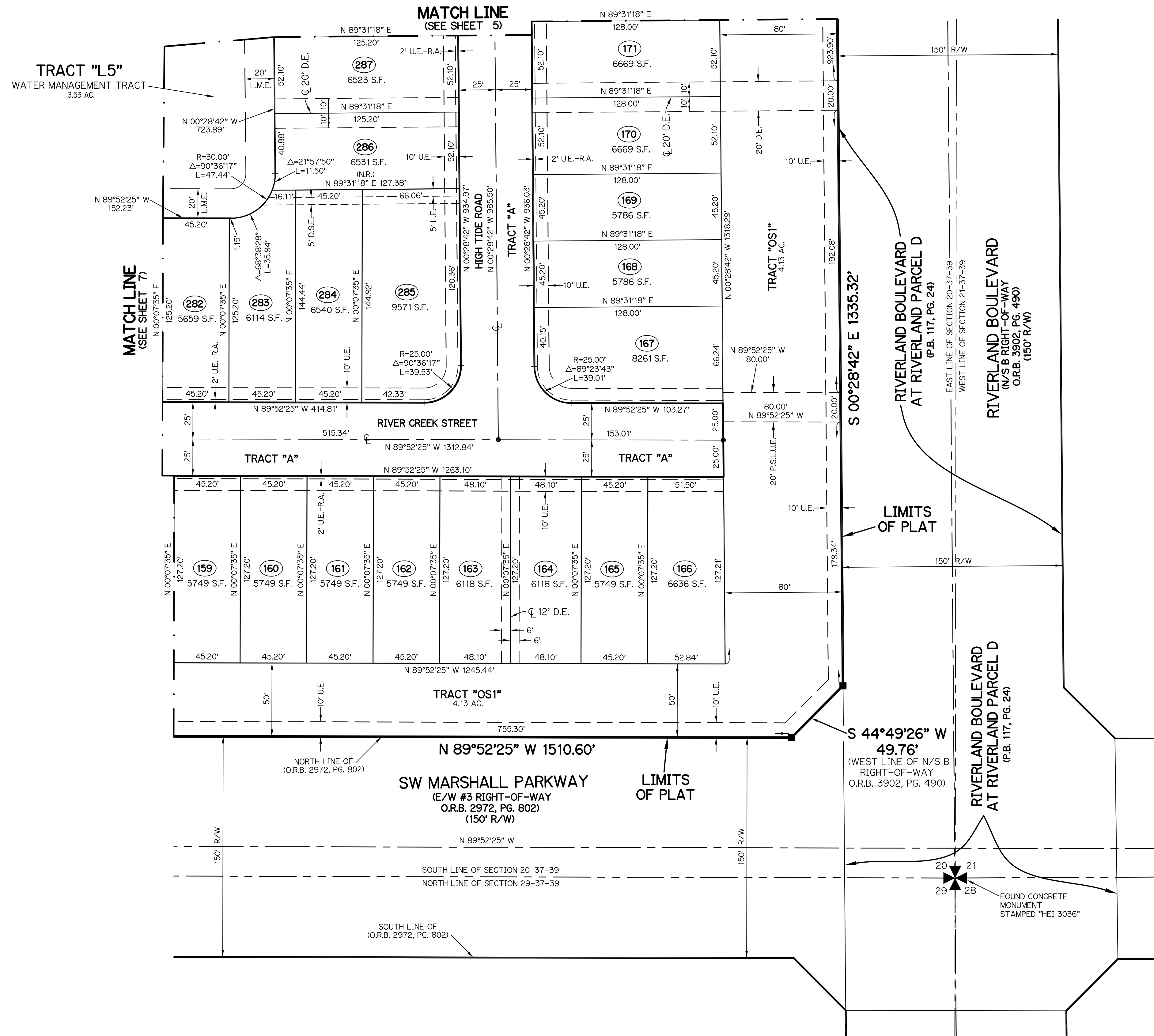
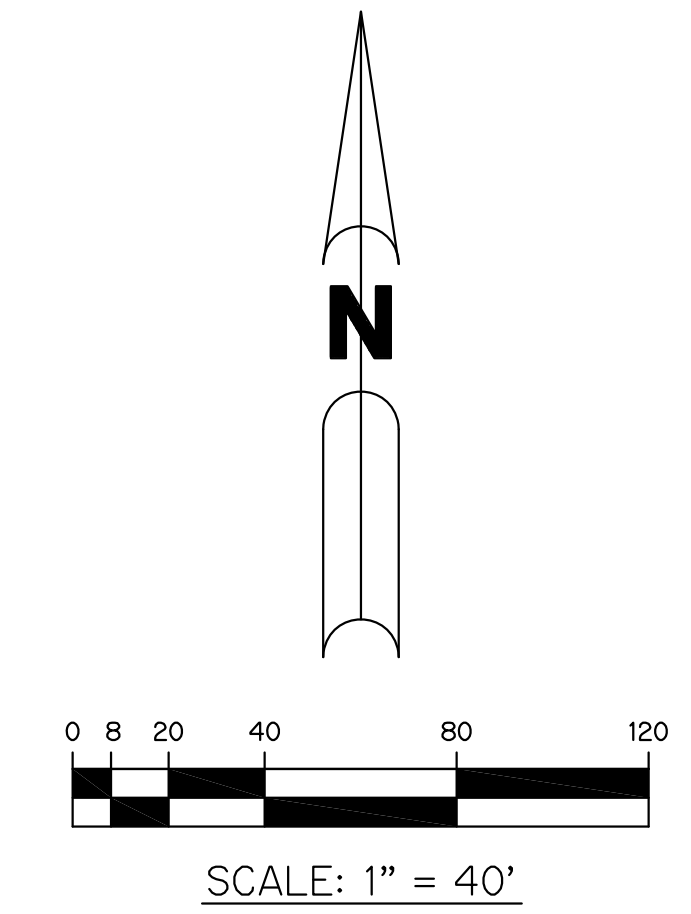


THIS INSTRUMENT WAS PREPARED BY
PERRY C. WHITE, P.S.M. 4213, STATE OF FLORIDA
SAND & HILLS SURVEYING, INC.
8461 LAKE WORTH ROAD, SUITE 410
LAKE WORTH, FLORIDA 33467
LB-7741

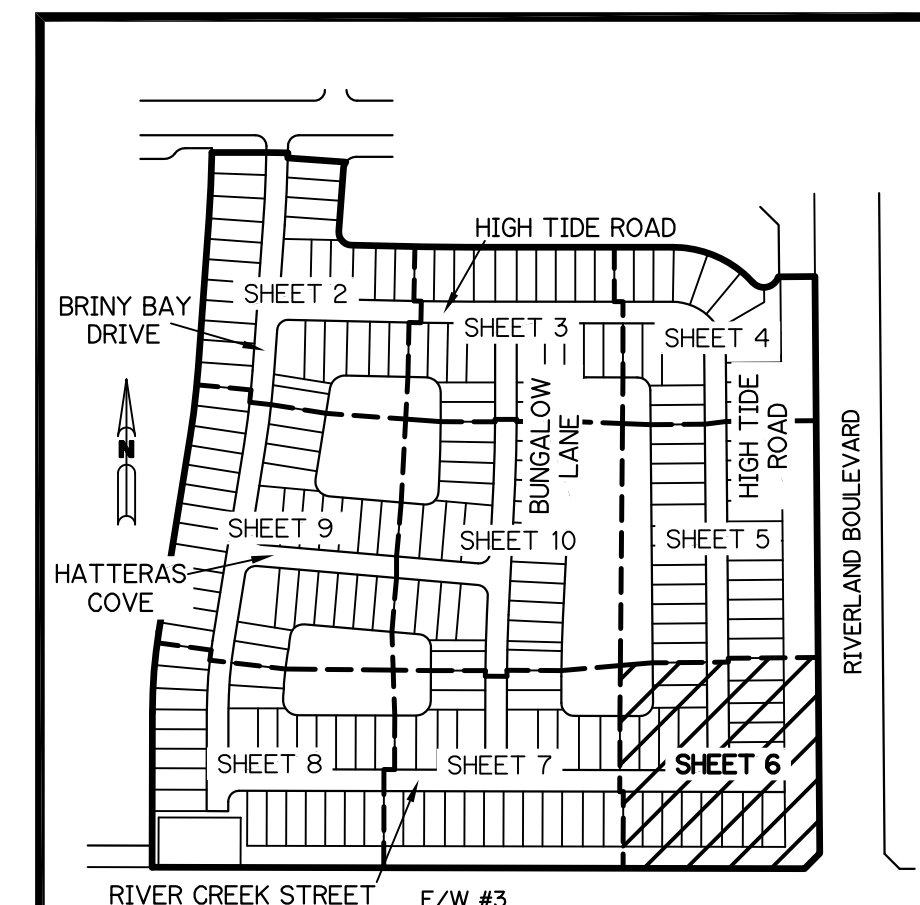
RIVERLAND PARCEL D - PLAT TWO

A PARCEL OF LAND LYING IN SECTION 20, TOWNSHIP 37 SOUTH,
RANGE 39 EAST, CITY OF PORT ST. LUCIE, ST. LUCIE COUNTY, FLORIDA

SHEET 6 OF 10



- LEGEND:**
- - SET PERMANENT REFERENCE MONUMENT
5/8" IRON ROD WITH 1.5" CAP
STAMPED PRM L.B. #7741
 - - FOUND PERMANENT REFERENCE MONUMENT
5/8" IRON ROD WITH 1.5" CAP
STAMPED PRM L.B. #7741
 - - SET PERMANENT CONTROL POINT
NAIL WITH 1.25" DISK STAMPED PCP L.B. #7741
 - - FOUND PERMANENT CONTROL POINT
NAIL WITH 1.25" DISK STAMPED PCP L.B. #7741
 - Δ - DELTA ANGLE
 - AC. - ACRES
 - B.E. - BUFFER EASEMENT
 - CB - CHORD BEARING
 - CH - CHORD DISTANCE
 - CL - CENTERLINE
 - D.B. - DEED BOOK
 - D.E. - DRAINAGE EASEMENT
 - D.S.E. - DRAINAGE SWALE EASEMENT
 - L - ARC LENGTH
 - L.A.E. - LIMITED ACCESS EASEMENT
 - L.E. - LANDSCAPE EASEMENT
 - L.M.A.E. - LAKE MAINTENANCE ACCESS EASEMENT
 - L.M.E. - LAKE MAINTENANCE EASEMENT
 - N.R. - NOT RADIAL
 - N.R.T.R. - NOT RADIAL TO REAR
 - N.T.S. - NOT TO SCALE
 - O.R.B. - OFFICIAL RECORD BOOK
 - O.E. - MAINTENANCE & ROOF OVERHANG EASEMENT
 - P.B. - PLAT BOOK
 - P.C.P. - PERMANENT CONTROL POINT
 - P.C.S. - PAGES
 - P.O.B. - POINT OF BEGINNING
 - P.O.C. - POINT OF COMMENCEMENT
 - P.S.L.U.E. - PORT ST. LUCIE UTILITY EASEMENT
 - P.S.M. - PROFESSIONAL SURVEYOR AND MAPPER
 - R - RADIUS
 - R/W - RIGHT-OF-WAY
 - S.F. - SQUARE FEET
 - S.T. - SURVEY TIE
 - U.E. - UTILITY EASEMENT
 - RAD - RADIAL LINE
 - U.E.-R.A. - UTILITY EASEMENT-RESTRICTED AREA
 - P.C. - POINT OF CURVATURE
 - P.T. - POINT OF TANGENCY
 - P.R.C. - POINT OF REVERSE CURVATURE
 - P.N.R. - POINT OF NON-RADIAL INTERSECTION
 - P.R.I. - POINT OF RADIAL INTERSECTION



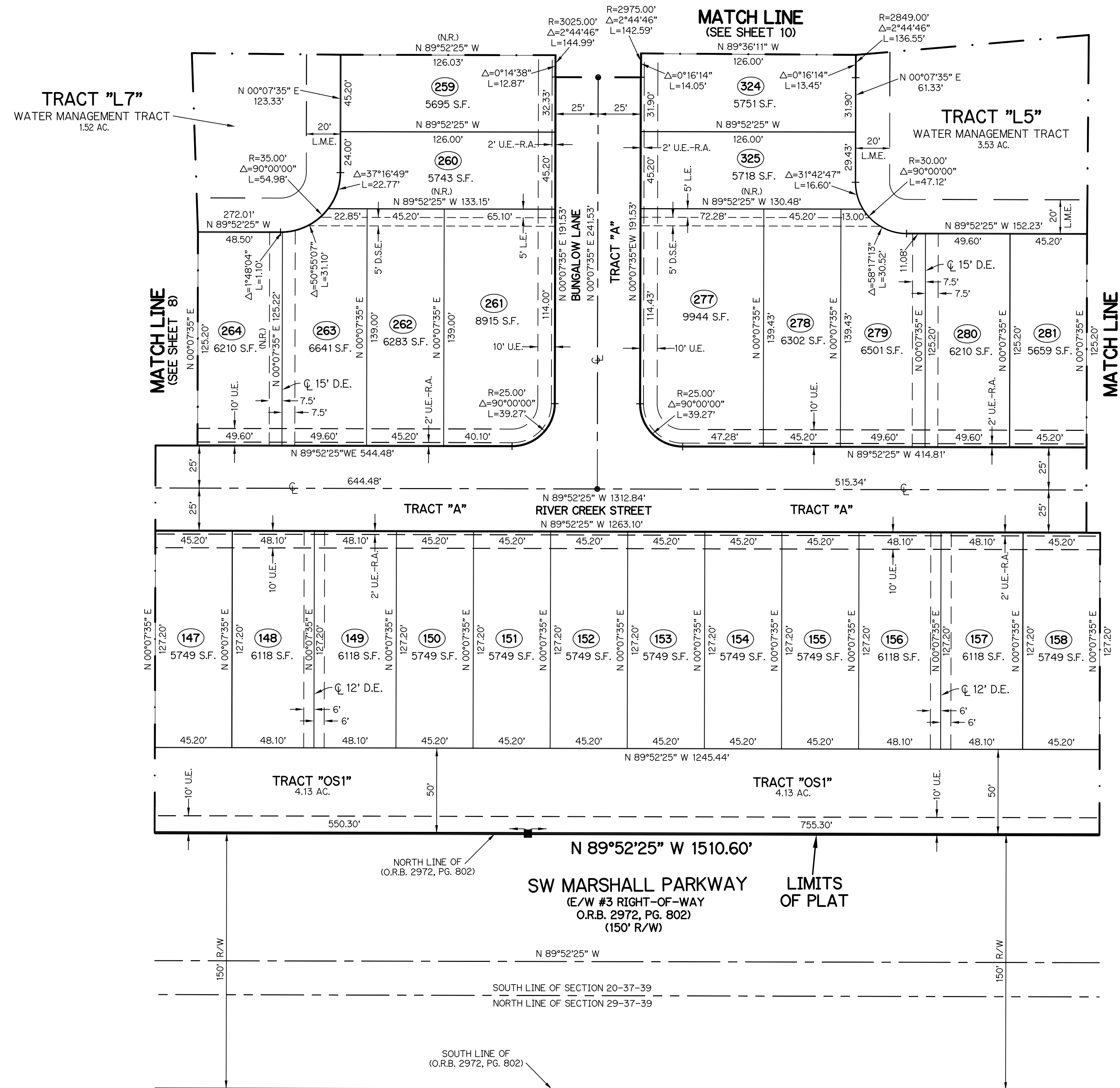
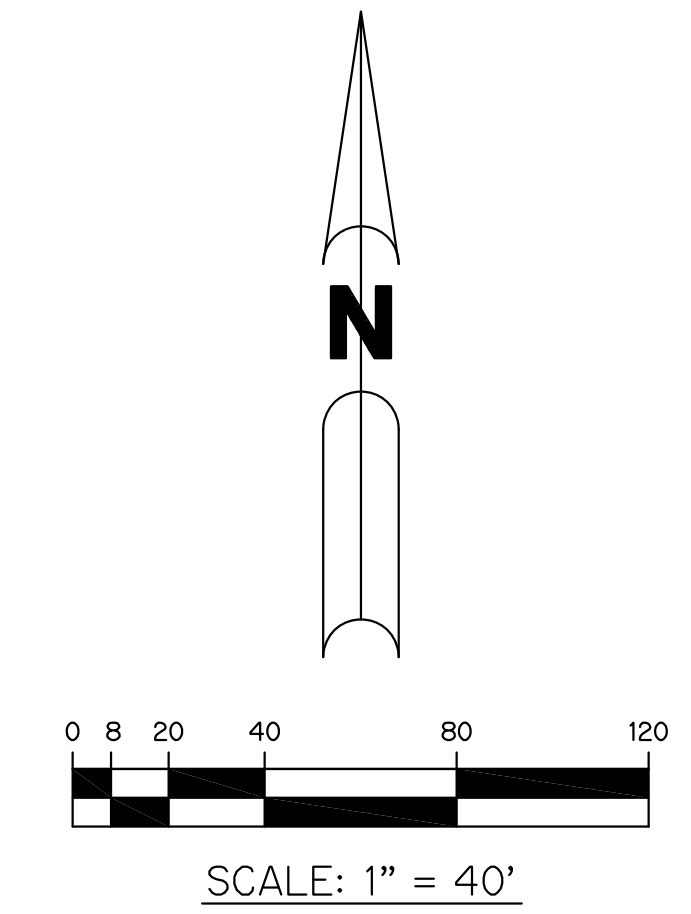
KEY MAP
N.T.S.

THIS INSTRUMENT WAS PREPARED BY
PERRY C. WHITE, P.S.M. 4213, STATE OF FLORIDA
SAND & HILLS SURVEYING, INC.
8461 LAKE WORTH ROAD, SUITE 410
LAKE WORTH, FLORIDA 33467
LB-7741

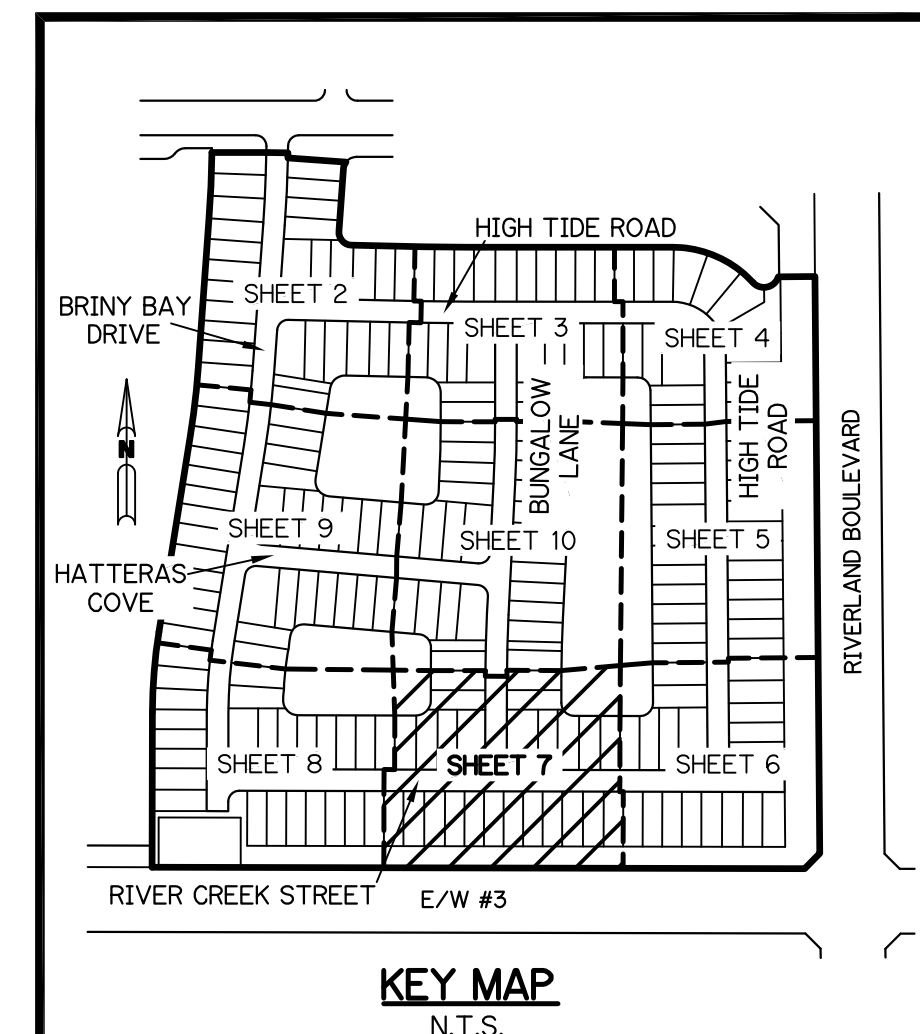
RIVERLAND PARCEL D - PLAT TWO

A PARCEL OF LAND LYING IN SECTION 20, TOWNSHIP 37 SOUTH,
RANGE 39 EAST, CITY OF PORT ST. LUCIE, ST. LUCIE COUNTY, FLORIDA

SHEET 7 OF 10



- LEGEND:**
- - SET PERMANENT REFERENCE MONUMENT
5/8" IRON ROD WITH 1.5" CAP
STAMPED PRM L.B. #7741
 - - FOUND PERMANENT REFERENCE MONUMENT
5/8" IRON ROD WITH 1.5" CAP
STAMPED PRM L.B. #7741
 - - SET PERMANENT CONTROL POINT
NAIL WITH 1.25" DISK STAMPED PCP L.B. #7741
 - - FOUND PERMANENT CONTROL POINT
NAIL WITH 1.25" DISK STAMPED PCP L.B. #7741
 - Δ - DELTA ANGLE
 - AC. - ACRES
 - B.E. - BUFFER EASEMENT
 - CB - CHORD BEARING
 - CH - CHORD DISTANCE
 - CL - CENTERLINE
 - D.B. - DEED BOOK
 - D.E. - DRAINAGE EASEMENT
 - D.S.E. - DRAINAGE SWALE EASEMENT
 - L - ARC LENGTH
 - L.A.E. - LIMITED ACCESS EASEMENT
 - L.E. - LANDSCAPE EASEMENT
 - L.M.A.E. - LAKE MAINTENANCE ACCESS EASEMENT
 - L.M.E. - LAKE MAINTENANCE EASEMENT
 - N.R. - NOT RADIAL
 - N.R.T.R. - NOT RADIAL TO REAR
 - N.T.S. - NOT TO SCALE
 - O.R.B. - OFFICIAL RECORD BOOK
 - O.E. - MAINTENANCE & ROOF OVERHANG EASEMENT
 - P.B. - PLAT BOOK
 - P.C.P. - PERMANENT CONTROL POINT
 - P.G.S. - PAGES
 - P.O.B. - POINT OF BEGINNING
 - P.O.C. - POINT OF COMMENCEMENT
 - P.S.L.U.E. - PORT ST. LUCIE UTILITY EASEMENT
 - P.S.M. - PROFESSIONAL SURVEYOR AND MAPPER
 - R - RADIUS
 - R/W - RIGHT-OF-WAY
 - S.F. - SQUARE FEET
 - S.T. - SURVEY TIE
 - U.E. - UTILITY EASEMENT
 - RAD - RADIAL LINE
 - U.E.-R.A. - UTILITY EASEMENT-RESTRICTED AREA
 - P.C. - POINT OF CURVATURE
 - P.T. - POINT OF TANGENCY
 - P.R.C. - POINT OF REVERSE CURVATURE
 - P.N.R. - POINT OF NON-RADIAL INTERSECTION
 - P.R.I. - POINT OF RADIAL INTERSECTION

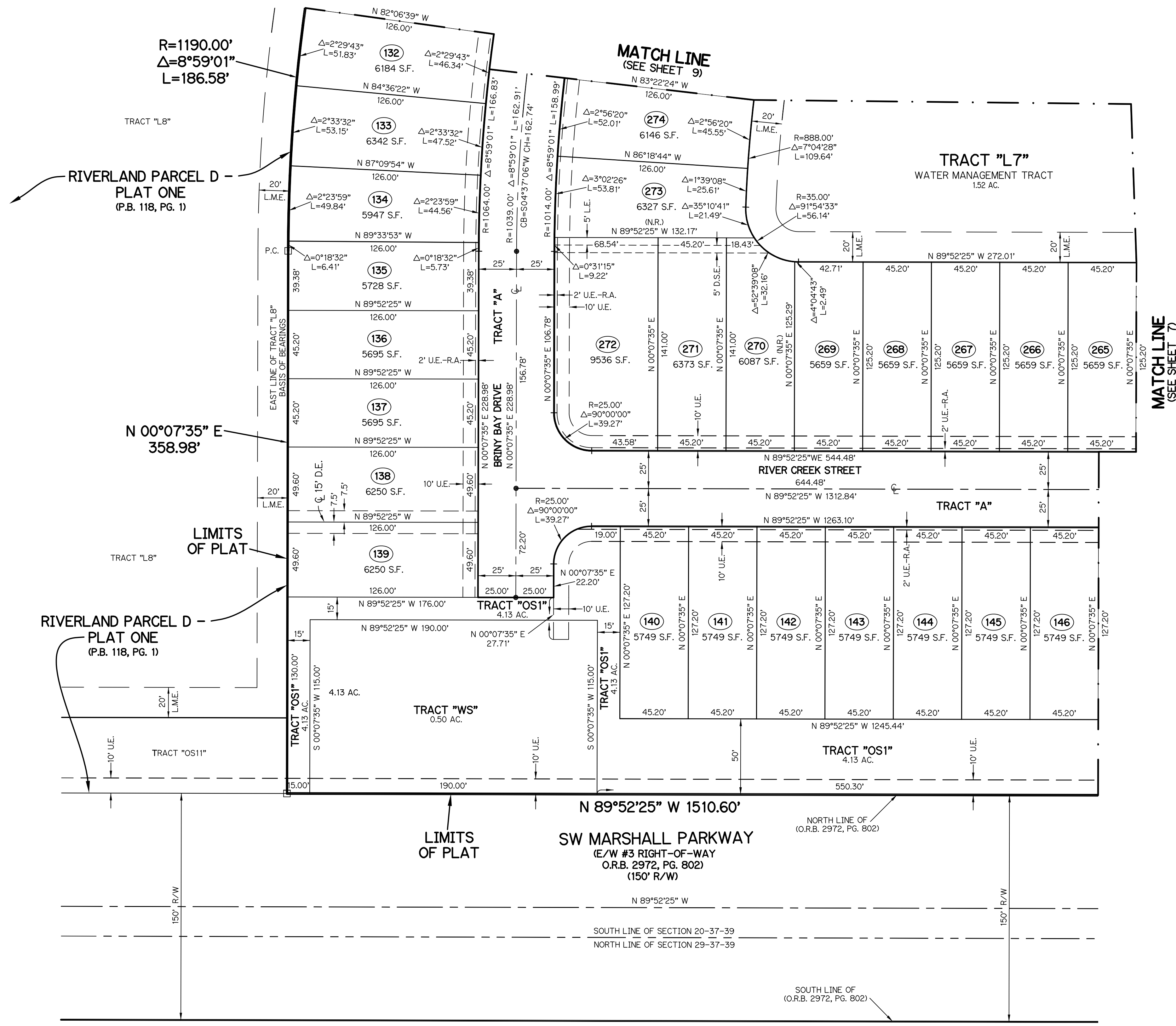
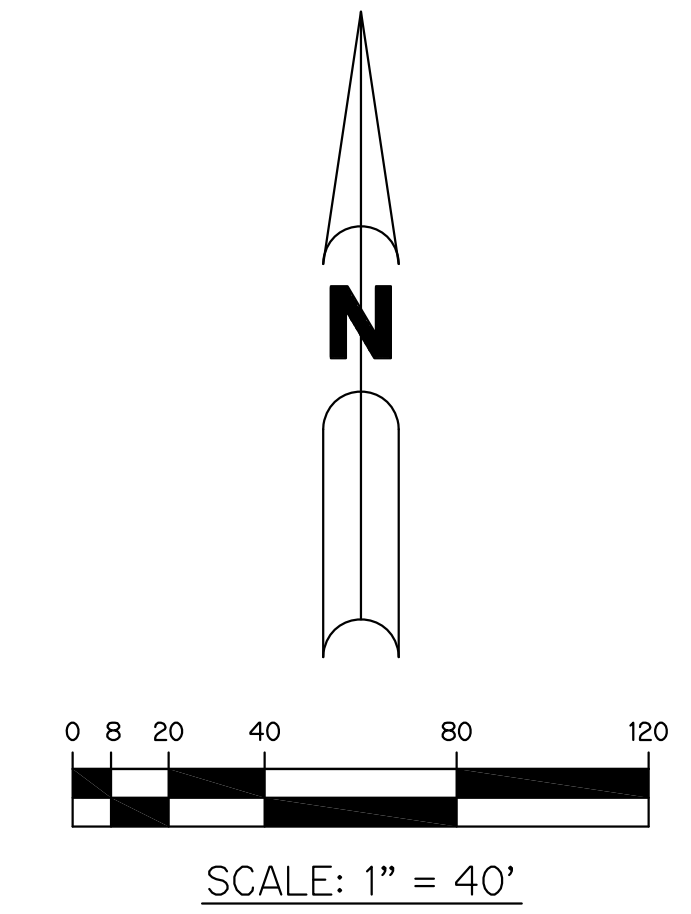


THIS INSTRUMENT WAS PREPARED BY
PERRY C. WHITE, P.S.M. 4213, STATE OF FLORIDA
SAND & HILLS SURVEYING, INC.
8461 LAKE WORTH ROAD, SUITE 410
LAKE WORTH, FLORIDA 33467
LB-7741

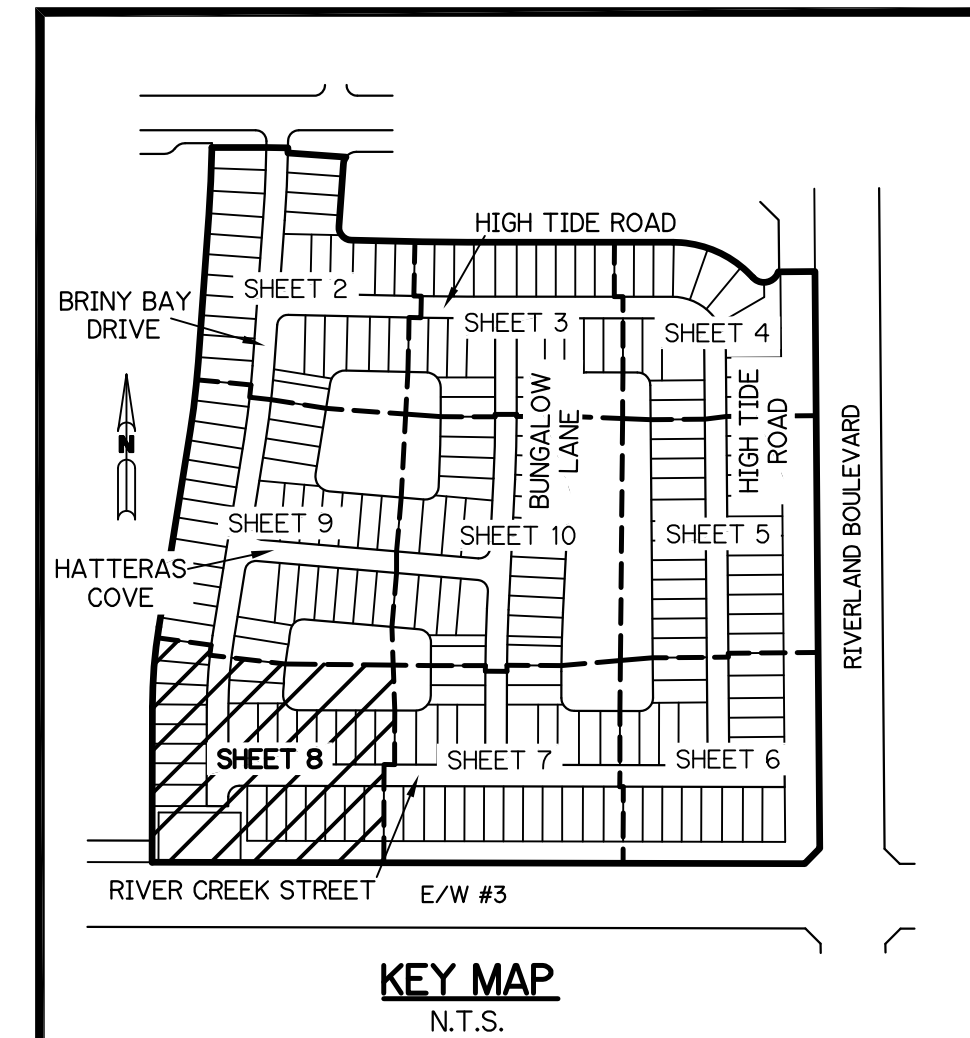
RIVERLAND PARCEL D - PLAT TWO

A PARCEL OF LAND LYING IN SECTION 20, TOWNSHIP 37 SOUTH,
RANGE 39 EAST, CITY OF PORT ST. LUCIE, ST. LUCIE COUNTY, FLORIDA

SHEET 8 OF 10



- LEGEND:**
- - SET PERMANENT REFERENCE MONUMENT
5/8" IRON ROD WITH 1.5" CAP
STAMPED PRM L.B. #7741
 - - FOUND PERMANENT REFERENCE MONUMENT
5/8" IRON ROD WITH 1.5" CAP
STAMPED PRM L.B. #7741
 - - SET PERMANENT CONTROL POINT
NAIL WITH 1.25" DISK STAMPED PCP L.B. #7741
 - - FOUND PERMANENT CONTROL POINT
NAIL WITH 1.25" DISK STAMPED PCP L.B. #7741
 - Δ - DELTA ANGLE
 - AC - ACRES
 - B.E. - BUFFER EASEMENT
 - CB - CHORD BEARING
 - CD - CHORD DISTANCE
 - CL - CENTERLINE
 - D.B. - DEED BOOK
 - D.E. - DRAINAGE EASEMENT
 - D.S.E. - DRAINAGE SWALE EASEMENT
 - L - ARC LENGTH
 - L.A.E. - LIMITED ACCESS EASEMENT
 - L.E. - LANDSCAPE EASEMENT
 - L.M.A.E. - LAKE MAINTENANCE ACCESS EASEMENT
 - L.M.E. - LAKE MAINTENANCE EASEMENT
 - N.R. - NOT RADIAL
 - N.R.T.R. - NOT RADIAL TO REAR
 - N.T.S. - NOT TO SCALE
 - O.R.B. - OFFICIAL RECORD BOOK
 - O.E. - MAINTENANCE & ROOF OVERHANG EASEMENT
 - P.B. - PLAT BOOK
 - P.C.P. - PERMANENT CONTROL POINT
 - P.S. - PAGES
 - P.O.B. - POINT OF BEGINNING
 - P.O.C. - POINT OF COMMENCEMENT
 - P.S.L.U.E. - PORT ST. LUCIE UTILITY EASEMENT
 - P.S.M. - PROFESSIONAL SURVEYOR AND MAPPER
 - R - RADIUS
 - R/W - RIGHT-OF-WAY
 - S.F. - SQUARE FEET
 - S.T. - SURVEY TIE
 - U.E. - UTILITY EASEMENT
 - RAD - RADIAL LINE
 - U.E.-R.A. - UTILITY EASEMENT-RESTRICTED AREA
 - P.C. - POINT OF CURVATURE
 - P.T. - POINT OF TANGENCY
 - P.R.C. - POINT OF REVERSE CURVATURE
 - P.N.R. - POINT OF NON-RADIAL INTERSECTION
 - P.R.I. - POINT OF RADIAL INTERSECTION

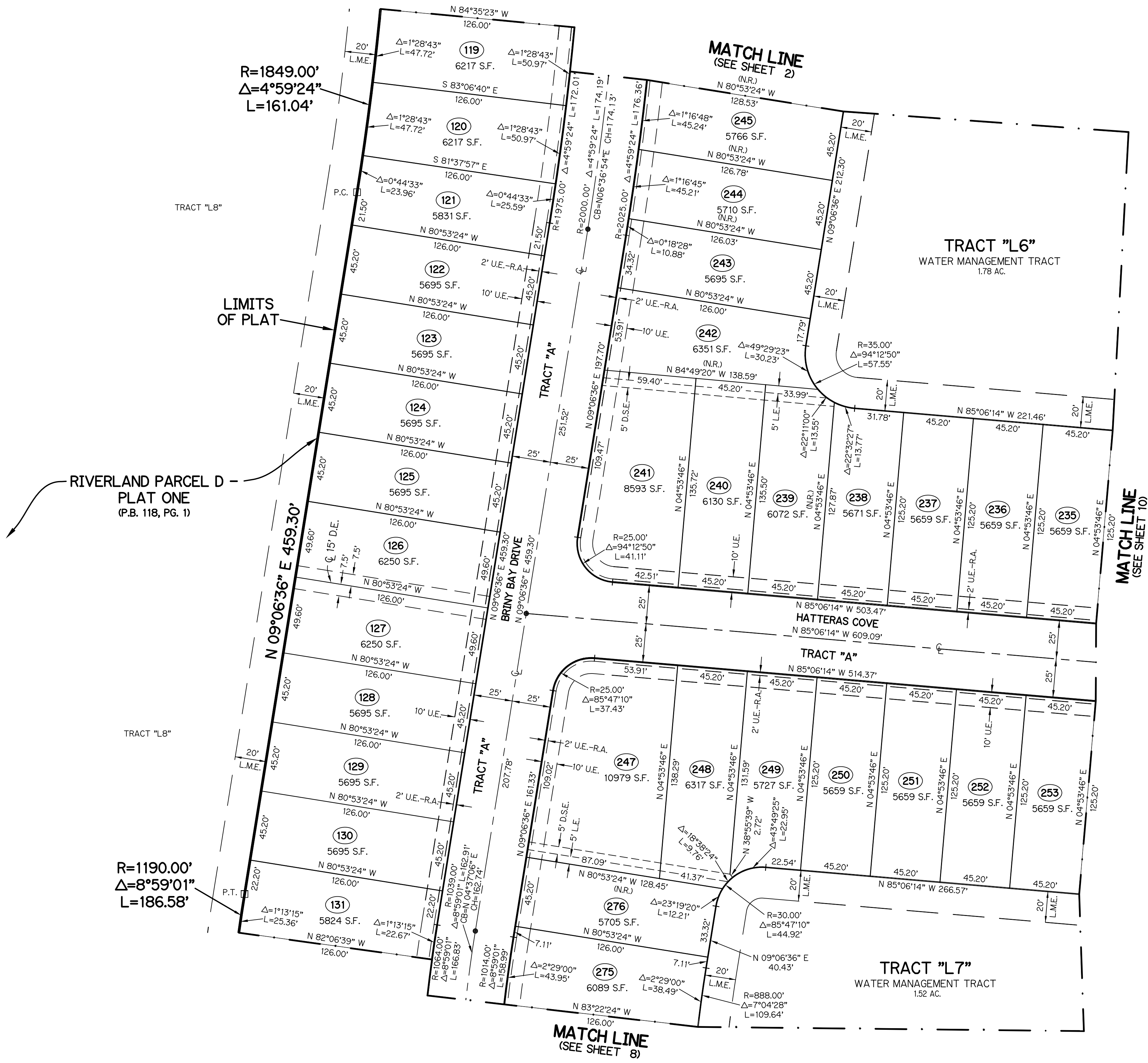
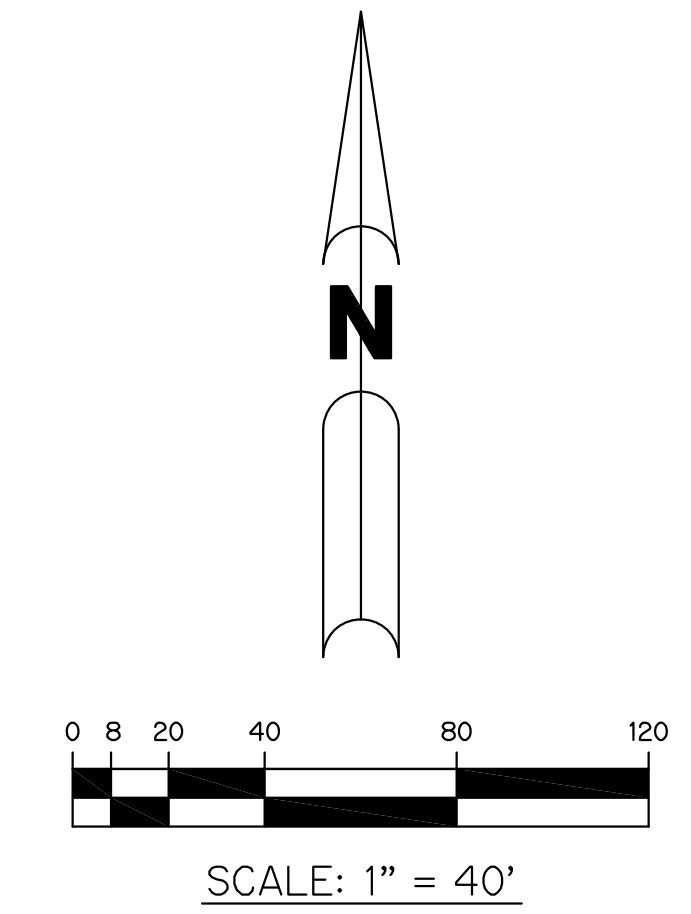


THIS INSTRUMENT WAS PREPARED BY
PERRY C. WHITE, P.S.M. 4213, STATE OF FLORIDA
SAND & HILLS SURVEYING, INC.
8461 LAKE WORTH ROAD, SUITE 410
LAKE WORTH, FLORIDA 33467
LB-7741

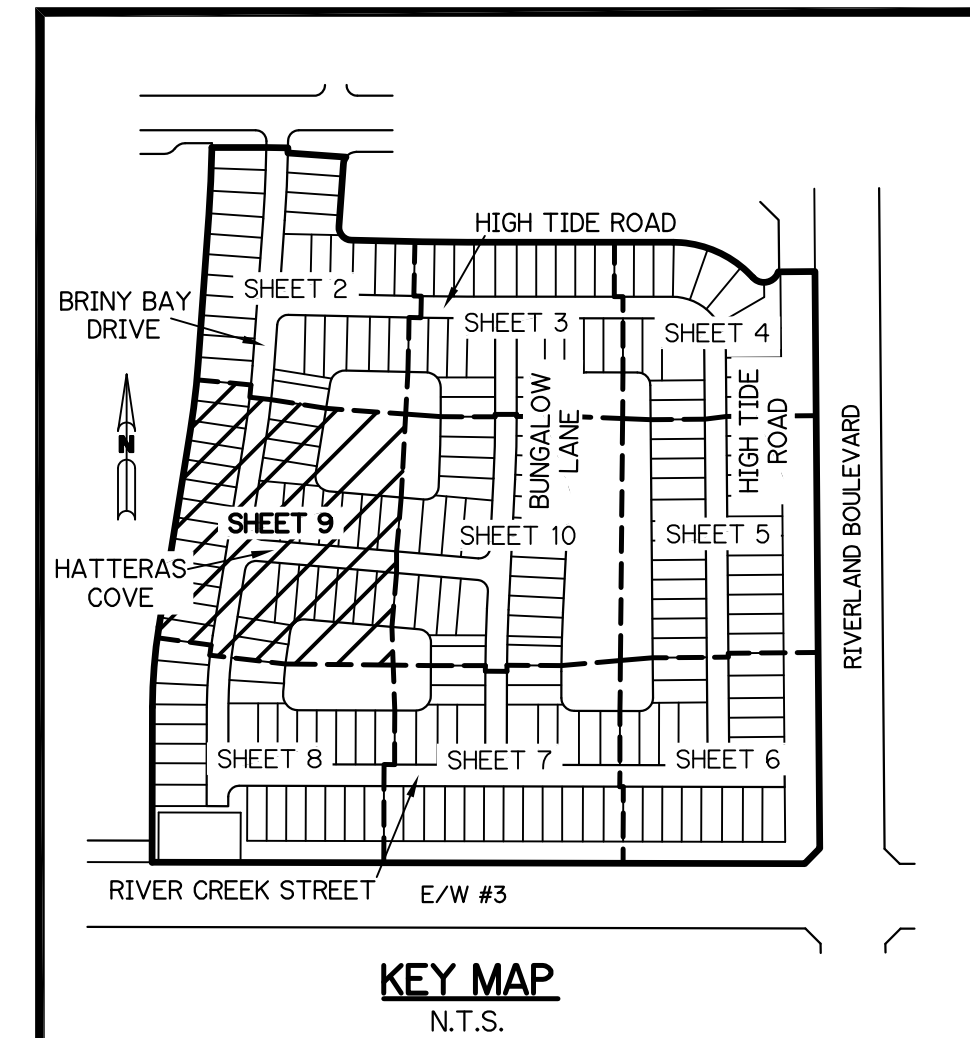
RIVERLAND PARCEL D - PLAT TWO

A PARCEL OF LAND LYING IN SECTION 20, TOWNSHIP 37 SOUTH,
RANGE 39 EAST, CITY OF PORT ST. LUCIE, ST. LUCIE COUNTY, FLORIDA

SHEET 9 OF 10



- LEGEND:**
- - SET PERMANENT REFERENCE MONUMENT
5/8" IRON ROD WITH 1.5" CAP
STAMPED PRM L.B. #7741
 - - FOUND PERMANENT REFERENCE MONUMENT
5/8" IRON ROD WITH 1.5" CAP
STAMPED PRM L.B. #7741
 - - SET PERMANENT CONTROL POINT
NAIL WITH 1.25" DISK STAMPED PCP L.B. #7741
 - - FOUND PERMANENT CONTROL POINT
NAIL WITH 1.25" DISK STAMPED PCP L.B. #7741
 - Δ - DELTA ANGLE
 - AC. - ACRES
 - B.E. - BUFFER EASEMENT
 - CB - CHORD BEARING
 - CH - CHORD DISTANCE
 - CL - CENTERLINE
 - D.B. - DEED BOOK
 - D.E. - DRAINAGE EASEMENT
 - D.S.E. - DRAINAGE SWALE EASEMENT
 - L - ARC LENGTH
 - L.A.E. - LIMITED ACCESS EASEMENT
 - L.E. - LANDSCAPE EASEMENT
 - L.M.A.E. - LAKE MAINTENANCE ACCESS EASEMENT
 - L.M.E. - LAKE MAINTENANCE EASEMENT
 - N.R. - NOT RADIAL
 - N.R.T.R. - NOT RADIAL TO REAR
 - N.T.S. - NOT TO SCALE
 - O.R.B. - OFFICIAL RECORD BOOK
 - O.E. - MAINTENANCE & ROOF OVERHANG EASEMENT
 - P.B. - PLAT BOOK
 - P.C.P. - PERMANENT CONTROL POINT
 - P.S. - PAGES
 - P.O.B. - POINT OF BEGINNING
 - P.O.C. - POINT OF COMMENCEMENT
 - P.S.L.U.E. - PORT ST. LUCIE UTILITY EASEMENT
 - P.S.M. - PROFESSIONAL SURVEYOR AND MAPPER
 - R - RADIUS
 - R/W - RIGHT-OF-WAY
 - S.F. - SQUARE FEET
 - S.T. - SURVEY TIE
 - U.E. - UTILITY EASEMENT
 - RAD - RADIAL LINE
 - U.E.-R.A. - UTILITY EASEMENT-RESTRICTED AREA
 - P.C. - POINT OF CURVATURE
 - P.T. - POINT OF TANGENCY
 - P.R.C. - POINT OF REVERSE CURVATURE
 - P.N.R. - POINT OF NON-RADIAL INTERSECTION
 - P.R.I. - POINT OF RADIAL INTERSECTION

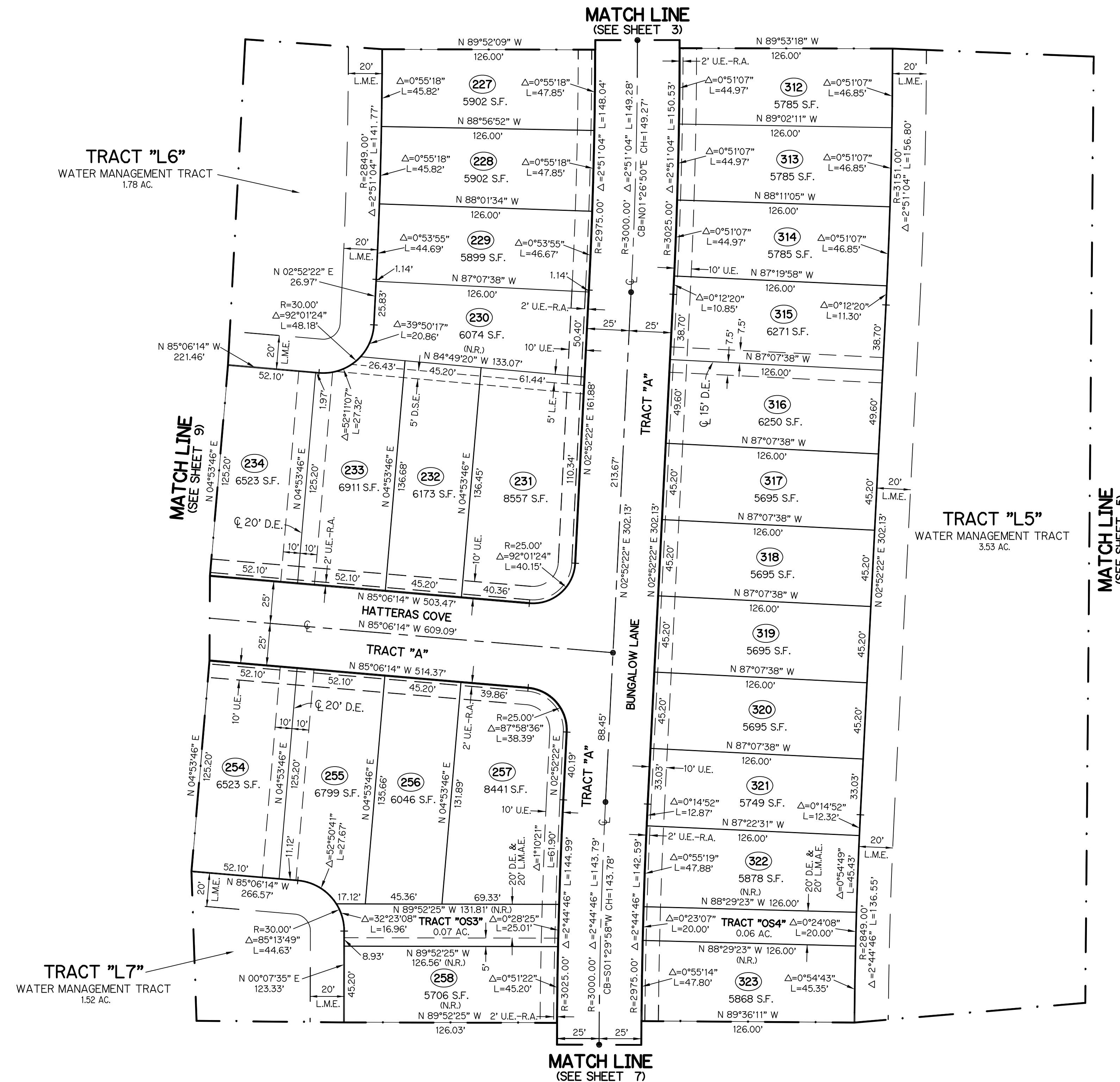
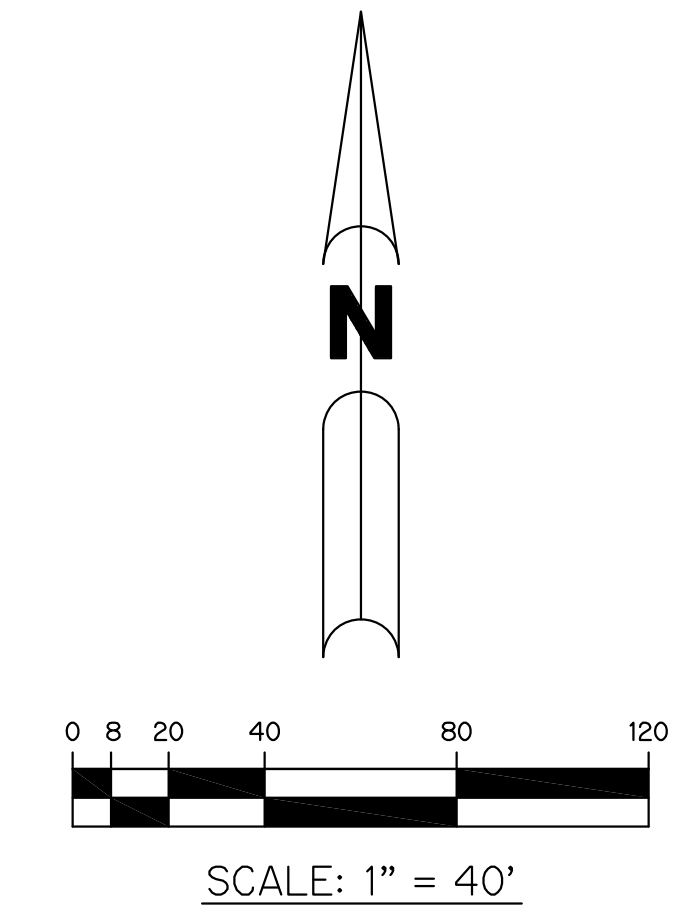


THIS INSTRUMENT WAS PREPARED BY
PERRY C. WHITE, P.S.M. 4213, STATE OF FLORIDA
SAND & HILLS SURVEYING, INC.
8461 LAKE WORTH ROAD, SUITE 410
LAKE WORTH, FLORIDA 33467
LB-7741

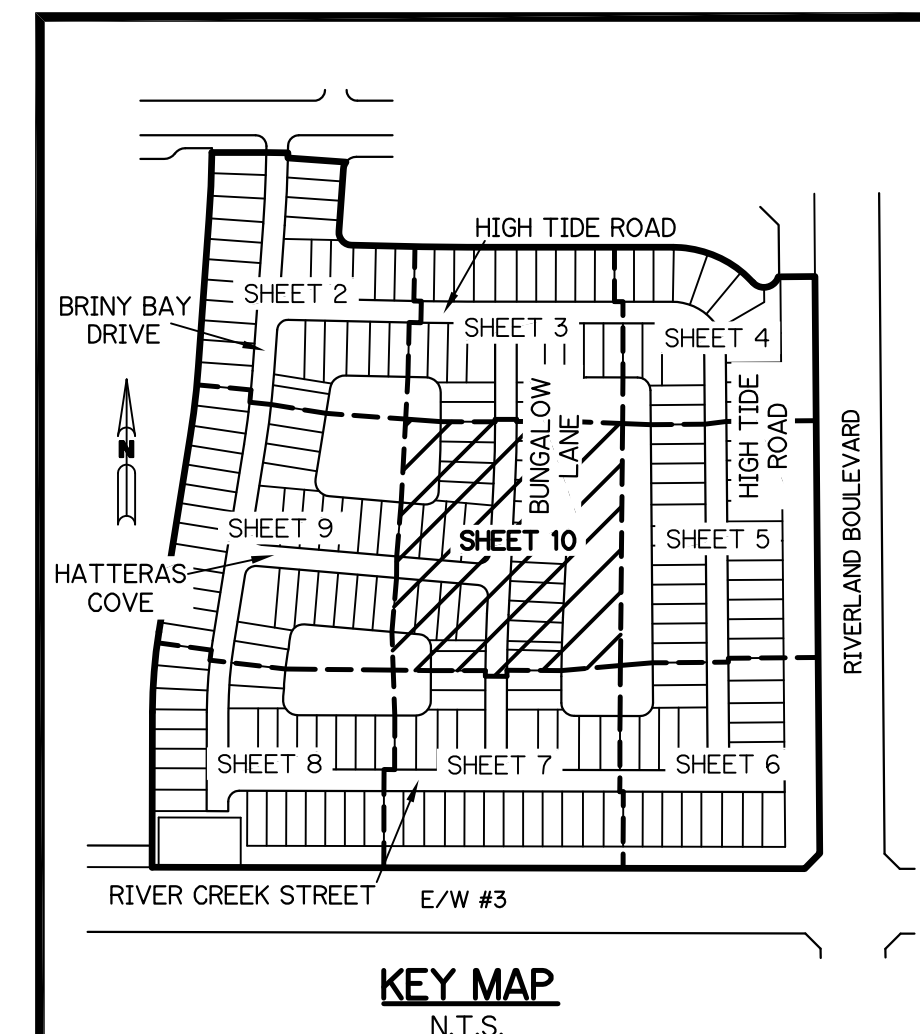
RIVERLAND PARCEL D - PLAT TWO

A PARCEL OF LAND LYING IN SECTION 20, TOWNSHIP 37 SOUTH,
RANGE 39 EAST, CITY OF PORT ST. LUCIE, ST. LUCIE COUNTY, FLORIDA

SHEET 10 OF 10



- LEGEND:**
- - SET PERMANENT REFERENCE MONUMENT
5/8" IRON ROD WITH 1.5" CAP
STAMPED PRM L.B. #7741
 - - FOUND PERMANENT REFERENCE MONUMENT
5/8" IRON ROD WITH 1.5" CAP
STAMPED PRM L.B. #7741
 - - SET PERMANENT CONTROL POINT
NAIL WITH 1.25" DISK STAMPED PCP L.B. #7741
 - - FOUND PERMANENT CONTROL POINT
NAIL WITH 1.25" DISK STAMPED PCP L.B. #7741
 - Δ - DELTA ANGLE
 - AC. - ACRES
 - B.E. - BUFFER EASEMENT
 - CB - CHORD BEARING
 - CH - CHORD DISTANCE
 - CL - CENTERLINE
 - D.B. - DEED BOOK
 - D.E. - DRAINAGE EASEMENT
 - D.S.E. - DRAINAGE SWALE EASEMENT
 - L - ARC LENGTH
 - L.A.E. - LIMITED ACCESS EASEMENT
 - L.E. - LANDSCAPE EASEMENT
 - L.M.A.E. - LAKE MAINTENANCE ACCESS EASEMENT
 - L.M.E. - LAKE MAINTENANCE EASEMENT
 - N.R. - NOT RADIAL
 - N.R.T.R. - NOT RADIAL TO REAR
 - N.T.S. - NOT TO SCALE
 - O.R.B. - OFFICIAL RECORD BOOK
 - O.E. - MAINTENANCE & ROOF OVERHANG EASEMENT
 - P.B. - PLAT BOOK
 - P.C.P. - PERMANENT CONTROL POINT
 - P.G.S. - PAGES
 - P.O.B. - POINT OF BEGINNING
 - P.O.C. - POINT OF COMMENCEMENT
 - P.S.L.U.E. - PORT ST. LUCIE UTILITY EASEMENT
 - P.S.M. - PROFESSIONAL SURVEYOR AND MAPPER
 - R - RADIUS
 - R/W - RIGHT-OF-WAY
 - S.F. - SQUARE FEET
 - S.T. - SURVEY TIE
 - U.E. - UTILITY EASEMENT
 - U.E.-R.A. - UTILITY EASEMENT-RESTRICTED AREA
 - P.C. - POINT OF CURVATURE
 - P.T. - POINT OF TANGENCY
 - P.R.C. - POINT OF REVERSE CURVATURE
 - P.N.R. - POINT OF NON-RADIAL INTERSECTION
 - P.R.I. - POINT OF RADIAL INTERSECTION



THIS INSTRUMENT WAS PREPARED BY
PERRY C. WHITE, P.S.M. 4213, STATE OF FLORIDA
SAND & HILLS SURVEYING, INC.
8461 LAKE WORTH ROAD, SUITE 410
LAKE WORTH, FLORIDA 33467
LB-7741