

RIVER FOOD GARDEN - PORT ST. LUCIE

WESTMORELAND PARK, PORT ST. LUCIE, FL 34952

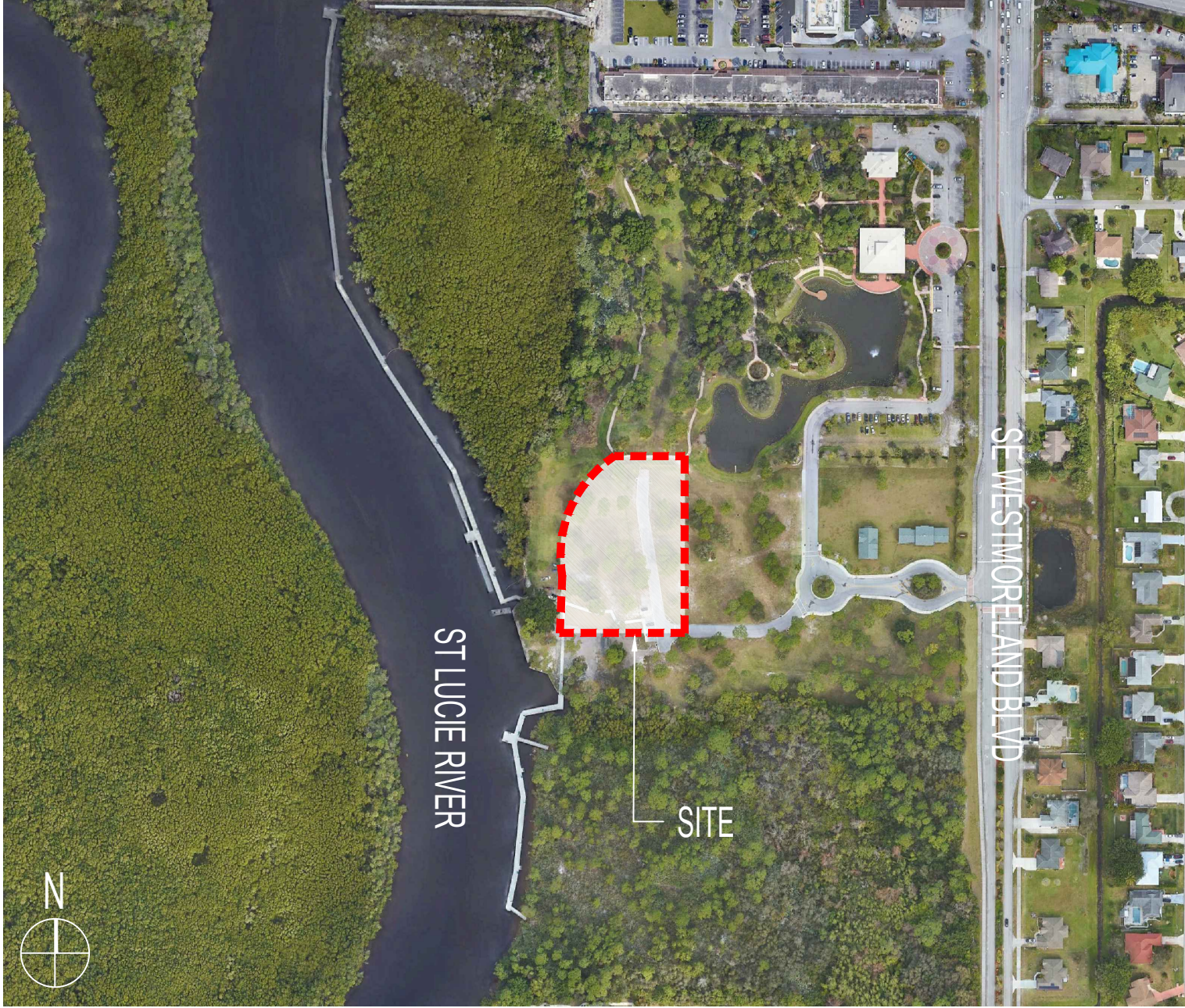
SITE PLAN SUBMITTAL

ARQUITECTONICA GEO

LANDSCAPE ARCHITECTS

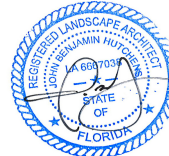
2900 OAK AVENUE
MIAMI, FLORIDA 33133
PHONE: 305.372.1812 FAX: 305.372.1175
WEBSITE: www.arquitectonicago.com

INDEX OF DRAWINGS		
SITE PLAN SUBMITTAL		
1	L-000	LANDSCAPE INDEX
2	L-001	LANDSCAPE IMAGES
3	L-002	PROJECT PHASES
4	L-110	RENDERED PLAN
5	L-111	HARDSCAPE PLAN
6	L-112	TREE PLAN
7	L-113	SHRUB AND GROUNDCOVER PLAN
8	L-500	PLANTING DETAILS

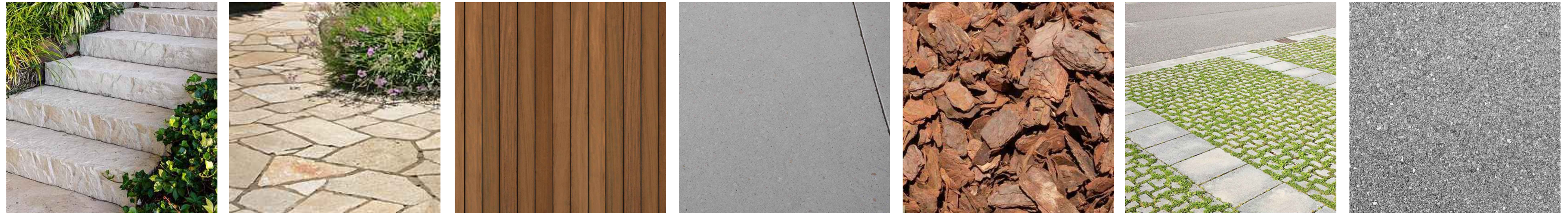


PSLUSD # 5001-31B

P17-004-A2



HARDSCAPE MATERIALS



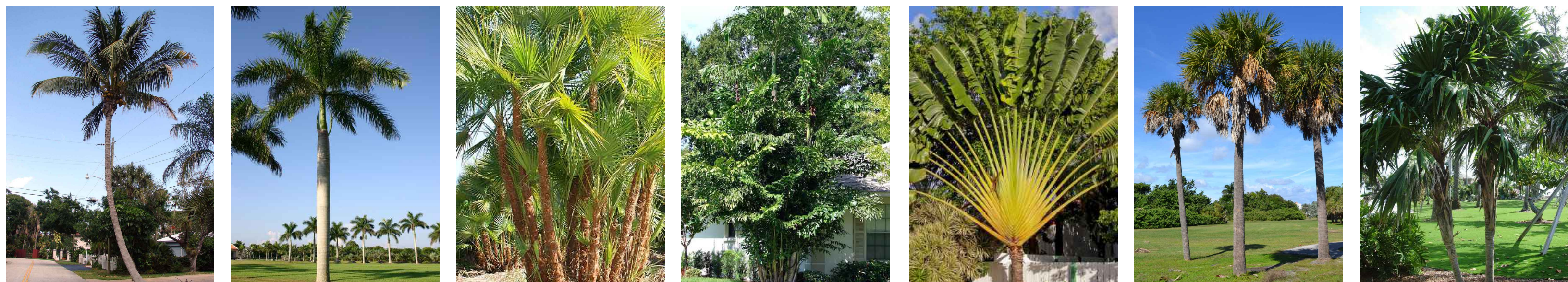
CAP ROCK STEPS FLAGSTONE PAVING WOOD DECK C.I.P. CONCRETE MULCH - PINE BARK NUGGETS PERMEABLE PAVERS (VEHICULAR) PERMEABLE CONCRETE (VEHICULAR)

TREES



BUCIDA BUCERAS BLACK OLIVE TREE *BURSERA SIMARUBA* GUMBO LIMBO *CASSIA BAKERIANA* WISHING TREE *CEIBA PENTANDRA* KAPOK TREE *CLUSIA ROSEA* AUTOGRAPH TREE *COCCOLOBA DIVERSIFOLIA* PIGEON PLUM *COCCOLOBA UVIFERA - MULTI TRUNK* SEA GRAPE *CONOCARPUS ERECTUS - MULTI T.* GREEN BUTTONWOOD *CONOCARPUS ERECTUS* SILVER BUTTONWOOD *DELONIX REGIA* ROYAL POINCIANA *FICUS AUREA* STRANGLER FIG *LYSILOMA LATISILIQUUM* FALSE TAMARIND *PACHIRA AQUATICA* MONEY TREE

PALMS



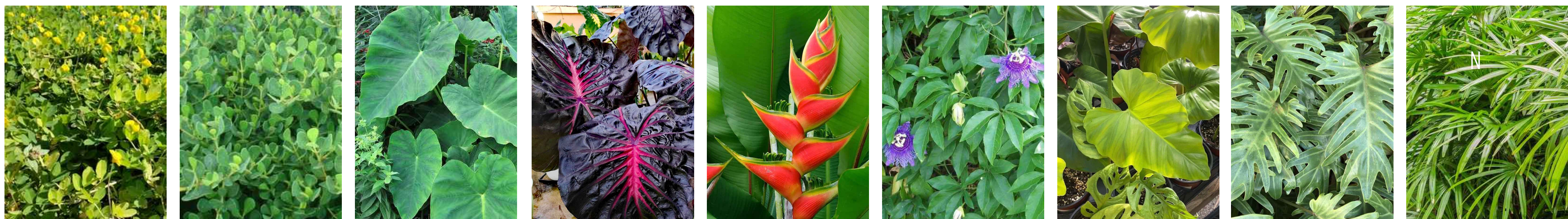
COCOS NUCIFERA COCONUT PALM *ROYSTONIA ELATA* FLORIDA ROYAL PALM *ACOELORRHAPHE WRIGHTII* PAUROTIS PALM *CARYOTA MITIS* FISHTAIL PALM *RAVENALA MADAGASCARIENSIS* TRAVELER'S TREE *SABAL PALMETTO* CABBAGE PALMETTO *THRINAX RADIATA* FLORIDA THATCH PALM

SHRUBS - NATIVE AND ADAPTED



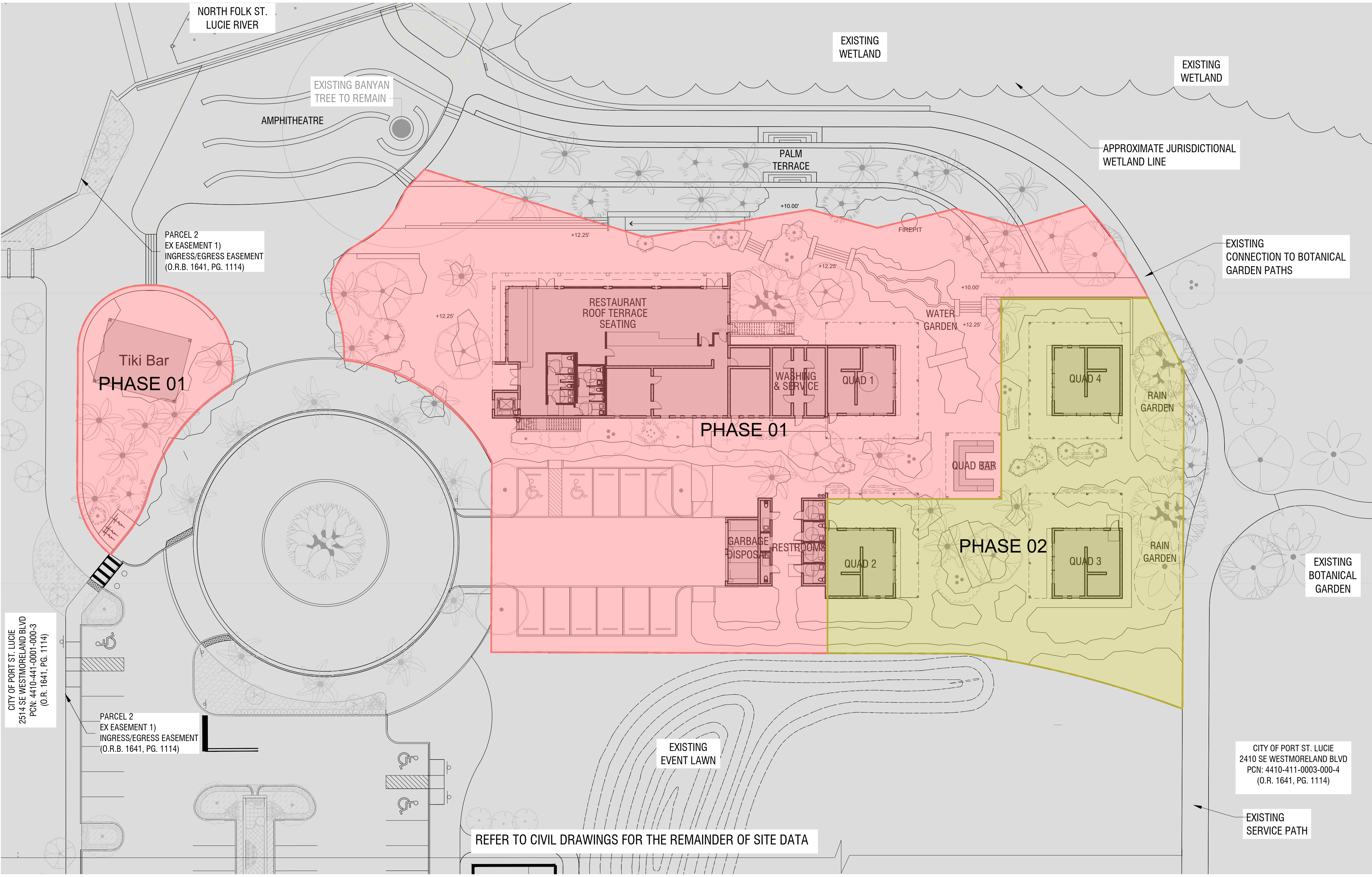
ALPINIA ZERUMBET SHELL GINGER *CHRYSOBALANUS ICACO* COCOPLUM *HYMENOCALIS LATIFOLIA* SPIDER LILY *LANTANA INVOLUCRATA* BUTTONSAGE *MONSTERA DELICIOSA* SPLIT-LEAF PHILODENDRON *MUHLENBERGIA CAPILLARIS* PINK MUHLY GRASS *NEPHROLEPIS BISERRATA* MACHO FERN *NEPHROLEPIS EXALTATA* BOSTON FERN *PHILODENDRON BURLE-MARXII* BURLE MARX PHILODENDRON *PHILODENDRON SELLOUM* SELLOUM PHILODENDRON *RANDIA ACULEATA* WHITE INDIGO BERRY *SERENOA REPENS* GREEN SAW PALMETTO *SERENOA REPENS 'GINEREA'* SILVER SAW PALMETTO *TRIPSACUM DACTYLOIDES* FAKAHATCHEE GRASS

SHRUBS - TROPICAL AND EXOTIC



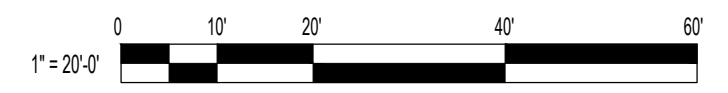
ARACHIS GLABRATA PERENNIAL PEANUT *CLUSIA ROSEA 'NANA'* DWARF PITCH APPLE *COLOCASIA ESCULENTA* GREEN TARO *HELICONIA PSITTACORUM* PARROT HELICONIA *HELICONIA ROSTRATA* LOBSTER CLAW *PASSIFLORA INCARNATA* PASSION FLOWER VINE *PHILODENDRON WILSONII* *PHILODENDRON XANADU* XANADU PHILODENDRON *RHAPIS EXCELSA* LADY PALM

PSLUSD # 5001-31B P17-004-A2

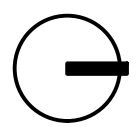
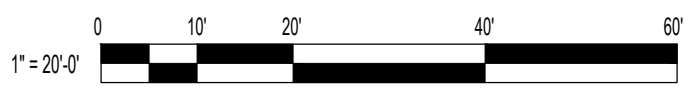
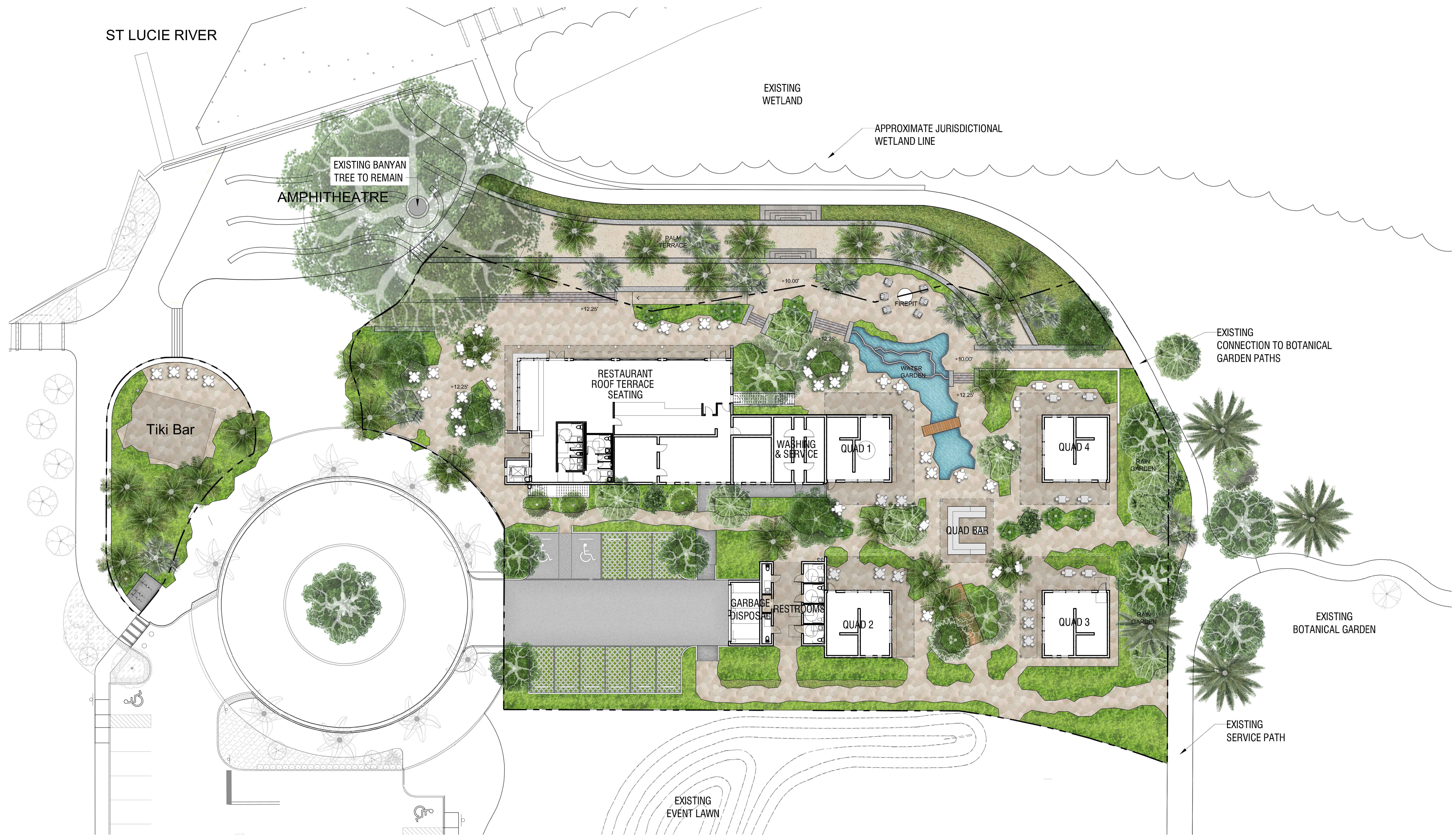


PROJECT AREAS

	PHASE 01 37,165 SF
	PHASE 02 13,610 SF

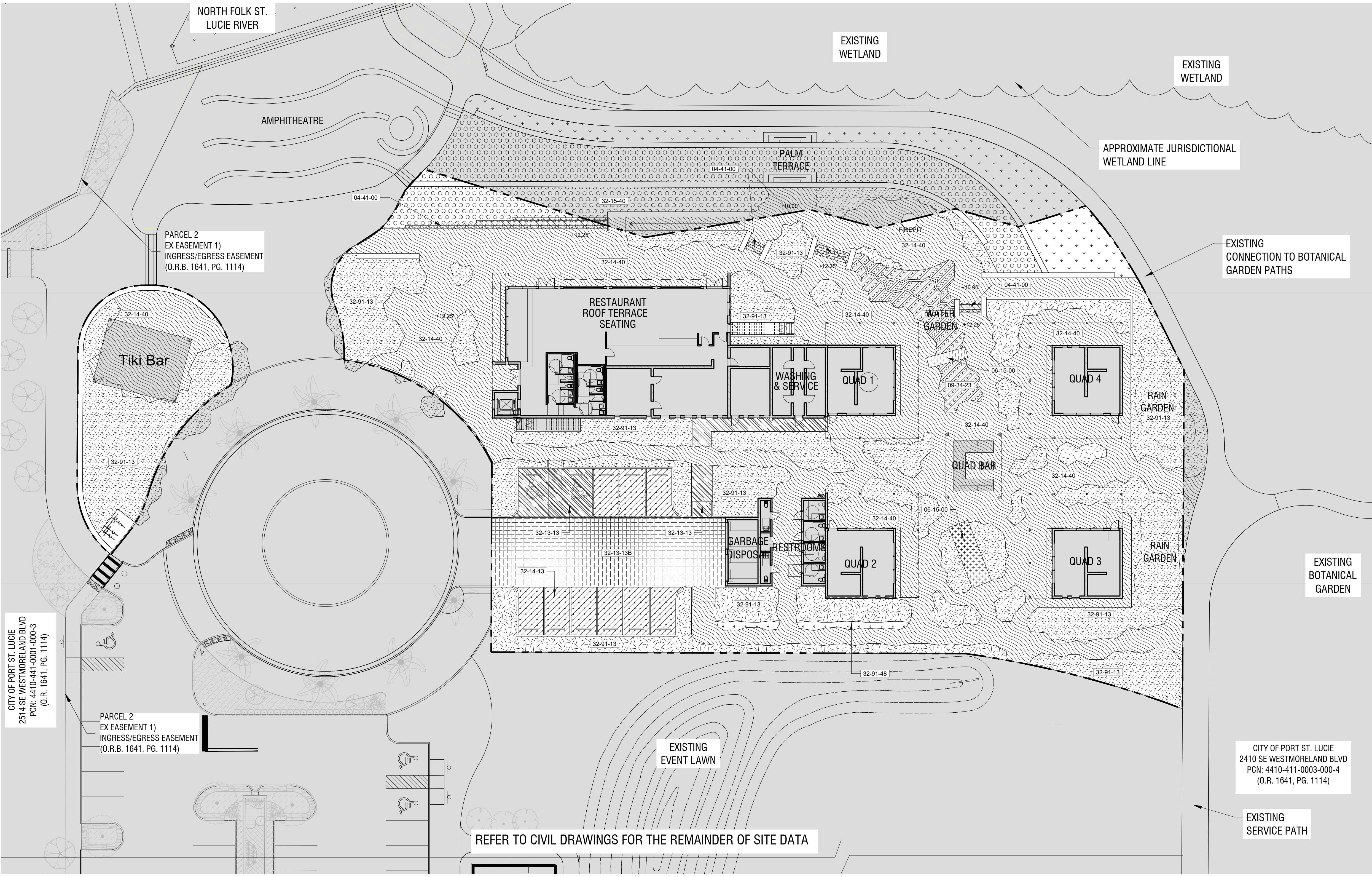


PSLUSD # 5001-31B P17-004-A2



PSLUSD # 5001-31B

P17-004-A2



CITY OF PORT ST. LUCIE
2514 SE WESTMORELAND BLVD
PCN: 4410-441-0001-000-3
(O.R. 1641, PG. 1114)

PARCEL 2
EX EASEMENT 1)
INGRESS/EGRESS EASEMENT
(O.R.B. 1641, PG. 1114)

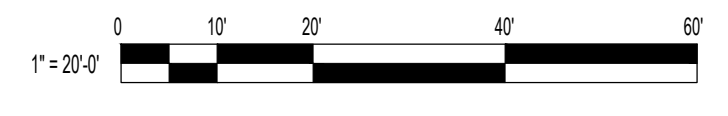
REFER TO CIVIL DRAWINGS FOR THE REMAINDER OF SITE DATA

CITY OF PORT ST. LUCIE
2410 SE WESTMORELAND BLVD
PCN: 4410-411-0003-000-4
(O.R. 1641, PG. 1114)

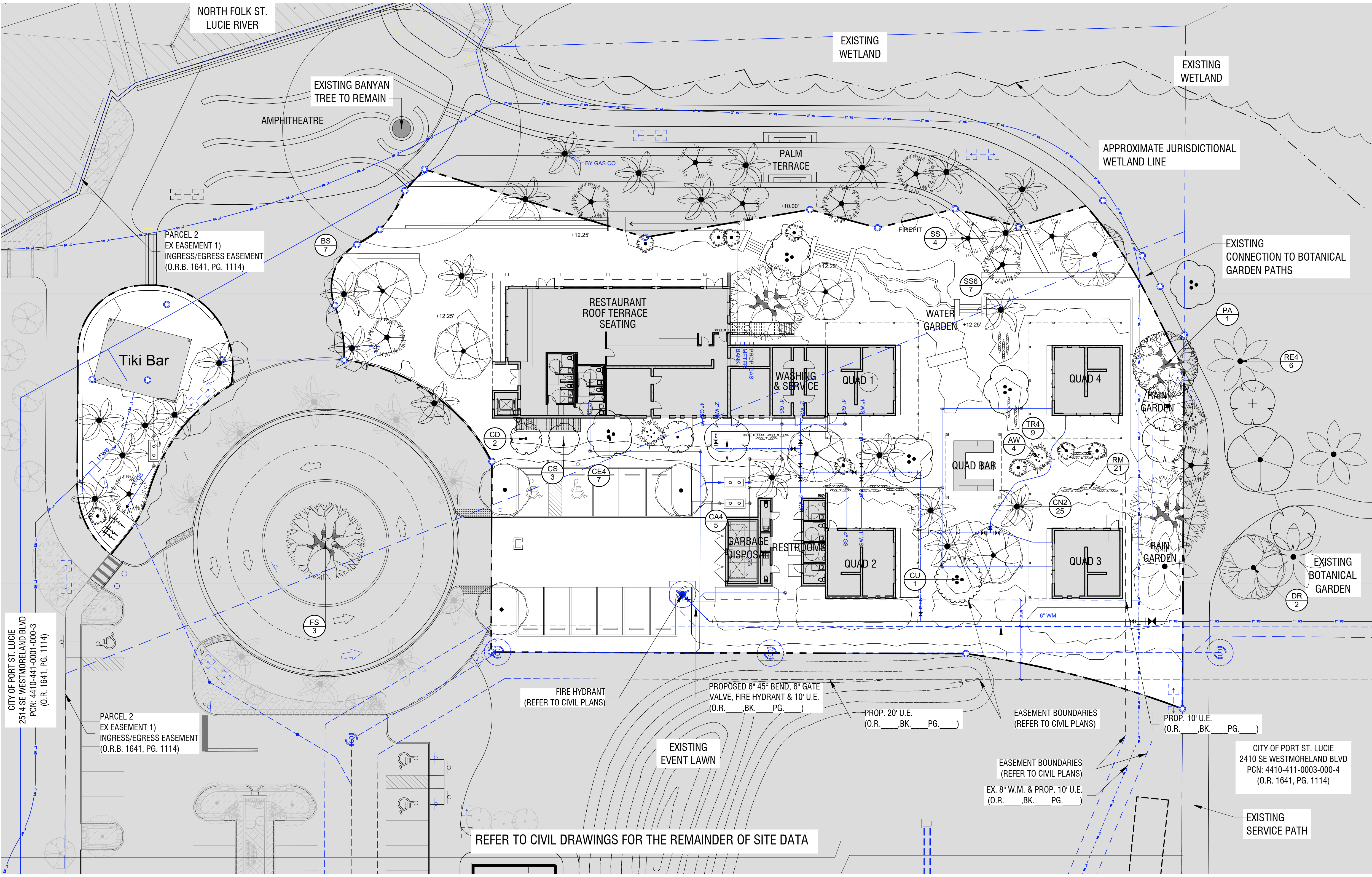
- GENERAL NOTES:**
- G.C. TO PROVIDE FLOOR FINISH MATERIAL SAMPLES OF EACH TYPE NOTED ON THE HARDSCAPE SCHEDULE FOR REVIEW AND APPROVAL.
 - G.C. TO PROVIDE EXTERIOR FLOOR FINISH MATERIAL DYNAMIC COEFFICIENT (DCOF) TEST RESULTS AS PER ANS I 137.1 MATERIALS MUST BE A MINIMUM OF .60 DCOF FOR DECKS AND 0.80 DCOF FOR HANDICAP RAMPS WHEN WET TO BE APPROVED. G.C. TO FOLLOW FLOOR FINISH MANUFACTURER INSTALLATION SPECIFICATIONS AND THE TILE COUNCIL OF NORTH AMERICA, INC. (TCNA) RECOMMENDATIONS.
 - G.C. TO PROVIDE A FLOOR FINISH INSTALLATION SUBMITTAL FOR EACH FLOOR FINISH TYPE NOTED ON THE HARDSCAPE SCHEDULE.
 - GROUND LEVEL PAVING MATERIALS ARE TO HAVE A MINIMUM SOLAR REFLECTANCE OF 0.30 PER ARTICLE 3, SECTION 3.13.2 (p).
 - ALL FLOOR DRAIN COVERS TO BE REVIEWED BY LANDSCAPE ARCHITECT.
 - FLOOR DECKS SLOPES SHALL BE 1% MIN. TO 2% MAX CROSS SLOPE.
 - SLOPE 2% MIN. TO PLANTER DRAINS.
 - PROPOSED GRADING TO BE CONFIRM WITH FIELD CONDITION BY G.C. AND MUST COMPLY WITH ALL BUILDING CODES.
 - G.C. TO CONTACT LANDSCAPE ARCHITECT AND CIVIL ENGINEER IF THERE ARE ANY GRADING DISCREPANCIES IN THE FIELD.
 - REFER TO CIVIL AND ARCHITECTURE DRAWINGS FOR DRAINAGE AND GRADING PLANS.

HARDSCAPE SCHEDULE		
SYMBOL	DESCRIPTION	QTY
04 MASONRY		
04-41-00	ITEM: Cap Rock Steps APPLICATION: Stairs	333 sf
Wood Decking		
06-15-00	ITEM: Thermally Modified Wood Decking APPLICATION: Bridges / Paths	250 sf
09-34-23		
09-34-23	ITEM: Water Feature Finish APPLICATION: Water Feature	915 sf
32 EXTERIOR IMPROVEMENTS		
32-13-13	ITEM: C.I.P. Concrete APPLICATION: Service Area and ADA Parking Spots	1,005 sf
32-13-13B	ITEM: Pervious C.I.P. Concrete (Vehicular Rated) APPLICATION: Driveway	2,283 sf
32-14-13	ITEM: Permeable Pavers (Vehicular Rated) APPLICATION: Parking Spots	1,523 sf
32-14-40	ITEM: Flagstone APPLICATION: Site	21,072 sf
32-91-13	ITEM: Mulching APPLICATION: Planting Areas	14,337 sf
32-91-48	ITEM: SOD APPLICATION: Terrace	1,962 sf

HARDSCAPE SCHEDULE - OUTSIDE OF PROPERTY		
SYMBOL	DESCRIPTION	QTY
32 EXTERIOR IMPROVEMENTS		
32-14-40	ITEM: Flagstone APPLICATION: Site	226 sf
32-15-40	ITEM: Course Coquina Sand APPLICATION: Terrace	3,424 sf
32-91-13	ITEM: Mulching APPLICATION: Planting Areas	482 sf
32-91-48	ITEM: SOD APPLICATION: Terrace	2,468 sf



PSLUSD # 5001-31B P17-004-A2



TREES SCHEDULE

TREES	CODE	QTY	BOTANICAL NAME	COMMON NAME	CONT	CAL	SIZE	FIELD4
	BB2	2	Bucida buceras	Black Olive Tree	16' OA	8'	4"	
	BS	5	Bursera simaruba	Gumbo Limbo	20' OA	16'	8"	
	CA4	2	Clusia rosea	Autograph Tree	16'	8'	4"	
	CD	2	Coccoloba diversifolia	Pigeon Plum	12'-14'	6'	2"	
	CU	1	Coccoloba uvifera Multi Trunk;	Sea Grape	18' OA	15'	4"	
	CE4	4	Conocarpus erectus Multi trunk	Green Buttonwood	14'-16' OA	8'	2"	Yes
	CS	1	Conocarpus erectus sericeus Multi-Trunk;	Silver Button Wood	12'-14'	6'	2"	
	DR	1	Delonix regia	Royal Poinciana	16' OA	8'	4"	
	FS	2	Ficus aurea	Strangler Fig	25' OA	20'	15"	
	LW	2	Lysiloma latisiliquum	False Tamarind	16' OA	8'	4"	
	PA	1	Pachira aquatica	Money Tree	25'	15'	12"	

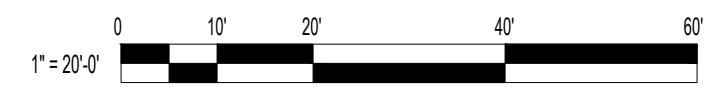
PALM TREES	CODE	QTY	BOTANICAL NAME	COMMON NAME	CONT	CAL	SIZE	FIELD4
	AW	2	Acoelorrhaphes wrightii Multi-trunk	Paurotis Palm	15'	8'		
	CN2	16	Cocos nucifera	Coconut Palm	15' Gray Wood			
	RM	20	Ravenala madagascariensis Cluster palms of varying heights as shown	Traveler's Tree	10'	15'	N	
	RE4	1	Roystonea elata	Florida Royal Palm	20'-25'		N	
	SS	2	Sabal palmetto Character Sabals, C-curve, S-curve	Cabbage Palmetto	15' OA		Y	
	SS6	3	Sabal palmetto Curved trunk	Cabbage Palmetto	22' OA			
	TR4	9	Thrinax radiata	Florida Thatch Palm	6'-8'		25G	

TREES SCHEDULE- OUTSIDE OF PROPERTY								
PALM TREES	CODE	QTY	BOTANICAL NAME	COMMON NAME	CONT	CAL	SIZE	FIELD4
	AW	1	Acoelorrhaphes wrightii Multi-trunk	Paurotis Palm	15'	8'		
	CN2	9	Cocos nucifera	Coconut Palm	15' Gray Wood			
	RE4	3	Roystonea elata	Florida Royal Palm	20'-25'		N	
	SS	2	Sabal palmetto Character Sabals, C-curve, S-curve	Cabbage Palmetto	15' OA		Y	
	SS6	4	Sabal palmetto Curved trunk	Cabbage Palmetto	22' OA			

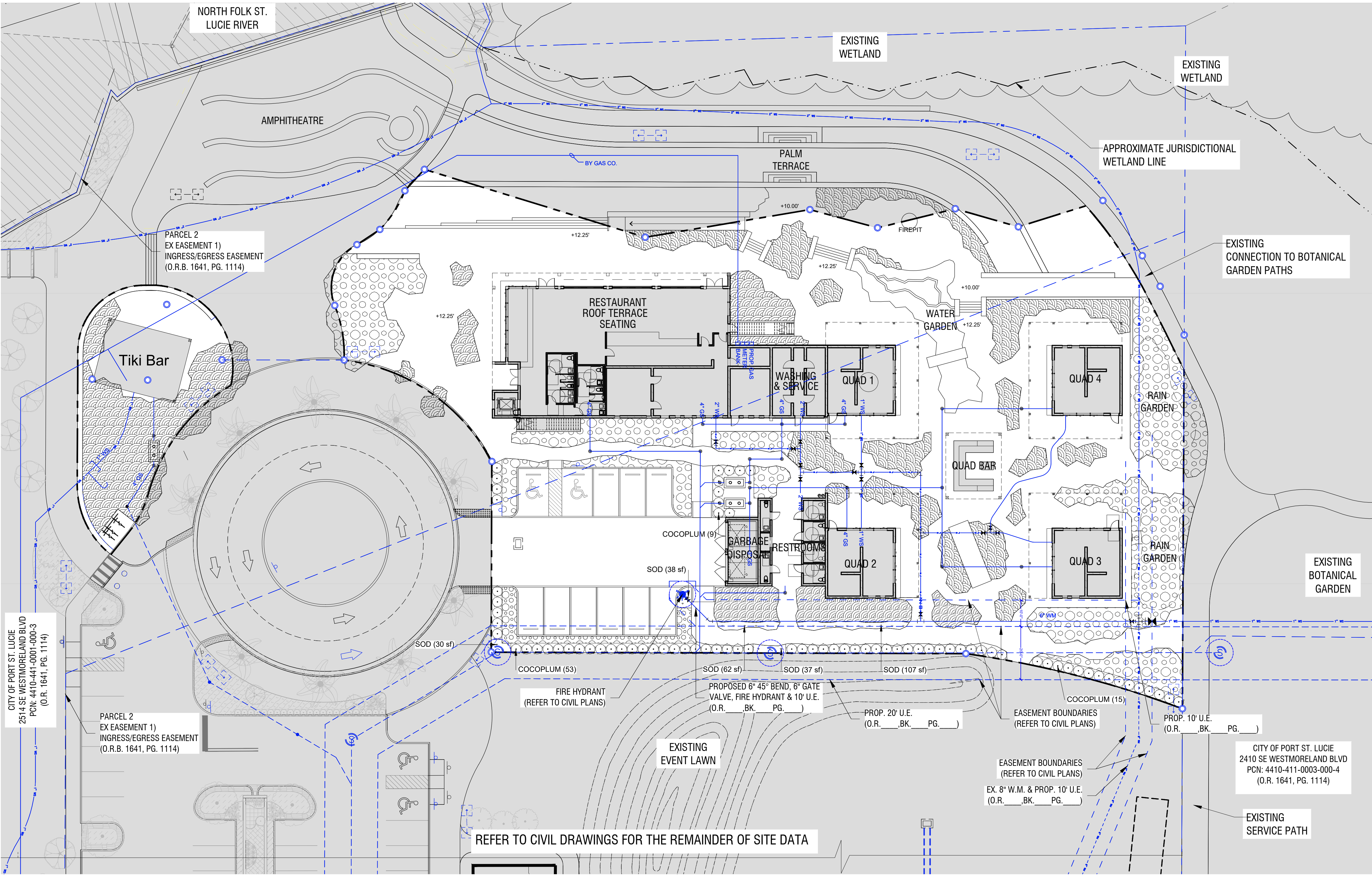
TREES SCHEDULE- OUTSIDE OF PROPERTY								
TREES	CODE	QTY	BOTANICAL NAME	COMMON NAME	CONT	CAL	SIZE	FIELD4
	CP	1	Ceiba pentandra	Kapok Tree	25'-30'	15'	12"	
	CA4	2	Clusia rosea	Autograph Tree	16'	8'	4"	
	CE4	1	Conocarpus erectus Multi trunk	Green Buttonwood	14'-16' OA	8'	2"	Yes
	DR	1	Delonix regia	Royal Poinciana	16' OA	8'	4"	
	FS	1	Ficus aurea	Strangler Fig	25' OA	20'	15"	

GENERAL NOTES:

- 1- ALL PROPOSED PLANTING TO RECEIVE 100% IRRIGATION COVERAGE.
- 2- TREES SHALL NOT BE LOCATED WITHIN 5' FROM ANY PROPOSED UTILITIES.
- 3- NO LANDSCAPING SHALL BE PLANTED IN A MANNER THAT WOULD ADVERSELY AFFECT UTILITY EASEMENTS. LANDSCAPING SHALL BE IN COMPLIANCE WITH CHAPTER 154 OF THE CITY OF PORT ST. LUCIE CODE OF ORDINANCES, PSLUSD TECHNICAL SPECIFICATIONS AND POLICIES.
- 4- ALL LANDSCAPING WITHIN CITY UTILITY EASEMENTS SHALL COMPLY WITH PSLUSD TECHNICAL SPECIFICATIONS, POLICIES AND CODES.
- 5- ALL LANDSCAPING SHALL MEET THE LATEST PSLUSD LANDSCAPE POLICY AND SHALL NOT BE PLACED IN A MANNER THAT WOULD CREATE CONFLICTS WITH THE INTENDED OPERATION AND MAINTENANCE OF ANY EXISTING UTILITY.
- 6- TREES SHALL NOT BE PLANTED WITHIN TEN (10) FEET OF ANY PSLUSD UNDERGROUND INFRASTRUCTURE.
- 7- NO LANDSCAPING OTHER THAN SOD GRASSES SHALL BE LOCATED WITHIN 5' OF A PSLUSD APPURTENANCE SUCH AS A WATER METER ASSEMBLY, BACK-FLOW DEVICE, FIRE HYDRANT OR SEWER CLEANOUT, ETC.



PSLUSD # 5001-31B P17-004-A2



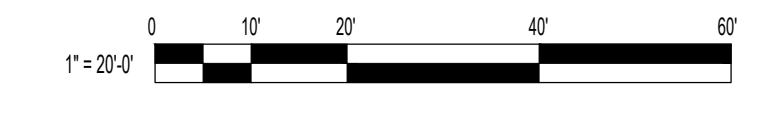
SHRUBS & GROUNDCOVERS SCHEDULE

	COCOPLUM chrysobalanus icaco. -- 25G, 5ft HT	77
	NATIVE AND ADAPTED Alpinia zerumbet / Shell Ginger Chrysobalanus icaco / Coco Plum Hymenocallis latifolia / Spider Lily Lantana involucrata / Buttonsage Monstera deliciosa / Split-leaf Philodendron Muhlenbergia capillaris / Pink Muhly Grass Nephrolepis biserrata / Macho Fern Nephrolepis exaltata / Boston Fern Philodendron burle-marxii / Burle Marx Philodendron Philodendron selloum / Selloum Philodendron Philodendron wilsonii / Philodendron Randia aculeata / White Indigo Berry Serenoa repens 'Cinerea' / Silver Saw Palmetto Serenoa repens 'Green' / Green Saw Palmetto Tripsacum dactyloides / Fakahatchee Grass	6,213 sf
	TROPICAL AND EXOTIC Arachis glabrata / Perennial Peanut Chrysobalanus icaco / Coco Plum Clusia rosea 'Nana' / Dwarf Pitch Apple Colocasia esculenta / Green Taro Heliconia psittacorum / Parrot Heliconia Heliconia rostrata / Lobster Claw Passiflora incarnata / Passion Flower Vine Philodendron wilsonii Philodendron xanadu / Xanadu Philodendron Rhapis excelsa / Lady Palm Serenoa repens / Saw Palmetto Tripsacum dactyloides / Fakahatchee Grass	4,187 sf
	SOD Stenotaphrum secundatum / St. Augustine Grass	274 sf

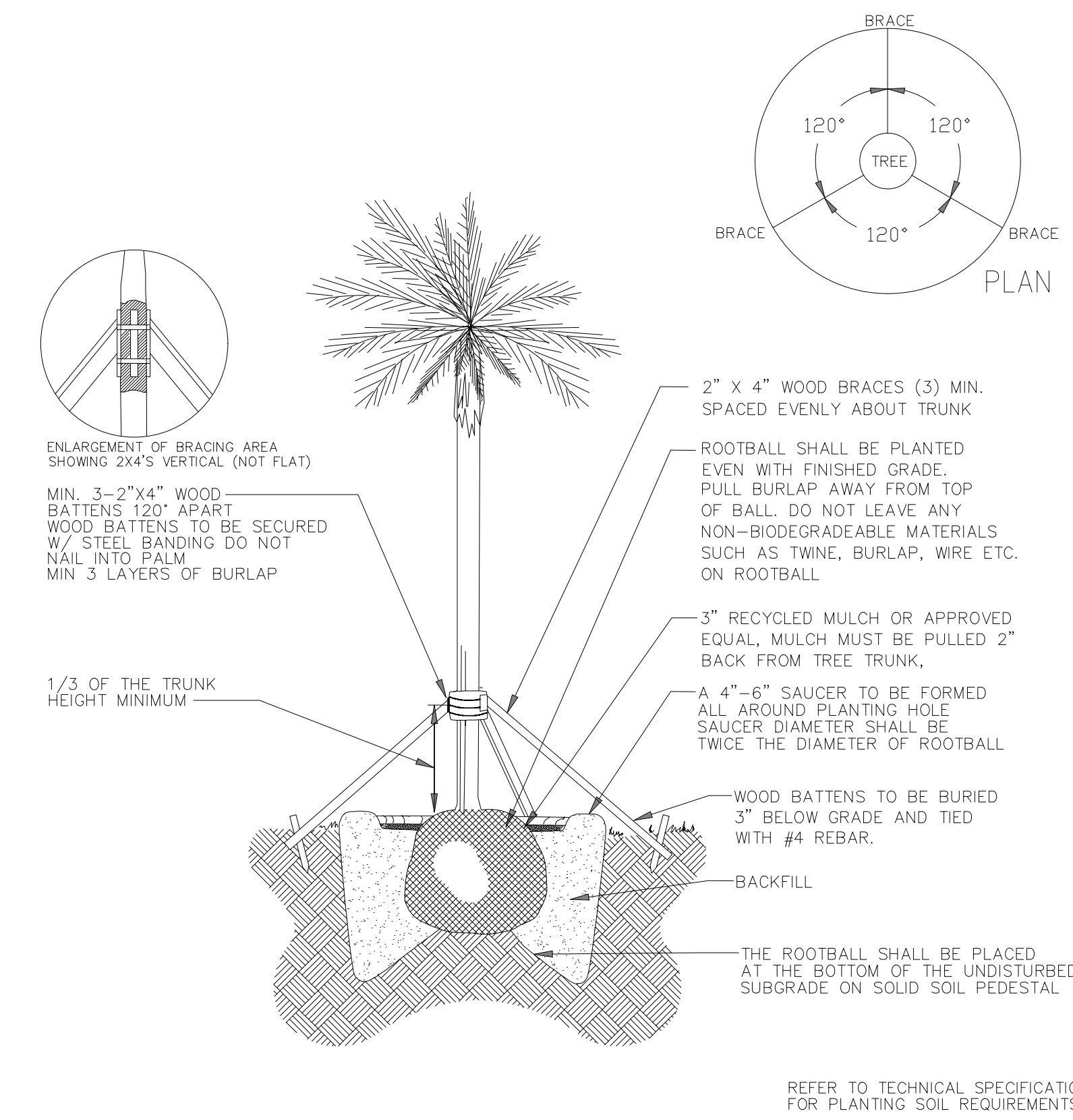
SHRUBS & GRCVS SCHEDULE - OUTSIDE OF PROPERTY

	TROPICAL AND EXOTIC Arachis glabrata / Perennial Peanut Chrysobalanus icaco / Coco Plum Clusia rosea 'Nana' / Dwarf Pitch Apple Colocasia esculenta / Green Taro Heliconia psittacorum / Parrot Heliconia Heliconia rostrata / Lobster Claw Passiflora incarnata / Passion Flower Vine Philodendron wilsonii Philodendron xanadu / Xanadu Philodendron Rhapis excelsa / Lady Palm Serenoa repens / Saw Palmetto Tripsacum dactyloides / Fakahatchee Grass	3,005 sf
--	--	----------

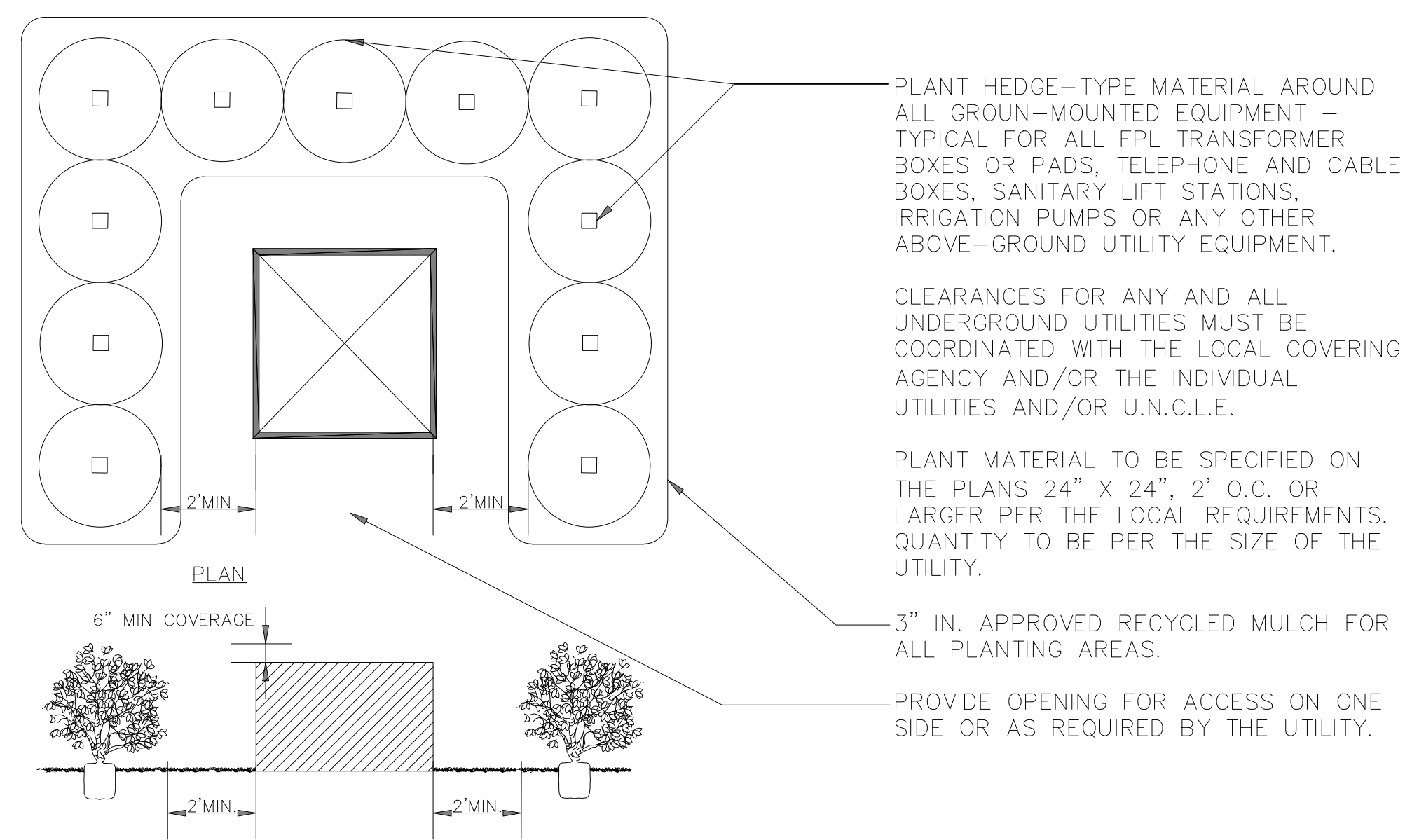
- GENERAL NOTES:**
- 1- ALL PROPOSED PLANTING TO RECEIVE 100% IRRIGATION COVERAGE.
 - 2- TREES SHALL NOT BE LOCATED WITHIN 5' FROM ANY PROPOSED UTILITIES.
 - 3- FOR PLANTING DRAINS REFER TO CIVIL DRAWINGS.
 - 4- NO LANDSCAPING SHALL BE PLANTED IN A MANNER THAT WOULD ADVERSELY AFFECT UTILITY EASEMENTS. LANDSCAPING SHALL BE IN COMPLIANCE WITH CHAPTER 154 OF THE CITY OF PORT ST. LUCIE CODE OF ORDINANCES, PSLUSD TECHNICAL SPECIFICATIONS AND POLICIES.
 - 5- ALL LANDSCAPING WITHIN CITY UTILITY EASEMENTS SHALL COMPLY WITH PSLUSD TECHNICAL SPECIFICATIONS, POLICIES AND CODES.
 - 6- ALL LANDSCAPING SHALL MEET THE LATEST PSLUSD LANDSCAPE POLICY AND SHALL NOT BE PLACED IN A MANNER THAT WOULD CREATE CONFLICTS WITH THE INTENDED OPERATION AND MAINTENANCE OF ANY EXISTING UTILITY.
 - 7- TREES SHALL NOT BE PLANTED WITHIN TEN (10) FEET OF ANY PSLUSD UNDERGROUND INFRASTRUCTURE.
 - 8- NO LANDSCAPING OTHER THAN SOD GRASSES SHALL BE LOCATED WITHIN 5' OF A PSLUSD APPURTENANCE SUCH AS A WATER METER ASSEMBLY, BACK-FLOW DEVICE, FIRE HYDRANT OR SEWER CLEANOUT, ETC.



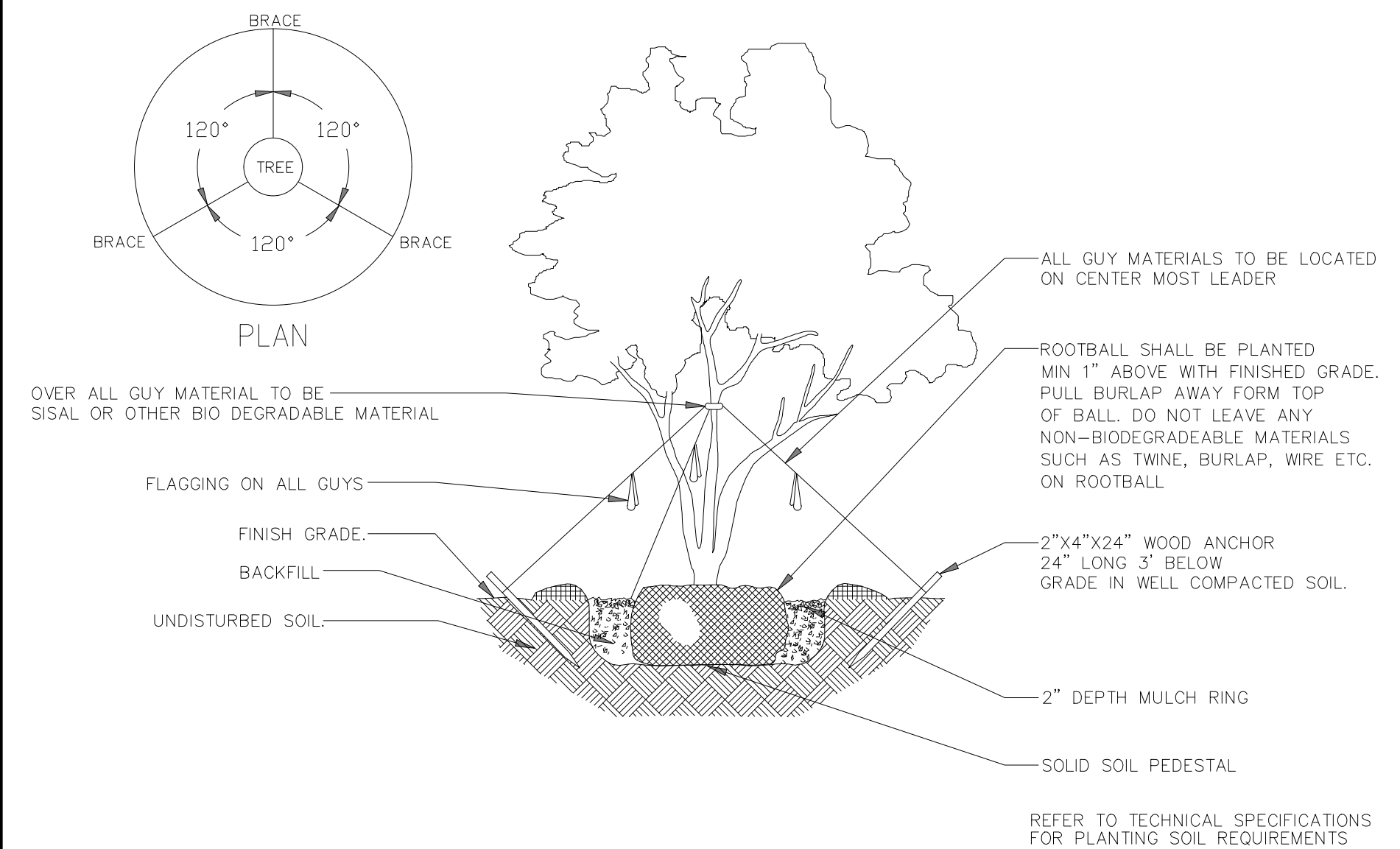
PSLUSD # 5001-31B P17-004-A2



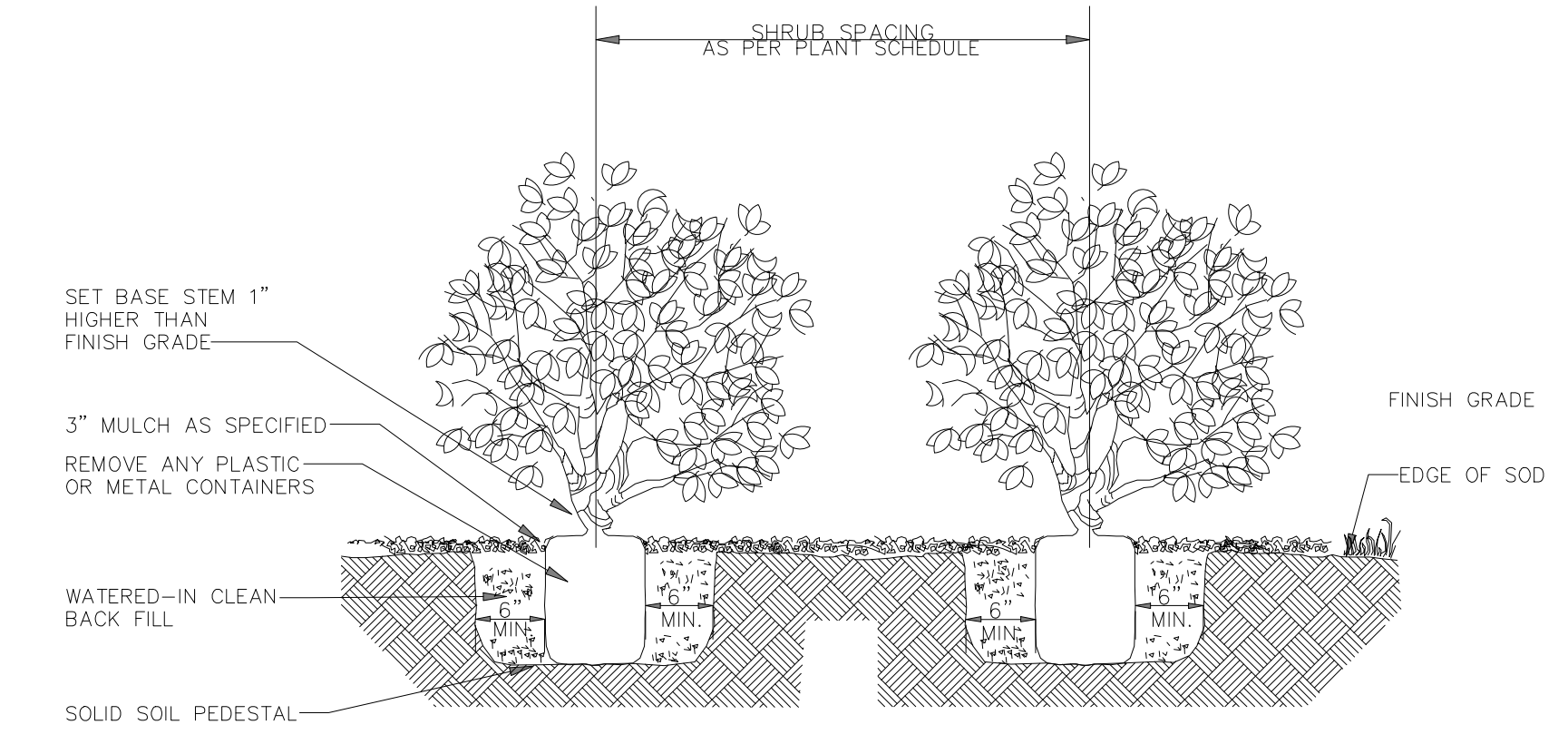
7 PALM PLANTING
SCALE: N.T.S.



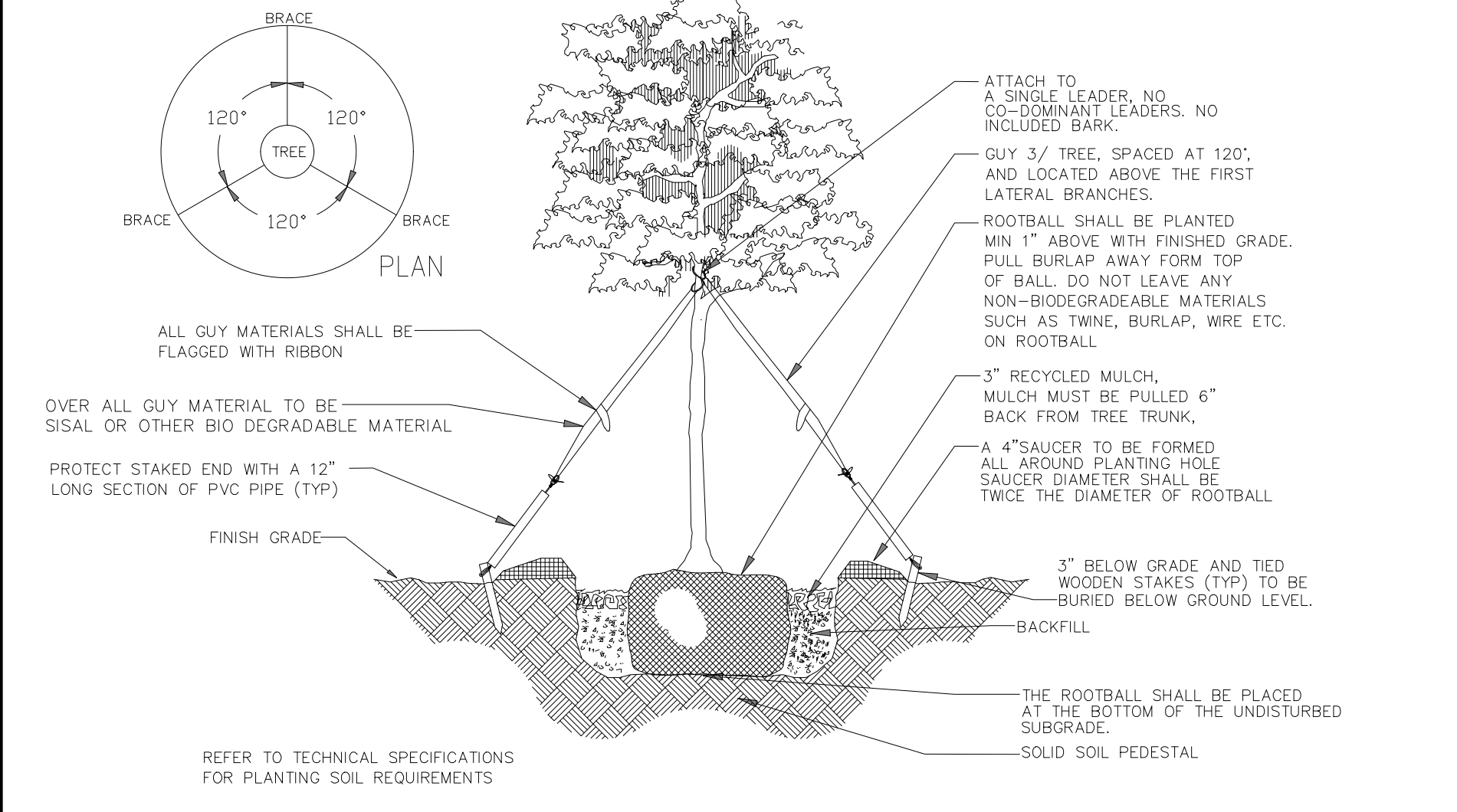
4 TYP. PLANTING SCREENING
SCALE: N.T.S.



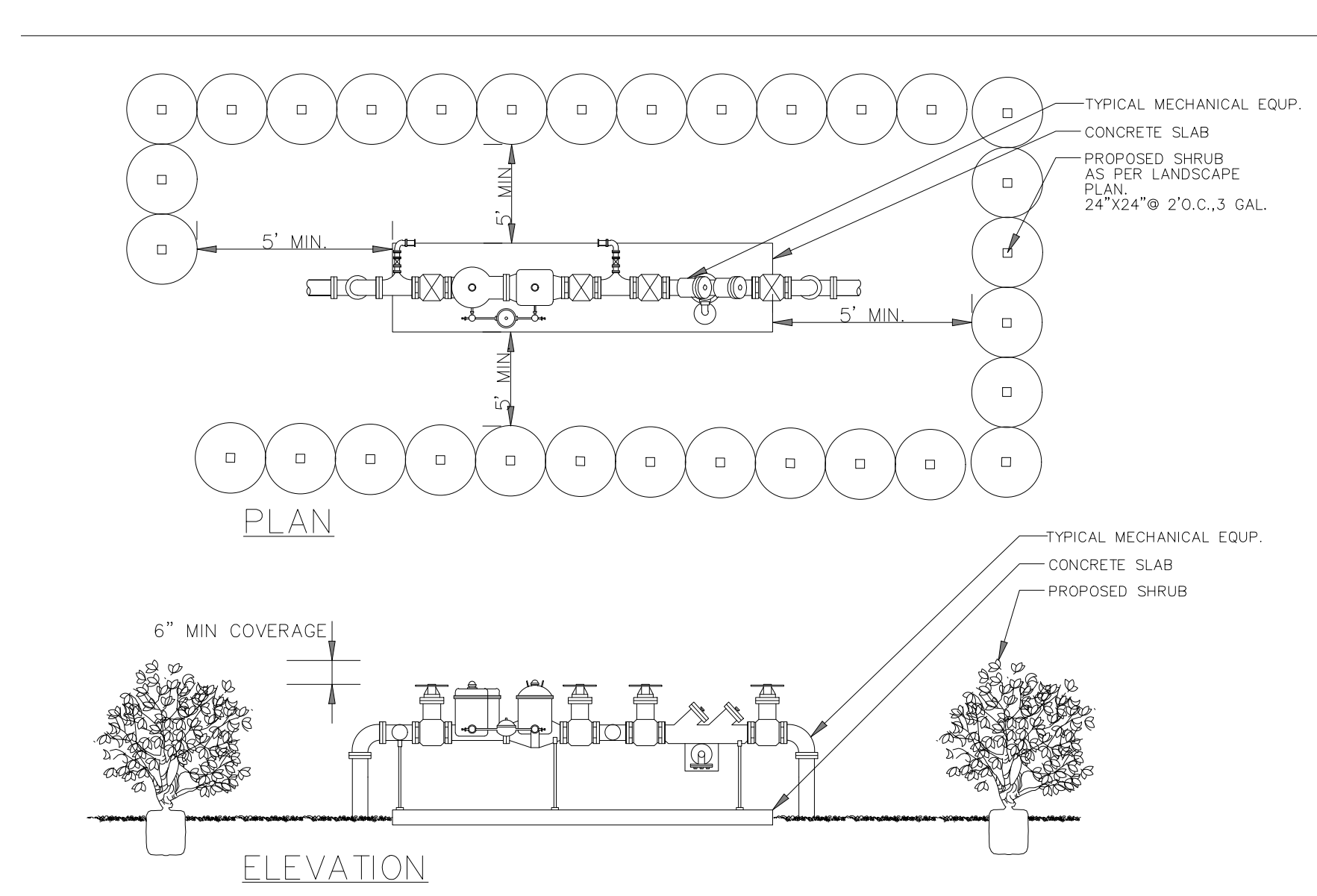
1 MULTI-TRUNK TREE PLANTING
SCALE: N.T.S.



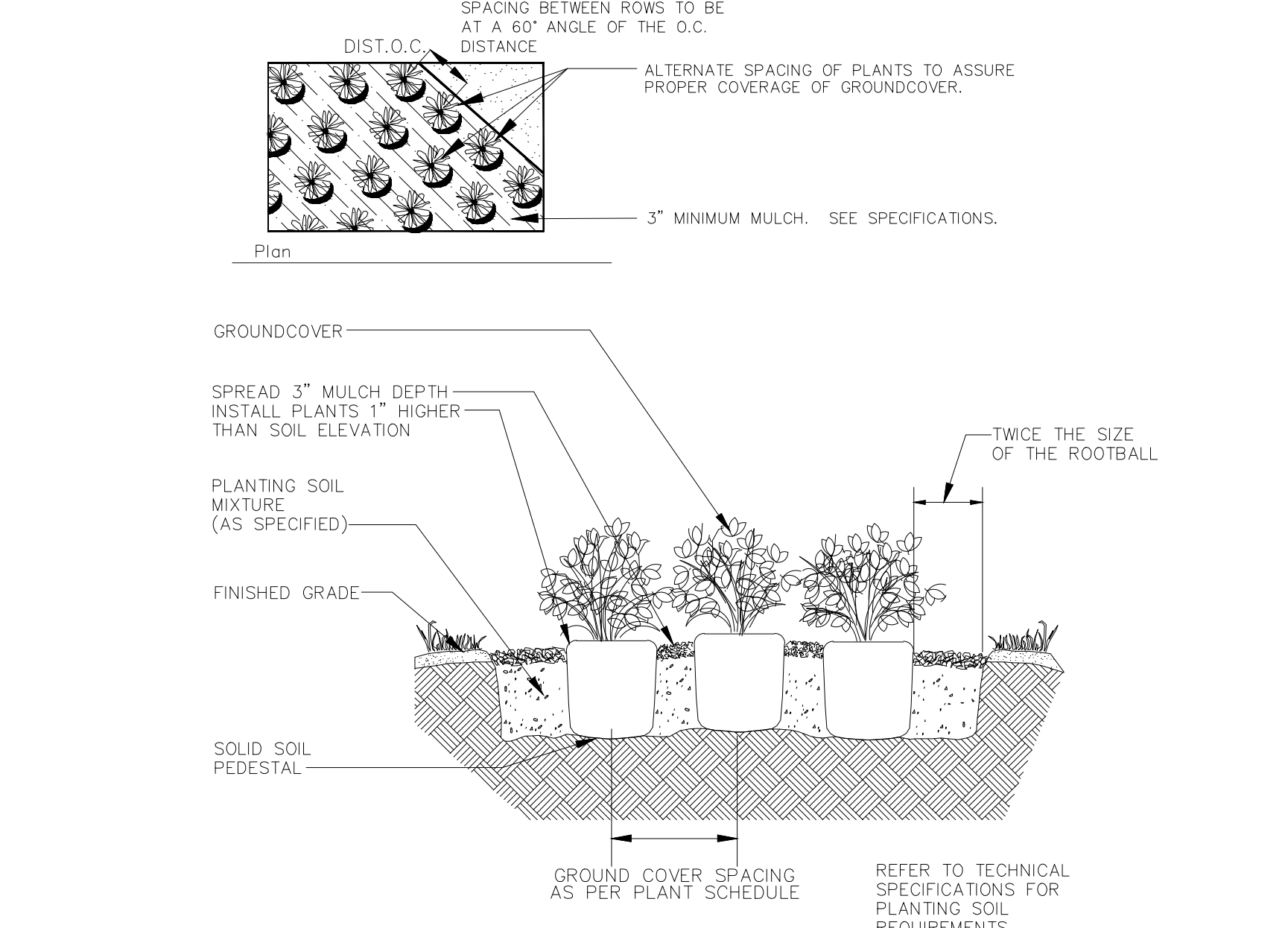
5 SHRUB PLANTING
SCALE: N.T.S.



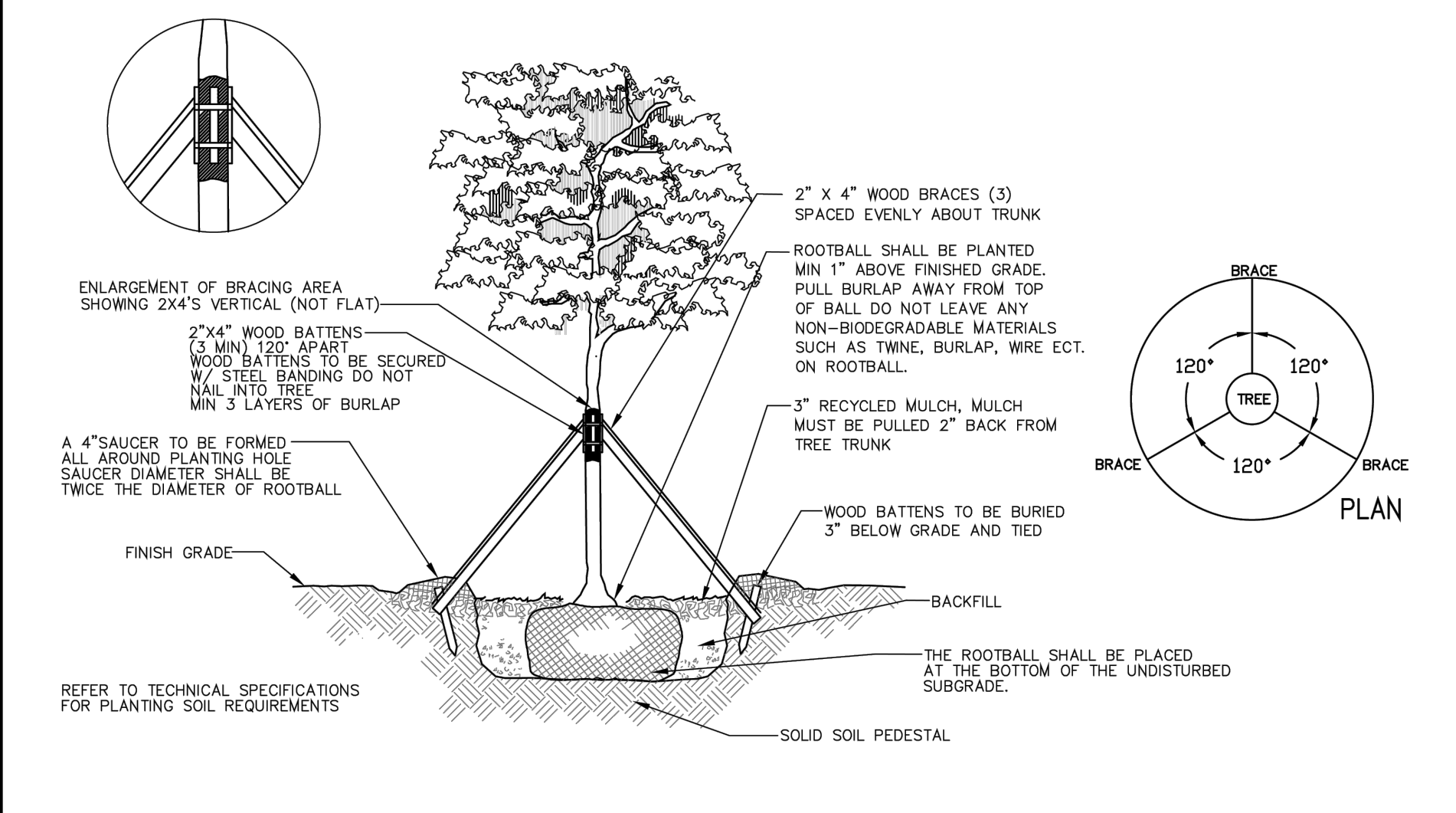
2 SMALL TREE DETAIL
SCALE: N.T.S.



8 TYP. PLANTING SCREEN FOR MECHANICAL EQUIP.
SCALE: N.T.S.



6 GROUND COVER PLANTING
SCALE: N.T.S.



3 LARGE TREE DETAIL
SCALE: N.T.S.

PSLUSD # 5001-31B P17-004-A2