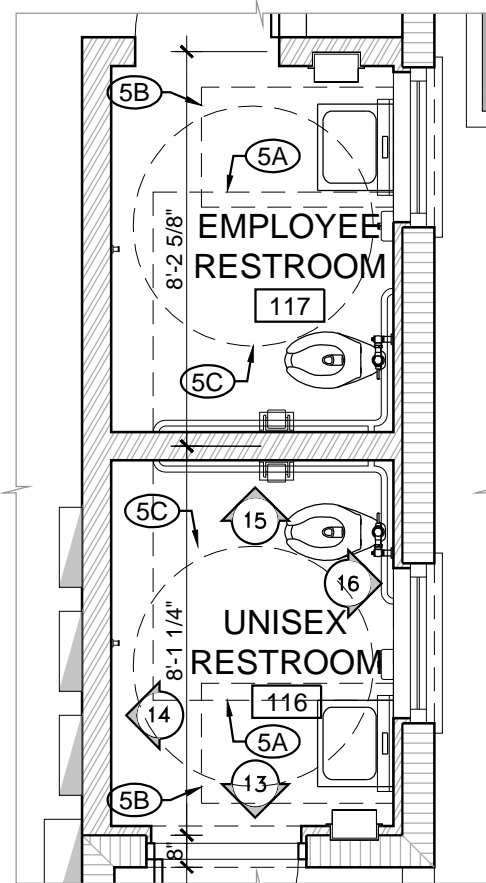
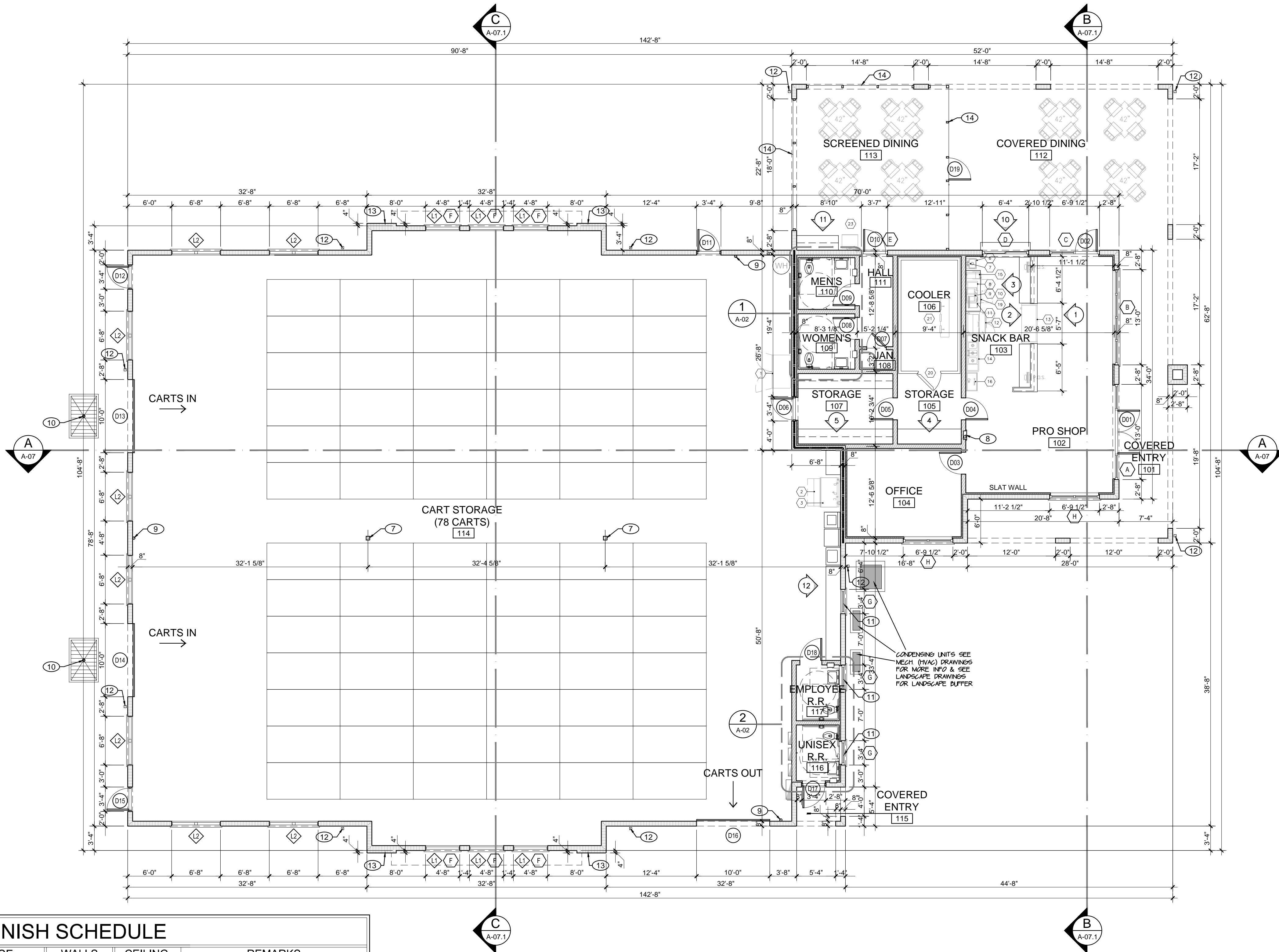


RESTROOMS  
FLOOR PLAN 1  
SCALE: 1/4" = 1'-0"



RESTROOMS  
FLOOR PLAN 2  
SCALE: 1/4" = 1'-0"



## FLOOR PLAN

SCALE: 1/8" = 1'-0"

### LEGEND

- 8" CONCRETE BLOCK CONSTRUCTION
- 2 HR. FIRE RATED CONSTRUCTION
- INTERIOR WALLS: 6" (OR 5/8") WHERE CALLED OUT METAL STUDS AT 16" O.C. MAX. WITH DATT INSULATION BETWEEN AND 5/8" GYPSUM WALLBOARD EACH SIDE.
- INTERIOR SIDE OF CONCRETE BLOCK WALLS AT AIR CONDITIONED AREA: 5/8" GYPSUM WALLBOARD OVER 1-5/8" METAL STUDS AT 16" O.C. WITH DATT INSULATION BETWEEN.
- INTERIOR ELEVATION
- WINDOW DESIGNATION
- LOUVER DESIGNATION
- DOOR DESIGNATION
- ROOM DESIGNATION

### GENERAL NOTES

- DO NOT SCALE DRAWINGS - VERIFY DIMENSIONS PRIOR TO LAYOUT OR CONSTRUCTION. VERIFY ALL EXISTING CONDITIONS (LAYOUT, DIMENSIONS) NOTIFY ARCHITECT OF ANY DISCREPANCIES.
- ALL INTERSECTING CONSTRUCTION SHOWN HEREON SHALL MEET AT 90 OR 45 DEGREE ANGLES (OR MULTIPLES THEREOF) EXCEPT WHERE OTHERWISE NOTED.
- SEE SITE PLAN FOR CONTINUATION OF WALKWAYS, SIDEWALKS, DECKS, ETC. COORDINATE LAYOUT, DIMENSIONS, ETC. WITH CIVIL AND LANDSCAPE DRAWINGS.
- COORDINATE THESE DRAWINGS WITH STRUCTURAL AND MECHANICAL DRAWINGS FOR REQUIRED EQUIPMENT CLEARANCES AND MAINTENANCE ACCESS.
- REQUIRED FLOOR CLEARANCES FOR ACCESSIBILITY BY THE PHYSICALLY HANDICAPPED (PER FBC) ARE:
  - A: 60" x 40" W.C. (CLEAR FLOOR AREA)
  - B: 30" x 40" SINKS AND URINALS
  - C: 60" DIAMETER WHEELCHAIR TURNAROUND
  - D: 40" x 40" "T" TURNAROUND
  - E: 36" x 60" SHOWER ACCESS
  - F: 18" ON FULL SIDE OF SWING DOOR
  - G: 12" ON PUSH SIDE OF DOOR
- INTERIOR DOORS TO BE CENTERED IN WALLS OR HAVE 6" JAMB ON ONE SIDE. TYP. UNLESS DIMENSIONED OTHERWISE. VERIFY WITH ARCHITECT.
- STRUCTURAL STEEL COLUMN - SEE STRUCTURAL DRAWINGS.
- PROVIDE AND INSTALL A 5 LBS. UL RATED 2A-100C FIRE EXTINGUISHER IN SEMI-RECESSED CABINET AT LOCATIONS AS SHOWN ON PLAN. USE FIRE RATED CABINETS AT FIRE RATED WALL LOCATIONS.
- PROVIDE AND INSTALL A 10 LBS. UL RATED 4A-800C FIRE EXTINGUISHER AT LOCATIONS AS SHOWN ON PLAN (SURFACE MOUNT ON WALL BRACKET).
- CART WASH DRAIN AND SAND INTERCEPTOR - REFER TO PLUMBING DRAWINGS.
- TRANSOM WINDOW ABOVE 6" JAMB RECESS WITH DECORATIVE FALSE LOUVER - SEE DETAIL.
- 4" SQUARE DOWNSPOUTS EXTENDING TO DOWNSPOUT BOOT TYP. SERIES AS MANUF. BY JAY R. SMITH. MFG. CO. OR APPROVED EQUAL AS TRANSITION TO UNDERGROUND STORM DRAIN SYSTEM - SEE DETAIL 8/A-04 AND COORDINATE WITH CIVIL DRAWINGS.
- 12W CONCRETE BLOCK CONSTRUCTION TO ACHIEVE 4" PROTRUSION FROM TYPICAL CONCRETE BLOCK.
- ALUMINUM FRAME SCREEN SYSTEM WITH SOLAR SCREEN 30.

### SQUARE FOOTAGES

A/C (per FBC) - 1,578  
GROSS (per FBC) - 10,898

SQUARE FOOTAGES ARE GIVEN ACCORDING TO THE FOLLOWING PARAMETERS: A/C IS MEASURED FROM INSIDE FACE OF EXTERIOR BLOCK WALL, AND GROSS IS MEASURED FROM OUTSIDE FACE OF EXTERIOR BLOCK WALL THROUGHOUT INCLUDING OUTSIDE FACE OF THE BEAM AT COVERED TERRACE AND COVERED ENTRY.

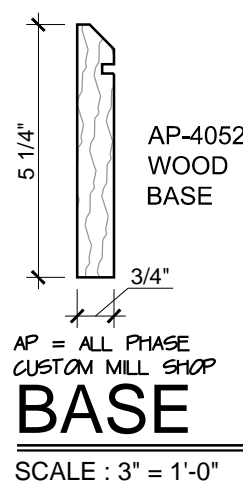
## ROOM FINISH SCHEDULE

ROOM NUMBER	ROOM NAME	FLOORS	BASE	WALLS	CEILING	REMARKS
		CONCRETE PAVERS OVER SAND BED CARPET TILE - SEE I.D. DRAWINGS FOR TYPE EXPOSED CONCRETE WITH HARDENER VINYL	STUCCO BASE TRIM WOOD BASE AP-4052 TILE COVERED BASE VINYL BASE NONE	3/4" STUCCO WITH SMOOTH FINISH 5/8" GYP. BOARD 5/8" MOISTURE RESISTANT GYP. BOARD 1/4" STUCCO SKIMCOAT	STUCCO (SMOOTH FINISH) ON METAL LATH 2x4/2x4 ACoustical CEILING TILE 5/8" GYP. BOARD 5/8" MOISTURE RESISTANT GYP. BOARD EXPOSED STRUCTURE	
	MATERIALS DESIGNATION ->	1 2 3 4 5 6 7 8 9	10 11 12 13 14 15	20 21 22 23	25 22 23 24 25	
101	COVERED ENTRY	1	10	20	25	
102	PRO SHOP	2	11	21	22 23	
103	SNACK BAR	3	12	21	22 23	
104	OFFICE	2	11	21	22	
105	STORAGE	3	13	21	23	
106	COOLER	3	13	21	23	
107	STORAGE	3	13	21	23	
108	JANITOR'S CLOSET	3	12	22	24	
109	WOMEN'S	3	12	22	24	
110	MEN'S	3	12	22	24	
111	HALL	3	12	21	23	
112	COVERED DINING	1	10	20	25	
113	SCREENED DINING	1	10	20	25	
114	CART STORAGE	4	14	23	25	
115	COVERED ENTRY	1	10	20	25	
116	UNISEX RESTROOM	3	12	22	24	
117	EMPLOYEE RESTROOM	5	13	22	24	

### ROOM FINISH SCHEDULE NOTES

- COORDINATE FINISHES AND EXACT LOCATIONS WITH ARCHITECT AND INTERIOR DESIGNER PRIOR TO APPLICATION.
- COORDINATE SCHEDULE WITH INTERIOR ELEVATIONS AS SHOWN ON SEET A-09 AND REFLECTED CEILING PLAN SHEET A-09.
- PER FBC TABLE 809.5 AND IFPG 101.12.3.3.3 WALL AND CEILING FINISHES FOR THIS STRUCTURE (GROUP A-1/ SPRINKLERED) SHALL BE AS FOLLOWS:

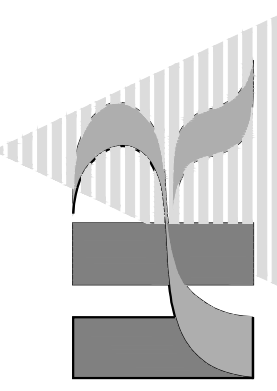
GROUP	VERT. EXITS & EXIT PASSAGEWAYS	EXIT ACCESS CORRIDORS AND OTHER EXITWAYS	ROOMS AND ENCLOSED SPACES
M	A	B	C
- PER FBC SECTION 804.4 GROUP "A" INTERIOR FLOOR FINISHES IN EXIT ENCLOSURES, EXIT PASSAGEWAYS AND CORRIDORS SHALL WITHSTAND A MINIMUM CRITICAL RADIANT FLUX CLASS II, AND OTHER SPACES SHALL COMPLY WITH DOG FF-1 "FILL TEST" (CSPC IACOR, PART 1600). BECAUSE THIS STRUCTURE IS SPRINKLERED THROUGHOUT, CLASS II MATERIALS ARE PERMITTED IN ANY AREA WHERE CLASS I MATERIALS ARE REQUIRED, AND MATERIALS COMPLYING WITH THE DOG FF-1 "FILL TEST" ARE PERMITTED IN ANY AREA WHERE CLASS II MATERIALS ARE REQUIRED.
- ALL INTERIOR TRIM SHALL HAVE A MINIMUM CLASS "C" FLAME SPREAD INDEX AND SMOKE DEVELOPED INDEX IN ACCORDANCE WITH FBC 806.7.
- PROVIDE MOISTURE RESISTANT BOARD IN ALL UNCONDITIONED SPACES, TOILET ROOMS AND GROOMING AREAS AND 1/2" DUROCK BEHIND ALL WALL TILE LOCATIONS.



## EQUIPMENT SCHEDULE

Item No.	Qty	Equipment Category	Manufacturer	Model Number	Equipment Remarks
1	1	REFRIGERATOR, REACH-IN	AVANTCO	178SS2RGHC	-
2	1	BIN, ICE	HOSHIZAKI AMERICA	B-1150SS	-
3	1	ICE MAKER W/O BIN	HOSHIZAKI AMERICA	KM-1301SAJ3	-
-	-	-	-	-	-
4	-	SPARE NUMBER	-	-	-
5	-	SPARE NUMBER	-	-	-
6	1	HAND SINK FAUCET	REGENCY	600FW44GLL	-
7	1	HAND SINK, WALL MOUNT	REGENCY	600HS17SP	-
8	1	HOT DOG GRILL	NEMCO FOOD EQUIPMENT	8027	-
9	1	OVEN, MICROWAVE	WARING	WM090	-
10	1	MICROWAVE WALL SHELF	TSF	CUSTOM	-
11	1	PANINI GRILLE, HALF SMOOTH/HALF RIDGED PLATE	WARING COMMERCIAL	WDG300	-
12	1	REFRIGERATOR, SANDWICH/SALAD PREP	BEVERAGE-AIR	SPE36HC-08	-
13	1	OPEN DISPLAY MERCHANDISER	TURBO AIRE	TOM-60MSEW(B)-N	-
14	1	SINK, CONVENIENCE STORE	ADVANCE TABCO	K7-CS-21	-
15	1	COFFEE/TEA MAKER	BUNN-O-MATIC	35700.0000	-
16	1	UNDERBAR ICE CHEST	PERLICK	TS30IC-EC	-
17	-	SPARE NUMBER	-	-	-
19	1	BACK BAR EQUIPMENT	BEVERAGE-AIR	BB4BHC-1-G-B	-
20	1	WALK IN COOLER	CUSTOM	SEE SHOP DWG	-
21	1	EVAPORATOR, WALK IN COOLER	CUSTOM	SEE SHOP DWG	-
22	1	COMPRESSOR, WALK IN COOLER	CUSTOM	SEE SHOP DWG	-
23	1	ICE MAKER/DISPENSER	HOSHIZAKI AMERICA	DCM-500BAH-OS/SD-500	-
-	-	-	-	-	-

HUMPHREY • ROSAL  
ARCHITECTS  
3000 FT. ST. NORTH  
SUITE 100  
NAPLES, FLORIDA 34103  
TEL: (239) 263-4451  
FAX: (239) 263-4451  
humphrey@humphreysosal.com



PROPOSED STRUCTURE:  
DRAWN: 04/15/2022  
DATE:  
REVISIONS:

CART BARN / PRO SHOP  
AT ASTOR CREEK  
PORT SAINT LUCIE, FLORIDA

FLOOR PLAN  
ROOM FINISH SCHEDULE

SHEET No.  
A-02

