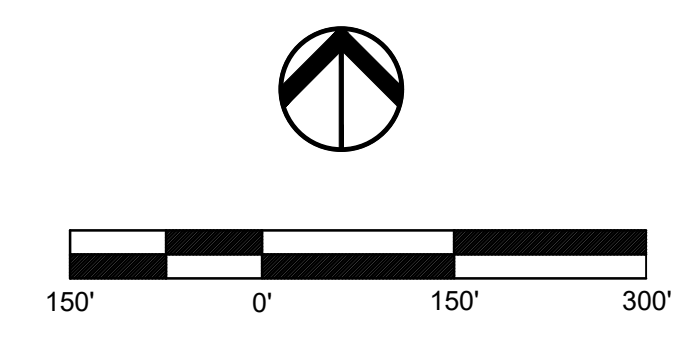


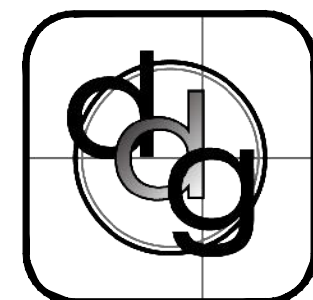
PHASE 2 LANDSCAPE KEY SHEET

SCALE 1" = 150'

CITY OF PORT ST. LUCIE PROJECT#
 COPSL Project No.: P22-180
 PSLUSD File No.: 5336C



Date:	



Landscape Key Sheet
 Landscape Construction Plans
 Belterra Tradition Phase II
 Port St. Lucie, Florida

REV.	DATE	DESCRIPTION	BY
3	02.07.23	Revision Per City Comments.	nfb
2	10.25.22	Revision Per City Comments.	nfb
1	08.01.22	Revision Per City Comments.	nfb

daly design group inc.
 Urban Planning, Landscape Architecture, Project Management, Development Consulting
 913 N Pennsylvania Ave, Winter Park, FL 32789 (407) 740-7373 www.dalydesign.com

PROJECT NO.
 1906-3
 SCALE
 1" = 150'
 DATE
 May 2022
 SHEET
 K-100

PLANT SCHEDULE

ENTRANCE LANDSCAPE

TREES	BOTANICAL NAME	COMMON NAME	QTY	REMARKS
BS	Bursera simaruba	Gumbo Limbo	4	MIN. 65 GAL., 14" HT., 2.5" CAL.
CS	Conocarpus erectus 'Sericeus'	Silver Buttonwood	8	MIN. 30 GAL., 8" HT., FULL HEAD, MATCHED.
IV	Ilex vomitoria	Yaupon Holly	6	MIN. 30 GAL., 8" HT., MULTI TRUNK.
JM	Jacaranda mimosifolia	Jacaranda	3	MIN., 100 GAL.
LJ	Ligustrum japonicum	Japanese Privet	2	MIN. 65 GAL., 8" HT. X 8" SPD., MATCHED, FULL HEAD.
PS	Phoenix sylvestris	Sylvester Date Palm	9	MIN. BB., 8" CT., MATCHED.
QV	Quercus virginiana	Southern Live Oak	2	MIN., 65 GAL., 14" ht., 3" CAL., MATCHED
TG	Tibouchina granulosa	Purple Glory Tree	4	MIN. 45 GAL., 8" HT., FULL HEAD
WB	Wodyetia bifurcata	Foxtail Palm	11	MIN. BB., 8" CT., MATCHED.
SHRUBS	BOTANICAL NAME	COMMON NAME	QTY	REMARKS
CES	Conocarpus erectus 'Sericeus'	Silver Buttonwood	58	MIN. 3 GAL., 24" HT. X 24" SPR., 24" OC.
COE	Crinum augustum 'Queen Emma'	'Queen Emma' Crinum	6	MIN. 7 GAL., FULL.
CRR	Chrysobalanus icaco 'Red Tip'	Red Tip Cocoplum	14	MIN. 7 GAL., 36" HT. X 30" SPD., 36" O.C.
IN	Ilex vomitoria 'Nana'	Dwarf Yaupon	56	MIN., 3 GAL., 24" HT X 24" SPD., 24" OC.
IP	Illicium floridanum	Florida Anise	20	MIN. 3 GAL., 24" HT. X 24" SPR., 24" OC.
PM	Podocarpus macrophyllus	Podocarpus	63	MIN. 7 GAL., 36" HT X 30" SPR., 30" OC.
SR	Strelitzia reginae	Bird Of Paradise	9	MIN., 7 GAL., FULL.
VO	Viburnum odoratissimum	Sweet Viburnum	92	MIN. 7 GAL., 36" HT. X 30" SPD., 36" OC.
SHRUB AREAS	BOTANICAL NAME	COMMON NAME	QTY	REMARKS
DA	Duranta erecta 'Aurea'	Dwarf Yellow Duranta	570	MIN. 1 GAL., 18" HT x 18" SPR., 24" O.C.
EVO	Evolvulus glomeratus 'Blue Daze'	Brazilian Dwarf Morning Glory	248	MIN. 1 GAL., 12" HT. x 12" SPR., 18" OC.
HC	Hamelia patens 'Compacta'	Dwarf Firebush	347	MIN. 3 GAL., 24" HT. X 24" SPR., 24" OC.
GROUND COVERS	BOTANICAL NAME	COMMON NAME	QTY	REMARKS
ARG	Arachis glabrata	Perennial Peanut	264	MIN. 1 GAL., 18" OC.
JC	Juniperus conferta 'Compacta'	Dwarf Shore Juniper	122	MIN. 3 GAL., 18" HT. X 24" SPR., 24" OC.
LIR	Liriope muscari 'Big Blue'	Big Blue Lilyturf	198	MIN. 1 GAL., FULL POT, 12" OC.
MCA	Muhlenbergia capillaris	Pink Muhly Grass	309	MIN., 3 GAL., 24" ht., FULL POT, 24" o.c.
TAM	Trachelospermum asiaticum	Asian Jasmine	2,165	MIN. 1 GAL., FULL POT, 12" O.C.

30' LANDSCAPE BUFFER - NORTH

TREES	BOTANICAL NAME	COMMON NAME	QTY	REMARKS
BA	Bulnesia arborea	Verawood	18	MIN. 30 GAL., 8" HT., 3" CAL., FULL HEAD
BO	Bucida buceras 'Shady Lady'	Shady Lady Black Olive	16	MIN. 65 GAL., 14" HT., 3" CAL.
BS	Bursera simaruba	Gumbo Limbo	4	MIN. 65 GAL., 14" HT., 3" CAL.
CS	Conocarpus erectus 'Sericeus'	Silver Buttonwood	12	MIN. 30 GAL., 8" HT., FULL HEAD, MATCHED.
LAG	Lagerstroemia indica	Crape Myrtle	8	MIN. 8" HT., STANDARD, MATCHED.
LJ	Ligustrum japonicum	Japanese Privet	6	MIN. 65 GAL., 8" HT. X 8" SPD., MATCHED, FULL HEAD.
QV	Quercus virginiana	Southern Live Oak	8	MIN., 65 GAL., 14" ht., 3" CAL., MATCHED
SHRUBS	BOTANICAL NAME	COMMON NAME	QTY	REMARKS
CG	Clusia guttifer	Small Leaf Clusia	146	MIN. 7 GAL., 36" HT. X 30" SPD., 42" O.C.
CR	Chrysobalanus icaco 'Red Tip'	Red Tip Cocoplum	244	MIN. 3 GAL., 24" HT. X 24" SPR., 30" OC.
PM	Podocarpus macrophyllus	Podocarpus	168	MIN. 7 GAL., 36" HT X 30" SPR., 30" OC.
SHRUB AREAS	BOTANICAL NAME	COMMON NAME	QTY	REMARKS
HC	Hamelia patens 'Compacta'	Dwarf Firebush	279	MIN. 3 GAL., 24" HT. X 24" SPR., 24" OC.
MCP	Muhlenbergia capillaris	Pink Muhly	239	MIN. 3 GAL., 24" HT. X 24" SPR., 36" O.C.
PI	Plumbago auriculata 'Imperial Blue'	Plumbago	790	MIN. 3 GAL., 24" HT. X 24" SPR., 24" O.C.
RIA	Rhaphiolepis indica	Indian Hawthorn	128	MIN. 3 GAL., 18" HT. X 18" SPR., 24" O.C.
TF	Tripsacum floridanum	Florida Gamagrass	120	MIN. 3 GAL., 24" HT. X 24" SPR., 36" OC.
GROUND COVERS	BOTANICAL NAME	COMMON NAME	QTY	REMARKS
ARG	Arachis glabrata	Perennial Peanut	2,170	MIN. 1 GAL., 18" OC.

10' LANDSCAPE BUFFER - SOUTH

TREES	BOTANICAL NAME	COMMON NAME	QTY	REMARKS
CF	Citharexylum fruticosum	Fiddlewood	13	MIN. 8" HT., FULL HEAD
PE	Pinus elliotti	Slash Pine	28	MIN. BB. 12'-16" HT., 2.5" CAL.
SS	Sabal palmetto	Cabbage Palmetto	3	MIN. BB., 6'-16" CT., SLICK, REGEN. SEE PLANS FOR OVERALL HEIGHT.
SHRUBS	BOTANICAL NAME	COMMON NAME	QTY	REMARKS
HC1	Hamelia patens 'Compacta'	Dwarf Firebush	264	MIN. 3 GAL., 24" HT. X 24" SPD., 24" O.C.
VB	Viburnum obovatum	Walter's Viburnum	207	MIN. 3 GAL., 24" HT. X 24" SPD., 30" O.C.

10' LANDSCAPE BUFFER - WEST

TREES	BOTANICAL NAME	COMMON NAME	QTY	REMARKS
CF	Citharexylum fruticosum	Fiddlewood	24	MIN. 8" HT., FULL HEAD
PE	Pinus elliotti	Slash Pine	47	MIN., BB. 12'-16" HT., 2.5" CAL.
SS	Sabal palmetto	Cabbage Palmetto	16	MIN. BB., 6'-16" CT., SLICK, REGEN. SEE PLANS FOR OVERALL HEIGHT.
SHRUBS	BOTANICAL NAME	COMMON NAME	QTY	REMARKS
HC1	Hamelia patens 'Compacta'	Dwarf Firebush	410	MIN. 3 GAL., 24" HT. X 24" SPD., 24" O.C.
VO	Viburnum odoratissimum	Sweet Viburnum	398	MIN. 7 GAL., 36" HT. X 30" SPD., 36" OC.
SHRUB AREAS	BOTANICAL NAME	COMMON NAME	QTY	REMARKS
TG	Tripsacum dactyloides	Fakahatchee Grass	193	MIN. 3 GAL., 24" HT. X 24" SPR., 36" OC.

LANDSCAPE TABLES

ENTRANCE LANDSCAPE

LANDSCAPE TABLE: ENTRANCE LANDSCAPE	REQUIRED	PROVIDED
CODE: (PER CHAPTER 154 PS LANDSCAPE CODE)		
TREES		36
TYPE "A" TREES (1:1 RATIO)		15
TYPE "B" TREES (2:1 RATIO)		11
TOTAL CANOPY TREES REQUIRED 1/15 LF(380/15=25)	25	26
DROUGHT TOLERANT TREES MIN. 50% OF REQ.	13	27
NATIVE TREES 50% OF REQ.	13	18
FLOWERING TREES 20% REQ.	5	9
PALM TREES MAX. 25% OF REQ. TREES	6 MAX	6
MIX OF TREES	2	7
SHRUBS (1/2 L.F.) (380/2 = 190)	190	1,488
NATIVE SHRUBS MIN. 25% REQ.	48	500
DORUGHT TOLERANT SHRUBS MIN. 50% REQ.	190	1,488
GROUND COVER	AS NEEDED	3,025
GROUND COVER FLOWERING MIN. 10%	276	821
DROUGHT TOLERANT GC MIN. 50% REQ.	1,382	3,025
SOD (TO BE LESS THAN 50% LANDSCAPE AREA)	9332 SF (50%)	8527 SF
SOD A (HIGH WATER) ST. AUGUSTINE		6559 SF
SOD B (LOW WATER) BAHIA		1968 SF
IRRIGATION ZONES	LOW/MED/HIGH	LOW/MEDIUM/HIGH
NON-POTABLE WATER SOURCE	NA	NA
*REQUIRED CANOPY TREE EQUIVALENT=6 (6 TYPE "A" / 20 PALMS)		
** MEDIAN TREES, SHRUBS AND GROUND COVERS ARE COUNTED IN PROVIDED LANDSCAPE		

30' LANDSCAPE BUFFER - NORTH

LANDSCAPE TABLE: 30' LANDSCAPE TABLE	REQUIRED	PROVIDED
CODE: (PER CHAPTER 154 PS LANDSCAPE CODE)		
LANDSCAPE BUFFER	20' BUFFER/23,337 SF	30' BUFFER/39,480 SF
TREES		70
TYPE "A" TREES (1:1 RATIO)		28
TYPE "B" TREES (2:1 RATIO)		21
TOTAL CANOPY TREES REQUIRED 1/30 LF(1316/30=44)	44	49
DROUGHT TOLERANT TREES MIN. 50% OF REQ.	22	20
NATIVE TREES 50% OF REQ.	22	24
FLOWERING TREES 20% REQ.	9	30
PALM TREES MAX. 25% OF REQ. TREES	11 MAX	0
MIX OF TREES	5	7
SHRUBS (1/2 L.F.) (1316/2 = 658)	658	1,893
NATIVE SHRUBS MIN. 25% REQ.	160	1,156
DORUGHT TOLERANT SHRUBS MIN. 50% REQ.	329	1,724
GROUND COVER	AS NEEDED	2,170
GROUND COVER FLOWERING MIN. 10%	132	2,170
DROUGHT TOLERANT GC MIN. 50% REQ.	1,085 (50%)	2,170 (100%)
SOD (TO BE LESS THAN 50% LANDSCAPE AREA)	19787 SF MAX.	18008 SF
SOD A (HIGH WATER) ST. AUGUSTINE		293 SF
SOD B (LOW WATER) BAHIA		17715 SF
IRRIGATION ZONES	LOW/MED/HIGH	LOW/MED/HIGH
NON-POTABLE WATER SOURCE	NA	NA
*REQUIRED CONOPY TREE EQUIVALENT = (45 TYPE "A" / 15 PALMS)		
** CLUSIA AND VIBURNUM ARE SIZED BIGGER AT PLANTING		

10' LANDSCAPE BUFFER SOUTH

LANDSCAPE TABLE: 10' LANDSCAPE TABLE	REQUIRED	PROVIDED
CODE: (PER CHAPTER 154 PS LANDSCAPE CODE)		
LANDSCAPE BUFFER	10' BUFFER/12489 SF.	10' BUFFER/10471 SF.
TREES		41
TYPE "A" TREES (1:1 RATIO)		28
TYPE "B" TREES (2:1 RATIO)		6.5
TOTAL CANOPY TREES REQUIRED 1/30 LF(1047/30=42)	35	41
DROUGHT TOLERANT TREES MIN. 50% OF REQ.	18	41
NATIVE TREES 50% OF REQ.	18	41
FLOWERING TREES 20% REQ.	7	13
PALM TREES MAX. 25% OF REQ. TREES	NA	0
MIX OF TREES	2	2
SHRUBS (1/2 L.F.) (1047/2 = 524)	524	524
NATIVE SHRUBS MIN. 25% REQ.	131	524
DORUGHT TOLERANT SHRUBS MIN. 50% REQ.	262	524
GROUND COVER	AS NEEDED	NA
GROUND COVER FLOWERING MIN. 10%	NA	NA
DROUGHT TOLERANT GC MIN. 50% REQ.	NA	NA
SOD (TO BE LESS THAN 50% LANDSCAPE AREA)	6244 SF	2809 SF
SOD A (HIGH WATER) ST. AUGUSTINE		
SOD B (LOW WATER) BAHIA		2809 SF
IRRIGATION ZONES	LOW/MED/HIGH	LOW/MED/HIGH
NON-POTABLE WATER SOURCE	NA	NA
*REQUIRED CONOPY TREE EQUIVALENT= (34 TYPE "A"/16 TYPE "B")		

10' LANDSCAPE BUFFER WEST

LANDSCAPE TABLE: 10' WEST LANDSCAPE TABLE	REQUIRED	PROVIDED
CODE: (PER CHAPTER 154 PS LANDSCAPE CODE)		
LANDSCAPE BUFFER	10' BUFFER/23100 SF.	10' BUFFER/19988 SF.
TREES		71
TYPE "A" TREES (1:1 RATIO)		47
TYPE "B" TREES (2:1 RATIO)		12
TOTAL CANOPY TREES REQUIRED 1/30 LF(1998/30=42)	67	71
DROUGHT TOLERANT TREES MIN. 50% OF REQ.	34	35
NATIVE TREES 50% OF REQ.	34	35
FLOWERING TREES 20% REQ.	13	71
PALM TREES MAX. 25% OF REQ. TREES	17 MAX.	16
MIX OF TREES	2	2
SHRUBS (1/2 L.F.) (1998/2 = 999)	999	1,001
NATIVE SHRUBS MIN. 25% REQ.	250	1,001
DORUGHT TOLERANT SHRUBS MIN. 50% REQ.	500	1,001
GROUND COVER	AS NEEDED	NA
GROUND COVER FLOWERING MIN. 10%	NA	NA
DROUGHT TOLERANT GC MIN. 50% REQ.	NA	NA
SOD (TO BE LESS THAN 50% LANDSCAPE AREA)	11,550 SF	4,080 SF
SOD A (HIGH WATER) ST. AUGUSTINE		
SOD B (LOW WATER) BAHIA		4,080 SF
IRRIGATION ZONES	LOW/MED/HIGH	LOW/MED/HIGH
NON-POTABLE WATER SOURCE	NA	NA
*REQUIRED CONOPY TREE EQUIVALENT= (34 TYPE "A"/16 TYPE "B")		

daly design group inc.
 Urban Planning, Landscape Architecture, Project Management, Development Consulting
 913 N Pennsylvania Ave, Winter Park, FL 32789 (407) 740-7373 www.dalydesign.com

REV.	DATE	DESCRIPTION	BY
3	02/07/23	Revision Per City Comments.	nrb
2	10/25/22	Revision Per City Comments.	nrb
1	08/01/22	Revision Per City Comments.	nrb

Landscape Schedule
 Landscape Construction Plans
 Belterra Tradition Phase II
 Port St. Lucie, FL

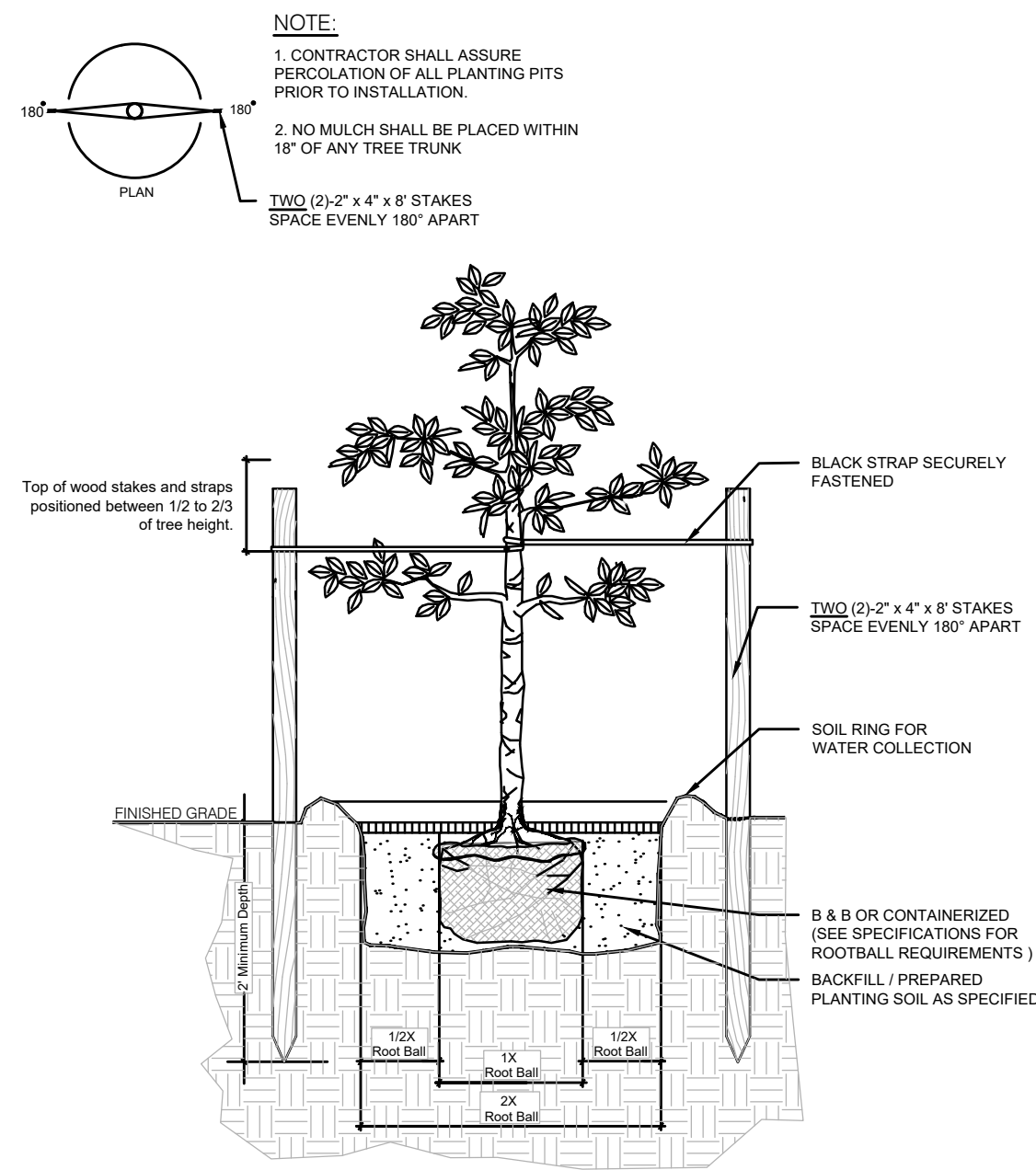


PROJECT NO.
 1906-3
 SCALE
 NTS
 DATE
 May 2022
 SHEET
 L-001

CITY OF PORT ST. LUCIE PROJECT#
 COPSL Project No.:P22-180
 PSLUSD File No.: 5336C

Date:

Details

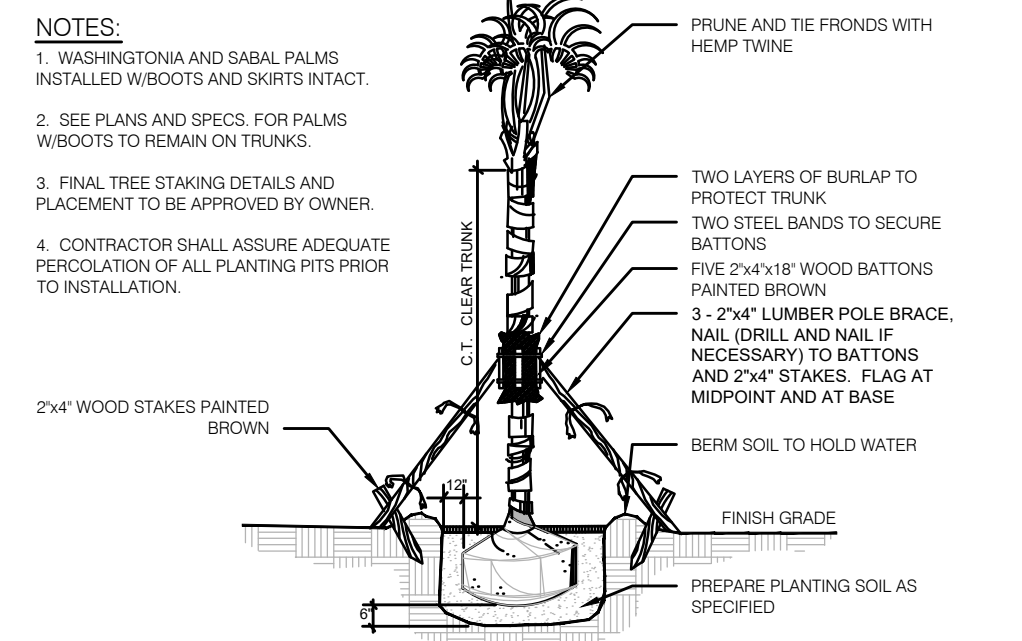


SMALL TREE GUYING DETAIL

Detail for trees between 1" and 2.5" cal.

NOT TO SCALE

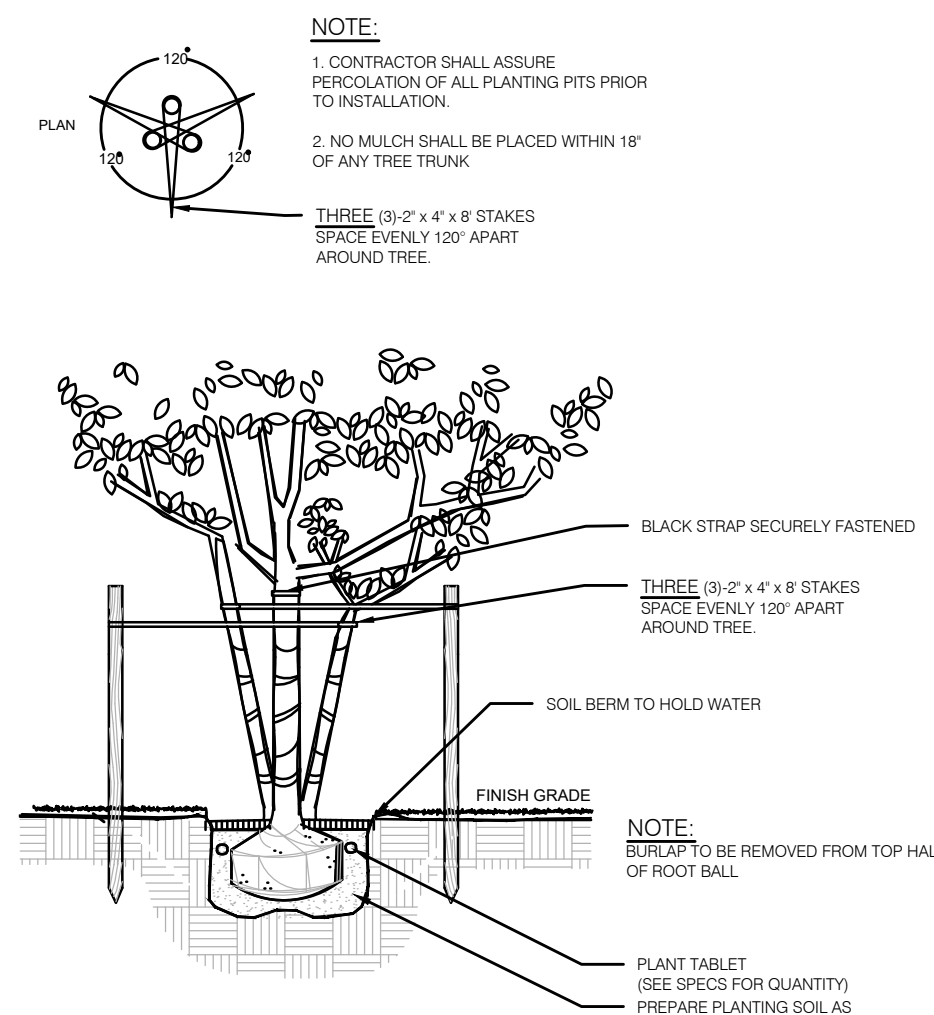
NOTE:
1. CONTRACTOR SHALL ASSURE PERCOLATION OF ALL PLANTING PITS PRIOR TO INSTALLATION.
2. NO MULCH SHALL BE PLACED WITHIN 18" OF ANY TREE TRUNK



PALM TREE GUYING DETAIL

NOT TO SCALE

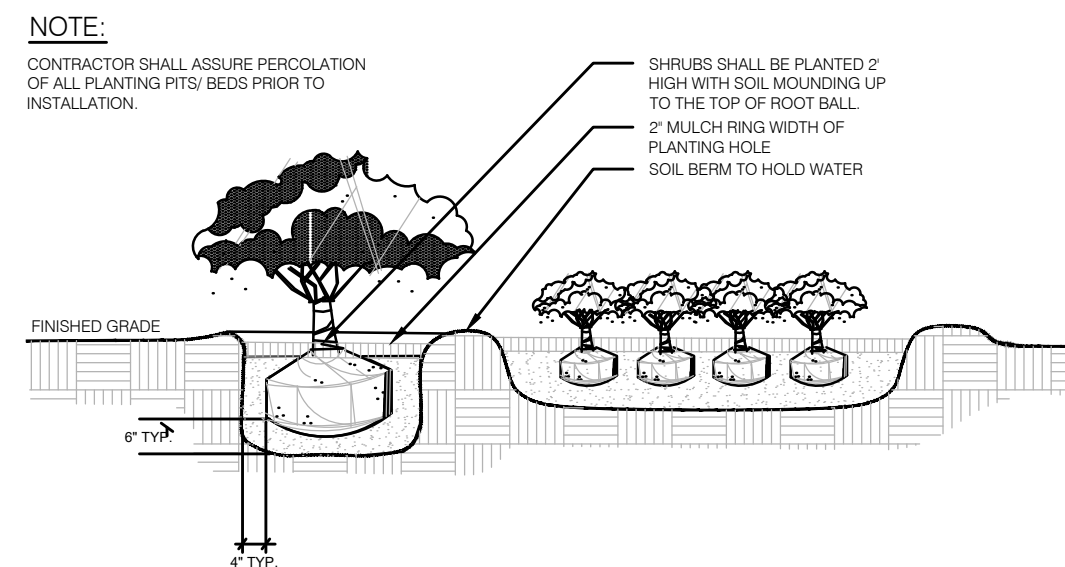
NOTES:
1. WASHINGTONIA AND SABAL PALMS INSTALLED W/BOOTS AND SKIRTS INTACT.
2. SEE PLANS AND SPECS. FOR PALMS W/BOOTS TO REMAIN ON TRUNKS.
3. FINAL TREE STAKING DETAILS AND PLACEMENT TO BE APPROVED BY OWNER.
4. CONTRACTOR SHALL ASSURE ADEQUATE PERCOLATION OF ALL PLANTING PITS PRIOR TO INSTALLATION.



MULTI-TRUNK TREE GUYING DETAIL

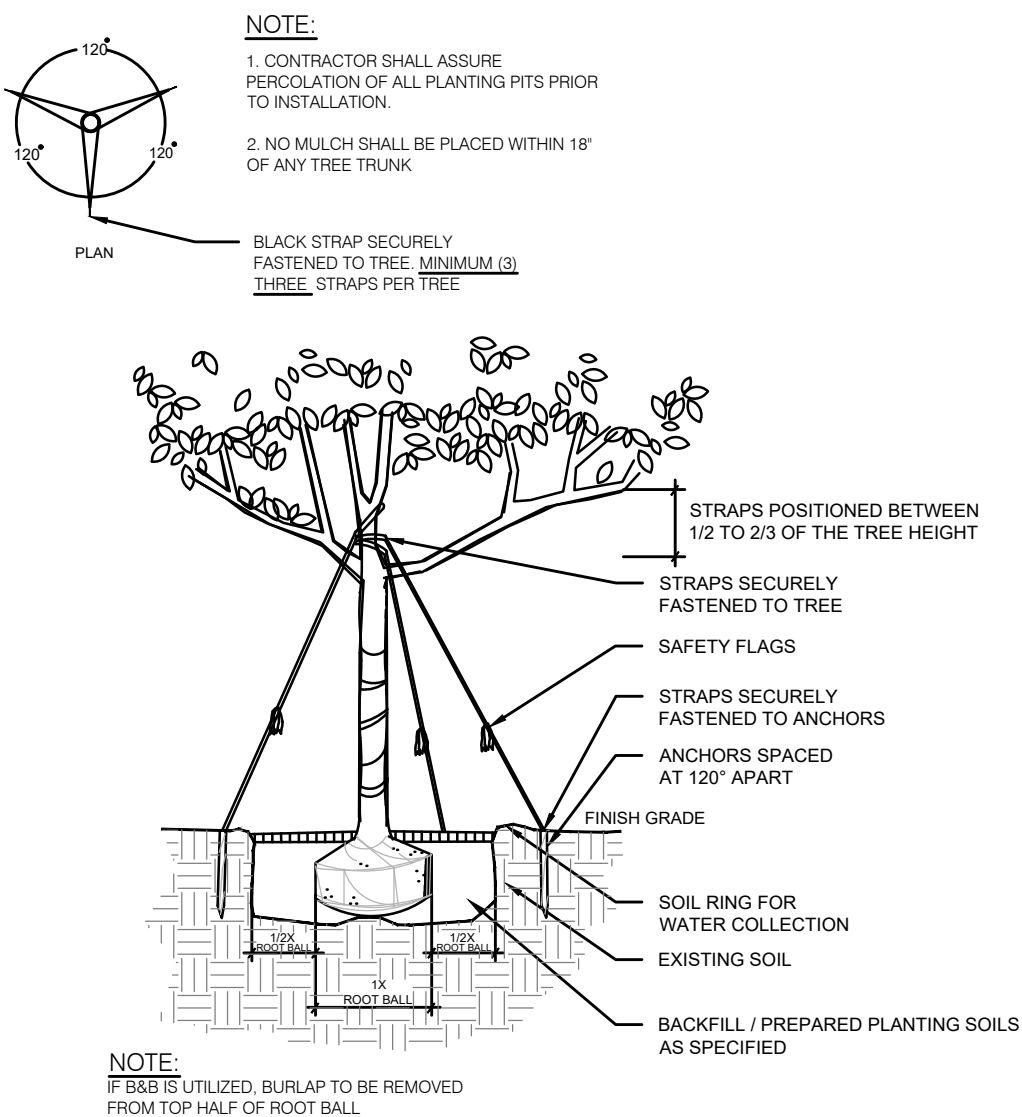
Detail for trees with more than 1 trunk.

NOT TO SCALE



SHRUB AND GROUND COVER DETAIL

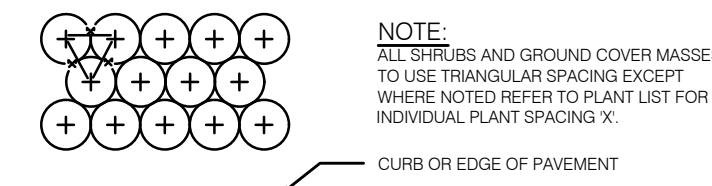
NOT TO SCALE



LARGE TREE GUYING DETAIL

Detail for trees greater than 3" cal.

NOT TO SCALE



TYPICAL PLANT SPACING

NOT TO SCALE

Landscape & Utilities

- No landscaping shall be planted in a manner that would adversely affect utility easement. Landscaping shall be in compliance with Chapter 154 of the City of Port St. Lucie Code of Ordinance, PSLUSD technical specifications and Policies.
- All landscaping within utility easement shall comply with PSLUSD technical specifications, policies, and codes.
- All Landscaping shall meet the latest PSLUSD Landscape Policy and shall not be placed in a manner that would create conflicts with the intended operation and maintenance of any utility.
- Trees shall not be planted within ten (10) feet of any PSLUSD underground infrastructure.
- No landscaping other than sod grasses shall be located within 5' of a PSLUSD appurtenance such as a water meter assembly, black-flow device, fire hydrant or sewer cleanouts, etc.
- Tree of species whose roots are known to cause damage to public roadways, utilities, sidewalks, or other public works shall not be planted closer than 10 feet to those public works.
- In those instances where a tree(s) is planted closer than ten (10) feet from a sidewalk, or structure, a root barrier(s) shall be installed. Root barriers for trees shall be installed along the edge of structure, paving, or curb. The root barrier shall be a minimum of twenty-four (24) inches deep, but depending on size, location, and species of tree to be planted, a larger barrier may be required. The root barrier shall be installed with twenty (20) linear feet, centered from the trunk, for large trees and fifteen (15) linear feet for smaller trees. All root barriers shall be linear.
- Vertical Clearance Over a Roadway. Trees that encroach into roadways shall be maintained in accordance with the St. Lucie County Fire District Fire Prevention Code.
- All landscape plans must show the location of existing or proposed utility lines that could be impacted by the vegetation being planted. No landscaping shall be planted in such a manner as to adversely affect drainage or underground or above ground utility facilities.
- No tree shall be planted where it could, at mature height, conflict with overhead power lines. Trees planted within any easement with overhead utilities shall comply with the latest edition of FPL's publication "Plant the Right Tree in the Right Place", and take into consideration the mature height and spread of the species beneath or adjacent to existing overhead utilities. Where overhead utilities exist, small trees, with a mature height of less than twenty (20) feet may be substituted for required shade trees at a ratio of 1:1.
- Trees to be 10' min. from street lights.

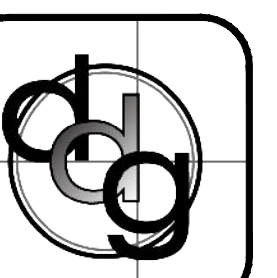
General Landscape Notes

- Landscape Contractor shall be responsible for all materials and plants as called for on the Landscape Plans. The list of plant quantities accompanying the plans shall be used as a guide only. Contractor shall verify all quantities and report any discrepancies at time of bidding.
- All plant material shall be graded Florida No. 1 of better, as outlined by "Grades and Standards for Nursery Plants", Florida Department of Agriculture and consumer services, Division of Plant Industry.
- All planting shall be top dressed with a minimum 2" Pine bark mini nuggets.
- The Landscape Contractor shall be wholly responsible for the stability and plumb condition of all trees and shrubs and shall be legally liable for any damage caused by instability of plant material. The staking method, if not shown by detail on this plan, shall be approved by the owner or his/her authorized representative.
- Every possible safeguard shall be taken to protect existing trees that are shown on the Landscape Plan to be preserved.
- The Landscape Contractor is responsible for cleaning all debris associated with their work.
- Height and spread specifications refer to the overall plant form. Singular branches may not be used to meet minimum requirements. Tree caliper size to be measured 12" above grade.
- All landscaping shall be installed according to accepted commercial planting procedures. Soil, shall be free of limerock, pebbles, or other constructions debris.
- All landscaping shall conform to the standards set forth in the Port St. Lucie LDC.
- Landscaping shall not interfere with power lines, sewer or water pipes or any other existing or proposed utilities.
- Prior to the issuance of any permits or the removal of any trees, protective tree barriers shall be installed around those trees that will remain on site and shall be inspected by the Governing Municipality.
- Ball & Burlap material shall be acceptable alternative to container grown trees.
- Occasionally there is the potential for site modification due to revised field grading, clearing of existing tree canopy or other unforeseen conditions. The Landscape contractor shall be responsible for informing the owner and Landscape Architect of site conditions adverse to the healthy establishment of any plant material prior to planting so that a resolution may be achieved.
- The Landscape Contractor shall be responsible for arranging a Pre-construction meeting with the owner and Landscape Architect in order to address and clarify any questions, concerns and/or conditions related to these drawings or the existing site.
- Landscape Contractor shall use appropriate container size to meet minimum plant height and caliper inches, if minimum plant height or caliper, can not be met with specified container size.

daly design group inc.
 Urban Planning, Landscape Architecture, Project Management, Development Consulting
 913 N Pennsylvania Ave, Winter Park, FL 32789 (407) 740-7373 www.dalydesign.com

REV.	DATE	DESCRIPTION	BY
3	02/07/23	Revision Per City Comments.	nrb
2	10/25/22	Revision Per City Comments.	nrb
1	08/01/22	Revision Per City Comments.	nrb

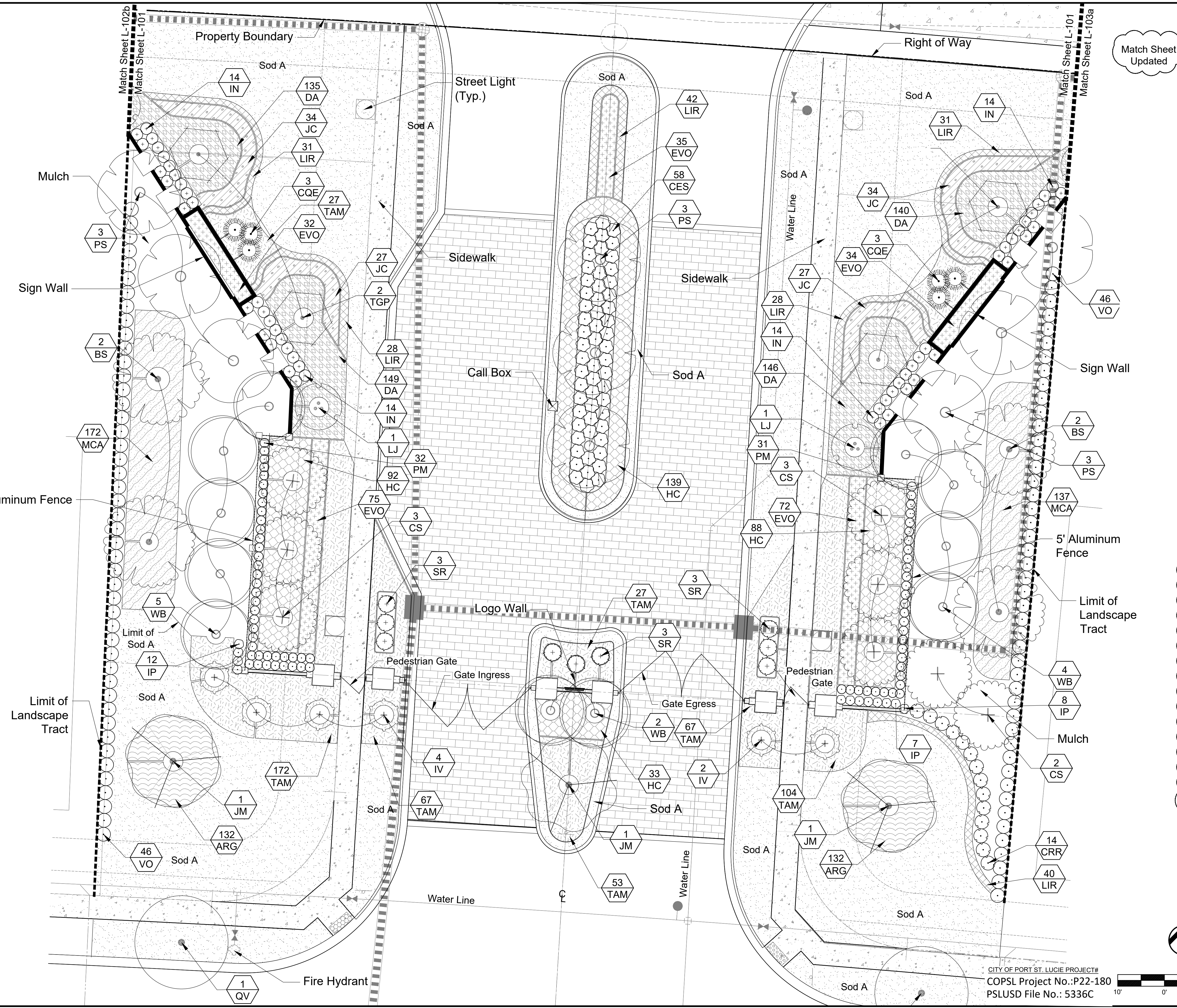
Landscape Details
Landscape Construction Plans
Belterra Tradition Phase II
 Port St. Lucie, FL



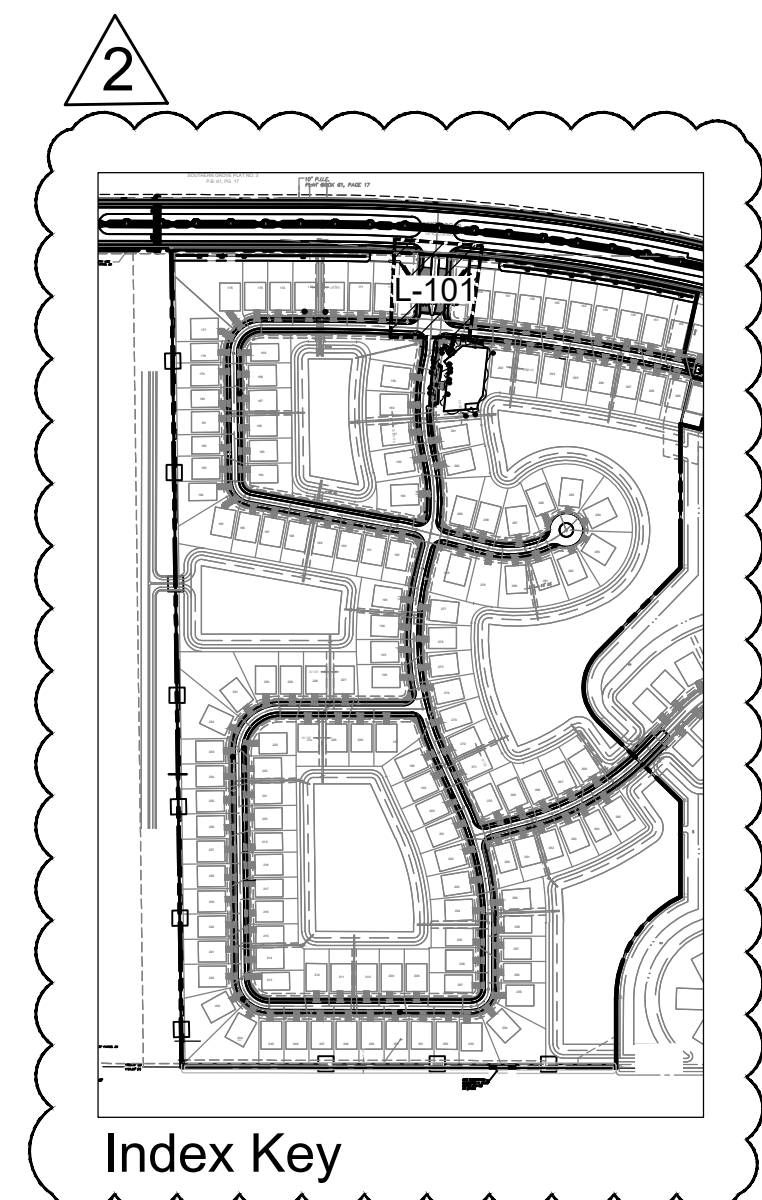
PROJECT NO.	1906-3
SCALE	NTS
DATE	May 2022
SHEET	L-002

CITY OF PORT ST. LUCIE PROJECT#
 COPSL Project No.: P22-180
 PSLUSD File No.: 5336C

Date:



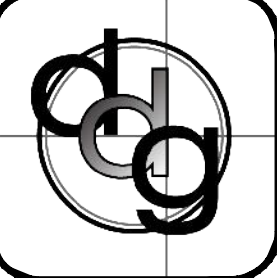
Match Sheet ²
Updated



daly design group inc.
Urban Planning, Landscape Architecture, Project Management, Development Consulting
913 N Pennsylvania Ave, Winter Park, FL 32789 (407) 740-7373 www.dalydesign.com

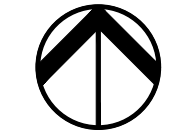
REV	DATE	DESCRIPTION	BY
3	02.07.23	Revision Per City Comments.	mb
2	10.25.22	Revision Per City Comments.	mb
1	08.01.22	Revision Per City Comments.	mb

Entrance Landscape Plan
Landscape Construction Plans
Belterra Tradition Phase II
Port St. Lucie, Florida

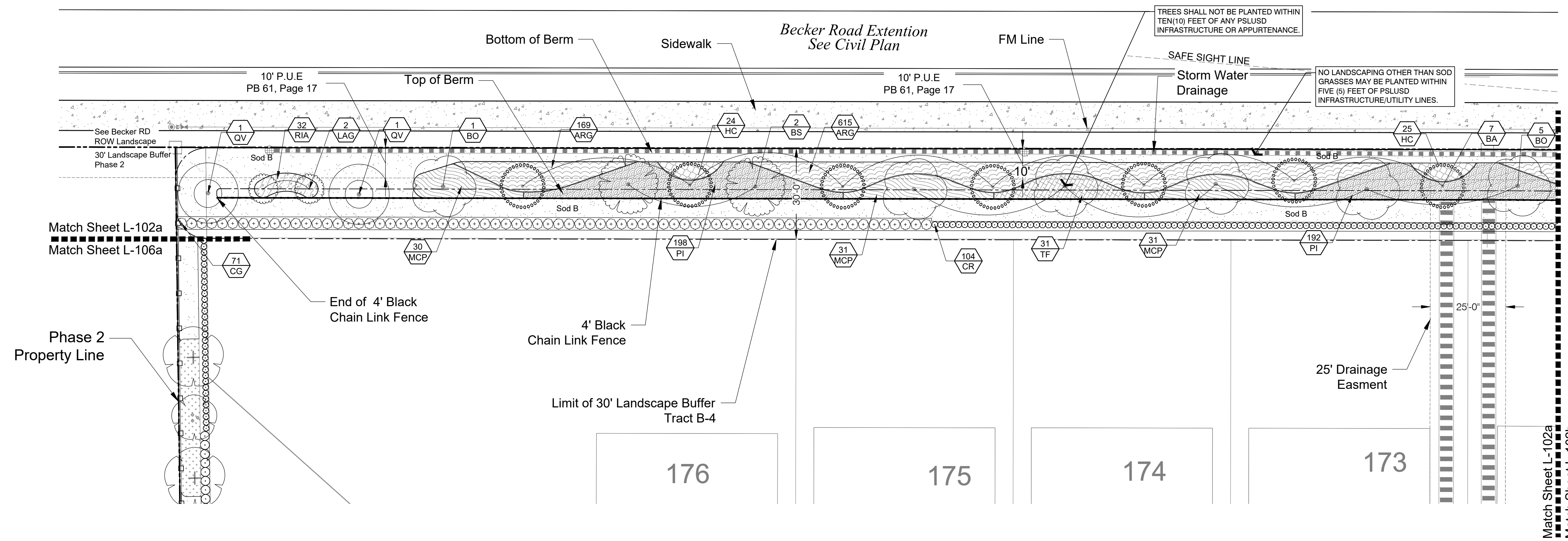


PROJECT NO.
1906
SCALE
1" = 10'
DATE
May 2022
SHEET
L-101

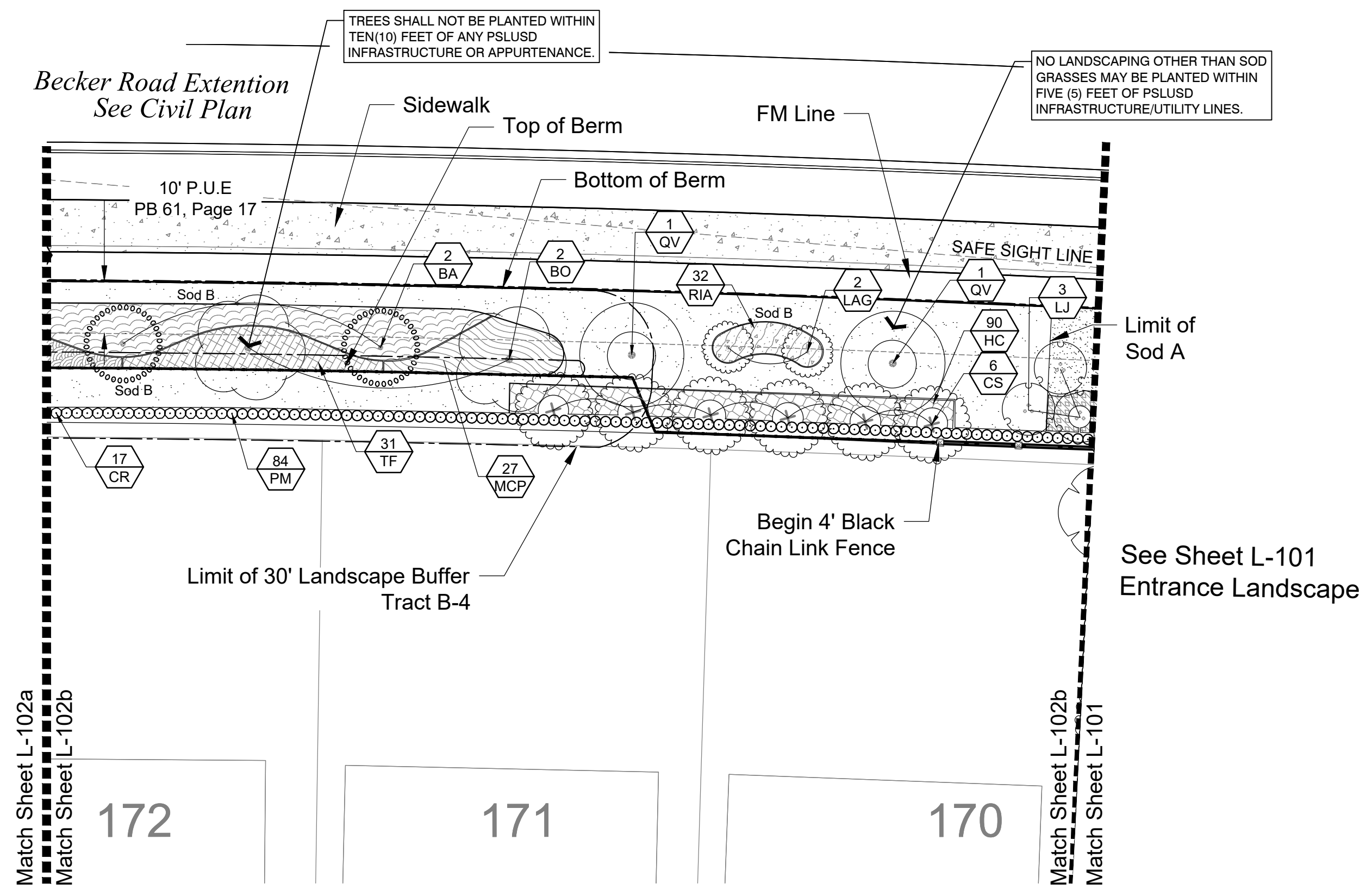
CITY OF PORT ST. LUCIE PROJECT#
COPSL Project No.: P22-180
PSLUSD File No.: 5336C



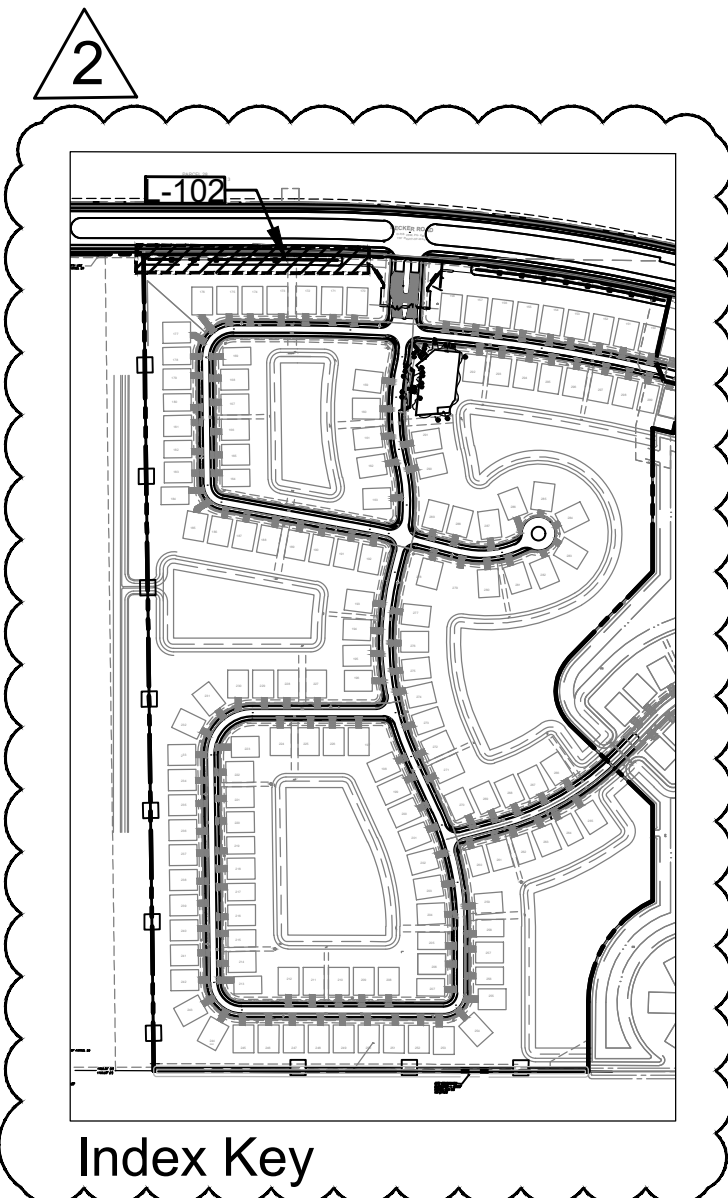
Date: _____



A 30' Landscape Buffer North (West side of Entrance)
 PLAN SCALE: 1"=20'



B 30' Landscape Buffer North (West Side of Entrance)
 PLAN SCALE: 1"=20'

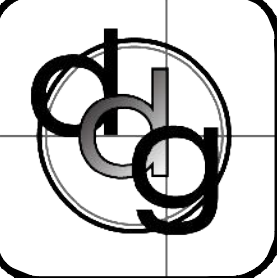


Match Sheet Updated 2

daly design group inc.
 Urban Planning, Landscape Architecture, Project Management, Development Consulting
 913 N Pennsylvania Ave, Winter Park, FL 32789 (407) 740-7373 www.dalydesign.com

REV	DATE	DESCRIPTION	BY
3	02/07/23	Revision Per City Comments.	nrb
2	10/25/22	Revision Per City Comments.	nrb
1	08/01/22	Revision Per City Comments.	nrb

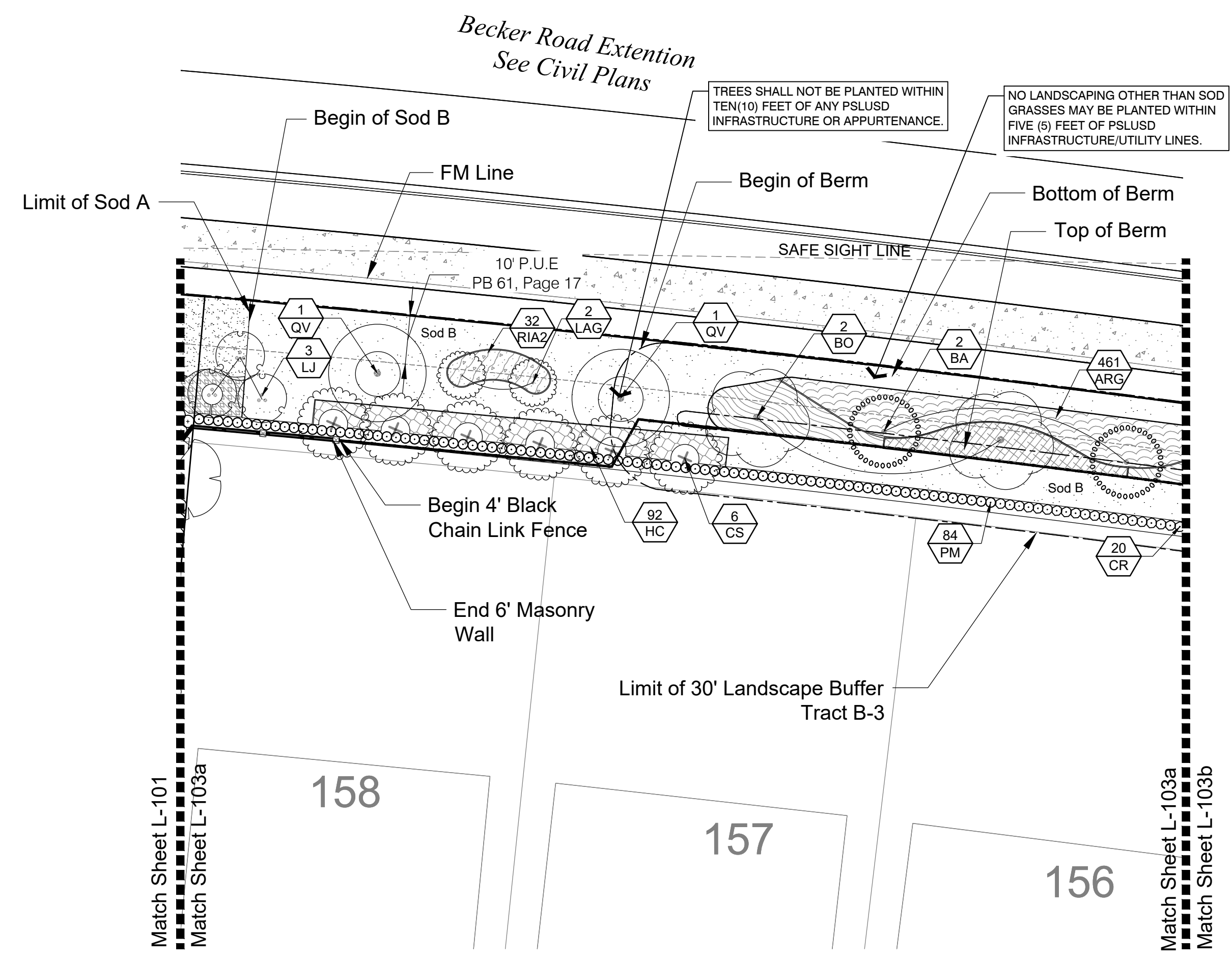
30' North Buffer Landscape Plans
 Landscape Construction Plans
 Belterra Tradition Phase II
 Port St. Lucie, Florida



CITY OF PORT ST. LUCIE PROJECT#
 COPSL Project No.: P22-180
 PSLUSD File No.: 5336C

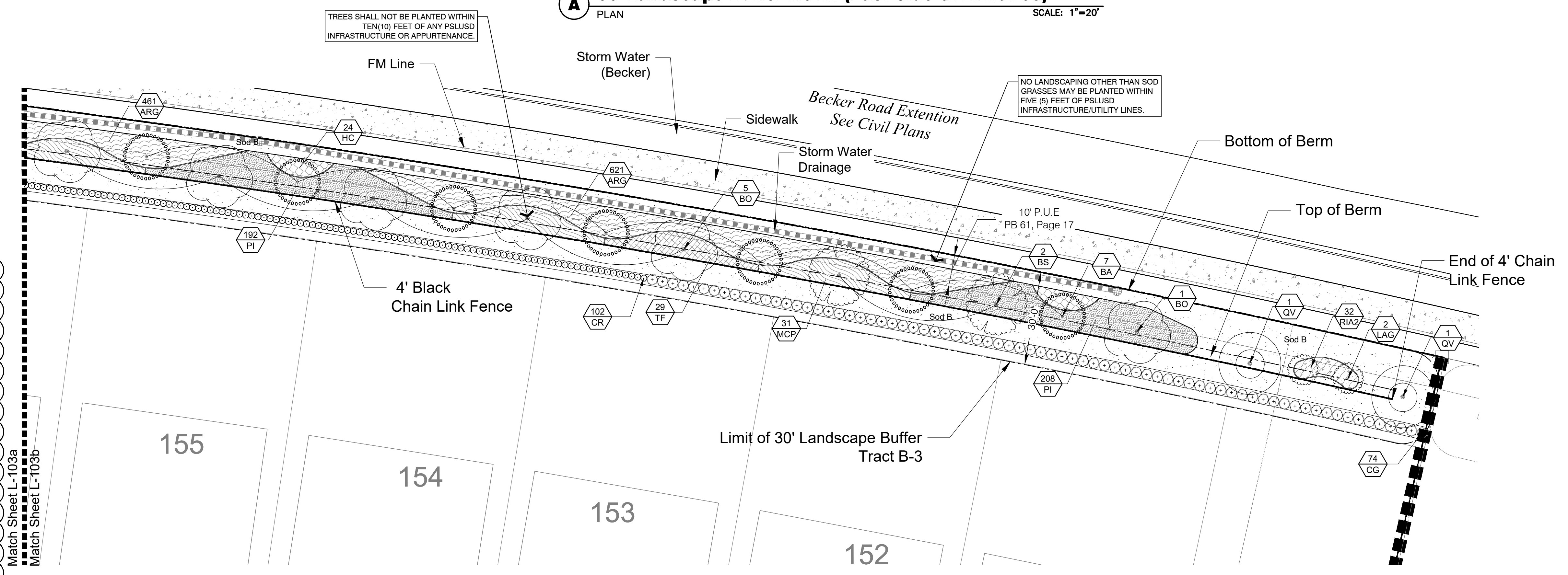


PROJECT NO.
 1906
 SCALE
 1" = 20'
 DATE
 May 2022
 SHEET
 L-102

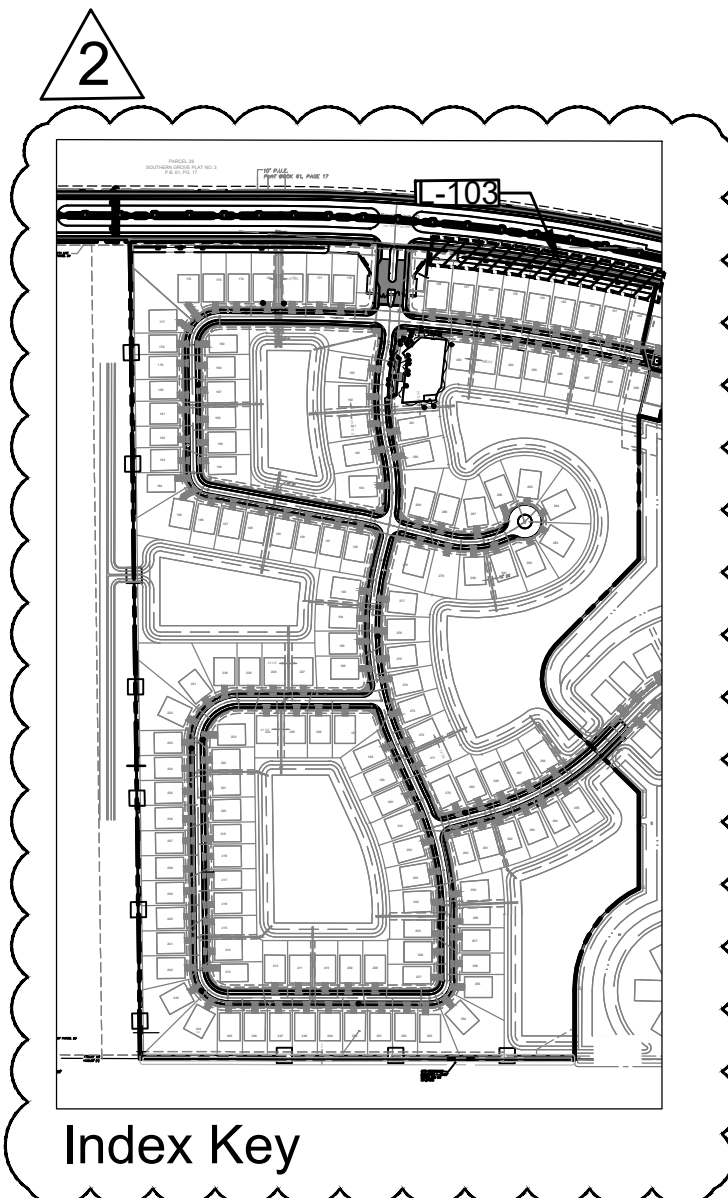


Match Sheet Updated

A 30' Landscape Buffer North (East Side of Entrance)
PLAN SCALE: 1"=20'



B 30' Landscape Buffer North (East Side of Entrance)
PLAN SCALE: 1"=20'



CITY OF PORT ST. LUCIE PROJECT#
COPSL Project No.: P22-180
PSLUSD File No.: 5336C

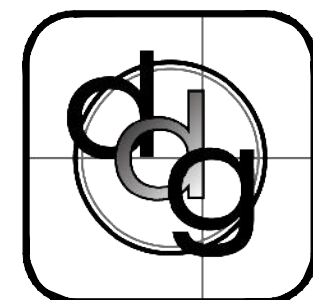
1' 0" 20'

Date: _____

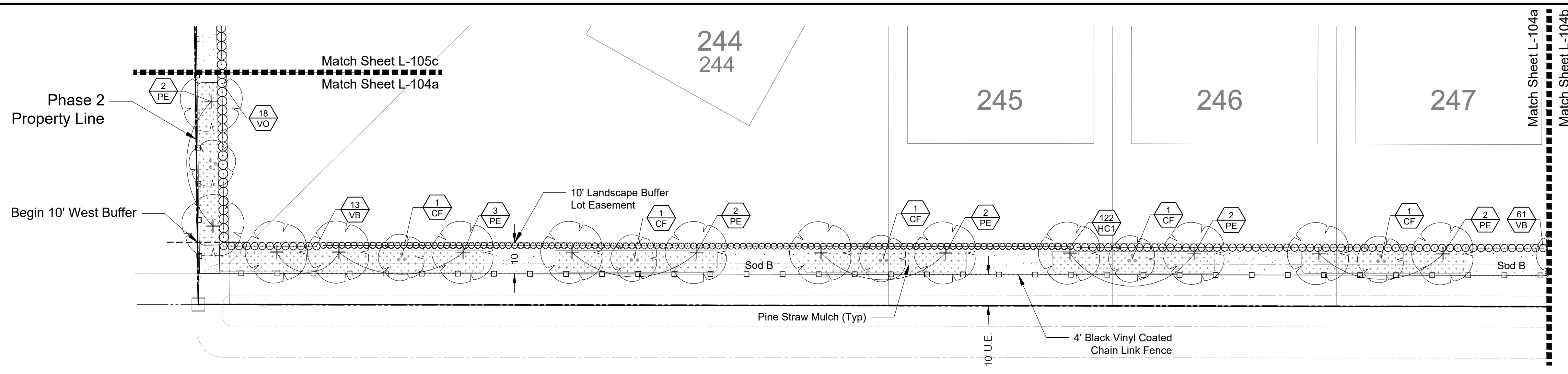
daly design group inc.
Urban Planning, Landscape Architecture, Project Management, Development Consulting
913 N Pennsylvania Ave, Winter Park, FL 32789 (407) 740-7373 www.dalydesign.com

REV	DATE	DESCRIPTION	BY
3	02.07.23	Revision Per City Comments.	nrb
2	10.25.22	Revision Per City Comments.	nrb
1	08.01.22	Revision Per City Comments.	nrb

30' North Buffer Landscape Plans
Landscape Construction Plans
Belterra Tradition Phase II
Port St. Lucie, Florida

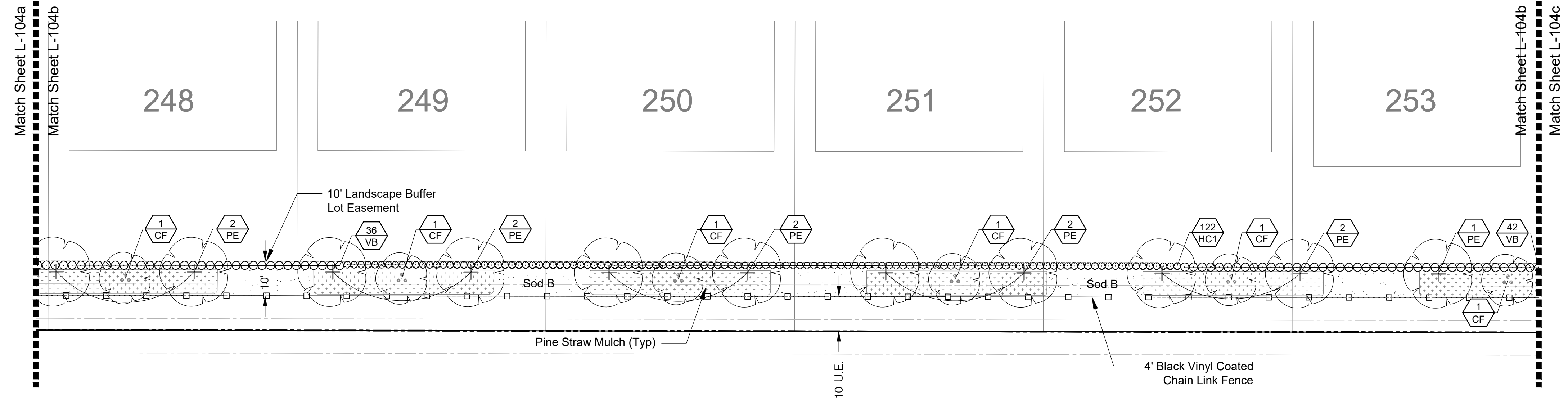


PROJECT NO.
1906
SCALE
1" = 20'
DATE
May 2022
SHEET
L-103



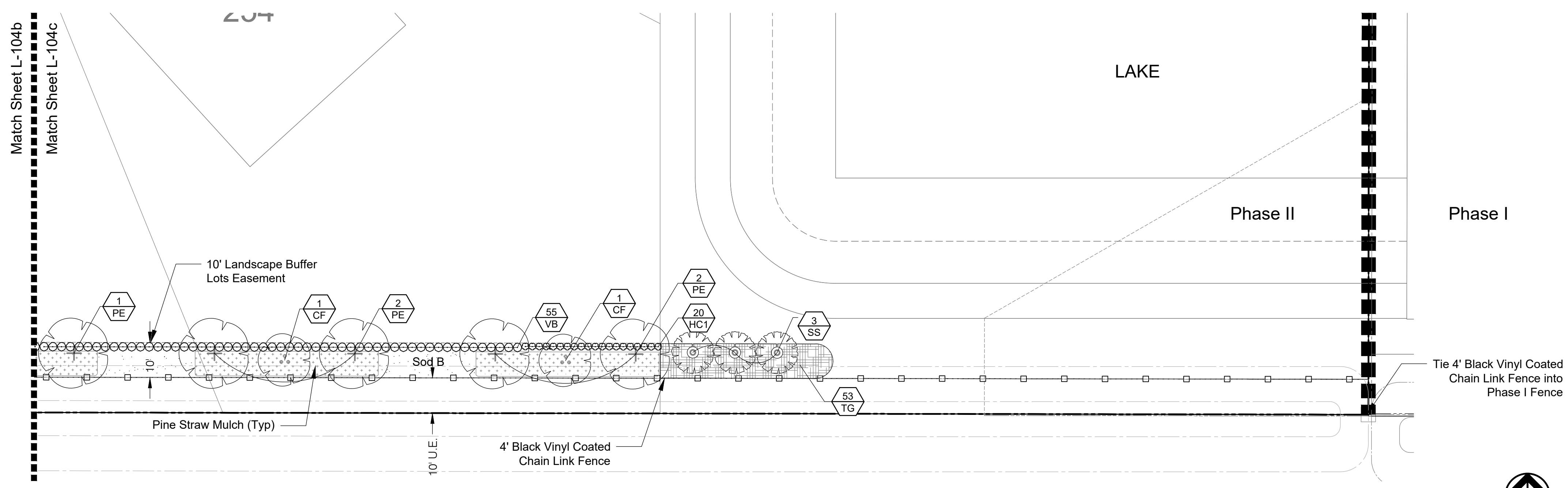
A 10' Buffer - South
PLAN SCALE: 1"=20'

Match Sheet Updated ²



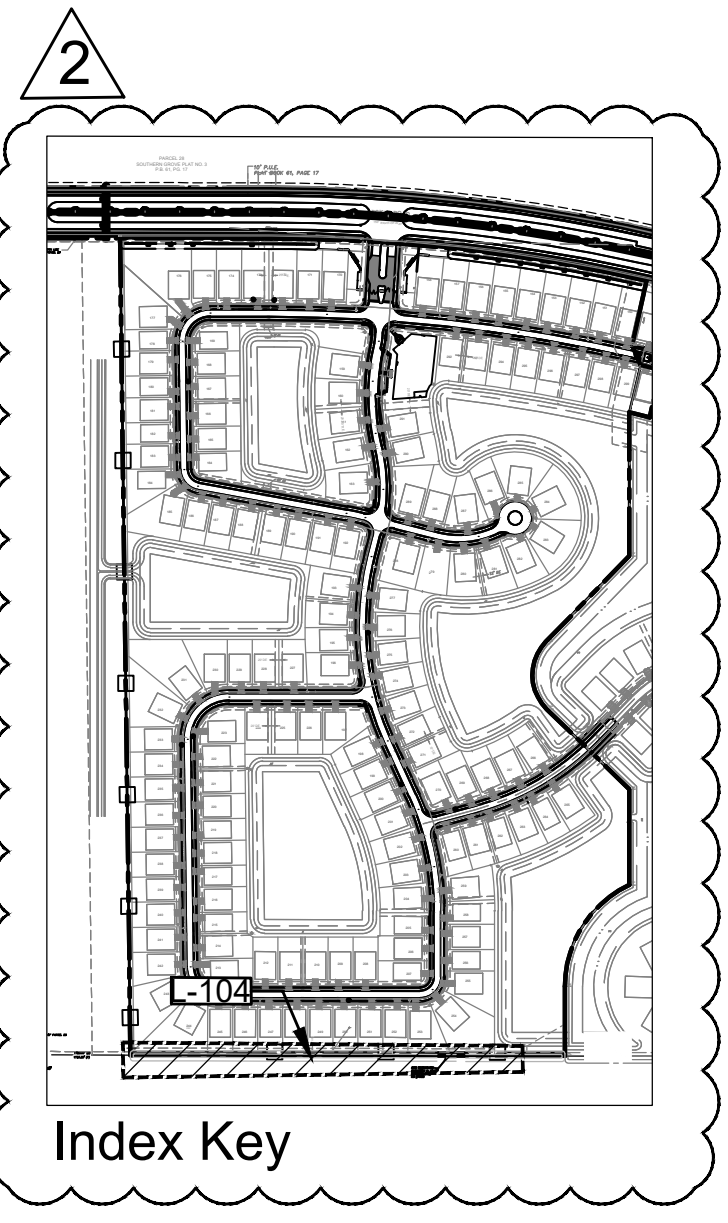
B 10' Buffer - South
PLAN SCALE: 1"=20'

Revision ²
10' South Landscape Buffer moved to 10' easement on lots.



C 10' Buffer - South
PLAN SCALE: 1"=20'

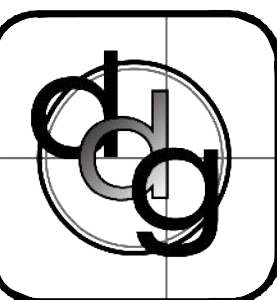
CITY OF PORT ST. LUCIE PROJECT#
COPSL Project No.: P22-180
PSLUSD File No.: 5336C



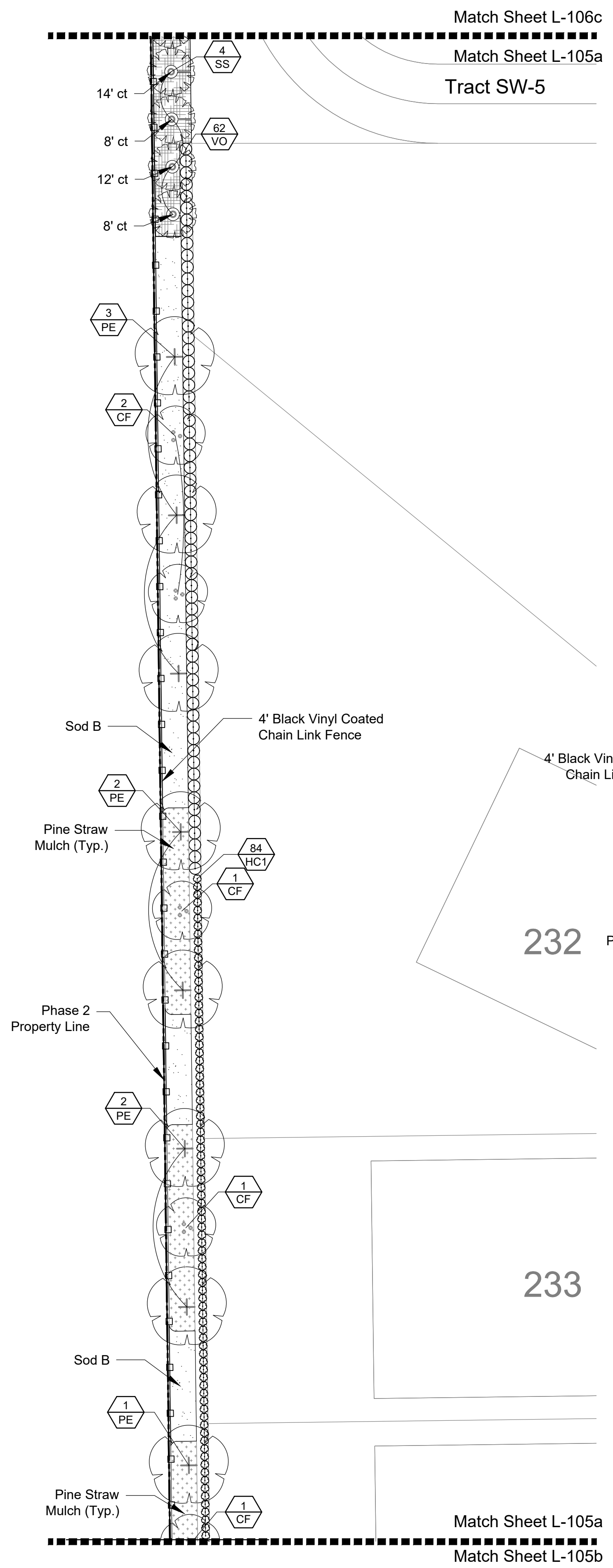
daly design group inc.
Urban Planning, Landscape Architecture, Project Management, Development Consulting
913 N Pennsylvania Ave, Winter Park, FL 32789 (407) 740-7373 www.dalydesign.com

REV	DATE	DESCRIPTION	BY
3	02/07/23	Revision Per City Comments.	nfb
2	10/25/22	Revision Per City Comments.	nfb
1	08/01/22	Revision Per City Comments.	nfb

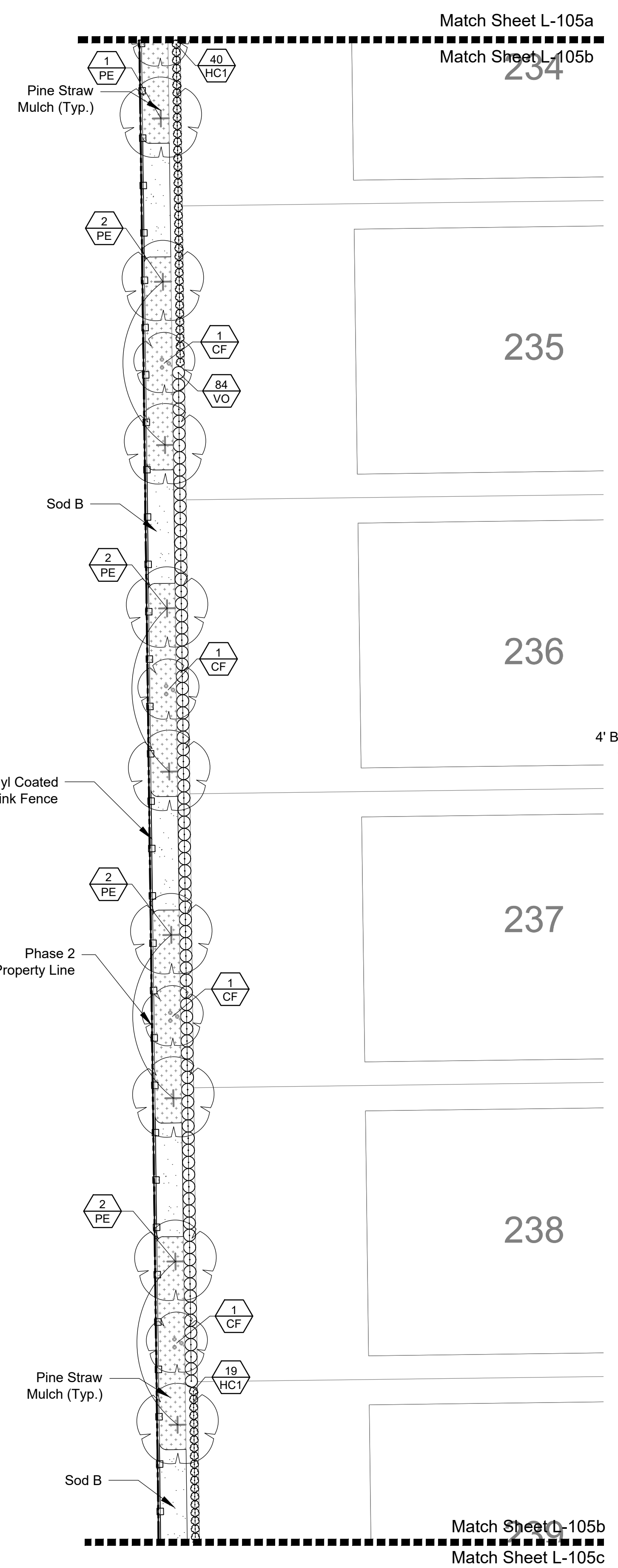
10' South Landscape Buffer
Landscape Construction Plans
Belterra Tradition Phase II
Port St. Lucie, Florida



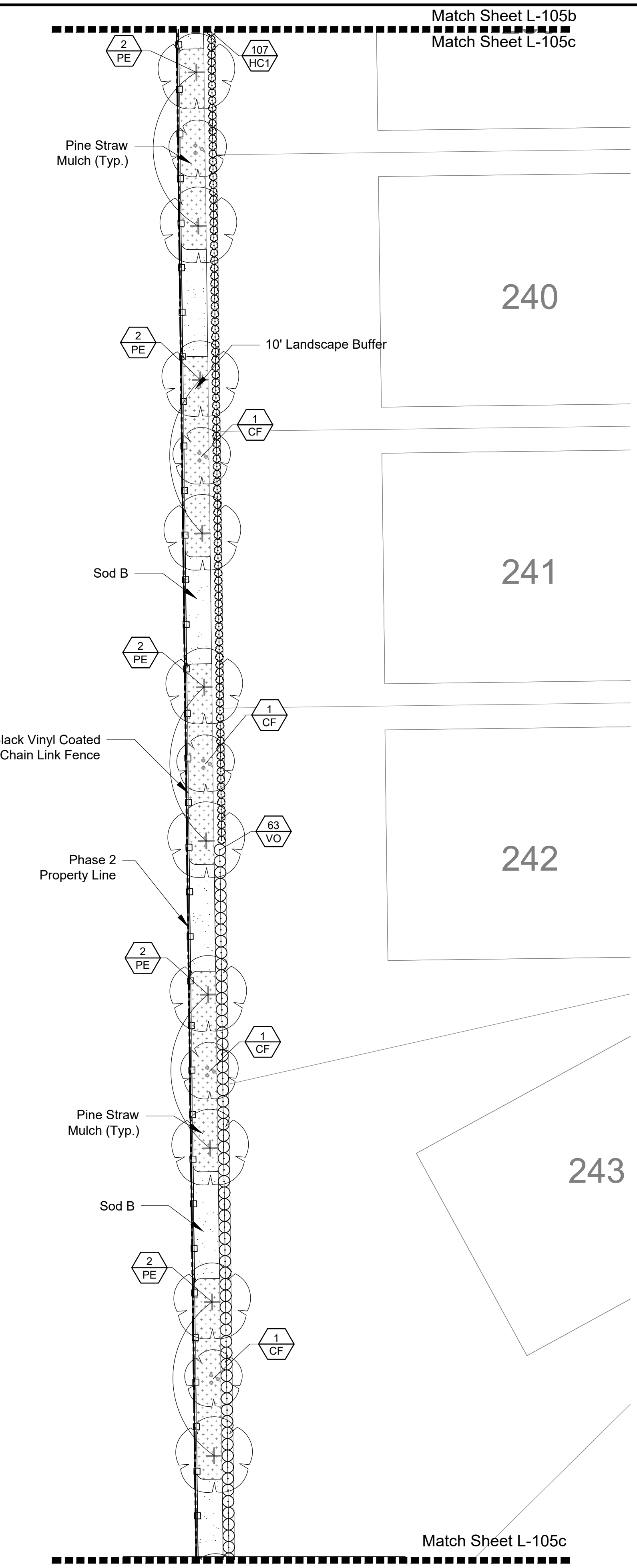
PROJECT NO.
1906
SCALE
1" = 20'
DATE
April 2022
SHEET
L-104



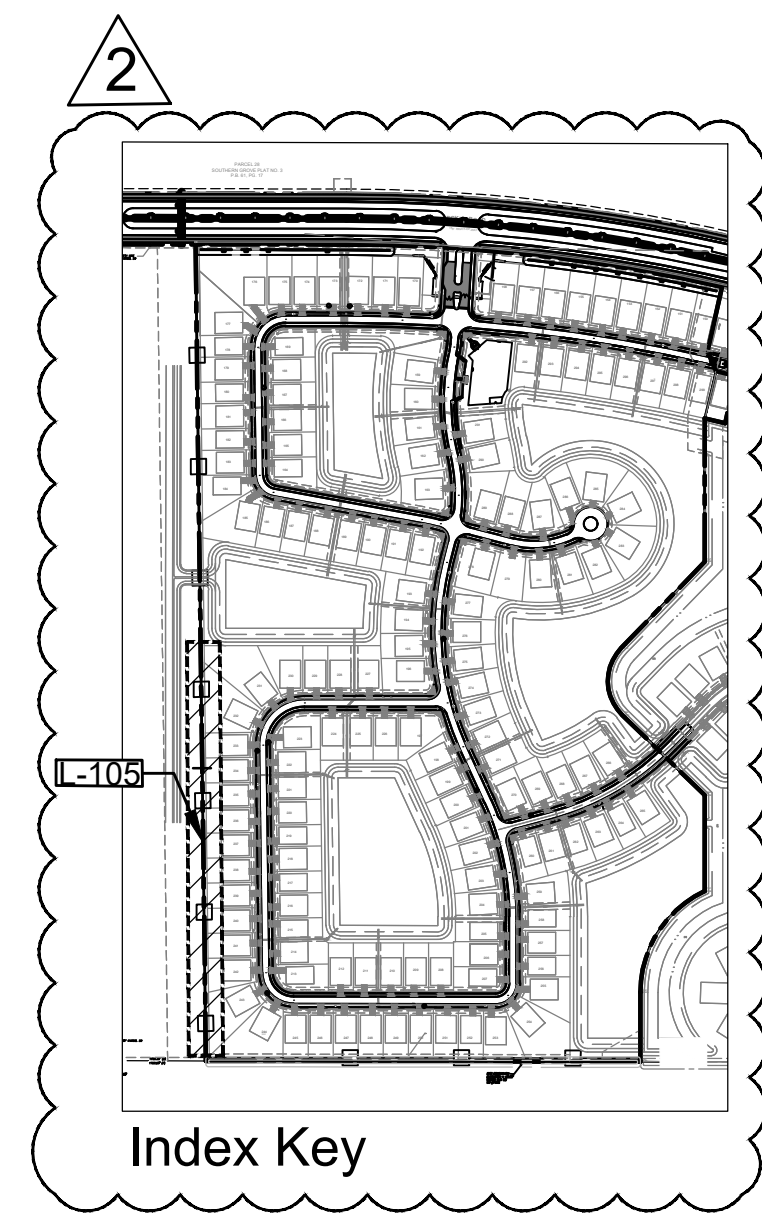
A 10' Buffer - West
PLAN SCALE: 1"=20'



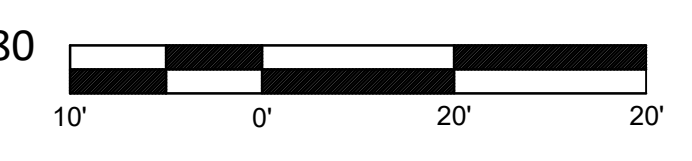
B 10' Buffer - West
PLAN SCALE: 1"=20'



C 10' Buffer - West
PLAN SCALE: 1"=20'



Match Sheet Updated 2

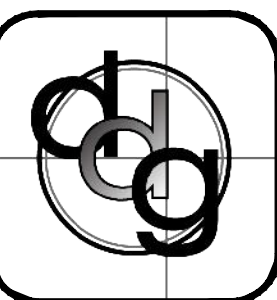


CITY OF PORT ST. LUCIE PROJECT#
COPSL Project No.: P22-180
PSLUSD File No.: 5336C

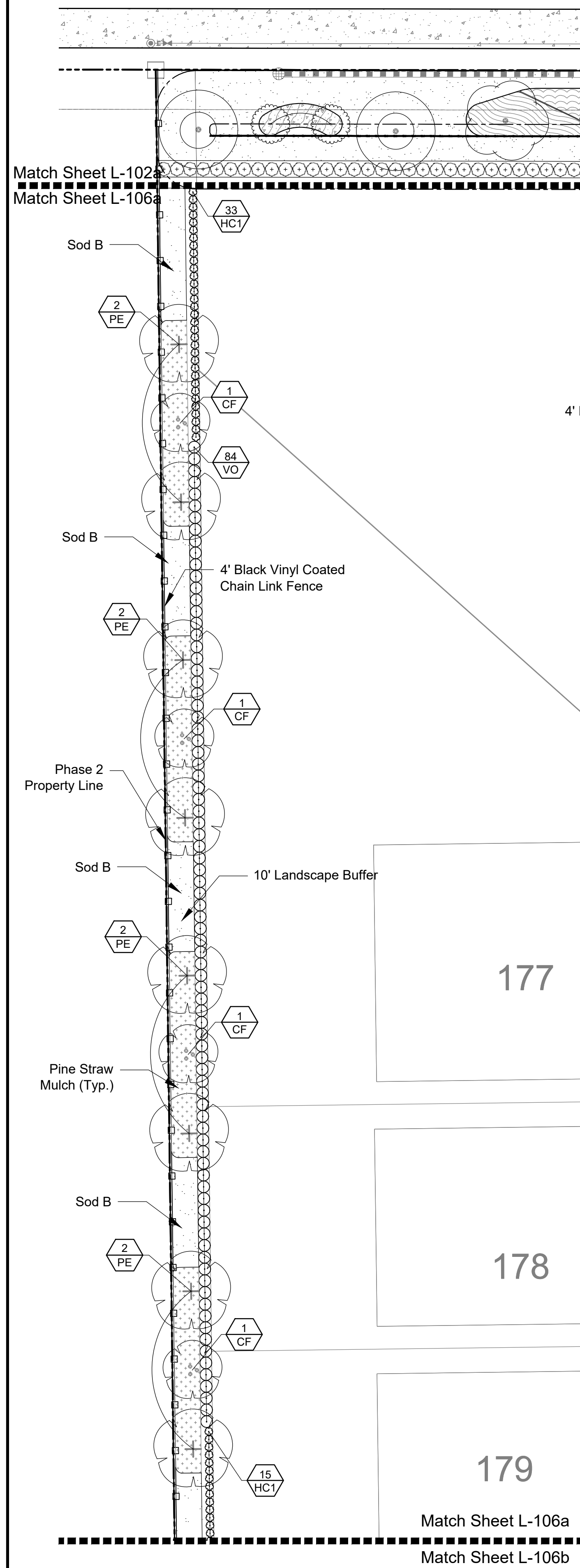
daly design group inc.
Urban Planning, Landscape Architecture, Project Management, Development Consulting
913 N Pennsylvania Ave, Winter Park, FL 32789 (407) 740-7373 www.dalydesign.com

REV	DATE	DESCRIPTION	BY
3	02/07/23	Revision Per City Comments.	nfb
2	10/25/22	Revision Per City Comments.	nfb
1	08/01/22	Revision Per City Comments.	nfb

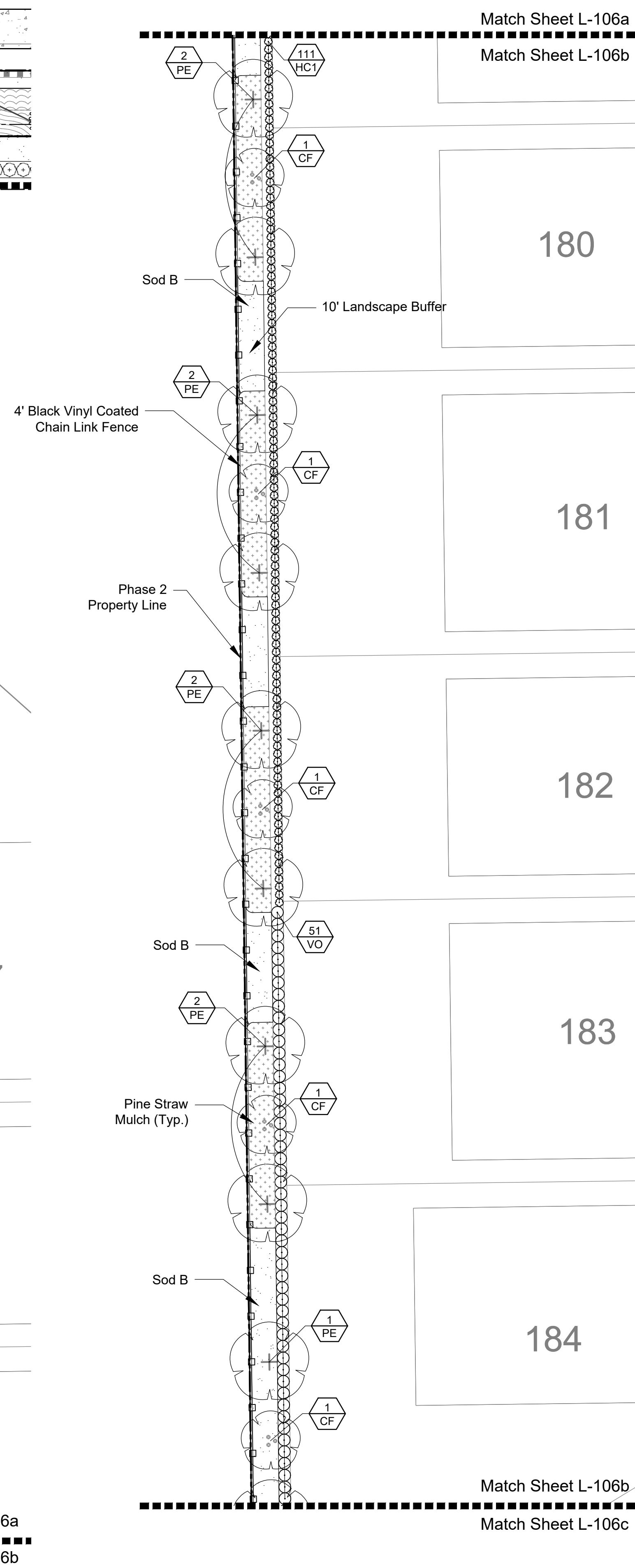
10' West Landscape Buffer
Landscape Construction Plans
Belterra Tradition Phase II
Port St. Lucie, Florida



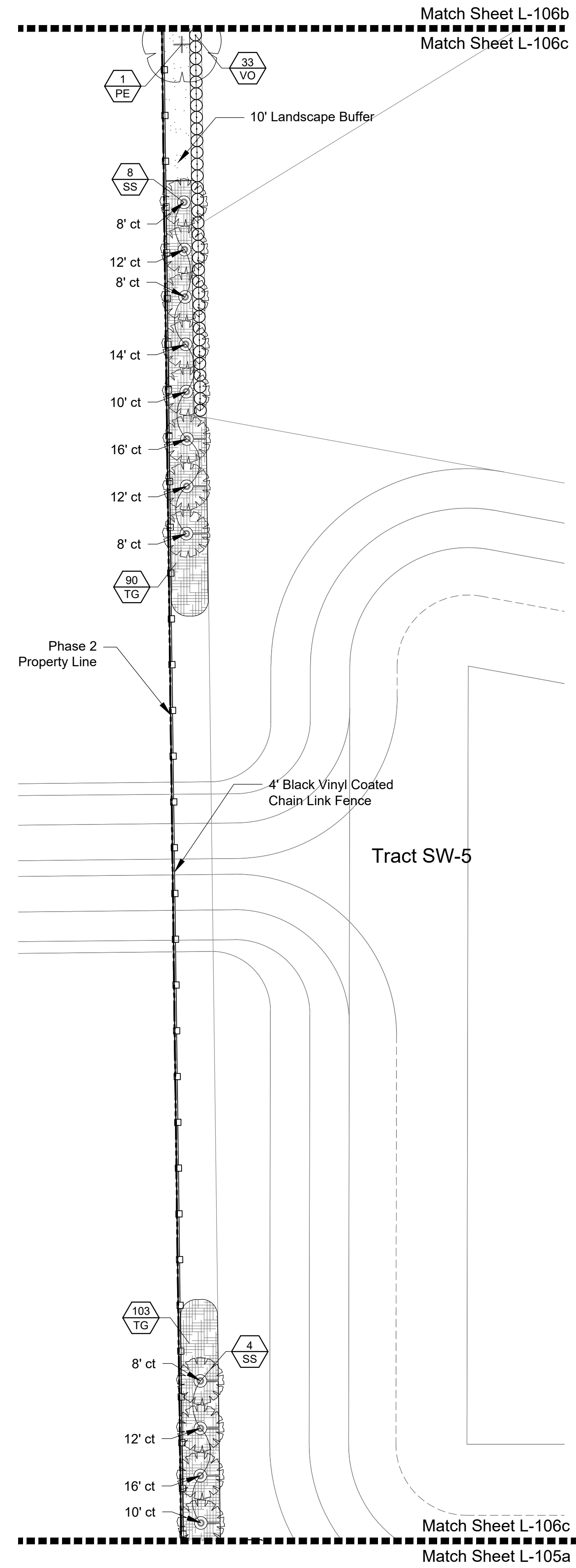
PROJECT NO.
1906
SCALE
1" = 20'
DATE
April 2022
SHEET
L-105



A 10' Buffer - West
PLAN SCALE: 1"=20'

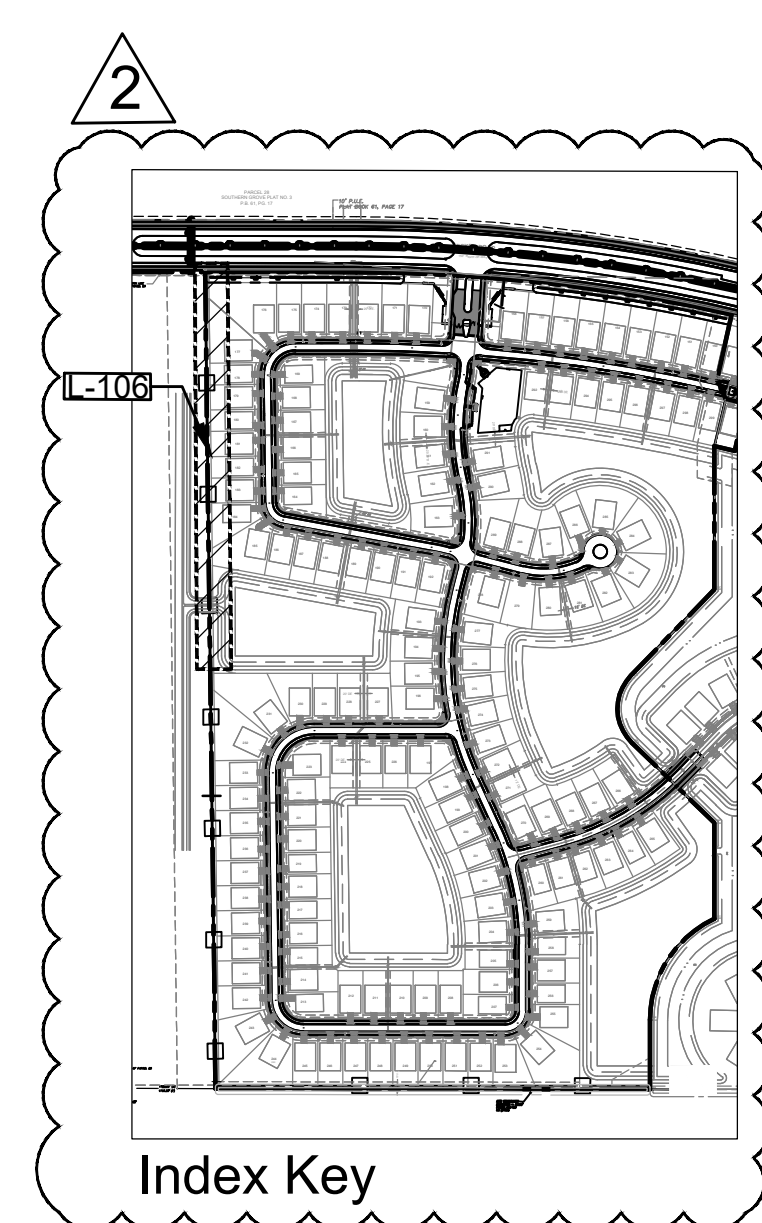


B 10' Buffer - West
PLAN SCALE: 1"=20'

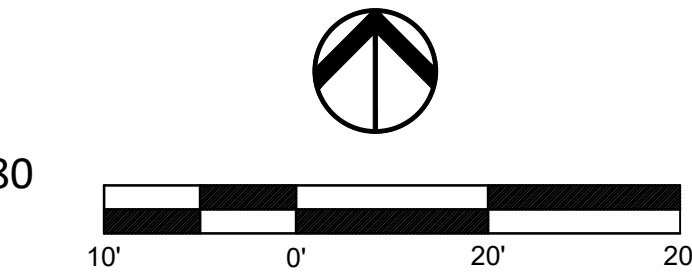


C 10' Buffer - West
PLAN SCALE: 1"=20'

Match Sheet Updated **2**



CITY OF PORT ST. LUCIE PROJECT#
COPSL Project No.: P22-180
PSLUSD File No.: 5336C

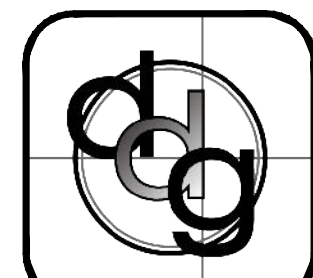


DATE:	
-------	--

daly design group inc.
Urban Planning, Landscape Architecture, Project Management, Development Consulting
913 N Pennsylvania Ave, Winter Park, FL 32789 (407) 740-7373 www.dalydesign.com

REV	DATE	DESCRIPTION	BY
3	02 07 23	Revision Per City Comments.	nfb
2	10 25 22	Revision Per City Comments.	nfb
1	09 01 22	Revision Per City Comments.	nfb

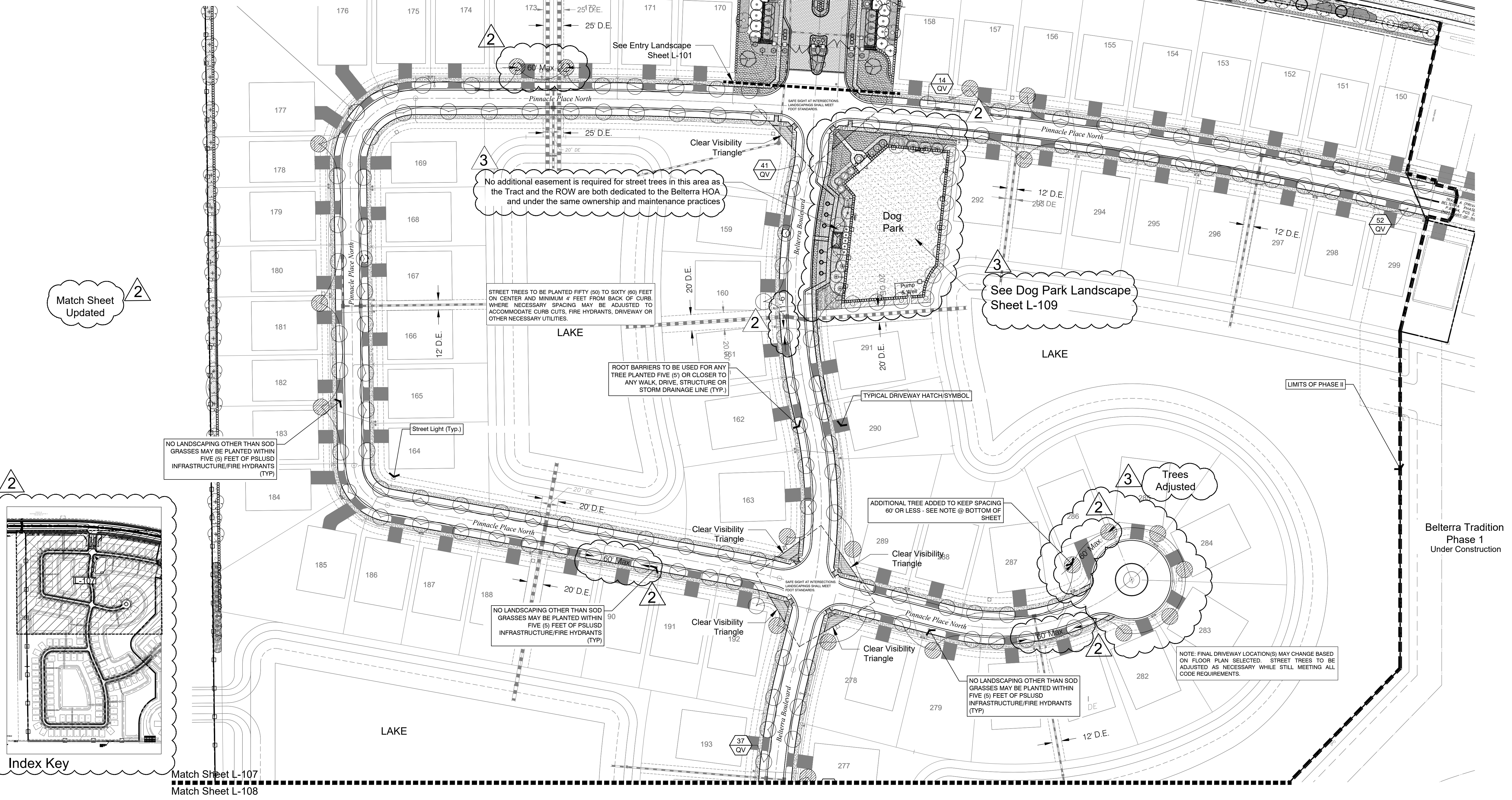
10' West Landscape Buffer
Landscape Construction Plans
Belterra Tradition Phase II
Port St. Lucie, Florida



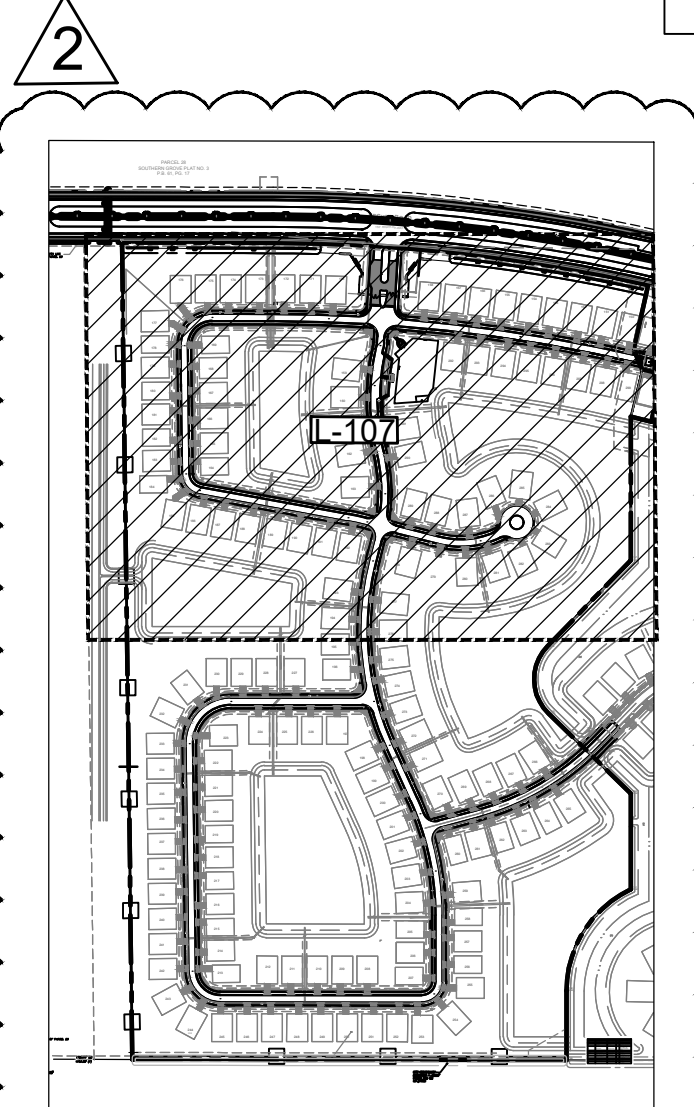
PROJECT NO.
1906
SCALE
1" = 20'
DATE
April 2022
SHEET
L-106

STREET TREE PLANT LIST

TREES	BOTANICAL NAME	COMMON NAME	QTY	REMARKS
QV	Quercus virginiana	Southern Live Oak	295	MIN. .65 GAL., 14" ht., 3" CAL., MATCHED

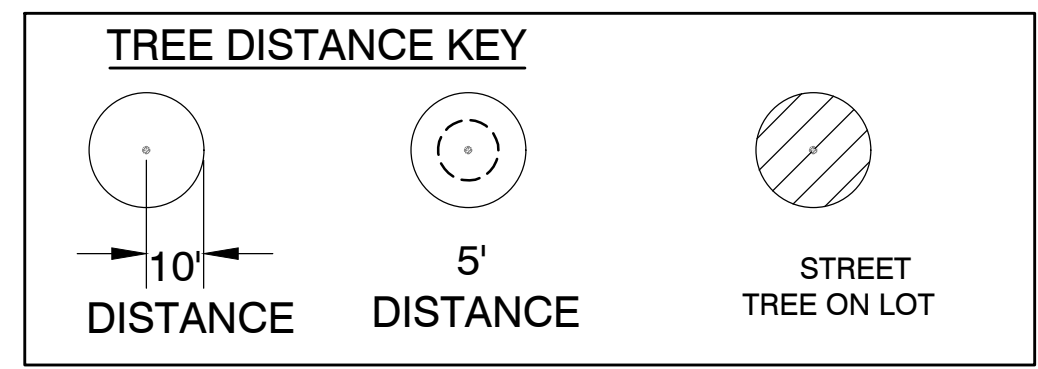


Match Sheet Updated



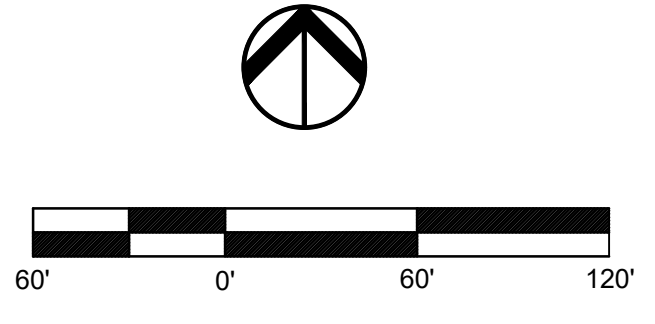
Index Key

Match Sheet L-107
Match Sheet L-108



NOTE:
IN THE EVENT THAT THE REQUIRED STREET TREE SPACING CAN NOT BE MET DUE TO A UTILITY OR HARDSCAPE CONFLICT, A STREET TREE CAN BE INSTALLED ON A LOT ADJACENT TO THE RIGHT OF WAY LINE TO SATISFY THE REQUIREMENT. WHEN LOTS ARE PLATTED, EACH SUCH LOT WILL REQUIRE A TREE EASEMENT TO BE PLACED, IN FAVOR OF THE BELTERRA HOMEOWNERS ASSOCIATION, INC.

CITY OF PORT ST. LUCIE PROJECT#
COPSL Project No.: P22-180
PSLUSD File No.: 5336C

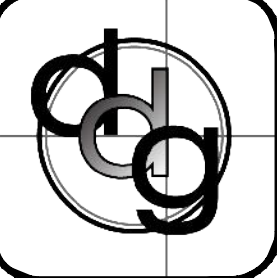


DATE:	
-------	--

daly design group inc.
Urban Planning, Landscape Architecture, Project Management, Development Consulting
913 N Pennsylvania Ave, Winter Park, FL 32789 (407) 740-7373 www.dalydesign.com

REV	DATE	DESCRIPTION	BY
3	02/07/23	Revision Per City Comments.	nib
2	10/25/22	Revision Per City Comments.	nib
1	08/01/22	Revision Per City Comments.	nib

Street Tree Plan
Landscape Construction Plans
Beltterra Tradition Phase II
Port St. Lucie, Florida

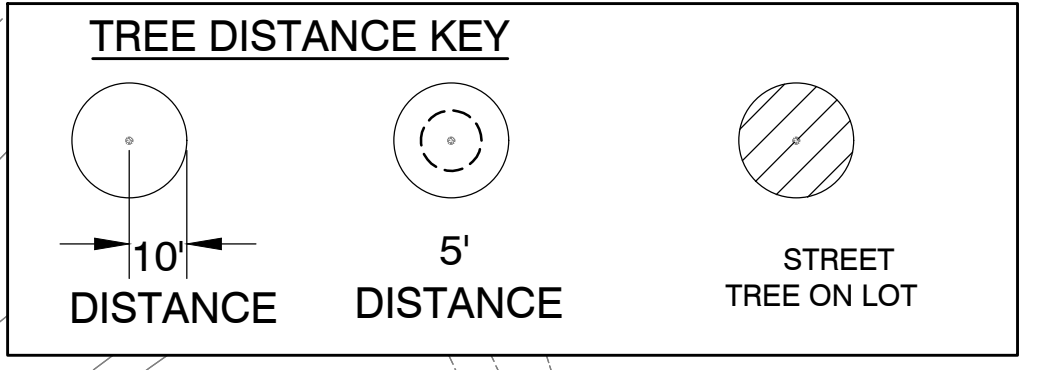


PROJECT NO.	1906
SCALE	1" = 60'
DATE	April 2022
SHEET	L-107

STREET TREE PLAN

STREET TREE PLAN

Match Sheet L-107
Match Sheet L-108



NOTE:
IN THE EVENT THAT THE REQUIRED STREET TREE SPACING CAN NOT BE MET DUE TO A UTILITY OR HARDSCAPE CONFLICT, A STREET TREE CAN BE INSTALLED ON A LOT ADJACENT TO THE RIGHT OF WAY LINE TO SATISFY THE REQUIREMENT. WHEN LOTS ARE PLATTED, EACH SUCH LOT WILL REQUIRE A TREE EASEMENT TO BE PLACED, IN FAVOR OF THE BELTERRA HOMEOWNERS ASSOCIATION, INC.

STREET TREES TO BE PLANTED FIFTY (50) TO SIXTY (60) FEET ON CENTER AND MINIMUM 4 FEET FROM BACK OF CURB. WHERE NECESSARY SPACING MAY BE ADJUSTED TO ACCOMMODATE CURB CUTS, FIRE HYDRANTS, DRIVEWAY OR OTHER NECESSARY UTILITIES.

Match Sheet Updated

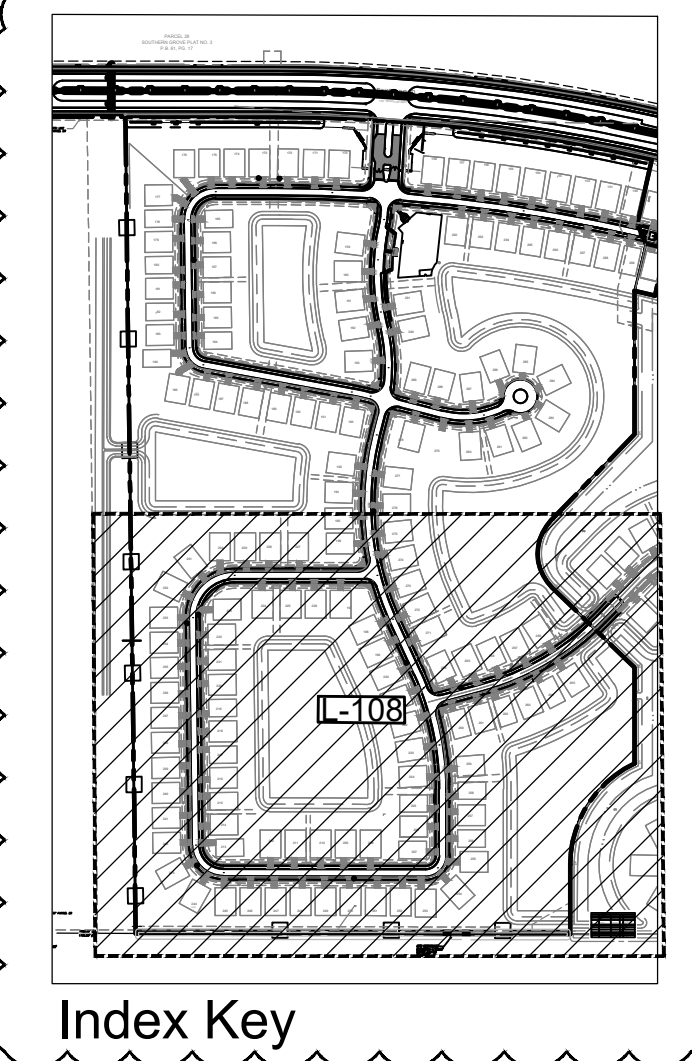
ADDITIONAL TREE ADDED TO KEEP SPACING 60' OR LESS - SEE NOTE @ TOP OF SHEET

NO LANDSCAPING OTHER THAN SOD GRASSES MAY BE PLANTED WITHIN FIVE (5) FEET OF PSLUSD INFRASTRUCTURE/FIRE HYDRANTS (TYP)

NO LANDSCAPING OTHER THAN SOD GRASSES MAY BE PLANTED WITHIN FIVE (5) FEET OF PSLUSD INFRASTRUCTURE/FIRE HYDRANTS (TYP)

ADDITIONAL TREE ADDED TO KEEP SPACING 60' OR LESS - SEE NOTE @ BOTTOM OF SHEET

NOTE: FINAL DRIVEWAY LOCATION(S) MAY CHANGE BASED ON FLOOR PLAN SELECTED. STREET TREES TO BE ADJUSTED AS NECESSARY WHILE STILL MEETING ALL CODE REQUIREMENTS.



CITY OF PORT ST. LUCIE PROJECT#
COPSL Project No.: P22-180
PSLUSD File No.: 5336C

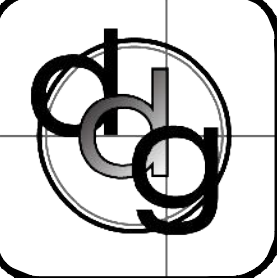


PROJECT NO.	1906
SCALE	1" = 60'
DATE	April 2022
SHEET	L-108

daly design group inc.
Urban Planning, Landscape Architecture, Project Management, Development Consulting
913 N Pennsylvania Ave, Winter Park, FL 32789 (407) 740-7373 www.dalydesign.com

REV	DATE	DESCRIPTION	BY
3	02/07/23	Revision Per City Comments	nfb
2	10/25/22	Revision Per City Comments	nfb
1	08/01/22	Revision Per City Comments	nfb

Street Tree Plan
Landscape Construction Plans
Belterra Tradition Phase II
Port St. Lucie, Florida



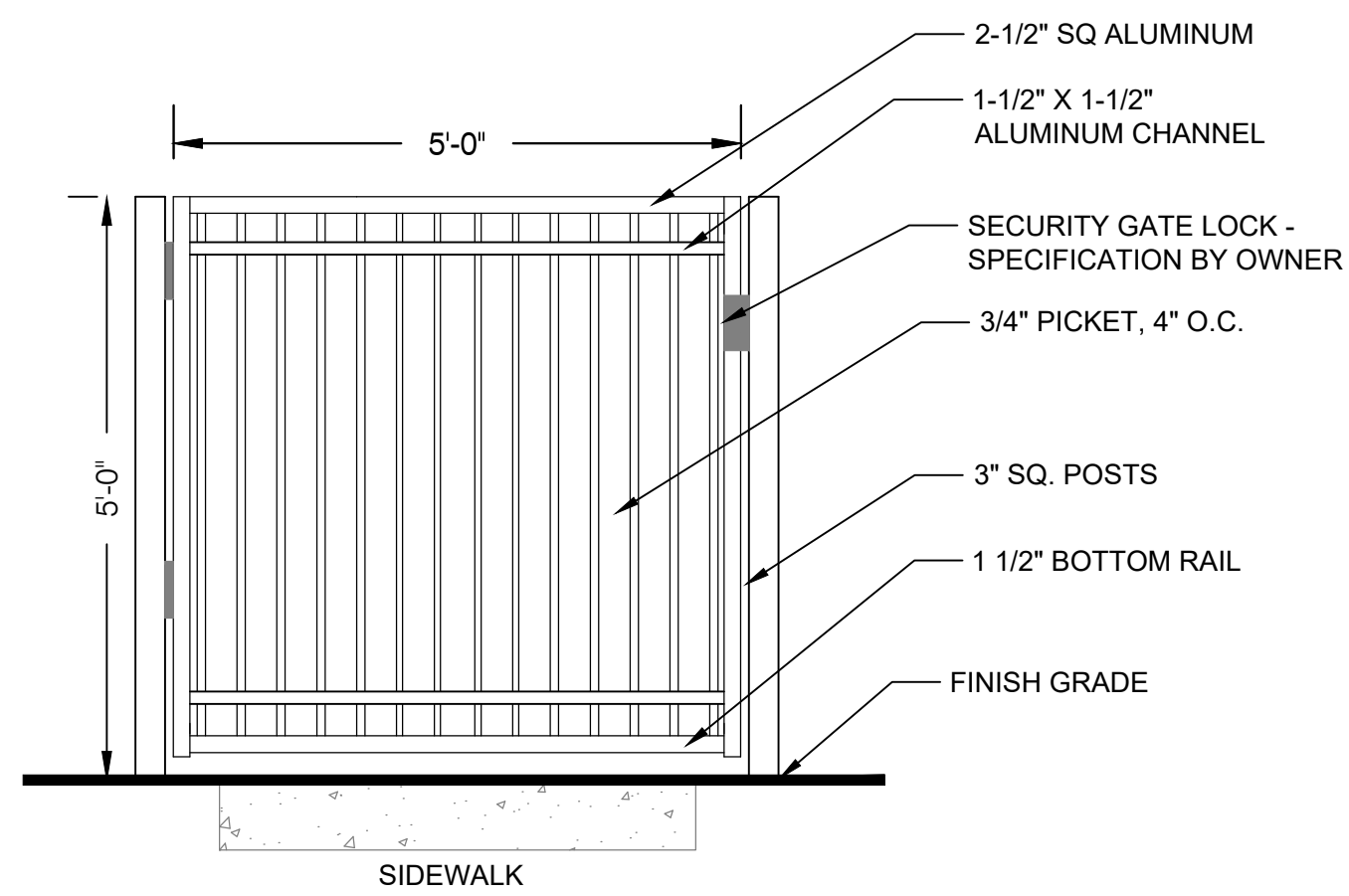
PROJECT NO. 1906
SCALE 1" = 60'
DATE April 2022
SHEET L-108

PLANT SCHEDULE

PLANT SCHEDULE DOG PARK

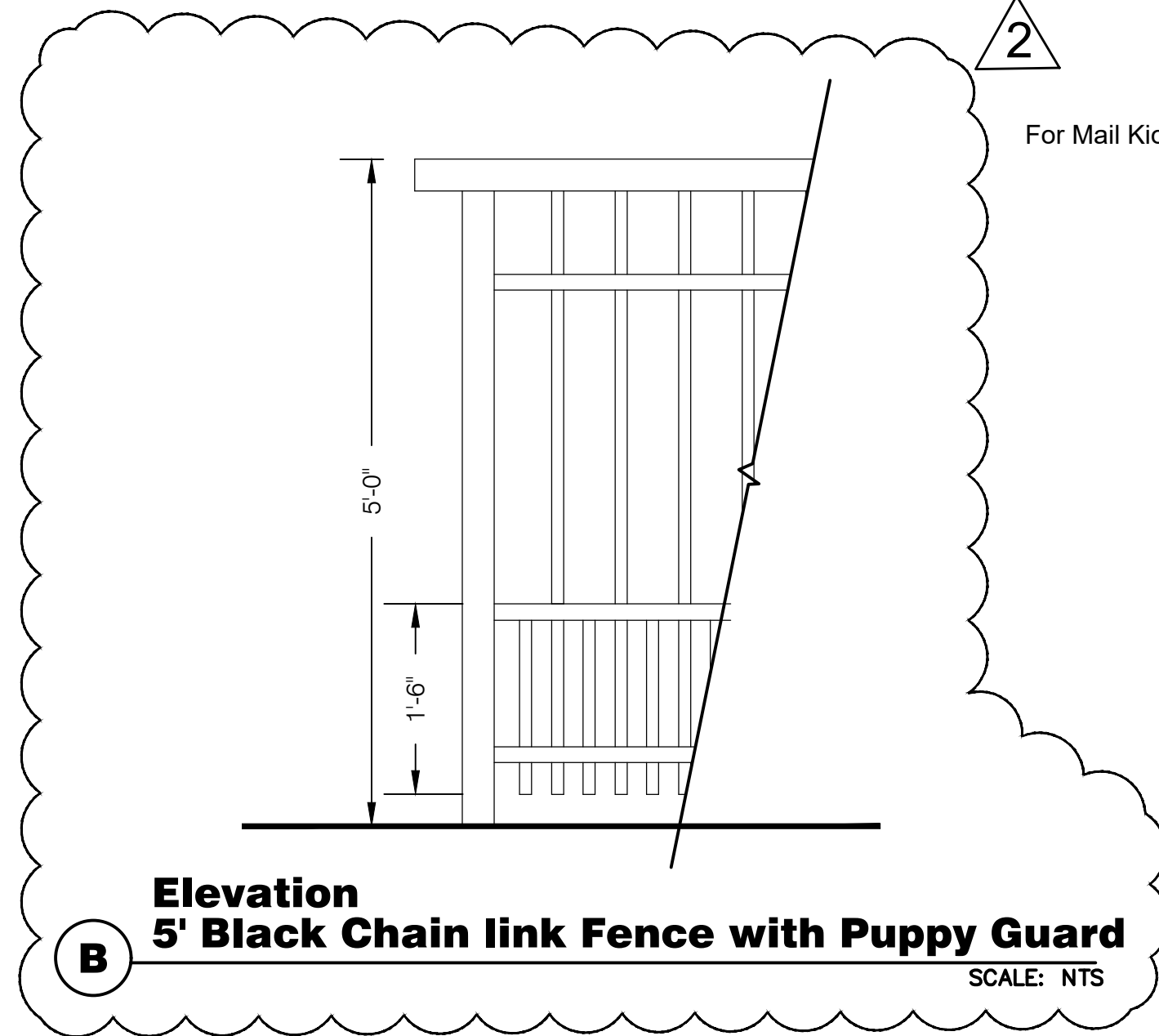
TREES	BOTANICAL NAME	COMMON NAME	QTY	REMARKS
CS	Conocarpus erectus 'Sericeus'	Silver Buttonwood	7	MIN. 30 GAL., 8' HT., FULL HEAD, MATCHED.
JB	Juniperus silicicola 'Brodie'	Brodie Southern Red Cedar	5	Min. 8' HT., MATCHED
LAG	Lagerstroemia indica	Crape Myrtle	7	MIN. 8' HT., STANDARD, MATCHED.
QV	Quercus virginiana	Southern Live Oak	19	MIN. 65 GAL., 14' HT., 3" CAL., MATCHED
TGP	Tibouchina granulosa	Purple Glory Tree	1	MIN. 45 GAL., 8' HT., FULL HEAD
SHRUBS	BOTANICAL NAME	COMMON NAME	QTY	REMARKS
CDE	Crinum augustum 'Queen Emma'	'Queen Emma' Crinum	6	Min. 15 gal., 32" ht., full plant, 36" o.c.
VO	Viburnum odoratissimum	Sweet Viburnum	194	MIN. 7 GAL., 36" HT. X 30" SPD., 36" O.C.
SHRUB AREAS	BOTANICAL NAME	COMMON NAME	QTY	REMARKS
IVN	Ilex vomitoria 'Nana'	Dwarf Yaupon Holly	273	Min. 3 gal., 18" ht. x 18" spd., 24" o.c.
GROUND COVERS	BOTANICAL NAME	COMMON NAME	QTY	REMARKS
MCA	Muhlenbergia capillaris	Pink Muhly Grass	483	MIN. 3 GAL., 24" HT., FULL POT., 24" O.C.
RIA	Rhaphiolepis indica	Indian Hawthorn	208	MIN. 3 GAL., 12" HT. X 12" SPD., 24" O.C.
TAM	Trachelospermum asiaticum	Asian Jasmine	531	MIN. 1 GAL., FULL POT., 12" O.C.
ZF	Zamia floridiana	Coontie	112	MIN. 3 gal., 18" ht., 30" o.c.

2



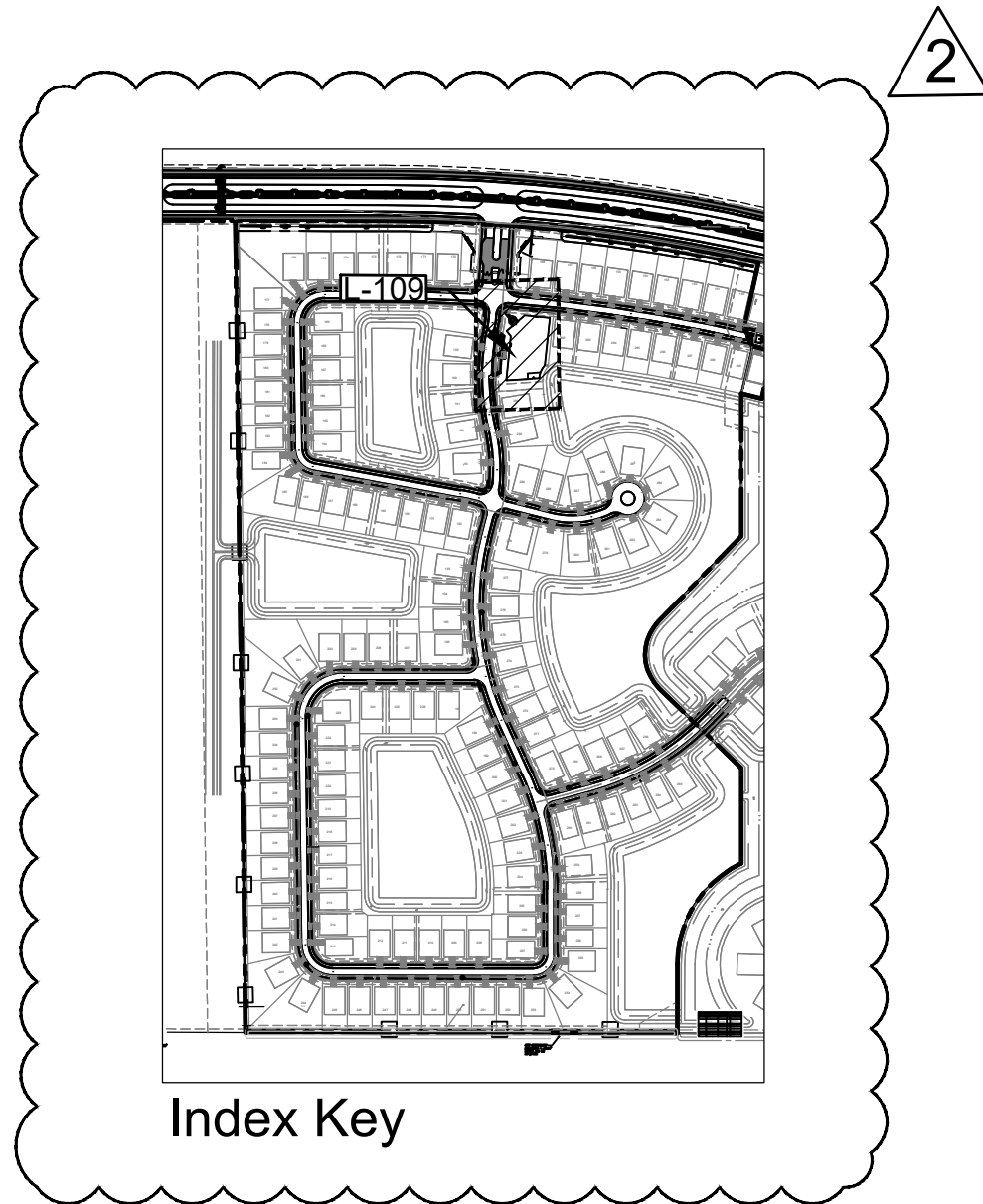
Elevation A
5' Aluminum Gate

SCALE: NTS

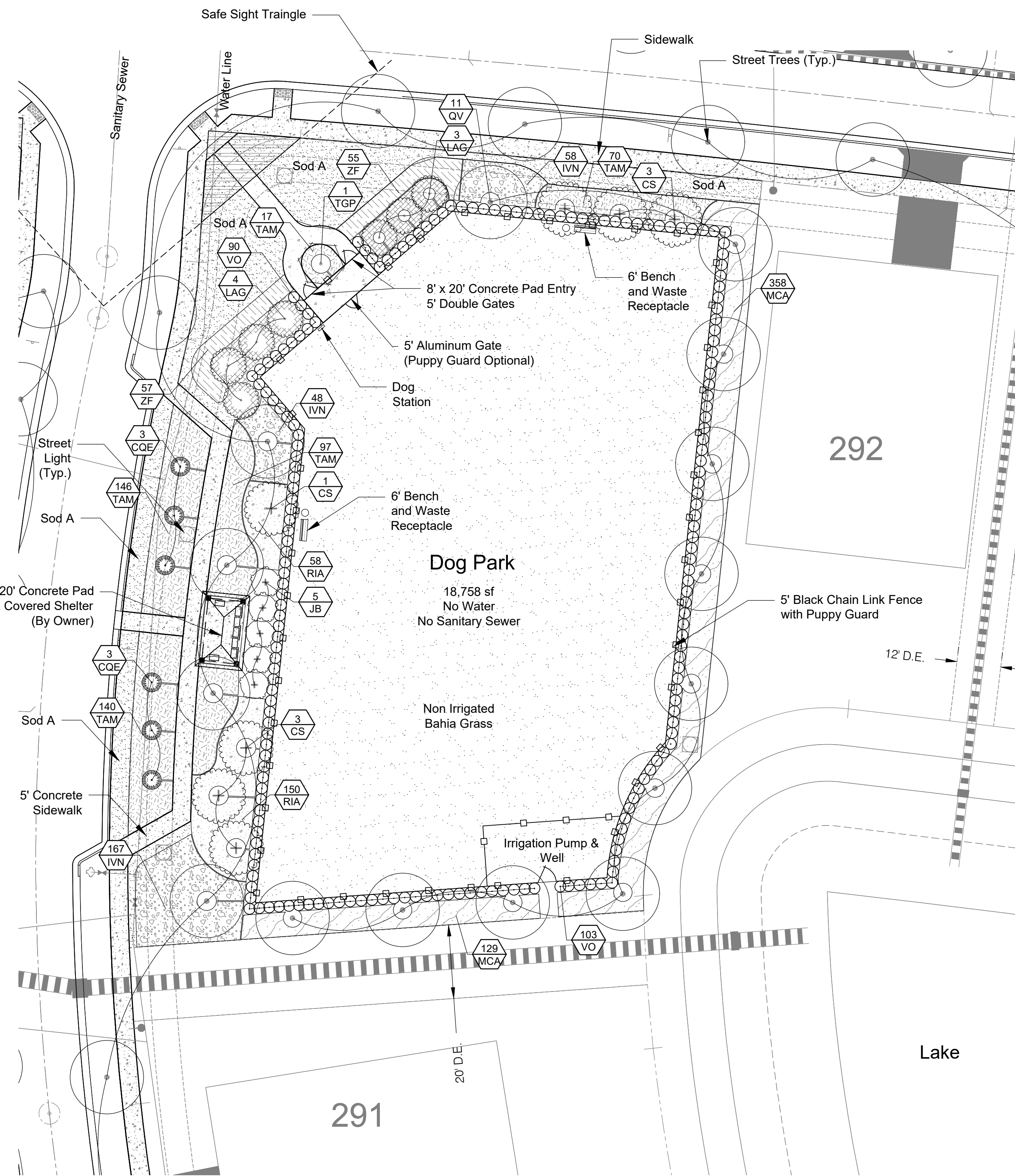


Elevation B
5' Black Chain link Fence with Puppy Guard

SCALE: NTS



2



Revisions

- Mail kiosk & shelter added.
- Dog park reconfigured to accommodate mail kiosk.
- Puppy guard added to gate.

2

daly design group inc.
Urban Planning, Landscape Architecture, Project Management, Development Consulting
913 N Pennsylvania Ave, Winter Park, FL 32789 (407) 740-7373 www.dalydesign.com

REV	DATE	DESCRIPTION	BY
3	02 07 23	Revision Per City Comments.	mb
2	10 25 22	Revision Per City Comments.	mb
1	08 01 22	Revision Per City Comments.	mb

Dog Park
Landscape Construction Plans
Belterra Tradition Phase II
Port St. Lucie, Florida

CITY OF PORT ST. LUCIE PROJECT#
COPSL Project No.: P22-180
PSLUSD File No.: 5336C



PROJECT NO.
1906
SCALE
1" = 20'
DATE
April 2022
SHEET
L-109