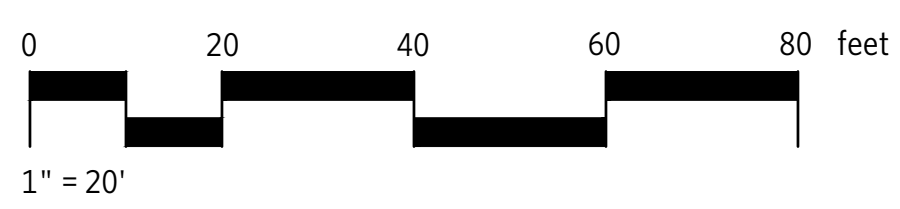
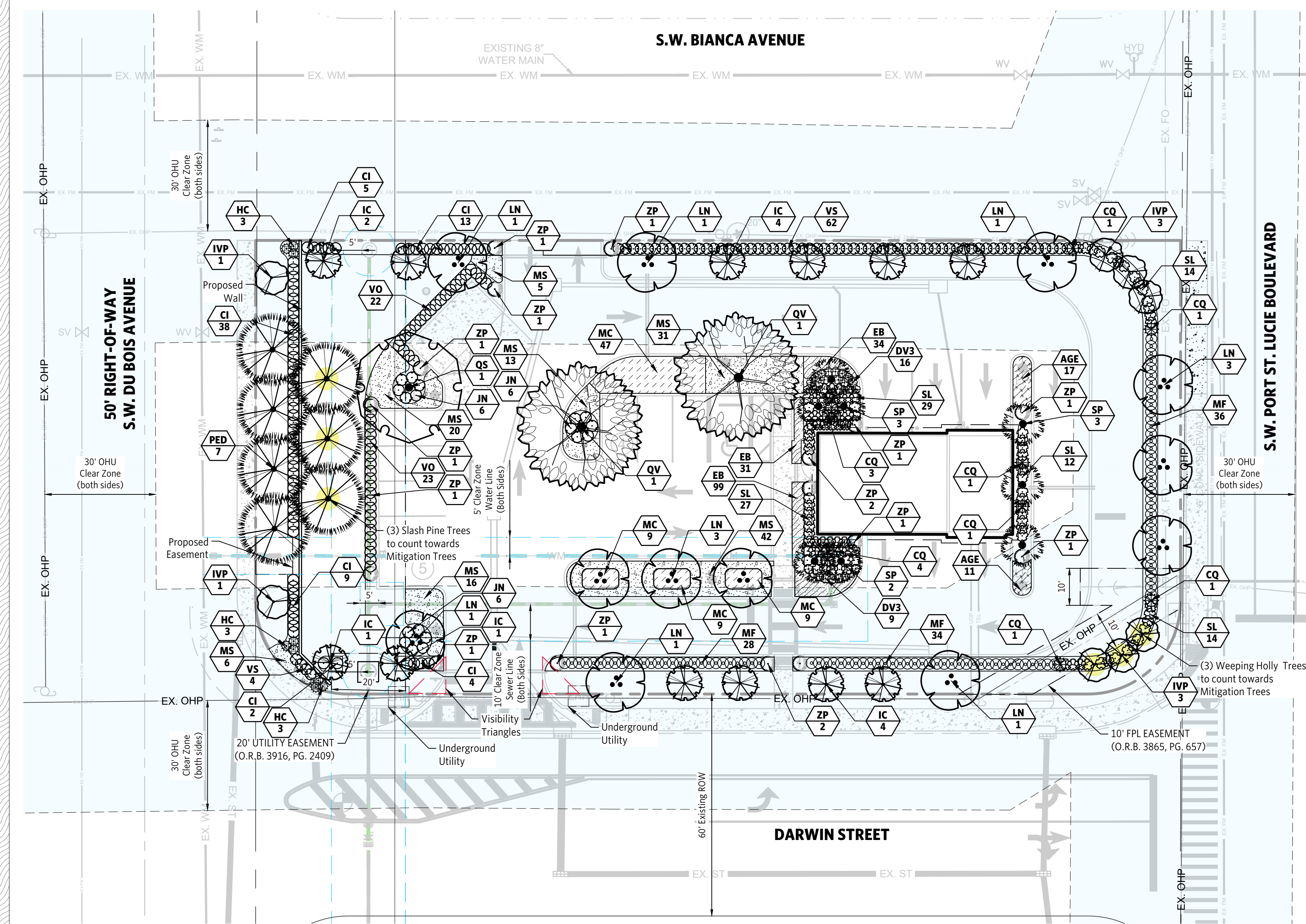


PLANT SCHEDULE

TREES	CODE	QTY	BOTANICAL NAME	COMMON NAME	SIZE	SPREAD	DETAIL	REMARKS
	IC	12	Ilex cassine	Dahoon Holly	3" Cal.	5'		min. 12" h, min. 32" B&B or 45 gal.
	IVP	8	Ilex vomitoria 'Pendula'	Weeping Yaupon Holly	3" Cal.	5'		min. 12" h, min. 32" B&B or 45 gal.
	LN	12	Lagerstroemia x 'Natchez'	Crape Myrtle	3" Cal.	5'		min. 12" h, min. 32" B&B or 45 gal.
	PED	7	Pinus elliotti densa	Southern Slash Pine	3" Cal.	5'		min. 14" h, min. 32" B&B or 45 gal.
	QS	1	Quercus shumardii	Shumard Red Oak	3" Cal.	5'		min. 12" h, min. 32" B&B or 45 gal.
	QV	2	Quercus virginiana	Southern Live Oak	3" Cal.	5'		min. 12" h, min. 32" B&B or 45 gal.
	SP	8	Sabal palmetto	Cabbage Palmetto	---	---		mixed heights, 10' to 20' CT, no less than 4' height differential between adjacent palms

SHRUBS	CODE	QTY	BOTANICAL NAME	COMMON NAME	SIZE	TYPE	DETAIL	REMARKS
	CI	71	Chrysobalanus icaco	Cocoplum	7 gal.	US		min. 48" h, min. 24" spread
	CQ	13	Crinum augustum 'Queen Emma'	Queen Emma Crinum Lily	7 gal.	SS		Florida Fancy, min. 36" h, min. 36" spread, min. 10 perfect leaves, dense
	DV3	25	Diets vegeta	African Iris	1 gal.	GC		min. 12" h, min. 12" spread
	HC	9	Hamelia patens 'Calusa'	Firebush	7 gal.	US		min. 24" h, min. 24" spread
	JN	18	Jasminum nitidum	Star Jasmine	3 gal.	S		min. 12" h, min. 12" spread
	MF	98	Myrcianthes fragrans	Simpson's Stopper	3 gal.	US		min. 24" h, min. 12" spread
	SL	96	Schefflera arboricola 'Emerald Green'	Emerald Green Schefflera	5 gal.	S		min. 24" high by 24" spread, solid green, no variegation
	VO	45	Viburnum obovatum	Walter's Viburnum	7 gal.	US		min. 24" h, min. 12" spread
	VS	66	Viburnum suspensum	Sandankwa Viburnum	3 gal.	US		min. 24" h, min. 12" spread
	ZP	16	Zamia pumila	Coontie	7 gal.	GC		Florida Fancy

GROUND COVERS	CODE	QTY	BOTANICAL NAME	COMMON NAME	SIZE	SPACING	DETAIL
	AGE	28	Arachis glabrata 'Ecoturf'	Perennial Peanut	1 gal.	24" o.c.	12" spread
	EB	164	Evolvulus glomeratus 'Blue Daze'	Brazilian Dwarf Morning Glory	1 gal.	15" o.c.	min. 6" h, min. 12" spread
	MS	133	Mimosa strigillosa	Sensitive Plant	1 gal.	36" o.c.	Full
	MC	74	Muhlenbergia capillaris	Pink Muhly Grass	1 gal.	30" o.c.	min. 15" h, min 15" spread



BUFFER TABLE

Applicable Code Section	Location	Description	Width	Character	Required		Provided		Constraint or Note
					Trees	Shrubs	Trees	Shrubs	
154.03.C.1	North	Professional	10'	1 Tree/ 30' LF, continuous hedge 2' o.c.	9	85	9	85	Existing overhead utilities.
154.03.C.1	South	ROW	10'	1 Tree/ 30' LF, continuous hedge 2' o.c.	8	81	8	77	Existing overhead utilities.
154.03.C.1	East	ROW	15'	1 Tree/ 30' LF, continuous hedge 2' o.c.	6	56	6	58	Existing overhead utilities. Three additional Weeping Hollies are provided towards mitigation trees.
154.03.C.3.d.2	West	ROW	10'	1 Tree/ 30' LF, continuous hedge 2' o.c.	6	56	6	60	Three additional Slash Pines are provided towards mitigation trees.

MINIMUM LANDSCAPE REQUIREMENTS

	Caliper	Height	Spread
Trees	2.5"	12'	5'
Shrubs	n/a	24"	n/a

FERTILIZATION - TREES, SHRUBS & GROUNDCOVERS

ALL PLANTINGS SHALL BE FERTILIZED WITH AGRIFORM 20-10-15 FERTILIZER TABLETS, 2 YEAR FORMULA PLANTING TABLETS AT THE TIME OF INSTALLATION AND PRIOR TO COMPLETION OF BACKFILLING. AGRIFORM TABLETS SHALL BE PLACED UNIFORMLY AROUND THE PLANTING PIT ABOUT 1"-2" AWAY FROM ROOT TIPS. TABLETS SHALL BE PLACED AROUND THE LOWER HALF OF THE PLANTING PIT BUT NOT AT THE BOTTOM.

APPLICATION RATES

1 GALLON CAN PLANTS		3 GALLON CAN PLANTS		5 GALLON CAN PLANTS		7 GALLON CAN PLANTS		LARGE TREES OR B&B TREES		MATURE PALMS		WELL-ROOTED LINERS		SMALL GROUNDCOVERS OR PERENNIALS	
1 TABLET	2 TABLETS	3 TABLETS	4 TABLETS	5 TABLETS FOR EA. 1/2" OF CALIPER	10 TABLETS PER PALM	1 TO 2 TABLETS	1 TO 2 TABLETS	1 TABLET							

AGRIFORM 20-10-15 PLANTING TABLETS AS MANUFACTURED BY: SIERRA CHEMICAL COMPANY, 1001 YOSEMITE DRIVE, MILPITAS, CA 95035

NOTE: LANDSCAPE ARCHITECT MAY MAKE A RANDOM SAMPLING OF PLANT PITS TO DETERMINE THE UNIFORMITY OF APPLICATION.

LANDSCAPE NOTES

- All trees proposed within the of Overhead Utility conflict area have mature height of less than 25'.
- No landscaping shall be planted in a manner that would adversely affect utility easements. Landscaping shall be in compliance with Chapter 153 of the City of Port St. Lucie Code of Ordinances, PSLUSD technical specifications and policies.
- All landscaping within City utility easements shall comply with PSLUSD technical specifications, policies, and codes.
- All landscaping shall meet the latest PSLUSD Landscape Policy and shall not be placed in a manner that would create conflicts with the intended operation and maintenance of any existing utility.
- Trees shall not be planted within ten (10) feet of any PSLUSD underground infrastructure.
- No landscaping other than sod grasses shall be located within 5' of a PSLUSD appurtenance such as a water meter assembly, back flow device, fire hydrant or sewer cleanout, etc.

LANDSCAPE CALCULATIONS

Buffer Trees Required	29	
Buffer Trees Provided	35	
Buffer Shrubs Required	308	
Buffer Shrubs Provided	322	
Building Facade LF	164	
Required Trees: 1Trees/30LF	6	
Provided Trees:	11	
(8) Sabal Palm Provided	8	
(3) Crepe Myrtle Provided	3	
Required Shrubs: 1Shrubs/2LF	82	
Provided Shrubs:	85	
Parking Lot Islands Required	4	
Parking Lot Islands Provided	4	
Island Shade Trees Required	4	
Island Shade Trees Provided	4	
(2) Live oak	2	
(1) Shumard Oak	1	
(1) Crepe Myrtle	1	
Total Trees Required on Site	39	
Total Trees Provided on Site	50	
(6) Mitigation Trees Provided	9"	
(3) PE @ 3" cal, (1.5" mitigation)	4.5"	
(3) IVP @ 3" cal, (1.5" mitigation)	4.5"	
Mitigation trees are highlighted in Yellow. Additional (2) Sabal Palms and (3) Crepe Myrtles are not counted towards mitigation.		
TREE MITIGATION SUMMARY		
Total Trees removed	29	335"
Total Trees provided	6	9"
Total Inches to Tree Preservation Fund:	326"	

LEGEND

- FLORIDA NATIVE
- DROUGHT TOLERANT
- FLOWERING

LANDSCAPE MATERIAL CALCULATIONS

	Quantity
Total Trees Required	39
Required Native Trees	20
Provided Native Trees	27
Required Drought Tolerant Trees	20
Provided Drought Tolerant Trees	39
Required Flowering Trees	8
Provided Flowering Trees	12
Allowed Palm Trees	10
Provided Palm Trees	8
Total Shrubs Required	457
Required Native Shrubs	115
Provided Native Shrubs	239
Required Drought Tolerant Shrubs	229
Provided Drought Tolerant Shrubs	234
Total Groundcovers Required	399
Required Drought Tolerant Groundcovers	200
Provided Drought Tolerant Groundcovers	325
Required Flowering Groundcovers	40
Provided Flowering Groundcovers	399

REVISION 3 CLOUD NOTES

- Retaining wall shifted to the East.
- Dumpster orientation changed.
- Parking bays changed.
- All landscape area have been revised and revision clouds, therefore revision clouds have been omitted for graphic clarity.

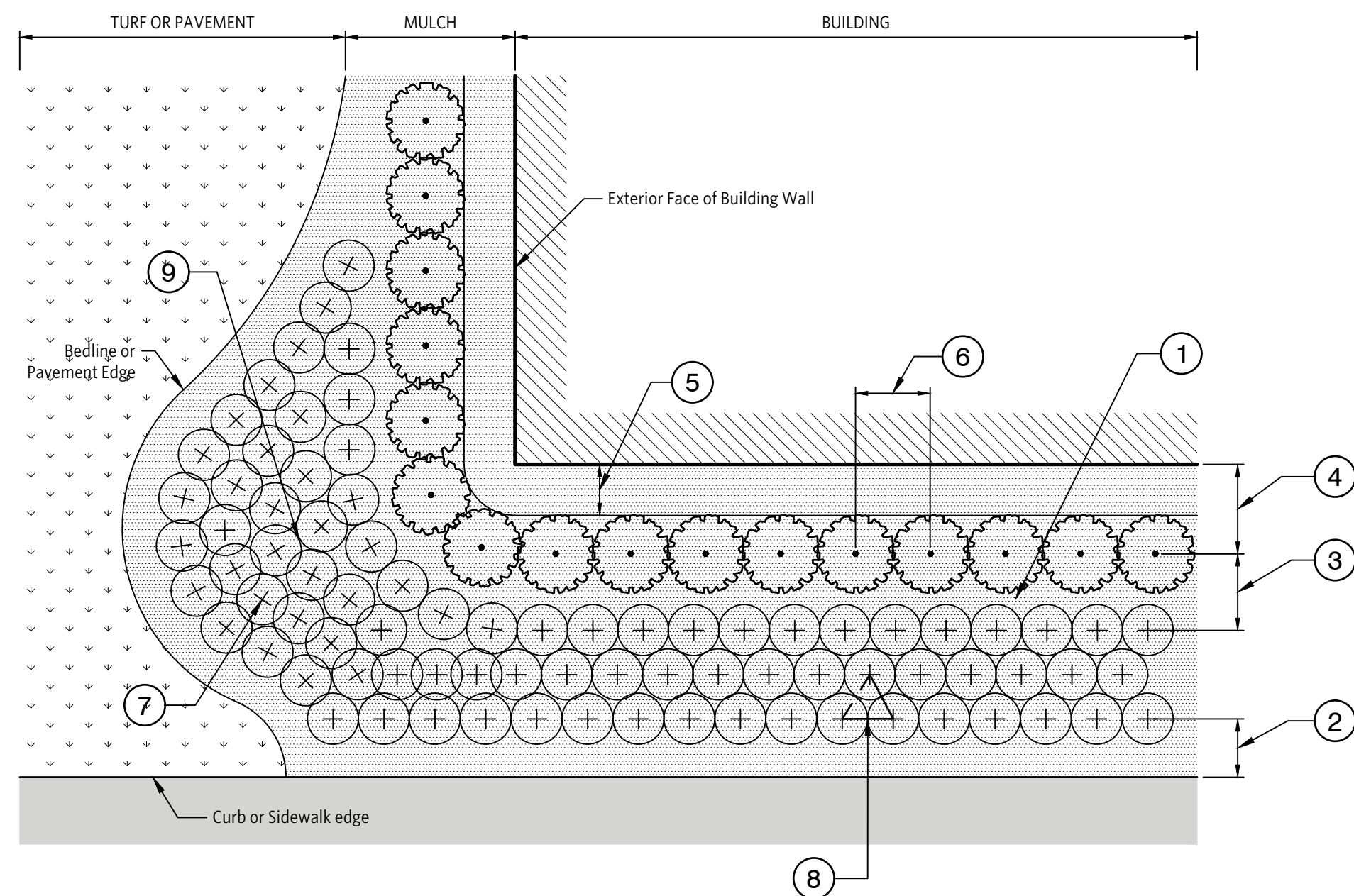
REVISION 4 CLOUD NOTES

- In revision 3 we were asked to provide revision clouds.
- In revision 4 we were asked to remove revision clouds, therefore revision clouds have been removed.



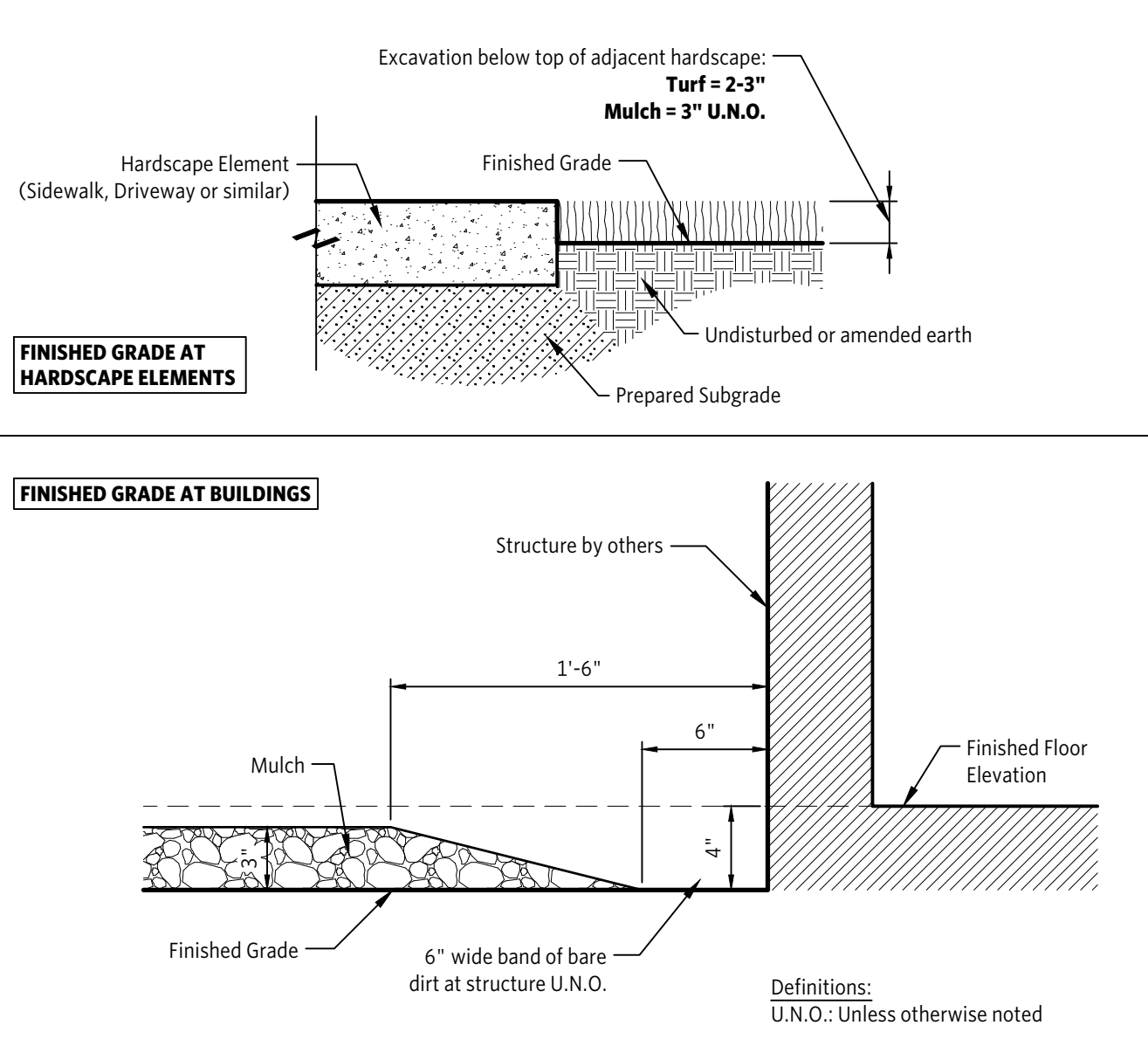
Sheet List Table

Sheet Number	Sheet Title
LA1.0	LANDSCAPE PLAN
LA1.1	LANDSCAPE DETAILS

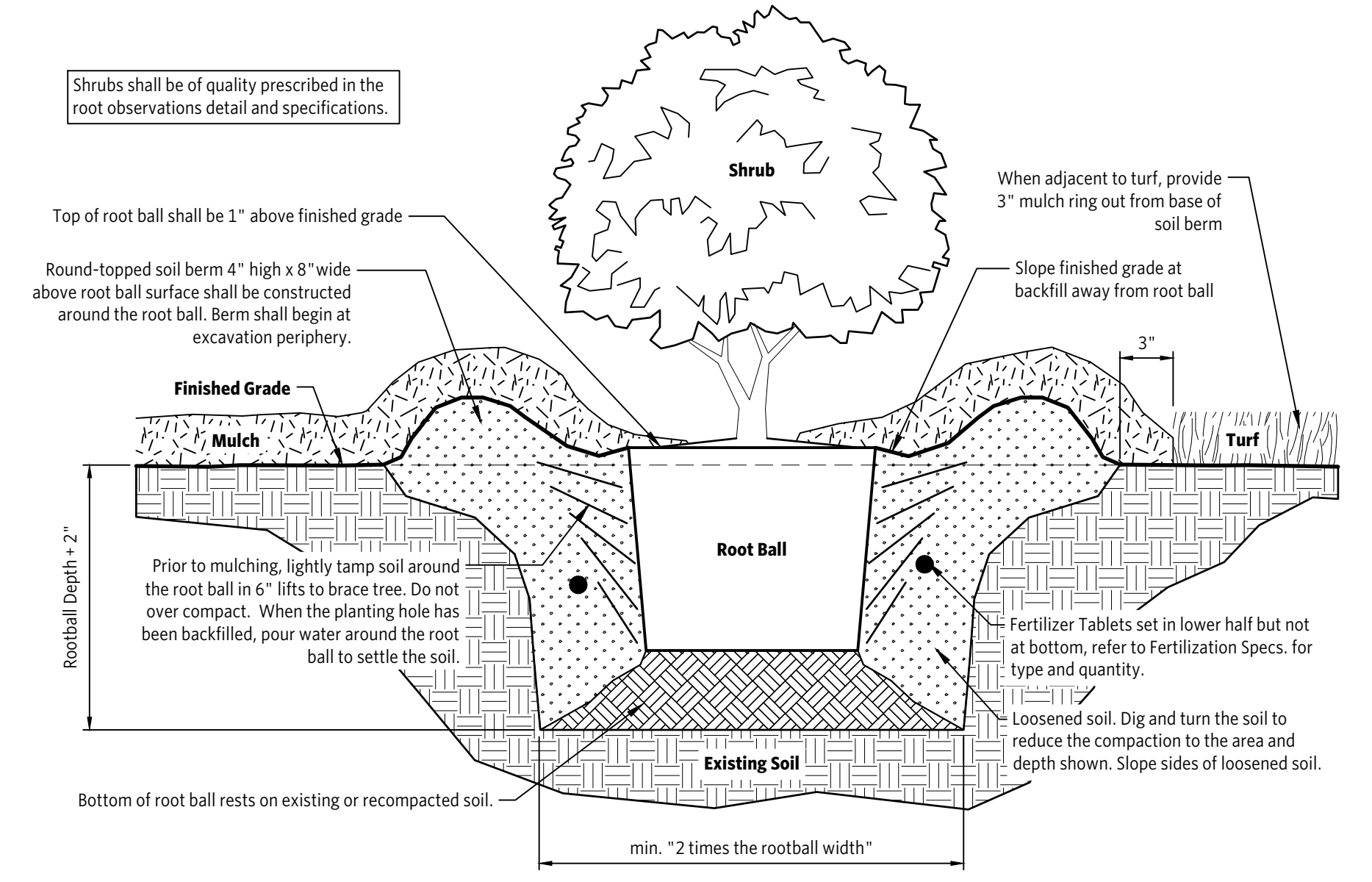
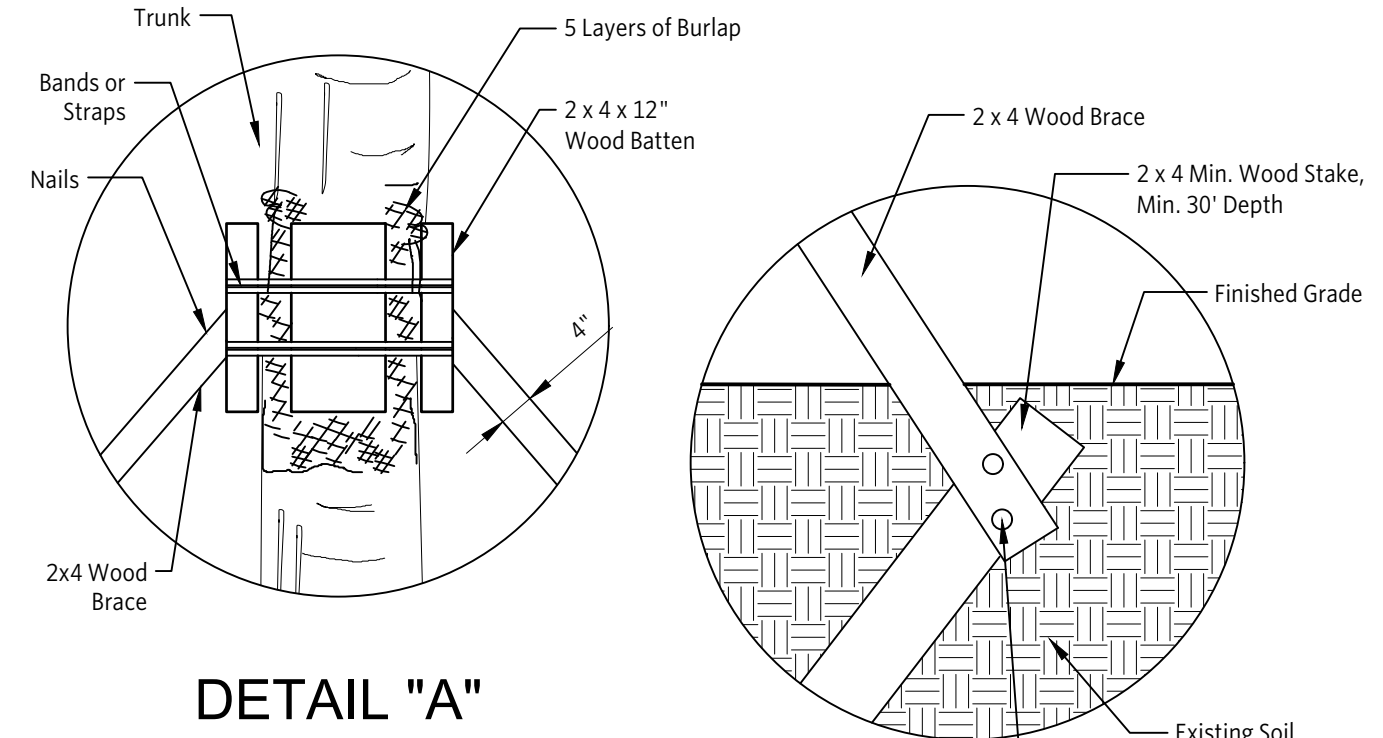


1 PLANT LAYOUT DETAIL
3/16" = 1'-0"
L-01

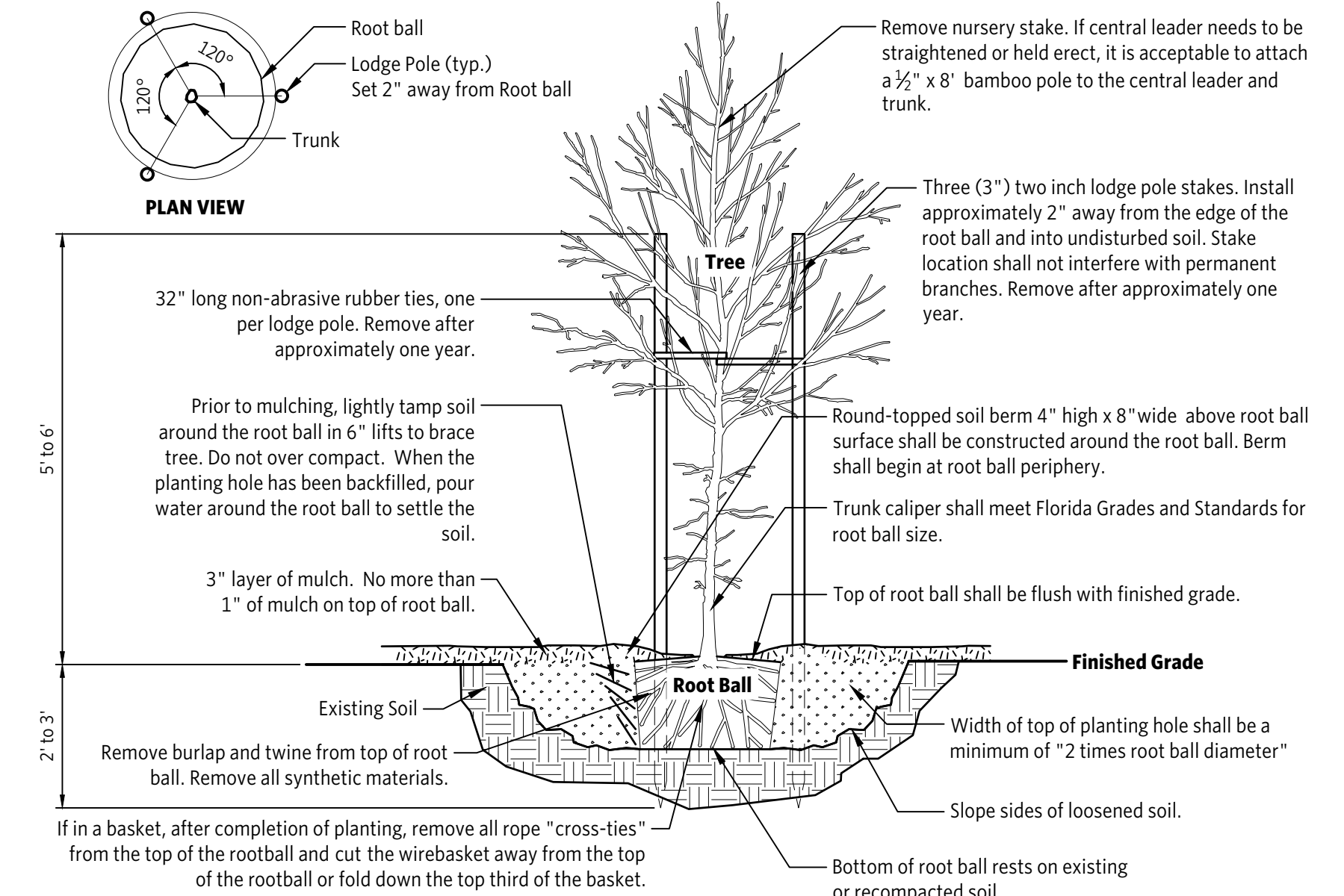
- 1 "Center to Center Spacing" (O.C.) varies for different plant species. Space each variety of plant equally in planting areas unless otherwise noted.
- 2 Distance between the edge of pavement and the centerline of the nearest plant row is 1.5 times the on center spacing of the nearest plant group.
- 3 Distance between plant material types shall be the greater of the two plant spacing distances.
- 4 Distance between the edge of building and the centerline of the nearest plant shall be 2' plus 0.5 times the on center spacing of the plant.
- 5 Maintain an 18" minimum setback from building faces and 12" setback from freestanding wall faces. Increase as necessary to allow for species growth & maintenance access.
- 6 O.C. Spacing (See Plant List)
- 7 Shrubs and groundcover adjacent to curved edges shall be planted in rows parallel to the bedline.
- 8 Shrubs and Groundcovers adjacent to straight edges shall be planted in triangular spacing with rows parallel to the straight edge.
- 9 Maintain O.C. spacing and curvature as much as possible within the center of irregularly shaped massings.



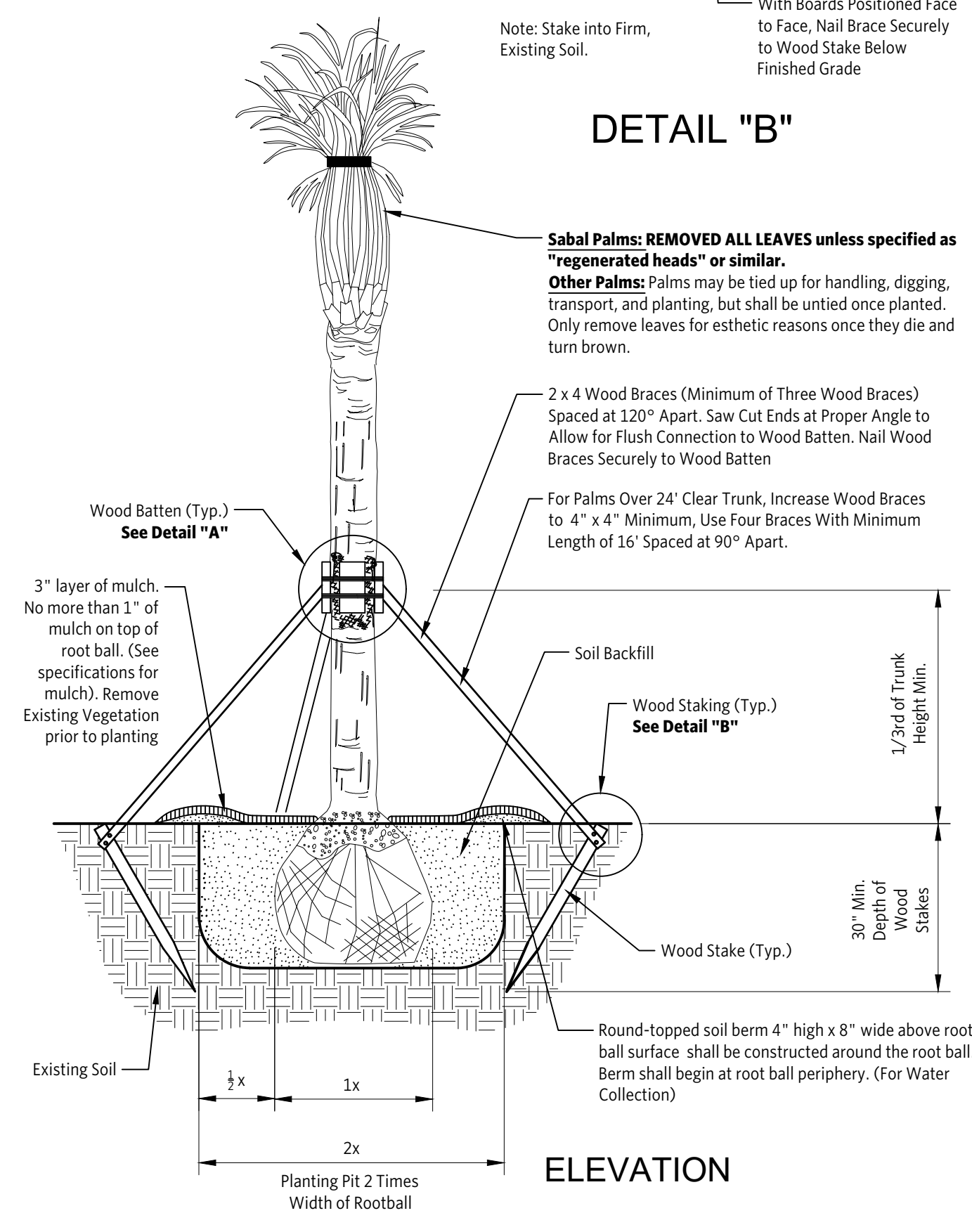
2 LANDSCAPE AND FINISHED GRADE
1 1/2" = 1'-0"
L-17



3 SHRUB PLANTING DETAIL
1 1/2" = 1'-0"
L-18



4 TREE PLANTING DETAIL
1/2" = 1'-0"
L-16



5 PALM PLANTING DETAIL
1/2" = 1'-0"
L-09

LANDSCAPE SPECIFICATIONS

1. All plant material shall be Florida Grade no.1 or better per "Florida Grades and Standards for Nursery Plants 2015", latest revision, Florida Department of Agriculture, Tallahassee, FL.
2. All permits necessary for installation/construction are to be provided by the landscape contractor unless otherwise specifically stated in the landscape plans or notes.
3. Installation of landscape must be coordinated with other subcontractors. The landscape contractor will be responsible for locating underground utilities prior to excavation.
4. The contractor shall notify the landscape architect if any conflicts arise between the proposed design and existing conditions on-site.
5. The contractor is responsible for familiarizing himself with on-site conditions as part of the bidding process. The contractor shall notify the landscape architect prior to award of contract of any on-site conditions that would hinder the normal, healthy growth of plant species proposed on these plans.
6. After the landscape architect may be contacted for assistance in layout of plant material, if needed. All questions regarding plant placement must be resolved prior to commencement of installation.
7. Carefully review the landscape material specifications. All materials must be as specified on the landscape plans. If materials or methods do not adhere to specifications, the landscape architect will reject them.
8. The landscape architect will accept no substitutions of plant material/species without written approval. Contractor shall submit to the landscape architect proof of non-availability and a proposal for the use of equivalent material.
9. Plant material quantities shown on these plans are supplied as an aid to the contractor for bidding purposes. Final quantity takeoffs are the responsibility of the contractor. Notify the landscape architect if any discrepancies exist prior to proceeding with any changes in material quantities.
10. Plant specifications of height, clear trunk, spread and container size shown on the plans are minimum acceptable sizes. All installed material shall meet or exceed the given specifications. The contractor shall submit to the landscape architect proof of non-availability and a proposal for the use of equivalent material.
11. The general contractor is responsible for rough grading the site to within 0.10 ft. of 21. grades shown on these plans. The landscape contractor is responsible for finish grades in all landscape areas. All proposed contours shown on the landscape plans are to be graded to a maximum slope of 3H:1V.
12. Planting beds shall be treated with a US EPA approved pre-emergent herbicide prior to installation of plant material. Contractor shall follow manufacturer's specifications for application rates, etc.
13. Shrub beds shall be mulched with a 3" layer of mini pine bark mulch unless adjacent existing beds have a minimum of 1" layer of differing mulch material, in which case the existing mulch material shall be matched.
14. Planting pits shall be amended and backfilled with a mixture of one part good quality peat or composted fines, and one part native soil or approved equal. All annual beds shall be filled to a depth of 10" with an approved soil mix. Contractor shall submit samples for approval. Contractor shall also place an appropriate quantity of "agriform" slow release fertilizer tablets into each plant pit.
15. The contractor is responsible for appropriate watering and maintenance of all plant material during the installation phase. Any dead or deficient plant material will be replaced prior to final acceptance by the owner.
16. The contractor shall warranty all workmanship and materials per contractual requirements.
17. The contractor shall verify that the soil is free of excess clay, debris and trash and has a pH level suitable for optimal growing conditions prior to implementation of the proposed plan.
18. All landscape bids shall provide unit price breakdowns for plants and supplemental materials.
19. All landscaped areas shall either be mulched or sodded in accordance with local municipal or jurisdictional regulations.

- After completion of planting, the contractor shall remove all rope "cross-ties" from the top of the rootball and cut the wirebasket away from the top of the rootball.
- Sod shall be planted as quickly as possible after delivery, but if there are delays, store the sod in a cool, shady place until ready to plant. (Sod life on pallets during summer is less than 48 hours.) The area to be planted shall be properly prepared (e.g., tilled and raked smooth) prior to sod delivery and shall be moistened at the time of laying sod. Sod pieces shall be fitted together as tightly as possible, but the sod should not be stretched to fit an area. If cracks are evident between pieces, they shall be filled with cut up pieces of sod. Lay the sod in a staggered brick pattern so that the seams are offset between sod pieces. Tamp or roll the sod to remove air pockets and ensure good soil contact. Make sure the roots have good contact with the underlying soil so that it does not dry out during establishment. Keep the grass moist for the first 7 days after planting with brief spritzes of water 2-3 times during the day.

Project No. P21-031

PSLUSD #11-985-00

dark moss
DESIGNING THE URBAN FOREST
3881 7th Ave. Tampa, Florida 33602
813-532-2440 info@darkmoss.com darkmoss.com
All Rights Reserved

PROJECT: **TAKE 5 PORT ST. LUCIE**
LOCATION: **PORT ST. LUCIE, FLORIDA**

PREPARED FOR:
HIGH POINT
ENGINEERING, INC

PUBLISHED: 2021-11-19
PHASE:
PERMIT PLAN

SHEET TITLE:
LANDSCAPE
DETAILS

REVISION:
1 PER STAFF 2021-07-22
2 PER STAFF 2021-09-02
3 PER STAFF 2021-10-29
4 PER STAFF 2021-11-19

SHEET NUMBER:
LA1.1