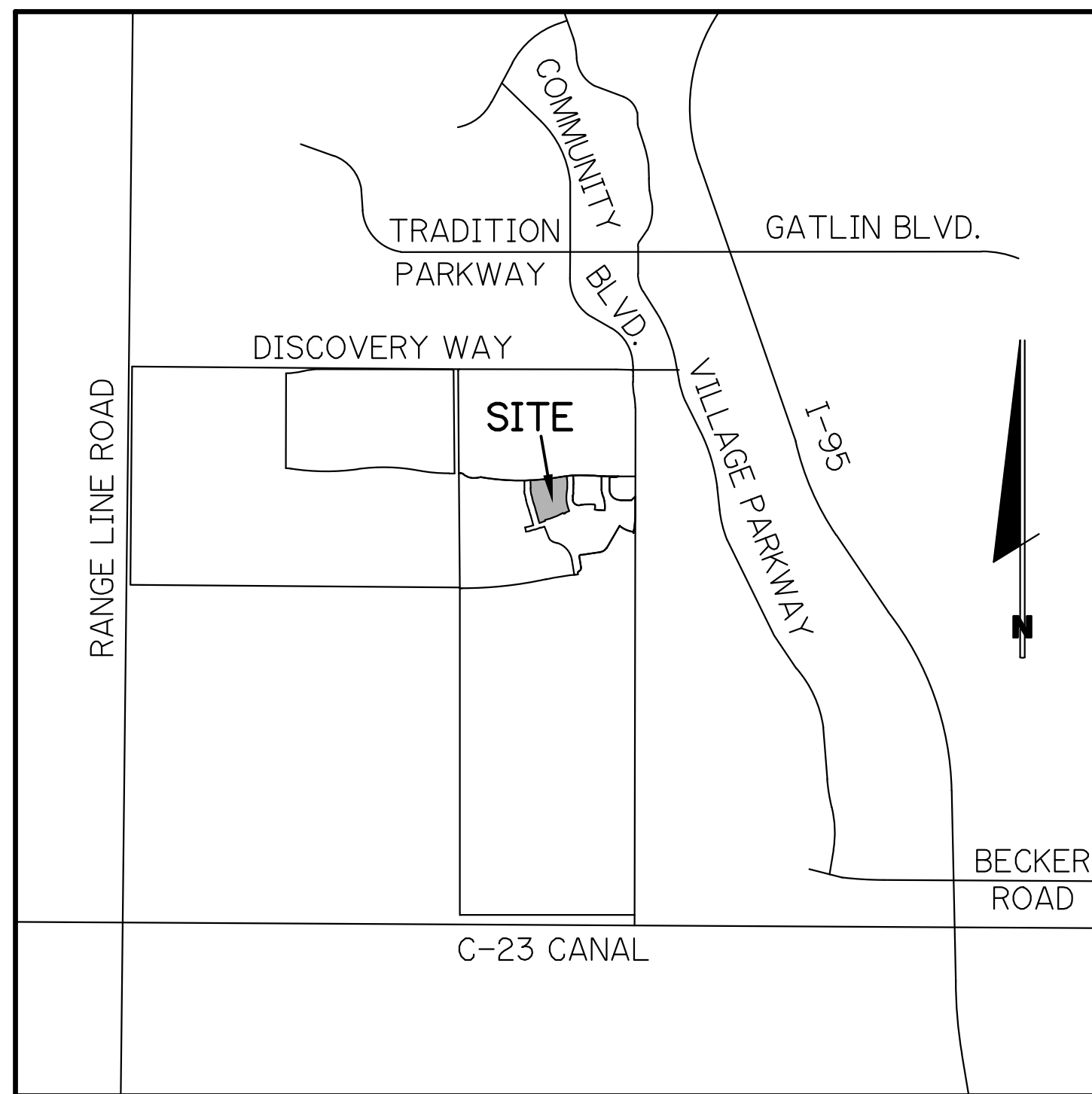


WATER AND SEWER IMPROVEMENTS
FOR
RIVERLAND — PARCEL B
PLAT THREE
CITY OF PORT ST. LUCIE, ST. LUCIE COUNTY, FLORIDA

LAST REVISED: 9/8/2021
RIV-B PL 3 WS

DEVELOPER: **RIVERLAND ASSOCIATES II, LLLP**
1600 SAWGRASS CORPORATE PARKWAY, SUITE 400
SUNRISE, FLORIDA 33323
(954) 753-1730



LOCATION MAP
N.T.S.
SEC. 21 TWP. 37 S RGE. 39 E

PREPARED BY:
GLH ENGINEERING, LLC
1600 SAWGRASS CORPORATE
PARKWAY, SUITE 400
SUNRISE, FLORIDA 33323
PHONE: (954) 753-1730
FL CERTIFICATE OF AUTHORIZATION NO. 27459

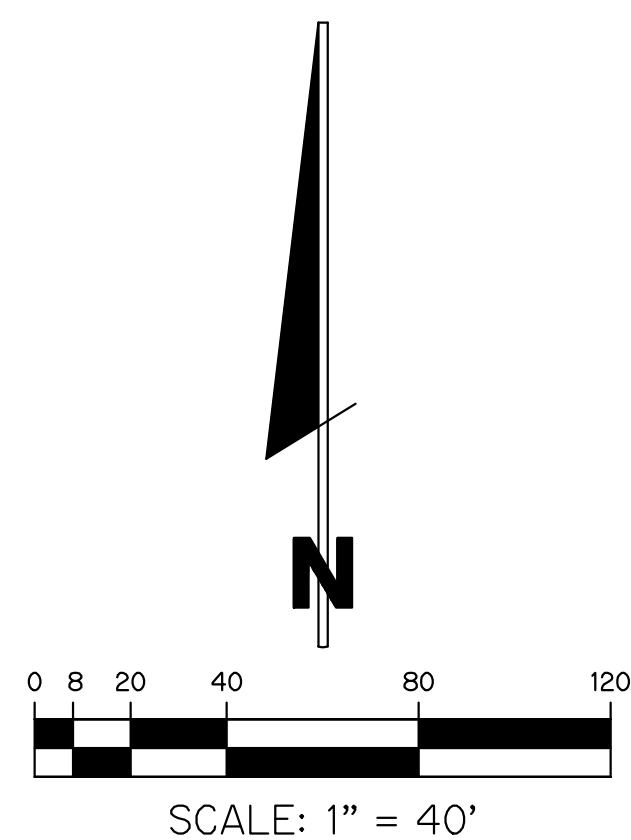
INDEX OF SHEETS

SHEET No.	DESCRIPTION
1	COVER SHEET
2-7	WATER AND SEWER PLANS
8	OVERALL WATER SAMPLE POINT MAP
9	SEWER PROFILES

NOTE: ALL CONSTRUCTION SHALL BE IN ACCORDANCE WITH THE CITY OF PORT ST. LUCIE UTILITY SYSTEMS DEPARTMENT (PSLUSD) UTILITY STANDARDS MANUAL, 2019 EDITION AS WELL AS THE PSLUSD UTILITY STANDARD DETAILS, 2019 EDITION. A COPY OF THE 2019 EDITION OF THE PSLUSD UTILITY STANDARDS MANUAL AND UTILITY STANDARD DETAILS SHALL BE AVAILABLE ON-SITE AT ALL TIMES UTILITY RELATED WORK IS BEING PERFORMED.

NOTE: ALL GRADES SHOWN ARE IN NAVD88
P21-106 (PSLUSD 5266D)

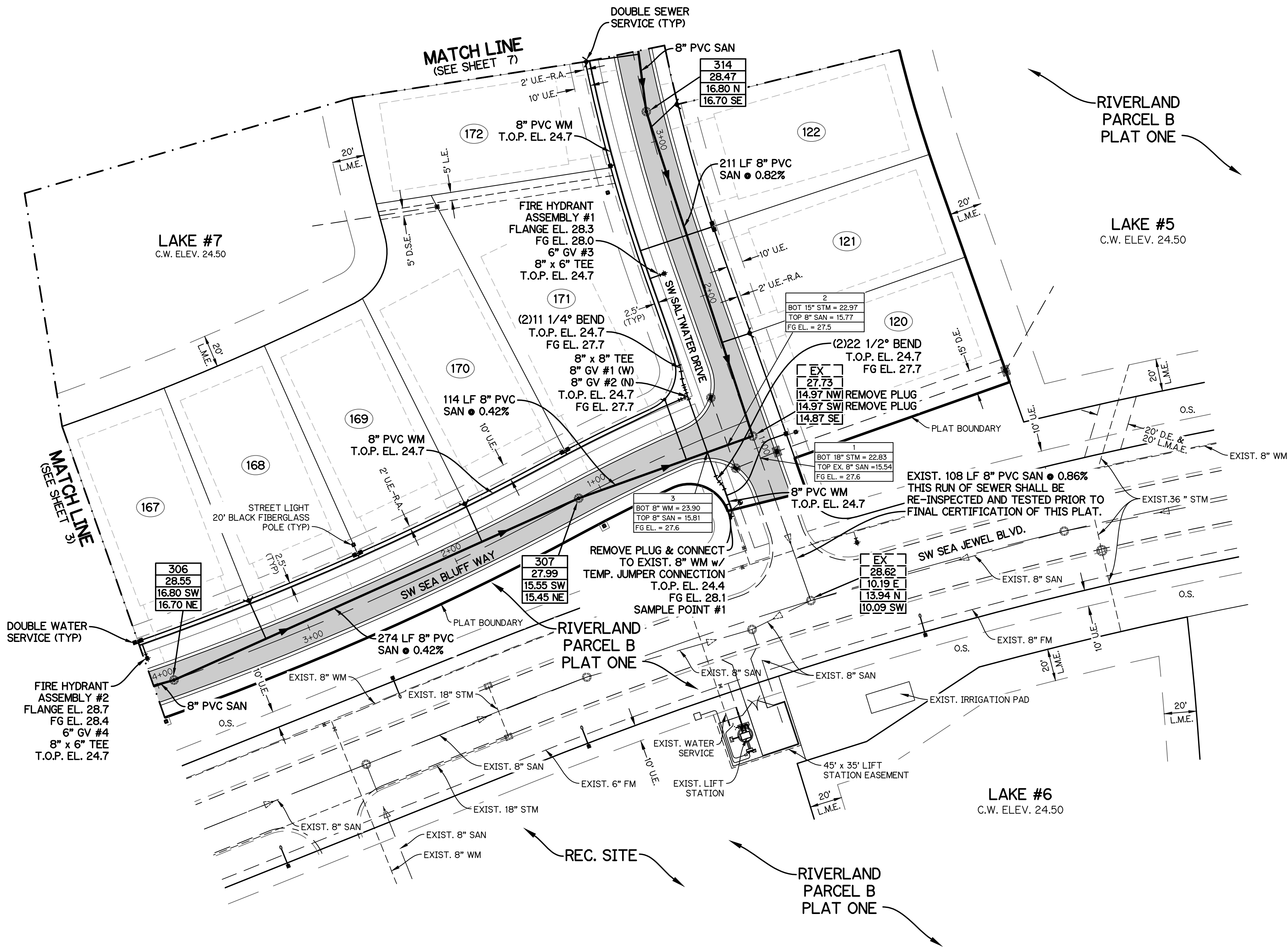
	DATE
	REVISION NO.
BRIAN ARNOLD, P.E. FLORIDA P.E. #81294	
RIV-B PL 3	WS
SHEET 1 OF 9	



- NOTES:**
1. ALL CONSTRUCTION SHALL BE IN ACCORDANCE WITH THE CITY OF PORT ST. LUCIE UTILITY SYSTEMS DEPARTMENT (PSLUSD) UTILITY STANDARDS MANUAL, 2019 EDITION AS WELL AS THE PSLUSD UTILITY STANDARD DETAILS, 2019 EDITION. A COPY OF THE 2019 EDITION OF THE PSLUSD UTILITY STANDARDS MANUAL AND UTILITY STANDARD DETAILS SHALL BE AVAILABLE ON-SITE AT ALL TIMES UTILITY RELATED WORK IS BEING PERFORMED.
 2. PRIOR TO CONSTRUCTION IT IS THE RESPONSIBILITY OF THE CONTRACTOR TO FIELD VERIFY (ELEVATION AND LOCATION) ALL EXISTING UTILITIES. ANY DISCREPANCIES SHALL BE BROUGHT TO THE ATTENTION OF THE ENGINEER PRIOR TO CONTINUATION OF WORK.
 3. THERE SHALL BE NO FIELD CHANGES OR DEVIATIONS FROM DESIGN WITHOUT PRIOR WRITTEN APPROVAL OF THE PSLUSD AND ENGINEER OF RECORD.
 4. ELEVATIONS - ALL ELEVATIONS REFER TO NORTH AMERICAN VERTICAL DATUM OF 1988 (NAVD88).
 5. ALL WATER AND WASTE WATER PRESSURE MAINS SHALL BE PVC, C-900, DR18 (PRESSURE CLASS 235).
 6. ALL GRAVITY SEWER PIPE, FITTINGS AND SERVICE LINES SHALL BE PVC, SDR 26 AND, AS A MINIMUM, CONFORM TO ASTM D-3034.
 7. VALVES SHALL NOT BE PLACED IN CURBS, GUTTERS, SIDEWALKS, PARKING SPACES AND HANDICAP RAMPS. WHERE CONCRETE VALVE PADS TO BE OWNED BY PSLUSD ARE ADJACENT TO SIDEWALKS, THE PADS SHALL BE POURED AS PART OF THE SIDEWALK POUR WITH NO JOINTS.

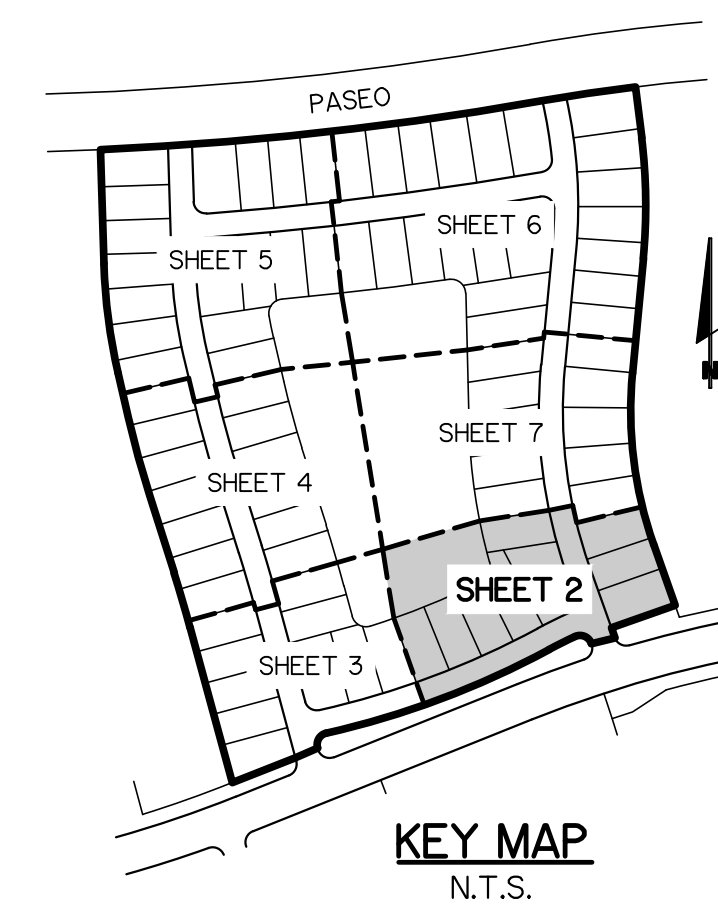
LEGEND

WATER MAIN WITH VALVE, SINGLE WATER SERVICE, DOUBLE WATER SERVICE AND FIRE HYDRANT		BUFFER EASEMENT	B.E.
SANITARY SEWER MAIN WITH SINGLE SEWER SERVICE, DOUBLE WATER SERVICE, MANHOLE, CALLOUT AND FLOW DIRECTION		DRAINAGE EASEMENT	D.E.
STORM SEWER WITH CATCH BASIN		ELEVATION	E.L.
BACTERIOLOGICAL SAMPLE POINT		FINISHED GRADE	FG
STREET LIGHTS		FIRE HYDRANT	F.H.
PAVEMENT TO BE CONSTRUCTED WITH REQUIRED IMPROVEMENTS		FORCE MAIN	FM
LOT NUMBER		GATE VALVE	GV
		INVERT	INV.
		LANDSCAPE EASEMENT	L.E.
		LAKE MAINTENANCE EASEMENT	L.M.A.E.
		LAKE MAINTENANCE EASEMENT	L.M.E.
		MANHOLE	MH
		OPEN SPACE	O.S.
		POINT OF SERVICE	P.O.S.
		CITY OF PORT ST. LUCIE UTILITY EASEMENT	P.S.L.U.E.
		CITY OF PORT ST. LUCIE UTILITY SYSTEMS DEPARTMENT	PSLUSD
		SANITARY SEWER	SAN
		TOP OF PIPE	T.O.P.
		UTILITY EASEMENT	U.E.
		UTILITY EASEMENT - RESTRICTED AREA (SEE "U.E." PLAT DEDICATION)	U.E.-R.A.
		WATER MAIN	WM



WATER AND SANITARY SERVICES		
LOT No.	TYPE	AS-BUILT COORDINATE
120	SWS	-
120/121	DSS	-
121/122	DWS	-
122/123	DSS	-
166/167	DWS	-
167/168	DSS	-
168/169	DWS	-
169/170	DSS	-
170/171	DWS	-
171	SSS	-
172	SWS	-
172/173	DSS	-

SWS = SINGLE WATER SERVICE, DWS = DOUBLE WATER SERVICE
 SSS = SINGLE SEWER SERVICE, DSS = DOUBLE SEWER SERVICE



WATER AND SEWER PLAN FOR RIVERLAND-PARCEL B PLAT THREE

REVISIONS	DATE	BY	CK

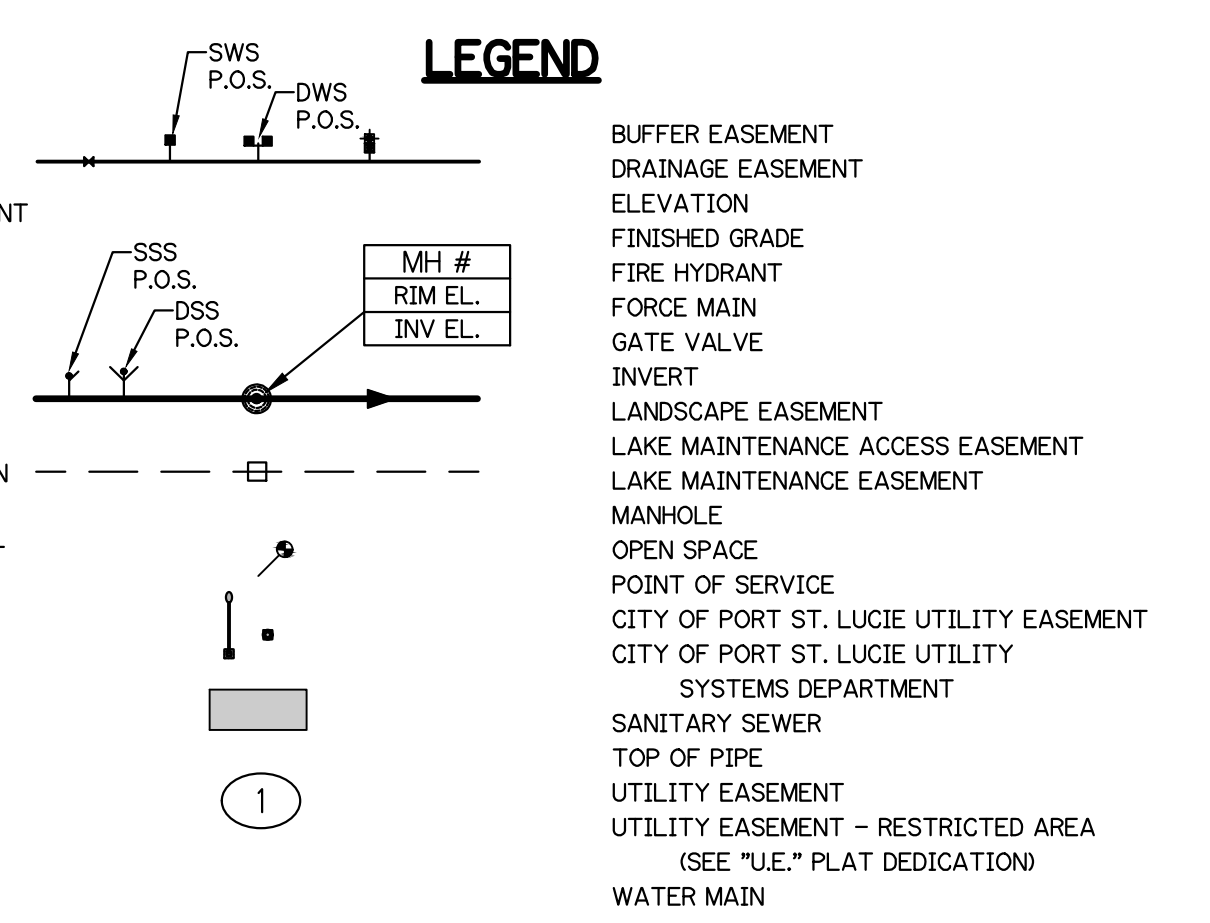
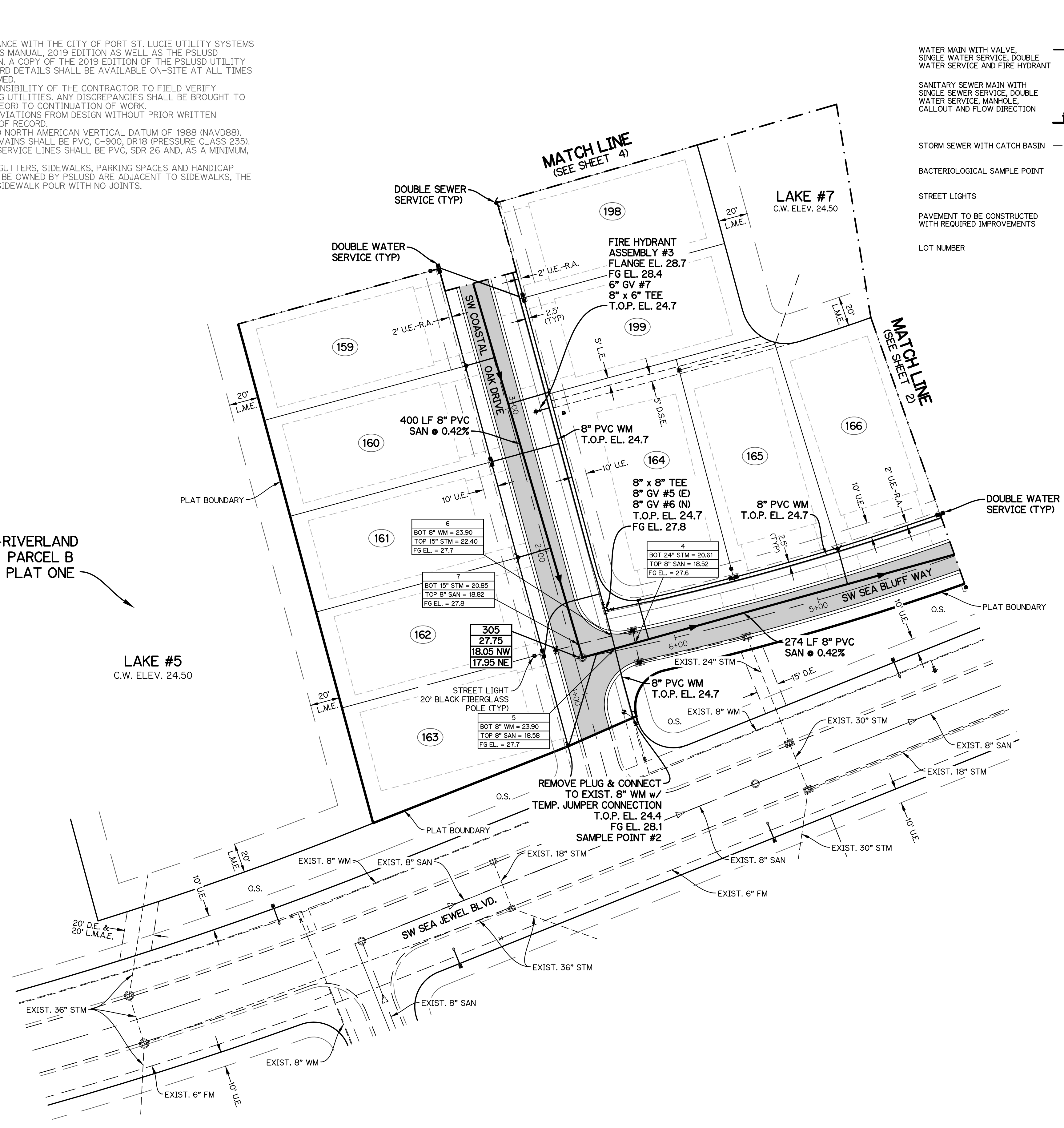
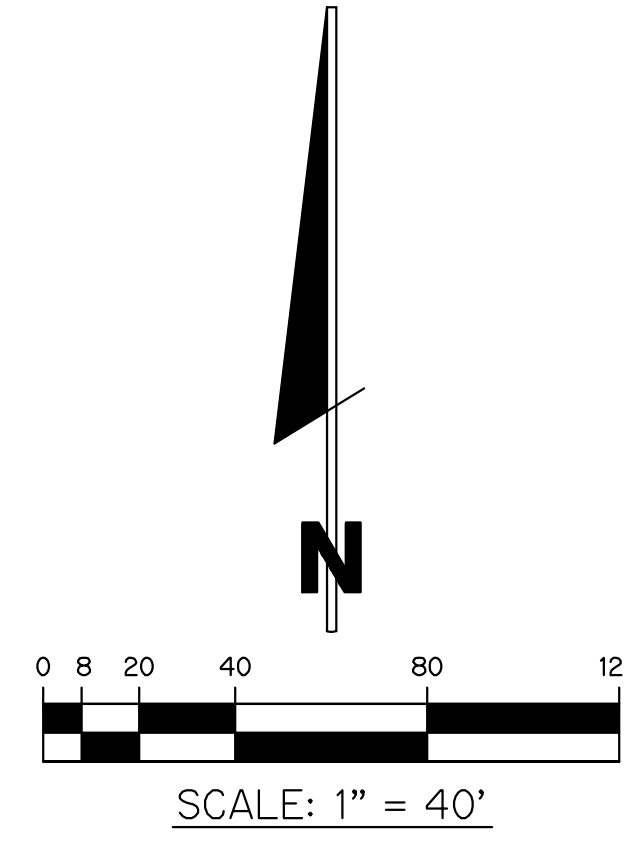
GLH ENGINEERING, LLC
 1600 SAWGRASS CORPORATE PARKWAY, SUITE 400
 SUNRISE, FLORIDA 33323
 PHONE: (954) 753-1730

SCALE: 1"=40'
 DATE: 9/8/21
 DESIGNED BY: AQC
 CHECKED BY: BA
 FILE NAME: RIV-B PL 3 WS

BRIAN ARNOLD, P.E.
 FLORIDA P.E. #81294

NOTE: ALL GRADES SHOWN ARE IN NAVD88
 P21-106 (PSLUSD 5266D)

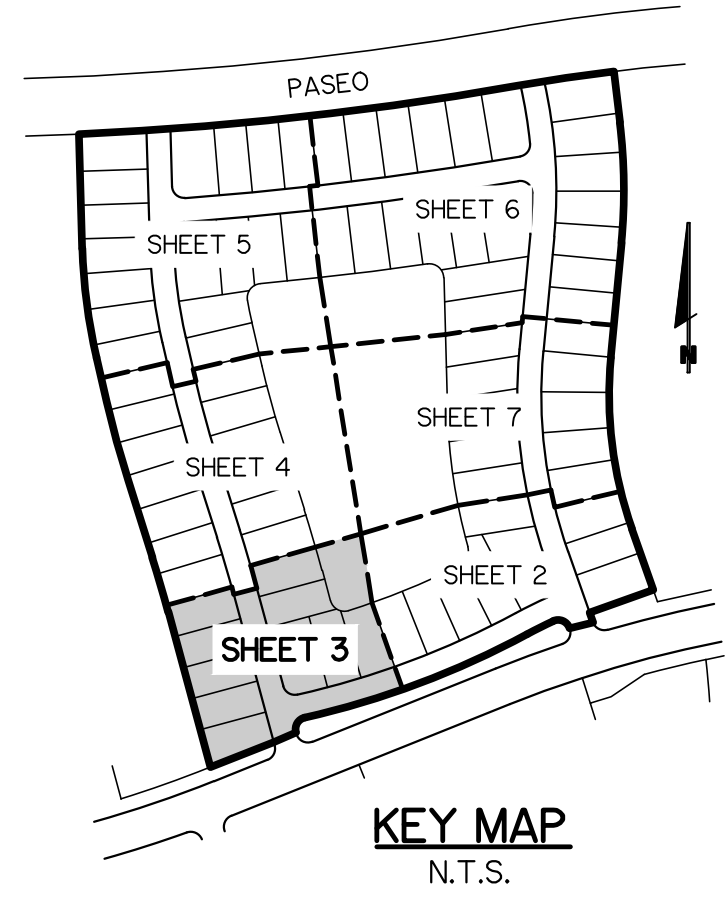
- NOTES:**
1. ALL CONSTRUCTION SHALL BE IN ACCORDANCE WITH THE CITY OF PORT ST. LUCIE UTILITY SYSTEMS DEPARTMENT (PSLUSD) UTILITY STANDARDS MANUAL, 2019 EDITION AS WELL AS THE PSLUSD UTILITY STANDARD DETAILS, 2019 EDITION. A COPY OF THE 2019 EDITION OF THE PSLUSD UTILITY STANDARDS MANUAL AND UTILITY STANDARD DETAILS SHALL BE AVAILABLE ON-SITE AT ALL TIMES UTILITY RELATED WORK IS BEING PERFORMED.
 2. PRIOR TO CONSTRUCTION IT IS THE RESPONSIBILITY OF THE CONTRACTOR TO FIELD VERIFY (ELEVATION AND LOCATION) ALL EXISTING UTILITIES. ANY DISCREPANCIES SHALL BE BROUGHT TO THE ATTENTION OF THE ENGINEER PRIOR (EOR) TO CONTINUATION OF WORK.
 3. THERE SHALL BE NO FIELD CHANGES OR DEVIATIONS FROM DESIGN WITHOUT PRIOR WRITTEN APPROVAL OF THE PSLUSD AND ENGINEER OF RECORD.
 4. ELEVATIONS - ALL ELEVATIONS REFER TO NORTH AMERICAN VERTICAL DATUM OF 1988 (NAVD88).
 5. ALL WATER AND WASTEWATER PRESSURE MAINS SHALL BE PVC, C-900, DR18 (PRESSURE CLASS 235).
 6. ALL GRAVITY SEWER PIPE, FITTINGS AND SERVICE LINES SHALL BE PVC, SDR 26 AND, AS A MINIMUM, CONFORM TO ASTM D-3034.
 7. VALVES SHALL NOT BE PLACED IN CURBS, GUTTERS, SIDEWALKS, PARKING SPACES AND HANDICAP RAMPS. WHERE CONCRETE VALVE PADS TO BE OWNED BY PSLUSD ARE ADJACENT TO SIDEWALKS, THE PADS SHALL BE POURED AS PART OF THE SIDEWALK POUR WITH NO JOINTS.



WATER AND SANITARY SERVICES

LOT No.	TYPE	AS-BUILT COORDINATE
158/159	DWS	-
159/160	DSS	-
160/161	DWS	-
161/162	DSS	-
162/163	DWS	-
163	SSS	-
164	SSS	-
164/165	DWS	-
165/166	DSS	-
166/167	DWS	-
197/198	DSS	-
198/199	DWS	-
199	SSS	-

SWS = SINGLE WATER SERVICE, DWS = DOUBLE WATER SERVICE
 SSS = SINGLE SEWER SERVICE, DSS = DOUBLE SEWER SERVICE



WATER AND SEWER PLAN FOR RIVERLAND-PARCEL B PLAT THREE

REVISIONS	DATE	BY	CHK

GLH ENGINEERING, LLC
 1600 SAWGRASS CORPORATE PARKWAY, SUITE 400
 SUNRISE, FLORIDA 33323
 PHONE: (954) 753-1730

SCALE: 1"=40'
 DATE: 9/8/21
 DESIGNED BY: AQC
 CHECKED BY: BA
 FILE NAME: RIV-B PL 3 WS

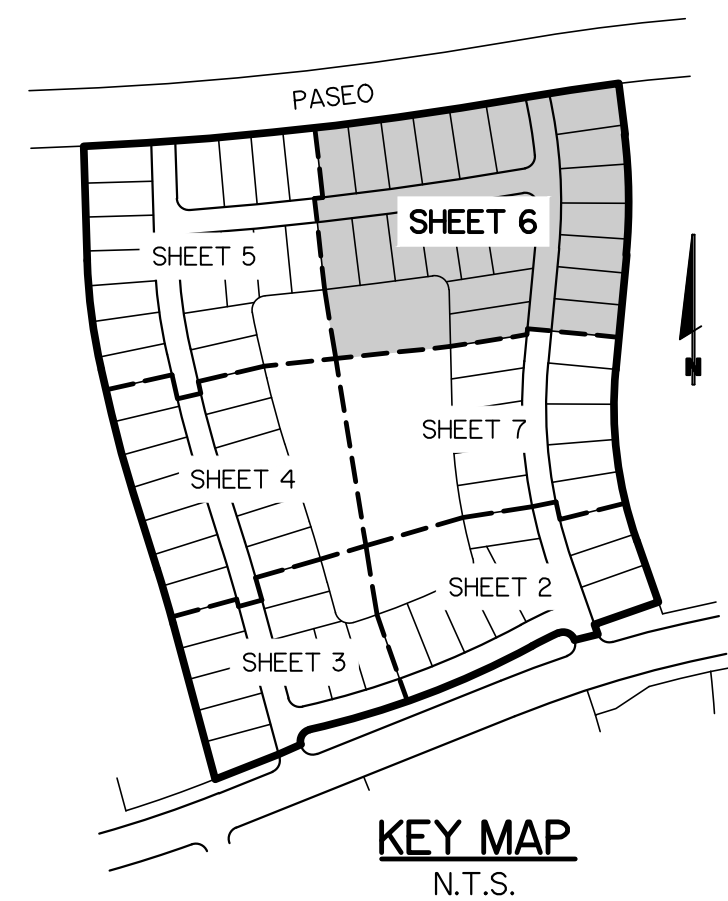
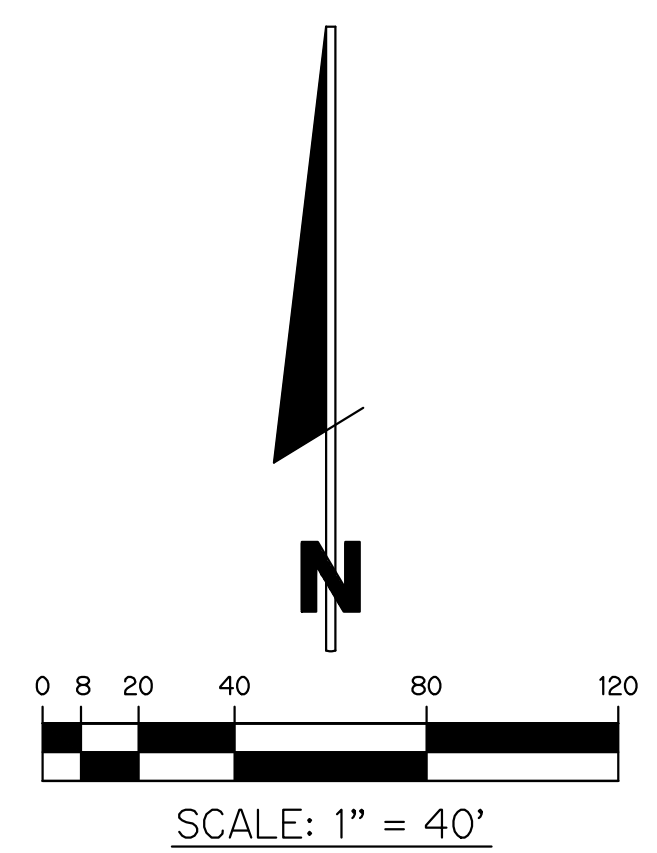
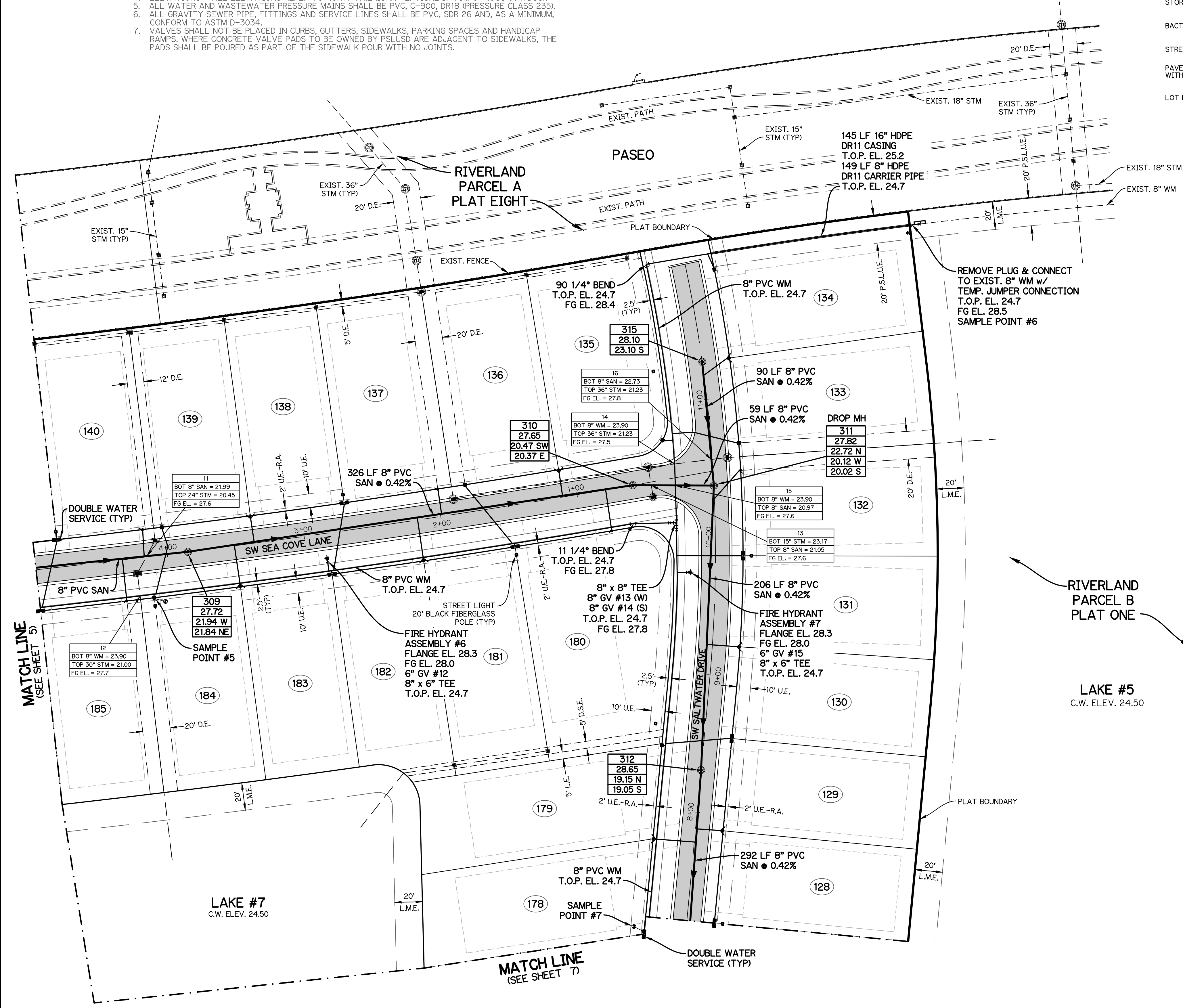
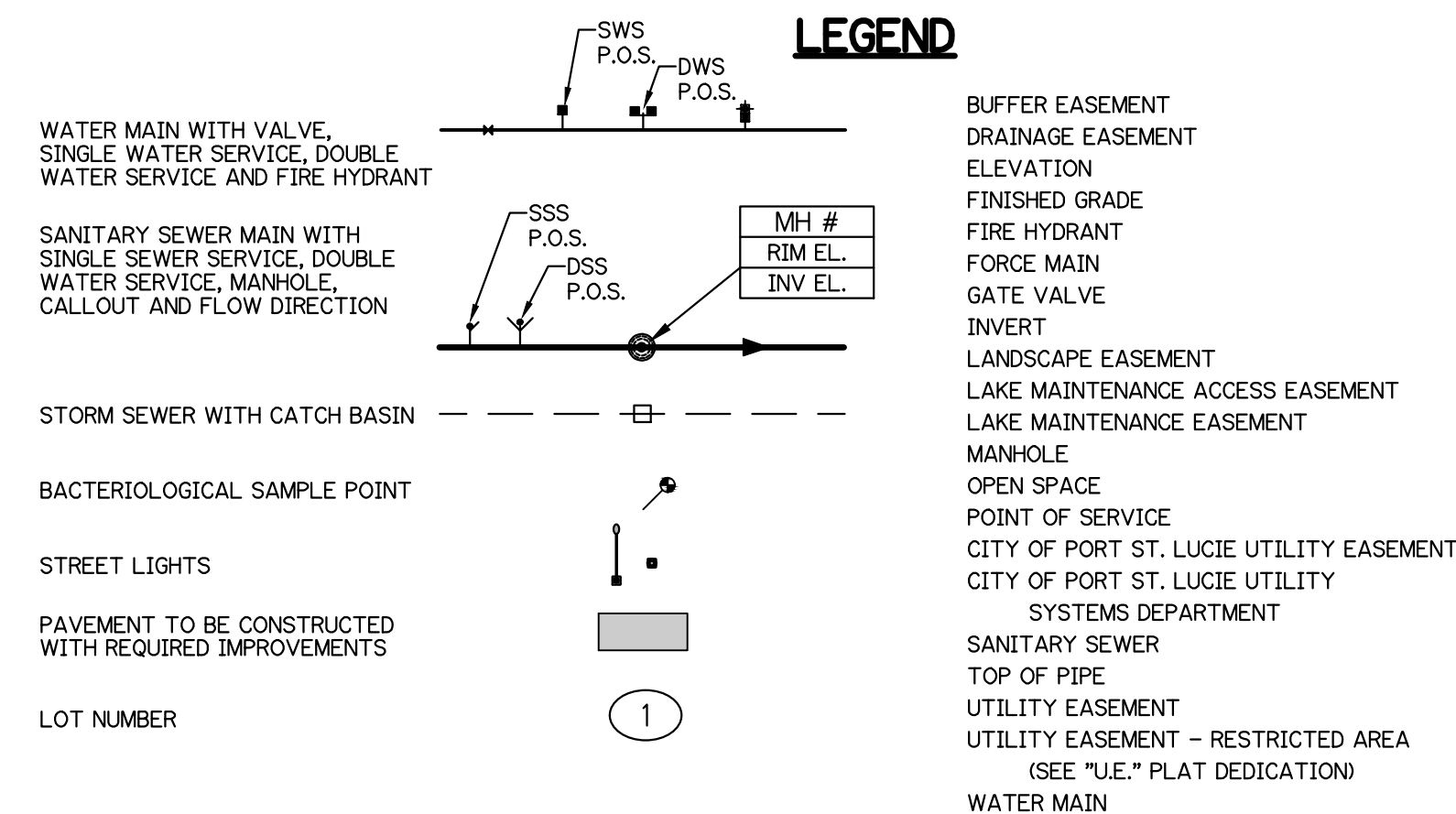
BRIAN ARNOLD, P.E.
 FLORIDA P.E. #81294

RIV-B PL 3 WS

SHEET 3 OF 9

NOTE: ALL GRADES SHOWN ARE IN NAVD88
P21-106 (PSLUSD 5266D)

- NOTES:**
- ALL CONSTRUCTION SHALL BE IN ACCORDANCE WITH THE CITY OF PORT ST. LUCIE UTILITY SYSTEMS DEPARTMENT (PSLUSD) UTILITY STANDARDS MANUAL, 2019 EDITION AS WELL AS THE PSLUSD UTILITY STANDARD DETAILS, 2019 EDITION. A COPY OF THE 2019 EDITION OF THE PSLUSD UTILITY STANDARDS MANUAL AND UTILITY STANDARD DETAILS SHALL BE AVAILABLE ON-SITE AT ALL TIMES UTILITY RELATED WORK IS BEING PERFORMED.
 - PRIOR TO CONSTRUCTION IT IS THE RESPONSIBILITY OF THE CONTRACTOR TO FIELD VERIFY (ELEVATION AND LOCATION) ALL EXISTING UTILITIES. ANY DISCREPANCIES SHALL BE BROUGHT TO THE ATTENTION OF THE ENGINEER PRIOR (EOR) TO CONTINUATION OF WORK.
 - THERE SHALL BE NO FIELD CHANGES OR DEVIATIONS FROM DESIGN WITHOUT PRIOR WRITTEN APPROVAL OF THE PSLUSD AND ENGINEER OF RECORD.
 - ELEVATIONS - ALL ELEVATIONS REFER TO NORTH AMERICAN VERTICAL DATUM OF 1988 (NAVD88).
 - ALL WATER AND WASTEWATER PRESSURE MAINS SHALL BE PVC, C-900, DR18 (PRESSURE CLASS 235).
 - ALL GRAVITY SEWER PIPE, FITTINGS AND SERVICE LINES SHALL BE PVC, SDR 26 AND, AS A MINIMUM, CONFORM TO ASTM D-3034.
 - VALVES SHALL NOT BE PLACED IN CURBS, GUTTERS, SIDEWALKS, PARKING SPACES AND HANDICAP RAMPS. WHERE CONCRETE VALVE PADS TO BE OWNED BY PSLUSD ARE ADJACENT TO SIDEWALKS, THE PADS SHALL BE POURED AS PART OF THE SIDEWALK POUR WITH NO JOINTS.



NOTE: ALL GRADES SHOWN ARE IN NAVD88
P21-106 (PSLUSD 5266D)

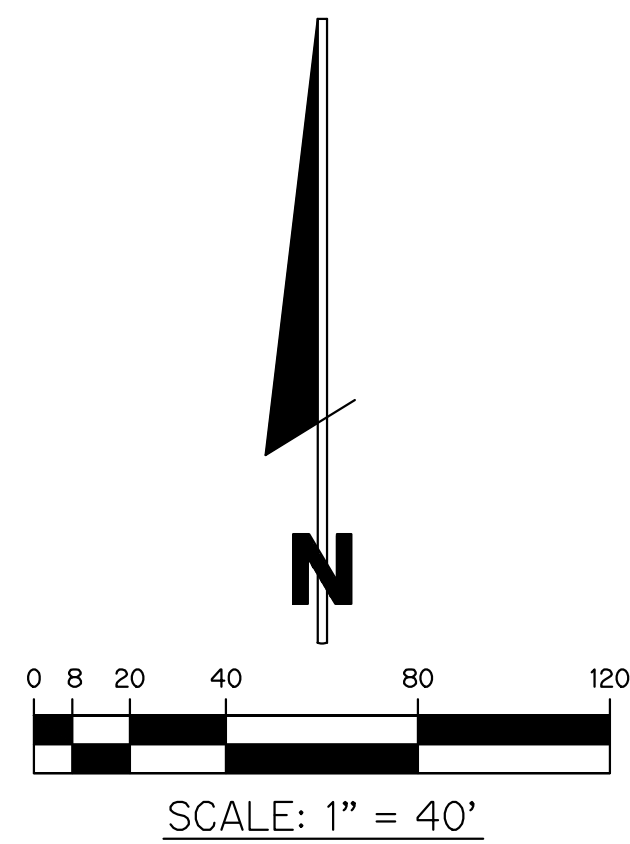
WATER AND SEWER PLAN FOR RIVERLAND-PARCEL B PLAT THREE

GLH ENGINEERING, LLC
1600 SAWGRASS CORPORATE PARKWAY, SUITE 400
SUNRISE, FLORIDA 33323
PHONE: (954) 753-1730

SCALE: 1"=40'
DATE: 9/8/21
DESIGNED BY: AQC
CHECKED BY: BA
FILE NAME: RIV-B PL 3 WS

BRIAN ARNOLD, P.E.
FLORIDA P.E. #81294

RIV-B PL 3 | WS
SHEET 6 OF 9



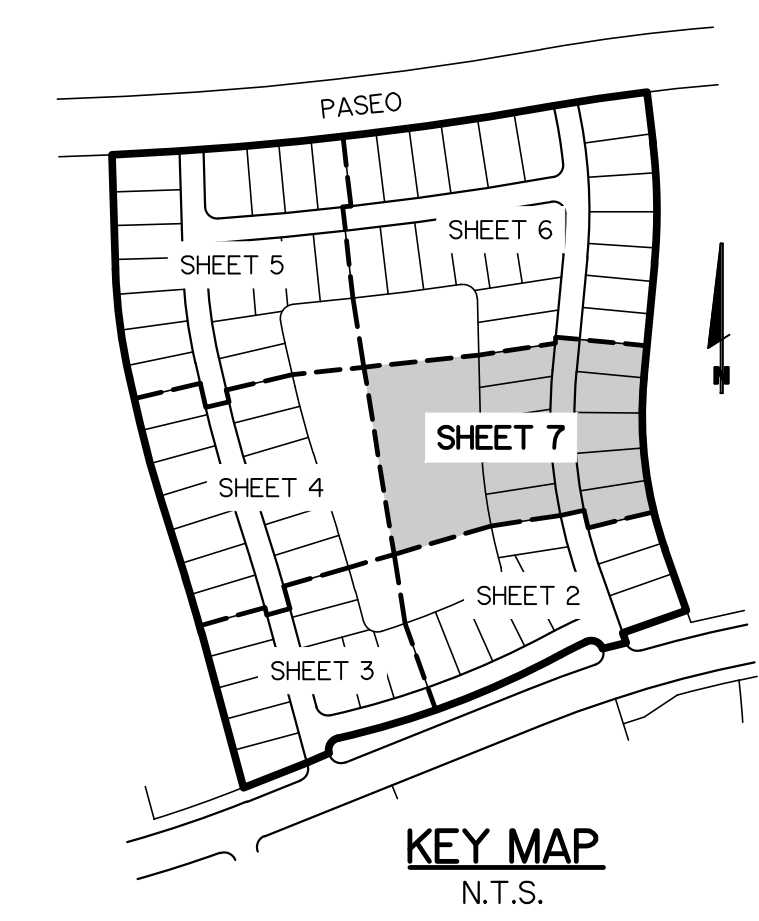
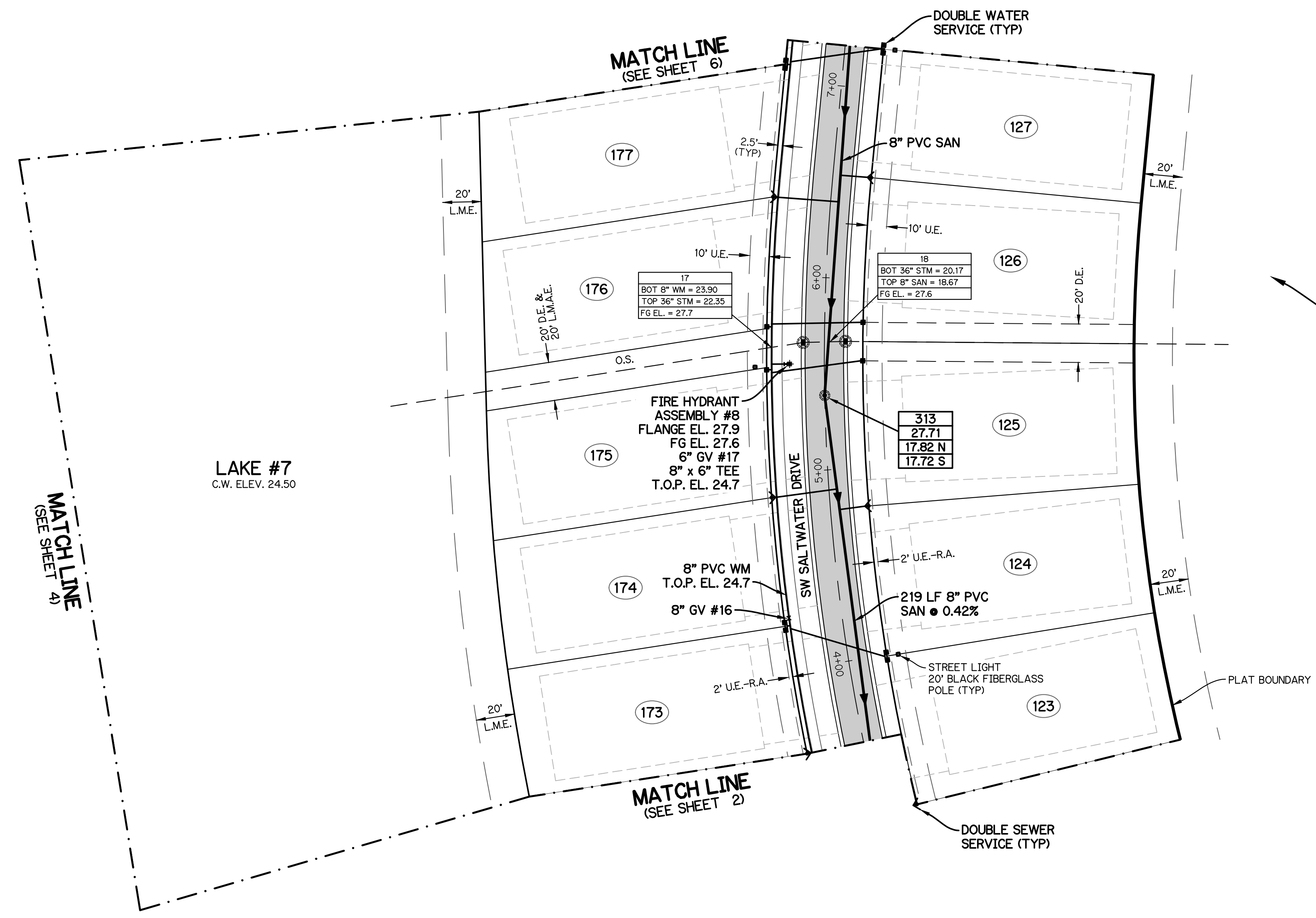
- NOTES:**
- ALL CONSTRUCTION SHALL BE IN ACCORDANCE WITH THE CITY OF PORT ST. LUCIE UTILITY SYSTEMS DEPARTMENT (PSLUSD) UTILITY STANDARDS MANUAL, 2019 EDITION AS WELL AS THE PSLUSD UTILITY STANDARD DETAILS, 2019 EDITION. A COPY OF THE 2019 EDITION OF THE PSLUSD UTILITY STANDARDS MANUAL, AND UTILITY STANDARD DETAILS SHALL BE AVAILABLE ON-SITE AT ALL TIMES UTILITY RELATED WORK IS BEING PERFORMED.
 - PRIOR TO CONSTRUCTION IT IS THE RESPONSIBILITY OF THE CONTRACTOR TO FIELD VERIFY (ELEVATION AND LOCATION) ALL EXISTING UTILITIES. ANY DISCREPANCIES SHALL BE BROUGHT TO THE ATTENTION OF THE ENGINEER PRIOR (EOR) TO CONTINUATION OF WORK.
 - THERE SHALL BE NO FIELD CHANGES OR DEVIATIONS FROM DESIGN WITHOUT PRIOR WRITTEN APPROVAL OF THE PSLUSD AND ENGINEER OF RECORD.
 - ELEVATIONS - ALL ELEVATIONS REFER TO NORTH AMERICAN VERTICAL DATUM OF 1988 (NAVD88).
 - ALL WATER AND WASTEWATER PRESSURE MAINS SHALL BE PVC, C-900, DR18 (PRESSURE CLASS 235).
 - ALL GRAVITY SEWER PIPE, FITTINGS AND SERVICE LINES SHALL BE PVC, SDR 26 AND, AS A MINIMUM, CONFORM TO ASTM D-3034.
 - VALVES SHALL NOT BE PLACED IN CURBS, GUTTERS, SIDEWALKS, PARKING SPACES AND HANDICAP RAMPS. WHERE CONCRETE VALVE PADS TO BE OWNED BY PSLUSD ARE ADJACENT TO SIDEWALKS, THE PADS SHALL BE POURED AS PART OF THE SIDEWALK POUR WITH NO JOINTS.

WATER AND SANITARY SERVICES		
LOT No.	TYPE	AS-BUILT COORDINATE
122/123	DSS	-
123/124	DWS	-
124/125	DSS	-
125	SWS	-
126	SWS	-
126/127	DSS	-
127/128	DWS	-
172/173	DSS	-
173/174	DWS	-
174/175	DSS	-
175	SWS	-
176	SWS	-
176/177	DSS	-
177/178	DWS	-

SWS = SINGLE WATER SERVICE, DWS = DOUBLE WATER SERVICE
 SSS = SINGLE SEWER SERVICE, DSS = DOUBLE SEWER SERVICE

LEGEND

<p>WATER MAIN WITH VALVE, SINGLE WATER SERVICE, DOUBLE WATER SERVICE AND FIRE HYDRANT</p> <p>SANITARY SEWER MAIN WITH SINGLE SEWER SERVICE, DOUBLE WATER SERVICE, MANHOLE, CALLOUT AND FLOW DIRECTION</p> <p>STORM SEWER WITH CATCH BASIN</p> <p>BACTERIOLOGICAL SAMPLE POINT</p> <p>STREET LIGHTS</p> <p>PAVEMENT TO BE CONSTRUCTED WITH REQUIRED IMPROVEMENTS</p> <p>LOT NUMBER</p>		<p>BUFFER EASEMENT DRAINAGE EASEMENT ELEVATION FINISHED GRADE FIRE HYDRANT FORCE MAIN GATE VALVE INVERT LANDSCAPE EASEMENT LAKE MAINTENANCE ACCESS EASEMENT LAKE MAINTENANCE EASEMENT MANHOLE OPEN SPACE POINT OF SERVICE CITY OF PORT ST. LUCIE UTILITY EASEMENT CITY OF PORT ST. LUCIE UTILITY SYSTEMS DEPARTMENT SANITARY SEWER TOP OF PIPE UTILITY EASEMENT UTILITY EASEMENT - RESTRICTED AREA (SEE "U.E." PLAT DEDICATION) WATER MAIN</p>	<p>B.E. D.E. EL. FG F.H. FM GV INV. L.E. L.M.E. L.M.E. MH. O.S. P.O.S. P.S.L.U.E. PSLUSD SAN T.O.P. U.E. U.E.-R.A. WM</p>
---	--	--	---



RIVERLAND
PARCEL B
PLAT ONE

LAKE #5
C.W. ELEV. 24.50

WATER AND SEWER PLAN
 FOR
RIVERLAND-PARCEL B
 PLAT THREE

REVISIONS	DATE	BY	CK

GLH ENGINEERING, LLC
 1600 SAWGRASS CORPORATE
 PARKWAY, SUITE 400
 SUNRISE, FLORIDA 33323
 PHONE: (954) 753-1730

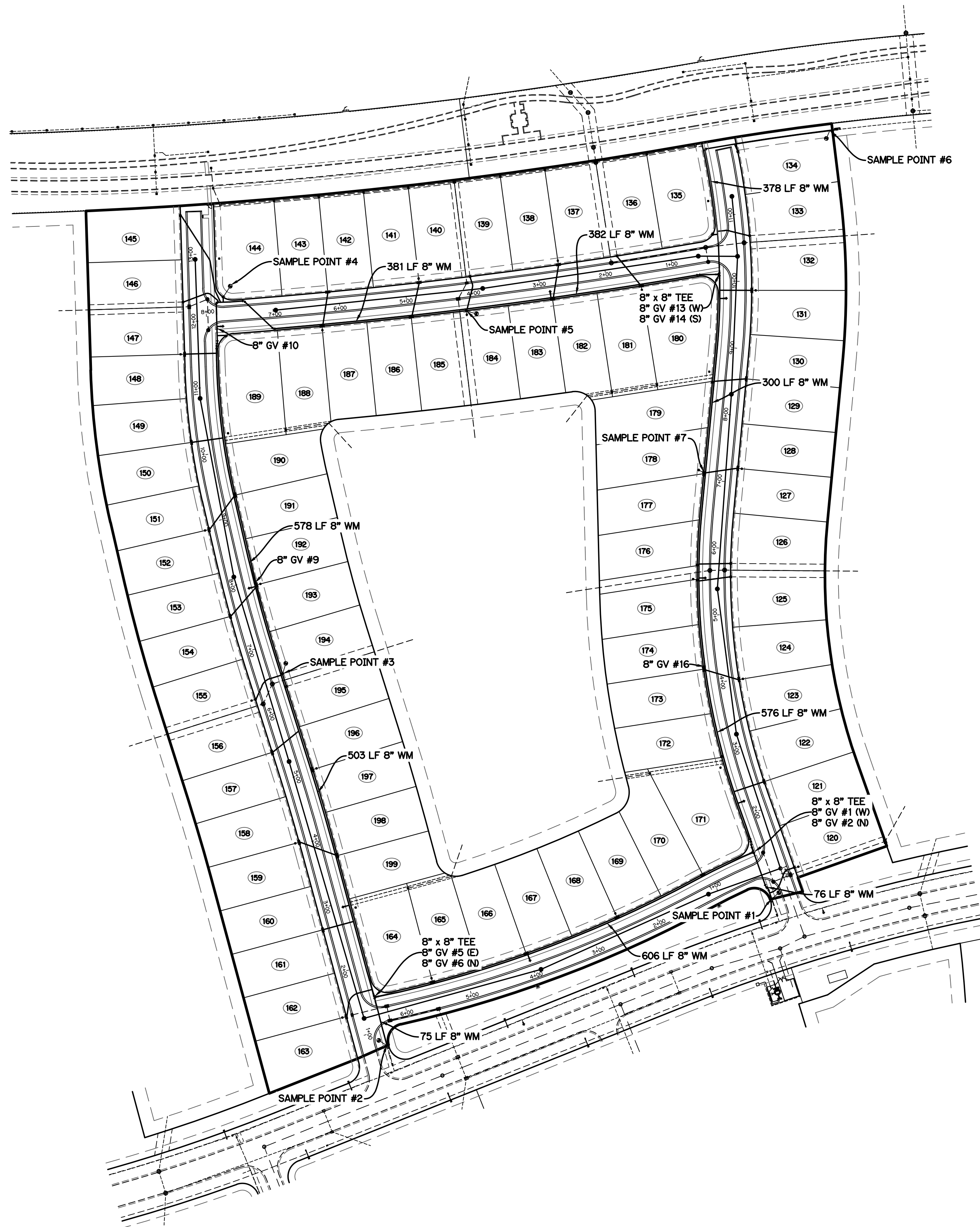
SCALE: 1"=40'
 DATE: 9/8/21
 DESIGNED BY: AQC
 CHECKED BY: BA
 FILE NAME:
 RIV-B PL 3 WS

BRIAN ARNOLD, P.E.
 FLORIDA P.E. #81294

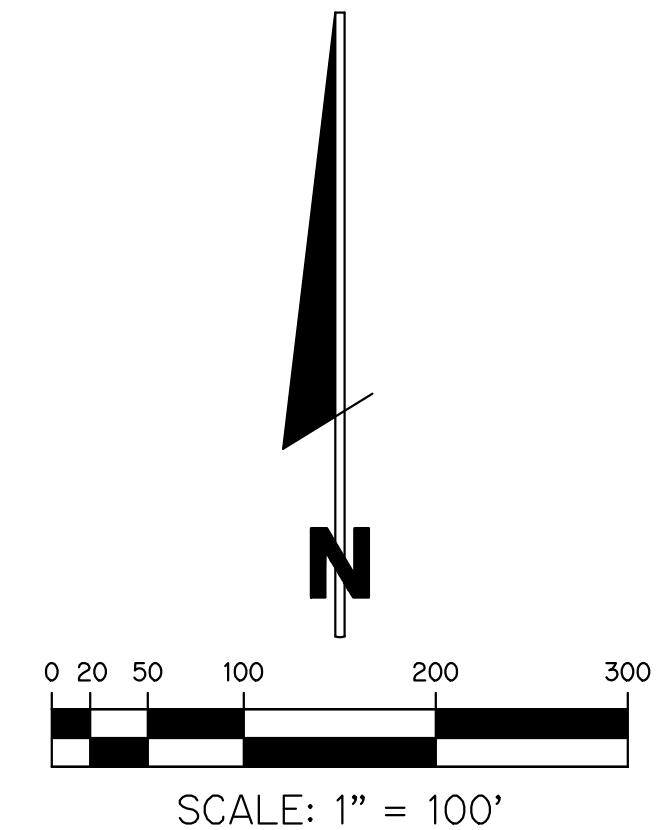
RIV-B PL 3 | WS

SHEET 7 OF 9

NOTE: ALL GRADES SHOWN ARE IN NAVD88
 P21-106 (PSLUSD 5266D)



- NOTES:
1. ALL CONSTRUCTION SHALL BE IN ACCORDANCE WITH THE CITY OF PORT ST. LUCIE UTILITY SYSTEMS DEPARTMENT (PSLUSD) UTILITY STANDARDS MANUAL, 2019 EDITION AS WELL AS THE PSLUSD UTILITY STANDARD DETAILS, 2019 EDITION. A COPY OF THE 2019 EDITION OF THE PSLUSD UTILITY STANDARDS MANUAL AND UTILITY STANDARD DETAILS SHALL BE AVAILABLE ON-SITE AT ALL TIMES UTILITY RELATED WORK IS BEING PERFORMED.
 2. PRIOR TO CONSTRUCTION IT IS THE RESPONSIBILITY OF THE CONTRACTOR TO FIELD VERIFY (ELEVATION AND LOCATION) ALL EXISTING UTILITIES. ANY DISCREPANCIES SHALL BE BROUGHT TO THE ATTENTION OF THE ENGINEER PRIOR (EOR) TO CONTINUATION OF WORK.
 3. THERE SHALL BE NO FIELD CHANGES OR DEVIATIONS FROM DESIGN WITHOUT PRIOR WRITTEN APPROVAL OF THE PSLUSD AND ENGINEER OF RECORD.
 4. ELEVATIONS - ALL ELEVATIONS REFER TO NORTH AMERICAN VERTICAL DATUM OF 1988 (NAVD88).
 5. ALL WATER AND WASTEWATER PRESSURE MAINS SHALL BE PVC, C-900, DR18 (PRESSURE CLASS 235).
 6. ALL GRAVITY SEWER PIPE, FITTINGS AND SERVICE LINES SHALL BE PVC, SDR 26 AND, AS A MINIMUM, CONFORM TO ASTM D-3034.
 7. VALVES SHALL NOT BE PLACED IN CURBS, GUTTERS, SIDEWALKS, PARKING SPACES AND HANDICAP RAMPS; WHERE CONCRETE VALVE PADS TO BE OWNED BY PSLUSD ARE ADJACENT TO SIDEWALKS, THE PADS SHALL BE POURED AS PART OF THE SIDEWALK POUR WITH NO JOINTS.



LEGEND

- SAMPLE POINT
- WATER MAIN

OVERALL WATER SAMPLE POINT MAP
FOR
RIVERLAND-PARCEL B
PLAT THREE

REVISIONS	DATE	BY	CK

GLH ENGINEERING, LLC
 1600 SAWGRASS CORPORATE
 PARKWAY, SUITE 400
 SUNRISE, FLORIDA 33323
 PHONE: (954) 753-1730

SCALE: 1"=80'
 DATE: 9/8/21
 DESIGNED BY: AQC
 CHECKED BY: BA
 FILE NAME:
 RIV-B PL 3 WS

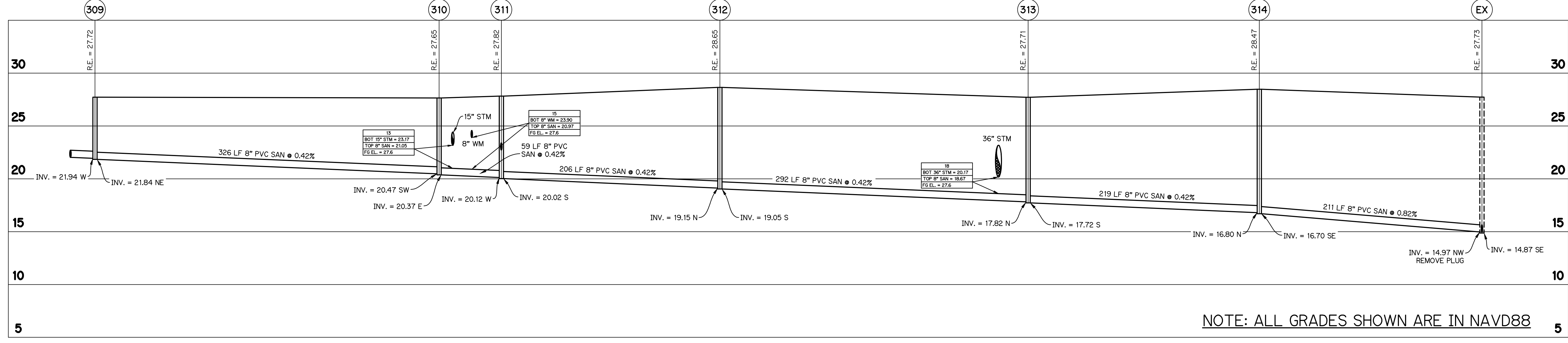
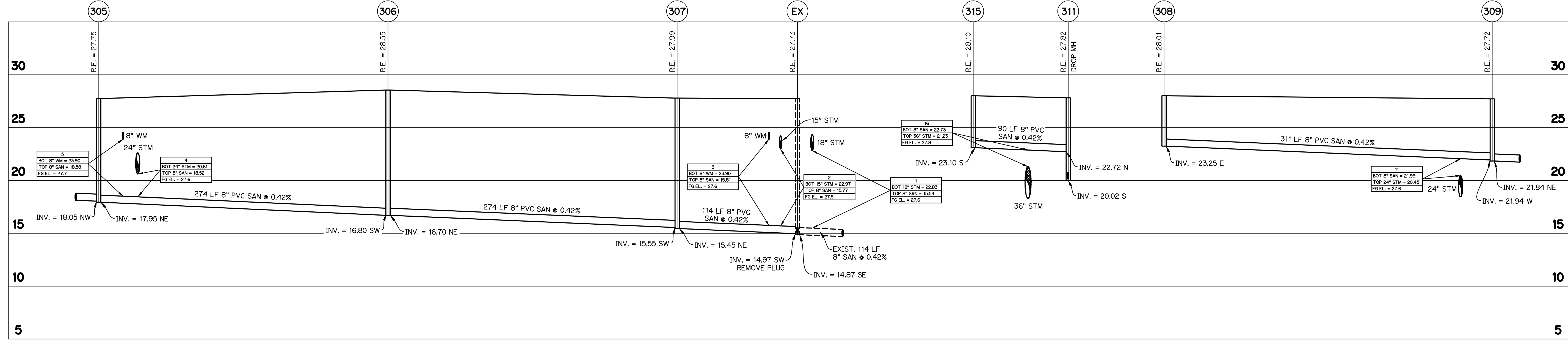
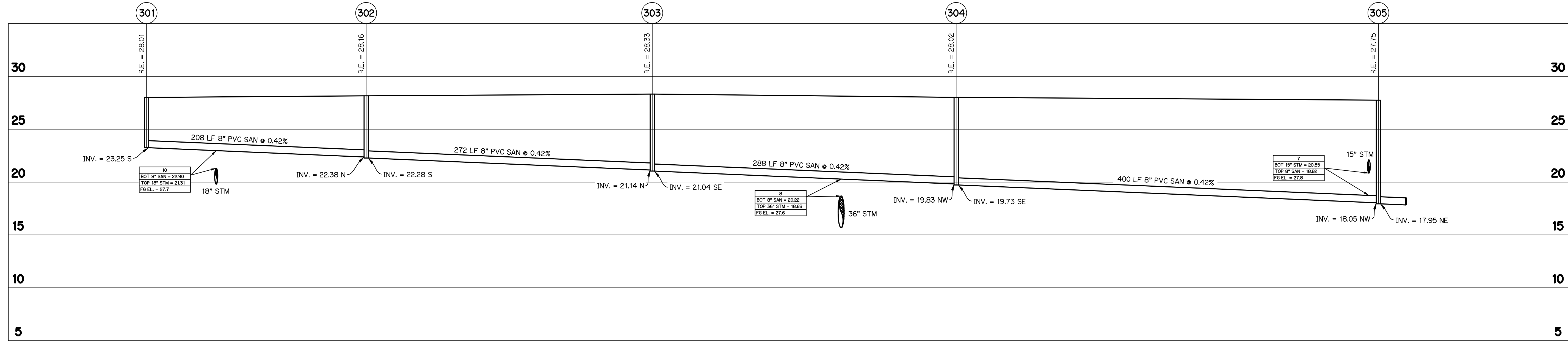
BRIAN ARNOLD, P.E.
 FLORIDA P.E. #81294

RIV-B PL 3 | WS

SHEET 8 OF 9

NOTE: ALL GRADES SHOWN ARE IN NAVD88
P21-106 (PSLUSD 5266D)

SEWER PROFILES
FOR
RIVERLAND-PARCEL B
PLAT THREE



NOTE: ALL GRADES SHOWN ARE IN NAVD88

NO.	REVISIONS	DATE	BY	CK

GLH ENGINEERING, LLC
1600 SAWGRASS CORPORATE
PARKWAY, SUITE 400
SUNRISE, FLORIDA 33323
PHONE: (954) 753-1730

SCALE: HORIZ. 1" = 50'
VERT. 1" = 5'
DATE: 9/8/21
DESIGNED BY: AQC
CHECKED BY: BA
FILE NAME:
RIV-B PL 3 WS

BRIAN ARNOLD, P.E.
FLORIDA P.E. #81294

RIV-B PL 3 | WS

SHEET 9 OF 9