

Project Team:

Client & Property Owner: Midway Glades Developer
 7807 Baymeadows Road, Suite 205
 Jacksonville, Florida 32256

Land Planner / Landscape Architect: Lucido & Associates
 701 East Ocean Boulevard
 Stuart, Florida 34994

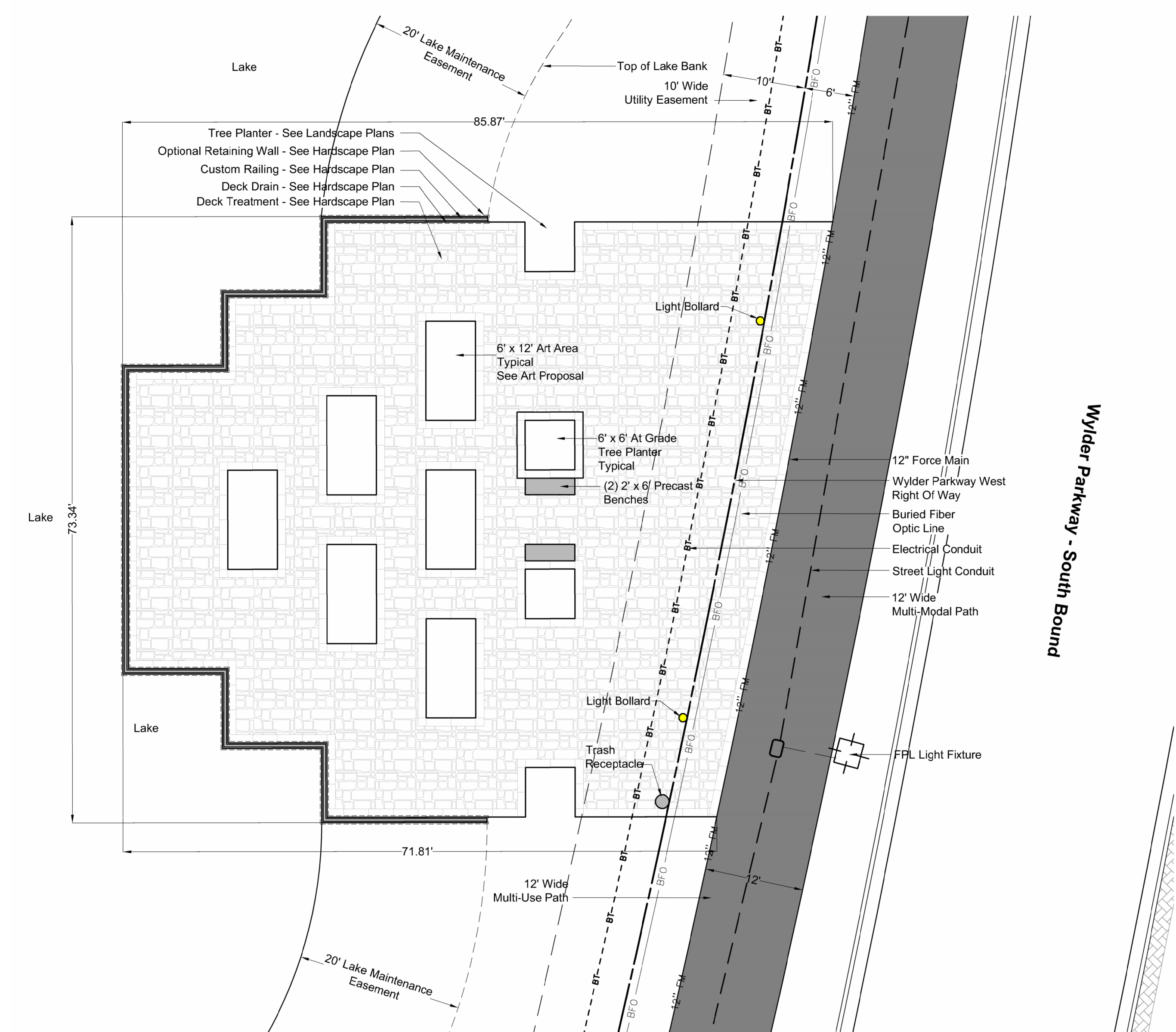
Engineer: Kimley Horn And Associates
 445 24th Street, Suite 200
 Vero Beach, Florida 32960

Surveyor: Kimley Horn And Associates
 445 24th Street, Suite 200
 Vero Beach, Florida 32960

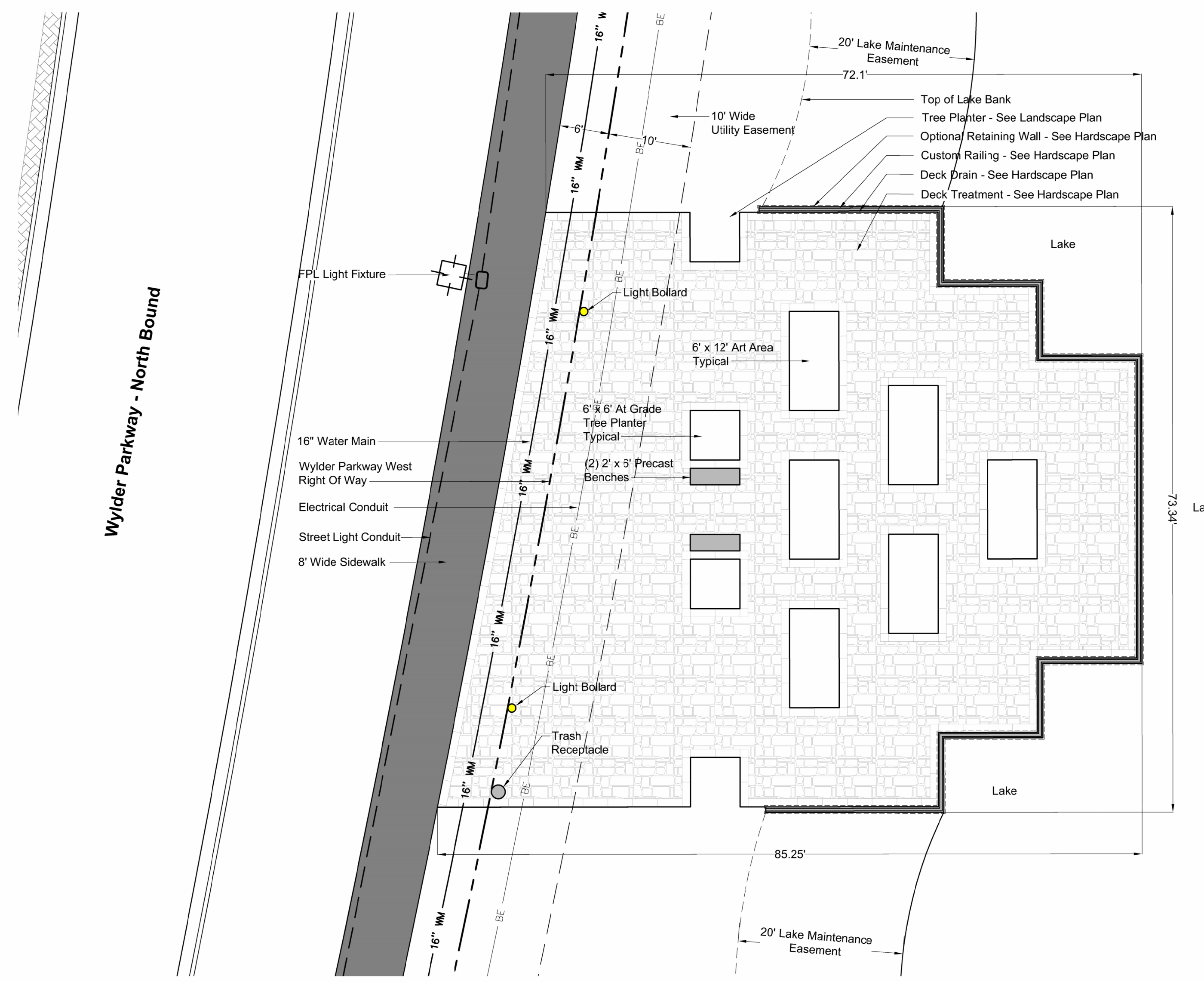


Site Location
 Scale: n.t.s.

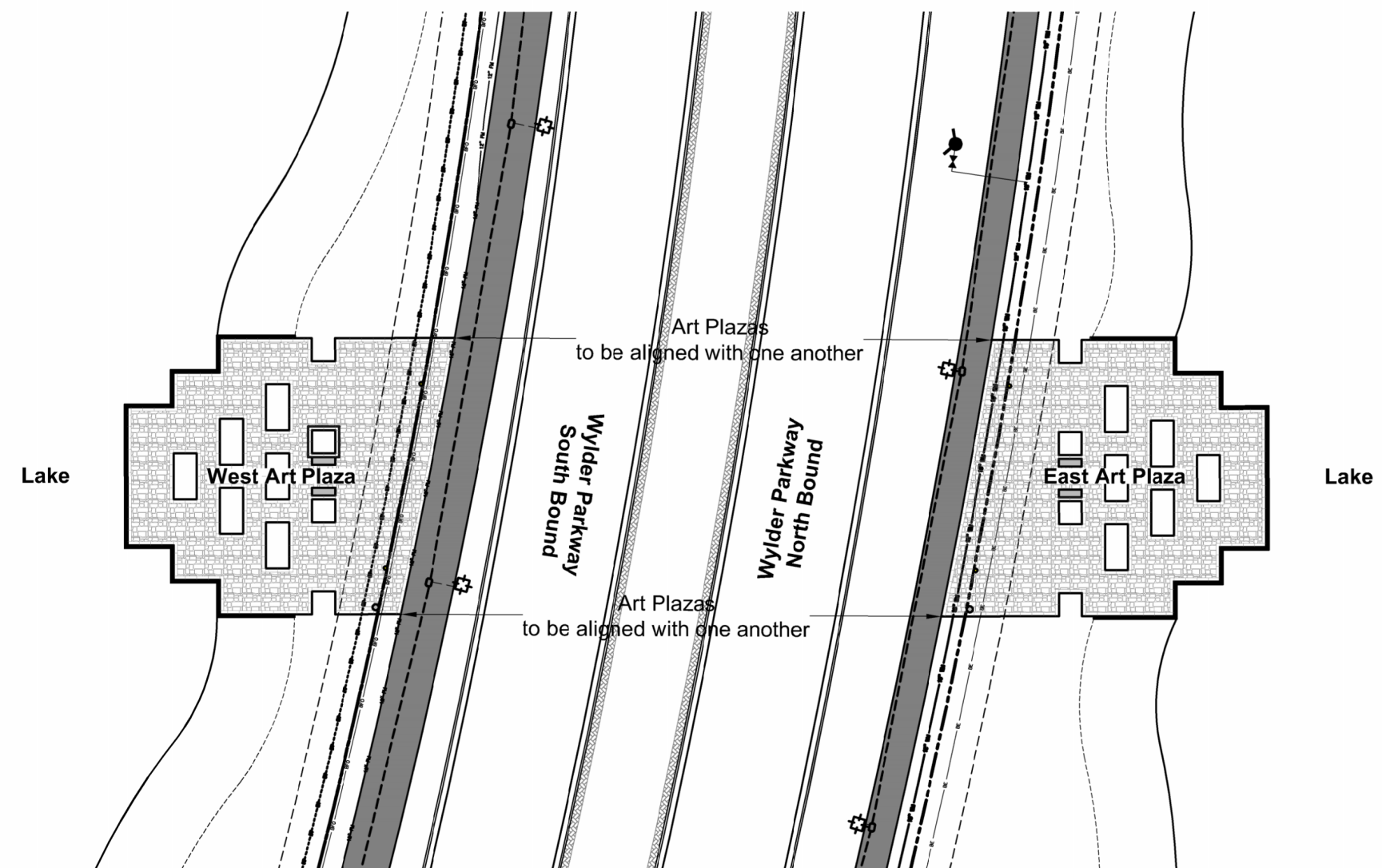
Wylder



West Side Art In Public Places Site Plan - Phase 1
 Residential Public Art Requirement
 Scale: 1" = 10'



Future East Art In Public Places Site Plan - Phase 2
 Remaining Residential & Commercial Public Art Requirement
 Scale: 1" = 10'

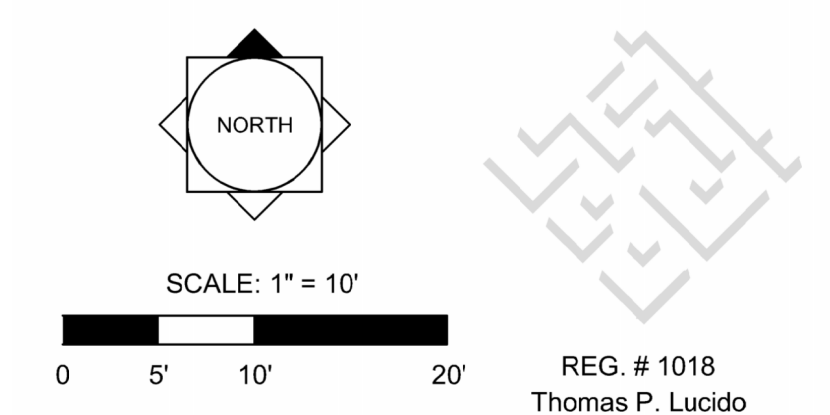


Art In Public Places Conceptual Site Locations
 Scale: 1" = 40'

Wylder
 Art In Public Places
 Site Plan

Port St Lucie, Florida
 P22-278
 PSLUSD# xx-xxx-xx

Date	By	Description
01.24.24	SJS	Client Review
02.09.24	SJS	Revised



Designer: SJS Sheet
 Manager: SG
 Project Number: 20-535
 Municipal Number: P
 Computer File: 20-535 - Wylder AIPP At Commercial - Site Plan.dwg

SP1

© Copyright Lucido & Associates. These documents and their contents are the property of Lucido & Associates. Any reproductions, revisions, modifications or use of these documents without the express written consent of Lucido & Associates is prohibited by law.