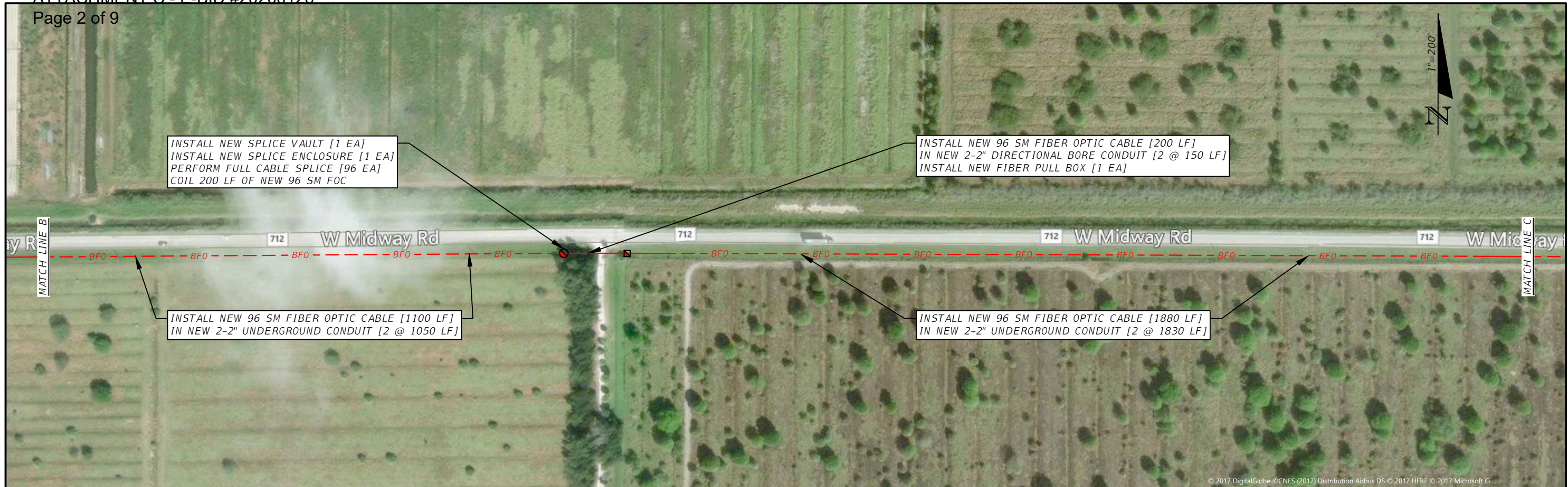


REVISIONS		REVISIONS			CITY OF PORT ST. LUCIE PUBLIC WORKS			MIDWAY RD FIBER PLAN	SHEET NO.
DATE	DESCRIPTION	DATE	DESCRIPTION		ROAD NO.	COUNTY	FINANCIAL PROJECT ID		
				Traffic Control Devices, Inc. 242 North Westmonte Dr. Altamonte Springs, FL 32714 Phone - 407.869.5300 Fax - 407.682.0076 www.TCD-USA.com	N/A	ST. LUCIE	N/A	IT-1	



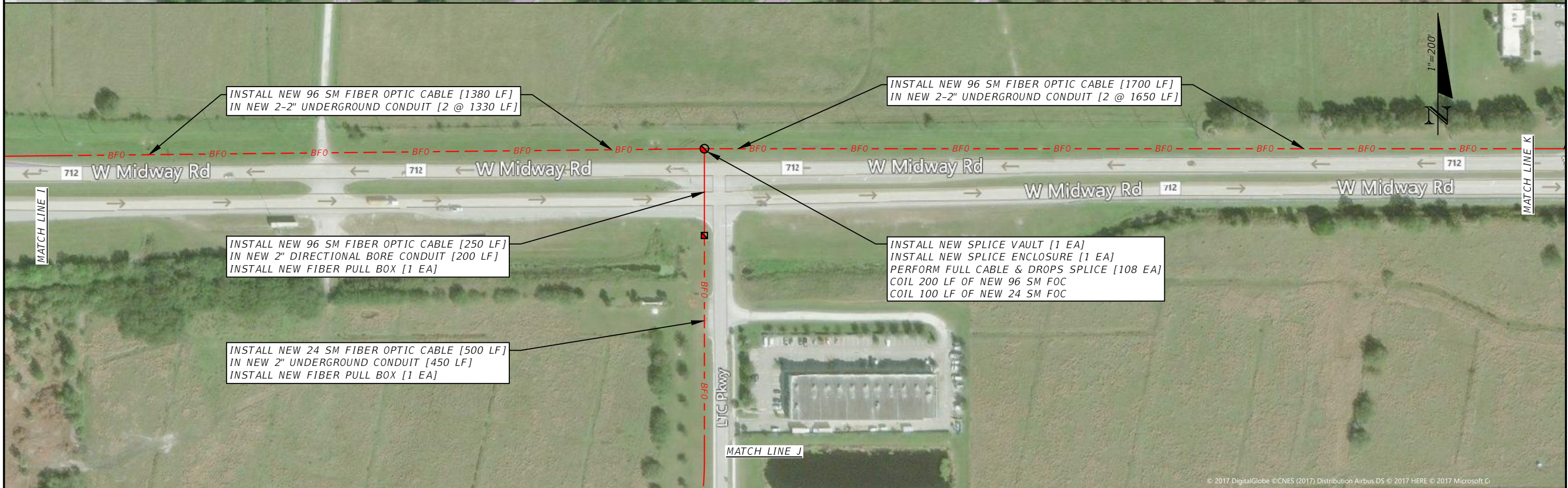
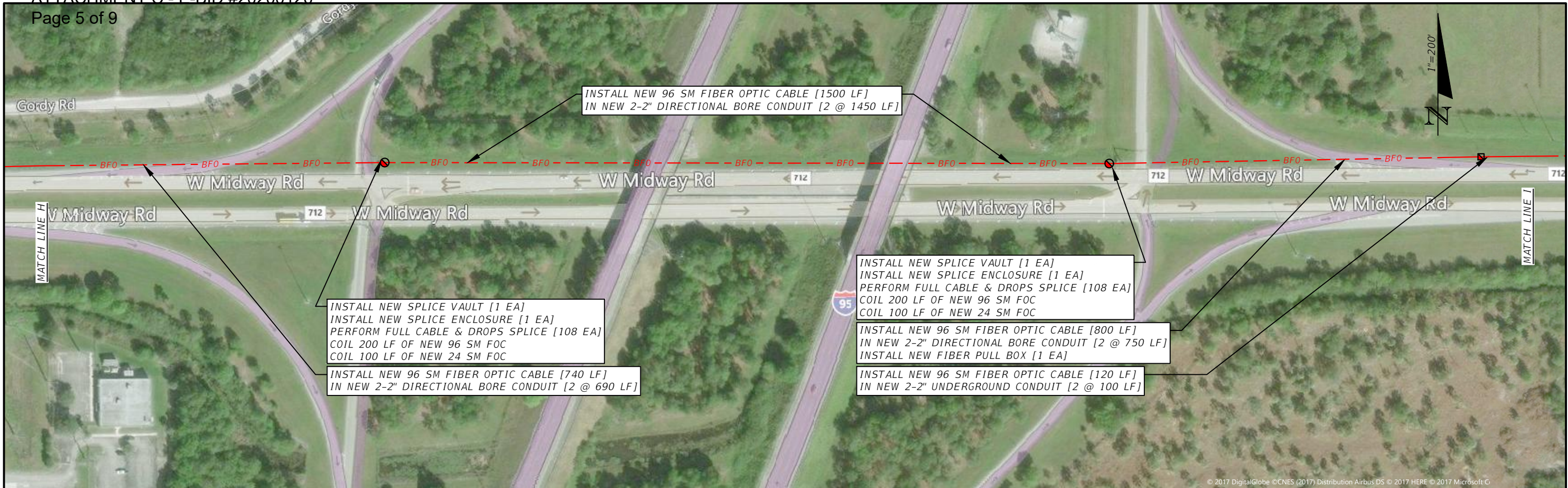
REVISIONS		REVISIONS		 Traffic Control Devices, Inc. 242 North Westmonte Dr. Altamonte Springs, FL 32714 Phone - 407.869.5300 Fax - 407.682.0076 www.TCD-USA.com	CITY OF PORT ST. LUCIE PUBLIC WORKS			MIDWAY RD FIBER PLAN	SHEET NO. IT-2
DATE	DESCRIPTION	DATE	DESCRIPTION		ROAD NO.	COUNTY	FINANCIAL PROJECT ID		
					N/A	ST. LUCIE	N/A		



REVISIONS		REVISIONS		 TRAFFIC CONTROL DEVICES, INC. Traffic Control Devices, Inc. 242 North Westmonte Dr. Altamonte Springs, FL 32714 Phone - 407.869.5300 Fax - 407.682.0076 www.TCD-USA.com	CITY OF PORT ST. LUCIE PUBLIC WORKS			SHEET NO. IT-3
DATE	DESCRIPTION	DATE	DESCRIPTION		ROAD NO.	COUNTY	FINANCIAL PROJECT ID	
					N/A	ST. LUCIE	N/A	MIDWAY RD FIBER PLAN R:\Marketing 2015\Port St Lucie\FiberRun\Midway_1023.dwg



REVISIONS		REVISIONS		 TRAFFIC CONTROL DEVICES, INC. 242 North Westmonte Dr. Altamonte Springs, FL 32714 Phone - 407.869.5300 Fax - 407.682.0076 www.TCD-USA.com	CITY OF PORT ST. LUCIE PUBLIC WORKS			MIDWAY RD FIBER PLAN	SHEET NO. IT-4
DATE	DESCRIPTION	DATE	DESCRIPTION		ROAD NO.	COUNTY	FINANCIAL PROJECT ID		
					N/A	ST. LUCIE	N/A		



REVISIONS		REVISIONS		 TRAFFIC CONTROL DEVICES, INC. Traffic Control Devices, Inc. 242 North Westmonte Dr. Altamonte Springs, FL 32714 Phone - 407.869.5300 Fax - 407.682.0076 www.TCD-USA.com	CITY OF PORT ST. LUCIE PUBLIC WORKS			SHEET NO. IT-5
DATE	DESCRIPTION	DATE	DESCRIPTION		ROAD NO.	COUNTY	FINANCIAL PROJECT ID	
					N/A	ST. LUCIE	N/A	

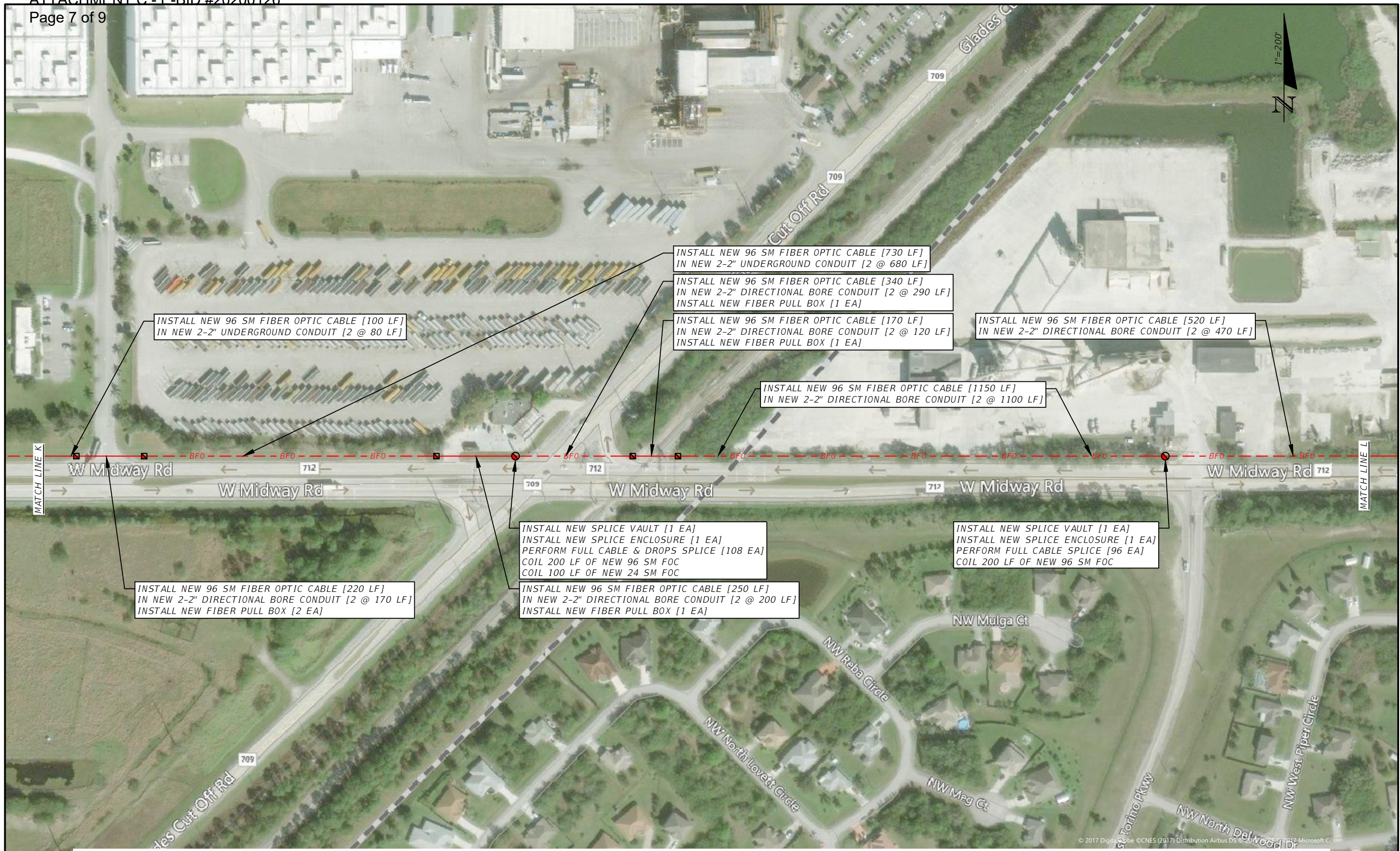


© 2017 DigitalGlobe ©CNES (2017) Distribution Airbus DS © 2017 HERE © 2017 Microsoft C



© 2017 DigitalGlobe ©CNES (2017) Distribution Airbus DS © 2017 Microsoft Corporation

REVISIONS		REVISIONS		 Traffic Control Devices, Inc. 242 North Westmonte Dr. Altamonte Springs, FL 32714 Phone - 407.869.5300 Fax - 407.682.0076 www.TCD-USA.com	CITY OF PORT ST. LUCIE PUBLIC WORKS			MIDWAY RD FIBER PLAN	SHEET NO. IT-6
DATE	DESCRIPTION	DATE	DESCRIPTION		ROAD NO.	COUNTY	FINANCIAL PROJECT ID		
					N/A	ST. LUCIE	N/A		



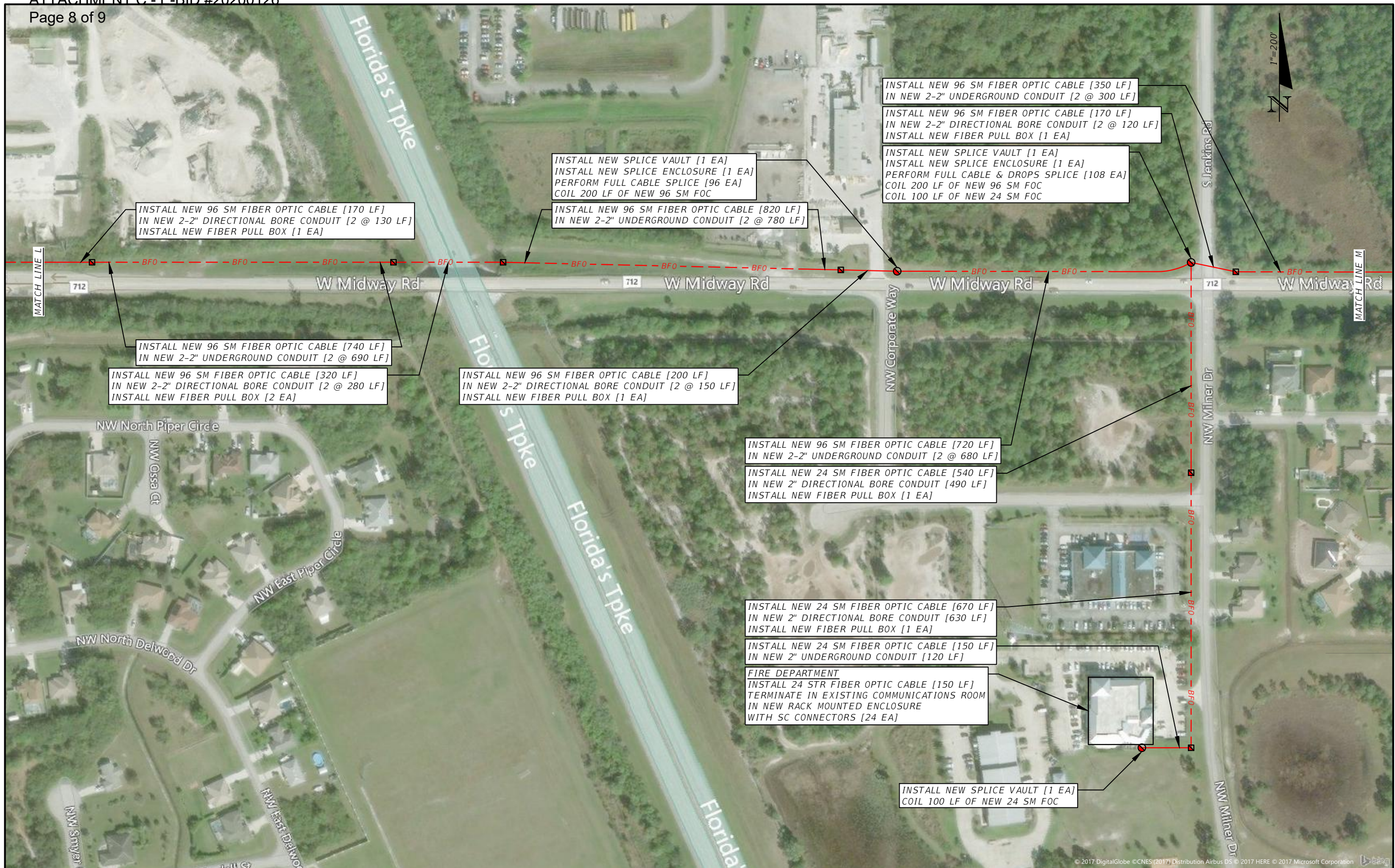
REVISIONS			
DATE	DESCRIPTION	DATE	DESCRIPTION

TRAFFIC CONTROL DEVICES, INC.
 Traffic Control Devices, Inc.
 242 North Westmonte Dr.
 Altamonte Springs, FL 32714
 Phone - 407.869.5300
 Fax - 407.682.0076
 www.TCD-USA.com

CITY OF PORT ST. LUCIE PUBLIC WORKS		
ROAD NO.	COUNTY	FINANCIAL PROJECT ID
N/A	ST. LUCIE	N/A

MIDWAY RD FIBER PLAN

SHEET NO.
IT-7



© 2017 DigitalGlobe © CNES (2017) Distribution Airbus DS © 2017 HERE © 2017 Microsoft Corporation

REVISIONS		REVISIONS		 Traffic Control Devices, Inc. 242 North Westmonte Dr. Altamonte Springs, FL 32714 Phone - 407.869.5300 Fax - 407.682.0076 www.TCD-USA.com	CITY OF PORT ST. LUCIE PUBLIC WORKS			MIDWAY RD FIBER PLAN	SHEET NO.
DATE	DESCRIPTION	DATE	DESCRIPTION		ROAD NO.	COUNTY	FINANCIAL PROJECT ID		IT-8
					N/A	ST. LUCIE	N/A		



REVISIONS		REVISIONS		 Traffic Control Devices, Inc. 242 North Westmonte Dr. Altamonte Springs, FL 32714 Phone - 407.869.5300 Fax - 407.682.0076 www.TCD-USA.com	CITY OF PORT ST. LUCIE PUBLIC WORKS			MIDWAY RD FIBER PLAN	SHEET NO.
DATE	DESCRIPTION	DATE	DESCRIPTION		ROAD NO.	COUNTY	FINANCIAL PROJECT ID		IT-9
					N/A	ST. LUCIE	N/A		