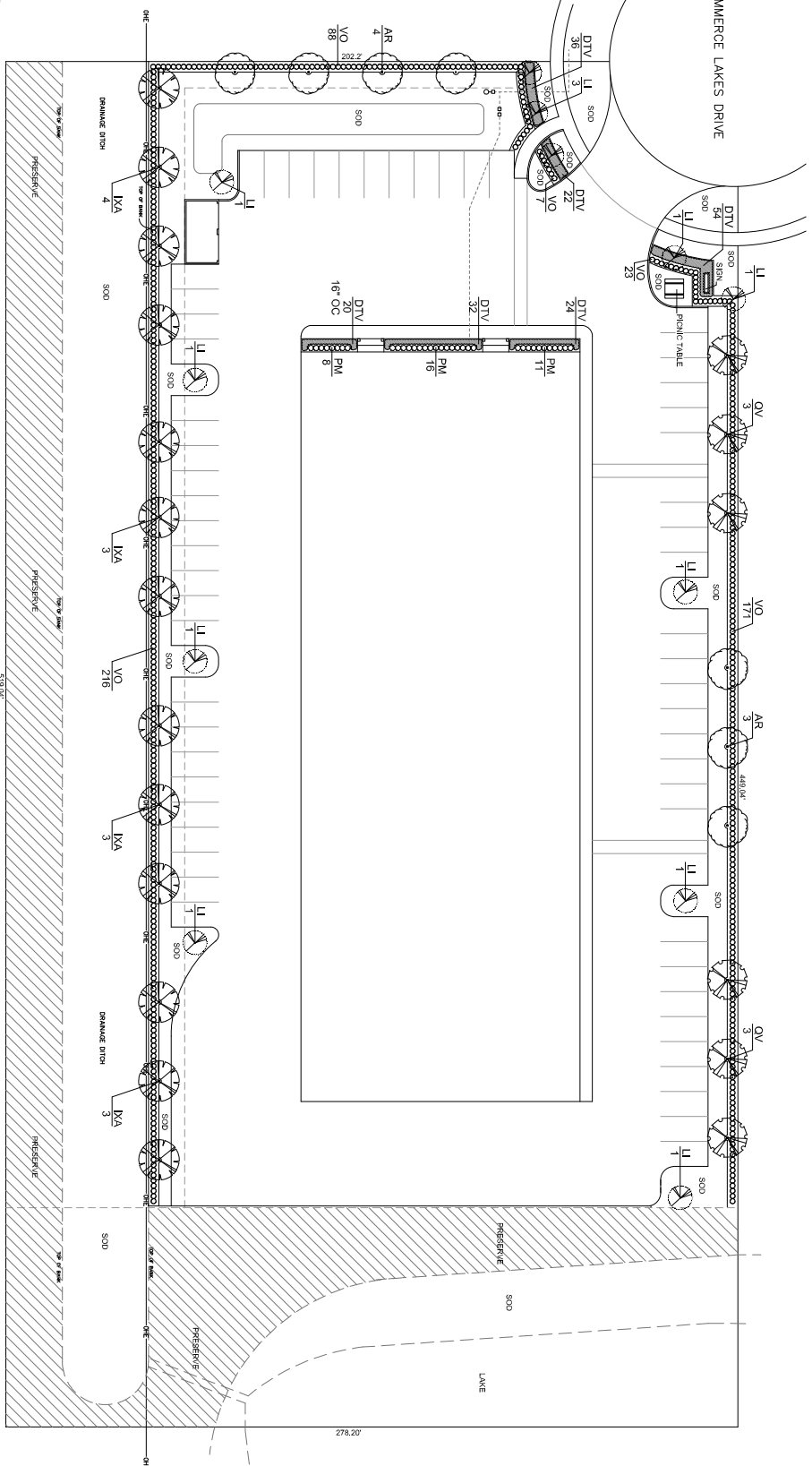


LANDSCAPE CONTRACTOR NOTES
 ALL PLANT MATERIAL SHALL BE SUPPLIED BY THE LANDSCAPE CONTRACTOR. THE LANDSCAPE CONTRACTOR SHALL BE RESPONSIBLE FOR THE SELECTION, ACQUISITION, AND DELIVERY OF ALL PLANT MATERIAL TO THE PROJECT SITE. THE LANDSCAPE CONTRACTOR SHALL BE RESPONSIBLE FOR THE PROTECTION AND MAINTENANCE OF ALL PLANT MATERIAL THROUGHOUT THE CONSTRUCTION PERIOD. THE LANDSCAPE CONTRACTOR SHALL BE RESPONSIBLE FOR THE REPLACEMENT OF ANY PLANT MATERIAL THAT IS DAMAGED OR DESTROYED DURING CONSTRUCTION. THE LANDSCAPE CONTRACTOR SHALL BE RESPONSIBLE FOR THE PROTECTION AND MAINTENANCE OF ALL PLANT MATERIAL THROUGHOUT THE CONSTRUCTION PERIOD. THE LANDSCAPE CONTRACTOR SHALL BE RESPONSIBLE FOR THE REPLACEMENT OF ANY PLANT MATERIAL THAT IS DAMAGED OR DESTROYED DURING CONSTRUCTION.

LANDSCAPE CONTRACTOR NOTES
 ALL PLANT MATERIAL SHALL BE SUPPLIED BY THE LANDSCAPE CONTRACTOR. THE LANDSCAPE CONTRACTOR SHALL BE RESPONSIBLE FOR THE SELECTION, ACQUISITION, AND DELIVERY OF ALL PLANT MATERIAL TO THE PROJECT SITE. THE LANDSCAPE CONTRACTOR SHALL BE RESPONSIBLE FOR THE PROTECTION AND MAINTENANCE OF ALL PLANT MATERIAL THROUGHOUT THE CONSTRUCTION PERIOD. THE LANDSCAPE CONTRACTOR SHALL BE RESPONSIBLE FOR THE REPLACEMENT OF ANY PLANT MATERIAL THAT IS DAMAGED OR DESTROYED DURING CONSTRUCTION. THE LANDSCAPE CONTRACTOR SHALL BE RESPONSIBLE FOR THE PROTECTION AND MAINTENANCE OF ALL PLANT MATERIAL THROUGHOUT THE CONSTRUCTION PERIOD. THE LANDSCAPE CONTRACTOR SHALL BE RESPONSIBLE FOR THE REPLACEMENT OF ANY PLANT MATERIAL THAT IS DAMAGED OR DESTROYED DURING CONSTRUCTION.



REQUIRED PLANTING	PROPOSED PLANTING
15ft x 11 ft. of required perimeter buffer minus 30 ft. access way & 27ft. 11. (north & south) @ 18ft. 11. (2 x east & west) of preserve & 54 ft. 9 (preserve & ditch) = 1034 L. ft. of buffer. One tree for every 30' of required buffer = 34.4 = 35 required trees.	38 trees
one shrub for every 2' of required buffer = 1034 L. ft. divided by 2 = 517 shrubs	540 shrubs

ADDITIONAL REQUIREMENTS
 50% of trees shall be flowering trees
 20% of trees shall be native varieties
 4 varieties of trees between 3' and 40' trees required

PLANT MATERIAL LIST			
TREES & PALMS (Includes native tree)			
Code Name	Quantity	Scientific Name	Common Name
AR	7	ACER RUBRUM	FLORIDA RED MAPLE
IKA	13	ILEX ALTA	EVERGREEN HOLEY
LI	12	LABURNUM VITICLORUM	CRAB APPLE
OV	6	QUERCUS VIRGINIANA	LIVE OAK
SHRUBS & GROUNDCOVERS			
Code Name	Quantity	Scientific Name	Common Name
DTV	188	DANIELLA TYSANICA	FLAME LILY
PM	35	PODOCARPUS	YEW
VO	595	VIBURNUM COQUITSIUM	SWIFT VIBURNUM
OTHER MATERIALS			
MULCH	43	CU. YDS. ELMWOOD MULCH (EST.)	(NO CYPRESS MULCH)
SOD	32,900	SQ. FT. BAMA SOD (EST.)	

DATE	BY	REVISIONS



LANDSCAPE PLAN
 COMMERCE LAKES DRIVE WAREHOUSE
 PREPARED FOR : A GREAT HOME

DANIEL J. SLOCUM, LANDSCAPE ARCHITECT, P.L.L.C. #746
 1001 N. W. 22nd Ave., Ft. Lauderdale, FL 33309
 TEL: 754-463-1270 FAX: 754-463-1271
 DANIEL@DJSLOCUM.COM

L 1