

# Mason Toscana Master Sign Program

Planning and Zoning Board Meeting of June 7, 2022  
P22-054



# Summary:

The proposed program provides the opportunity for the residential and commercial properties within the Toscana PUD to share one (1) of the two (2) main monument signs that will be located at each of the two entrances to the project.

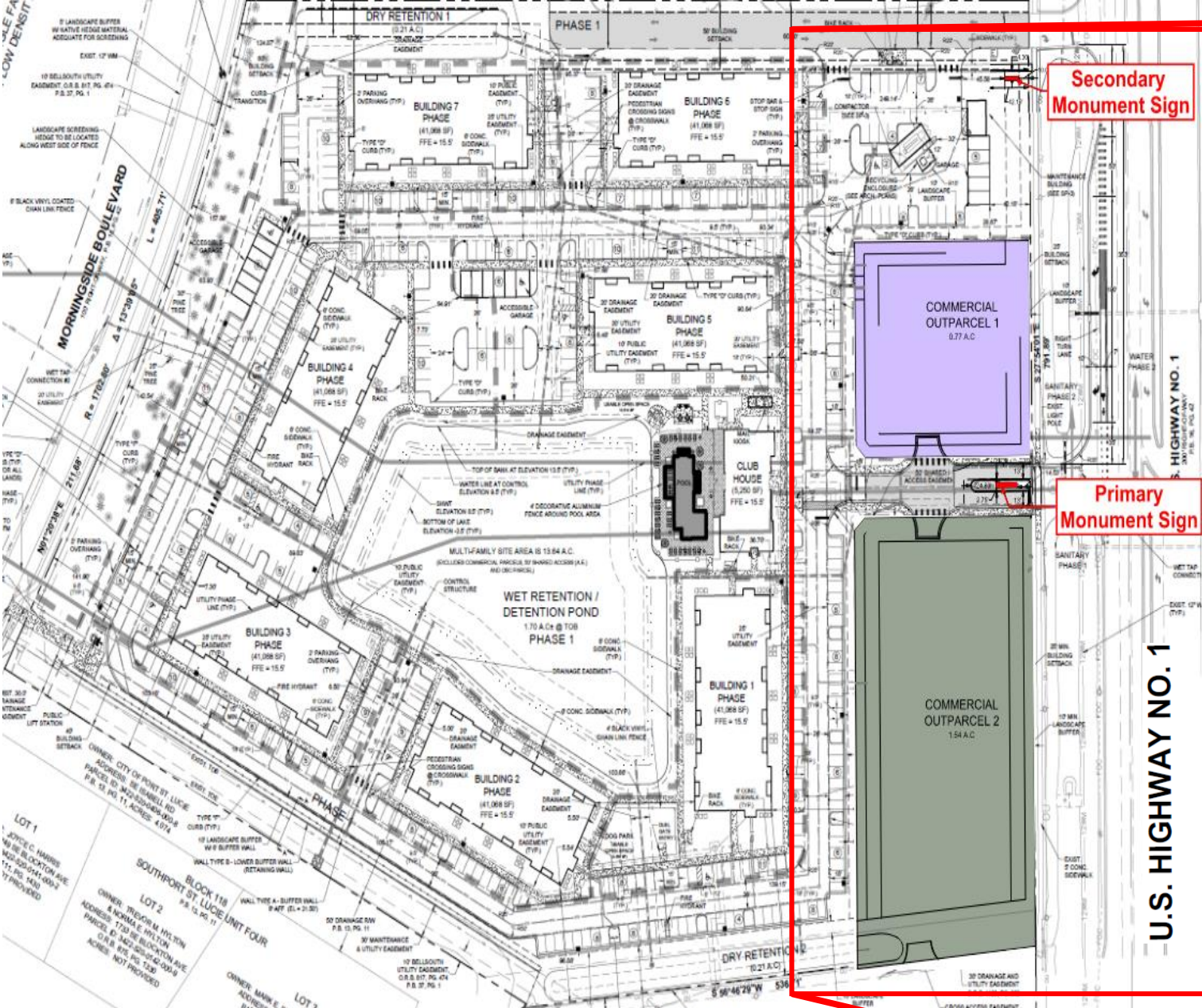
# Summary:

Both signs will be located at the entrances that will be located along US Highway #1. The north entrance will only serve the residential property. The center entrance will serve both the outparcels and the residential development behind them.

# Regulations Table

Type	Maximum Square footage	Maximum Height	Permitted number of signs	Identification Use
Primary Monument Sign	52.2 square feet	8 feet	1	Toscana Residential Development
Secondary Monument Sign	30 square feet	7 feet	1	Toscana Residential development and both commercial outparcels 1 and 2

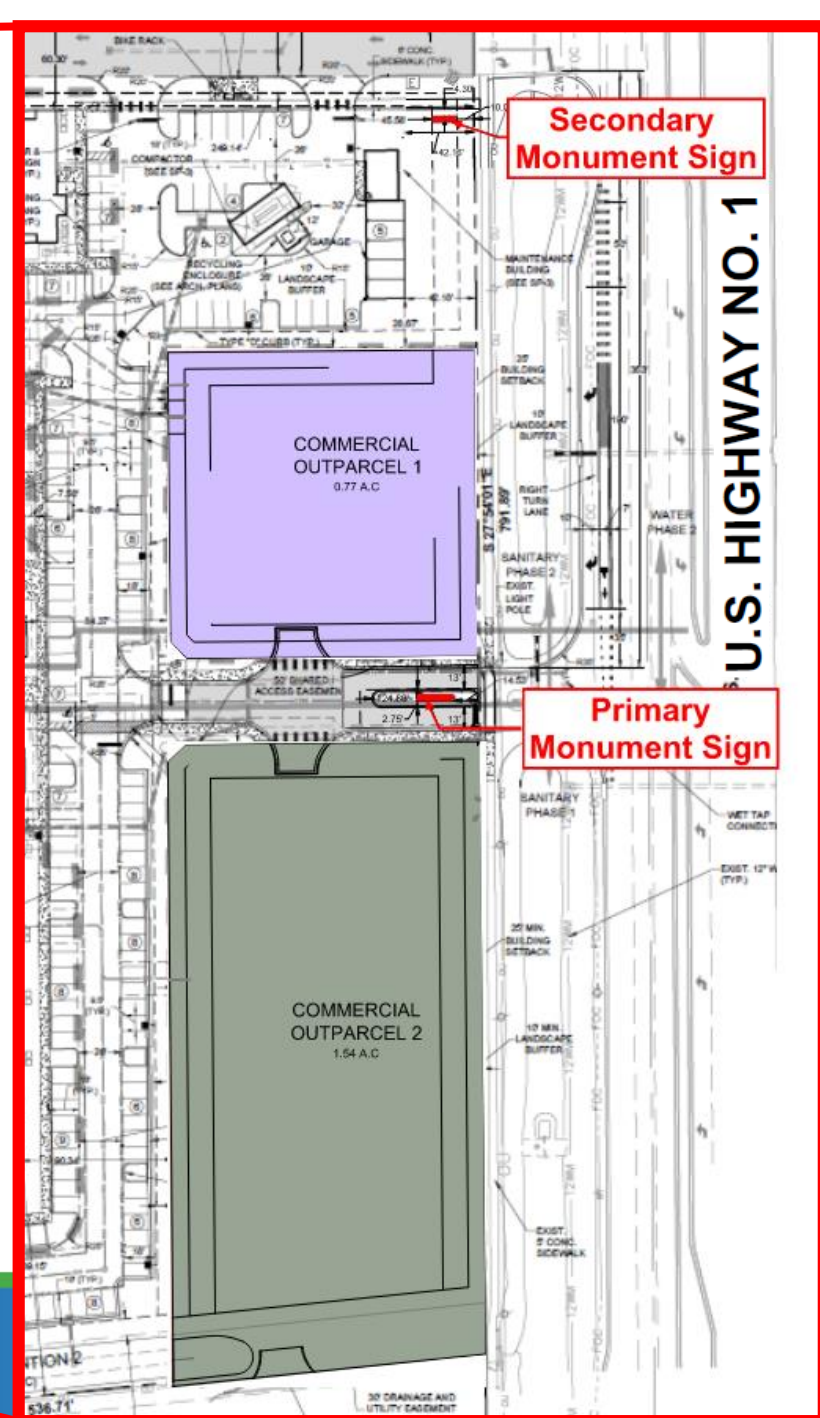




Secondary Monument Sign

Primary Monument Sign

U.S. HIGHWAY NO. 1

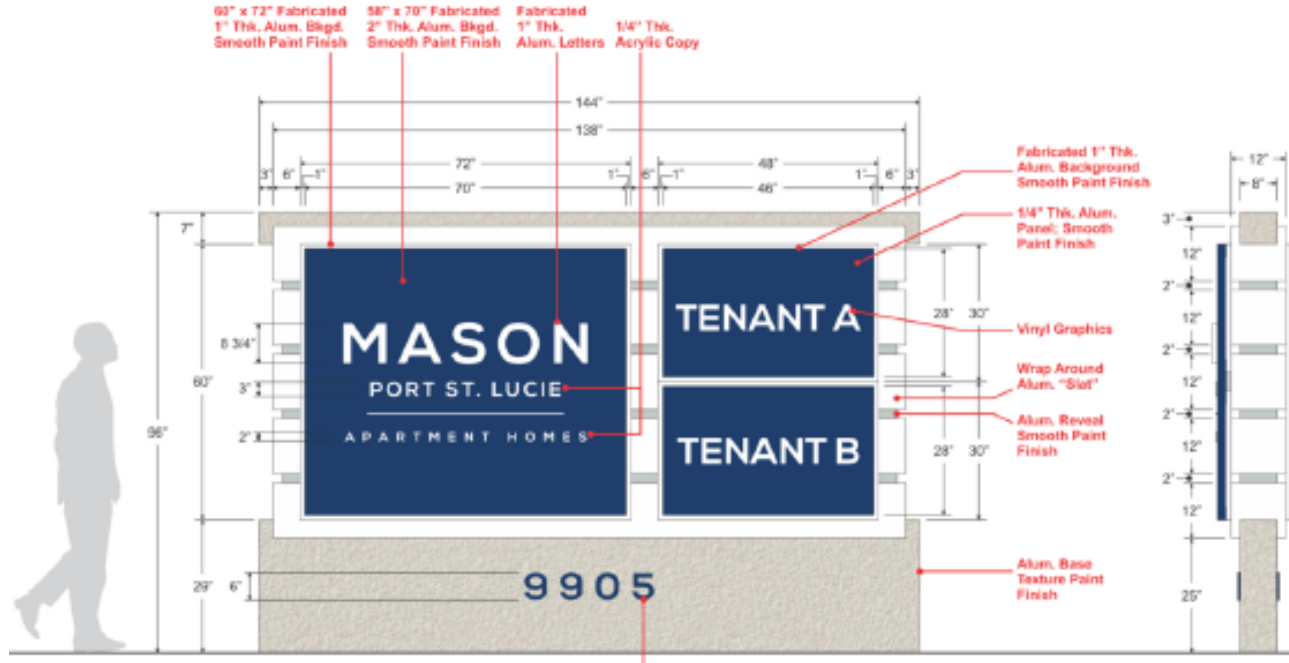


Secondary Monument Sign

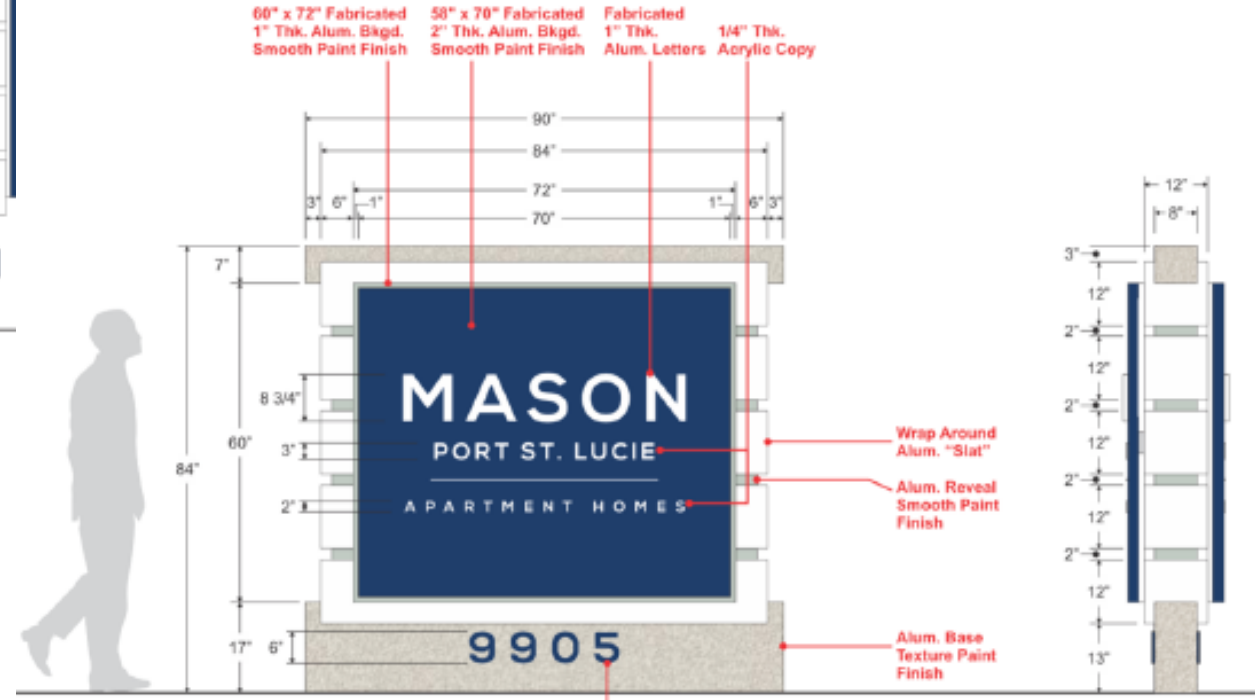
Primary Monument Sign

U.S. HIGHWAY NO. 1

## Primary Monument:



## Secondary Monument:



# Recommendation:

Staff does find the proposed amendment to be consistent with the direction and intent of the City's Land Development Regulations and recommends approval.

