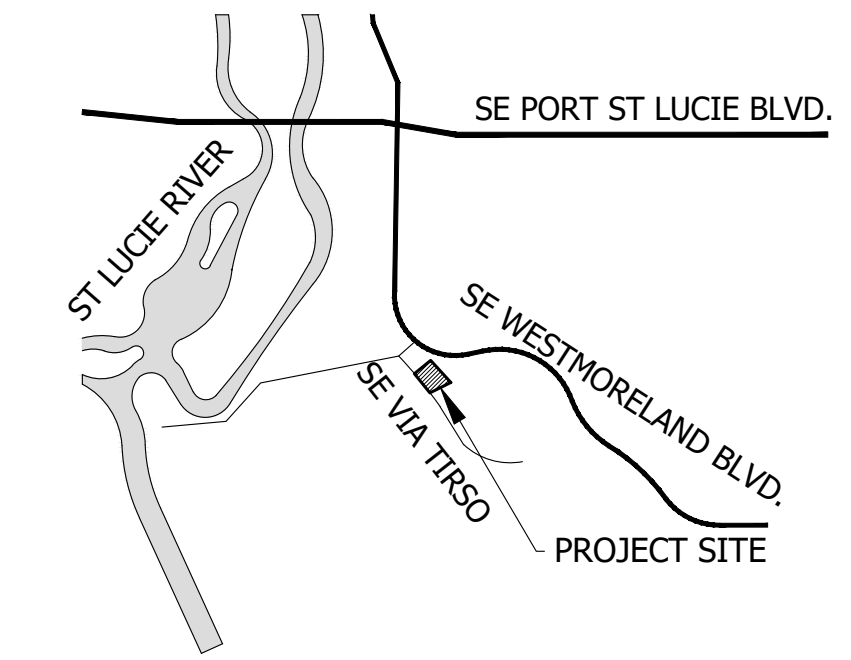
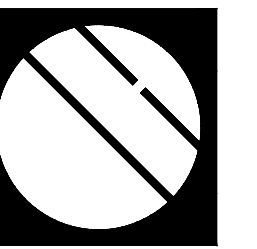


LOCATION MAP



NTS



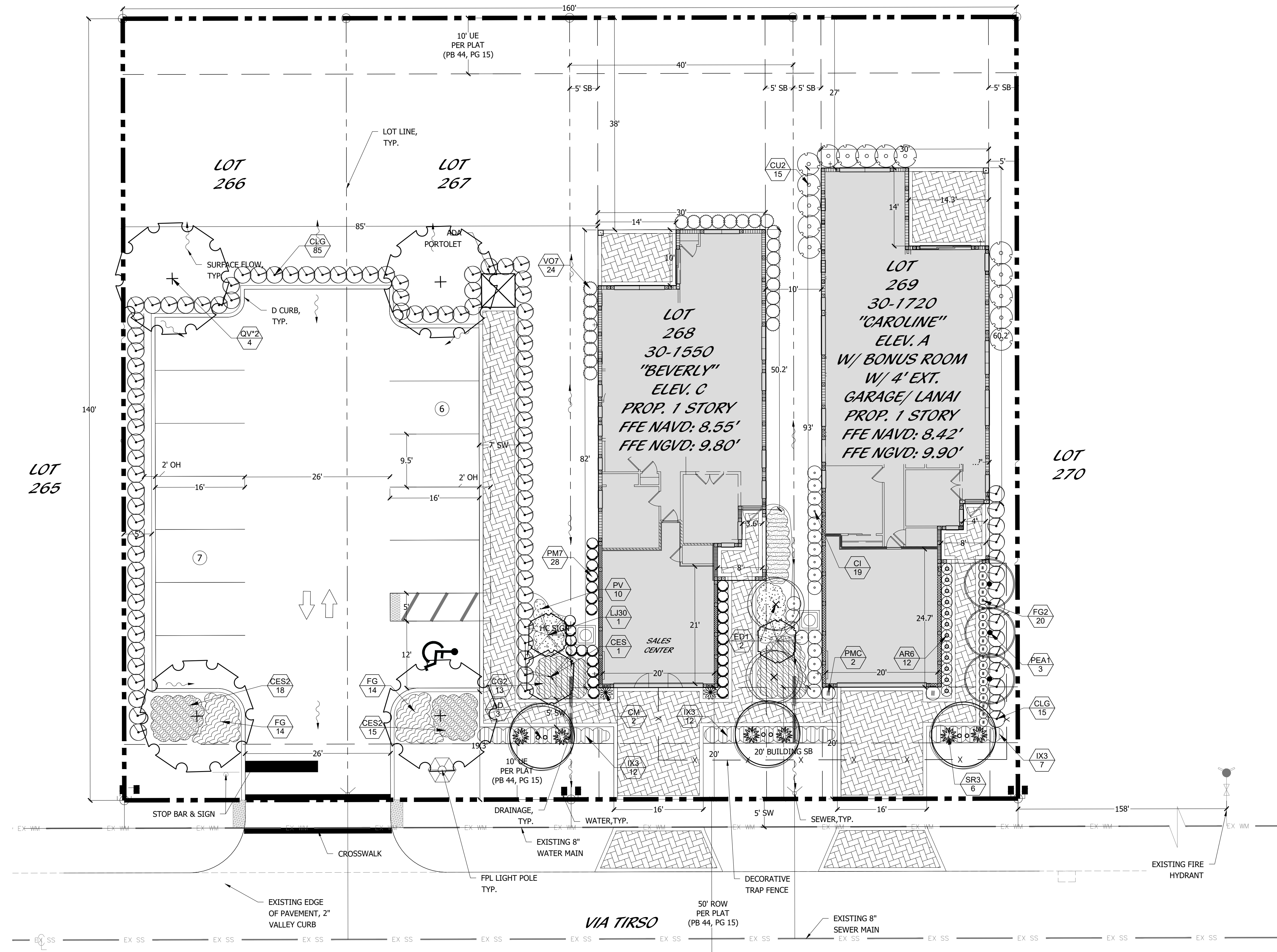
**Cotleur & Hearing**

Landscape Architects  
Land Planners  
Environmental Consultants

1934 Commerce Lane  
Suite 1  
Jupiter, Florida 33458  
561.747.6336 · Fax 747.1377  
www.cotleurhearing.com  
Lic# LC-C000239

**RIVELLA MODEL CENTER**

Port Saint Lucie, Florida



**PROJECT TEAM**

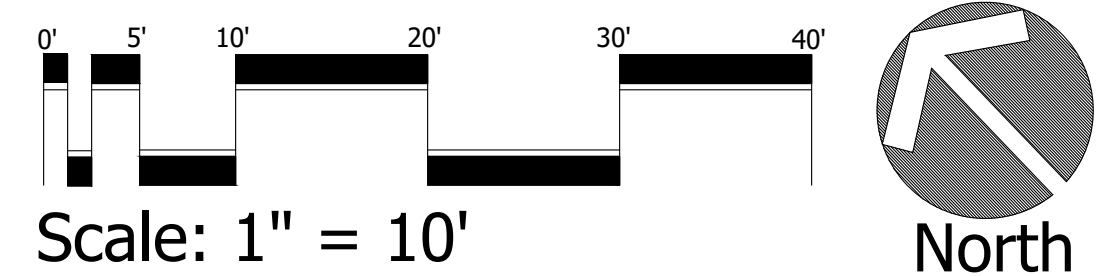
**OWNER/CLIENT:**  
KOLTER HOMES  
4807 PGA BOULEVARD  
PALM BEACH GARDENS, FL 33418  
561.682.9500

**ENGINEER:**  
CAULFIELD & WHEELER, INC.  
410 SE PORT ST. LUCIE BLVD  
PORT ST. LUCIE, FL 34984  
772.408.1920

**LANDSCAPE ARCHITECT/PLANNER:**  
COTLEUR & HEARING, INC.  
1934 COMMERCE LANE, SUITE 1  
JUPITER, FL 33458  
561.515.4450

**SURVEYOR:**  
CAULFIELD & WHEELER, INC.  
410 SE PORT ST. LUCIE BLVD  
PORT ST. LUCIE, FL 34984  
772.408.1920

PSLUSD #: 11-098-0005A  
PSL PROJECT #: 21-093  
**LANDSCAPE PLAN**



DESIGNED	LAH
DRAWN	LAH
APPROVED	DTS
JOB NUMBER	21-0404
DATE	04-21-21
REVISIONS	05-17-21
	07-06-21

