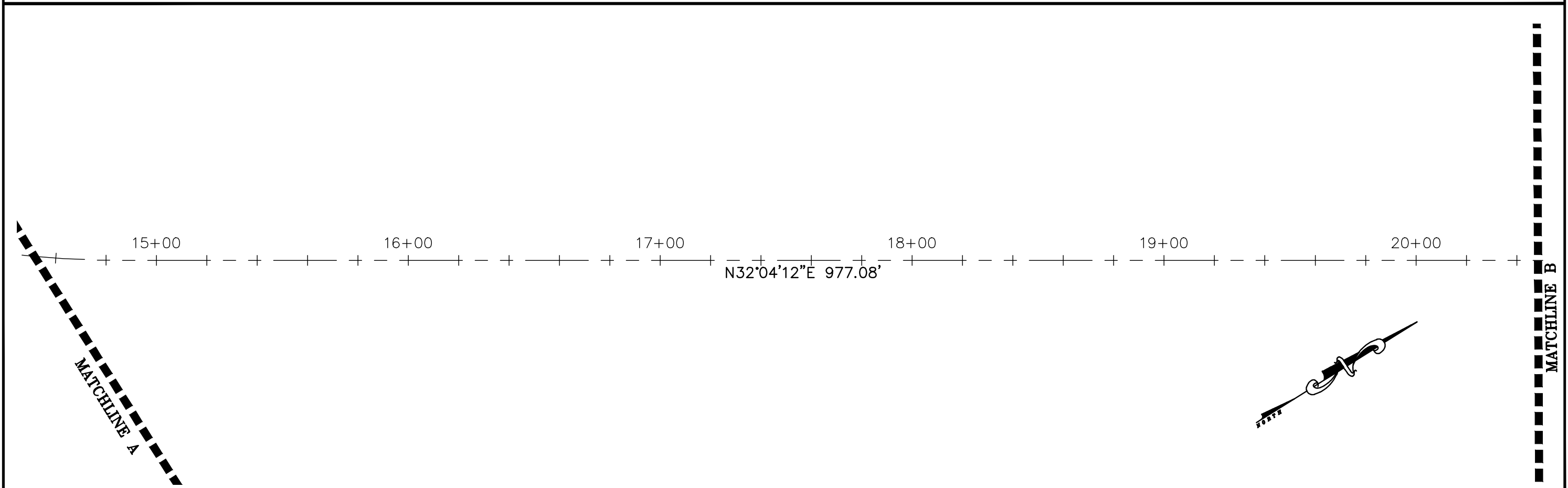
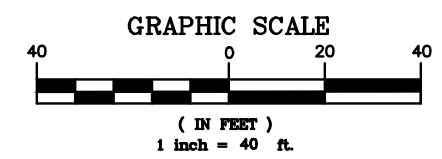
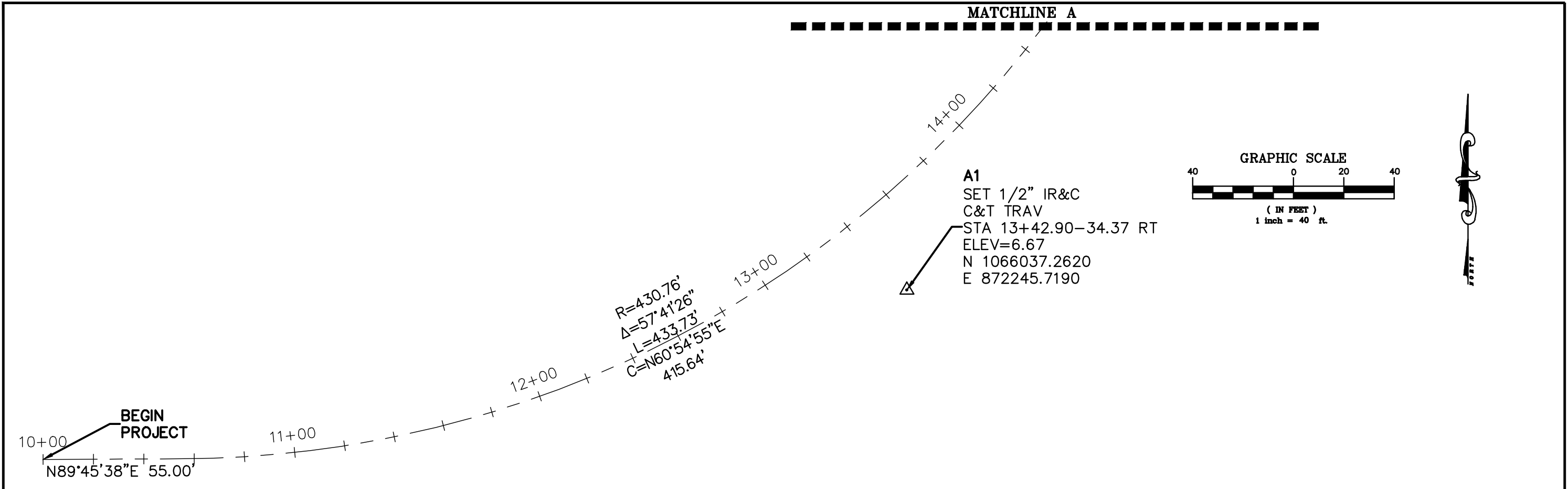


P:\Proj-2019\19-058 Floresta Drive Phase 1\_Survey\survey\19-058 project control.dwg 7/2/2019 10:25:24 AM



MATCHLINE B

REVISIONS					
DATE	BY	DESCRIPTION	DATE	BY	DESCRIPTION

C&T JOB NO. 19-058	
DESIGNED BY	DRAWN BY GLM 7-01-19
CHECKED BY	CHECKED BY TPK 7-02-19

AMERICAN CONSULTING ENGINEERS OF FLORIDA, LLC	
PROJECT NAME	FINANCIAL PROJECT ID
FLORESTA DRIVE PHASE 1	-----

**PROJECT NETWORK CONTROL**

SHEET NO.  
CTL-1

P:\Proj-2019\19-058 Floresta Drive Phase 1, Survey\survey\19-058 project control.dwg 7/2/2019 10:25:31 AM

MATCHLINE B

**A2**  
 SET 1/2" IR&C  
 C&T TRAV  
 STA 20+68.22-18.79 LT  
 ELEV=9.04  
 N 1066673.4260  
 E 872612.7400

21+00      22+00      23+00      24+00      25+00      26+00

N32°04'12"E 977.08'

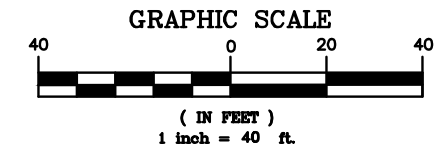
MATCHLINE C

MATCHLINE C

**A3**  
 SET 1/2" IR&C  
 C&T TRAV  
 STA 27+64.18-28.85 RT  
 ELEV=6.81  
 N 1067251.7670  
 E 873006.2620

R=2120.00'  
 $\Delta=31^{\circ}50'20''$   
 L=1178.07'  
 C=N16°09'02"E  
 1162.97'

27+00      28+00      29+00      30+00      31+00      32+00

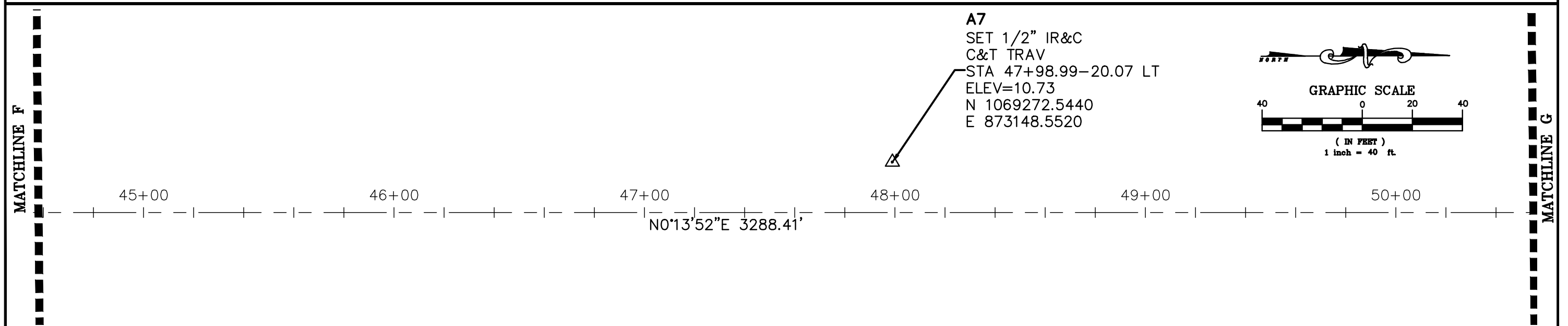
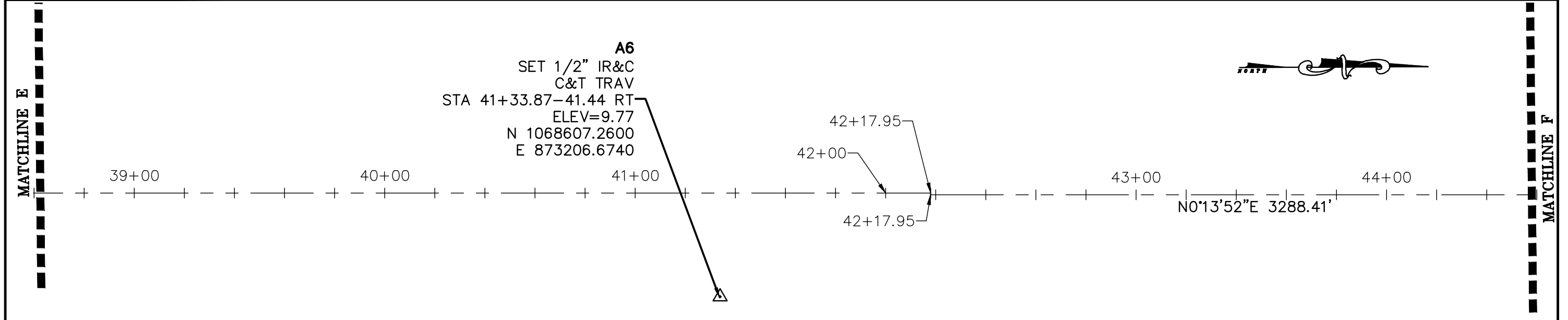
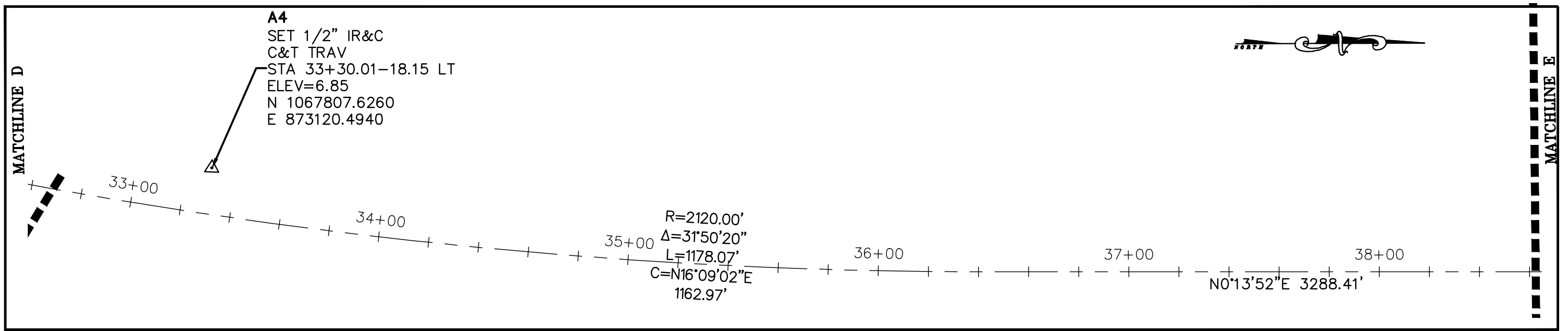


MATCHLINE D

REVISIONS						C&T JOB NO. 19-058		AMERICAN CONSULTING ENGINEERS OF FLORIDA, LLC		PROJECT NETWORK CONTROL	SHEET NO.
DATE	BY	DESCRIPTION	DATE	BY	DESCRIPTION	DESIGNED BY	DRAWN BY	PROJECT NAME	FINANCIAL PROJECT ID		
								FLORESTA DRIVE PHASE 1			

**CULPEPPER & TERPENING, INC**  
 CONSULTING ENGINEERS | LAND SURVEYORS  
 2980 SOUTH 25th STREET • FORT PILLSBURY, FLORIDA 34981  
 PHONE 772-464-3337 • FAX 772-464-9997 • www.cti-cem.com  
 STATE OF FLORIDA BOARD OF PROFESSIONAL ENGINEERS AUTHORIZATION NO. 4286

F:\Proj-2019\19-058 Floresta Drive Phase 1, Survey\survey\19-058 project control.dwg 7/2/2019 10:25:36 AM



REVISIONS					
DATE	BY	DESCRIPTION	DATE	BY	DESCRIPTION

C&T JOB NO. 19-058	
DESIGNED BY	DRAWN BY
CHECKED BY	CHECKED BY

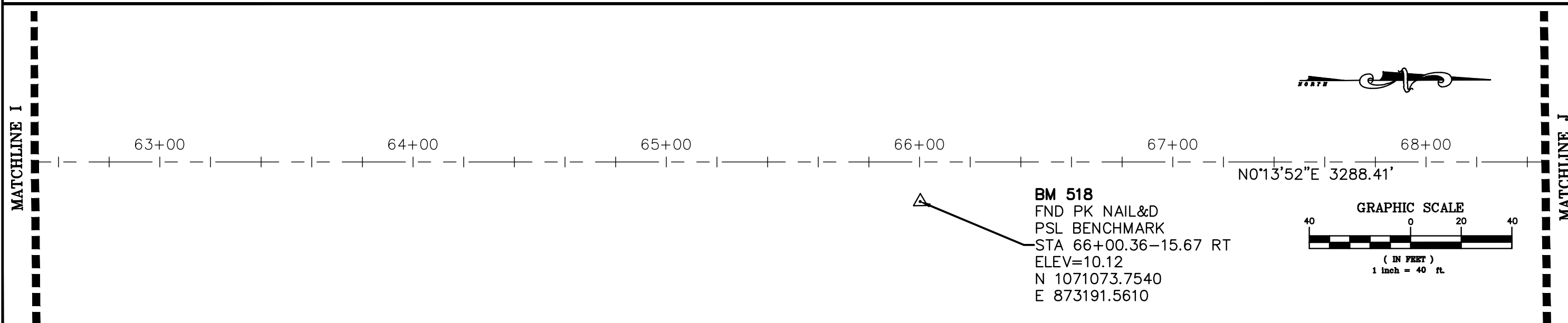
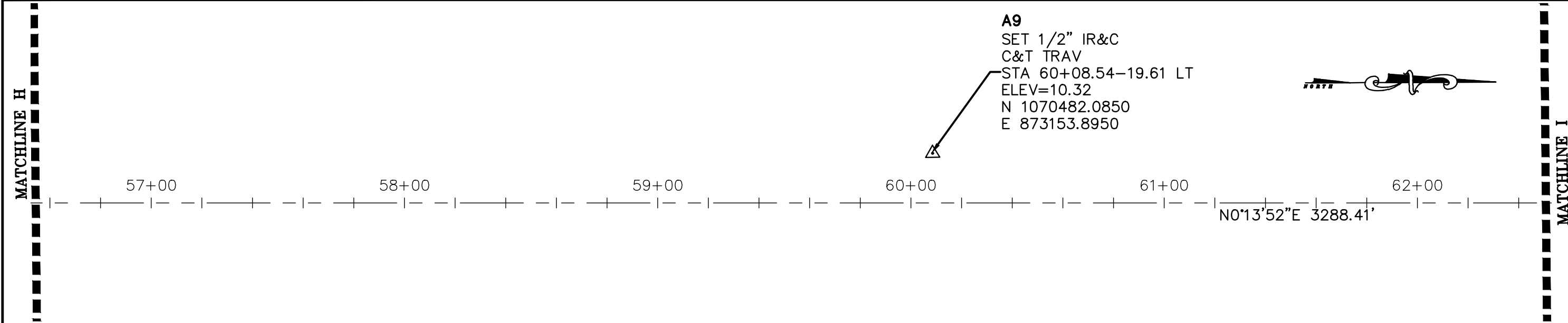
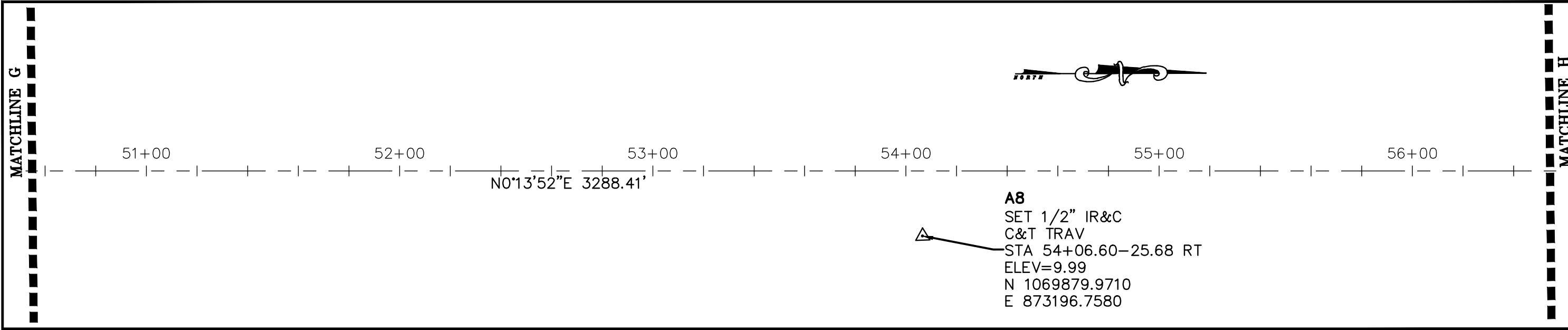
**CULPEPPER & TERPENING, INC**  
 CONSULTING ENGINEERS | LAND SURVEYORS  
 2980 SOUTH 25th STREET • FORT PIERCE, FLORIDA 34981  
 PHONE: 772-464-3337 • FAX: 772-464-9497 • www.ct-eng.com  
 STATE OF FLORIDA BOARD OF PROFESSIONAL ENGINEERS AUTHORIZATION NO. 4286

AMERICAN CONSULTING ENGINEERS OF FLORIDA, LLC	
PROJECT NAME	FINANCIAL PROJECT ID
FLORESTA DRIVE PHASE 1	-----

**PROJECT NETWORK CONTROL**

SHEET NO.  
 CTL-3

P:\Proj-2019\19-058 Floresta Drive Phase 1\_Survey\survey\19-058 project control.dwg 7/2/2019 10:25:42 AM



REVISIONS					
DATE	BY	DESCRIPTION	DATE	BY	DESCRIPTION

C&T JOB NO. 19-058	
DESIGNED BY	DRAWN BY
CHECKED BY	CHECKED BY

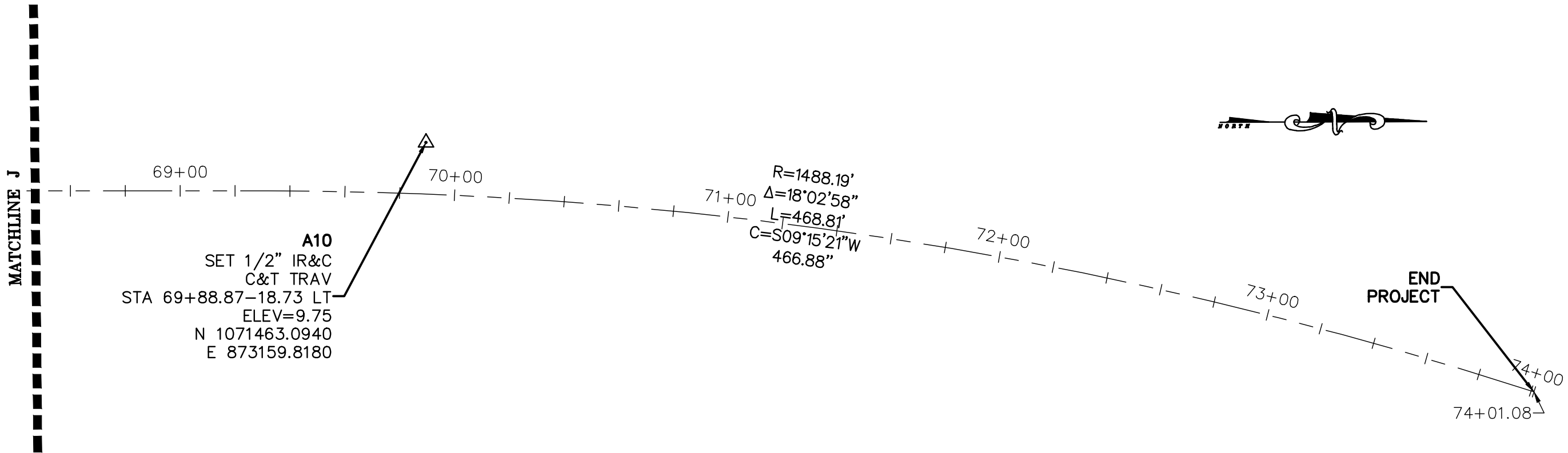
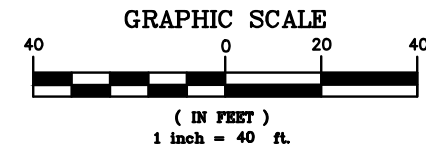
**CULPEPPER & TERPENING, INC.**  
 CONSULTING ENGINEERS | LAND SURVEYORS  
 2980 SOUTH 25th STREET • FORT PIERCE, FLORIDA 34981  
 PHONE: 772-464-3837 • FAX: 772-464-9497 • www.ct-eng.com  
 STATE OF FLORIDA BOARD OF PROFESSIONAL ENGINEERS AUTHORIZATION NO. 4286

**AMERICAN CONSULTING ENGINEERS OF FLORIDA, LLC**

PROJECT NAME	FINANCIAL PROJECT ID
FLORESTA DRIVE PHASE 1	-----

**PROJECT NETWORK CONTROL**

SHEET NO.  
CTL-4



F:\Proj-2019\19-058 Floresta Drive Phase 1\_Survey\survey\19-058 project control.dwg 7/2/2019 10:25:45 AM

REVISIONS						C&T JOB NO. 19-058		AMERICAN CONSULTING ENGINEERS OF FLORIDA, LLC		PROJECT NETWORK CONTROL	SHEET NO.
DATE	BY	DESCRIPTION	DATE	BY	DESCRIPTION	DESIGNED BY	DRAWN BY	PROJECT NAME	FINANCIAL PROJECT ID		
						CHECKED BY	CHECKED BY	FLORESTA DRIVE PHASE 1			

**CULPEPPER & TERPENING, INC.**  
CONSULTING ENGINEERS | LAND SURVEYORS  
2980 SOUTH 25th STREET • FORT PIERCE, FLORIDA 34981  
PHONE 772-464-3537 • FAX 772-464-9497 • www.ct-eng.com  
STATE OF FLORIDA BOARD OF PROFESSIONAL ENGINEERS AUTHORIZATION NO. 4286