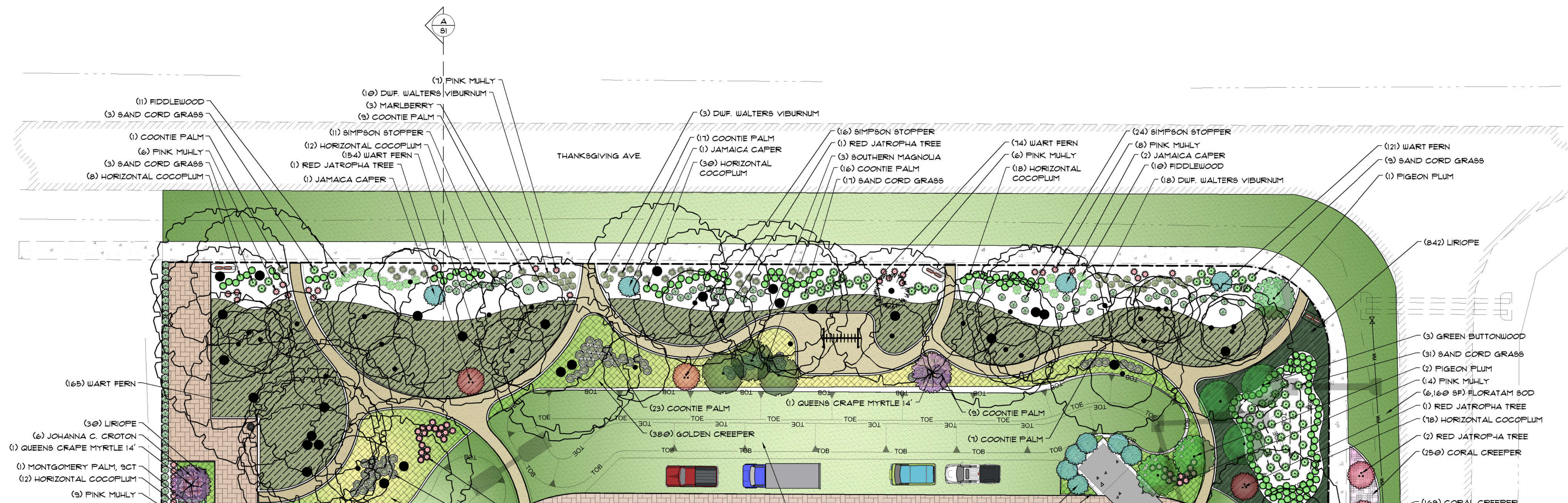


A NORTH BUFFER SECTION AT TIME OF PLANTING SCALE: 1/4" = 1'-0"



NORTH BUFFER PLAN VIEW SCALE: 1/16" = 1'-0"

Conceptual Landscape Plan
PORT ST LUCIE INTERMODAL
Port St. Lucie, Florida

Please note: This plan is a professional interpretation of existing and proposed site elements based on multiple sources of information. These sources may include: aerial imagery, site observations, photographs and site plans. At times, these supporting documents are inaccurate or approximate at best and the contractor's responsibility to verify all measurements and quantities prior to commencing work.

