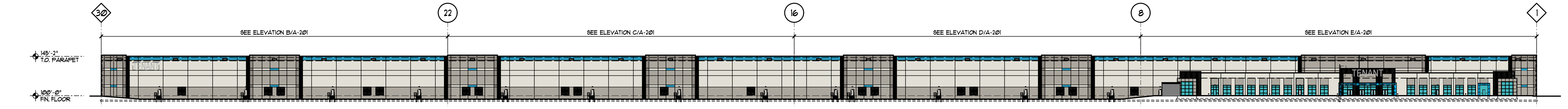


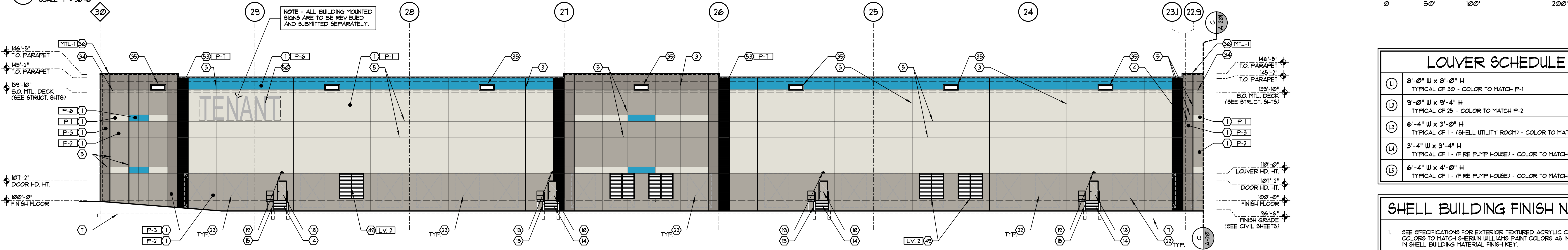
ISSUE	REVISION	DATE
ZONING SET		
PRICING SET		APR. 16, 2021
PERMIT SET		APR. 16, 2021

**BUILDING ELEVATIONS AND NOTES**

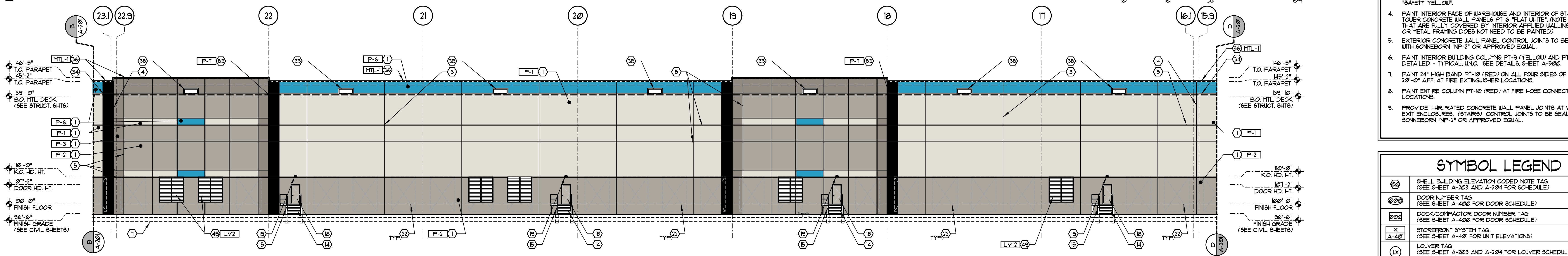
FAA 2023.03



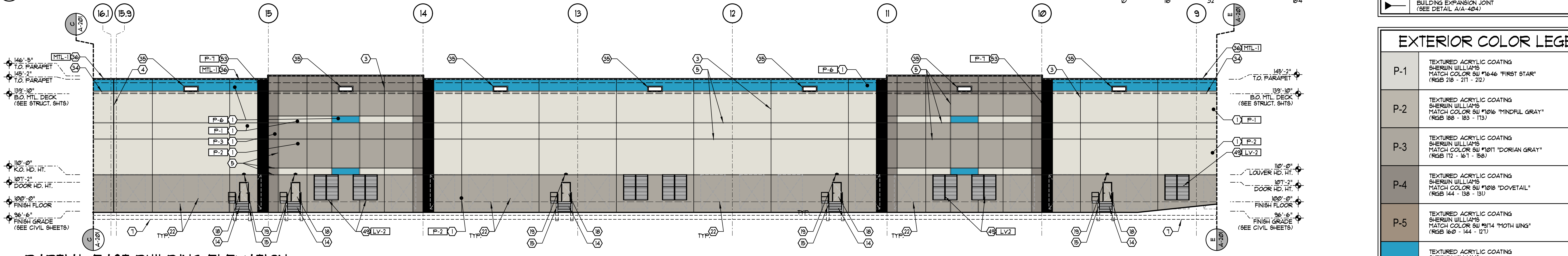
**A OVERALL EAST BUILDING ELEVATION**  
 SCALE 1/8" = 1'-0"



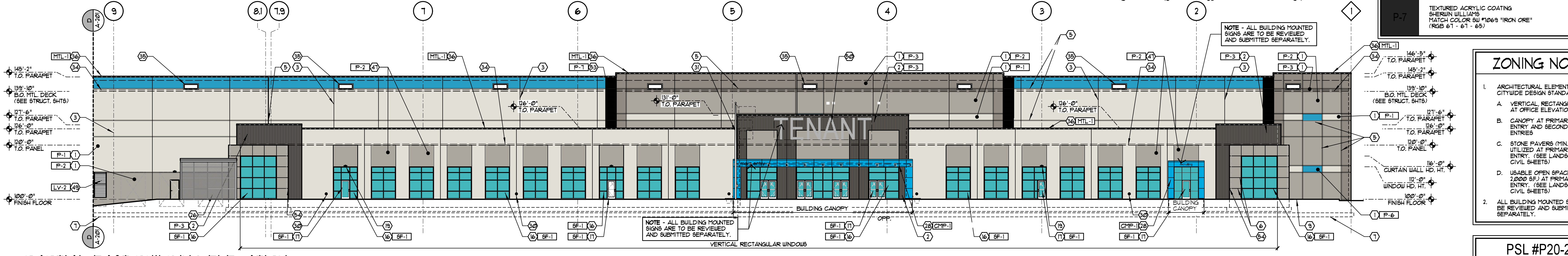
**B PARTIAL EAST BUILDING ELEVATION**  
 SCALE 1/16" = 1'-0"



**C PARTIAL EAST BUILDING ELEVATION**  
 SCALE 1/16" = 1'-0"



**D PARTIAL EAST BUILDING ELEVATION**  
 SCALE 1/16" = 1'-0"



**E PARTIAL EAST BUILDING ELEVATION**  
 SCALE 1/16" = 1'-0"

**LOUVER SCHEDULE**

1	8'-0" W x 8'-0" H TYPICAL OF 30 - COLOR TO MATCH P-1
2	9'-0" W x 9'-4" H TYPICAL OF 25 - COLOR TO MATCH P-2
3	6'-4" W x 3'-0" H TYPICAL OF 1 - (SHELL UTILITY ROOM) - COLOR TO MATCH P-1
4	3'-4" W x 3'-4" H TYPICAL OF 1 - (FIRE PUMP HOUSE) - COLOR TO MATCH P-1
5	6'-4" W x 4'-0" H TYPICAL OF 1 - (FIRE PUMP HOUSE) - COLOR TO MATCH P-1

- SHELL BUILDING FINISH NOTES**
- SEE SPECIFICATIONS FOR EXTERIOR TEXTURED ACRYLIC COATING. COLORS TO MATCH SHERWIN WILLIAMS PAINT COLORS AS INDICATED IN SHELL BUILDING MATERIAL FINISH KEY.
  - PAINT EXTERIOR HOLLOW METAL DOORS & FRAMES SEMI-GLOSS, COLOR TO MATCH P-2.
  - PAINT CONCRETE FILLED STEEL BOLLARDS SEMI-GLOSS P-1 "SAFETY YELLOW".
  - PAINT INTERIOR FACE OF WAREHOUSE WALL PANELS PT-6 "FLAT WHITE". (NOTE: WALLS THAT ARE FULLY COVERED BY INTERIOR APPLIED WALL INSULATION OR METAL FRAMING DOES NOT NEED TO BE PAINTED).
  - EXTERIOR CONCRETE WALL PANEL CONTROL JOINTS TO BE SEALED WITH SONNEBORN "NP-2" OR APPROVED EQUAL.
  - PAINT INTERIOR BUILDING COLUMNS PT-5 (YELLOW) AND PT-11 (WHITE) AS DETAILED - TYPICAL, UNCL. SEE DETAILS, SHEET A-500.
  - PAINT 24" HIGH BAND PT-10 (RED) ON ALL FOUR SIDES OF COLUMN AT 20'-0" ABS. AT FIRE EXTINGUISHER LOCATIONS.
  - PAINT ENTIRE COLUMN PT-10 (RED) AT FIRE HOSE CONNECTION LOCATIONS.
  - PROVIDE 1-HR. RATED CONCRETE WALL PANEL JOINTS AT VERTICAL EXIT ENCLOSURES. (STAIRS) CONTROL JOINTS TO BE SEALED WITH SONNEBORN "NP-2" OR APPROVED EQUAL.

**SYMBOL LEGEND**

(Note symbol)	SHELL BUILDING ELEVATION CODED NOTE TAG (SEE SHEET A-203 AND A-204 FOR SCHEDULE)
(Door symbol)	DOOR NUMBER TAG (SEE SHEET A-400 FOR DOOR SCHEDULE)
(Door/door symbol)	DOOR/DOORPART DOOR NUMBER TAG (SEE SHEET A-400 FOR DOOR SCHEDULE)
(X/A:400 symbol)	STOREFRONT SYSTEM TAG (SEE SHEET A-401 FOR UNIT ELEVATIONS)
(L symbol)	LOUVER TAG (SEE SHEET A-203 AND A-204 FOR LOUVER SCHEDULE AND SHEET A-402 FOR TYPICAL ELEVATIONS)
(Material symbol)	MATERIAL / FINISH TAG (SEE SHEET A-203 AND A-204 FOR MATERIAL FINISH KEY)
(Arrow symbol)	BUILDING EXPANSION JOINT (SEE DETAIL A/A-404)

**EXTERIOR COLOR LEGEND**

P-1	TEXTURED ACRYLIC COATING SHERWIN WILLIAMS MATCH COLOR SW #1646 "FIRST STAR" (RGB 218 - 211 - 212)
P-2	TEXTURED ACRYLIC COATING SHERWIN WILLIAMS MATCH COLOR SW #1216 "MINDFUL GRAY" (RGB 188 - 193 - 113)
P-3	TEXTURED ACRYLIC COATING SHERWIN WILLIAMS MATCH COLOR SW #1011 "DORIAN GRAY" (RGB 172 - 161 - 158)
P-4	TEXTURED ACRYLIC COATING SHERWIN WILLIAMS MATCH COLOR SW #1218 "DOVETAIL" (RGB 144 - 138 - 131)
P-5	TEXTURED ACRYLIC COATING SHERWIN WILLIAMS MATCH COLOR SW #314 "MOTH WINGS" (RGB 160 - 144 - 121)
P-6	TEXTURED ACRYLIC COATING SHERWIN WILLIAMS MATCH COLOR SW #1298 "MAJOR BLUE" (RGB 40 - 158 - 196)
P-7	TEXTURED ACRYLIC COATING SHERWIN WILLIAMS MATCH COLOR SW #1063 "IRON ORE" (RGB 61 - 61 - 65)

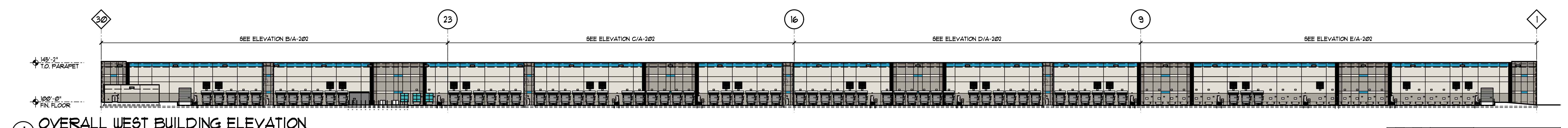
- ZONING NOTES**
- ARCHITECTURAL ELEMENTS PER CITYWIDE DESIGN STANDARDS
    - VERTICAL, RECTANGULAR WINDOWS AT OFFICE ELEVATIONS
    - CANOPY AT PRIMARY BUILDING ENTRY AND SECONDARY OFFICE ENTRIES
    - STONE PAVERS (MIN. OF 350 SF) UTILIZED AT PRIMARY BUILDING ENTRY. (SEE LANDSCAPE AND CIVIL SHEETS)
    - USABLE OPEN SPACE (MIN. OF 2000 SF) AT PRIMARY BUILDING ENTRY. (SEE LANDSCAPE AND CIVIL SHEETS)
  - ALL BUILDING MOUNTED SIGNS ARE TO BE REVIEWED AND SUBMITTED SEPARATELY.

PSL #P20-249

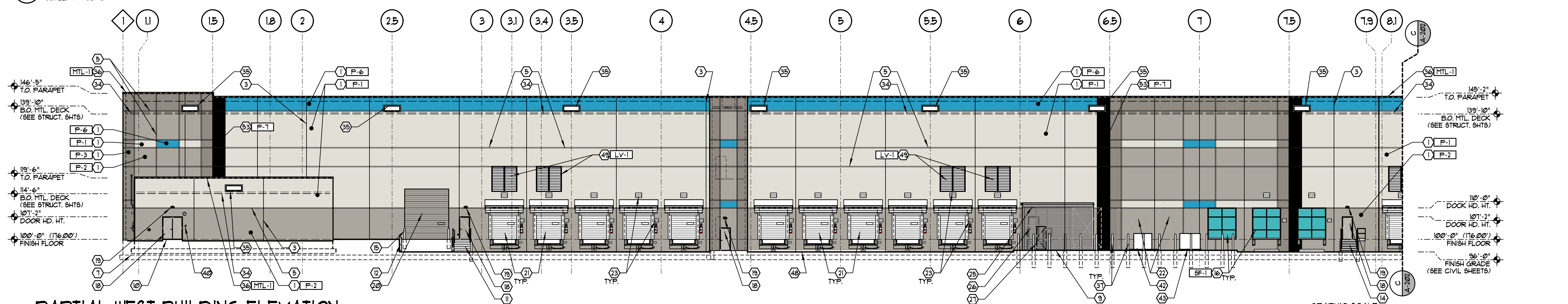
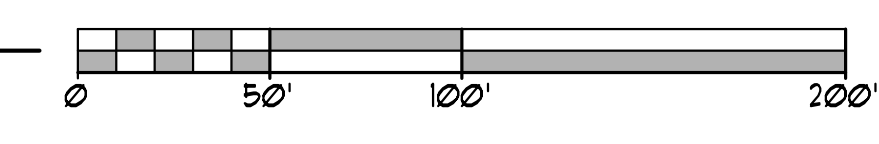
ISSUE	REVISION	DATE
ZONING SET		
PRICING SET		APR. 16, 2021
PERMIT SET		APR. 16, 2021

**BUILDING ELEVATIONS WEST**  
FAA: 210339.00

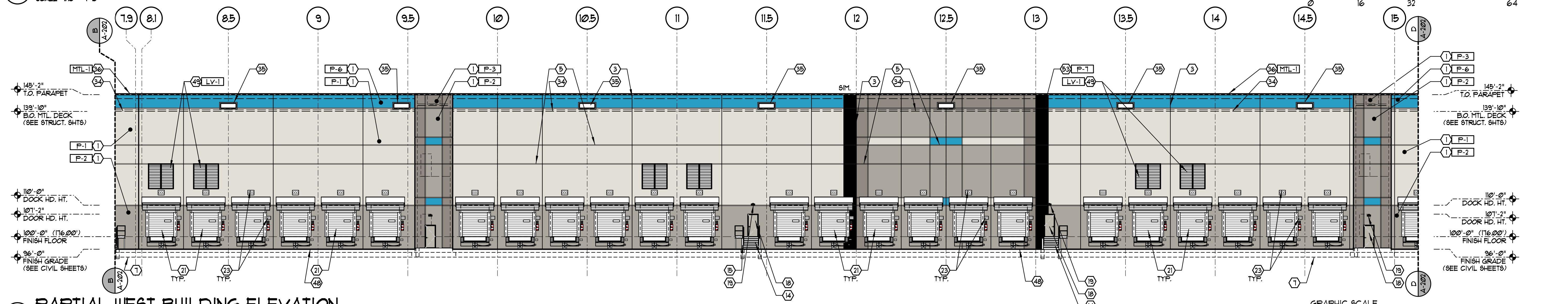
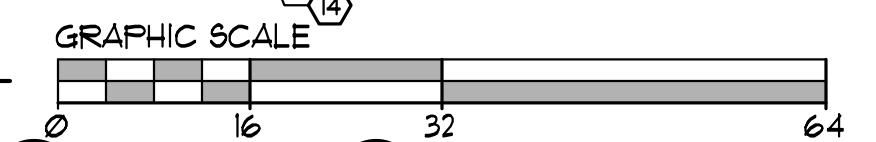
**A-202**  
PBI3



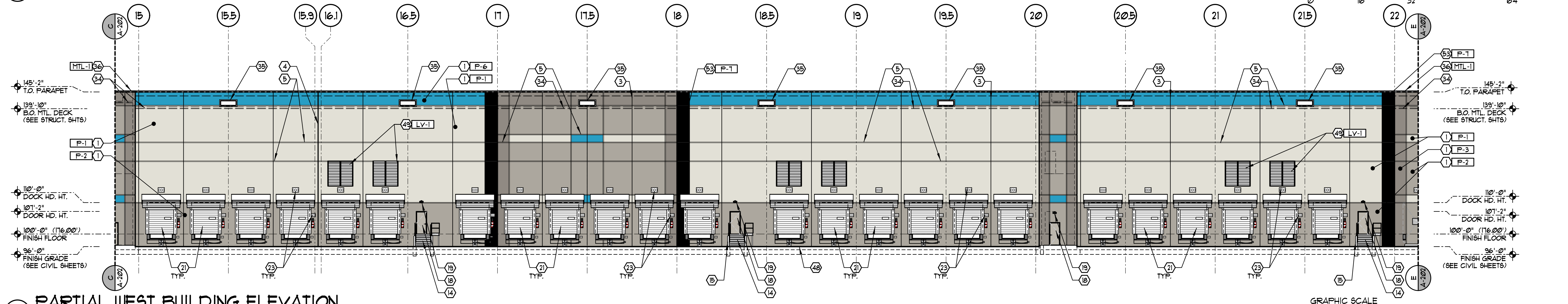
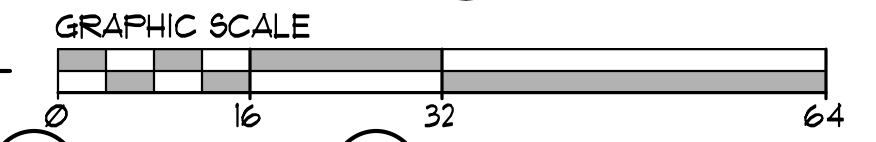
**(A) OVERALL WEST BUILDING ELEVATION**  
SCALE 1" = 50'-0"



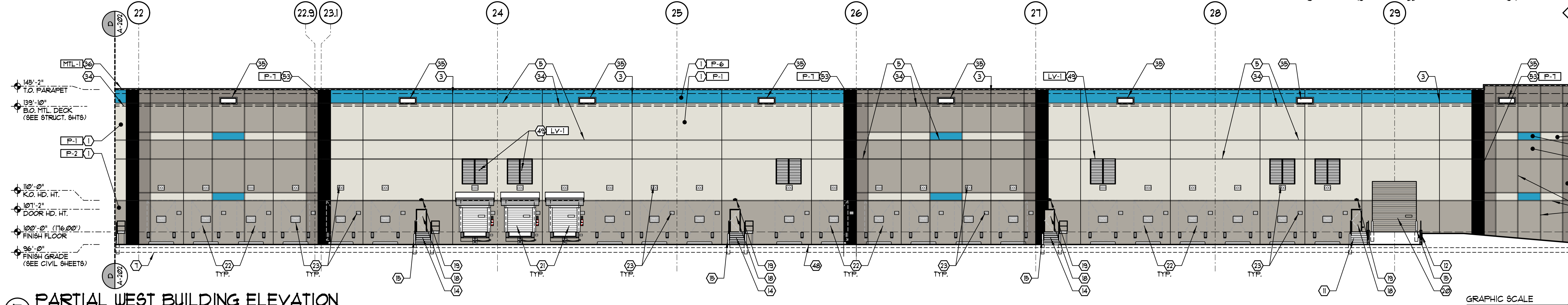
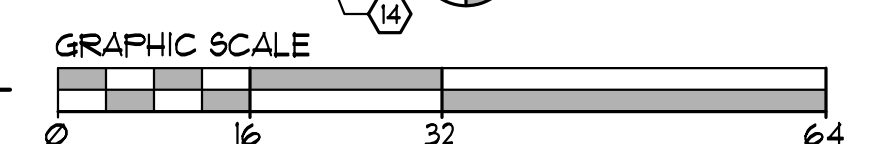
**(B) PARTIAL WEST BUILDING ELEVATION**  
SCALE 1/8" = 1'-0"



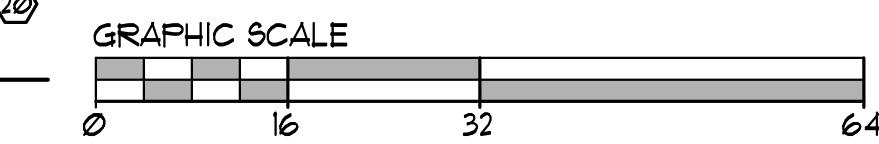
**(C) PARTIAL WEST BUILDING ELEVATION**  
SCALE 1/8" = 1'-0"



**(D) PARTIAL WEST BUILDING ELEVATION**  
SCALE 1/8" = 1'-0"



**(E) PARTIAL WEST BUILDING ELEVATION**  
SCALE 1/8" = 1'-0"



**LOUVER SCHEDULE**

①	8'-0" W x 8'-0" H TYPICAL OF 30 - COLOR TO MATCH P-1
②	9'-0" W x 9'-4" H TYPICAL OF 25 - COLOR TO MATCH P-2
③	6'-4" W x 3'-0" H TYPICAL OF 1 - (SHELL UTILITY ROOM) - COLOR TO MATCH P-1
④	3'-4" W x 3'-4" H TYPICAL OF 1 - (FIRE PUMP HOUSE) - COLOR TO MATCH P-1
⑤	6'-4" W x 4'-0" H TYPICAL OF 1 - (FIRE PUMP HOUSE) - COLOR TO MATCH P-1

- SHELL BUILDING FINISH NOTES**
- SEE SPECIFICATIONS FOR EXTERIOR TEXTURED ACRYLIC COATING. COLORS TO MATCH SHERWIN WILLIAMS AND PAINT COLORS AS INDICATED IN SHELL BUILDING MATERIAL FINISH KEY.
  - PAINT EXTERIOR HOLLOW METAL DOORS 4 FRAMES SEMI-GLOSS, COLOR TO MATCH P-2.
  - PAINT CONCRETE FILLED STEEL BOLLARDS SEMI-GLOSS P-1 "SAFETY YELLOW".
  - PAINT INTERIOR FACE OF WAREHOUSE AND INTERIOR OF STAIR TOWER CONCRETE WALL PANELS FF-16 "FLAT WHITE" (NOTE: WALLS THAT ARE FULLY COVERED BY INTERIOR APPLIED WALL INSULATION OR METAL FRAMING DOES NOT NEED TO BE PAINTED).
  - EXTERIOR CONCRETE WALL PANEL CONTROL JOINTS TO BE SEALED WITH SONNEBORN "NP-2" OR APPROVED EQUAL.
  - PAINT INTERIOR BUILDING COLUMNS PT-9 (YELLOW) AND PT-11 (WHITE) AS DETAILED - TYPICAL, UNO. SEE DETAILS, SHEET A-500.
  - PAINT 2" HIGH BAND PT-10 (RED) ON ALL FOUR SIDES OF COLUMN AT 20'-0" AFF. AT FIRE EXTINGUISHER LOCATIONS.
  - PAINT ENTIRE COLUMN PT-10 (RED) AT FIRE HOSE CONNECTION LOCATIONS.
  - PROVIDE 1-HR. RATED CONCRETE WALL PANEL JOINTS AT VERTICAL EXIT ENCLOSURES. (STAIRS) CONTROL JOINTS TO BE SEALED WITH SONNEBORN "NP-2" OR APPROVED EQUAL.

**SYMBOL LEGEND**

④	SHELL BUILDING ELEVATION CODED NOTE TAG (SEE SHEET A-203 AND A-204 FOR SCHEDULE)
②	DOOR NUMBER TAG (SEE SHEET A-400 FOR DOOR SCHEDULE)
②	DOCK/COMPACTOR DOOR NUMBER TAG (SEE SHEET A-400 FOR DOOR SCHEDULE)
X	STOREFRONT SYSTEM TAG (SEE SHEET A-401 FOR UNIT ELEVATIONS)
L	LOUVER TAG (SEE SHEET A-203 AND A-204 FOR LOUVER SCHEDULE AND SHEET A-402 FOR TYPICAL ELEVATIONS)
□	MATERIAL / FINISH TAG (SEE SHEET A-203 AND A-204 FOR MATERIAL FINISH KEY)
▶	BUILDING EXPANSION JOINT (SEE DETAIL A/A-404)

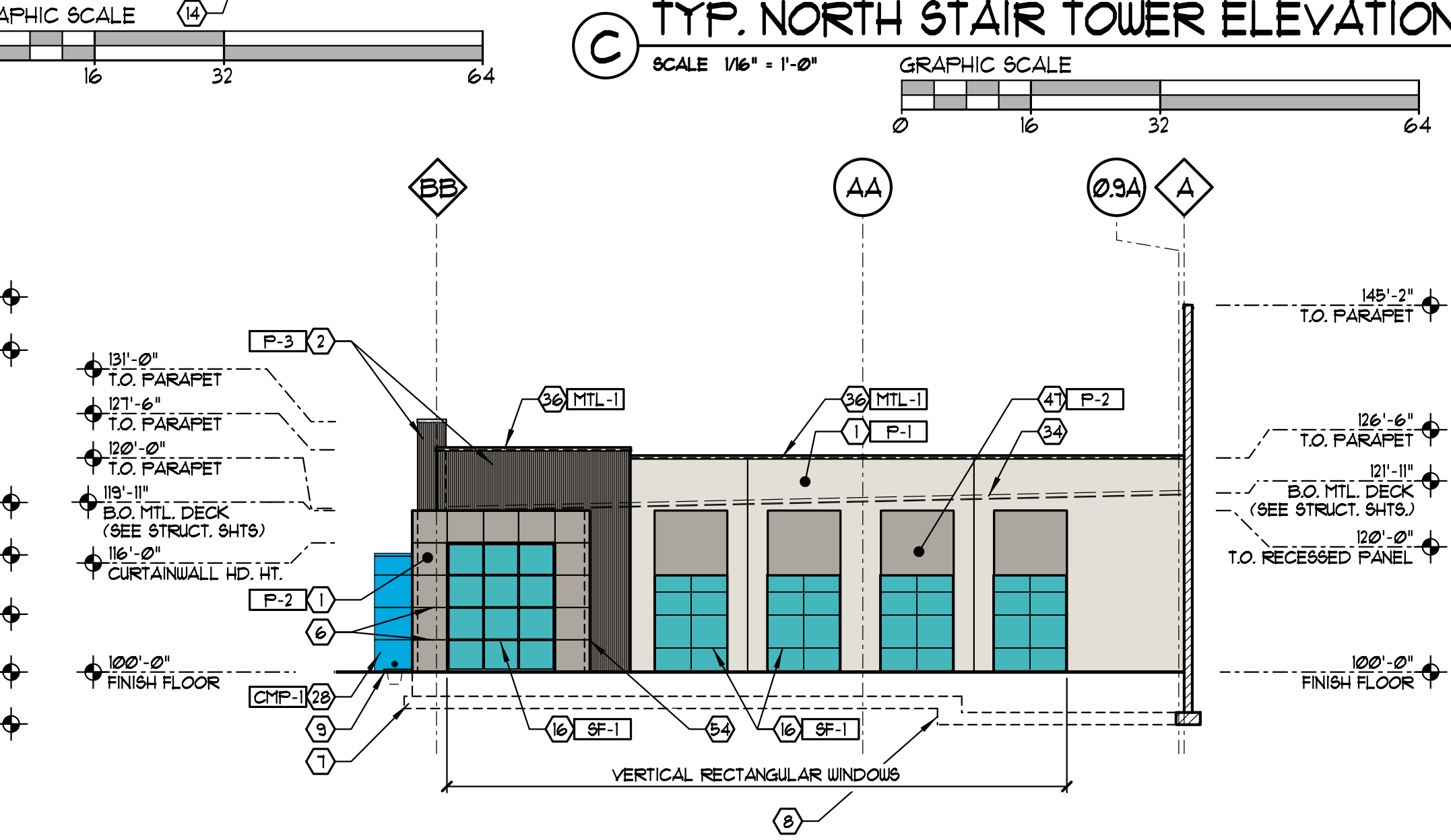
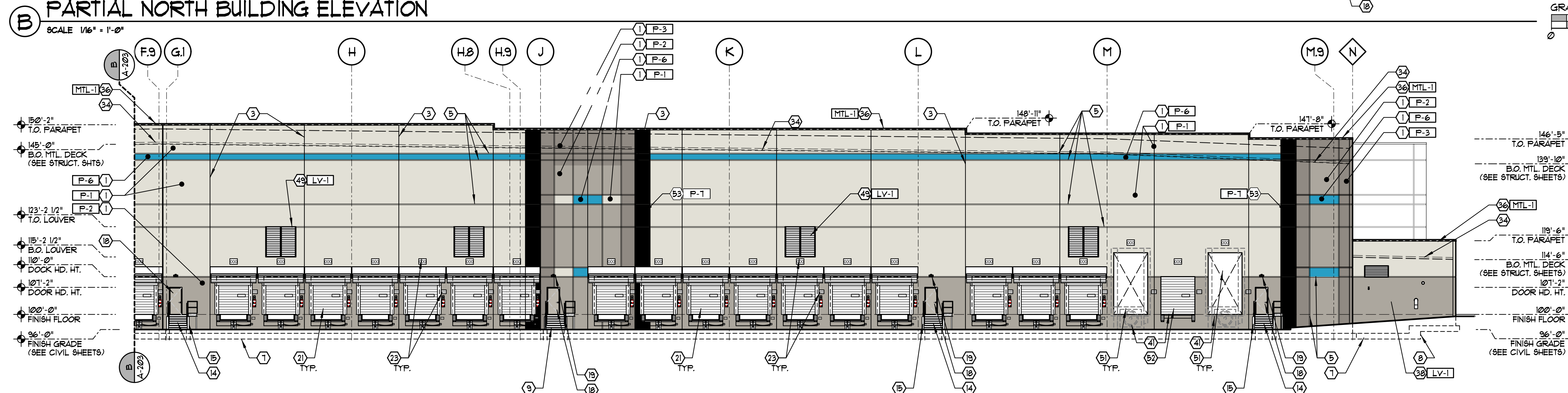
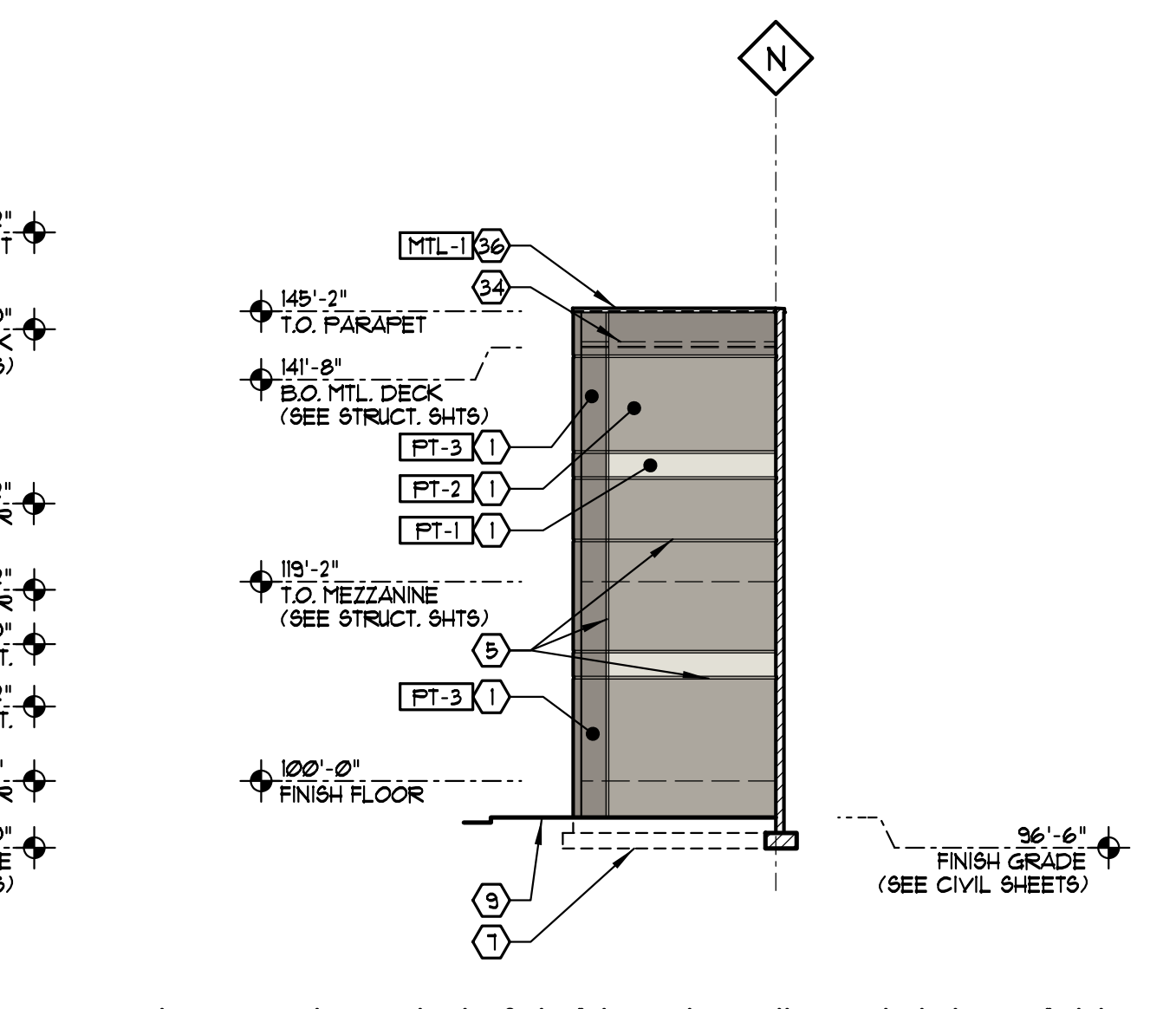
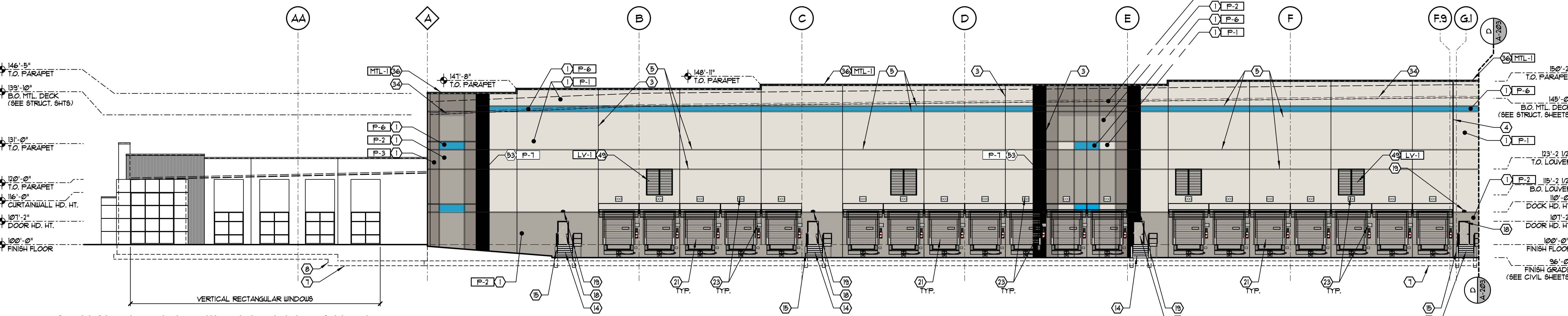
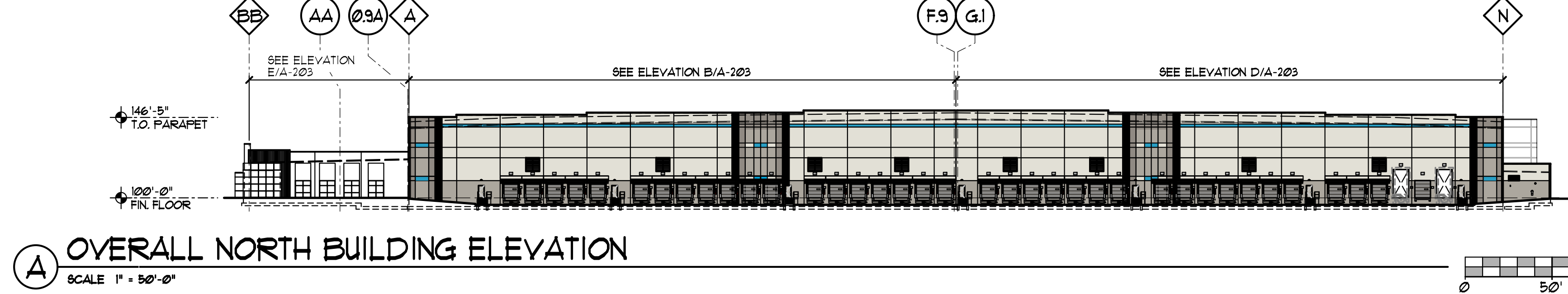
**EXTERIOR COLOR LEGEND**

P-1	TEXTURED ACRYLIC COATING SHERWIN WILLIAMS MATCH COLOR SW #1646 "FIRST STAR" (RGS 218 - 21 - 21)
P-2	TEXTURED ACRYLIC COATING SHERWIN WILLIAMS MATCH COLOR SW #1016 "MINDFUL GRAY" (RGS 188 - 103 - 113)
P-3	TEXTURED ACRYLIC COATING SHERWIN WILLIAMS MATCH COLOR SW #1011 "DORIAN GRAY" (RGS 172 - 161 - 150)
P-4	TEXTURED ACRYLIC COATING SHERWIN WILLIAMS MATCH COLOR SW #1018 "DOVETAIL" (RGS 144 - 138 - 131)
P-5	TEXTURED ACRYLIC COATING SHERWIN WILLIAMS MATCH COLOR SW #114 "MOTH WING" (RGS 160 - 144 - 121)
P-6	TEXTURED ACRYLIC COATING SHERWIN WILLIAMS MATCH COLOR SW #1795 "MAJOR BLUE" (RGS 142 - 138 - 136)
P-7	TEXTURED ACRYLIC COATING SHERWIN WILLIAMS MATCH COLOR SW #1069 "IRON ORE" (RGS 61 - 61 - 65)

- ZONING NOTES**
- ARCHITECTURAL ELEMENTS PER CITYWIDE DESIGN STANDARDS
    - VERTICAL, RECTANGULAR WINDOWS AT OFFICE ELEVATIONS
    - CANOPY AT PRIMARY BUILDING ENTRY AND SECONDARY OFFICE ENTRIES
    - STONE PAVERS (MIN. OF 350 SF) UTILIZED AT PRIMARY BUILDING ENTRY. (SEE LANDSCAPE AND CIVIL SHEETS)
    - USABLE OPEN SPACE (MIN. OF 2000 SF) AT PRIMARY BUILDING ENTRY. (SEE LANDSCAPE AND CIVIL SHEETS)
  - ALL BUILDING MOUNTED SIGNS ARE TO BE REVIEWED AND SUBMITTED SEPARATELY.

PSL #P20-249

ISSUE	REVISION	DATE
ZONING SUB.		
PERMIT SET		
PERMIT SET		APR. 16, 2021
PERMIT SET		APR. 16, 2021



- ### BUILDING ELEVATION CODED NOTES
- CONCRETE WALL PANELS WITH REVEALS AND TEXTURED PAINT COATING. PAINT EXPOSED INTERIOR FACE OF CONCRETE WALL PANELS. (PT-6)
  - CONCRETE WALL PANELS WITH 1/2" WIDE PLANK RANDOM DEPTH PATTERN. FITZGERALD FORMLINERS PATTERN #621. WWW.FORMLINERS.COM 18005411160
  - PANEL JOINT WITH SEALANT. (TYP.) (SEE DETAILS F 4 AND STRUCTURAL SHEETS)
  - 2" BUILDING EXPANSION JOINT. (SEE DETAIL A/A-403 AND STRUCTURAL SHEETS)
  - 3" WIDE x 1/2" DEEP REVEAL. (SEE DETAIL T 4 I/A-403)
  - 1" WIDE x 1/2" DEEP REVEAL
  - LINE OF CONCRETE FOOTING. (SEE STRUCTURAL SHEETS)
  - STEP IN C.I.P. CONCRETE FOOTING. (SEE STRUCTURAL SHEETS)
  - 4" THICK (MIN) CONCRETE SIDEWALK ON COMPACTED GRANULAR BASE. SLOPE 1/4" PER FOOT (2%) AWAY FROM BUILDING. CONCRETE TO BE STANDARD GRAY CONCRETE WITH LIGHT BROWN FINISH UNLESS NOTED OTHERWISE. (SEE CIVIL SHEETS)
  - 5'-0" x 6'-0" x 4" DEEP CONCRETE STOOP. SLOPE 2% MAX. AWAY FROM BUILDING. (SEE DETAIL N/A-403)
  - CONCRETE STAIRS WITH 1 1/2" DIA. GUARDRAIL AND 1 1/4" DIA. HANDRAIL. (GLV-1)
  - CONCRETE RAMP, RETAINING WALLS, AND STAIRS WITH PAINTED METAL GUARDRAIL AT 42" AFF. WITH INTERMEDIATE RAIL AT 24" AFF. AND POSTS AT 6'-0" O.C. MAX. (SEE DETAILS ON SHEET A-606)
  - 2" DIA. GALVANIZED METAL GUARDRAIL AT 42" AFF. WITH INTERMEDIATE RAIL AT 24" AFF. AND POSTS AT 6'-0" O.C. MAX. (SEE DETAILS ON SHEET A-606)
  - EXTERIOR GALVANIZED METAL STAIR WITH 1 1/2" DIA. GUARDRAIL AND 1 1/4" DIA. HANDRAIL. PROVIDE (2) 6" DIA. BOLLARDS. (SEE DETAILS ON SHEET A-606)
  - 6" DIA. CONCRETE FILLED STEEL BOLLARD. PROVIDE REPLACEMENT YELLOW SLEEVE. (SEE DETAILS F/A-150)
  - PRE-FINISHED ALUMINUM WINDOW SYSTEM WITH 1" INSULATED GLAZING. (SEE ELEVATIONS ON SHEET A-401)
  - 3'-0" x 7'-0" WIDE STILE ALUMINUM STOREFRONT ENTRANCE DOOR(S) WITH 1" INSULATED TEMPERED CLEAR GLASS. (SEE DOOR AND FRAME SCHEDULE ON SHEET A-400) (SF-1)
  - INSULATED HOLLOW METAL SERVICE DOOR AND FRAME. PAINT SEMI-GLOSS. GROUT FRAME SOLID. (SEE DOOR AND FRAME SCHEDULE ON SHEET A-400)
  - EMERGENCY ESCAPE LIGHT FIXTURE. CENTER ABOVE DOOR AT 5'-0" AFF. UNDO. (SEE ELECTRICAL SHEETS)
  - 14'-0" x 16'-0" INSULATED OVERHEAD SECTIONAL DRIVE-THRU DOOR. (SEE DOOR AND FRAME SCHEDULE ON SHEET A-400) PROVIDE (4) 6" DIA. BOLLARDS (TYP.)
  - 9'-0" x 10'-0" INSULATED OVERHEAD SECTIONAL DOOR DOCK EQUIPMENT. (SEE DOCK EQUIPMENT SCHEDULE ON SHEET A-400) PROVIDE (2) 6" DIA. BOLLARDS (TYP.)
  - KNOCK-OUT PANEL FOR FUTURE WINDOW / DOOR DOOR AND LEVELER. SHOWN DASHED (TYP.)
  - DOCK SIGNAGE. (SEE DETAILS ON SHEET A-402)
  - AUTOMATIC DOOR OPERATOR AND PEDESTAL. (SEE DOOR SCHEDULE ON SHEET A-400)
  - PRE-FABRICATED STEEL CANOPY WITH PREFINISHED METAL FASCIA AND CEILING PANELS. PROVIDE LED LIGHT FIXTURES. TIE DOWNS INTO UNDERGROUND STORM SYSTEM. SHEET DRAINING WILL NOT BE ACCEPTED. (SEE PLUMBING AND CIVIL SHEETS)
  - 2" x 1" BLACK VINYL COATED WOVEN WIRE MESH (10 GA.) SECURITY FENCING. TERMINATE ENCLOSURE AT UNDERSIDE OF CANOPY STRUCTURE. (WIRE CRAFTERS, 18006761816 OR APPROVED EQUAL)
  - 2" x 1" BLACK VINYL COATED WOVEN WIRE MESH (10 GA.) SECURITY GATE WITH EXIT DEVICE. (SEE DOOR AND FRAME SCHEDULE ON SHEET A-400) (WIRE CRAFTERS, 18006761816 OR APPROVED EQUAL)
  - STEEL FRAME ENTRY CANOPY WITH PREFINISHED COMPOSITE ALUMINUM PANEL FASCIA AND CEILING SYSTEM. (SEE BUILDING SECTIONS)
  - PRE-ENGINEERED SMOKER'S SHELTER. (SEE SHEET A-005)
  - STAINLESS STEEL OVERFLOW NOZZLE W/ HINGED PERFORATED COVER. SEE PLUMBING SHEETS FOR SIZE. MOUNT AT 24" ABOVE FINISHED ADJACENT SURFACE. EQUAL TO ZURN MODEL #799-DC. WWW.ZURN.COM 1814550201 (SEE DETAIL F/A-307)
  - 8'-0" x 14'-0" DECORATIVE LIGHT POLE AND FIXTURE. (SEE ELECTRICAL DRAWINGS)
  - THRU WALL DRAINAGE / OVERFLOW SCUPPER. SIZES VARY. SEE BUILDING ELEVATIONS. (SEE DETAILS B AND E/A-307)
  - PREFINISHED METAL CORNING (24 GA.) OR FASCIA EDGE FLASHING (24 GA.). (SEE DETAIL J/A-309)
  - 6" DIA. CONCRETE FILLED STEEL BOLLARDS AT GENERATOR AND TRANSFORMER. PROVIDE REPLACEMENT YELLOW SLEEVE. (TYP.) (SEE DETAIL E/A-153)
  - MOTORIZED WALL LOUVER AT FIRE PUMP ROOM. (SEE MECHANICAL & ELECTRICAL SHEETS)
  - FIRE ALARM SYSTEM SPEAKER/STROBE DEVICE (SEE FIRE PROTECTION SHEETS)
  - SURFACE MOUNTED, HINGED DOOR FIRE DEPARTMENT KNOX BOX w/ TAMPER SWITCH. MOUNT AT 4'-6" ABOVE FINISH GRADE. (KNOX-BOX 3300 SERIES)
  - CONTRACTOR OR AUGER PROVIDED AND INSTALLED BY TENANT. G.C. TO PROVIDE ELECTRICAL CONNECTIONS. G.C. TO COORDINATE WITH TENANT'S VENDOR. (SEE ELECTRICAL SHEETS) (SEE DOCK EQUIPMENT SCHEDULE ON SHEET A-401 FOR DOCK EQUIPMENT. (SEE DOOR AND FRAME SCHEDULE ON SHEET A-400))
  - POWER COMPANY TRANSFORMER AND CONCRETE PAD. (SEE ELECTRICAL SHEETS) (SEE DETAIL F/A-005)
  - EMERGENCY BACK-UP GENERATOR AND CONCRETE PAD. (SEE DETAIL G/A-005. (SEE ELECTRICAL SHEETS)
  - GAS METER SET. (SEE PLUMBING SHEETS)
  - HOSE BIBBS. (SEE PLUMBING SHEETS) PROVIDE FROST PROOF SILLCOCK AT EXTERIOR WALLS. ENSURE ALL PIPING IS WITHIN THE THERMAL ENVELOPE.
  - SURFACE MOUNTED WALL PACK LIGHT FIXTURE. CENTER FIXTURE IN PANEL. MOUNT CENTER OF FIXTURE AT 30'-4" AFF. (SEE ELECTRICAL SHEETS)
  - 2" RECESSED AREA WITHIN CONCRETE WALL PANEL. (SEE DETAIL V/A-403)
  - CONCRETE DOCK PAD TO EXTEND 6'-0" FROM FACE OF BUILDING. (SEE CIVIL ENGINEERING SHEETS FOR THICKNESS)
  - PREFINISHED MOTORIZED ALUMINUM LOUVER. PROVIDE INTERIOR BIRD SCREEN (SEE LOUVER SCHEDULE ON EACH SHEET) (SEE MECHANICAL & ELECTRICAL SHEETS) 1814550201 (SEE DETAIL F/A-307)
  - AREA OF FUTURE TENANT SIGNAGE.
  - AUGER OPENING.
  - CONTRACTOR DOOR.
  - CONCRETE WALL PANELS WITH RIBBED PATTERN. (REPLACEMENT YELLOW SLEEVE) MODEL #48318-13-5F. (TYPICAL OF 2) WWW.FORMLINERS.COM 18005411160
  - RETURN REVEALS ON ALL EXPOSED SIDES OF PIER.

### SHELL BUILDING MATERIAL FINISH KEY

MARK	MANUFACTURER	DESCRIPTION	REMARKS
<b>EXTERIOR PAINT / TEXTURED ACRYLIC COATING (CONCRETE WALL PANELS)</b>			
P-1	SHERWIN WILLIAMS	TEXTURED ACRYLIC COATING MATCH COLOR SW #1646 "FIRST STAR"	EXTERIOR FIELD COLOR EXTERIOR COLOR AT PUMP HOUSE (SEMI-GLOSS PAINT AT METAL)
P-2	SHERWIN WILLIAMS	TEXTURED ACRYLIC COATING MATCH COLOR SW #1016 "MINDFUL GRAY"	EXTERIOR ACCENT COLOR HOLLOW METAL DOORS AND FRAMES (SEMI-GLOSS) LIGHT POLE BASES INSIDE CURBED ISLANDS
P-3	SHERWIN WILLIAMS	TEXTURED ACRYLIC COATING MATCH COLOR SW #1011 "DORIAN GRAY"	EXTERIOR ACCENT COLOR AT WAREHOUSE EXTERIOR FIELD COLOR AT GUARDHOUSE
P-4	SHERWIN WILLIAMS	TEXTURED ACRYLIC COATING MATCH COLOR SW #1018 "DOVETAIL"	EXTERIOR ACCENT COLOR
P-5	SHERWIN WILLIAMS	TEXTURED ACRYLIC COATING MATCH COLOR SW #974 "MOTH WING"	EXTERIOR ACCENT COLOR EXTERIOR COLOR AT GUARDHOUSE
P-6	SHERWIN WILLIAMS	TEXTURED ACRYLIC COATING MATCH COLOR PANTONE #2955C	EXTERIOR ACCENT COLOR
P-7	SHERWIN WILLIAMS	SEMI-GLOSS PAINT, "BLACK" (OPTIONAL AS VINYL DECAL)	EXTERIOR ACCENT COLOR AT GUARDHOUSE
P-8	SHERWIN WILLIAMS	SEMI-GLOSS PAINT (LOW VOC) "SAFETY YELLOW"	STEEL BOLLARDS, CURBS AND LIGHT POLE BASES OUTSIDE CURBED ISLANDS
<b>PREFINISHED METAL</b>			
MTL-1	PAC-CLAD	24 GA. PREFINISHED ALUMINUM COLOR - "GRANITE"	METAL COPING, SCUPPERS, AND DOWNSPOUTS
<b>COMPOSITE METAL PANELS (ENTRY CANOPY)</b>			
GRP-1	ALPOLIC	4" x 1" UET SYSTEM COLOR - MATCH P-6	PROVIDE DOW CORNING 795 SEALANT AT JOINTS. MATCH P-6
<b>GALVANIZED METAL</b>			
GLV-1	---	GALVANIZED STEEL (NO PAINT)	EXTERIOR METAL RAILINGS, STAIRS AND LANDINGS
<b>STOREFRONT / WINDOW SYSTEM</b>			
SF-1	KALNEER	PREFINISHED ALUMINUM COLOR - DARK BRONZE	STOREFRONT / WINDOW SYSTEM (TYP.)
<b>AIR INTAKE LOUVERS</b>			
LV-1	GREEN-ECK	PREFINISHED ALUMINUM (MATCH P-1) COLOR - "BONE WHITE" #F002	BUILDING LOUVERS (TYP.) (L1 AND L3 ONLY)
LV-2	GREEN-ECK	PREFINISHED ALUMINUM (MATCH P-2) COLOR - "SHOCK" #F004	BUILDING LOUVERS (TYP.) (L2 AND L4)

PSL #P20-249

- ### ZONING NOTES
- ARCHITECTURAL ELEMENTS PER CITYWIDE DESIGN STANDARDS
    - A. VERTICAL, RECTANGULAR WINDOWS AT OFFICE ELEVATIONS
    - B. CANOPY AT PRIMARY BUILDING ENTRY AND SECONDARY OFFICE ENTRIES
    - C. STONE PAVERS (MIN. OF 300 SF) UTILIZED AT PRIMARY BUILDING ENTRY. (SEE LANDSCAPE AND CIVIL SHEETS)
    - D. USABLE OPEN SPACE (MIN. OF 3,000 SF) AT PRIMARY BUILDING ENTRY. (SEE LANDSCAPE AND CIVIL SHEETS)
  - ALL BUILDING MOUNTED SIGNS ARE TO BE REVIEWED AND SUBMITTED SEPARATELY.

### EXTERIOR ACRYLIC COLOR LEGEND

P-1	TEXTURED ACRYLIC COATING SHERWIN WILLIAMS MATCH COLOR SW #1646 "FIRST STAR" (RGB 218 - 211 - 207)
P-2	TEXTURED ACRYLIC COATING SHERWIN WILLIAMS MATCH COLOR SW #1016 "MINDFUL GRAY" (RGB 188 - 183 - 173)
P-3	TEXTURED ACRYLIC COATING SHERWIN WILLIAMS MATCH COLOR SW #1011 "DORIAN GRAY" (RGB 172 - 161 - 158)
P-4	TEXTURED ACRYLIC COATING SHERWIN WILLIAMS MATCH COLOR SW #1018 "DOVETAIL" (RGB 144 - 139 - 131)
P-5	TEXTURED ACRYLIC COATING SHERWIN WILLIAMS MATCH COLOR SW #974 "MOTH WING" (RGB 140 - 144 - 127)
P-6	TEXTURED ACRYLIC COATING SHERWIN WILLIAMS MATCH COLOR SW #195 "MAJOR BLUE" (RGB 40 - 58 - 136)
P-7	TEXTURED ACRYLIC COATING SHERWIN WILLIAMS MATCH COLOR SW #1069 "IRON ORE" (RGB 61 - 61 - 65)

### LOUVER SCHEDULE

U	8'-0" W x 8'-0" H TYPICAL OF 30 - COLOR TO MATCH P-1
U	9'-0" W x 9'-4" H TYPICAL OF 25 - COLOR TO MATCH P-2
U	6'-4" W x 3'-0" H TYPICAL OF 1 - (SHELL UTILITY ROOM) - COLOR TO MATCH P-1
U	3'-4" W x 3'-4" H TYPICAL OF 1 - (FIRE PUMP HOUSE) - COLOR TO MATCH P-1
U	6'-4" W x 4'-0" H TYPICAL OF 1 - (FIRE PUMP HOUSE) - COLOR TO MATCH P-1

- ### SHELL BUILDING FINISH NOTES
- SEE SPECIFICATIONS FOR EXTERIOR TEXTURED ACRYLIC COATING. COLORS TO MATCH SHERWIN WILLIAMS PAINT COLORS AS INDICATED IN SHELL BUILDING MATERIAL FINISH KEY.
  - PAINT EXTERIOR HOLLOW METAL DOORS & FRAMES SEMI-GLOSS. COLOR TO MATCH P-2.
  - PAIN CONCRETE FILLED STEEL BOLLARDS SEMI-GLOSS P-1 "SAFETY YELLOW".
  - PAINT INTERIOR FACE OF WAREHOUSE AND INTERIOR OF STAIR TOWER CONCRETE WALL PANELS PT-6 "PLAT WHITE". (NOTE: WALLS THAT ARE FULLY COVERED BY INTERIOR APPLIED WALL INSULATION OR METAL FRAMING DOES NOT NEED TO BE PAINTED)
  - EXTERIOR CONCRETE WALL PANEL CONTROL JOINTS TO BE SEALED WITH SONNEBORN "NF-2" OR APPROVED EQUAL.
  - PAINT INTERIOR BUILDING COLUMNS PT-8 (YELLOW) AND PT-11 (WHITE) AS DETAILED - TYPICAL. UNDO. (SEE DETAILS, SHEET A-500)
  - PAIN 24" HIGH BAND PT-10 (RED) ON ALL FOUR SIDES OF COLUMN AT 20'-0" AFF. AT FIRE EXTINGUISHER LOCATIONS.
  - PAIN ENTIRE COLUMN PT-10 (RED) AT FIRE HOSE CONNECTION LOCATIONS.
  - PROVIDE 1-HR RATED CONCRETE WALL PANEL JOINTS AT VERTICAL EXIT ENCLOSURES (STAIRS) CONTROL JOINTS TO BE SEALED WITH SONNEBORN "NF-2" OR APPROVED EQUAL.

### SYMBOL LEGEND

(Symbol)	SHELL BUILDING ELEVATION CODED NOTE TAG (SEE SHEET A-203 AND A-204 FOR SCHEDULE)
(Symbol)	DOOR NUMBER TAG (SEE SHEET A-400 FOR DOOR SCHEDULE)
(Symbol)	DOCK/COPPERATOR DOOR NUMBER TAG (SEE SHEET A-400 FOR DOOR SCHEDULE)
(Symbol)	STOREFRONT SYSTEM TAG (SEE SHEET A-401 FOR ELEVATIONS)
(Symbol)	LOUVER TAG (SEE SHEET A-203 AND A-204 FOR LOUVER SCHEDULE AND SHEET A-402 FOR TYPICAL ELEVATIONS)
(Symbol)	MATERIAL / FINISH TAG (SEE SHEET A-203 AND A-204 FOR MATERIAL FINISH KEY)
(Symbol)	BUILDING EXPANSION JOINT (SEE DETAIL A/A-404)



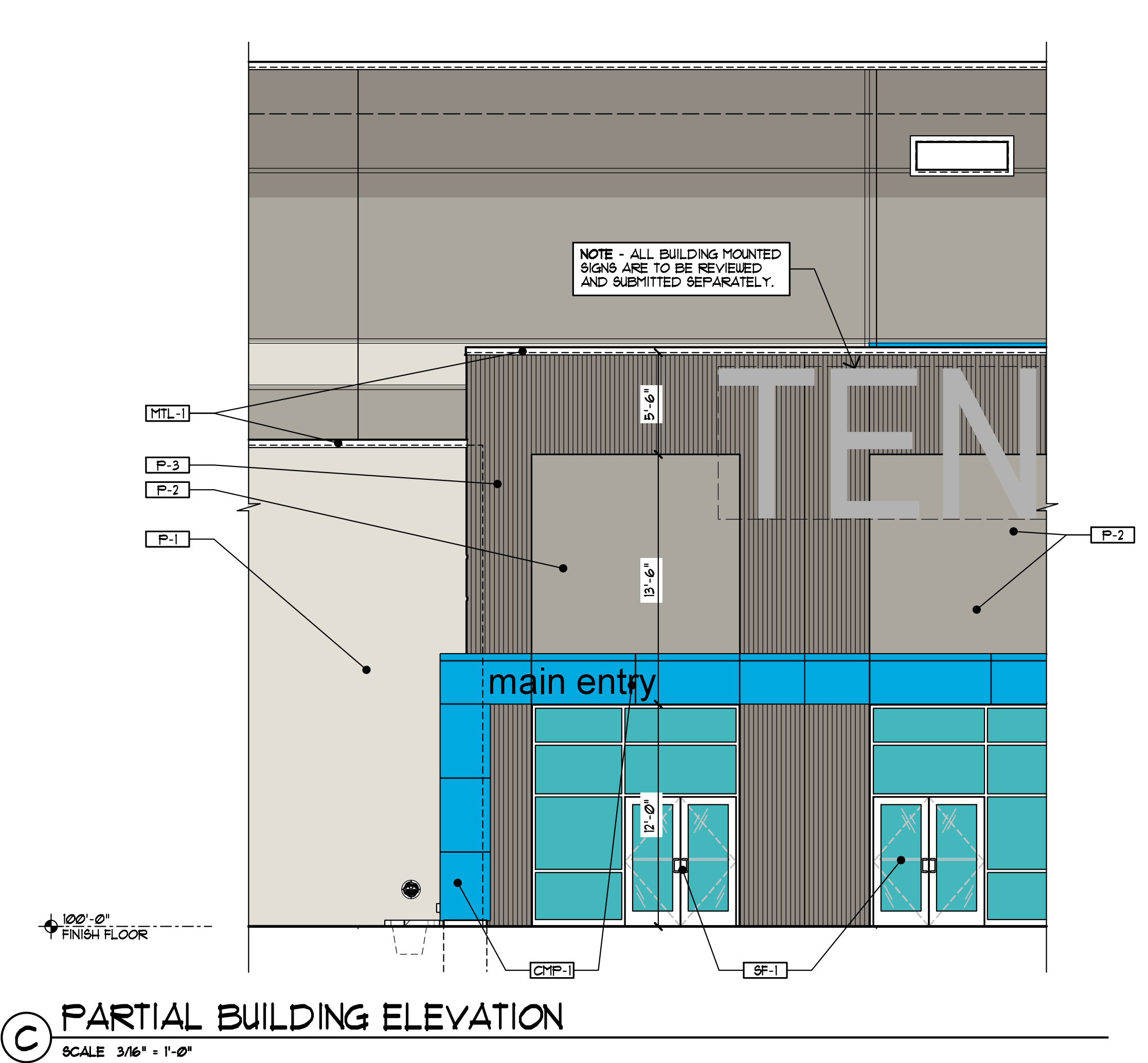
ISSUE	REVISION	DATE
ZONING SUB.		
PERMIT SET		APR. 16, 2021
		APR. 16, 2021

**PAINT COLOR SCHEME AND NOTES**

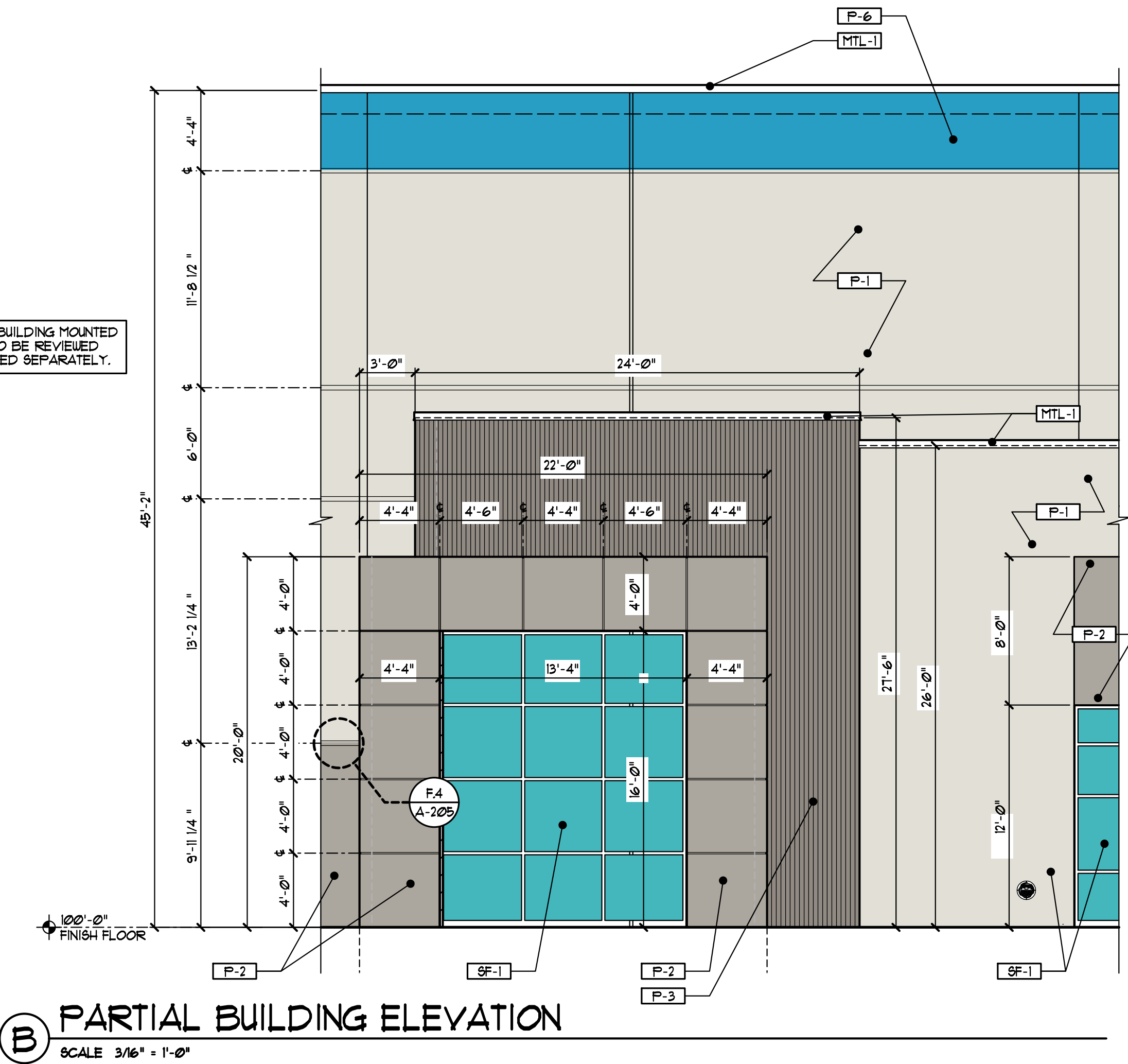
FAA 2023.03

**A-205**

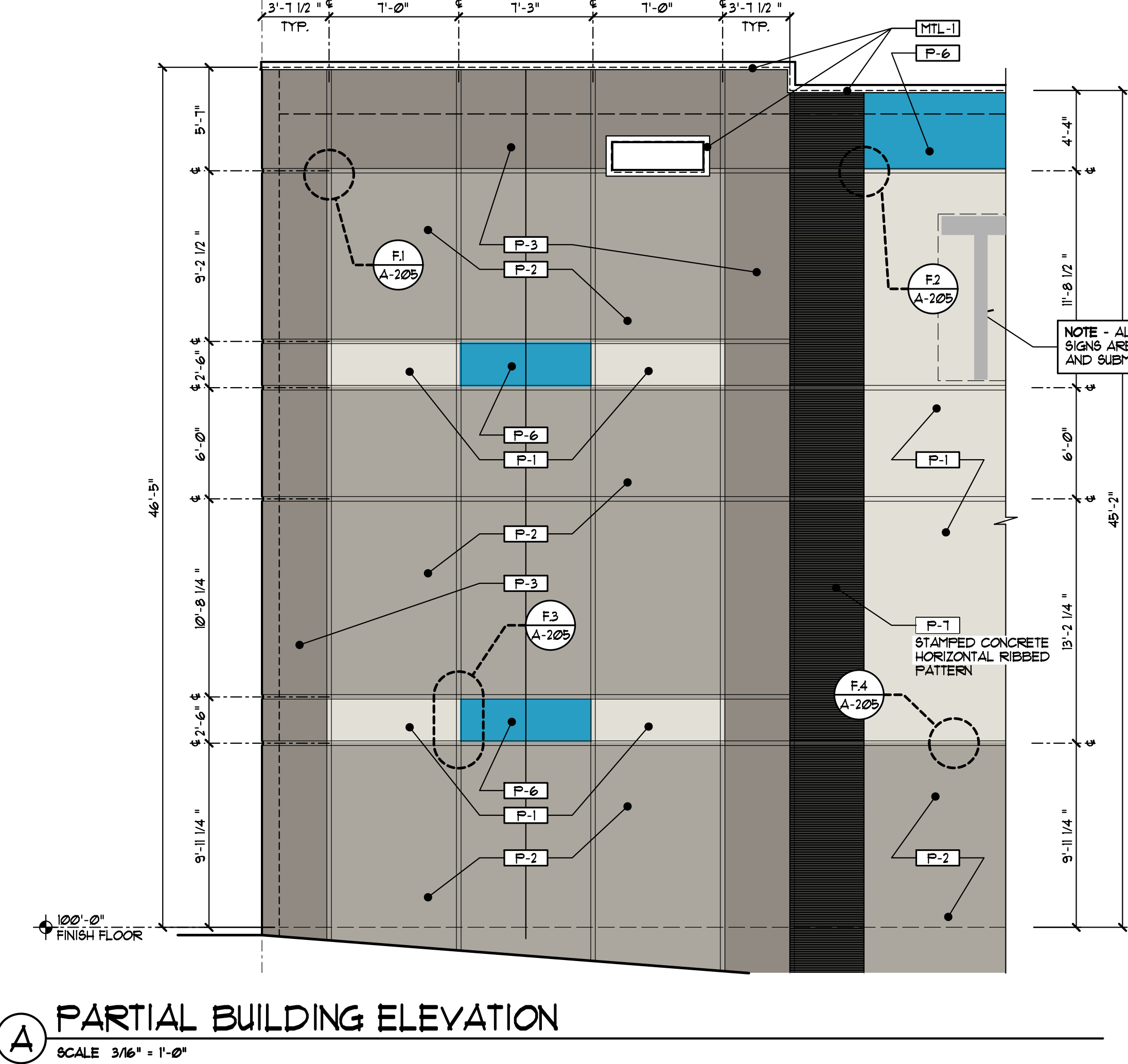
PB13



**C PARTIAL BUILDING ELEVATION**  
SCALE 3/16" = 1'-0"



**B PARTIAL BUILDING ELEVATION**  
SCALE 3/16" = 1'-0"



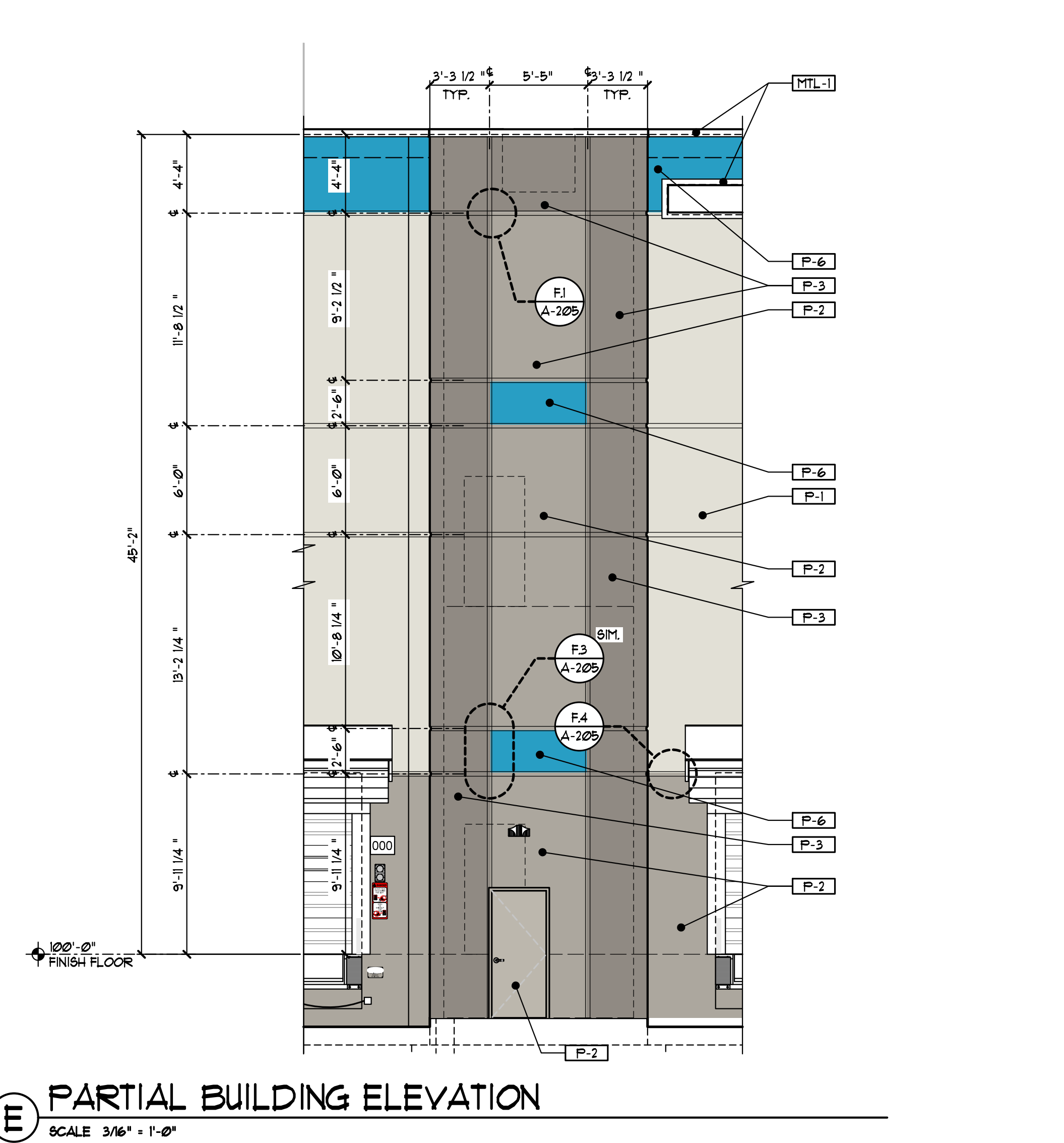
**A PARTIAL BUILDING ELEVATION**  
SCALE 3/16" = 1'-0"

EXTERIOR COLOR LEGEND	
P-1	TEXTURED ACRYLIC COATING SHERWIN WILLIAMS MATCH COLOR SW #1646 "FIRST STAR" (RGB 218 - 217 - 212)
P-2	TEXTURED ACRYLIC COATING SHERWIN WILLIAMS MATCH COLOR SW #1216 "MINDFUL GRAY" (RGB 188 - 183 - 173)
P-3	TEXTURED ACRYLIC COATING SHERWIN WILLIAMS MATCH COLOR SW #1201 "DORIAN GRAY" (RGB 172 - 161 - 158)
P-4	TEXTURED ACRYLIC COATING SHERWIN WILLIAMS MATCH COLOR SW #1208 "DOVETAIL" (RGB 144 - 138 - 131)
P-5	TEXTURED ACRYLIC COATING SHERWIN WILLIAMS MATCH COLOR SW #3174 "MOTH WINGS" (RGB 162 - 144 - 171)
P-6	TEXTURED ACRYLIC COATING SHERWIN WILLIAMS MATCH COLOR SW #5789 "MAJOR BLUE" (RGB 40 - 158 - 196)
P-7	TEXTURED ACRYLIC COATING SHERWIN WILLIAMS MATCH COLOR SW #1265 "IRON ORE" (RGB 61 - 61 - 65)

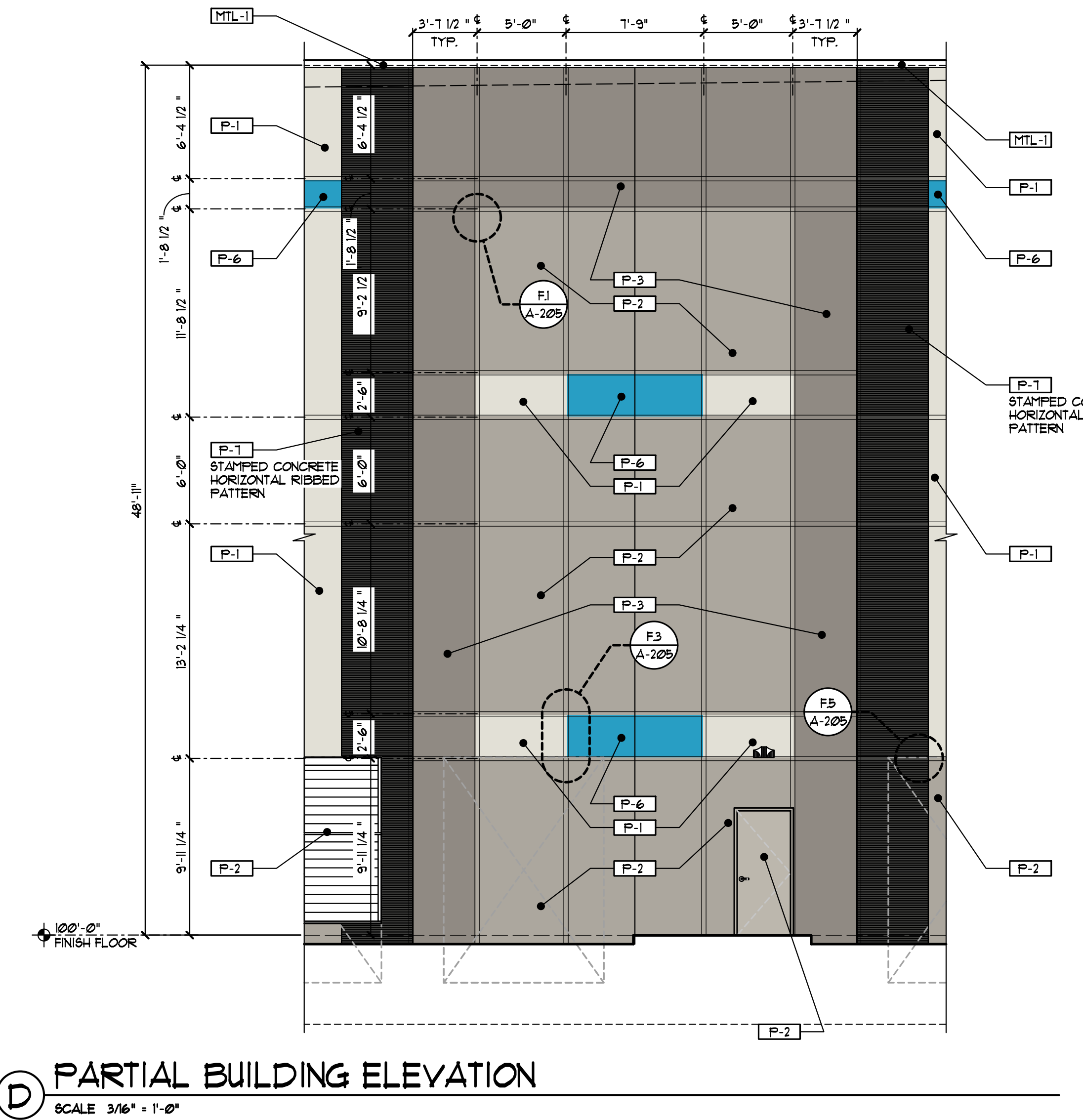
SHELL BUILDING MATERIAL FINISH KEY			
MARK	MANUFACTURER	DESCRIPTION	REMARKS
<b>EXTERIOR PAINT / TEXTURED ACRYLIC COATING (CONCRETE WALL PANELS)</b>			
P-1	SHERWIN WILLIAMS	TEXTURED ACRYLIC COATING MATCH COLOR SW #1646 "FIRST STAR"	EXTERIOR FIELD COLOR EXTERIOR COLOR AT PUMP HOUSE (SEMI-GLOSS PAINT AT METAL)
P-2	SHERWIN WILLIAMS	TEXTURED ACRYLIC COATING MATCH COLOR SW #1216 "MINDFUL GRAY"	EXTERIOR ACCENT COLOR HOLLOW METAL DOORS AND FRAMES (SEMI-GLOSS LIGHT POLE BRUSH INSIDE CURBED ISLANDS)
P-3	SHERWIN WILLIAMS	TEXTURED ACRYLIC COATING MATCH COLOR SW #1201 "DORIAN GRAY"	EXTERIOR ACCENT COLOR AT WAREHOUSE EXTERIOR FIELD COLOR AT GUARDHOUSE
P-4	SHERWIN WILLIAMS	TEXTURED ACRYLIC COATING MATCH COLOR SW #1208 "DOVETAIL"	EXTERIOR ACCENT COLOR
P-5	SHERWIN WILLIAMS	TEXTURED ACRYLIC COATING MATCH COLOR SW #3174 "MOTH WINGS"	EXTERIOR ACCENT COLOR EXTERIOR COLOR AT GUARDHOUSE
P-6	SHERWIN WILLIAMS	TEXTURED ACRYLIC COATING MATCH COLOR PANTONE 1935C	EXTERIOR ACCENT COLOR
P-7	SHERWIN WILLIAMS	SEMI-GLOSS PAINT "BLACK" (OPTIONAL AS VINYL DECAL)	EXTERIOR ACCENT COLOR AT GUARDHOUSE
P-8	SHERWIN WILLIAMS	SEMI-GLOSS PAINT (LOW VOC) "SAFETY YELLOW"	STEEL BOLLARDS, CURBS AND LIGHT POLE BRUSH OUTSIDE CURBED ISLANDS
<b>REFINISHED METAL</b>			
MTL-1	PAC-CLAD	24 GA. PREFINISHED ALUMINUM COLOR - "GRANITE"	METAL COPINGS, SCUPPERS, AND DOWNSPOUTS
<b>COMPOSITE METAL PANELS (ENTRY CANOPY)</b>			
CMF-1	ALPOLIC	4MM - MET SYSTEM COLOR - MATCH P-6	PROVIDE DOW CORNING 795 SEALANT AT JOINTS. MATCH P-6
<b>GALVANIZED METAL</b>			
GLV-1	---	GALVANIZED STEEL (NO PAINT)	EXTERIOR METAL RAILINGS, STAIRS AND LANDINGS
<b>STOREFRONT / WINDOW SYSTEM</b>			
SF-1	KAUKEER	PREFINISHED ALUMINUM COLOR - DARK BRONZE	STOREFRONT / WINDOW SYSTEM (TYP.)
<b>AIR INTAKE LOUVERS</b>			
LV-1	GREENECK	PREFINISHED ALUMINUM (MATCH P-1) COLOR - "BONE WHITE", #9102	BUILDING LOUVERS (TYP.) (L1 AND L3 ONLY)
LV-2	GREENECK	PREFINISHED ALUMINUM (MATCH P-2) COLOR - "SMOKE", #9104	BUILDING LOUVERS (TYP.) (L2 AND L4)

PSL #P20-249

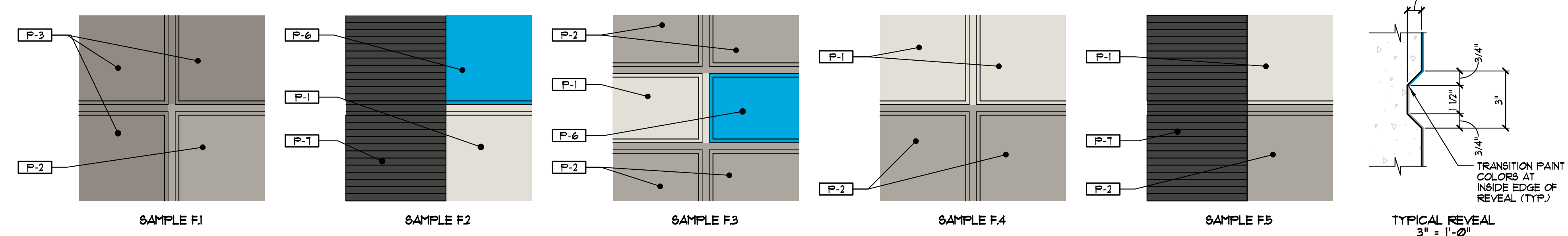
- ZONING NOTES**
- ARCHITECTURAL ELEMENTS PER CITYWIDE DESIGN STANDARDS
    - A. VERTICAL RECTANGULAR WINDOWS AT OFFICE ELEVATIONS
    - B. CANOPY AT PRIMARY BUILDING ENTRY AND SECONDARY OFFICE ENTRIES
    - C. STONE PAVERS (MIN. OF 350 SF) UTILIZED AT PRIMARY BUILDING ENTRY. (SEE LANDSCAPE AND CIVIL SHEETS)
    - D. USABLE OPEN SPACE (MIN. OF 2,000 SF) AT PRIMARY BUILDING ENTRY. (SEE LANDSCAPE AND CIVIL SHEETS)
  - ALL BUILDING MOUNTED SIGNS ARE TO BE REVIEWED AND SUBMITTED SEPARATELY.



**E PARTIAL BUILDING ELEVATION**  
SCALE 3/16" = 1'-0"



**D PARTIAL BUILDING ELEVATION**  
SCALE 3/16" = 1'-0"



**F ENLARGED PAINT COLOR DETAILS**  
SCALE 3/4" = 1'-0"