



# Torino Regional Park Master Plan



# Introductions



## PORT ST. LUCIE PARKS & RECREATION

Kristina Ciuperger | Deputy City Manager

Bradley Keen | Acting Director

Kelly Boatwright | Acting Assistant Director

Mike Kendrick | Deputy Director

Carrie Wilbur | Project Manager - CIP

Calvin King Jr. | Project Coordinator

## Kimley»Horn

Jonathan Haigh | Project Manager

Kristen Alexa | Landscape Architect

Nick Kuhn | Park Planner



# Agenda

- 1** Project Progress
- 2** Public Input Review
- 3** Phase 1 Approval Request
- 4** Inspiration Images

1

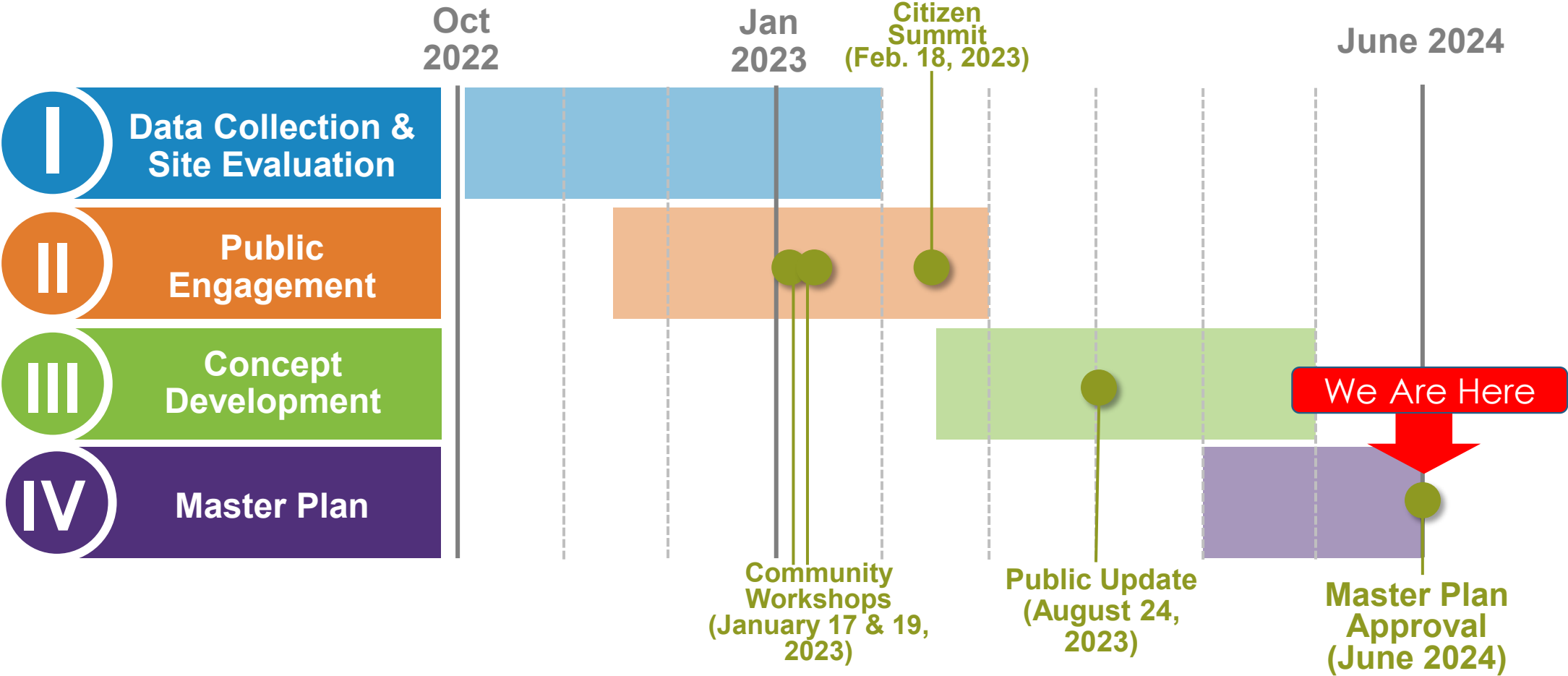
# Project Progress



# Process



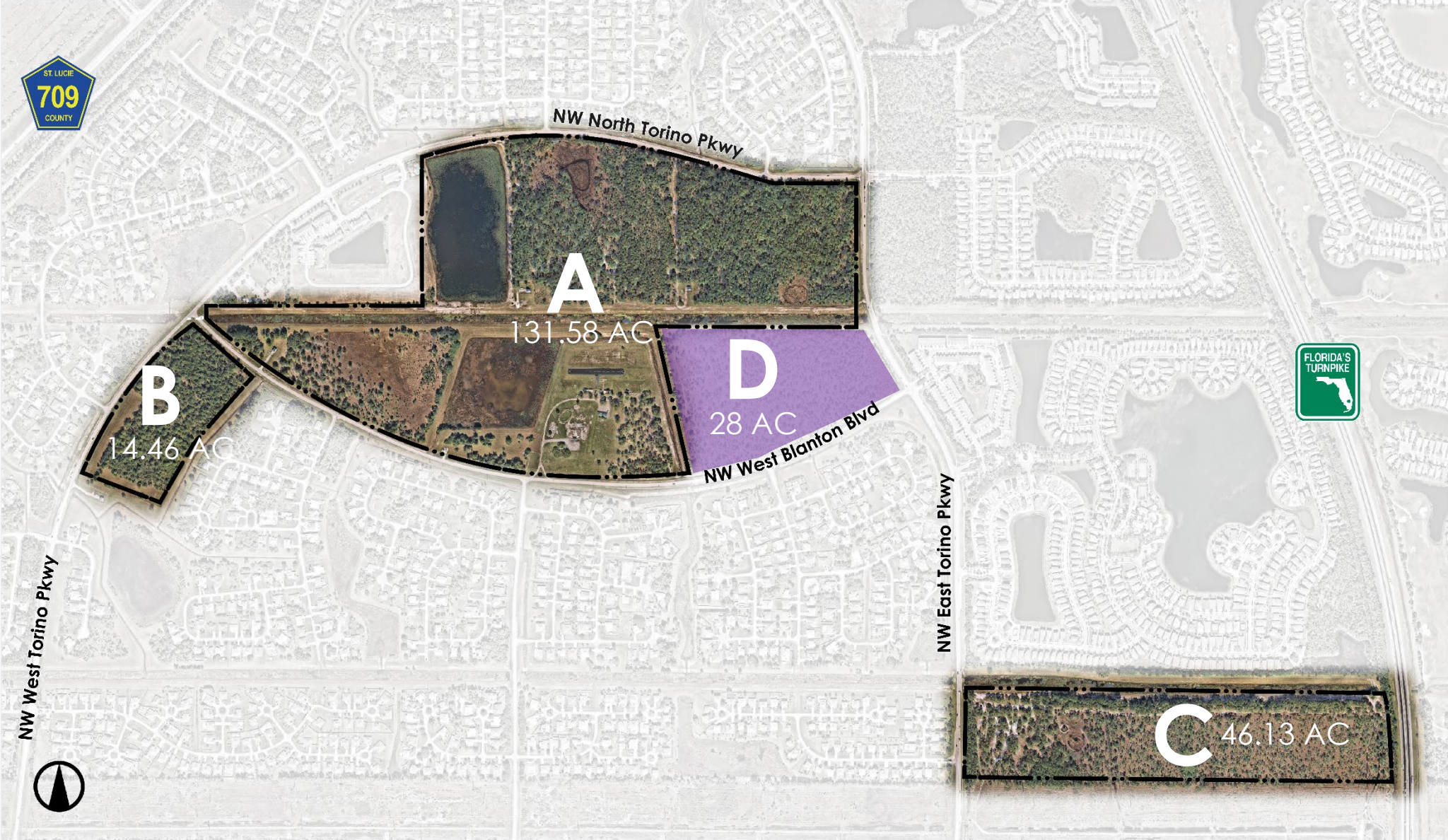
# Schedule



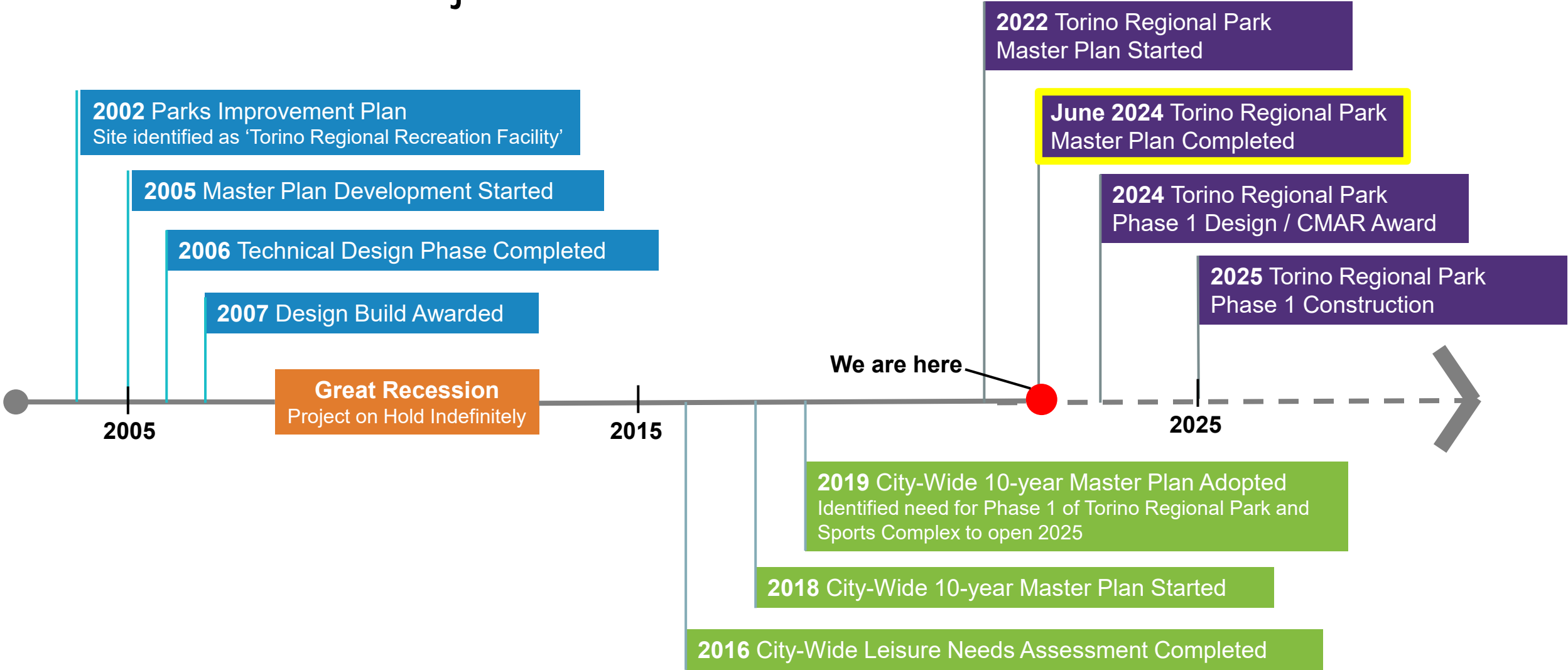
# Aerial Map

## Four Parcels:

- Combined A, B, and C = 192.17 acres
- Parcel D: Future potential acquisition ~28AC



# Timeline of Project





# 2 Public Input Review



# Public Input Findings

## Community Workshops

**PUBLIC INFORMATION MEETINGS**

Tuesday, Jan. 17 6-8 p.m. 2023

Virtual meeting:  
Visit our website at [www.CityofPSL.com/TorinoRegionalPark](http://www.CityofPSL.com/TorinoRegionalPark).  
Preregistration is required.

OR

Thursday, Jan. 19 6-8 p.m. 2023

In-person meeting:  
West Gate K-8 School, cafeteria  
1650 NW Cashmere Blvd.

**Torino Regional Park**



The public is invited to meet with City staff to provide feedback on the Conceptual Master Plan for Torino Regional Park.

Join us for on the pro provide in possible pa

[www.CityofPSL.com](http://www.CityofPSL.com)

Participate in the Torino Regional Park Master Plan!

Visit the project website and complete a survey

Port St. Lucie PARKS & RECREATION

[www.CityofPSL.com](http://www.CityofPSL.com)

CityofPSL @CityofPortStLucie @CityofPSL

- Virtual presentation was conducted on January 17, 2023 and broadcast on PSL TV.
- In-Person workshop held at West Gate K-8 School and attended by 36 participants.
- Online survey was conducted from Feb 1, 2023 through March 11, 2023 with 1,040 responses.



# Public Input Findings

## Community Participation and Input

- 1,040 total participants
- 80% of responses from city residents
- Results cross-tabulated to prioritize city resident input
- Over 27% of responses from Torino neighborhood
- Statistically valid results with +/-3.4% margin of error
- Over 440 written comments provided

	Quantitative						Qualitative					Observational	
	Facilities LOS (2019 System MP)	Priority Investment Rating (2019 System MP)	Needs Assessment Summary (2019 System MP)	SFIA: Participation Trends	Florida SCORP	Recreation Trends	Stakeholder Input	Online Survey (most desired)	Online Survey (most important)	Community Workshop (currently use)	Community Workshop (most need)	Community Park (Prototypical Amenities & Upgrade Checklist; 2019 System MP)	Site Observations (feasibility & constructability)
Paved trails	High	High	High		High	High	High	High	High	High	Medium	High	High
Unpaved trails	High	High	High		High	High	High	High	High	High	High	Medium	High
Playground	High	Medium	Low		High	Medium	Medium	High	High	Medium	Low	High	High
Picnic shelters	High	Medium	Low		High	Medium		High	Medium	Low	Medium	High	High
Multipurpose fields	High	Low	Low	High	Low	High	High	Low	Medium			High	High
Splash pad	High	Medium	Medium			Medium	High	High	High			High	Medium
Basketball courts	High	Low		High	High	High		Low		Low		High	High
Pickleball courts		Low		High		High	High	Low		Medium	High	Medium	High
Recreation Center	High	Medium	Medium	High		Medium	High					High	Medium
Leisure pool / lap lanes	High	Medium	Medium	Medium	Medium	Medium		Medium	Medium			Low	Medium
Tennis courts	Medium	Low		High		Medium		Low		Low		High	High
Dog park	Low	High	High		Medium	Medium		Low				Medium	Medium
Restrooms						High		High	High			High	High
Exercise stations/fitness court		Medium		Medium		High		Low			Low	High	High
Baseball fields	Medium	Low			High	Low		Low		Low		High	High
Disc golf course	High	Low				Medium	Medium	Low	Medium			Low	High
Skatepark		Low	Low			Medium	High	Medium	Medium			Low	Medium
Beach volleyball courts	High	Low				Medium		Low			Low	Medium	High
Softball fields	High	Low				Low		Low				High	High
Open space/event lawn						Medium		Medium	Medium			High	High
Fishing pier				High	Medium	High						Low	Low
Wi-Fi						High		Medium				High	Low
Food truck area						High		Medium				Medium	Medium
Kayak launch				Medium	Medium	Medium						Low	Low

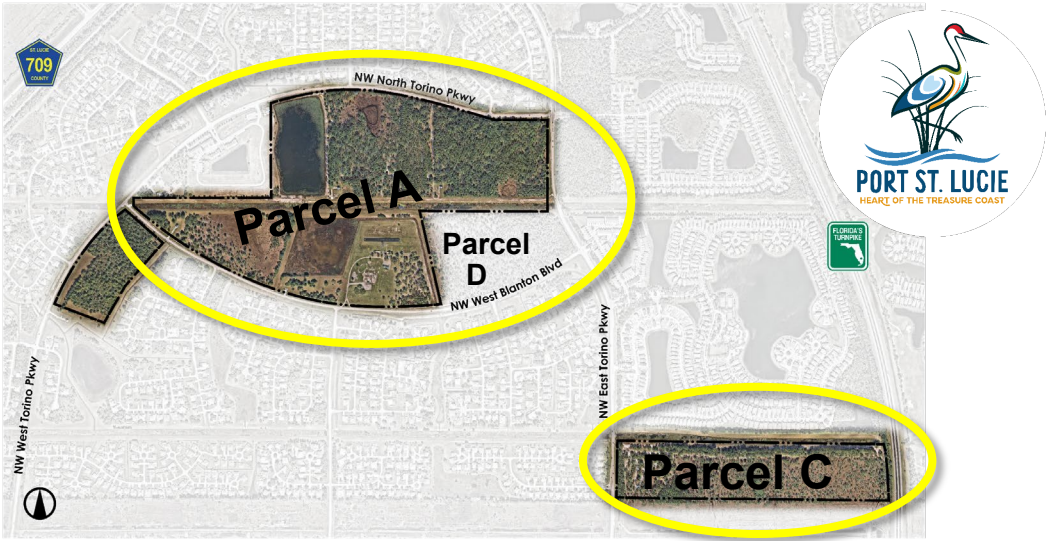
Level of need/priority = High Medium Low



# Amenities – Parcels A, C & D

In order of ranking, per community input and analysis

- |  |                                  |
|--|----------------------------------|
| 1. Paved multi-use trail and boardwalks          | 13. Baseball fields              |
| 2. Unpaved nature hiking trails                  | 14. Disc golf course             |
| 3. Destination playground and smaller playground | 15. Skatepark                    |
| 4. Picnic shelters; large and small              | 16. Beach volleyball courts      |
| 5. Multipurpose fields                           | 17. Baseball and softball fields |
| 6. Splash pad                                    | 18. Open lawn space              |
| 7. Covered basketball courts                     | 19. Fishing pier                 |
| 8. Pickleball courts                             | 20. Wi-Fi                        |
| 9. Tennis courts                                 | 21. Food truck area              |
| 10. Dog park                                     | 22. Kayak launch                 |
| 11. Restrooms                                    |                                  |
| 12. Exercise stations or fitness court           |                                  |



## PSLPRD 10-Year System Master Plan Needs Assessment

### Facilities Needs:

- WALKING AND HIKING TRAILS
- BIKE TRAILS
- NATURAL AREAS/ NATURE PARKS
- DOG PARKS
- OUTDOOR STAGE/ AMPHITHEATER
- FITNESS CENTER/ SPA/ INDOOR REC/GYM
- OUTDOOR POOL/AQUATICS
- SPRAY GROUNDS/ SPLASH PADS
- INDOOR POOL
- PICNIC SHELTERS/ PICNIC AREAS
- MULTI-PURPOSE ATHLETIC FIELDS
- IMPROVEMENTS TO EXISTING PARKS
- NEW PARKS

### Program Needs:

- ADULT FITNESS/WELLNESS
- NATURE PROGRAMS
- SUMMER CONCERTS
- SPECIAL EVENTS
- SENIOR PROGRAMS
- ADULT SPORTS PROGRAMS
- YOUTH SPORTS PROGRAMS
- CIRCUIT EXERCISE PROGRAMS
- YOUTH FITNESS AND WELLNESS PROGRAMS
- BEFORE AND AFTER SCHOOL PROGRAMS

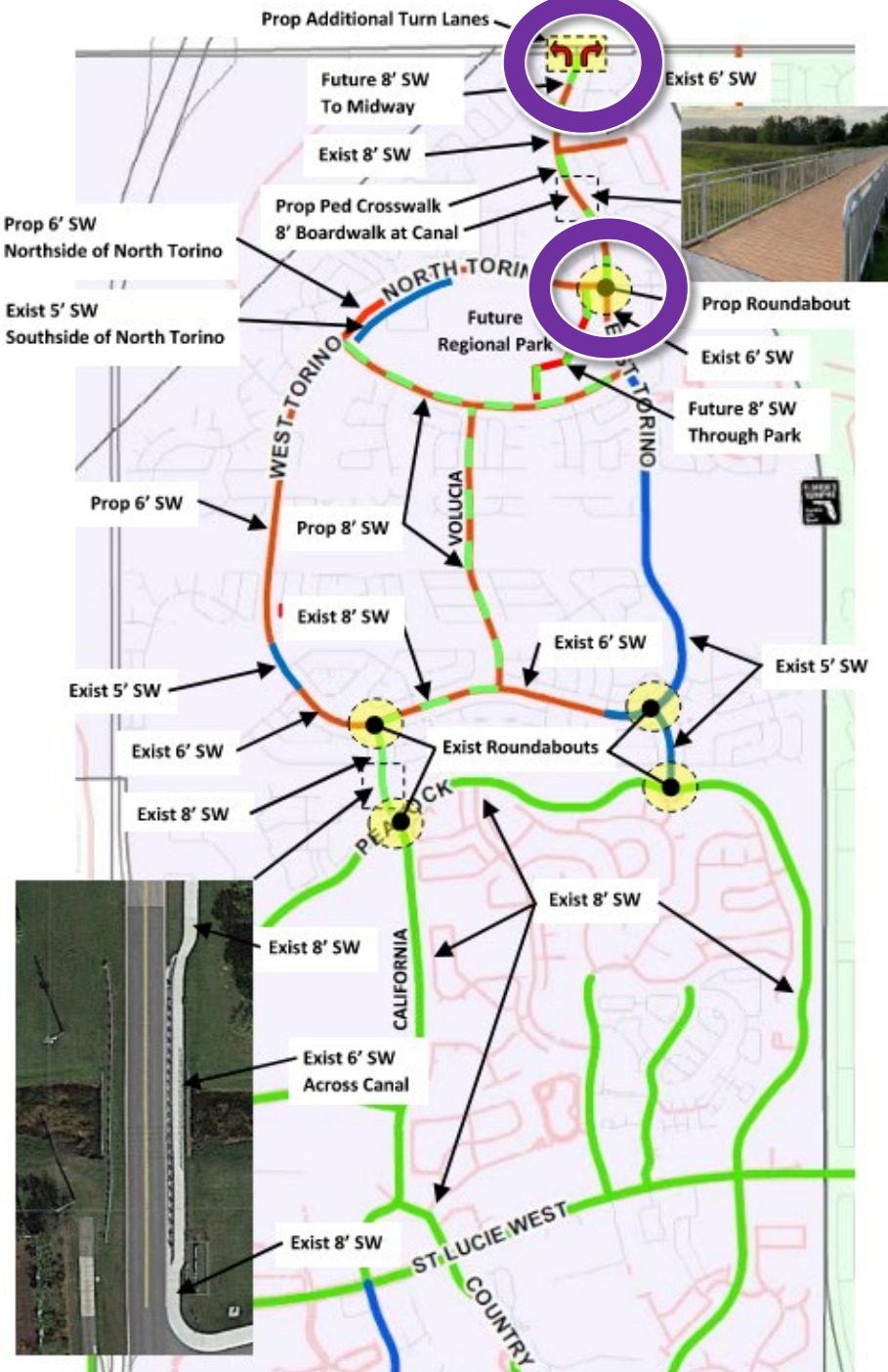
# Transportation Improvements

## City of Port St Lucie Planned Improvements nearby

- Volucia Trail pedestrian improvements
- North Torino/ East Torino roundabout
- Sidewalk improvements
- Intersection improvements at Midway Road

## Kimley-Horn Traffic Study Findings

- Addition of a second northbound left-turn lane and a second westbound left-turn lane at the intersection of Midway Road & Torino Parkway
- Conversion of the intersection of NW East Torino Parkway & NW North Torino Parkway from all-way stop controlled to a roundabout.

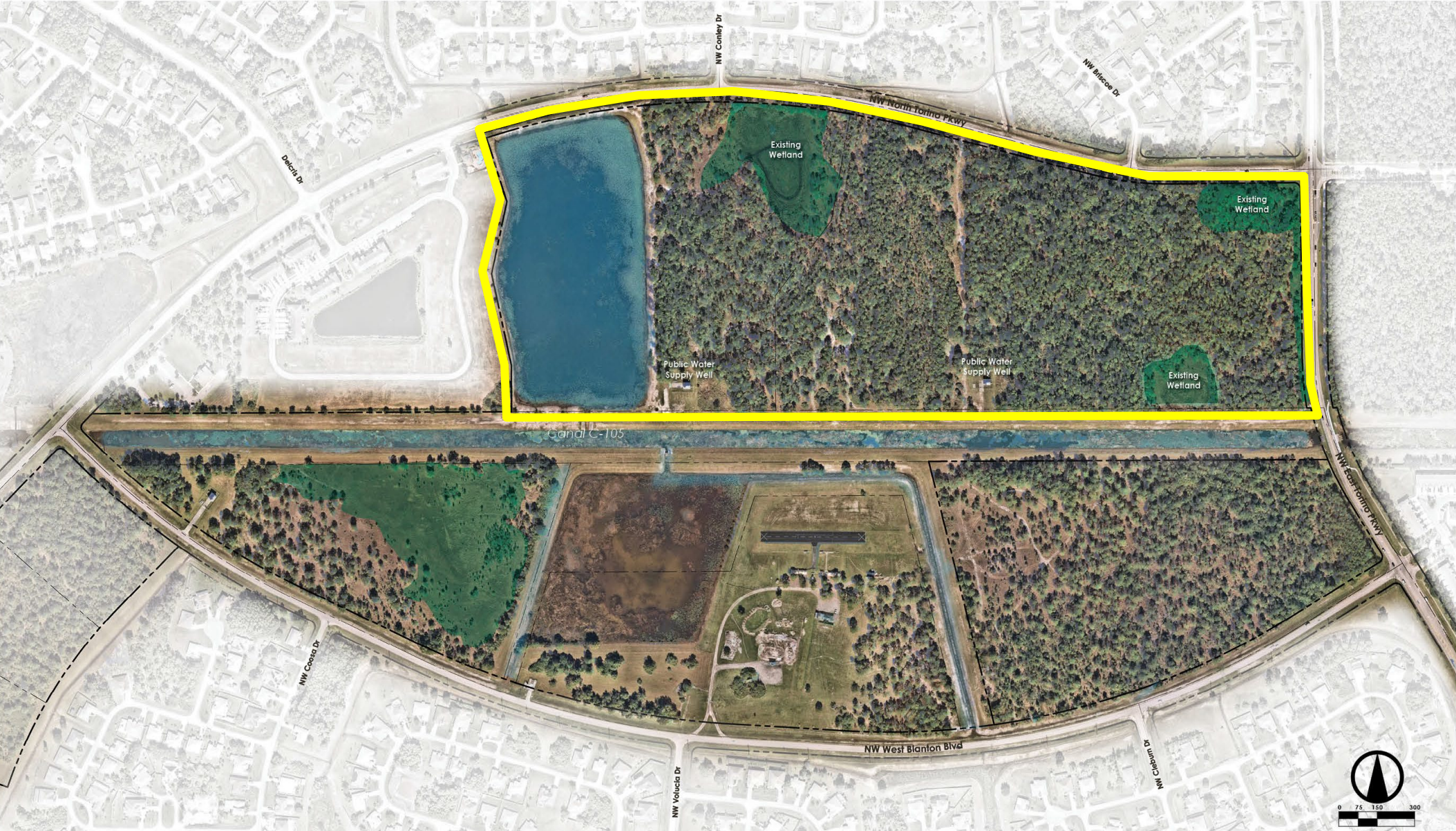


# 3

## Phase 1 Approval Request



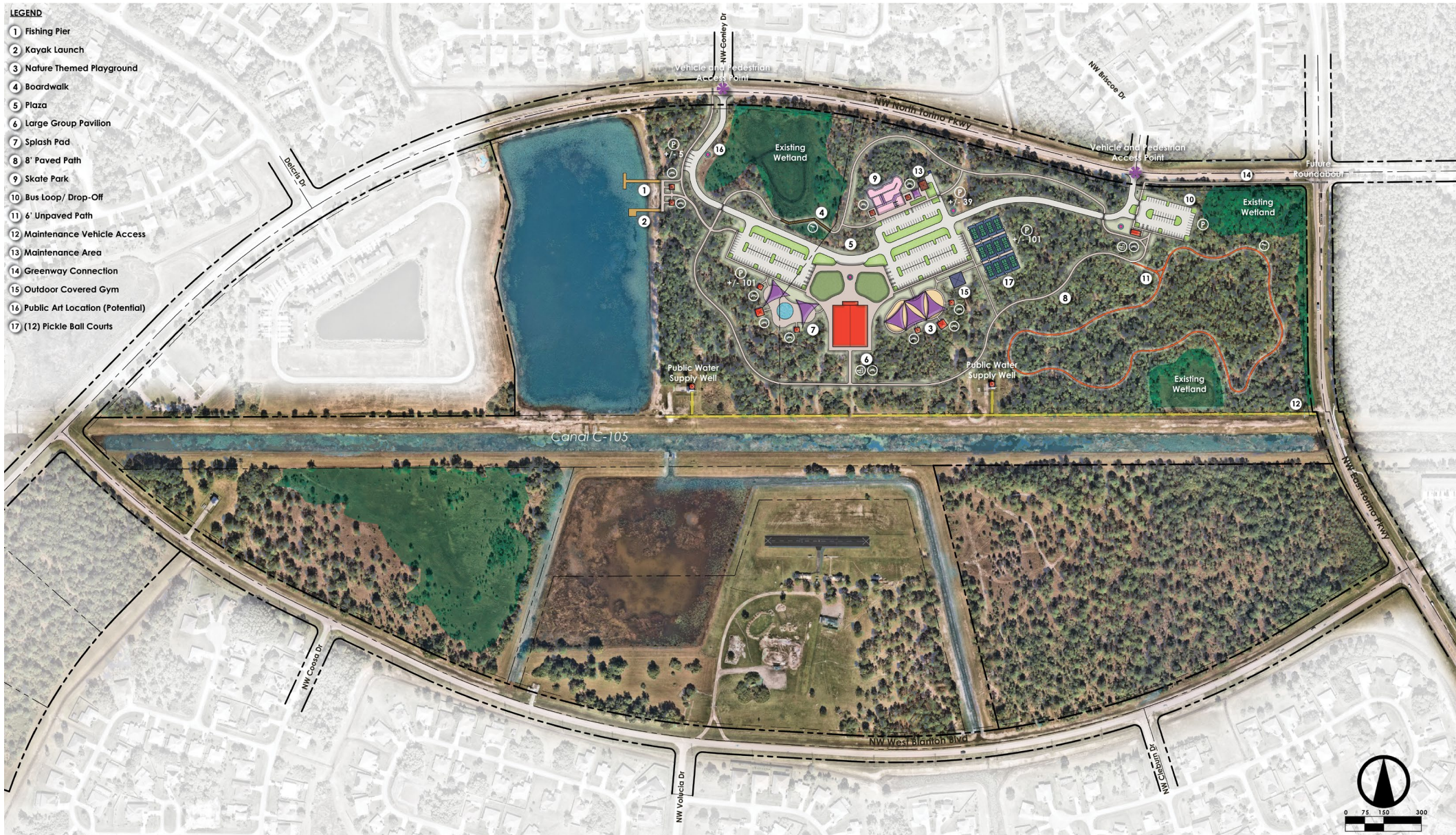
# TORINO REGIONAL PARK PARCEL 'A' – Limits of Funded Phase 1



# TORINO REGIONAL PARK CONCEPTUAL MASTER PLAN PARCEL 'A' – Funded Phase 1

## LEGEND

- 1 Fishing Pier
- 2 Kayak Launch
- 3 Nature Themed Playground
- 4 Boardwalk
- 5 Plaza
- 6 Large Group Pavilion
- 7 Splash Pad
- 8 8' Paved Path
- 9 Skate Park
- 10 Bus Loop/ Drop-Off
- 11 6' Unpaved Path
- 12 Maintenance Vehicle Access
- 13 Maintenance Area
- 14 Greenway Connection
- 15 Outdoor Covered Gym
- 16 Public Art Location (Potential)
- 17 (12) Pickle Ball Courts



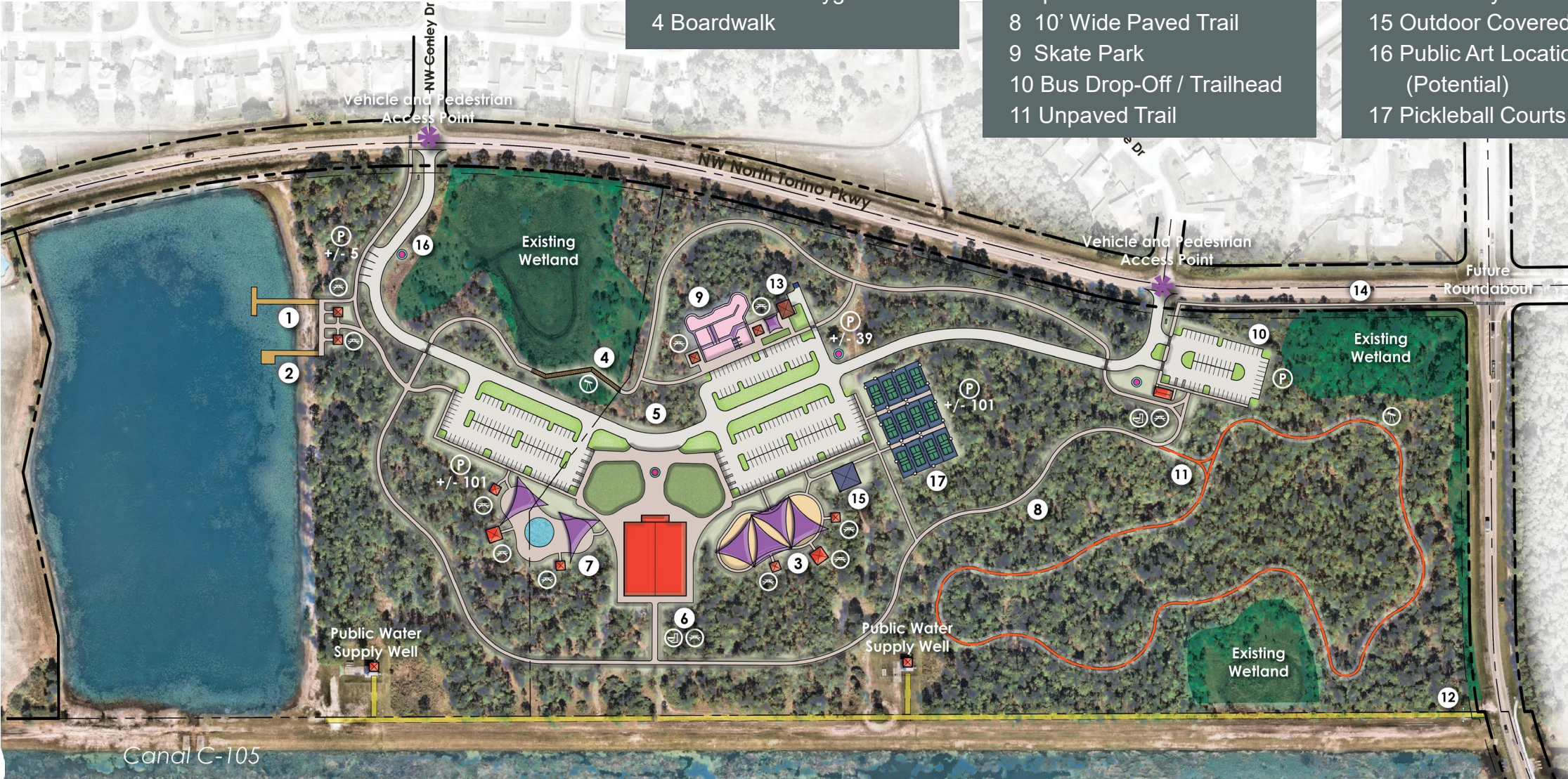


# Phase 1 Enlargement - Parcel A (North) - FUNDED

- 1 Fishing Pier
- 2 Kayak Launch
- 3 Destination Playground
- 4 Boardwalk

- 5 Plaza
- 6 Large Group Pavilion
- 7 Splash Pad
- 8 10' Wide Paved Trail
- 9 Skate Park
- 10 Bus Drop-Off / Trailhead
- 11 Unpaved Trail

- 12 Well Service Access
- 13 Maintenance Bldg
- 14 Greenway Connection
- 15 Outdoor Covered Gym
- 16 Public Art Location (Potential)
- 17 Pickleball Courts





# Amenities – Phase 1

In order of ranking, per community input and analysis



- |  |                                  |
|--|----------------------------------|
| 1. Paved multi-use trail and boardwalks          | 13. Baseball fields              |
| 2. Unpaved nature hiking trails                  | 14. Disc golf course             |
| 3. Destination playground and smaller playground | 15. Skatepark                    |
| 4. Picnic shelters; large & small                | 16. Beach volleyball courts      |
| 5. Multipurpose fields                           | 17. Baseball and softball fields |
| 6. Splash pad                                    | 18. Open lawn space              |
| 7. Covered basketball courts                     | 19. Fishing pier                 |
| 8. Pickleball courts                             | 20. Wi-Fi                        |
| 9. Tennis courts                                 | 21. Food truck area              |
| 10. Dog park                                     | 22. Kayak launch                 |
| 11. Restrooms                                    |                                  |
| 12. Exercise stations or fitness court           |                                  |

## PSLPRD 10-Year System Master Plan Needs Assessment

### Facilities Needs:

- WALKING AND HIKING TRAILS
- BIKE TRAILS
- NATURAL AREAS/ NATURE PARKS
- DOG PARKS
- OUTDOOR STAGE/ AMPHITHEATER
- FITNESS CENTER/ SPA/ INDOOR REC/GYM
- OUTDOOR POOL/AQUATICS
- SPRAY GROUNDS/ SPLASH PADS
- INDOOR POOL
- PICNIC SHELTERS/ PICNIC AREAS
- MULTI-PURPOSE ATHLETIC FIELDS
- IMPROVEMENTS TO EXISTING PARKS
- NEW PARKS

### Program Needs:

- ADULT FITNESS/WELLNESS
- NATURE PROGRAMS
- SUMMER CONCERTS
- SPECIAL EVENTS
- SENIOR PROGRAMS
- ADULT SPORTS PROGRAMS
- YOUTH SPORTS PROGRAMS
- CIRCUIT EXERCISE PROGRAMS
- YOUTH FITNESS AND WELLNESS PROGRAMS
- BEFORE AND AFTER SCHOOL PROGRAMS

# Phase 1

## Program and Opinion of Probable Cost

- Trailhead with Bus Drop-off / Parking Lot and Restroom / Shelter Pavilion
- Paved 10' Trail and Unpaved Trail Network
- Skate Park with Parking and Restroom / Shelter Pavilion
- Destination Playground with Picnic Shelters
- Large Group Pavilion with Catering Kitchen and Restrooms
- Splash Pad with Picnic Shelters
- Circuit-Style Outdoor Gym with Shade Covering
- Pickleball Courts
- Kayak Launch and Accessible Fishing Pier
- Maintenance Facility
- Parking Lots and Internal Circulation for all Facilities
- Locations for Public Art

~\$20.5 Million total for Phase 1  
(Anticipated cost for design, permitting, construction  
with 15% contingency)

# 4

## Inspiration Images



# Destination Playgrounds

Photos of Kimley-Horn Projects



Eden Road Playground - Washington



Conceptual All Inclusive Playground



Denver Premium Outlets Playground - Colorado



Regatta Park Playground - Florida



Lynn Haven Park - Florida



Denver Premium Outlets Playground - Colorado

# Destination Playgrounds

Photos of Kimley-Horn Projects



GT Bray Playground - Texas



GT Bray Playground - Texas



The Bay Playground - Florida



Legacy Trail Playground - Florida



Massey Park Playground - Florida

# Destination Playgrounds

Earthscape - Michigan



Earthscape - Ohio



Earthscape - Oregon



Kompan - Seattle



Kompan - Texas

# Destination Playgrounds

Landscape Structures - California



Landscape Structures - Minnesota



Landscape Structures - Iowa





# Splash Pads



Empex Watertoys - Texas



Welleby Park, Kimley-Horn - Florida



California Waters - California



Aquatix - New Mexico

# Skate Parks

Photos of Kimley-Horn Projects

Eden Road Playground - Washington



Conceptual Skate Park Design, FL



Escondido, Washington

# Skate Parks

Eden Road Playground - Washington



# Pavilion Inspiration

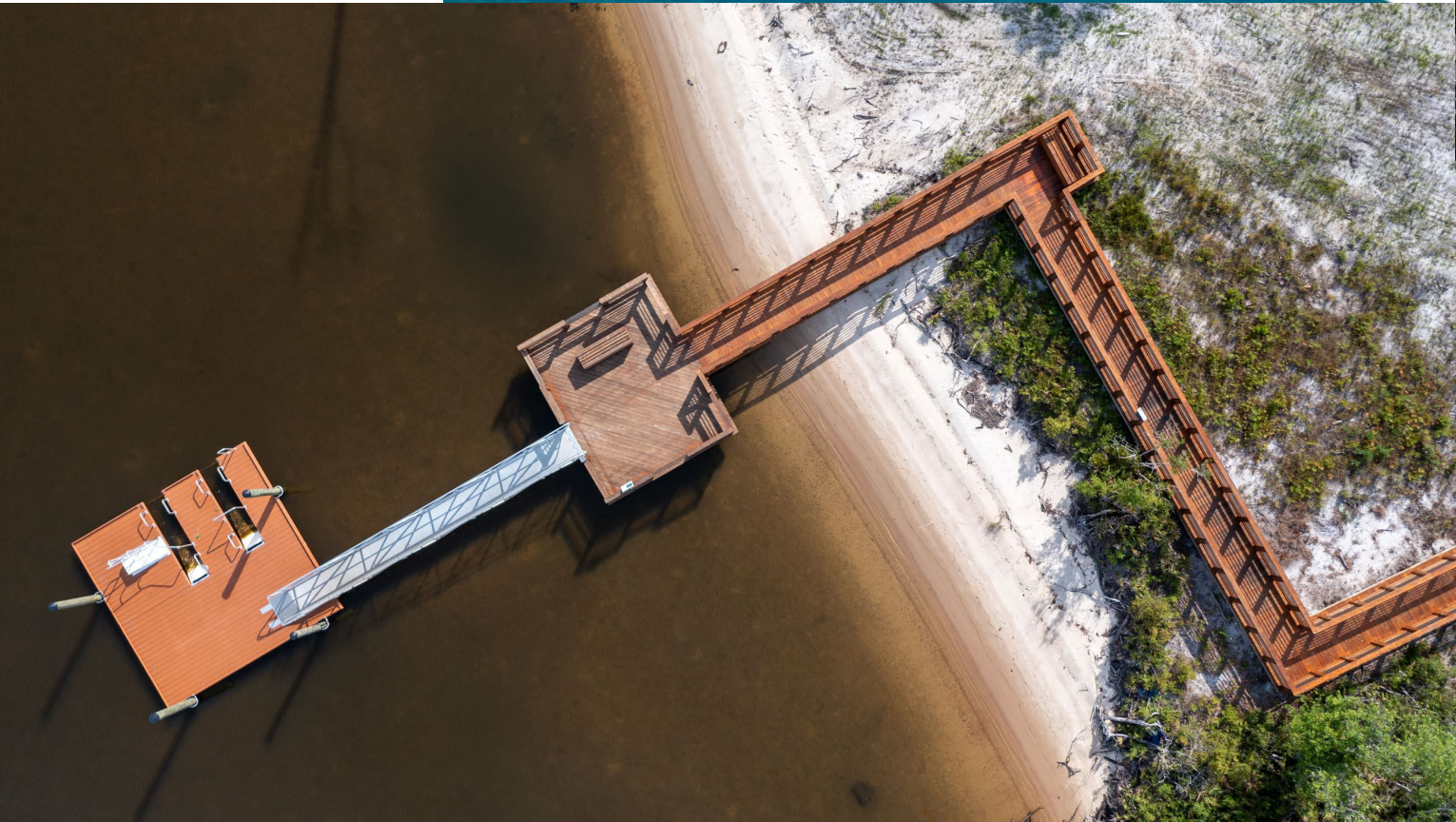


# Public Art Inspiration Elements



# Park Inspiration Elements

Photos of Kimley-Horn Projects



Thank you!



Kimley»»Horn