

EXTERIOR PAINT LEGEND

<div></div>	P1 - BASE (LIGHT) SW 6253 OLYMPUS WHITE	<div></div>	P4 - ACCENT SW 6811 HONORABLE BLUE
<div></div>	P2 - ACCENT (DARK) SW 7066 GRIZZLE GRAY	<div></div>	P5 - ACCENT SW 6895 LAUGHING ORANGE
<div></div>	P3 - ACCENT SW 6796 BLUE PLATE		

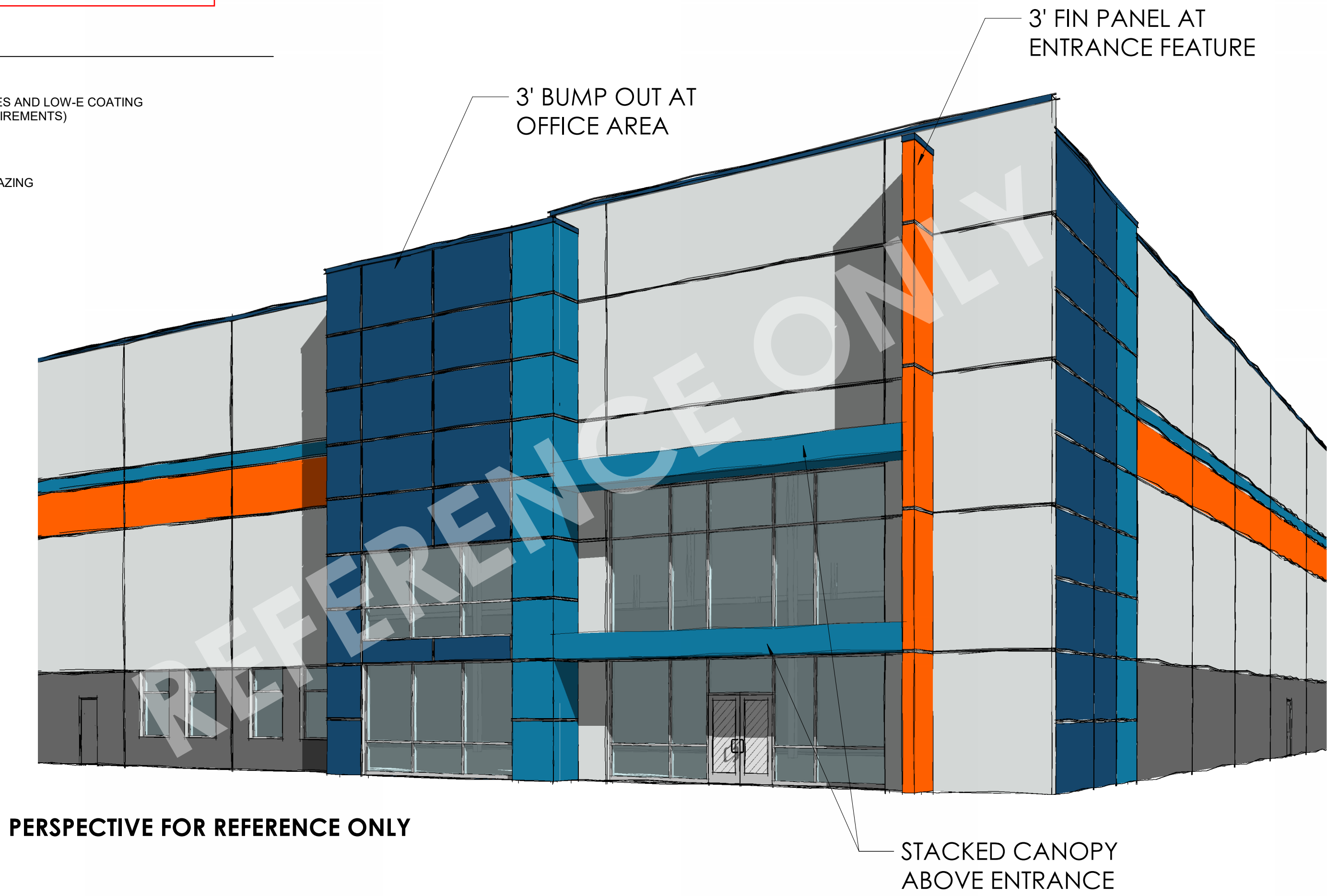
Color selections are not final and may change pending owners final approval

GLAZING LEGEND

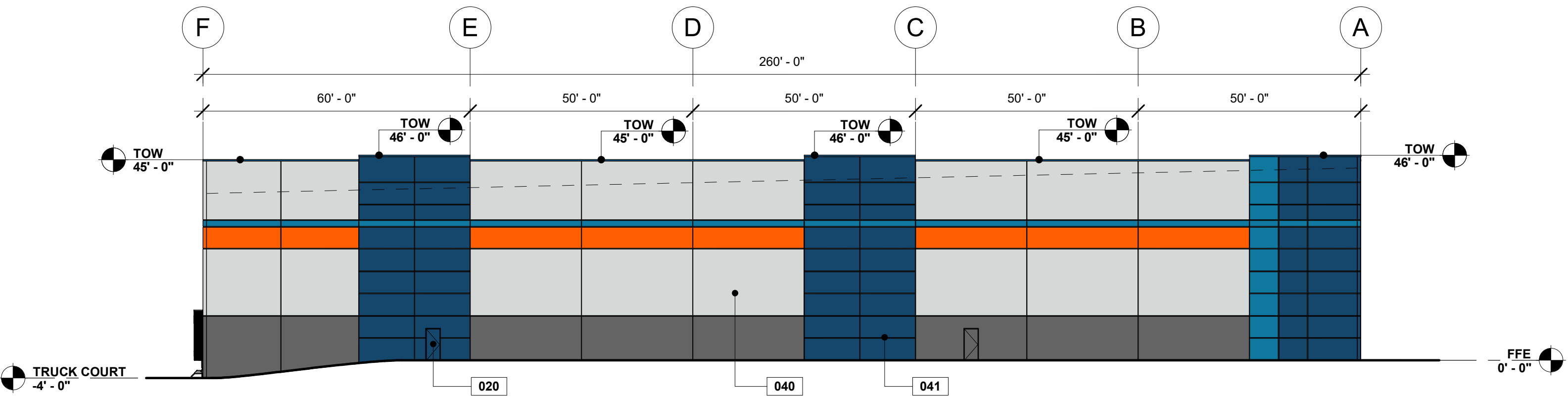
<div></div>	GL-01 - INSULATED GLAZING UNIT 1 INCH THICK WITH 1/4" THICK CLEAR LITES AND LOW-E COATING (SEE ENERGY CALCULATIONS FOR REQUIREMENTS)
<div></div>	GL-02 - TEMPERED SAFETY GLAZING TYPE GL-01 WITH TEMPERED SAFETY GLAZING
<div></div>	GL-03 - SPANDREL GLAZING TYPE GL-01 WITH SPANDREL GLAZING

SHEET NOTES

- 010 MAIN BUILDING ENTRANCE.
- 020 EXTERIOR DOOR FOR EGRESS AND/OR EMERGENCY FIRE DEPARTMENT ACCESS.
- 021 CONCRETE EXTERIOR DRIVE-IN RAMP.
- 022 SECTIONAL OVERHEAD DRIVE-IN DOOR.
- 023 SECTIONAL OVERHEAD LOADING DOCK DOOR.
- 024 GALVANIZED STEEL STAIR WITH GUARDRAIL AND HANDRAIL.
- 030 GLAZING AT BUILDING ENTRANCE.
- 031 CANOPY AT BUILDING ENTRANCE.
- 040 CONCRETE PANEL PAINTED WITH MEDIUM TEXTURE PAINT.
- 041 ARCHITECTURAL PANEL REVEAL.
- 047 FIN PANEL FEATURE.
- 050 CLERESTORY WINDOW.
- 052 SCUPPER BOX AND DOWNSPOUT.



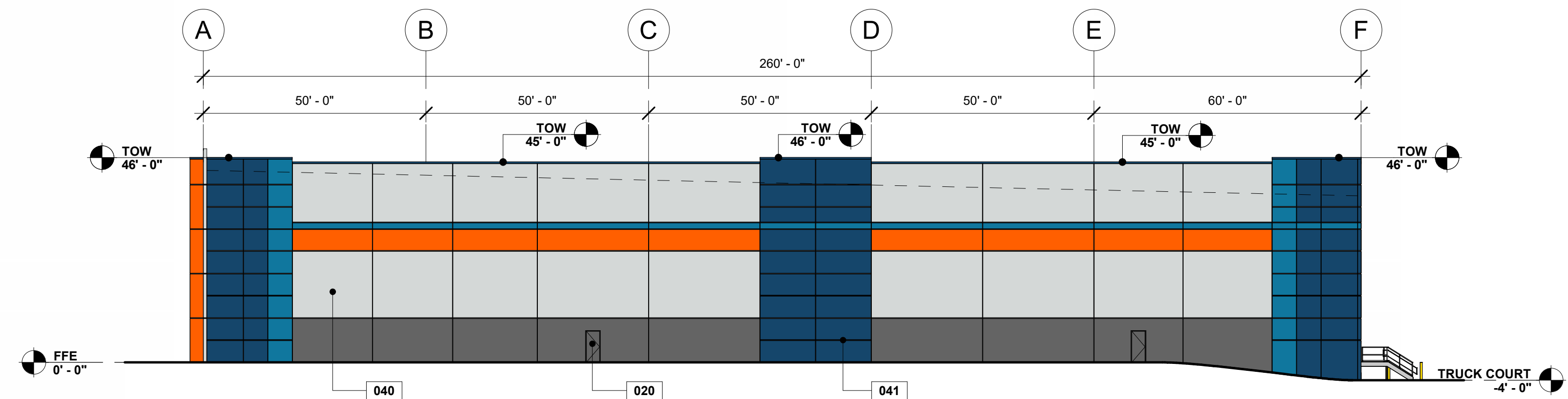
PERSPECTIVE FOR REFERENCE ONLY



WEST ELEVATION PAINT SCHEME

SCALE: 3/64" = 1'-0"

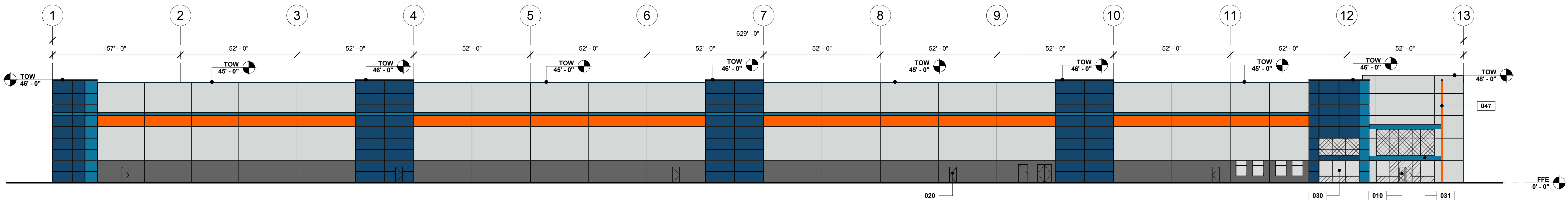
4



EAST ELEVATION PAINT SCHEME

SCALE: 3/64" = 1'-0"

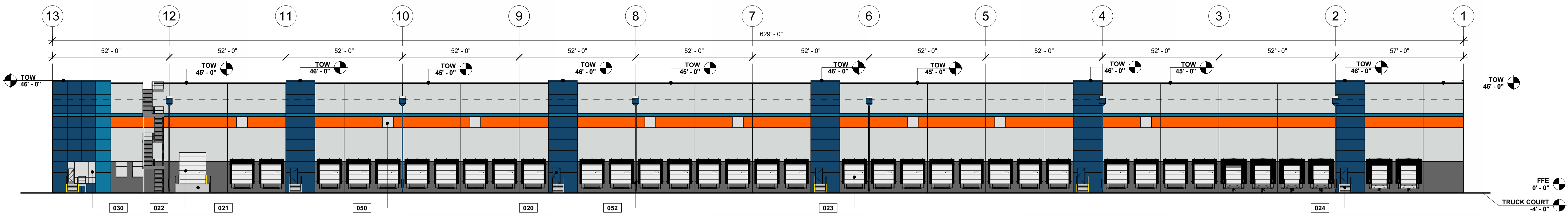
3



SOUTH ELEVATION PAINT SCHEME

SCALE: 3/64" = 1'-0"

2



NORTH ELEVATION PAINT SCHEME

SCALE: 3/64" = 1'-0"

1

This conceptual design is based upon a preliminary review of entitlement requirements and on unverified and possibly incomplete site and/or building information, and is intended merely to assist in exploring how the project might be developed.

SCALE 3/64" = 1'-0"



CONCEPTUAL ELEVATIONS

MDI PROJECT MARLIN
SW TOM MACKIE BLVD, PORT ST. LUCIE, FL 34987
PS051-24 | NE294 | 10/31/24 | DRAWN BY: MM

