

STARS AND STRIPES IN THE PARK

BEING A REPLAT OF ALL OF PARCEL 25B ACCORDING TO SOUTHERN GROVE PLAT NO. 13, AS RECORDED IN PLAT BOOK 74, PAGE 10, PUBLIC RECORDS OF ST. LUCIE COUNTY, FLORIDA, LYING IN SECTION 22, TOWNSHIP 37 SOUTH, RANGE 39 EAST, THE CITY OF PORT ST. LUCIE, ST. LUCIE COUNTY, FLORIDA.

THIS INSTRUMENT PREPARED BY
RONNIE L. FURNISS
OF
CAULFIELD AND WHEELER, INC.
SURVEYORS – ENGINEERS – PLANNERS
7900 GLADES ROAD, SUITE 100
BOCA RATON, FLORIDA 33434 – (561)392-1991
CERTIFICATE OF AUTHORIZATION NO. LB3591

PLAT BOOK _____
PAGE _____
SHEET 1 OF 8

LEGAL DESCRIPTION:

KNOW ALL MEN BY THESE PRESENTS THAT THE CITY OF PORT ST. LUCIE, A MUNICIPAL CORPORATION OF THE STATE OF FLORIDA, OWNER OF THE LAND SHOWN HEREON AS "STARS AND STRIPES IN THE PARK", BEING A REPLAT OF ALL OF PARCEL 25B ACCORDING TO SOUTHERN GROVE PLAT NO. 13, AS RECORDED IN PLAT BOOK 74, PAGE 10, PUBLIC RECORDS OF ST. LUCIE COUNTY, FLORIDA, BEING MORE PARTICULARLY DESCRIBED AS FOLLOWS

ALL OF PARCEL 25B ACCORDING TO SOUTHERN GROVE PLAT NO. 13, AS RECORDED IN PLAT BOOK 74, PAGE 10, PUBLIC RECORDS OF ST. LUCIE COUNTY, FLORIDA.

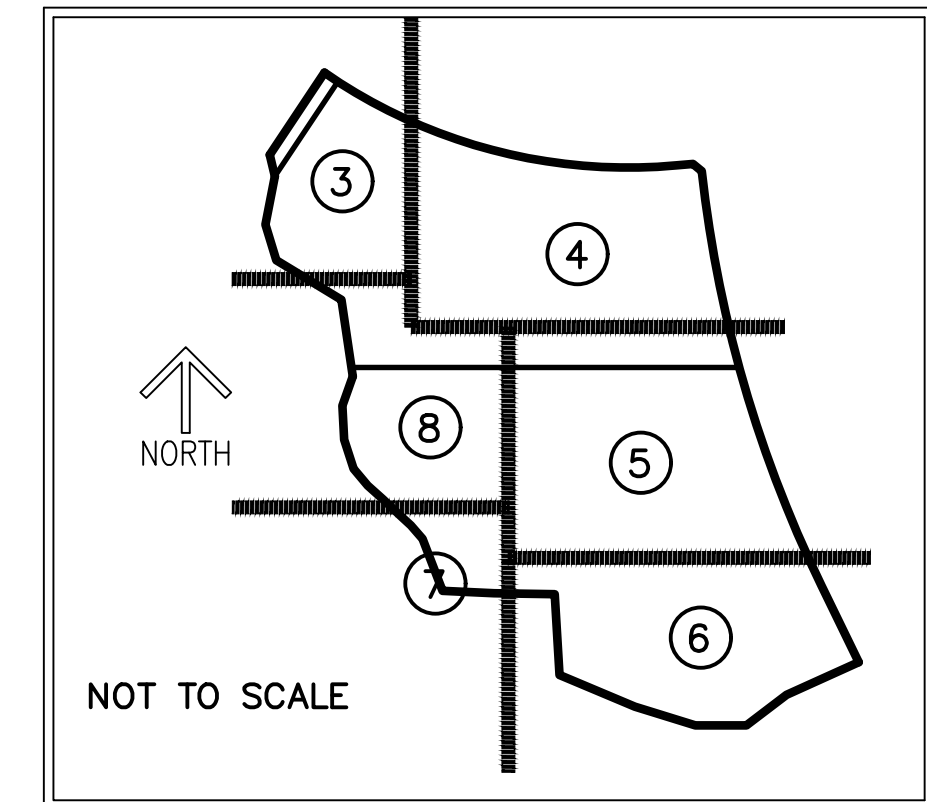
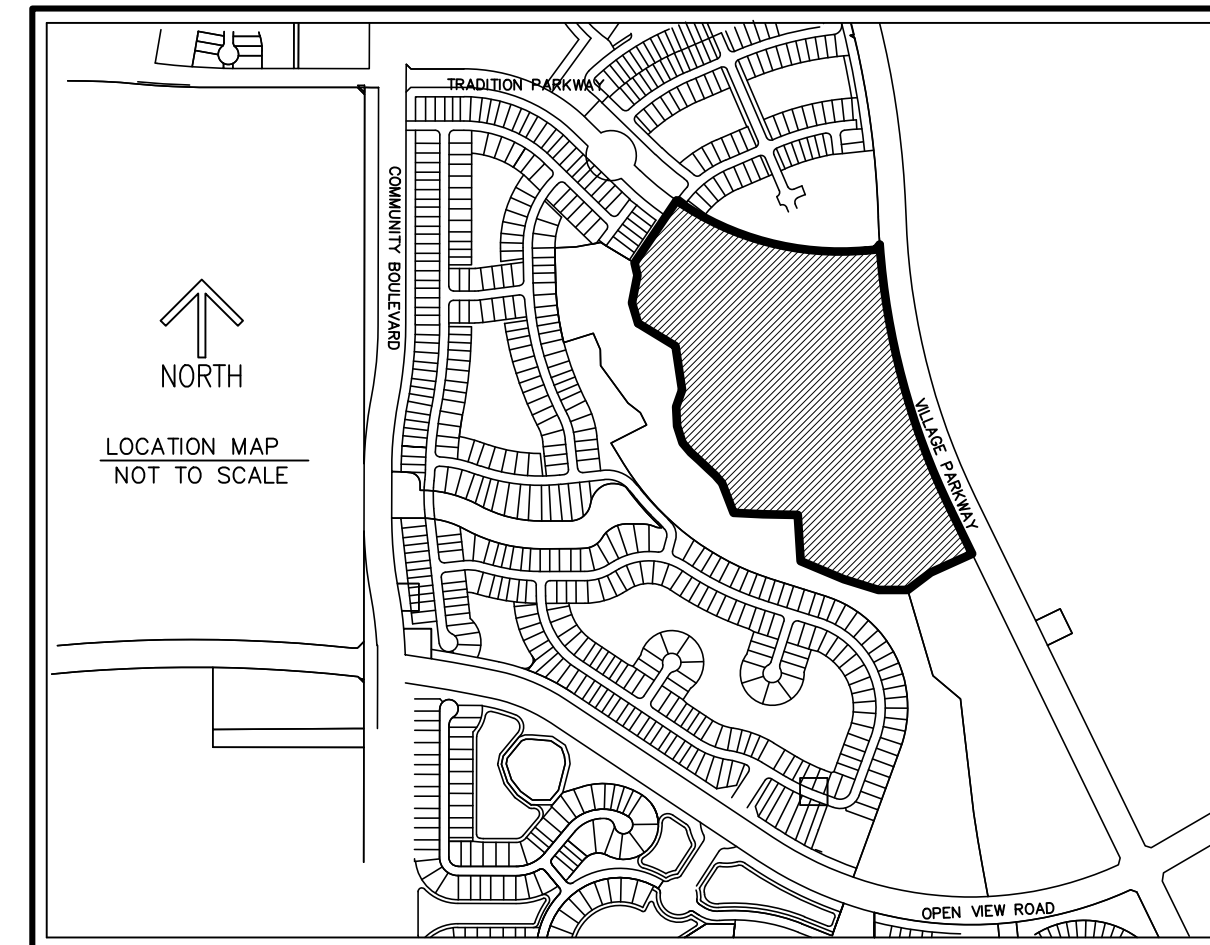
CONTAINING 47.515 ACRES MORE OR LESS.

SAID LANDS SITUATE IN THE CITY OF PORT ST. LUCIE, ST. LUCIE COUNTY, FLORIDA.

CERTIFICATE OF OWNERSHIP & DEDICATIONS:

HAVE CAUSED SAID LANDS TO BE SURVEYED AND PLATTED AS SHOWN HEREON AND HEREBY DEDICATES AS FOLLOWS:

1. PARCEL 1, AS SHOWN HEREON, IS HEREBY RESERVED FOR THE CITY OF PORT ST. LUCIE, A MUNICIPAL CORPORATION OF THE STATE OF FLORIDA, FOR THE BENEFIT OF THE PUBLIC FOR PARK AND RECREATION USES.
2. PARCEL 2, AS SHOWN HEREON, IS HEREBY RESERVED FOR THE CITY OF PORT ST. LUCIE, A MUNICIPAL CORPORATION OF THE STATE OF FLORIDA.
3. PARCEL 3, AS SHOWN HEREON, IS HEREBY RESERVED BY THE CITY OF PORT ST. LUCIE, A MUNICIPAL CORPORATION OF THE STATE OF FLORIDA, FOR THE BENEFIT OF THE PUBLIC FOR PARK AND RECREATION USES.
4. THE MULTI PURPOSE PATHWAY EASEMENT (MPPE), AS SHOWN HEREON IS HEREBY DEDICATED TO THE SOUTHERN GROVE COMMUNITY DEVELOPMENT DISTRICT NO. 5, A COMMUNITY DEVELOPMENT DISTRICT ESTABLISHED IN ACCORDANCE WITH CHAPTER 190, FLORIDA STATUTES ACTING FOR ITSELF AND ON BEHALF OF EACH OF THE OTHER "DISTRICTS" AS DEFINED IN THE SECOND AMENDED AND RESTATED DISTRICT INTERLOCAL AGREEMENT DATED AS OF JULY 9, 2013, AND RECORDED IN OFFICIAL RECORDS BOOK 3539, PAGES 672-713, OF THE PUBLIC RECORDS OF ST. LUCIE COUNTY, FLORIDA, AS AMENDED, AND IS THE MAINTENANCE OBLIGATION OF SAID SOUTHERN GROVE COMMUNITY DEVELOPMENT DISTRICT NO. 5, ITS SUCCESSORS AND ASSIGNS, FOR THE CONSTRUCTION OF AND THE BENEFIT OF THE PUBLIC FOR ACCESS AND RECREATION.
5. THE WATER MANAGEMENT TRACT S.M.T. 1 AS SHOWN HEREON, IS HEREBY DEDICATED TO AND ARE THE MAINTENANCE RESPONSIBILITIES OF THE SOUTHERN GROVE COMMUNITY DEVELOPMENT DISTRICT NO. 5, A COMMUNITY DEVELOPMENT DISTRICT, ITS SUCCESSORS AND ASSIGNS, FOR THE PURPOSE OF PROVIDING DRAINAGE AND SURFACE WATER MANAGEMENT. A DRAINAGE AND IRRIGATION EASEMENT TOGETHER WITH AN INGRESS AND EGRESS EASEMENT OVER SAID WATER MANAGEMENT TRACT IS HEREBY DEDICATED TO TRADITION COMMUNITY DEVELOPMENT DISTRICT NO. 1, A COMMUNITY DEVELOPMENT DISTRICT ESTABLISHED IN ACCORDANCE WITH CHAPTER 190, FLORIDA STATUTES, ITS SUCCESSORS AND ASSIGNS FOR THE RIGHT TO DRAW WATER FROM AND DISCHARGE WATER TO SAID WATER MANAGEMENT TRACT.
6. THE LAKE MAINTENANCE EASEMENT (LME), AS SHOWN HEREON, IS HEREBY DEDICATED TO THE SOUTHERN GROVE COMMUNITY DEVELOPMENT DISTRICT NO. 5, A COMMUNITY DEVELOPMENT DISTRICT, ITS SUCCESSORS AND ASSIGNS, FOR THE PURPOSE OF ACCESS TO AND THE MAINTENANCE OF THE WATER MANAGEMENT TRACTS, AND IS THE MAINTENANCE RESPONSIBILITIES OF SAID SOUTHERN GROVE COMMUNITY DEVELOPMENT DISTRICT NO. 5, ITS SUCCESSORS AND ASSIGNS.
7. ALL PLATTED UTILITY EASEMENTS (UE), SHALL ALSO BE EASEMENTS FOR THE CONSTRUCTION, INSTALLATION, MAINTENANCE, AND OPERATION OF CABLE TELEVISION SERVICES; PROVIDED, HOWEVER, NO SUCH CONSTRUCTION, INSTALLATION, MAINTENANCE, AND OPERATION OF CABLE TELEVISION SERVICES SHALL INTERFERE WITH THE FACILITIES AND SERVICES OF AN ELECTRIC, TELEPHONE, GAS, OR OTHER PUBLIC UTILITY. IN THE EVENT A CABLE TELEVISION COMPANY DAMAGES THE FACILITIES OF A PUBLIC UTILITY, IT SHALL BE SOLELY RESPONSIBLE FOR THE DAMAGES. THIS SECTION SHALL NOT APPLY TO THOSE PRIVATE EASEMENTS GRANTED TO OR OBTAINED BY A PARTICULAR ELECTRIC, TELEPHONE, GAS, OR OTHER PUBLIC UTILITY. SUCH CONSTRUCTION, INSTALLATION, MAINTENANCE, AND OPERATION SHALL COMPLY WITH THE NATIONAL ELECTRICAL SAFETY CODE AS ADOPTED BY THE FLORIDA PUBLIC SERVICE COMMISSION. THE CITY OF PORT ST. LUCIE, FLORIDA, ITS SUCCESSORS AND/OR ASSIGNS, SHALL HAVE THE RIGHT TO USE ALL PLATTED UTILITY EASEMENTS FOR ACCESS TO, INSTALLATION AND MAINTENANCE OF PUBLIC UTILITIES AND FACILITIES INCLUDING, BUT NOT LIMITED TO, WATER AND WASTEWATER LINES AND APPURTENANT FACILITIES. THE CITY OF PORT ST. LUCIE, FLORIDA SHALL NOT BE RESPONSIBLE FOR ANY MAINTENANCE OBLIGATIONS FOR SAID EASEMENT EXCEPT AS SHALL RELATE TO THE SERVICING OF SUCH PUBLIC UTILITIES BY THE CITY OF PORT ST. LUCIE, FLORIDA.
8. THE DRAINAGE EASEMENT AS SHOWN HEREON, IS HEREBY DEDICATED TO AND ARE THE MAINTENANCE RESPONSIBILITIES OF THE SOUTHERN GROVE COMMUNITY DEVELOPMENT DISTRICT NO. 5, A COMMUNITY DEVELOPMENT DISTRICT, ITS SUCCESSORS AND ASSIGNS, FOR THE PURPOSE OF ACCESS TO AND THE INSTALLATION OF DRAINAGE FACILITIES FOR THE PURPOSE OF PROVIDING DRAINAGE AND SURFACE WATER MANAGEMENT.



CLERK'S RECORDING CERTIFICATE:

STATE OF FLORIDA
COUNTY OF ST. LUCIE

I, MICHELLE R. MILLER, CLERK OF THE CIRCUIT COURT OF ST. LUCIE COUNTY, FLORIDA, DO HEREBY CERTIFY THAT THIS PLAT HAS BEEN EXAMINED, AND THAT IT COMPLIES IN FORM WITH ALL THE REQUIREMENTS OF THE LAWS OF FLORIDA PERTAINING TO MAPS AND PLATS, AND THAT THIS PLAT HAS BEEN FILED FOR RECORD IN PLAT BOOK _____, PAGE(S) _____ OF THE PUBLIC RECORDS OF ST. LUCIE COUNTY, FLORIDA, THIS _____ DAY OF _____, 2023.

MICHELLE R. MILLER
CLERK OF THE CIRCUIT COURT
ST. LUCIE COUNTY, FLORIDA

SURVEY NOTES:

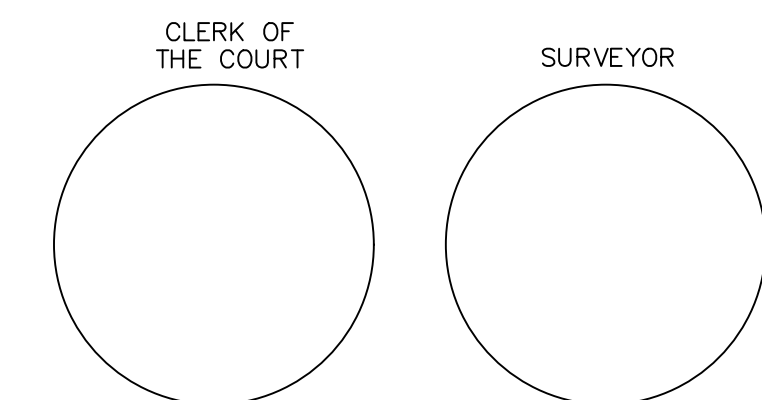
1. BEARINGS SHOWN HEREON ARE RELATIVE TO A RECORD PLAT BEARING OF NORTH 33°37'18" EAST ALONG THE WEST LINE OF PARCEL 25B AS SHOWN ON THE PLAT SOUTHERN GROVE PLAT NO. 13, AS RECORDED IN PLAT BOOK 74, PAGE 10 OF THE PUBLIC RECORDS OF ST. LUCIE COUNTY, FLORIDA.
2. LINES INTERSECTING CURVES ARE NON-RADIAL UNLESS SHOWN OTHERWISE NOTED (R) FOR RADIAL.
3. NOTICE: THIS PLAT, AS RECORDED IN ITS GRAPHIC FORM, IS THE OFFICIAL DEPICTION OF THE SUBDIVIDED LANDS DESCRIBED HEREIN AND WILL IN NO CIRCUMSTANCES BE SUPPLANTED IN AUTHORITY BY ANY OTHER GRAPHIC OR DIGITAL FORM OF THE PLAT.
4. NOTICE: THERE MAY BE ADDITIONAL RESTRICTIONS THAT ARE NOT RECORDED ON THIS PLAT THAT MAY BE FOUND IN THE PUBLIC RECORDS OF ST. LUCIE COUNTY.
5. NOTE: THIS PLAT HAS BEEN REVIEWED FOR CONFORMITY TO CHAPTER 177, PART 1 FLORIDA STATUTES BY A PROFESSIONAL SURVEYOR AND MAPPER EMPLOYED BY OR UNDER CONTRACT WITH THE CITY OF PORT ST. LUCIE.

SURVEYOR'S CERTIFICATE:

STATE OF FLORIDA
COUNTY OF ST. LUCIE

THIS IS TO CERTIFY THAT THE PLAT AS SHOWN HEREON IS A TRUE AND CORRECT REPRESENTATION OF A SURVEY MADE UNDER MY RESPONSIBLE DIRECTION AND SUPERVISION AND THAT SAID SURVEY IS ACCURATE TO THE BEST OF MY KNOWLEDGE AND BELIEF AND THAT PERMANENT REFERENCE MONUMENTS (P.R.M.'S) HAVE BEEN SET AND THAT PERMANENT CONTROL POINTS (P.C.P.'S) AND LOT CORNERS WILL BE SET UNDER THE GUARANTEES POSTED WITH THE CITY COUNCIL OF PORT ST. LUCIE FOR THE REQUIRED IMPROVEMENTS, AND FURTHER, THAT THE SURVEY DATA COMPLIES WITH ALL OF THE REQUIREMENTS OF CHAPTER 177, FLORIDA STATUTES, AS AMENDED, AND IN ACCORDANCE WITH THE SURVEYING STANDARDS CONTAINED WITHIN CHAPTER 5J-17, FLORIDA ADMINISTRATIVE CODE, SET FORTH BY THE FLORIDA BOARD OF SURVEYORS AND MAPPERS PURSUANT TO SECTION 472.027, FLORIDA STATUTES, AND ORDINANCES OF THE CITY OF PORT ST. LUCIE, FLORIDA. THIS _____ DAY OF _____, 2023.

RONNIE L. FURNISS
PROFESSIONAL SURVEYOR MAPPER #6272
STATE OF FLORIDA,
CAULFIELD AND WHEELER, INC.
SURVEYORS – ENGINEERS – PLANNERS
7900 GLADES ROAD, SUITE 100
(561)392-1991
CERTIFICATION OF AUTHORIZATION NO.
LB 3591



CERTIFICATE OF OWNERSHIP & DEDICATION:

IN WITNESS WHEREOF, THE CITY OF PORT ST. LUCIE, A MUNICIPAL CORPORATION OF THE STATE OF FLORIDA HAS CAUSED THESE PRESENTS TO BE SIGNED BY ITS _____ THIS _____ DAY OF _____, 2023.

THE CITY OF PORT ST. LUCIE, A MUNICIPAL CORPORATION OF THE STATE OF FLORIDA.

BY: _____ SIGNATURE
PRINTED NAME _____
TITLE _____ PRINTED NAME

SIGNATURE

PRINTED NAME

ACKNOWLEDGEMENT:

STATE OF FLORIDA
COUNTY OF ST. LUCIE)

THE FOREGOING INSTRUMENT WAS ACKNOWLEDGED BEFORE ME BY MEANS OF ___ PHYSICAL PRESENCE OR ___ ONLINE NOTARIZATION, THIS _____ DAY OF _____, 2023, BY _____ OF THE CITY OF PORT ST. LUCIE, A MUNICIPAL CORPORATION OF THE STATE OF FLORIDA, ON BEHALF OF THE CITY, WHO IS ___ PERSONALLY KNOWN TO ME OR HAS PRODUCED _____ AS IDENTIFICATION.

WITNESS MY HAND AND OFFICIAL SEAL THIS _____ DAY OF _____, 2023.

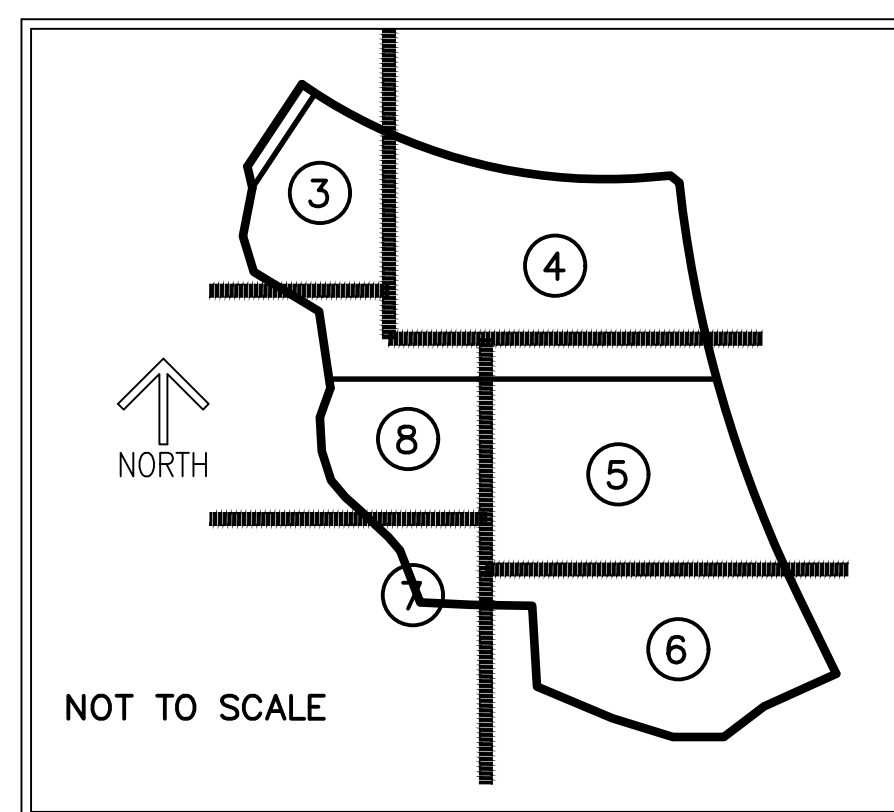
COMMISSION NO. & EXPIRATION DATE NOTARY PUBLIC, STATE OF FLORIDA

PRINT NAME: _____

PSLUSD PROJECT NO. 5218C
CITY OF PORT ST. LUCIE
PROJECT NO. P22-224

STARS AND STRIPES IN THE PARK

BEING A REPLAT OF ALL OF PARCEL 25B ACCORDING TO SOUTHERN GROVE PLAT NO. 13,
AS RECORDED IN PLAT BOOK 74, PAGE 10, PUBLIC RECORDS OF ST. LUCIE COUNTY,
FLORIDA, LYING IN SECTION 22, TOWNSHIP 37 SOUTH, RANGE 39 EAST, THE CITY OF
PORT ST. LUCIE, ST. LUCIE COUNTY, FLORIDA.



THIS INSTRUMENT PREPARED BY
RONNIE L. FURNISS
OF
CAULFIELD and WHEELER, INC.
SURVEYORS - ENGINEERS - PLANNERS
7900 GLADES ROAD, SUITE 100
BOCA RATON, FLORIDA 33434 - (561)392-1991
CERTIFICATE OF AUTHORIZATION NO. LB3591

ACCEPTANCE OF DEDICATION:

THE SOUTHERN GROVE COMMUNITY DEVELOPMENT DISTRICT NO. 5, A COMMUNITY DEVELOPMENT DISTRICT ESTABLISHED IN ACCORDANCE WITH CHAPTER 190, FLORIDA STATUTES ("DISTRICT NO. 5"), ACTING FOR ITSELF AND ON BEHALF OF EACH OF THE OTHER "DISTRICTS" AS DEFINED IN THE SECOND AMENDED AND RESTATED DISTRICT INTERLOCAL AGREEMENT DATED AS OF JULY 9, 2013, AND RECORDED AT OFFICIAL RECORDS BOOK 3539, PAGES 672-713, OF THE PUBLIC RECORDS OF ST. LUCIE COUNTY, FLORIDA, AS AMENDED, HEREBY ACCEPTS ALL DEDICATIONS SET FORTH UPON THE WITHIN PLAT AND SPECIFICALLY DEDICATED TO DISTRICT NO. 5, PROVIDED, HOWEVER, THAT ACCEPTANCE OF SUCH DEDICATIONS AND OF THE OBLIGATION TO OPERATE AND MAINTAIN SUCH FACILITIES IS EXPRESSLY CONDITIONED UPON (I) COMPLETION OF CONSTRUCTION OF ALL TRADITION TRAIL AND WATER MANAGEMENT SYSTEM IMPROVEMENTS FOR THE PHASE OF SUCH SYSTEM IN WHICH THE DEDICATED EASEMENT AND TRACTS ARE LOCATED IN STRICT COMPLIANCE WITH BOTH THE APPROVED PLANS FOR, AND THE REQUIREMENTS FOR ALL REGULATORY AUTHORITIES EXERCISING JURISDICTION OVER, SUCH IMPROVEMENTS, AND (II) COMPLIANCE WITH ALL SURFACE WATER MANAGEMENT SYSTEM TURNOVER REQUIREMENTS RELATING TO SUCH FACILITIES, AS SET FORTH IN THE POLICIES AND PROCEDURES MANUAL FOR DISTRICT NO. 5. DISTRICT NO. 5 DOES NOT ACCEPT ANY OTHER RIGHT-OF-WAY, EASEMENT, TRACT, OR OTHER INTEREST IN REAL ESTATE OTHERWISE DEDICATED TO THE PUBLIC. DISTRICT NO. 5 DOES NOT ACCEPT ANY OTHER RIGHT-OF-WAY, EASEMENT, TRACT, OR OTHER INTEREST IN REAL ESTATE OTHERWISE DEDICATED TO THE PUBLIC.

DATED THIS _____ DAY OF _____, 2023

CHAIRMAN: _____ SECRETARY: _____

ACKNOWLEDGEMENT:

STATE OF FLORIDA)
COUNTY OF ST. LUCIE)

THE FOREGOING INSTRUMENT WAS ACKNOWLEDGED BEFORE ME BY MEANS OF ___ PHYSICAL PRESENCE OR ___ ONLINE NOTARIZATION, THIS _____ DAY OF _____, 2023, BY _____ OF THE SOUTHERN GROVE COMMUNITY DEVELOPMENT DISTRICT NO. 5, A COMMUNITY DEVELOPMENT DISTRICT ESTABLISHED IN ACCORDANCE WITH CHAPTER 190, FLORIDA STATUTES ("DISTRICT NO. 5"), WHO IS ___ PERSONALLY KNOWN TO ME OR HAS PRODUCED _____ AS IDENTIFICATION.

WITNESS MY HAND AND OFFICIAL SEAL THIS _____ DAY OF _____, 2023.

COMMISSION NO. & EXPIRATION DATE NOTARY PUBLIC, STATE OF FLORIDA

PRINT NAME: _____

ACCEPTANCE OF DEDICATION:

THE TRADITION COMMUNITY DEVELOPMENT DISTRICT NO. 1, A COMMUNITY DEVELOPMENT DISTRICT CREATED PURSUANT TO CHAPTER 190, FLORIDA STATUTES ("DISTRICT NO. 1"), ACTING FOR ITSELF AND EACH OF THE OTHER "DISTRICTS", AS DEFINED IN THE AMENDED AND RESTATED DISTRICT DEVELOPMENT INTERLOCAL AGREEMENT DATED AS OF APRIL 8, 2008, AS AMENDED, WHEREIN DISTRICT NO.1 HAS BEEN DELEGATED RESPONSIBILITY TO ACT ON BEHALF OF ALL OF THE DISTRICTS IN MATTERS RELATING TO CERTAIN INFRASTRUCTURE IMPROVEMENTS, HEREBY ACCEPTS ALL DEDICATIONS AS SET FORTH ON THE WITHIN PLAT AND SPECIFICALLY DEDICATED TO DISTRICT NO.1. DISTRICT NO. 1 DOES NOT ACCEPT ANY OTHER RIGHT-OF-WAY, EASEMENT, TRACT, OR OTHER INTEREST IN REAL ESTATE OTHERWISE DEDICATED TO THE PUBLIC.

DATED THIS _____ DAY OF _____, 2023

CHAIRMAN: _____ SECRETARY: _____

ACKNOWLEDGEMENT:

STATE OF FLORIDA)
COUNTY OF ST. LUCIE)

THE FOREGOING INSTRUMENT WAS ACKNOWLEDGED BEFORE ME BY MEANS OF ___ PHYSICAL PRESENCE OR ___ ONLINE NOTARIZATION, THIS _____ DAY OF _____, 2023, BY _____ OF THE SOUTHERN GROVE COMMUNITY DEVELOPMENT DISTRICT NO. 1, A COMMUNITY DEVELOPMENT DISTRICT ESTABLISHED IN ACCORDANCE WITH CHAPTER 190, FLORIDA STATUTES ("DISTRICT NO. 1"), WHO IS ___ PERSONALLY KNOWN TO ME OR HAS PRODUCED _____ AS IDENTIFICATION.

WITNESS MY HAND AND OFFICIAL SEAL THIS _____ DAY OF _____, 2023.

COMMISSION NO. & EXPIRATION DATE NOTARY PUBLIC, STATE OF FLORIDA

PRINT NAME: _____

TITLE CERTIFICATION:

STATE OF FLORIDA)
COUNTY OF PALM BEACH)

THE UNDERSIGNED, ELIZABETH M. JONES, A DULY LICENSED ATTORNEY IN THE STATE OF FLORIDA, DOES HEREBY CERTIFY THAT, AS OF THE _____ DAY OF _____, 2023, AT _____ AM:

- THE RECORD TITLE TO THE LAND AS DESCRIBED AND SHOWN HEREON IS IN THE NAME OF THE CITY OF PORT ST. LUCIE, A MUNICIPAL CORPORATION OF THE STATE OF FLORIDA, THE ENTITIES EXECUTING THE DEDICATION.
- THERE ARE NO MORTGAGES OF RECORD ENCUMBERING THE LAND DESCRIBED HEREIN.
- PURSUANT TO FLORIDA STATUTES SECTION 197.192, ALL TAXES HAVE BEEN PAID THROUGH THE YEAR 2022.
- ALL ASSESSMENTS AND OTHER LIENS CURRENTLY DUE AND PAYABLE LEVIED BY ANY PRIVATE OR GOVERNMENTAL AGENCY AGAINST SAID LAND HAVE BEEN SATISFIED.
- THERE ARE ENCUMBRANCES OF RECORD BUT THOSE ENCUMBRANCES DO NOT PROHIBIT THE CREATION OF THE SUBDIVISION DEPICTED BY THIS PLAT.

DATED THIS _____ DAY OF _____, 2023

ELIZABETH M. JONES, ESQ.
FLORIDA BAR NO. 84177
SHUTTS & BOWEN LLP
525 OKEECHOBEE BLVD., SUITE 1100
WEST PALM BEACH, FL 33401

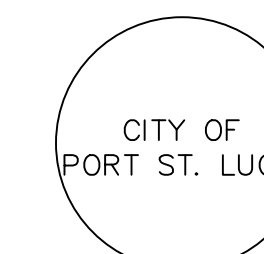
CITY OF PORT ST LUCIE APPROVAL OF PLAT:

STATE OF FLORIDA)
COUNTY OF ST LUCIE)

IT IS HEREBY CERTIFIED THAT THIS PLAT OF STARS AND STRIPES IN THE PARK, HAS BEEN OFFICIALLY APPROVED FOR RECORD BY THE CITY COUNCIL OF THE CITY OF PORT ST LUCIE, FLORIDA AND ALL DEDICATIONS TO THE CITY HEREIN ARE ACCEPTED FOR RECORD BY THE CITY COUNCIL OF THE CITY OF PORT ST. LUCIE, THIS _____ DAY OF _____, 2023.

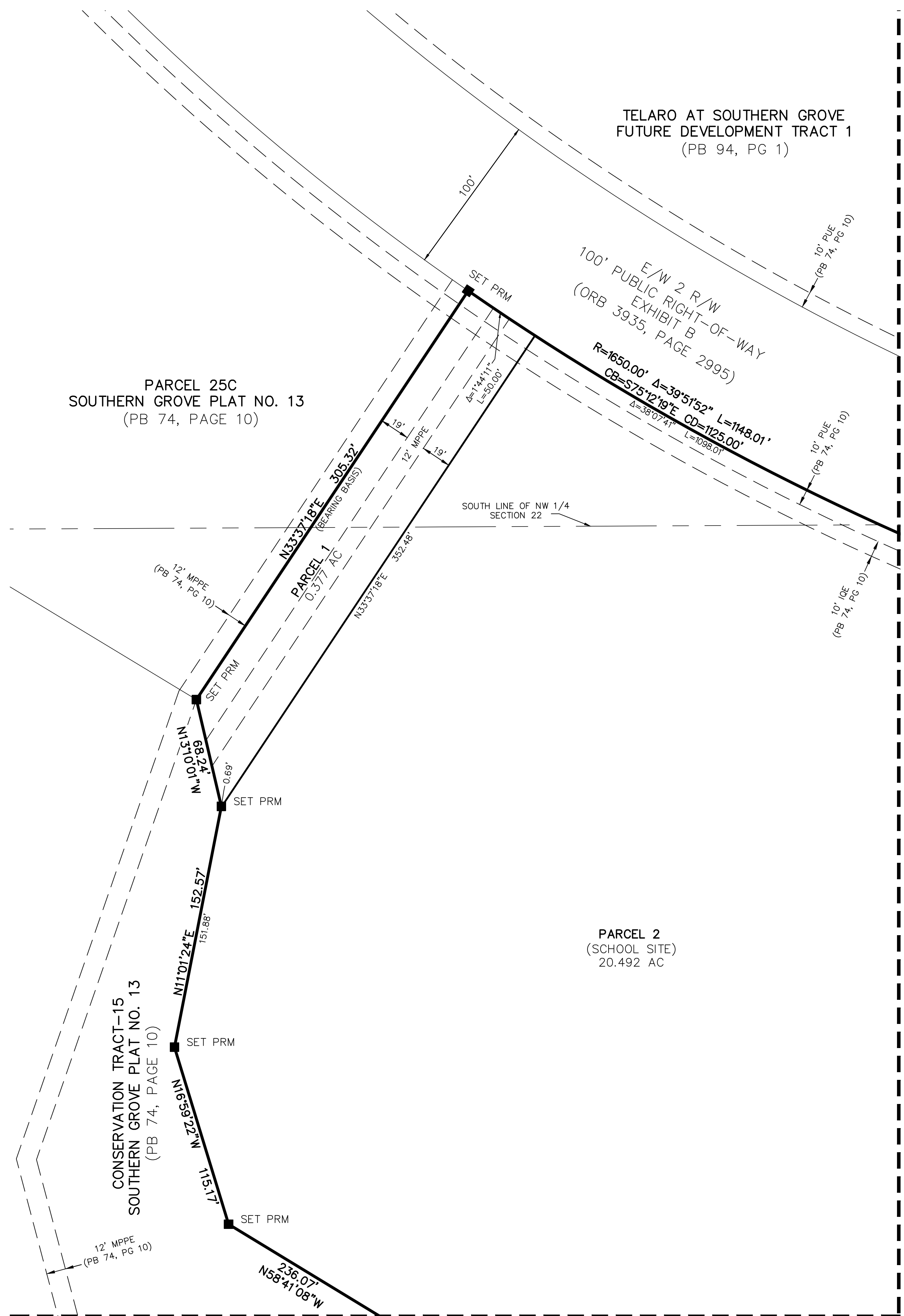
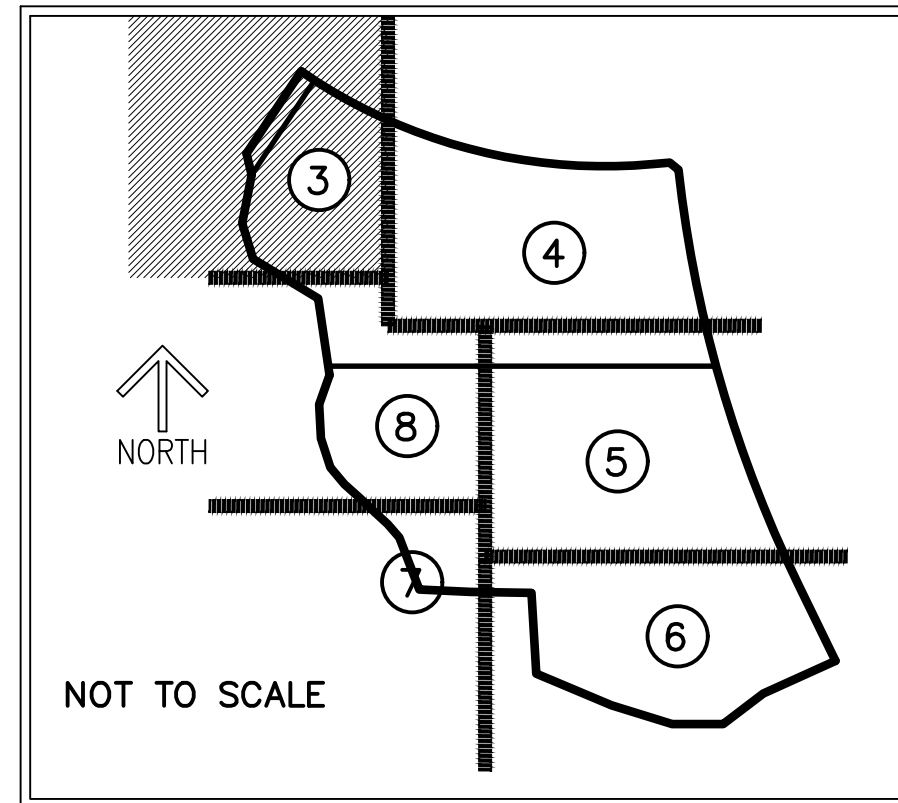
CITY OF PORT ST LUCIE: _____
SHANNON M. MARTIN, MAYOR

ATTEST: _____
SALLY WALSH, CITY CLERK



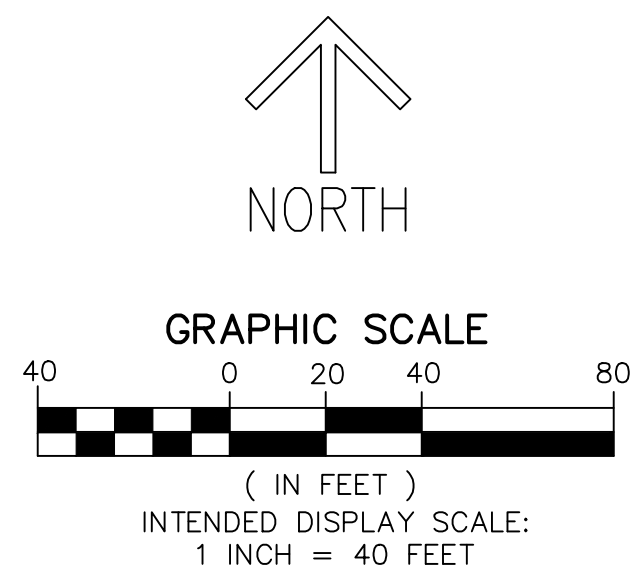
STARS AND STRIPES IN THE PARK

BEING A REPLAT OF ALL OF PARCEL 25B ACCORDING TO SOUTHERN GROVE PLAT NO. 13, AS RECORDED IN PLAT BOOK 74, PAGE 10, PUBLIC RECORDS OF ST. LUCIE COUNTY, FLORIDA, LYING IN SECTION 22, TOWNSHIP 37 SOUTH, RANGE 39 EAST, THE CITY OF PORT ST. LUCIE, ST. LUCIE COUNTY, FLORIDA.



THIS INSTRUMENT PREPARED BY
RONNIE L. FURNISS
OF
CAULFIELD and WHEELER, INC.
SURVEYORS - ENGINEERS - PLANNERS
7900 GLADES ROAD, SUITE 100
BOCA RATON, FLORIDA 33434 - (561)392-1991
CERTIFICATE OF AUTHORIZATION NO. LB3591

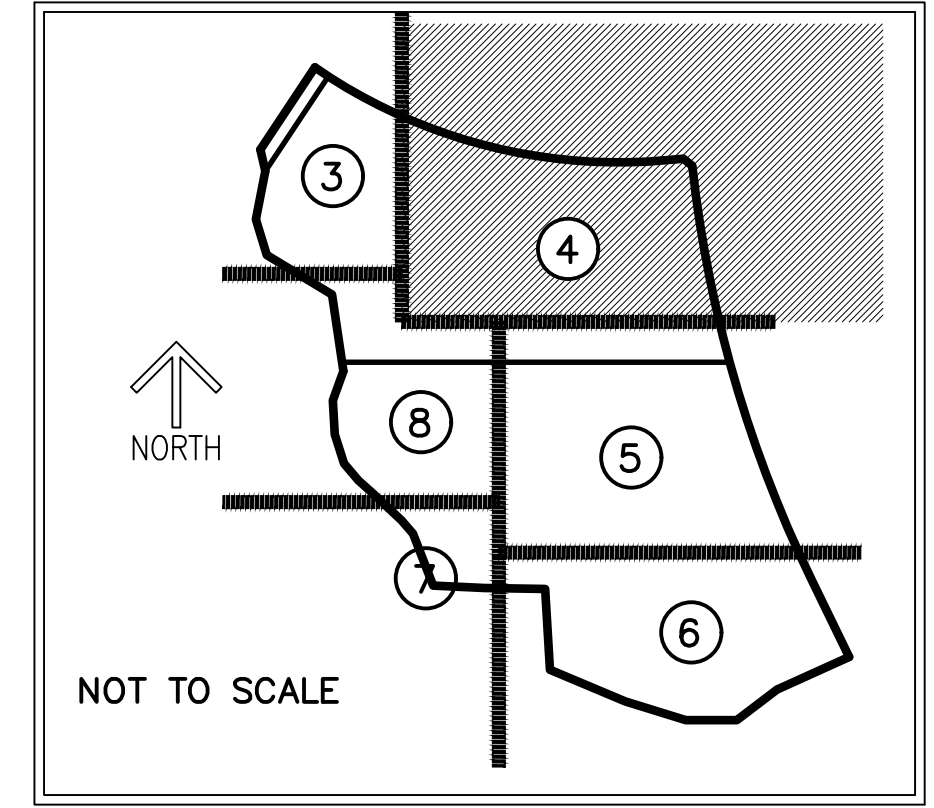
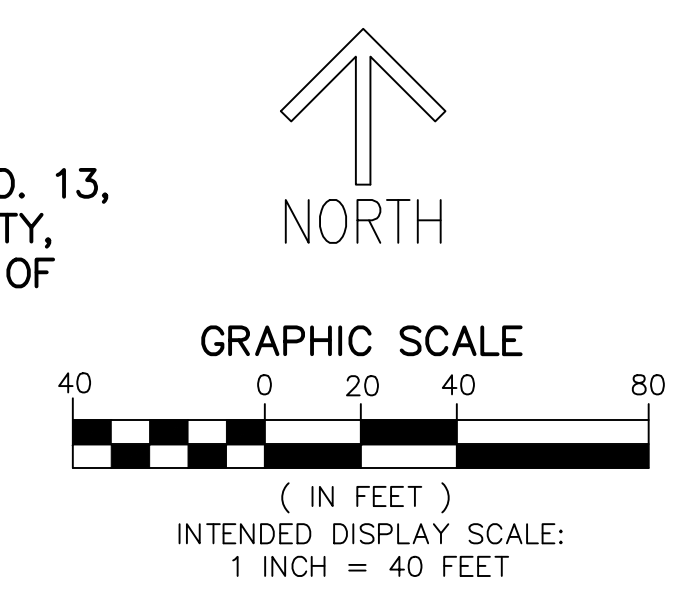
- #### LEGEND/ABBREVIATIONS
- ☍ - CENTERLINE
 - Δ - DELTA (CENTRAL ANGLE)
 - AC - ACRES
 - CB - CHORD BEARING
 - CD - CHORD DISTANCE
 - DE - DRAINAGE EASEMENT
 - L - ARC LENGTH
 - LB - LICENSED BUSINESS
 - LME - LAKE MAINTENANCE EASEMENTS
 - MPPE - MULTI PURPOSE PATHWAY EASEMENT
 - ORB - OFFICIAL RECORD BOOK
 - PB - PLAT BOOK
 - PG - PAGE
 - PUE - PUBLIC UTILITY EASEMENT
 - R - RADIUS
 - (R) - INDICATES RADIAL LINE
 - SF - SQUARE FEET
 - S.M.T. - WATER MANAGEMENT TRACTS
 - TTE - TRADITION TRAIL EASEMENT
 - UE - UTILITY EASEMENT
 - PRM - DENOTES PERMANENT REFERENCE MONUMENT
5/8" IRON ROD WITH CAP STAMPED
C&W PRM LB 3591



STARS AND STRIPES IN THE PARK

BEING A REPLAT OF ALL OF PARCEL 25B ACCORDING TO SOUTHERN GROVE PLAT NO. 13,
 AS RECORDED IN PLAT BOOK 74, PAGE 10, PUBLIC RECORDS OF ST. LUCIE COUNTY,
 FLORIDA, LYING IN SECTION 22, TOWNSHIP 37 SOUTH, RANGE 39 EAST, THE CITY OF
 PORT ST. LUCIE, ST. LUCIE COUNTY, FLORIDA.

THIS INSTRUMENT PREPARED BY
 RONNIE L. FURNESS
 OF
CAULFIELD and WHEELER, INC.
 SURVEYORS - ENGINEERS - PLANNERS
 7900 GLADES ROAD, SUITE 100
 BOCA RATON, FLORIDA 33434 - (561)392-1991
 CERTIFICATE OF AUTHORIZATION NO. LB3591



- LEGEND/ABBREVIATIONS**
- ⊖ - CENTERLINE
 - Δ - DELTA (CENTRAL ANGLE)
 - AC - ACRES
 - CB - CHORD BEARING
 - CD - CHORD DISTANCE
 - DE - DRAINAGE EASEMENT
 - L - ARC LENGTH
 - LB - LICENSED BUSINESS
 - LME - LAKE MAINTENANCE EASEMENTS
 - MPPE - MULTI PURPOSE PATHWAY EASEMENT
 - ORB - OFFICIAL RECORD BOOK
 - PG - PLAT BOOK
 - PUE - PUBLIC UTILITY EASEMENT
 - R - RADIUS
 - (R) - INDICATES RADIAL LINE
 - SF - SQUARE FEET
 - S.M.T - WATER MANAGEMENT TRACTS
 - TTE - TRADITION TRAIL EASEMENT
 - UE - UTILITY EASEMENT
 - PRM - DENOTES PERMANENT REFERENCE MONUMENT
 5/8" IRON ROD WITH CAP STAMPED
 "C&W PRM LB 3591"

TELARO AT SOUTHERN GROVE
 FUTURE DEVELOPMENT TRACT 1
 (PB 94, PG 1)

E/W 2 R/W
 100' PUBLIC RIGHT-OF-WAY
 EXHIBIT B
 (ORB 3935, PAGE 2995)
 $R=1650.00'$ $\Delta=39^{\circ}51'52''$ $L=1148.01'$
 $CB=S75^{\circ}12'19''E$ $CD=1125.00'$
 $\Delta=38^{\circ}07'43''$ $L=1098.01'$

PARCEL 2
 (SCHOOL SITE)
 20.492 AC

$N84^{\circ}51'45''E$
 52.95'
 SET PRM

$S50^{\circ}35'43''E$
 35.64'
 SET PRM

VILLAGE PARKWAY
 TRACT R-1
 150' RIGHT-OF-WAY
 EXHIBIT A
 (O.R.B. 2899, PAGE 2930)

$R=3697.00'$ $\Delta=19^{\circ}43'09''$ $L=1341.22'$
 $CB=S6^{\circ}05'48''E$ $CD=1334.61'$
 $\Delta=9^{\circ}50'51''$ $L=85.78'$

SOUTHERN GROVE PLAT
 NO. 32
 TRACT 3
 (PB 90, PAGE 12)

MATCH LINE SHEET 3

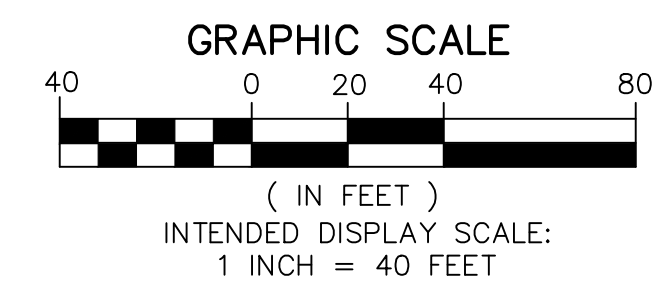
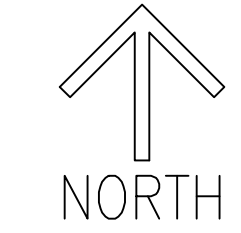
MATCH LINE SHEET 8

MATCH LINE SHEET 8

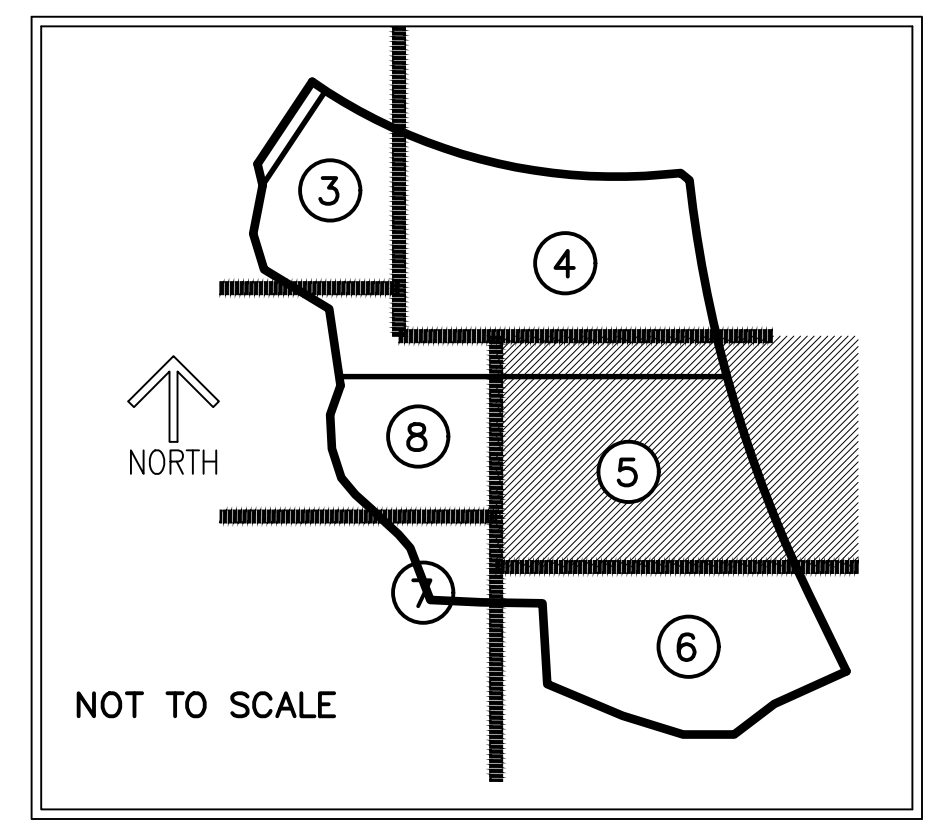
MATCH LINE SHEET 5

STARS AND STRIPES IN THE PARK

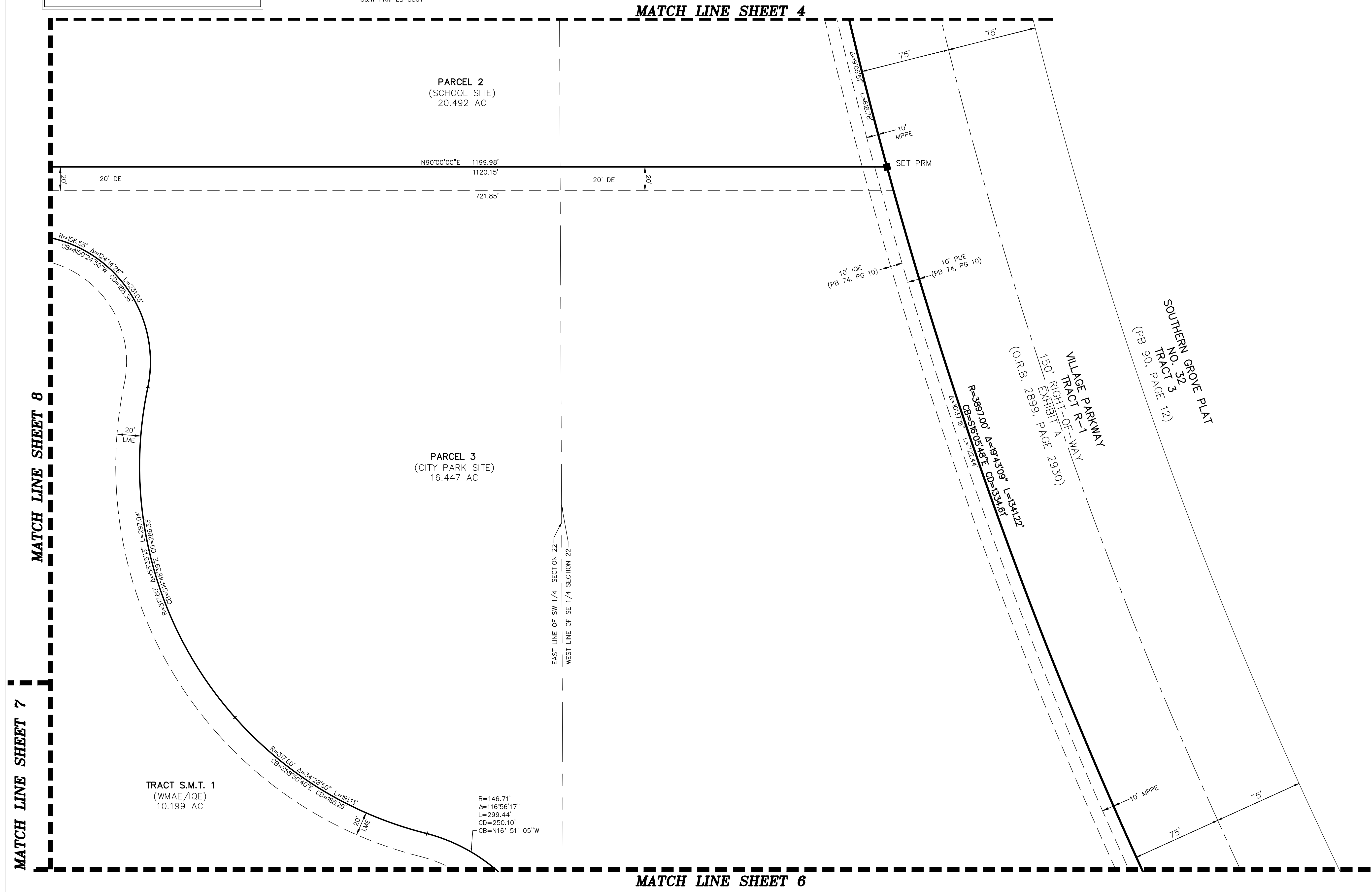
BEING A REPLAT OF ALL OF PARCEL 25B ACCORDING TO SOUTHERN GROVE PLAT NO. 13,
 AS RECORDED IN PLAT BOOK 74, PAGE 10, PUBLIC RECORDS OF ST. LUCIE COUNTY,
 FLORIDA, LYING IN SECTION 22, TOWNSHIP 37 SOUTH, RANGE 39 EAST, THE CITY OF
 PORT ST. LUCIE, ST. LUCIE COUNTY, FLORIDA.



- LEGEND/ABBREVIATIONS**
- ε - CENTERLINE
 - Δ - DELTA (CENTRAL ANGLE)
 - AC - ACRES
 - CB - CHORD BEARING
 - CD - CHORD DISTANCE
 - DE - DRAINAGE EASEMENT
 - L - ARC LENGTH
 - LB - LICENSED BUSINESS
 - LME - LAKE MAINTENANCE EASEMENTS
 - MPPE - MULTI PURPOSE PATHWAY EASEMENT
 - ORB - OFFICIAL RECORD BOOK
 - PB - PLAT BOOK
 - PG - PAGE
 - PUE - PUBLIC UTILITY EASEMENT
 - R - RADIUS
 - (R) - INDICATES RADIAL LINE
 - SF - SQUARE FEET
 - S.M.T - WATER MANAGEMENT TRACTS
 - TTE - TRADITION TRAIL EASEMENT
 - UE - UTILITY EASEMENT
 - PRM - DENOTES PERMANENT REFERENCE MONUMENT
 5/8" IRON ROD WITH CAP STAMPED
 "C&W PRM LB 3591"

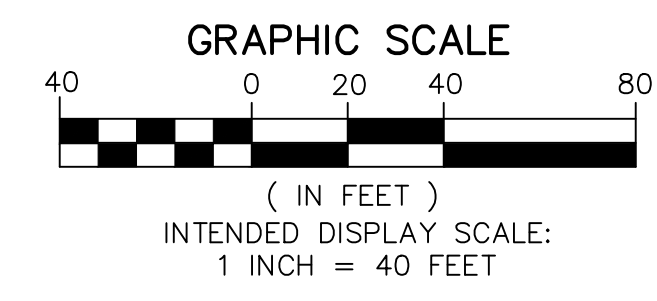
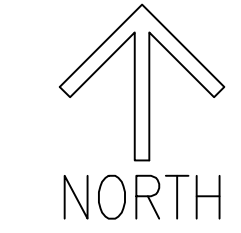


THIS INSTRUMENT PREPARED BY
 RONNIE L. FURNISS
 OF
CAULFIELD and WHEELER, INC.
 SURVEYORS - ENGINEERS - PLANNERS
 7900 GLADES ROAD, SUITE 100
 BOCA RATON, FLORIDA 33434 - (561)392-1991
 CERTIFICATE OF AUTHORIZATION NO. LB3591

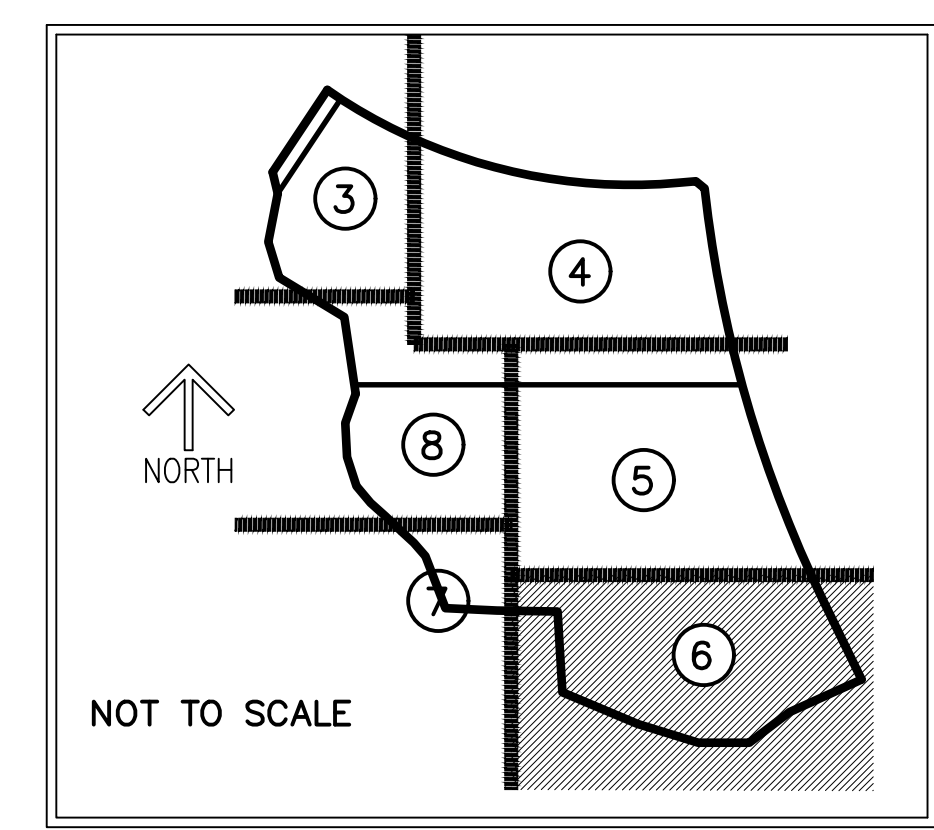


STARS AND STRIPES IN THE PARK

BEING A REPLAT OF ALL OF PARCEL 25B ACCORDING TO SOUTHERN GROVE PLAT NO. 13,
 AS RECORDED IN PLAT BOOK 74, PAGE 10, PUBLIC RECORDS OF ST. LUCIE COUNTY,
 FLORIDA, LYING IN SECTION 22, TOWNSHIP 37 SOUTH, RANGE 39 EAST, THE CITY OF
 PORT ST. LUCIE, ST. LUCIE COUNTY, FLORIDA.

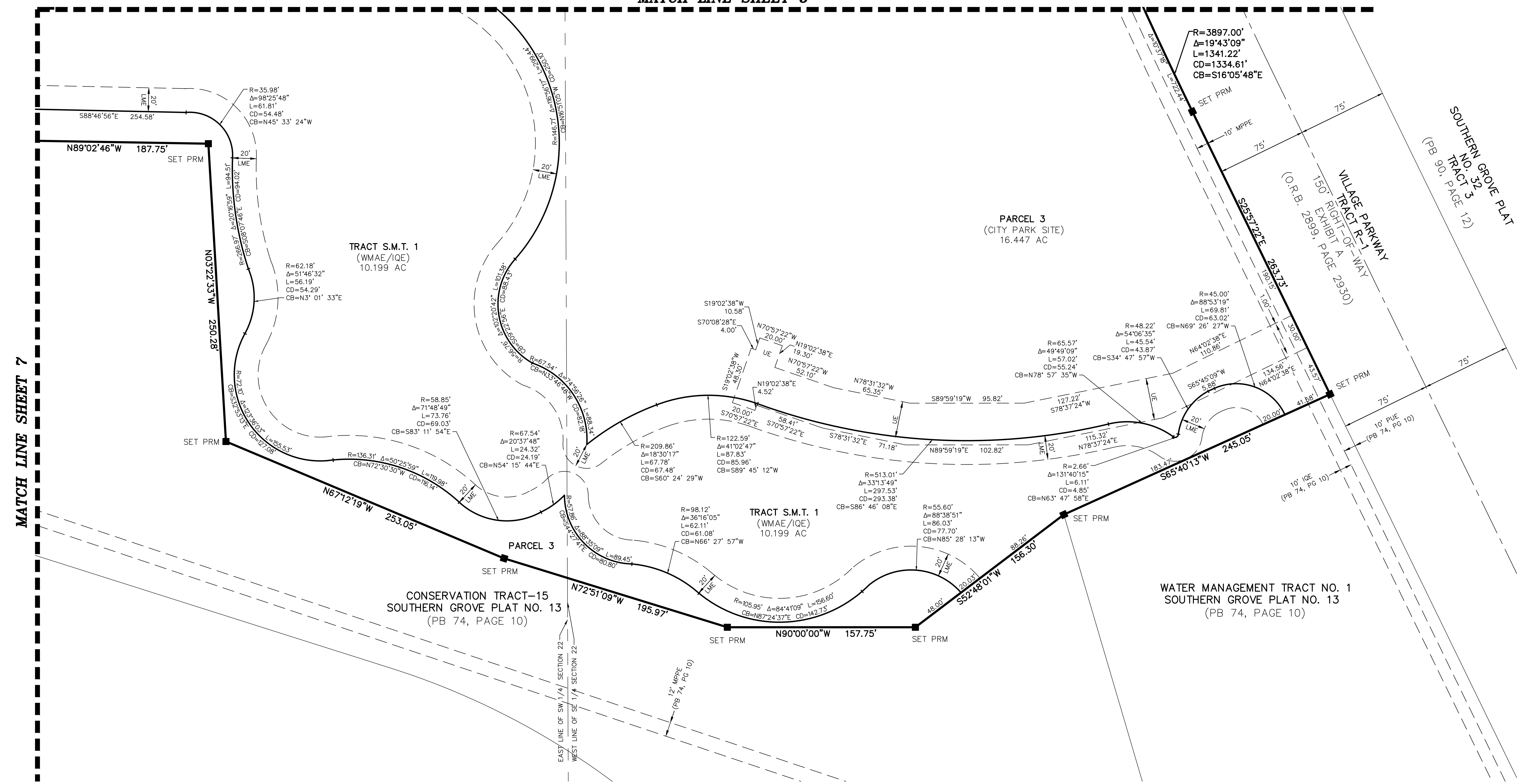


THIS INSTRUMENT PREPARED BY
 RONNIE L. FURNESS
 OF
CAULFIELD and WHEELER, INC.
 SURVEYORS - ENGINEERS - PLANNERS
 7900 GLADES ROAD, SUITE 100
 BOCA RATON, FLORIDA 33434 - (561)392-1991
 CERTIFICATE OF AUTHORIZATION NO. LB3591



- LEGEND/ABBREVIATIONS**
- ε - CENTERLINE
 - Δ - DELTA (CENTRAL ANGLE)
 - AC - ACRES
 - CB - CHORD BEARING
 - CD - CHORD DISTANCE
 - DE - DRAINAGE EASEMENT
 - L - ARC LENGTH
 - LB - LICENSED BUSINESS
 - LME - LAKE MAINTENANCE EASEMENTS
 - MPPE - MULTI PURPOSE PATHWAY EASEMENT
 - ORB - OFFICIAL RECORD BOOK
 - PB - PLAT BOOK
 - PG - PAGE
 - PUE - PUBLIC UTILITY EASEMENT
 - R - RADIUS
 - (R) - INDICATES RADIAL LINE
 - SF - SQUARE FEET
 - S.M.T. - WATER MANAGEMENT TRACTS
 - TTE - TRADITION TRAIL EASEMENT
 - UE - UTILITY EASEMENT
 - PRM - DENOTES PERMANENT REFERENCE MONUMENT
 5/8" IRON ROD WITH CAP STAMPED
 "C&W PRM LB 3591"

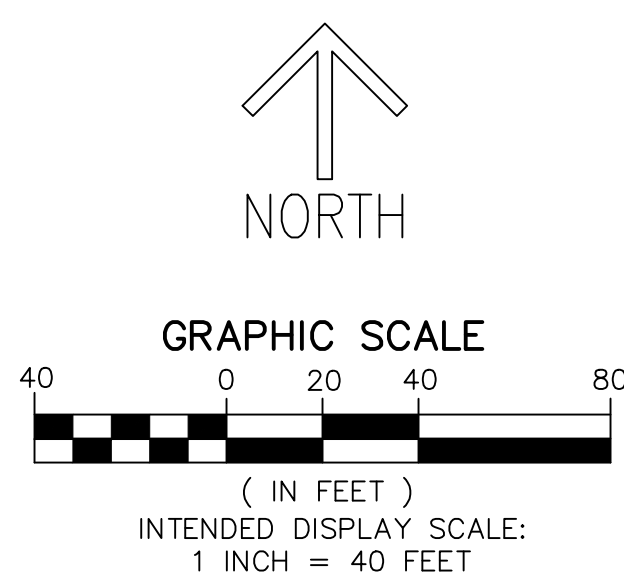
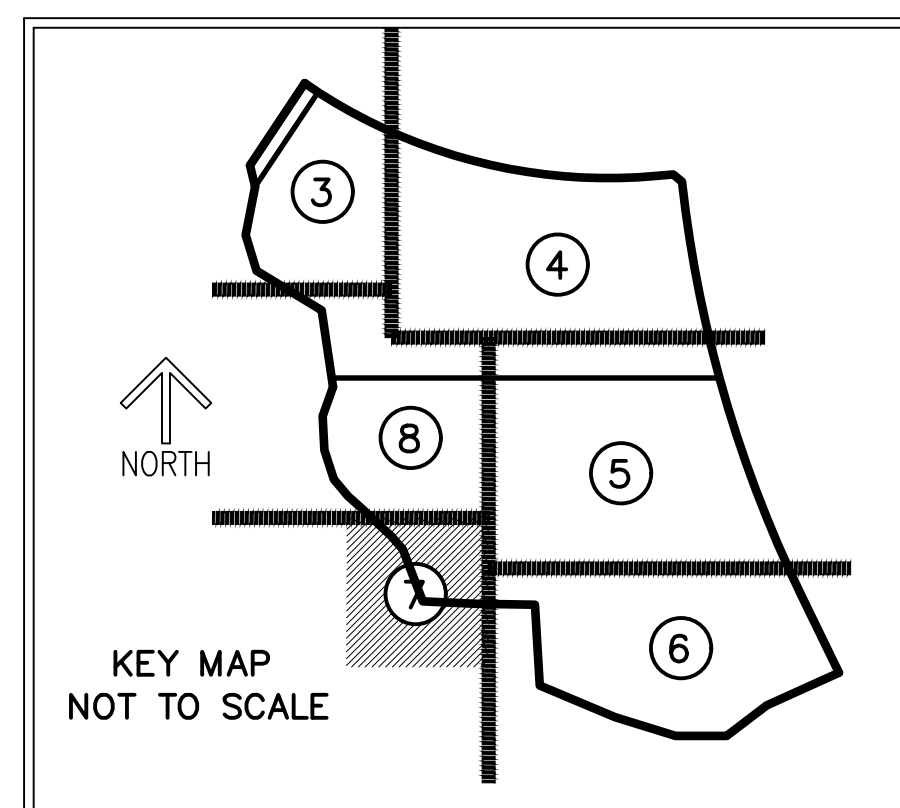
MATCH LINE SHEET 5



STARS AND STRIPES IN THE PARK

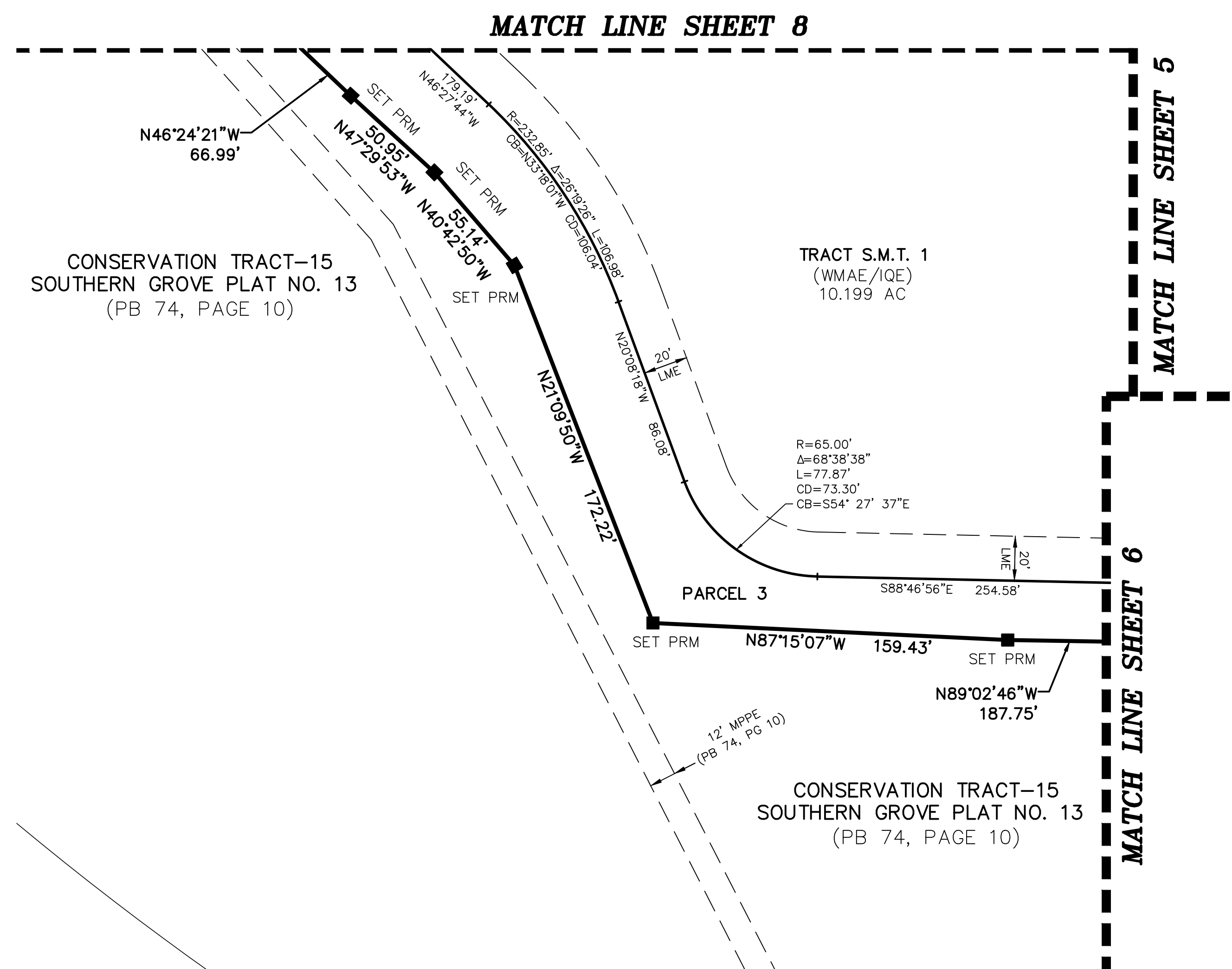
BEING A REPLAT OF ALL OF PARCEL 25B ACCORDING TO SOUTHERN GROVE PLAT NO. 13,
AS RECORDED IN PLAT BOOK 74, PAGE 10, PUBLIC RECORDS OF ST. LUCIE COUNTY,
FLORIDA, LYING IN SECTION 22, TOWNSHIP 37 SOUTH, RANGE 39 EAST, THE CITY OF
PORT ST. LUCIE, ST. LUCIE COUNTY, FLORIDA.

THIS INSTRUMENT PREPARED BY
RONNIE L. FURNISS
OF
CAULFIELD and WHEELER, INC.
SURVEYORS - ENGINEERS - PLANNERS
7900 GLADES ROAD, SUITE 100
BOCA RATON, FLORIDA 33434 - (561)392-1991
CERTIFICATE OF AUTHORIZATION NO. LB3591



LEGEND/ABBREVIATIONS

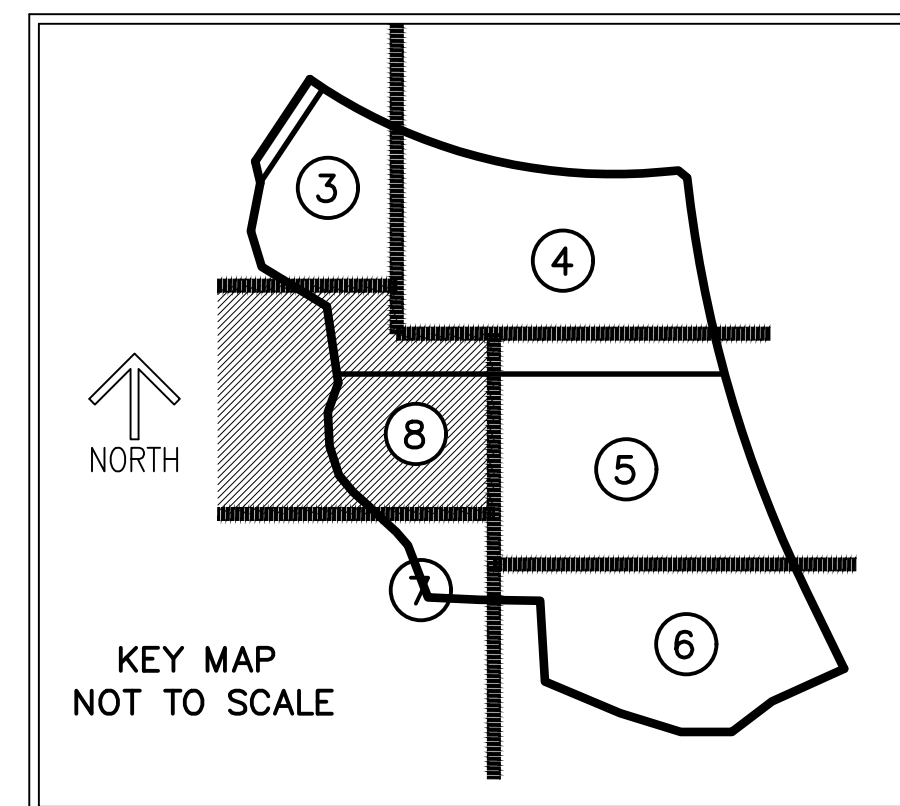
- CL - CENTERLINE
- Δ - DELTA (CENTRAL ANGLE)
- AC - ACRES
- CB - CHORD BEARING
- CD - CHORD DISTANCE
- DE - DRAINAGE EASEMENT
- L - ARC LENGTH
- LB - LICENSED BUSINESS
- LME - LAKE MAINTENANCE EASEMENTS
- MPPE - MULTI PURPOSE PATHWAY EASEMENT
- ORB - OFFICIAL RECORD BOOK
- PB - PLAT BOOK
- PG - PAGE
- PUE - PUBLIC UTILITY EASEMENT
- R - RADIUS
- (R) - INDICATES RADIAL LINE
- SF - SQUARE FEET
- S.M.T - WATER MANAGEMENT TRACTS
- TTE - TRADITION TRAIL EASEMENT
- UE - UTILITY EASEMENT
- PRM - DENOTES PERMANENT REFERENCE MONUMENT
5/8" IRON ROD WITH CAP STAMPED
C&W PRM LB 3591



THIS INSTRUMENT PREPARED BY
 RONNIE L. FURNISS
 OF
CAULFIELD and WHEELER, INC.
 SURVEYORS - ENGINEERS - PLANNERS
 7900 GLADES ROAD, SUITE 100
 BOCA RATON, FLORIDA 33434 - (561)392-1991
 CERTIFICATE OF AUTHORIZATION NO. LB3591

STARS AND STRIPES IN THE PARK

BEING A REPLAT OF ALL OF PARCEL 25B ACCORDING TO SOUTHERN GROVE PLAT NO. 13,
 AS RECORDED IN PLAT BOOK 74, PAGE 10, PUBLIC RECORDS OF ST. LUCIE COUNTY,
 FLORIDA, LYING IN SECTION 22, TOWNSHIP 37 SOUTH, RANGE 39 EAST, THE CITY OF
 PORT ST. LUCIE, ST. LUCIE COUNTY, FLORIDA.



- LEGEND/ABBREVIATIONS**
- CL - CENTERLINE
 - Δ - DELTA (CENTRAL ANGLE)
 - AC - ACRES
 - CB - CHORD BEARING
 - CD - CHORD DISTANCE
 - DE - DRAINAGE EASEMENT
 - L - ARC LENGTH
 - LB - LICENSED BUSINESS
 - LME - LAKE MAINTENANCE EASEMENTS
 - MPPE - MULTI PURPOSE PATHWAY EASEMENT
 - ORB - OFFICIAL RECORD BOOK
 - PB - PLAT BOOK
 - PG - PAGE
 - PUE - PUBLIC UTILITY EASEMENT
 - R - RADIUS
 - (R) - INDICATES RADIAL LINE
 - SF - SQUARE FEET
 - S.M.T. - WATER MANAGEMENT TRACTS
 - TTE - TRADITION TRAIL EASEMENT
 - UE - UTILITY EASEMENT
 - PRM - DENOTES PERMANENT REFERENCE MONUMENT
5/8" IRON ROD WITH CAP STAMPED
"C&W PRM LB 3591"

