

PLANT SCHEDULE

ENTRANCE LANDSCAPE

TREES	QTY	BOTANICAL NAME	COMMON NAME	REMARKS
BS	3	Bursera simaruba	Gumbo Limbo	MIN. 65 GAL., 14' HT., 2.5" CAL.
CS	10	Conocarpus erectus 'Sericeus'	Silver Buttonwood	MIN. 30 GAL., 8' HT., FULL HEAD, MATCHED.
IV	6	Ilex vomitoria	Yaupon Holly	MIN. 30 GAL., 8' HT., MULTI TRUNK.
LJ	4	Ligustrum japonicum	Japanese Privet	MIN. 65 GAL., 8' HT. X 8' SPD. MATCHED, FULL HEAD.
PS	10	Phoenix sylvestris	Sylvester Date Palm	MIN. 8' CT., MATCHED.
TG	4	Tibouchina granulosa	Purple Glory Tree	MIN. 45 GAL., 8' HT. MATCHED, FULL HEAD.
WB	20	Wodyetia bifurcata	Foxtail Palm	MIN. 8' CT., MATCHED.
SHRUBS				
SHRUBS	QTY	BOTANICAL NAME	COMMON NAME	REMARKS
BP	3	Bougainvillea spectabilis 'Purple'	Purple Bougainvillea	MIN. 15 GAL., TRELIS.
CRR	21	Chrysobalanus icaco 'Red Tip'	Red Tip Cocoplum	MIN. 7 GAL., 36" HT. X 30" SPD., 36" O.C.
CG	7	Clusia guttifera	Small Leaf Clusia	MIN. 7 GAL., 36" HT. X 30" SPD., 42" O.C.
CES	70	Conocarpus erectus 'Sericeus'	Silver Buttonwood	MIN. 3 GAL., 24" HT. X 24" SPR., 24" OC.
COE	9	Crinum augustum 'Queen Emma'	'Queen Emma' Crinum	MIN. 7 GAL., FULL.
IN	64	Ilex vomitoria 'Nana'	Dwarf Yaupon	MIN., 3 GAL., 24" HT X 24" SPD., 24" OC.
IP	21	Illicium floridanum	Florida Anise	MIN. 3 GAL., 24" HT. X 24" SPR., 24" OC.
PM	66	Podocarpus macrophyllus	Podocarpus	MIN. 7 GAL., 36" HT X 30" SPR., 30" OC.
SR	5	Streptocarpus reginae	Bird Of Paradise	MIN., 7 GAL., FULL.
SHRUB AREAS				
SHRUB AREAS	QTY	BOTANICAL NAME	COMMON NAME	REMARKS
DA	563	Duranta erecta 'Aurea'	Dwarf Yellow Duranta	MIN. 1 GAL., 18" HT X 18" SPR., 24" O.C.
EVO	231	Evolvulus glomeratus 'Blue Daze'	Brazilian Dwarf Morning Glory	MIN. 1 GAL., 12" HT. X 12" SPR., 18" OC.
HC	310	Hamelia patens 'Compacta'	Dwarf Firebush	MIN. 3 GAL., 24" HT. X 24" SPR., 24" OC.
GROUND COVERS				
GROUND COVERS	QTY	BOTANICAL NAME	COMMON NAME	REMARKS
ARG	236	Arachis glabrata	Perennial Peanut	MIN. 1 GAL., 18" OC.
JC	116	Juniperus conferta 'Compacta'	Dwarf Shore Juniper	MIN. 3 GAL., 18" HT. X 24" SPR., 24" OC.
LIR	268	Liriope muscari 'Big Blue'	Big Blue Lilyturf	MIN. 1 GAL., FULL POT, 12" OC.
TAM	2170	Trachelospermum asiaticum	Asian Jasmine	MIN. 1 GAL., FULL POT, 12" O.C.

30' LANDSCAPE BUFFER - NORTH

TREES	QTY	BOTANICAL NAME	COMMON NAME	REMARKS
BS	3	Bursera simaruba	Gumbo Limbo	MIN. 65 GAL., 14' HT., 2.5" CAL.
CR2	8	Callistemon rigidus 'Red Cluster'	Red Cluster Bottle Brush	MIN. 8' HT. UPRIGHT, FULL HEAD.
CS	14	Conocarpus erectus 'Sericeus'	Silver Buttonwood	MIN. 30 GAL., 8' HT., FULL HEAD, MATCHED.
IV	4	Ilex vomitoria	Yaupon Holly	MIN. 30 GAL., 8' HT., MULTI TRUNK.
QV	6	Quercus virginiana	Southern Live Oak	min. 65 gal., 14' ht., 3" cal., matched
BB	17	Bucida buceras	Shady Lady Black Olive	MIN. 65 GAL., 14' HT., 3" CAL.
BA	15	Bulnesia arborea	Verawood Tree	MIN. 30 GAL., 8' HT. FULL HEAD.
SHRUBS				
SHRUBS	QTY	BOTANICAL NAME	COMMON NAME	REMARKS
CR	49	Chrysobalanus icaco 'Red Tip'	Red Tip Cocoplum	MIN. 3 GAL., 24" HT. X 24" SPR., 24" OC.
CG	145	Clusia guttifera	Small Leaf Clusia	MIN. 7 GAL., 36" HT. X 30" SPD., 42" O.C.
HAM	36	Hamelia patens	Firebush	MIN. 3 GAL., 24" HT. X 24" SPR., 24" O.C.
PM	147	Podocarpus macrophyllus	Podocarpus	MIN. 7 GAL., 36" HT X 30" SPR., 30" OC.
SHRUB AREAS				
SHRUB AREAS	QTY	BOTANICAL NAME	COMMON NAME	REMARKS
HC	291	Hamelia patens 'Compacta'	Dwarf Firebush	MIN. 3 GAL., 24" HT. X 24" SPR., 24" OC.
MCP	247	Muhlenbergia capillaris	Pink Muhly	MIN. 3 GAL., 24" HT. X 24" SPR., 36" O.C.
PI	360	Plumbago auriculata 'Imperial Blue'	Plumbago	MIN. 3 GAL., 24" HT. X 24" SPR., 24" O.C.
RIA	127	Rhaphiolepis indica	Indian Hawthorn	MIN. 3 GAL., 18" HT. X 18" SPR., 24" O.C.
TF	179	Tripsacum floridanum	Florida Gamagrass	MIN. 3 GAL., 24" HT. X 24" SPR., 36" OC.
GROUND COVERS				
GROUND COVERS	QTY	BOTANICAL NAME	COMMON NAME	REMARKS
ARG	1559	Arachis glabrata	Perennial Peanut	MIN. 1 GAL., 18" OC.

30' LANDSCAPE BUFFER - EAST

TREES	QTY	BOTANICAL NAME	COMMON NAME	REMARKS
BS	3	Bursera simaruba	Gumbo Limbo	MIN. 65 GAL., 14' HT., 2.5" CAL.
CR2	18	Callistemon rigidus 'Red Cluster'	Red Cluster Bottle Brush	MIN. 8' HT. UPRIGHT, FULL HEAD.
PE	37	Pinus elliotti	Slash Pine	MIN., 8' HT., 12'-16" HT., 2.5" CAL.
QV	5	Quercus virginiana	Southern Live Oak	min. 65 gal., 14' ht., 3" cal., matched
SS	25	Sabal palmetto	Cabbage Palmetto	MIN. 8' HT., 6' - 16' CT., SLICK, REGEN.
SHRUBS				
SHRUBS	QTY	BOTANICAL NAME	COMMON NAME	REMARKS
CR	525	Chrysobalanus icaco 'Red Tip'	Red Tip Cocoplum	MIN. 3 GAL., 24" HT. X 24" SPR., 24" OC.
CG	39	Clusia guttifera	Small Leaf Clusia	MIN. 7 GAL., 36" HT. X 30" SPD., 42" O.C.
HAM	63	Hamelia patens	Firebush	MIN. 3 GAL., 24" HT. X 24" SPR., 24" O.C.
VO	176	Viburnum odoratissimum	Sweet Viburnum	MIN. 3 GAL., 36" HT. X 30" SPD., 36" OC.

10' LANDSCAPE BUFFER SOUTH

TREES	QTY	BOTANICAL NAME	COMMON NAME	REMARKS
CF	16	Citharexylum fruticosum	Fiddlewood	MIN. 8' HT., FULL HEAD.
PE	35	Pinus elliotti	Slash Pine	MIN., 8' HT., 12'-16" HT., 2.5" CAL.
SHRUBS				
SHRUBS	QTY	BOTANICAL NAME	COMMON NAME	REMARKS
HAM	361	Hamelia patens	Firebush	MIN. 3 GAL., 24" HT. X 24" SPR., 24" O.C.
VW	280	Viburnum obovatum	Walter's Viburnum	MIN. 3 GAL., 24" HT. X 24" SPD., 24" O.C.

LANDSCAPE TABLES

ENTRANCE LANDSCAPE

LANDSCAPE TABLE: ENTRANCE WALL LANDSCAPE/ 280 LF. (AREA: 19,940 SF)		
CODE:(PER CHAPTER 154 PSL LANDSCAPE CODE)	REQUIRED	PROVIDED
TREES		
TYPE "A" TREES (1:1 RATIO)		15
TYPE "B" TREES (2:1 RATIO)		41
TOTAL CANOPY TREES REQUIRED 1/15 LF (280/15 = 18.6)	19	20
DROUGHT TOLERANT TREES MIN. 50% OF REQ.	10	30
NATIVE TREES 50% OF REQ.	10	20
FLOWERING TREES 20% REQ.	4	4
PALM TREES MAX. 25% OF REQ. TREES	5 MAX	5
MIX OF TREES	2	7
SHRUBS (1/2 L.F.) (280/2 = 140)	140	1109
NATIVE SHRUBS MIN. 25% REQ.	41	469
DROUGHT TOLERANT SHRUBS MIN. 50% REQ.	140	472
GROUND COVER	AS NEEDED	2249
GROUND COVER FLOWERING MIN. 10%	210	610
DROUGHT TOLERANT GC MIN. 50% REQ.	1124	2143
SOD (TO BE LESS THAN 50% LANDSCAPE AREA)	9970 SF MAX	9680 SF
SOD A (HIGH WATER) St. AUGUSTINE		6850 SF
SOD B (LOW WATER) BAHIA		2830 SF
IRRIGATION ZONES	LOW/MED/HIGH	LOW/MEDIUM/HIGH
NON-POTABLE WATER SOURCE	NA	NA

*REQUIRED CONOPY TREE EQUIVALENT = 19 (5 TYPE "A"/ 18 TYPE "B"/ 5 PALMS)

30' LANDSCAPE BUFFER - NORTH

LANDSCAPE TABLE: 30' LANDSCAPE BUFFER/1275 L.F.		
CODE:(PER CHAPTER 154 PSL LANDSCAPE CODE)	REQUIRED	PROVIDED
LANDSCAPE BUFFER		
	20' BUFFER/25,500 SF	30' BUFFER/38,250 SF.
TREES		
TYPE "A" TREES (1:1 RATIO)		69
TYPE "B" TREES (2:1 RATIO)		44 (2:1)=22
TOTAL CANOPY TREES REQUIRED 1/30 LF. (1275/30 = 42.5)	43	47
DROUGHT TOLERANT TREES MIN. 50% OF REQ.	22	43
NATIVE TREES 50% OF REQ.	22	43
FLOWERING TREES 20% REQ.	9	26
PALM TREES MAX. 25% OF REQ. TREES	11 MAX	0
MIX OF TREES	5	7
SHRUBS (1/2 L.F.) (1275/2 = 638)	638	1678
NATIVE SHRUBS MIN. 25% REQ.	163	989 (64%)
DROUGHT TOLERANT SHRUBS MIN. 50% REQ.	326	1145 (56%)
GROUND COVER	AS NEEDED	1981
GROUND COVER FLOWERING MIN. 10%	198	1981
DROUGHT TOLERANT GC MIN. 50% REQ.	990	1981 (100%)
SOD (TO BE LESS THAN 50% LANDSCAPE AREA)	19125 SF. MAX	14057 (36%)
SOD A (HIGH WATER) St. AUGUSTINE		5158 SF.
SOD B (LOW WATER) BAHIA		8899 SF.
IRRIGATION ZONES	LOW/MED/HIGH	LOW/MEDIUM/HIGH
NON-POTABLE WATER SOURCE	NA	NA

*REQUIRED CONOPY TREE EQUIVALENT = 60 (45 TYPE "A"/ 15 PALMS)

** CLUSIA AND VIBURNUM ARE SIZED BIGGER AT PLANTING

30' LANDSCAPE BUFFER - EAST

LANDSCAPE TABLE: 30' LANDSCAPE BUFFER/ 1802 LF.		
CODE:(PER CHAPTER 154 PSL LANDSCAPE CODE)	REQUIRED	PROVIDED
LANDSCAPE BUFFER		
	15' BUFFER/27,030 SF.	30' BUFFER/54,060 SF.
TREES		
TYPE "A" TREES (1:1 RATIO)		87
TYPE "B" TREES (2:1 RATIO)		45
TOTAL CANOPY TREES REQUIRED 1/30 LF (1802/30=60)	60	60
DROUGHT TOLERANT TREES MIN. 50% OF REQ.	30	70
NATIVE TREES 50% OF REQ.	30	70
FLOWERING TREES 20% REQ.	12	17
PALM TREES MAX. 25% OF REQ. TREES	15 MAX	15
MIX OF TREES	2	5
SHRUBS (1/2 L.F.) (1802/2 = 901)	901	803**
NATIVE SHRUBS MIN. 25% REQ.	225	627
DROUGHT TOLERANT SHRUBS MIN. 50% REQ.	140	803
GROUND COVER	AS NEEDED	
GROUND COVER FLOWERING MIN. 10%	NA	
DROUGHT TOLERANT GC MIN. 50% REQ.	NA	
SOD (TO BE LESS THAN 50% LANDSCAPE AREA)	13515 SF MAX	10312 SF.
SOD A (HIGH WATER) St. AUGUSTINE		NA
SOD B (LOW WATER) BAHIA		10312 SF.
IRRIGATION ZONES	LOW/MED/HIGH	LOW/MEDIUM/HIGH
NON-POTABLE WATER SOURCE	NA	NA

10' LANDSCAPE BUFFER SOUTH

LANDSCAPE TABLE: 10' LANDSCAPE BUFFER/ 1280 LF.		
CODE:(PER CHAPTER 154 PSL LANDSCAPE CODE)	REQUIRED	PROVIDED
LANDSCAPE BUFFER		
	10' BUFFER/12800 SF.	10' BUFFER/12800 SF.
TREES		
TYPE "A" TREES (1:1 RATIO)		51
TYPE "B" TREES (2:1 RATIO)		35
TOTAL CANOPY TREES REQUIRED 1/30 LF (1280/30=42.6)	43	43
DROUGHT TOLERANT TREES MIN. 50% OF REQ.	22	43
NATIVE TREES 50% OF REQ.	22	43
FLOWERING TREES 20% REQ.	9	16
PALM TREES MAX. 25% OF REQ. TREES	15 MAX	NA
MIX OF TREES	2	2
SHRUBS (1/2 L.F.) (1280/2 = 640)	640	641
NATIVE SHRUBS MIN. 25% REQ.	160	641
DROUGHT TOLERANT SHRUBS MIN. 50% REQ.	140	803
GROUND COVER	AS NEEDED	
GROUND COVER FLOWERING MIN. 10%	NA	
DROUGHT TOLERANT GC MIN. 50% REQ.	NA	
SOD (TO BE LESS THAN 50% LANDSCAPE AREA)	6400 SF MAX	2400 SF.
SOD A (HIGH WATER) St. AUGUSTINE		NA
SOD B (LOW WATER) BAHIA		2400 SF.
IRRIGATION ZONES	LOW/MED/HIGH	LOW/MEDIUM/HIGH
NON-POTABLE WATER SOURCE	NA	NA

*REQUIRED CONOPY TREE EQUIVALENT = 43 (35 TYPE "A"/ 16 TYPE "B")

thomas Daly Digitally signed by thomas Daly
Date: 2021.03.30 12:31:20 -04'00'

CITY OF PORT ST. LUCIE PROJECT#
P-21-015
-P-19-191-
PSLUSD #5336

Date:

PROJECT NO.
1906
SCALE
DATE
NOV 2019
SHEET
L-001

03.25.21 REV. STREET TREES PER COMMENTS

03.23.21 REV. WATER METERS PER COMMENTS

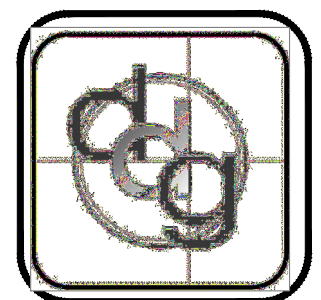
03.16.21 REV. STREET TREES PER COMMENTS

03.01.21 REV. STREET TREES PER CITY COMMENTS

01.29.20 REV. PER CITY COMMENTS

REV. DATE DESCRIPTION

PLANT SCHEDULE / TABLES
LANDSCAPE CONSTRUCTION PLANS
Southern Groves
Port St. Lucie, Florida

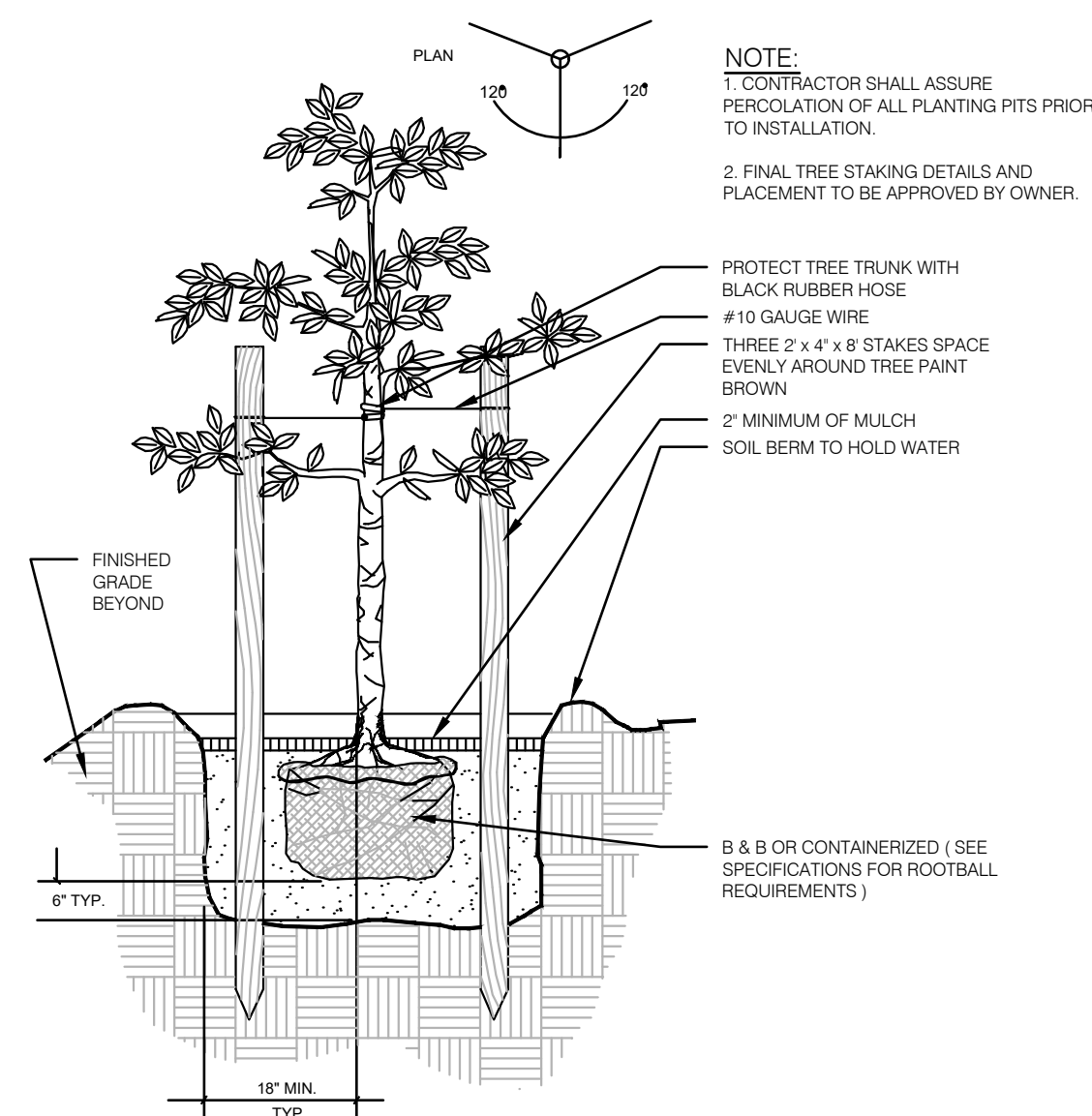


PROJECT NO.
1906
SCALE
DATE
NOV 2019
SHEET
L-001

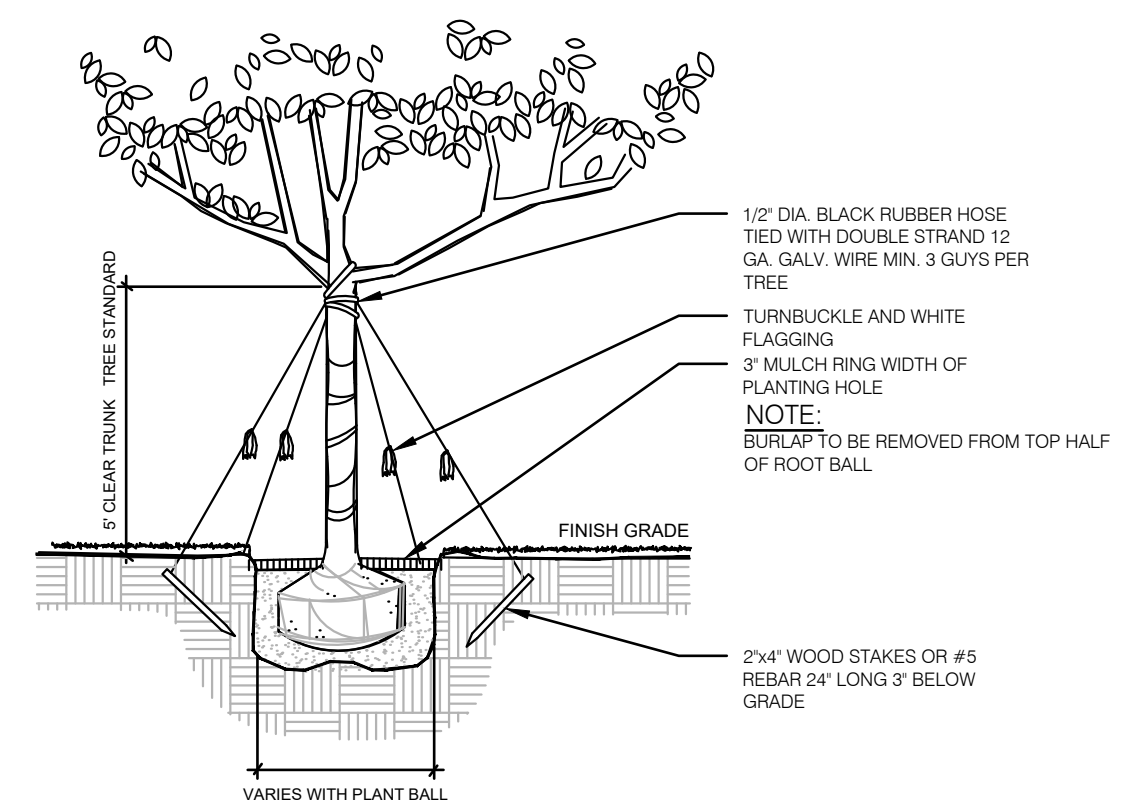
daily design group inc.
Urban Planning, Landscape Architecture, Project Management, Development Consulting
913 N Pennsylvania Ave, Winter Park, FL 32789 (407) 740-7373 www.dailydesign.com

PLANTING DETAILS

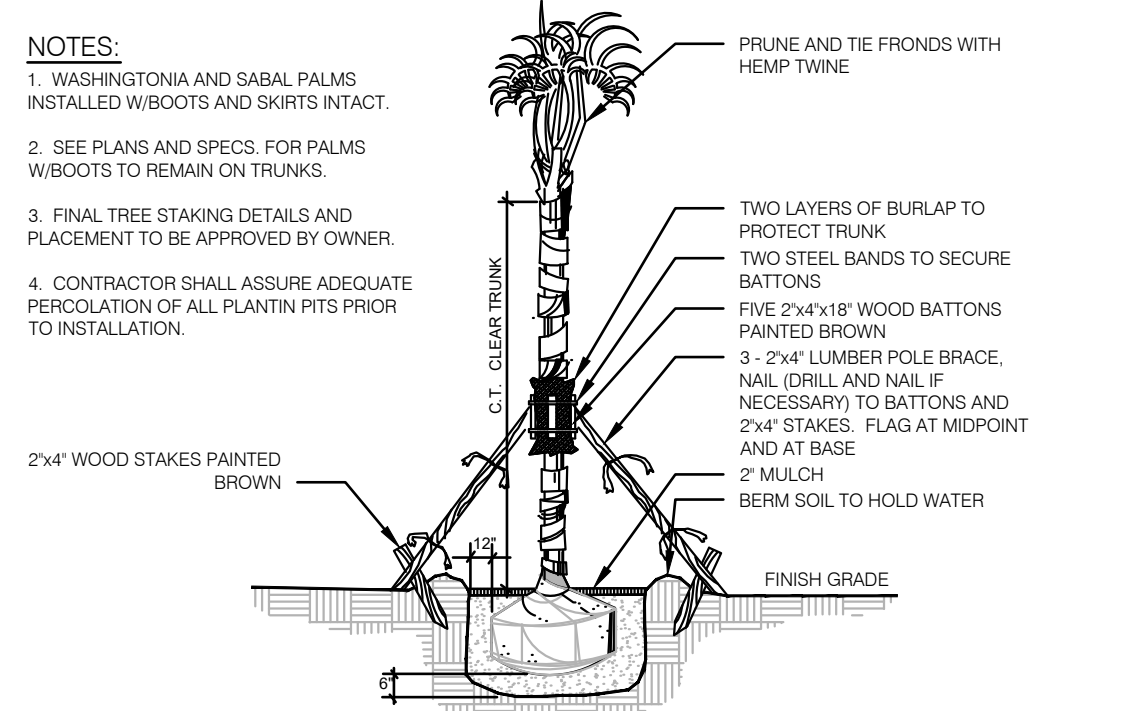
N.T.S.



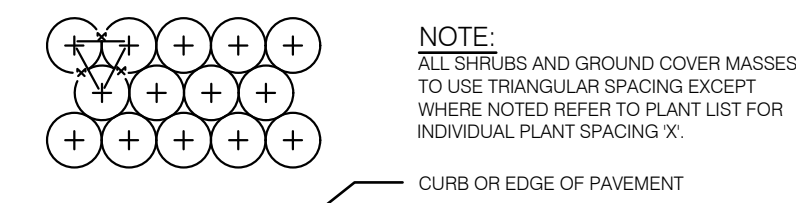
SMALL TREE GUYING DETAIL
Detail for trees smaller than 2" cal. NOT TO SCALE



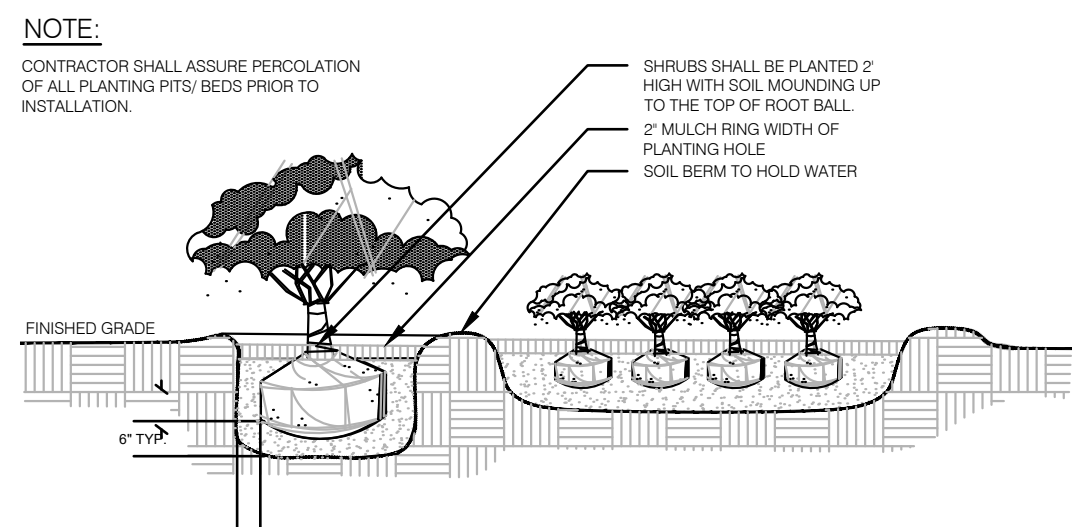
LARGE TREE GUYING DETAIL
Detail for trees greater than 2" cal. NOT TO SCALE



PALM TREE GUYING DETAIL
NOT TO SCALE



TYPICAL PLANT SPACING
NOT TO SCALE



SHRUB AND GROUND COVER DETAIL
NOT TO SCALE

LANDSCAPING & UTILITIES

1. All landscape plans must show the location of existing or proposed utility lines that could be impacted by the vegetation being planted. no landscaping shall be planted in such a manner as to adversely affect drainage or underground or above ground utility facilities.
2. No tree shall be planted where it could, at mature height, conflict with overhead power lines. Trees planted within any easement with overhead utilities shall comply with the latest edition of FPL's publication "Plant the Right Tree in the Right Place", and take into consideration the mature height and spread of the species beneath or adjacent to existing overhead utilities. Where overhead utilities exist, small trees, with a mature height of less than twenty (20) feet may be substituted for required shade trees at a ratio of 1:1.
3. All landscaping within ten (10) feet of underground or above ground Port St. Lucie Utility System Department (PSLUSD) utility infrastructure shall comply with PSLUSD technical specifications, policies and codes.
4. Trees shall not be planted within ten (10) feet of any PSLUSD underground infrastructure.
5. Tree of species whose roots are known to cause damage to public roadways, utilities, sidewalks, or other public works shall not be planted closer than 10 feet to those public works.
6. In those instances where a tree(s) is planted closer than five (5) feet from a sidewalk, or structure, a root barrier(s) shall be installed. Root barriers for trees shall be installed along the edge of structure, paving, or curb. The root barrier shall be a minimum of twenty-four (24) inches deep, but depending on size, location, and species of tree to be planted, a larger barrier may be required. The root barrier shall be installed with twenty (20) linear feet, centered from the trunk, for large trees and fifteen (15) linear feet for smaller trees. All root barriers shall be linear.
7. Vertical Clearance Over a Roadway. Trees that encroach into roadways shall be maintained in accordance with the St. Lucie County Fire District Fire Prevention Code.
8. No landscaping within five(5) feet of any PSL utility lines, only sod.
9. Trees to be 10' min. from street lights.

GENERAL LANDSCAPE NOTES

1. Landscape Contractor shall be responsible for all materials and plants as called for on the landscape plans. The list of plant quantities accompanying the plans shall be used as a guide only. Contractor shall verify all quantities and report any discrepancies at time of bidding.
2. All plant material shall be graded Florida No. 1 or better, as outlined by "Grades and Standards for Nursery Plants", Florida Department of Agriculture and Consumer Services, division of Plant Industry.
3. All planting shall be top dressed with a minimum 2" pine bark mini nuggets.
4. The Landscape Contractor shall be wholly responsible for the stability and plumb condition of all trees and shrubs and shall be legally liable for any damage caused by instability of plant material. The staking method, if not shown by detail on this plan, shall be approved by the owner or his/her authorized representative.
5. Every possible safeguard shall be taken to protect existing trees that are shown on the landscape plan to be preserved.
6. The Landscape Contractor is responsible for cleaning all debris associated with their work.
7. Height and spread specifications refer to the overall plant form. Singular branches may not be used to meet minimum requirements. Tree caliper size to be measured 12" above grade.
8. All landscaping shall be installed according to accepted commercial planting procedures. Soil, shall be free of limerock, pebbles, or other construction debris.
9. Ball & burlap material shall be an acceptable alternative to container grown trees.
10. Occasionally there is the potential for site modification due to revised field grading, clearing of existing tree canopy or other unforeseen conditions. The Landscape Contractor shall be responsible for informing the Owner and Landscape Architect of site conditions adverse to the healthy establishment of any plant material prior to planting so that a resolution may be achieved.
11. The Landscape Contractor shall be responsible for arranging a pre-construction meeting with the Owner and Landscape architect in order to address and clarify any questions, concerns and/or conditions related to these drawings or the existing site.
12. Landscape Contractor shall use appropriate container size to meet minimum plant height, if minimum plant height can not be met with specified container size.
13. Certification by Landscape Architect. The landscape architect shall certify in writing to the Director of Planning and Zoning that the landscaping and irrigation have been installed in accordance with the landscaping and irrigation plans approved by the Site Plan Review Committee. No certificates of occupancy or similar authorization will be issued unless the certification has been received verifying the landscaping and irrigation meet the requirements provided herein, and are in conformance with the approved landscape and irrigation plans for the project. This requirement shall not apply to single-family homes.
14. Plant Materials. Plant material used in conformance with the provisions of this chapter shall conform to the most recent standards for Florida No. 1 or better as given in "Grades and Standards for Nursery Plants", State of Florida, Department of Agriculture, or equal thereto. Trees and plants used in a required landscape design shall be cold-tolerant, drought-tolerant, or appropriate for the environmental setting in which they are to be planted. The "Waterwise South Florida Landscapes" plant guide, published by the South Florida Water Management District, as amended, should be used to determine appropriate vegetation. Plant materials which are known to be intolerant of paving environments or temperature below 32° F or 0° C, or whose physical characteristics may be injurious to the public or which produce a quantity and/or quality of debris so as to present maintenance difficulties shall not be specified for use.
15. Plant materials shall be approved native and suitable non-native trees, shrubs, and ground covers that require minimal maintenance when planted under appropriate conditions. Appendix D: City of Port St. Lucie Suggested Tree List and the South Florida Water Management District "Waterwise South Florida Landscapes" plant guide shall be used as a guide for choosing plant materials.
16. Trees shall be a species having an average mature spread of crown greater than 20 feet. Trees shall have a trunk that is maintained in a clean condition with over five feet of clear wood (no branches).

Digitally signed by **thomas Daly**
Date: 2021.03.30 12:31:44 -04'00'

CITY OF PORT ST. LUCIE PROJECT#
P-21-015
-P-19-491-
PSLUSD #5336

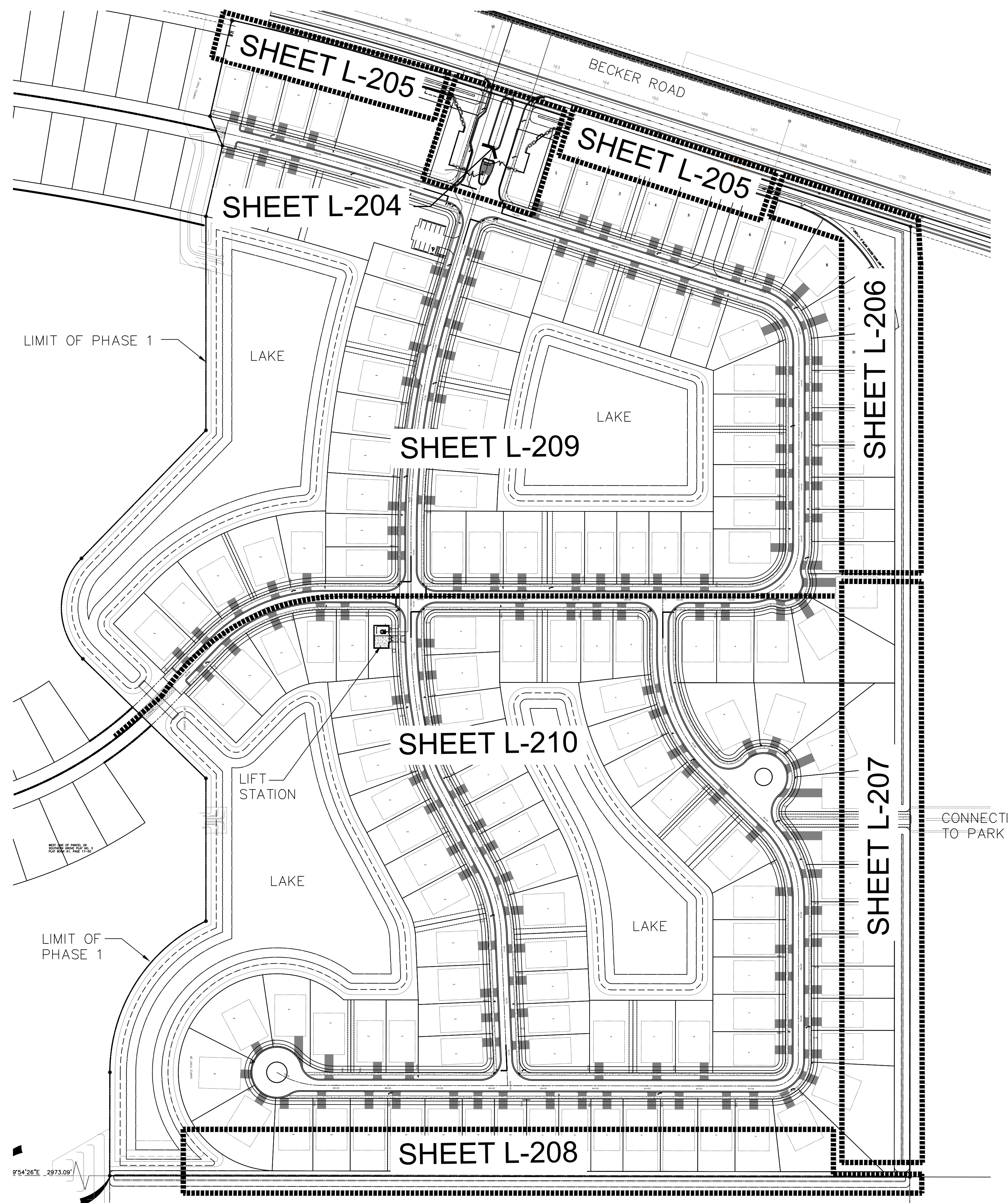
Date:

PROJECT NO.
1906
SCALE
DATE
NOV 2019
SHEET
L-002

daly design group inc.
Urban Planning, Landscape Architecture, Project Management, Development Consulting
913 N Pennsylvania Ave, Winter Park, FL 32789 (407) 740-7373 www.dalydesign.com

REV.	DATE	DESCRIPTION
1	01.29.20	REV. PER CITY COMMENTS
2	03.01.21	REV. STREET TREES PER CITY COMMENTS
2A	03.16.21	REV. STREET TREES PER COMMENTS
3	03.23.21	REV. WATER METERS PER COMMENTS
4	03.25.21	REV. STREET TREES PER COMMENTS

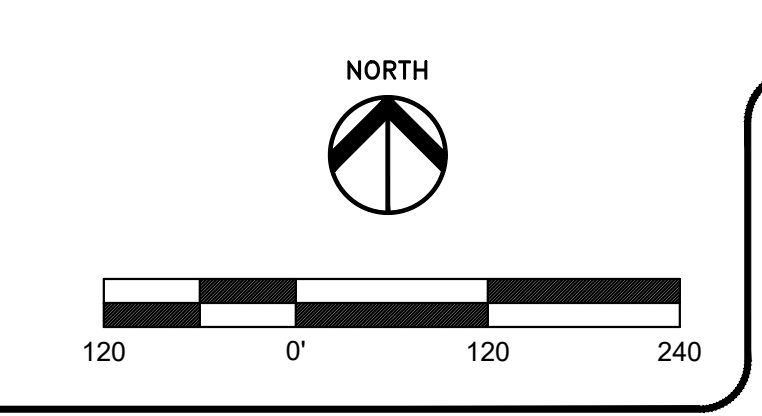
PLANT DETAILS / NOTES
LANDSCAPE CONSTRUCTION PLANS
Southern Groves
Port St. Lucie, Florida



KEY

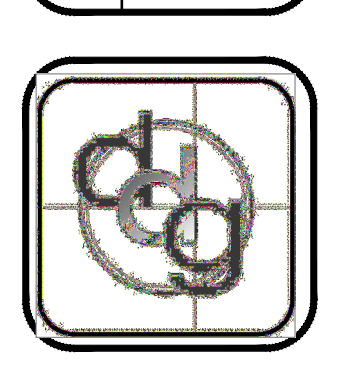
**thomas
s Daly** Digitally signed
by thomas Daly
Date:
2021.03.30
12:30:43 -04'00'

CITY OF PORT ST. LUCIE PROJECT#
P-21-015
P-19-191-
PSLUSD #5336



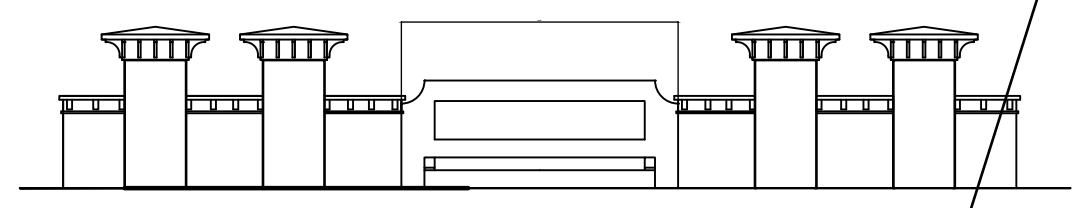
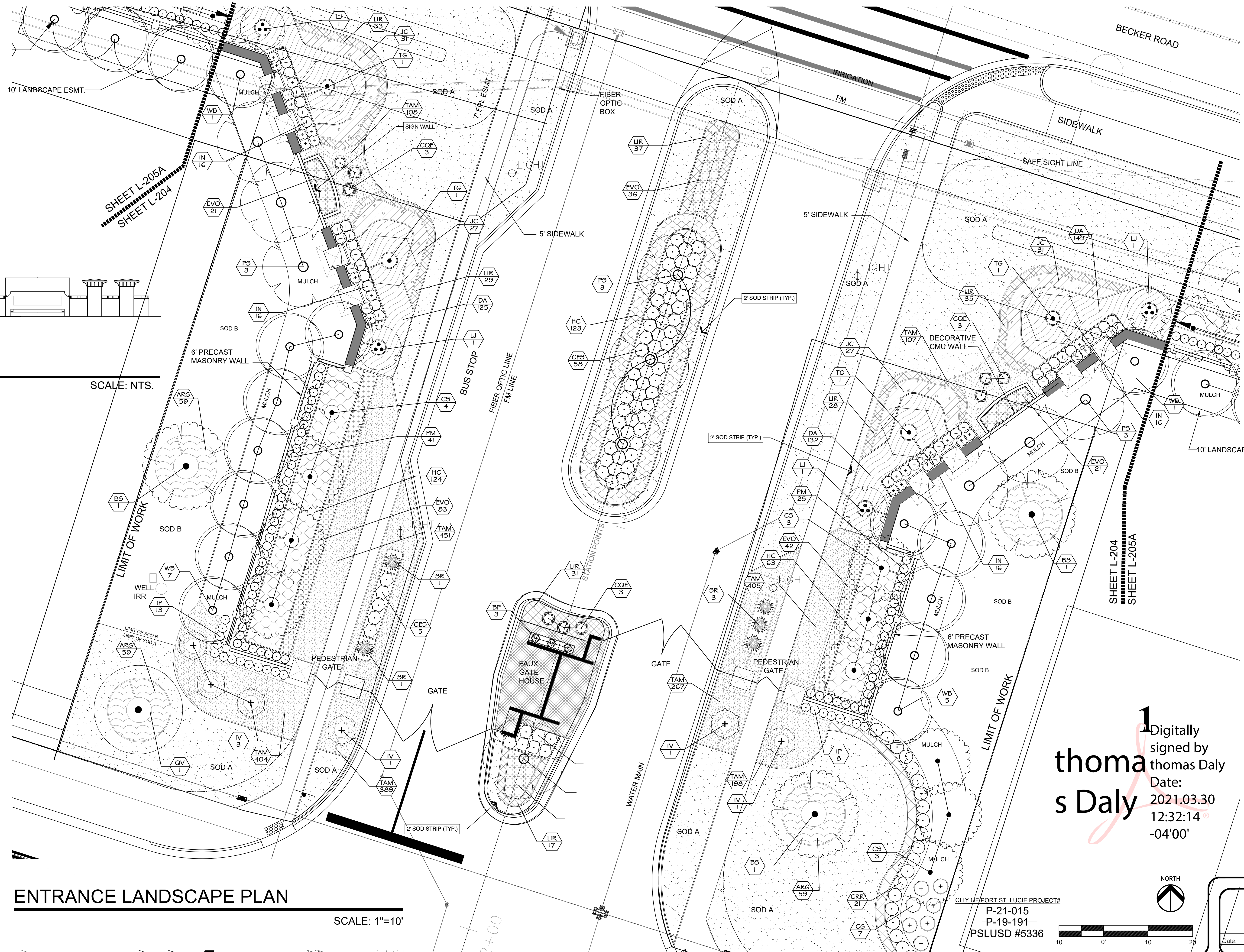
REV.	DATE	DESCRIPTION
4	03.25.21	REV. STREET TREES PER COMMENTS
3	03.23.21	REV. WATER METERS PER COMMENTS
2A	03.16.21	REV. STREET TREES PER COMMENTS
1	01.29.20	REV. PER CITY COMMENTS

KEY SHEET
LANDSCAPE CONSTRUCTION PLAN
Southern Groves
Port St. Lucie, Florida



PROJECT NO.
1906
SCALE
DATE
NOV 2019
SHEET
K-100

daly design group inc.
Urban Planning, Landscape Architecture, Project Management, Development Consulting
913 N Pennsylvania Ave, Winter Park, FL 32789 (407) 740-7373 www.dalydesign.com



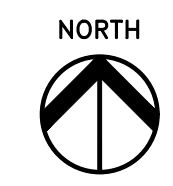
SIGN WALL

SCALE: N.T.S.

ENTRANCE LANDSCAPE PLAN

SCALE: 1"=10'

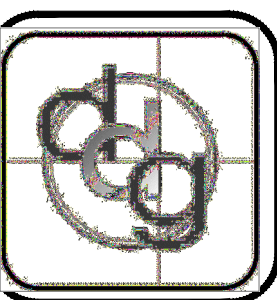
Digitally signed by
thomas Daly
 Date: 2021.03.30
 12:32:14
 -04'00'



CITY OF PORT ST. LUCIE PROJECT#
 P-21-015
 P-19-191
 PSLUSD #5336

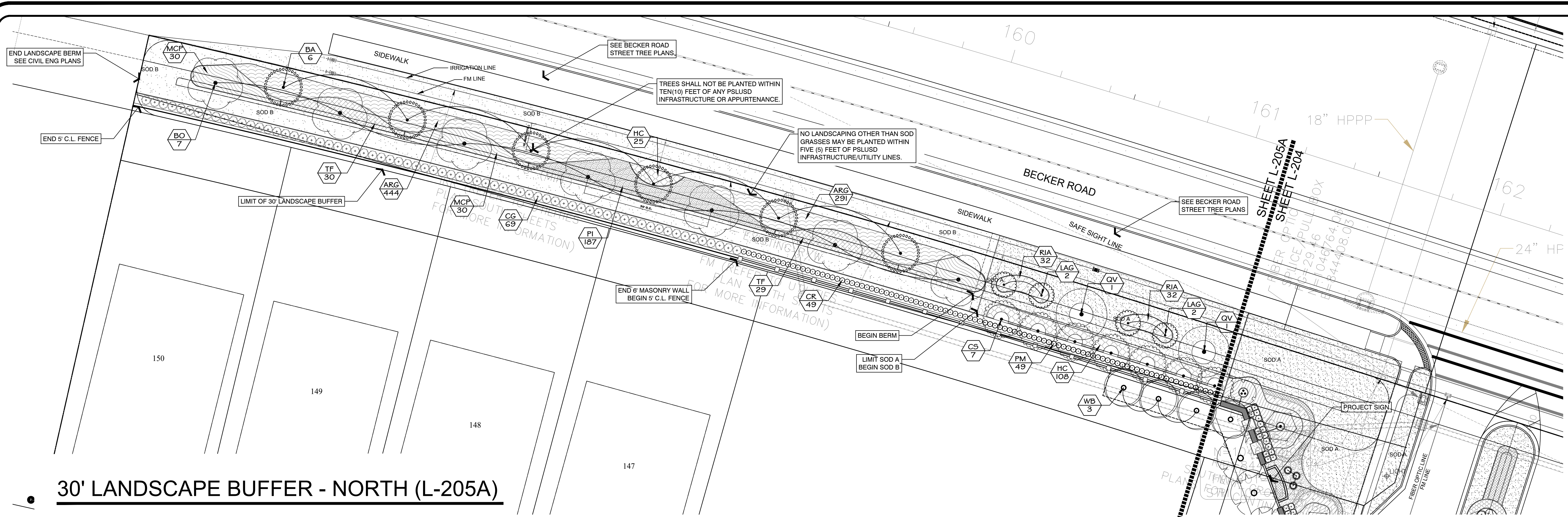
REV.	DATE	DESCRIPTION	BY
4	03.25.21	REV. STREET TREES PER COMMENTS	
3	03.23.21	REV. WATER METERS PER COMMENTS	
2A	03.16.21	REV. STREET TREES PER COMMENTS	
2	03.01.21	REV. STREET TREES PER CITY COMMENTS	
1	01.29.20	REV. PER CITY COMMENTS	

ENTRANCE LANDSCAPE PLAN
LANDSCAPE CONSTRUCTION PLANS
SOUTHERN GROVES
 Port St. Lucie, Florida

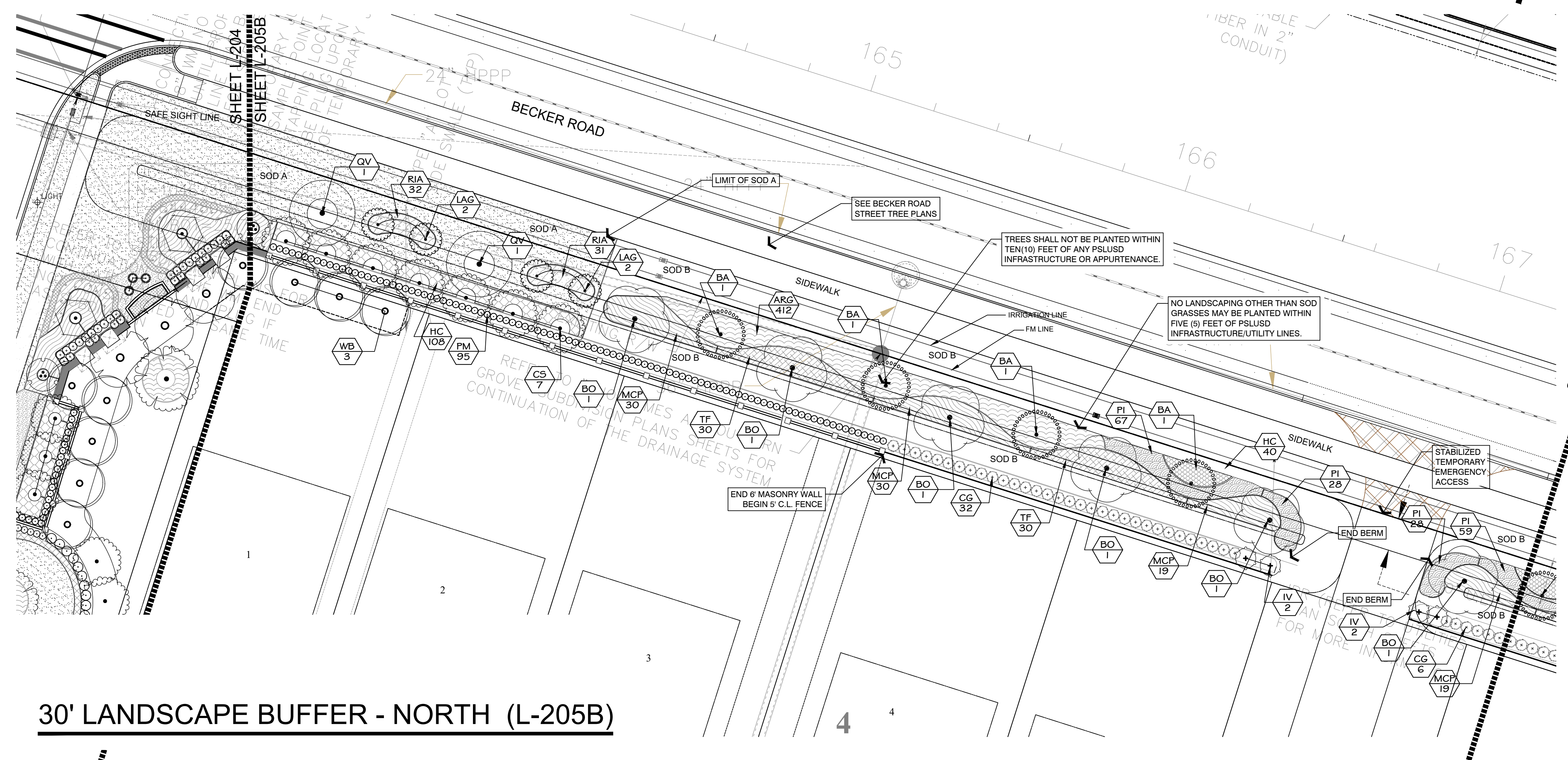


PROJECT NO.
 1906
 SCALE
 DATE
 DEC 2019
 SHEET
 L-204

daly design group inc.
 Urban Planning, Landscape Architecture, Project Management, Development Consulting
 913 N Pennsylvania Ave, Winter Park, FL 32789 (407) 740-7373 www.dalydesign.com



30' LANDSCAPE BUFFER - NORTH (L-205A)



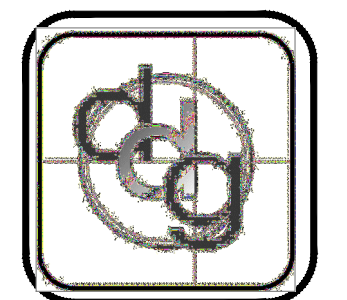
30' LANDSCAPE BUFFER - NORTH (L-205B)

thomas Daly
 Digitally signed by thomas Daly
 Date: 2021.03.30 12:32:46 -04'00'

CITY OF PORT ST. LUCIE PROJECT#
 P-21-015
 P-19-191
 PSLUSD #5336

REV.	DATE	DESCRIPTION	BY
4	03.25.21	REV. STREET TREES PER COMMENTS	
3	03.23.21	REV. WATER METERS PER COMMENTS	
2A	03.16.21	REV. STREET TREES PER COMMENTS	
2	03.01.21	REV. STREET TREES PER CITY COMMENTS	
1	01.29.20	REV. PER CITY COMMENTS	

**30' LANDSCAPE BUFFER - NORTH
 LANDSCAPE CONSTRUCTION PLAN**
 Southern Groves
 Port St. Lucie, Florida



PROJECT NO.
 1906
 SCALE

DATE
 NOV 2019
 SHEET
 L-205

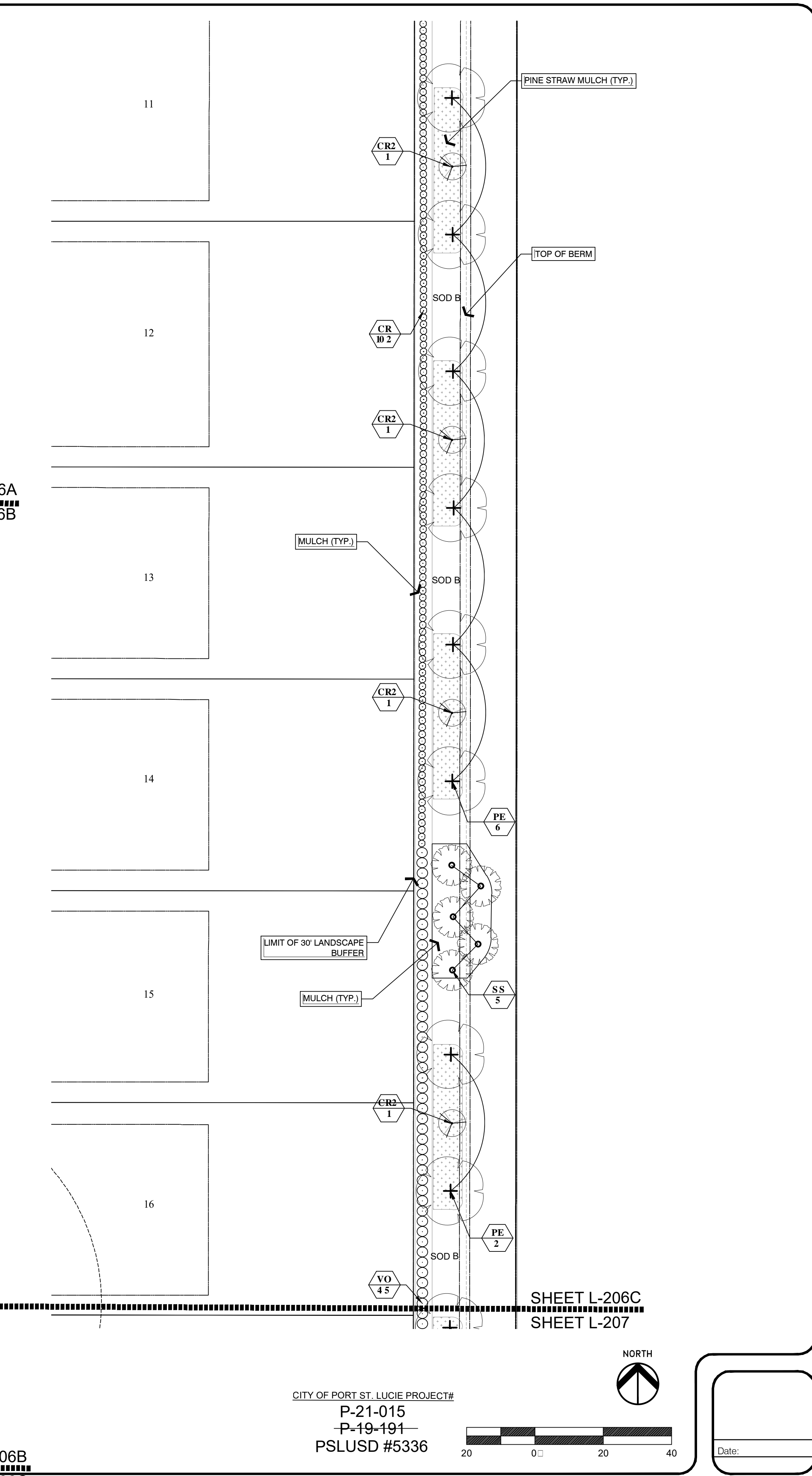
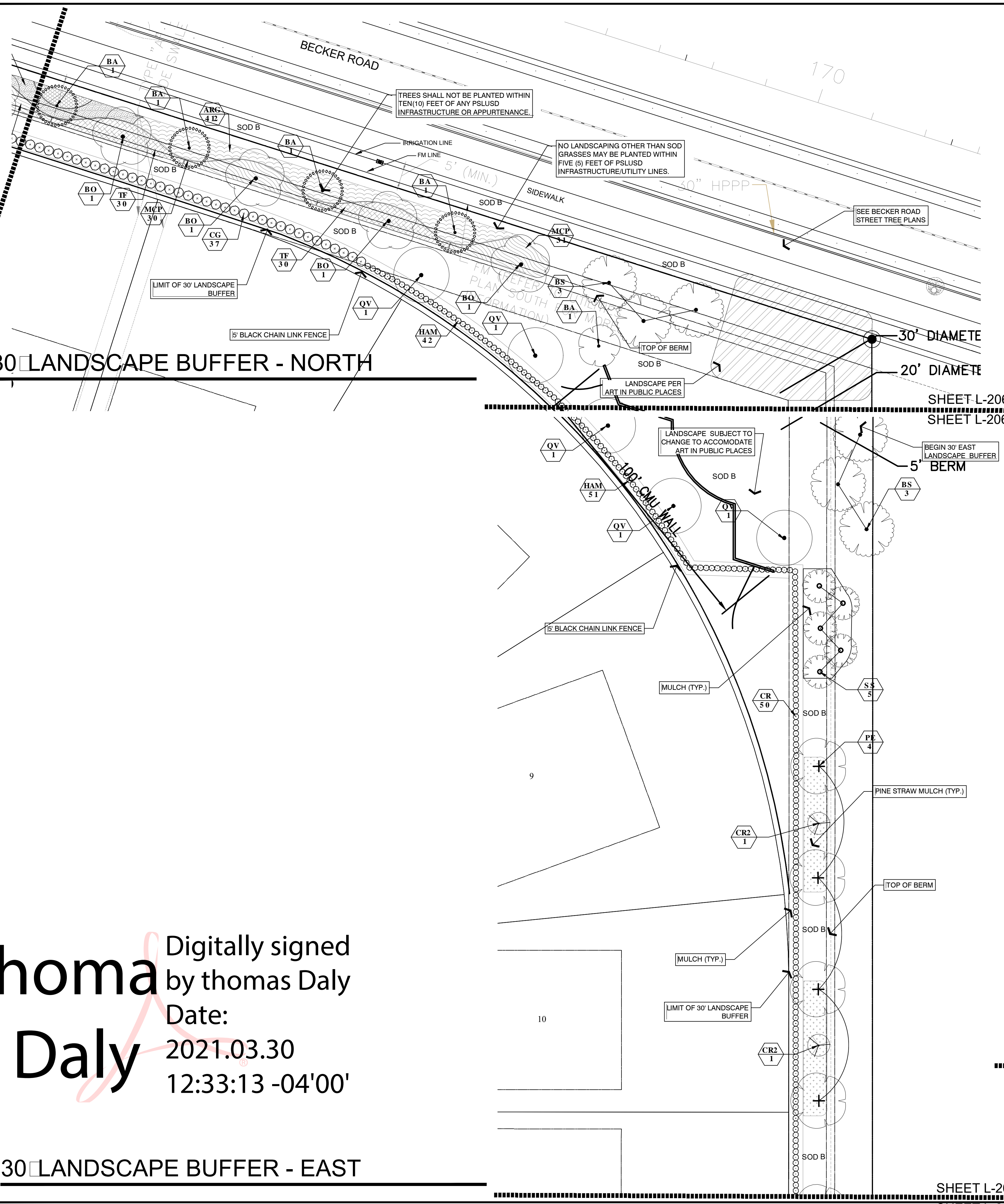
daly design group inc.
 Urban Planning, Landscape Architecture, Project Management, Development Consulting
 913 N Pennsylvania Ave, Winter Park, FL 32789 (407) 740-7373 www.dalydesign.com

SHEET L-205
SHEET L-206

30' LANDSCAPE BUFFER - NORTH

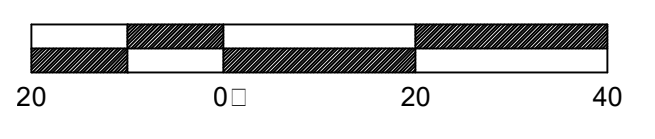
30' LANDSCAPE BUFFER - EAST

**thomas
s Daly** Digitally signed
by thomas Daly
Date: 2021.03.30
12:33:13 -04'00'



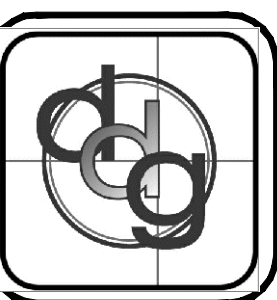
SHEET L-206B
SHEET L-206C

CITY OF PORT ST. LUCIE PROJECT#
P-21-015
P-19-191
PSLUSD #5336



Date:

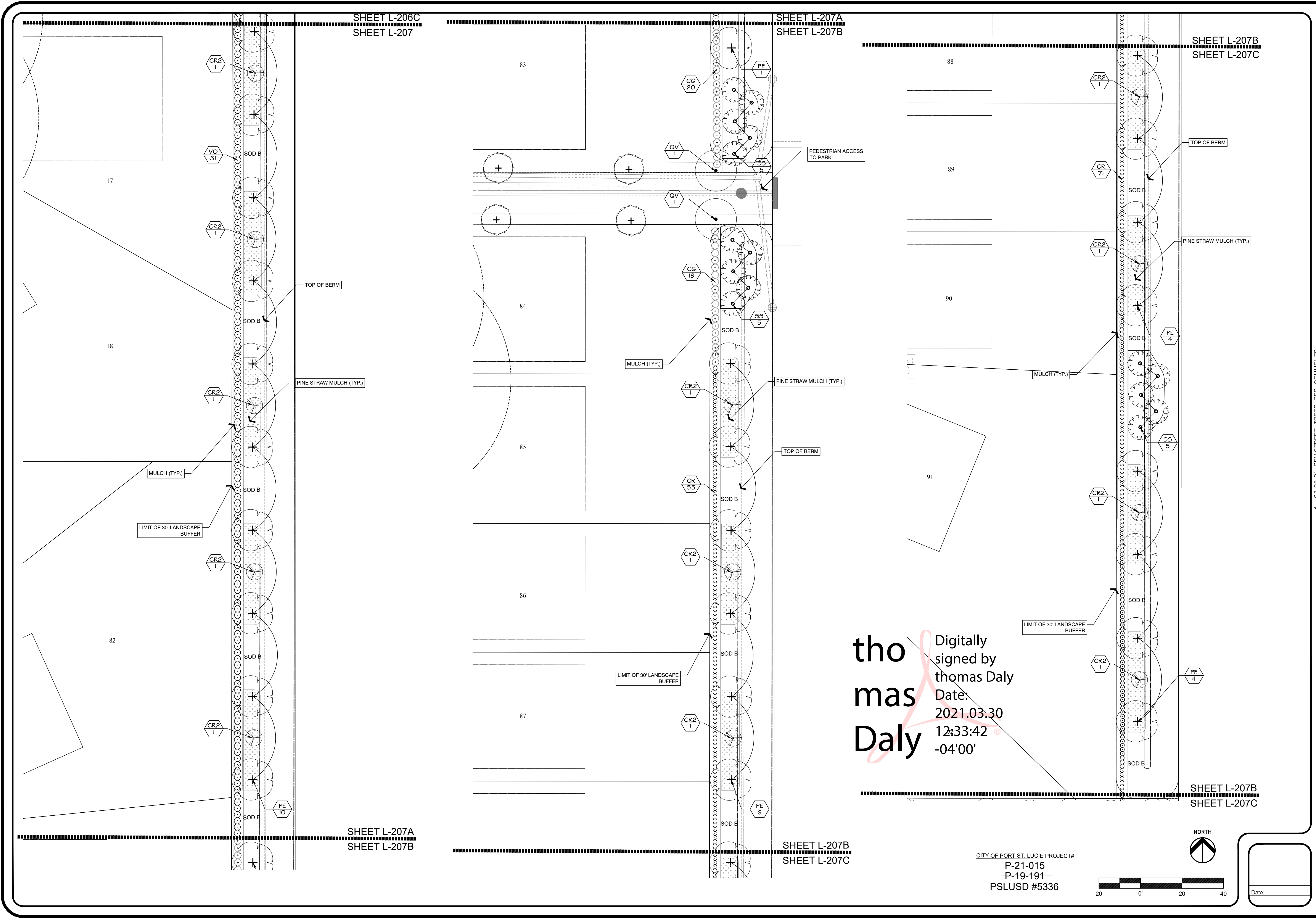
30' LANDSCAPE BUFFER - NORTH/EAST
LANDSCAPE CONSTRUCTION PLAN
Southern Groves
Port St. Lucie, Florida



PROJECT NO.
1906
SCALE
DATE
NOV 2019
SHEET
L-206

REV.	DATE	DESCRIPTION	BY
1	01.29.20	REV. PER CITY COMMENTS	
2	03.01.21	REV. STREET TREES PER CITY COMMENTS	
2A	03.16.21	REV. STREET TREES PER COMMENTS	
3	03.23.21	REV. WATER METERS PER COMMENTS	
4	03.25.21	REV. STREET TREES PER COMMENTS	

daly design group inc.
Urban Planning, Landscape Architecture, Project Management, Development Consulting
913 N Pennsylvania Ave, Winter Park, FL 32789 (407) 740-7373 www.dalydesign.com



thomas Daly
 Digitally signed by thomas Daly
 Date: 2021.03.30 12:33:42 -04'00'

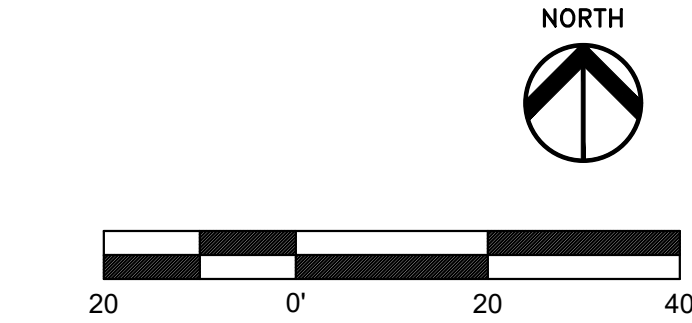
daly design group inc.
 Urban Planning, Landscape Architecture, Project Management, Development Consulting
 913 N Pennsylvania Ave, Winter Park, FL 32789 (407) 740-7373 www.dalydesign.com

REV.	DATE	DESCRIPTION	BY
1	01.29.20	REV. PER CITY COMMENTS	
2	03.01.21	REV. STREET TREES PER CITY COMMENTS	
2A	03.16.21	REV. STREET TREES PER COMMENTS	
3	03.23.21	REV. WATER METERS PER COMMENTS	
4	03.25.21	REV. STREET TREES PER COMMENTS	

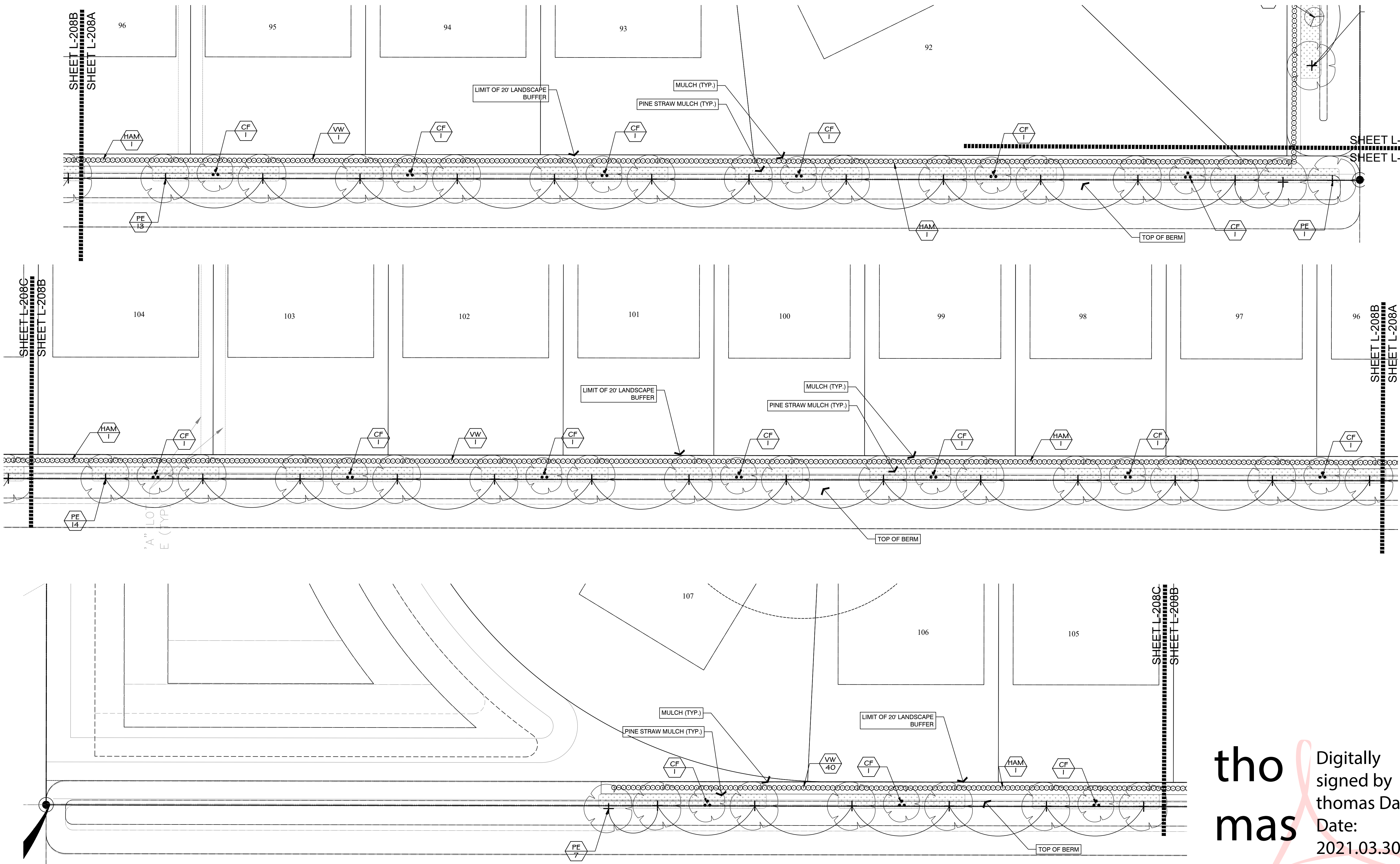
30' LANDSCAPE BUFFER - EAST
LANDSCAPE CONSTRUCTION PLAN
Southern Groves
 Port St. Lucie, Florida

PROJECT NO. 1906
 SCALE
 DATE NOV 2019
 SHEET L-207

CITY OF PORT ST. LUCIE PROJECT#
 P-21-015
 P-19-191
 PSLUSD #5336

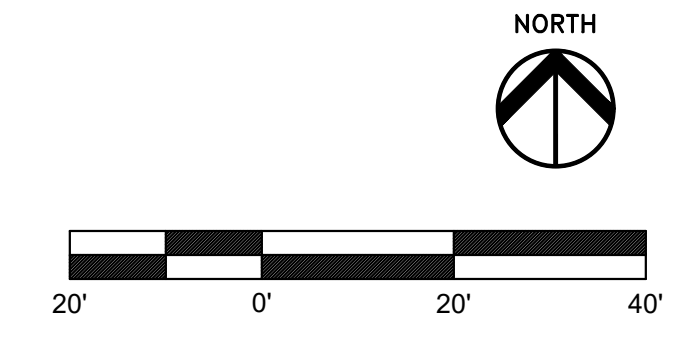


Date: _____



thomas Daly
 Digitally signed by
 thomas Daly
 Date:
 2021.03.30
 12:34:10
 -04'00'

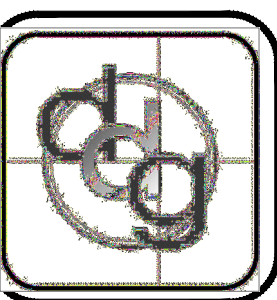
CITY OF PORT ST. LUCIE PROJECT#
 P-21-015
 P-19-191
 PSLUSD #5336



daly design group inc.
 Urban Planning, Landscape Architecture, Project Management, Development Consulting
 913 N Pennsylvania Ave, Winter Park, FL 32789 (407) 740-7373 www.dalydesign.com

REV.	DATE	DESCRIPTION	BY
1	01.29.20	REV. PER CITY COMMENTS	
2	03.01.21	REV. STREET TREES PER CITY COMMENTS	
2A	03.16.21	REV. STREET TREES PER COMMENTS	
3	03.23.21	REV. WATER METERS PER COMMENTS	
4	03.25.21	REV STREET TREES PER COMMENTS	

20' LANDSCAPE BUFFER - SOUTH
 LANDSCAPE CONSTRUCTION PLAN
 Southern Groves
 Port St. Lucie, Florida



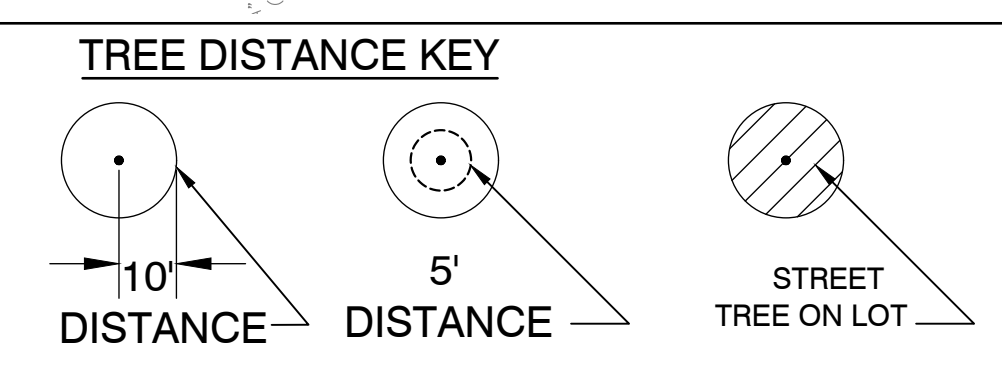
PROJECT NO.
 1906
 SCALE
 DATE
 NOV 2019
 SHEET
 L-208

thomas
mas
Daly

Digitally signed by
thomas Daly
Date:
2021.03.30
12:35:10
-04'00'

LIFT STATION PLANT LIST

TREES	QTY	BOTANICAL NAME	COMMON NAME	REMARKS
BS	1	Bursera simaruba	Gumbo Limbo	MIN. 65 GAL., 14' HT., 2.5' CAL.
IV	5	Ilex vomitoria	Yaupon Holly	MIN. 30 GAL., 8' HT., MULTI TRUNK.
SHRUBS	QTY	BOTANICAL NAME	COMMON NAME	REMARKS
PM	56	Podocarpus macrophyllus	Podocarpus	MIN. 7 GAL., 36"HT X 24" SPR., 24"OC.
SHRUB AREAS	QTY	BOTANICAL NAME	COMMON NAME	REMARKS
MCP	45	Muhlenbergia capillaris	Pink Muhly	MIN. 3 GAL., 24" HT. x 24" SPR., 36"O.C.
GROUND COVERS	QTY	BOTANICAL NAME	COMMON NAME	REMARKS
ARG	66	Arachis glabrata	Perennial Peanut	MIN. 1 GAL., 18" OC.



STREET TREE PLAN

CITY OF PORT ST. LUCIE PROJECT#
P-21-015
P-19-191
PSLUSD #5336

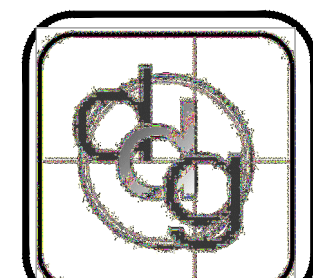
Scale: 1" = 60'

North Arrow

daly design group inc.
Urban Planning, Landscape Architecture, Project Management, Development Consulting
913 N Pennsylvania Ave, Winter Park, FL 32789 (407) 740-7373 www.dalydesign.com

REV.	DATE	DESCRIPTION	BY
4	03.25.21	REV. STREET TREES PER COMMENTS	
3	03.23.21	REV. WATER METERS PER COMMENTS	
2A	03.16.21	REV. STREET TREES PER COMMENTS	
2	03.01.21	REV. STREET TREES PER CITY COMMENTS	
1	01.29.20	REV. PER CITY COMMENTS	

STREET TREES
LANDSCAPE CONSTRUCTION PLAN
Southern Groves
Port St. Lucie, Florida



PROJECT NO.
1906
SCALE

DATE
NOV 2019
SHEET
L-210