

GENERAL NOTES

1. BOUNDS OF SCOPE OF WORK ARE TO THE EXTENT REQUIRED TO COMPLETE THE WORK.
2. REFER TO CIVIL AND MEP FOR UTILITIES AND ACCESS POINTS.
3. REFER TO CIVIL AND LANDSCAPE FOR MORE INFORMATION.

ZONING LEGEND

*ZONING DISTRICT: MPUD
 *LAND USE: VAC - GOVT
 FEMA FLOOD ZONE: FLOOD ZONE X (BASED ON SURVEY)
 BASE FLOOD ELEVATION (BFE): NA FOR ZONE X
 GROSS LOT AREA: 108,918 SF (2.5 ACRES)
 BUILDING FOOTPRINT: 11,575
 GROSS BUILDING AREA: XXX
 **BUILDING HEIGHT: 35' ALLOWED, 25' 7" PROPOSED
 ***BUILDING SETBACKS:
 FRONT YARD (EAST) XX' REQ., 25' PROPOSED
 SIDE YARD (NORTH, SOUTH) XX' REQ., 10' PROPOSED
 REAR YARD (WEST) XX' REQ., 10' PROPOSED
 ****9.01.01 - PERMITTED PERMANENT SIGNS:
 MONUMENT SIGN REQ. 1 SF FOR EVERY 2 LINEAR FEET OF FRONTAGE - 100 SF MAX PROPOSED, 72 SF
 BUILDING SIGN REQ. 20% OF WALL FACE AREA FRONTING ON THE MAIN STREET PROPOSED, 4%

SITE PLAN LEGEND

- 'X'-X' AFF FINISH FLOOR LEVEL AT BUILDING ENTRY POINT
- AREA N.I.C.
- NEW BUILDING
- GREENSPACE
- ACCESSIBLE ROUTE
- PROPERTY LINE
- SETBACK
- ROOF OVERHANG
- EASEMENT
- FENCE
- FDC FIRE DEPARTMENT CONNECTION
- XX NUMBER OF PARKING SPACES

SPECIFIC KEYNOTES - SITE	
NUMBER	TEXT
AS02	LIGHT POLE, REFER TO ELECTRICAL
AS03	FIRE HYDRANT, REFER TO FIRE PROTECTION
AS04	MONUMENT SIGN, REFER TO STRUCTURAL
AS07	CHAINLINK TRASH ENCLOSURE, DELEGATED DESIGN. SEE SHEET G-107 FOR REFERENCE.
AS08	GRINDER STATION, TRANSFORMER & ELECTRICAL CONNECTION, REFER TO CIVIL.
AS09	CONCRETE PATIO, REFER TO CIVIL
AS10	RELOCATED FLAG POLE
AS11	FUEL STATION, REFER TO CIVIL
AS12	POWDER COATED ROUND TUBE WAVE BICYCLE RACK, SHOULD FIT 6 BIKES. COLOR: TBD BY OWNER
AS14	20' ACCESS EASEMENT, REFER TO CIVIL
AS15	DRY DETENTION AREA, REFER TO CIVIL
AS16	EXTERIOR LIGHT FIXTURE, REFER TO ELECTRICAL
AS19	CONCRETE DRIVE, REFER TO CIVIL
AS20	6" CONCRETE FILLED STEEL PIPE BOLLARD, REFER STRUCTURAL, CIVIL, AND SPECS
AS21	LIGHT POLE, REFER TO ELECTRICAL
AS23	NEW STRIPPING PAVEMENT MARKINGS. COORDINATE LOCATION AND COLOR WITH OWNER.
AS34	LITTER RECEPTACLE WITH ASHTRAY LID, BASIS OF DESIGN - VICTOR STANLEY - 24 GALLON MODEL A-24. COLOR TBD BY OWNER. REFER TO SPECIFICATIONS.

PARKING COUNT - FIRE STATION

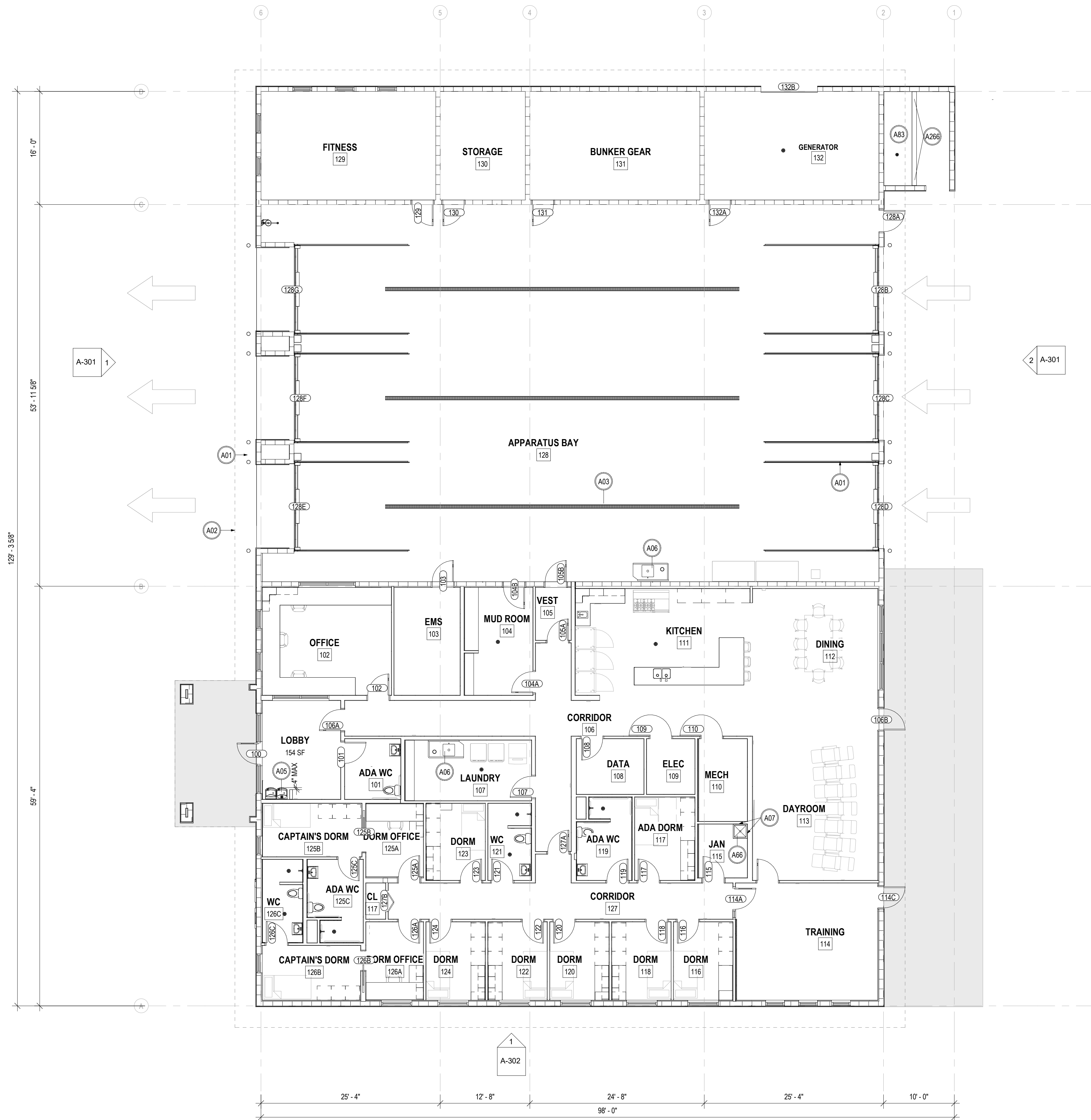
USE	REQUIREMENT	TOTAL REQ.	PROVIDED	H.C. REQ.	H.C. PROV.	BICYCLE REQ.	BICYCLE PROV.
BUSINESS OFFICE	2.84 PER 1000 SF OF AREA FOR BUSINESS	6	21	1	1	6	6
DORMITORIES	1.23 PER DORM	11					

* PER INSTITUTE OF TRANSPORTATION ENGINEER PARKING GENERATION - 4TH EDITION
 * SIX BICYCLE SPACES REQUIRED PER 7 05 04 C

THIS DOCUMENT IS THE PROPERTY OF WANNEMACHER JENSEN ARCHITECTS, INC. AND IS NOT TO BE REPRODUCED OR TRANSMITTED IN ANY FORM OR BY ANY MEANS, ELECTRONIC OR MECHANICAL, INCLUDING PHOTOCOPYING, RECORDING, OR BY ANY INFORMATION STORAGE AND RETRIEVAL SYSTEM, WITHOUT THE WRITTEN PERMISSION OF WANNEMACHER JENSEN ARCHITECTS, INC. THE ARCHITECTS ASSUME NO LIABILITY FOR CONSTRUCTION ERRORS OR OMISSIONS. THE ARCHITECTS MAKE NO WARRANTY, EXPRESS OR IMPLIED, REGARDING THE ACCURACY, COMPLETENESS, OR QUALITY OF THE INFORMATION PROVIDED. THE ARCHITECTS SHALL NOT BE RESPONSIBLE FOR ANY ERRORS OR OMISSIONS IN ANY DOCUMENTS PREPARED BY OTHER PROFESSIONALS WHOSE SERVICES ARE REFERENCED IN THIS DOCUMENT.

Project number
2322

DISTRIBUTION
 MILESTONE DATE
 SD 06/29/23



GENERAL NOTES

1. PROVIDE SUPPORT FOR WALL MOUNTED CABINETS AND PLUMBING FIXTURES. STEEL STUDS SUPPORTING WALL MOUNTED FIXTURES TO BE DOUBLED AT 16 O.C. OR NOT LESS THAN 20 GAUGE PER FBC 2517.5.1.1.
2. COMBUSTIBLE MATERIALS IN TYPES I & II CONSTRUCTION TO COMPLY WITH FBC 603.1 (FIRE RETARDANT - TREATED WOOD) AND 805.1 & 806.1
3. SEE SHEETS A-801 TO A-805 FOR PARTITION TYPE DETAILS AND NOTES, A-810 FOR DOOR SCHEDULE, A-820 & A-821 FOR STOREFRONT ELEVATIONS AND DETAILS.
4. SEE A-118 & A-119 FOR PARTITION TYPE PLANS FOR WALL TAG INFORMATION.
5. SEE SHEET A-201 & A-202 FOR ADDITIONAL WALL TAGS ON HIGH WALLS.
6. PROVIDE IMPACT RESISTANT GYPSUM BOARD ON ALL WALLS UP TO 8'.
7. PROVIDE SUPPORT FOR ALL WALL HUNG CABINETS, TV'S/ SMARTBOARDS, GRAB BARS, AND PLUMBING FIXTURES.
8. PROVIDE CEMENTITIOUS BACKERBOARD IN PLACE OF GWB AT ALL LOCATIONS SHOWING TILE FINISH. SEE ID SHEETS FOR FINISH PLANS.
9. PROVIDE ABUSE RESISTANT GWB UP TO 8' AFF AT ALL GWB PARTITIONS.

SPECIFIC KEYNOTE - PLANS	
Keynote Number	Keynote Text
A01	6" CONCRETE FILLED STEEL PIPE BOLLARD, REFER STRUCTURAL, CIVIL, AND SPECS
A02	ROOF OVERHANG EDGE ABOVE
A03	GALVANIZED FLOOR DRAIN, SLOPE FLOOR 1% TO DRAIN. REFER TO PLUMBING
A04	PAINTED STEEL COLUMN WITH CONCRETE BARRIER AROUND BASE FOR 36", REFER STRUCTURAL
A05	BI-LEVEL WATER FOUNTAIN, REFER TO PLUMBING
A06	STAINLESS STEEL UTILITY SINK. REFER TO PLUMBING SCHEDULE
A07	HOUSEKEEPING PAD. REFER TO STRUCTURAL.
A25	READYSPEC BACKBOARD IN DATA ROOM, REFER SPECIFICATIONS.
A60	ALUMINUM TUBULAR LADDER. POWDER COATED, COLOR TBD, DELEGATED DESIGN. COMPLY WITH OSHA REQUIREMENTS. REFER TO SPECIFICATIONS.
A66	MOP SINK WITH STAINLESS STEEL WALL GUARDS. REFER TO PLUMBING
A79	ISOLATED SLAB. REFER TO STRUCTURAL
A83	12" CONCRETE CURB. WEEPS EVERY 24"
A266	SLOPE TO WEEPS ALONG WALL. WEEPS EVERY 24". SLOPES NOT TO EXCEED 2%.

THIS DOCUMENT IS THE PROPERTY OF WANNEMACHER JENSEN ARCHITECTS, INC. IT IS TO BE USED ONLY FOR THE PROJECT AND SITE SPECIFICALLY IDENTIFIED HEREIN. IT IS NOT TO BE REPRODUCED, COPIED, OR TRANSMITTED IN ANY FORM OR BY ANY MEANS, ELECTRONIC OR MECHANICAL, WITHOUT THE WRITTEN PERMISSION OF WANNEMACHER JENSEN ARCHITECTS, INC. ANY UNAUTHORIZED USE OF THIS DOCUMENT IS STRICTLY PROHIBITED. THE ARCHITECT ASSUMES NO LIABILITY FOR CONSTRUCTION ERRORS OR OMISSIONS. THE ARCHITECT'S RESPONSIBILITY IS LIMITED TO THE DESIGN AND CONSTRUCTION OF THE BUILDING. THE ARCHITECT DOES NOT GUARANTEE THE ACCURACY OF ANY INFORMATION PROVIDED BY OTHERS. THE ARCHITECT'S DESIGN IS BASED ON THE INFORMATION PROVIDED BY OTHERS. THE ARCHITECT DOES NOT GUARANTEE THE ACCURACY OF ANY INFORMATION PROVIDED BY OTHERS. THE ARCHITECT'S DESIGN IS BASED ON THE INFORMATION PROVIDED BY OTHERS.

Wannemacher Jensen Architects, Inc.
 132 Mirror Lake Drive N, Unit 301
 St. Petersburg, Florida 33701-3214
 (727) 822-5566
 www.wjarc.com
 AF94244
 ©Wannemacher Jensen Architects, Inc.

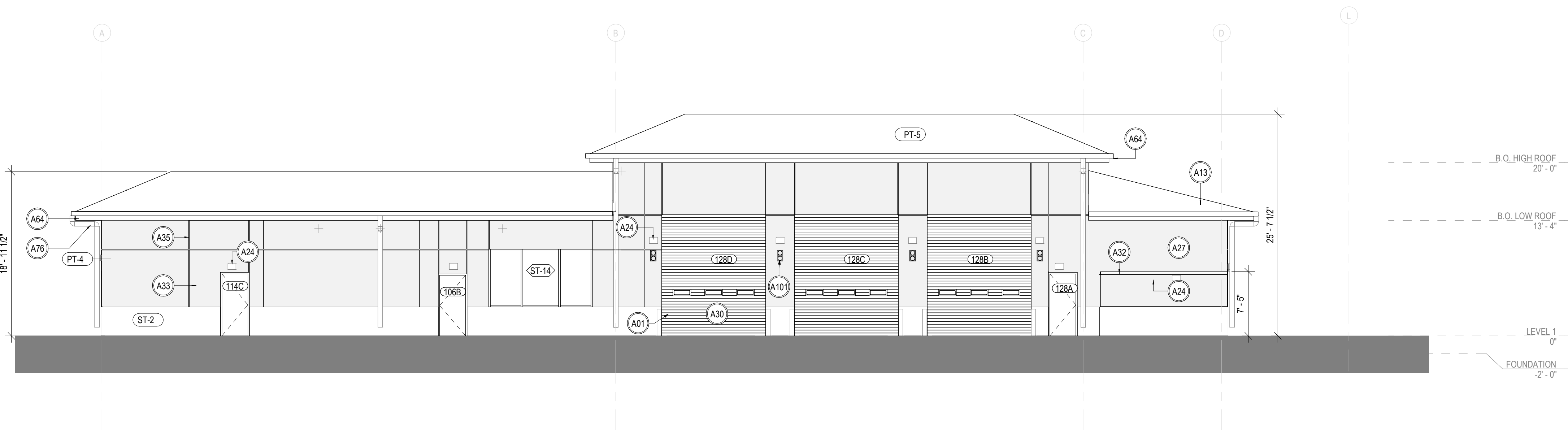
ST. LUCIE FIRE STATION VILLAGE PARKWAY
 ST. LUCIE COUNTY FIRE DISTRICT

Project number
2322
 DISTRIBUTION

MILESTONE	DATE
SD	06/29/23



1 EAST ELEVATION
1/8" = 1'-0"



2 WEST ELEVATION
1/8" = 1'-0"

SPECIFIC KEYNOTE - ELEVATIONS	
Keynote Number	Keynote Text
A01	6" CONCRETE FILLED STEEL PIPE BOLLARD. REFER STRUCTURAL, CIVIL, AND SPECS
A09	CONTOURED SIGN OF FIRE STATION SEAL. ILLUMINATED FACE LIT CABINET. FACE TO BE POLYCARBONATE WITH DIGITALLY PRINTED TRANSLUCENT VINYL GRAPHIC OVERLAY. DELEGATED DESIGN. REFER TO ELECT DWGS FOR POWER REQUIREMENTS.
A13	STANDING SEAM METAL ROOF. COLOR TO MEET TABLE 9.2 OF CITYWIDE DESIGN STANDARDS
A17	OVERFLOW SCUPPER
A24	EXTERIOR LED SCONCE. REFER TO RCP FOR MOUNTING HEIGHT AND ELECTRICAL.
A26	MECHANICAL EQUIPMENT. REFER TO MECHANICAL
A27	PAINTED 5/8" STUCCO SYSTEM. COLOR: TBD
A30	HURRICANE RATED SECTIONAL DOOR. REFER TO DOOR SCHEDULE
A32	PREFINISHED SLOPED METAL COPING WITH DRIP EDGE. TYP. COLOR: TBD
A33	EXTERIOR ALUMINUM STOREFRONT GLAZING SYSTEM. MISSILE LEVEL E IMPACT RATED. REFER TO SPECIFICATIONS. REFER TO FPA FOR FRAMING REQUIREMENTS.
A35	1/2" PAINTED STUCCO CONTROL SLIP JOINT TO ALIGN WITH WALL REVEALS. NO LOCATION TO EXCEED 100SF OR GREATER THAN 15' APART. TYP. COLOR: TBD BY OWNER.
A38	FOAMED-IN-PLACED INSULATED CMU BLOCK. REFER TO PARTITION TYPE. REFER TO SPECIFICATIONS
A51	PRIMARY SCUPPER AND DOWNSPOUT. COORDINATE WITH PLUMBING AND CIVIL
A54	BACKLIT POWDER COATED ALUMINUM SIGNAGE "FIRE STATION 20". DELEGATED DESIGN. COLOR: TBD
A64	CONTINUOUS K-STYLE 6 INCH GUTTER SYSTEM
A76	EXTERIOR 7/8" PAINTED STUCCO SOFFIT SYSTEM
A101	RED AND GREEN INDICATOR LIGHT. REFER TO TECH AND ELEC.
A184	CONCRETE CURB. REFER TO STRUCTURAL
A258	GUTTER DOWNSPOUT 6" DIAMETER. COORDINATE WITH PLUMBING AND CIVIL

FINISH LEGEND

- (PT-3) DESCRIPTION: EXTERIOR PAINT ON STUCCO
COLOR: TBD
REMARKS: FASCIA TO MATCH
- (ST-2) DESCRIPTION: LIMESTONE CLADDING
- (PT-5) DESCRIPTION: COLOR FOR STANDING SEAM ROOF
COLOR: TBD

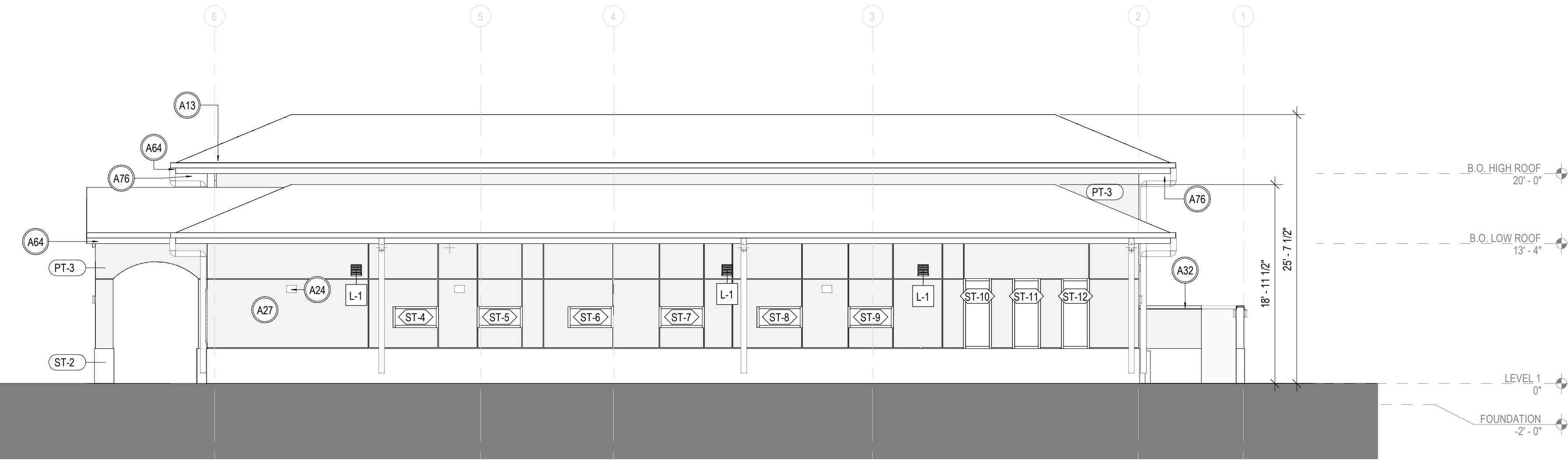
THIS DOCUMENT IS THE PROPERTY OF WANNEMACHER JENSEN ARCHITECTS, INC. AND IS NOT TO BE REPRODUCED OR TRANSMITTED IN ANY FORM OR BY ANY MEANS, ELECTRONIC OR MECHANICAL, INCLUDING PHOTOCOPYING, RECORDING, OR BY ANY INFORMATION STORAGE AND RETRIEVAL SYSTEM, WITHOUT THE WRITTEN PERMISSION OF WANNEMACHER JENSEN ARCHITECTS, INC. ANY REPRODUCTION OR TRANSMISSION OF THIS DOCUMENT WITHOUT THE WRITTEN PERMISSION OF WANNEMACHER JENSEN ARCHITECTS, INC. IS STRICTLY PROHIBITED. THE ARCHITECTS ASSUME NO LIABILITY FOR ANY ERRORS OR OMISSIONS IN THIS DOCUMENT. THE ARCHITECTS' LIABILITY IS LIMITED TO THE DESIGN AND CONSTRUCTION OF THE PROJECT DESCRIBED IN THIS DOCUMENT. THE ARCHITECTS' LIABILITY DOES NOT EXTEND TO ANY OTHER PROJECTS OR TO ANY OTHER PARTY. THIS DOCUMENT IS THE PROPERTY OF WANNEMACHER JENSEN ARCHITECTS, INC. AND IS NOT TO BE REPRODUCED OR TRANSMITTED IN ANY FORM OR BY ANY MEANS, ELECTRONIC OR MECHANICAL, INCLUDING PHOTOCOPYING, RECORDING, OR BY ANY INFORMATION STORAGE AND RETRIEVAL SYSTEM, WITHOUT THE WRITTEN PERMISSION OF WANNEMACHER JENSEN ARCHITECTS, INC.

Project number
2322

DISTRIBUTION

MILESTONE	DATE
SD	06/29/23

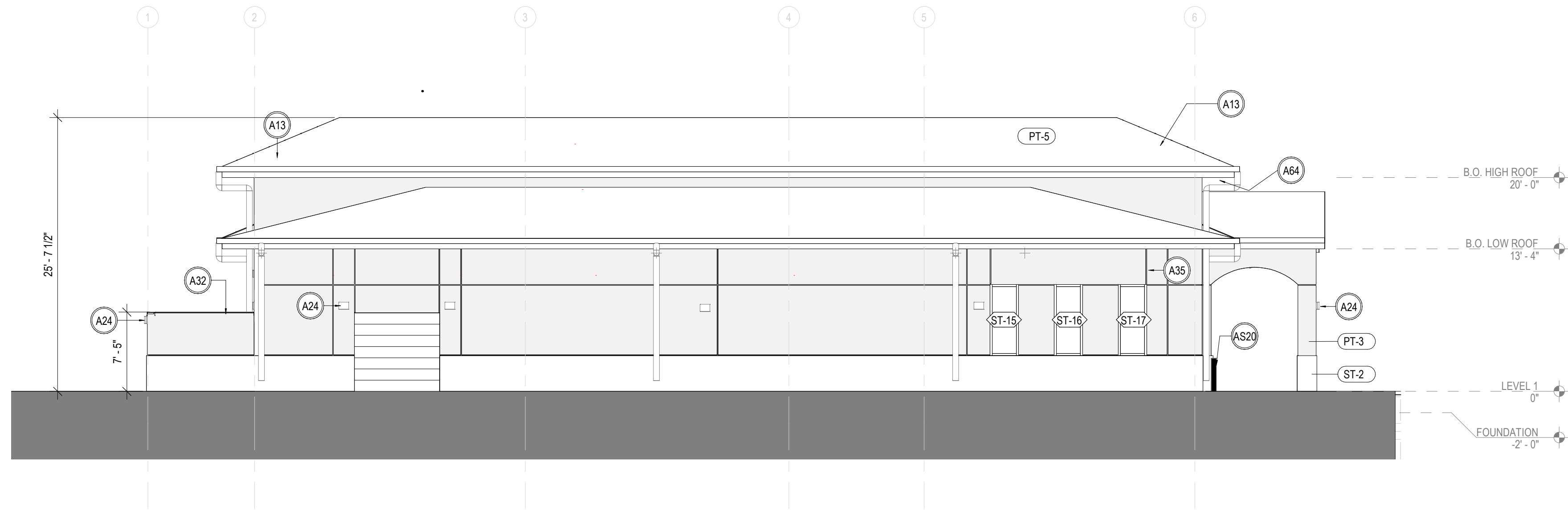
SPECIFIC KEYNOTE - ELEVATIONS	
Keynote Number	Keynote Text
A01	6" CONCRETE FILLED STEEL PIPE BOLLARD. REFER STRUCTURAL, CIVIL, AND SPECS
A09	CONTOURED SIGN OF FIRE STATION SEAL. ILLUMINATED FACE LIT CABINET. FACE TO BE POLYCARBONATE WITH DIGITALLY PRINTED TRANSLUCENT VINYL GRAPHIC OVERLAY. DELEGATED DESIGN. REFER TO ELECT DWGS FOR POWER REQUIREMENTS.
A13	STANDING SEAM METAL ROOF, COLOR TO MEET TABLE 9.2 OF CITYWIDE DESIGN STANDARDS
A17	OVERFLOW SCUPPER
A24	EXTERIOR LED SCONCE. REFER TO RCP FOR MOUNTING HEIGHT AND ELECTRICAL.
A26	MECHANICAL EQUIPMENT, REFER TO MECHANICAL
A27	PAINTED 5/8" STUCCO SYSTEM, COLOR. TBD
A30	HURRICANE RATED SECTIONAL DOOR, REFER TO DOOR SCHEDULE
A32	PREFINISHED SLOPED METAL COPING WITH DRIP EDGE, TYP. COLOR: TBD
A33	EXTERIOR ALUMINUM STOREFRONT GLAZING SYSTEM, MISSILE LEVEL E IMPACT RATED. REFER TO SPECIFICATIONS. REFER TO FPA FOR FRAMING REQUIREMENTS.
A35	1/2" PAINTED STUCCO CONTROL SLIP JOINT TO ALIGN WITH WALL REVEALS, NO LOCATION TO EXCEED 100SF OR GREATER THAN 15' APART. TYP. COLOR TBD BY OWNER.
A38	FOAMED-IN-PLACED INSULATED CMU BLOCK. REFER TO PARTITION TYPE. REFER TO SPECIFICATIONS
A51	PRIMARY SCUPPER AND DOWNSPOUT. COORDINATE WITH PLUMBING AND CIVIL
A54	BACKLIT POWDER COATED ALUMINUM SIGNAGE "FIRE STATION 20", DELEGATED DESIGN, COLOR TBD
A64	CONTINUOUS K-STYLE 6 INCH GUTTER SYSTEM
A76	EXTERIOR 7/8" PAINTED STUCCO SOFFIT SYSTEM
A101	RED AND GREEN INDICATOR LIGHT. REFER TO TECH AND ELEC.
A184	CONCRETE CURB. REFER TO STRUCTURAL
A258	GUTTER DOWNSPOUT 6" DIAMETER. COORDINATE WITH PLUMBING AND CIVIL



1 NORTH ELEVATION
1/8" = 1'-0"

FINISH LEGEND

- PT-3 DESCRIPTION: EXTERIOR PAINT ON STUCCO
COLOR: TBD
REMARKS: FASCIA TO MATCH
- ST-2 DESCRIPTION: LIMESTONE CLADDING
- PT-5 DESCRIPTION: COLOR FOR STANDING SEAM ROOF
COLOR: TBD



2 SOUTH ELEVATION
1/8" = 1'-0"

Wannemacher Jensen Architects, Inc.
132 Mirror Lake Drive N, Unit 301
St. Petersburg, Florida 33701-3214
(727) 822-5566
www.wjarc.com
AR94244
©Wannemacher Jensen Architects, Inc.

THIS DOCUMENT IS THE PROPERTY OF THE ARCHITECT. IT IS TO BE USED ONLY FOR THE PROJECT AND SITE SPECIFICALLY IDENTIFIED IN THESE DOCUMENTS. ANY REPRODUCTION, STORAGE, OR DISTRIBUTION OF THIS DOCUMENT WITHOUT THE WRITTEN CONSENT OF THE ARCHITECT IS PROHIBITED. THE ARCHITECT'S LIABILITY IS LIMITED BY THE PROFESSIONAL LIABILITY INSURANCE POLICY AND THE TERMS OF THE LOCAL ORDINANCE IN THE JURISDICTION WHERE THIS DOCUMENT IS USED.

ST. LUCIE FIRE STATION VILLAGE PARKWAY
ST. LUCIE COUNTY FIRE DISTRICT

Project number
2322

DISTRIBUTION

DATE	MILESTONE
06/29/23	SD

EXTERIOR ELEVATIONS

A-302