

# Accelerate and Redesign Port St. Lucie Blvd. -

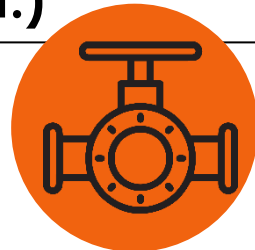
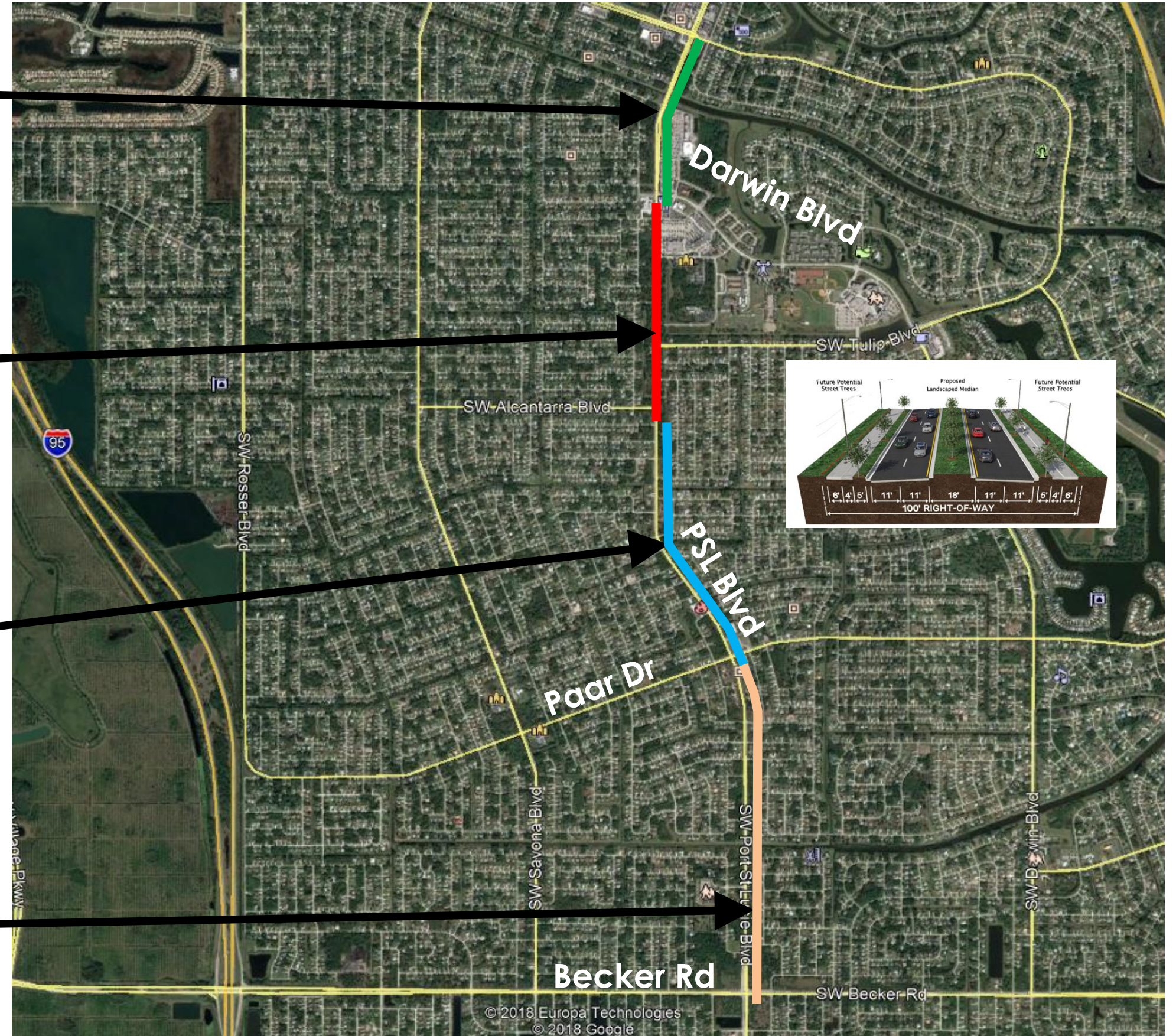
## South

Gatlin Blvd. to Darwin Blvd.  
Segment 3  
0.6 Mile  
Design – 100%  
Const - \$8.0M, (May 2021 - May 2022)

Darwin Blvd. to Alcantarra Blvd.  
Segment 2.1  
0.713 Mile  
Design – 100% plans by 3/31/2021  
Cons. - \$13.5M, (Dec 2021 - Dec 2023)

Alcantarra Blvd. to Paar Dr.  
Segment 2.2  
1.076 Mile  
Design – 100% Plans by 3/31/2021  
Const - \$16.4M, (Oct 2024 - Oct 2026)

Paar Dr. to Becker Rd.  
Segment 1  
1.119 Mile  
Design – May 2020 - 2024  
Const - \$15-20M est. (Oct 2026 – Oct 2028 est.)



# Plan Roadways for Future Needs