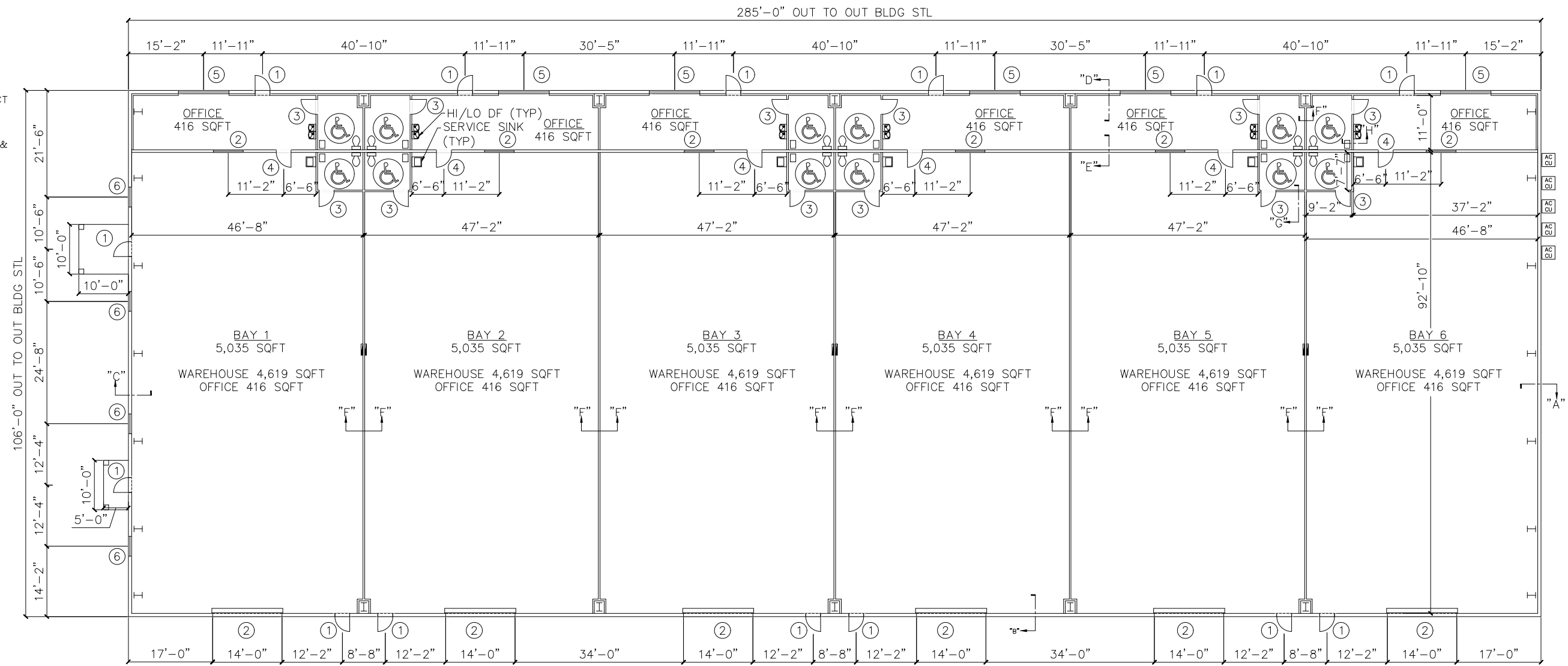


DOOR / WINDOW SCHEDULE

- 1 3/6" STOREFRONT IMPACT
- 2 14"14" ROLL UP
- 3 3/6" SC WD W/CLOSER & HC HDWRE/LOCK
- 4 3/6" SC WD
- 5 123" x 48" WINDOW
- 6 48" x 60" STOREFRONT WINDOW



TABULATIONS	
WAREHOUSE	27,714 SQFT
OFFICE	2,496 SQFT
TOTAL	30,210 SQFT

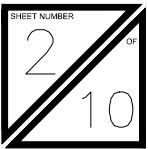
FLOOR PLAN

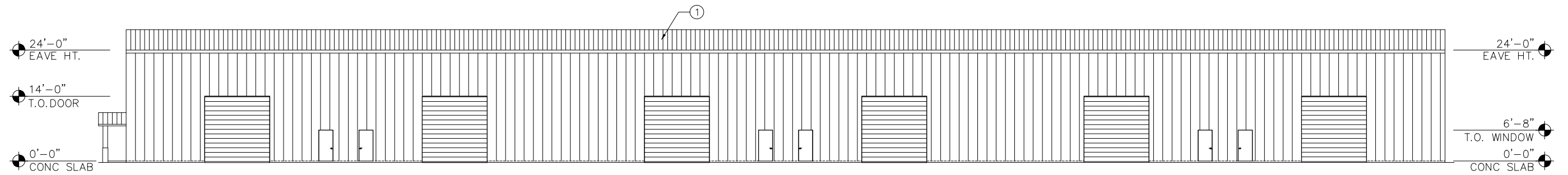
3/32" = 1'-0"

City of Port St. Lucie
Project No. P20-199

PAUL WELCH INC.
MECHANICAL ELECTRICAL CIVIL ENGINEERING
1984 S.W. BILTMORE ST. SUITE #114
PORT ST. LUCIE, FL 34984
PHONE (772) 785-9888 E-MAIL PWELCHINC@AOL.COM
PAUL WELCH, P.E. FLA REG NO. 29945

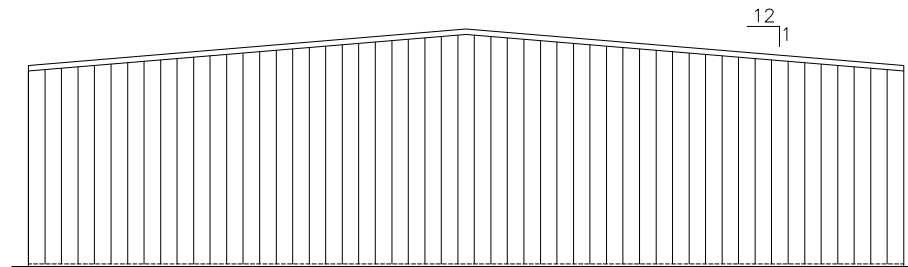
COMMERCE BLVD METAL BLDG
COMMERCE BLVD PORT ST. LUCIE, FL
DARRICK 772-209-2845





REAR ELEVATION

3/32" = 1'-0"

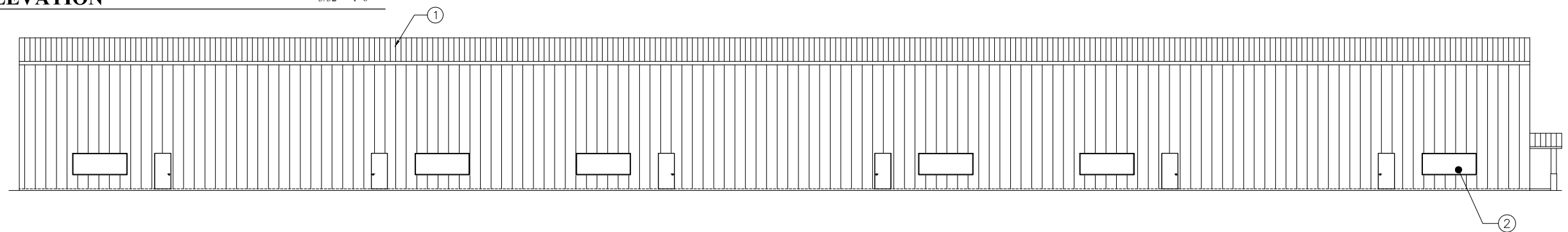


LEFT ELEVATION

3/32" = 1'-0"

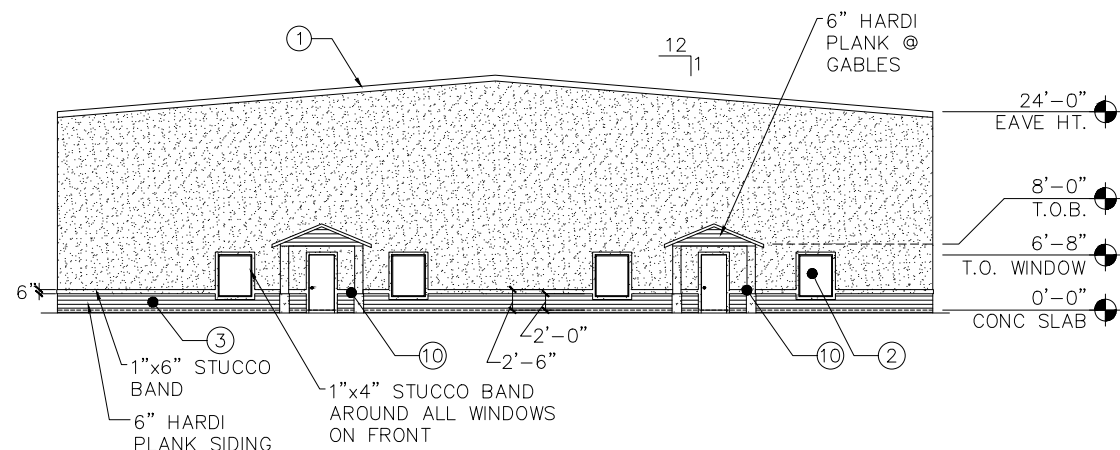
ARCHITECTURAL ELEMENTS

- ① STANDING SEAM METAL ROOF
- ② RECTANGULAR WINDOWS
- ③ HORIZONTAL STUCCO SIDING WITH HORIZONTAL GROOVE PATTERN BETWEEN 4" AND 12"
- ⑩ PORCH



FRONT ELEVATION

3/32" = 1'-0"



RIGHT ELEVATION

3/32" = 1'-0"

COMMERCE BLVD METAL BLDG
 COMMERCE BLVD PORT ST. LUCIE, FL
 DARRICK 772-209-2845

City of Port St. Lucie
 Project No. P20-199

PAUL WELCH INC.
 MECHANICAL ELECTRICAL CIVIL ENGINEERING
 1984 S.W. BILTMORE ST. SUITE #114
 PORT ST. LUCIE, FL 34984
 PHONE (772) 785-9888 E-MAIL PWELCHINC@AOL.COM
 PAUL WELCH, P.E. FLA REG NO. 29945

