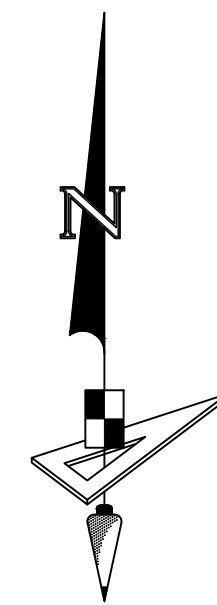


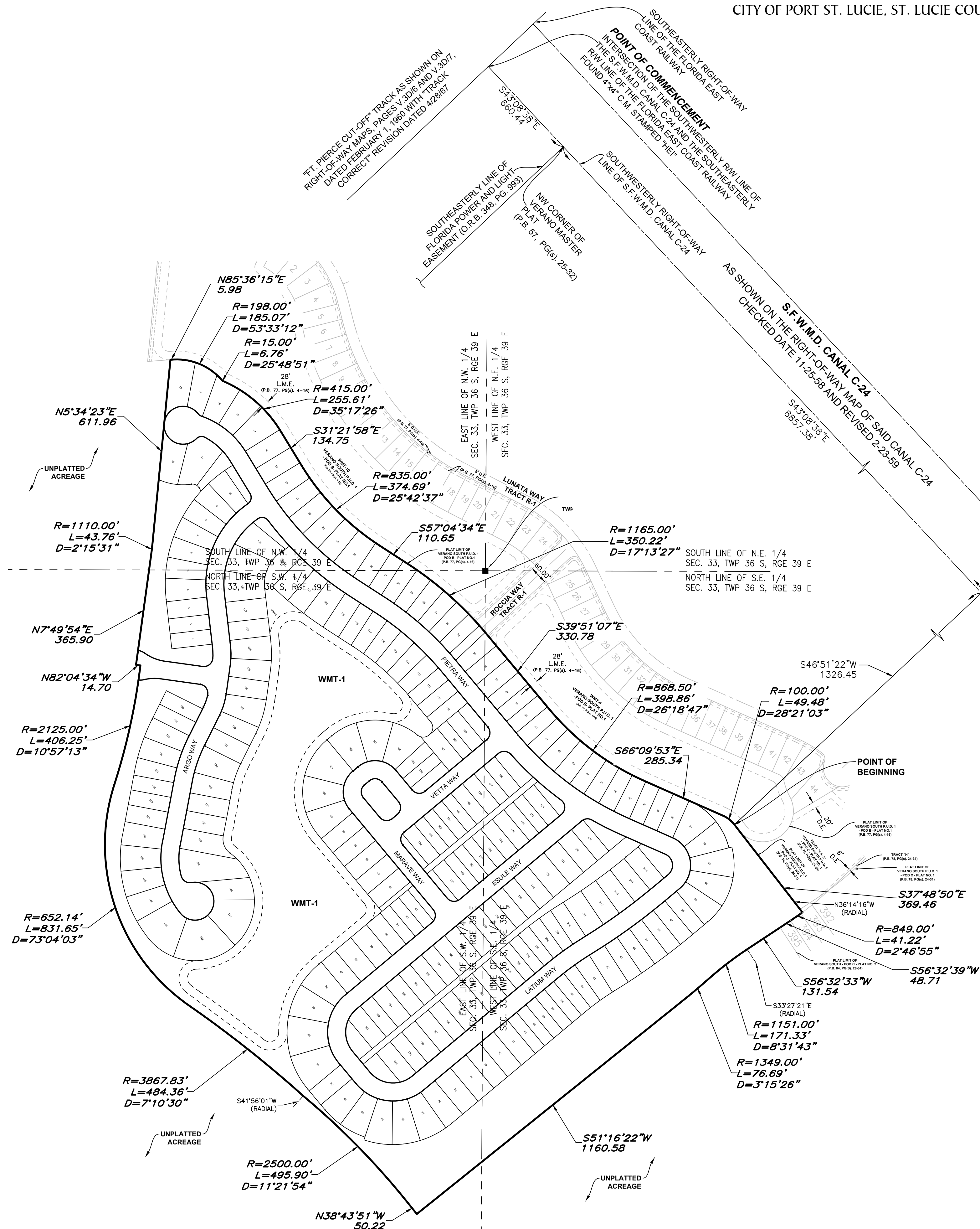
VERANO SOUTH P.U.D. I - POD E - PLAT NO. 2

BEING A PORTION OF SECTION 33, TOWNSHIP 36 SOUTH, RANGE 39 EAST,
CITY OF PORT ST. LUCIE, ST. LUCIE COUNTY, FLORIDA.

PLAT BOOK
PAGE
FILE NO.
DATE
TIME



400 200 0 200 400
SCALE: 1" = 200'



LEGEND

- P.B. ----- Plat Book
- Pg(s) ----- Page(s)
- S.F.W.M.D. ----- South Florida Water Management District
- A.E. ----- Access Easement
- C.U.E. ----- City Utility Easement
- D.E. ----- Drainage Easement
- E.A.E. ----- Emergency Access Easement
- L.M.E. ----- Lake Maintenance Easement
- U.E. ----- Utility Easement
- L.E. ----- Landscape Easement
- WMT ----- Stormwater Management Tract
- CL ----- Centerline
- R/W ----- Right-of-Way
- P.U.D. ----- Planned Unit Development
- R ----- Radius
- L ----- Arc Length
- D ----- Delta-Central Angle
- CB ----- Chord Bearing
- C ----- Chord Length
- (R) ----- Radial
- (NR) ----- Non-Radial
- C.M. ----- Concrete Monument
- LB ----- Licensed Business
- ----- Indicates (PRM) Permanent Reference Monument - 4"x4" Concrete Monument LB7768 (Unless Otherwise Noted)
- ----- Indicates (PCP) Permanent Control Point LB7768



4152 W. Blue Heron Blvd. Phone: (561) 444-2720
Suite 105 www.geopointsurveying.com
Riviera Beach, FL 33404 Licensed Business Number LB 7768

SHEET 3 OF 11 SHEETS

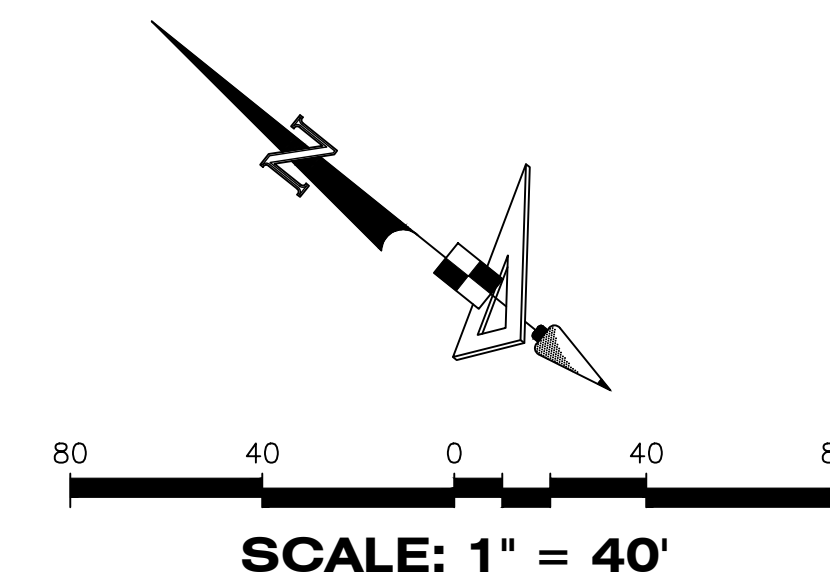
PSLUSD #11-652-34B

CITY OF PORT ST. LUCIE PROJECT NO. (P21-154)

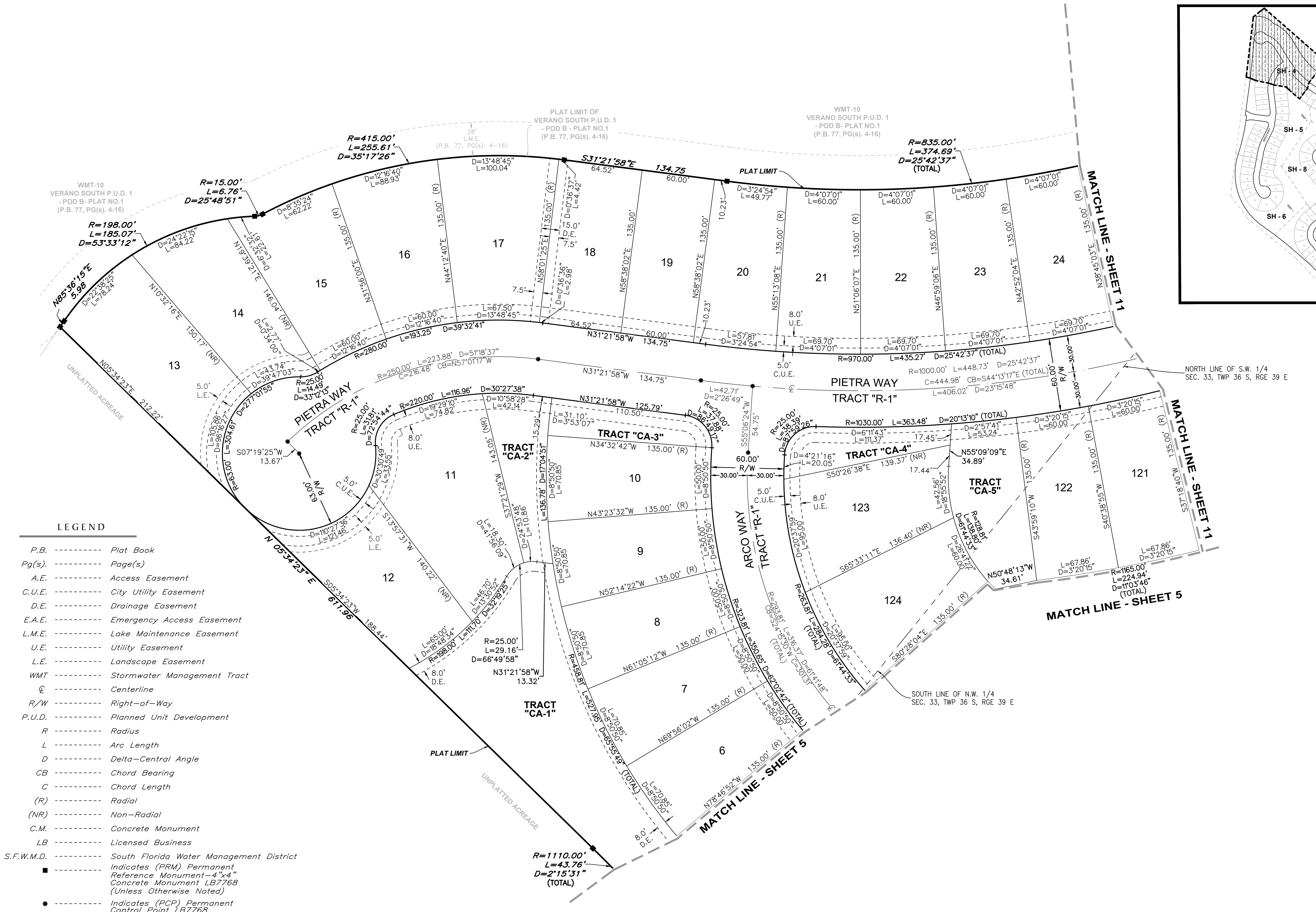
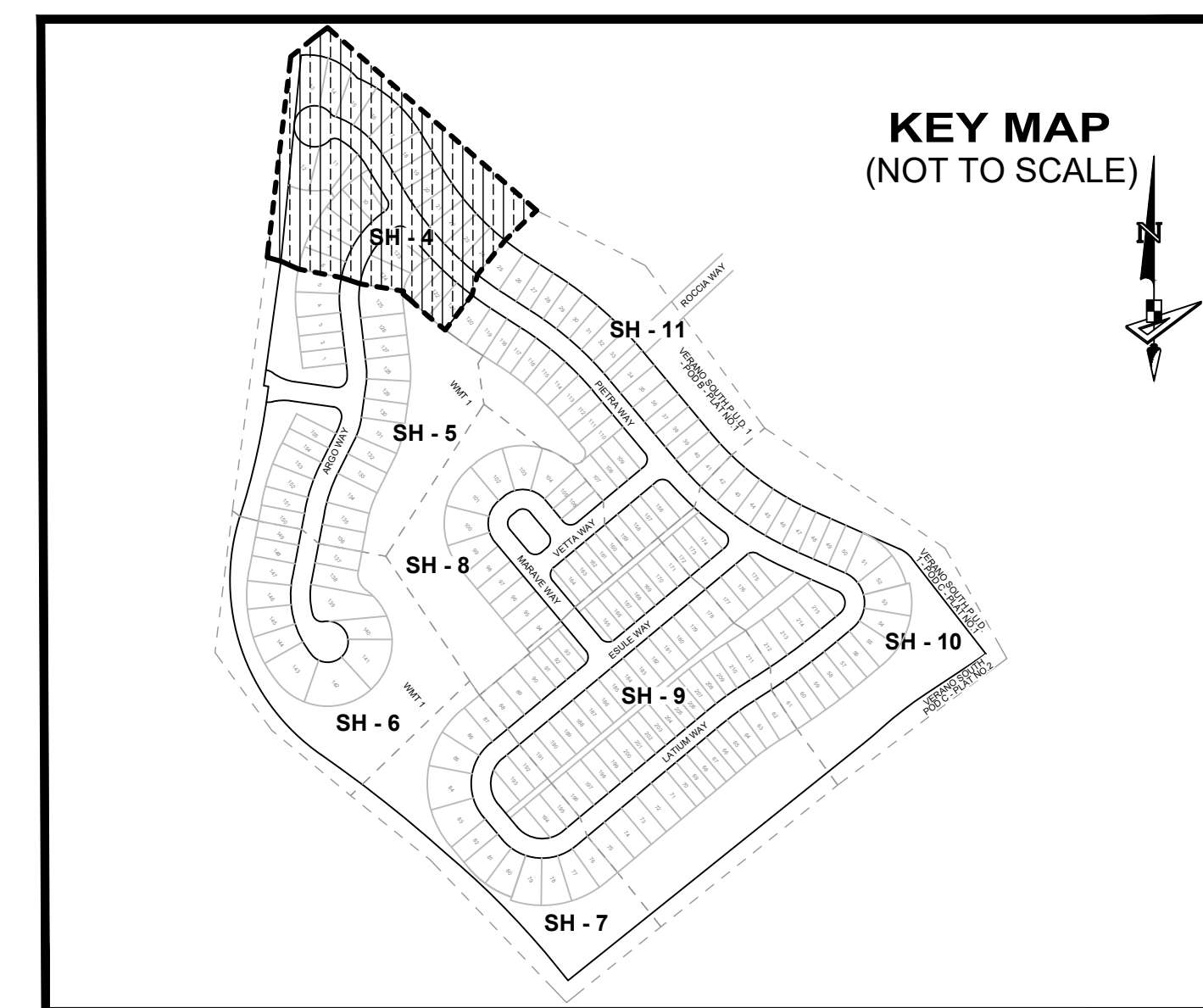
DRAWN BY: WATER/PLATTING/VERANO SOUTH P.U.D. I - POD E - PLAT NO. 2; PLOTTED BY: DEBENIS/SCHILL; ON: 02/26/2021 10:44 AM; LAST SAVED BY: DEBENIS/SCHILL; ON: 02/26/2021 10:43 AM

VERANO SOUTH P.U.D. 1 - POD E - PLAT NO. 2

BEING A PORTION OF SECTION 33, TOWNSHIP 36 SOUTH, RANGE 39 EAST,
CITY OF PORT ST. LUCIE, ST. LUCIE COUNTY, FLORIDA.



PLAT BOOK
PAGE
FILE NO.
DATE
TIME



- LEGEND**
- P.B. ----- Plat Book
 - Pg(s). ----- Page(s)
 - A.E. ----- Access Easement
 - C.U.E. ----- City Utility Easement
 - D.E. ----- Drainage Easement
 - E.A.E. ----- Emergency Access Easement
 - L.M.E. ----- Lake Maintenance Easement
 - U.E. ----- Utility Easement
 - L.E. ----- Landscape Easement
 - WMT ----- Stormwater Management Tract
 - ⊙ ----- Centerline
 - R/W ----- Right-of-Way
 - P.U.D. ----- Planned Unit Development
 - R ----- Radius
 - L ----- Arc Length
 - D ----- Delta-Central Angle
 - CB ----- Chord Bearing
 - C ----- Chord Length
 - (R) ----- Radial
 - (NR) ----- Non-Radial
 - C.M. ----- Concrete Monument
 - LB ----- Licensed Business
 - S.F.W.M.D. ----- South Florida Water Management District
 - ----- Indicates (PRM) Permanent Reference Monument—4"x4" Concrete Monument LB7768 (Unless Otherwise Noted)
 - ----- Indicates (PCP) Permanent Control Point LB7768

GeoPoint
Surveying, Inc.

4152 W. Blue Heron Blvd. Suite 105
Riviera Beach, FL 33404

Phone: (561) 444-2720
www.geopointsurvey.com
Licensed Business Number LB 7768

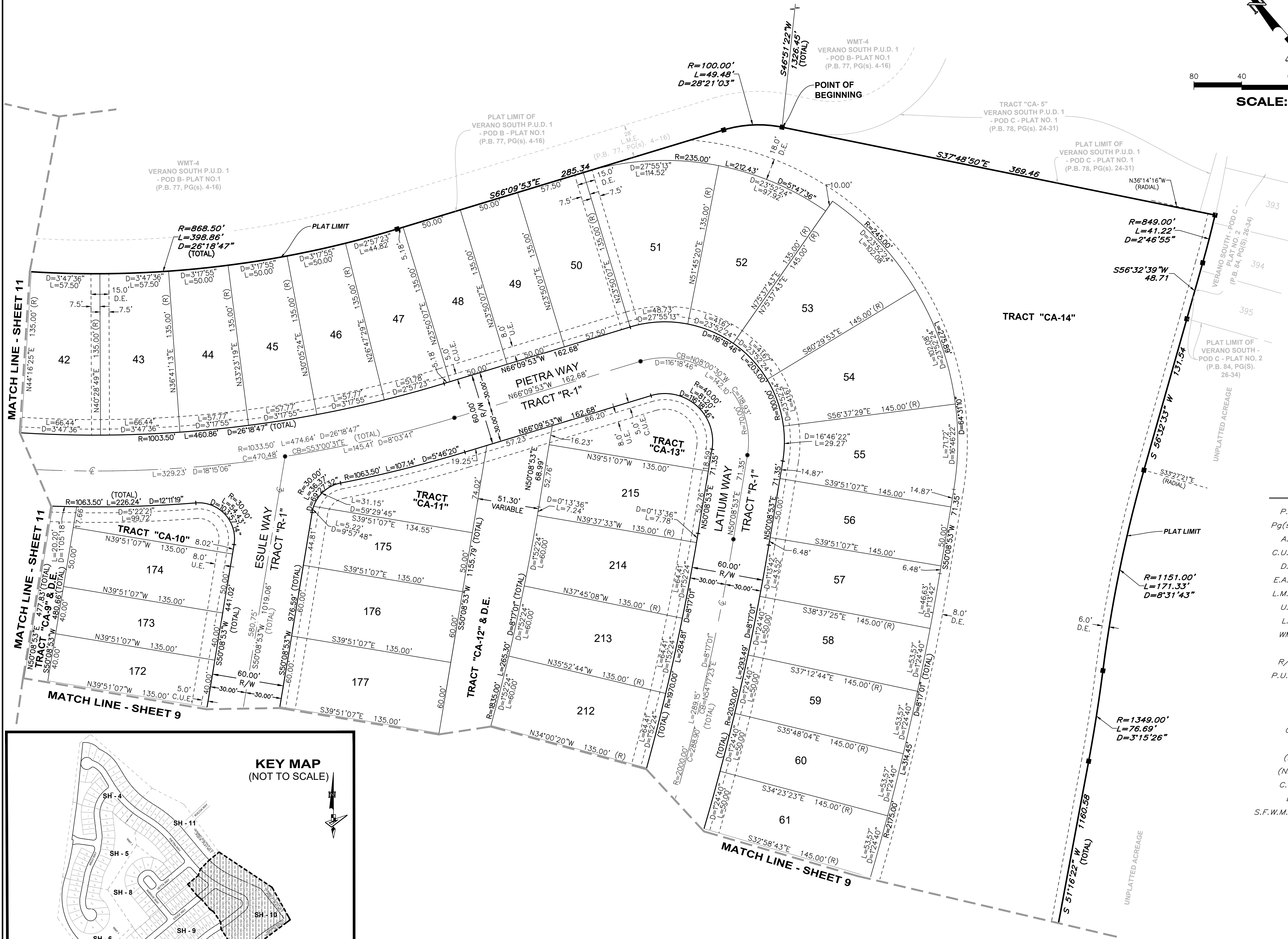
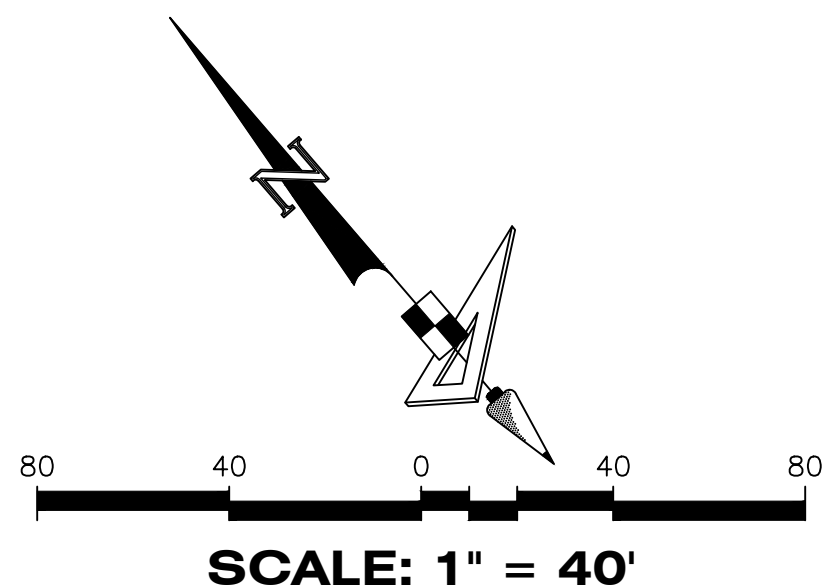
SHEET 4 OF 11 SHEETS

DRAWN BY: WATERLOO/PAT/VERANO SOUTH POD E - PLAT 2 - PLAT.MXD PLOTTED BY: DENNIS SCHULZ ON: 12/20/2021 10:44 AM LAST SAVED BY: DENNIS SCHULZ ON: 12/20/2021 10:43 AM

VERANO SOUTH P.U.D. 1 - POD E - PLAT NO. 2

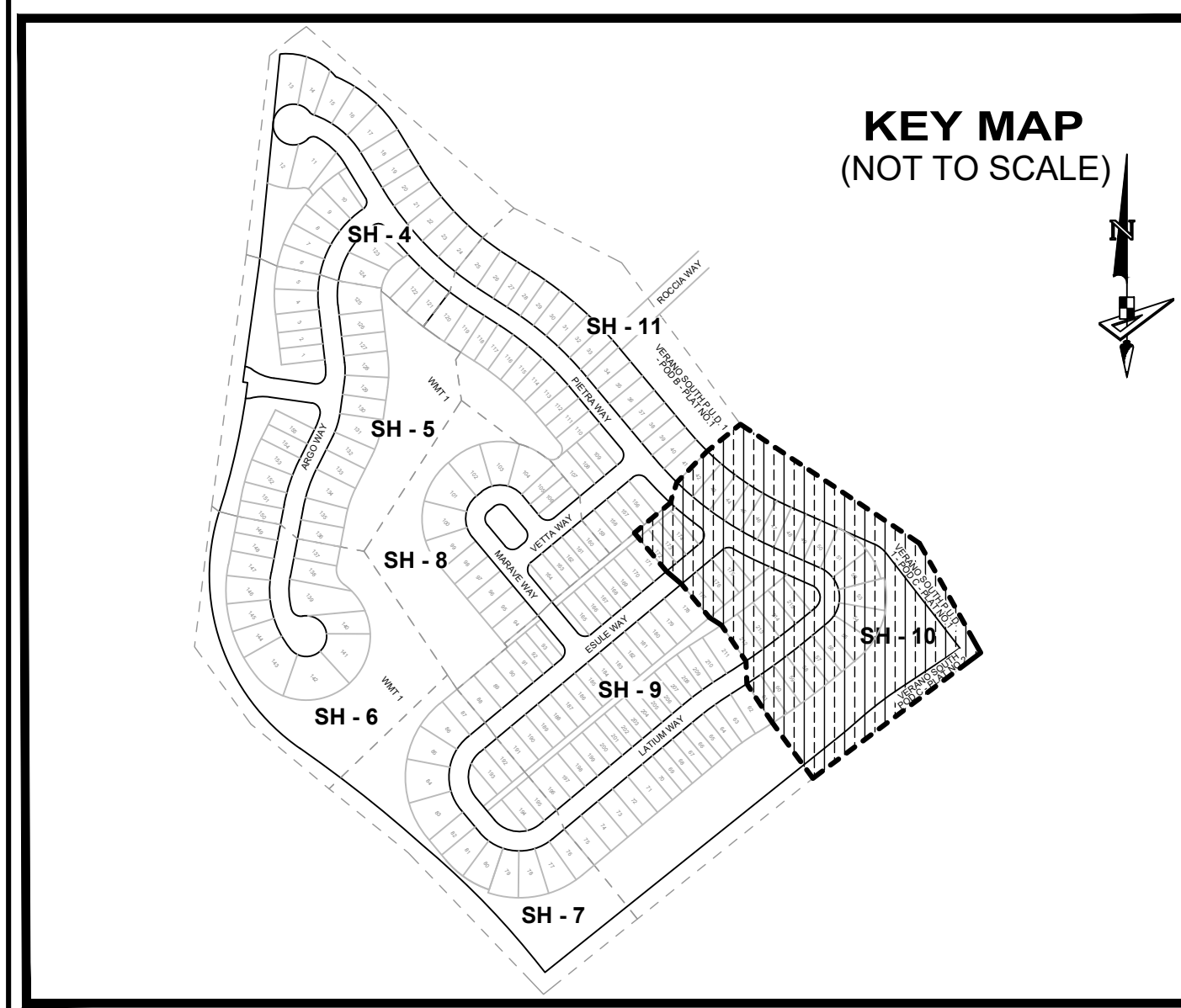
BEING A PORTION OF SECTION 33, TOWNSHIP 36 SOUTH, RANGE 39 EAST,
CITY OF PORT ST. LUCIE, ST. LUCIE COUNTY, FLORIDA.

PLAT BOOK
PAGE
FILE NO.
DATE
TIME



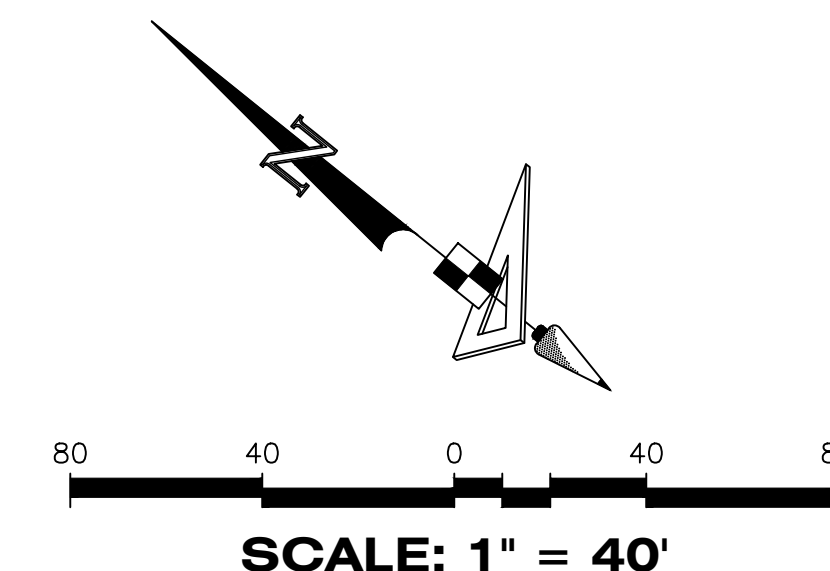
LEGEND

- P.B. ----- Plat Book
- Pg(s) ----- Page(s)
- A.E. ----- Access Easement
- C.U.E. ----- City Utility Easement
- D.E. ----- Drainage Easement
- E.A.E. ----- Emergency Access Easement
- L.M.E. ----- Lake Maintenance Easement
- U.E. ----- Utility Easement
- L.E. ----- Landscape Easement
- WMT ----- Stormwater Management Tract
- @ ----- Centerline
- R/W ----- Right-of-Way
- P.U.D. ----- Planned Unit Development
- R ----- Radius
- L ----- Arc Length
- D ----- Delta-Central Angle
- CB ----- Chord Bearing
- C ----- Chord Length
- (R) ----- Radial
- (NR) ----- Non-Radial
- C.M. ----- Concrete Monument
- LB ----- Licensed Business
- S.F.W.M.D. ----- South Florida Water Management District
- ----- Indicates (PRM) Permanent Reference Monument-4"x4" Concrete Monument LB7768 (Unless Otherwise Noted)
- ----- Indicates (PCP) Permanent Control Point LB7768

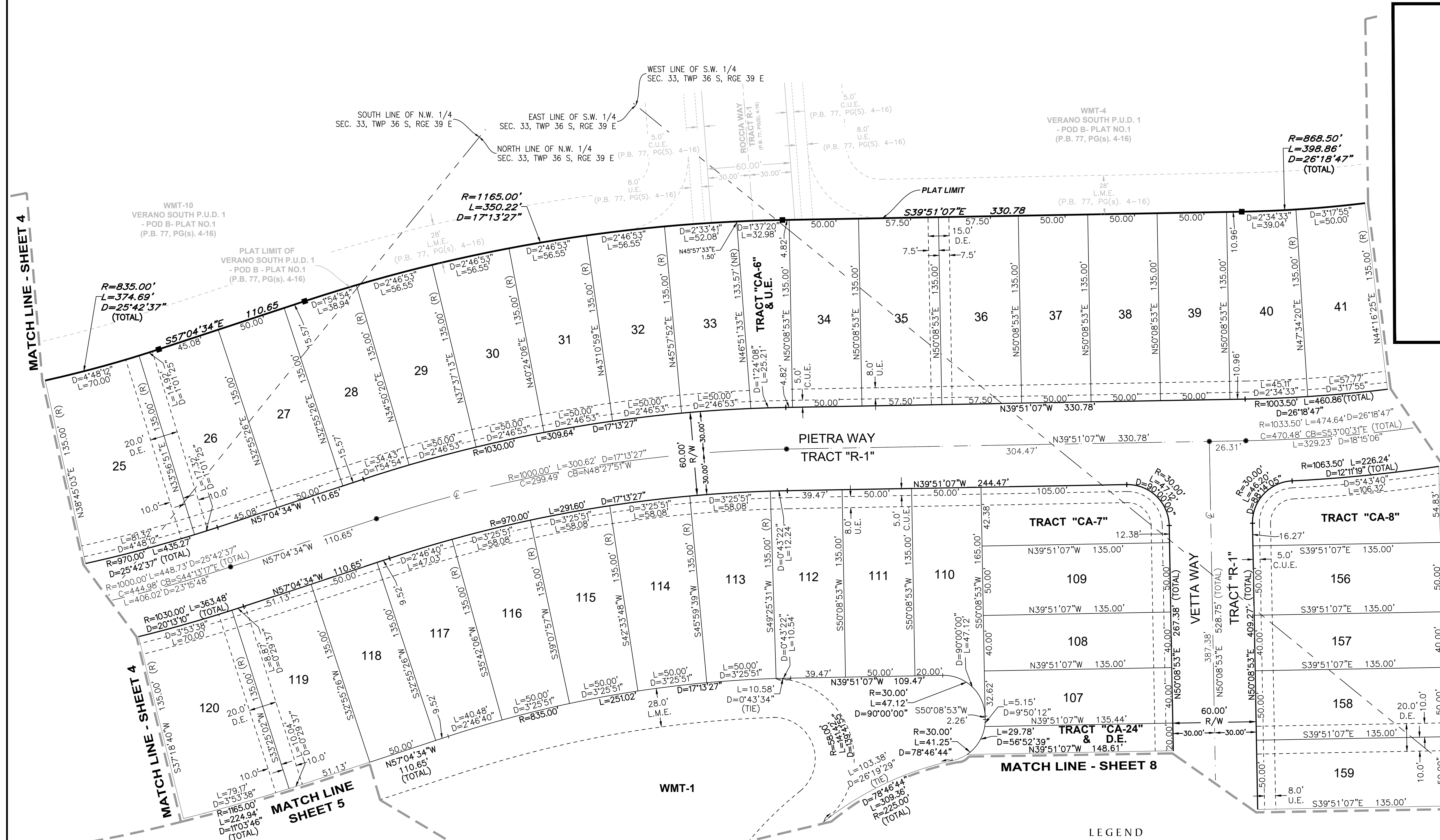
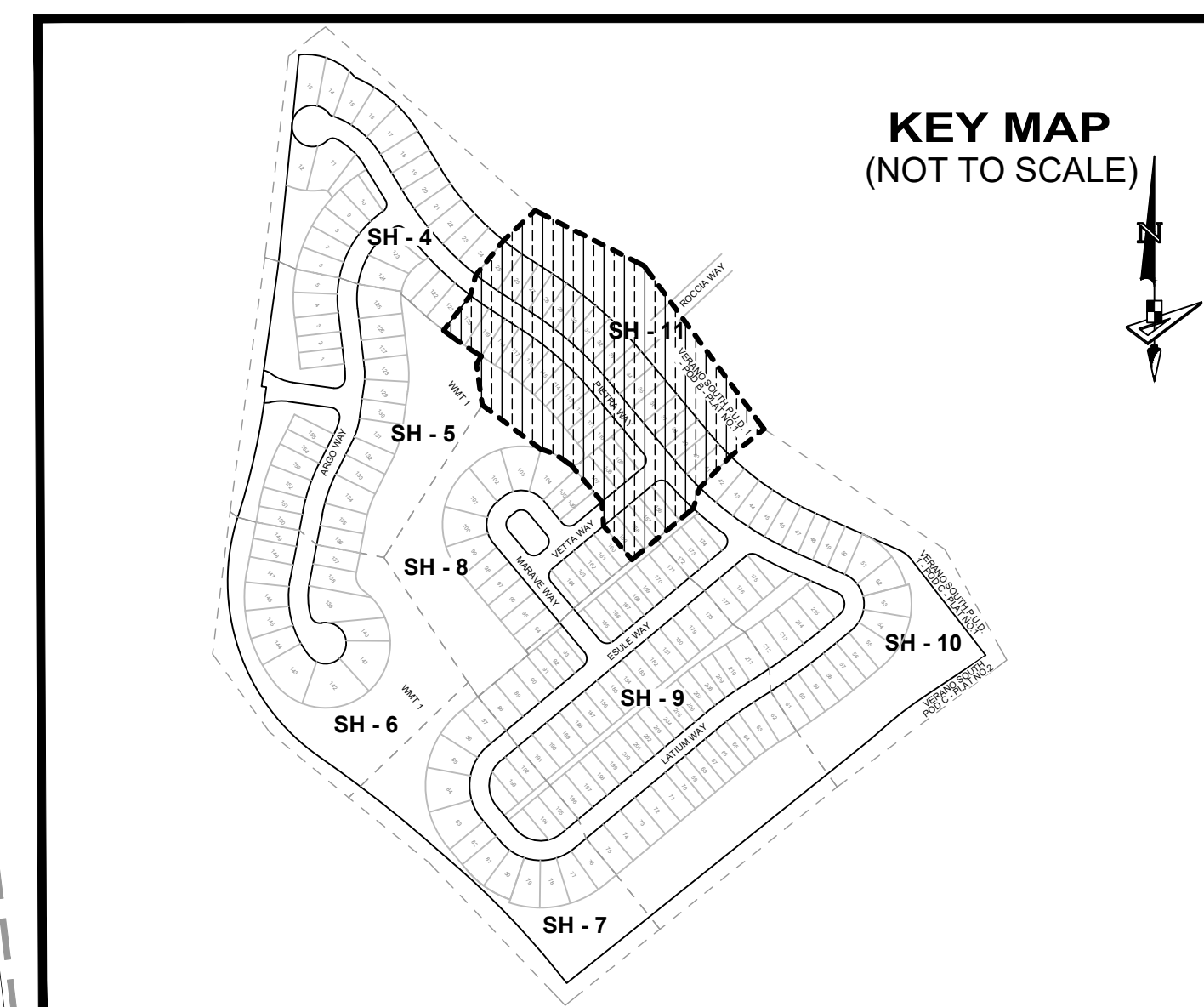


VERANO SOUTH P.U.D. 1 - POD E - PLAT NO. 2

BEING A PORTION OF SECTION 33, TOWNSHIP 36 SOUTH, RANGE 39 EAST,
CITY OF PORT ST. LUCIE, ST. LUCIE COUNTY, FLORIDA.



PLAT BOOK
PAGE
FILE NO.
DATE
TIME



MATCH LINE - SHEET 4

MATCH LINE - SHEET 4

MATCH LINE SHEET 5

MATCH LINE - SHEET 8

LEGEND

P.B. Plat Book	P.U.D. Planned Unit Development
Pg(s) Page(s)	R Radius
S.F.W.M.D. South Florida Water Management District	L Arc Length
A.E. Access Easement	D Delta-Central Angle
C.U.E. City Utility Easement	CB Chord Bearing
D.E. Drainage Easement	C Chord Length
E.A.E. Emergency Access Easement	(R) Radial
L.M.E. Lake Maintenance Easement	(NR) Non-Radial
U.E. Utility Easement	C.M. Concrete Monument
L.E. Landscape Easement	LB Licensed Business
WMT Stormwater Management Tract	■ Indicates (PRM) Permanent Reference Monument-4"x4" Concrete Monument LB7768 (Unless Otherwise Noted)
⊕ Centerline	● Indicates (PCP) Permanent Control Point LB7768
R/W Right-of-Way	

GeoPoint
Surveying, Inc.

4152 W. Blue Heron Blvd. Suite 105
Riviera Beach, FL 33404

Phone: (561) 444-2720
www.geopointsurveying.com
Licensed Business Number LB 7768

SHEET 11 OF 11 SHEETS

DRAWN BY: WALTER PATRICK VERANO SOUTH P.U.D. 1 - POD E - PLAT NO. 2 - SHEET 11 OF 11 SHEETS. PLOTTED BY: DENNIS SCHILL. ON: 12/20/23 10:46 AM. LAST SAVED BY: DENNIS SCHILL. ON: 12/20/23 10:43 AM.