

Plant Specifications

SPECIES AND SIZE shall conform to those indicated on the drawings. Nomenclature shall conform to STANDARDIZED PLANT NAMES, current edition. All nursery stock shall be in accordance with Florida Grades and Standards for Nursery Plants, latest edition published by the Florida Department of Agriculture and Consumer Services. All plants not otherwise specified as being Florida Fancy or Specimen shall be Florida Grade Number 1 or better as determined by the Florida Division of Plant Industry. Specimen means an exceptionally heavy, symmetrical, tightly knit plant, so trained or favored in its development that first appearance is unquestionable and outstandingly superior in form, number of branches, compactness and symmetry.

GENERAL REQUIREMENTS

All plants shall be freshly dug, sound, healthy, vigorous, well branched, and free of disease and insect eggs and larvae, and shall have adequate root systems. Trees for planting rows shall be uniform in size and shape. All materials shall be subject to approval by the Landscape Architect. Where any requirements are omitted from the plant list, the plants furnished shall be normal for the variety. Plants shall be pruned prior to delivery only upon the approval of the Landscape Architect.

CONTAINER GROWN STOCK

All container grown material shall be healthy, vigorous, well rooted plants, and established in the container in which they are sold. The plants shall have tops which are good quality and in a healthy growing condition. An established container grown plant shall be grown in that container sufficiently long enough for the new fibrous roots to have developed so that the root mass will retain its shape and hold together when removed from the container. Plant root bound in containers are unacceptable.

MEASUREMENTS

Trees: Height shall be measured from ground to the top most portion of the tree. Small, multi-trunked trees are measured to the top of main body of the crown. Spread shall be measured to the end of branching equally around the crown from the center of the trunk. Measurements are not to include any terminal growth. Single trunk trees shall be free of "V" crotches that could be points of weak limb structure or disease infestation.

Shrubs: Heights shall be measured from the ground to the average points where mature plant growth stops. Spread shall be measured to the end of branching equally around the shrub mass. Measurements are not to include any terminal growth.

Palms: Clear Trunk (C.T.) shall be measured from the ground at the time of installation to the point where the mature aged trunk joins the immature or green portion of the trunk or the head.

Overall height (O.H.) shall be measured from the ground at the time of installation to a point three quarters the length of the unopened bud. Palms with marred or burned trunks will not be accepted.

SOIL

Planting soil for use in preparing backfill for plant pits shall be free from heavy clay, stones, lime plants, roots or other foreign materials or noxious grasses (such as Bermuda or nut grass) and noxious weeds. It shall not contain toxic substances which may be harmful to plant growth.

COMMERCIAL FERTILIZER

Two fertilizer shall be used in all types of plantings, except palms. Granular fertilizer shall be uniform in composition, dry, and free flowing. This fertilizer shall be delivered to the site in the original unopened bags, each bearing the manufacturer's statement of analysis, and shall meet the following requirements: sixteen (16%) percent nitrogen, seven (7%) percent phosphorus, twelve (12%) percent potassium, plus iron. Tablet fertilizer ("Agriform" or equal) in 21 gram size shall meet the following requirements: twenty (20%) percent nitrogen, ten (10%) percent phosphorus, five (5%) percent potassium.

The two fertilizers will be applied at the following rates:

PLANT SIZE	16-7-12	"AGRIFORM" TABLET (21 Grams)
1 gal.	1/4 lb.	1
3 gal.	1/3 lb.	2
7-15 gal.	1/2 lb.	4
1"-6" caliper	2 lbs/1" caliper	2/1" caliper
6" and larger	3 lbs/1" caliper	2/1" caliper

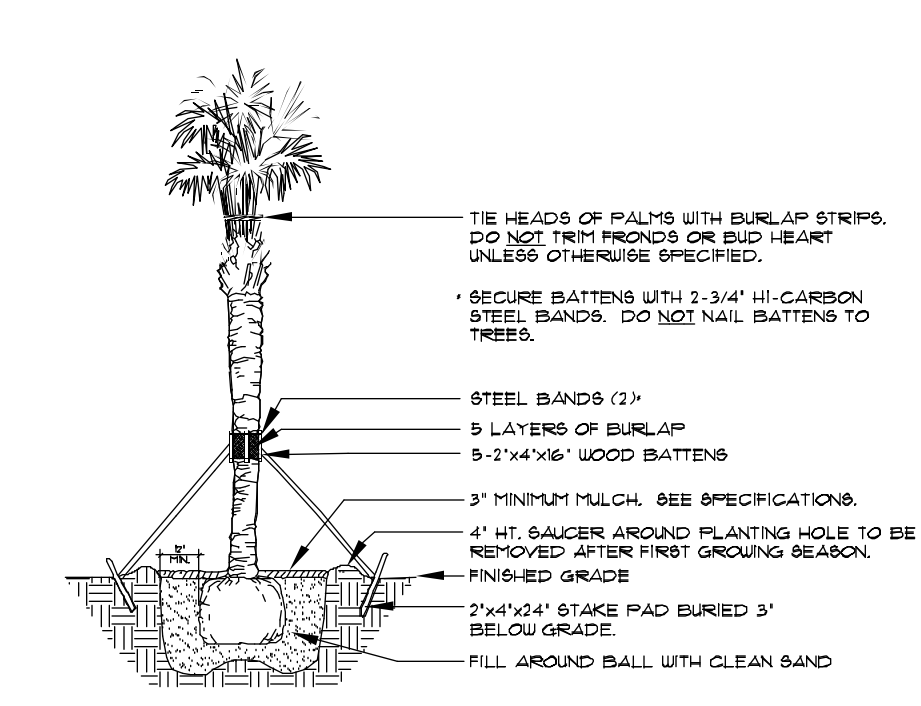
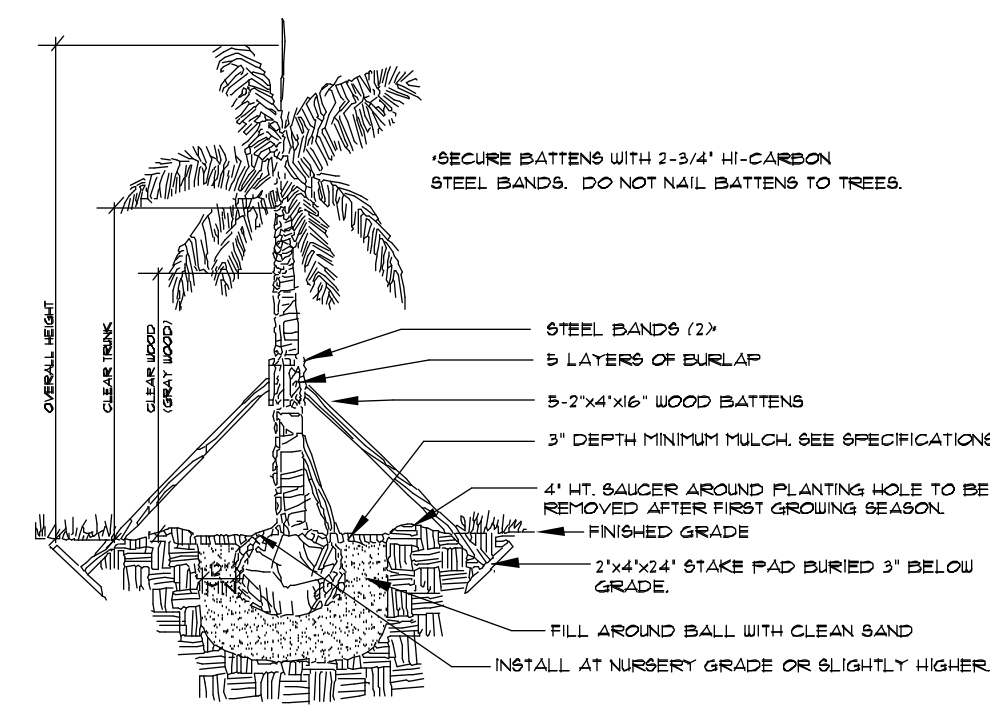
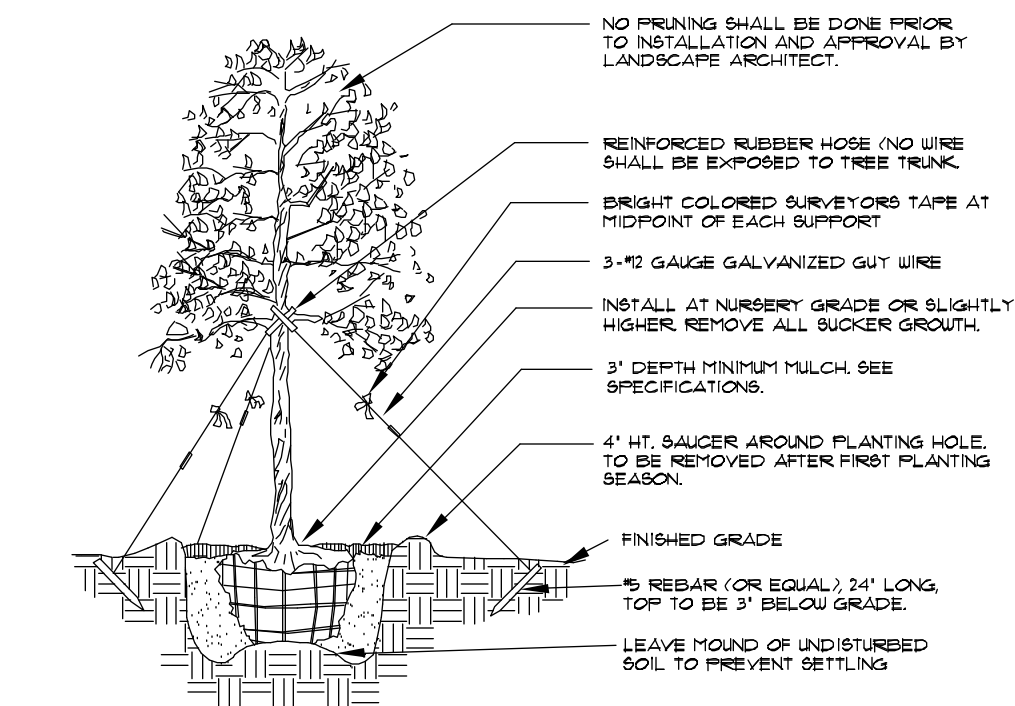
"Florida East Coast Palm Special" will be applied to all palms at installation at a rate of 1/2 lb. per inch of trunk caliper unless otherwise specified.

MULCH

Mulch material shall be two (2) inches of shredded Class 'A' mulch (sterilized and free of seeds), moistened at the time of application to prevent wind displacement. See plant list for specification.

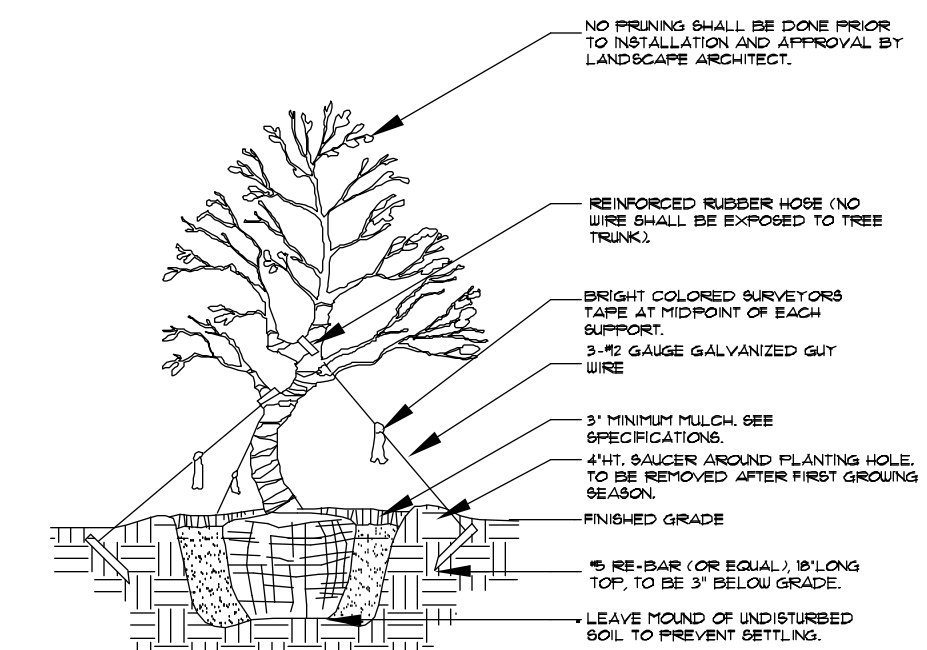
SUBSTITUTIONS

No substitutions of plant material types or size will be allowed without written consent of the Landscape Architect. B&B material will not be accepted as substitute for container grown material unless previously approved. Alternate substitutions shall be indicated in bid.



Tree Planting

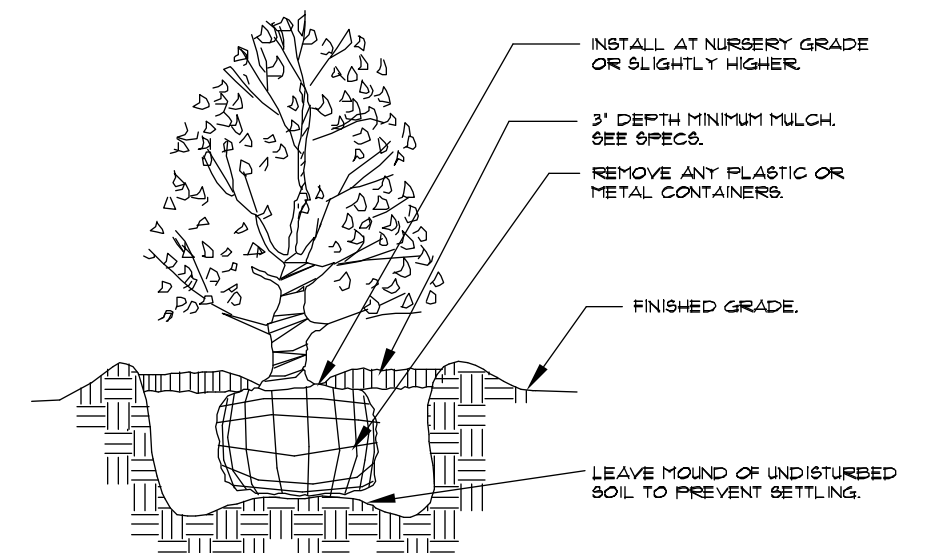
* SEE SPECIFICATIONS FOR BACKFILL MIXTURE AND FERTILIZATION.
* BRACING - SPECIAL SITE CONDITIONS MAY REQUIRE MODIFICATION TO BRACING TECHNIQUE. LANDSCAPE CONTRACTOR WILL ADEQUATELY BRACE (OR WIRE) ALL TREES TO PREVENT EXCESSIVE MOVEMENT & MAINTAIN A VERTICAL POSITION.



Palm Planting

APPLIES TO: ROYAL PALMS, QUEEN PALMS, ALEXANDER PALMS, FOXTAIL PALMS.

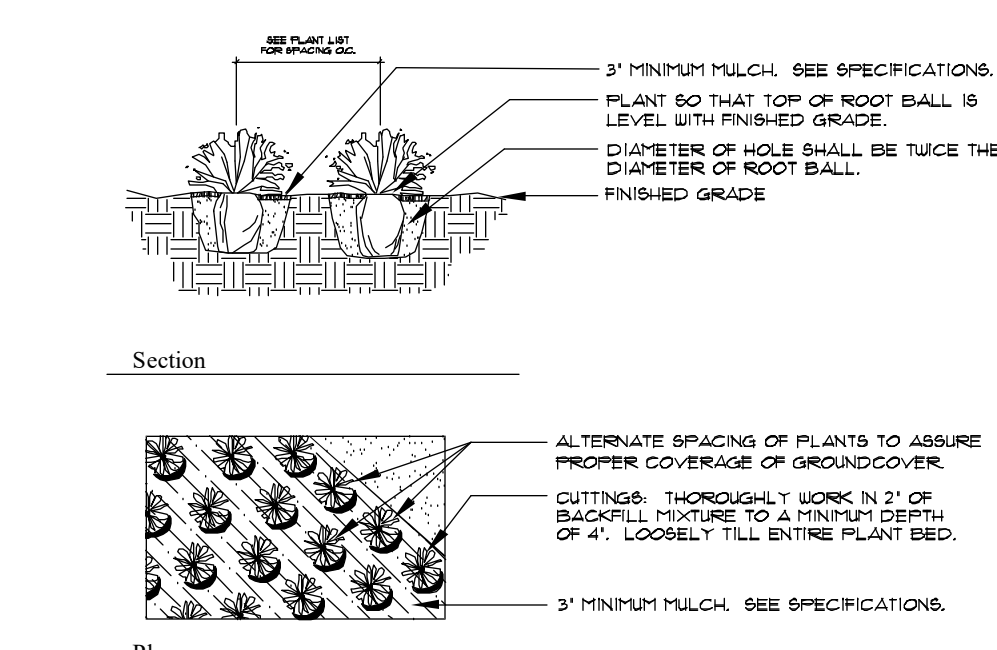
* SEE SPECIFICATIONS FOR BACKFILL MIXTURE AND FERTILIZATION.
* BRACING - SPECIAL SITE CONDITIONS MAY REQUIRE MODIFICATION TO BRACING TECHNIQUE. LANDSCAPE CONTRACTOR WILL ADEQUATELY BRACE (OR WIRE) ALL TREES TO PREVENT EXCESSIVE MOVEMENT & MAINTAIN A VERTICAL POSITION.



Palm Planting

APPLIES TO: BABAL PALMS, WASHINGTON PALMS, CANARY ISLAND DATE PALMS, SENEGAL DATE PALMS.

* SEE SPECIFICATIONS FOR BACKFILL MIXTURE AND FERTILIZATION.



Irregular & Multi-Stem Tree Planting

FOR TREES 6"-14" HT.
NOTES:
* SEE SPECIFICATIONS FOR BACKFILL MIXTURE AND FERTILIZATION.
* BRACING - SPECIAL SITE CONDITIONS MAY REQUIRE MODIFICATION TO BRACING TECHNIQUE. LANDSCAPE CONTRACTOR WILL ADEQUATELY BRACE (OR WIRE) ALL TREES TO PREVENT EXCESSIVE MOVEMENT & MAINTAIN A VERTICAL POSITION.

Shrub Planting

* SEE SPECIFICATIONS FOR BACKFILL MIXTURE AND FERTILIZATION.

Groundcover Planting

* SEE SPECIFICATIONS FOR BACKFILL MIXTURE AND FERTILIZATION.



LOCATION MAP

N.T.S.

SEC. 21 TWP. 37S RGE. 39E

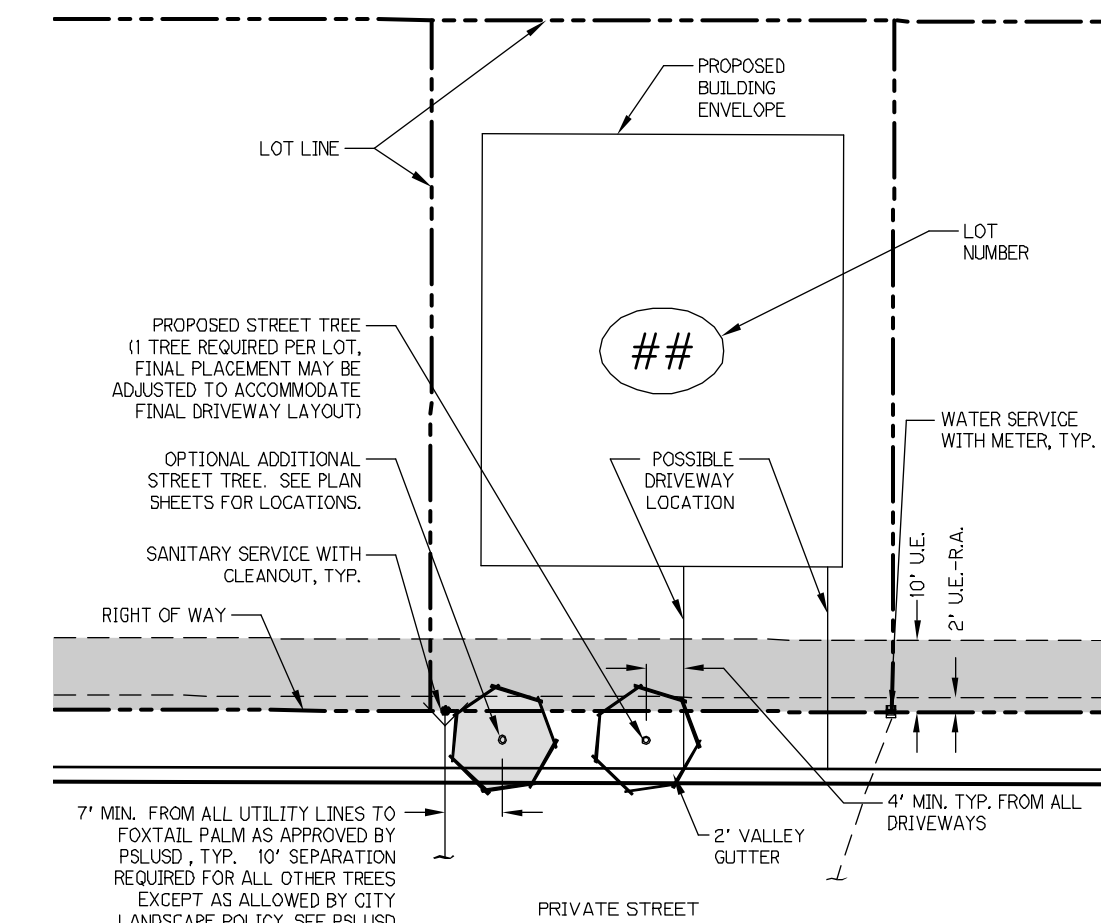
Sheet Index

P2-1 - Cover Sheet, Index, General Notes

P2-2 thru P2-10 Plat Two Planting Plans

Symbols Legend

D.E.	DRAINAGE EASEMENT	O.E.	OVERHANG EASEMENT
L.M.E.	LAKE MAINTENANCE EASEMENT	G.E.	GRADING EASEMENT
L.M.A.E.	LAKE MAINTENANCE ACCESS EASEMENT	PSL	PORT ST LUCIE
R.O.W.	RIGHT OF WAY	L.E.	LANDSCAPE EASEMENT
U.E.	UTILITY EASEMENT	D.S.E.	DRAINAGE SWALE EASEMENT
U.E.-R.A.	UTILITY EASEMENT - RESTRICTED AREA (SEE "U.E." PLAT DEDICATION)	O.S.	OPEN SPACE
STIM	STORM SEWER LINE WITH MAN-HOLE	S&M	SEED & MULCH SIGN
STIM	STORM SEWER LINE WITH CATCH BASIN	1	LOT NUMBER
SAN	SANITARY SEWER LINE WITH MAN-HOLE	1	FIRE HYDRANT
WM	WATER MAIN		
	WATER SVC. TO LOT WITH METER W.M.		
	SANITARY SVC. TO LOT WITH CLEANOUT C.O.		



Typical Lot Layout Detail

PSLUD Notes:

LANDSCAPE PLANS SHALL BE SUBMITTED FOR THE PROJECT INDICATING THE LOCATION OF LANDSCAPE AREAS, PERIMETER WALLS, FOUNDATIONS, BENCHES, TREE WELLS, FENCES, GATES, SIGNS, DECORATIVE ROCKS, SCULPTURE, FOUNTAINS, AND ANY OTHER FEATURES THAT MAY INFLUENCE THE LOCATION OF WATER / WASTEWATER / RECLAIMED WATER FACILITIES. ALSO EXISTING AND PROPOSED WATER / WASTEWATER / RECLAIMED FACILITIES, AND RIGHT-OF-WAY, LOT LINES AND EASEMENTS. THE PLANS SHALL INCLUDE AND CONFORM TO THE FOLLOWING STANDARD NOTES:

1. NO LANDSCAPING SHALL BE PLANTED IN A MANNER THAT WOULD ADVERSELY AFFECT UTILITY EASEMENTS. LANDSCAPING SHALL BE IN COMPLIANCE WITH CHAPTER 84 OF THE CITY OF PORT ST. LUCIE CODE OF ORDINANCES; PSLUD TECHNICAL SPECIFICATIONS AND POLICIES.

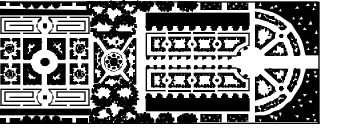
2. ALL LANDSCAPING WITHIN CITY UTILITY EASEMENTS SHALL COMPLY WITH CHAPTER 84 OF THE CITY'S CODE OF ORDINANCES AND PSLUD TECHNICAL SPECIFICATIONS, POLICIES, AND CODES.

3. ALL LANDSCAPING SHALL MEET THE LATEST PSLUD LANDSCAPE POLICY AND SHALL NOT BE PLACED IN A MANNER THAT WOULD CREATE CONFLICTS WITH THE INTENDED OPERATION AND MAINTENANCE OF ANY EXISTING UTILITY.

4. WITH THE EXCEPTION OF FOXTAIL PALMS, TREES SHALL NOT BE PLANTED WITHIN 10' OF ANY PSLUD INFRASTRUCTURE. AS SPECIFICALLY APPROVED BY THE PSLUD, FOXTAIL PALMS MAY BE A DISTANCE NOT LESS THAN SEVEN (7) FEET OF ANY PSLUD INFRASTRUCTURE. ALL REQUIREMENTS ARE FROM OUTSIDE TO OUTSIDE, NOT CENTERLINE TO CENTERLINE. EXAMPLE: OUTSIDE OF PIPE TO NEAREST POINT ON TREE TRUNK.

5. NO LANDSCAPING OTHER THAN SOFT GRASSES SHALL BE LOCATED WITHIN 5' OF A PSLUD APPURTENANCE SUCH AS A WATER METER ASSEMBLY, BACK-FLOW DEVICE, FIRE HYDRANT OR REUSER CLEANOUT, ETC.

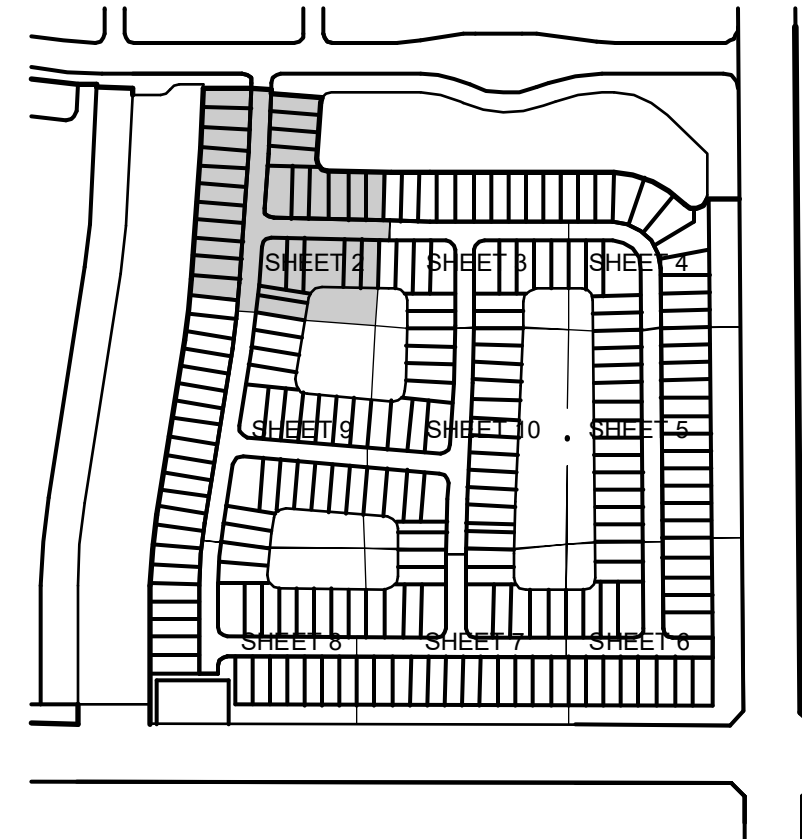
UTILITY & DRAINAGE EASEMENTS TO REMAIN CLEAR OF TREES UNLESS OTHERWISE APPROVED BY THE EASEMENT HOLDER.



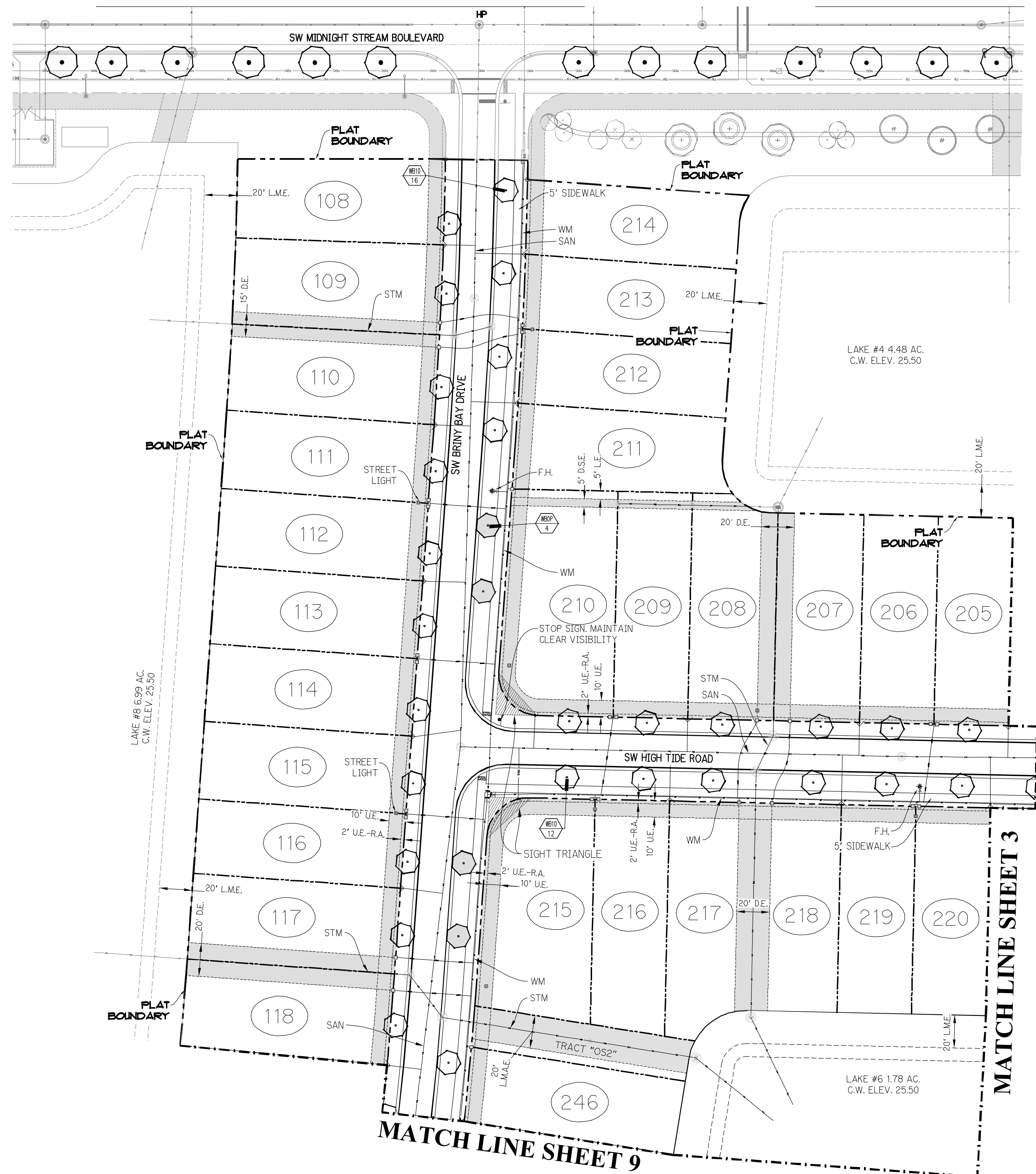
PARKER-YANNETTE
design group, inc.

LANDSCAPE ARCHITECTURE
PLANNING • GRAPHICS
825 South U.S. Highway One
Suite 330
Jupiter, Florida 33477

Telephone: (561) 747-5069
Fax: (561) 747-2041
Email: mail@pydg.com
License #LC-0000297



KEY MAP
N.T.S.



MATCH LINE SHEET 3

MATCH LINE SHEET 9

Plant List (Sheet P2-2 Only)

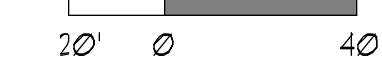
SYM.	QTY.	NAME	SPECIFICATIONS
WBD	28	Wodyetia bifurcata / Foxtail Palm	12" c.t., 4' min. cal. crown shaft, straight trunk, full head, unscarred trunk, intact fronds
WBCP	4	Optional Additional Street Tree - Wodyetia bifurcata / Foxtail Palm	12" c.t., 4' min. cal. crown shaft, straight trunk, full head, unscarred trunk, intact fronds

NOTE:
ALL PLANT MATERIAL SHALL MEET OR EXCEED SIZE AND CONTAINER SPECIFICATIONS IN PLANT LIST. PLANT MATERIALS NOT MEETING SPECIFICATIONS WILL BE REJECTED. CONTRACTOR TO COORDINATE AVAILABILITY ISSUES WITH OWNER PRIOR TO COMMENCING WORK.

* DENOTES NATIVE SPECIES

Symbols Legend

D.E.	DRAINAGE EASEMENT	O.E.	OVERHANG EASEMENT
L.M.E.	LINE MENTHANCE EASEMENT	G.C.	GRADING EASEMENT
L.M.A.E.	LINE MAINTENANCE ACCESS EASEMENT	P.S.L.	PORT ST LAGE
R.O.W.	RIGHT OF WAY	L.E.	LANDSCAPE EASEMENT
U.E.	UTILITY EASEMENT	D.S.E.	DRAINAGE SWALE EASEMENT
U.E.-R.A.	UTILITY EASEMENT - RESTRICTED AREA	O.S.	OPEN SPACE
STM	STORM SEWER LINE WITH MANHOLE	SAN	SEWER MANHOLE
STM	STORM SEWER LINE WITH CATCH BASIN	SM	SIGN
SAN	SANITARY SEWER LINE WITH MANHOLE	①	LOT NUMBER
WM	WATER MAIN	⊕	FIRE HYDRANT
W.M.	WATER SVC. TO LOT WITH METER		
S.O.	SANITARY SVC. TO LOT WITH CLEANOUT		

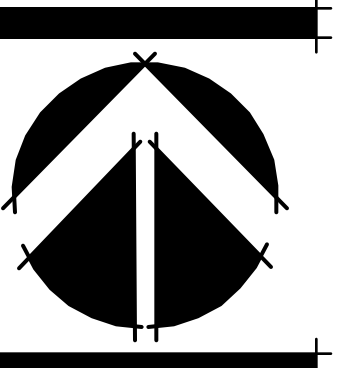


PSLUSD # 5268B PSL PROJECT NO. P22-276

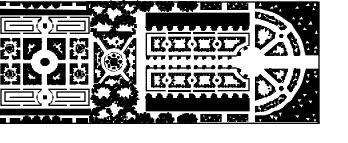
RIVERLAND - PARCEL 'D' PLAT 2
Developer: Riverland Associates III, LLLP
PORT ST. LUCIE, FLORIDA
PLANTING PLAN

DATE: 8/21/18
DRAWN BY: AJ/OTY
JOB NO.: 22-067
SCALE: 1" = 40'-0"
FILENAME: RLD 81TRP18

REVISIONS:
10/26/22 PSL Cirris
3/22/23 Resubmittal
4/4/23 Well site drainage
6/30/23 PSL Cirris



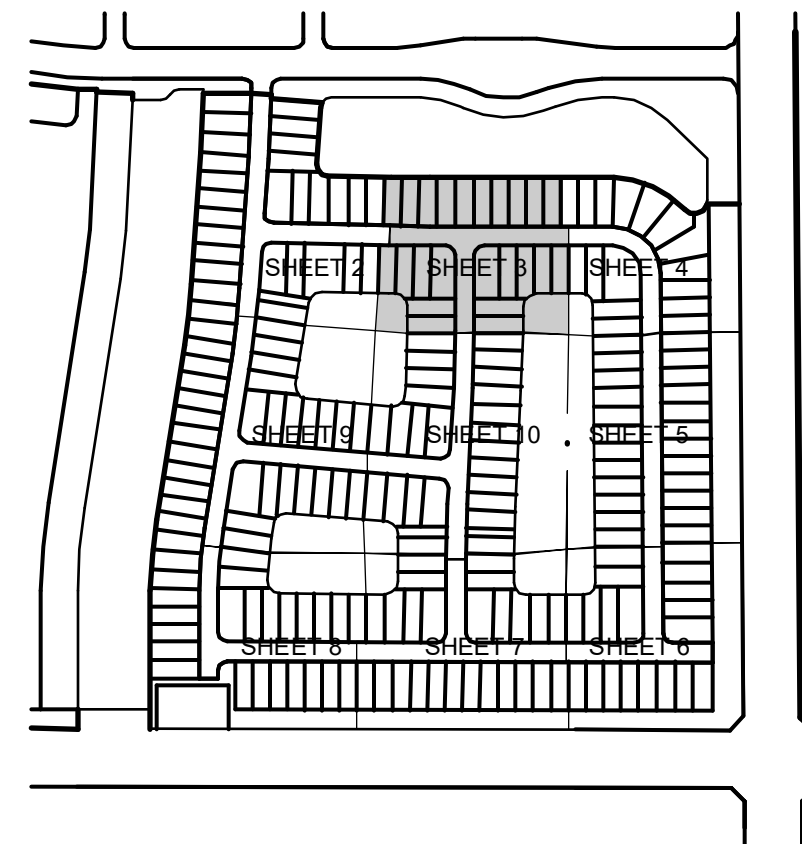
SHEET:
P2-2



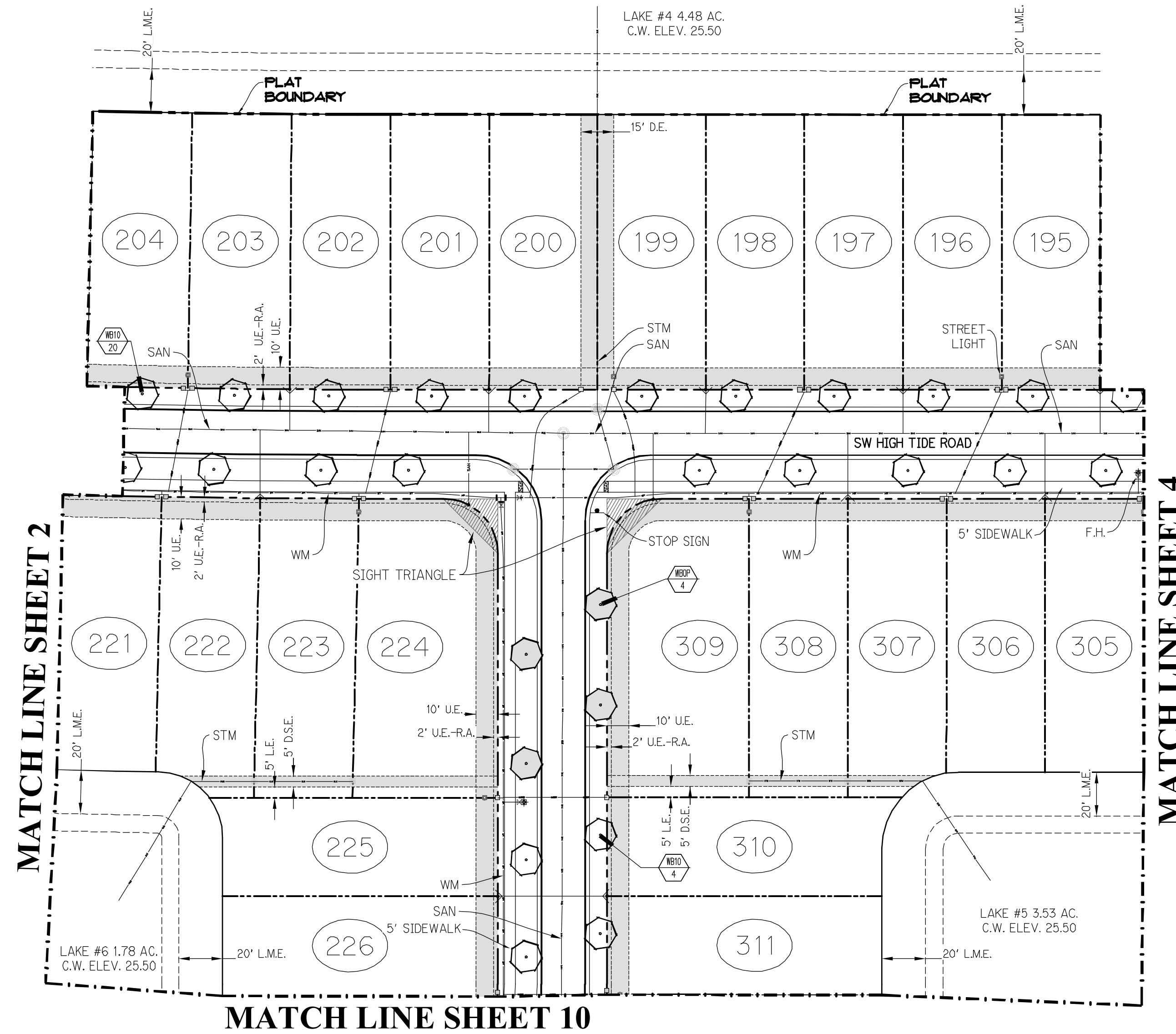
PARKER-YANNETTE
design group, inc.

LANDSCAPE ARCHITECTURE
PLANNING • GRAPHICS
825 South U.S. Highway One
Suite 330
Jupiter, Florida 33477

Telephone: (561) 747-5069
Fax: (561) 747-2041
Email: mail@pydg.com
License #LC-0000297



KEY MAP
N.T.S.



Plant List (Sheet P2-3 Only)

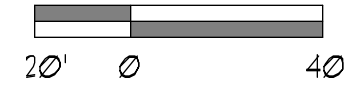
SYM	QTY	NAME	SPECIFICATIONS
UEB10	24	Wodyetia bifurcata / Foxtail Palm	10' cl, 4" min. cal. crown shaft, straight trunk, full head, unscarred trunk, intact fronds
UEOP	4	Optional Additional Street Tree - Wodyetia bifurcata / Foxtail Palm	10' cl, 4" min. cal. crown shaft, straight trunk, full head, unscarred trunk, intact fronds

NOTE:
ALL PLANT MATERIAL SHALL MEET OR EXCEED SIZE AND CONTAINER SPECIFICATIONS IN PLANT LIST. PLANT MATERIALS NOT MEETING SPECIFICATIONS WILL BE REJECTED. CONTRACTOR TO COORDINATE AVAILABILITY ISSUES WITH OWNER PRIOR TO COMMENCING WORK.

* DENOTES NATIVE SPECIES

Symbols Legend

D.E.	DRAINAGE EASEMENT	O.E.	OVERHANG EASEMENT
L.M.E.	LAKE MAINTENANCE EASEMENT	G.E.	GRADING EASEMENT
L.M.A.E.	LAKE MAINTENANCE ACCESS EASEMENT	P.S.L.	PORT ST LUCIE
FLOW	FLOW	L.E.	LANDSCAPE EASEMENT
UE	UTILITY EASEMENT	D.S.E.	DRAINAGE SWALE EASEMENT
UE-RA	UTILITY EASEMENT - RESTRICTED AREA (SEE "UE" PLAT DEDICATION)	O.S.	OPEN SPACE
STM	STORM SEWER LINE WITH MANHOLE	SAM	SEED & MULCH
STM	STORM SEWER LINE WITH CATCH BASIN	SIA	SIGN
SAN	SANITARY SEWER LINE WITH MANHOLE	LOT	LOT NUMBER
WM	WATER MAIN	FB	FIRE HYDRANT
W.M.	WATER SVC. TO LOT WITH METER		
SAN	SANITARY SVC. TO LOT WITH CLEANOUT		

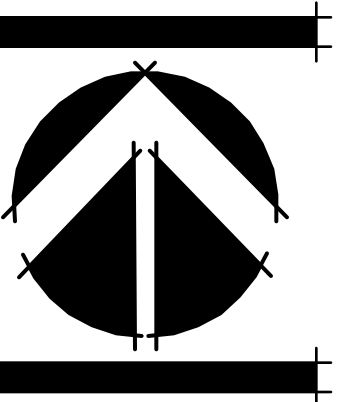


PSLUSD # 5268B PSL PROJECT NO. P22-276

RIVERLAND - PARCEL 'D' PLAT 2
Developer: Riverland Associates III, LLLP
PORT ST. LUCIE, FLORIDA
PLANTING PLAN

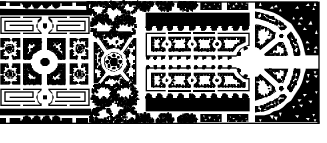
DATE: 8/21/18
DRAWN BY: AJ/OTY
JOB NO.: 22-067
SCALE: 1" = 40'-0"
FILENAME: RLD_SITPLAN

REVISIONS:
10/26/22 PSL Cirrta
3/22/23 Resubmittal
4/4/23 Well site drainage
6/30/23 PSL Cirrta



SHEET:

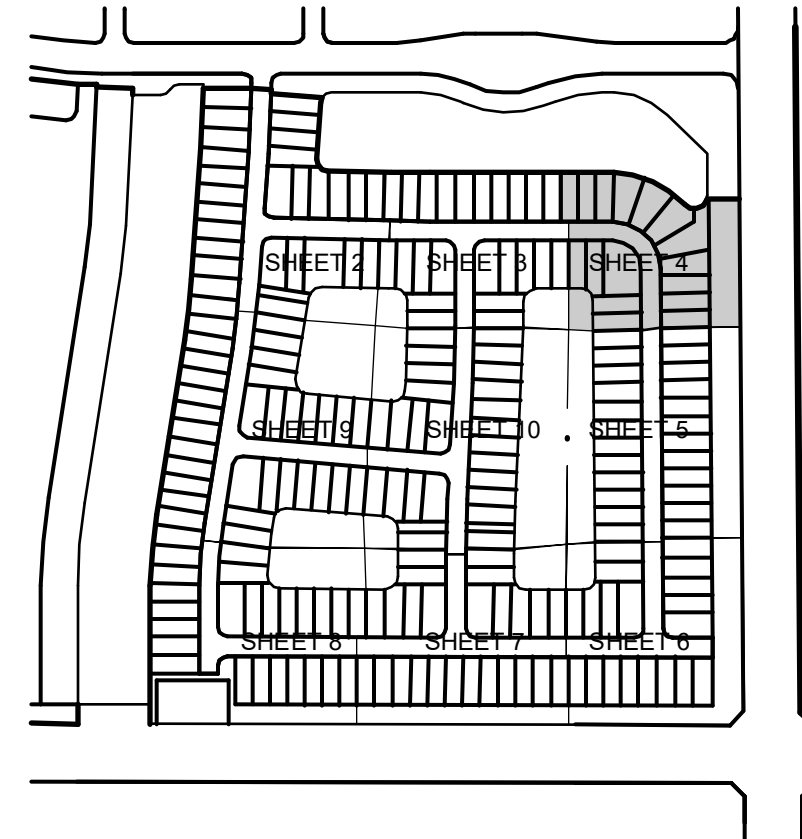
P2-3



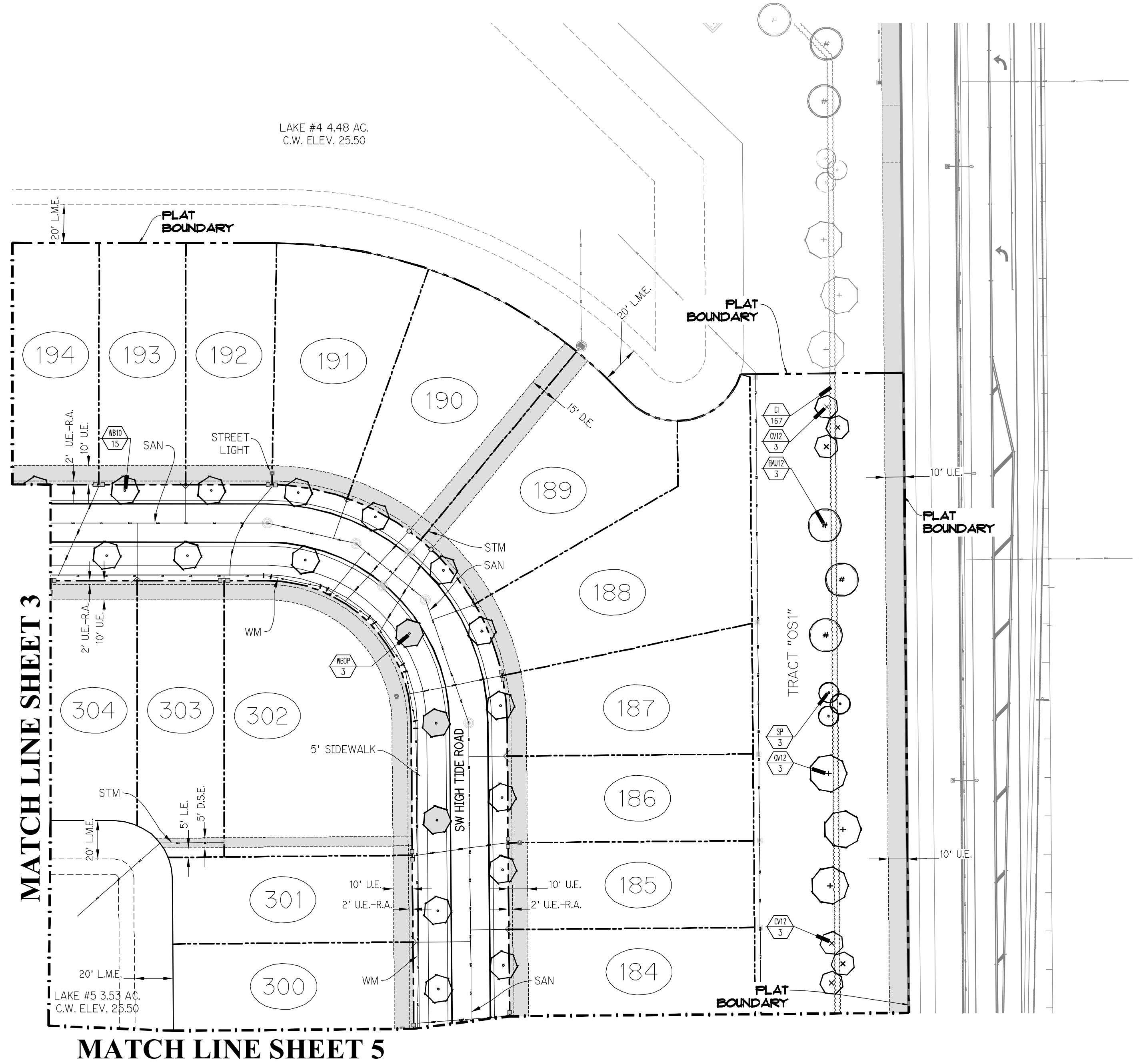
PARKER-YANNETTE
design group, inc.

LANDSCAPE ARCHITECTURE
PLANNING • GRAPHICS
825 South U.S. Highway One
Suite 330
Jupiter, Florida 33477

Telephone: (561) 747-5069
Fax: (561) 747-2041
Email: mail@pydg.com
License #LC-0000297



KEY MAP
N.T.S.



MATCH LINE SHEET 3

MATCH LINE SHEET 5

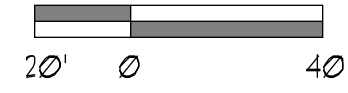
Plant List (Sheet P2-4 Only)

SYM.	QTY.	NAME	SPECIFICATIONS
TREES			
BAU2	3	Bauhinia blaxiana / Hong Kong Orchid	12" x 5", 25' cal., 5' cl., straight trunk, full canopy
CV2	6	Callistemon viminalis / Weeping Bottlebrush	12" ht., full canopy
* QV2	3	Quercus virginiana / Live Oak	12" x 6", 25' cal., straight trunk, full canopy
PALMS			
* SP	3	Sabal palmetto / Cabbage Palm	10' - 22' c.t. hts., staggered hts., hurricane cut, straight trunk, slick
UE10	15	Wodyetia bifurcata / Foxtail Palm	10' c.t., 4" min. cal. crown shaft, straight trunk, full head, unscarred trunk, intact fronds
UE0P	3	Optional Additional Street Tree - Wodyetia bifurcata / Foxtail Palm	10' c.t., 4" min. cal. crown shaft, straight trunk, full head, unscarred trunk, intact fronds
SHRUBS, ACCENTS, AND GROUNDCOVER			
CI	167	Chrysothamnus toxicum / Cocoplum	3 gal., 20" x 20", full to base

NOTE:
ALL PLANT MATERIAL SHALL MEET OR EXCEED SIZE AND CONTAINER SPECIFICATIONS IN PLANT LIST. PLANT MATERIALS NOT MEETING SPECIFICATIONS WILL BE REJECTED. CONTRACTOR TO COORDINATE AVAILABILITY ISSUES WITH OWNER PRIOR TO COMMENCING WORK.
* DENOTES NATIVE SPECIES

Symbols Legend

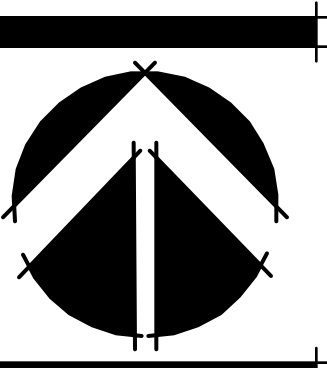
D.E.	DRAINAGE EASEMENT	O.E.	OVERHANG EASEMENT
L.M.E.	LAKE MAINTENANCE EASEMENT	G.E.	GRADING EASEMENT
L.M.A.E.	LAKE MAINTENANCE ACCESS EASEMENT	PSL	PORT ST LUCIE
R.O.U.T.	ROUTE OF WAY	L.E.	LANDSCAPE EASEMENT
U.E.	UTILITY EASEMENT	D.S.E.	DRAINAGE SWALE EASEMENT
U.E.-R.A.	UTILITY EASEMENT - RESTRICTED AREA	O.S.	OPEN SPACE
U.E.-P.L.E.	UTILITY EASEMENT - PLANT EASEMENT	S&M	SEED & MULCH
STM	STORM SEWER LINE WITH MANHOLE	S	SIGN
STM	STORM SEWER LINE WITH CATCH BASIN	1	LOT NUMBER
S&S	SANITARY SEWER LINE WITH MANHOLE	⊕	FIRE HYDRANT
WM	WATER MAIN		
W	WATER SVC. TO LOT WITH METER		
W	SANITARY SVC. TO LOT WITH CLEANOUT		



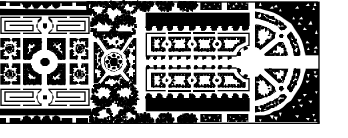
RIVERLAND - PARCEL 'D' PLAT 2
Developer: Riverland Associates III, LLLP
PORT ST. LUCIE, FLORIDA
PLANTING PLAN

DATE: 8/21/18
DRAWN BY: AJJO/TY
JOB NO.: 22-067
SCALE: 1" = 40'-0"
FILENAME: RLD_SIT.PLA

REVISIONS:
10/26/22 PSL Ciris
3/22/23 Resubmittal
4/4/23 Well site drainage
6/30/23 PSL Ciris



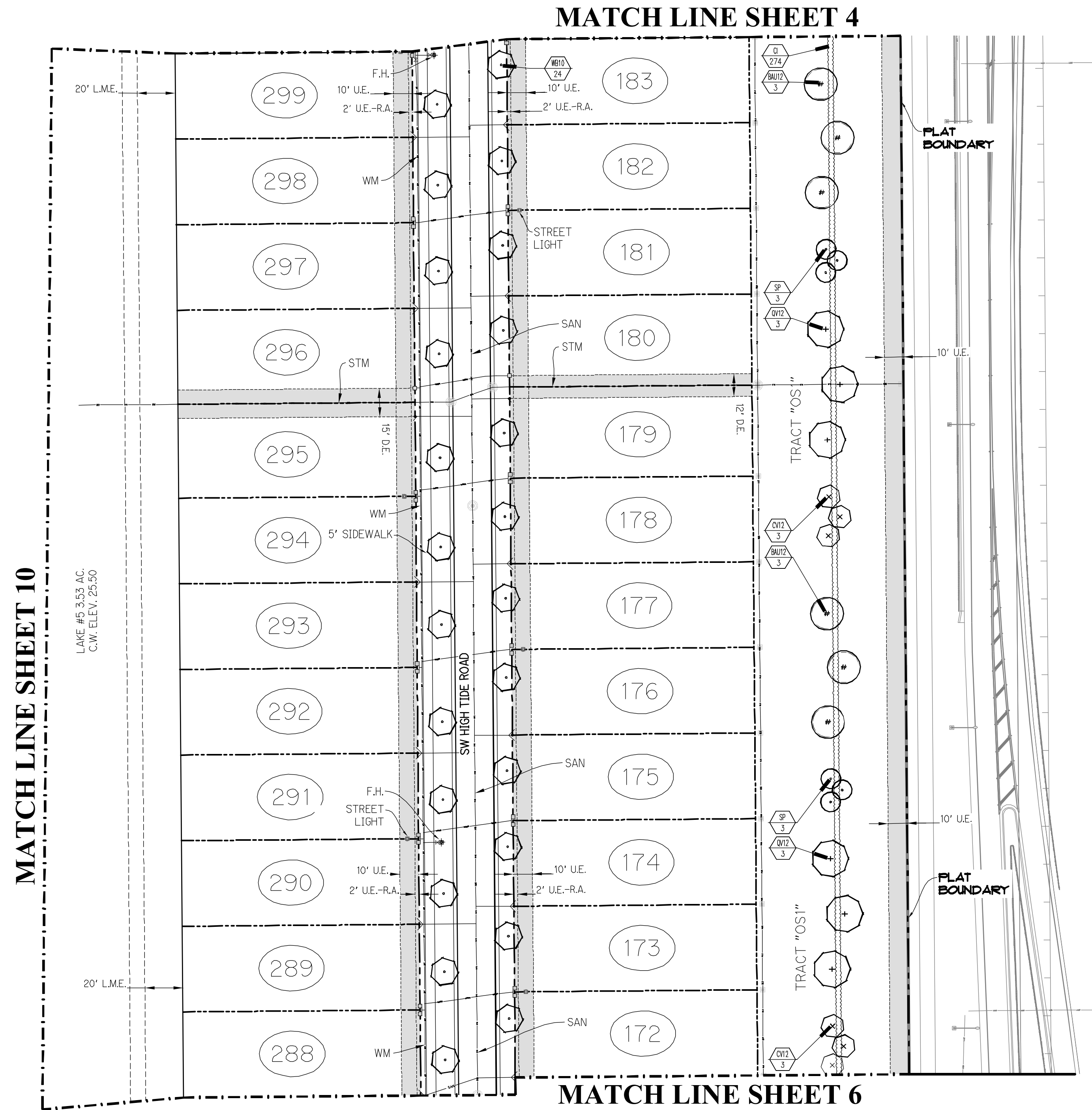
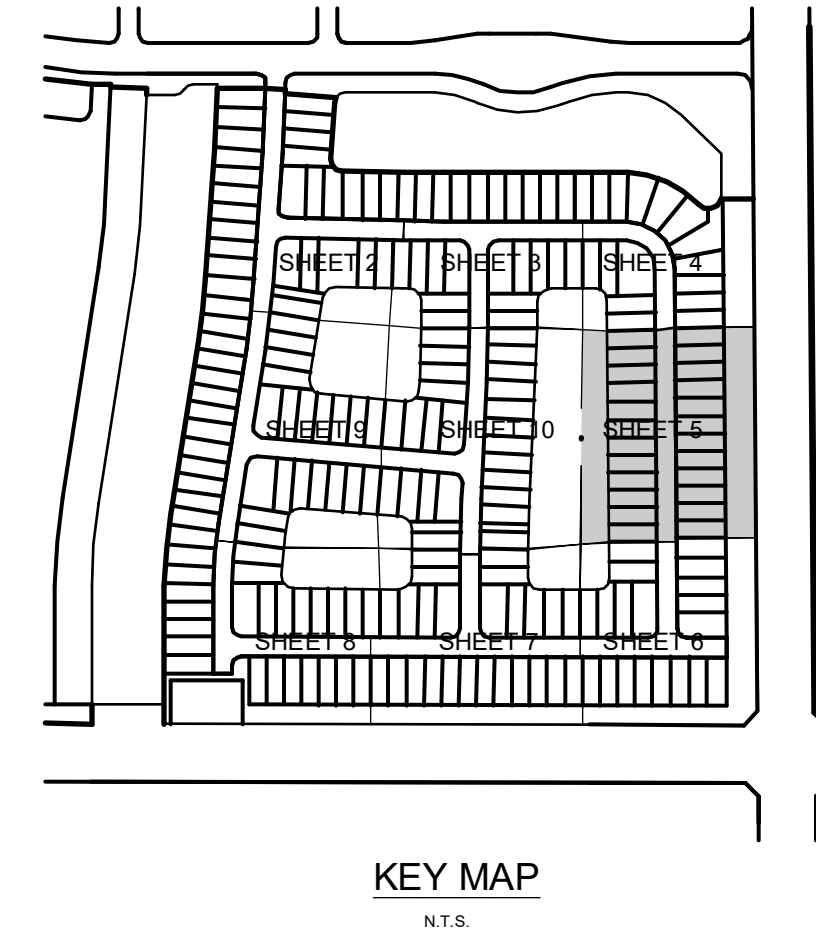
SHEET:



PARKER-YANNETTE
design group, inc.

LANDSCAPE ARCHITECTURE
PLANNING • GRAPHICS
825 South U.S. Highway One
Suite 330
Jupiter, Florida 33477

Telephone: (561) 747-5069
Fax: (561) 747-2041
Email: mail@pydg.com
License #LC-0000297



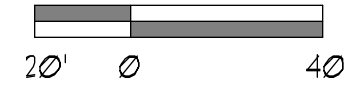
Plant List (Sheet P2-5 Only)

SYM.	QTY.	NAME	SPECIFICATIONS
TREES			
BALU2	6	Bauhinia blaxiana / Hong Kong Orchid	12' x 5', 25' cal, 5' c.t., straight trunk, full canopy
CV2	6	Callistemon viminalis / Weeping Bottlebrush	12' ht., full canopy
* CV2	6	Quercus virginiana / Live Oak	12' x 6', 25' cal., straight trunk, full canopy
PALMS			
* SP	6	Sabal palmetto / Cabbage Palm	10' - 22' c.t. hts., staggered hts., hurricane cut, straight trunk, slick
UB20	24	Wodyetia bifurcata / Foxtail Palm	10' c.t., 4" min. cal. crown shaft, straight trunk, full head, unscarred trunk, intact fronds
SHRUBS, ACCENTS, AND GROUNDCOVER			
CI	274	Chrysalidiana lacedo / Coccoloba	3 gal., 20" x 20", full to base

NOTE:
ALL PLANT MATERIAL SHALL MEET OR EXCEED SIZE AND CONTAINER SPECIFICATIONS IN PLANT LIST. PLANT MATERIALS NOT MEETING SPECIFICATIONS WILL BE REJECTED. CONTRACTOR TO COORDINATE AVAILABILITY ISSUES WITH OWNER PRIOR TO COMMENCING WORK.
* DENOTES NATIVE SPECIES

Symbols Legend

D.E.	DRAINAGE EASEMENT	O.E.	OVERHANG EASEMENT
L.M.E.	LAKE MAINTENANCE EASEMENT	G.C.	GRADING EASEMENT
L.M.A.E.	LAKE MAINTENANCE ACCESS EASEMENT	PSL	PORT ST LUCIE
R.O.W.	RIGHT OF WAY	L.E.	LANDSCAPE EASEMENT
U.E.	UTILITY EASEMENT	D.S.E.	DRAINAGE SWALE EASEMENT
U.E.-R.A.	UTILITY EASEMENT - RESTRICTED AREA	O.S.	OPEN SPACE
USE	USE PLANT DEDICATION	SAM	SEED & MALCH
STM	STORM SEWER LINE WITH MANHOLE	SIA	SIGN
S2M	STORM SEWER LINE WITH CATCH BASIN	LN	LOT NUMBER
SAN	SANITARY SEWER LINE WITH MANHOLE	FW	FIRE HYDRANT
WM	WATER MAIN		
W/M	WATER SVC. TO LOT WITH METER		
S/S	SANITARY SVC. TO LOT WITH CLEANOUT		

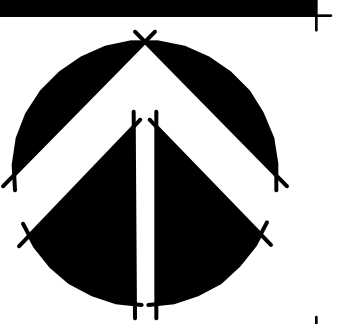


PSLUSD # 5268B PSL PROJECT NO. P22-276

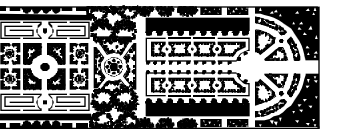
RIVERLAND - PARCEL 'D' PLAT 2
Developer: Riverland Associates III, LLLP
PORT ST. LUCIE, FLORIDA
PLANTING PLAN

DATE: 8/21/18
DRAWN BY: AJL/ITY
JOB NO.: 22-067
SCALE: 1" = 40'-0"
FILENAME: RLD 8/17/18

REVISIONS:
10/26/22 PSL Cirris
3/22/23 Resubmittal
4/4/23 Well site drainage
6/30/23 PSL Cirris



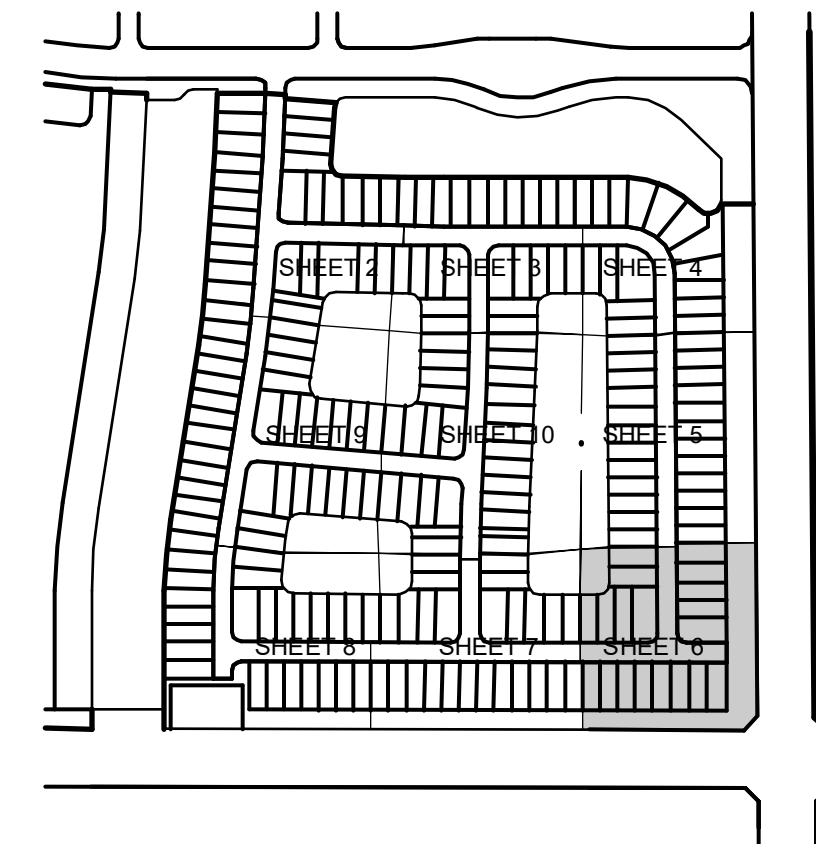
SHEET:
P2-5



PARKER-YANNETTE
design group, inc.

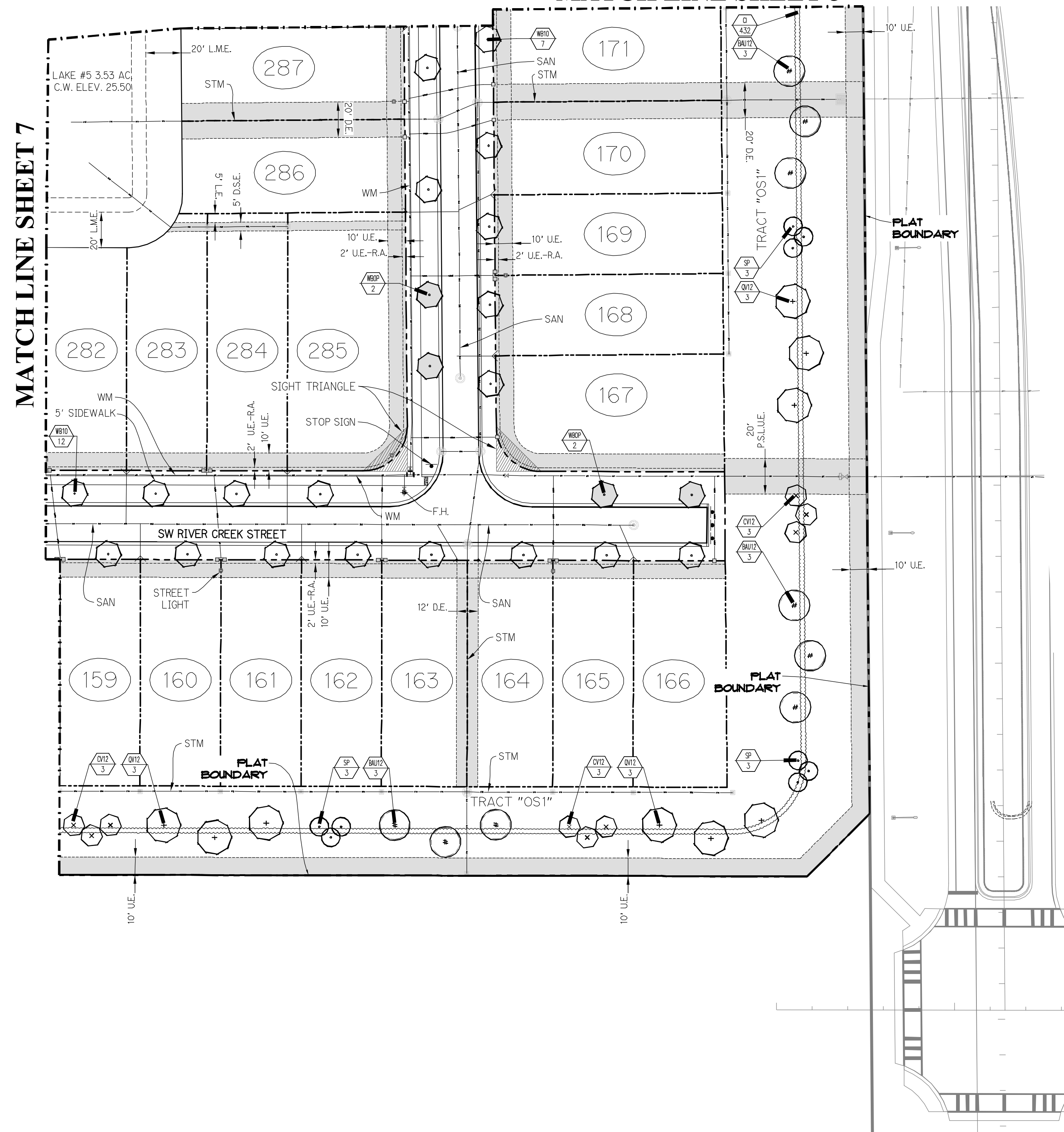
LANDSCAPE ARCHITECTURE
PLANNING • GRAPHICS
825 South U.S. Highway One
Suite 330
Jupiter, Florida 33477

Telephone: (561) 747-5069
Fax: (561) 747-2041
Email: mail@pydg.com
License #LC-0000297



KEY MAP
N.T.S.

MATCH LINE SHEET 5



MATCH LINE SHEET 7

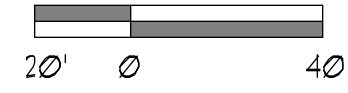
Plant List (Sheet P2-6 Only)

SYM.	QTY.	NAME	REMARKS
TREES			
BAUD2	9	Bauhinia blakeana / Hong Kong Orchid	12' x 5', 25' cal. 5' c.t. straight trunk, full canopy
CV12	9	Callistemon viminalis / Weeping Bottlebrush	12' ht. full canopy
* QV2	9	Quercus virginiana / Live Oak	12' x 6', 25' cal. straight trunk, full canopy
PALMS			
* 5P	9	Sabal palmetto / Cabbage Palm	10' - 22' c.t. hts. staggered hts. hurricane cut, straight trunk, slick
LEB10	15	Lodygetia bifurcata / Foxtail Palm	10' c.t. 4" sh. cal. crown sharp, straight trunk, full head, unscarred trunk, intact fronds
LEOP	4	Optional Additional Street Tree - Lodygetia bifurcata / Foxtail Palm	10' c.t. 4" sh. cal. crown sharp, straight trunk, full head, unscarred trunk, intact fronds
SHRUBS, ACCENTS, AND GROUNDCOVER			
CI	432	Chrysothamnus (caco) / Coccoloba	3 gal. 20" x 20", full to base

NOTE:
ALL PLANT MATERIAL SHALL MEET OR EXCEED SIZE AND CONTAINER SPECIFICATIONS IN PLANT LIST. PLANT MATERIALS NOT MEETING SPECIFICATIONS WILL BE REJECTED. CONTRACTOR TO COORDINATE AVAILABILITY ISSUES WITH OWNER PRIOR TO COMMENCING WORK.
* DENOTES NATIVE SPECIES

Symbols Legend

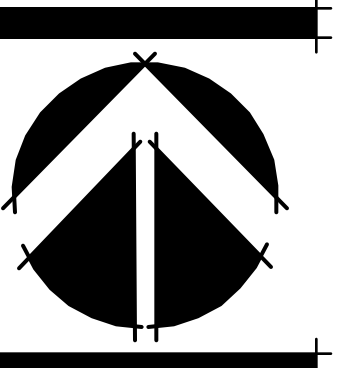
D.E.	DRAINAGE EASEMENT	O.E.	OVERHANG EASEMENT
L.M.E.	LAKE MAINTENANCE EASEMENT	G.E.	GRADING EASEMENT
L.M.A.E.	LAKE MAINTENANCE ACCESS EASEMENT	P.S.L.	PORT ST. LUCE
R.O.W.	RIGHT OF WAY	L.E.	LANDSCAPE EASEMENT
U.E.	UTILITY EASEMENT	D.S.E.	DRAINAGE SWALE EASEMENT
U.E.-R.A.	UTILITY EASEMENT - RESTRICTED AREA	O.S.	OPEN SPACE
U.E.-R.A. (2)	UTILITY EASEMENT - RESTRICTED AREA (2)	SAM	SEED & MAINT.
STM	STORM SEWER LINE WITH MANHOLE	▲	SIGN
STM	STORM SEWER LINE WITH CATCH BASIN	○	LOT NUMBER
SAN	SANITARY SEWER LINE WITH MANHOLE	▲	FIRE HYDRANT
WM	WATER MAIN		
W/M	WATER SVC. TO LOT WITH METER		
S.S.	SANITARY SVC. TO LOT WITH CLEANOUT		



RIVERLAND - PARCEL 'D' PLAT 2
Developer: Riverland Associates III, LLLP
PORT ST. LUCIE, FLORIDA
PLANTING PLAN

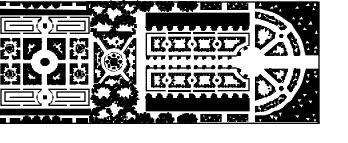
DATE: 8/21/9
DRAWN BY: AJO/TY
JOB NO.: 22-067
SCALE: 1" = 40'-0"
FILENAME: RLD 51TRP1

REVISIONS:
10/26/22 PSL Cirris
3/22/23 Resubmittal
4/4/23 Well site drainage
6/30/23 PSL Cirris



SHEET:

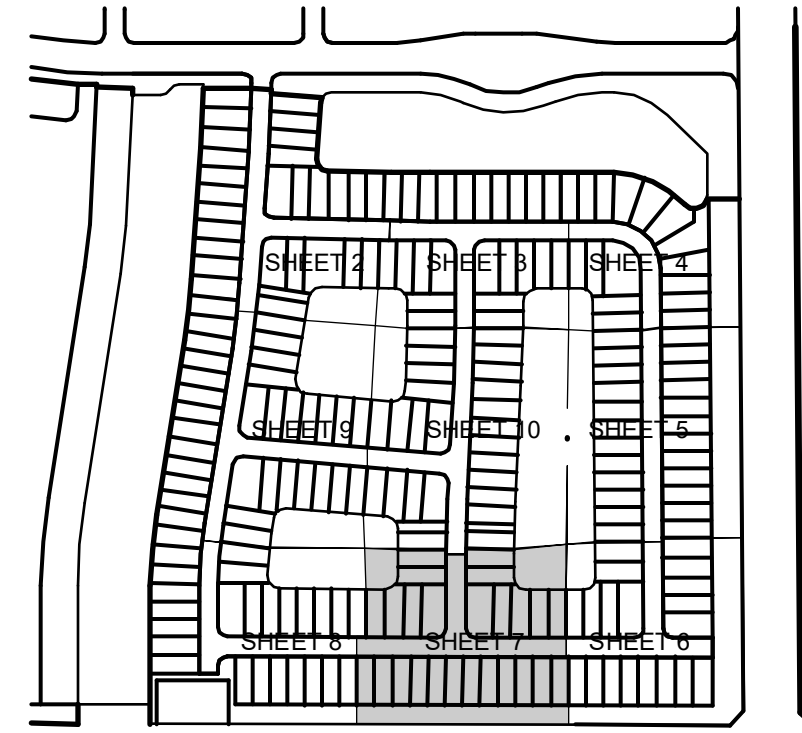
P2-6



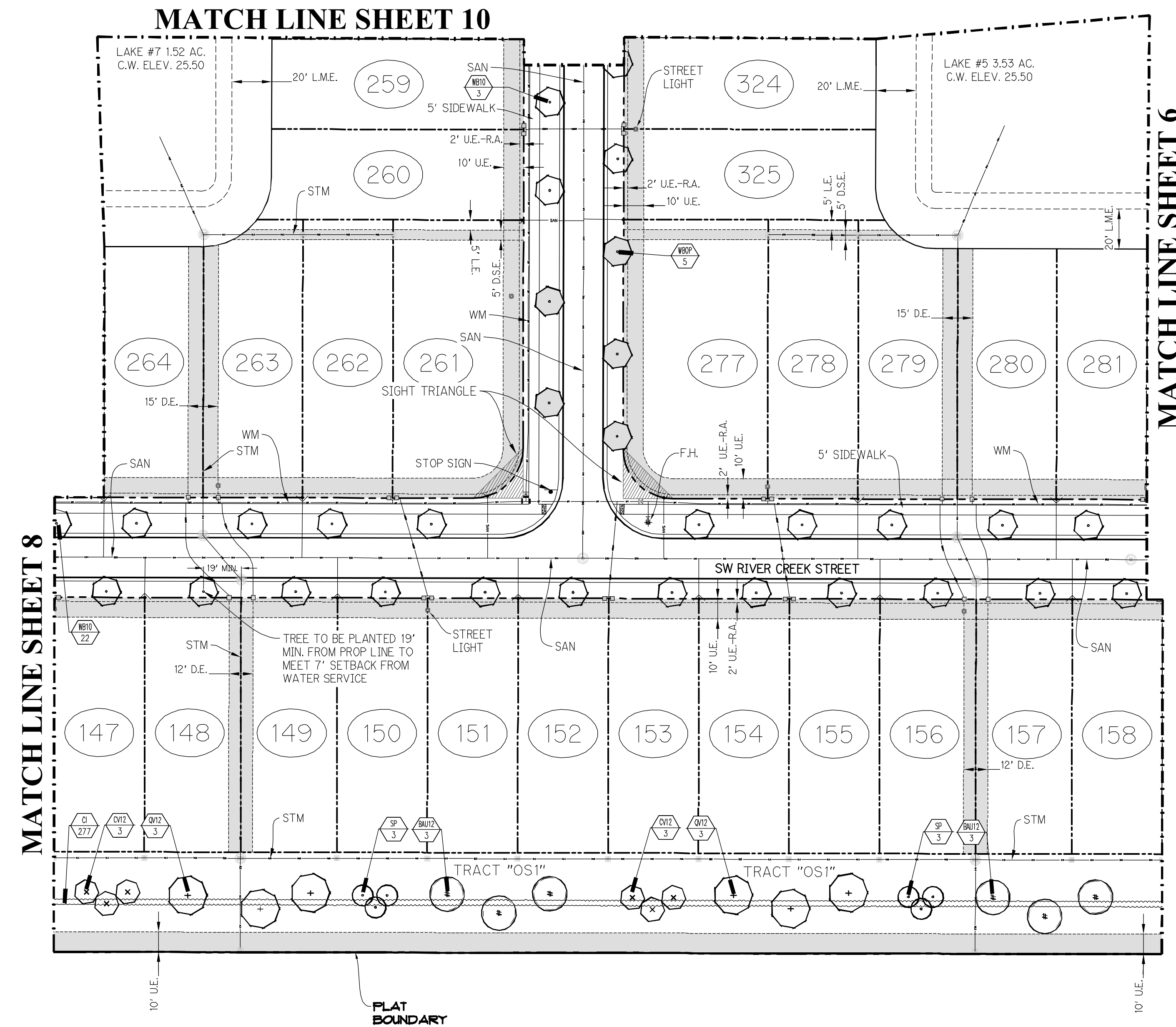
PARKER-YANNETTE
design group, inc.

LANDSCAPE ARCHITECTURE
PLANNING • GRAPHICS
825 South U.S. Highway One
Suite 330
Jupiter, Florida 33477

Telephone: (561) 747-5069
Fax: (561) 747-2041
Email: mail@pydg.com
License #LC-0000297



KEY MAP
N.T.S.



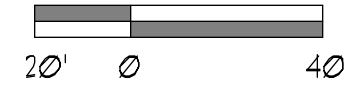
Plant List (Sheet P2-7 Only)

SYM.	QTY.	NAME	SPECIFICATIONS
TREES			
BALU2	6	Bauhinia lakkeana / Hong Kong Orchid	12' x 5' 28' cal. 8' c.t. straight trunk, full canopy
CV2	6	Callistemon viminalis / Weeping Bottlebrush	12' ht., full canopy
QV2	6	Quercus virginiana / Live Oak	12' x 6' 28' cal., straight trunk, full canopy
PALMS			
SP	6	Sabal palmetto / Cabbage Palm	10' - 22' c.t. hts., staggered hts., hurricane cut, straight trunk, 8' cal.
WB10	25	Wodyetia bifurcata / Foxtail Palm	10' c.t., 4' min. cal. crown shaft, straight trunk, full head, unscarred trunk, intact fronds
WBOP	5	Optional Additional Street Tree - Wodyetia bifurcata / Foxtail Palm	10' c.t., 4' min. cal. crown shaft, straight trunk, full head, unscarred trunk, intact fronds
SHRUBS, ACCENTS, AND GROUNDCOVER			
CI	271	Chrysobalanus icaco / Coccoloba	3 gal, 20" x 20", full to base

NOTE:
ALL PLANT MATERIAL SHALL MEET OR EXCEED SIZE AND CONTAINER SPECIFICATIONS IN PLANT LIST. PLANT MATERIALS NOT MEETING SPECIFICATIONS WILL BE REJECTED. CONTRACTOR TO COORDINATE AVAILABILITY ISSUES WITH OWNER PRIOR TO COMMENCING WORK.
* DENOTES NATIVE SPECIES

Symbols Legend

D.E.	DRAINAGE EASEMENT	O.E.	OVERHANG EASEMENT
L.M.E.	LAKE MAINTENANCE EASEMENT	O.E.	ORIGIN EASEMENT
L.M.A.E.	LAKE MAINTENANCE ACCESS EASEMENT	PSL	PORT ST LUCIE
R.O.W.	RIGHT OF WAY	L.E.	LANDSCAPE EASEMENT
U.E.	UTILITY EASEMENT	D.S.E.	DRAINAGE SWALE EASEMENT
U.E.-RA	UTILITY EASEMENT - RESTRICTED AREA	O.S.	OPEN SPACE
STM	STORM SEWER LINE WITH MANHOLE	S&M	SEED & MULCH
STM	STORM SEWER LINE WITH CATCH BASIN	▲	SIGN
S&S	SANITARY SEWER LINE WITH MANHOLE	①	LOT NUMBER
WM	WATER MAIN	⚡	FIRE HYDRANT
W	WATER SVC. TO LOT WITH METER		
W.C.O.	SANITARY SVC. TO LOT WITH CLEANOUT		

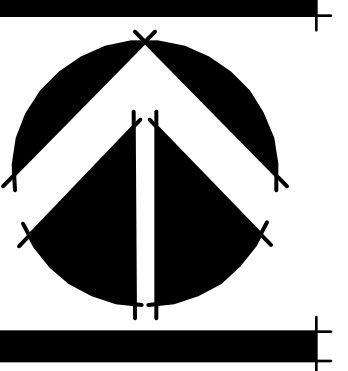


PSLUSD # 5268B PSL PROJECT NO. P22-276

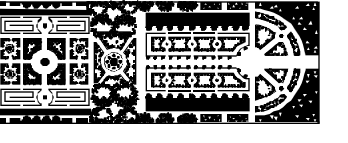
RIVERLAND - PARCEL 'D' PLAT 2
Developer: Riverland Associates III, LLLP
PORT ST. LUCIE, FLORIDA
PLANTING PLAN

DATE: 8/21/18
DRAWN BY: AJ/OTY
JOB NO.: 22-067
SCALE: 1" = 40'-0"
FILENAME: RLD 81TRP18

REVISIONS:
10/26/22 PSL Cirris
3/22/23 Resubmittal
4/4/23 Well site drainage
6/30/23 PSL Cirris



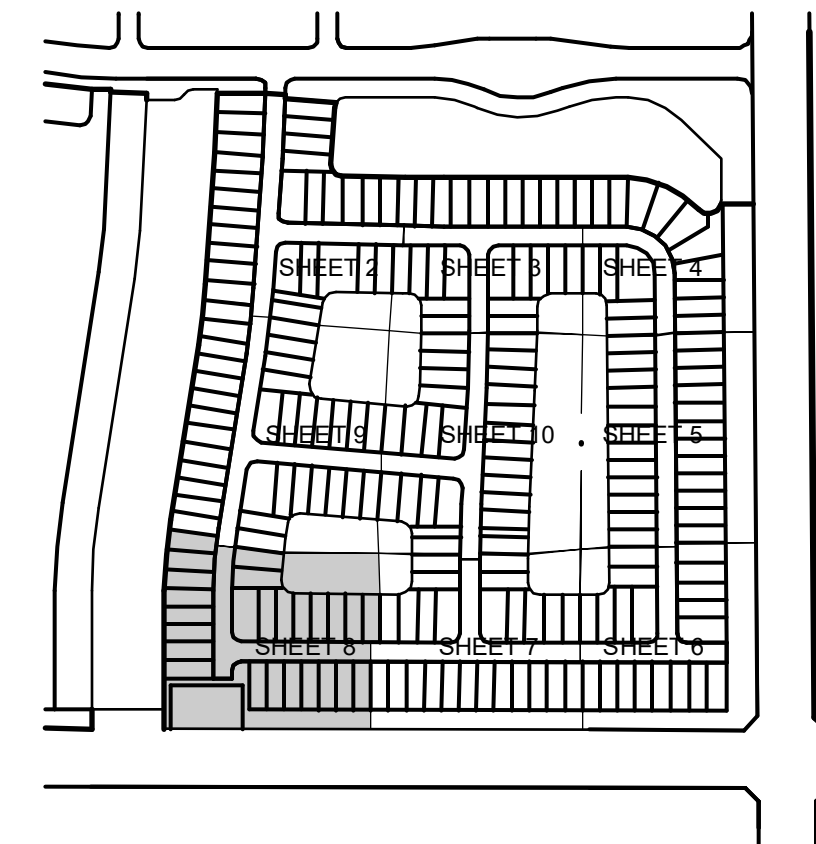
SHEET:
P2-7



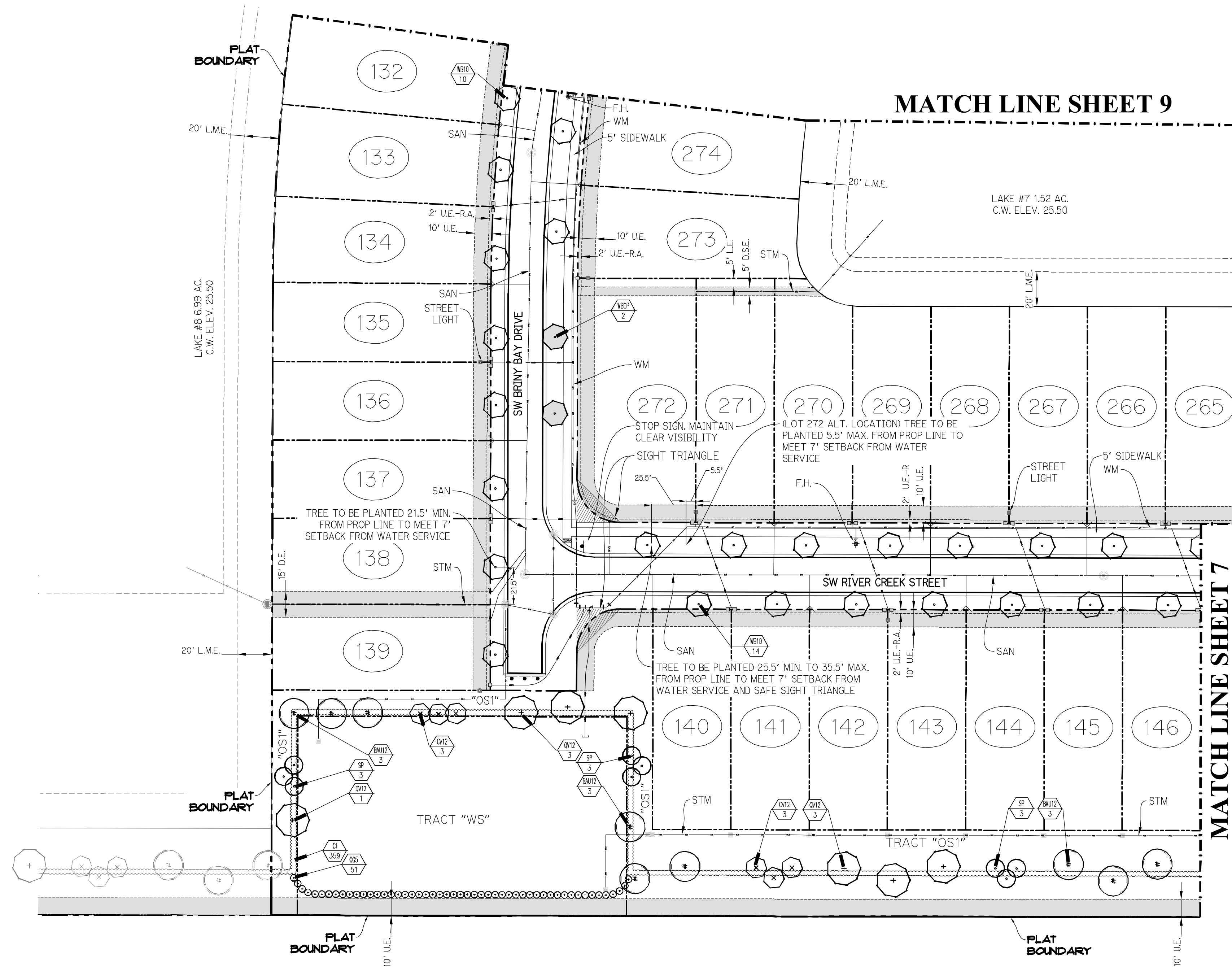
PARKER-YANNETTE
design group, inc.

LANDSCAPE ARCHITECTURE
PLANNING • GRAPHICS
825 South U.S. Highway One
Suite 330
Jupiter, Florida 33477

Telephone: (561) 747-5069
Fax: (561) 747-2041
Email: mail@pydg.com
License #LC-0000297



KEY MAP
N.T.S.



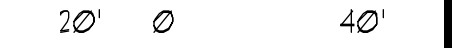
Plant List (Sheet P2-8 Only)

SYM	QTY	NAME	SPECIFICATIONS
TREES			
BAUD	9	Bauhinia blakeana / Hong Kong Orchid	12' x 6", 25' cal, 5' c.t., straight trunk, full canopy
CV12	6	Callisander viminalis / Weeping Bottlebrush	12' h.t., full canopy
QV12	1	Quercus virginiana / Live Oak	12' x 6", 25' cal, straight trunk, full canopy
PALMS			
SP	9	Sabal palmetto / Cabbage Palm	10' - 22' c.t. hts., staggered hts., hurricane cut, straight trunk, slick
LB10	24	Wodyetia bifurcata / Foxtail Palm	10' c.t., 4' min. cal. crown shaft, straight trunk, full head, unscarred trunk, insect fronds
LBOP	1	Optional Additional Street Tree - Wodyetia bifurcata / Foxtail Palm	10' c.t., 4' min. cal. crown shaft, straight trunk, full head, unscarred trunk, insect fronds
SHRUBS, ACCENTS, AND GROUNDCOVER			
CI	359	Origanosaurus lasco / Coccoloba	3 gal., 20" x 20", full to base
CG5	51	Clusia gustifera / Small Leaf Clusia	15 gal., 9" x 3", full to base, dense

NOTE:
ALL PLANT MATERIAL SHALL MEET OR EXCEED SIZE AND CONTAINER SPECIFICATIONS IN PLANT LIST. PLANT MATERIALS NOT MEETING SPECIFICATIONS WILL BE REJECTED. CONTRACTOR TO COORDINATE AVAILABILITY MATTERS WITH OWNER PRIOR TO COMMENCING WORK.
* DENOTES NATIVE SPECIES

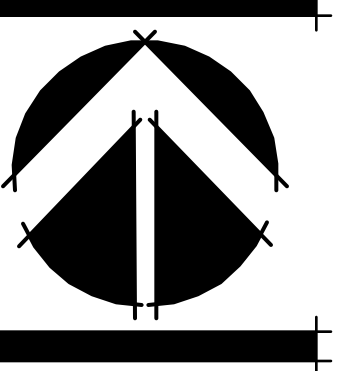
Symbols Legend

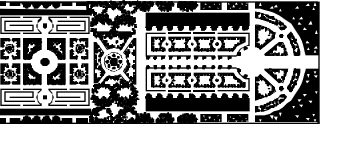
D.E.	DRAINAGE EASEMENT	O.E.	OVERHANG EASEMENT
L.M.E.	LAKE MAINTENANCE EASEMENT	G.E.	GRADING EASEMENT
L.M.A.E.	LAKE MAINTENANCE ACCESS EASEMENT	PSL	PORT ST LUCIE
R.O.W.	RIGHT OF WAY	L.E.	LANDSCAPE EASEMENT
U.E.	UTILITY EASEMENT	D.S.E.	DRAINAGE SWALE EASEMENT
U.E.-R.A.	UTILITY EASEMENT - RESTRICTED AREA (SEE "U.E." PLAT DESIGNATION)	O.S.	OPEN SPACE
STM	STORM SEWER LINE WITH MANHOLE	SKM	SEED & MULCH
STM	STORM SEWER LINE WITH CATCH BASIN	SM	STONE
SAN	SANITARY SEWER LINE WITH MANHOLE	LOT	LOT NUMBER
WM	WATER MAIN	W.M.	FIRE HYDRANT
W.M.	WATER SVC. TO LOT WITH METER		
W.M.	WATER SVC. TO LOT WITH CLEANOUT		



RIVERLAND - PARCEL 'D' PLAT 2
Developer: Riverland Associates III, LLLP
PORT ST. LUCIE, FLORIDA
PLANTING PLAN

DATE: 8/21/19
DRAWN BY: AJJO/TY
JOB NO.: 22-067
SCALE: 1" = 40'-0"
FILENAME: RLD 81TRP19

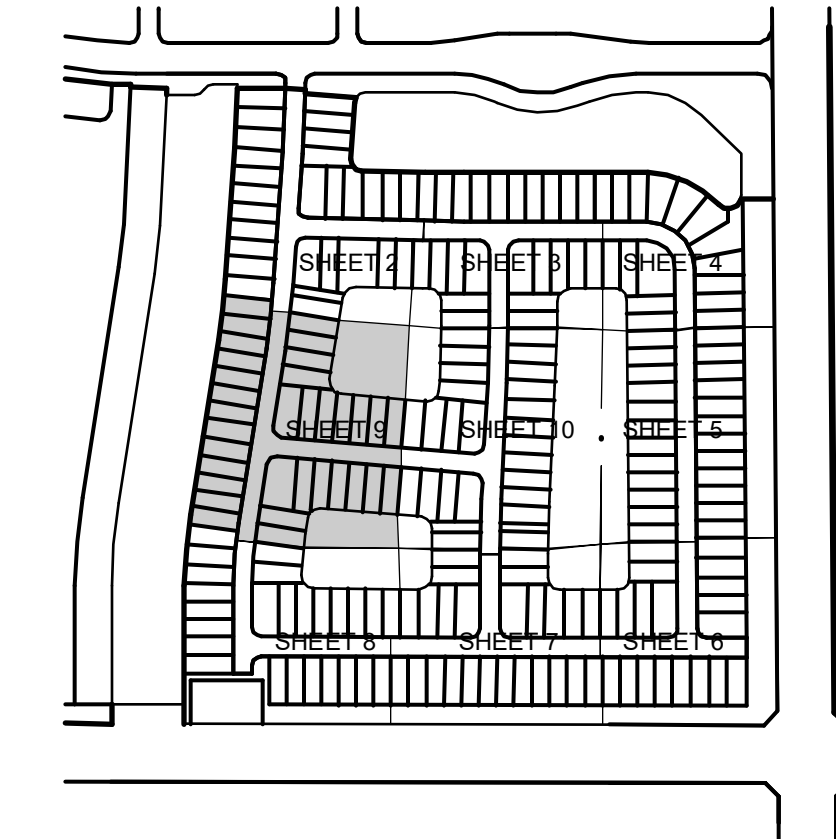




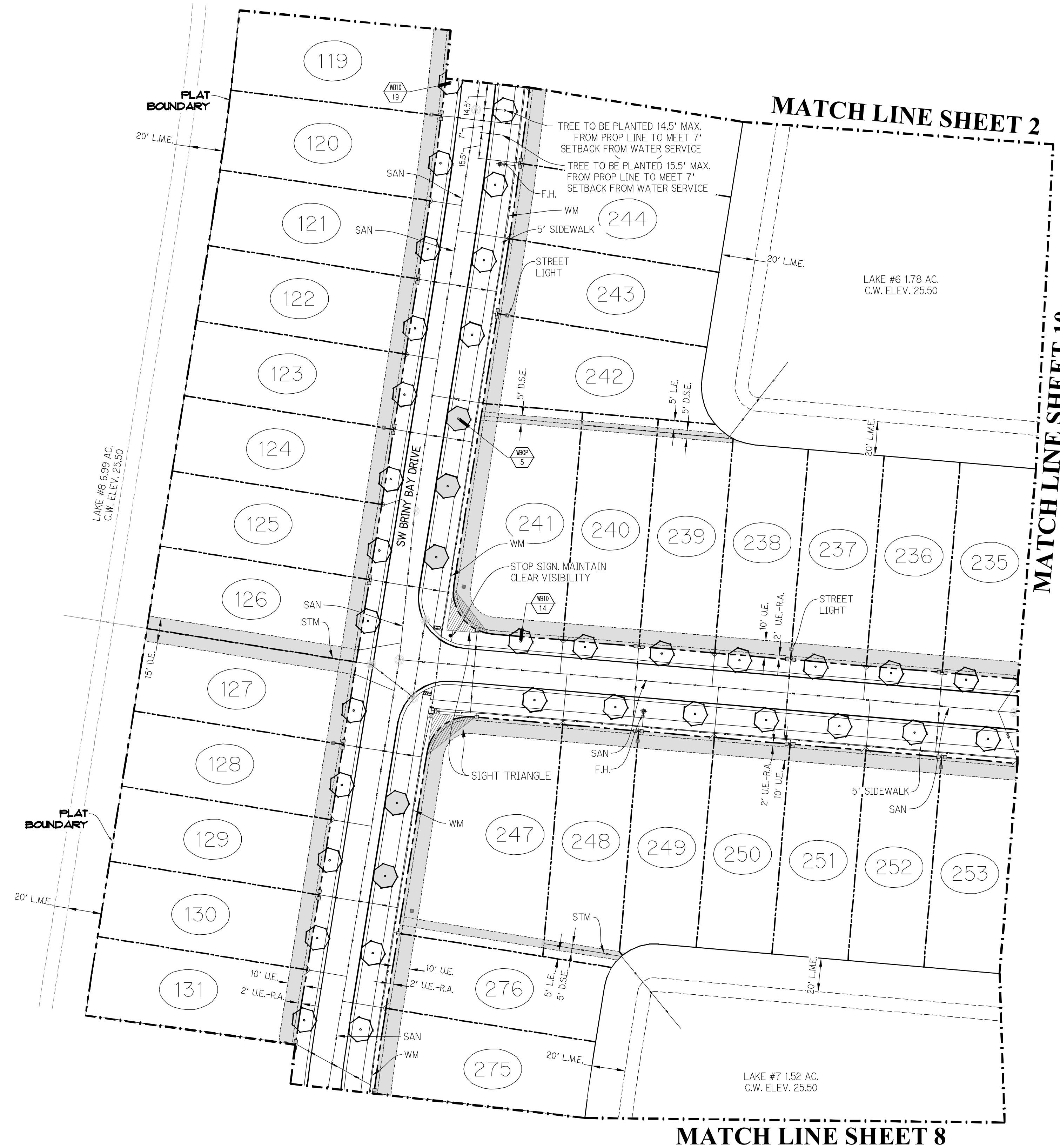
PARKER-YANNETTE
design group, inc.

LANDSCAPE ARCHITECTURE
PLANNING • GRAPHICS
825 South U.S. Highway One
Suite 330
Jupiter, Florida 33477

Telephone: (561) 747-5069
Fax: (561) 747-2041
Email: mail@pydg.com
License #LC-0000297



KEY MAP
N.T.S.



Plant List (Sheet P2-9 Only)

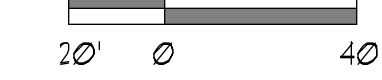
SYM	QTY	NAME	SPECIFICATIONS
WBP	33	Wodyetia bifurcata / Foxtail Palm	10' CL, 4" min. cal. crown shaft, straight trunk, full head, unscarred trunk, intact fronds
WBP	5	Optional Additional Street Trees - Wodyetia bifurcata / Foxtail Palm	10' CL, 4" min. cal. crown shaft, straight trunk, full head, unscarred trunk, intact fronds

NOTE:
ALL PLANT MATERIAL SHALL MEET OR EXCEED SIZE AND CONTAINER SPECIFICATIONS IN PLANT LIST. PLANT MATERIAL & NOT MEETING SPECIFICATIONS WILL BE REJECTED. CONTRACTOR TO COORDINATE AVAILABILITY ISSUES WITH OWNER PRIOR TO COMMENCING WORK.

* DENOTES NATIVE SPECIES

Symbols Legend

D.E.	DRAINAGE EASEMENT	O.E.	OVERHANG EASEMENT
L.M.E.	LAKE MAINTENANCE EASEMENT	G.E.	GRADING EASEMENT
L.M.A.E.	LAKE MAINTENANCE ACCESS EASEMENT	PSL	PORT ST LUCIE
R.O.W.	RIGHT OF WAY	L.E.	LANDSCAPE EASEMENT
U.E.	UTILITY EASEMENT	D.S.E.	DRAINAGE SWALE EASEMENT
U.E.-R.A.	UTILITY EASEMENT - RESTRICTED AREA	O.S.	OPEN SPACE
USE "U.E." PLAT DEDICATION		SAM	SEED & MULCH
STM	STORM SEWER LINE WITH MANHOLE	S	SIGN
SLM	STORM SEWER LINE WITH CATCH BASIN	1	LOT NUMBER
SAN	SANITARY SEWER LINE WITH MANHOLE	⚡	FIRE HYDRANT
WM	WATER MAIN		
⚡	WATER SVC. TO LOT WITH METER		
W.M.	WATER MAIN		
⚡	SANITARY SVC. TO LOT WITH CLEANSOUT		
S.S.	SANITARY SVC. TO LOT WITH CLEANSOUT		

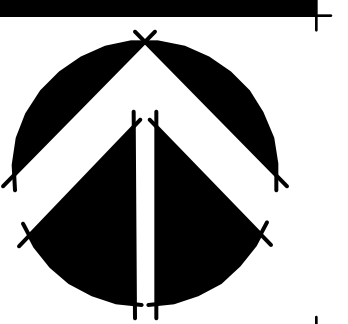


PSLUSD # 5268B PSL PROJECT NO. P22-276

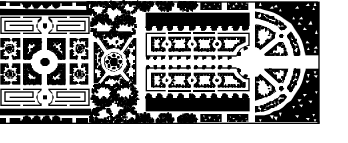
RIVERLAND - PARCEL 'D' PLAT 2
Developer: Riverland Associates III, LLLP
PORT ST. LUCIE, FLORIDA
PLANTING PLAN

DATE: 8/21/8
DRAWN BY: AJ/OTY
JOB NO.: 22-067
SCALE: 1" = 40'-0"
FILENAME: RLD 81TRP14

REVISIONS:
10/26/22 PSL Ciris
3/22/23 Resubmittal
4/4/23 Well site drainage
6/30/23 PSL Ciris



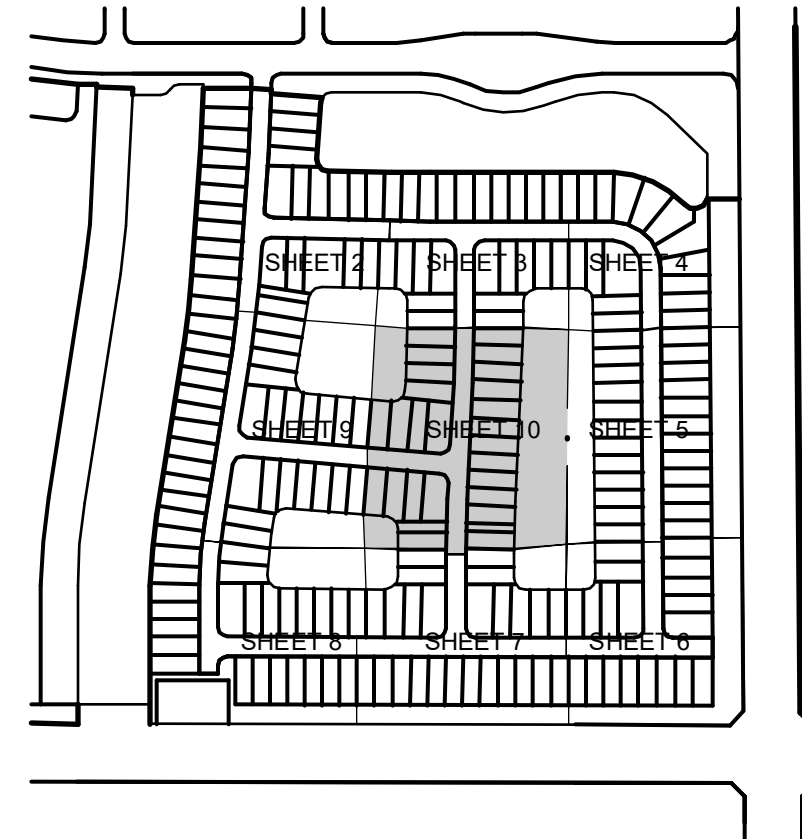
SHEET:
P2-9



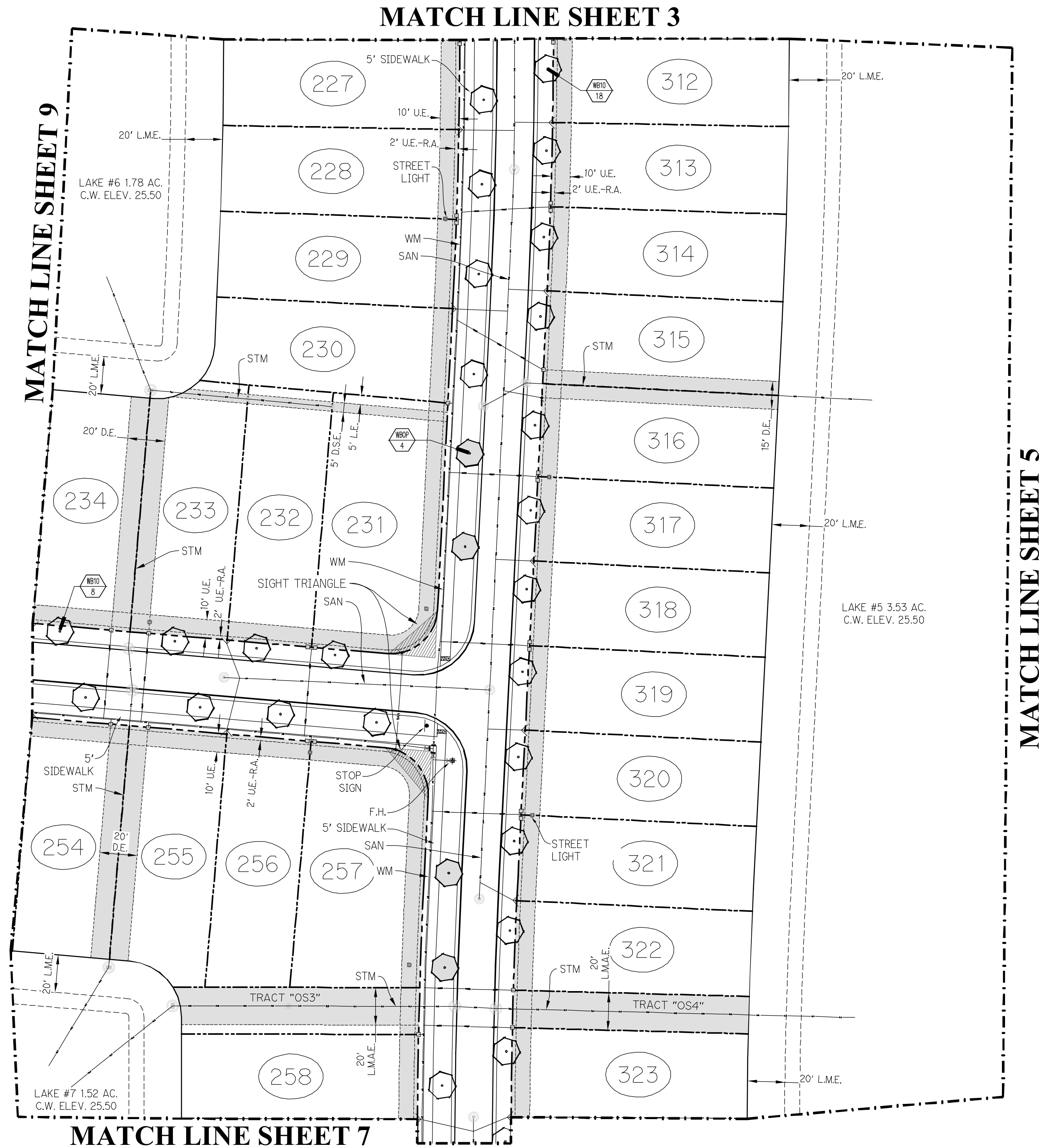
PARKER-YANNETTE
design group, inc.

LANDSCAPE ARCHITECTURE
PLANNING • GRAPHICS
825 South U.S. Highway One
Suite 330
Jupiter, Florida 33477

Telephone: (561) 747-5069
Fax: (561) 747-2041
Email: mail@pydg.com
License #LC-0000297



KEY MAP
N.T.S.



Plant List (Sheet P2-10 Only)

SYM.	QTY.	NAME	SPECIFICATIONS
PALM8			
WE10	26	Wodyetia bifurcata / Foxtail Palm	10' cl., 4" min. cal. crown shaft, straight trunk, full head, unscarred trunk, intact fronds
WDOF	4	Optional Additional Street Trees - Wodyetia bifurcata / Foxtail Palm	10' cl., 4" min. cal. crown shaft, straight trunk, full head, unscarred trunk, intact fronds

NOTE:
ALL PLANT MATERIAL SHALL MEET OR EXCEED SIZE AND CONTAINER SPECIFICATIONS IN PLANT LIST. PLANT MATERIALS NOT MEETING SPECIFICATIONS WILL BE REJECTED. CONTRACTOR TO COORDINATE AVAILABILITY ISSUES WITH OWNER PRIOR TO COMMENCING WORK.

* DENOTES NATIVE SPECIES

Symbols Legend

D.E.	DRAINAGE EASEMENT	O.E.	OVERHANG EASEMENT
L.M.E.	LAKE MAINTENANCE EASEMENT	G.E.	GRADING EASEMENT
L.M.A.E.	LAKE MAINTENANCE ACCESS EASEMENT	PSL	PORT ST LUCIE
F.O.W.	FOOT OF WALK	L.E.	LANDSCAPE EASEMENT
U.E.	UTILITY EASEMENT	D.S.E.	DRAINAGE SWALE EASEMENT
U.E.-RA	UTILITY EASEMENT - RESTRICTED AREA (SEE "U.E." PLAT DEDICATION)	O.S.	OPEN SPACE
STM	STORM SEWER LINE WITH MANHOLE	S&M	SEED & MULCH
STM	STORM SEWER LINE WITH CATCH BASIN	SIGN	SIGN
SAN	SANITARY SEWER LINE WITH MANHOLE	LOT	LOT NUMBER
WM	WATER MAIN	HYDRANT	FIRE HYDRANT
W.M.	WATER METER		
W.M.	WATER SVC. TO LOT WITH METER		
S.V.C.	SANITARY SVC. TO LOT WITH CLEANOUT		



PSLUSD # 5268B PSL PROJECT NO. P22-276

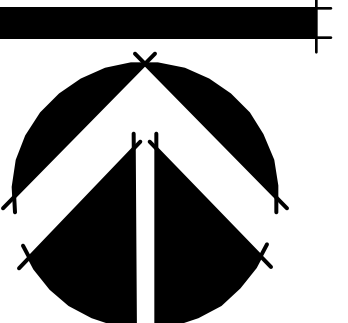
RIVERLAND - PARCEL 'D' PLAT 2

Developer: Riverland Associates III, LLLP
PORT ST. LUCIE, FLORIDA

PLANTING PLAN

DATE: 8/21/19
DRAWN BY: AJO/ITY
JOB NO.: 22-067
SCALE: 1" = 40'-0"
FILENAME: RLD 81TRP14

REVISIONS:
10/26/22 PSL Ciris
3/22/23 Resubmittal
4/4/23 Well site drainage
6/30/23 PSL Ciris



SHEET:

P2-10