

PARKER-YANNETTE  
design group, inc.

LANDSCAPE ARCHITECTURE  
PLANNING • GRAPHICS  
4425 Military Trail, Suite 202  
Jupiter, Florida 33458

Telephone: (561) 747-5069  
Fax: (561) 747-2041  
Email: mail@pydg.com  
License #LC-0001347

## Symbols Legend

D.E.	DRAINAGE EASEMENT	O.E.	OVERHANG EASEMENT
L.M.E.	LAKE MAINTENANCE EASEMENT	G.E.	GRADING EASEMENT
L.M.A.E.	LAKE MAINTENANCE ACCESS EASEMENT	PSL	PORT ST LUCIE
R.O.W.	RIGHT OF WAY	L.E.	LANDSCAPE EASEMENT
U.E.	UTILITY EASEMENT	D.S.E.	DRAINAGE SWALE EASEMENT
U.E.-R.A.	UTILITY EASEMENT - RESTRICTED AREA (SEE "U.E." PLAT DEDICATION)	O.S.	OPEN SPACE
STM	STORM SEWER LINE WITH MANHOLE	●	SIGN
STM	STORM SEWER LINE WITH CATCH BASIN	①	LOT NUMBER
SAN	SANITARY SEWER LINE WITH MANHOLE	●	FIRE HYDRANT
WM	WATER MAIN		
W.M.	WATER SVC. TO LOT WITH METER		
C.O.	SANITARY SVC. TO LOT WITH CLEANOUT		

## PSLUD Notes:

LANDSCAPE PLANS SHALL BE SUBMITTED FOR THE PROJECT INDICATING THE LOCATION OF LANDSCAPE AREAS, PERMETER WALLS, FOUNDATIONS, BERMS, TREE WELLS, FENCES, GATES, SIGNS, DECORATIVE ROCKS, SCULPTURE, FOUNTAINS, AND ANY OTHER FEATURES THAT MAY AFFECT THE LOCATION OF WATER, WASTEWATER, OR RECLAIMED WATER FACILITIES. ALSO EXISTING AND PROPOSED WATER MAINS, SANITARY FACILITIES, AND RIGHT-OF-WAY LOT LINES AND ALL EASEMENT INFORMATION SHOWING OFFICIAL RECORD BOOK AND PAGE NUMBER SHALL BE INCLUDED. THE PLANS SHALL INCLUDE AND CONFORM TO THE FOLLOWING STANDARD NOTES:

- ALL LANDSCAPING WITHIN PSLUD UTILITY EASEMENTS AND WITHIN 10' OF PSLUD INFRASTRUCTURE SHALL COMPLY WITH CHAPTER 94 OF THE CITY'S CODE OF ORDINANCES AND PSLUD UTILITY EASEMENTS.
- NO LANDSCAPING SHALL BE PLANTED IN SUCH A MANNER AS TO ADVERSELY AFFECT UTILITY INSTALLATION, OPERATION, OR MAINTENANCE.
- NO LANDSCAPING OTHER THAN 800 GRASSES MAY BE PLANTED WITHIN A 9' RADIUS MAINTENANCE AREA OF ANY PSLUD APPURTENANCE SUCH AS WATER METERS, BACKFLOW DEVICES, FIRE HYDRANTS, SANITARY SEWER CLEANOUTS, MANHOLES, AIR RELEASE VALVES, ETC. WITH THE EXCEPTION OF FOXTAIL PALMS. TREES SHALL NOT BE PLANTED WITHIN 10' OF ANY PSLUD INFRASTRUCTURE. AS SPECIFICALLY APPROVED BY THE PSLUD, FOXTAIL PALMS MAY BE A DISTANCE NOT LESS THAN SEVEN (7) FEET OF ANY PSLUD INFRASTRUCTURE. ALL MEASUREMENTS ARE FROM OUTSIDE TO OUTSIDE, NOT CENTERLINE TO CENTERLINE. EXAMPLE: OUTSIDE OF PIPE TO NEAREST POINT ON TREE TRUNK.
- TREES SHALL NOT BE PLANTED WITHIN TEN (10) FEET OF ANY PSLUD MAINS OR APPURTENANCES (UNLESS OTHERWISE APPROVED BY PSLUD).
- UTILITY & DRAINAGE EASEMENTS TO REMAIN CLEAR OF TREES UNLESS OTHERWISE APPROVED BY THE EASEMENT HOLDER.

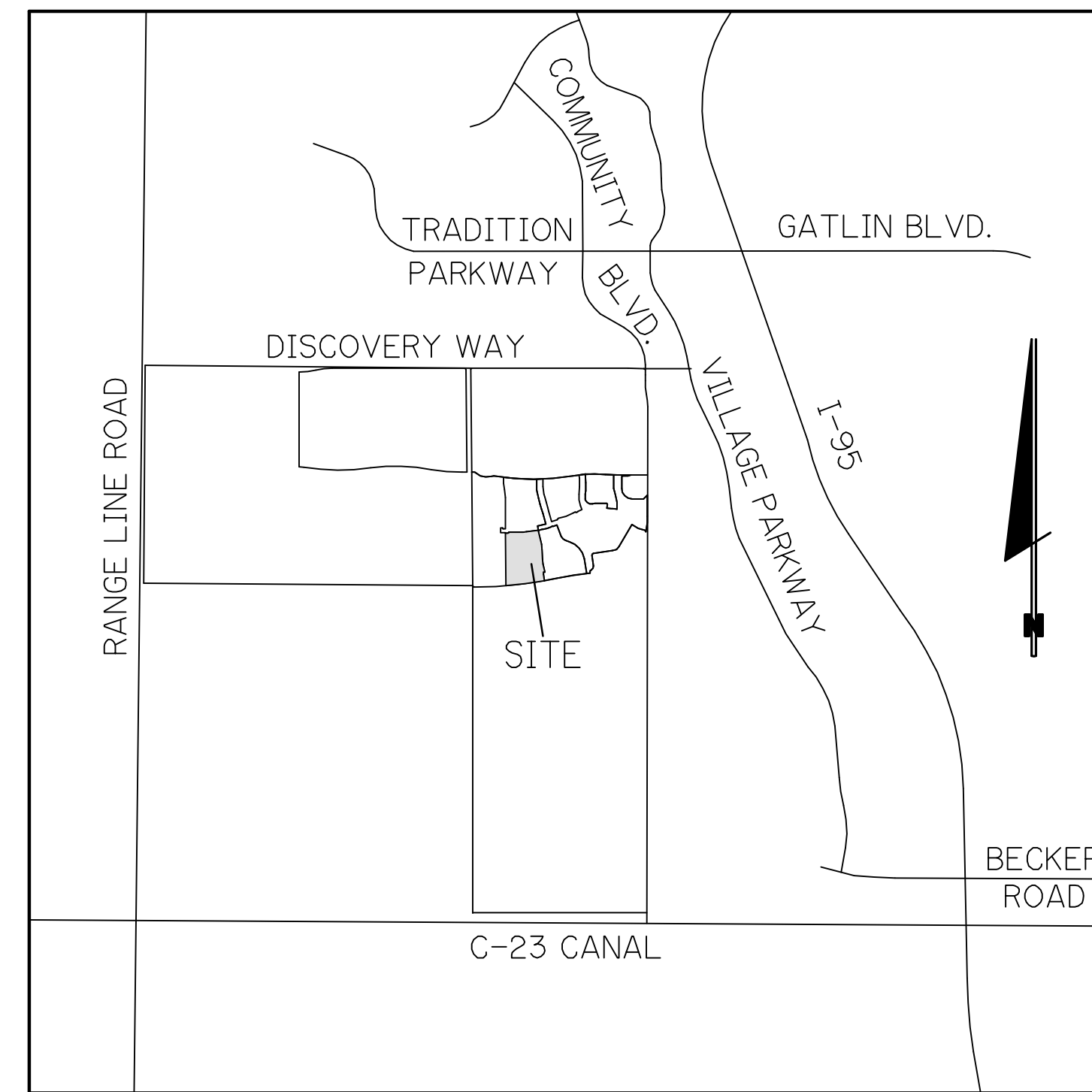
## General Notes:

- ALL PLANT MATERIAL TO BE FLORIDA NO. 1 (OR BETTER) AND SHALL MEET OR EXCEED MINIMUM STANDARDS SET FORTH IN FLORIDA GRASSES AND STANDARDS, CURRENT EDITION.
- A MINIMUM 50% OF ALL REQUIRED TREES (75% OF ALL 8-10" DBH) SHALL BE NATIVE SPECIES. THIS CRITERIA SHALL NOT APPLY TO REQUIRED STREET TREES.
- A MAXIMUM OF 20% OF REQUIRED TREES MAY BE SUBSTITUTED WITH PALMS.
- TREES ARE TO BE INSTALLED WITH A TEN FOOT (10') MINIMUM SEPARATION FROM ANY UNDERGROUND PIPE (WATER, SEWER OR RECLAIM MAINS) AND/OR SERVICES, HYDRANTS, LIFT STATIONS, AND DRAINAGE CULVERTS OR BASINS. IN NO CASE SHALL A TREE ENCLOSED INTO A PSLUD WITHOUT PRIOR PSLUD APPROVAL. ONLY 800 CAN BE INSTALLED WITHIN 5' OF A FIRE HYDRANT. SEE PSLUD NOTES FOR ADDITIONAL INFORMATION.
- STREET TREES SHOWN HEREON ARE CONCEPTUAL IN NATURE AND MAY BE FIELD ADJUSTED TO MAINTAIN PROPER CLEARANCE FROM REQUIRED IMPROVEMENTS INCLUDING DRIVEWAYS. TREES TO BE INSTALLED WITH A MINIMUM TEN FOOT (10') SEPARATION FROM ANY UNDERGROUND UTILITY UNLESS OTHERWISE APPROVED.
- PER PSLUD CODE OF ORDINANCES SECTION 94.004 PLANTING LOCATED WITHIN THE 20' SAFE SIGHT TRIANGLE AT INTERSECTIONS (OR TEN (10) FEET FROM THE EDGE OF A DRIVEWAY OR ALLEY) MUST MAINTAIN A CLEAR ZONE BETWEEN TWO (2) AND SIX (6) FEET FROM THE CROWN OF ROAD.
- THE HOA AND ITS SUCCESSORS AND ASSIGNS SHALL ENSURE THAT REGULAR MAINTENANCE IS PERFORMED ON ALL ROYAL PALMS AND COCONUT PALMS AS SHOWN HEREIN TO A LEVEL THAT SIGNIFICANTLY REDUCES THE LIKELIHOOD OF ANY INDIVIDUAL OR COLLECTIVE PARTY(IES) WHICH MAY CAUSE INJURY OR DAMAGE FROM FALLING INTO A ROAD RIGHT-OF-WAY OR ONTO ANY PEDESTRIAN OR VEHICLE USE AREA.
- ALL LANDSCAPED AREAS REQUIRING IRRIGATION SHALL BE PROVIDED WITH A FULLY AUTOMATED IRRIGATION SYSTEM THAT PROVIDES 100 PERCENT COVERAGE WITH 100 PERCENT OVERLAP WITH A MINIMUM DESIGN DISTRIBUTION UNIFORMITY (DU) OF 70.
- ATTENTION LANDSCAPE CONTRACTOR: TREES PLANTED IN LOCATIONS OTHER THAN THOSE SHOWN MAY INTERFERE WITH UNDERGROUND PIPE - BEFORE CHANGING LOCATIONS, VERIFY AND PROVIDE ROOT BARRIERS AS SPECIFIED ON DETAILS SHEET OR ELIMINATE TREE AS DEEMED NECESSARY. CONFLICTS REQUIRING DEVIATION FROM PLANS MUST BE BROUGHT TO THE ATTENTION OF THE LANDSCAPE ARCHITECT OF RECORD.
- QUANTITIES ON PLANT LIST ARE FOR CONVENIENCE ONLY. THE LANDSCAPE CONTRACTOR IS RESPONSIBLE FOR ALL PLANTS SHOWN ON PLANTING PLANS. WHEN DISCREPANCIES OCCUR BETWEEN PLANT LIST AND PLANTING PLANS, THE PLANTS ARE TO OVERRIDE THE PLANT LIST IN ALL CASES.
- ALL LANDSCAPING SHALL BE KEPT IN A HEALTHY GROWING CONDITION AT ALL TIMES.

THE LOCATIONS OF TREES AS SHOWN ON THESE PLANS ARE APPROXIMATE. THE FINAL LOCATIONS MAY BE FIELD ADJUSTED TO ACCOMMODATE UNFORSEEN FIELD CONDITIONS TO COMPLY WITH SAFETY SETBACKS, AVOID UTILITIES, OR AS OTHERWISE DIRECTED OR APPROVED BY THE LANDSCAPE ARCHITECT. THE CONTRACTOR SHALL FLAG ALL TREE LOCATIONS FOR THE APPROVAL OF THE LANDSCAPE ARCHITECT PRIOR TO PLANTING.

# RIVERLAND - PARCEL 'B'

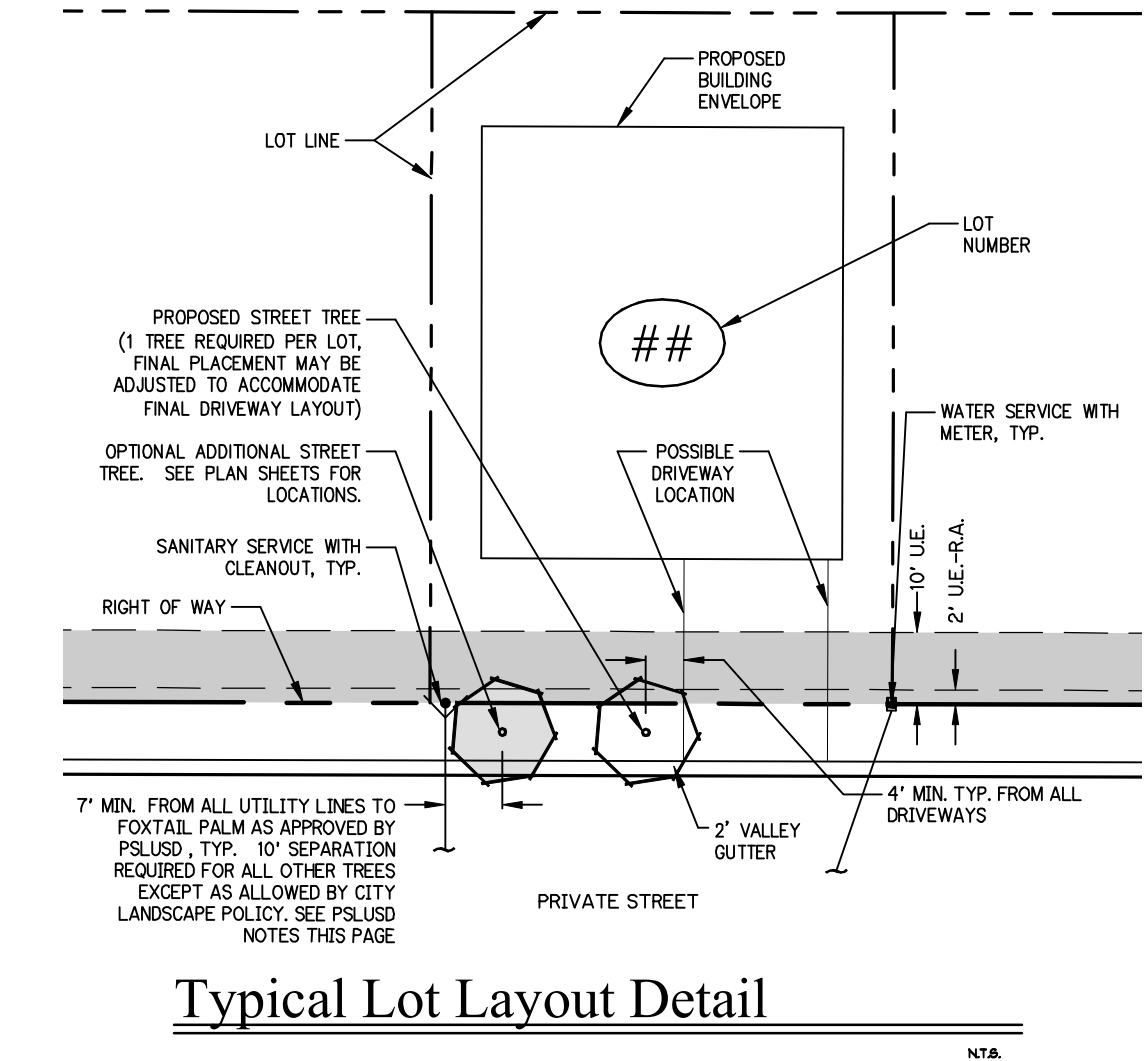
## (RIVERLAND MPUD) LANDSCAPE PLANS PLAT SIX



LOCATION MAP  
N.T.S.

## Sheet Index

P6-1 Cover Sheet, Index, General Notes, and Planting Details  
P6-2 thru P6-7 Plat Six Landscape Plans



Typical Lot Layout Detail  
N.T.S.

## Plant Specifications

SPECIES AND SIZE shall conform to those indicated on the drawings. Nomenclature shall conform to STANDARDIZED PLANT NAMES, current edition. All nursery stock shall be in accordance with Florida Grades and Standards for Nursery Plants, latest edition published by the Florida Department of Agriculture and Consumer Services. All plants not otherwise specified as being Florida Fancy or Specimen, shall be Florida Grade Number 1 or better as determined by the Florida Division of Plant Industry. Specimen means an exceptionally heavy, symmetrical, tightly knit plant, so trained or favored in its development that first appearance is unquestionable and outstandingly superior in form, number of branches, compactness and symmetry.

### GENERAL REQUIREMENTS

All plants shall be freshly dug, sound, healthy, vigorous, well branched, and free of disease and insect eggs and larvae, and shall have adequate root systems. Trees for planting rows shall be uniform in size and shape. All materials shall be subject to approval by the Landscape Architect. Where any requirements are omitted from the plant list, the plants furnished shall be normal for the variety. Plants shall be pruned prior to delivery only upon the approval of the Landscape Architect.

### CONTAINER GROWN STOCK

All container grown material shall be healthy, vigorous, well rooted plants, and established in the container in which they are sold. The plants shall have tops which are good quality and in a healthy growing condition. An established container grown plant shall be grown in that container sufficiently long enough for the new fibrous roots to have developed so that the root mass will retain its shape and hold together when removed from the container. Plant root bound in containers are unacceptable.

### MEASUREMENTS

- Trees:** Height shall be measured from ground to the top most portion of the tree. Small, multi-trunked trees are measured to the top of main body of the crown. Spread shall be measured to the end of branching equally around the crown from the center of the trunk. Measurements are not to include any terminal growth. Single trunk trees shall be free of "Y" crotches that could be points of weak limb structure or disease infestation.
- Shrubs:** Heights shall be measured from the ground to the average points where mature plant growth stops. Spread shall be measured to the end of branching equally around the shrub mass. Measurements are not to include any terminal growth.
- Palms:** Clear Trunk (CT), shall be measured from the ground at the time of installation to the point where the mature aged trunk joins the immature or green portion of the trunk or the head.
- Overall height (OH), shall be measured from the ground at the time of installation to a point three quarters the length of the unopened bud. Palms with tapered or banded trunks will not be accepted.

### SOIL

Planting soil for use in preparing backfill for plant pits shall be free from heavy clay, stones, lime, plants, roots or other foreign materials or noxious grasses (such as Bermuda or nut grass) and noxious weeds. It shall not contain toxic substances which may be harmful to plant growth.

### COMMERCIAL FERTILIZER

Two fertilizer shall be used in all types of plantings, except palms. Granular fertilizer shall be uniform in composition, dry and free flowing. This fertilizer shall be delivered to the site in the original unopened bags, each bearing the manufacturer's statement of analysis, and shall meet the following requirements: sixteen (16%) percent nitrogen, seven (7%) percent phosphorus, twelve (12%) percent potassium, plus iron. Tablet fertilizer ("Agriform" or equal) in 2 1/2 gram size shall meet the following requirements: twenty (20%) percent nitrogen, ten (10%) percent phosphorus, five (5%) percent potassium.

The two fertilizers will be applied at the following rates:

PLANT SIZE	16-1-12	"AGRIFORM" TABLET (2 Grams)
1 gal.	1/4 lb.	1
3 gal.	1/3 lb.	2
7-15 gal.	1/2 lb.	4
1'-6" caliper	2 lbs/1" caliper	2 1/2" caliper
6" and larger	3 lbs/1" caliper	2 1/2" caliper

"Florida East Coast Palm Special" will be applied to all palms at installation at a rate of 1/2 lb. per inch of trunk caliper unless otherwise specified.

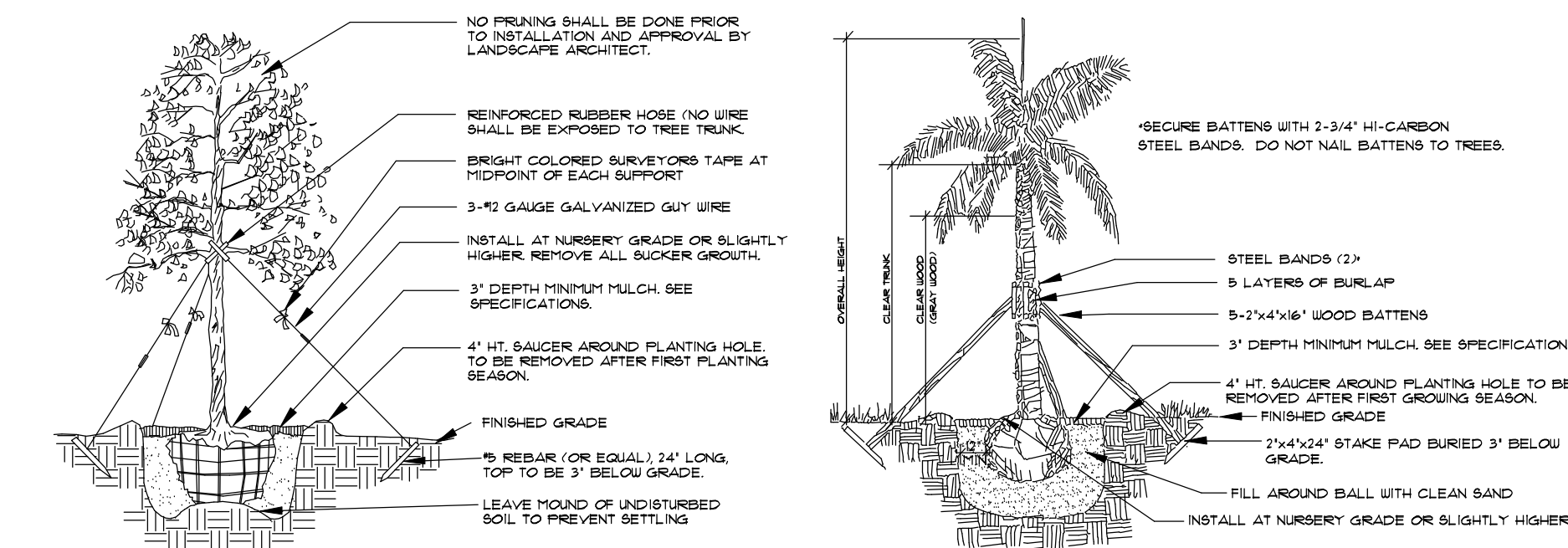
### MULCH

Mulch material shall be two (2) inches of shredded Class "A" mulch (sterilized and free of seeds), moistened at the time of application to prevent wind displacement. See plant list for specification.

### SUBSTITUTIONS

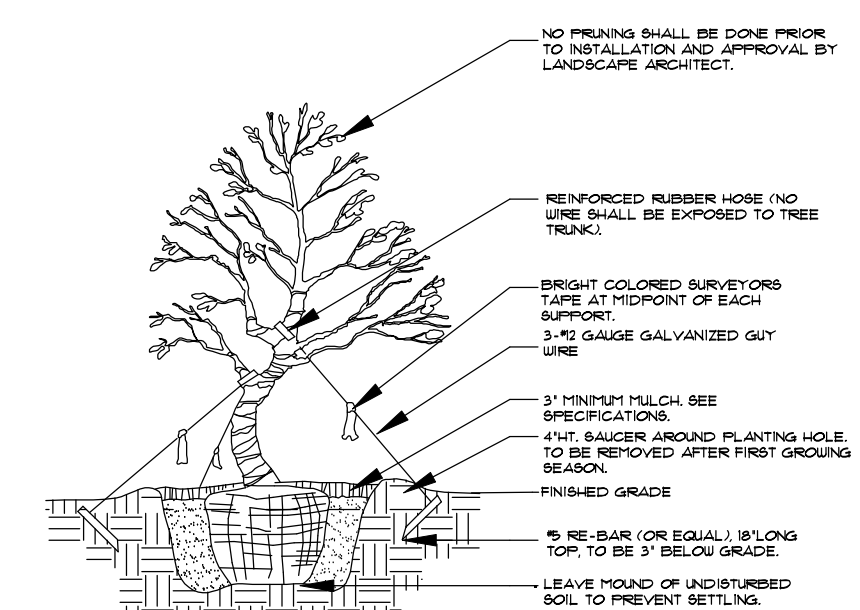
No substitutions of plant material types or size will be allowed without written consent of the Landscape Architect. B.E.B. material will not be accepted as substitute for container grown material unless previously approved. Alternate substitutions shall be indicated in bid.

## Planting Details



### Tree Planting

- SEE SPECIFICATIONS FOR BACKFILL MIXTURE AND FERTILIZATION.
- BRACINGS - SPECIAL SITE CONDITIONS MAY REQUIRE MODIFICATION TO BRACING TECHNIQUE. LANDSCAPE CONTRACTOR SHALL ADEQUATELY BRACE (OR WIRE) ALL TREES TO PREVENT EXCESSIVE MOVEMENT & MAINTAIN A VERTICAL POSITION.

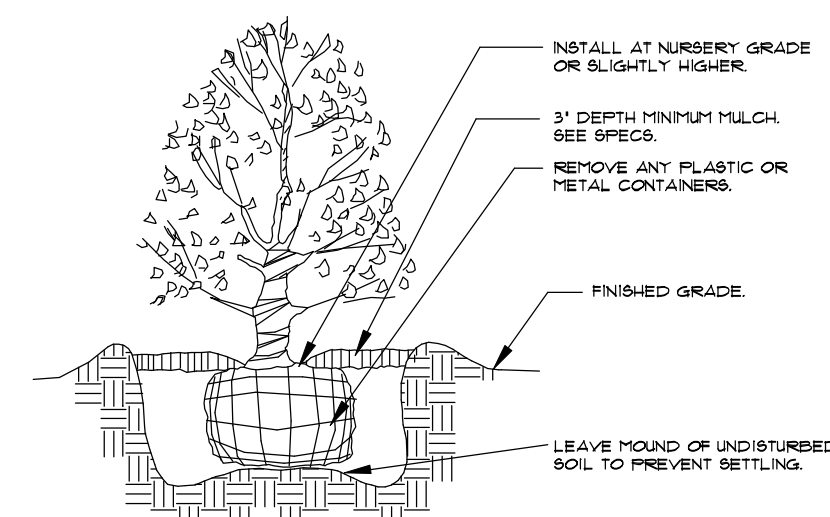


### Irregular & Multi-Stem Tree Planting

- FOR TREES 6'-14' HT.
- SEE SPECIFICATIONS FOR BACKFILL MIXTURE AND FERTILIZATION.
- BRACINGS - SPECIAL SITE CONDITIONS MAY REQUIRE MODIFICATION TO BRACING TECHNIQUE. LANDSCAPE CONTRACTOR SHALL ADEQUATELY BRACE (OR WIRE) ALL TREES TO PREVENT EXCESSIVE MOVEMENT & MAINTAIN A VERTICAL POSITION.

### Palm Planting

- APPLIES TO: ROYAL PALMS, QUEEN PALMS, ALEXANDER PALMS, FOXTAIL PALMS.
- SEE SPECIFICATIONS FOR BACKFILL MIXTURE AND FERTILIZATION.
- BRACINGS - SPECIAL SITE CONDITIONS MAY REQUIRE MODIFICATION TO BRACING TECHNIQUE. LANDSCAPE CONTRACTOR SHALL ADEQUATELY BRACE ALL PALMS TO PREVENT EXCESSIVE MOVEMENT AND MAINTAIN A VERTICAL POSITION.



### Shrub Planting

- SEE SPECIFICATIONS FOR BACKFILL MIXTURE AND FERTILIZATION.

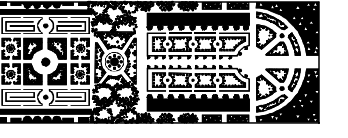
**RIVERLAND - PARCEL 'B'**  
 Developer: Riverland Associates II, LLLP  
 PORT ST. LUCIE, FLORIDA  
**PLAT SIX COVER SHEET**

DATE: 8/21  
DRAWN BY: AJO  
JOB NO.: 21-001  
SCALE: N/A  
FILENAME: Rvr Parcel B

REVISIONS:  
8/21  
8/23/21 Est. at Lot 511  
11/20/21 Drainage updates

PLAT SIX  
COVER SHEET

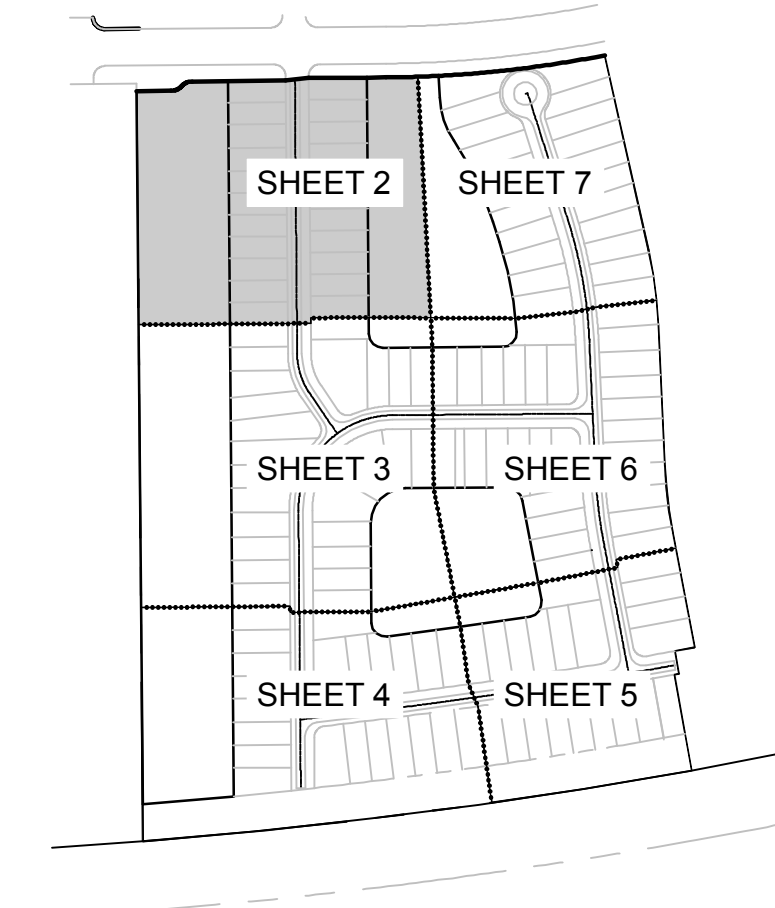
SHEET:  
**P6-1**



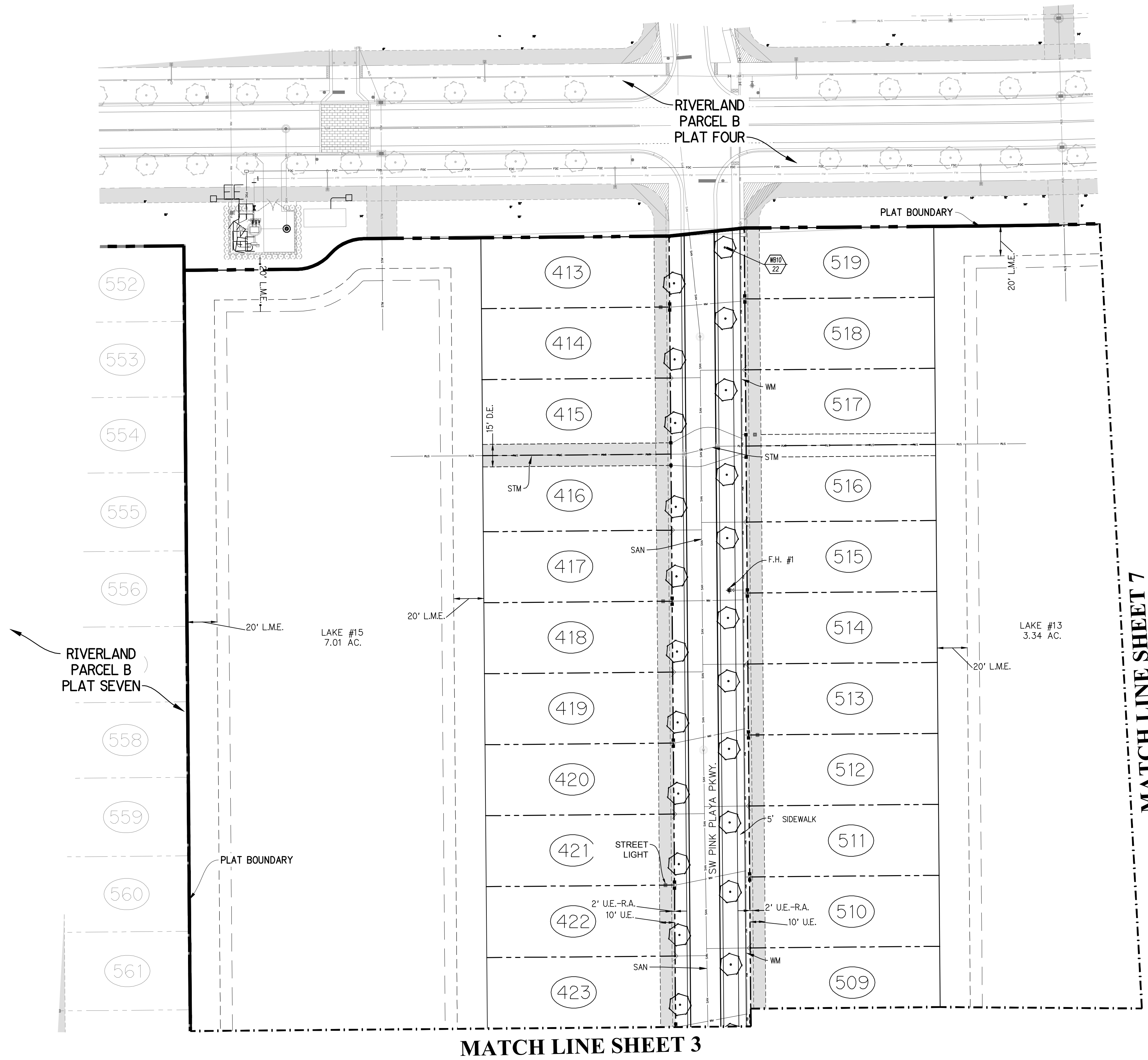
PARKER-YANNETTE  
design group, inc.

LANDSCAPE ARCHITECTURE  
PLANNING • GRAPHICS  
4425 Military Trail, Suite 202  
Jupiter, Florida 33458

Telephone: (561) 747-5069  
Fax: (561) 747-2041  
Email: mail@pydg.com  
License #LC-0001347



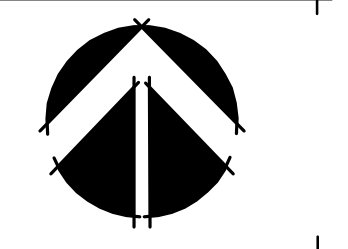
KEY MAP  
N.T.S.



**RIVERLAND - PARCEL 'B'**  
Developer: Riverland Associates II, LLLP  
PORT ST. LUCIE, FLORIDA  
PLAT SIX STREET TREE PLAN

DATE: 6/22/11  
DRAWN BY: AJO  
JOB NO.: 21-081  
SCALE: 1" = 40'-0"  
FILENAME: Rvr Parcel B

REVISIONS:  
8/2/11  
8/23/11  
10/25/11 Est. at Lot 511  
11/30/11 Drainage updates



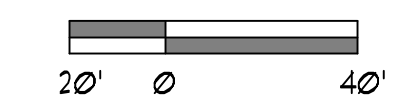
PLAT SIX  
STREET TREE  
PLAN

SHEET:  
**P6-2**

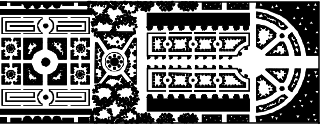
**Plant List** (Sheet P6-2 Only)

SYM	QTY	NAME	SPECIFICATIONS
PALM15			
UE10	22	Wodyetia bifurcata / Foxtail Palm	10' c.t., straight trunk, full head, unscarred trunk, intact fronds

NOTE:  
ALL PLANT MATERIAL SHALL MEET OR EXCEED SIZE AND CONTAINER SPECIFICATIONS IN PLANT LIST. PLANT MATERIALS NOT MEETING SPECIFICATIONS WILL BE REJECTED. CONTRACTOR TO COORDINATE AVAILABILITY ISSUES WITH OWNER PRIOR TO COMMENCING WORK.  
\* DENOTES NATIVE SPECIES



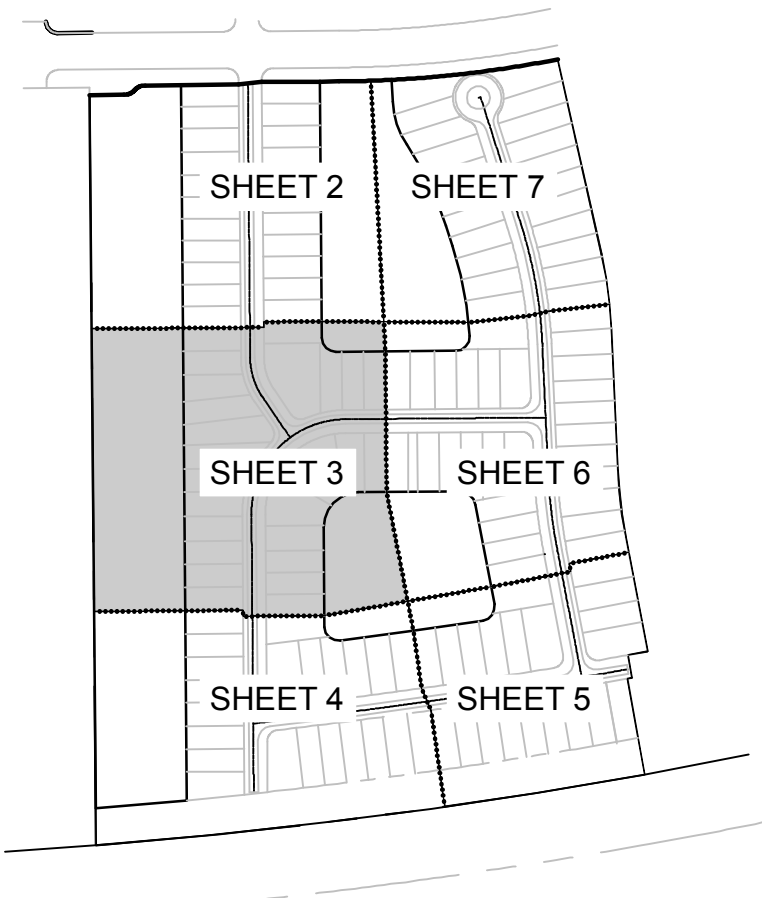
PSL PROJECT NO. P21-138



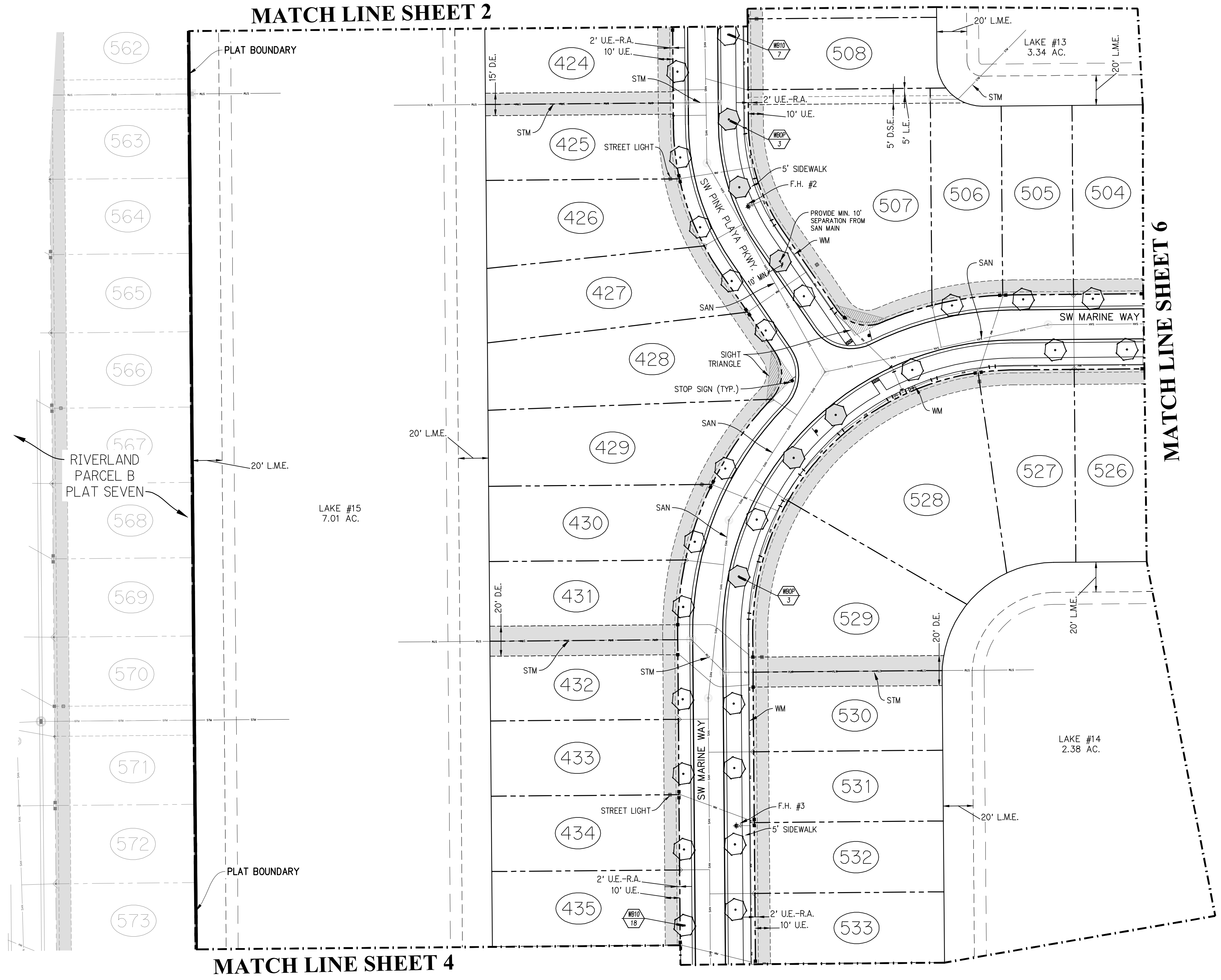
PARKER-YANNETTE  
design group, inc.

LANDSCAPE ARCHITECTURE  
PLANNING • GRAPHICS  
4425 Military Trail, Suite 202  
Jupiter, Florida 33458

Telephone: (561) 747-5069  
Fax: (561) 747-2041  
Email: mail@pydg.com  
License #LC-0001347



KEY MAP  
N.T.S.



MATCH LINE SHEET 2

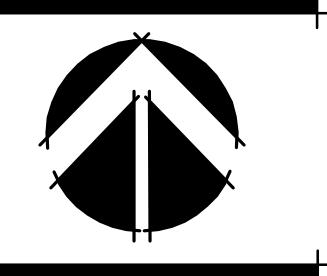
MATCH LINE SHEET 6

MATCH LINE SHEET 4

**RIVERLAND - PARCEL 'B'**  
Developer: Riverland Associates II, LLLP  
PORT ST. LUCIE, FLORIDA  
**PLAT SIX STREET TREE PLAN**

DATE: 6/22/11  
DRAWN BY: AJO  
JOB NO.: 21-081  
SCALE: 1" = 40'-0"  
FILENAME: Rvr Parcel B

REVISIONS:  
8/2/11  
8/23/11  
10/5/11 Est. at Lot 511  
11/30/11 Drainage updates

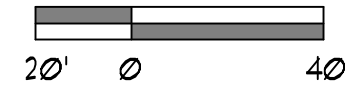


**Plant List** (Sheet P6-3 Only)

SYM	QTY	NAME	SPECIFICATIONS
<b>PALMS</b>			
WB10	25	Wodyetia bifurcata / Foxtail Palm	10' ct., straight trunk, full head, unscarred trunk, intact fronds
WB0P	6	Optional Additional Street Tree - Wodyetia bifurcata / Foxtail Palm	10' ct., straight trunk, full head, unscarred trunk, intact fronds

**NOTE:**  
ALL PLANT MATERIAL SHALL MEET OR EXCEED SIZE AND CONTAINER SPECIFICATIONS IN PLANT LIST. PLANT MATERIALS NOT MEETING SPECIFICATIONS WILL BE REJECTED. CONTRACTOR TO COORDINATE AVAILABILITY ISSUES WITH OWNER PRIOR TO COMMENCING WORK.

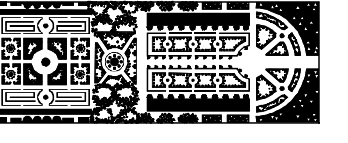
\* DENOTES NATIVE SPECIES



PSL PROJECT NO. P21-138

PLAT SIX  
STREET TREE  
PLAN

SHEET:  
**P6-3**

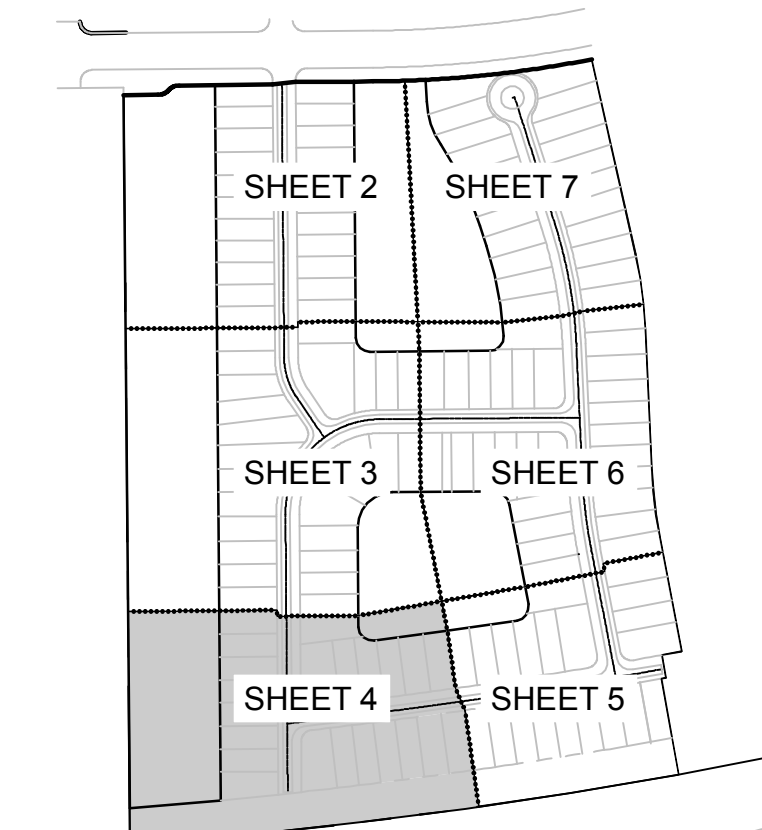
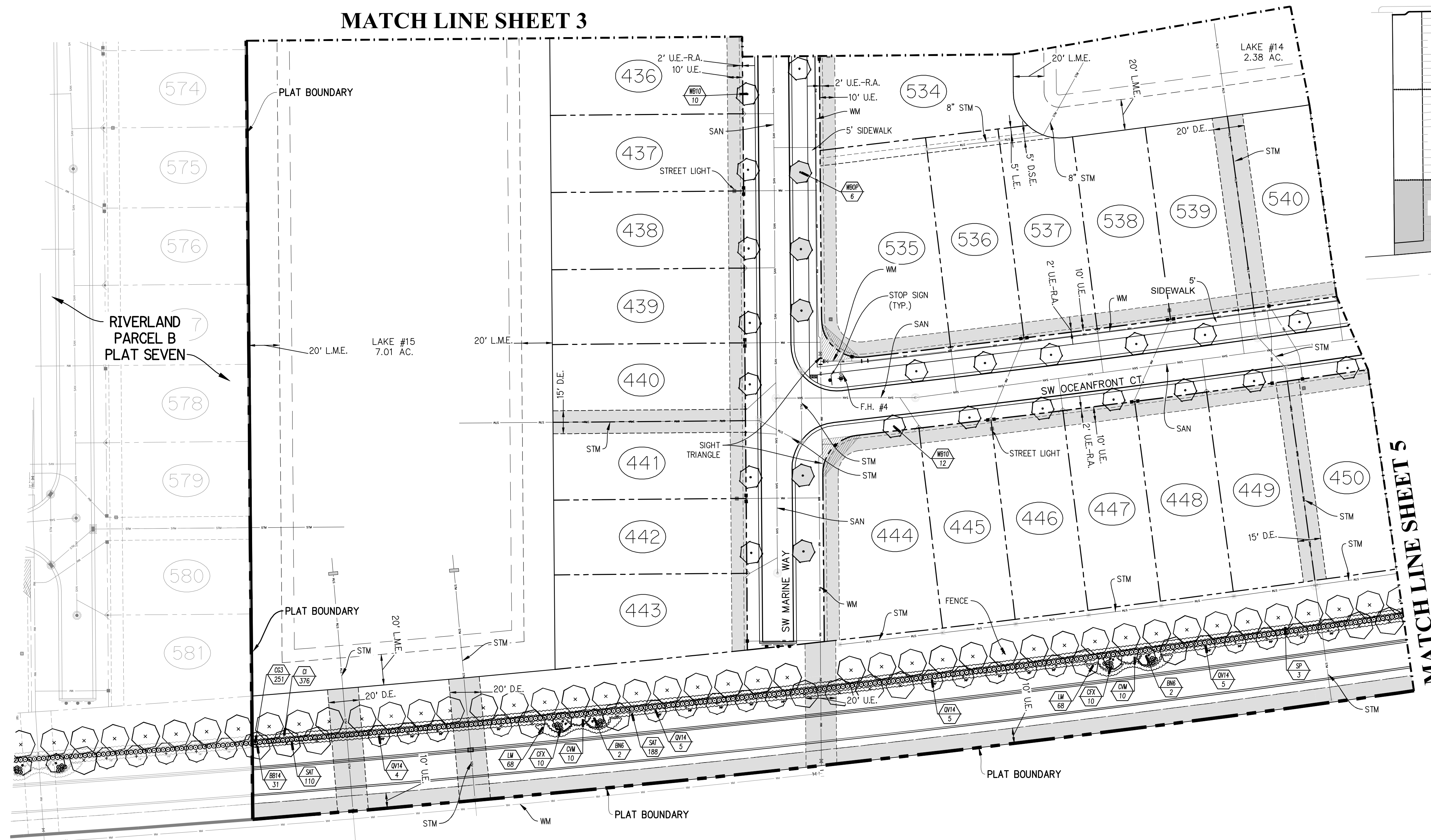


PARKER-YANNETTE  
design group, inc.

LANDSCAPE ARCHITECTURE  
PLANNING • GRAPHICS  
4425 Military Trail, Suite 202  
Jupiter, Florida 33458

Telephone: (561) 747-5069  
Fax: (561) 747-2041  
Email: mail@pydg.com  
License #LC-0001347

MATCH LINE SHEET 3



KEY MAP  
N.T.S.

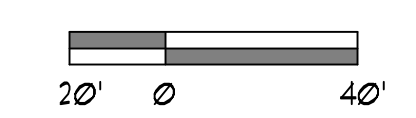
RIVERLAND - PARCEL 'B'  
Developer: Riverland Associates II, LLLP  
PORT ST. LUCIE, FLORIDA  
PLAT SIX STREET TREE PLAN

SW MARSHALL PARKWAY  
(E/W #3)

Plant List (Sheet P6-4 Only)

SYM	QTY	NAME	SPECIFICATIONS
<b>TREES</b>			
<b>PALMS</b>			
BN6	4	Bismarckia nobilis 'Silver' / Silver Bismarck Palm	6' c.t., heavy cal., full frond
* SP	9	Sabal palmetto / Cabbage Palm	10' - 22' c.t. hts., staggered hts., hurricane cut, straight trunk, slick
WB10	22	Wodyetia bifurcata / Foxtail Palm	10' c.t., straight trunk, full head, unscarred trunk, intact fronds
WBOP	6	Optional Additional Street Trees - Wodyetia bifurcata / Foxtail Palm	10' c.t., straight trunk, full head, unscarred trunk, intact fronds
<b>SHRUBS, ACCENTS, AND GROUNDCOVER</b>			
CFX	20	Cordyline fruticosa 'Xerox'	3 gal., 22" x 20", full
CG3	251	Clusia guttifera / Small Leaf Clusia	1 gal., 3" x 2", full to base
CI	376	Chrysobalanus icaco / Cocoplum	3 gal., 20" x 20", full to base
CVM	20	Codiaeum variegatum 'Mammy'	3 gal., 20" x 18", full
LM	136	Liriope muscari 'Super Blue'	1 gal., 12" x 14", full, 18" o.c.
SAT	298	Schefflera arboricola 'Trinette' / Variegated Dwarf Schefflera	3 gal., 22" x 20", full

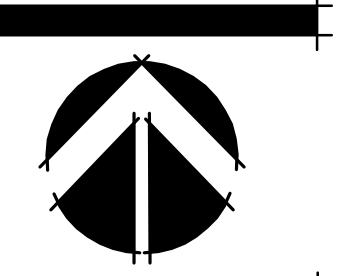
NOTE:  
ALL PLANT MATERIAL SHALL MEET OR EXCEED SIZE AND CONTAINER SPECIFICATIONS IN PLANT LIST. PLANT MATERIALS NOT MEETING SPECIFICATIONS WILL BE REJECTED. CONTRACTOR TO COORDINATE AVAILABILITY ISSUES WITH OWNER PRIOR TO COMMENCING WORK.  
\* DENOTES NATIVE SPECIES



PSL PROJECT NO. P21-138

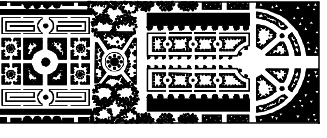
DATE: 6/22/11  
DRAWN BY: AJO  
JOB NO.: 21-081  
SCALE: 1" = 40'-0"  
FILENAME: Rvr Parcel B

REVISIONS:  
8/12/11  
8/23/11  
10/25/11 Est. at Lot 511  
11/30/11 Drainage updates



PLAT SIX  
STREET TREE  
PLAN

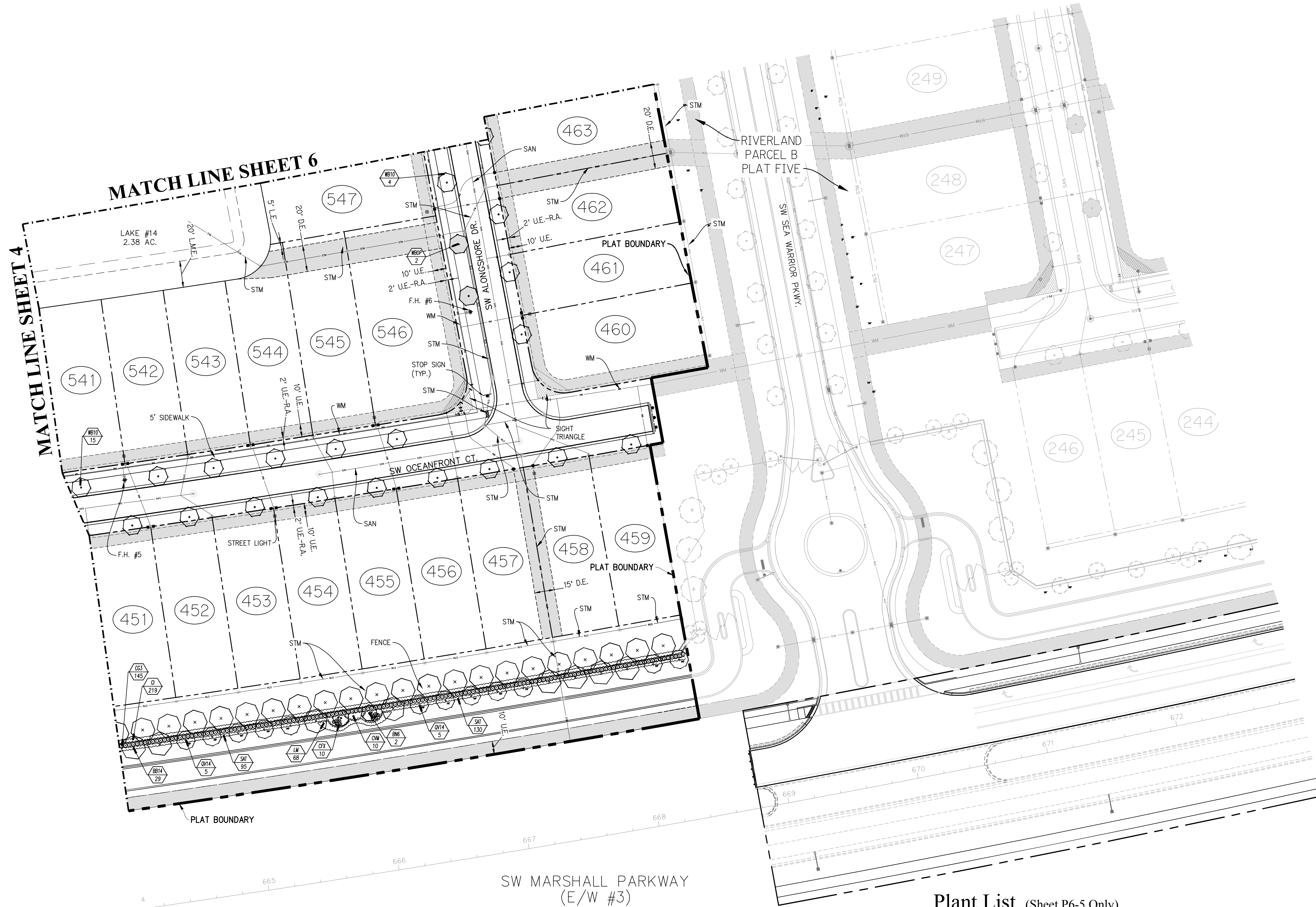
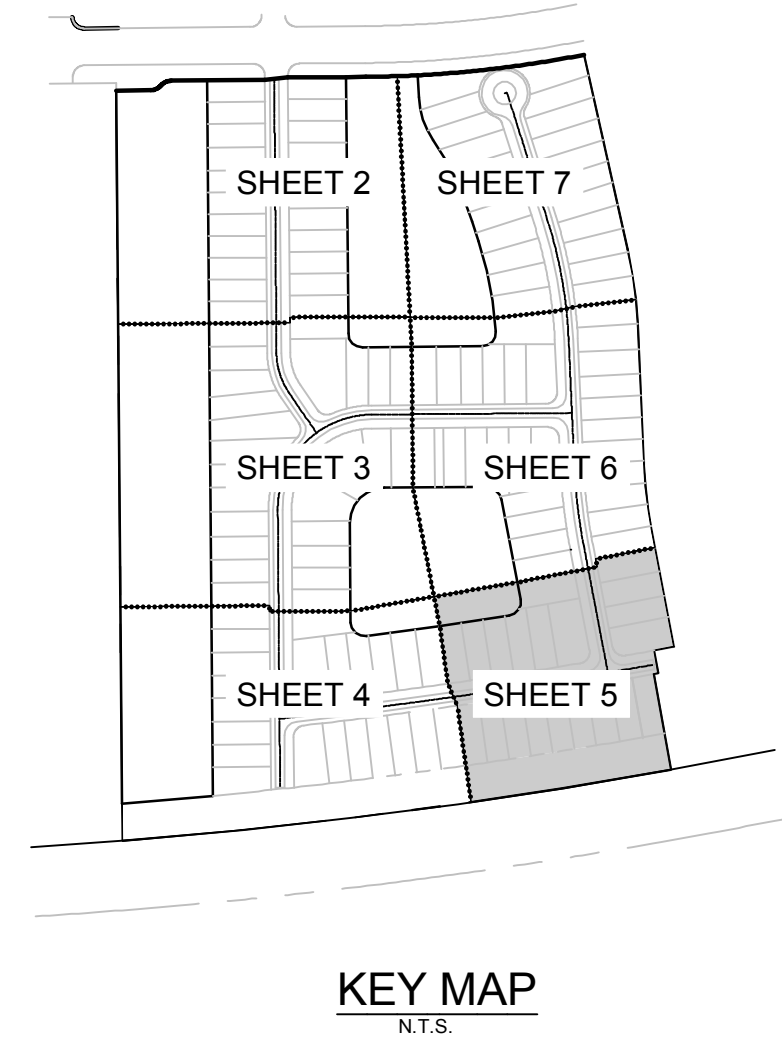
SHEET:  
P6-4



**PARKER-YANNETTE**  
design group, inc.

LANDSCAPE ARCHITECTURE  
PLANNING • GRAPHICS  
4425 Military Trail, Suite 202  
Jupiter, Florida 33458

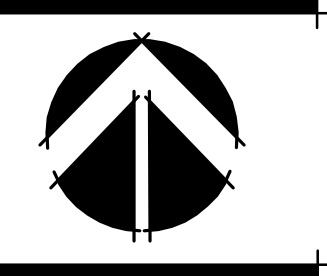
Telephone: (561) 747-5069  
Fax: (561) 747-2041  
Email: mail@pydg.com  
License #LC-0001347



**RIVERLAND - PARCEL 'B'**  
Developer: Riverland Associates II, LLLP  
PORT ST. LUCIE, FLORIDA  
PLAT SIX STREET TREE PLAN

DATE: 6/21  
DRAWN BY: AJO  
JOB NO.: 21-091  
SCALE: 1" = 40'-0"  
FILENAME: Rvr Parcel B

REVISIONS:  
8/12/21  
8/23/21  
10/15/21 Est. at Lot 511  
11/30/21 Drainage updates



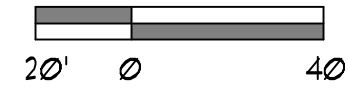
PLAT SIX  
STREET TREE  
PLAN

SHEET:  
**P6-5**

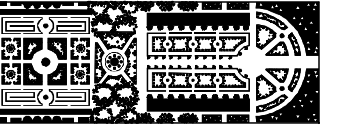
**Plant List (Sheet P6-5 Only)**

SYM	QTY	NAME	SPECIFICATIONS
<b>TREES</b>			
BB14	25	Bucida buceras 'Shady Lady'	14' x 1", 3" cal., straight trunk, full canopy
* QV14	10	Quercus virginiana / Live Oak	14' x 1", 3" cal., straight trunk, full canopy
<b>PALMS</b>			
BN6	2	Bismarckia nobilis 'Silver' / Silver Bismarck Palm	6' c.t., heavy cal., full frond
WB10	19	Wodyetia bifurcata / Foxtail Palm	10' c.t., straight trunk, full head, unscarred trunk, intact fronds
WBOP	2	Optional Additional Street Tree - Wodyetia bifurcata / Foxtail Palm	10' c.t., straight trunk, full head, unscarred trunk, intact fronds
<b>SHRUBS, ACCENTS, AND GROUNDCOVER</b>			
CFX	10	Cordyline fruticosa 'Xerox'	3 gal., 22" x 20", full
CG3	145	Clusia guttifera / Small Leaf Clusia	1 gal., 3" x 2", full to base
CI	219	Chrysobalanus icaco / Coccolup	3 gal., 20" x 18", full to base
CV1	10	Codiaeum variegatum 'Mammy'	3 gal., 20" x 18", full
LM	68	Liriope muscari 'Super Blue'	1 gal., 12" x 14", full, 18" o.c.
SAT	225	Schefflera arboricola 'Trinette' / Variegated Dwarf Schefflera	3 gal., 22" x 20", full

**NOTE:**  
ALL PLANT MATERIAL SHALL MEET OR EXCEED SIZE AND CONTAINER SPECIFICATIONS IN PLANT LIST. PLANT MATERIALS NOT MEETING SPECIFICATIONS WILL BE REJECTED. CONTRACTOR TO COORDINATE AVAILABILITY ISSUES WITH OWNER PRIOR TO COMMENCING WORK.  
\* DENOTES NATIVE SPECIES



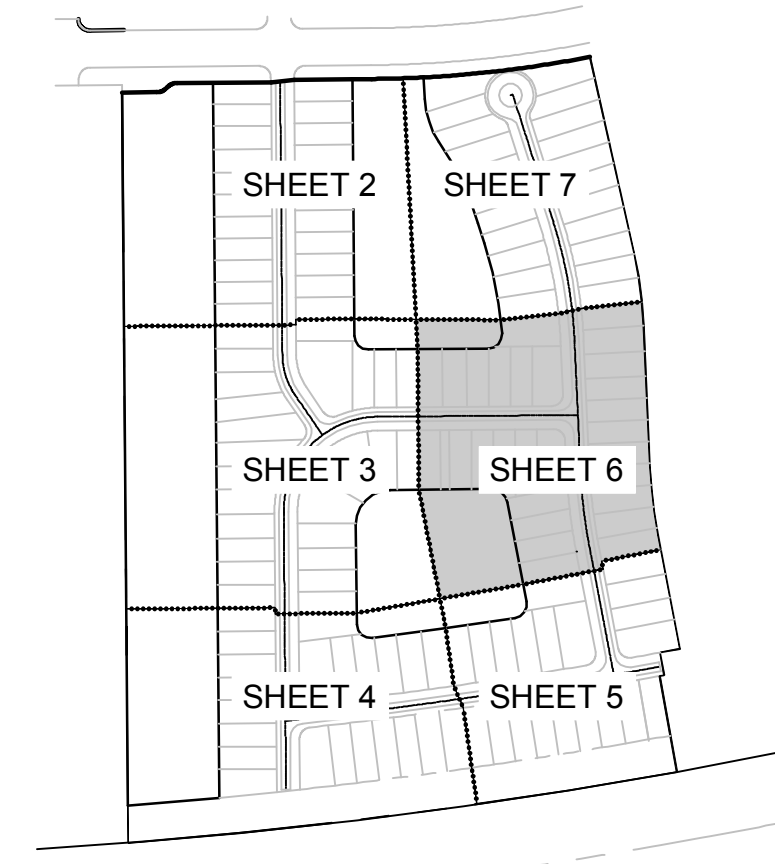
PSL PROJECT NO. P21-138



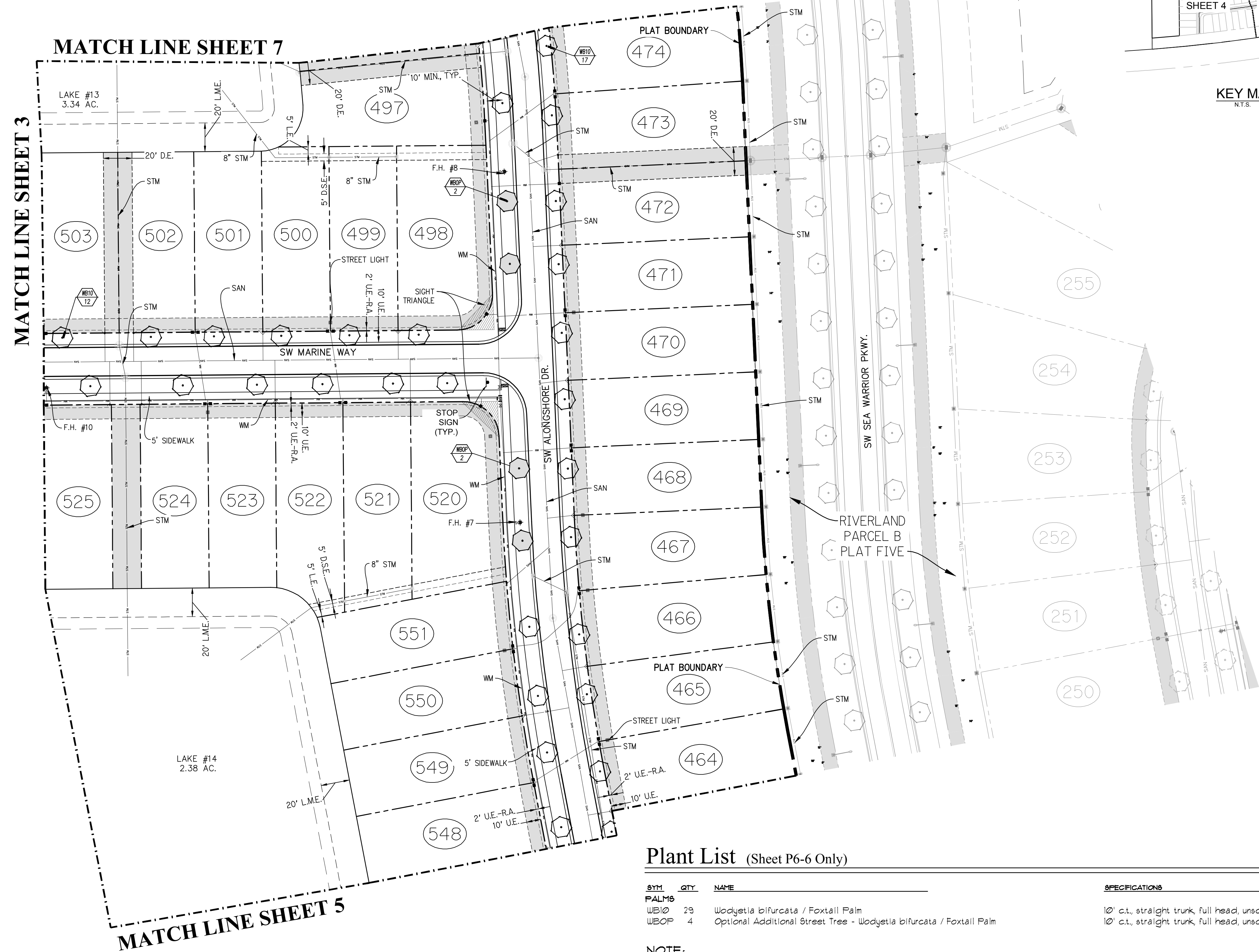
PARKER-YANNETTE  
design group, inc.

LANDSCAPE ARCHITECTURE  
PLANNING • GRAPHICS  
4425 Military Trail, Suite 202  
Jupiter, Florida 33458

Telephone: (561) 747-5069  
Fax: (561) 747-2041  
Email: mail@pydg.com  
License #LC-0001347



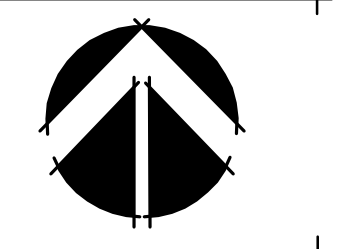
KEY MAP  
N.T.S.



**RIVERLAND - PARCEL 'B'**  
Developer: Riverland Associates II, LLLP  
PORT ST. LUCIE, FLORIDA  
PLAT SIX STREET TREE PLAN

DATE: 6/22/11  
DRAWN BY: AJO  
JOB NO.: 21-081  
SCALE: 1" = 40'-0"  
FILENAME: Rvr Parcel B

REVISIONS:  
8/22/11  
8/23/11 Est. at Lot 511  
11/30/11 Drainage updates



**Plant List** (Sheet P6-6 Only)

SYM	QTY	NAME	SPECIFICATIONS
<b>PALMS</b>			
WB10	29	Wodyetia bifurcata / Foxtail Palm	10' c.t., straight trunk, full head, unscarred trunk, intact fronds
WB0P	4	Optional Additional Street Trees - Wodyetia bifurcata / Foxtail Palm	10' c.t., straight trunk, full head, unscarred trunk, intact fronds

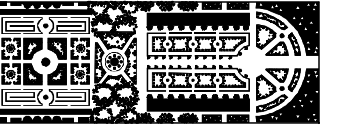
NOTE:  
ALL PLANT MATERIAL SHALL MEET OR EXCEED SIZE AND CONTAINER SPECIFICATIONS IN PLANT LIST. PLANT MATERIALS NOT MEETING SPECIFICATIONS WILL BE REJECTED. CONTRACTOR TO COORDINATE AVAILABILITY ISSUES WITH OWNER PRIOR TO COMMENCING WORK.  
\* DENOTES NATIVE SPECIES



PSL PROJECT NO. P21-138

PLAT SIX  
STREET TREE  
PLAN

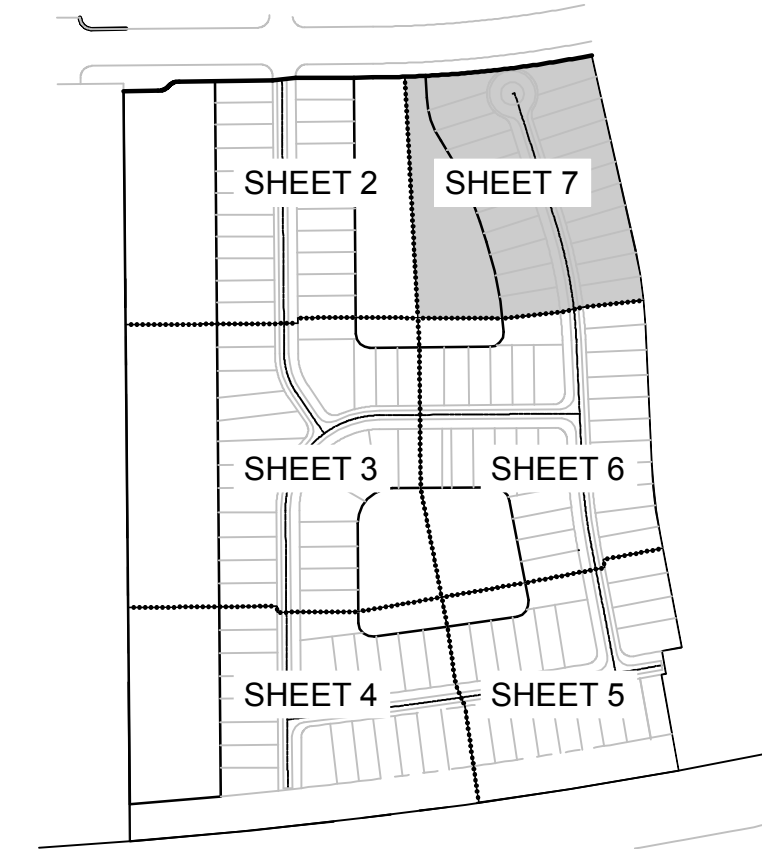
SHEET:  
**P6-6**



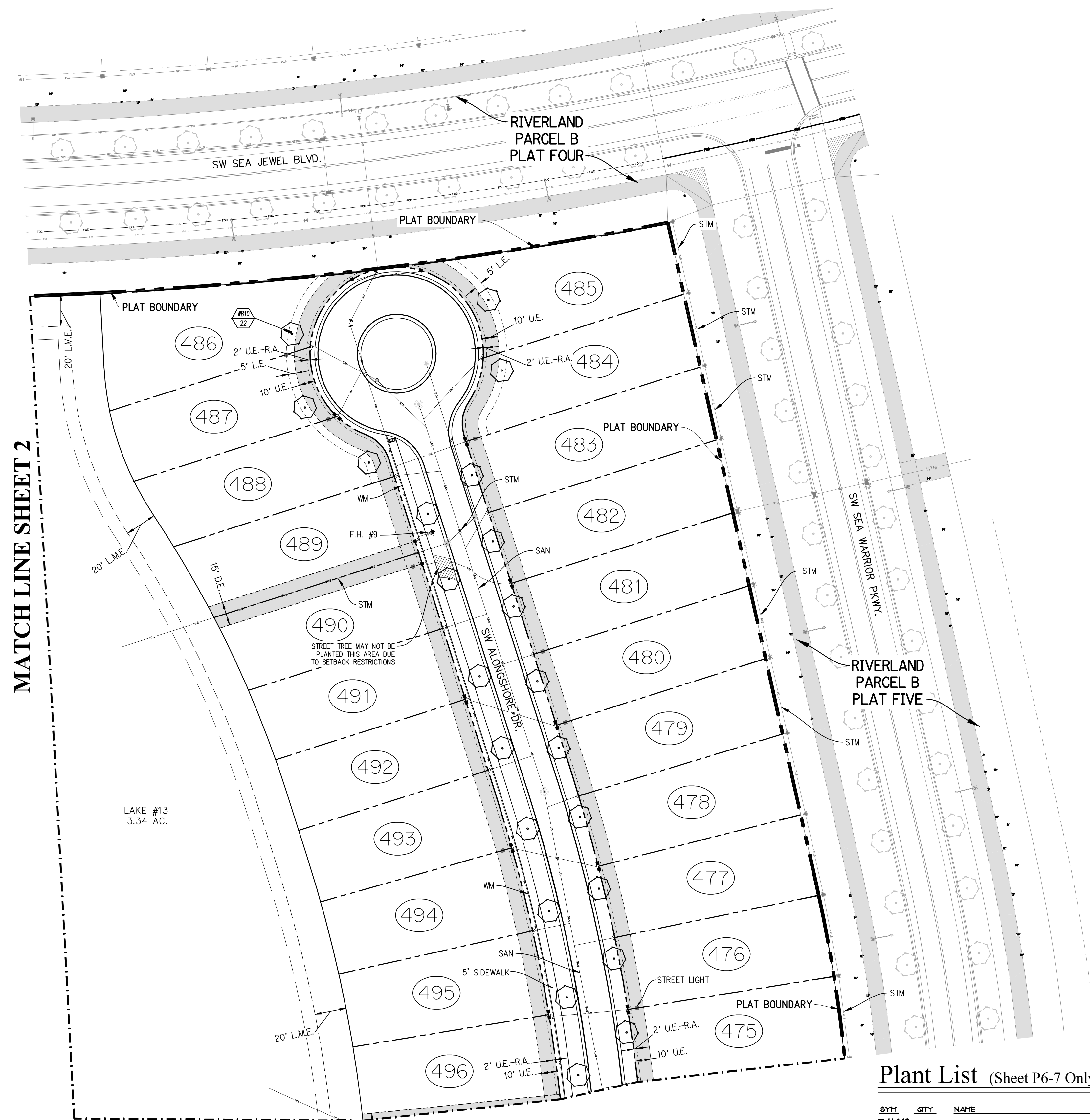
PARKER-YANNETTE  
design group, inc.

LANDSCAPE ARCHITECTURE  
PLANNING • GRAPHICS  
4425 Military Trail, Suite 202  
Jupiter, Florida 33458

Telephone: (561) 747-5069  
Fax: (561) 747-2041  
Email: mail@pydg.com  
License #LC-0001347



KEY MAP  
N.T.S.



MATCH LINE SHEET 2

MATCH LINE SHEET 6

LAKE #13  
3.34 AC.

**Plant List** (Sheet P6-7 Only)

SYM	QTY	NAME	SPECIFICATIONS
PALM8			
WB10	22	Wodyetia bifurcata / Foxtail Palm	10' ct., straight trunk, full head, unscarred trunk, intact fronds

**NOTE:**  
ALL PLANT MATERIAL SHALL MEET OR EXCEED SIZE AND CONTAINER SPECIFICATIONS IN PLANT LIST. PLANT MATERIALS NOT MEETING SPECIFICATIONS WILL BE REJECTED. CONTRACTOR TO COORDINATE AVAILABILITY ISSUES WITH OWNER PRIOR TO COMMENCING WORK.  
\* DENOTES NATIVE SPECIES

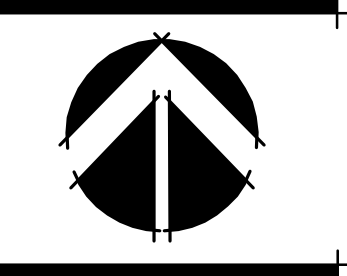


PSL PROJECT NO. P21-138

**RIVERLAND - PARCEL 'B'**  
 Developer: Riverland Associates II, LLLP  
 PORT ST. LUCIE, FLORIDA  
**PLAT SIX STREET TREE PLAN**

DATE: 6/21  
DRAWN BY: AJO  
JOB NO.: 21-081  
SCALE: 1" = 40'-0"  
FILENAME: Rvr Parcel B

REVISIONS:  
8/21  
8/21  
10/5/21 Est. at Lot 511  
11/20/21 Drainage updates



PLAT SIX  
STREET TREE  
PLAN

SHEET:  
**P6-7**