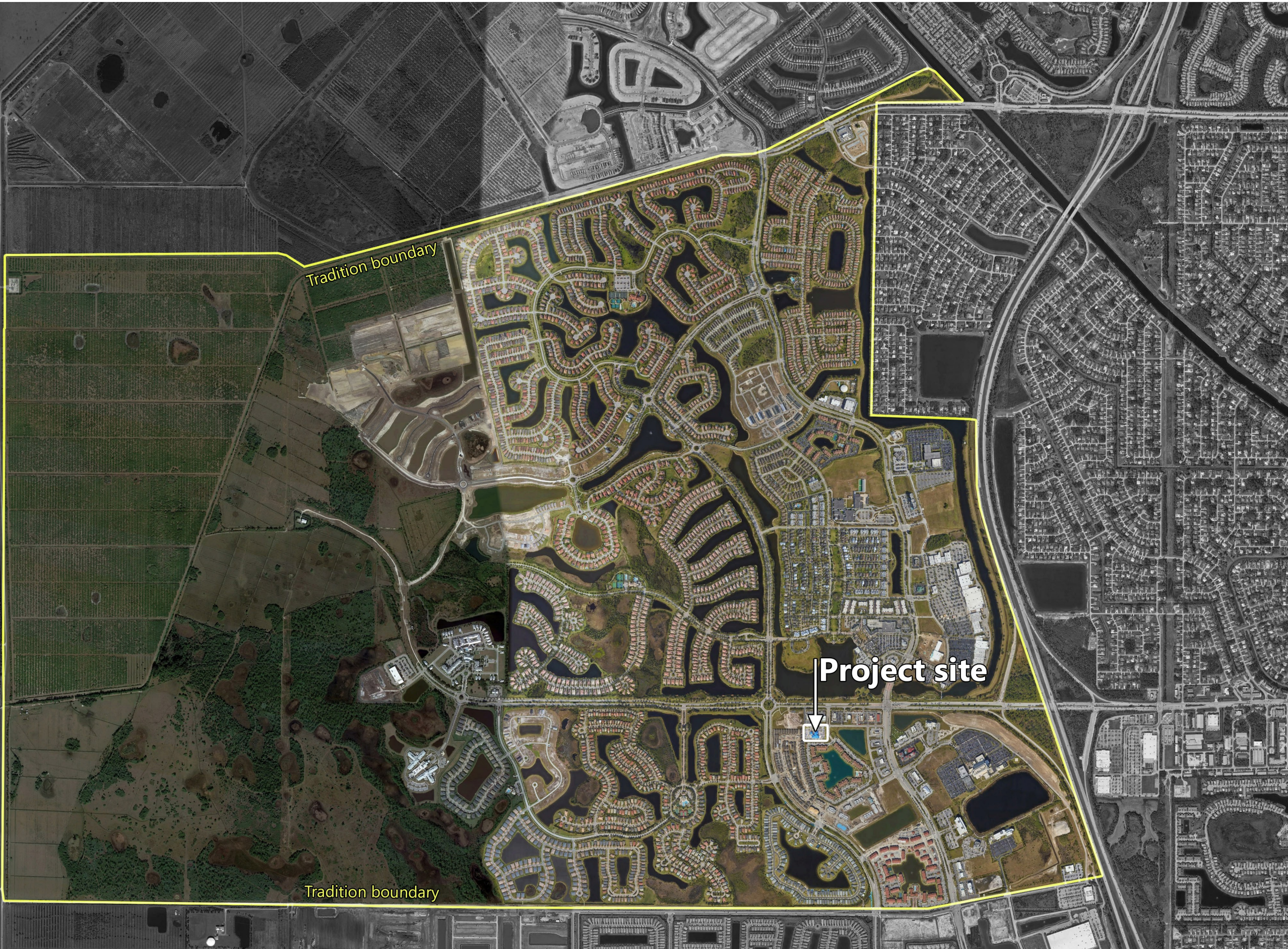




ENGINEERED PHOTO SIMULATION



ENGINEERED PHOTO SIMULATION



LOCATION MAP



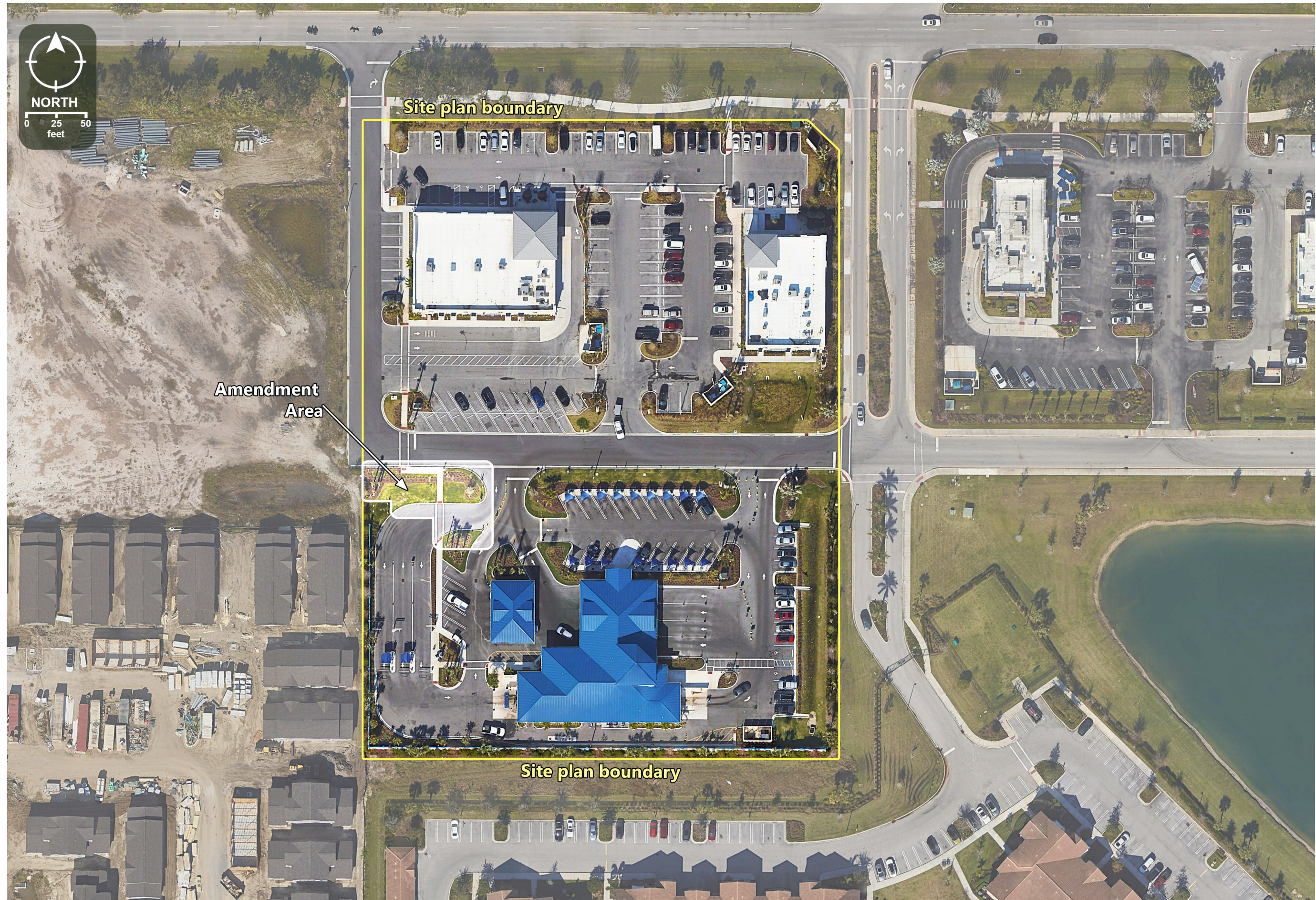
TM
Designed by
VP
Drawn by

PARADISE CAR WASH - CELL TOWER
MINOR SITE PLAN AMENDMENT
TRADITION PORT ST. LUCIE



01/19/2024

SHEET 01 of 06



SITE PLAN - EXISTING SITUATION



TM
 Designed by
 VP
 Drawn by

PARADISE CAR WASH - CELL TOWER
 MINOR SITE PLAN AMENDMENT
 TRADITION PORT ST. LUCIE



01/19/2024

SHEET 02 of 06



SITE PLAN - PROPOSED TOWER



Crape Myrtle (9 pcs.)



Gold Mound Lantana (25 pcs.)



Japanese Yew (46 pcs.)



Dwarf Fakahatchee Grass (42 pcs.)



8' high white vinyl opaque fence.
(design shown in the photo is for reference only)



TM

Designed by

VP

Drawn by

PARADISE CAR WASH - CELL TOWER

MINOR SITE PLAN AMENDMENT

TRADITION PORT ST. LUCIE



PREPARED BY:



01/19/2024

SHEET 03 of 06



ENGINEERED PHOTO SIMULATION



TM
Designed by
VP
Drawn by

PARADISE CAR WASH - CELL TOWER
MINOR SITE PLAN AMENDMENT
TRADITION PORT ST. LUCIE



01/19/2024

SHEET 04 of 06



ENGINEERED PHOTO SIMULATION



TM
Designed by
VP
Drawn by

PARADISE CAR WASH - CELL TOWER
MINOR SITE PLAN AMENDMENT
TRADITION PORT ST. LUCIE



01/19/2024

SHEET 05 of 06



ENGINEERED PHOTO SIMULATION



TM
Designed by
VP
Drawn by

PARADISE CAR WASH - CELL TOWER
MINOR SITE PLAN AMENDMENT
TRADITION PORT ST. LUCIE



01/19/2024

SHEET 06 of 06