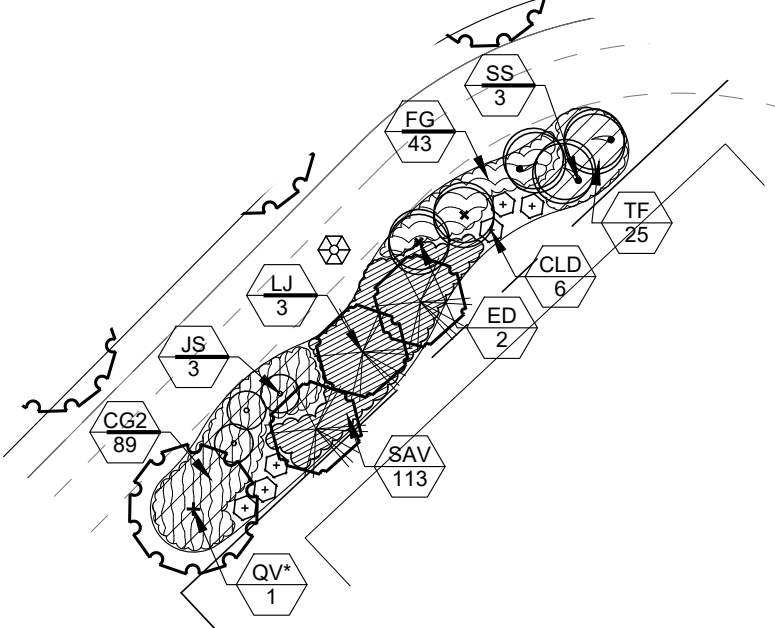


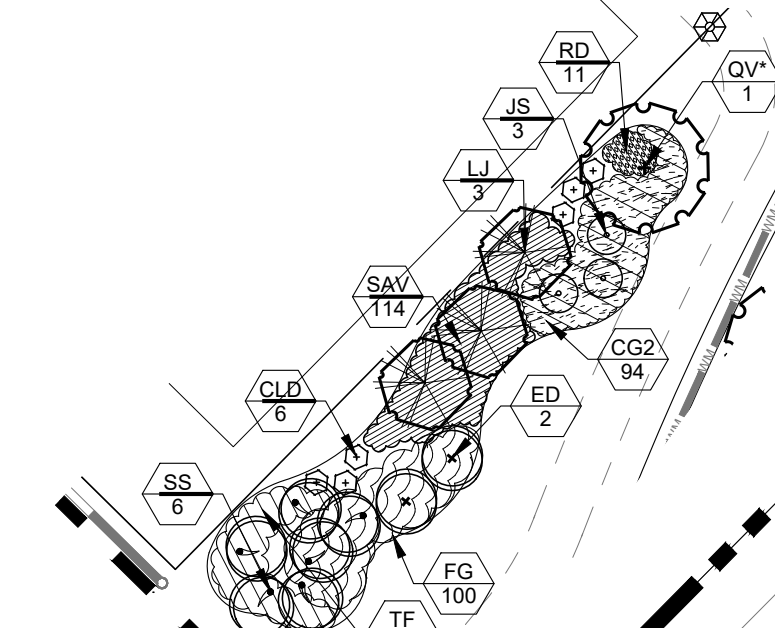
COMMON AREA 1

SCALE 1"=30'-0"



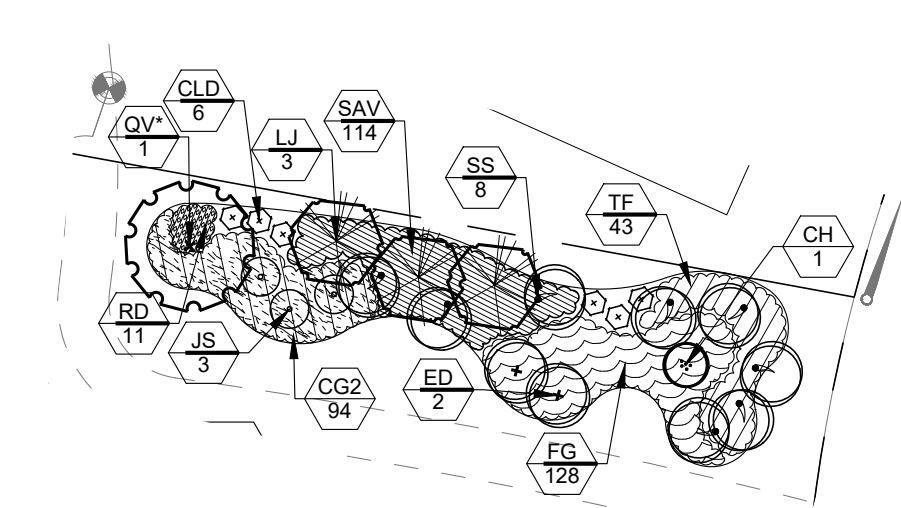
COMMON AREA 2

SCALE 1"=30'-0"



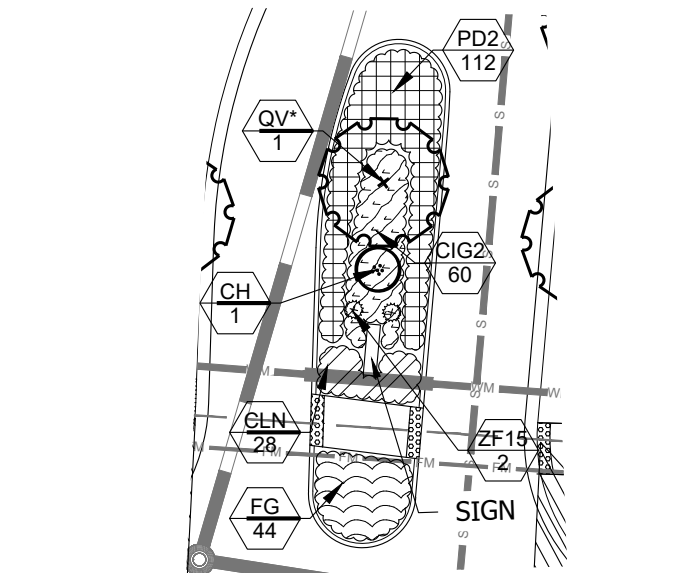
COMMON AREA 3

SCALE 1"=30'-0"

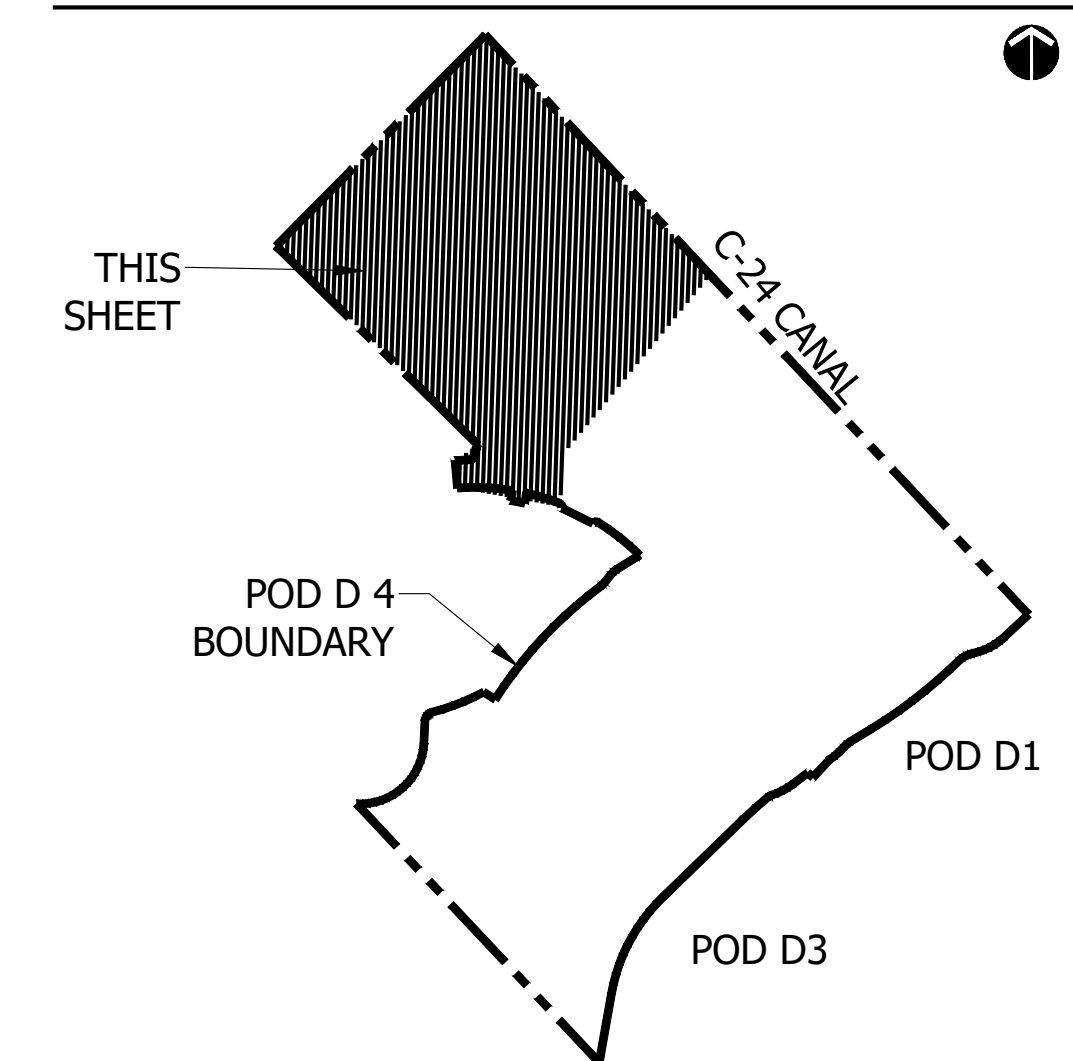


MEDIAN 1

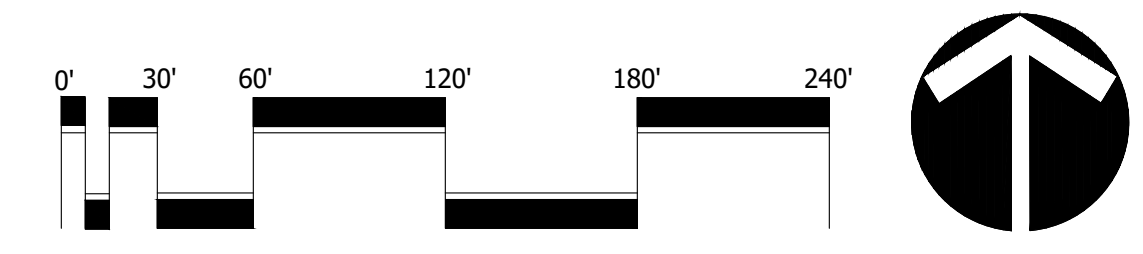
SCALE 1"=30'-0"



KEY MAP

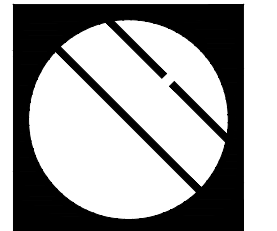


PSLUD # 11-652-33C
 PSL PROJ# 21-004
 POD D PLAT 4
SITE PLAN



Scale: 1" = 60'-0"

North



Cotleur & Hearing

Landscape Architects
 Land Planners
 Environmental Consultants
 1934 Commerce Lane
 Suite 1
 Jupiter, Florida 33458
 561.747.6336 · Fax 747.1377
 www.cotleurhearing.com
 Lic# LC-C000239

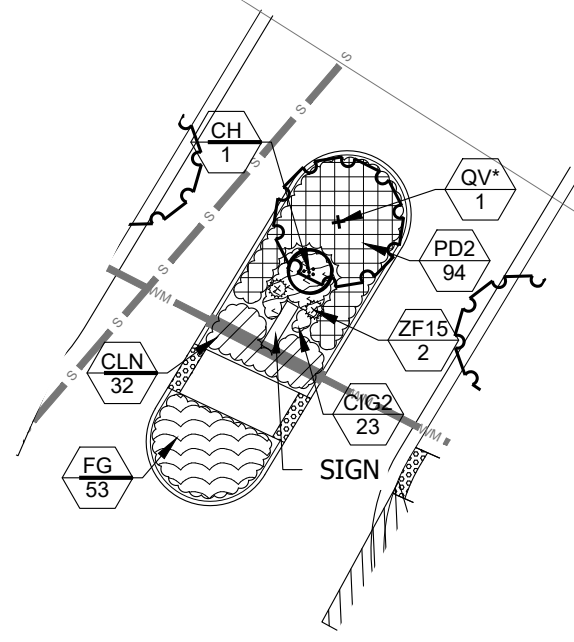
VERANO SOUTH
 Kolter Homes
 Port St. Lucie, Florida

DESIGNED	DTS
DRAWN	LAH
DATE	01-06-21
REVISIONS	02-05-21
	04-02-21

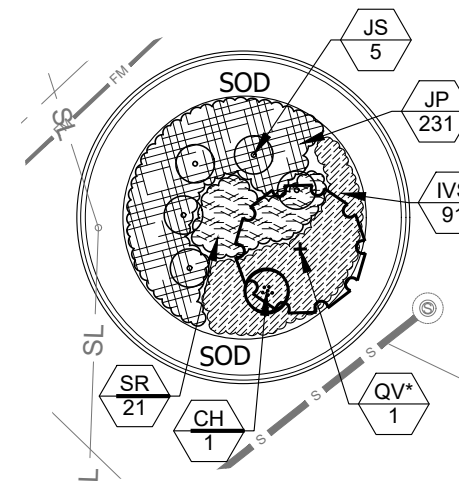
April 2, 2021 9:06:10 a.m.
 Drawing: 18-0905 PLAT_4_02-04-21.DWG

© COTLEUR & HEARING, INC.
 These drawings are the property of the architect and are not to be used for alterations or on other projects except by agreement in writing with the architect. Immediately report any discrepancies to the architect.

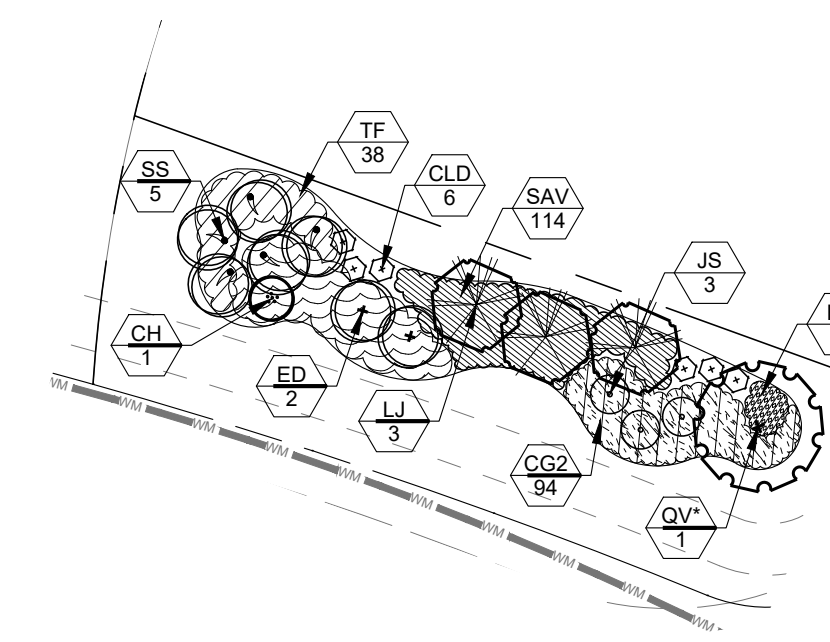
MEDIAN 2
SCALE 1"=30'-0"



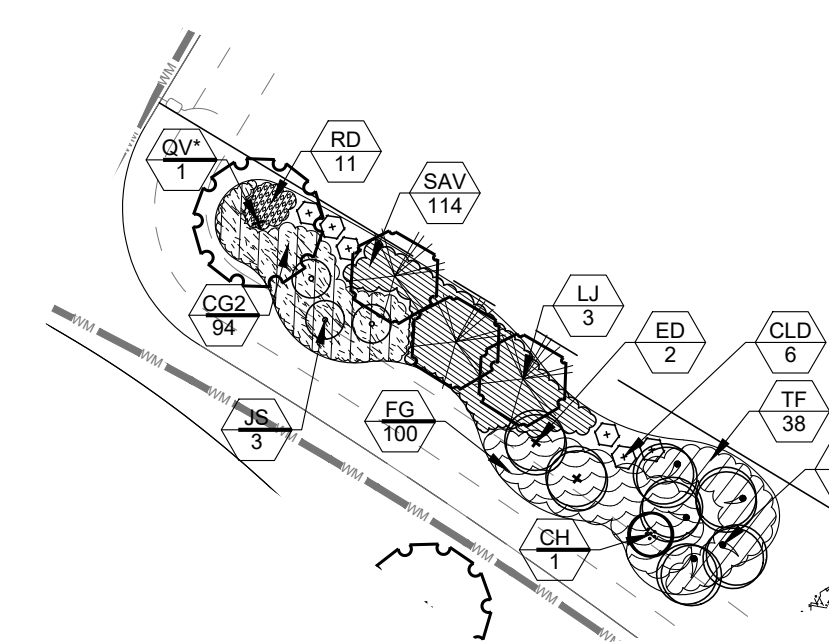
MEDIAN 3
SCALE 1"=30'-0"



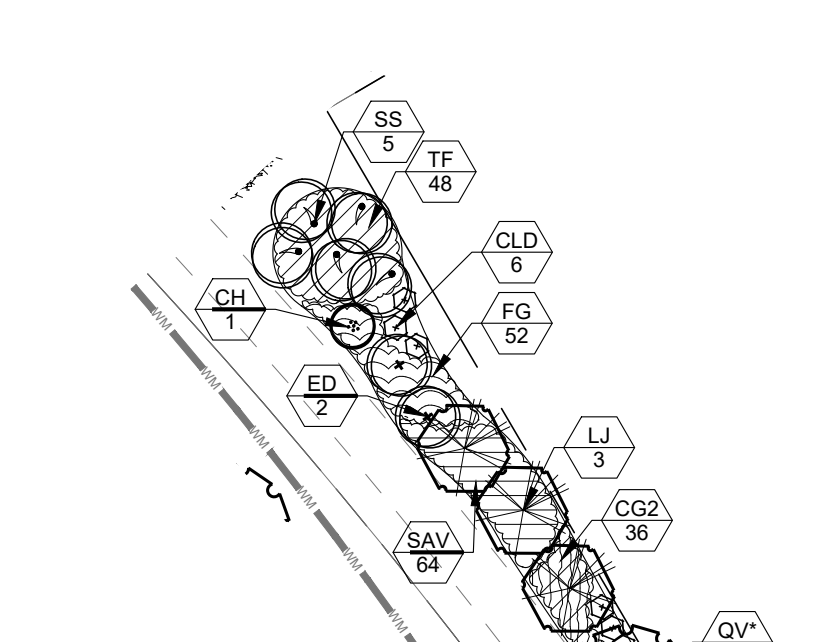
COMMON AREA 4
SCALE 1"=30'-0"



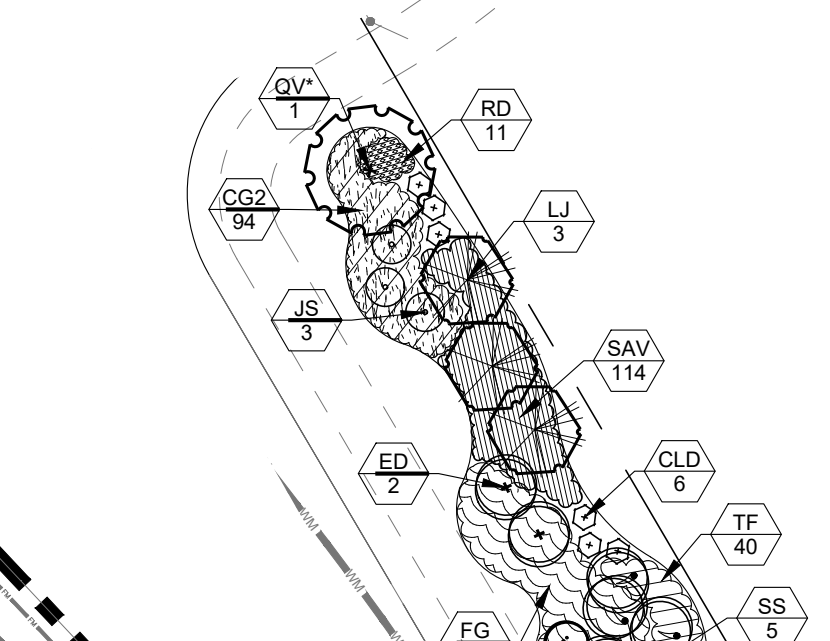
COMMON AREA 5
SCALE 1"=30'-0"



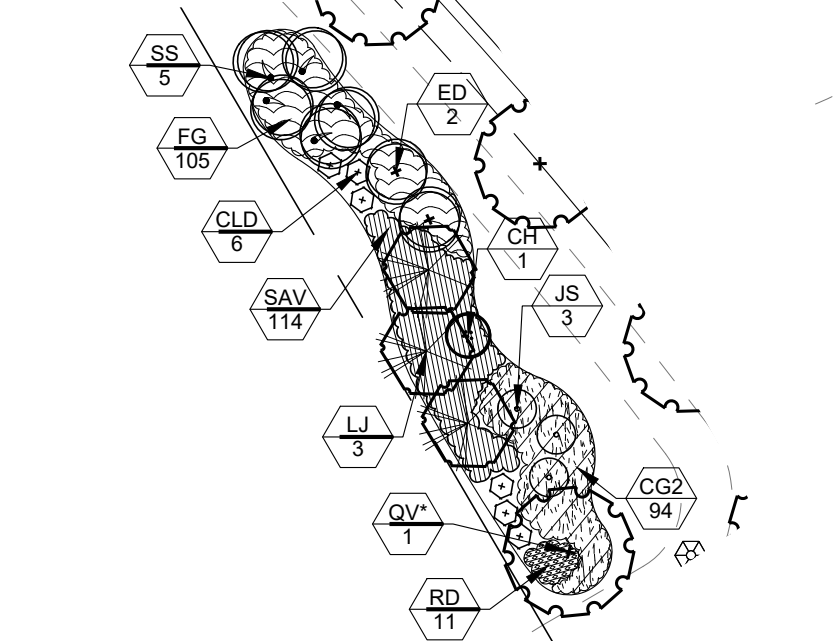
COMMON AREA 6
SCALE 1"=30'-0"



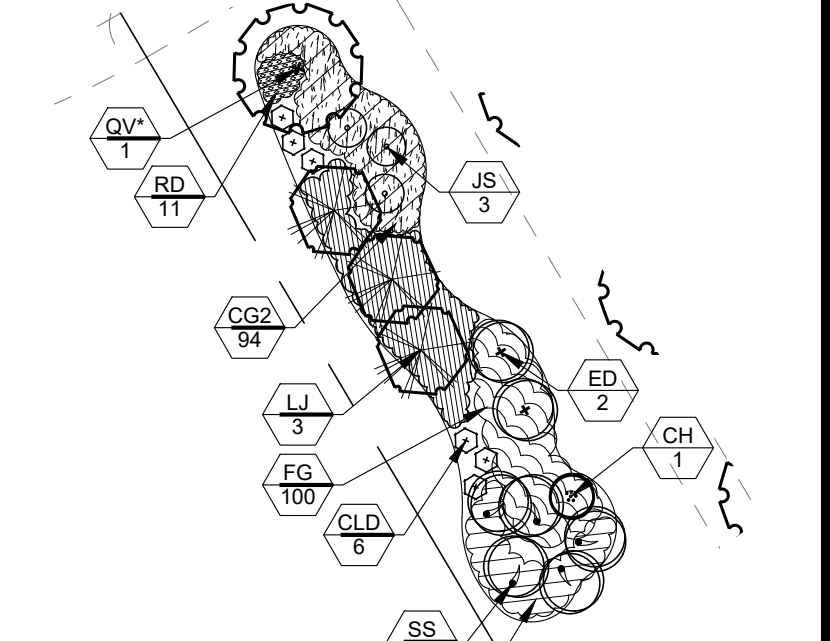
COMMON AREA 7
SCALE 1"=30'-0"



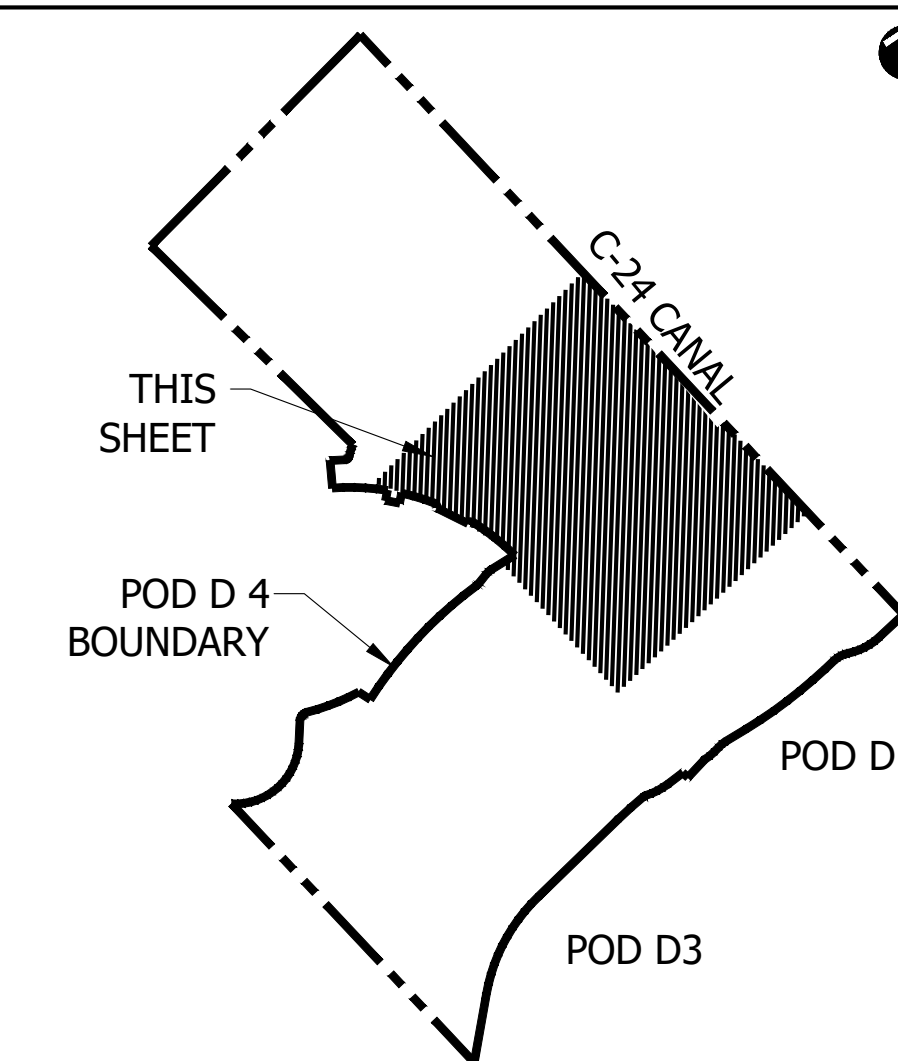
COMMON AREA 10
SCALE 1"=30'-0"



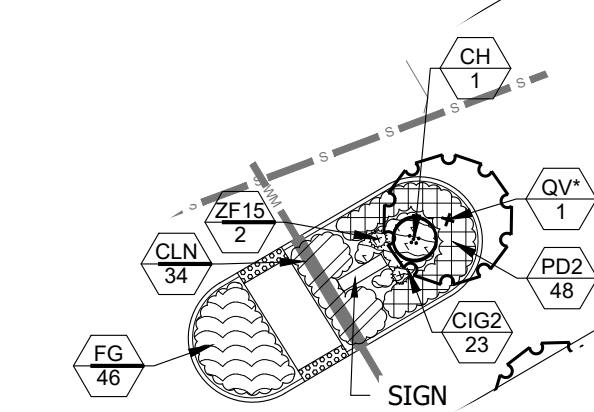
COMMON AREA 11
SCALE 1"=30'-0"



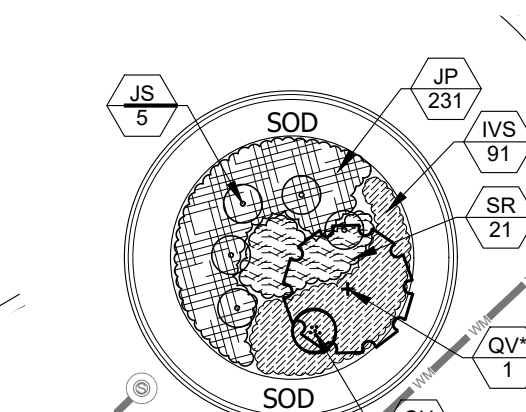
KEY MAP



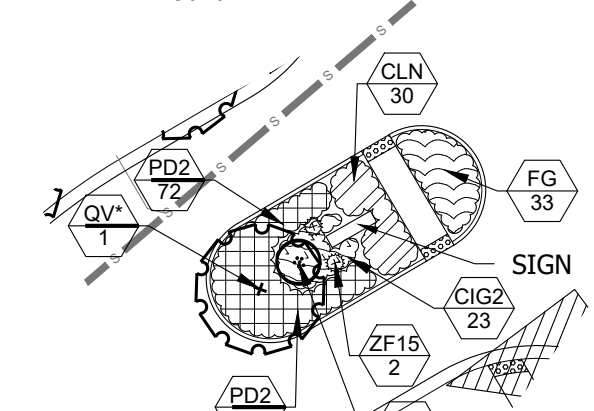
MEDIAN 4
SCALE 1"=30'-0"



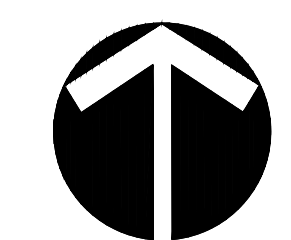
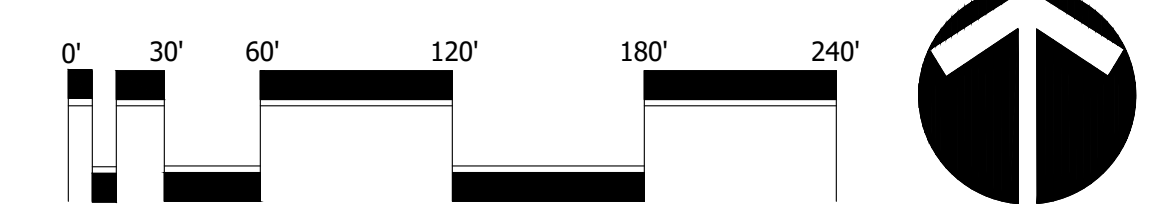
MEDIAN 5
SCALE 1"=30'-0"



MEDIAN 8
SCALE 1"=30'-0"

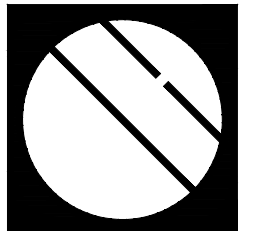


PSLUD # 11-652-33C
PSL PROJ# 21-004
POD D PLAT 4
SITE PLAN



Scale: 1" = 60'-0"

North



Cotleur & Hearing

Landscape Architects
Land Planners
Environmental Consultants

1934 Commerce Lane
Suite 1
Jupiter, Florida 33458
561.747.6336 · Fax 747.1377
www.cotleurhearing.com
Lic# LC-C000239

VERANO SOUTH
Kolter Homes
Port St. Lucie, Florida

DESIGNED	DTS
DRAWN	LAH
DATE	01-06-21
REVISIONS	02-05-21
	04-02-21

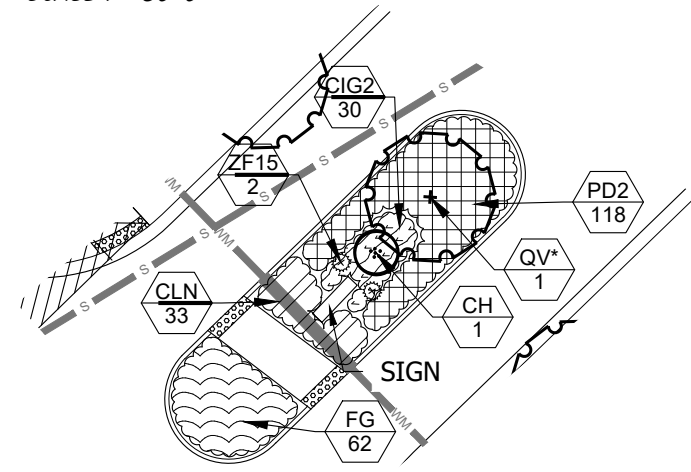
April 2, 2021 9:06:10 a.m.
Drawing: 18-0905 PLAT_4_02-04-21.DWG

SHEET 2 OF 6

© COTLEUR & HEARING, INC.
These drawings are the property of the architect and are not to be used for alterations or on other projects except by agreement in writing with the architect. Immediately report any discrepancies to the architect.

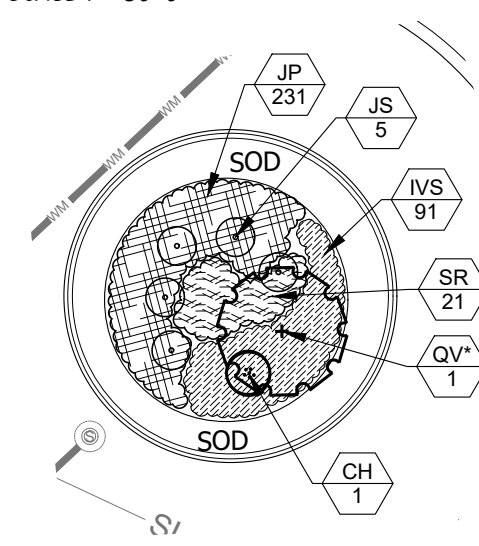
MEDIAN 6

SCALE 1"=30'-0"



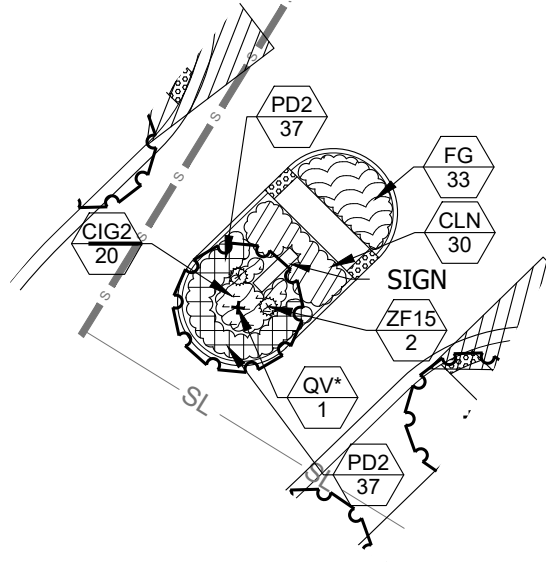
MEDIAN 7

SCALE 1"=30'-0"



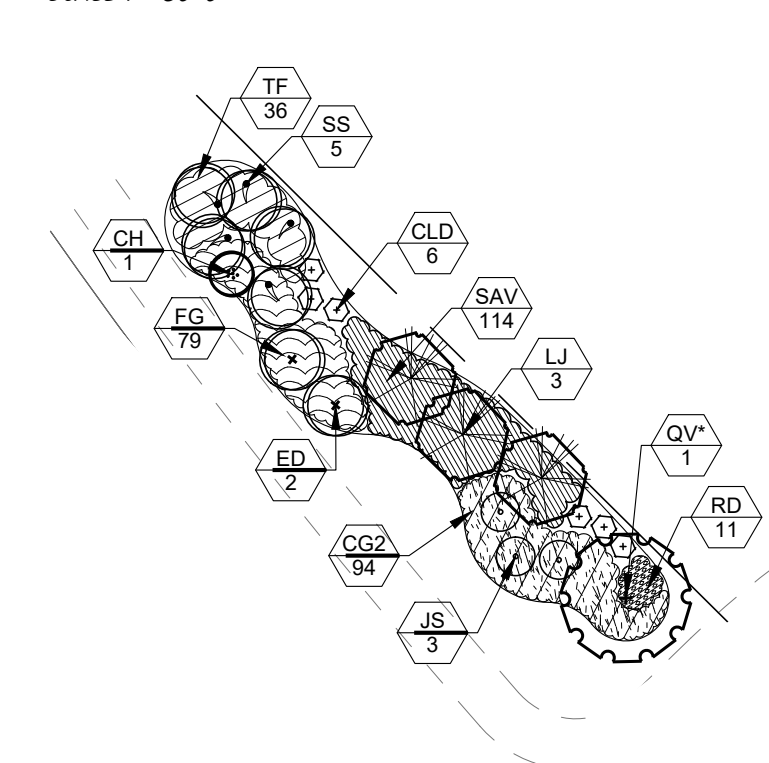
MEDIAN 9

SCALE 1"=30'-0"



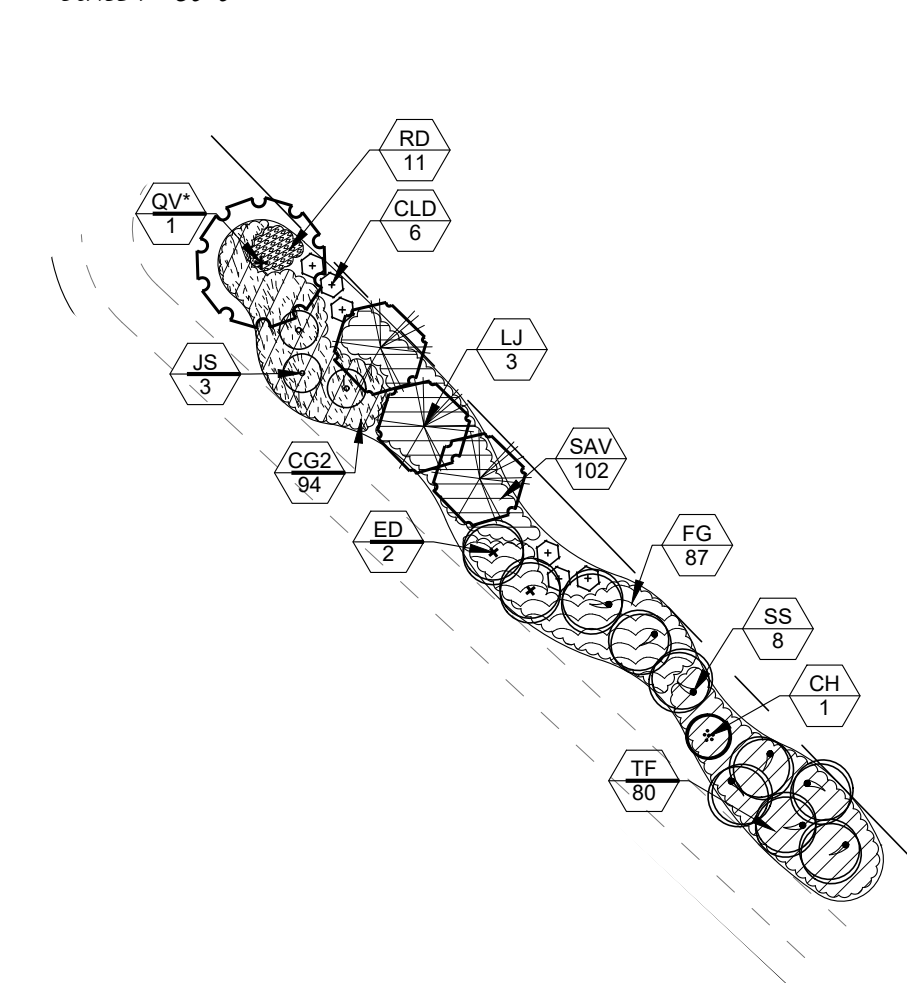
COMMON AREA 8

SCALE 1"=30'-0"



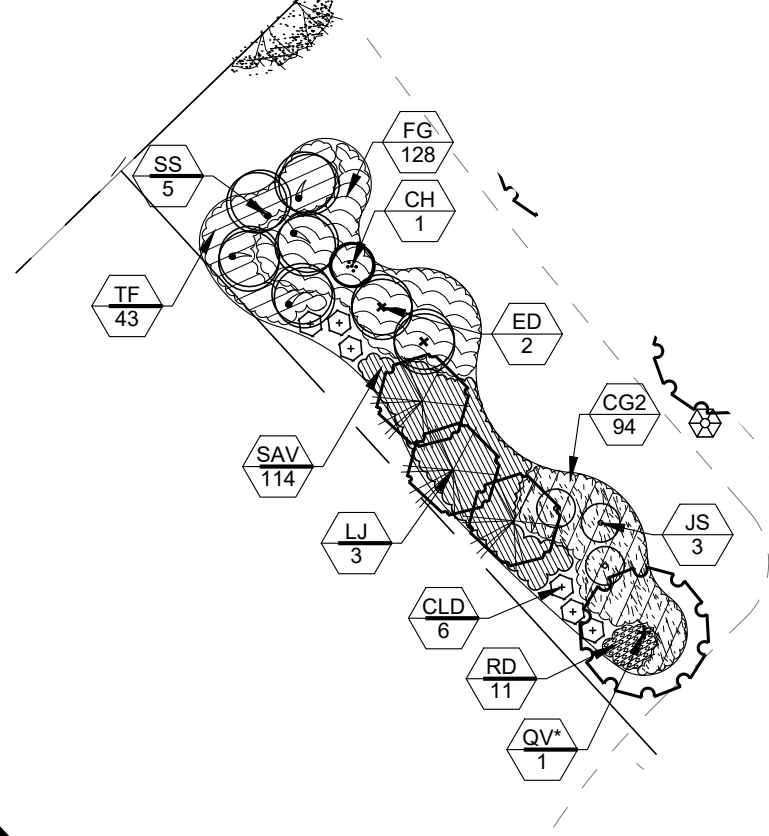
COMMON AREA 9

SCALE 1"=30'-0"



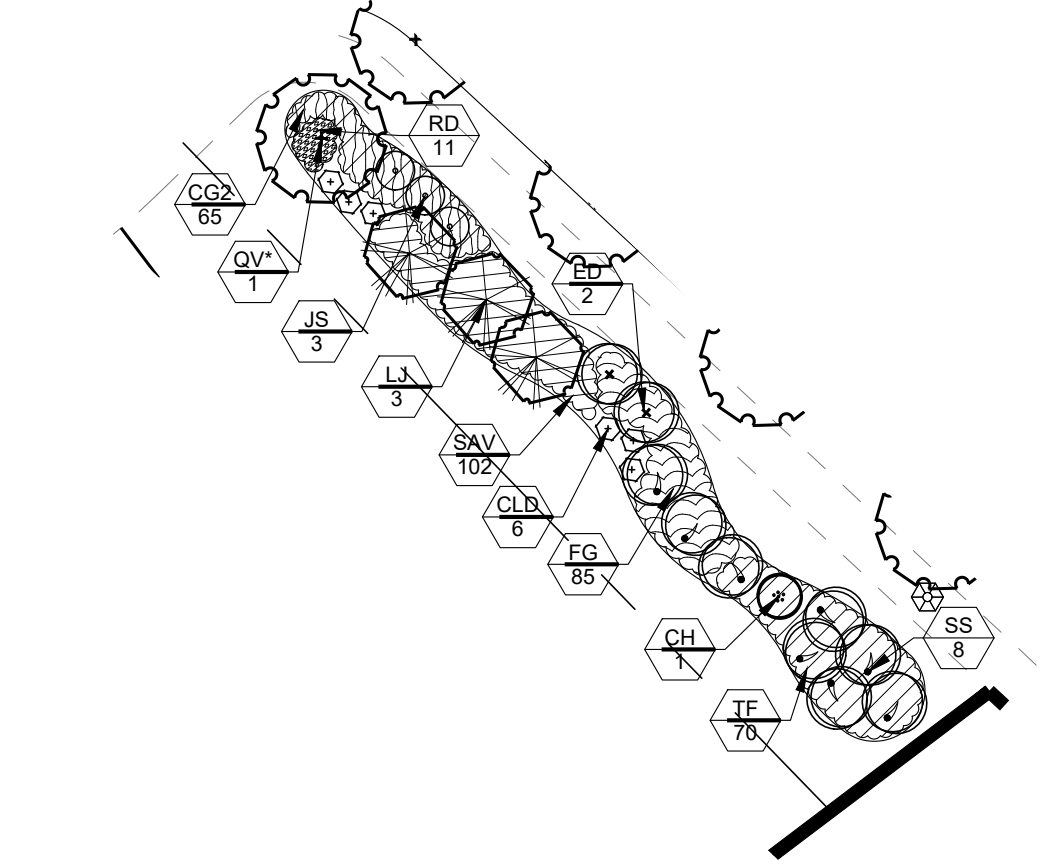
COMMON AREA 12

SCALE 1"=30'-0"

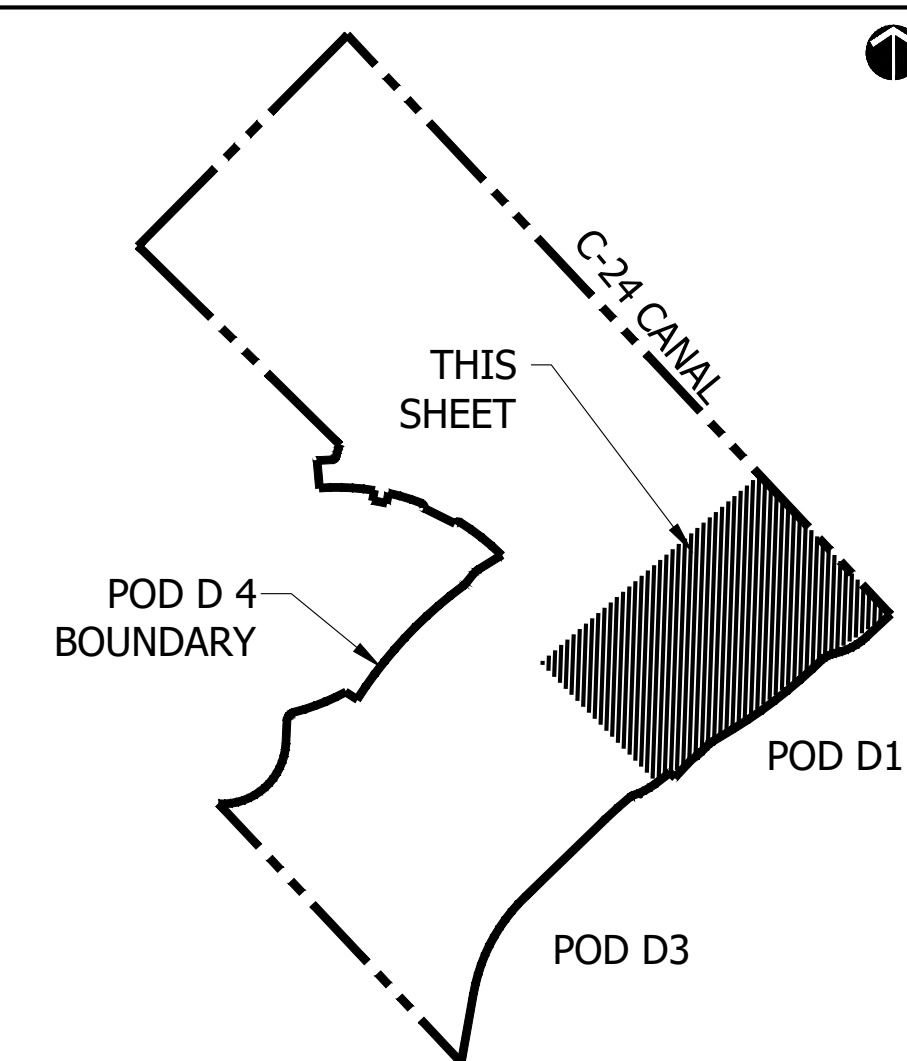


COMMON AREA 13

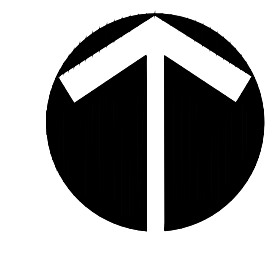
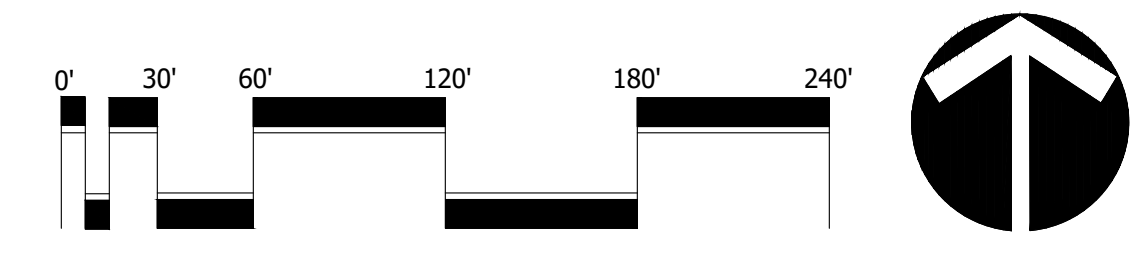
SCALE 1"=30'-0"



KEY MAP



PSLUD # 11-652-33C
PSL PROJ# 21-004
POD D PLAT 4
SITE PLAN



Scale: 1" = 60'-0"

North

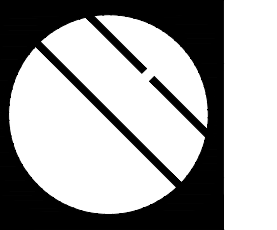



Cotleur & Hearing
Landscape Architects
Land Planners
Environmental Consultants
1934 Commerce Lane
Suite 1
Jupiter, Florida 33458
561.747.6336 · Fax 747.1377
www.cotleurhearing.com
Lic# LC-C000239

VERANO SOUTH
Kolter Homes
Port St. Lucie, Florida

DESIGNED	DTS
DRAWN	LAH
DATE	01-06-21
REVISIONS	02-05-21
	04-02-21

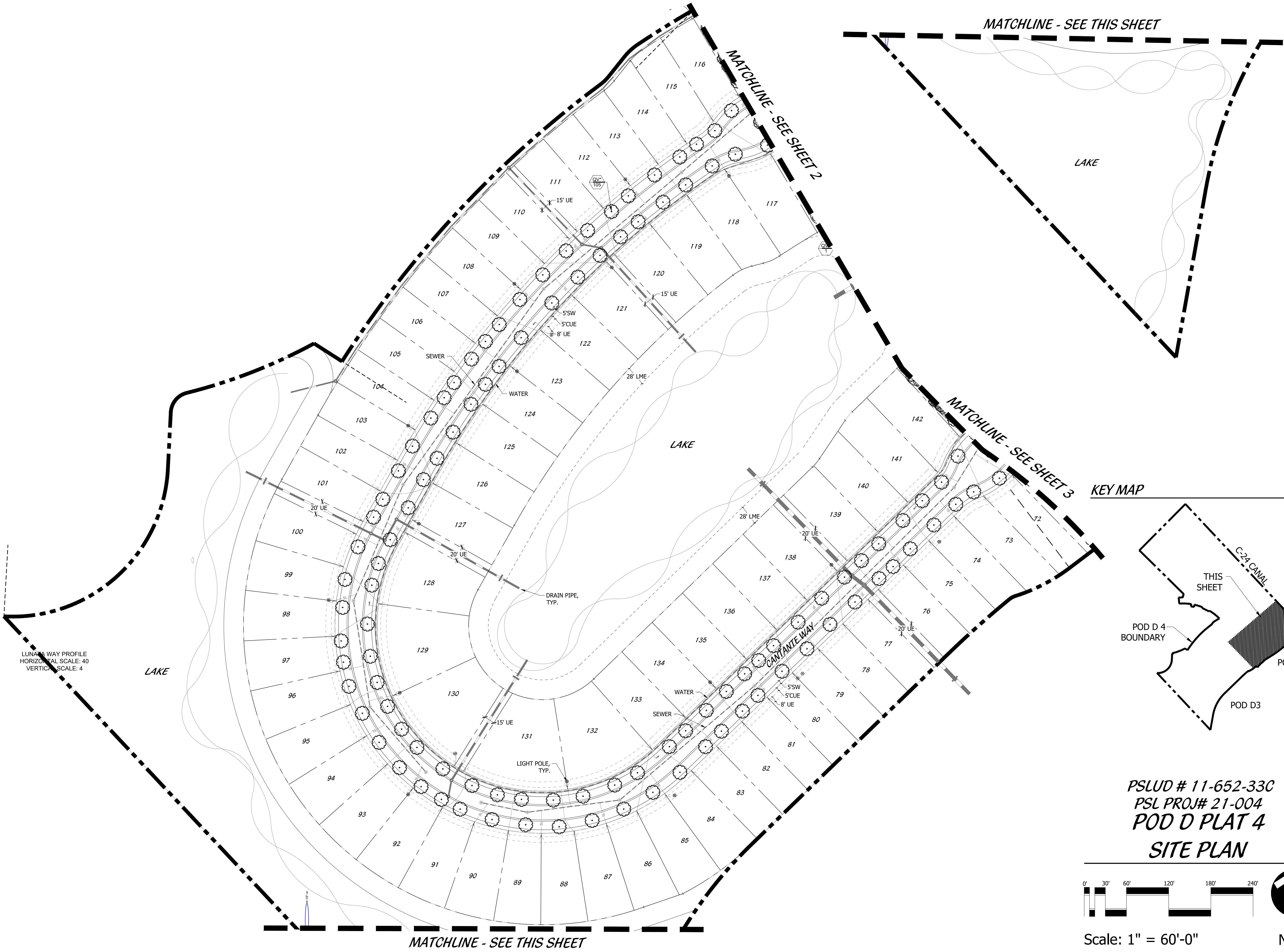
April 2, 2021 9:06:10 a.m.
Drawing: 18-0905 PLAT_4_02-04-21.DWG



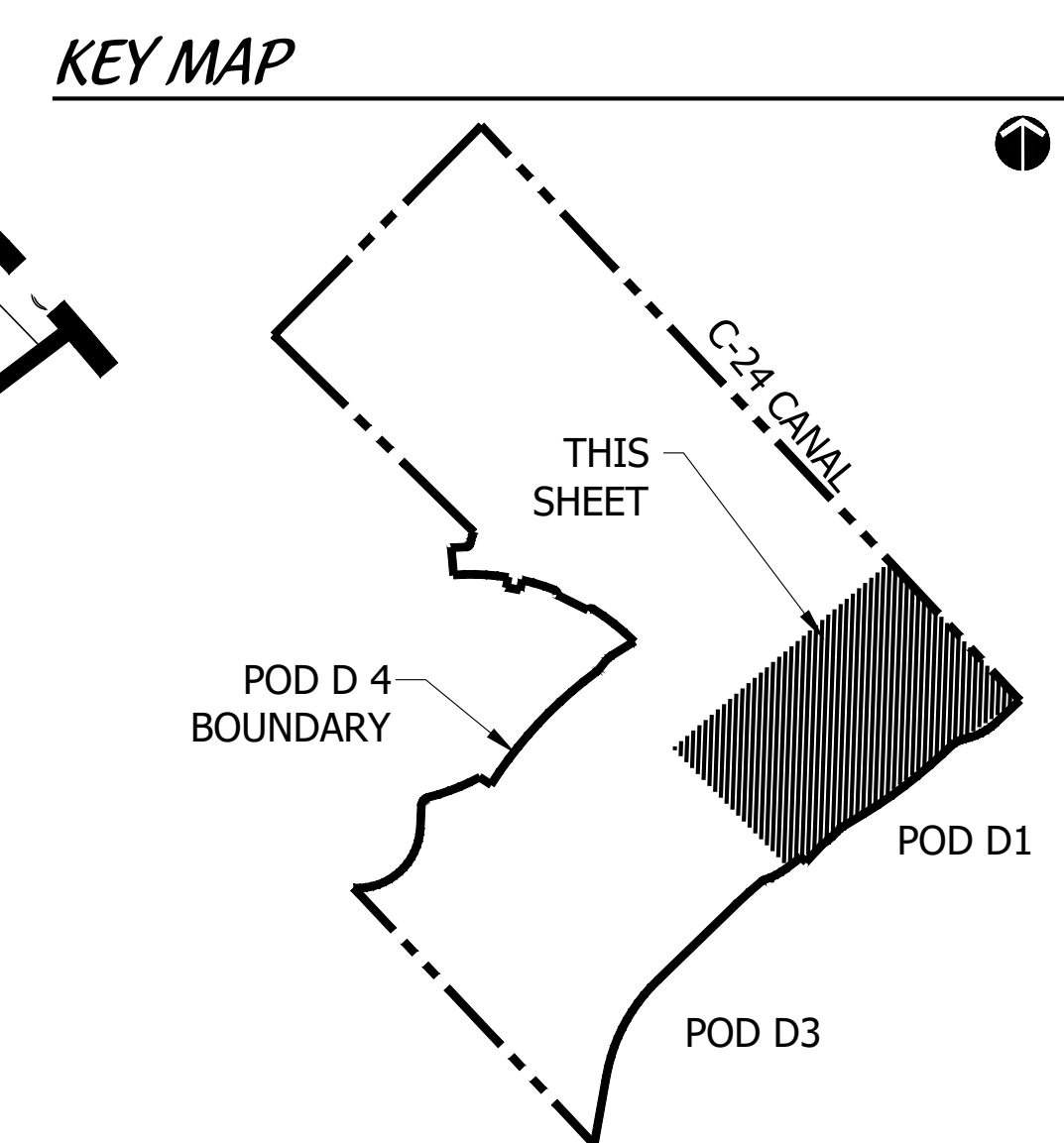
Cotleur & Hearing

Landscape Architects
Land Planners
Environmental Consultants
1934 Commerce Lane
Suite 1
Jupiter, Florida 33458
561.747.6336 · Fax 747.1377
www.cotleurhearing.com
Lic# LC-C000239

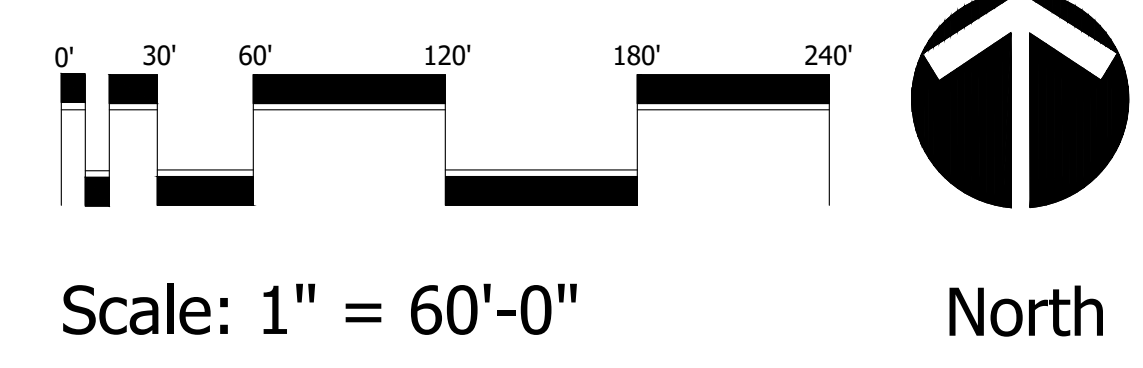
VERANO SOUTH
Kolter Homes
Port St. Lucie, Florida



LUNA WAY PROFILE
HORIZONTAL SCALE: 40'
VERTICAL SCALE: 4'



PSLUD # 11-652-33C
PSL PROJ# 21-004
POD D PLAT 4
SITE PLAN

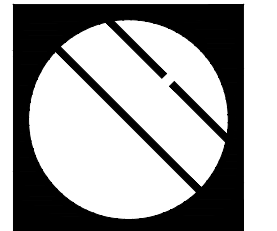
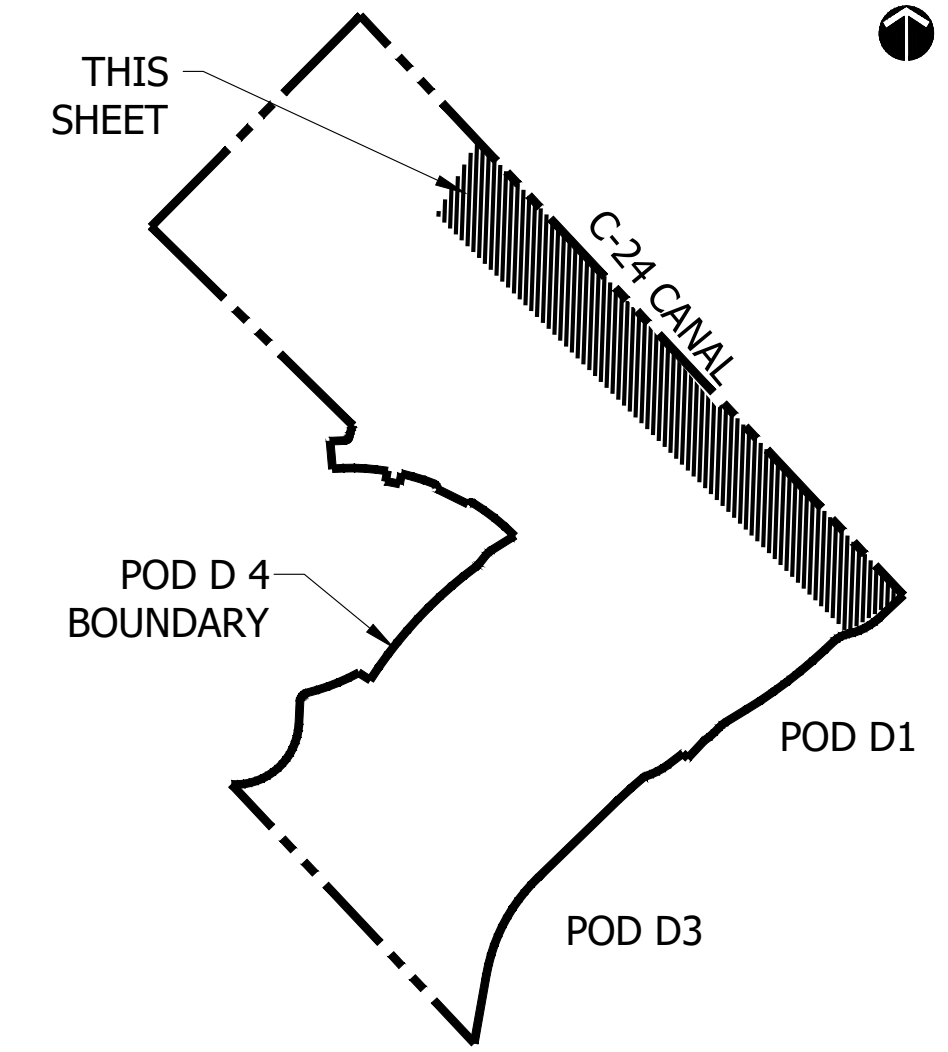


DESIGNED	DTS
DRAWN	LAH
DATE	01-06-21
REVISIONS	02-05-21
	04-02-21

April 2, 2021 9:06:10 a.m.
Drawing: 18-0905 PLAT_4_02-04-21.DWG

COMMON AREA WALKWAY
SCALE 1"=30'-0"

KEY MAP



Cotleur & Hearing
Landscape Architects
Land Planners
Environmental Consultants
1934 Commerce Lane
Suite 1
Jupiter, Florida 33458
561.747.6336 · Fax 747.1377
www.cotleurhearing.com
Lic# LC-C000239

VERANO SOUTH
Kolter Homes
Port St. Lucie, Florida

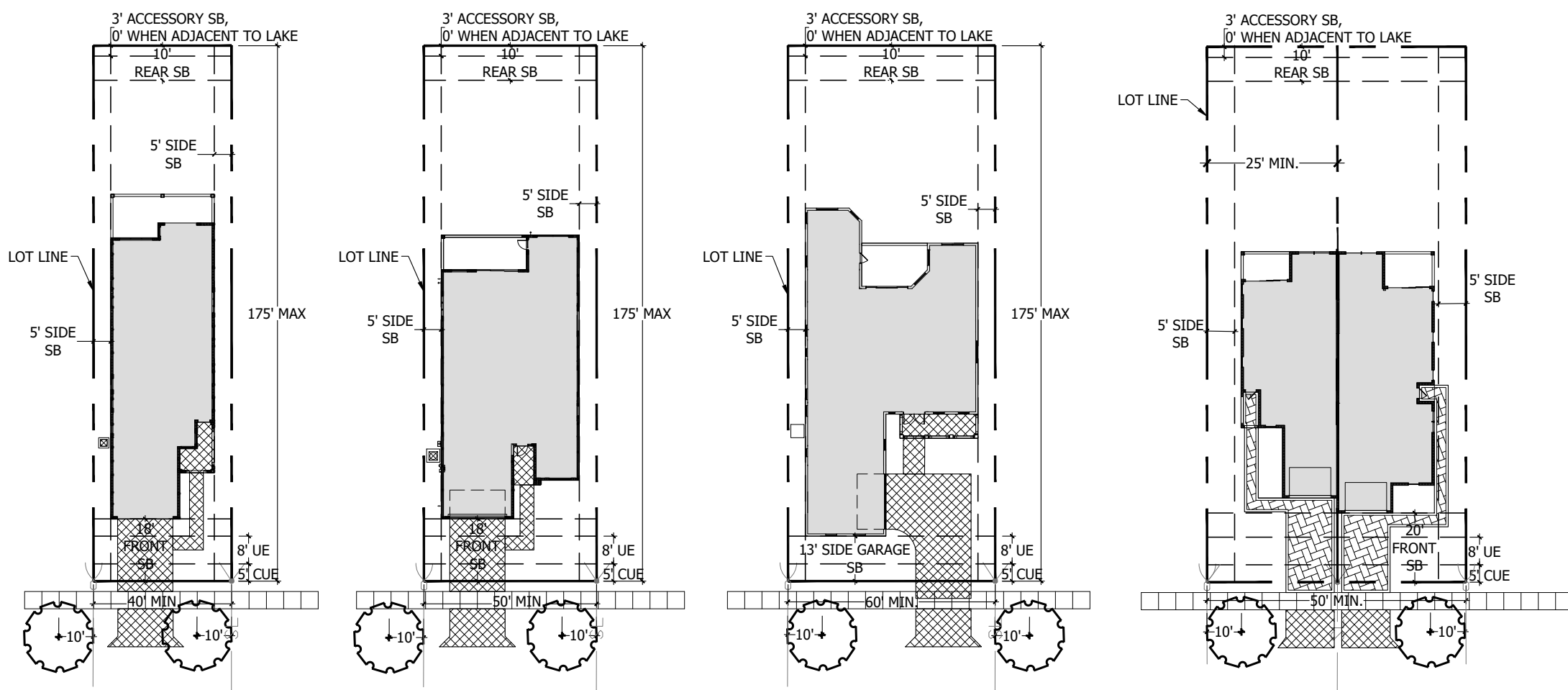
DESIGNED	DTS
DRAWN	LAH
DATE	01-06-21
REVISIONS	02-05-21
	04-02-21

April 2, 2021 9:06:10 a.m.
Drawing: 18-0905 PLAT_4_02-04-21.DWG

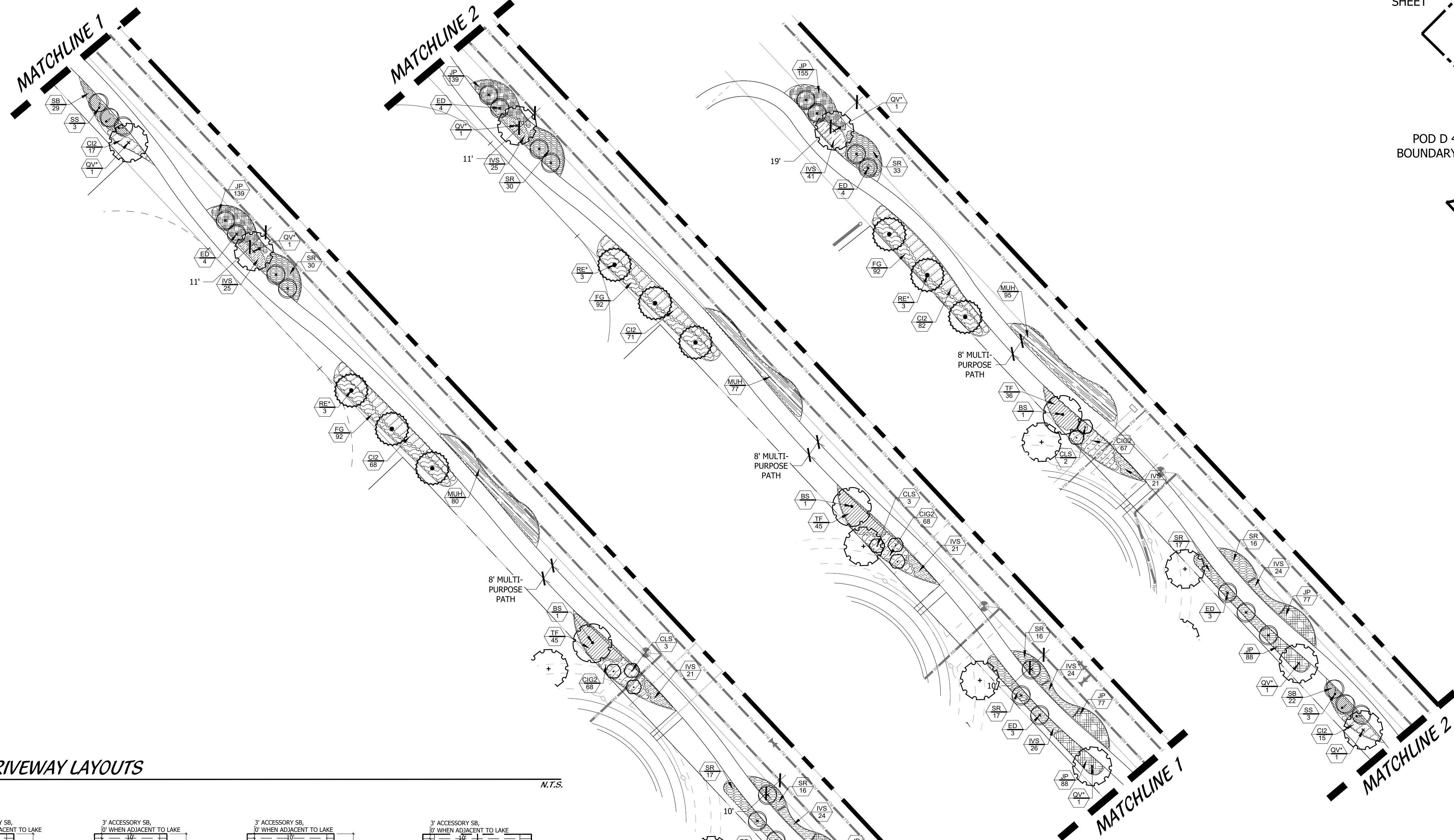
SHEET **5** OF **6**

© COTLEUR & HEARING, INC.
These drawings are the property of the architect and are not to be used for alterations or on other projects except by agreement in writing with the architect. Immediately report any discrepancies to the architect.

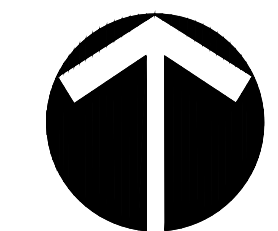
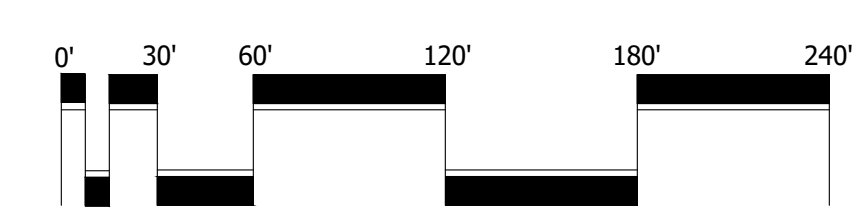
TYPICAL DRIVEWAY LAYOUTS



N.T.S.



PSLUD # 11-652-33C
PSL PROJ# 21-004
POD D PLAT 4
SITE PLAN



Scale: 1" = 60'-0"

North

LANDSCAPE SPECIFICATIONS

1. GENERAL LANDSCAPE REQUIREMENTS

LANDSCAPE CONTRACT WORK INCLUDES, BUT IS NOT LIMITED TO, SOIL PREPARATION, FINE OR FINISH GRADING, FURNISHING AND INSTALLING PLANT MATERIAL, WATERING, STAKING, GUYING AND MULCHING.

PLANT SIZE AND QUALITY

TREES, PALMS, SHRUBS, GROUNDCOVERS: PLANT SPECIES AND SIZES SHALL CONFORM TO THOSE INDICATED ON THE DRAWINGS. NOMENCLATURE SHALL CONFORM TO STANDARD PLANT NAMES, 1942 EDITION. ALL NURSERY STOCK SHALL BE IN ACCORDANCE WITH GRADES AND STANDARDS FOR NURSERY PLANTS PARTS 1 & II, LATEST EDITION PUBLISHED BY THE FLORIDA DEPARTMENT OF AGRICULTURE AND CONSUMER SERVICES, UNLESS SPECIFIED OTHERWISE. ALL PLANTS SHALL BE FLORIDA GRADE NUMBER 1 OR BETTER AS DETERMINED BY THE FLORIDA DIVISION OF PLANT INDUSTRY. TIGHTLY KNIT PLANT, 50% TRAINER OR GROWER IN ITS DEVELOPMENT THAT FIRST APPEARANCE IS UNQUESTIONABLE AND IT IS OUTSTANDINGLY SUPERIOR IN FORM, NUMBER OF BRANCHES, COMPACTNESS AND SYMMETRY. ALL PLANTS SHALL BE FRESHLY YOUNG, SOUND, HEALTHY, VIGOROUS, WELL BRANCHED AND FREE OF DISEASE AND INSECT EGGS AND LARVAE AND SHALL HAVE ADEQUATE ROOT SYSTEMS. TREES AND PALMS FOR PLANTING ROWS SHALL BE UNIFORM IN SIZE AND SHAPE. ALL PLANTS SHALL BE SUBJECT TO APPROVAL BY THE LANDSCAPE ARCHITECT. THE PLANTS FURNISHED SHALL BE NORMAL FOR THE VARIETY AND FLORIDA NUMBER 1. PLANTS SHALL BE PRUNED PRIOR TO DELIVERY ONLY UPON THE APPROVAL OF THE LANDSCAPE ARCHITECT.

ALL CONTAINER GROWN MATERIAL SHALL BE HEALTHY, VIGOROUS, WELL-ROOTED PLANTS AND ESTABLISHED IN THE CONTAINER IN WHICH THEY ARE SOLD. THE PLANTS SHALL HAVE TOPS OF GOOD QUALITY AND BE IN A HEALTHY GROWING CONDITION.

AN ESTABLISHED CONTAINER GROWN PLANT SHALL BE TRANSPLANTED INTO A CONTAINER AND GROWN IN THAT CONTAINER SUFFICIENTLY LONG ENOUGH FOR THE NEW FIBROUS ROOTS TO HAVE DEVELOPED SO THAT THE ROOT MASS WILL RETAIN ITS SHAPE AND HOLD TOGETHER WHEN REMOVED FROM THE CONTAINER.

MULCH SHALL BE SHREDDED CYPRESS MULCH. ALL MULCH IS TO BE APPLIED TO A DEPTH OF 3" EXCEPT FOR THOSE SPECIFIC SITUATIONS SHOWN BELOW IN SECTIONS 2, 3 & 4.

FERTILIZER IN BACKFILL MIXTURE FOR ALL PLANTS SHALL CONSIST OF MILORGANITE ACTIVATED SLUDGE MIXED WITH THE BACKFILL AT A RATE OF NOT LESS THAN 50 LBS. PER CUBIC YARD.

FERTILIZER FOR TREES AND SHRUBS MAY BE TABLET FORM OR GRANULAR. GRANULAR FERTILIZER SHALL BE UNIFORM IN COMPOSITION, DRY AND FREE-FLOWING. THIS FERTILIZER SHALL BE DELIVERED TO THE SITE IN THE ORIGINAL UNOPENED BAGS, EACH BEARING THE MANUFACTURER'S STATEMENT OF ANALYSIS, AND SHALL MEET THE FOLLOWING REQUIREMENTS: 5% NITROGEN, 7% PHOSPHORUS, 12% POTASSIUM, PLUS IRON. TABLET FERTILIZER (AGIFORM OR EQUAL) IN 21 GRAM SIZE SHALL MEET THE FOLLOWING REQUIREMENTS: 20% NITROGEN, 10% PHOSPHORUS AND 5% POTASSIUM.

FERTILIZER WILL BE APPLIED AT THE FOLLOWING RATES:

PLANT SIZE	16-7-12	AGRIFORM TABLETS* (21 GRAM)
1 GAL	1/4 LB	1
3 GAL	1/3 LB	3
7-15 GAL	1/2 LB	5
1" CALIPER	2 LBS/1" CALIPER	2 PER 1" CALIPER
6" AND LARGER	8 LBS/1" CALIPER	2 PER 1" CALIPER

FLORIDA EAST COAST PALM SPECIAL SHALL BE APPLIED TO ALL PALMS AT INSTALLATION AT A RATE OF .5 LB. PER INCH OF TRUNK UNLESS OTHERWISE SPECIFIED.

FIELD GROWN TREES AND PALMS PREVIOUSLY ROOT PRUNED SHALL OBTAIN A ROOT BALL WITH SUFFICIENT ROOTS FOR CONTINUED GROWTH WITHOUT RESULTING SHOCK.

CONTRACTOR SHALL NOT MARK OR SCAR TRUNK IN ANY FASHION.

PLANTS SHALL BE WATERED AS NECESSARY OR WITHIN 24 HOURS AFTER NOTIFICATION BY THE LANDSCAPE ARCHITECT.

THE LOCATIONS OF PLANTS AS SHOWN IN THESE PLANS, ARE APPROXIMATE. THE FINAL LOCATIONS MAY BE ADJUSTED TO ACCOMMODATE UNFORESEEN FIELD CONDITIONS. MAJOR ADJUSTMENTS TO THE LAYOUT ARE TO BE APPROVED BY THE LANDSCAPE ARCHITECT.

ALL PLASTIC FABRIC SHALL BE REMOVED FROM PLANT MATERIAL AT TIME OF INSTALLATION.

ALL TREES MUST BE STAKED AS SHOWN ON THE PLANTING DETAILS WITHIN 24 HOURS OF PLANTING. STAKES TO REMAIN FOR A MINIMUM OF 3 MONTHS, BUT NO LONGER THAN 18 MONTHS. CONTRACTOR IS RESPONSIBLE FOR MAINTENANCE AND REMOVAL OF THE STAKES.

ALL TREES MUST BE PRUNED AS PER LANDSCAPE ARCHITECT'S DIRECTION. SABAL PALMS MAY BE HURRICANE CUT.

ALL SHRUBS, TREES AND GROUND COVER WILL HAVE IMPROVED SOIL AS PER PLANTING SOIL NOTES. THE SOILS SHALL BE PLACED IN THE HOLE DURING PLANTING. TOP DRESSING ONLY IS NOT ACCEPTABLE.

DO NOT ALLOW AIR POCKETS TO FORM WHEN BACKFILLING. ALL TREES SHALL BE SPIKED IN UTILIZING WATER AND A TREE BAR.

THE LANDSCAPE CONTRACTOR SHALL WATER, MULCH, WEED, PRUNE, AND OTHERWISE MAINTAIN ALL PLANTS, INCLUDING SOD, UNTIL COMPLETION OF CONTRACT OR ACCEPTANCE BY LANDSCAPE ARCHITECT. SETTLED PLANTS SHALL BE RESET TO PROPER GRADE, PLANTING SAUCERS RESTORED, AND DEFECTIVE WORK CORRECTED.

THE LANDSCAPE CONTRACTOR SHALL AT ALL TIMES KEEP THE PREMISES FREE FROM ACCUMULATION OF WASTE MATERIALS OR DEBRIS CAUSED BY HIS CREW DURING THE PERFORMANCE OF THE WORK UPON COMPLETION OF THE WORK, THE CONTRACTOR SHALL PROMPTLY REMOVE ALL WASTE MATERIALS, DEBRIS, UNUSED PLANT MATERIAL, EMPTY PLANT CONTAINERS AND ALL EQUIPMENT FROM THE PROJECT SITE.

UPON COMPLETION OF THE WORK, THE LANDSCAPE CONTRACTOR SHALL NOTIFY THE LANDSCAPE ARCHITECT AND REQUEST A FINAL INSPECTION. ANY ITEMS THAT ARE JUDGED INCOMPLETE OR UNACCEPTABLE BY THE LANDSCAPE ARCHITECT OR OWNER'S REPRESENTATIVE SHALL BE PROMPTLY CORRECTED BY THE LANDSCAPE CONTRACTOR.

THE LANDSCAPE CONTRACTOR SHALL GUARANTEE ALL PLANT MATERIAL FOR A PERIOD OF SIX (6) MONTHS FROM THE DATE OF CONDITIONAL ACCEPTANCE IN WRITING FROM THE LANDSCAPE ARCHITECT. AT THE TIME OF CONDITIONAL ACCEPTANCE, THE SIX (6) MONTH PERIOD SHALL COMMENCE. ANY MATERIALS WHICH HAVE DIED DURING THIS PERIOD SHALL BE PROMPTLY REPLACED WITH SPECIES THAT MEET THE MINIMUM REQUIREMENTS CALLED FOR ON THE DRAWINGS. THE LANDSCAPE CONTRACTOR SHALL NOT BE HELD RESPONSIBLE FOR THE DEATH OR DAMAGE RESULTING FROM LIGHTNING, VANDALISM, AND AUTOMOBILES, OR FROM NEGLIGENCE BY THE OWNER.

CONTRACTOR SHALL BE RESPONSIBLE FOR WATERING AND OTHERWISE MAINTAINING PLANTS UP TO THE CONDITIONAL ACCEPTANCE PERIOD, UNLESS AN AGREEMENT WITH THE LANDSCAPE ARCHITECT PROVIDES FOR A DIFFERENT ARRANGEMENT.

ALL LABOR AND MATERIAL FOR SOIL AMENDMENTS AND FERTILIZER THAT IS REQUIRED TO INSURE THE SUCCESSFUL ESTABLISHMENT AND SURVIVAL OF THE PROPOSED VEGETATION, AS WELL AS ALL THE COST FOR THE INSTALLATION OF UNSUITABLE OR EXCESSIVE MATERIAL, SHALL BE INCLUDED IN THE CONTRACTOR'S BID TO PERFORM THE WORK REPRESENTED IN THIS PLAN SET.

2. PLANTING TREES
EXCAVATE PIT AS PER PLANTING DETAILS. COMPACT LAYER OF TOPSOIL IN PIT WITH A SLIGHTLY DISHD GRADE TO CENTER.

BACKFILL AROUND BALL WITH TOPSOIL AND SLIGHTLY COMPACT. WATER THOROUGHLY AS LAYERS ARE PLACED TO ELIMINATE VOIDS AND AIR POCKETS. BUILD 6" HIGH BERM OF TOPSOIL BEYOND EDGE OF EXCAVATION. APPLY 3" (AFTER SETTLEMENT) OF MULCH.

PRUNE TREE TO REMOVE DAMAGED BRANCHES, IMPROVE NATURAL SHAPE AND THIN OUT STRUCTURE. DO NOT REMOVE MORE THAN 15% OF BRANCHES. DO NOT PRUNE BACK TERMINAL LEADER.

PRUNE TREE TO REMOVE DAMAGED BRANCHES, IMPROVE NATURAL SHAPE AND THIN OUT STRUCTURE. DO NOT REMOVE MORE THAN 15% OF BRANCHES.

3. PLANTING SHRUBS
LAYOUT SHRUBS TO CREATE A CONTINUOUS SMOOTH FRONT LINE AND FILL IN BEHIND.

EXCAVATE PIT OR TRENCH TO 2 TIMES THE DIAMETER OF THE BALLS OR CONTAINERS OR 1'-0" WIDER THAN THE SPREAD OF ROOTS AND 3" DEEPER THAN REQUIRED FOR POSITIONING AT FORMER HEIGHT. COMPACT A LAYER OF TOPSOIL IN BOTTOM BEFORE PLACING PLANTS. BACKFILL AROUND PLANTS WITH PLANTING MIXTURE, COMPACTED TO ELIMINATE VOIDS AND AIR POCKETS. FIRM GRADE SLIGHTLY DISHD AND BERMED AT EDGES OF EXCAVATION. APPLY 3" OF MULCH.

PRUNE SHRUBS TO REMOVE DAMAGED BRANCHES, IMPROVE NATURAL SHAPE AND THIN OUT STRUCTURE. DO NOT REMOVE MORE THAN 15% OF BRANCHES.

4. PLANTING GROUND COVER
LOESEN SUBGRADE TO DEPTH OF 4" IN AREAS WHERE TOPSOIL HAS BEEN STRIPPED AND SPREAD SMOOTH.

SPACE PLANTS AS OTHERWISE INDICATED. DIG HOLES LARGE ENOUGH TO ALLOW SPREADING OF ROOTS. COMPACT BACKFILL TO ELIMINATE VOIDS AND LEAVE GRADE SLIGHTLY DISHD AT EACH PLANT. WATER THOROUGHLY. APPLY 3" OF MULCH OVER ENTIRE PLANTING BED. LIFTING PLANT FOLIAGE ABOVE MULCH. PURPLE QUEEN GROUNDCOVER, IF SPECIFIED, SHALL ONLY RECEIVE 1" OF MULCH.

DURING PERIODS OF HOT SUN AND/OR WIND AT TIME OF PLANTING, PROVIDE PROTECTIVE COVER FOR SEVERAL DAYS OR AS NEEDED.

5. PLANTING LAWNS
SODDING: SOD TYPE SPECIFIED ON PLANT LIST SHALL BE MACHINE STRIPPED NOT MORE THAN 24 HOURS PRIOR TO LAYING.

LOESEN SUBGRADE TO DEPTH OF 4" AND GRADE WITH TOPSOIL EITHER PROVIDED ON SITE OR IMPORTED TO FINISH DESIGN ELEVATION. ROLL PREPARED LAWN SURFACE. WATER THOROUGHLY, BUT DO NOT CREATE MUDDY SOIL CONDITION.

FERTILIZE SOIL AT THE RATE OF APPROXIMATELY 10 LBS. PER 1,000 S.F. SPREAD FERTILIZER OVER THE AREA TO RECEIVE GRASS BY USING AN APPROVED DISTRIBUTION DEVICE CALIBRATED TO DISTRIBUTE THE APPROPRIATE QUANTITY. DO NOT FERTILIZE WHEN WIND VELOCITY EXCEEDS 15 M.P.H. THOROUGHLY MIX FERTILIZER INTO THE TOP 2" OF TOPSOIL.

LAY SOD STRIPS WITH TIGHT JOINTS. DO NOT OVERLAP. STAGGER STRIPS TO OFFSET JOINTS IN ADJACENT COURSES. WORK SIFTED SOIL MIX INTO MINOR CRACKS BETWEEN PIECES OF SOD AND REMOVE EXCESS SOIL DEPOSITS FROM SODDED AREAS. SOD ON SLOPES GREATER THAN 3:1 SHALL BE STAKED IN PLACE. ROLL OR STAMP LIGHTLY AND WATER THOROUGHLY WITH A FINE SPRAY IMMEDIATELY AFTER PLANTING.

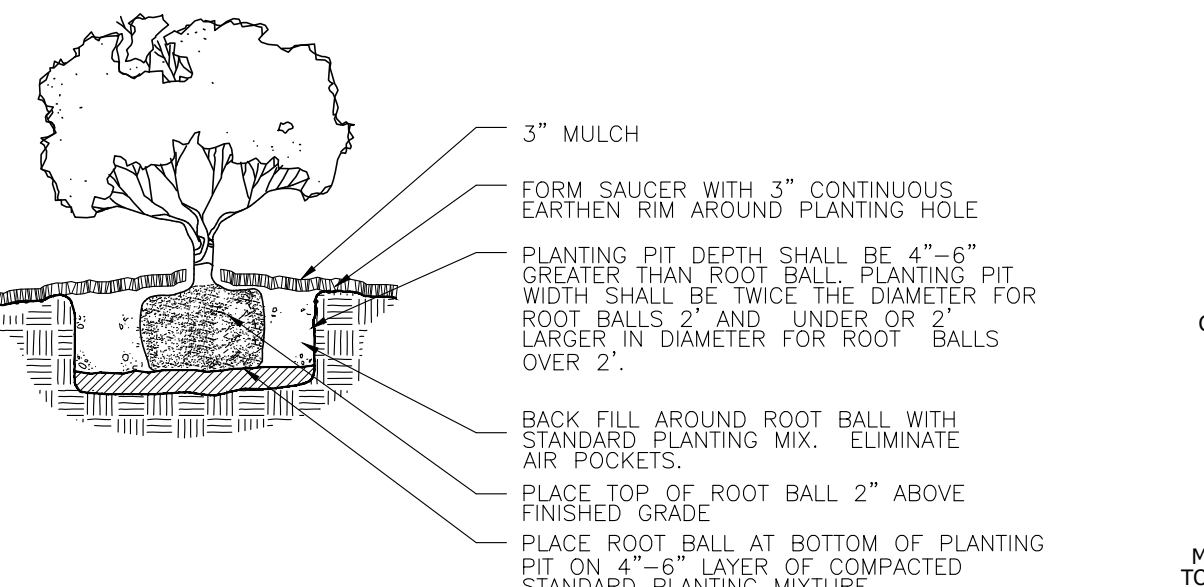
6. MISCELLANEOUS LANDSCAPE WORK
LANDSCAPE MAINTENANCE
MAINTAIN LANDSCAPE WORK UNTIL FINAL ACCEPTANCE IS ISSUED BY THE OWNER'S REPRESENTATIVE. INCLUDE WATERING, WEEDING, CULTIVATING, RESTORATION OF GRADE, MOWING AND TRIMMING GRASS, PRUNING TREES AND SHRUBS, PROTECTION FROM INSECTS AND DISEASES, FERTILIZING AND SIMILAR OPERATIONS AS NEEDED TO INSURE NORMAL GROWTH AND GOOD HEALTH FOR LIVE PLANT MATERIAL.

PLANT MATERIAL SUBSTITUTION
NO SUBSTITUTION OF PLANT MATERIAL, TYPE OR SIZES WILL BE PERMITTED WITHOUT AUTHORIZATION FROM THE LANDSCAPE ARCHITECT.

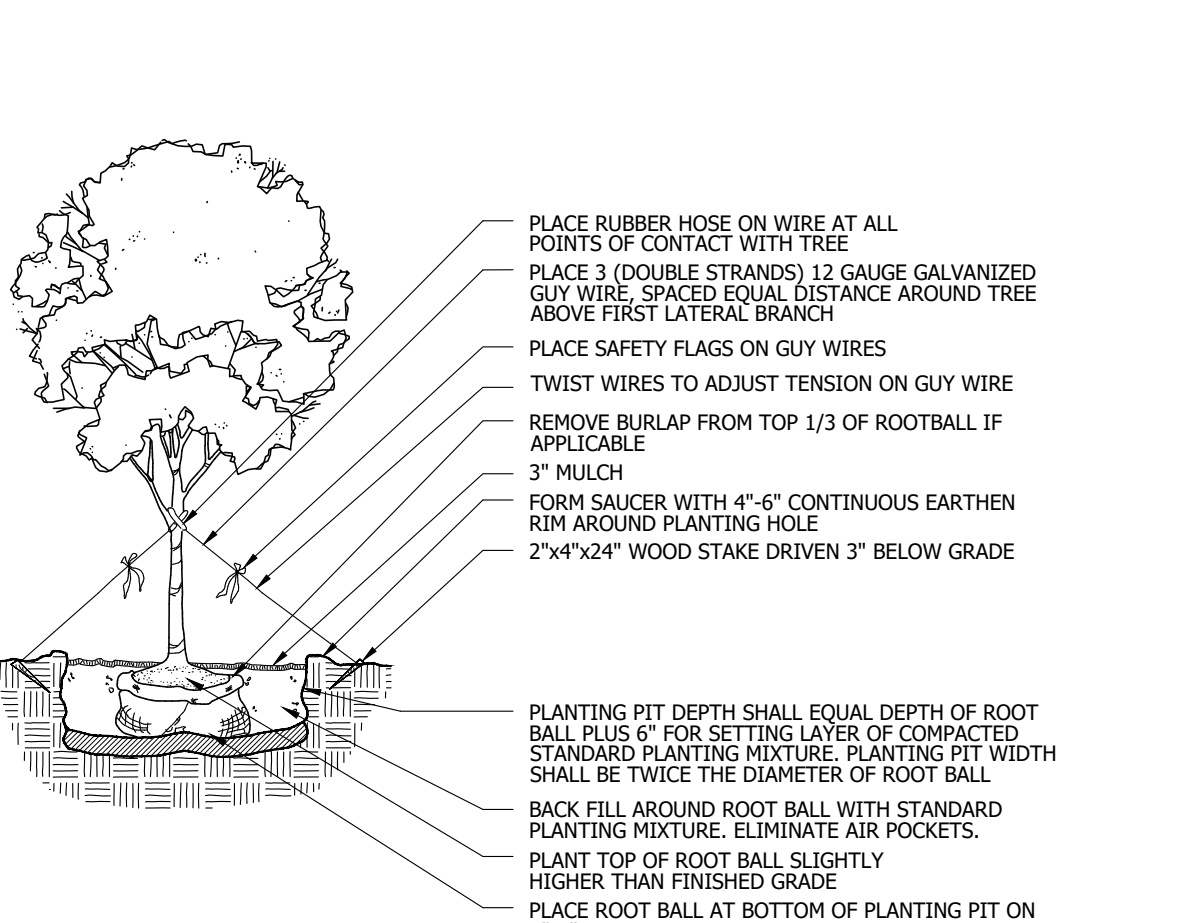
PLANTING BED PREPARATION
ALL PLANTING BEDS SHALL BE PROPERLY PREPARED PRIOR TO THE COMMENCEMENT OF ANY PLANTING. PLANTING AREAS, INCLUDING LAWNS SHALL BE FREE OF ALL WEEDS AND NUISANCE VEGETATION. IF TORPEDO GRASS (PANICUM REPENS) IS PRESENT OR ENCOUNTERED DURING PLANTING, THE LANDSCAPE CONTRACTOR SHALL MAP ALL PLANTING AREAS IT CAN BE DEMONSTRATED THAT IT HAS BEEN COMPLETELY REMOVED OR ERADICATED. THERE SHALL BE NO EXCEPTIONS TO THIS PROVISION.

ALL LANDSCAPE ISLANDS AND BEDS WILL BE FREE OF SLECK ROCK AND CONSTRUCTION DEBRIS AND WILL BE EXCAVATED TO A DEPTH OF 30 INCHES OR TO A CLEAN, NATIVE SOIL AND FILLED WITH THE SPECIFIED BACKFILL MIXTURE.

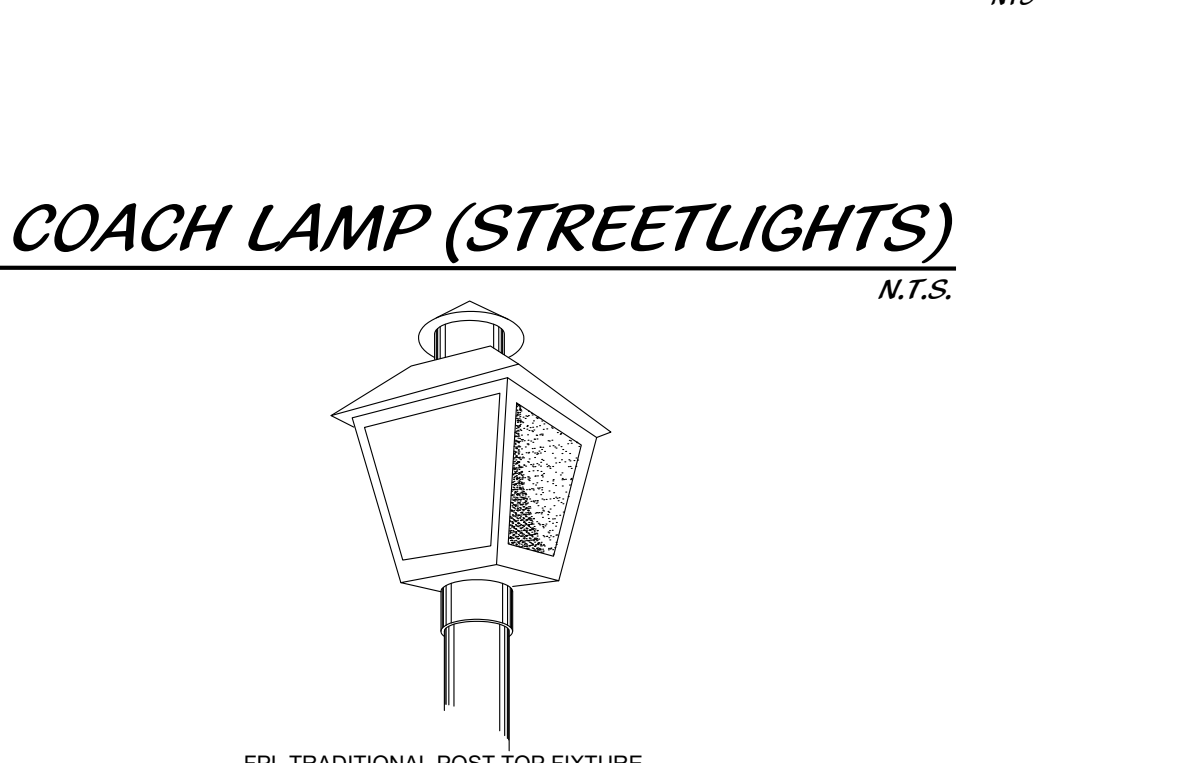
PLANTING DETAILS



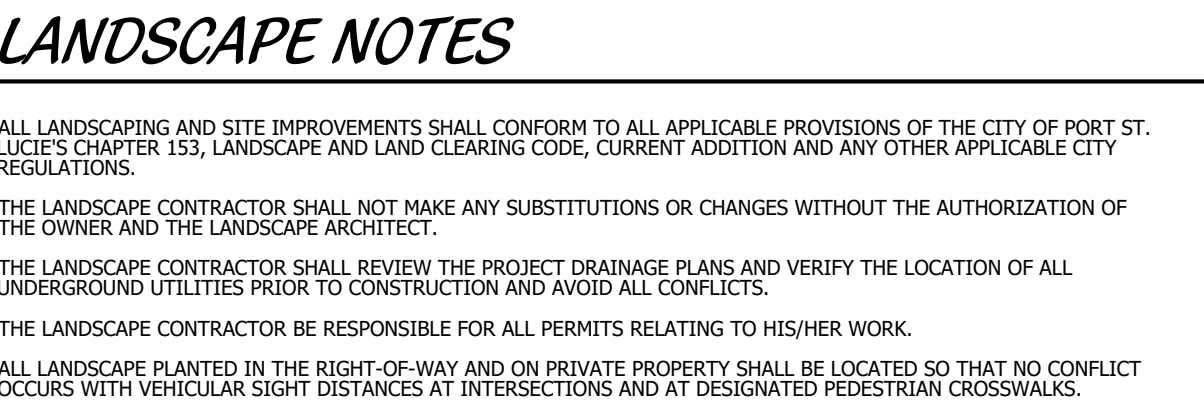
SHRUB/GROUNDCOVER PLANTING DETAIL



LARGE TREE PLANTING DETAIL



COACH LAMP (STREETLIGHTS)



LANDSCAPE NOTES

ALL LANDSCAPING AND SITE IMPROVEMENTS SHALL CONFORM TO ALL APPLICABLE PROVISIONS OF THE CITY OF PORT ST. LUCIE'S CHAPTER 153, LANDSCAPE AND LAND CLEARING CODE, CURRENT ADDITION AND ANY OTHER APPLICABLE CITY REGULATIONS.

THE LANDSCAPE CONTRACTOR SHALL NOT MAKE ANY SUBSTITUTIONS OR CHANGES WITHOUT THE AUTHORIZATION OF THE OWNER AND THE LANDSCAPE ARCHITECT.

THE LANDSCAPE CONTRACTOR SHALL REVIEW THE PROJECT DRAINAGE PLANS AND VERIFY THE LOCATION OF ALL UNDERGROUND UTILITIES PRIOR TO CONSTRUCTION AND AVOID ALL CONFLICTS.

THE LANDSCAPE CONTRACTOR IS RESPONSIBLE FOR ALL PERMITS RELATING TO HIS/HER WORK.

ALL LANDSCAPE PLANTED IN THE RIGHT-OF-WAY AND ON PRIVATE PROPERTY SHALL BE LOCATED SO THAT NO CONFLICT OCCURS WITH VEHICULAR SIGHT DISTANCES AT INTERSECTIONS AND AT DESIGNATED PEDESTRIAN CROSSWALKS.

NO FENCE, WALL, HEDGE, OR SHRUB PLANTING WHICH OBSTRUCTS SIGHT LINES AND ELEVATIONS BETWEEN TWO (2) AND SIX (6) FEET ABOVE THE CROWN OF THE ROAD SHALL BE PLACED OR PERMITTED TO REMAIN ON ANY CORNER LOT IN ANY ZONING DISTRICT WITHIN THE TRIANGULAR AREA FORMED BY THE STREET PROPERTY LINES AND A LINE CONNECTING THEM AT POINTS TWENTY-FIVE (25) FEET FROM THE INTERSECTION OF THE STREET LINES, OR IN THE CASE OF A ROUNDED PROPERTY CORNER FIVE (5) FEET FROM THE INTERSECTION OF THE PROPERTY LINES EXTENDED. THE SAME SIGHT LINE LIMITATIONS SHALL APPLY ON ANY LOT WITHIN TEN (10) FEET FROM THE EDGE OF A DRIVEWAY OR ALLEY. NO TREE SHALL BE PERMITTED TO REMAIN WITHIN THE ABOVE DESCRIBED LIMITS OF CLEARANCE UNLESS THE FOLIAGE IS MAINTAINED AT OR ABOVE SIX (6) FEET ABOVE THE ROADWAY INTERSECTION ELEVATION TO PREVENT OBSTRUCTION OF SIGHT LINES.

ALL LANDSCAPING SHALL BE LOCATED IN THE RIGHT-OF-WAY AND/OR ON PRIVATE PROPERTY SO THAT NO CONFLICT OCCURS WITH DESIGNATED CITY DRAINAGE AND /OR UTILITY EASEMENTS, OVERHEAD AND UNDERGROUND UTILITY LINES AND/OR UTILITY STRUCTURES. NO TREE ARE ALLOWED IN UTILITY EASEMENTS OR CLOSER THAN TEN FEET TO ANY CITY UTILITY LINES.

TREES AT ENTRANCEWAYS SHALL BE LIMBED UP TO MAXIMIZE SITE DISTANCE. CLEAR VISIBILITY SHALL BE MAINTAINED BETWEEN 24" AND 8". TREES SHALL BE POSITIONED TO AVOID CONFLICTS WITH SITE LIGHTING.

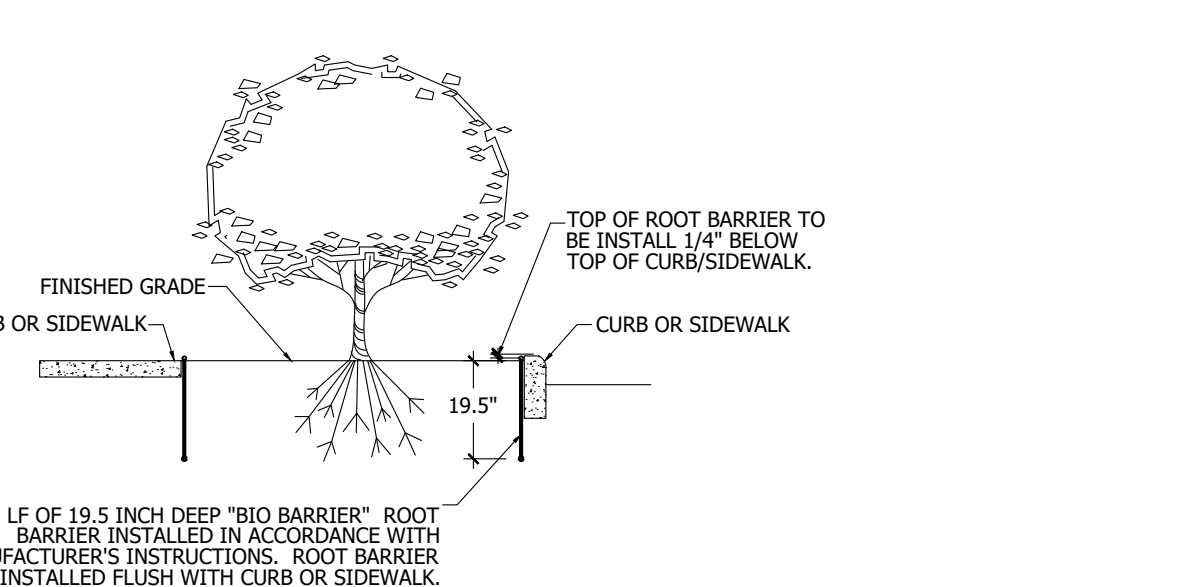
PLANTING ISLANDS WITHIN AND ADJACENT TO PARKING AREAS SHALL BE FREE OF LIME ROCK AND OTHER FOREIGN MATERIALS TO A DEPTH OF 30\"/>

THE SURFACE OF ALL AREAS TO RECEIVE LANDSCAPING WILL BE FINELY GRADED AND SET SO DIPS AND DEPRESSIONS ARE REMOVED AND POSITIVE DRAINAGE IS ACHIEVED. THE FINISHED GRADE OF SOD AND MULCH AREAS SHALL BE SET SO THAT MUD WASHOUTS DO NOT OCCUR AND THERE IS A SMOOTH TRANSITION FROM PAVED SURFACES TO ADJACENT LAWN AREAS.

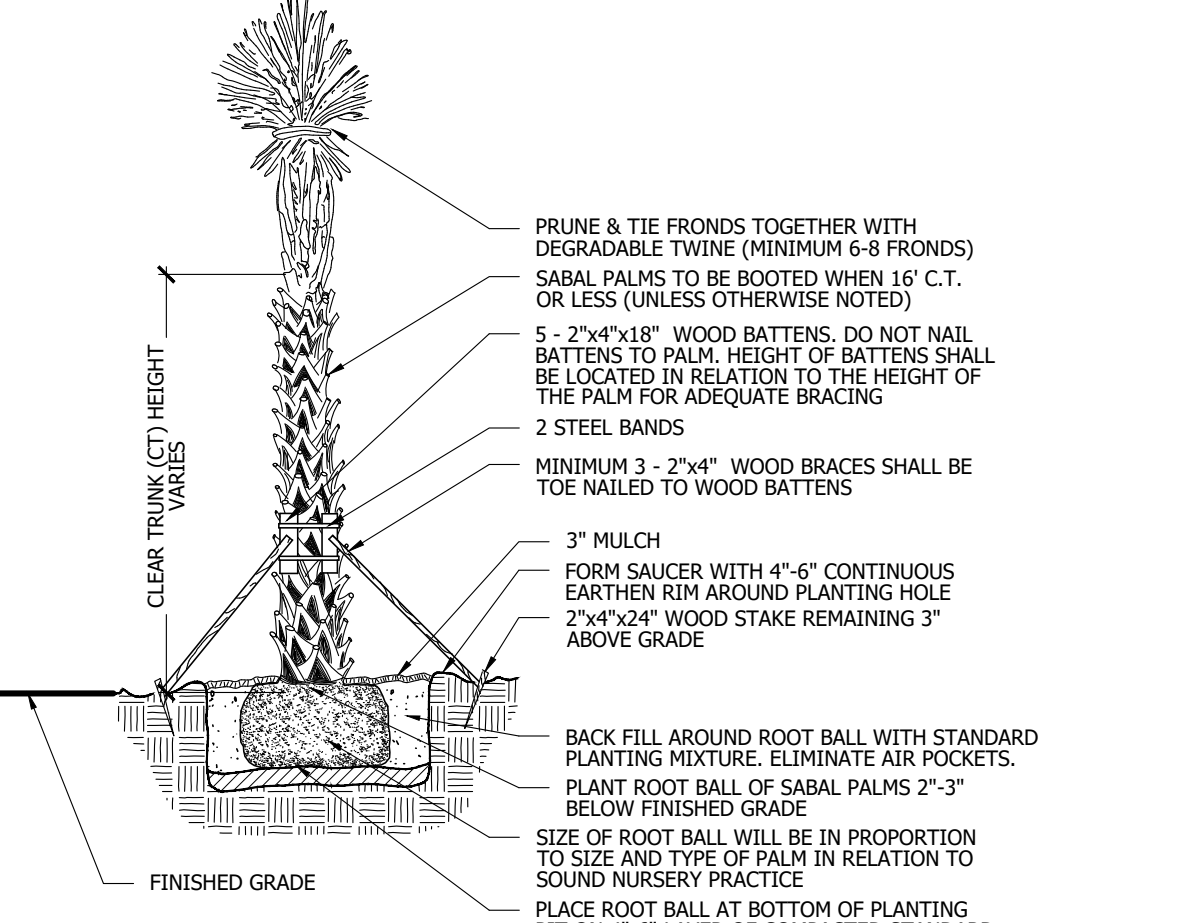
ALL AREAS SHALL BE FULLY IRRIGATED IN ACCORDANCE WITH THE REQUIREMENTS OF THE CITY OF PORT ST. LUCIE. IRRIGATION SHOR DRAWINGS SHALL BE SUBMITTED TO THE OWNER AND LANDSCAPE ARCHITECT FOR APPROVAL PRIOR TO CONSTRUCTION. THE IRRIGATION SYSTEM SHALL BE DESIGNED TO PROVIDE 100% OVERLAP COVERAGE TO ALL LANDSCAPE AND SOD AREAS.

THE IRRIGATION WATER SOURCE SHALL BE WELL WATER OR SUCTION FROM AN ONSITE STORMWATER MANAGEMENT AREA. THE IRRIGATION SYSTEM SHALL BE EQUIPPED WITH A RAIN SENSOR/CUT OFF SWITCH IN ACCORDANCE WITH STATE AND LOCAL REQUIREMENTS.

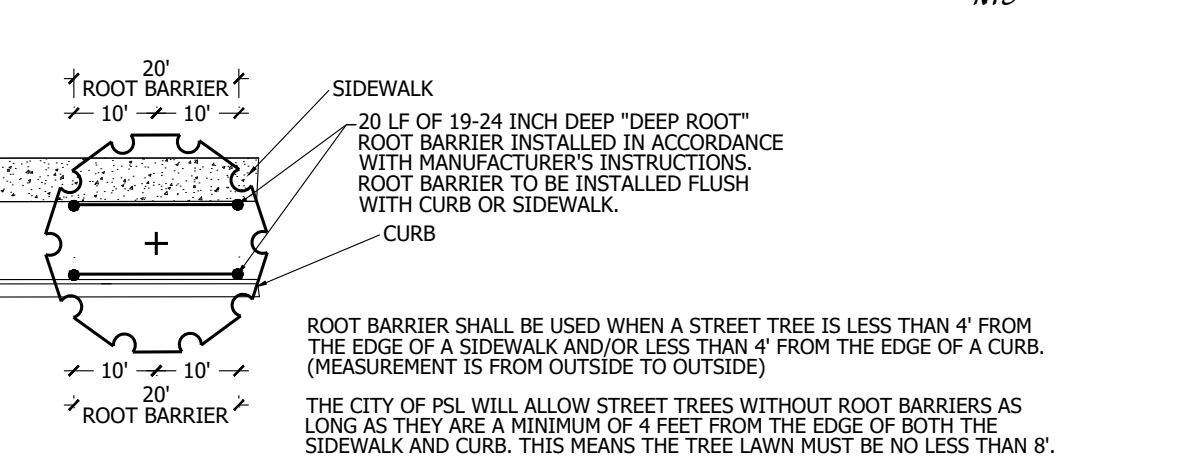
NO LIGHT POLE OR ASSOCIATED CONDUIT SHALL BE LOCATED WITHIN 5' OF A PSLUSD FACILITY.



ROOT BARRIER DETAIL



PALM PLANTING DETAIL



ROOT BARRIER DETAIL



ALL ABOVE GROUND UTILITIES I.E. TRANSFORMERS, SWITCH BOXES, AIR CONDITIONER, CONDENSERS, SHALL BE FULLY SCREENED FROM VIEW ON THREE SIDES WITH LANDSCAPING WHICH MUST EXTEND ONE FOOT HIGHER THAN THE TALLEST POINT OF SAID EQUIPMENT AT TIME OF PLANTING.

NO LANDSCAPING SHALL BE LOCATED WITHIN 10' OF A CITY LINE OR APPURTENANCE. ALL OTHER UTILITIES SHALL BE A MINIMUM OF 5' HORIZONTAL SEPARATION FROM CITY UTILITY MAINS FOR PARALLEL INSTALLATIONS AND A MINIMUM OF 18" BELOW CITY UTILITY MAINS. (ALL MEASUREMENTS ARE TAKEN FROM PARALLEL TO OUTSIDE)

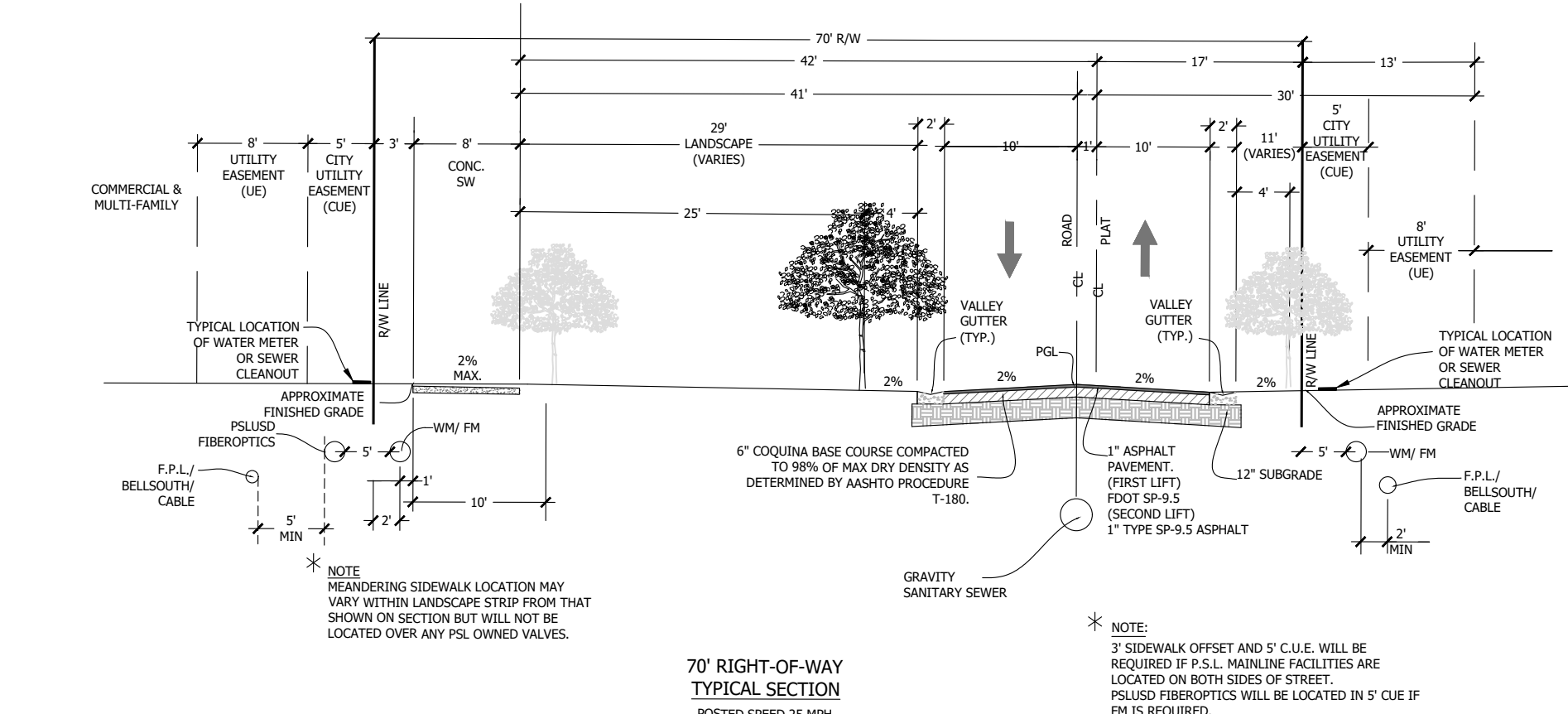
NO LANDSCAPING SHALL BE PLACED IN A MANNER THAT WOULD CREATE CONFLICTS WITH THE INTENDED OPERATION AND MAINTENANCE OF ANY EXISTING UTILITY.

ST. AUGUSTINE SOD WILL BE UTILIZED FOR ALL TURF AREAS, EXCEPT AS NOTED. BAHIA SOD WILL BE OPERATION IN DRY RETENTION AREAS AND IN AREAS OF EXISTING TREES TO REMAIN.

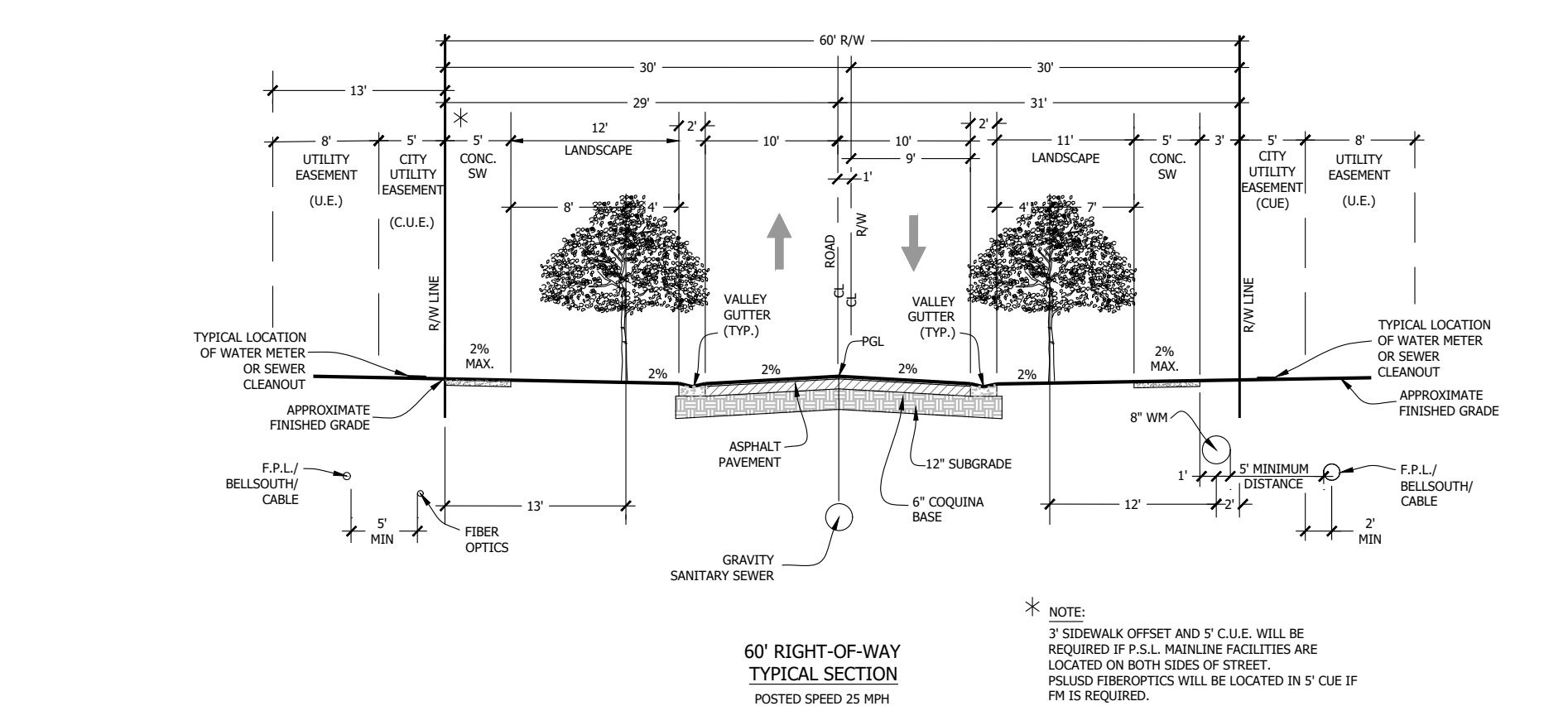
ALL TREES PLANTED UNDER OR ADJACENT TO FRPL POWERLINES WILL COMPLY WITH THE FRPL "RIGHT TREE, RIGHT PLACE" GUIDELINES.

GENERAL LANDSCAPE NOTES:
1. NO TREE OR OTHER INTRUSIVE ROOT PLANTINGS SHALL BE LOCATED WITHIN 10' OF A CITY UTILITY MAIN.
ALL OTHER UTILITIES SHALL BE A MINIMUM OF 5' HORIZONTAL SEPARATION FROM CITY UTILITY MAINS FOR PARALLEL INSTALLATIONS AND A MINIMUM OF 18" BELOW CITY UTILITY MAINS. (ALL MEASUREMENTS ARE TAKEN FROM OUTSIDE TO OUTSIDE).
2. NO LANDSCAPING SHALL BE PLACED IN A MANNER THAT WOULD CREATE CONFLICTS WITH THE INTENDED OPERATION AND MAINTENANCE OF ANY EXISTING OR PROPOSED WATER/WASTEWATER UTILITY LINES.
3. ALL LANDSCAPE MATERIAL TO BE FL NO. 1.
4. NO LANDSCAPING MEETS FOOT CLEAR ZONE AND SIGHT DISTANCE CRITERIA.
5. NO LANDSCAPING SHALL BE PLANTED IN SUCH A MANNER AS TO ADVERSELY AFFECT UTILITY INSTALLATION, OPERATION AND MAINTENANCE.
6. BERMS AND STRUCTURAL LANDSCAPE FEATURES SUCH AS LIME ROCK, FOUNDATIONS, SCULPTURE, DECORATIVE WALL AND TREE WELLS AND GENERALLY NOT ALLOWED IN PSLUSD EASEMENTS, BUT MAY BE REVIEWED ON A CASE BY CASE BASIS.
7. ALL MEASUREMENTS ARE FROM OUTSIDE TO OUTSIDE, NOT CENTERLINE TO CENTERLINE. EXAMPLE: OUTSIDE OF PIPE TO NEAREST POINT ON TREE TRUNK.
8. TREES SHALL NOT BE PLANTED WITHIN 10 FEET OF ANY PSLUSD MAINS OR APPURTENANCES.
9. NO LANDSCAPING OTHER THAN SOD GRASSES MAY BE PLANTED WITHIN A 5' RADIUS MAINTENANCE AREA OF ANY PSLUSD APPURTENANCE SUCH AS WATER METERS, BACKFLOW DEVICES, FIRE HYDRANTS, SANITARY SEWER CLEANOUTS, AND MANHOLES, AIR RELEASE VALVES, ETC.
10. ALL LANDSCAPING WITHIN PORT ST. LUCIE UTILITY SYSTEMS DEPARTMENT (PSLUSD) UTILITY EASEMENTS SHALL COMPLY WITH PSLUSD TECHNICAL SPECIFICATIONS, POLICES, AND CODES. TREES SHALL NOT BE PLANTED WITHIN TEN (10) FEET OF ANY PSLUSD UNDERGROUND INFRASTRUCTURE.

TYPICAL 70' RIGHT-OF-WAY SECTION

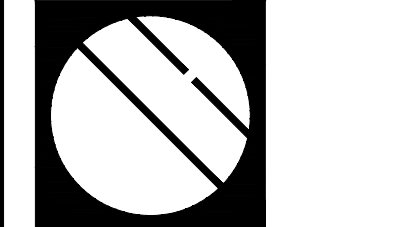


TYPICAL 60' RIGHT-OF-WAY SECTION



PLANT LIST

TREES	QTY	BOTANICAL NAME	COMMON NAME	CONT	CAL	SIZE	NATIVE	REMARKS
	3	BURSERA SIMARUBA	GHIBDO LIMBO	NA	4" CAL	2" x 2"	N	FULL CANOPY
	8	CLUSIA GUTTIFERA	SMALL-LEAF CLUSIA	45 GAL	2" CAL	6-7" HT, 4.5" SPRD	N	SINGLE TRUNK, STANDARD
	47	ELEOCHARIS DECIPENS	JAPANESE BLUEBERRY TREE	45 GAL	3" CAL	12" O.A.	Y	CONICAL, FULL TO BASE, MATCHED
	39	LIQUIDTRUM JAPONICUM	JAPANESE PRIVET	45 GAL	2" CAL	8" HT, 8" SPRD.	Y	FULL CANOPY, 4" CT. MULTI-TRUNK
	6	QUERCUS VIRGINIANA	SOUTHERN LIVE OAK	FIELD GROWN	10"-12" MIN.	25" O.A.	Y	FLORIDA #1, DOUBLE DUG ROOT BALL
	495	QUERCUS VIRGINIANA	SKY CLIMBER LIVE OAK	NA	3" CAL	14" O.A.	Y	FULL CANOPY, DOUBLE DUG
PALM TREES	QTY	BOTANICAL NAME	COMMON NAME	CONT	CAL	SIZE	NATIVE	REMARKS
	19	CHAMAEOROPUS HUMILIS	EUROPEAN FAN PALM	45 GAL	NA	5" O.A., 5" SPRD	N	FOUR STEM MIN., LIMB UP 2"
	9	ROYSTONEA ELEGATA	ROYAL PALM	FIELD GROWN	NA	18" CT.	Y	FULL CANOPY, FLORIDA QUERCUS
	82	ZAMIA FLORIDANA	CURVED CABBAGE PALM	NA	NA	10", 16", OR 22" CT., STGG	Y	STROKE, UNIQUE CURVES, SLICK TRUNKS
SHRUBS	QTY	BOTANICAL NAME	COMMON NAME	CONT	SIZE	SPACE	NATIVE	REMARKS
	78	CLUSIA GUTTIFERA	SMALL-LEAF CLUSIA	15 GAL	5" - 6" O.A.	3" - 4" O.C.	N	FULL & THICK, FLORIDA FANCY
	51	JUNIPERUS CHINENSIS	SPARTAN JUNIPER	B & B	8" - 10" O.A. HT.	AS	N	CONICAL, FULL TO BASE, MATCHED SPECIMEN, MATCHED
	12	ZAMIA FLORIDANA	COOKTEE PALM	15 GAL	2" x 3"	AS	Y	FULL & THICK
GROUND COVERS	QTY	BOTANICAL NAME	COMMON NAME	CONT	SIZE	SPACE	NATIVE	REMARKS
	1,130	CARISSA MACROCARPA	'GREEN CARPET'	3 GAL	2" x 2"	2" OC	Y	FULL & THICK
	382	CHRYSOBALANUS ICCACO	GREEN COCOPLUM	5 GAL	3" X 1.5"	2" OC	Y	FULL & THICK
	268	CHRYSOBALANUS ICCACO	RED TIP COCOPLUM	3 GAL	1.5" X 1.5"	2.5" OC	Y	FULL & THICK
	187	CLUSIA GUTTIFERA	'NANA'	3 GAL	2" x 2"	2" OC	Y	FULL & THICK, FLORIDA FANCY
	1,773	FIGUS MACROPHYLLA	'GREEN ISLAND'	3 GAL	2" x 2"	2" OC	Y	FULL & THICK, FLORIDA FANCY
	DVS	ILEX VOMITORIA	'STOKES DWARF'	3 GAL	2" x 2"	2" OC	N	FULL & THICK
	1,621	JUNIPERUS CHINENSIS	'PARSONS'	3 GAL	1" HT, X 1.5" SPRD.	1.5" OC	N	FULL & THICK
	252	MULLENBERGIA CAPILLARIS	PINK MUILY GRASS	3 GAL	2" x 2"	2" OC	Y	FULL & THICK
	481	PODOCARPUS MACR.	'FRINGLES'	3 GAL	1.5" x 1.5"	2" OC	N	FULL & THICK
	131	ROSA 'MEIGALDI'	RED DROPT ROSE	3 GAL	1.5" x 1.5"	2" OC	N	FULL & THICK, UNIFORM GROWTH
	1,407	SCHAEFLERA AMBROICOLA	'TRINETTE'	3 GAL	1.5" x 1.5"	2" OC	N	FULL & THICK
	265	SERENOA REPENS	'CINEREA'	15 GAL	2" x 2"	2" OC	Y	FULL & THICK
	73	SPARTINA BAKERS	SAND CORD GRASS	3 GAL	2" x 2"	2.5" OC	Y	FULL & THICK
	623	TRIPSACUM FLORIDANA	DWARF FAKAHATCHEE GRASS	3 GAL	2" x 2"	2.5" OC	N	FULL & THICK



Cotleur & Hearing

Landscape Architects
Land Planners
Environmental Consultants
1934 Commerce Lane
Suite 1
Jupiter, Florida 33458
561.747.6336 - Fax 747.1377
www.cotleurhearing.com
Lic# LC-C000239

VERANO SOUTH
Koiter Homes
Port St. Lucie, Florida

DESIGNED	DTS
DRAWN	LAH
DATE	01-06-21
REVISIONS	02-05-21
	04-02-21

PSLUD # 11-652-33C
PSL PROJ# 21-004
POD D PLAT 4
Landscape Details