

PLANT SCHEDULE PHASE 2B

TREES	CODE	QTY	BOTANICAL NAME	COMMON NAME	SPECS	FIELD2	FIELD4	FIELD5
	CE	114	Conocarpus erectus	Buttonwood	FG, 14' HT x 6" SPR, 3" C, SP, HO, 4" CT			
	QV4	60	Quercus virginiana	Southern Live Oak	FG, 16'-18' HT, 8" SPR, 4" C, SP, HO			
	SP	114	Sabal palmetto	Sabal Palm	FG, 10'-18" CT HT, HV CAL, SP, HC	10'-18" CT	HVY CAL, SP	Native
SHRUBS	CODE	QTY	BOTANICAL NAME	COMMON NAME	SPECS			
	CHR	1,874	Chrysobalanus icaco 'Red Tip'	Red Tip Cocophlum	3G, 24" HT, 18" W, F, Native			

GENERAL LANDSCAPE NOTES:

- At least 50% of all required trees shall be of a native species.
- All plant material to be Florida No. 1 or better.
- All landscape & sod areas to be irrigated by an automated system that provides 100% coverage with 100% overlap with a minimum d.u. of .70.
- All landscaping at intersection and corners complies with Section 158.204 of the Port St Lucie Code of Ordinances to provide a clear sight zone between 2' - 6' above the final road crown elevation. All hedges and shrubs with in the 25' sight triangle will be maintained at a height no higher than 2' above the crown elevation of the road. In addition, the foliage line any tree within the 25' sight triangle will maintained at a height of no less than 6' above the road crown.
- Street tree locations may occur within 5' Landscape Easement as shown on civil engineering plans and may be adjusted based on final utility, sidewalk, and driveway locations.
- Where applicable, street trees requiring root barriers shall be installed per manufacturer specifications, see detail on sheet LA-8.
- Berm landscape to be field adjusted according to final grading and top of berm locations.
- Final cul-de-sac street tree locations to be determined on site.
- See Engineer's plans for all utility locations.

PSLUSD NOTES FOR LANDSCAPE PLANS

- All new landscaping within utility easements and within ten (10) feet of underground utility infrastructure shall comply with PSLUSD technical specifications, policies, and codes.
- No landscaping other than sod grasses may be planted within a 5' radius maintenance area of any utility appurtenances such as water meters, backflow devices, fire hydrants, sanitary sewer cleanouts, and manholes, air release valves, etc. Trees shall not be planted within ten (10) feet of any underground infrastructure.
- No landscaping shall be planted in such a manner as to adversely affect utility installation, operation and maintenance.

Index of Drawings:

Cover Sheet	CV
Plant Schedule	CV
Landscape Plans	LA-1 - LA5
Typical Buffer Landscape Plan	LA-6
Typical Lot Landscape Plans	LA-7
Landscape Details	LA-8
Landscape Specifications	LA-9

STREET TREE DATA

Required Street Tree Credits per PSL Code	114
Section 156.121: 2,825 lf @ 2 x (1 tree per 50 lf)	
Proposed Trees 14'x6":	
Conocarpus erectus 'Green Buttonwood' FG 14' HT x 6" SPR, 3" C, SP, HO	114

PERIMETER LANDSCAPE DATA

Required Street Tree Credits per PSL Code	114
2,578 lf (1 tree per 30 lf)	
2,578 lf (1 shrub per 2 lf)	1,289
Proposed Trees:	94
Live Oak FG 14' HT x 6" SPR, 3" C, SP, HO	60
(including 102 palms @ 3:1)	34
Proposed Shrubs:	1,865

*Location of street trees may vary due to the location of driveways and field verification of underground utilities

Key / Location:



Project Team:

Client & Property Owner:	Mattamy Homes, LLC 1500 Gateway Blvd, Suite 220 Boynton Beach, FL 33426
Landscape Architect:	Lucido & Associates 701 E Ocean Boulevard Stuart, FL 34994
Engineer:	Kimley Horn 445 24th Street, Suite 200 Vero Beach, FL 32960

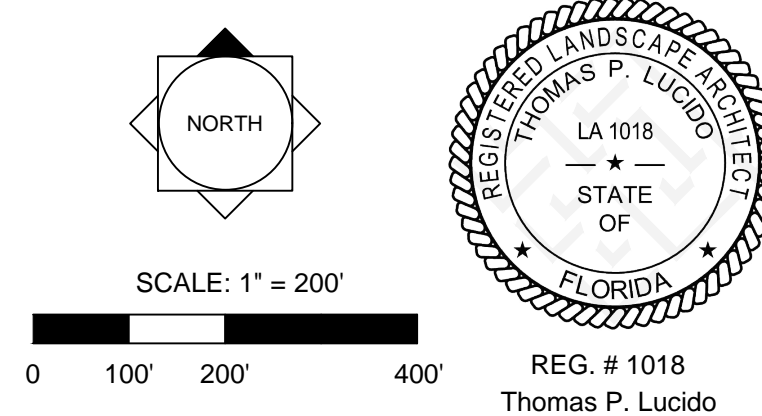
Pulte at Tradition
Phase 2B
Landscape Plan

Port St. Lucie, Florida
June 16, 2021

Cover Sheet

City of Port St. Lucie P21-137
PSLUD No. 5308D

Date	By	Description
10/08/21	SAW	Response to SPRC comments
12/03/21	MRY	Response to SPRC comments



SCALE: 1" = 200'
0 100' 200' 400'

Designer	JJ	Sheet
Manager	SG	
Project Number	17-640	
Municipal Number	P21-137	
Computer File	17-640 Pulte at Tradition - Phase 2B - Code I	

Drawing Name: J:\Projects Active\17-640 Pulte @ Tradition\Landscape\ Dec 02, 2021 - 3:34pm 17-640 Pulte at Tradition - Phase 2B - Code Landscape.dwg

Key / Location:



Project Team:

Client & Property Owner: Mattamy Homes, LLC
 1500 Gateway Blvd, Suite 220
 Boynton Beach, FL 33426

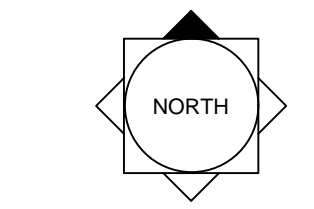
Landscape Architect: Lucido & Associates
 701 E Ocean Boulevard
 Stuart, FL 34994

Engineer: Kimley Horn
 445 24th Street, Suite 200
 Vero Beach, FL 32960

**Pulte at Tradition
 Phase 2B
 Landscape Plan**

Port St. Lucie, Florida
 June 16, 2021
 Landscape Plan
 City of Port St. Lucie P21-137
 PSLUD No. 5308D

Date	By	Description
10/08/21	SAW	Response to SPRC comments
12/03/21	MRY	Response to SPRC comments



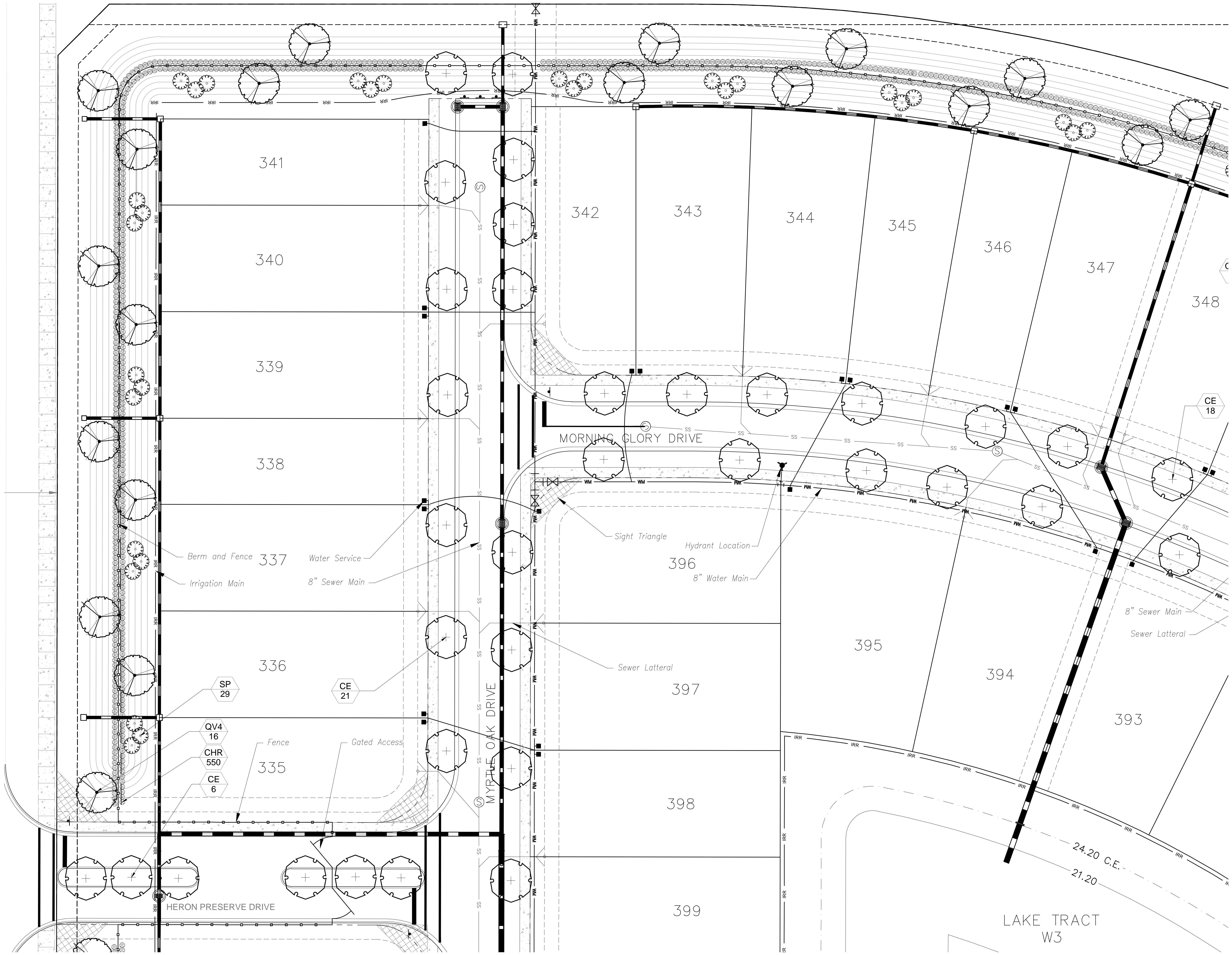
SCALE: 1" = 20'
 0 10' 20' 40'

REG. # 1018
 Thomas P. Lucido

Designer JJ
 Manager SG
 Project Number 17-640
 Municipal Number P21-137
 Computer File 17-640 Pulte at Tradition - Phase 2B - Code I

Sheet
LA-1

© Copyright Lucido & Associates. These documents and their contents are the property of Lucido & Associates. Any reproductions, revisions, modifications or use of these documents without the express written consent of Lucido & Associates is prohibited by law.



Drawing Name: J:\Projects Active\17-640 Pulte @ Tradition\Landscape\ Dec 02, 2021 - 3:34pm 17-640 Pulte at Tradition - Phase 2B - Code Landscape.dwg

Key / Location:



Project Team:

Client & Property Owner: Mattamy Homes, LLC
 1500 Gateway Blvd, Suite 220
 Boynton Beach, FL 33426

Landscape Architect: Lucido & Associates
 701 E Ocean Boulevard
 Stuart, FL 34994

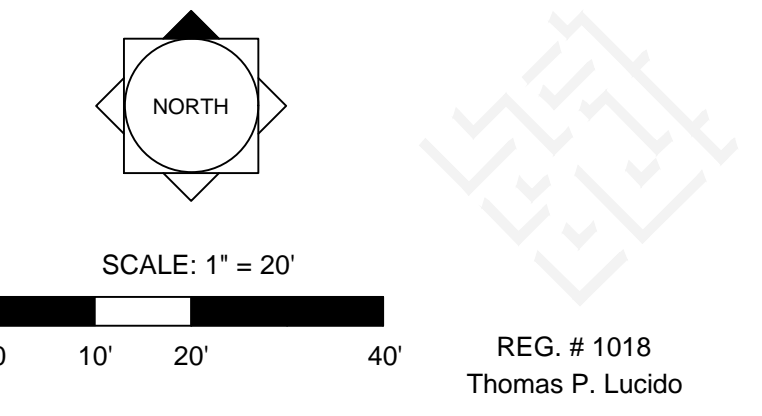
Engineer: Kimley Horn
 445 24th Street, Suite 200
 Vero Beach, FL 32960

**Pulte at Tradition
 Phase 2B
 Landscape Plan**

Port St. Lucie, Florida
 June 16, 2021

Landscape Plan
 City of Port St. Lucie P21-137
 PSLUD No. 5308D

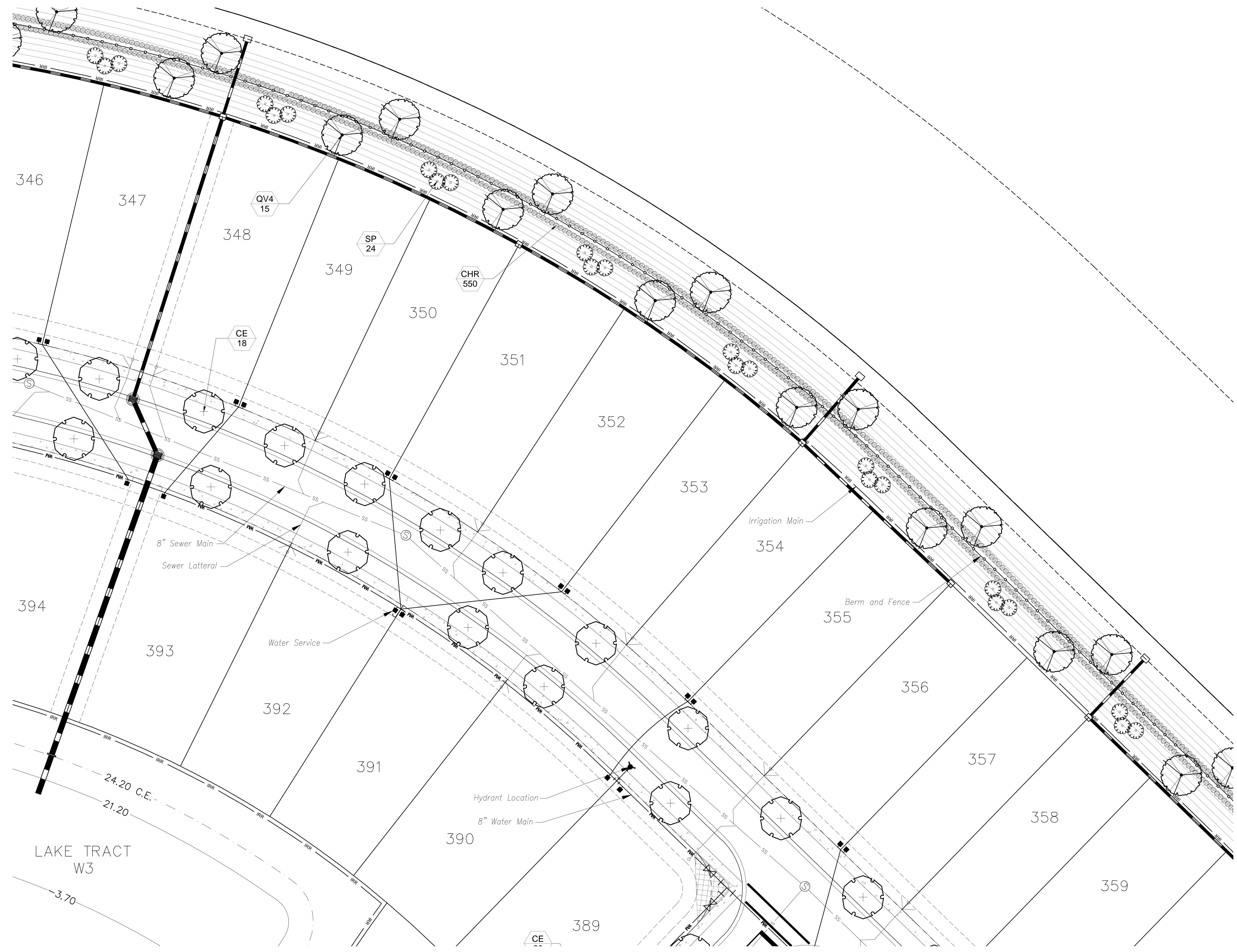
Date	By	Description
10/08/21	SAW	Response to SPRC comments
12/03/21	MRY	Response to SPRC comments



Designer JJ
 Manager SG
 Project Number 17-640
 Municipal Number P21-137
 Computer File 17-640 Pulte at Tradition - Phase 2B - Code I

Sheet
LA-2

© Copyright Lucido & Associates. These documents and their contents are the property of Lucido & Associates. Any reproductions, revisions, modifications or use of these documents without the express written consent of Lucido & Associates is prohibited by law.



Drawing Name: J:\Projects Active\17-640 Pulte @ Tradition\Landscape\ Dec 02, 2021 - 3:34pm 17-640 Pulte at Tradition - Phase 2B - Code Landscape.dwg

Key / Location:



Project Team:

Client & Property Owner: Mattamy Homes, LLC
 1500 Gateway Blvd, Suite 220
 Boynton Beach, FL 33426

Landscape Architect: Lucido & Associates
 701 E Ocean Boulevard
 Stuart, FL 34994

Engineer: Kimley Horn
 445 24th Street, Suite 200
 Vero Beach, FL 32960

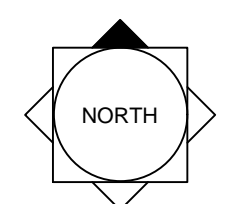
Pulte at Tradition Phase 2B Landscape Plan

Port St. Lucie, Florida
 June 16, 2021

Landscape Plan

City of Port St. Lucie P21-137
 PSLUD No. 5308D

Date	By	Description
10/08/21	SAW	Response to SPRC comments
12/03/21	MRY	Response to SPRC comments



SCALE: 1" = 20'
 0 10' 20' 40'

REG. # 1018
 Thomas P. Lucido

Designer	JJ	Sheet	LA-3
Manager	SG		
Project Number	17-640		
Municipal Number	P21-137		
Computer File	17-640 Pulte at Tradition - Phase 2B - Code I		

© Copyright Lucido & Associates. These documents and their contents are the property of Lucido & Associates. Any reproductions, revisions, modifications or use of these documents without the express written consent of Lucido & Associates is prohibited by law.

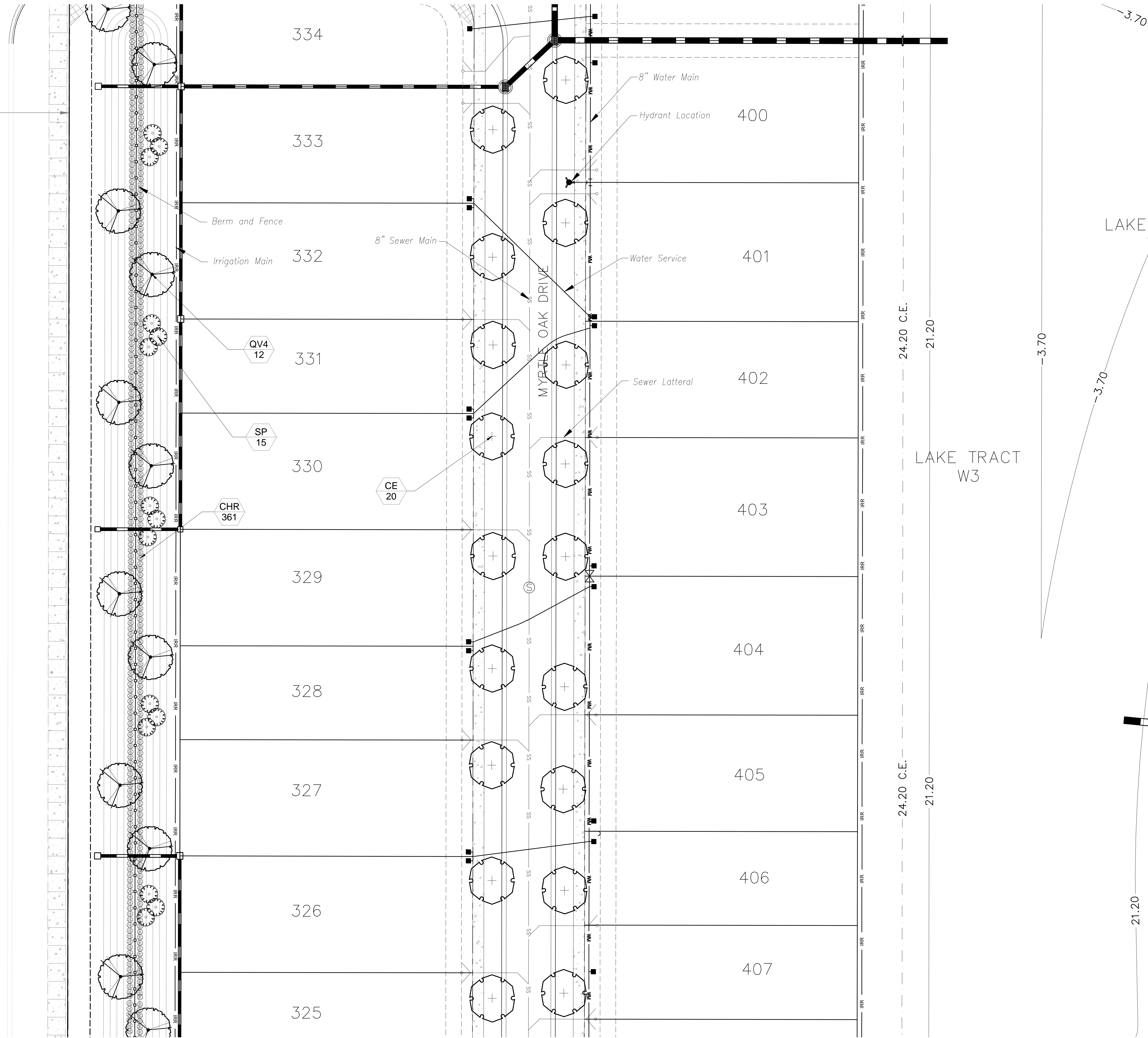


Drawing Name: J:\Projects Active\17-640 Pulte @ Tradition\landscape\17-640 Pulte at Tradition - Phase 2B - Code Landscape.dwg

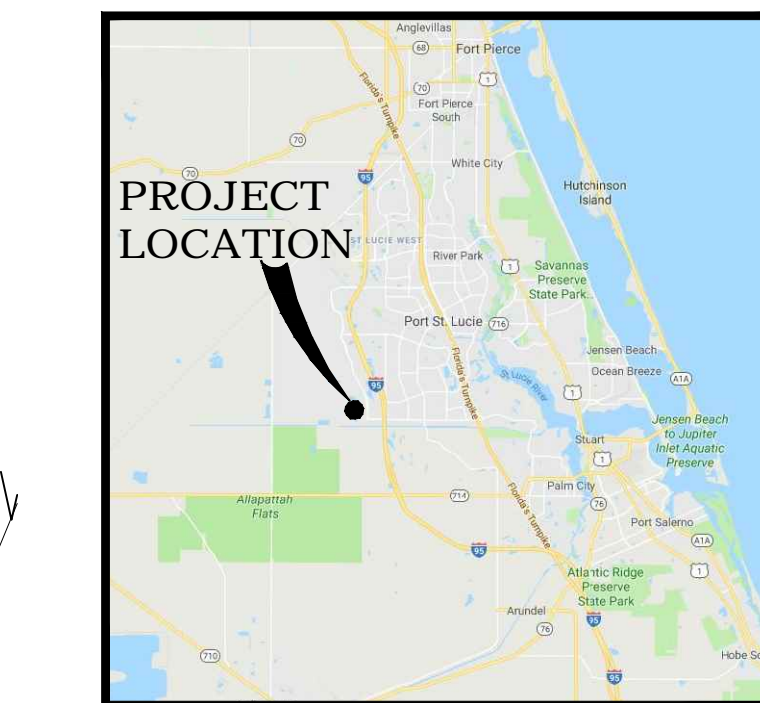
Drawing Name: J:\Projects Active\17-640 Pulte @ Tradition\Landscape\ Dec 02, 2021 - 3:34pm 17-640 Pulte at Tradition - Phase 2B - Code Landscape.dwg

150' R/W

SW COMMUNITY BLVD
(105' R/W)



Key / Location:



Project Team:

Client & Property Owner: Mattamy Homes, LLC
1500 Gateway Blvd, Suite 220
Boynton Beach, FL 33426

Landscape Architect: Lucido & Associates
701 E Ocean Boulevard
Stuart, FL 34994

Engineer: Kimley Horn
445 24th Street, Suite 200
Vero Beach, FL 32960

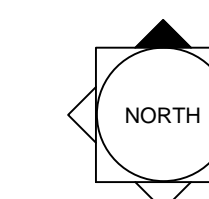
Pulte at Tradition Phase 2B Landscape Plan

Port St. Lucie, Florida
June 16, 2021

Landscape Plan

City of Port St. Lucie P21-137
PSLUD No. 5308D

Date	By	Description
10/08/21	SAW	Response to SPRC comments
12/03/21	MRY	Response to SPRC comments



SCALE: 1" = 20'
0 10' 20' 40'

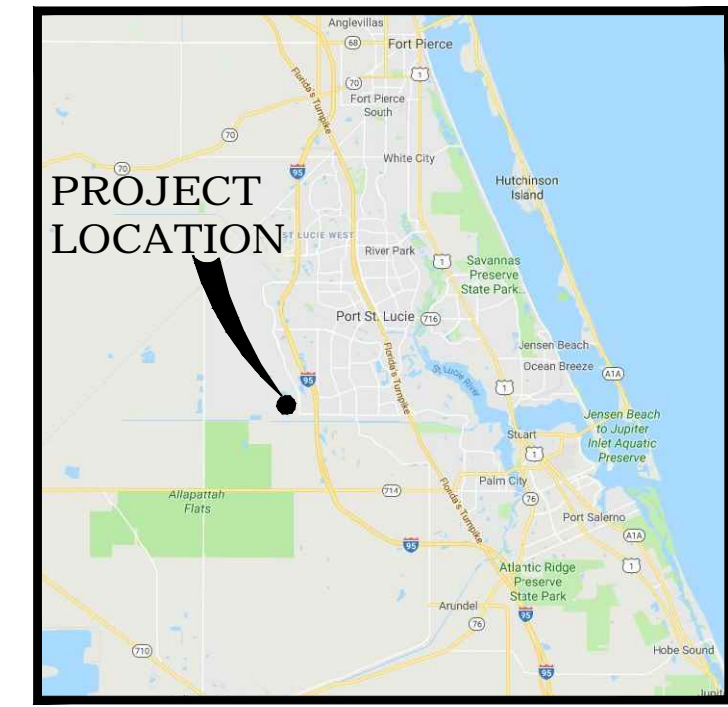
REG. # 1018
Thomas P. Lucido

Designer JJ Sheet
Manager SG
Project Number 17-640
Municipal Number P21-137
Computer File 17-640 Pulte at Tradition - Phase 2B - Code I

LA-4

Drawing Name: J:\Projects Active\17-640 Pulte @ Tradition\Landscape\ Dec 02, 2021 - 3:34pm 17-640 Pulte at Tradition - Phase 2B - Code Landscape.dwg

Key / Location:



N.T.S.

Project Team:

Client & Property Owner: Mattamy Homes, LLC
1500 Gateway Blvd, Suite 220
Boynton Beach, FL 33426

Landscape Architect: Lucido & Associates
701 E Ocean Boulevard
Stuart, FL 34994

Engineer: Kimley Horn
445 24th Street, Suite 200
Vero Beach, FL 32960

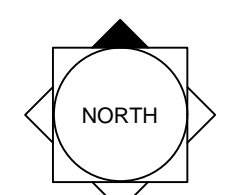
Pulte at Tradition Phase 2B Landscape Plan

Port St. Lucie, Florida
June 16, 2021

Landscape Plan

City of Port St. Lucie P21-137
PSLUD No. 5308D

Date	By	Description
10/08/21	SAW	Response to SPRC comments
12/03/21	MRY	Response to SPRC comments



SCALE: 1" = 20'

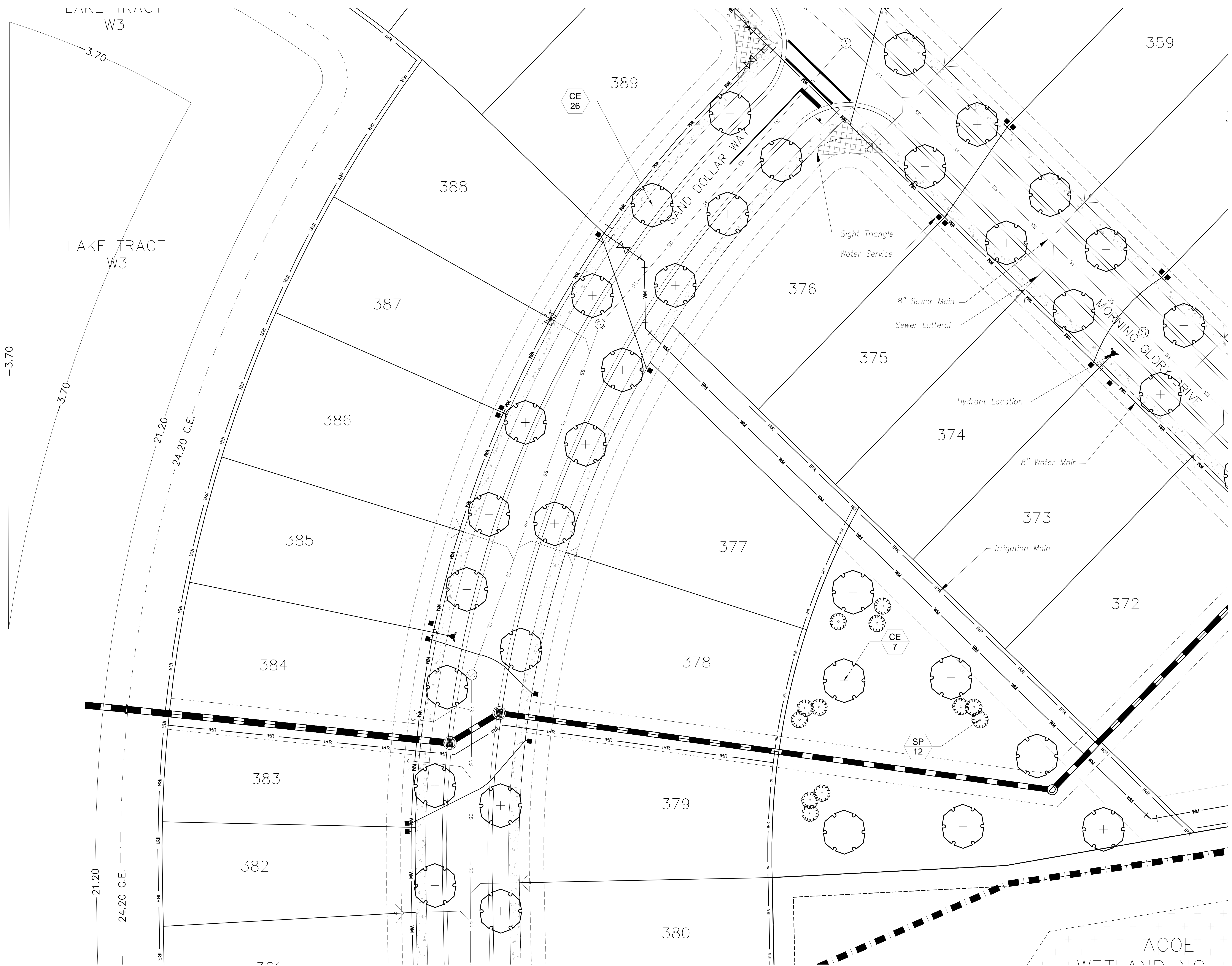


REG. # 1018
Thomas P. Lucido

Designer JJ
Manager SG
Project Number 17-640
Municipal Number P21-137
Computer File 17-640 Pulte at Tradition - Phase 2B - Code I

Sheet
LA-5

© Copyright Lucido & Associates. These documents and their contents are the property of Lucido & Associates. Any reproductions, revisions, modifications or use of these documents without the express written consent of Lucido & Associates is prohibited by law.



Key / Location:

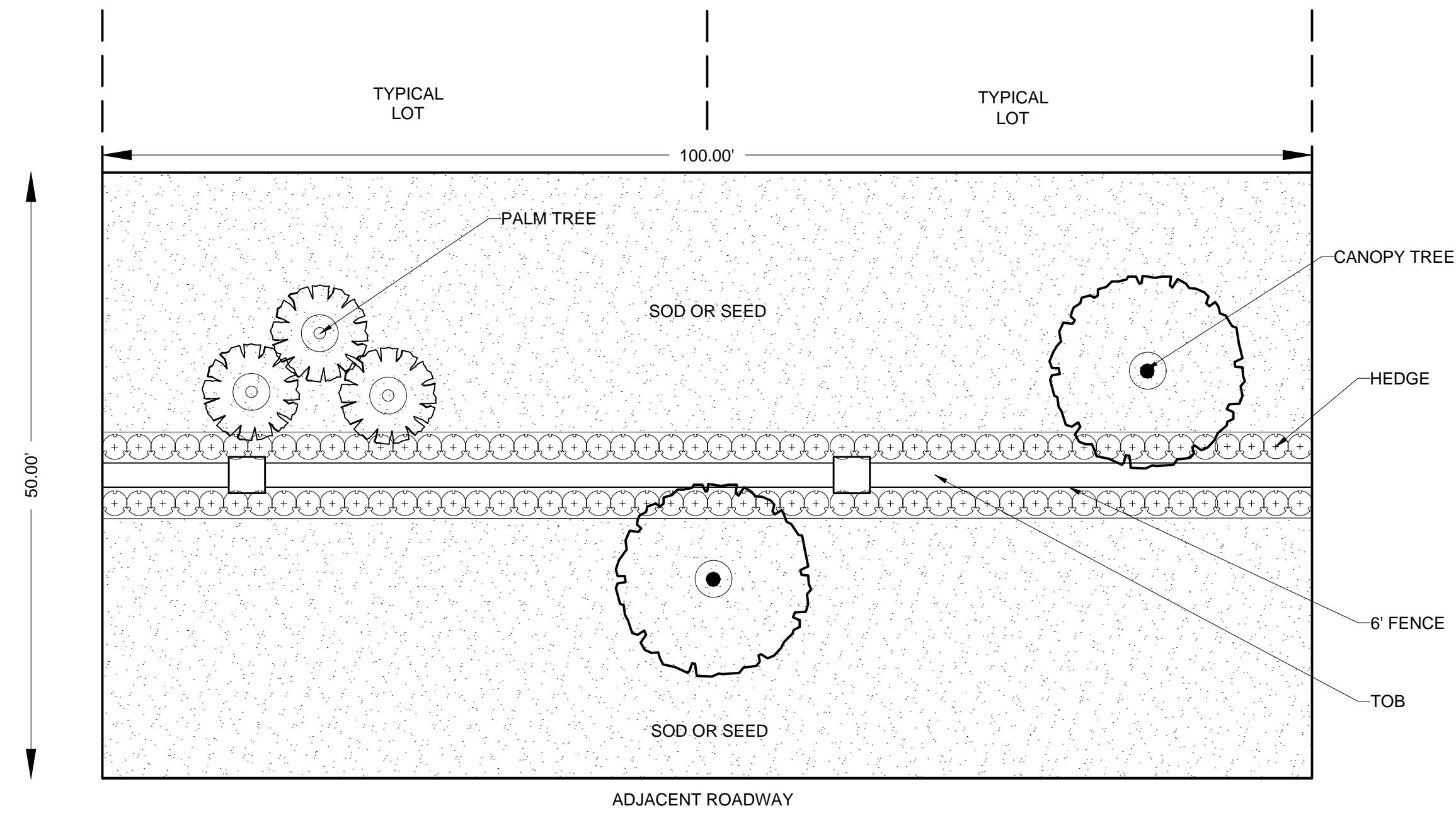


Project Team:

Client & Property Owner: Mattamy Homes, LLC
 1500 Gateway Blvd, Suite 220
 Boynton Beach, FL 33426

Landscape Architect: Lucido & Associates
 701 E Ocean Boulevard
 Stuart, FL 34994

Engineer: Kimley Horn
 445 24th Street, Suite 200
 Vero Beach, FL 32960



PLANT SCHEDULE TYPICAL BUFFER

TREES	QTY	BOTANICAL NAME	COMMON NAME	SPECS	FIELD2
	2	Quercus virginiana	Southern Live Oak	FG, 16'-18' HT, 8" SPR, 4" C, SP, HO	14' HT
	3	Sabal palmetto	Sabal Palm	FG, 10'-18' CT HT, HV CAL, SP, HC	10'-18' CT
SHRUBS	QTY	BOTANICAL NAME	COMMON NAME	SPECS	
	100	Chrysobalanus icaco 'Red Tip'	Red Tip Cocoplum	3G, 24" HT, 18" W, F, Native	

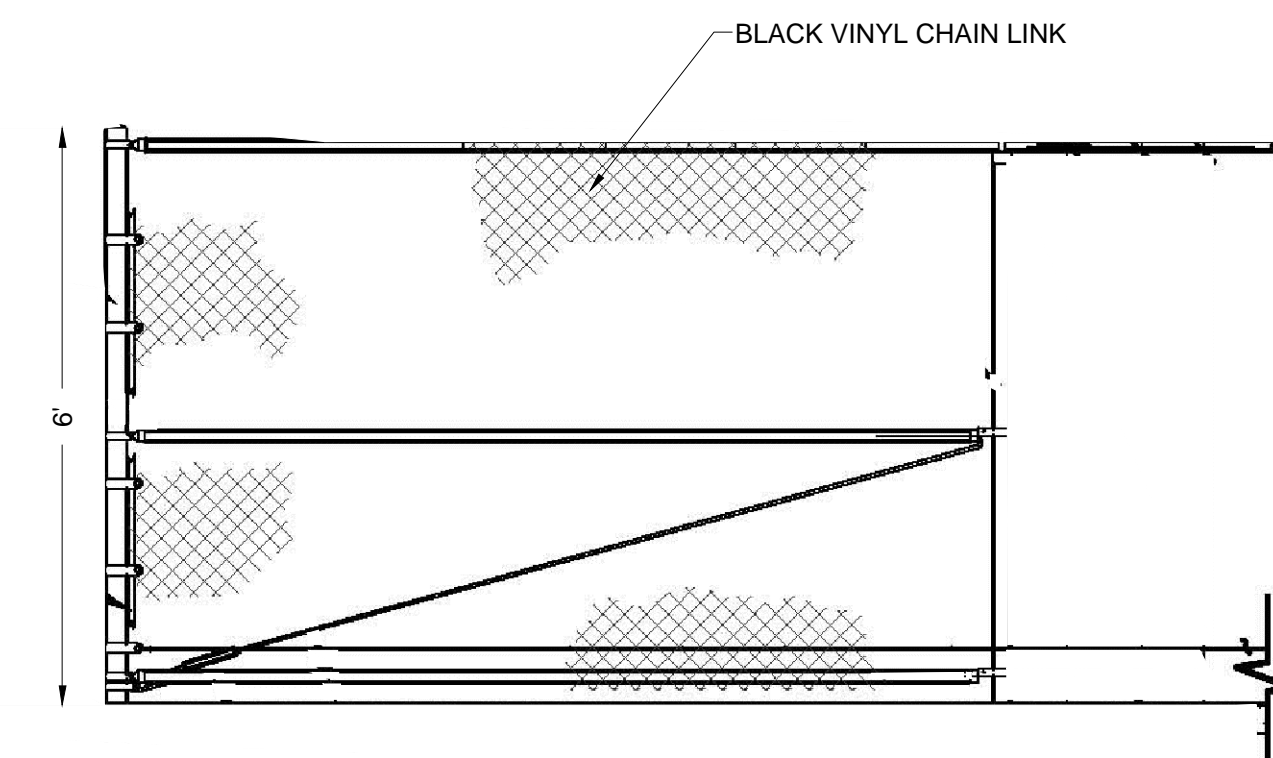
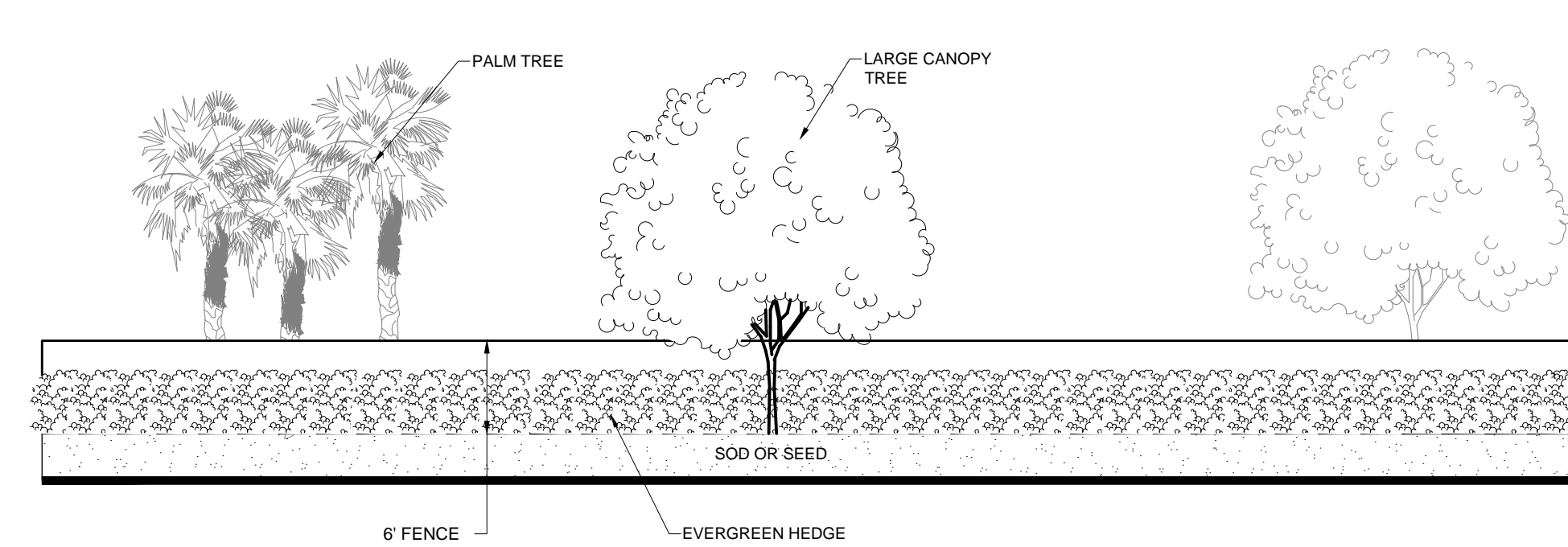
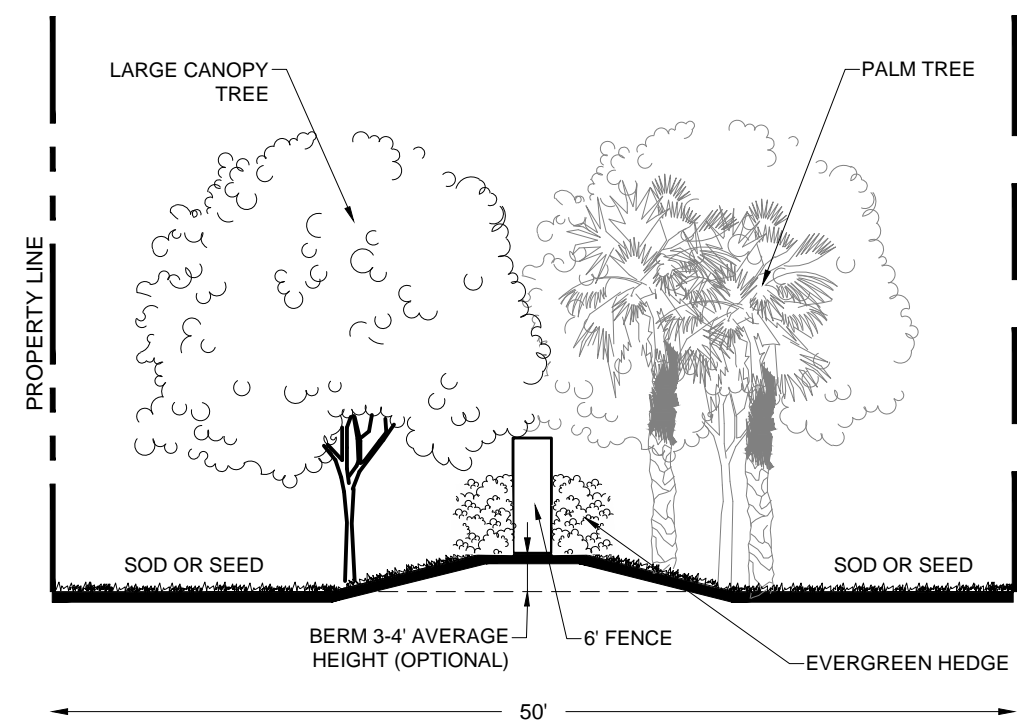
Typical 100' Landscape Buffer
 Scale: 1" = 10'-0"

Typical 100' Landscape Buffer Plant List

**Pulte at Tradition
 Phase 2B
 Landscape Plan**

Port St. Lucie, Florida
 June 16, 2021
 Typical Buffer
 Landscape Plan
 City of Port St. Lucie P21-137
 PSLUD No. 5308D

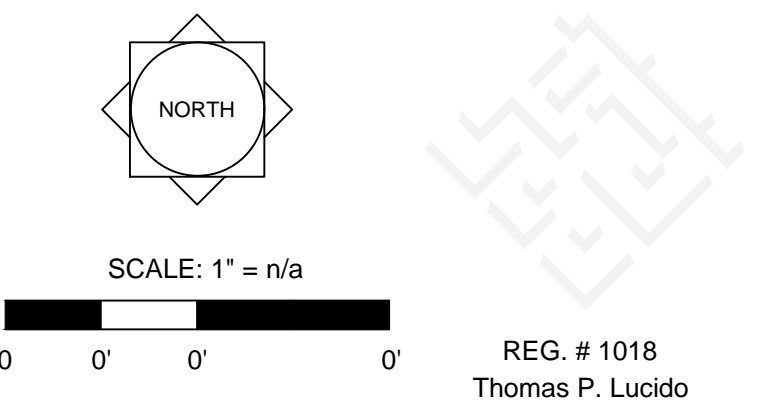
Date	By	Description
10/08/21	SAW	Response to SPRC comments
12/03/21	MRY	Response to SPRC comments



Typical Landscape Buffer Section
 Scale: 1" = 10'-0"

Typical Landscape Buffer Elevation
 Scale: 1" = 10'-0"

Typical Chain Link Fence Detail
 Scale: 1/2" = 1'-0"



Designer JJ Sheet
 Manager SG
 Project Number 17-640
 Municipal Number P21-137
 Computer File 17-640 Pulte at Tradition - Phase 2B - Code I

LA-6

NOTES:
 OPTIONAL DESIGN ELEMENTS SUCH AS BERM ELEVATION, FENCE OR WALL, AND SPECIES SUBSTITUTIONS WILL BE PROVIDED AT TIME OF FINAL PLAT.

Drawing Name: J:\Projects Active\17-640 Pulte @ Tradition\Landscape\ Dec 02, 2021 - 3:34pm 17-640 Pulte at Tradition - Phase 2B - Code Landscape.dwg

Key / Location:



Project Team:

Client & Property Owner: Mattamy Homes, LLC
 1500 Gateway Blvd, Suite 220
 Boynton Beach, FL 33426

Landscape Architect: Lucido & Associates
 701 E Ocean Boulevard
 Stuart, FL 34994

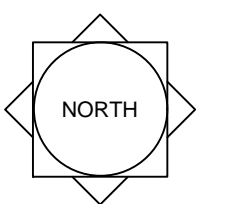
Engineer: Kimley Horn
 445 24th Street, Suite 200
 Vero Beach, FL 32960

Pulte at Tradition Phase 2B Landscape Plan

Port St. Lucie, Florida
 June 16, 2021
 Typical Lot
 Landscape Plans

City of Port St. Lucie P21-137
 PSLUD No. 5308D

Date	By	Description
10/08/21	SAW	Response to SPRC comments
12/03/21	MRY	Response to SPRC comments

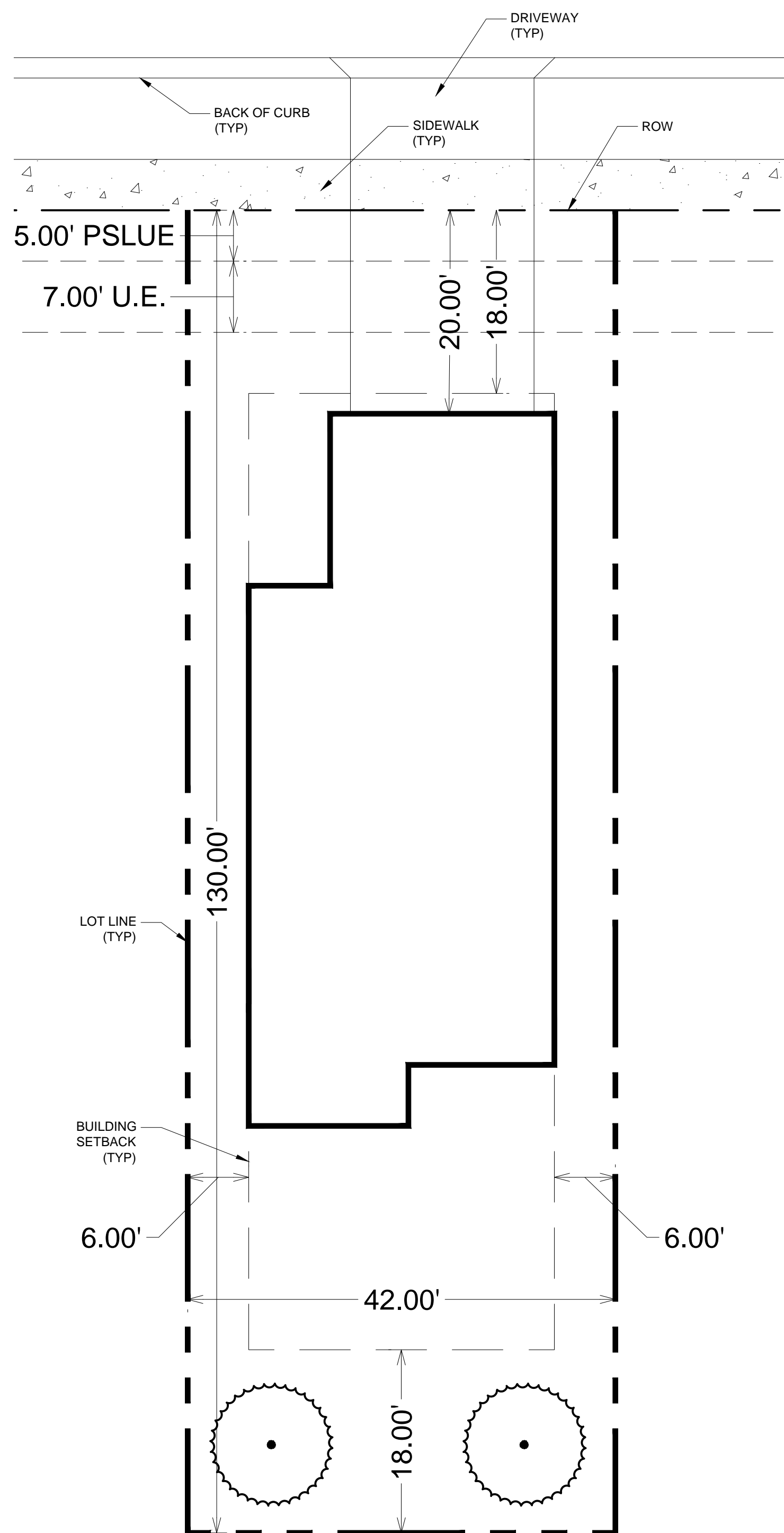


SCALE: 1" = n/a
 0' 0' 0'

REG. # 1018
 Thomas P. Lucido

Designer JJ Sheet
 Manager SG
 Project Number 17-640
 Municipal Number P21-137
 Computer File 17-640 Pulte at Tradition - Phase 2B - Code I

© Copyright Lucido & Associates. These documents and their contents are the property of Lucido & Associates. Any reproductions, revisions, modifications or use of these documents without the express written consent of Lucido & Associates is prohibited by law.



LANDSCAPE CALCULATIONS PER PUD - 42' LOT:

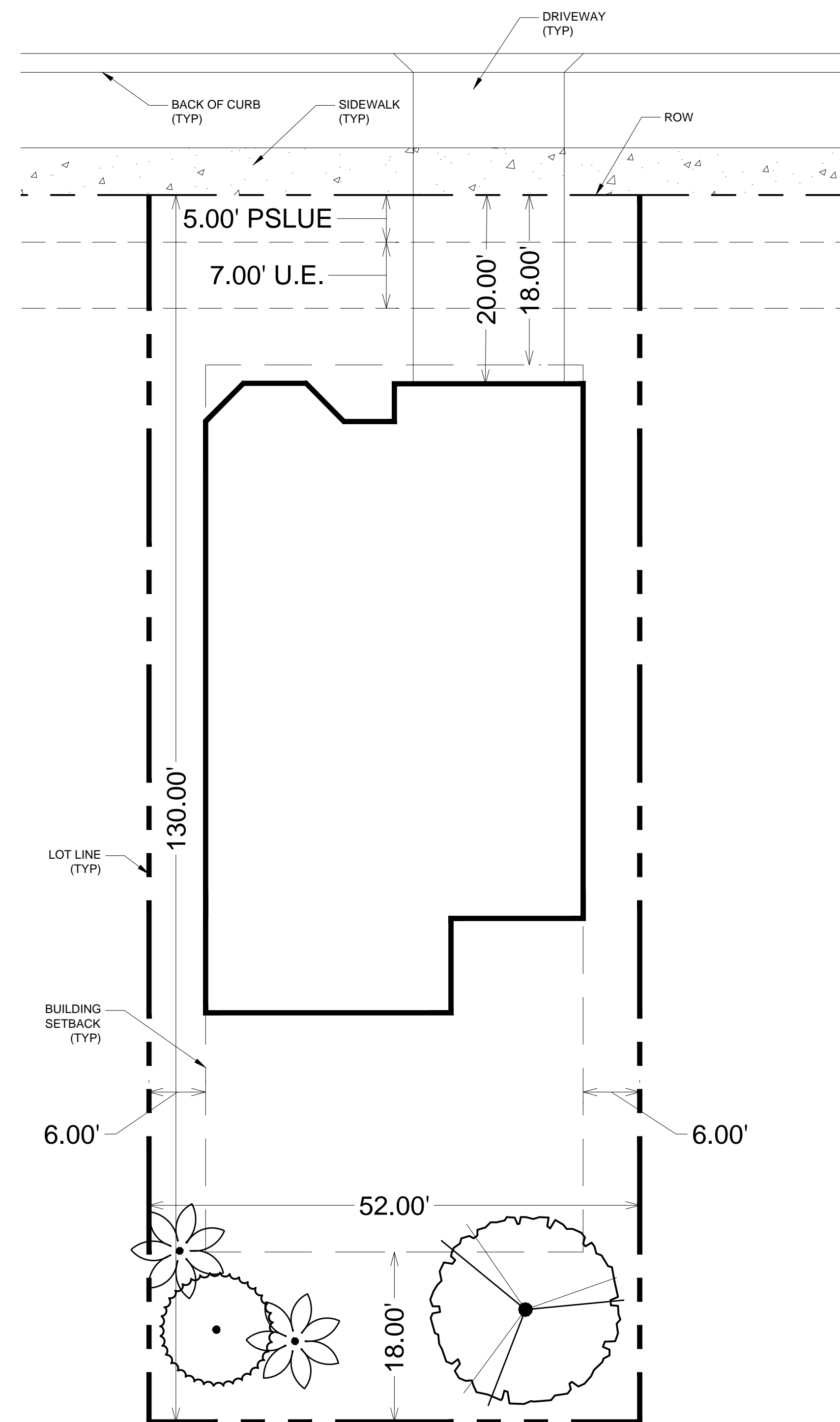
Single Family Dwelling Unit: Under 6,000 SF Lot Area
 Lots less than 6,000 sq. ft. shall provide two (2) trees.

Total Trees Required = 2
 Trees Provided = *2 Trees

***TREE SPECIES**

Refer to Appendix C - City of Port St. Lucie Suggested Tree List of Chapter 154 Standards of the Port St. Lucie Land Development Code for acceptable tree species. Tree examples include:

- Quercus virginiana (live oak)
- Ilex x attenuata 'Eagleston' ('Eagleston holly')
- Magnolia grandiflora 'Little Gem' ('Little Gem' magnolia)



LANDSCAPE CALCULATIONS PER PUD - 52' LOT:

Single Family Dwelling Unit: Lots From 6,000 to 7,500 sq. ft.
 Lots from 6,000 to 7,500 sq. ft. shall provide three (3) trees.

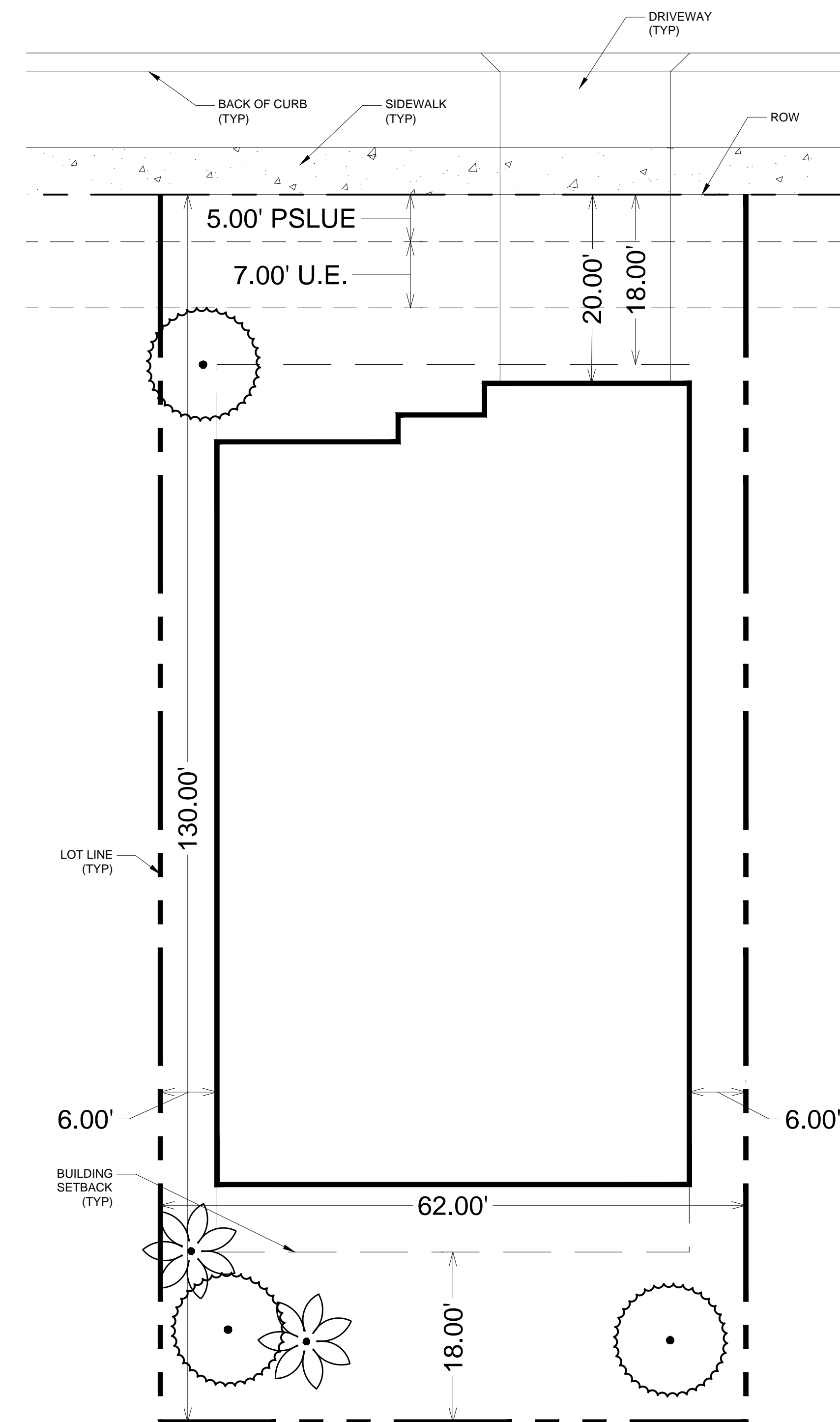
Total Trees Required = 3
 Trees Provided = *3 Trees (1 Palm Credit)

GENERAL LANDSCAPE NOTES - TYPICAL LOT LANDSCAPE PLAN:

1. 100% of all required trees on lots shall be of a native species.
2. All plant material to be Florida No. 1 or better.
3. All landscape & sod areas to be irrigated by an automated system that provides 100% coverage with 100% overlap with a minimum d.u. of .70.

PSLUSD NOTES FOR LANDSCAPE PLANS

1. All new landscaping within utility easements and within ten (10) feet of underground utility infrastructure shall comply with PSLUSD technical specifications, policies, and codes.
2. No landscaping other than sod grasses may be planted within a 5' radius maintenance area of any utility appurtenances such as water meters, backflow devices, fire hydrants, sanitary sewer cleanouts, and manholes, air release valves, etc. Trees shall not be planted within ten (10) feet of any underground infrastructure.
3. No landscaping shall be planted in such a manner as to adversely affect utility installation, operation and maintenance.

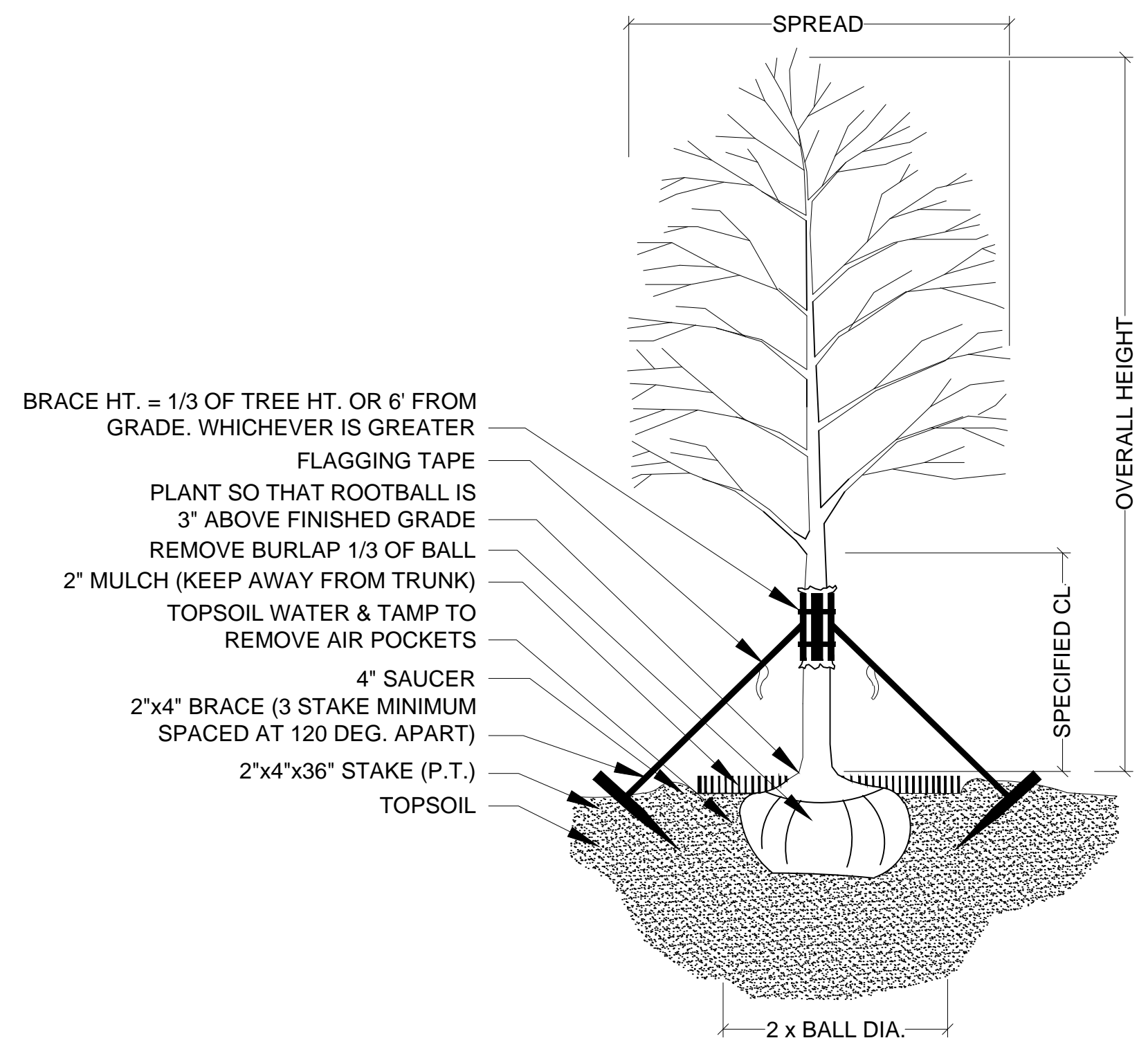


LANDSCAPE CALCULATIONS PER PUD - 62' LOT:

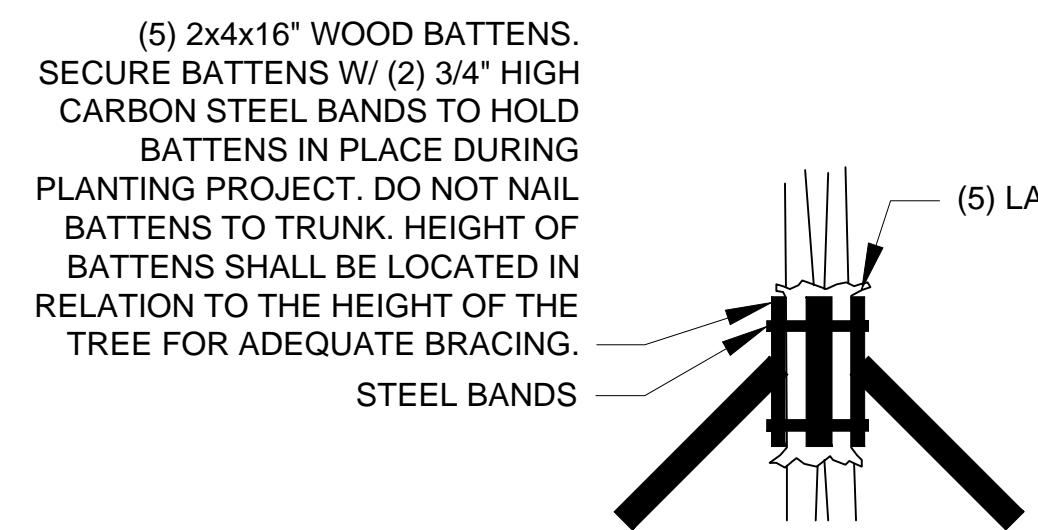
Single Family Dwelling Unit: Lots Over 7,500 sq. ft.
 Lots over 7,500 sq. ft. shall provide four (4) trees.

Total Trees Required = 4
 Trees Provided = *4 Trees (1 Palm Credit)

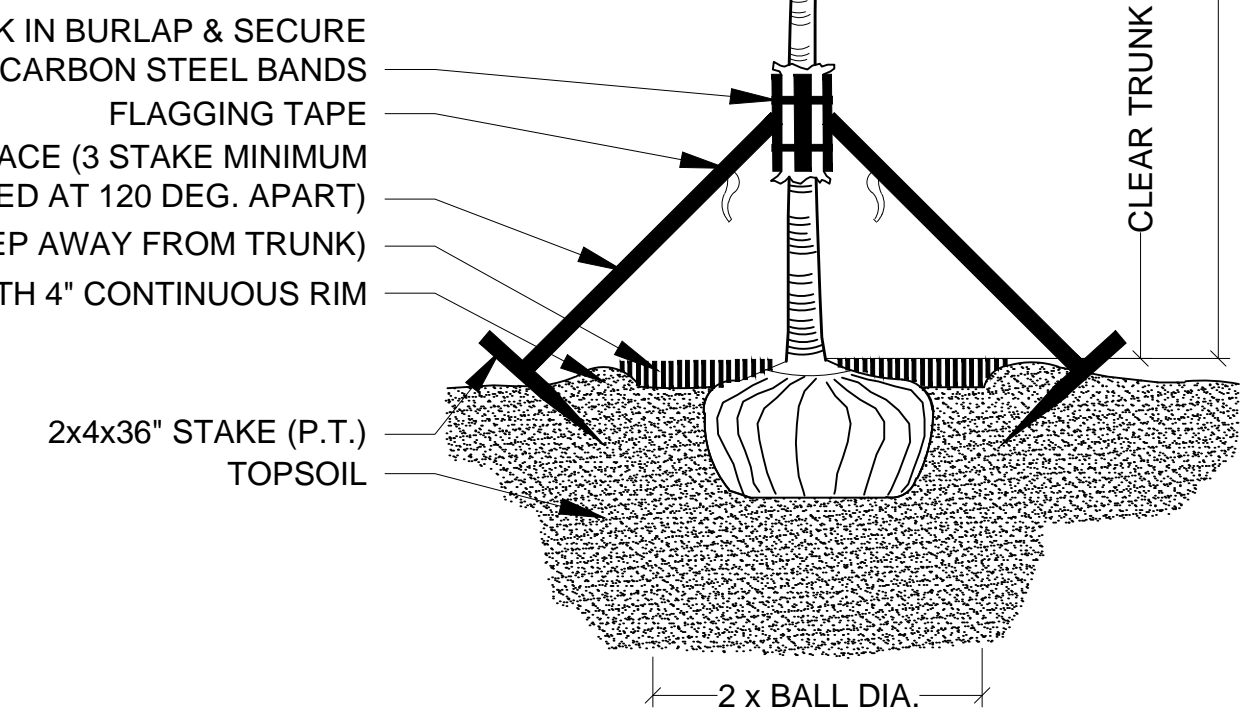
Drawing Name: J:\Projects Active\17-640 Pulte @ Tradition\Landscapes\ Dec 02, 2021 - 3:35pm 17-640 Pulte at Tradition - Phase 2B - Code Landscape.dwg



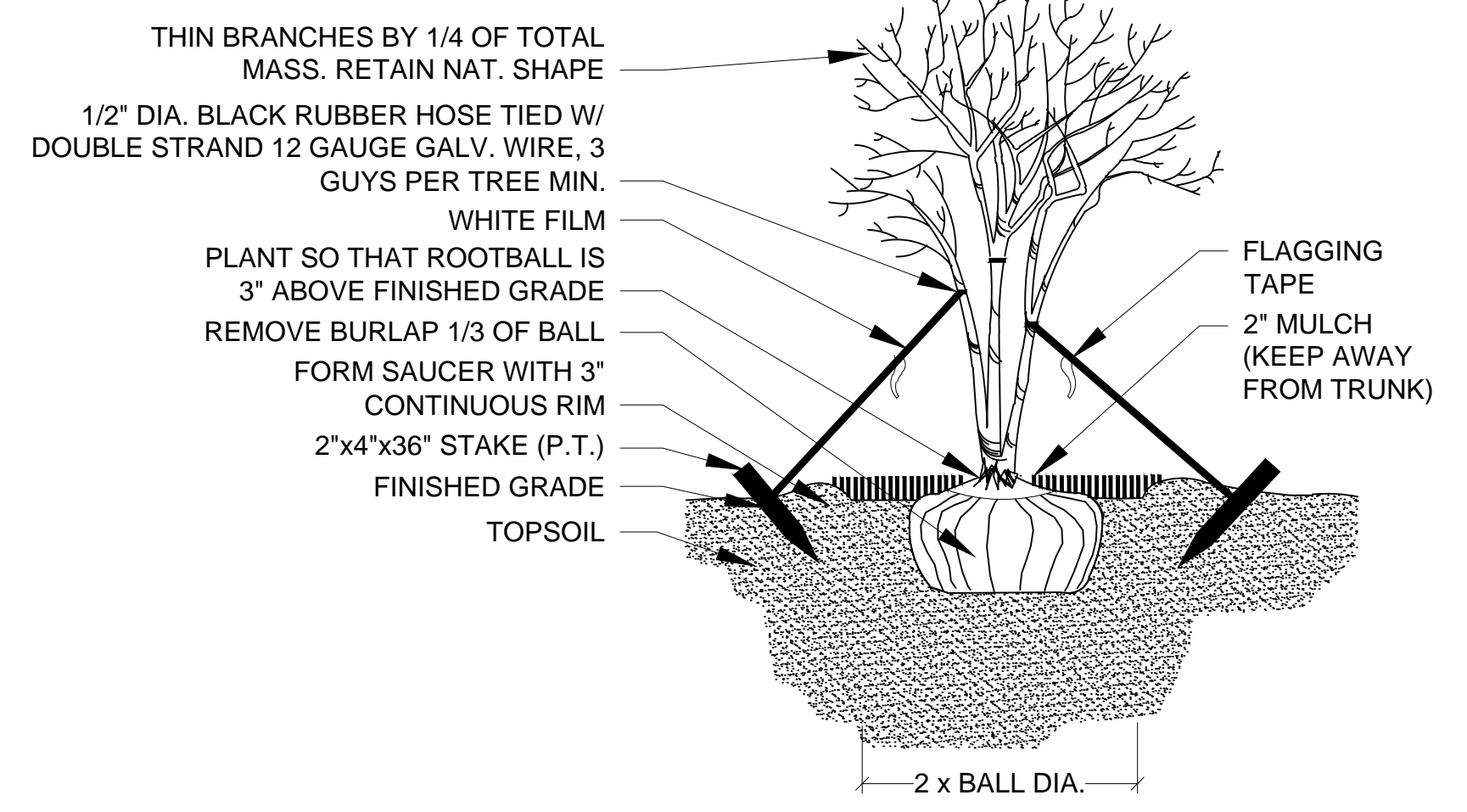
TREE PLANTING & STAKING
NOT TO SCALE



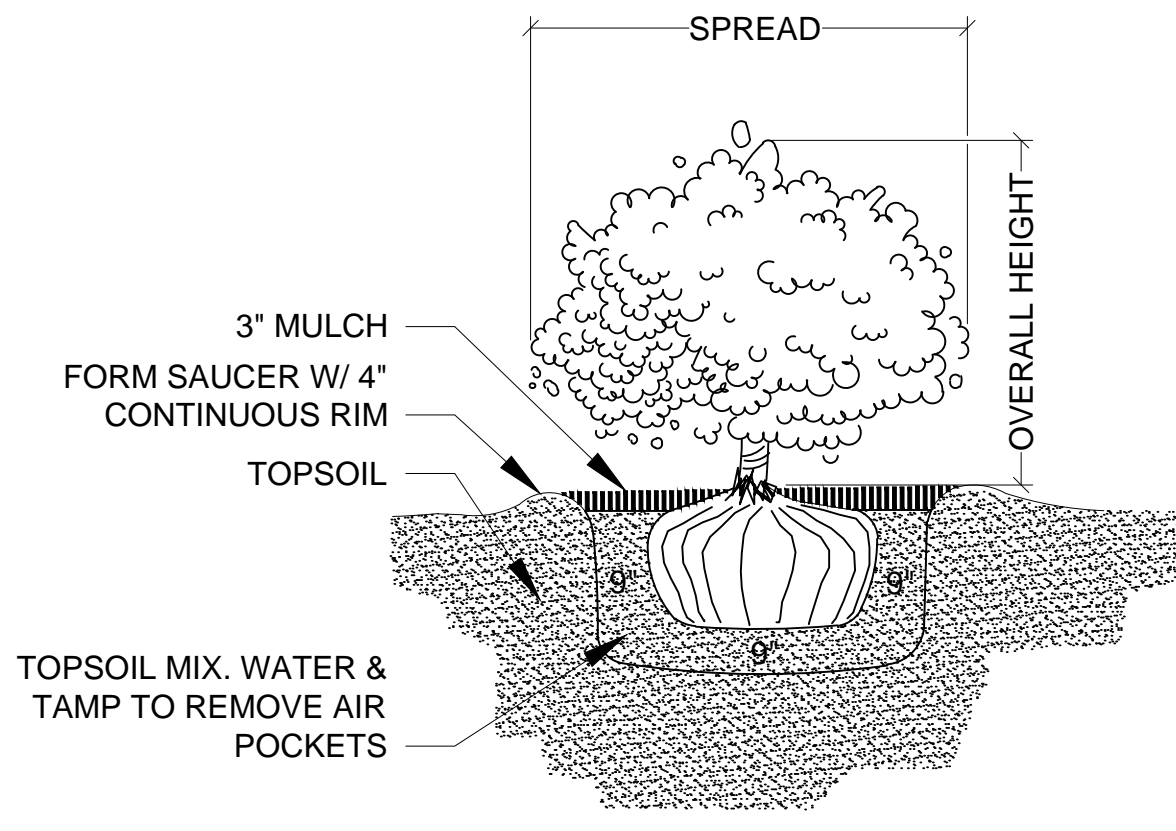
BRACING DETAIL
NOT TO SCALE



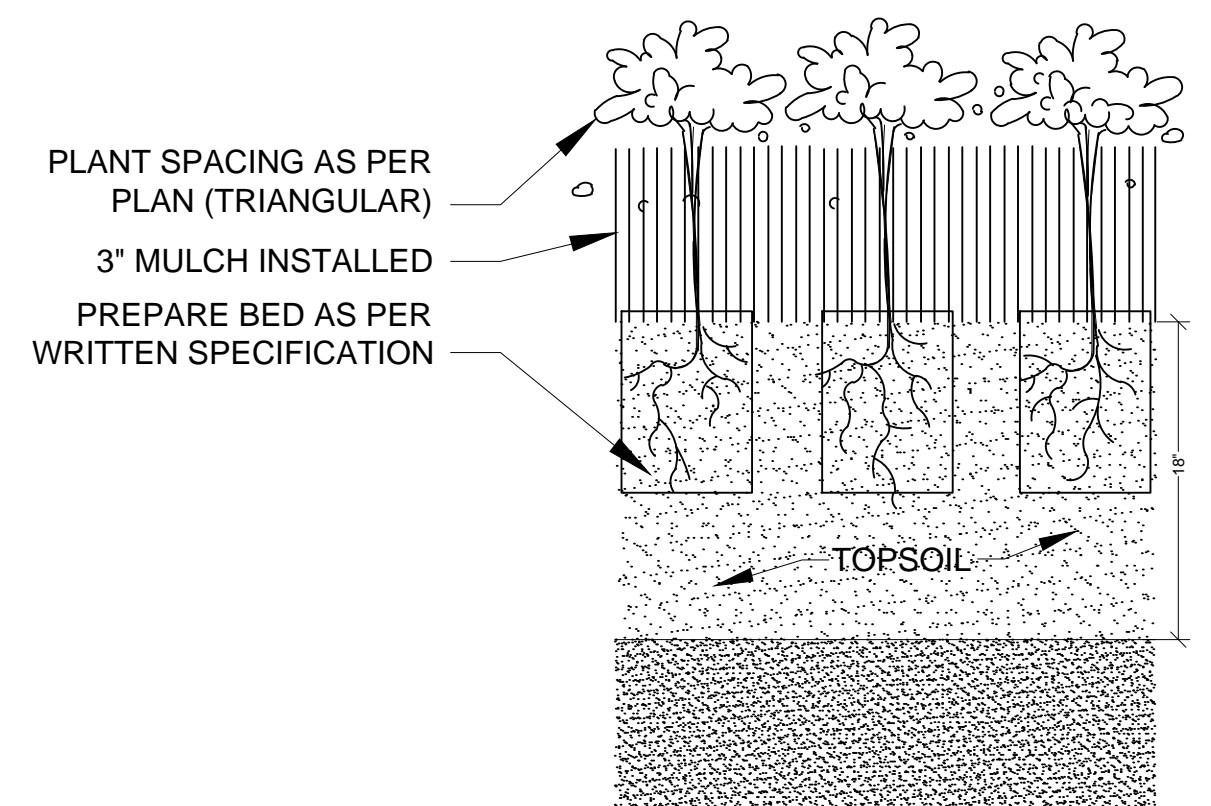
PALM PLANTING - ANGLE STAKE
NOT TO SCALE



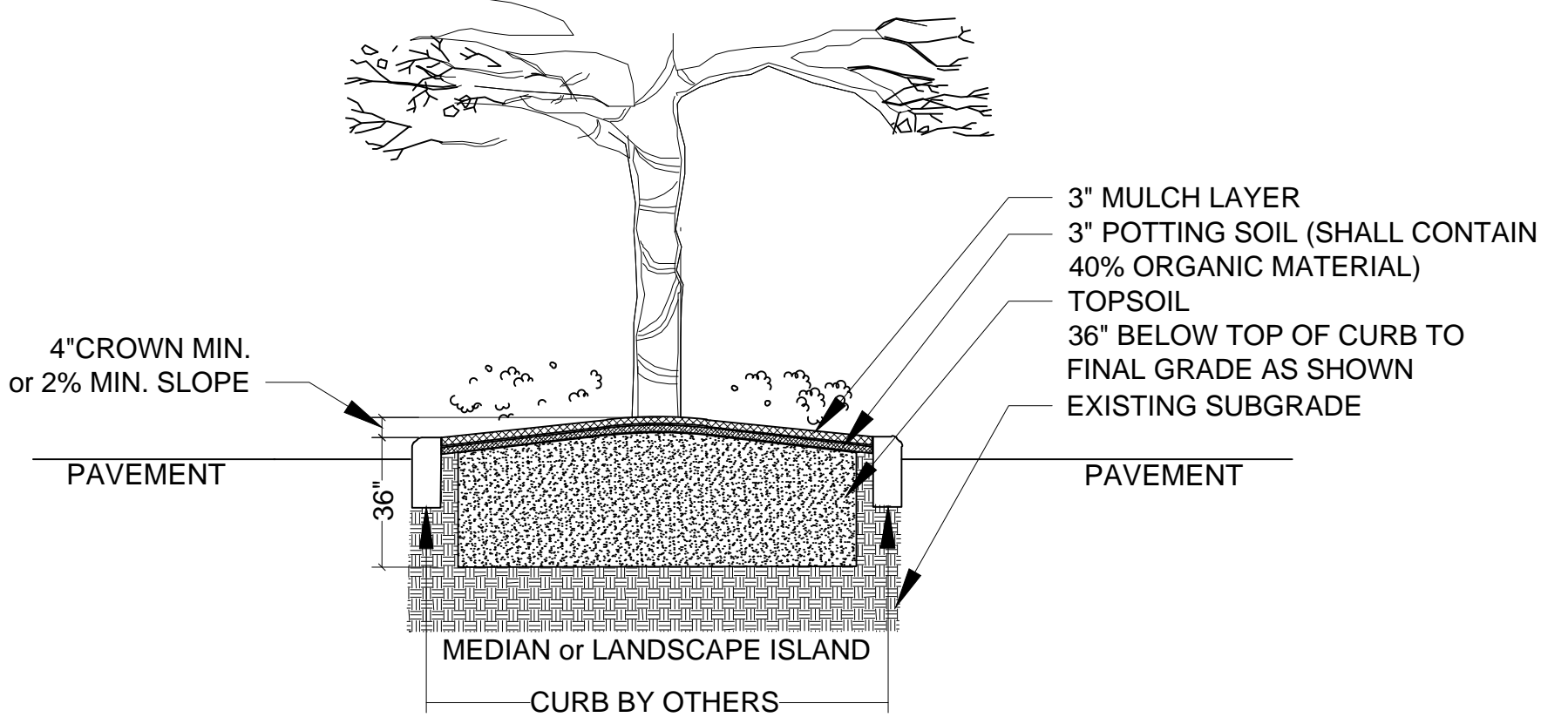
MULTI-TRUNK PLANTING & GUYING
NOT TO SCALE



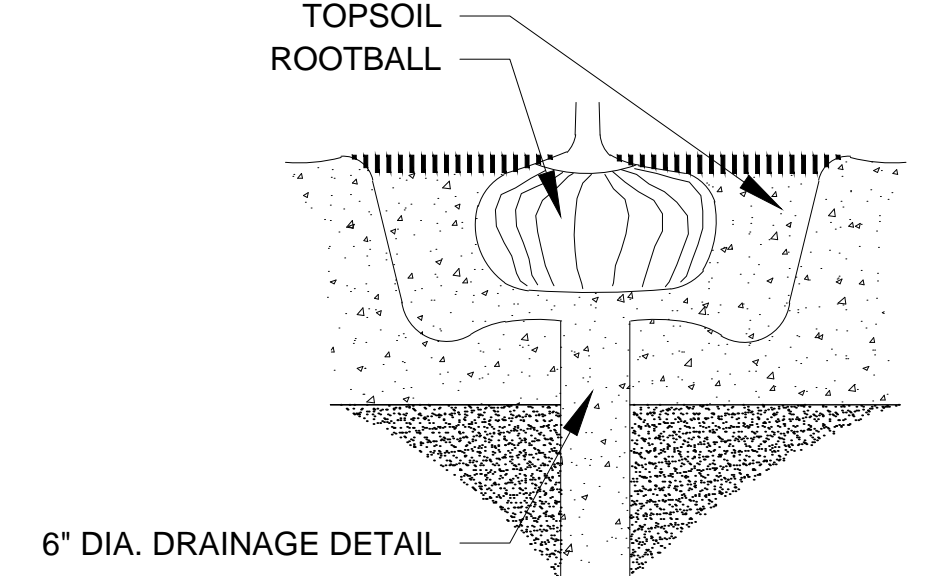
SHRUB PLANTING
NOT TO SCALE



GROUNDCOVER PLANTING DETAIL
NOT TO SCALE



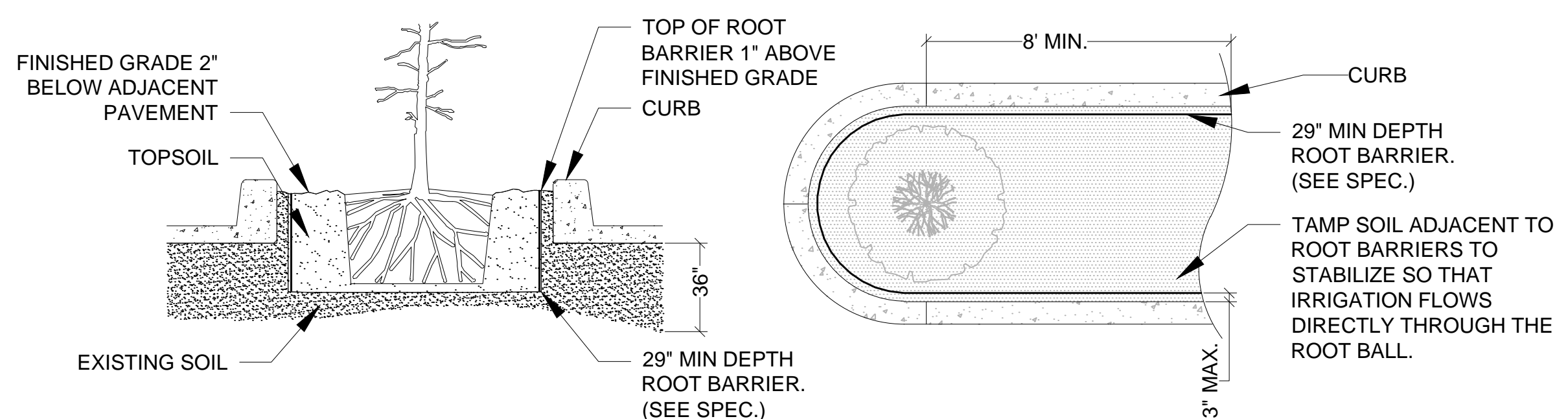
LANDSCAPE AREA PREPARATION DETAIL
NOT TO SCALE



DRAINAGE TESTING DETAIL
NOT TO SCALE

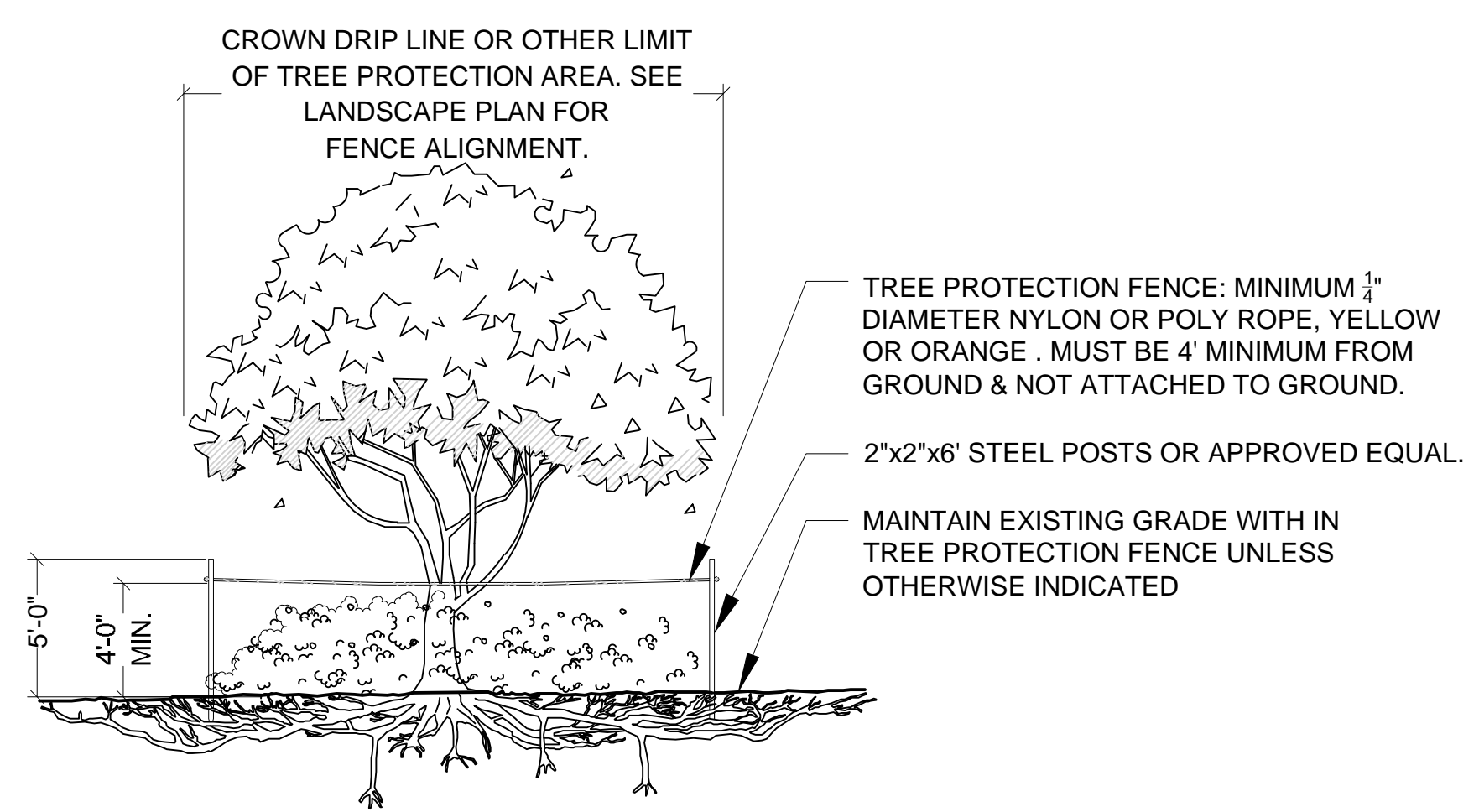
THIS DETAIL SHOWN DEPICTS A MEDIAN AND/OR LANDSCAPE ISLAND AND IS FOR GRAPHIC PURPOSES ONLY; SOIL PREPARATION SHALL APPLY TO ALL TREE, SHRUB, & GROUND COVER AREAS. THIS DOES NOT INCLUDE SOD AREAS

- *TOPSOIL SHALL BE NATURAL, FRIABLE, FINE LOAMY SOIL POSSESSING CHARACTERISTICS OF REPRESENTATIVE TOPSOIL IN THE VICINITY OF THE PROJECT SITE THAT PRODUCES HEAVY GROWTH.
- *TOPSOIL SHALL HAVE A PH RANGE OF 5.5-7.4, FREE FROM SUBSOIL, WEEDS, LITTER, SODS, CLAY, STONES, STUMPS, ROOTS, TRASH, HERBICIDES, TOXIC SUBSTANCES, OR ANY OTHER MATERIAL WHICH MAY BE HARMFUL TO PLANT GROWTH, OR HINDER PLANTING OPERATIONS.
- *TOPSOIL SHALL CONTAIN A MINIMUM OF 3% ORGANIC MATERIAL.
- *TOPSOIL MUST PERCOLATE WATER AT A RATE OF 1" PER HOUR (SEE ALSO DRAINAGE TESTING DETAIL FOR TREES)
- *LANDSCAPE AREA SOILS SHALL BE APPROVED BY LANDSCAPE ARCHITECT/OWNER PRIOR TO PLANTING



SPECIAL APPLICATIONS ROOT BARRIER DETAIL
NOT TO SCALE

NOTES:
 1- ROOT BARRIER SHALL BE INSTALLED WHEN ROOT BALL IS LOCATED WITHIN 8' OF PAVEMENT AND OR CURB.
 2- ROOT BARRIER SHALL BE "BIO-BARRIER 29" DEPTH OR APPROVED EQUAL.
 3- ROOT BARRIER SHALL BE INSTALLED PER MANUFACTURE'S SPECIFICATIONS AND RECOMMENDATIONS.



TREE PROTECTION BARRICADE
NOT TO SCALE

NOTES:
 1- SEE LANDSCAPE PLAN FOR FENCE ALIGNMENT.
 3- NO PRUNING SHALL BE PERFORMED EXCEPT BY APPROVED ARBORIST.
 4- NO EQUIPMENT SHALL OPERATE INSIDE THE PROTECTIVE FENCING INCLUDING DURING FENCE INSTALLATION AND REMOVAL.

DRAINAGE TESTING/DRAINAGE CHANNEL REQUIREMENTS.

PRIOR TO PLANTING, ALL PLANTING PITS SELECTED FOR TESTING SHALL BE TESTED IN THE FOLLOWING MANNER.

- DIG EACH PLANTING PIT TO THE MINIMUM SPECIFIED SIZE.
- FILL PLANTING PIT WITH TWELVE INCHES (12") OF WATER. IF THE WATER LEVEL DROPS FOUR (4") OR MORE WITHIN FOUR (4) HOURS, THE DRAINAGE IS SUFFICIENT AND A DRAINAGE CHANNEL IS NOT REQUIRED. IF THE WATER LEVEL DROPS LESS THAN FOUR INCHES (4") WITHIN THE FOUR (4) HOUR PERIOD, A DRAINAGE CHANNEL IS REQUIRED.
- WHERE REQUIRED, THE DRAINAGE CHANNEL MUST EXTEND DOWN THROUGH THE NON POROUS SOIL AND INTO POROUS SOIL. (SEE DETAIL)
- ALL MATERIAL REMOVED FROM THE DRAINAGE CHANNEL SHALL BE DISCARDED.
- WHEN BACKFILLING PLANTING PITS WITH NATIVE TOPSOIL, CARE MUST BE TAKEN TO KEEP THE CONSISTENCY OF THE SOIL MIX THE SAME THROUGHOUT THE PLANTING PIT AND DRAINAGE CHANNEL.

Key / Location:



Project Team:

Client & Property Owner: Mattamy Homes, LLC
 1500 Gateway Blvd, Suite 220
 Boynton Beach, FL 33426

Landscape Architect: Lucido & Associates
 701 E Ocean Boulevard
 Stuart, FL 34994

Engineer: Kimley Horn
 445 24th Street, Suite 200
 Vero Beach, FL 32960

Pulte at Tradition Phase 2B Landscape Plan

Port St. Lucie, Florida
 June 16, 2021

Landscape Details

City of Port St. Lucie P21-137
 PSLUD No. 5308D

Date	By	Description
10/08/21	SAW	Response to SPRC comments
12/03/21	MRY	Response to SPRC comments



REG. # 1018
 Thomas P. Lucido

Designer JJ Sheet
 Manager SG
 Project Number 17-640
 Municipal Number P21-137
 Computer File 17-640 Pulte at Tradition - Phase 2B - Code I

LA-8

Drawing Name: J:\Projects Active\17-640 Pulte @ Tradition\Landscape\ Dec 02, 2021 - 3:35pm 17-640 Pulte at Tradition - Phase 2B - Code Landscape.dwg

