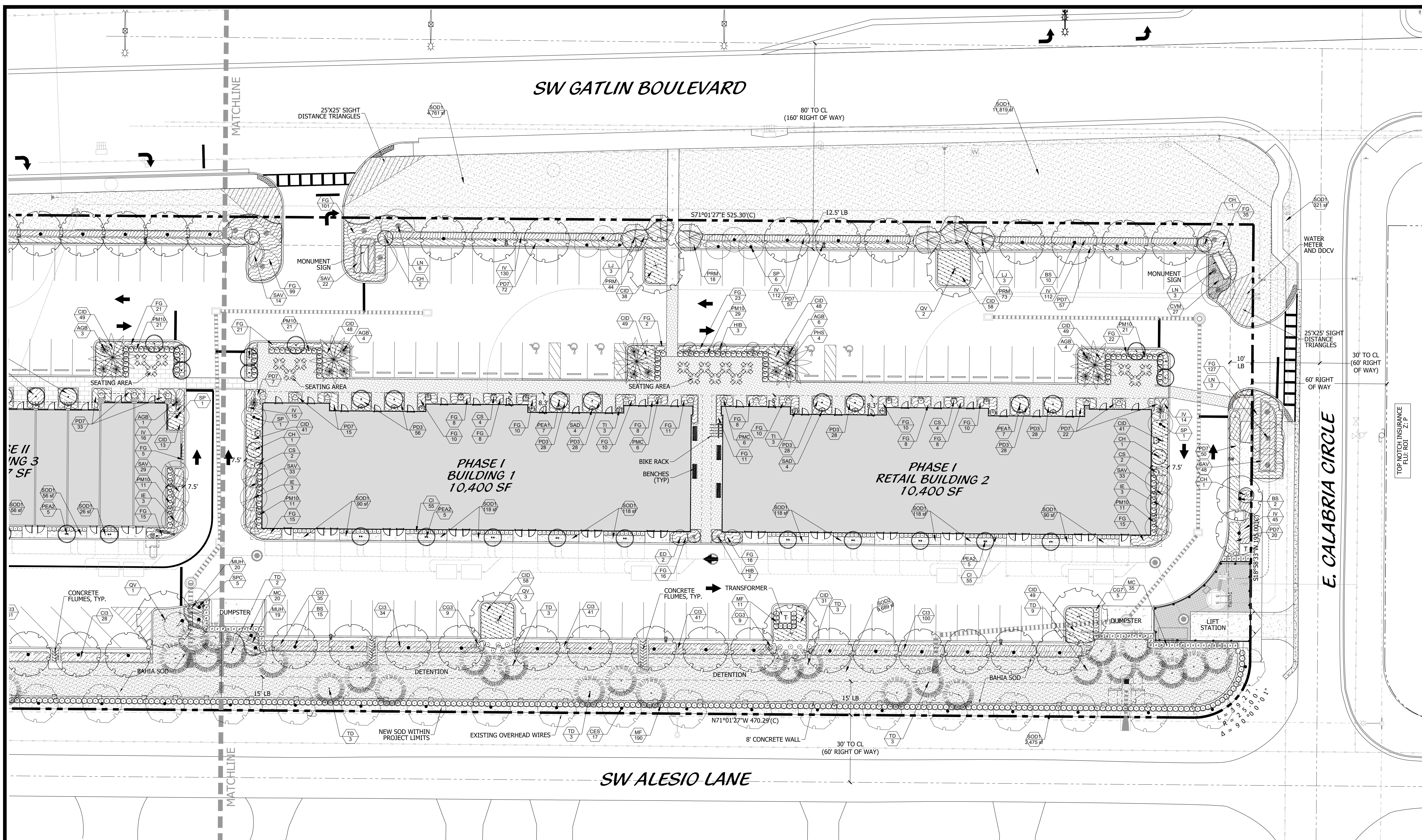


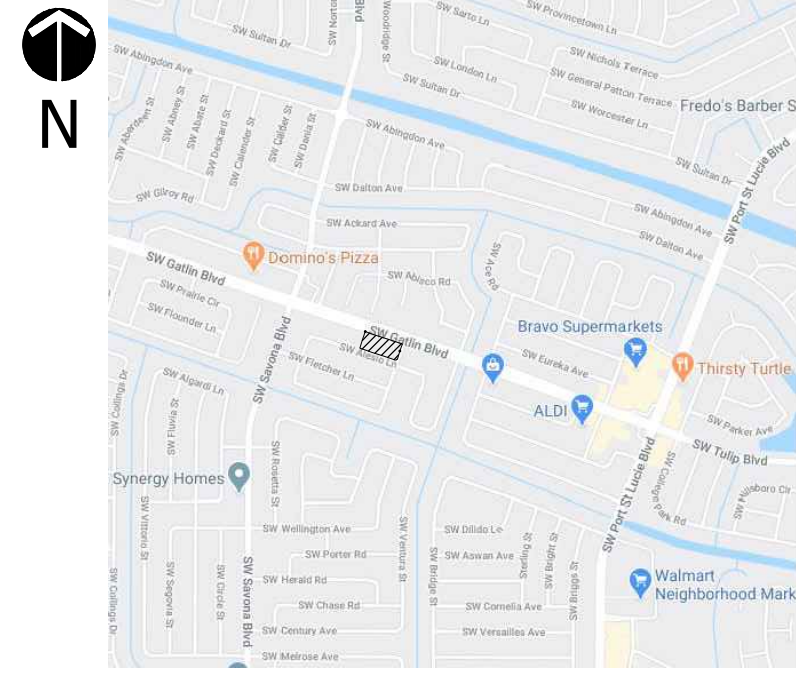
Cotleur & Hearing

Landscape Architects
Land Planners
Environmental Consultants
1934 Commerce Lane
Suite 1
Jupiter, Florida 33458
561.747.6336 · Fax 747.1377
www.cotleurhearing.com
Lic# LC-26000535

Gatlin Pointe Phase II Landscape Plan Port St. Lucie, Florida



LOCATION MAP



PHASE I LANDSCAPE DATA

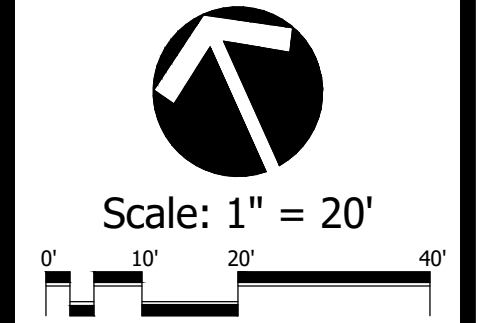
TOTAL SITE AREA	111,680.67 SF		
	2.56 AC		
LANDSCAPE BUFFER REQUIREMENTS			
NORTH (REQ. 10' WIDE, 1 TREE PER 30', CONT. HEDGE 2' O.C.)	525.30	18	19
EAST (REQ. 10' WIDE, 1 TREE PER 30', CONT. HEDGE 2' O.C.)	221.80	7	7
* 2 MDSTORY TREES = 1 1/2 TREE			
SOUTH (REQ. 10' WIDE, 1 TREE PER 30', CONT. HEDGE 2' O.C.)	495.30	17	17
* 2 MDSTORY TREES = 1 1/2 TREE			
WEST (REQ. 10' WIDE, 1 TREE PER 30', CONT. HEDGE 2' O.C.)	220.00	7	13
VEHICULAR USE LANDSCAPE AREA REQ.			
(1) TREE PER LANDSCAPE ISLAND		REQUIRED	PROVIDED
		18	
FOUNDATION PLANTING			
RETAIL 1 TOTAL PERIMETER (REQ. 5' WIDE, 1 TREE PER 30', HEDGE 2' O.C.)	493.98	16	19
RETAIL 2 TOTAL PERIMETER (REQ. 5' WIDE, 1 TREE PER 30', HEDGE 2' O.C.)	493.98	16	19

PHASE I MITIGATION TABLE

TREE MITIGATION DATA	
TOTAL INCHES (DBH) PINES ON SITE	1,671
TOTAL INCHES (DBH) OAKS ON SITE	145
TOTAL DBH INCHES	1,816
TOTAL INCHES TO BE REMOVED	1,816
TOTAL INCHES TO BE MITIGATED ON SITE*	43.5
*TOTAL ON SITE MITIGATION: 29 TREES 3" - 8" (1/2 CREDIT BY CODE) = 43.5"	
TOTAL INCHES REMAINING TO BE MITIGATED OFF SITE**	1,772.5
**OFF SITE MITIGATION TO INCLUDE PLANTING AND/OR CONTRIBUTION INTO THE CITY TREE PRESERVATION FUND.	

NOTES

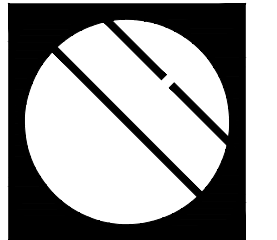
- NO LANDSCAPING SHALL BE PLANTED IN A MANNER THAT WOULD ADVERSELY AFFECT UTILITY EASEMENTS. LANDSCAPING SHALL BE IN COMPLIANCE WITH CHAPTER 153 OF THE CITY OF PORT ST. LUCIE CODE OF ORDINANCES, PLSUSD TECHNICAL SPECIFICATIONS AND POLICIES.
- ALL LANDSCAPING WITHIN CITY UTILITY EASEMENTS SHALL COMPLY WITH PLSUSD TECHNICAL SPECIFICATIONS, POLICIES, AND CODES.
- ALL LANDSCAPING SHALL MEET THE LATEST PLSUSD LANDSCAPE POLICY AND SHALL NOT BE PLACED IN A MANNER THAT WOULD CREATE CONFLICTS WITH THE INTENDED OPERATION AND MAINTENANCE OF ANY EXISTING UTILITY.
- TREES SHALL NOT BE PLANTED WITHIN TEN (10) FEET OF ANY PLSUSD INFRASTRUCTURE.
- NO LANDSCAPING OTHER THAN SOD GRASSES SHALL BE LOCATED WITHIN 5' OF A PLSUSD APPURTENANCE SUCH AS A WATER METER ASSEMBLY, BACKFLOW DEVICE, FIRE HYDRANT OR SEWER CLEANOUT, ETC.
- EXISTING LANDSCAPE IN THE RIGHT-OF-WAY TO BE REMOVED OR RELOCATED AS DIRECTED BY PORT ST. LUCIE ENVIRONMENTAL DIVISION. CONTRACTOR TO COORDINATE WITH PORT ST. LUCIE ENVIRONMENTAL. ALL EXPOSED AREAS WITHIN THE LIMITS OF CLEARING AND GRUBBING WHICH DO NOT INCLUDE RELOCATED LANDSCAPE SHALL HAVE SOD INSTALLED (SOD OF SAME VARIETY AS CURRENTLY PRESENT WITHIN THE RIGHT OF WAY).



DESIGNED	DEH
DRAWN	RO
APPROVED	DEH
JOB NUMBER	20-0704
DATE	10-04-21
REVISIONS	01-25-21
	02-22-21
	03-15-21
	05-25-21
	08-13-21
	11-30-21
	08-30-23

August 30, 2023 11:18:53 a.m.
Drawing: 20-0704 LP.DWG
SHEET 1 OF 3
© COTLEUR & HEARING, INC.
These drawings are the property of the architect and are not to be used for extensions or on other projects except by agreement in writing with the architect. Immediately report any discrepancies to the architect.

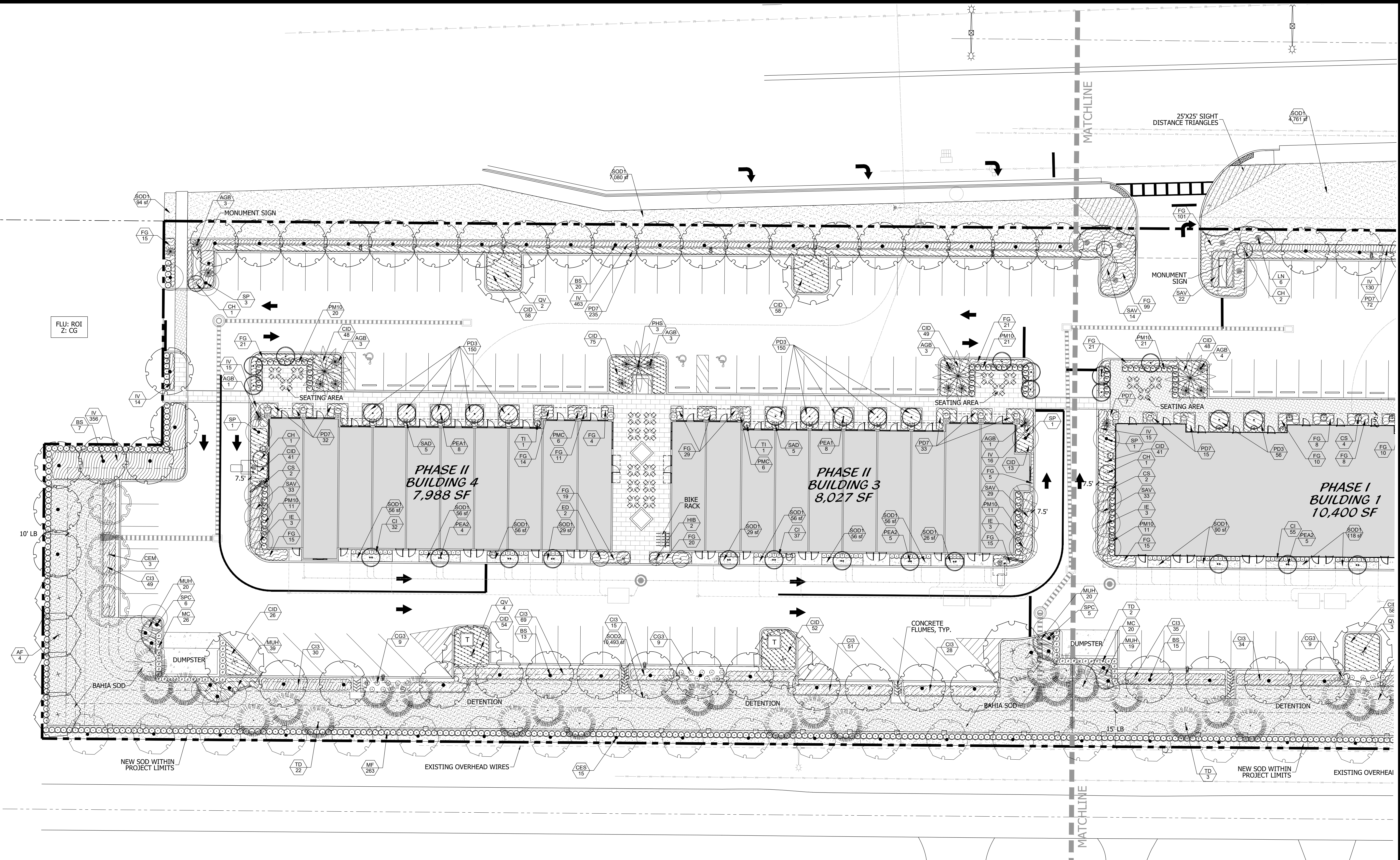
CITY OF PSL PROJECT #P20-239-A4
PLSUSD PROJECT NO. 5381A



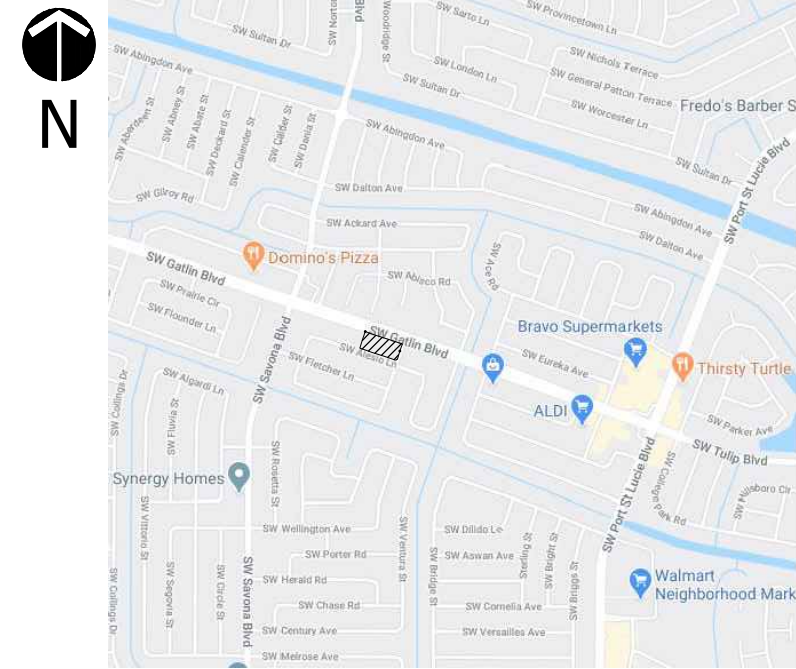
Cotleur & Hearing

Landscape Architects
Land Planners
Environmental Consultants
1934 Commerce Lane
Suite 1
Jupiter, Florida 33458
561.747.6336 · Fax 747.1377
www.cotleurhearing.com
Lic# LC-26000535

Gatlin Pointe Phase II Landscape Plan Port St. Lucie, Florida



LOCATION MAP



PHASE II LANDSCAPE DATA

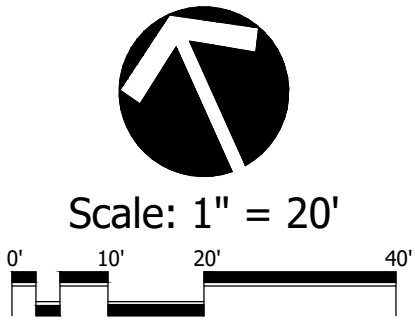
TOTAL SITE AREA	192,124.70 SF 4.41 AC
LANDSCAPE BUFFER REQUIREMENTS	
NORTH (REQ. 10' WIDE, 1 TREE PER 30', CONT. HEDGE 2' O.C.)	845.47
EAST (REQ. 10' WIDE, 1 TREE PER 30', CONT. HEDGE 2' O.C.)	221.80
* 2 MASTERY TREES = 1 1/2 TREE	
SOUTH (REQ. 10' WIDE, 1 TREE PER 30', CONT. HEDGE 2' O.C.)	870.50
* 2 MASTERY TREES = 1 1/2 TREE	
WEST (REQ. 10' WIDE, 1 TREE PER 30', CONT. HEDGE 2' O.C.)	220.00
VEHICULAR USE LANDSCAPE AREA REQ.	
(1) TREE PER LANDSCAPE ISLAND	REQUIRED PROVIDED
	25 25
FOUNDATION PLANTING	
RETAIL 1 TOTAL PERIMETER (REQ. 5' WIDE, 1 TREE PER 30', HEDGE 2' O.C.)	493.98
RETAIL 2 TOTAL PERIMETER (REQ. 5' WIDE, 1 TREE PER 30', HEDGE 2' O.C.)	493.98
RETAIL 3 TOTAL PERIMETER (REQ. 5' WIDE, 1 TREE PER 30', HEDGE 2' O.C.)	424.686
RETAIL 4 TOTAL PERIMETER (REQ. 5' WIDE, 1 TREE PER 30', HEDGE 2' O.C.)	420.6037

PHASE II MITIGATION TABLE

TREE MITIGATION DATA	
TOTAL INCHES (DBH) PINES ON SITE	1,671
TOTAL INCHES (DBH) OAKS ON SITE	145
TOTAL DBH INCHES	1,816
TOTAL INCHES TO BE REMOVED	1,816
TOTAL INCHES TO BE MITIGATED ON SITE*	43.5
*TOTAL ON SITE MITIGATION: 29 TREES 3" = 87" (1/2 CREDIT BY CODE) = 43.5"	
TOTAL INCHES REMAINING TO BE MITIGATED OFF SITE**	1,772.5
**OFF SITE MITIGATION TO INCLUDE PLANTING AND/OR CONTRIBUTION INTO THE CITY TREE PRESERVATION FUND.	

NOTES

- NO LANDSCAPING SHALL BE PLANTED IN A MANNER THAT WOULD ADVERSELY AFFECT UTILITY EASEMENTS. LANDSCAPING SHALL BE IN COMPLIANCE WITH CHAPTER 153 OF THE CITY OF PORT ST. LUCIE CODE OF ORDINANCES, PSLUSD TECHNICAL SPECIFICATIONS AND POLICIES.
- ALL LANDSCAPING WITHIN CITY UTILITY EASEMENTS SHALL COMPLY WITH PSLUSD TECHNICAL SPECIFICATIONS, POLICIES, AND CODES.
- ALL LANDSCAPING SHALL MEET THE LATEST PSLUSD LANDSCAPE POLICY AND SHALL NOT BE PLACED IN A MANNER THAT WOULD CREATE CONFLICTS WITH THE INTENDED OPERATION AND MAINTENANCE OF ANY EXISTING UTILITY.
- TREES SHALL NOT BE PLANTED WITHIN TEN (10) FEET OF ANY PSLUSD INFRASTRUCTURE.
- NO LANDSCAPING OTHER THAN SOD GRASSES SHALL BE LOCATED WITHIN 5' OF A PSLUSD APPURTENANCE SUCH AS A WATER METER ASSEMBLY, BACKFLOW DEVICE, FIRE HYDRANT OR SEWER CLEANOUT, ETC.
- EXISTING LANDSCAPE IN THE RIGHT-OF-WAY TO BE REMOVED OR RELOCATED AS DIRECTED BY PORT ST. LUCIE ENVIRONMENTAL DIVISION. CONTRACTOR TO COORDINATE WITH PORT ST. LUCIE ENVIRONMENTAL. ALL EXPOSED AREAS WITHIN THE LIMITS OF CLEARING AND GRUBBING WHICH DO NOT INCLUDE RELOCATED LANDSCAPE SHALL HAVE SOD INSTALLED (SOD OF SAME VARIETY AS CURRENTLY PRESENT WITHIN THE RIGHT OF WAY).



DESIGNED	DEH
DRAWN	RO
APPROVED	DEH
JOB NUMBER	20-0704
DATE	10-04-21
REVISIONS	01-25-21
	02-22-21
	03-15-21
	05-19-22
	08-25-22
	08-13-21
	11-28-22
	08-13-21
	07-10-23
	11-30-21
	08-30-23
	08-01-23

August 30, 2023 11:18:53 a.m.
Drawing: 20-0704 LP.DWG
SHEET 2 OF 3
© COTLEUR & HEARING, INC.
These drawings are the property of the architect and are not to be used for extensions or on other projects except by agreement in writing with the architect. Immediately report any discrepancies to the architect.

CITY OF PSL PROJECT #P20-239-A4
PSLUSD PROJECT NO. 5381A

LANDSCAPE NOTES

ALL PLANT MATERIAL SHALL BE FLORIDA NUMBER 1 OR BETTER AS DEFINED BY THE DIVISION OF PLANT INDUSTRY 'FLORIDA GRADES AND STANDARDS' LATEST EDITION.

ALL LANDSCAPE SHALL CONFORM TO THE REQUIREMENTS OF THE CITY OF PORT SAINT LUCIE LAND DEVELOPMENT REGULATIONS. THE CITY OF PORT SAINT LUCIE LANDSCAPE CODE (LDLRS) SHALL GOVERN IN THE EVENT OF A CONFLICT.

VEGETATION REMOVAL PERMITS ARE REQUIRED PRIOR TO REMOVING, CLEARING OR STRIPPING ANY VEGETATION FROM THE PROPERTY.

AT THE TIME OF BUILDING PERMIT, THE APPLICANT SHALL EXECUTE HOLD HARMLESS AGREEMENTS WITH ALL APPLICABLE UTILITIES FOR LANDSCAPING WITHIN UTILITY EASEMENTS.

THE LANDSCAPE CONTRACTOR SHALL NOT MAKE ANY SUBSTITUTIONS AND/OR CHANGES WITHOUT THE AUTHORIZATION OF CITY OF PORT SAINT LUCIE, THE OWNER, AND THE LANDSCAPE ARCHITECT.

THE LANDSCAPE CONTRACTOR SHALL REVIEW THE PROJECT DRAINAGE AND UTILITY PLANS PRIOR TO CONSTRUCTION AND AVOID ANY CONFLICTS. THE LANDSCAPE CONTRACTOR SHALL VERIFY THE LOCATION OF ALL UNDERGROUND UTILITIES PRIOR TO COMMENCING WORK.

THE LANDSCAPE CONTRACTOR SHALL BE RESPONSIBLE FOR ALL PERMITS.

THE CONTRACTOR SHALL COORDINATE THE PLANTING AND TRIMMING OF STREET TREES TO ENSURE FULL VISIBILITY TO TRAFFIC CONTROL AND SAFETY SIGNAGE.

TREES SHALL BE POSITIONED TO AVOID CONFLICTS WITH SIGNAGE AND SITE LIGHTING. LARGER TREES WILL BE PROVIDED AT INTERSECTIONS WHERE DEEMED NECESSARY.

ALL VEGETATION SHALL BE SELECTED AND POSITIONED SO THAT IT DOES NOT PRESENT OBSTRUCTIONS TO THE LINE OF SIGHT AT INTERSECTIONS PURSUANT TO SECTION 22-126(4)(9)(C) OF THE CITY OF PORT SAINT LUCIE CODE.

ALL ABOVE GROUND UTILITIES I.E. TRANSFORMERS, SWITCH BOXES, AC CONDENSERS AND ALIKE SHALL BE FULLY SCREENED FROM VIEW ON THREE SIDES WITH LANDSCAPING. THE LANDSCAPING SHALL TO THE FALLEST POINT OF SAID EQUIPMENT AT TIME OF PLANTING.

ALL TREES SHALL BE LOCATED WITHIN A MULCH PLANTING BED WITH A MINIMUM OF TWO (2) FEET OF CLEARANCE TO THE EDGE OF THE BED.

SOD AND IRRIGATION SHALL BE INSTALLED IN ANY ADJACENT GRID OF WAY BETWEEN THE SIDEWALK AND THE CURB.

ALL SOD SHALL BE STENOTAPHURUM SECUNDATUS FLORIDA-PALMETTO TO (ST. AUGUSTINE SOD).

TREES WITHIN PLANTING ISLANDS LESS THAN FIVE (5) FEET IN WIDTH SHALL BE LOCATED TO AVOID CONFLICTS WITH THE OVERHANG OF VEHICLES.

TREES 2' RAISED CONCRETE CURBING SHALL BE PROVIDED AROUND ALL PLANTING ISLANDS WITHIN VEHICULAR USE AREAS.

TREES AT ENTRANCE WAYS AND WITHIN SIGHT TRIANGLES SHALL BE TRIMMED IN SUCH A FASHION TO MINIMIZE SITE VISIBILITY CONFLICTS. CLEAR VISIBILITY SHALL BE MAINTAINED BETWEEN 30 INCHES AND 7 FEET. TEN FOOT BY THIRTY FOOT SIGHT VISIBILITY TRIANGLES SHALL BE PROVIDED AT ALL INTERSECTIONS WITH THE PUBLIC RIGHT OF WAY. IN ADDITION ALL LANDSCAPING SHALL CONFORM TO THE REQUIREMENTS OF FOOT INDEX 548.

EARTH BERMS SHALL NOT EXCEED A 3:1 SLOPE 4:1 SLOPES OR GREATER ARE PREFERABLE.

ALL TREES PLANTED UNDER OR ADJACENT TO PFL POWER LINES WILL COMPLY WITH THE PFL RIGHT TREE IN THE RIGHT PLACE GUIDELINES (REV 5/95)

PERIMETER TREES AT THE TIME OF PLANTING SHALL BE SPACED IN A WAY THAT COMPLMENTS THE SPACING OF ANY EXISTING TREES ON ADJACENT DEVELOPED AREAS.

ALL LANDSCAPE ISLANDS AND BEDS SHALL BE FREE FROM SHELL ROCK AND CONSTRUCTION DEBRIS. EXCAVATED TO A DEPTH OF 30 INCHES OR TO CLEAN NATIVE SOILS AND FILLED WITH THE SPECIFIED BACKFILL MIXTURE.

ALL LANDSCAPE ISLANDS SHALL INCORPORATE THE INSTALLATION OF MOUNDING OF NATIVE SOILS A MINIMUM OF SIX INCHES (6") ABOVE THE TOP OF CURB.

19.5" 'BIO BARRIER' ROOT BARRIER SHALL BE PROVIDED FOR SHADE TREES PLANTED WITHIN SIX (6) FEET OF PUBLIC CURBS, SIDEWALKS OR PUBLIC RIGHT OF WAYS. ALL ROOT BARRIER SHALL BE INSTALLED IN ACCORDANCE WITH THE MANUFACTURERS RECOMMENDATIONS. THE TOTAL LENGTH OF THE ROOT BARRIERS SHALL BE 20' ADJACENT TO THE SIDEWALK AND 20' ADJACENT TO THE CURB.

ALL AREAS SHALL BE FULLY IRRIGATED IN ACCORDANCE WITH THE REQUIREMENTS OF THE CITY OF PORT SAINT LUCIE. THE IRRIGATION WATER SOURCE SHALL BE WELL WATER FOR COMMON AREAS AND POTABLE WATER AROUND THE BUILDING FOUNDATION.

CATCH BASINS AND DRAINAGE SHALL NOT BE LOCATED WITH IN REQUIRED PERIMETER BUFFERS OR PRESERVE AREAS.

THE IRRIGATION SYSTEM SHALL BE DESIGNED TO PROVIDE 100% OVERLAP COVERAGE TO ALL LANDSCAPE AND SOD AREAS.

THE IRRIGATION SYSTEM SHALL BE EQUIPPED WITH A RAIN SENSOR/CUT OFF SWITCH IN ACCORDANCE WITH STATE AND LOCAL REQUIREMENTS.

EXISTING TREES AND VEGETATION TO REMAIN SHALL BE STAKED AND BARRICADED PRIOR TO ANY LAND CLEARING. TREES TO BE RELOCATED SHALL BE ROOT PRUNED AND PROTECTED DURING CONSTRUCTION.

ALL TREES PROPOSED TO BE PRESERVED ON SITE SHALL BE PROTECTED IN ACCORDANCE WITH THE PROCEDURES OUTLINED IN DIVISION IV. VEGETATION REMOVAL REQUIREMENTS IN THE CITY OF PORT SAINT LUCIE CODE PRIOR TO THE ISSUANCE OF A C.O.

ANY AREA DESIGNATED WITH EXISTING VEGETATION TO REMAIN THAT IS DISTURBED DURING CONSTRUCTION WILL BE RESTORED WITH NATIVE PLANTINGS.

EXISTING TREES PRESERVED OR RELOCATED ON SITE SHALL BE PRUNED ACCORDING TO ANSI A300 STANDARDS OR BY AN ISA CERTIFIED ARBORIST.

ALL EXISTING LANDSCAPING AND TREES TO REMAIN SHALL BE BARRICADED WITH ORANGE CONSTRUCTION BARRICADE. THE BARRICADE SHALL BE INSTALLED AT THE DRIP LINE OF THE TREE/PALM OR AT THE EDGE OF THE SHRUB MASS. BARRICADES SHALL REMAIN IN PLACE THROUGHOUT THE DURATION OF CONSTRUCTION.

EXISTING SUITABLE NATIVE VEGETATION LOCATED WITHIN THE PROPOSED DEVELOPMENT AREAS SHALL BE RELOCATED TO SUPPLEMENT THE LANDSCAPING. NATIVE VEGETATION SHALL BE RELOCATED OR CROWNED PRIOR TO THE CLEARING OF THE SITE THE APPLICANT SHALL IDENTIFY ALL NATIVE VEGETATION TO BE RELOCATED.

RELOCATION METHODOLOGY: EXISTING NATIVE VEGETATION DETERMINED TO BE SUITABLE FOR RELOCATION SHALL BE RELOCATED TO TARGET AREAS USING HYDROLOGICAL TREE SPADES. THE SIZE OF SPADE SHALL VARY FROM 90" TO 45" DEPENDING ON THE SIZE AND TYPE OF VEGETATION TO BE MOVED. THE APPLICANT SHALL IDENTIFY PRIOR TO THE CLEARING OF THE SITE ALL EXISTING NATIVE VEGETATION TO BE RELOCATED. FOLLOWING RELOCATION, VEGETATION SHALL BE WATERED DAILY FOR A PERIOD NOT LESS THAN 90 DAYS AFTER WHICH IT SHALL BE WATERED ON AN AS NEEDED BASIS TO INSURE SURVIVAL. AT A MINIMUM THE APPLICANT SHALL INSURE 60% SURVIVAL FOR ALL RELOCATED PLANT MATERIAL.

PLANT SCHEDULE PHASE I

Table with columns: TREES, QTY, BOTANICAL NAME, COMMON NAME, CONT, GAL, SIZE, NATIVE, REMARKS. Lists various tree species like Bursera Simarouba, Citrusus Sempervirens, etc.

Table with columns: PALM TREES, QTY, BOTANICAL NAME, COMMON NAME, CONT, GAL, SIZE, NATIVE, REMARKS. Lists palm species like Chamorro Palm, Livistona Nitida, etc.

Table with columns: SHRUBS, QTY, BOTANICAL NAME, COMMON NAME, CONT, SIZE, SPACE, NATIVE, REMARKS. Lists shrub species like Gaineville Blue Agave, Red Tip Coccoloba, etc.

Table with columns: GROUND COVERS, QTY, BOTANICAL NAME, COMMON NAME, CONT, SIZE, SPACE, NATIVE, REMARKS. Lists ground cover species like Dichroanthus Icazo, etc.

Table with columns: SOD/SEED, QTY, BOTANICAL NAME, COMMON NAME, CONT, SIZE, SPACE, NATIVE, REMARKS. Lists sod and seed materials like St. Augustine Grass.

LANDSCAPE SPECIFICATIONS

1. GENERAL LANDSCAPE REQUIREMENTS

LANDSCAPE CONTRACT WORK INCLUDES, BUT IS NOT LIMITED TO, SOIL PREPARATION, FINE OR FINISH GRADING, FURNISHING AND INSTALLING PLANT MATERIAL, WATERING, STAKING, GUYPING AND MULCHING.

PLANT SIZE AND QUALITY TREES, PALMS, SHRUBS, GROUNDCOVERS.

ALL SPECIES AND SIZES SHALL CONFORM TO THOSE INDICATED ON THE DRAWINGS. NOMENCLATURE SHALL CONFORM TO STANDARD PLANT NAMES, 1942 EDITION. ALL NURSERY STOCK SHALL BE IN ACCORDANCE WITH GRADES AND STANDARDS FOR NURSERY PLANTS PARTS 1 & 2, EDITION PUBLISHED BY THE FLORIDA DEPARTMENT OF AGRICULTURE AND CONSUMER SERVICES.

ALL CONTAINER GROWN MATERIAL SHALL BE HEALTHY, VIGOROUS, WELL-ROOTED PLANTS AND ESTABLISHED IN THE CONTAINER IN WHICH THEY ARE SOLD. THE PLANTS SHALL HAVE TOPS OF GOOD QUALITY AND BE IN A HEALTHY GROWING CONDITION.

AN ESTABLISHED CONTAINER GROWN PLANT SHALL BE TRANSPLANTED INTO A CONTAINER AND GROWN IN THAT CONTAINER SUFFICIENTLY LONG ENOUGH FOR THE NEW FIBROUS ROOTS TO LAKE DEVELOPE SO THAT THE ROOT MASS WILL RETAIN ITS SHAPE AND HOLD TOGETHER WHEN REMOVED FROM THE CONTAINER.

STANDARD PLANTING MIXTURE SHALL BE ONE (1) PART RECYCLED ORGANIC MATERIAL ADDED TO THREE (3) PARTS EXISTING NATIVE SOIL.

REPLACEMENT SOIL SHALL BE USED AS SPECIFIED TO REPLACE EXISTING SOILS THAT ARE DETERMINED BY THE LANDSCAPE ARCHITECT TO BE UNSUITABLE FOR PLANTING. I.E. ROAD BASE, PAVEMENT, ETC.

MULCH SHALL BE SHREDDED MELALEUCA, EUCALYPTUS OR GRADE "A" RECYCLED. ALL MULCH IS TO BE APPLIED TO A DEPTH OF 1/2", EXCEPT AS OTHERWISE NOTED.

FERTILIZER IN BACKFILL MIXTURE FOR ALL PLANTS SHALL CONSIST OF MILDORGANIC ACTIVATED SLUDGE MIXED WITH THE BACKFILL AT A RATE OF NOT LESS THAN 50 LBS. PER CUBIC YARD.

FERTILIZER FOR TREES AND SHRUBS MAY BE TABLET FORM OR GRANULAR. GRANULAR FERTILIZER SHALL BE UNIFORM IN COMPOSITION, DRY AND FREE-FLOWING. THIS FERTILIZER SHALL BE DELIVERED TO THE SITE IN THE ORIGINAL UNOPENED BAGS EACH BEARING THE MANUFACTURER'S STATEMENT OF ANALYSIS, AND SHALL MEET THE FOLLOWING REQUIREMENTS: 16% NITROGEN, 7% PHOSPHORUS, 12% POTASSIUM, PLUS IRON. TABLET FERTILIZER (AGRIFORM OR EQUAL) IN 21 GRAM BAGS SHALL MEET THE FOLLOWING REQUIREMENTS: 20% NITROGEN, 10% PHOSPHORUS AND 5% POTASSIUM.

FERTILIZER WILL BE APPLIED AT THE FOLLOWING RATES: PLANT SIZE 16-7-12 AGRIFORM TABLETS (21 GRAM)

1 GAL. 1/4 LB. 1
3 GAL. 1/3 LB. 3
1'-6" CALIPER 2 LBS. 1/2" CALIPER 2 PER 1" CALIPER
6" AND LARGER 3 LBS. 1/2" CALIPER 2 PER 1" CALIPER

FLORIDA EAST COAST PALM SPECIAL SHALL BE APPLIED TO ALL PALMS AT INSTALLATION AT A RATE OF 1/2 LB. PER INCH OF TRUNK UNLESS OTHERWISE SPECIFIED.

FIELD GROWN TREES AND PALMS PREVIOUSLY ROOT PRUNED SHALL OBTAIN A ROOT BALL WITH SUFFICIENT ROOTS FOR CONTINUED GROWTH WITHOUT RESULTING SHOCK.

CONTRACTOR SHALL NOT MARK OR SCAR TRUNK IN ANY FASHION.

PLANTS SHALL BE WATERED AS NECESSARY OR WITHIN 24 HOURS AFTER NOTIFICATION BY THE LANDSCAPE ARCHITECT.

THE LOCATIONS OF PLANTS, AS SHOWN IN THESE PLANS, ARE APPROXIMATE. THE FINAL LOCATIONS MAY BE ADJUSTED TO ACCOMMODATE UNPREFESED FIELD CONDITIONS. MAJOR ADJUSTMENTS TO THE LAYOUT ARE TO BE APPROVED BY THE LANDSCAPE ARCHITECT.

ALL PLASTIC FABRIC SHALL BE REMOVED FROM PLANT MATERIAL AT TIME OF INSTALLATION.

ALL TREES MUST BE STAKED AS SHOWN ON THE PLANTING DETAILS WITHIN 24 HOURS OF PLANTING. STAKES TO REMAIN FOR A MINIMUM OF 9 MONTHS, BUT NO LONGER THAN 18 MONTHS. CONTRACTOR IS RESPONSIBLE FOR MAINTENANCE AND REMOVAL OF THE STAKES.

ALL TREES MUST BE PRUNED AS PER LANDSCAPE ARCHITECT'S DIRECTION. SABAL PALMS MAY BE BURNGRANE CUT.

ALL SHRUBS, TREES AND GROUND COVER WILL HAVE IMPROVED SOIL AS PER PLANTING SOIL NOTES. THE SOILS SHALL BE PLACED IN THE HOLE DURING PLANTING. TOP DRESSING ONLY IS NOT ACCEPTABLE.

DO NOT ALLOW AIR POCKETS TO FORM WHEN BACKFILLING. ALL TREES SHALL BE SPIKED IN UTILIZING WATER AND A TREE BAR.

THE LANDSCAPE CONTRACTOR SHALL WATER, MULCH, WEED, PRUNE, AND OTHERWISE MAINTAIN ALL PLANTS, INCLUDING SOD, UNTIL COMPLETION OF CONTRACT OR ACCEPTANCE BY THE LANDSCAPE ARCHITECT. SETTLED PLANTS SHALL BE RESE TO PROPER GRADE, PLANTING SAUCERS RESTORED, AND DEFECTIVE WORK CORRECTED.

THE LANDSCAPE CONTRACTOR SHALL AT ALL TIMES KEEP THE PREMISES FREE FROM ACCUMULATION OF WASTE MATERIALS OR DEBRIS CAUSED BY HIS CREWS DURING THE PERFORMANCE OF THE WORK. UPON COMPLETION OF THE WORK, THE CONTRACTOR SHALL PROMPTLY REMOVE ALL WASTE MATERIALS, DEBRIS, UNUSED PLANT MATERIAL, EMPTY PLANT CONTAINERS AND ALL EQUIPMENT FROM THE PROJECT SITE.

UPON COMPLETION OF THE WORK, THE LANDSCAPE CONTRACTOR SHALL NOTIFY THE LANDSCAPE ARCHITECT IN WRITING OF HIS ESTABLISHMENT AND SURVIVAL OF THE PROPOSED DEVELOPMENT, AS WELL AS ALL UNACCEPTABLE BY THE LANDSCAPE ARCHITECT OR OWNER'S REPRESENTATIVE SHALL BE CORRECTED BY THE LANDSCAPE CONTRACTOR WITHIN 14 DAYS.

ALL LABOR AND MATERIAL FOR SOIL AMENDMENTS AND FERTILIZER THAT IS REQUIRED TO INSURE THE SUCCESSFUL ESTABLISHMENT AND SURVIVAL OF THE PROPOSED DEVELOPMENT, AS WELL AS ALL THE COST FOR THE REMOVAL OF UNSUITABLE OR EXCESS BACKFILL MATERIAL, SHALL BE INCLUDED IN THE CONTRACTOR'S BID TO PERFORM THE WORK REPRESENTED IN THIS PLAN SET.

PLANT SCHEDULE PHASE II

Table with columns: TREES, QTY, BOTANICAL NAME, COMMON NAME, CONT, GAL, SIZE, NATIVE, REMARKS. Lists various tree species like Florida Flame Red Maple, Bursera Simarouba, etc.

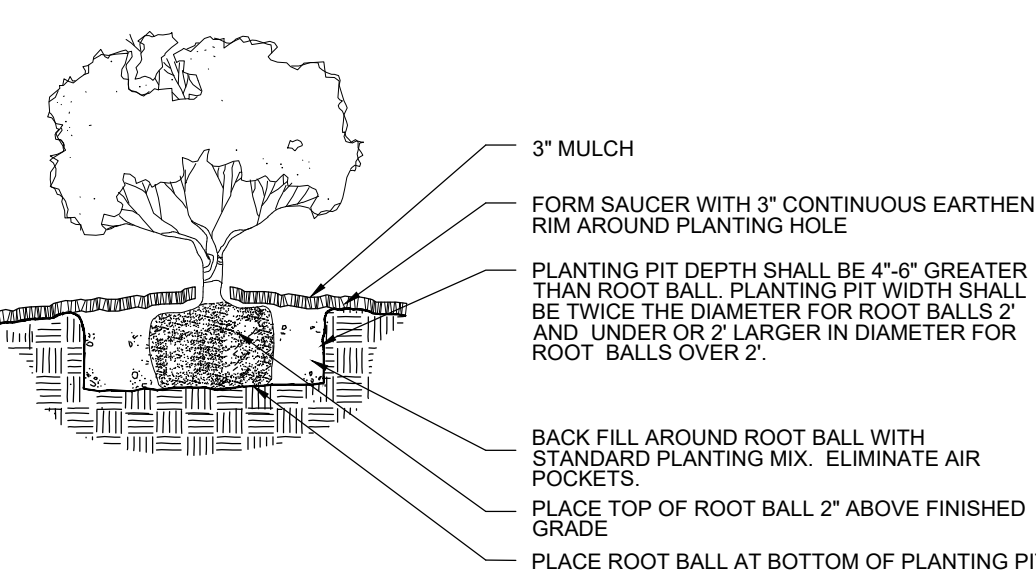
Table with columns: PALM TREES, QTY, BOTANICAL NAME, COMMON NAME, CONT, GAL, SIZE, NATIVE, REMARKS. Lists palm species like European Fan Palm, Sylvester Date Palm, etc.

Table with columns: SHRUBS, QTY, BOTANICAL NAME, COMMON NAME, CONT, SIZE, SPACE, NATIVE, REMARKS. Lists shrub species like Gaineville Blue Agave, Red Tip Coccoloba, etc.

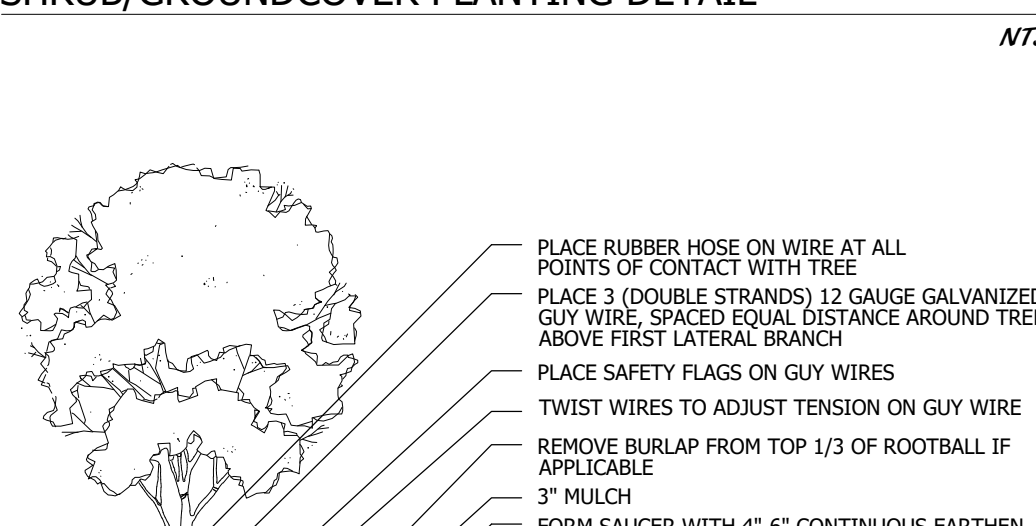
Table with columns: GROUND COVERS, QTY, BOTANICAL NAME, COMMON NAME, CONT, SIZE, SPACE, NATIVE, REMARKS. Lists ground cover species like Dichroanthus Icazo, etc.

Table with columns: SOD/SEED, QTY, BOTANICAL NAME, COMMON NAME, CONT, SIZE, SPACE, NATIVE, REMARKS. Lists sod and seed materials like St. Augustine Grass.

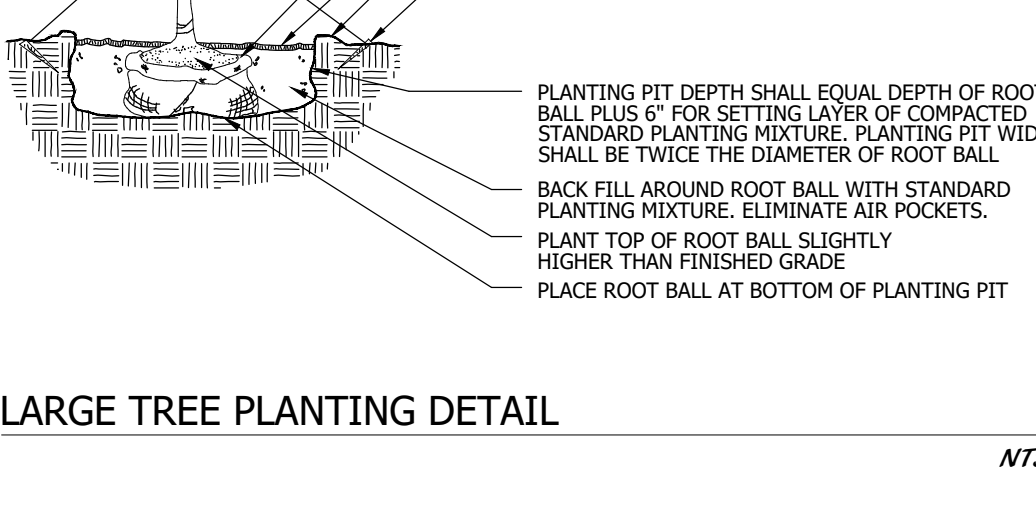
PLANTING DETAILS



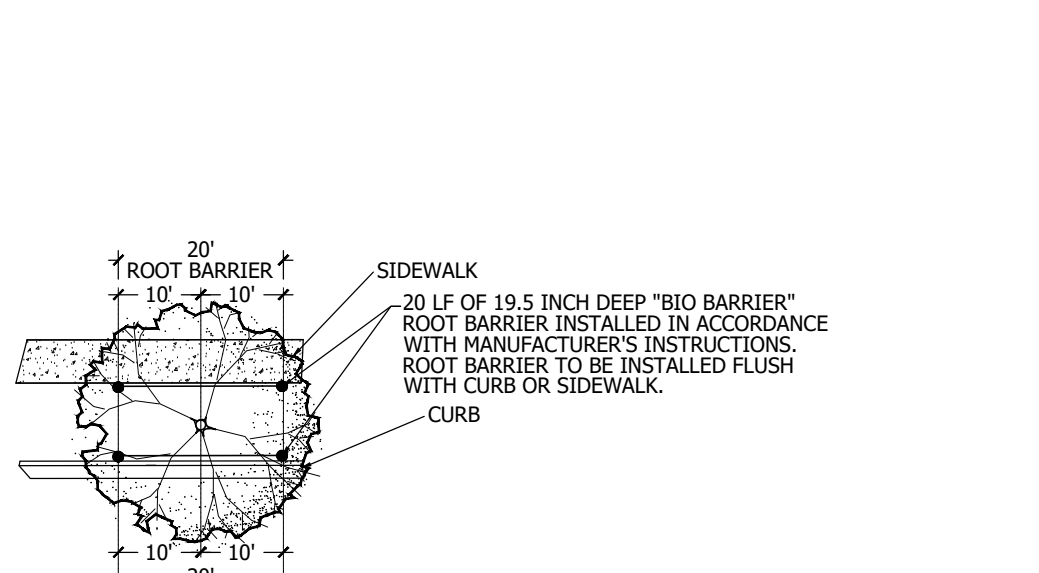
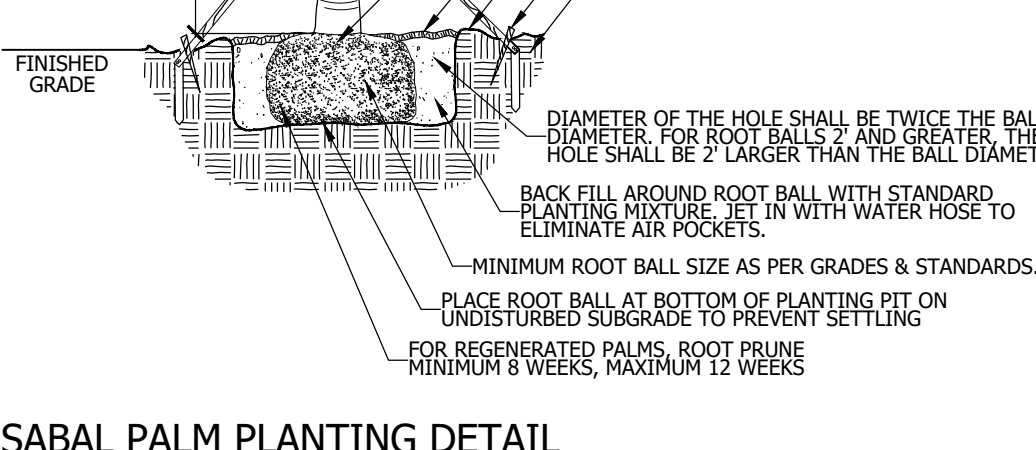
SHRUB/GROUNDCOVER PLANTING DETAIL



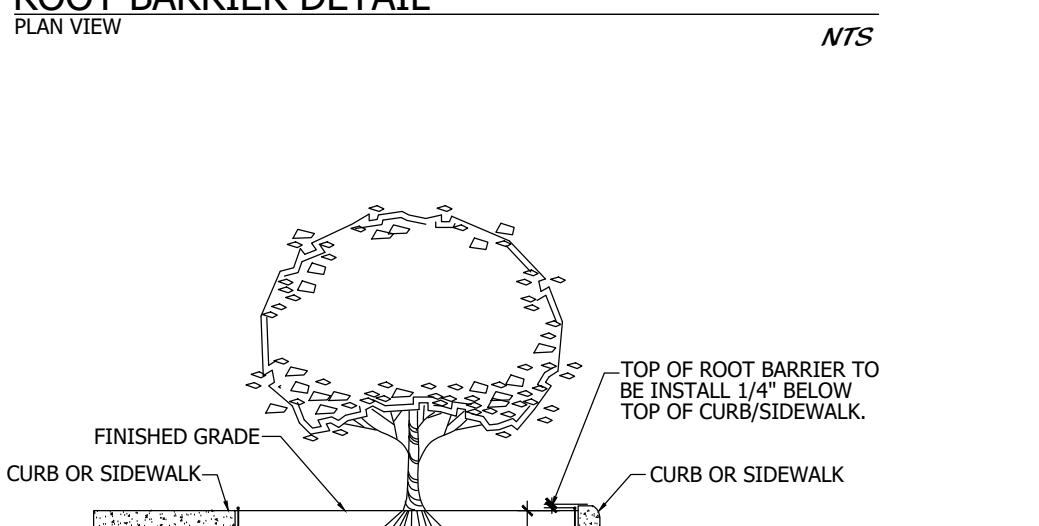
LARGE TREE PLANTING DETAIL



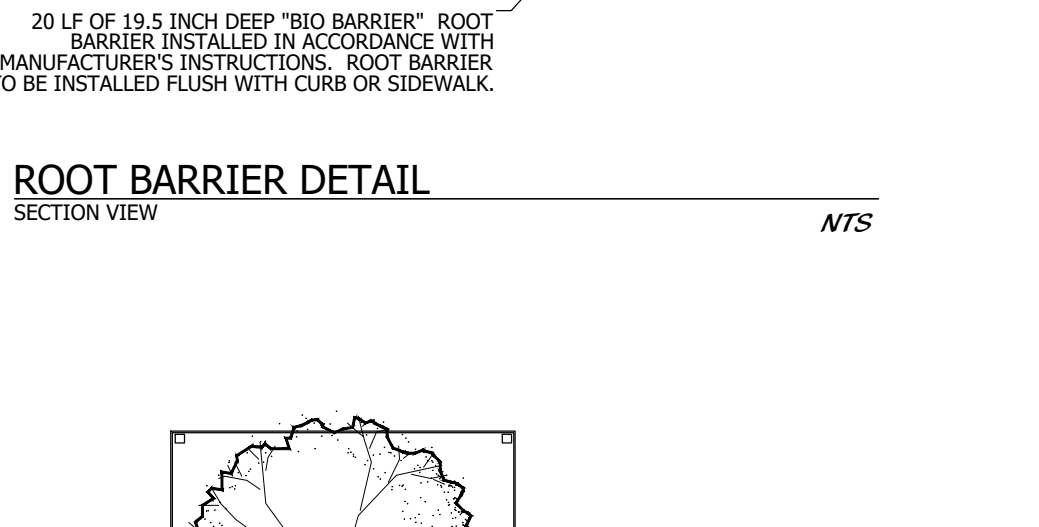
SABAL PALM PLANTING DETAIL



TREE PROTECTION DETAIL



WOOD STAKING DETAIL



Cotleur & Hearing logo and contact information: Landscpe Architects, Land Planners, Environmental Consultants. 1934 Commerce Lane, Suite 1, Jupiter, Florida 33458.

Gatlin Pointe Phase II Landscape Details, Port St. Lucie, Florida. Large vertical title.

Scale: 1" = 20'. Drawing information including DESIGNED BY (DEH), DRAWN BY (RH), APPROVED BY (DEH), JOB NUMBER (20-074), DATE (10-04-21), REVISIONS (01-25-21 to 08-21-23).