

RIVERLAND ASSOCIATES I LLLP
 1600 SAWGRASS CORPORATE PKWY
 SUITE 400
 SUNRISE, FLORIDA 33323

Project:
 RIVERLAND

P18-183

Sheet title:
 Sport/Racquet
 Facility, Landscape
 Plan Phase II / III

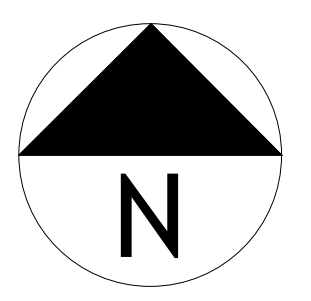
Date:
 05-20-20

Scale:
 1"=30'-0"



Know what's below.
 Call before you dig.

- Revisions:
1. Comments, Site Drainage etc. 09-15-20
 2. Comments 10-15-20
 3. Comments 10-20-20
 4. Comments 02-17-21

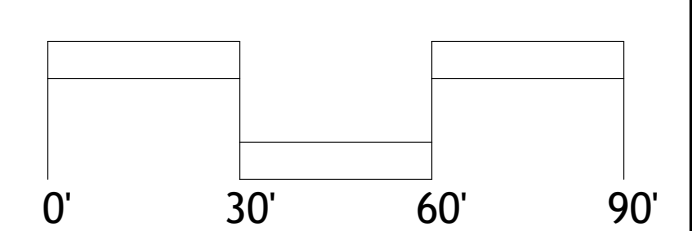


Sheet number:

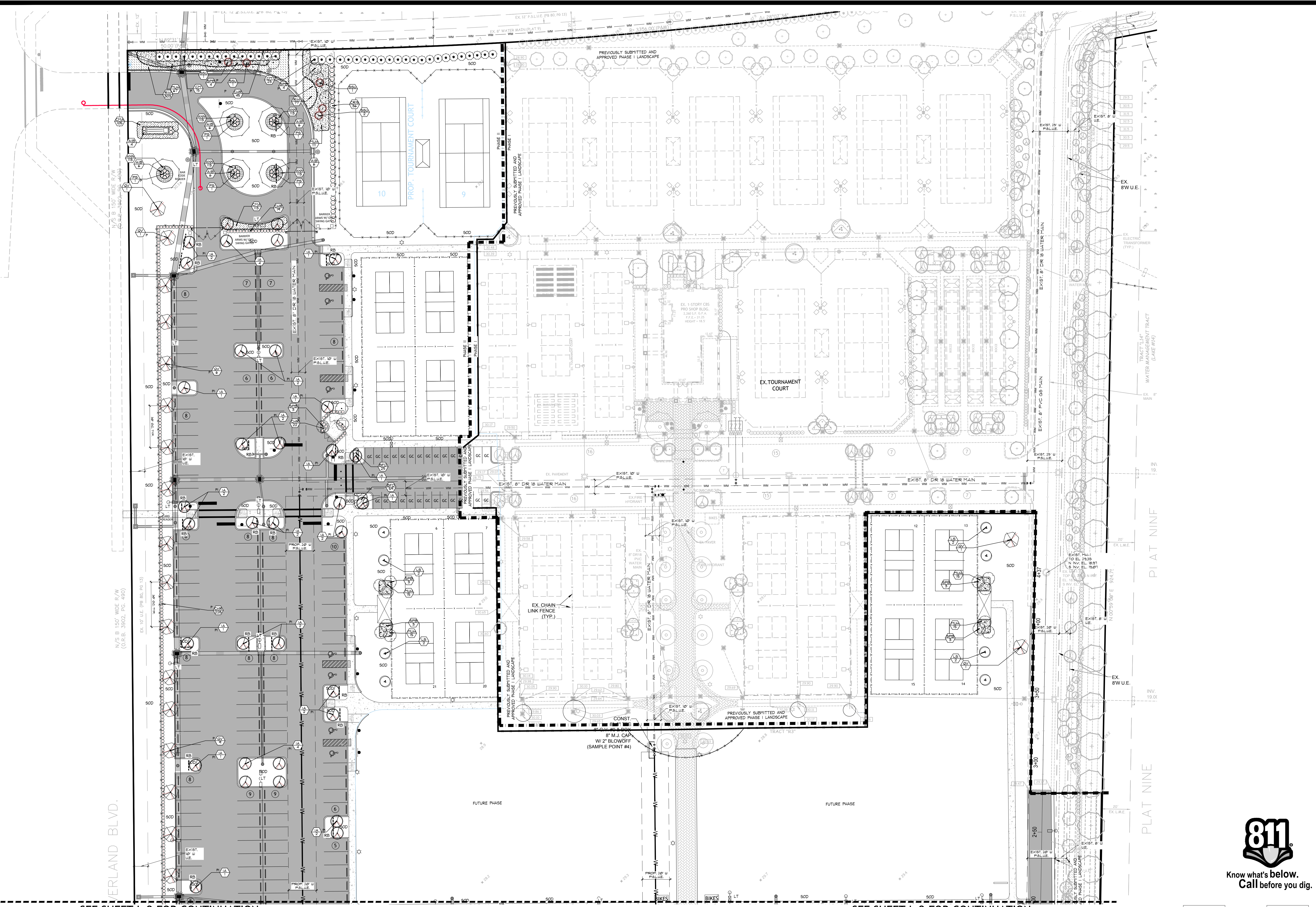
L-1



Know what's below.
 Call before you dig.



Seal

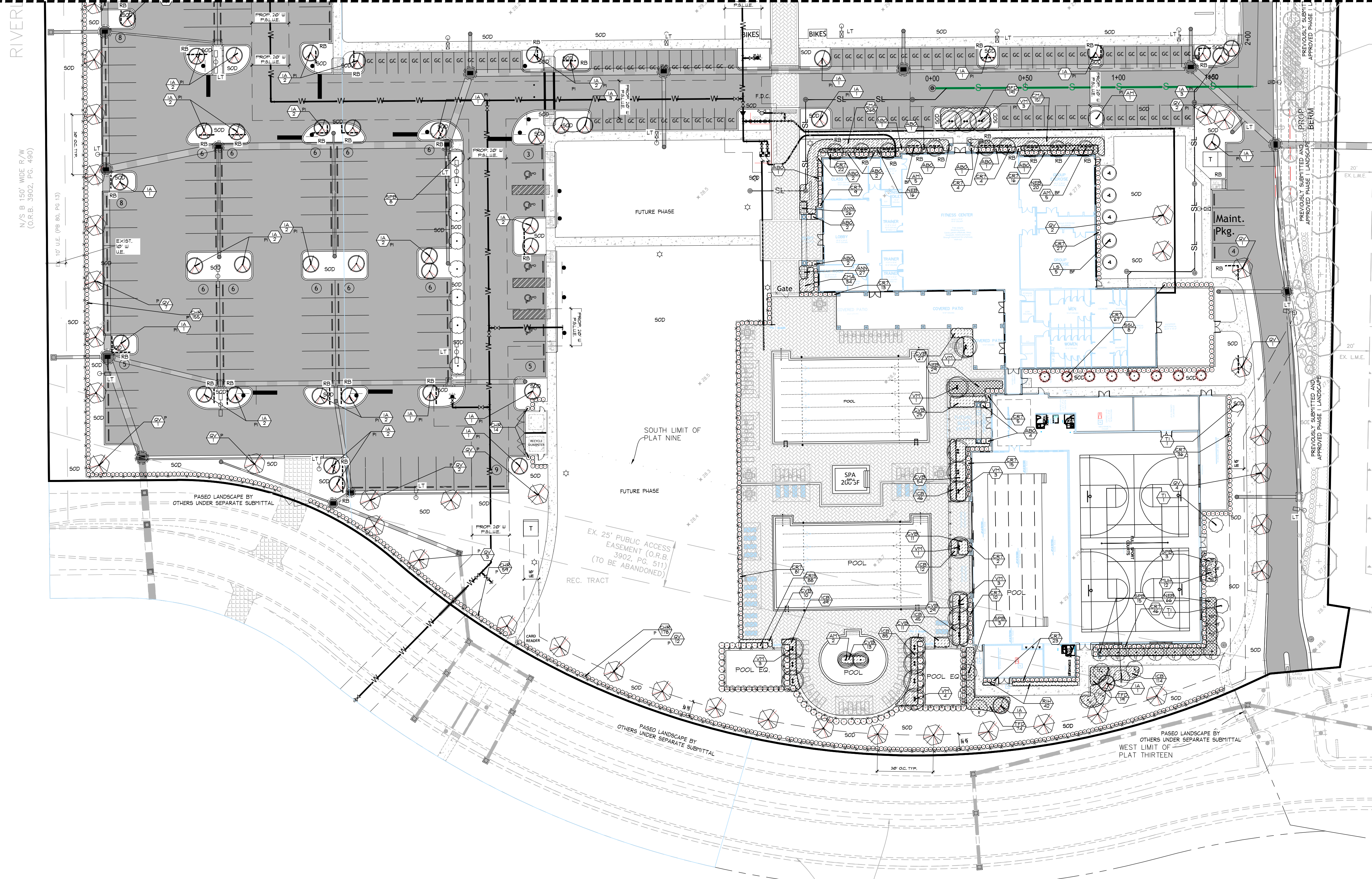


SEE SHEET L-2 FOR CONTINUATION

SEE SHEET L-2 FOR CONTINUATION

SEE SHEET L-1 FOR CONTINUATION

SEE SHEET L-1 FOR CONTINUATION



RIVERLAND ASSOCIATES I LLLP
 1600 SAWGRASS CORPORATE PKWY
 SUITE 400
 SUNRISE, FLORIDA 33323

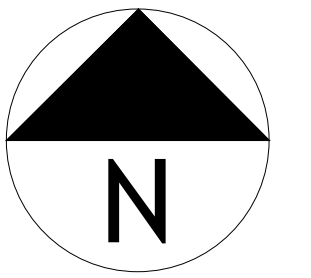
Project:
 RIVERLAND

P18-183
 Sheet title:
 Sport/Racquet
 Facility, Landscape
 Plan Phase II / III

Date:
 05-20-20

Scale:
 1"=30'-0"

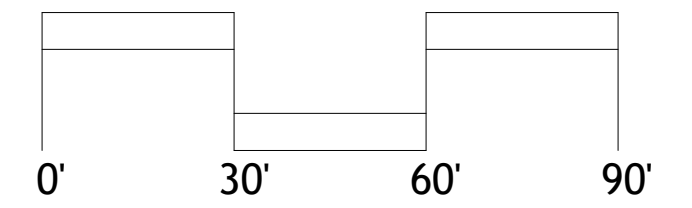
- Revisions:
1. Comments, Site Drainage etc. 09-15-20
 2. Comments 10-15-20
 3. Comments 10-20-20
 4. Comments 02-17-21



Sheet number:
L-2



Know what's below.
 Call before you dig.



Seal

Planting Material List

Trees	Botanical/Common	Cont	Cal	Size	NATIVE	Quantity	Remarks
LS	LAGERSTROEMIA SPECIOSA / QUEENS CREPE MYRTLE			10' HT. X 6' SPR.		13	
SSU	SENNA SURRATENSIS / CASSIA TREE			10' HT. X 6' SPR.		13	
TI	TABEBUIA IMPETIGINOSA / PINK TRUMPET TREE			10' HT. X 6' SPR.		3	
IA	ILEX X ATTENUATA 'EAGLESTON' / EAGLESTON HOLLY		2.5" cal min	12' HT. X 6' SPR. 4' C.T.	*	76	
QV	QUERCUS VIRGINIANA / SOUTHERN LIVE OAK		2.5" cal min	12' HT. X 6' SPR	*	56	
Palm Trees	Botanical/Common	Cont	Cal	Size	NATIVE	Quantity	Remarks
AM	ADONIDIA MERRILLII / "CHRISTMAS PALM"		10' CT			13	Single Cane
CM	CARYOTA MITIS / FISHTAIL PALM			20' OAH		38	Full to base
PS	PHOENIX SYLVESTRIS / WILD DATE PALM		12' CT			5	
SPB	SABAL PALMETTO / SABAL PALM - BOOTED		12' CT		*	52	staggered
VM	VEITCHIA MONTGOMERYANA / MONTGOMERY PALM		16' CT			19	
Shrubs	Botanical/Common	Size	NATIVE	Quantity	Remarks		
ABO	AECHMEA BLANCHETIANA / ORANGE BROMELIAD	15 GAL	36" OVERALL		15		
AIB	ALCANTAREA IMPERIALIS / IMPERIAL BROMELIAD	15 GAL	24" HT		34		
CHR	CHRYSOBALANUS ICACO / COCO PLUM	7 GAL	24" HT X 24" SPR	*	720		
CR15	CLUSIA ROSEA / PITCH APPLE	15 GAL	36" OVERALL	*	124		
CR7	CLUSIA ROSEA / PITCH APPLE	7 GAL	24" HT	*	380		
Shrub Areas	Botanical/Common	Cont	NATIVE	Spacing	Quantity	Remarks	
BFD	BULBINE FRUTESCENS / "DESERT CANDLES"	3 GAL		15" o.c.	275		
CMA	CARISSA MACROCARPA / EMERALD BLANKET	3 GAL		18" o.c.	671		
CVB	CODIAEUM VARIEGATUM / BRAVO CROTON	3 GAL		24" o.c.	180		
ICB	ILEX CORNUTA 'BURFORDI' / BURFORDS HOLLY	3 GAL		18" o.c.	351		
MUH	MUHLENBERGIA CAPILLARIS / PINK MUHLY	3 GAL		24" o.c.	250		
NEB	NEPHROLEPIS BISERRATA / GIANT SWORDFERN	1 GAL		30" o.c.	131		
TFD	TRIPSACUM FLORIDANA / DWF FAKAHATCHEE GRASS	3 gal.		24" o.c.	93		
RIH	RAPHIOLEPIS INDICA / INDIAN HAWTHORN	3 GAL		18" o.c.	422		
Ground Covers	Botanical/Common	Cont	Spacing	Quantity	Remarks		
ANN	ANNUALS / COLOR/SPECIES TO BE APPROVED BY LA OR CLIENT	4" POT	12" HT	12" o.c.	618		
SOD	STENOTAPHRUM SECUNDA/TUM / ST AUGUSTINE SOD		Solid weed free panels installed staggered				

PERIMETER TREES REQUIRED = 40 (1 / 30')
 PERIMETER TREES PROVIDED = 41 (1/30')

PERIMETER / PARKING HEDGE REQUIRED = CONTINUOUS HEDGE
 PERIMETER / PARKING HEDGE PROVIDED = CONTINUOUS HEDGE, 639)

PARKING ISLAND TREES REQUIRED = 1 / ISLAND = 56 TREES
 PARKING ISLAND TREES PROVIDED = 1 / ISLAND = 56 TREES

BUILDING FACED TREES REQUIRED = 654 / 30 = 21 TREES REQUIRED
 BUILDING FACED TREES PROVIDED = 31 TREES AND PALMS

100% OF REQUIRED HEDGES NATIVE
 100% OF REQUIRED PERIMETER AND PARKING ISLAND TREES NATIVE

Planting Specifications

NAMES AND GRADES
 PLANT SPECIES AND SIZE SHALL CONFORM TO THOSE INDICATED ON THE DRAWINGS. NOMENCLATURE SHALL CONFORM TO STANDARDIZED PLANT NAMES, 1942 EDITION. ALL NURSERY STOCK SHALL BE IN ACCORDANCE WITH GRADES AND STANDARDS FOR NURSERY PLANTS PARTS 1 & 2, LATEST EDITION PUBLISHED BY THE FLORIDA DEPARTMENT OF AGRICULTURE AND CONSUMER SERVICES. ALL PLANTS NOT OTHERWISE SPECIFIED AS BEING FLORIDA FANCY OR SPECIMEN SHALL BE FLORIDA GRADE #1 OR BETTER AS DETERMINED BY THE FLORIDA DIVISION OF PLANT INDUSTRY. SPECIMEN MEANS AN EXCEPTIONALLY HEAVY, SYMMETRICAL, TIGHTLY KNIT PLANT, SO TRAINED OR FAVORED IN ITS DEVELOPMENT THAT FIRST APPEARANCE IS UNQUESTIONABLY AND OUTSTANDINGLY SUPERIOR IN FORM, NUMBER OF BRANCHES, COMPACTNESS AND SYMMETRY.

GENERAL REQUIREMENTS
 ALL PLANTS SHALL BE FRESHLY DUG, SOUND, HEALTHY, VIGOROUS, WELL BRANCHED AND FREE OF DISEASE AND INSECT EGGS AND LARVAE AND SHALL HAVE ADEQUATE ROOT SYSTEMS. TREES FOR PLANTING ROWS SHALL BE UNIFORM IN SIZE AND SHAPE. ALL MATERIALS SHALL BE SUBJECT TO APPROVAL BY THE LANDSCAPE ARCHITECT. WHERE ANY REQUIREMENTS ARE OMITTED FROM THE PLANT LIST, THE PLANTS FURNISHED SHALL BE NORMAL FOR THE VARIETY. PLANTS SHALL BE PRUNED PRIOR TO DELIVERY ONLY UPON THE APPROVAL OF THE LANDSCAPE ARCHITECT.

CONTAINER GROWN STOCK
 ALL CONTAINER GROWN STOCK SHALL BE HEALTHY, VIGOROUS, WELL ROOTED PLANTS AND ESTABLISHED IN THE CONTAINER IN WHICH THEY ARE SOLD. THE PLANTS SHALL HAVE TOPS WHICH ARE GOOD QUALITY AND IN A HEALTHY GROWING CONDITION. AN ESTABLISHED CONTAINER GROWN PLANT SHALL BE GROWN IN THAT CONTAINER SUFFICIENTLY LONG ENOUGH FOR THE NEW FIBROUS ROOTS TO HAVE DEVELOPED SO THAT THE ROOT MASS WILL RETAIN ITS SHAPE AND HOLD TOGETHER WHEN REMOVED FROM THE CONTAINER. PLANTS ROOT BOUND IN CONTAINERS ARE UNACCEPTABLE.

MEASUREMENTS
 TREES: HEIGHT SHALL BE MEASURED FROM GROUND TO THE AVERAGE HEIGHT OF CANOPY. SPREAD SHALL BE MEASURED TO THE END OF BRANCHING EQUALLY AROUND THE GROWN FROM THE CENTER OF THE TRUNK. MEASUREMENTS ARE NOT TO INCLUDE ANY TERMINAL GROWTH. SINGLE TRUNK TREES SHALL BE FREE OF Y CROTCHES THAT COULD BE POINTS OF WEAK LIMB STRUCTURE OR DISEASE INFESTATION.

SHRUBS: HEIGHT SHALL BE MEASURED FROM THE GROUND TO THE AVERAGE POINT WHERE MATURE PLANT GROWTH STOPS. SPREAD SHALL BE MEASURED TO THE END OF BRANCHING EQUALLY AROUND THE SHRUB MASS. TERMINAL GROWTH NOT INCLUDED. PALMS: CLEAR TRUNK (CT) SHALL BE MEASURED FROM THE GROUND AT TIME OF INSTALLATION TO THE POINT WHERE THE MATURE AGED TRUNK JOINS THE IMMATURE OR GREEN PORTION OF THE TRUNK OR THE HEAD. OVERALL HEIGHT (OA) SHALL BE MEASURED FROM THE GROUND AT THE TIME OF INSTALLATION TO A POINT THREE QUARTERS THE LENGTH OF THE UNOPENED BUD. PALMS WITH MARRED OR BURNED TRUNKS WILL NOT BE ACCEPTED.

SOIL
 PLANTING SOIL FOR USE IN PREPARING BACKFILL FOR PLANT PITS SHALL BE ADDED AT A RATE OF 75% TO 25% EXISTING SOIL. THIS SOIL MIX SHALL BE USED IN ALL PLANT PITS EXCEPT SABAL PALMS WHICH SHALL BE BACKFILLED WITH CLEAN SAND. PLANTING SOIL SHALL BE A FERTILE, FRIABLE NATURAL TOP SOIL OF LOAMY CHARACTER. IT SHALL CONTAIN 40 TO 50% DECOMPOSED ORGANIC MATTER AND SHALL BE FREE FROM HEAVY CLAY, STONES, LIME, PLANTS, ROOTS OR OTHER FOREIGN MATTER OR NOXIOUS WEEDS. IT SHALL NOT CONTAIN TOXIC SUBSTANCES WHICH MAY BE HARMFUL TO PLANT GROWTH.

LANDSCAPE NOTE
 THE LANDSCAPE ARCHITECT OF RECORD (LA) HAS ADVISED THE DEVELOPER AND/OR PROPERTY OWNER THAT PLANTING TREES IN CLOSE PROXIMITY TO EACH OTHER, STRUCTURES OR FLATWORK COULD RESULT IN GROWTH PROBLEMS WITH THE TREES, ASSOCIATED PLANT MATERIAL AND/OR SOD AND THE CLIENT HAS DIRECTED THE LA TO DESIGNATE THE TREES AND PLANT MATERIAL AS SHOWN HEREIN. AS SUCH, THE LA SHALL NOT BE HELD LIABLE FOR ANY ADVERSE EFFECTS TO ANY TREES, PALMS, PLANT MATERIAL, SOD, IRRIGATION, FLATWORK, STRUCTURES, HARDSCAPE ELEMENTS, VEHICLES, PEOPLE OR ANIMALS RESULTING FROM THE SPACING OR LOCATION OF TREES AND PLANT MATERIAL SHOWN HEREIN.

COMMERCIAL FERTILIZER
 TWO FERTILIZERS SHALL BE USED IN ALL TYPES OF PLANTINGS, EXCEPT PALMS. GRANULAR FERTILIZER SHALL BE UNIFORM IN COMPOSITION, DRY AND FREE FLOWING. THIS FERTILIZER SHALL BE DELIVERED TO THE SITE IN THE ORIGINAL UNOPENED BAGS EACH BEARING THE MANUFACTURERS STATEMENT OF ANALYSIS, AND SHALL MEET THE FOLLOWING REQUIREMENTS: 6% NITROGEN, 6% PHOSPHOROUS AND 6% POTASSIUM. TABLET FERTILIZER (AGRIFORM OR EQUAL) IN 21 GRAM SIZE SHALL MEET THE FOLLOWING REQUIREMENTS: 20% NITROGEN, 10% PHOSPHOROUS AND 5% POTASSIUM.

THE TWO FERTILIZERS WILL BE APPLIED AT THE FOLLOWING RATES:
 1 GALLON: 1/4LB OF 6-6-6 & 1 AGRIFORM TABLET
 3 GALLON: 1/3LB OF 6-6-6 & 2 AGRIFORM TABLETS

7-15 GALLON: 1/2LB OF 6-6-6 & 4 AGRIFORM TABLETS
 1" CALIPER: 2LBS OF 6-6-6 PER 1" CALIPER & 2 AGRIFORM TABLETS PER 1" CALIPER
 6" AND LARGER: 3LBS OF 6-6-6 PER 1" CALIPER & 2 AGRIFORM TABLETS PER 1" CALIPER
 FLORIDA EAST COAST PALM SPECIAL SHALL BE APPLIED TO ALL PALMS AT INSTALLATION AT A RATE OF 1/2 LB PER INCH OF TRUNK CALIPER UNLESS OTHERWISE SPECIFIED.

MULCH
 MULCH MATERIAL SHALL BE 3" DEPTH OF NON-CYPRESS GRADE #1 SHREDDED MULCH MOISTENED AT THE TIME OF APPLICATION TO PREVENT WIND DISPLACEMENT.

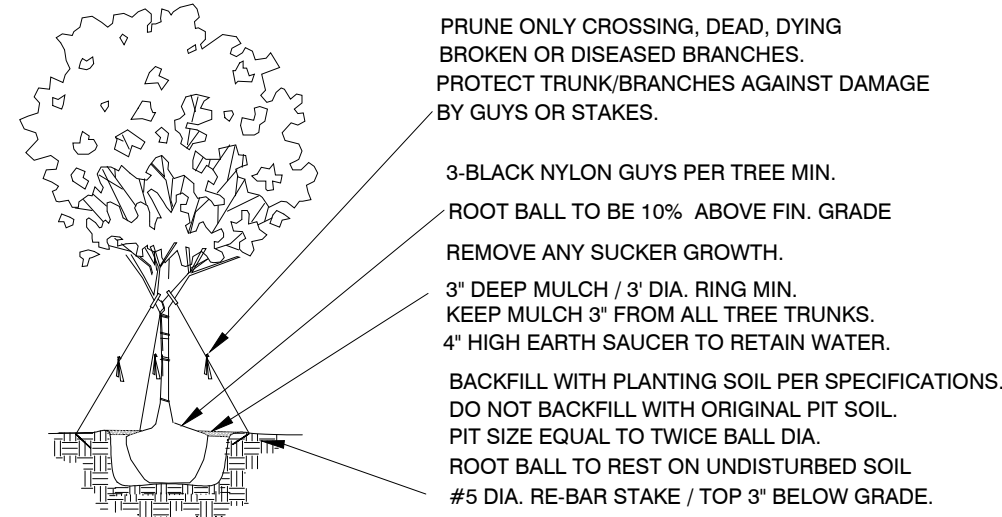
SOD
 SOD SHALL MEET FLORIDA STATE PLANT BOARD SPECIFICATION, ABSOLUTELY TRUE TO VARIETY, TYPE, AND FREE FROM WEEDS, FUNGUS, INSECTS AND DISEASES OF ANY KIND.

SUBSTITUTIONS
 NO SUBSTITUTIONS OF PLANT MATERIAL TYPES OR SIZES SHALL BE ALLOWED WITHOUT WRITTEN AUTHORIZATION FROM THE LANDSCAPE ARCHITECT AND CONTAINER GROWN MATERIAL WILL NOT BE ACCEPTED AS A SUBSTITUTE FOR

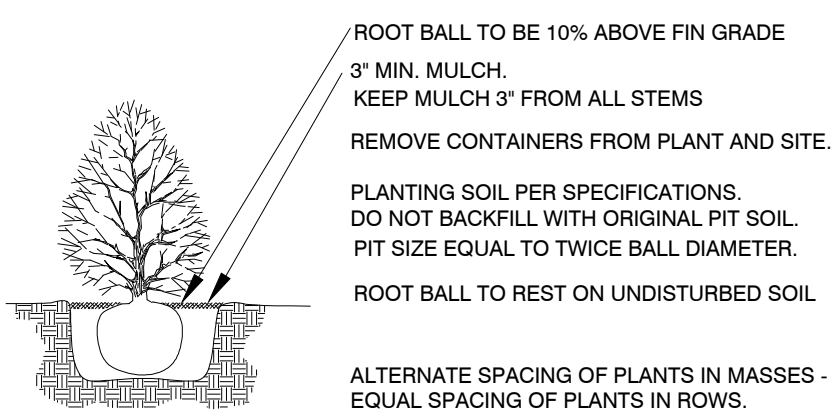
THE QUANTITIES AND LOCATIONS SHOWN HEREIN ARE FOR REFERENCE ONLY AND MAY CHANGE TO ACCOMMODATE FIELD CONDITIONS OR DESIGN CHANGES UNLESS THEY ARE REQUIRED TO SATISFY CODE REQUIREMENTS OR CONDITIONS OF APPROVAL BY THE GOVERNING AGENCY.

IRRIGATION NOTES:
 IRRIGATION SHALL BE PROVIDED VIA AN UNDERGROUND AUTOMATIC SPRINKLER SYSTEM FITTED WITH A RAIN SENSOR AND PROVIDING 100% COVERAGE

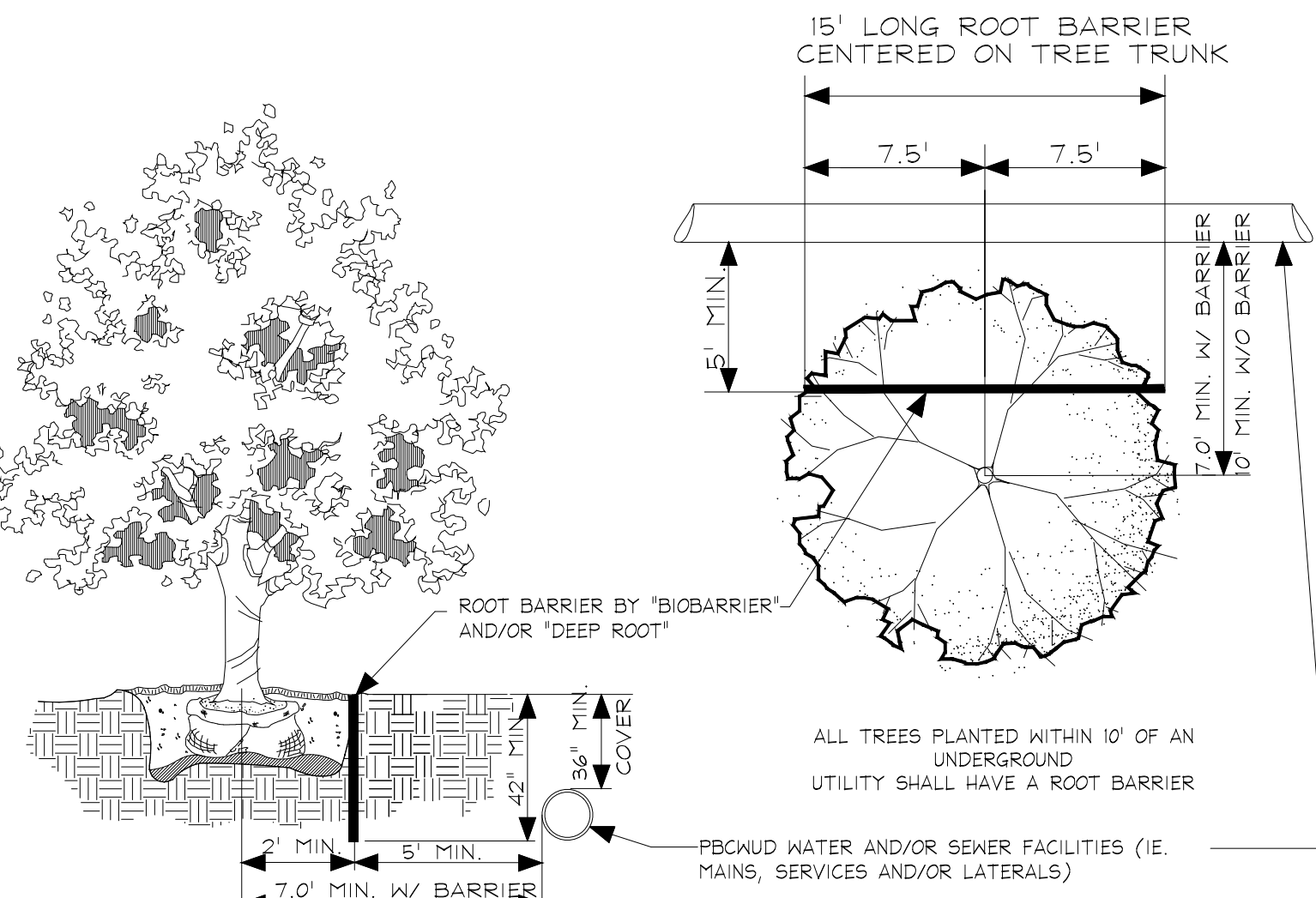
Planting Details



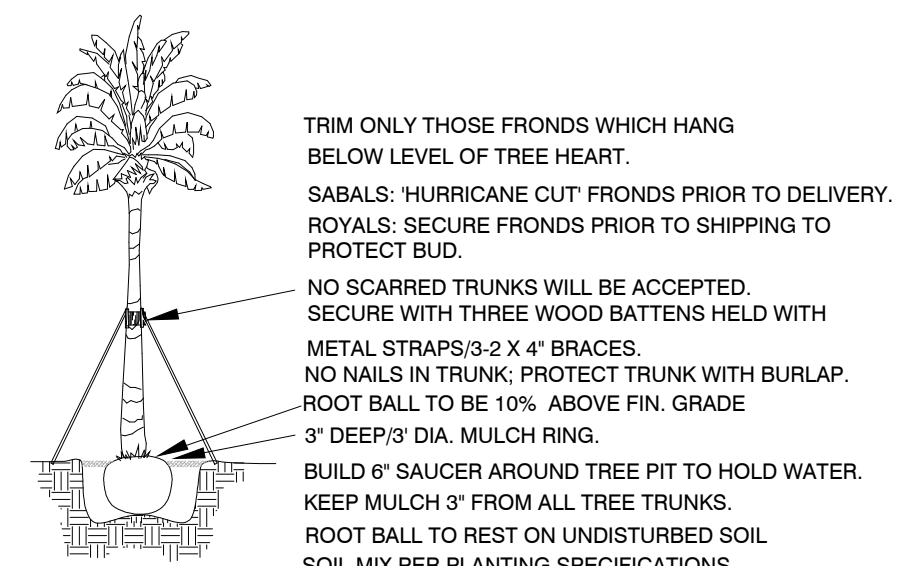
Tree Planting Detail N.T.S.



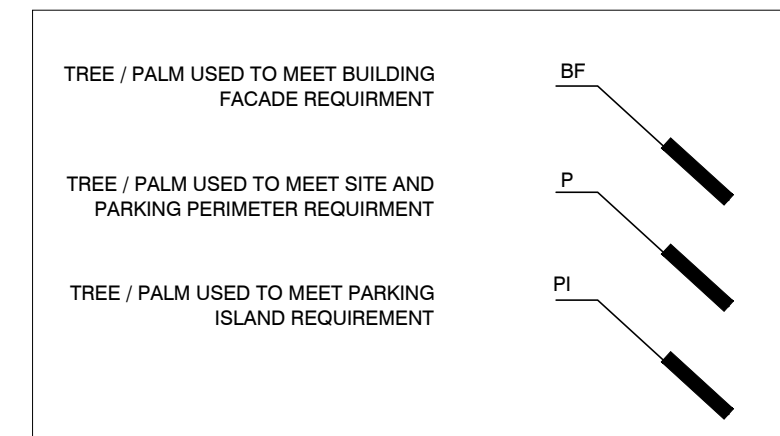
Shrub / Groundcover Planting Detail N.T.S.



Root barrier Detail N.T.S.

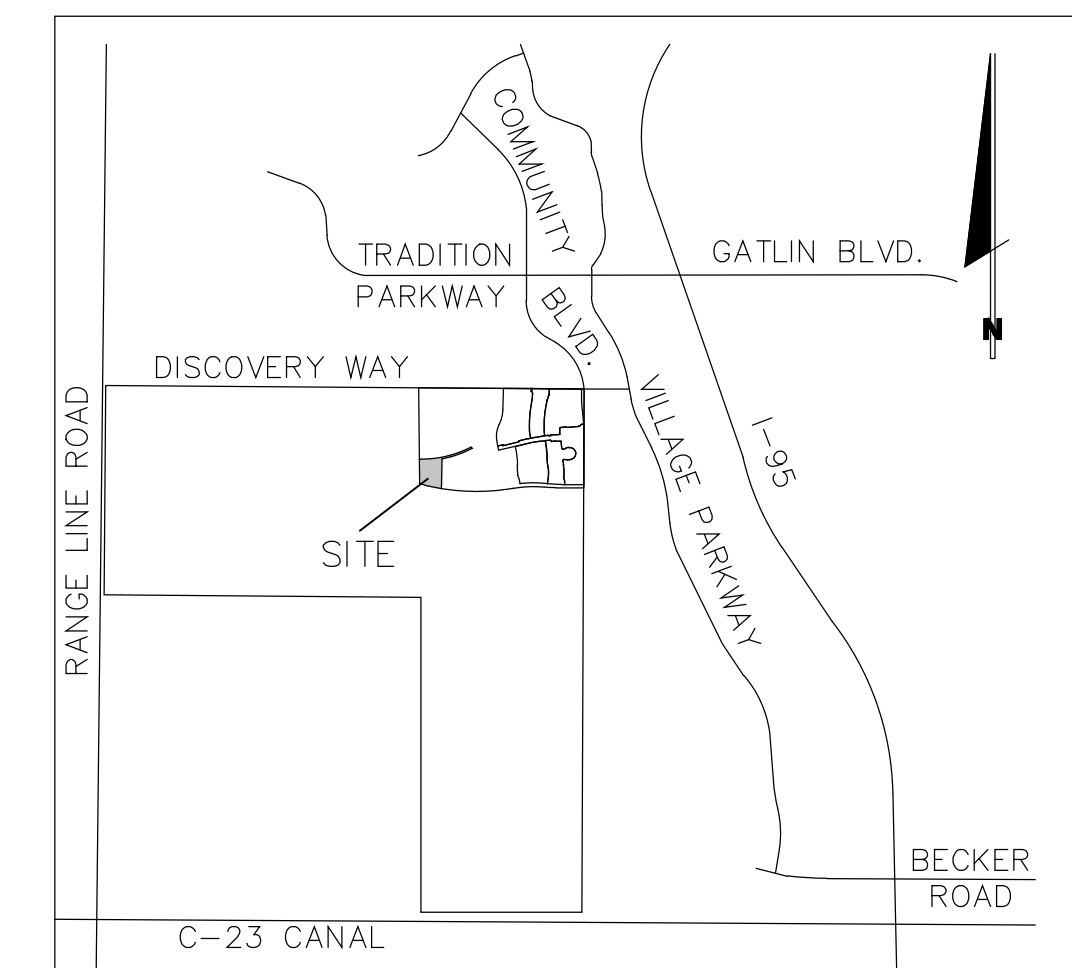


Palm Tree Planting Detail N.T.S.



PSLUSD Notes:

- ALL LANDSCAPING WITHIN (PSLUSD) UTILITY EASEMENTS SHALL COMPLY WITH CHAPTER 153 OF THE CITY AND PSLUSD UTILITY STANDARDS, DETAILS AND POLICIES.
- NO LANDSCAPING SHALL BE PLANTED IN SUCH A MANNER AS TO ADVERSELY AFFECT UTILITY INSTALLATION, OPERATION AND MAINTENANCE.
- ALL EXISTING AND PROPOSED UNDERGROUND UTILITY MAINS, APPURTENANCES, AND EASEMENTS MUST BE SHOWN ON THE LANDSCAPE PLANS.
- TREES SHALL NOT BE PLANTED WITHIN 10 FEET OF ANY PSLUSD MAINS OR APPURTENANCES, EXCEPT AS ALLOWED BY CITY OF PSLUSD LANDSCAPE POLICY.
- NO LANDSCAPING OTHER THAN SOD GRASSES MAY BE PLANTED WITHIN A 9' RADIUS MAINTENANCE AREA OF ANY PSLUSD APPURTENANCE SUCH AS WATER METERS, BACKFLOW DEVICES, FIRE HYDRANTS, SANITARY SEWER CLEANOUTS, AND MANHOLES, AIR RELEASE VALVES, ETC
- UTILITY & DRAINAGE EASEMENTS, TO REMAIN CLEAR OF TREES.



Location Map N.T.S.

RIVERLAND ASSOCIATES I LLLP
 1600 SAWGRASS CORPORATE PKWY
 SUITE 400
 SUNRISE, FLORIDA 33323

Project:
RIVERLAND

P18-183
 Sheet title:
Sport/Racquet Facility, Landscape Plan Phase II / III

Date:
 05-20-20

Scale:
 1"=30'-0"



Know what's below.
 Call before you dig.

- Revisions:
1. Comments, Site Drainage etc. 09-15-20
 2. Comments 10-15-20
 3. Comments 10-20-20
 4. Comments 02-17-21

Sheet number:
L-3

Seal