

Request to Name Tract R-1, Southern Grove Plat No. 33 SW Anthony F. Sansone Sr. Boulevard

Project No. P20-171
City Council Meeting
July 28, 2021
Bridget Kean, AICP
Senior Planner

Applicant and Owner

Culpepper and Terpening, Inc. acting as the agent for the Sansone Group, LLC.

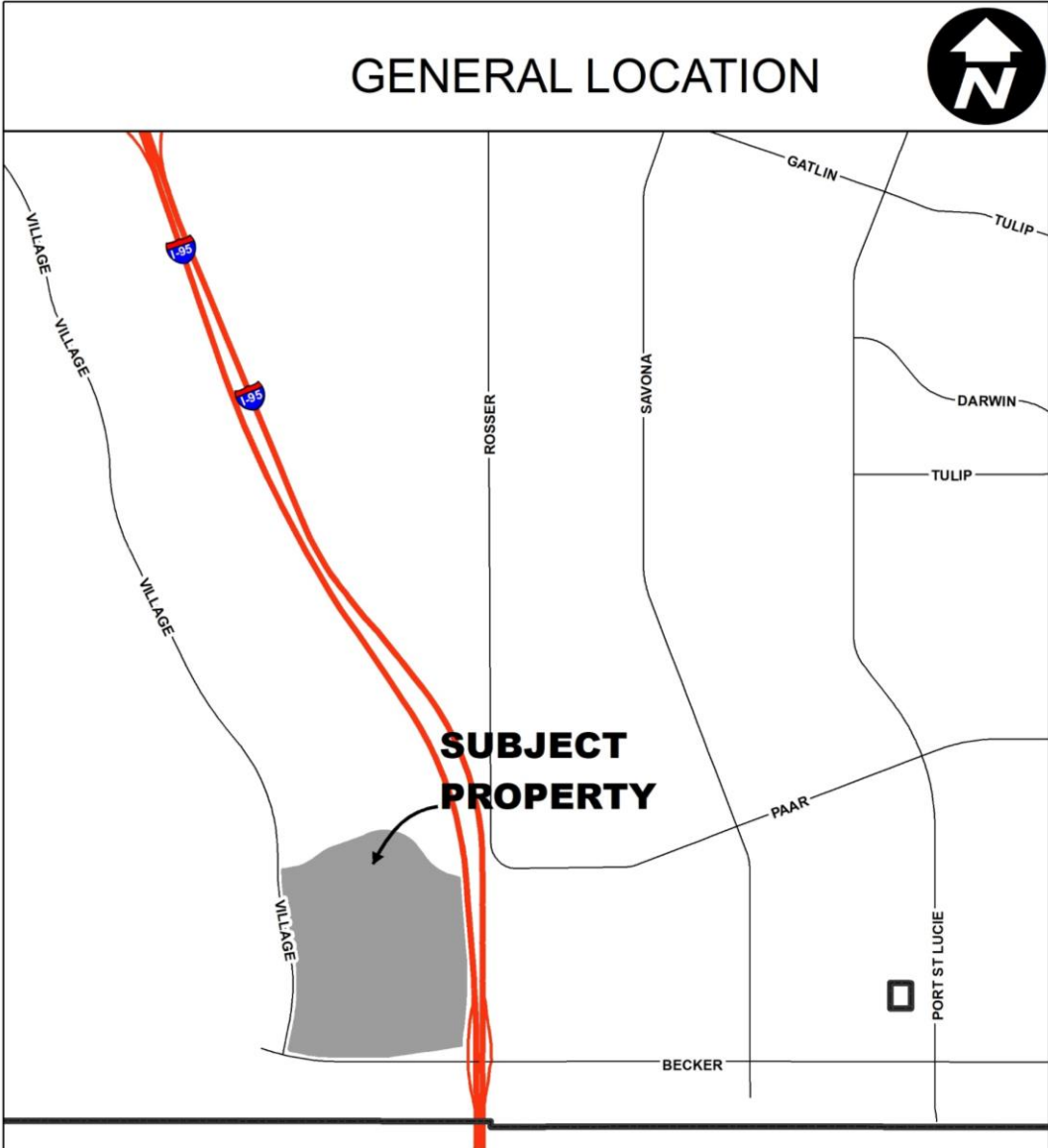


Request

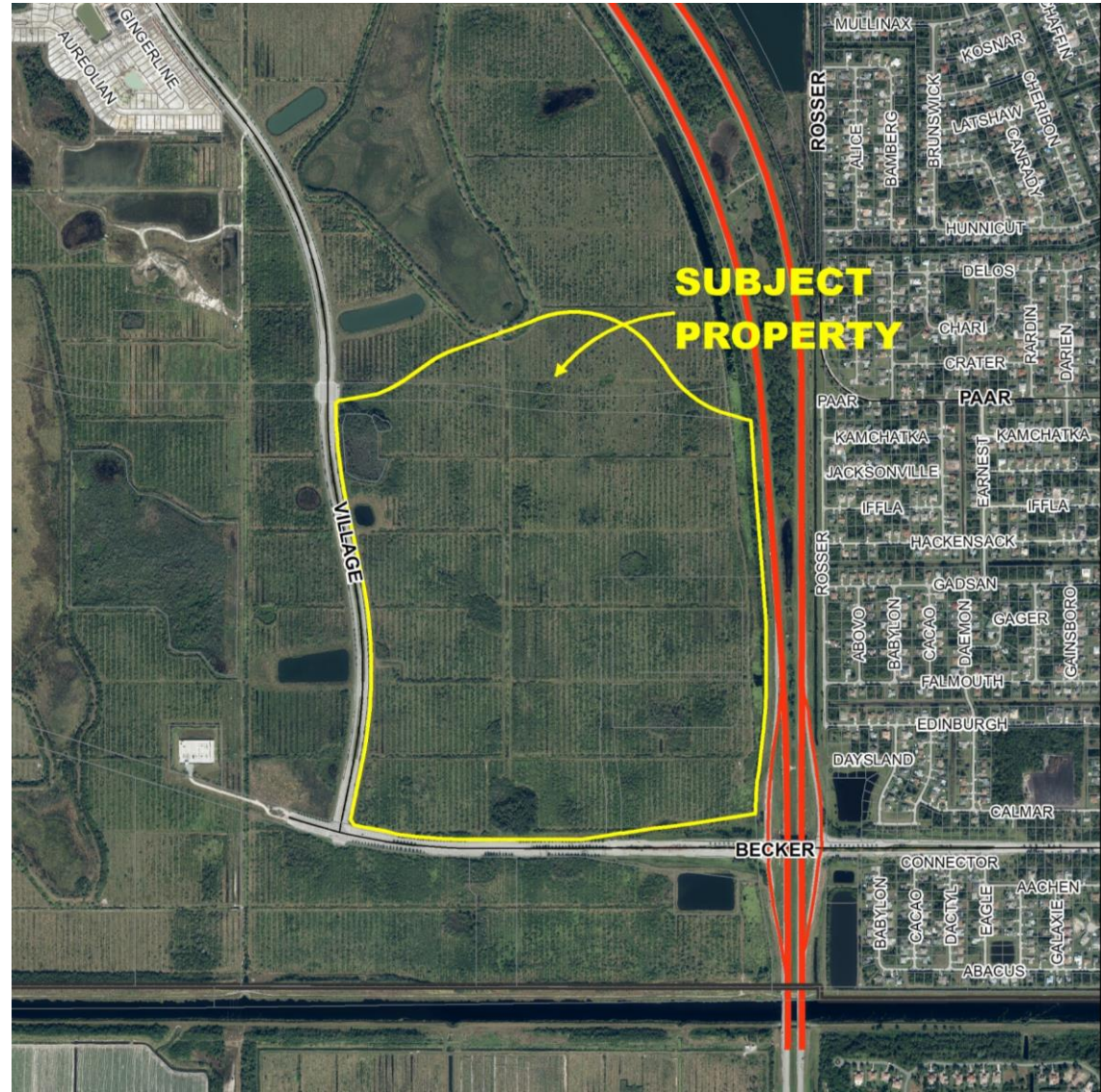
- The Sansone Group, LLC, is requesting Tract R-1, Southern Grove Plat No. 33, be named SW Anthony F. Sansone Sr. Boulevard after the company's founder.
- Southern Grove Plat No. 33 was approved by the City Council on January 4, 2021.



Location Map



Aerial



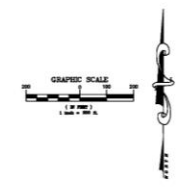
Naming of Road Right-of-Way

- Street names are identified on a plat or approved via a resolution of the City Council naming the right-of-way.
- City Council Directed Policy # 19-04ccd establishes the procedures for the naming of City property and facilities.
- It includes a provision that allows the City Council to waive any and/or all sections of this Policy at the Council's discretion.



SOUTHERN GROVE PLAT NO. 33

BEING A REPLAT OF PARCEL 30, AS SHOWN ON SOUTHERN GROVE PLAT NO. 3, RECORDED IN PLAT BOOK 61, PAGE 17
PUBLIC RECORDS OF ST. LUCIE COUNTY, FLORIDA,
LYING IN SECTIONS 26 AND 35, TOWNSHIP 37 SOUTH, RANGE 39 EAST
CITY OF PORT ST. LUCIE, ST. LUCIE COUNTY, FLORIDA



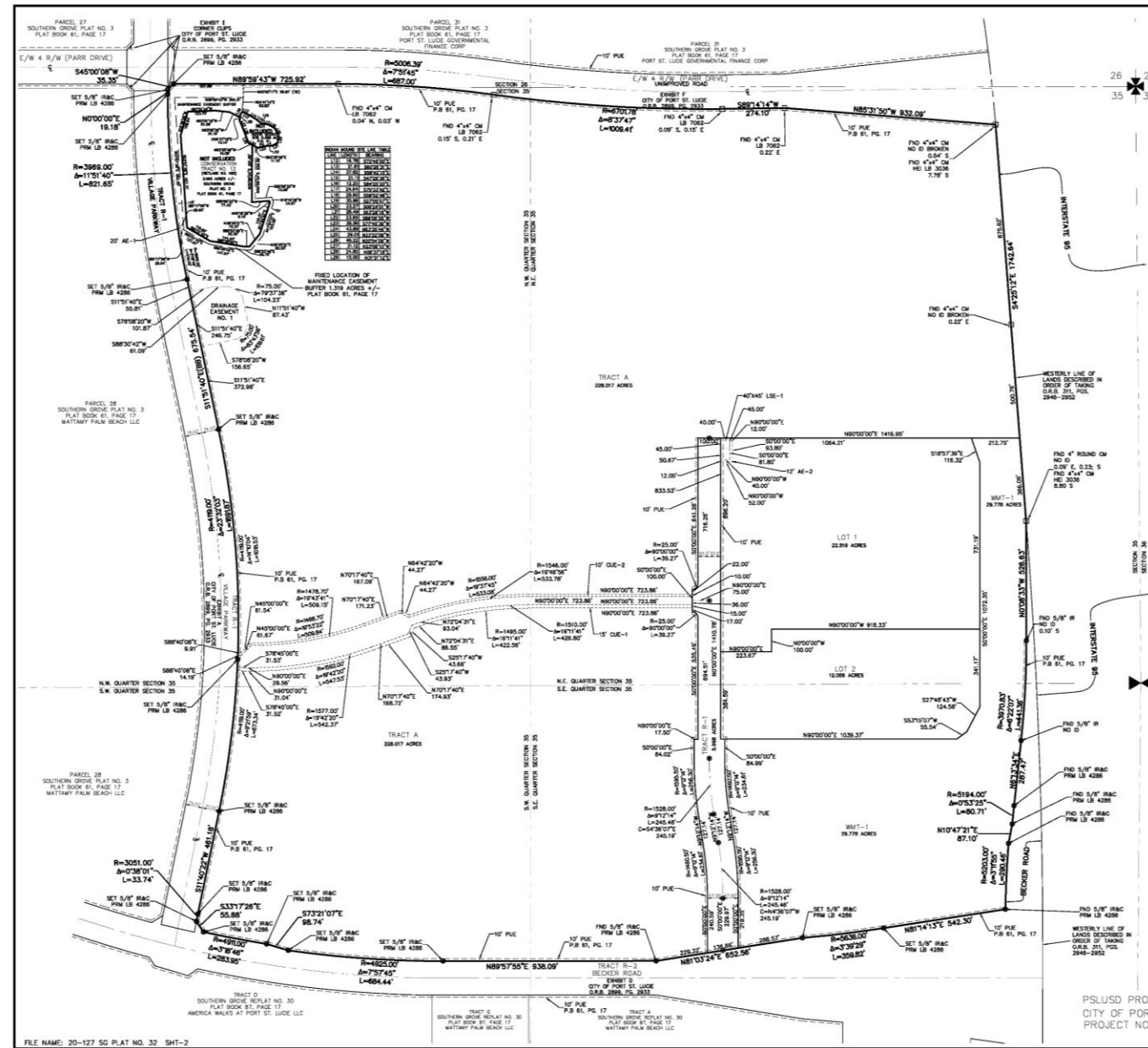
LEGEND

- ⊕ DENOTES CENTERLINE
- (P) DENOTES PLAT DATA
- (C) DENOTES CALCULATED FROM FIELD MEASUREMENTS
- PUE DENOTES PUBLIC UTILITY EASEMENT
- TYP DENOTES TYPICAL
- FND DENOTES FOUND
- LB DENOTES LICENSED BUSINESS
- AE DENOTES ACCESS EASEMENT
- UE DENOTES UTILITY EASEMENT
- PLS DENOTES PROFESSIONAL LAND SURVEYOR
- IP DENOTES IRON PIPE
- IR DENOTES IRON ROD
- CM DENOTES CONCRETE MONUMENT
- IRAC DENOTES 5/8" IRON ROD & CAP
- Δ DENOTES CENTRAL ANGLE
- R DENOTES RADIUS
- ARC DENOTES ARC LENGTH
- ONB DENOTES OFFICIAL RECORDS BOOK
- ± DENOTES PLUS OR MINUS
- N# DENOTES NUMBER
- PK&D DENOTES P.K. NAIL AND DISK
- N# ID DENOTES NO IDENTIFICATION NUMBER
- PRM DENOTES PERMANENT REFERENCE MONUMENT
- ⊙ DENOTES PARKER KALON NAIL & DISK PCP LB 4286
- PCP DENOTES PERMANENT CONTROL POINT
- PC DENOTES PAGE
- LSE DENOTES LIFT STATION EASEMENT
- P.B. DENOTES PLAT BOOK
- CUE DENOTES CITY UTILITY EASEMENT

PREPARED IN THE OFFICE OF:
CULPEPPER & TERPENING, INC.
2980 SOUTH 25th STREET
FORT PIERCE, FLORIDA 34981
CERTIFICATION NO. LB 4286

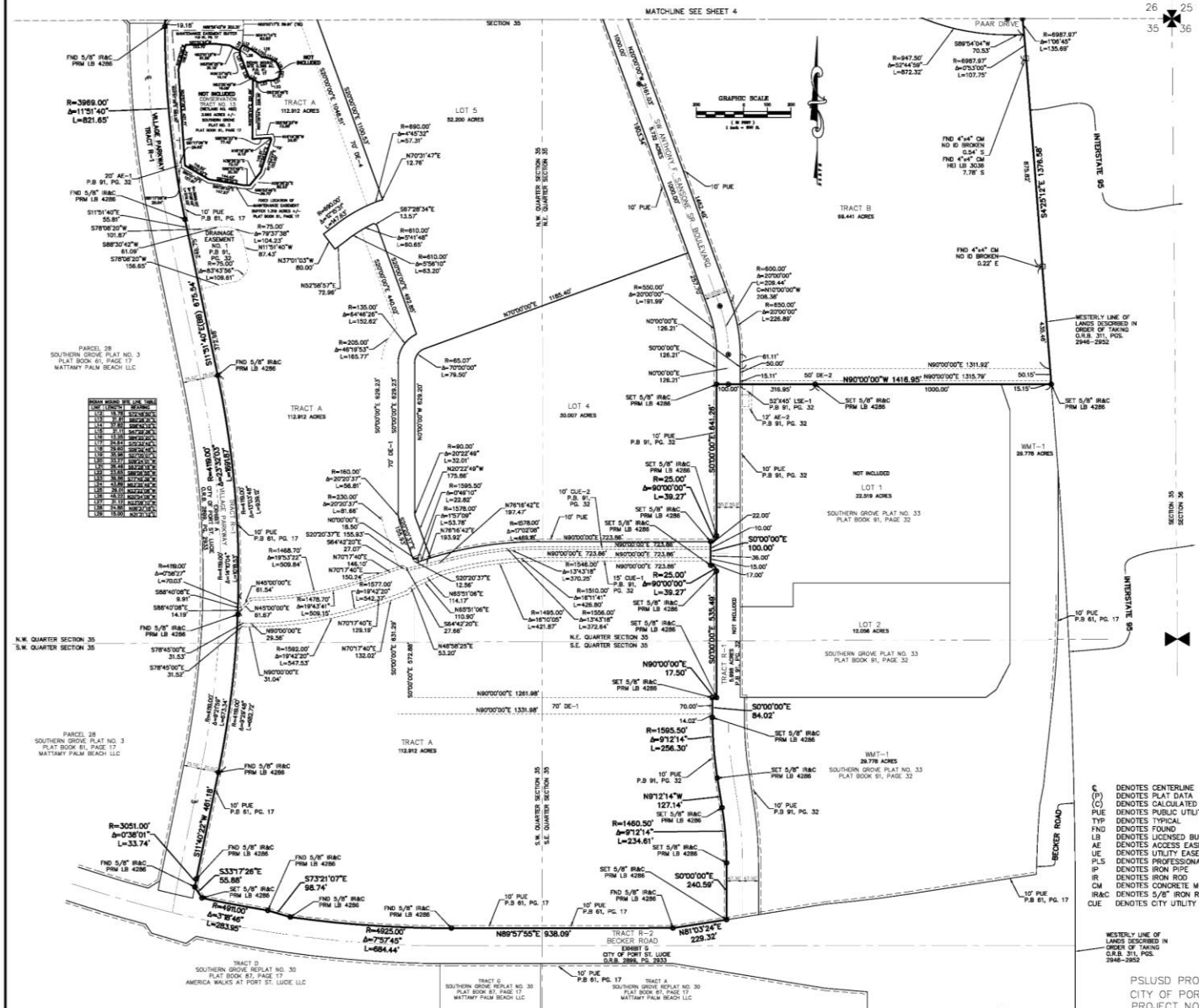
THOMAS P. KIERNAN
PROFESSIONAL SURVEYOR AND MAPPER
FLORIDA CERTIFICATE NO. 6199

PSLUSD PROJECT NO. 5360
CITY OF PORT ST. LUCIE
PROJECT NO. P20-171

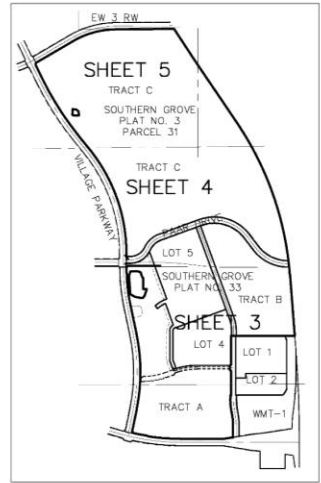


SOUTHERN GROVE PLAT NO. 35

BEING A REPLAT OF PARCEL 31, AS SHOWN ON SOUTHERN GROVE PLAT NO. 3, RECORDED IN PLAT BOOK 61, PAGE 17, AND A REPLAT OF TRACT A, AS SHOWN ON SOUTHERN GROVE PLAT NO. 33, RECORDED IN PLAT BOOK 91, PAGE 32, AND A PORTION OF PAAR DRIVE, AS RECORDED IN OFFICIAL RECORDS BOOK 2899, PAGE 2933, PUBLIC RECORDS OF ST. LUCIE COUNTY, FLORIDA, LYING IN SECTIONS 26, 27 AND 35, TOWNSHIP 37 SOUTH, RANGE 39 EAST, CITY OF PORT ST. LUCIE, ST. LUCIE COUNTY, FLORIDA



LINE NO.	BEARING	DISTANCE
1	N 115° 40' 00" E	115.40
2	S 89° 59' 00" W	115.40
3	S 89° 59' 00" W	115.40
4	N 115° 40' 00" E	115.40
5	S 89° 59' 00" W	115.40
6	N 115° 40' 00" E	115.40
7	S 89° 59' 00" W	115.40
8	N 115° 40' 00" E	115.40
9	S 89° 59' 00" W	115.40
10	N 115° 40' 00" E	115.40
11	S 89° 59' 00" W	115.40
12	N 115° 40' 00" E	115.40
13	S 89° 59' 00" W	115.40
14	N 115° 40' 00" E	115.40
15	S 89° 59' 00" W	115.40
16	N 115° 40' 00" E	115.40
17	S 89° 59' 00" W	115.40
18	N 115° 40' 00" E	115.40
19	S 89° 59' 00" W	115.40
20	N 115° 40' 00" E	115.40
21	S 89° 59' 00" W	115.40
22	N 115° 40' 00" E	115.40
23	S 89° 59' 00" W	115.40
24	N 115° 40' 00" E	115.40
25	S 89° 59' 00" W	115.40
26	N 115° 40' 00" E	115.40
27	S 89° 59' 00" W	115.40
28	N 115° 40' 00" E	115.40
29	S 89° 59' 00" W	115.40
30	N 115° 40' 00" E	115.40
31	S 89° 59' 00" W	115.40
32	N 115° 40' 00" E	115.40
33	S 89° 59' 00" W	115.40
34	N 115° 40' 00" E	115.40
35	S 89° 59' 00" W	115.40
36	N 115° 40' 00" E	115.40
37	S 89° 59' 00" W	115.40
38	N 115° 40' 00" E	115.40
39	S 89° 59' 00" W	115.40
40	N 115° 40' 00" E	115.40
41	S 89° 59' 00" W	115.40
42	N 115° 40' 00" E	115.40
43	S 89° 59' 00" W	115.40
44	N 115° 40' 00" E	115.40
45	S 89° 59' 00" W	115.40
46	N 115° 40' 00" E	115.40
47	S 89° 59' 00" W	115.40
48	N 115° 40' 00" E	115.40
49	S 89° 59' 00" W	115.40
50	N 115° 40' 00" E	115.40
51	S 89° 59' 00" W	115.40
52	N 115° 40' 00" E	115.40
53	S 89° 59' 00" W	115.40
54	N 115° 40' 00" E	115.40
55	S 89° 59' 00" W	115.40
56	N 115° 40' 00" E	115.40
57	S 89° 59' 00" W	115.40
58	N 115° 40' 00" E	115.40
59	S 89° 59' 00" W	115.40
60	N 115° 40' 00" E	115.40
61	S 89° 59' 00" W	115.40
62	N 115° 40' 00" E	115.40
63	S 89° 59' 00" W	115.40
64	N 115° 40' 00" E	115.40
65	S 89° 59' 00" W	115.40
66	N 115° 40' 00" E	115.40
67	S 89° 59' 00" W	115.40
68	N 115° 40' 00" E	115.40
69	S 89° 59' 00" W	115.40
70	N 115° 40' 00" E	115.40
71	S 89° 59' 00" W	115.40
72	N 115° 40' 00" E	115.40
73	S 89° 59' 00" W	115.40
74	N 115° 40' 00" E	115.40
75	S 89° 59' 00" W	115.40
76	N 115° 40' 00" E	115.40
77	S 89° 59' 00" W	115.40
78	N 115° 40' 00" E	115.40
79	S 89° 59' 00" W	115.40
80	N 115° 40' 00" E	115.40
81	S 89° 59' 00" W	115.40
82	N 115° 40' 00" E	115.40
83	S 89° 59' 00" W	115.40
84	N 115° 40' 00" E	115.40
85	S 89° 59' 00" W	115.40
86	N 115° 40' 00" E	115.40
87	S 89° 59' 00" W	115.40
88	N 115° 40' 00" E	115.40
89	S 89° 59' 00" W	115.40
90	N 115° 40' 00" E	115.40
91	S 89° 59' 00" W	115.40
92	N 115° 40' 00" E	115.40
93	S 89° 59' 00" W	115.40
94	N 115° 40' 00" E	115.40
95	S 89° 59' 00" W	115.40
96	N 115° 40' 00" E	115.40
97	S 89° 59' 00" W	115.40
98	N 115° 40' 00" E	115.40
99	S 89° 59' 00" W	115.40
100	N 115° 40' 00" E	115.40



- LEGEND**
- C DENOTES CENTERLINE
 - (P) DENOTES PLAT DATA
 - (C) DENOTES CALCULATED FROM FIELD MEASUREMENTS
 - PUE DENOTES PUBLIC UTILITY EASEMENT
 - TYP DENOTES TYPICAL
 - FND DENOTES FOUND
 - LB DENOTES LICENSED BUSINESS
 - AE DENOTES ACCESS EASEMENT
 - UE DENOTES UTILITY EASEMENT
 - PLS DENOTES PROFESSIONAL LAND SURVEYOR
 - IP DENOTES IRON PIPE
 - IR DENOTES IRON ROD
 - CM DENOTES CONCRETE MONUMENT
 - IRAC DENOTES 5/8" IRON ROD & CAP
 - CUE DENOTES CITY UTILITY EASEMENT
- KEY MAP**
- NOT TO SCALE
- Δ DENOTES CENTRAL ANGLE
 - R DENOTES RADIUS
 - L DENOTES ARC LENGTH
 - ORB DENOTES OFFICIAL RECORDS BOOK
 - ± DENOTES PLUS OR MINUS
 - No. DENOTES NUMBER
 - PK DENOTES P.K. NAIL AND DISK
 - No ID DENOTES NO IDENTIFICATION NUMBER
 - PRM DENOTES PERMANENT REFERENCE MONUMENT
 - ⊙ DENOTES PARKER KALON NAIL & DISK POP LB 4288
 - ⊙ DENOTES PERMANENT CONTROL POINT
 - PG DENOTES PAGE
 - LSE DENOTES LIFT STATION EASEMENT
 - P.B. DENOTES PLAT BOOK

PREPARED IN THE OFFICE OF:
CULPEPPER & TERPENING, INC.
 2980 SOUTH 25TH STREET
 FORT PIERCE, FLORIDA 34981
 CERTIFICATION NO. LB 4286

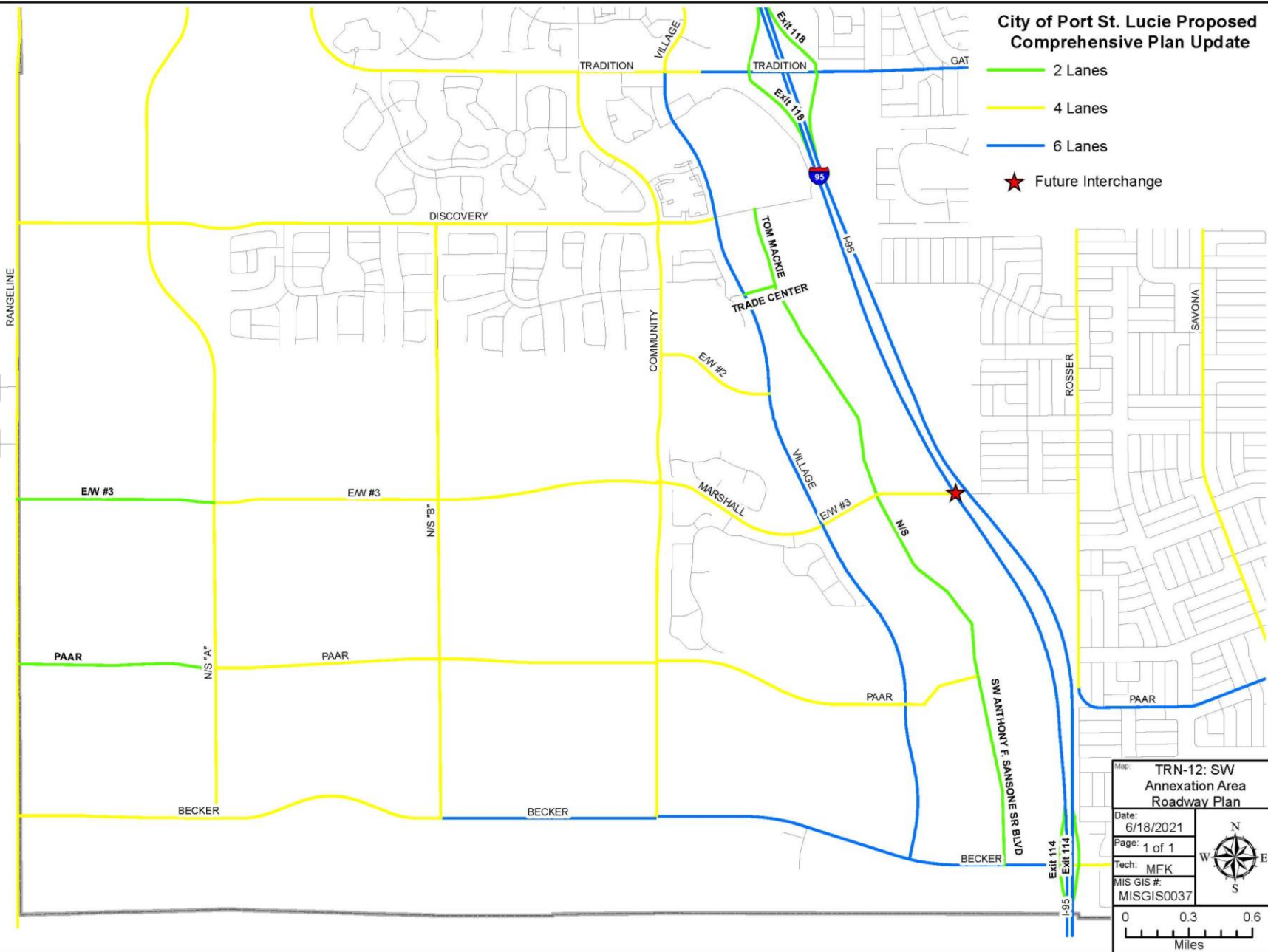
THOMAS P. KIERNAN
 PROFESSIONAL SURVEYOR AND MAPPER
 FLORIDA CERTIFICATE NO. 6199

PLSUSD PROJECT NO. 5360C
 CITY OF PORT ST. LUCIE
 PROJECT NO. P21-059



City of Port St. Lucie Proposed Comprehensive Plan Update

- 2 Lanes
- 4 Lanes
- 6 Lanes
- ★ Future Interchange



Map: TRN-12: SW Annexation Area Roadway Plan	
Date: 6/18/2021	
Page: 1 of 1	
Tech: MFK	
MIS GIS #: MISGIS0037	



Recommendation

- Recommend Council waive City Council Directed Policy # 19-04ccd and designate Tract R-1, Southern Grove Plat No. 33 , as SW Anthony F. Sansone Sr. Boulevard.

