

LEGEND

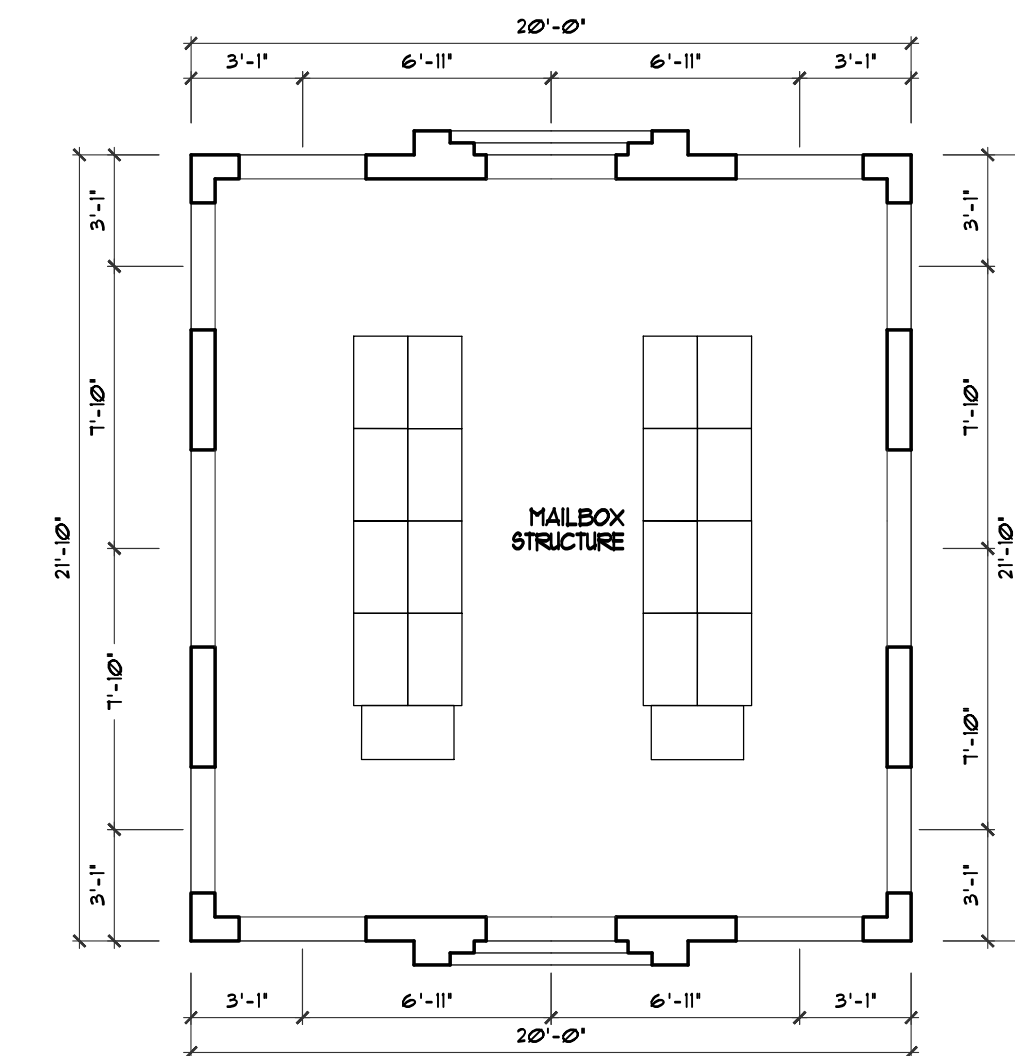
- A ARCHITECTURAL GRADE ASPHALT SHINGLE TILE ROOF
30 YEAR / 320 LB MIN.
DRIFTWOOD BROWN OR EQUIVALENT
- B 2X8 SMOOTH FINISH WOOD FASCIA
COLOR: SW 1024 FUNCTIONAL GRAY
- C IMPACT RESISTANT ENTRY DOOR
COLOR: SW 1024 FUNCTIONAL GRAY
- D STUCCO APPLICATION (COLOR SCHEME 1)
COLOR: SW 1011 ORIGINAL WHITE
- E STUCCO APPLICATION (COLOR SCHEME 2)
COLOR: SW 6071 POPULAR GRAY
- F STUCCO APPLICATION (COLOR SCHEME 3)
COLOR: SW 1008 ALABASTER
- G STUCCO APPLICATION
COLOR: SW 6752 ICE CUBE
- H 1" STUCCO REVEAL # 16" (COLOR SCHEME 1)
COLOR: SW 6760 UNQUE GRAY
- I 1" STUCCO REVEAL # 16" (COLOR SCHEME 2)
COLOR: SW 6073 PERFECT GREIGE
- J 1" STUCCO REVEAL # 6" (COLOR SCHEME 3)
COLOR: SW 1050 USEFUL GRAY

ARCHITECTURAL ELEMENTS

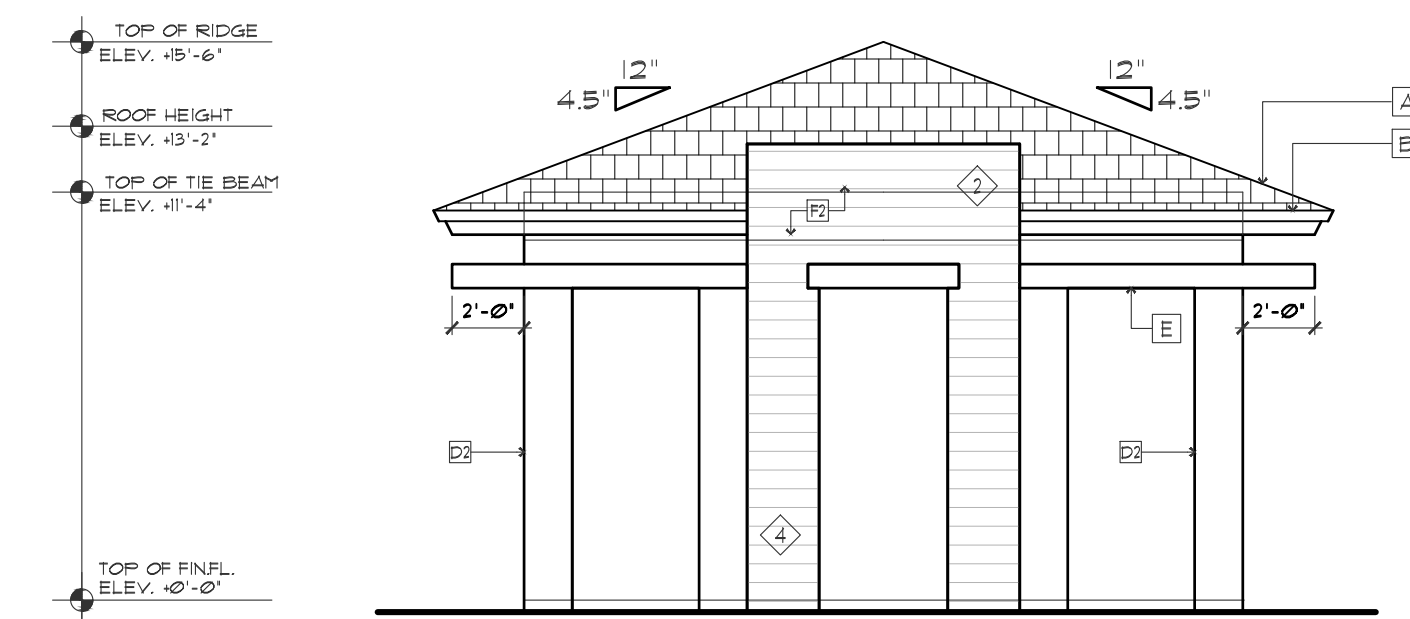
- ◇ PREDOMINANTLY VERTICAL, RECTANGULAR WINDOWS.
- ◇ STRONG VERTICAL ELEMENT, MIN 2:1 HEIGHT/WIDTH.
- ◇ PORCH / PORTICO
- ◇ EXPRESSION LINES, MIN 1/2" WIDE AND DEEP.

NOTE

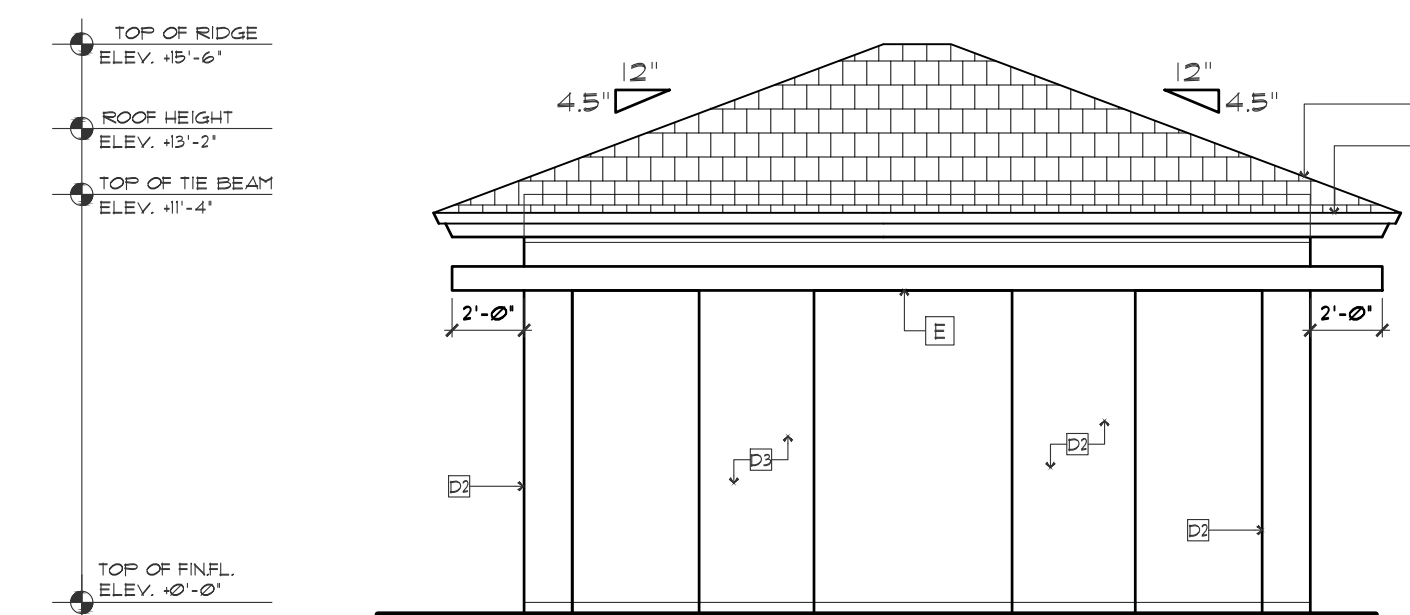
ANY CHANGES TO THE BUILDING DESIGN OR COLOR MUST BE MADE IN COMPLIANCE WITH THE CITYWIDE DESIGN STANDARDS.



MAIL KIOSK
FLOOR PLAN
SCALE 3/16" = 1'-0"



MAIL KIOSK
FRONT & REAR ELEVATION
SCALE 3/16" = 1'-0"



MAIL KIOSK
SIDE ELEVATIONS
SCALE 3/16" = 1'-0"

LEGEND

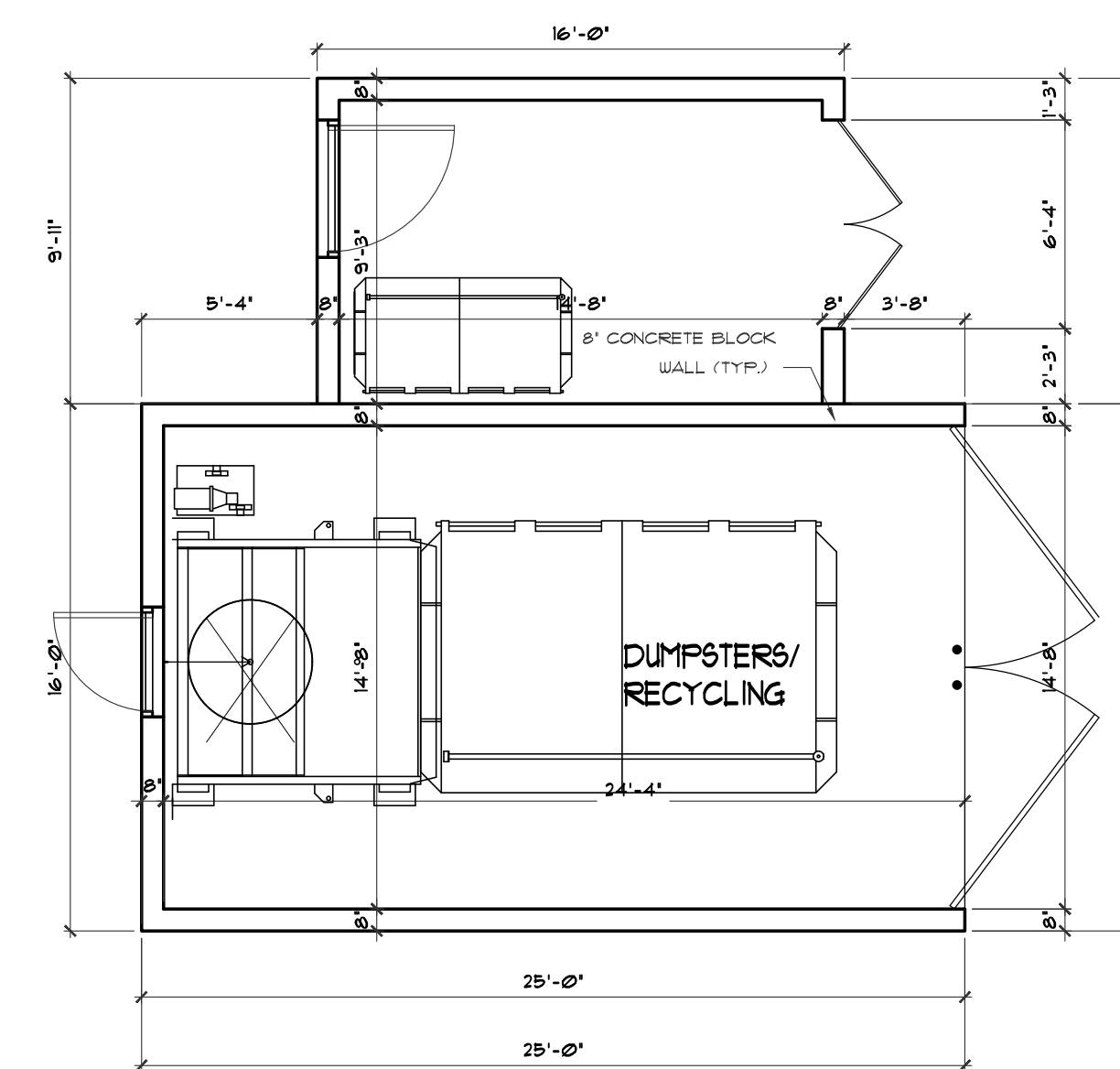
- A ARCHITECTURAL GRADE ASPHALT SHINGLE TILE ROOF
30 YEAR / 350 LB MIN.
DRIFTWOOD BROWN OR EQUIVALENT
- B 2X8 SMOOTH FINISH WOOD FASCIA
COLOR: SUI 1014 FUNCTIONAL GRAY
- C IMPACT RESISTANT ENTRY DOOR
COLOR: SUI 1014 FUNCTIONAL GRAY
- D STUCCO APPLICATION (COLOR SCHEME 1)
COLOR: SUI 1011 ORIGINAL WHITE
- E STUCCO APPLICATION (COLOR SCHEME 2)
COLOR: SUI 6071 POPULAR GRAY
- F STUCCO APPLICATION (COLOR SCHEME 3)
COLOR: SUI 1008 ALABASTER
- G STUCCO APPLICATION
COLOR: SUI 6257 ICE CUBE
- H 1" STUCCO REVEAL @ 16" (COLOR SCHEME 1)
COLOR: SUI 6260 UNIQUE GRAY
- I 1" STUCCO REVEAL @ 16" (COLOR SCHEME 2)
COLOR: SUI 6013 PERFECT GREIGE
- J 1" STUCCO REVEAL @ 16" (COLOR SCHEME 3)
COLOR: SUI 1050 USEFUL GRAY

ARCHITECTURAL ELEMENTS

- 1 PREDOMINANTLY VERTICAL, RECTANGULAR WINDOWS.
- 2 STRONG VERTICAL ELEMENT, MIN. 2:1 HEIGHT:WIDTH.
- 3 PORCH / PORTICO
- 4 EXPRESSION LINES, MIN 1/2" WIDE AND DEEP.

NOTE

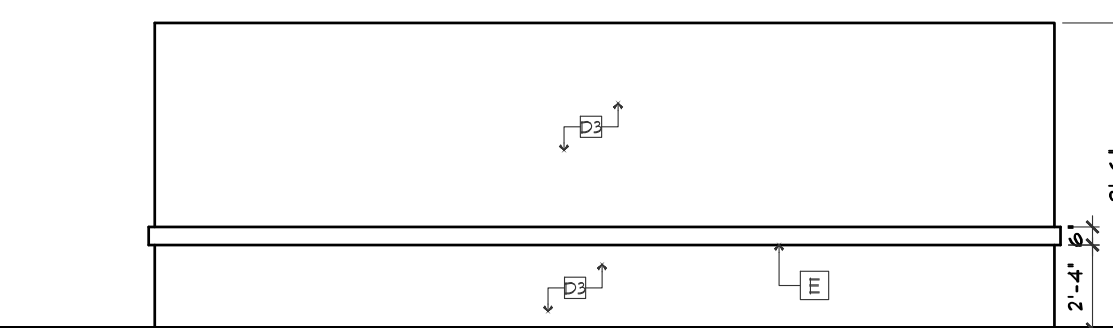
ANY CHANGES TO THE BUILDING DESIGN OR COLOR MUST BE MADE IN COMPLIANCE WITH THE CITYWIDE DESIGN STANDARDS.



FLOOR PLAN

DUMPSTER

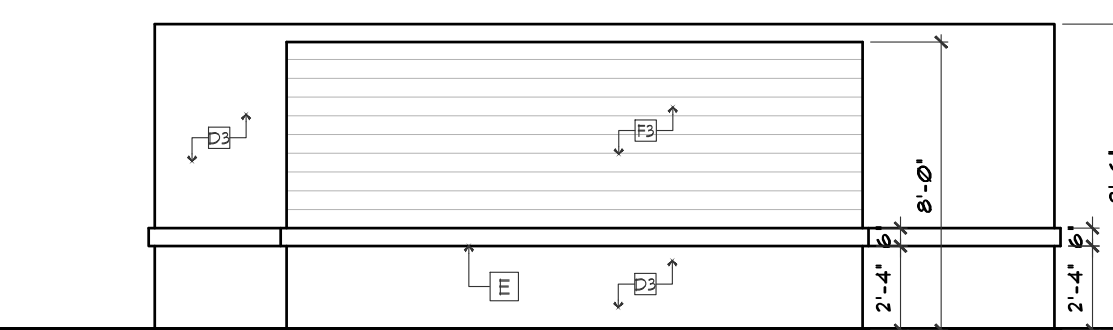
SCALE 3/16" = 1'-0"



LEFT SIDE ELEVATION

DUMPSTER

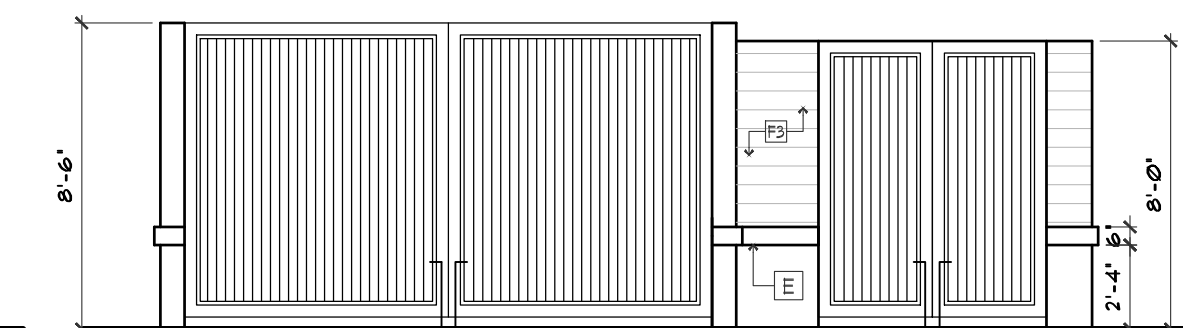
SCALE 3/16" = 1'-0"



RIGHT SIDE ELEVATION

DUMPSTER

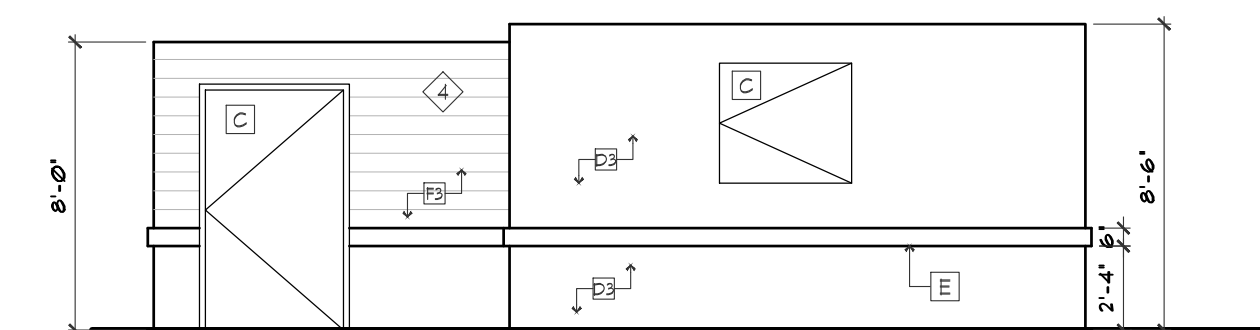
SCALE 3/16" = 1'-0"



FRONT ELEVATION

DUMPSTER

SCALE 3/16" = 1'-0"



REAR ELEVATION

DUMPSTER

SCALE 3/16" = 1'-0"

LEGEND

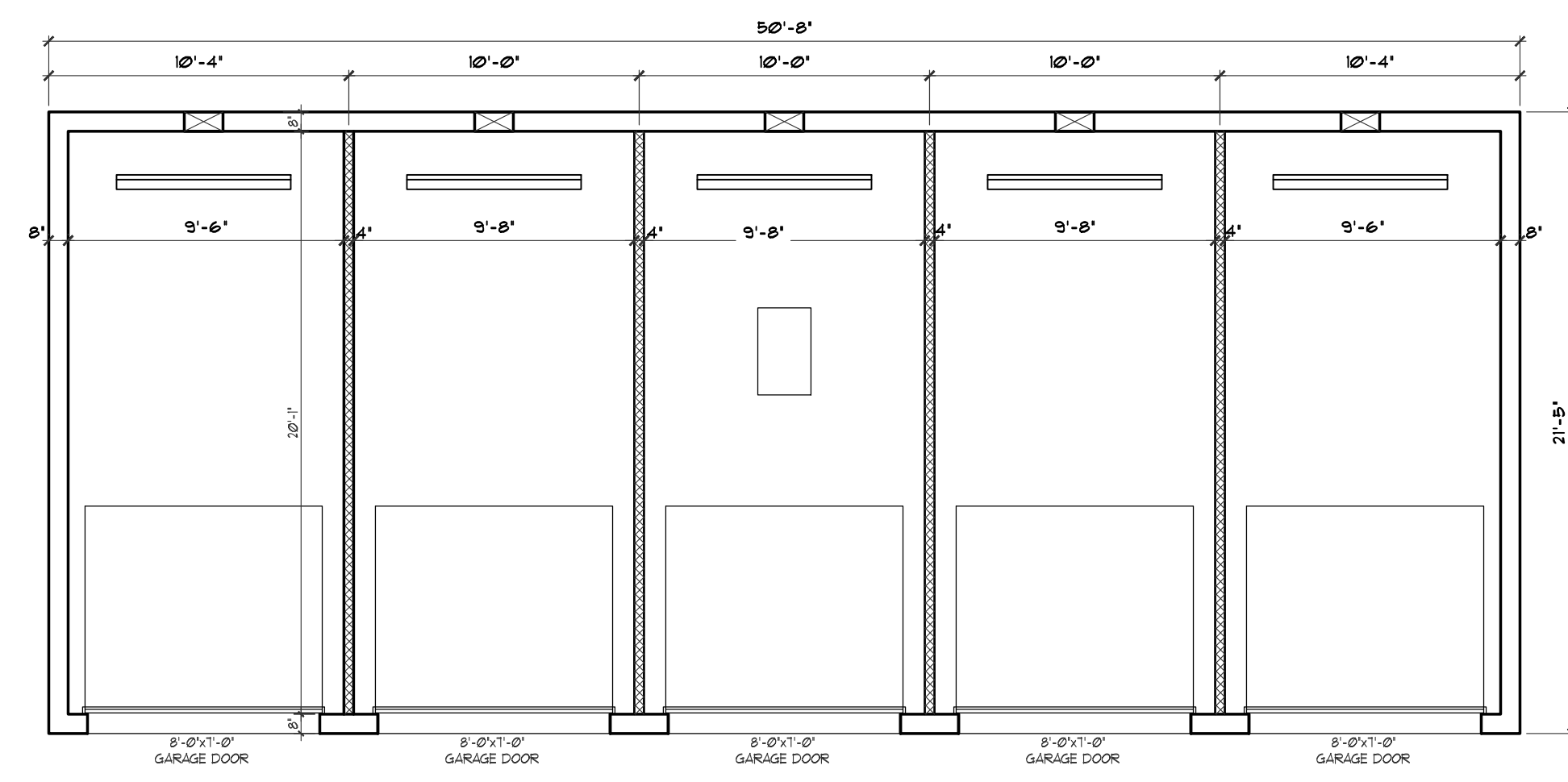
- A ARCHITECTURAL GRADE ASPHALT SHINGLE TILE ROOF 30 YEAR / 320 LB MIN. DRIFTWOOD BROWN OR EQUIVALENT
- B 2X8 SMOOTH FINISH WOOD FASCIA COLOR: BU 1024 FUNCTIONAL GRAY
- C IMPACT RESISTANT ENTRY DOOR COLOR: BU 1024 FUNCTIONAL GRAY
- D STUCCO APPLICATION (COLOR SCHEME 1) COLOR: BU 1011 ORIGINAL WHITE
- E STUCCO APPLICATION (COLOR SCHEME 2) COLOR: BU 6071 POPULAR GRAY
- F STUCCO APPLICATION (COLOR SCHEME 3) COLOR: BU 1009 ALABASTER
- G STUCCO APPLICATION COLOR: BU 6752 ICE CUBE
- H 1" STUCCO REVEAL # 16" (COLOR SCHEME 1) COLOR: BU 6360 JUNGLE GRAY
- I 1" STUCCO REVEAL # 16" (COLOR SCHEME 2) COLOR: BU 6073 PERFECT GREIGE
- J 1" STUCCO REVEAL # 6" (COLOR SCHEME 3) COLOR: BU 1050 USEFUL GRAY

ARCHITECTURAL ELEMENTS

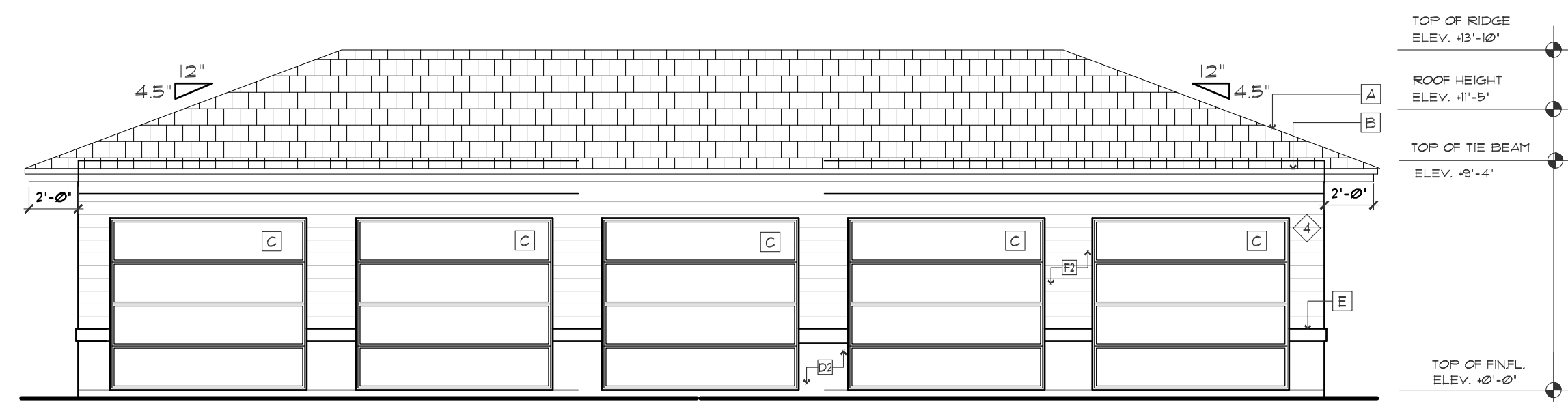
- ◇ PREDOMINANTLY VERTICAL, RECTANGULAR WINDOWS.
- ◇ STRONG VERTICAL ELEMENT, MIN. 2:1 HEIGHT/WIDTH.
- ◇ PORCH / PORTICO
- ◇ EXPRESSION LINES, MIN 1/2" WIDE AND DEEP.

NOTE

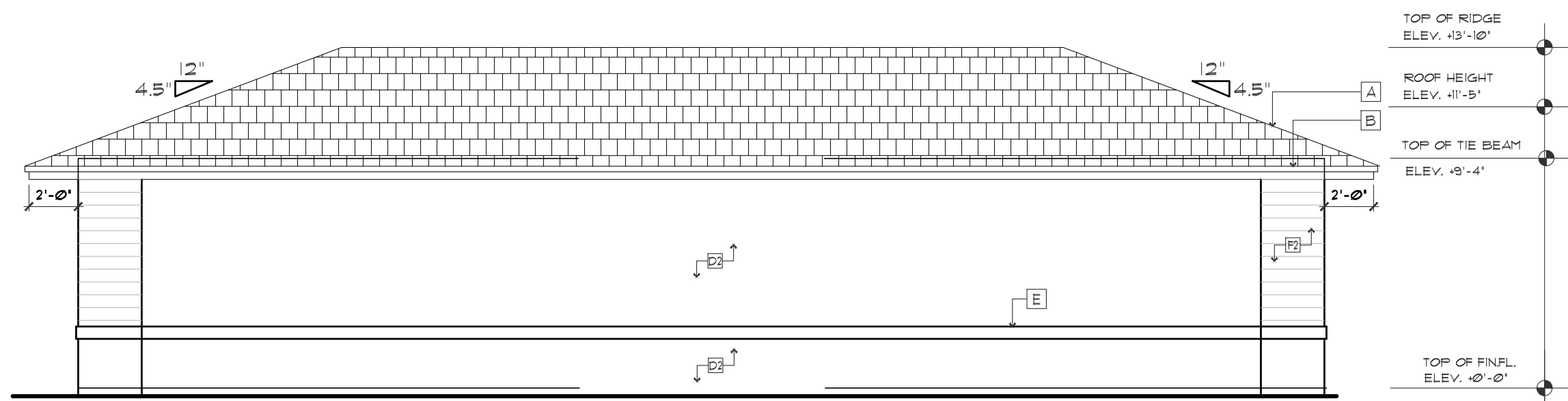
ANY CHANGES TO THE BUILDING DESIGN OR COLOR MUST BE MADE IN COMPLIANCE WITH THE CITYWIDE DESIGN STANDARDS.



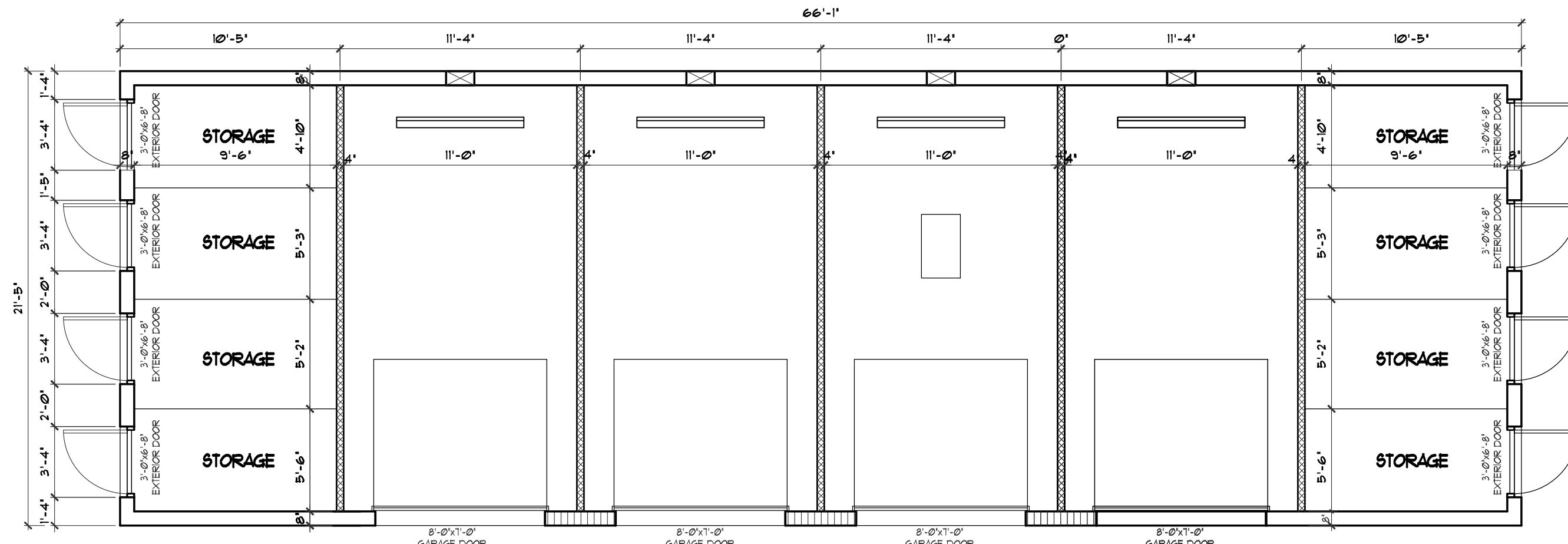
FLOOR PLAN
 BUILDING TYPE I (5-1-CAR GARAGE) SCALE 3/16" = 1'-0"



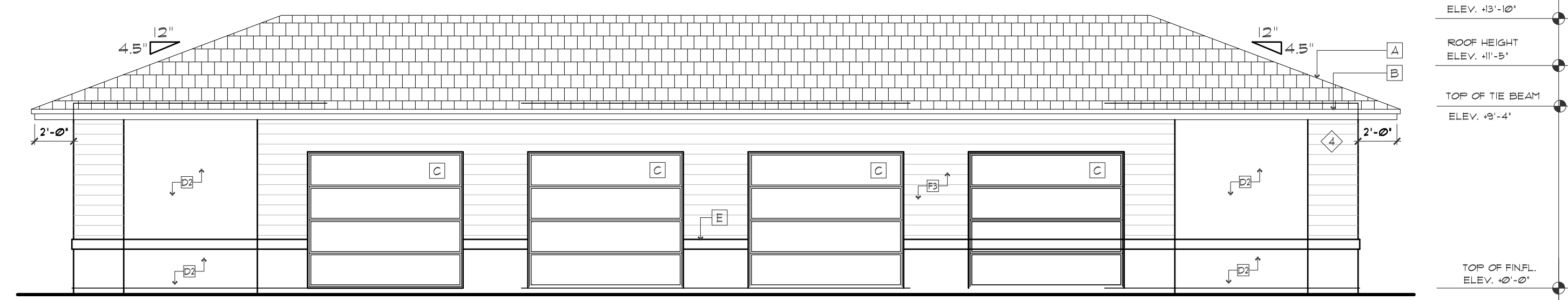
FRONT ELEVATION
 BUILDING TYPE I (5-1-CAR GARAGE) SCALE 3/16" = 1'-0"



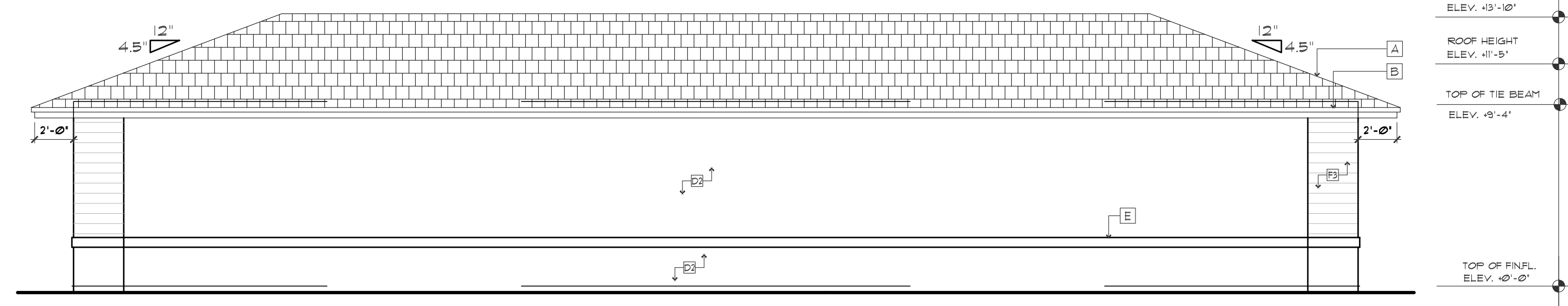
REAR ELEVATION
 BUILDING TYPE I (5-1-CAR GARAGE) SCALE 3/16" = 1'-0"



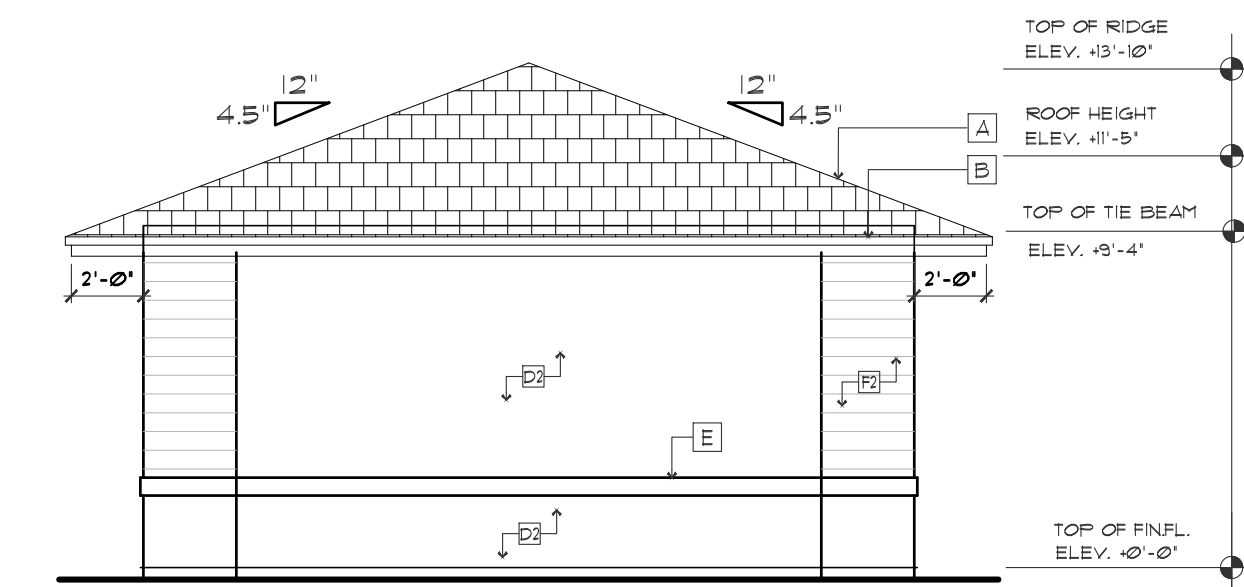
FLOOR PLAN
 BUILDING TYPE II (5-1-CAR GARAGE & STORAGE SPACES)-0"



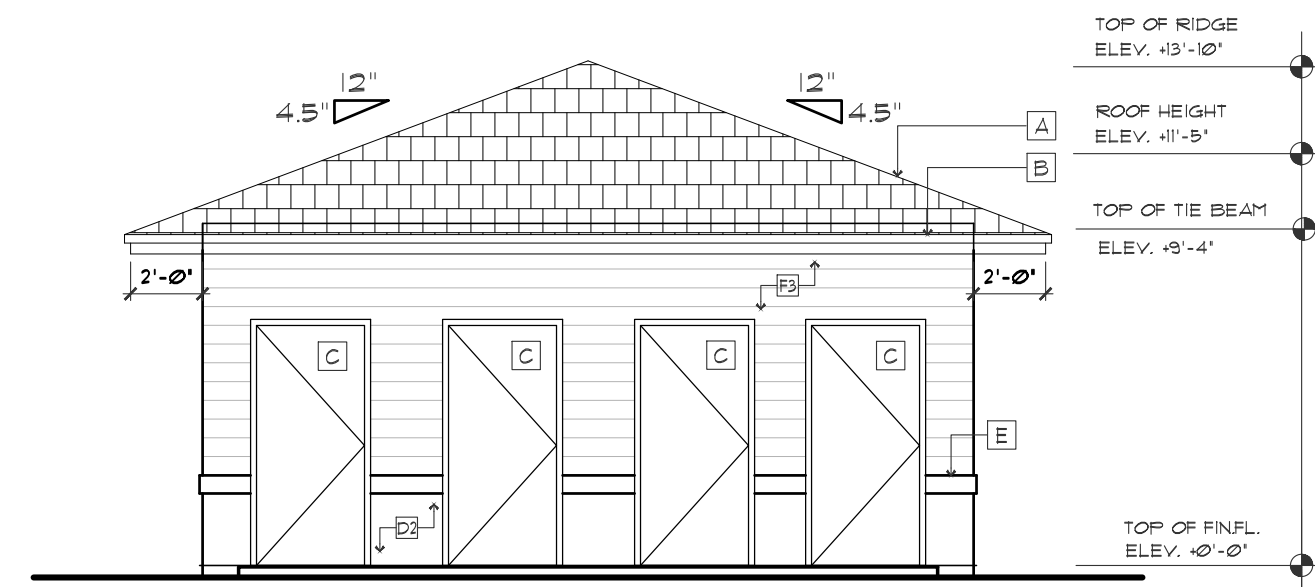
FRONT ELEVATION
 BUILDING TYPE II (5-1-CAR GARAGE & STORAGE SPACES) SCALE 3/16" = 1'-0"



REAR ELEVATION
 BUILDING TYPE II (5-1-CAR GARAGE & STORAGE SPACES) SCALE 3/16" = 1'-0"



SIDE ELEVATION
 BUILDING TYPE I (5-1-CAR GARAGE) SCALE 3/16" = 1'-0"



SIDE ELEVATION
 BUILDING TYPE II (5-1-CAR GARAGE & STORAGE SPACES) SCALE 3/16" = 1'-0"

LEGEND

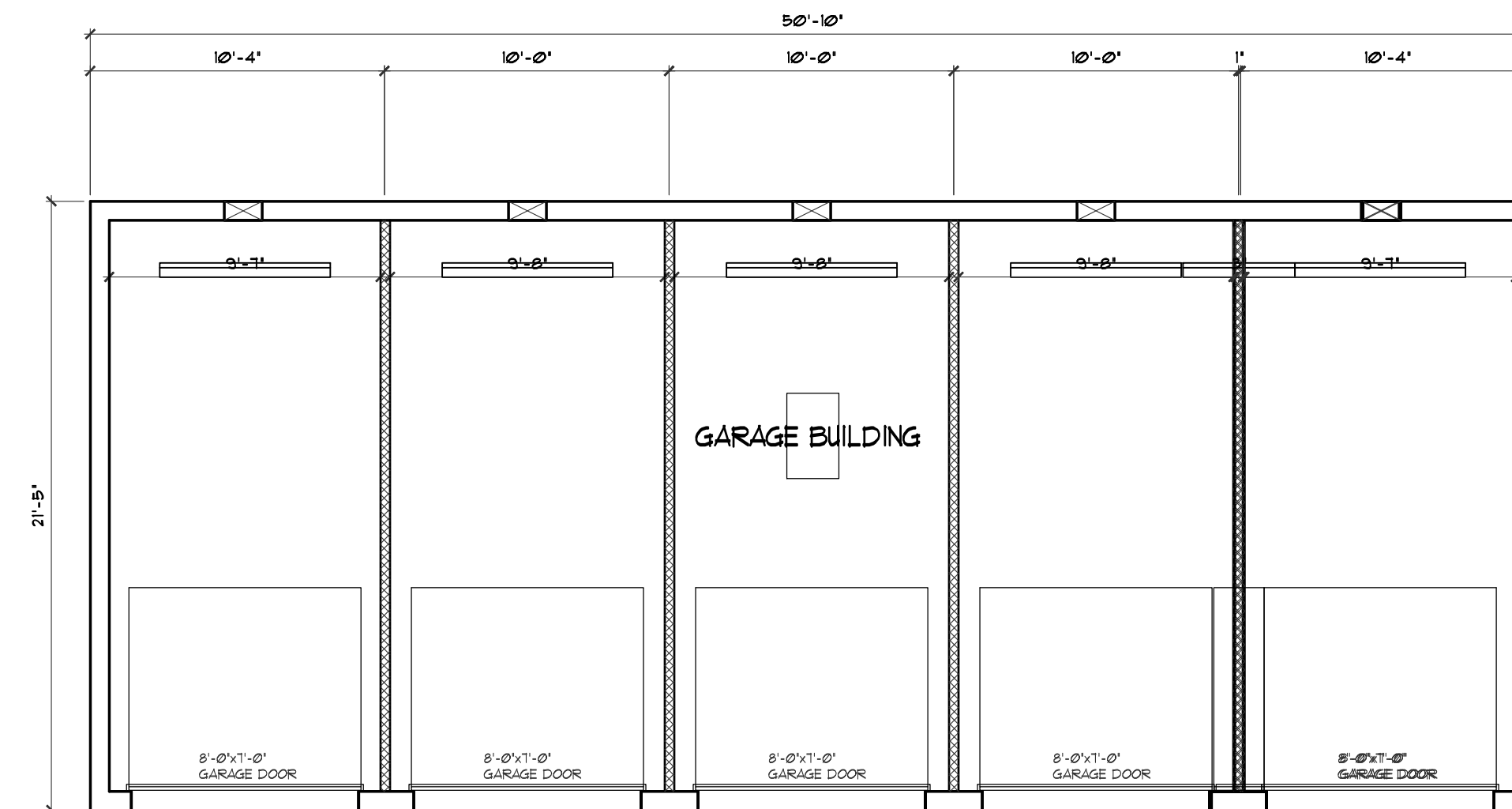
- A ARCHITECTURAL GRADE ASPHALT SHINGLE TILE ROOF
30 YEAR / 330 LB MIN
DRIFTWOOD BROWN OR EQUIVALENT
- B 2X8 SMOOTH FINISH WOOD FASCIA
COLOR: SU 7024 FUNCTIONAL GRAY
- C IMPACT RESISTANT ENTRY DOOR
COLOR: SU 7024 FUNCTIONAL GRAY
- D STUCCO APPLICATION (COLOR SCHEME 1)
COLOR: SU 7071 ORIGINAL WHITE
- E STUCCO APPLICATION (COLOR SCHEME 2)
COLOR: SU 6071 POPULAR GRAY
- F STUCCO APPLICATION (COLOR SCHEME 3)
COLOR: SU 7008 ALABASTER
- G STUCCO APPLICATION
COLOR: SU 6252 ICE CUBE
- H 1" STUCCO REVEAL @ 16" (COLOR SCHEME 1)
COLOR: SU 6160 UNIQUE GRAY
- I 1" STUCCO REVEAL @ 16" (COLOR SCHEME 2)
COLOR: SU 6073 PERFECT GREIGE
- J 1" STUCCO REVEAL @ 6" (COLOR SCHEME 3)
COLOR: SU 7050 USEFUL GRAY

ARCHITECTURAL ELEMENTS

- ◇ PREDOMINANTLY VERTICAL RECTANGULAR WINDOWS.
- ◇ STRONG VERTICAL ELEMENT, MIN 2:1 HEIGHT/WIDTH.
- ◇ PORCH / PORTICO
- ◇ EXPRESSION LINES, MIN 1/2" WIDE AND DEEP.

NOTE

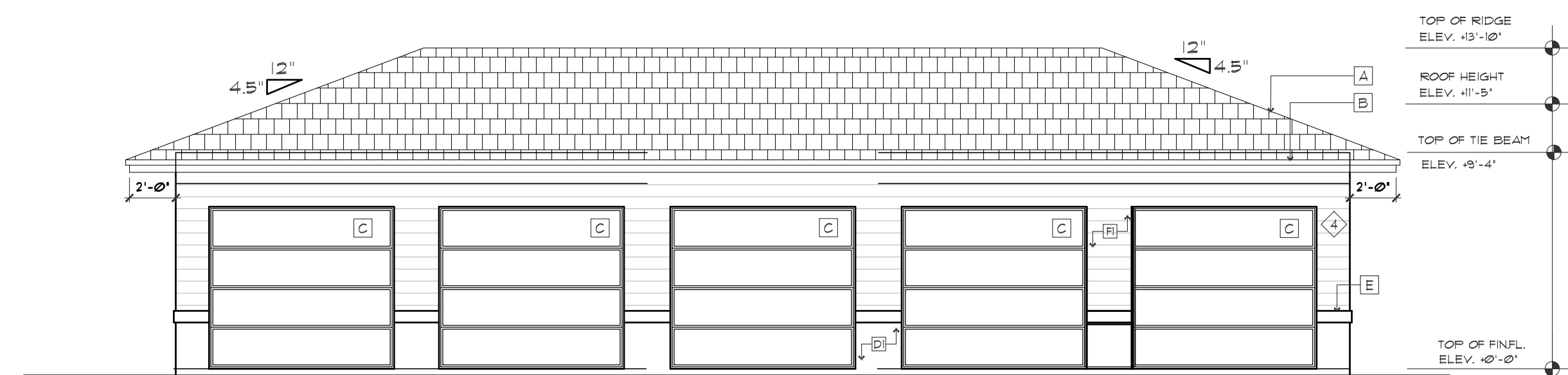
ANY CHANGES TO THE BUILDING DESIGN OR COLOR MUST BE MADE IN COMPLIANCE WITH THE CITYWIDE DESIGN STANDARDS.



FLOOR PLAN

BUILDING TYPE IV (6-1 CAR GARAGE)

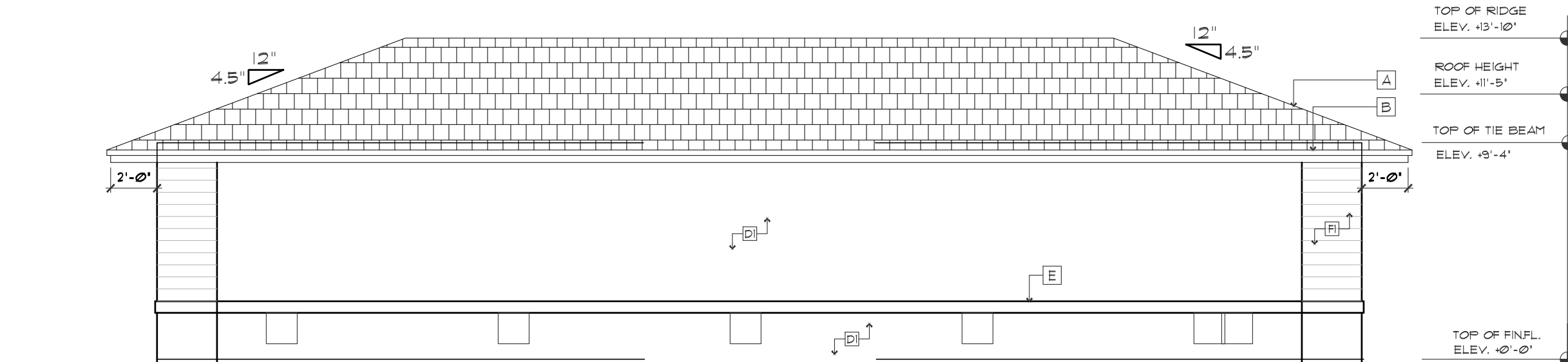
SCALE 3/16" = 1'-0"



FRONT ELEVATION

BUILDING TYPE IV (6-1 CAR GARAGE)

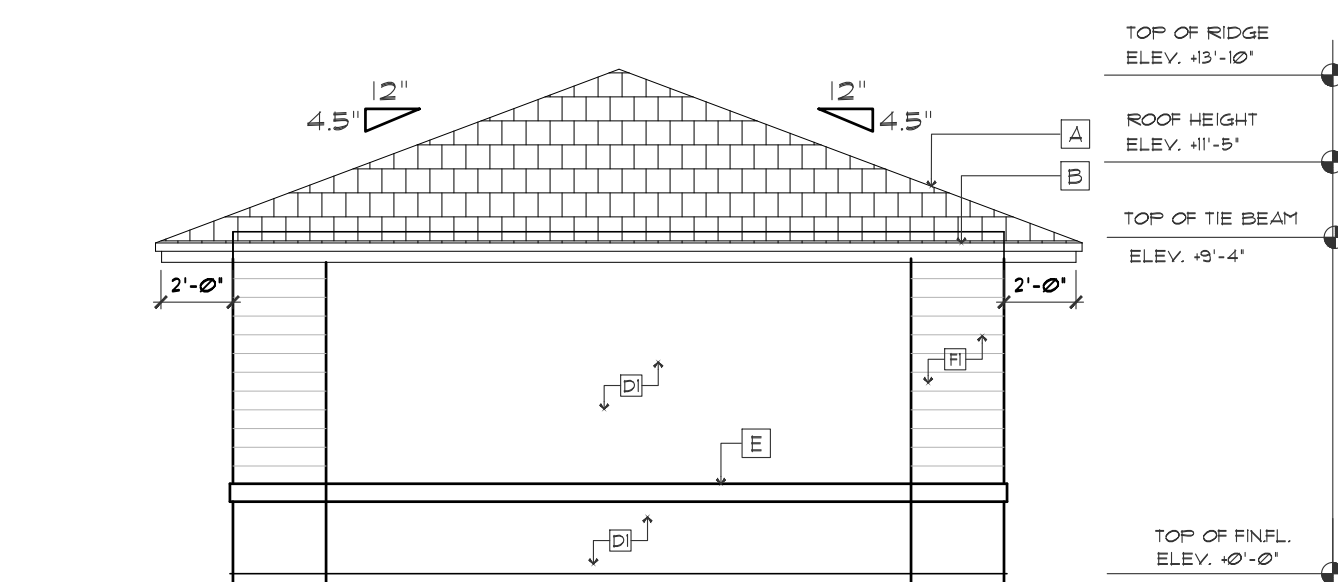
SCALE 3/16" = 1'-0"



REAR ELEVATION

BUILDING TYPE IV (6-1 CAR GARAGE)

SCALE 3/16" = 1'-0"



SIDE ELEVATION

BUILDING TYPE IV (6-1 CAR GARAGE)

SCALE 3/16" = 1'-0"

LEGEND

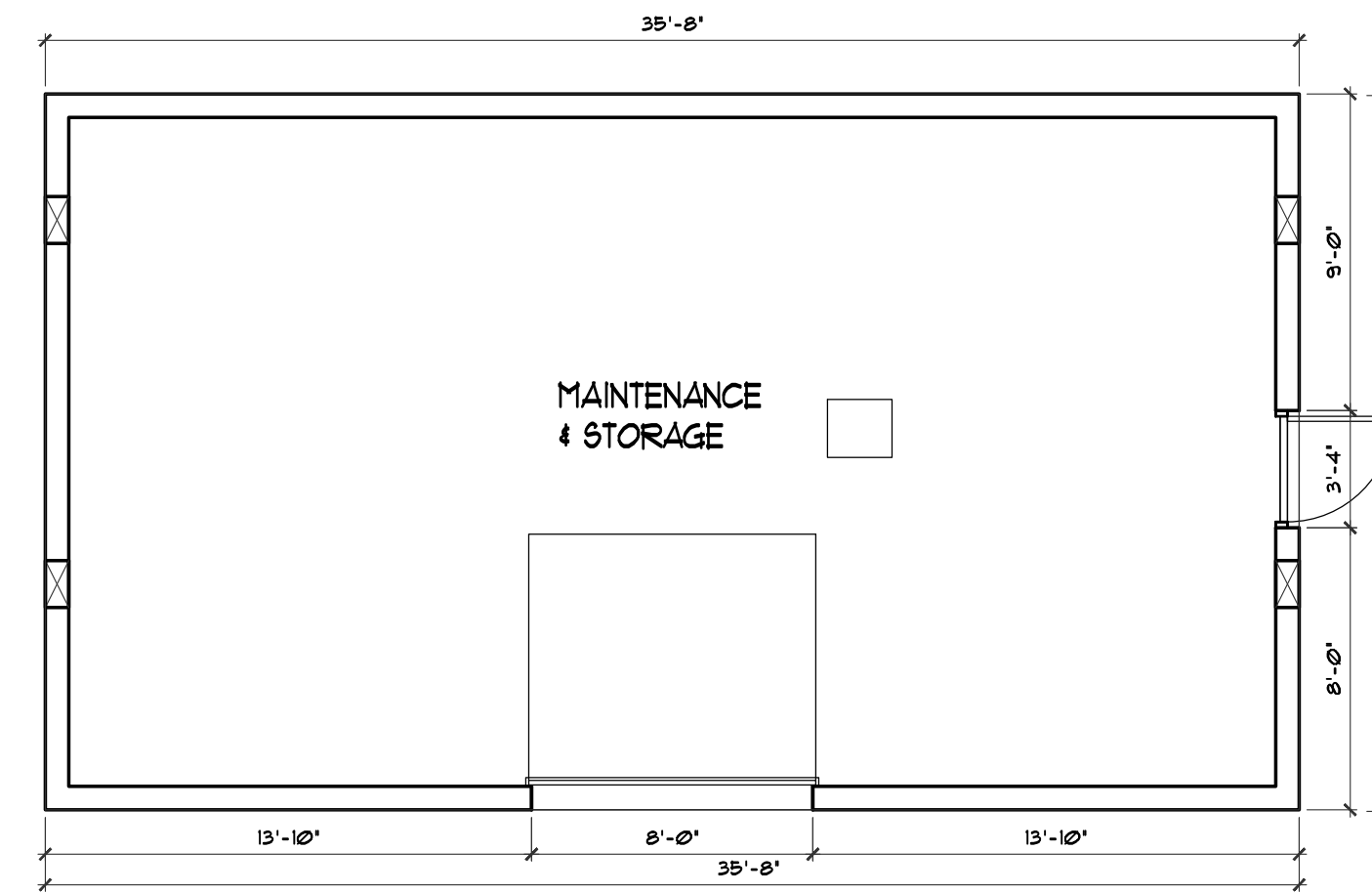
- A ARCHITECTURAL GRADE ASPHALT SHINGLE TILE ROOF
30 YEAR / 320 LB MIN.
DRIFTWOOD BROWN OR EQUIVALENT
- B 2X8 SMOOTH FINISH WOOD FASCIA
COLOR: SU 1024 FUNCTIONAL GRAY
- C IMPACT RESISTANT ENTRY DOOR
COLOR: SU 1024 FUNCTIONAL GRAY
- D STUCCO APPLICATION (COLOR SCHEME 1)
COLOR: SU 1011 ORIGINAL WHITE
- D2 STUCCO APPLICATION (COLOR SCHEME 2)
COLOR: SU 6011 POPULAR GRAY
- D3 STUCCO APPLICATION (COLOR SCHEME 3)
COLOR: SU 1008 ALABASTER
- E STUCCO APPLICATION
COLOR: SU 6251 ICE CUBE
- F1 1" STUCCO REVEAL # 16" (COLOR SCHEME 1)
COLOR: SU 6260 UNIQUE GRAY
- F2 1" STUCCO REVEAL # 16" (COLOR SCHEME 2)
COLOR: SU 6013 PERFECT GREIGE
- F3 1" STUCCO REVEAL # 6" (COLOR SCHEME 3)
COLOR: SU 1050 USEFUL GRAY

ARCHITECTURAL ELEMENTS

- ◇ PREDOMINANTLY VERTICAL RECTANGULAR WINDOWS.
- ◇ STRONG VERTICAL ELEMENT, MIN. 2:1 HEIGHT/WIDTH.
- ◇ PORCH / PORTICO
- ◇ EXPRESSION LINES MIN 1/2" WIDE AND DEEP.

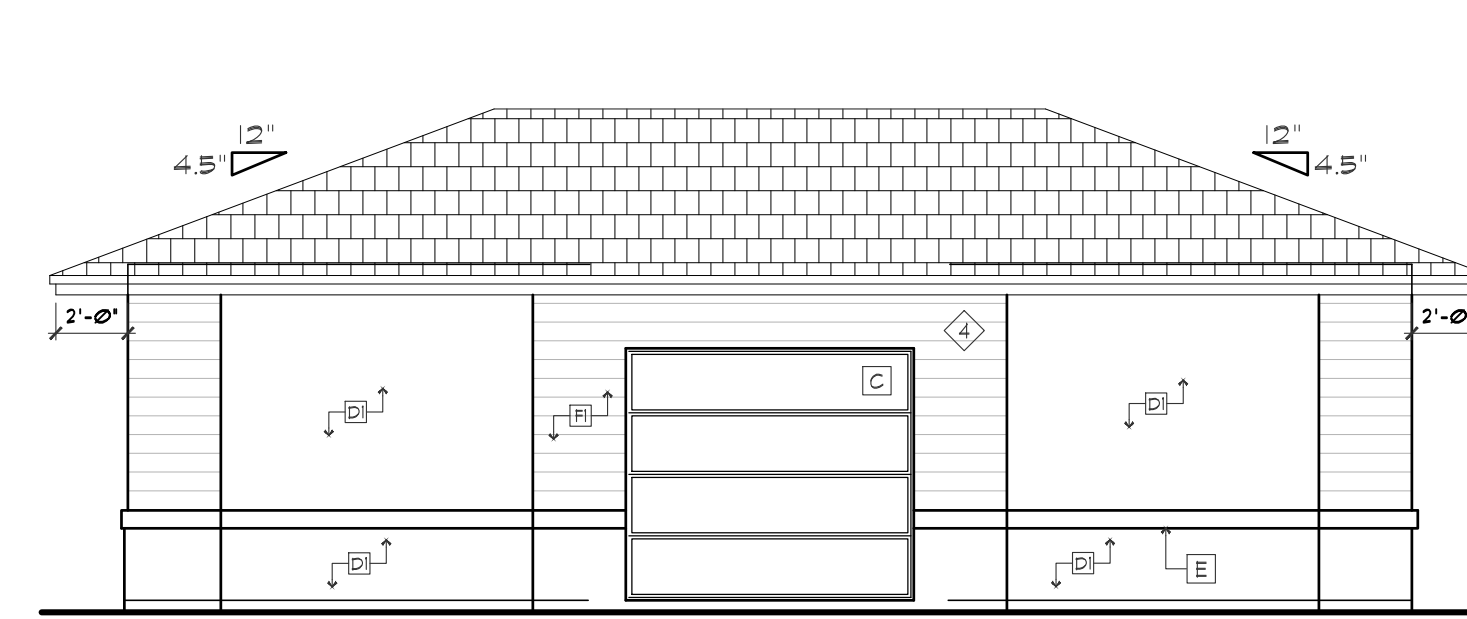
NOTE

ANY CHANGES TO THE BUILDING DESIGN OR COLOR MUST BE MADE IN COMPLIANCE WITH THE CITYWIDE DESIGN STANDARDS.



FLOOR PLAN

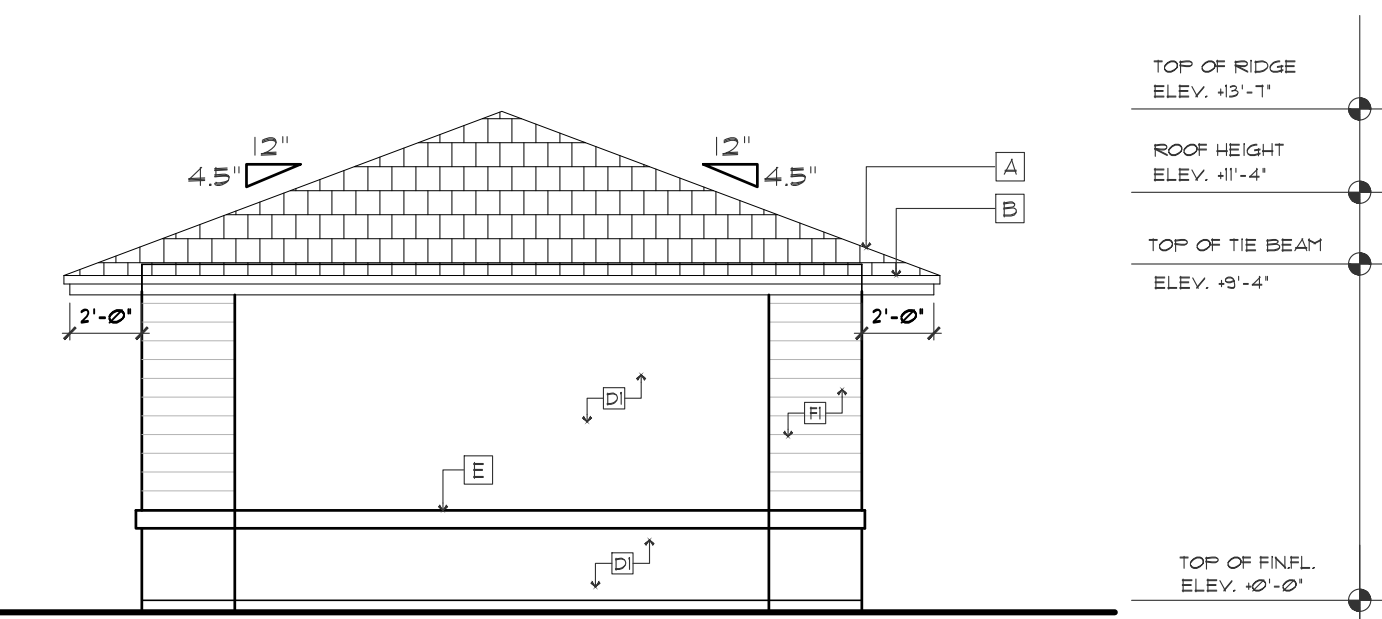
SCALE 3/16" = 1'-0"



FRONT ELEVATION

MAINTENANCE BLDG.

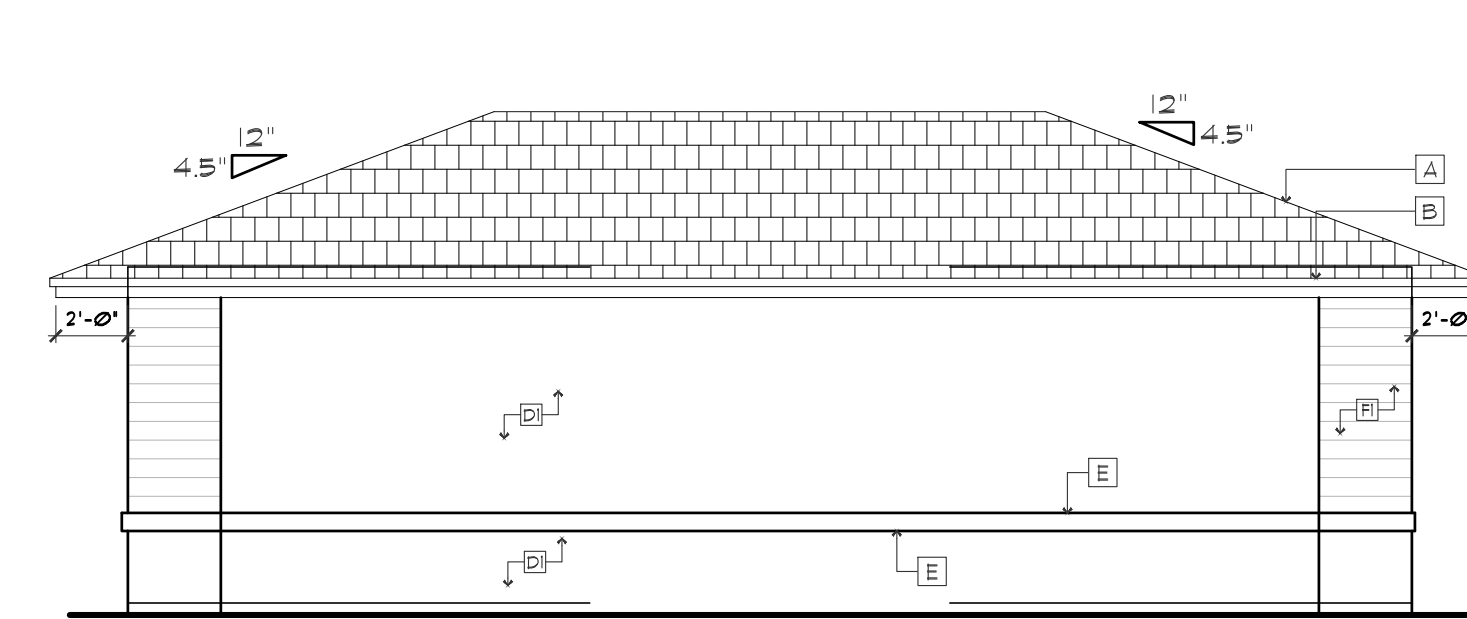
SCALE 3/16" = 1'-0"



LEFT ELEVATION

MAINTENANCE BLDG.

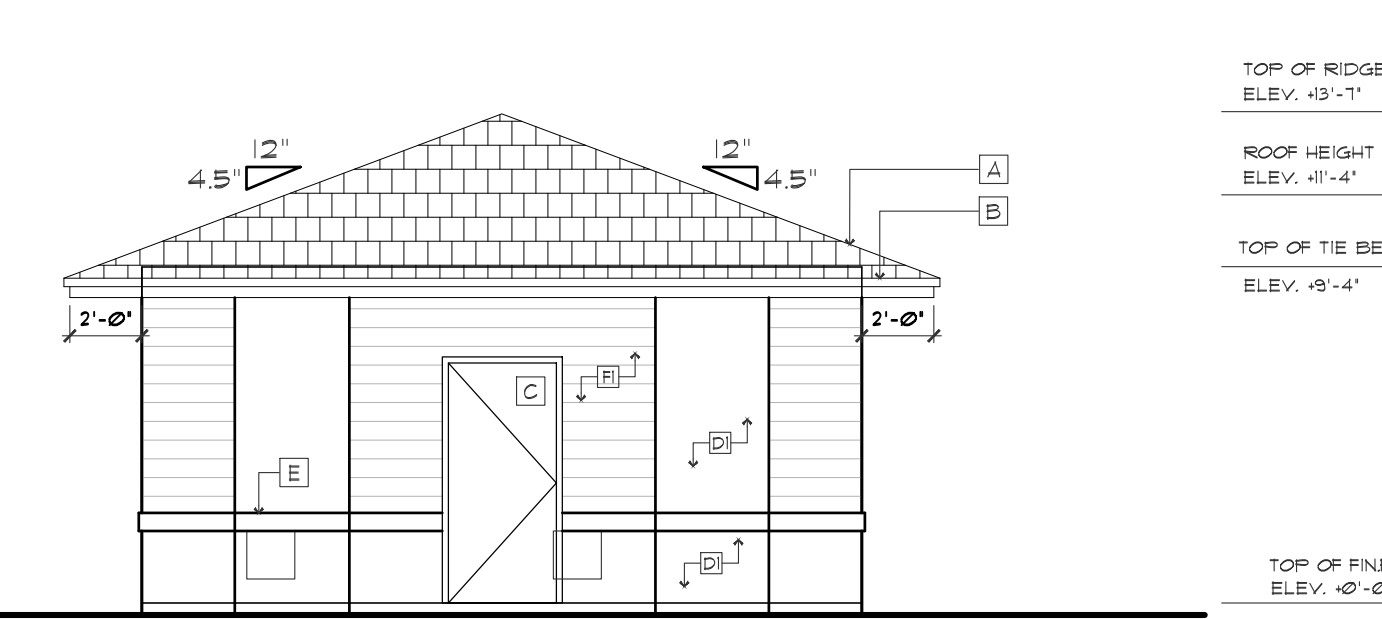
SCALE 3/16" = 1'-0"



REAR ELEVATION

MAINTENANCE BLDG.

SCALE 3/16" = 1'-0"

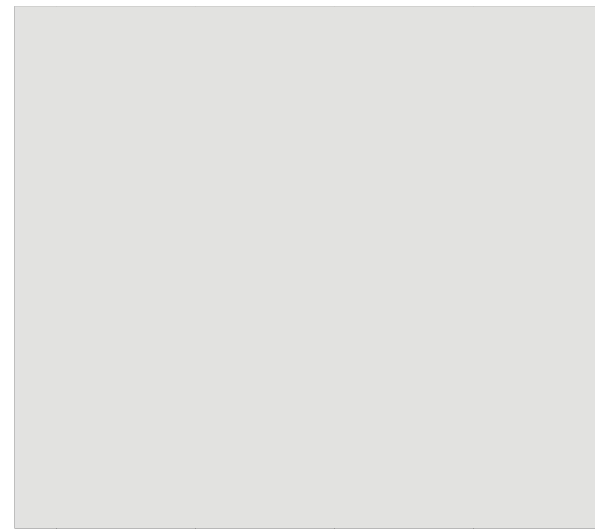


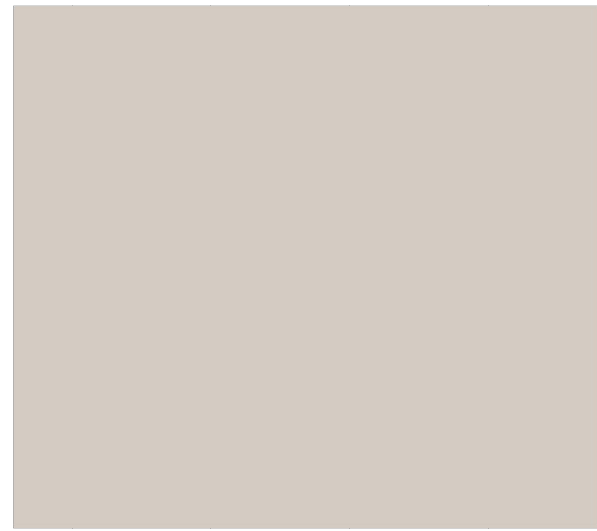

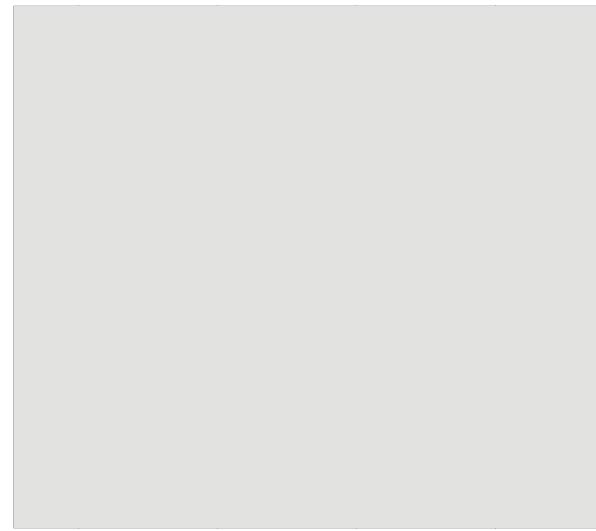

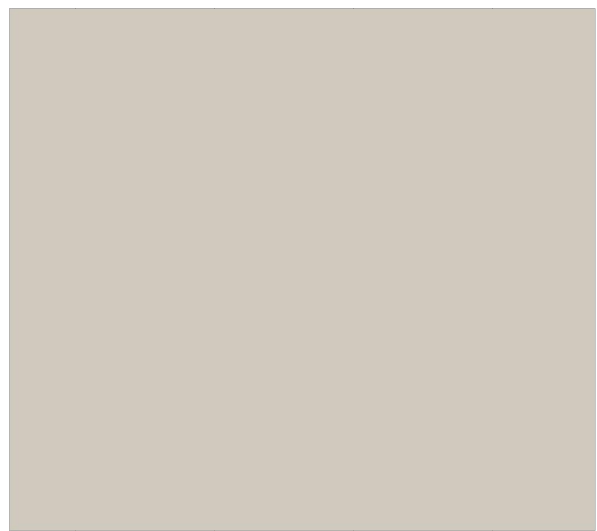



RIGHT ELEVATION

MAINTENANCE BLDG.

SCALE 3/16" = 1'-0"

COLOR SCHEMES

	BODY	STUCCO ACCENTS	TRIMS & OVERHANGS	FACIA & DOOR	WINDOW FRAMES	ARCHITECTURAL GRADE ASPHALT SHINGLES	PAVERS	COACH LIGHT
SCHEME 1	 SW 7077 ORIGINAL WHITE	 SW 6260 UNIQUE GRAY	 SW 6252 ICE CUBE	 SW 7024 FUNCTIONAL GRAY	 BRONZE	 DRIFTWOOD BROWN OR EQUIVALENT	 4x8 SANDSTONE OR EQUIVALENT	 BRONZE
SCHEME 2	 SW 6071 POPULAR GRAY	 SW 6073 PERFECT GREIGE	 SW 6252 ICE CUBE	 SW 7024 FUNCTIONAL GRAY	 BRONZE	 DRIFTWOOD BROWN OR EQUIVALENT	 4x8 SANDSTONE OR EQUIVALENT	 BRONZE
SCHEME 3	 SW 7008 ALABASTER	 SW 7050 USEFUL GRAY	 SW 6252 ICE CUBE	 SW 7024 FUNCTIONAL GRAY	 BRONZE	 DRIFTWOOD BROWN OR EQUIVALENT	 4x8 SANDSTONE OR EQUIVALENT	 BRONZE

LEGEND

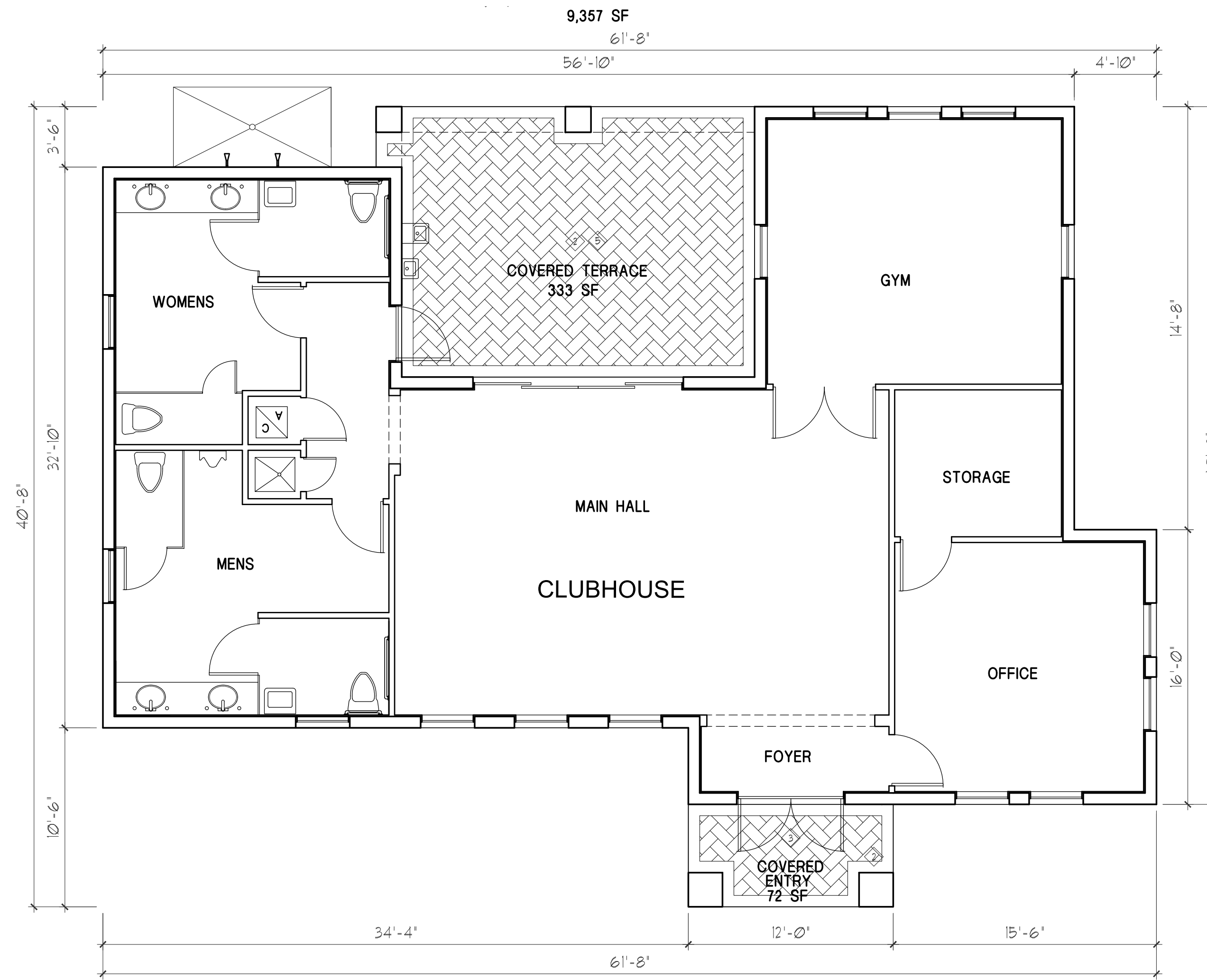
- [A] ARCHITECTURAL GRADE ASPHALT SHINGLE TILE ROOF
 30 YEAR / 320 LB MIN.
 DRIFTWOOD BROWN OR EQUIVALENT
- [B] 2X8 SMOOTH FINISH WOOD FASCIA
 COLOR: SW 1024 FUNCTIONAL GRAY
- [D] STUCCO AFFLICTION (COLOR SCHEME 3)
 COLOR: SW 1008 ALABASTER
- [F] 1" STUCCO REVEAL @ 6" (COLOR SCHEME 3)
 COLOR: SW 1050 USEFUL GRAY
- [G] SMOOTH STUCCO TRIM
 COLOR: SW 6252 ICE CUBE

ARCHITECTURAL ELEMENTS

- 1 RECTANGULAR WINDOWS.
- 2 USABLE OPEN SPACE AT LEAST 2,000 SF.
- 3 PORCH
- 4 STUCCO WITH 6" HORIZONTAL GROOVE PATTERN.
- 5 CONCRETE PAVERS.

NOTE

ANY CHANGES TO THE BUILDING DESIGN OR COLOR MUST BE MADE IN COMPLIANCE WITH THE CITYWIDE DESIGN STANDARDS.



CLUBHOUSE FLOOR PLAN

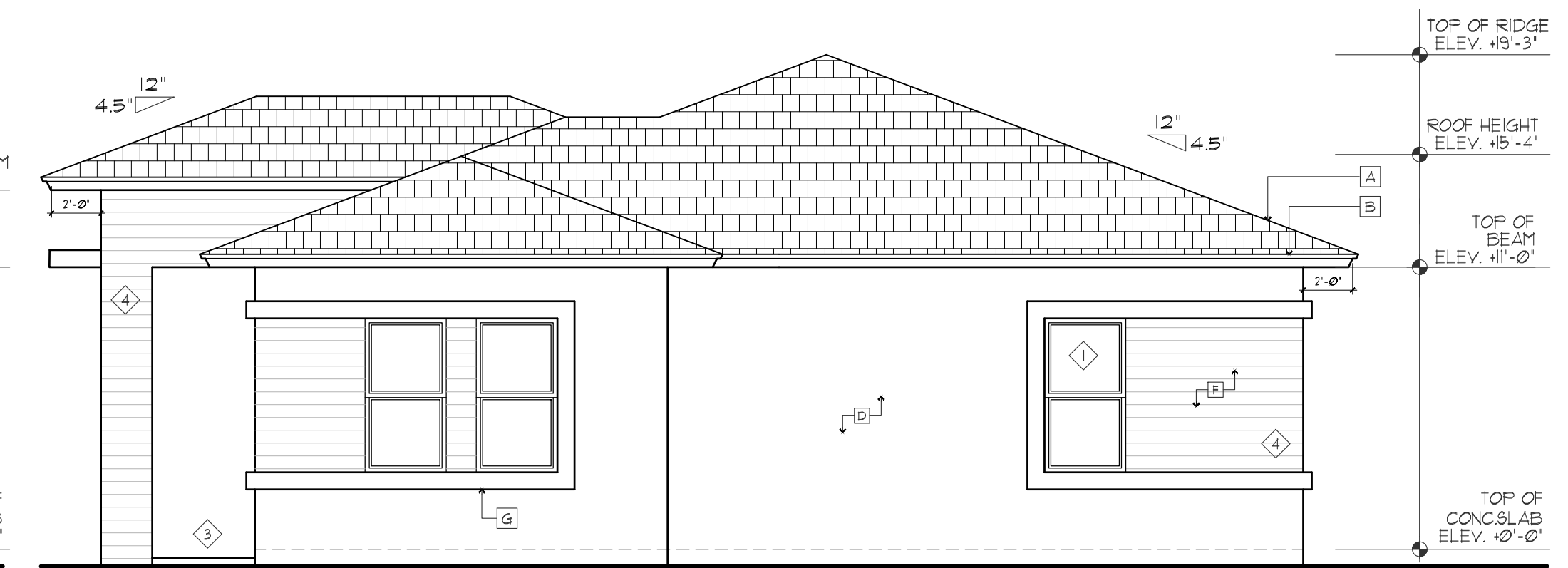
SCALE: 3/16" = 1'-0"

AREAS	A/C AREA	
CLUBHOUSE	1,859 SF	
COV. ENTRY	333 SF	
COV. TERRACE	72 SF	
TOTAL	2,264 SF	



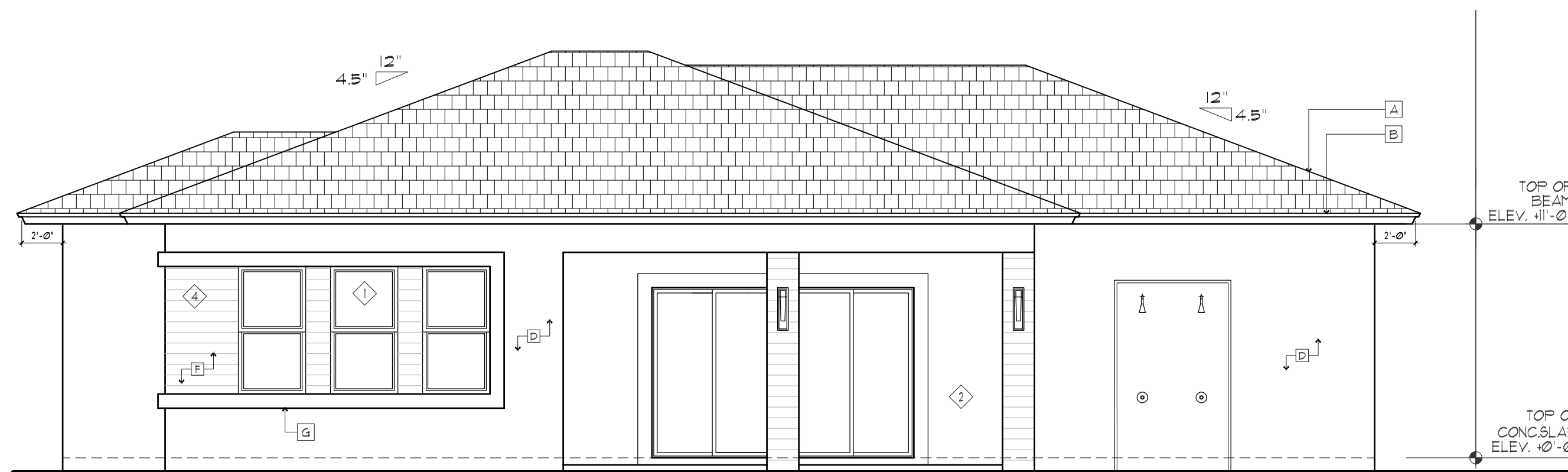
CLUBHOUSE FRONT ELEVATION

SCALE: 3/16" = 1'-0"



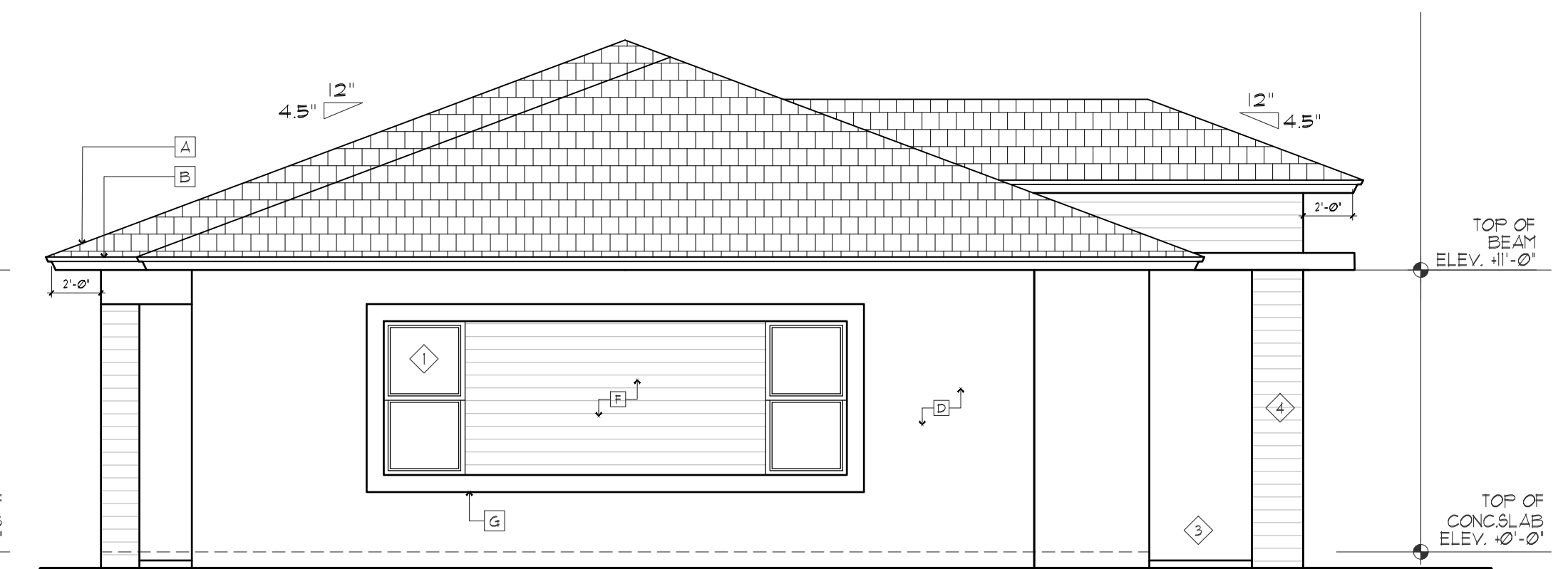
CLUBHOUSE RIGHT ELEVATION

SCALE: 3/16" = 1'-0"



CLUBHOUSE REAR ELEVATION

SCALE: 3/16" = 1'-0"



CLUBHOUSE RIGHT ELEVATION

SCALE: 3/16" = 1'-0"