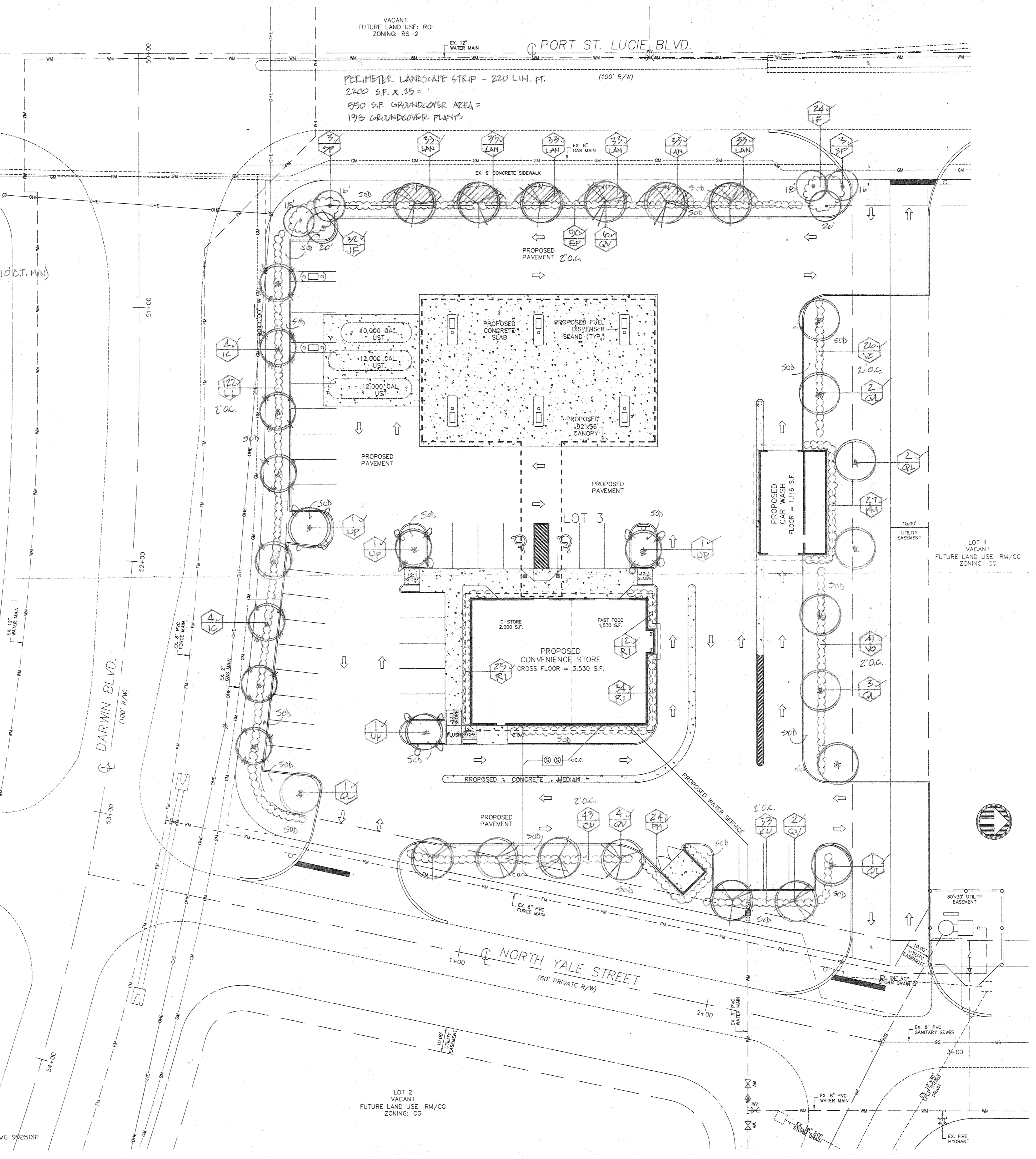
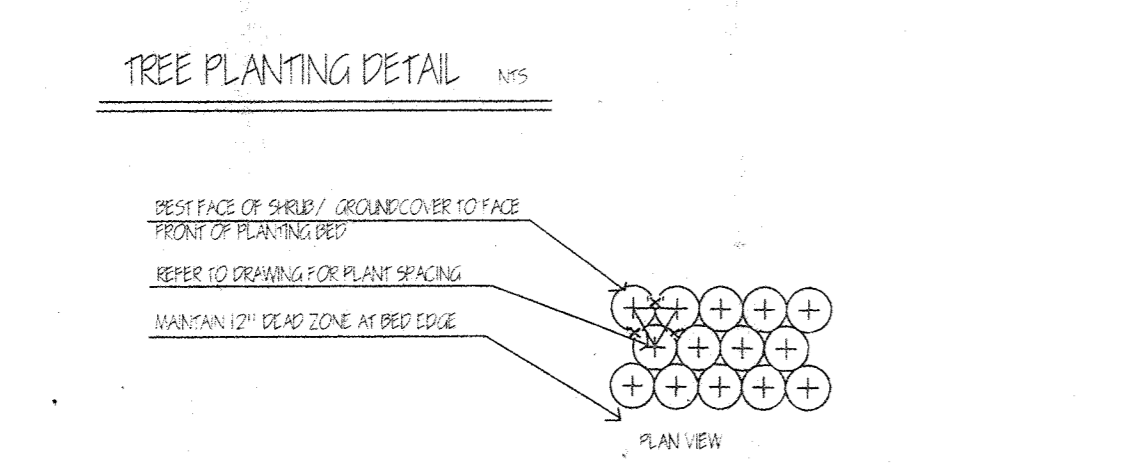
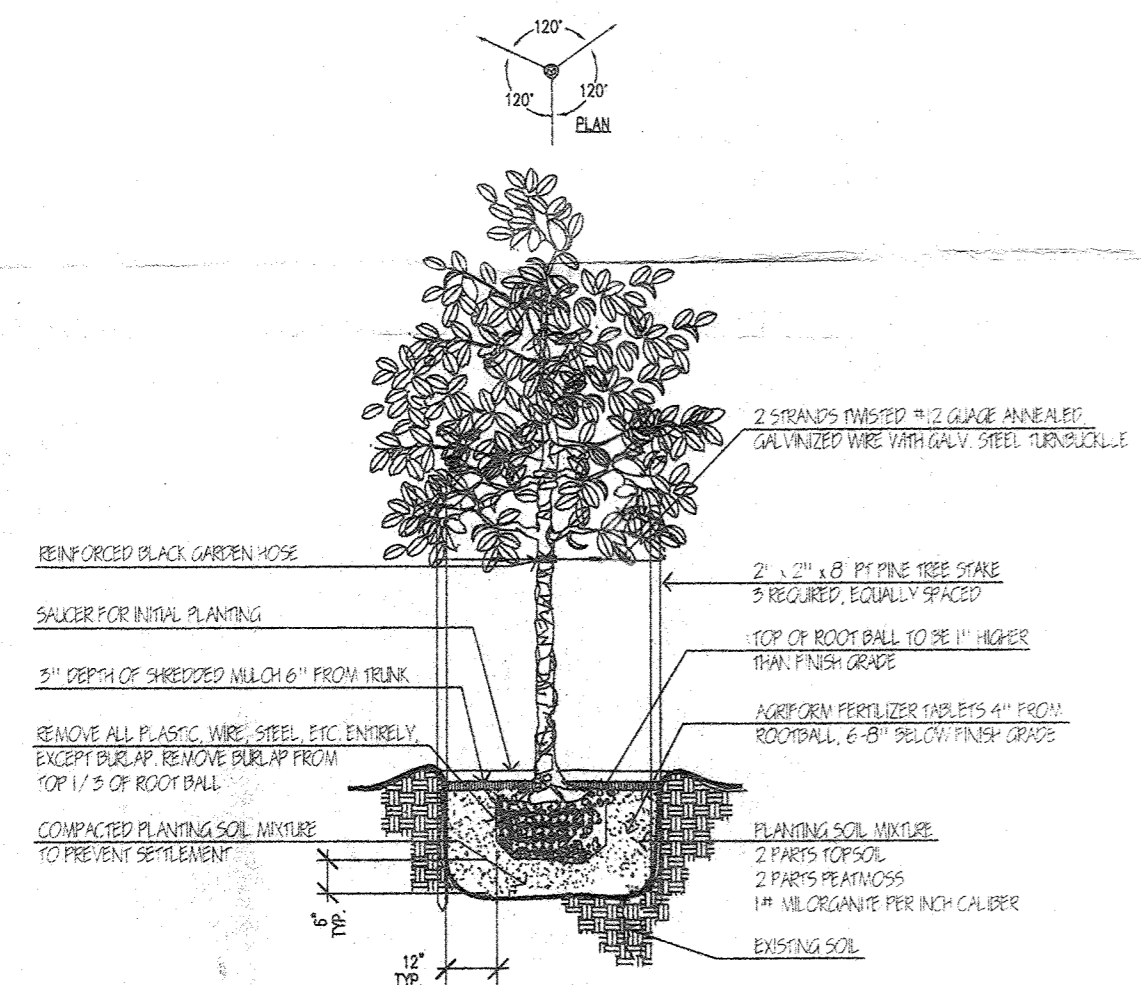


Date	Revision
4/13/00	

KEY	QTY	BOTANICAL NAME	COMMON NAME	SIZE (HT. X SP)	CONT.
EP	24	CHRYSOBALANUS ICACO	COCOPALM	24" X 18"	#3
EP	90	ELEAGNUS PUNGENS	SILVERTHORN	24" X 18"	#3
VI	8	ILEX CASSINE	DAHOON HOLLY	10-12' X 4' 1/2" *	B&B
RI	71	RAPHANOLEPIS INIBICA	INDIA HAWTHORN	12' X 16"	#3
LAN	190	LANTANA MONTEVIDENSIS	GOLD LANTANA	FULL POTS	6 PT
LL	122	LIGUSTRUM LUCIDUM	LIGUSTRUM	24" X 18"	#3
IF	56	ILICUM FLORIDANUM	FLORIDA ANISE	24" X 18"	#3
CV	76	COCCOLOBA UVIFERA	SEA GRAPE	24" X 18"	#3
PH	51	RODOLPHUS MACROPHYLLA	JAPANESE YEW	24" X 18"	#3
QL	9	QUERCUS LAURIFOLIA	LAVIPEL OAK	10-12' X 4' 1/2" *	B&B
QV	12	QUERCUS VIRGINIANA	LIVE OAK	10-12' X 4' 1/2" *	B&B
VP	6	SABAL PALMETTO	SABAL PALM	O.A. AS INDICATED	B&B
NO	67	VIDUETHUM ODO RATISSIMUM	SWEET VIBURNUM	24" X 18"	#3
4	4	UHMUS PAEVI FOLIA	DRAKE ELM	10-12' X 4' 1/2" *	B&B

LANDSCAPE MATERIAL TO BE FLA.#1 OR BETTER
 5/8" MESH MULCH TO BE 2" THICKNESS MINIMUM
 FULLY AUTOMATIC IRRIGATION SYSTEM TO PROVIDE 100% COVERAGE IN 15 MPH WIND
 APPLY AGRIFORM FERTILIZER TABLETS PER MFR'S DIRECTIONS TO ALL LANDSCAPE MATERIALS



William A. Flint, III
 Landscape Architect
 Stuart, FL
 FLA. Reg. # 041
 Fax: 561.220.8915

DARWIN PLAZA BRESS
 PORT ST. LUCIE BLVD.
 PORT ST. LUCIE, FL

DATE: 11.3.99
 DRAWN: WAF
 CHECKED:
 SCALE: 1" = 20'
RECEIVED

APR 19 2000
 Planning Department
 City of Port St. Lucie, FL

ILLEGIBLE WATERMARK PRESENTED FOR RECORD

CLIENT: FRANCIS JAMES LLP darwin_bress.dwg Sat Nov 13 18:30:16 1999 MAF