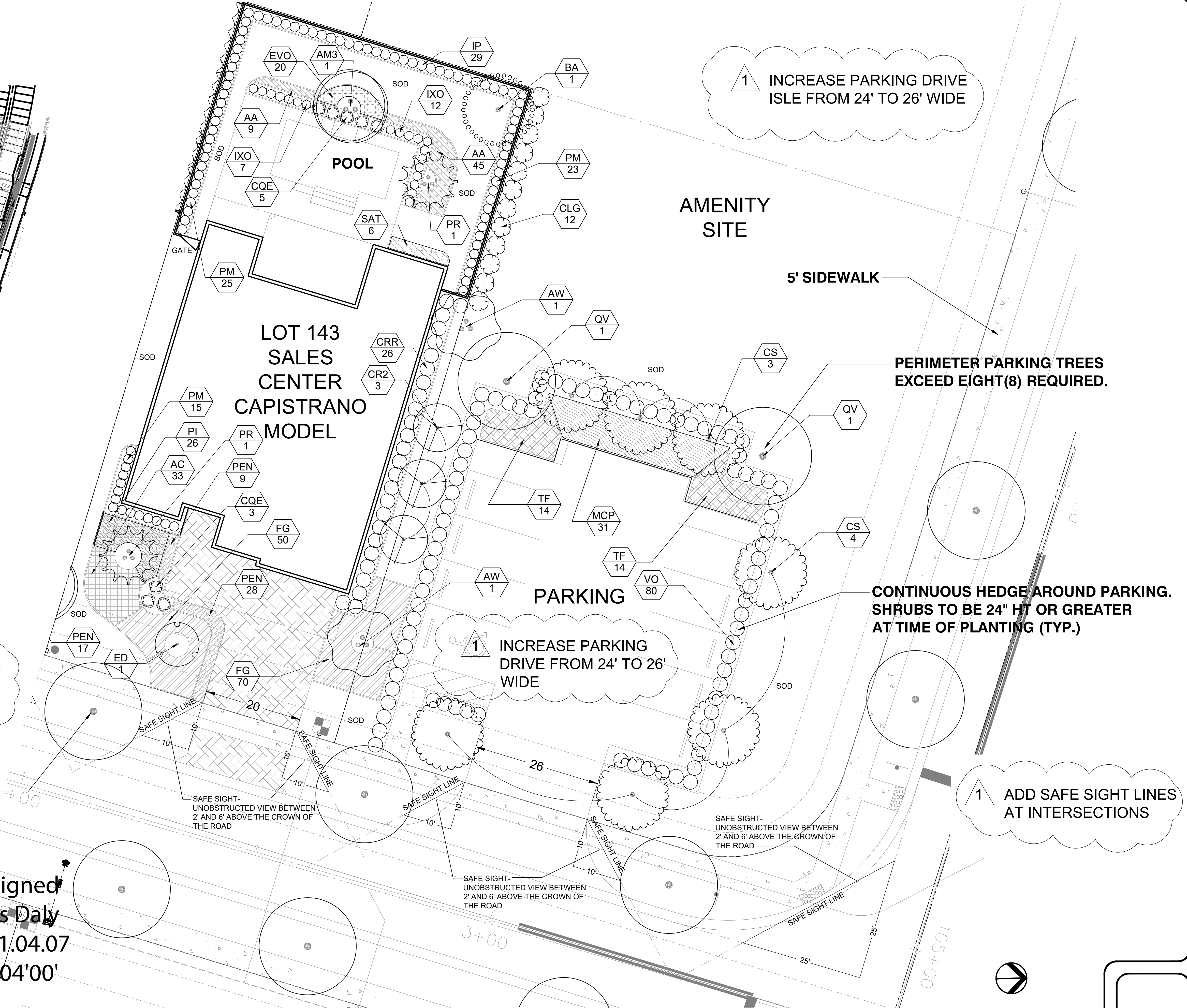




MODEL PARK
BELTERRA ENTRANCE
BECKER ROAD



1 INCREASE PARKING DRIVE ISLE FROM 24' TO 26' WIDE

1 INCREASE DRIVEWAY WIDTHS TO 20'

1 INCREASE PARKING DRIVE FROM 24' TO 26' WIDE

CONTINUOUS HEDGE AROUND PARKING. SHRUBS TO BE 24" HT OR GREATER AT TIME OF PLANTING (TYP.)

1 ADD SAFE SIGHT LINES AT INTERSECTIONS

LIVE OAK STREET TREE (TYP.) SHOWN FOR LOCATION - SEPARATE PLANS

thomas Daly Digitally signed by thomas Daly
Date: 2021.04.07 08:53:03 -04'00'

PSLUSD#5336A
MODEL HOME PARK P19-182

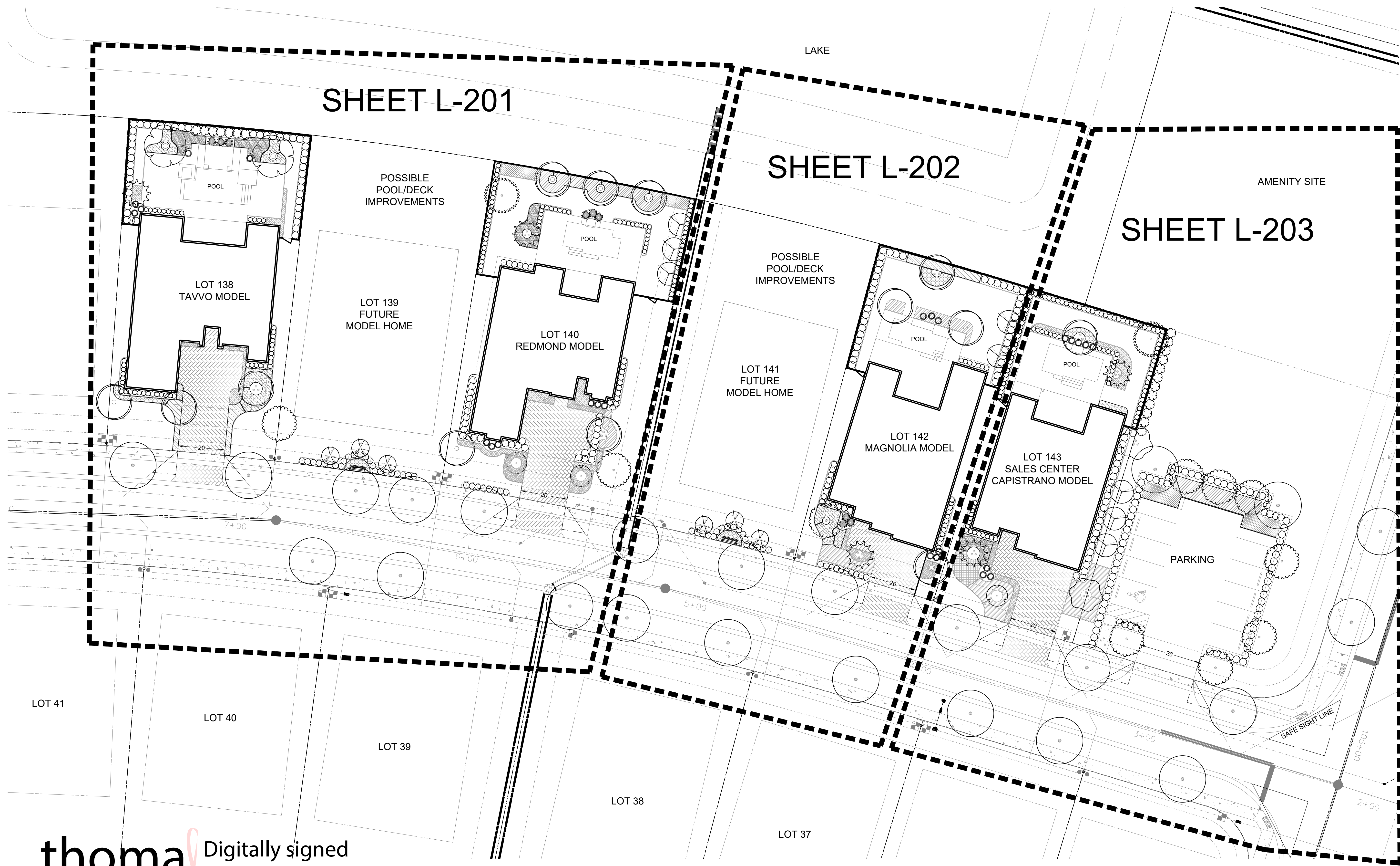


daly design group inc.
Urban Planning, Landscape Architecture, Project Management, Development Consulting
913 N Pennsylvania Ave, Winter Park, FL 32789 (407) 740-7373 www.dalydesign.com

REV	DATE	DESCRIPTION	BY
1	4.6.21	REV DRIVEWAY WIDTHS/SAFE SIGHT	

MODEL LOT 143 & PARKING
LANDSCAPE PLAN
BELTERRA
Port St. Lucie, Florida

PROJECT NO. 1906
SCALE
DATE FEB 2021
SHEET L-203



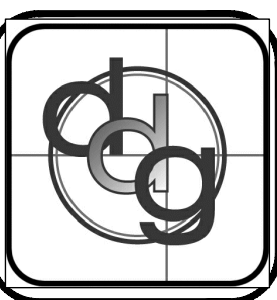
**thomas
s Daly** Digitally signed
by thomas Daly
Date: 2021.04.06
13:09:34 -04'00'

PSLUSD#5336A
MODEL HOME PARK P19-182

daly design group inc.
Urban Planning, Landscape Architecture, Project Management, Development Consulting
913 N Pennsylvania Ave, Winter Park, FL 32789 (407) 740-7373 www.dalydesign.com

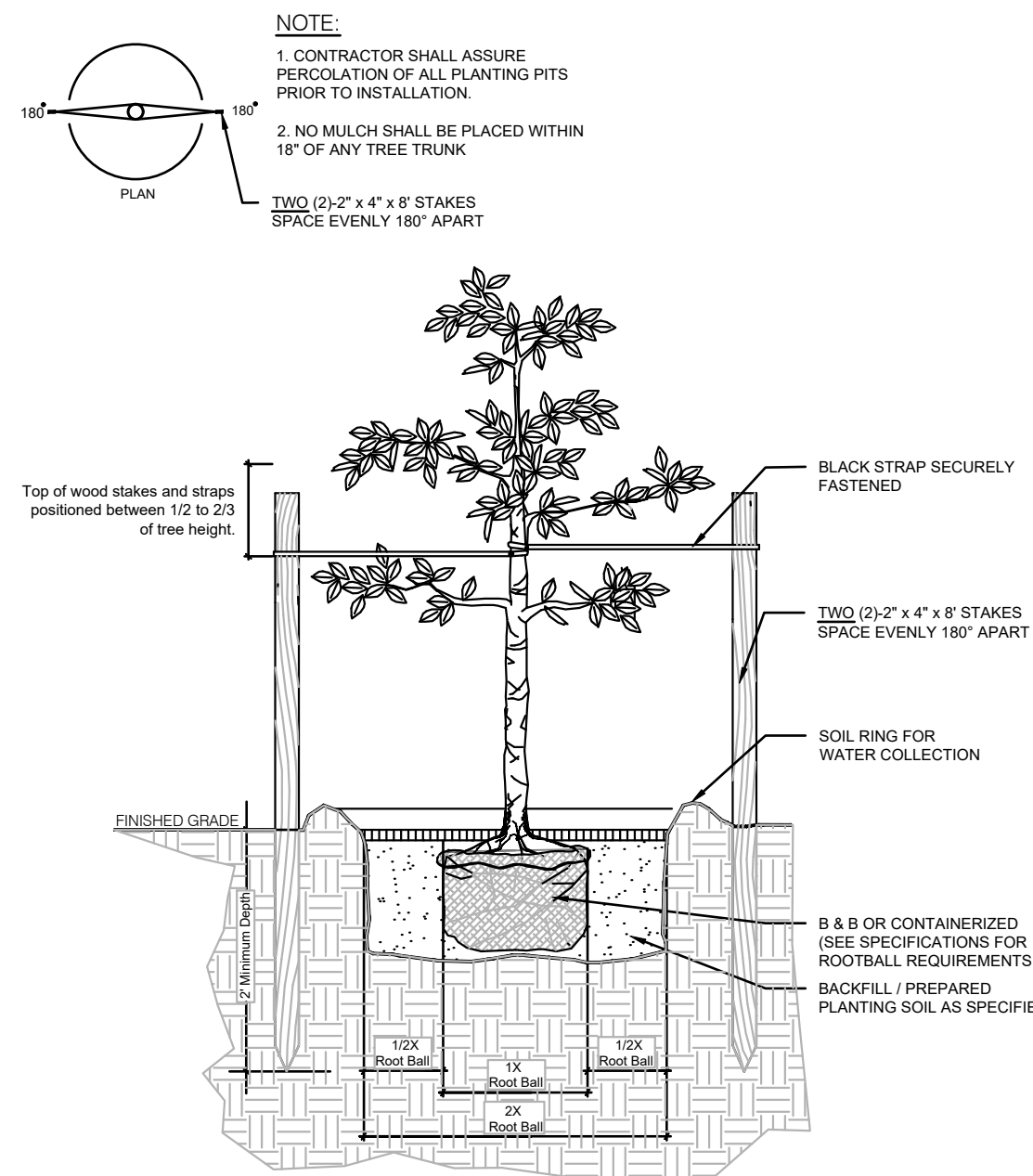
REV	DATE	DESCRIPTION	BY
1	4.6.21	REV DRIVEWAY WIDTHS/SAFE SIGHT	

KEY SHEET
LANDSCAPE PLAN
BELTERRA
Port St. Lucie, Florida



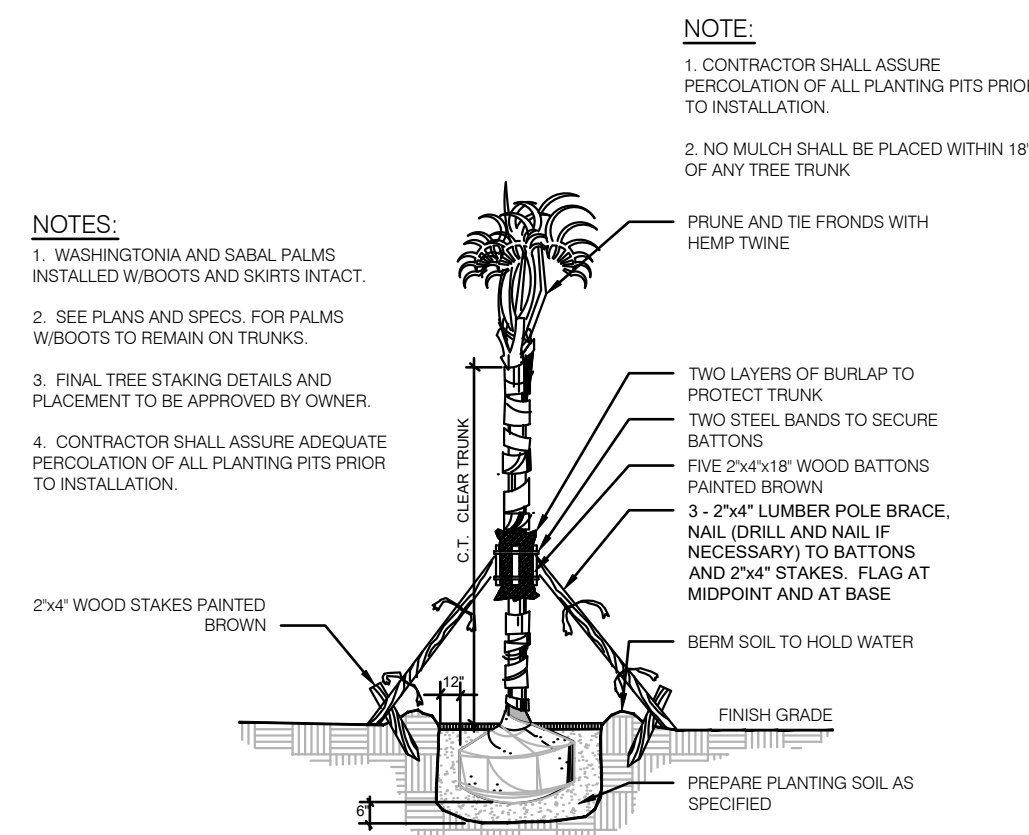
PROJECT NO.
1906
SCALE
DATE
MAR 2021
SHEET
L-210

Details



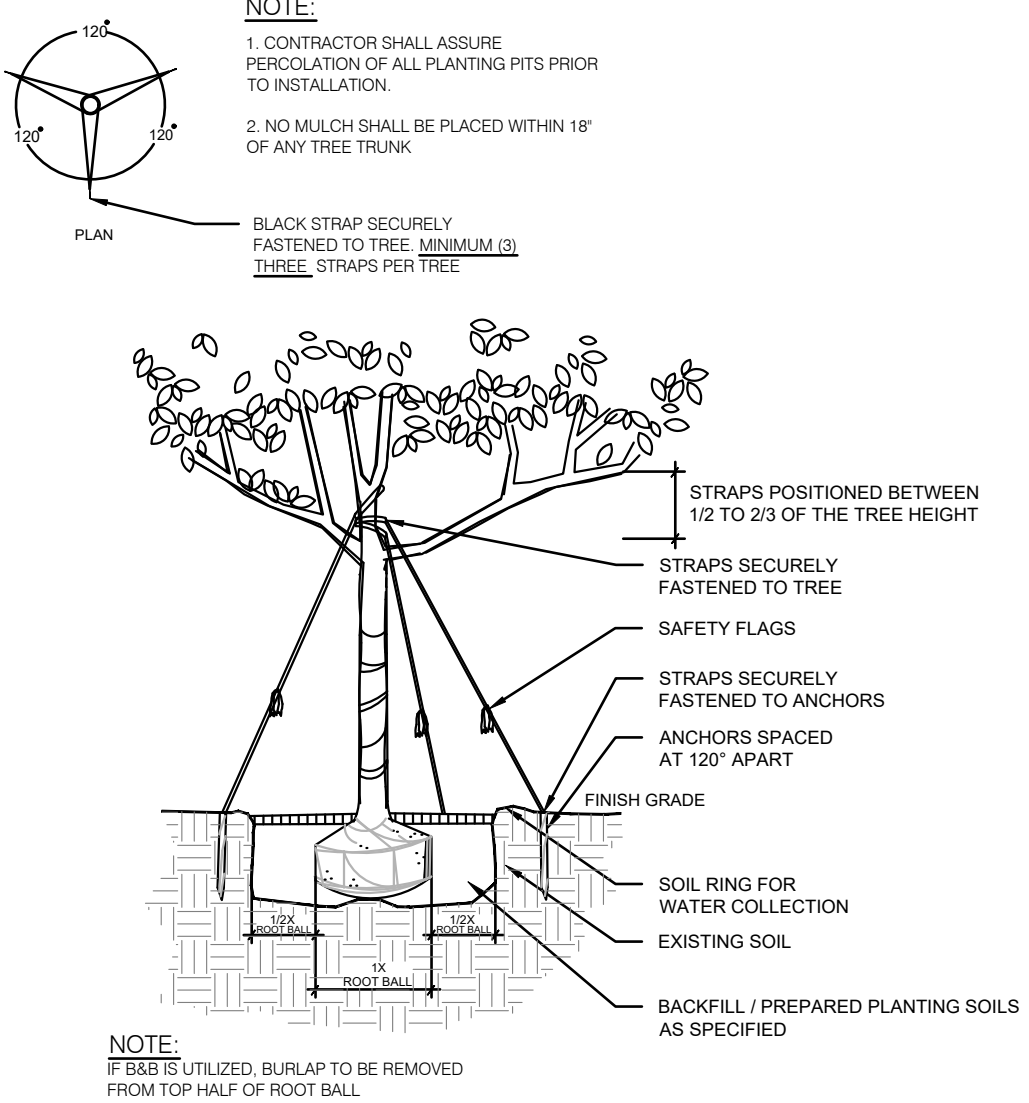
SMALL TREE GUYING DETAIL

Detail for trees between 1" and 2.5" cal. NOT TO SCALE



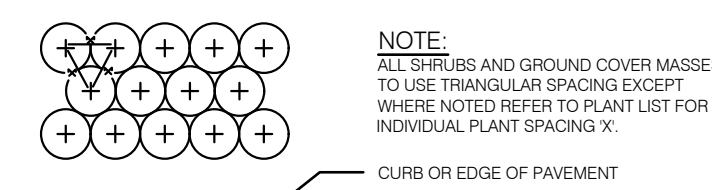
PALM TREE GUYING DETAIL

Detail for trees greater than 2.5" cal. NOT TO SCALE



LARGE TREE GUYING DETAIL

Detail for trees greater than 3" cal. NOT TO SCALE



TYPICAL PLANT SPACING

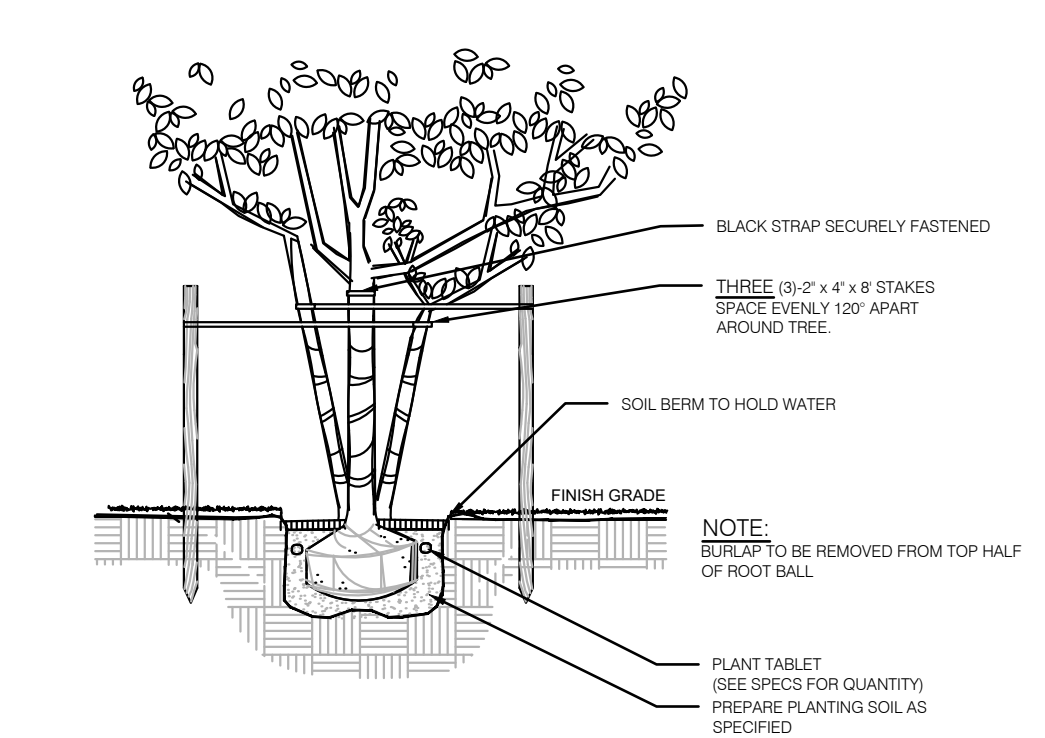
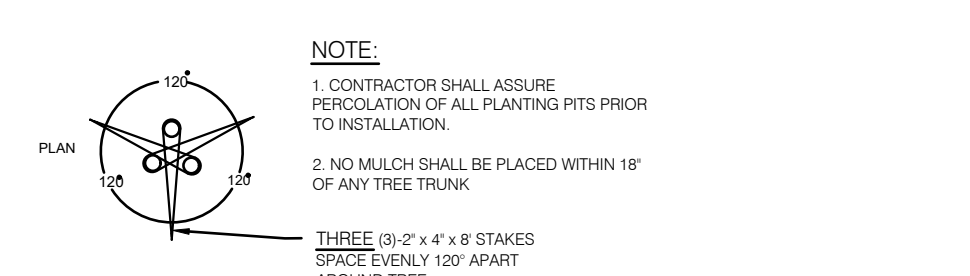
NOT TO SCALE

Landscape & Utilities

- All landscape plans must show the location of existing or proposed utility lines that could be impacted by the vegetation being planted. no landscaping shall be planted in such a manner as to adversely affect drainage or underground or above ground utility facilities.
- No tree shall be planted where it could, at mature height, conflict with overhead power lines. Trees planted within any easement with overhead utilities shall comply with the latest edition of FPL's publication "Plant the Right Tree in the Right Place", and take into consideration the mature height and spread of the species beneath or adjacent to existing overhead utilities. Where overhead utilities exist, small trees, with a mature height of less than twenty (20) feet may be substituted for required shade trees at a ratio of 1:1.
- All landscaping within ten (10) feet of underground or above ground Port St. Lucie Utility System Department (PSLUSD) utility infrastructure shall comply with PSLUSD technical specifications, policies and codes.
- Trees shall not be planted within ten (10) feet of any PSLUSD underground infrastructure.
- Tree of species whose roots are known to cause damage to public roadways, utilities, sidewalks, or other public works shall not be planted closer than 10 feet to those public works.
- In those instances where a tree(s) is planted closer than five (5) feet from a sidewalk, or structure, a root barrier(s) shall be installed. Root barriers for trees shall be installed along the edge of structure, paving, or curb. The root barrier shall be a minimum of twenty-four (24) inches deep, but depending on size, location, and species of tree to be planted, a larger barrier may be required. The root barrier shall be installed with twenty (20) linear feet, centered from the trunk, for large trees and fifteen (15) linear feet for smaller trees. All root barriers shall be linear.
- Vertical Clearance Over a Roadway. Trees that encroach into roadways shall be maintained in accordance with the St. Lucie County Fire District Fire Prevention Code.
- No landscaping within five(5) feet of any PSL utility lines, only sod.
- Trees to be 10' min. from street lights.

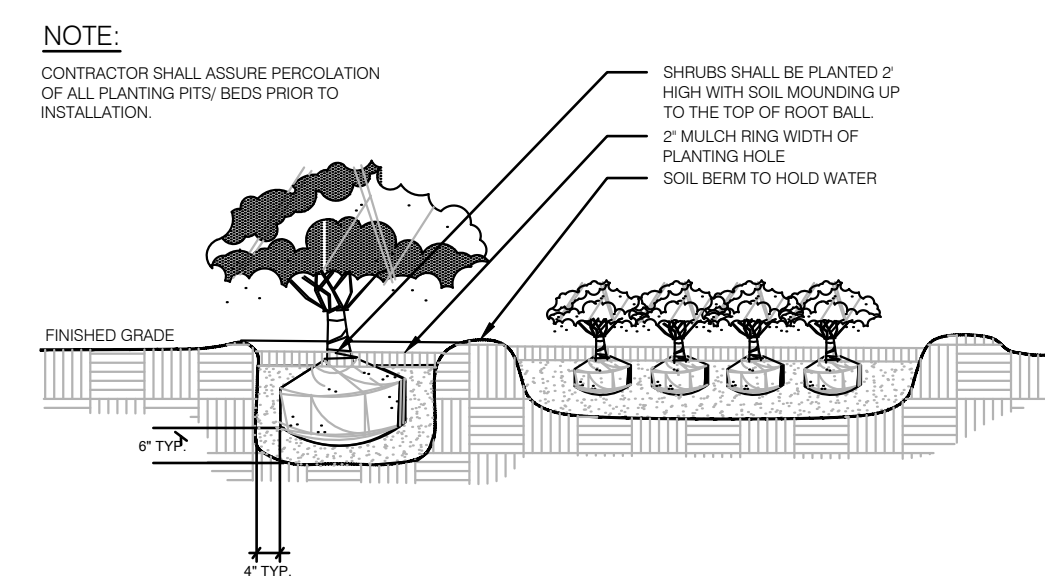
General Plant Schedule

TREES	QTY	BOTANICAL NAME	COMMON NAME	REMARKS / FLA. FRIENDLY Y/N
AW	2	Accelorrhaphe wrightii	Paurotis Palm	MIN. FG. 8' - 16' HTS., 5-9 TRUNKS. (FF/YES)
AM3	4	Adonia merrillii	Triple Christmas Palm	MIN. FG. 8' - 14' CT. TRIPLE. (FF/YES)
BA	2	Bulnesia arborea	Verawood Tree	MIN. 65 GAL., 14' HT., 3" CAL. (FF/YES)
CR2	8	Callistemon rigidus 'Red Cluster'	Red Cluster Bottle Brush	MIN. 8' HT. UPRIGHT, FULL HEAD. (FF/YES)
CS	10	Conocarpus erectus 'Sericeus'	Silver Buttonwood	MIN. 30 GAL., 8' HT., FULL HEAD. MATCHED. (FF/YES)
ED	3	Elaeocarpus decipiens	Japanese Blueberry Tree	MIN. 30 GAL., 12' HT., 2.5" CAL. FULL HEAD. (FF/YES)
JAT	6	Jatropha integririma 'Compacta'	Compact Spicy Jatropha	MIN. 30 GAL., 7' HT. FULL HEAD. MULTI STEM. (FF/YES)
PR	5	Jatropha roebelenii	Pigmy Date Palm Multi-Trunk	MIN. FG. 5' - 8' CT. TRIPLE-STAG HEADS. (FF/YES)
PS	2	Phoenix sylvestris	Sylvestre Date Palm	MIN. BB. 8' CT., MATCHED. (FF/YES)
QV	2	Quercus virginiana	Southern Live Oak	min. 65 gal., 14' ht., 3" cal., matched. (FF/YES)
WB	9	Wodyetia bifurcata	Foxtail Palm	MIN. BB. 8' CT., MATCHED. (FF/YES)
SHRUBS	QTY	BOTANICAL NAME	COMMON NAME	REMARKS
BM	64	Buxus microphylla	Littleleaf Boxwood	MIN. 3 GAL. 24" HT. X 18" SPD., 24" OC. (FF/YES)
CHG	43	Chrysobalanus icaco	Coco Plum- Green Tip	MIN. 7 GAL., 30" HT. X 30" SPD., 36" OC. (FF/YES)
CRR	74	Chrysobalanus icaco 'Red Tip'	Red Tip Cocoplum	MIN. 7 GAL., 36" HT. X 30" SPD., 36" O.C. (FF/YES)
CLG	19	Clusia guttifera	Small Leaf Clusia	MIN. 3 GAL., 6' HT. 3" SPD., 3' OC. (FF/YES)
CES	29	Conocarpus erectus 'Sericeus'	Silver Buttonwood	MIN. 3 GAL., 24" HT. X 24" SPR., 24" OC. (FF/YES)
COE	25	Crinum augustum 'Queen Emma'	'Queen Emma' Crinum	MIN. 7 GAL., FULL. (FF/YES)
HAM	24	Hamelia patens	Firebush	MIN. 3 GAL., 24" HT. X 24" SPD., 24" O.C. (FF/YES)
IP	48	Illicium floridanum	Florida Anise	MIN. 7 GAL., 24" HT. X 24" SPR., 24" OC. (FF/YES)
IXO	59	Ixora coccinea 'Petite Red'	Dwarf Red Ixora	MIN. 3 GAL., 18" HT. X 18" SPD./ 24" OC. (FF/NO)
PM	145	Podocarpus macrophyllus	Podocarpus	MIN. 7 GAL., 36" HT. X 30" SPR., 30" OC. (FF/YES)
SR	9	Strelitzia reginae	Bird Of Paradise	MIN., 7 GAL., FULL. (FF/YES)
VO	85	Viburnum odoratissimum	Sweet Viburnum	MIN. 3 GAL., 36" HT. X 30" SPD, 36" OC. (FF/YES)
SHRUB AREAS	QTY	BOTANICAL NAME	COMMON NAME	REMARKS
EVO	118	Evolvulus glomeratus 'Blue Daze'	Brazilian Dwarf Morning Glory	MIN. 1 GAL., 12" HT. X 12" SPR., 18" OC. (FF/YES)
MCP	69	Muhlenbergia capillaris	Pink Muhly	MIN. 3 GAL., 24" HT. X 24" SPR., 36" O.C. (FF/YES)
PI	103	Plumbago auriculata 'Imperial Blue'	Plumbago	MIN. 3 GAL., 24" HT. X 24" SPR., 24" O.C. (FF/YES)
RIA	68	Rhaphirolepis indica	Indian Hawthorn	MIN. 3 GAL., 18" HT. X 18" SPR., 24" O.C. (FF/YES)
SAT	77	Schefflera arboricola 'Trinette'	Trinette Variegated Schefflera	MIN. 3 GAL. 24" HT. X 24" SPD., 30" OC. (FF/NO)
TF	45	Tripsacum floridanum	Florida Gamagrass	MIN. 3 GAL., 24" HT. X 24" SPR., 36" OC.
GROUND COVERS	QTY	BOTANICAL NAME	COMMON NAME	REMARKS
AA	155	Agapanthus x 'Brilliant Blue' TM	Brilliant Blue African Lily	MIN. 1 GAL., 18" OC. (FF/YES)
AC	33	Allamanda cathartica 'Compacta'	Dwarf Golden Trumpet	MIN., 3 GAL., 18" HT., 24" OC. (FF/YES)
FG	220	Ficus microcarpa 'Green Island'	Green Island Fig	MIN. 3 GAL., 18" HT., 24" OC. (FF/NO)
LIR	56	Liriope muscari 'Big Blue'	Big Blue Lilyturf	MIN. 1 GAL., FULL POT, 12" OC.
PEN	170	Pentas lanceolata	Pentas Purple	MIN., 1 GAL., 18" OC. (FF/YES)



MULTI-TRUNK TREE GUYING DETAIL

Detail for trees with more than 1 trunk. NOT TO SCALE



SHRUB AND GROUND COVER DETAIL

NOT TO SCALE

General Landscape Notes

- Landscape Contractor shall be responsible for all materials and plants as called for on the landscape plans. The list of plant quantities accompanying the plans shall be used as a guide only. Contractor shall verify all quantities and report any discrepancies at time of bidding.
- All plant material shall be graded Florida No. 1 or better, as outlined by "Grades and Standards for Nursery Plants", Florida Department of Agriculture and Consumer Services, division of Plant Industry.
- All planting shall be top dressed with a minimum 2" pine bark mini nuggets.
- The Landscape Contractor shall be wholly responsible for the stability and plumb condition of all trees and shrubs and shall be legally liable for any damage caused by instability of plant material. The staking method, if not shown by detail on this plan, shall be approved by the owner or his/her authorized representative.
- Every possible safeguard shall be taken to protect existing trees that are shown on the landscape plan to be preserved.
- The Landscape Contractor is responsible for cleaning all debris associated with their work.
- Height and spread specifications refer to the overall plant form. Singular branches may not be used to meet minimum requirements. Tree caliper size to be measured 12" above grade.
- All landscaping shall be installed according to accepted commercial planting procedures. Soil, shall be free of limerock, pebbles, or other construction debris.
- Ball & burlap material shall be an acceptable alternative to container grown trees.
- Occasionally there is the potential for site modification due to revised field grading, clearing of existing tree canopy or other unforeseen conditions. The Landscape Contractor shall be responsible for informing the Owner and Landscape Architect of site conditions adverse to the healthy establishment of any plant material prior to planting so that a resolution may be achieved.
- The Landscape Contractor shall be responsible for arranging a pre-construction meeting with the Owner and Landscape architect in order to address and clarify any questions, concerns and/or conditions related to these drawings or the existing site.
- Landscape Contractor shall use appropriate container size to meet minimum plant height, if minimum plant height can not be met with specified container size.
- Certification by Landscape Architect. The landscape architect shall certify in writing to the Director of Planning and Zoning that the landscaping and irrigation have been installed in accordance with the landscaping and irrigation plans approved by the Site Plan Review Committee. No certificates of occupancy or similar authorization will be issued unless the certification has been received verifying the landscaping and irrigation meet the requirements provided herein, and are in conformance with the approved landscape and irrigation plans for the project. This requirement shall not apply to single-family homes.
- Plant Materials. Plant material used in conformance with the provisions of this chapter shall conform to the most recent standards for Florida No. 1 or better as given in "Grades and Standards for Nursery Plants", State of Florida, Department of Agriculture, or equal thereto. Trees and plants used in a required landscape design shall be cold-tolerant, drought-tolerant, or appropriate for the environmental setting in which they are to be planted. The "Waterwise South Florida Landscapes" plant guide, published by the South Florida Water Management District, as amended, should be used to determine appropriate vegetation. Plant materials which are known to be intolerant of paving environments or temperature below 32° F or 0° C, or whose physical characteristics may be injurious to the public or which produce a quantity and/or quality of debris so as to present maintenance difficulties shall not be specified for use.
- Plant materials shall be approved native and suitable non-native trees, shrubs, and ground covers that require minimal maintenance when planted under appropriate conditions. Appendix D: City of Port St. Lucie Suggested Tree List and the South Florida Water Management District "Waterwise South Florida Landscapes" plant guide shall be used as a guide for choosing plant materials.
- Trees shall be a species having an average mature spread of crown greater than 20 feet. Trees shall have a trunk that is maintained in a clean condition with over five feet of clear wood (no branches).

1 INCREASE DRIVEWAY WIDTHS TO 20' /ADJUST PLANT LIST ACCORDINGLY

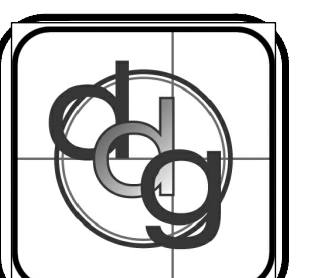
Digitally signed by **thomas Daly** Date: 2021.04.07 08:51:51 -04'00'

PSLUSD#5336A
MODEL HOME PARK P19-182

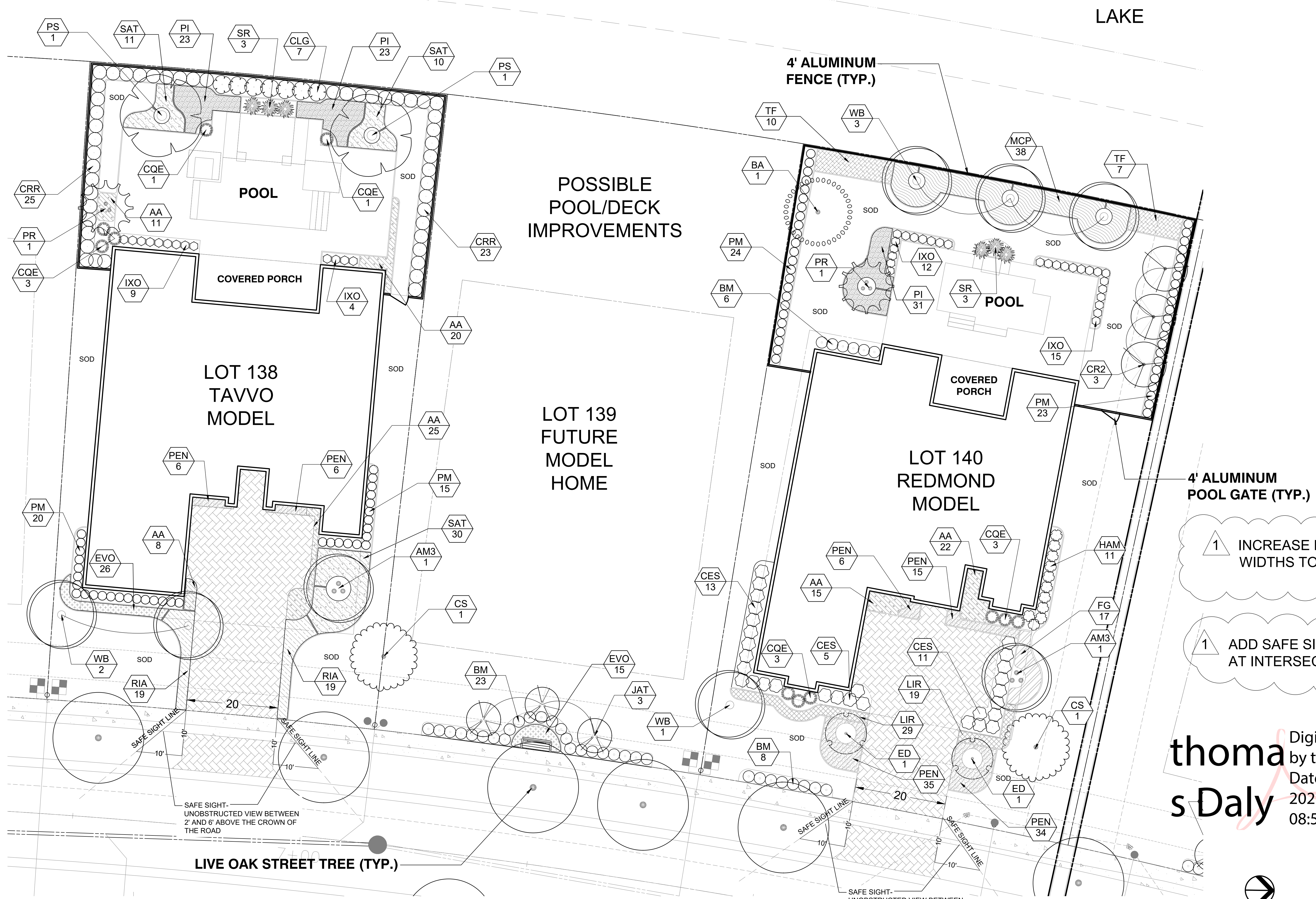
Date: _____

PROJECT NO. 1906
SCALE
DATE MAR 2021
SHEET L-001

Landscape Schedule & Details
Landscape Plan
BELETERRA
PORT ST. LUCIE, FLORIDA



daly design group inc.
Urban Planning, Landscape Architecture, Project Management, Development Consulting
913 N Pennsylvania Ave, Winter Park, FL 32789 (407) 740-7373 www.dalydesign.com



LAKE

POSSIBLE
POOL/DECK
IMPROVEMENTS

LOT 138
TAVVO
MODEL

LOT 139
FUTURE
MODEL
HOME

LOT 140
REDMOND
MODEL

4' ALUMINUM
FENCE (TYP.)

4' ALUMINUM
POOL GATE (TYP.)

1 INCREASE DRIVEWAY
WIDTHS TO 20'

1 ADD SAFE SIGHT LINES
AT INTERSECTIONS

SAFE SIGHT-
UNOBSTRUCTED VIEW BETWEEN
2' AND 6' ABOVE THE CROWN OF
THE ROAD

SAFE SIGHT-
UNOBSTRUCTED VIEW BETWEEN
2' AND 6' ABOVE THE CROWN OF
THE ROAD

LIVE OAK STREET TREE (TYP.)

Digitally signed
by thomas Daly
Date:
2021.04.07
08:52:18 -04'00'

thomas
s Daly

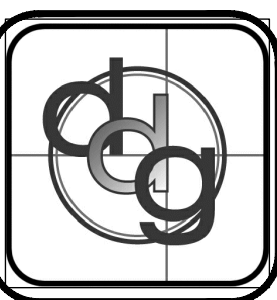
PSLUSD#5336A
MODEL HOME PARK P19-182



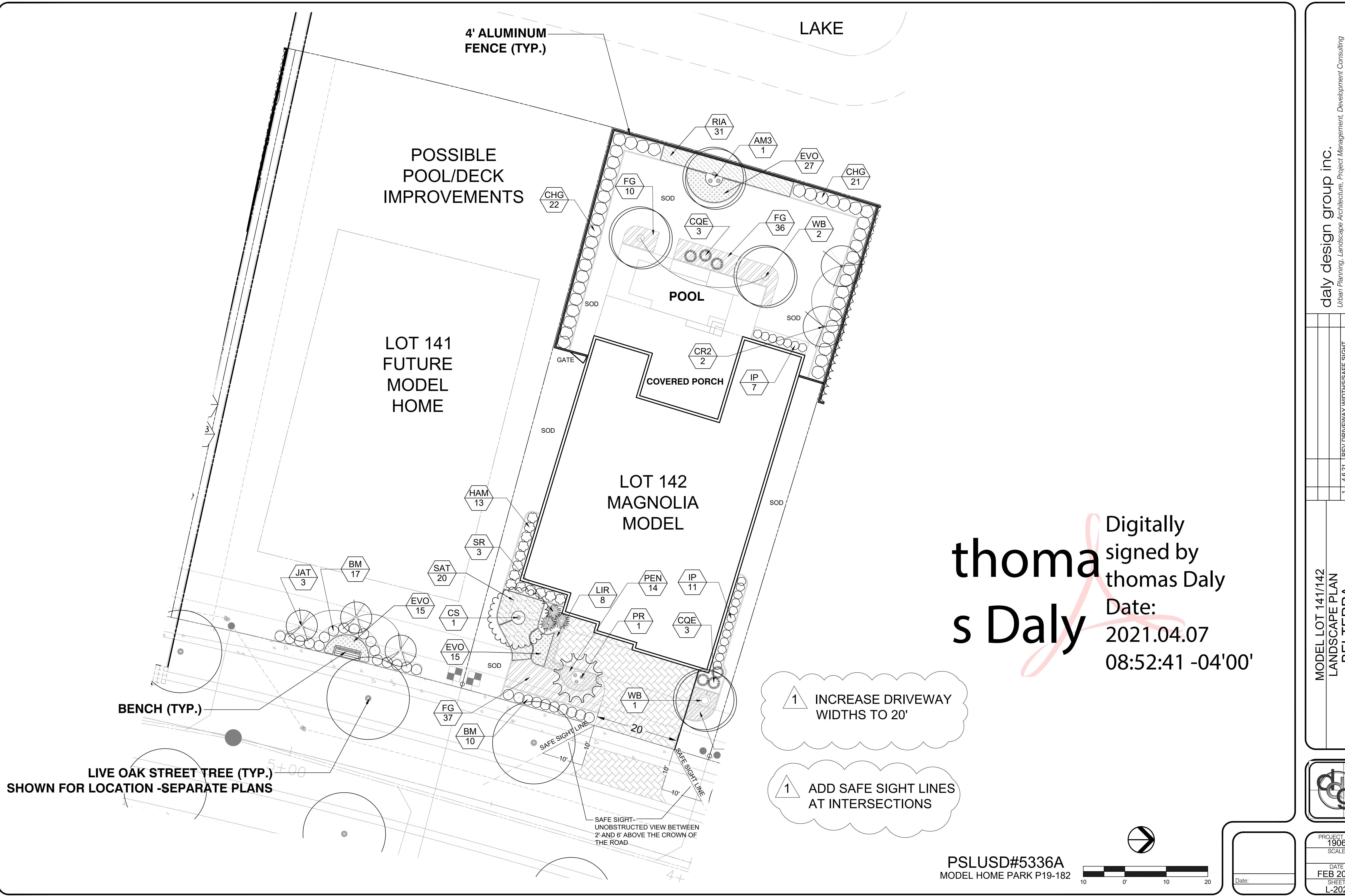
daly design group inc.
Urban Planning, Landscape Architecture, Project Management, Development Consulting
913 N Pennsylvania Ave, Winter Park, FL 32789 (407) 740-7373 www.dalydesign.com

REV	DATE	DESCRIPTION
1	4.6.21	REV DRIVEWAY WIDTHS/SAFE SIGHT

MODEL LOTS 138/139/140
LANDSCAPE PLAN
BELTERRA
Port St. Lucie, Florida



PROJECT NO.
1906
SCALE
DATE
MAR 2021
SHEET
L-201



Digitally signed by
thomas Daly
 Date: 2021.04.07
 08:52:41 -04'00'

daly design group inc.
 Urban Planning, Landscape Architecture, Project Management, Development Consulting
 913 N Pennsylvania Ave, Winter Park, FL 32789 (407) 740-7373 www.dalydesign.com

REV	DATE	DESCRIPTION	BY
1	4.6.21	REV DRIVEWAY WIDTHS/SAFE SIGHT	

MODEL LOT 141/142
 LANDSCAPE PLAN
 BELTERRA
 Port St. Lucie, Florida

PROJECT NO.
 1906
 SCALE
 DATE
 FEB 2021
 SHEET
 L-202

PSLUSD#5336A
 MODEL HOME PARK P19-182