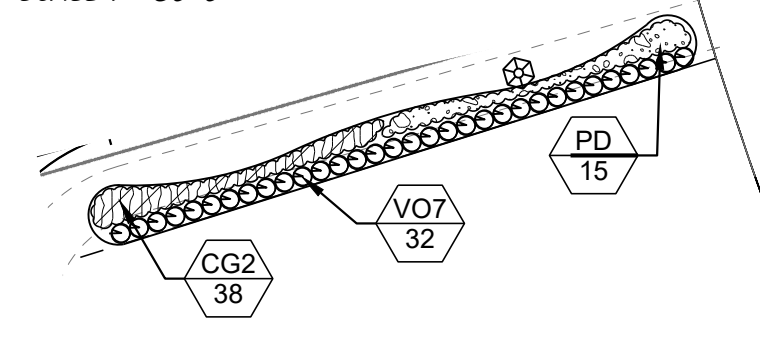
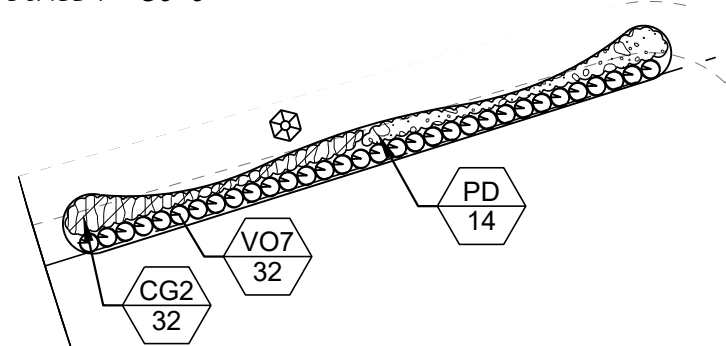


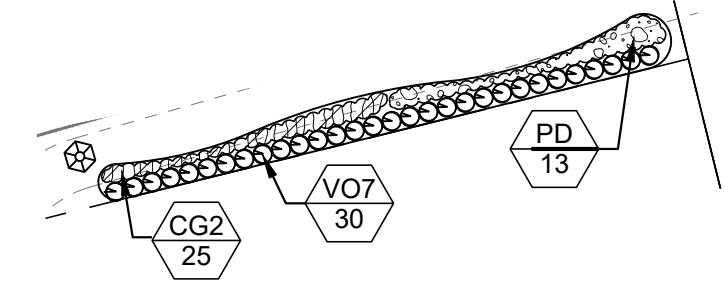
COMMON AREA 18
SCALE 1"=30'-0"



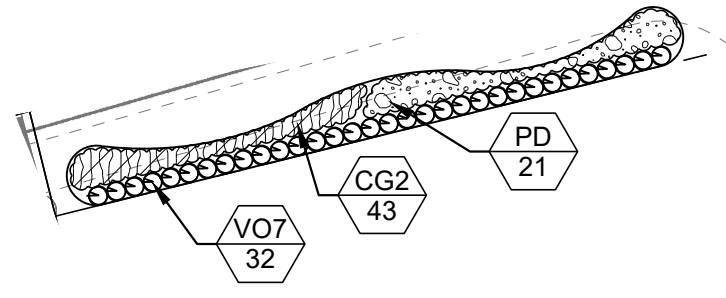
COMMON AREA 15
SCALE 1"=30'-0"



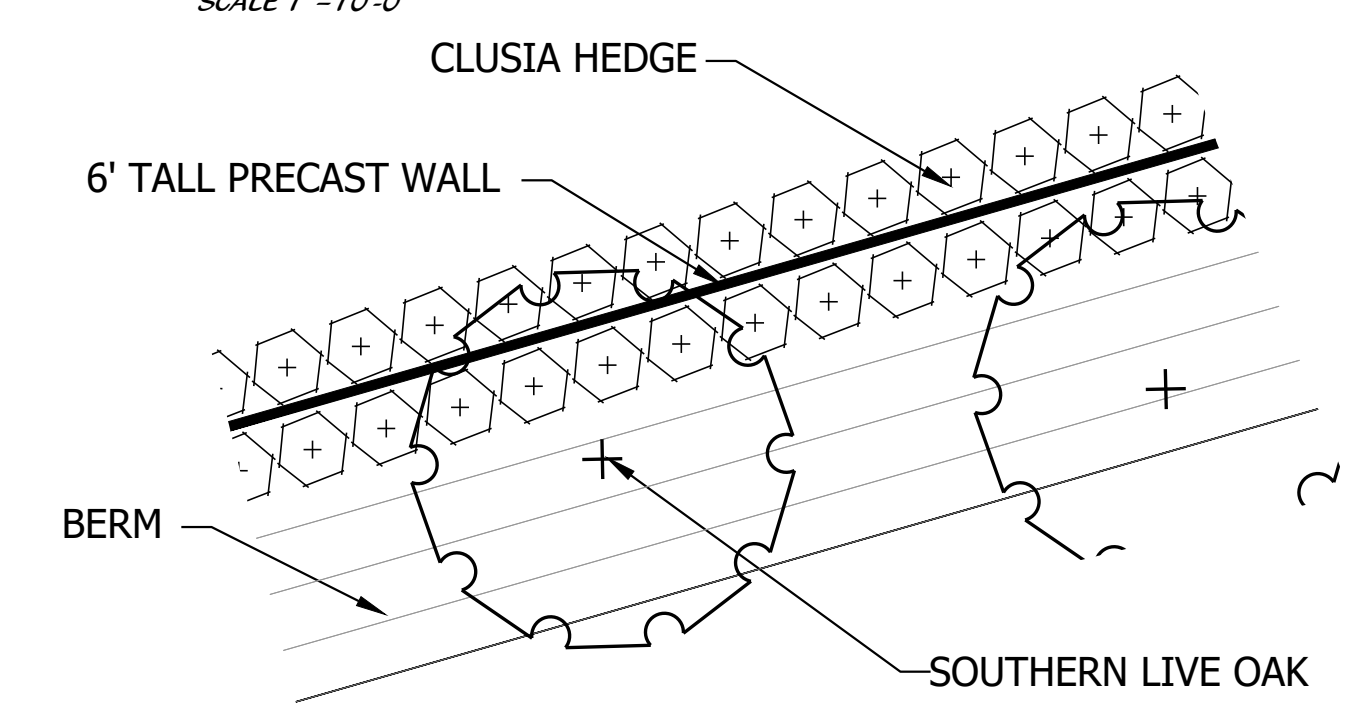
COMMON AREA 14
SCALE 1"=30'-0"



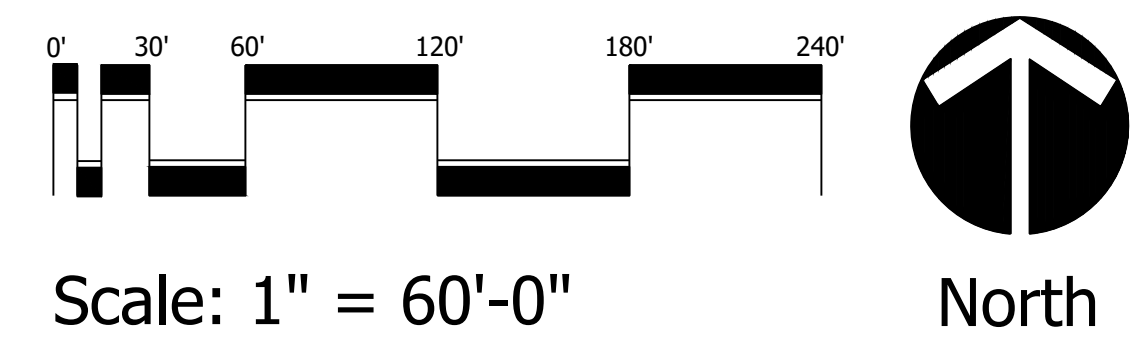
COMMON AREA 13
SCALE 1"=30'-0"



BERM PLANTINGS
SCALE 1"=10'-0"



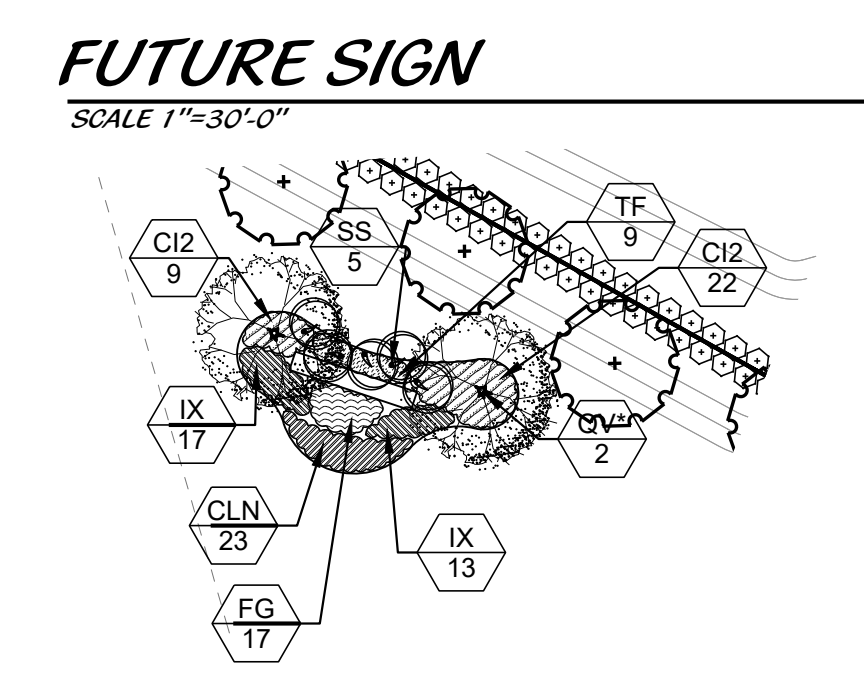
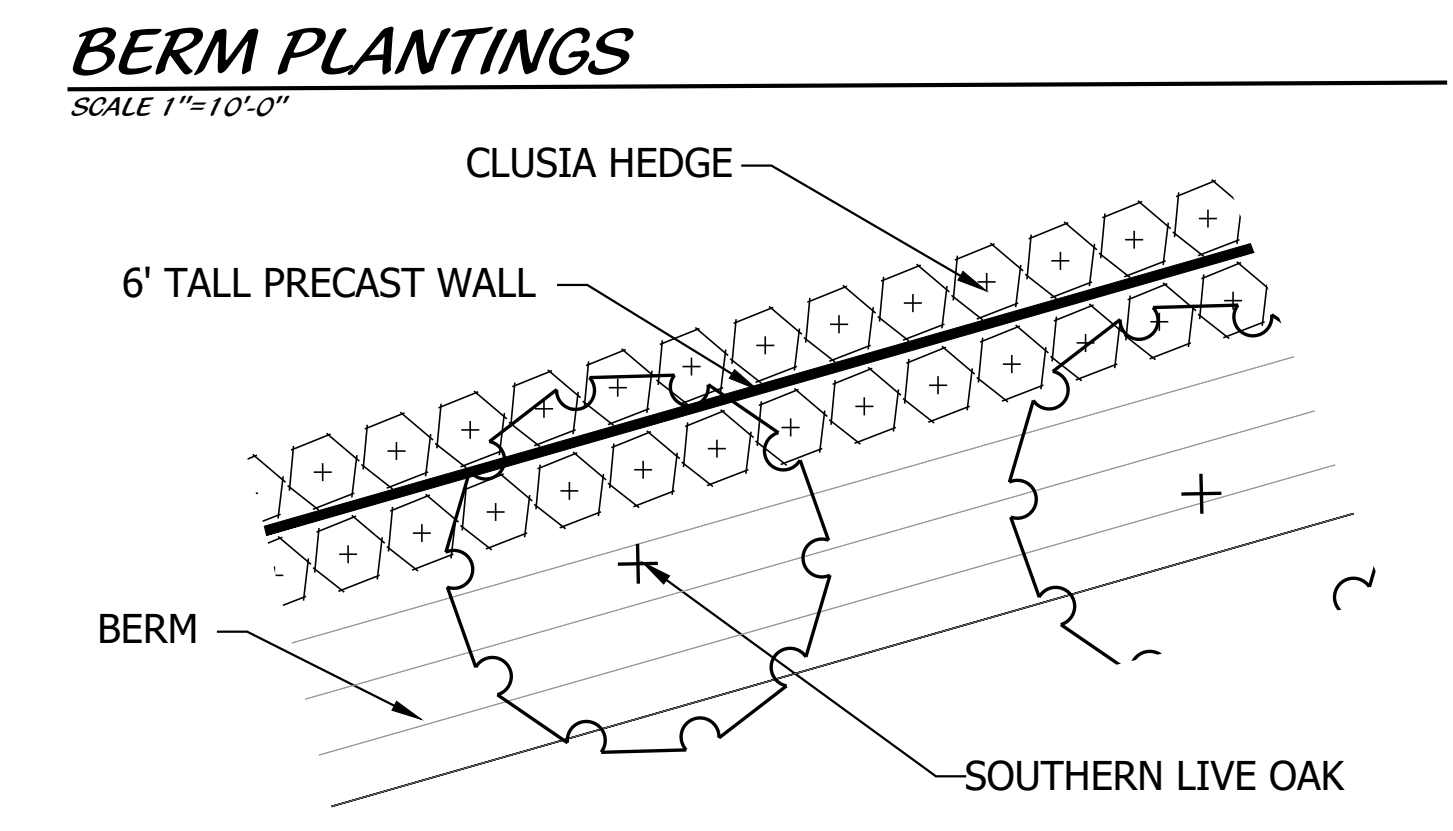
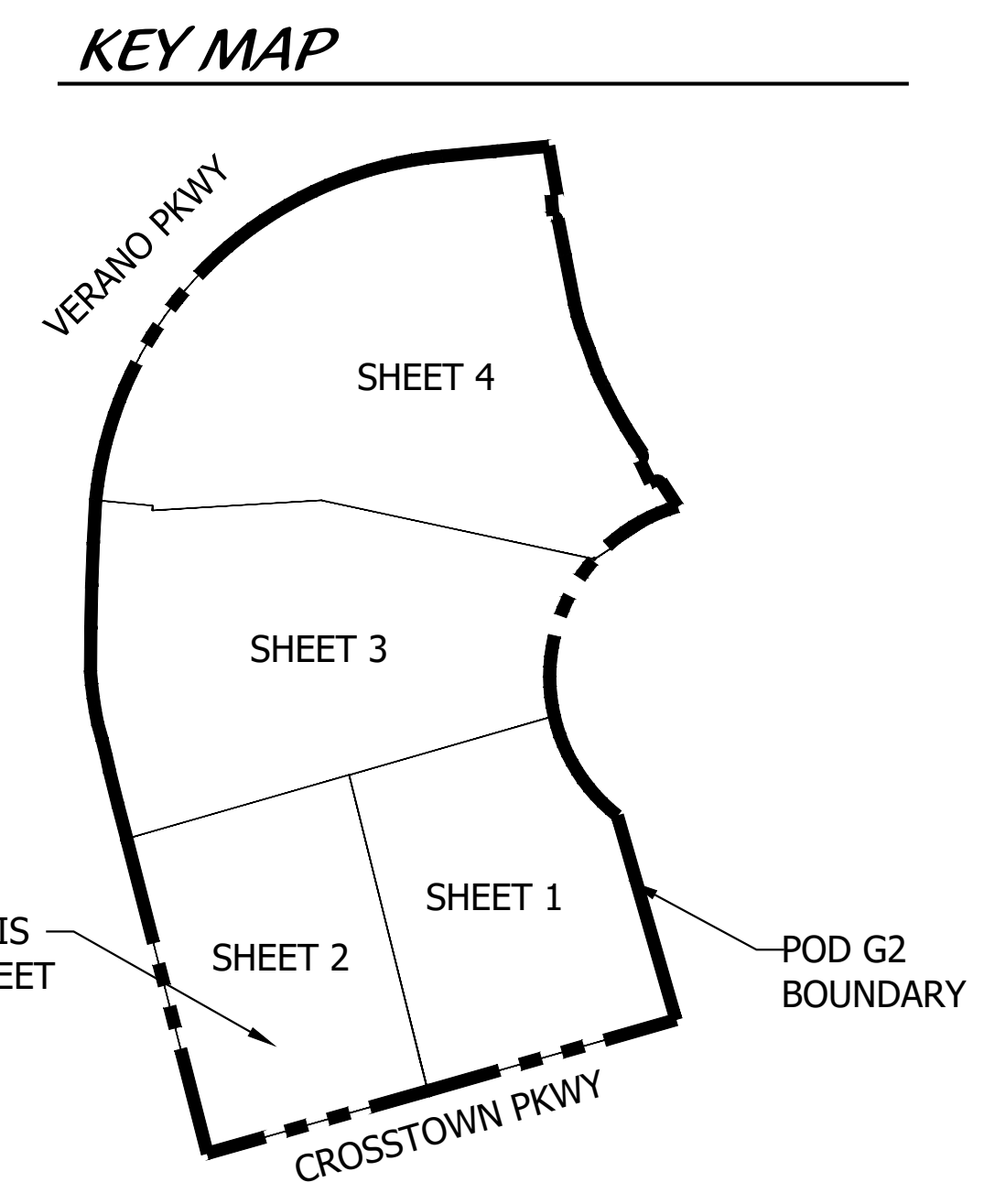
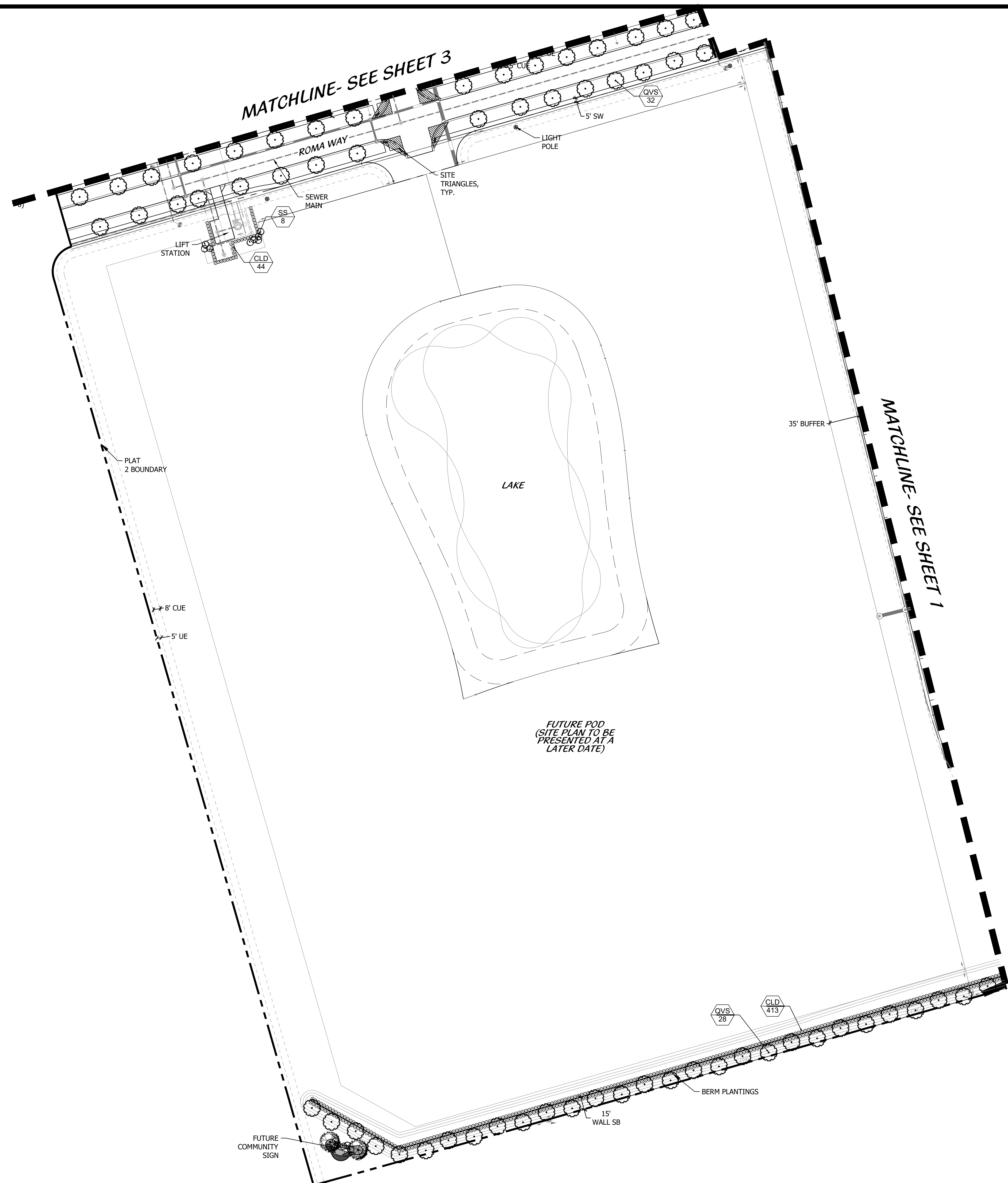
PSLUSD #11-652-36B
PSL PROJ# P22-019
POD G PLAT 2
LANDSCAPE PLAN



Cotleur & Hearing
Landscape Architects
Land Planners
Environmental Consultants
1934 Commerce Lane
Suite 1
Jupiter, Florida 33458
561.747.6336 · Fax 747.1377
www.cotleurhearing.com
Lic# LC-C000239

VERANO SOUTH POD G
Kolter Homes
Port St. Lucie, Florida

DESIGNED LAH
DRAWN LAH/ACE
APPROVED DTS
JOB NUMBER 18-1003.03
DATE 01-19-22
REVISIONS 02-23-22
05-24-22



PSLUSD #1 1-652-36B
 PSL PROJ# P22-019
 POD G PLAT 2
LANDSCAPE PLAN

Scale: 1" = 60'-0"

0' 30' 60' 120' 180' 240'

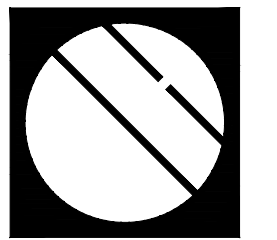
North


Cotleur & Hearing
 Landscape Architects
 Land Planners
 Environmental Consultants
 1934 Commerce Lane
 Suite 1
 Jupiter, Florida 33458
 561.747.6336 • Fax 747.1377
 www.cotleurhearing.com
 Lic# LC-C000239

VERANO SOUTH POD G
 Kolter Homes
 Port St. Lucie, Florida

DESIGNED	LAH
DRAWN	LAH/ACE
APPROVED	DTS
JOB NUMBER	18-1003.03
DATE	01-19-22
REVISIONS	02-23-22
	05-24-22

SHEET 2 OF 6
 © COTLEUR & HEARING, INC.
These drawings are the property of the architect and are not to be used for extensions or on other projects except by agreement in writing with the architect. Immediately report any discrepancies to the architect.



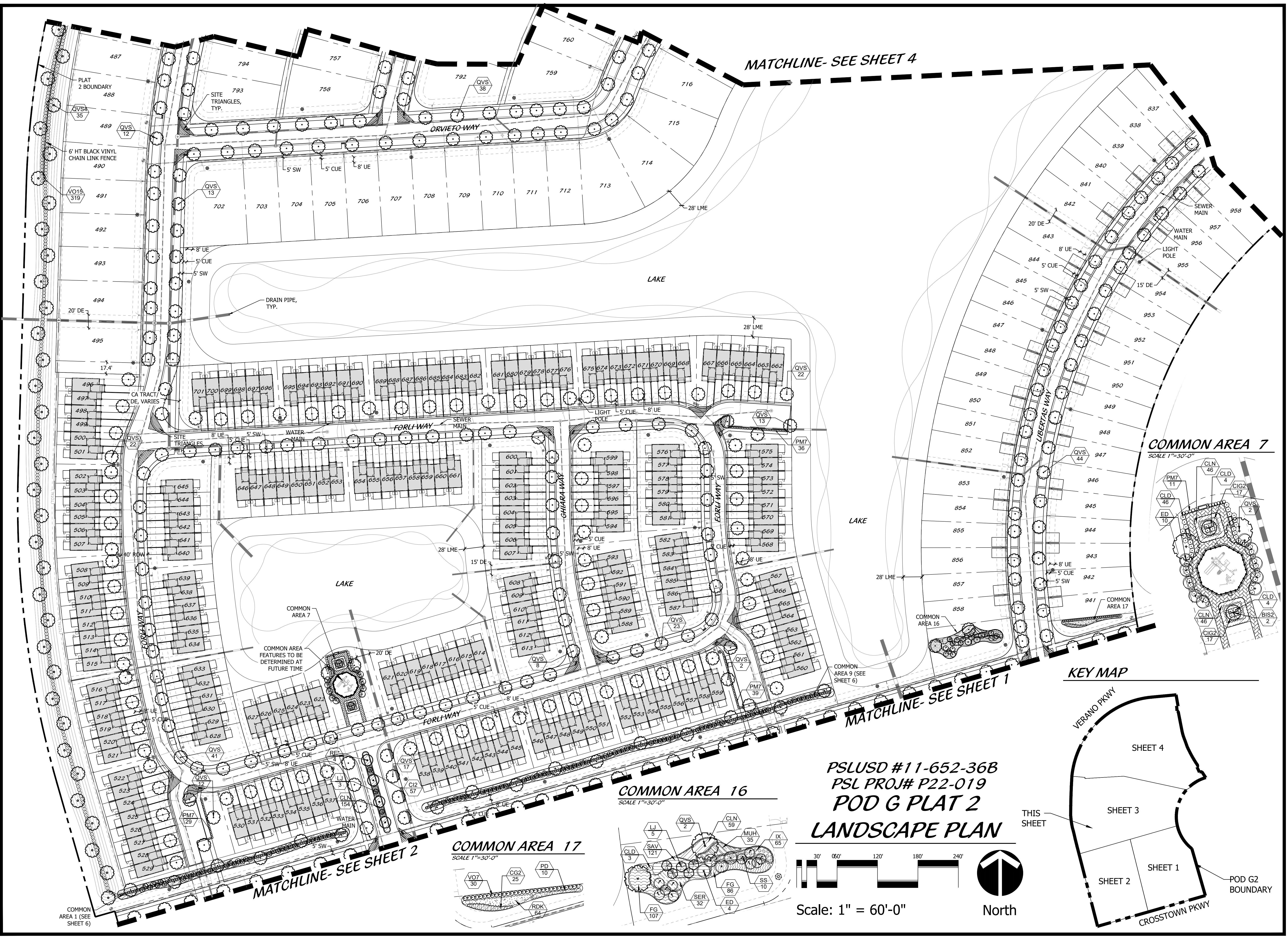
Cotleur & Hearing

Landscape Architects
Land Planners
Environmental Consultants

1934 Commerce Lane
Suite 1
Jupiter, Florida 33458
561.747.6336 · Fax 747.1377
www.cotleurhearing.com
Lic# LC-C000239

VERANO SOUTH POD G

Koiter Homes
Port St. Lucie, Florida



MATCHLINE- SEE SHEET 4

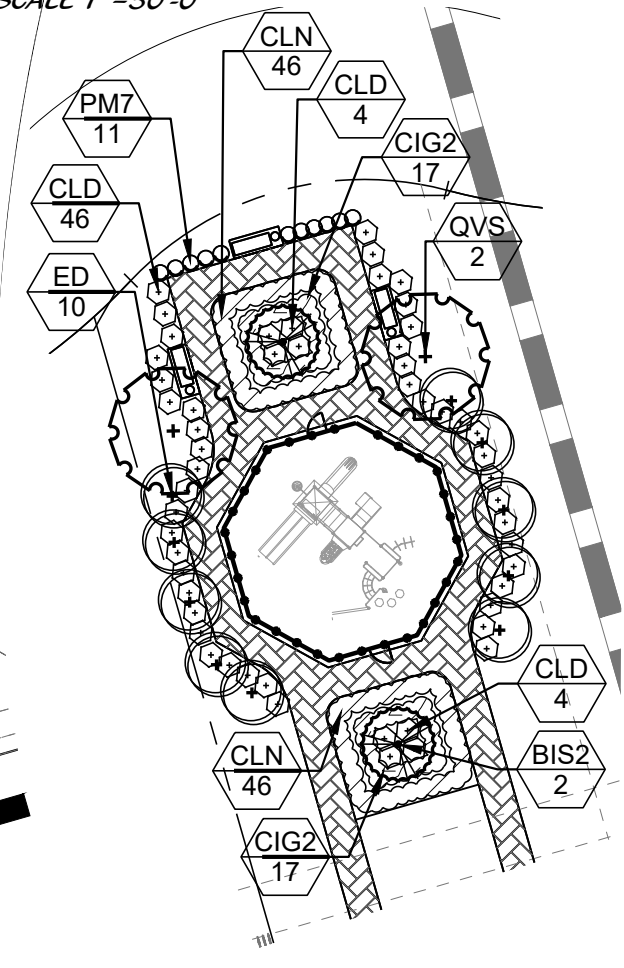
MATCHLINE- SEE SHEET 1

MATCHLINE- SEE SHEET 2

COMMON AREA 7
SCALE 1"=30'-0"

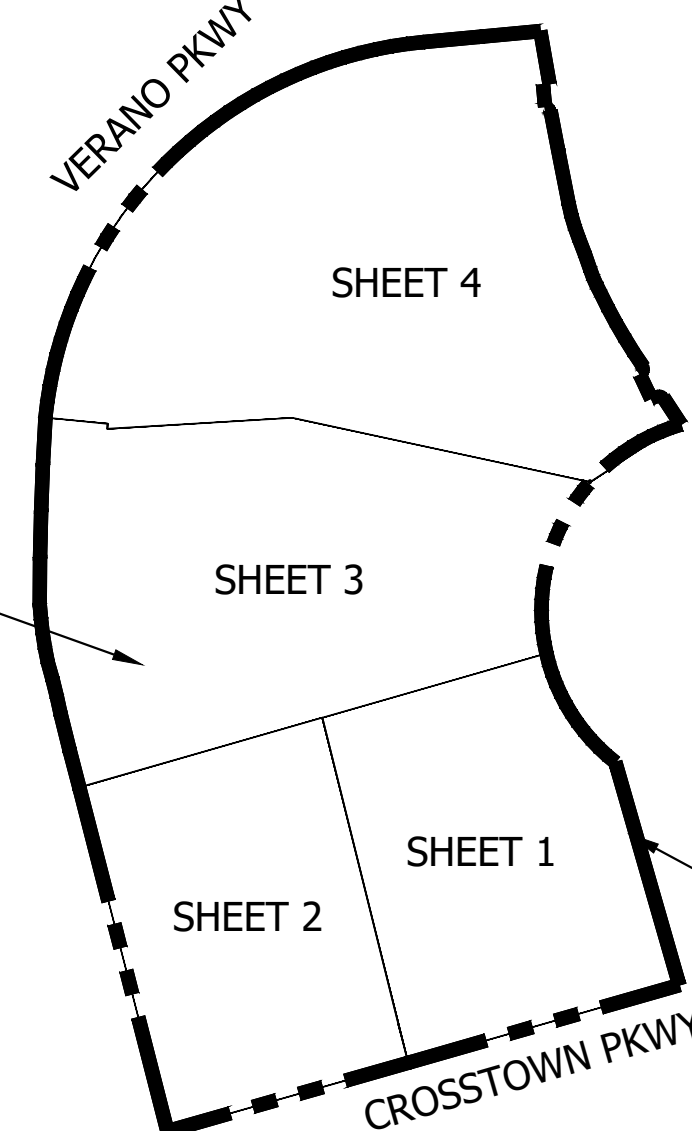
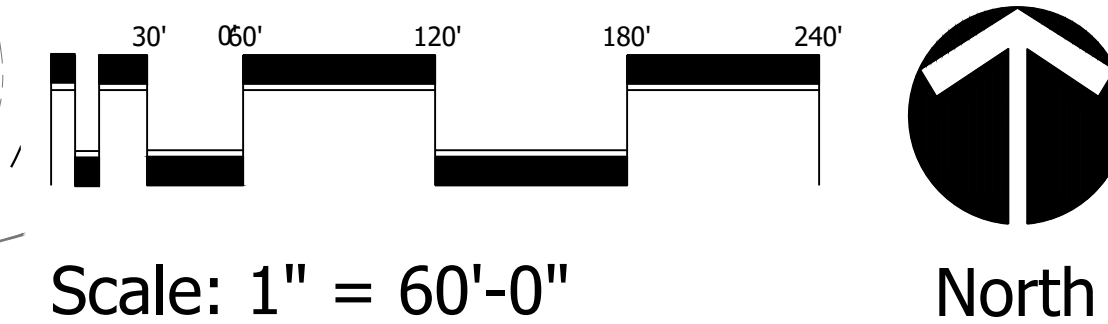
COMMON AREA 16
SCALE 1"=30'-0"

COMMON AREA 17
SCALE 1"=30'-0"



KEY MAP

PSLUSD #11-652-36B
PSL PROJ# P22-019
POD G PLAT 2
LANDSCAPE PLAN

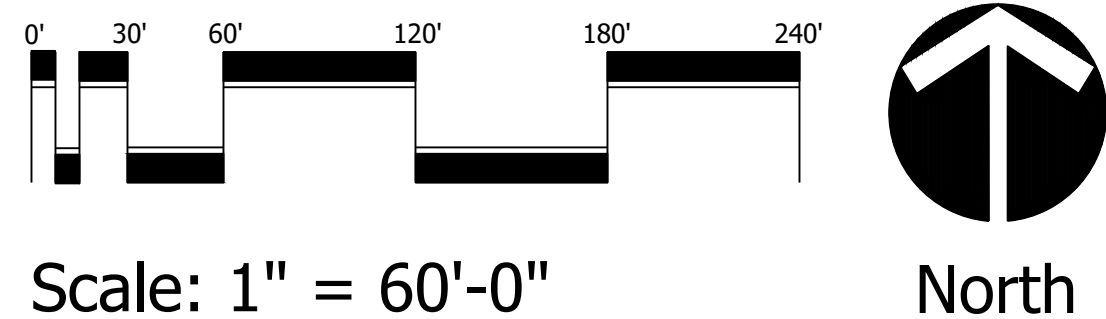


DESIGNED	LAH
DRAWN	LAH/ACE
APPROVED	DTS
JOB NUMBER	18-1003.03
DATE	01-19-22
REVISIONS	02-23-22
	05-24-22

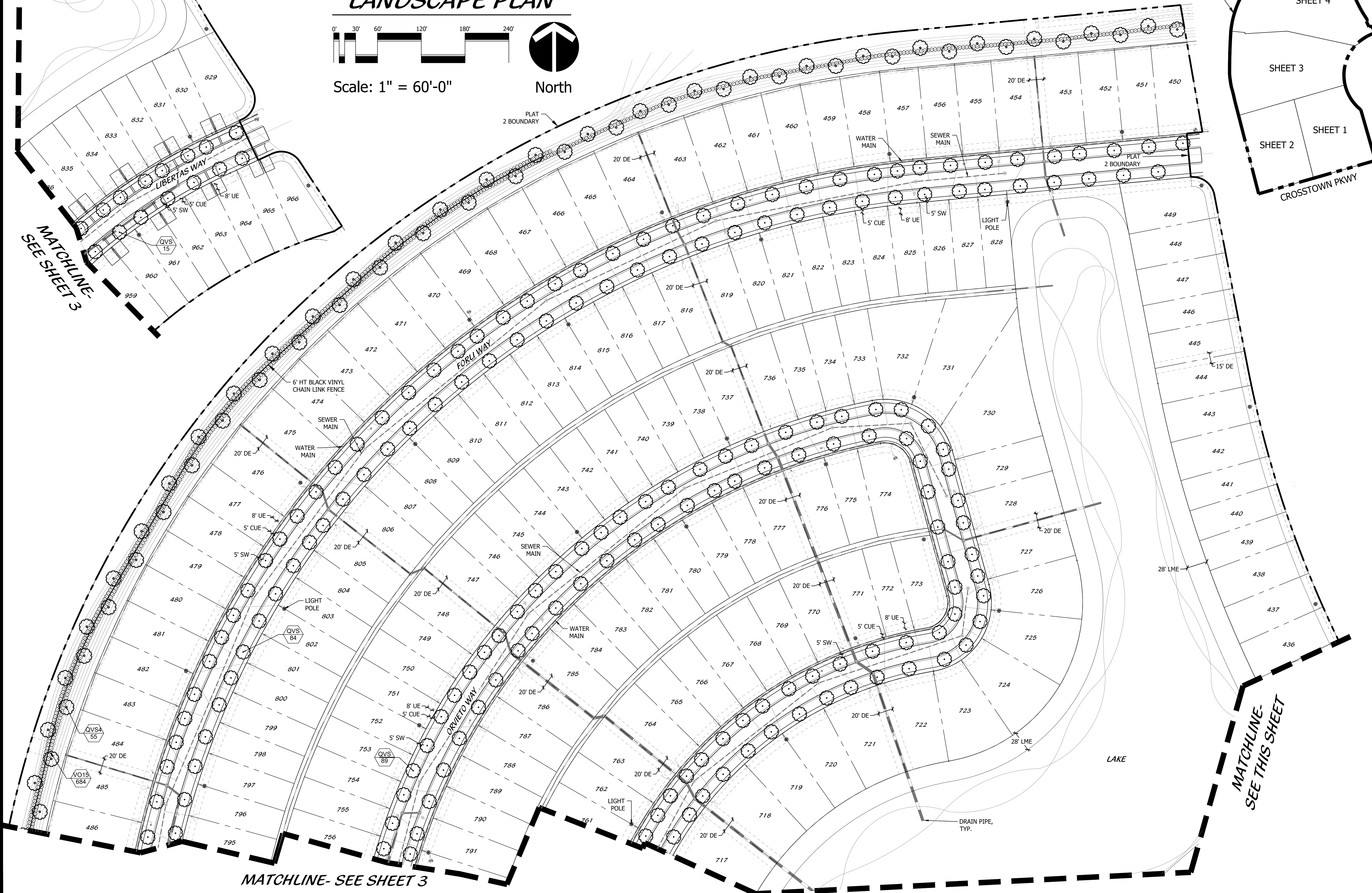
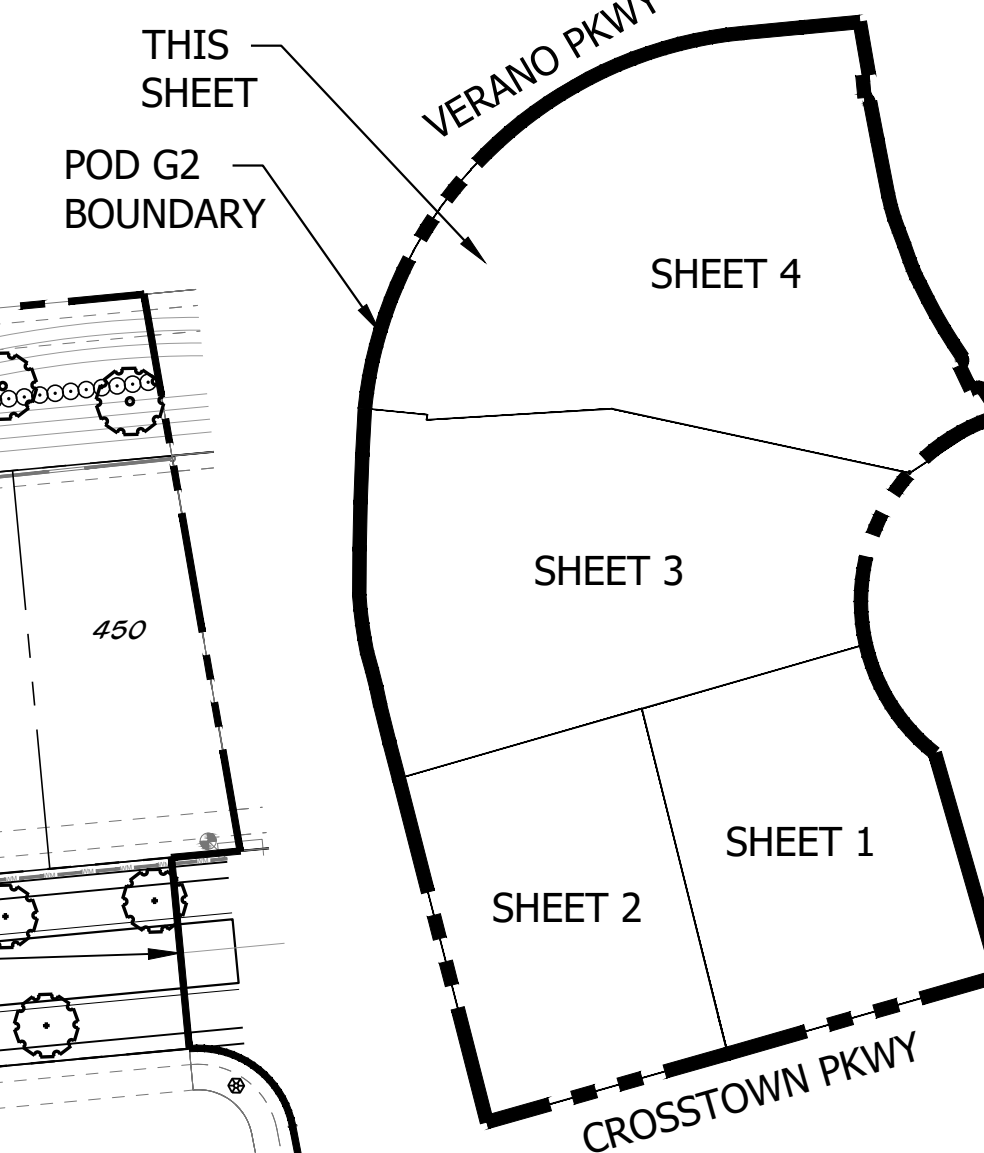
MATCHLINE-
SEE THIS SHEET

MATCHLINE-
SEE SHEET 3

PSLUSD #11-652-36B
PSL PROJ# P22-019
POD G PLAT 2
LANDSCAPE PLAN



KEY MAP



MATCHLINE- SEE SHEET 3

MATCHLINE-
SEE THIS SHEET



Cotleur & Hearing
Landscape Architects
Land Planners
Environmental Consultants
1934 Commerce Lane
Suite 1
Jupiter, Florida 33458
561.747.6336 · Fax 747.1377
www.cotleurhearing.com
Lic# LC-C000239

VERANO SOUTH POD G
Koiter Homes
Port St. Lucie, Florida

DESIGNED	LAH
DRAWN	LAH/ACE
APPROVED	DTS
JOB NUMBER	18-1003.03
DATE	01-19-22
REVISIONS	02-23-22
	05-24-22

LANDSCAPE SPECIFICATIONS

1. GENERAL LANDSCAPE REQUIREMENTS
 LANDSCAPE CONTRACT WORK INCLUDES, BUT IS NOT LIMITED TO, SOIL PREPARATION, FINE OR FINISH GRADING, FURNISHING AND INSTALLING PLANT MATERIAL, WATERING, STAKING, GUYING AND MULCHING.

PLANT SIZE AND QUALITY
 TREES, PALMS, SHRUBS, GROUNDCOVERS:
 PLANT SPECIES AND SIZES SHALL CONFORM TO THOSE INDICATED ON THE DRAWINGS. Nomenclature shall conform to standard plant names, 1942 edition. All nursery stock shall be in accordance with grades and standards for nursery plants parts 1 & II, latest edition published by the Florida Department of Agriculture and Consumer Services or unless specified otherwise. All plants shall be Florida grade number 1 or better as determined by the Florida Department of Agriculture and Consumer Services and favored in its development that first appearance is unquestionable and it is outstanding in superior form, number of branches and symmetry. All plants shall be freshly dug, sound, healthy, vigorous, well branched and free of disease and insect eggs and larvae and shall have adequate root systems. Trees and palms for planting rows shall be uniform in size and shape. All materials shall be subject to approval by the landscape architect. The plants furnished shall be normal for the variety and Florida number 1. Plants shall be pruned prior to delivery only upon the approval of the landscape architect.

All container grown material shall be healthy, vigorous, well-rooted plants and established in the container in which they are sold. The plants shall have tops of good quality and be in a healthy growing condition.

An established container grown plant shall be transplanted into a container and grown in that container sufficiently long enough for the new fibrous roots to have developed so that the root mass will retain its shape and hold together when removed from the container.

Mulch shall be shredded cypress mulch. All mulch is to be applied to a depth of 3" except for those specific situations shown below in sections 2,3 & 4.

Fertilizer in backfill mixture for all plants shall consist of milorganite activated sludge mixed with the backfill at a rate of not less than 10 lbs. per cubic yard.

Fertilizer for trees and shrubs may be tablet form or granular. Granular fertilizer shall be uniform in composition, dry and free-flowing. This fertilizer shall be delivered to the site in the original unopened bags. Each bag shall have the manufacturer's statement of analysis, and shall meet the following requirements: 16% nitrogen, 2% phosphorus, 12% potassium, plus iron. Tablet fertilizer (agripur or equal) in 21 gram size shall meet the following requirements: 20% nitrogen, 10% phosphorus and 5% potassium.

Fertilizer will be applied at the following rates:
 PLANT SIZE 16-7-12 AGRIFORM TABLETS* (21 GRAM)
 1 GAL 1/4 LB. 1
 3 GAL 1/3 LB. 3
 12 GAL 1/2 LB. 12
 1'-6" CALIPER 2 LBS./1" CALIPER 2 PER 1" CALIPER
 6" AND LARGER 3 LBS./1" CALIPER 2 PER 1" CALIPER
 (*) TABLETS TO BE INSTALLED IN TOP 6-8"

FLORIDA EAST COAST PALM SPECIAL SHALL BE APPLIED TO ALL PALMS AT INSTALLATION AT A RATE OF .5 LB. PER INCH OF TRUNK UNLESS OTHERWISE SPECIFIED.

Field grown trees and palms previously root pruned shall obtain a root ball with sufficient roots for continued growth without resulting shock.

Contractor shall not mark or scar trunk in any fashion.
 Plants shall be watered as necessary or within 24 hours after notification by the landscape architect.

The locations of plants, as shown in these plans, are approximate. The final locations may be adjusted to accommodate unforeseen field conditions. Major adjustments to the layout are to be approved by the landscape architect.

All plastic fabric shall be removed from plant material at time of installation.
 All trees must be staked as shown on the planting details within 24 hours of planting. Stakes to remain for a minimum of 9 months, but no longer than 18 months. Contractor is responsible for maintenance and removal of the stakes.

All trees must be pruned as per landscape architect's direction. Sabal palms may be hurricane cut.
 All shrubs, trees and ground cover will have improved soil, as per planting soil notes. The soil shall be placed in the hole during planting. Top dressing only is not acceptable.

Do not allow air pockets to form when backfilling. All trees shall be spiked in utilizing water and a tree bar.

The landscape contractor shall water, mulch, weed, prune, and otherwise maintain all plants, including sod, until completion of contract or acceptance by landscape architect. Settled plants shall be reset to proper grade, planting saucers restored, and defective work corrected.

The landscape contractor shall at all times keep the premises free from accumulation of waste materials or debris caused by his crew during the performance of the work. Upon completion of the work, the contractor shall promptly remove all waste materials, debris, unused plant material, empty plant containers and all equipment from the project site.

Upon completion of the work, the landscape contractor shall notify the landscape architect and request a final inspection. Any items that are judged incomplete or unacceptable by the landscape architect or owner's representative shall be promptly corrected by the landscape contractor.

The landscape contractor shall guarantee all plant material for a period of six (6) months from the date of conditional acceptance in writing from the landscape architect. At the time of conditional acceptance, the six (6) month period shall commence. Any materials which have died during this period shall be replaced with specimens that meet the minimum requirements called for on the drawings. The landscape contractor shall not be held responsible for the death or damage resulting from lightning, vandalism, and automobiles or from negligence by the owner. Contractor shall be responsible for watering and otherwise maintaining plants up to the conditional acceptance period, unless a written agreement with the landscape architect provides for a different arrangement.

All labor and material for soil amendments and fertilizer that is required to insure the successful establishment and survival of the proposed vegetation, as well as all the cost for the removal of unsuitable or excess backfill material, shall be included in the contractor's bid to perform the work represented in this plan set.

2. PLANTING TREES
 EXCAVATE PIT AS PER PLANTING DETAILS. COMPACT LAYER OF TOPSOIL IN PIT WITH A SLIGHTLY DISHED GRADE TO CENTER.
 BACKFILL AROUND BALL WITH TOPSOIL AND SLIGHTLY COMPACT. WATER THOROUGHLY AS LAYERS ARE PLACED TO ELIMINATE VOIDS AND AIR POCKETS. BUILD A 6" HIGH BERM OF TOPSOIL BEYOND EDGE OF EXCAVATION. APPLY 3" (AFTER SETTLEMENT) OF MULCH.

PRUNE TREE TO REMOVE DAMAGED BRANCHES, IMPROVE NATURAL SHAPE AND THIN OUT STRUCTURE. DO NOT REMOVE MORE THAN 15% OF BRANCHES. DO NOT PRUNE BACK TERMINAL LEAVERS.
 GUY AND STAKE TREE IN ACCORDANCE WITH THE STAKING DETAILS IMMEDIATELY AFTER PLANTING.

3. PLANTING SHRUBS
 LAYOUT SHRUBS TO CREATE A CONTINUOUS SMOOTH FRONT LINE AND FILL IN BEHIND.
 EXCAVATE PIT OR TRENCH TO 2 TIMES THE DIAMETER OF THE BALLS OR CONTAINERS OR 1'-0" WIDER THAN THE SPREAD OF ROOTS AND 3" DEEPER THAN REQUIRED FOR POSITIONING AT PROPER HEIGHT. COMPACT A LAYER OF TOPSOIL IN BOTTOM BEFORE PLACING PLANTS. BACKFILL AROUND PLANTS WITH PLANTING MIXTURE COMPACTED TO ELIMINATE VOIDS AND AIR POCKETS. FORM GRADE SLIGHTLY DISHED AND BERMED AT EDGES OF EXCAVATION. APPLY 3" OF MULCH.

PRUNE SHRUBS TO REMOVE DAMAGED BRANCHES, IMPROVE NATURAL SHAPE AND THIN OUT STRUCTURE. DO NOT REMOVE MORE THAN 15% OF BRANCHES.
4. PLANTING GROUND COVER
 LOOSEN SUBGRADE TO DEPTH OF 4" IN AREAS WHERE TOPSOIL HAS BEEN STRIPPED AND SPREAD SMOOTH.
 SPACE PLANTS AS OTHERWISE INDICATED. DIG HOLES LARGE ENOUGH TO ALLOW SPREADING OF ROOTS. COMPACT BACKFILL TO ELIMINATE VOIDS AND LEAVE GRADE SLIGHTLY DISHED AT EACH PLANT. WATER THOROUGHLY. APPLY 3" OF MULCH OVER ENTIRE PLANTING BED. LIFTING PLANT FOLIAGE ABOVE MULCH. PURPLE QUEEN GROUND COVER, IF SPECIFIED, SHALL ONLY RECEIVE 1" OF MULCH.

5. PLANTING LAWN
 SOODING: SOD TYPE SPECIFIED ON PLANT LIST SHALL BE MACHINE STRIPPED NOT MORE THAN 24 HOURS PRIOR TO LAYING.
 LOOSEN SUBGRADE TO DEPTH OF 4" AND GRADE WITH TOPSOIL EITHER PROVIDED ON SITE OR IMPORTED TO FINISH DESIGN ELEVATIONS. ROLL PREPARED LAWN SURFACE. WATER THOROUGHLY, BUT DO NOT CREATE MUDDY SOIL CONDITION.

FERTILIZE SOIL AT THE RATE OF APPROXIMATELY 10 LBS. PER 1,000 S.F. SPREAD FERTILIZER OVER THE AREA TO RECEIVE GRASS BY USING AN APPROVED DISTRIBUTOR CALIBRATED TO DISTRIBUTE THE APPROPRIATE QUANTITY. DO NOT FERTILIZE WHEN WIND VELOCITY EXCEEDS 15 M.P.H. THOROUGHLY MIX FERTILIZER INTO THE TOP 2" OF TOPSOIL.

LAY SOD STRIPS WITH TIGHT JOINTS. DO NOT OVERLAP. STAGGER STRIPS TO OFFSET JOINTS IN ADJACENT COURSES. WORK SIFTED SOIL MIX INTO MINOR CRACKS BETWEEN PIECES OF SOD AND REMOVE EXCESS SOIL DEPOSITS FROM SODDED AREAS. SOD ON SLOPES GREATER THAN 3:1 SHALL BE STAKED IN PLACE. ROLL OR STAMP LIGHTLY AND WATER THOROUGHLY WITH A FINE SPRAY IMMEDIATELY AFTER PLANTING.

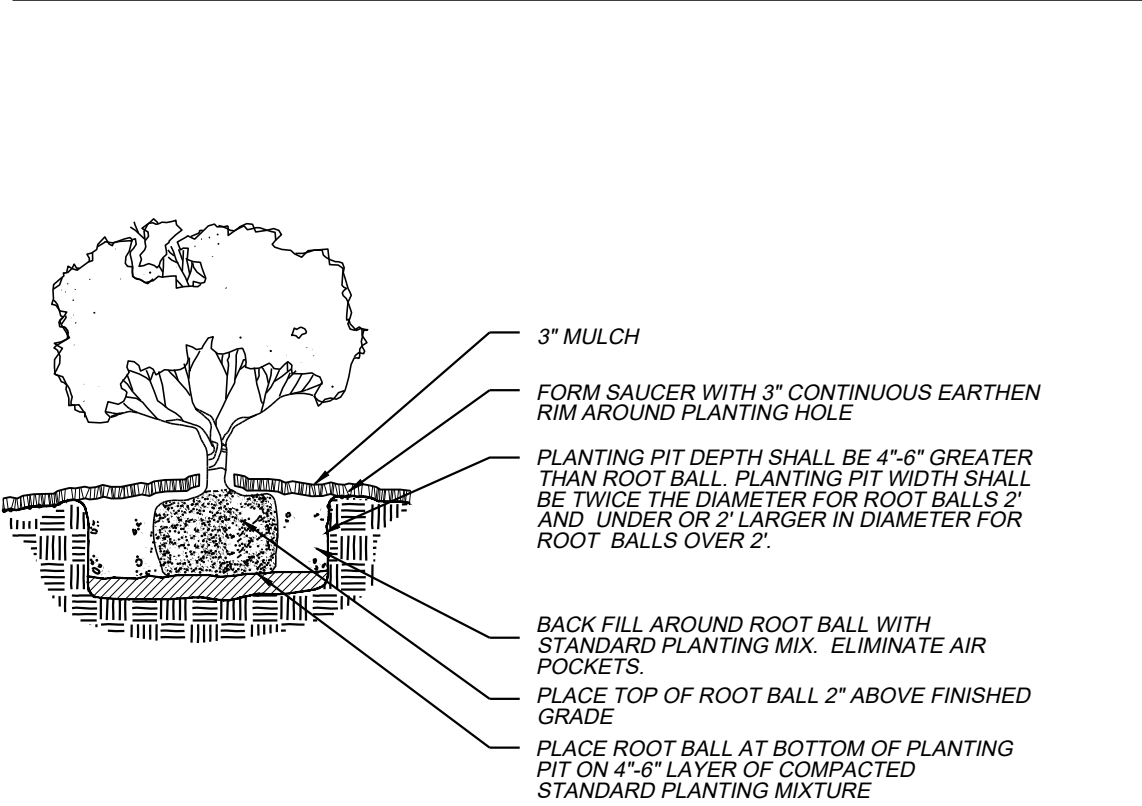
6. MISCELLANEOUS LANDSCAPE WORK
LANDSCAPE MAINTENANCE
 MAINTAIN LANDSCAPE WORK UNTIL FINAL ACCEPTANCE IS ISSUED BY THE OWNER'S REPRESENTATIVE. INCLUDE WATERING, WEEDING, CULTIVATING, RESTORATION OF GRADE, MOWING AND TRIMMING OF GRASS, PRUNING TREES AND SHRUBS, PROTECTION FROM INSECTS AND DISEASES, FERTILIZING AND SIMILAR OPERATIONS AS NEEDED TO INSURE NORMAL GROWTH AND GOOD HEALTH FOR LIVE PLANT MATERIAL.

PLANT MATERIAL SUBSTITUTION
 NO SUBSTITUTION OF PLANT MATERIAL, TYPE OR SIZES WILL BE PERMITTED WITHOUT AUTHORIZATION FROM THE LANDSCAPE ARCHITECT.

PLANTING BED PREPARATION
 ALL PLANTING BEDS SHALL BE PROPERLY PREPARED PRIOR TO THE COMMENCEMENT OF ANY PLANTING. PLANTING AREAS, INCLUDING LAWNS SHALL BE FREE OF ALL WEEDS AND NUISANCE VEGETATION. IF TORPEDO GRASS (PANICUM REPENS) IS PRESENT OR ENCOUNTERED DURING PLANTING, THE LANDSCAPE CONTRACTOR SHALL STOP ALL PLANTING UNTIL IT CAN BE DEMONSTRATED THAT IT HAS BEEN COMPLETELY REMOVED OR ERADICATED. THERE SHALL BE NO EXCEPTIONS TO THIS PROVISION.

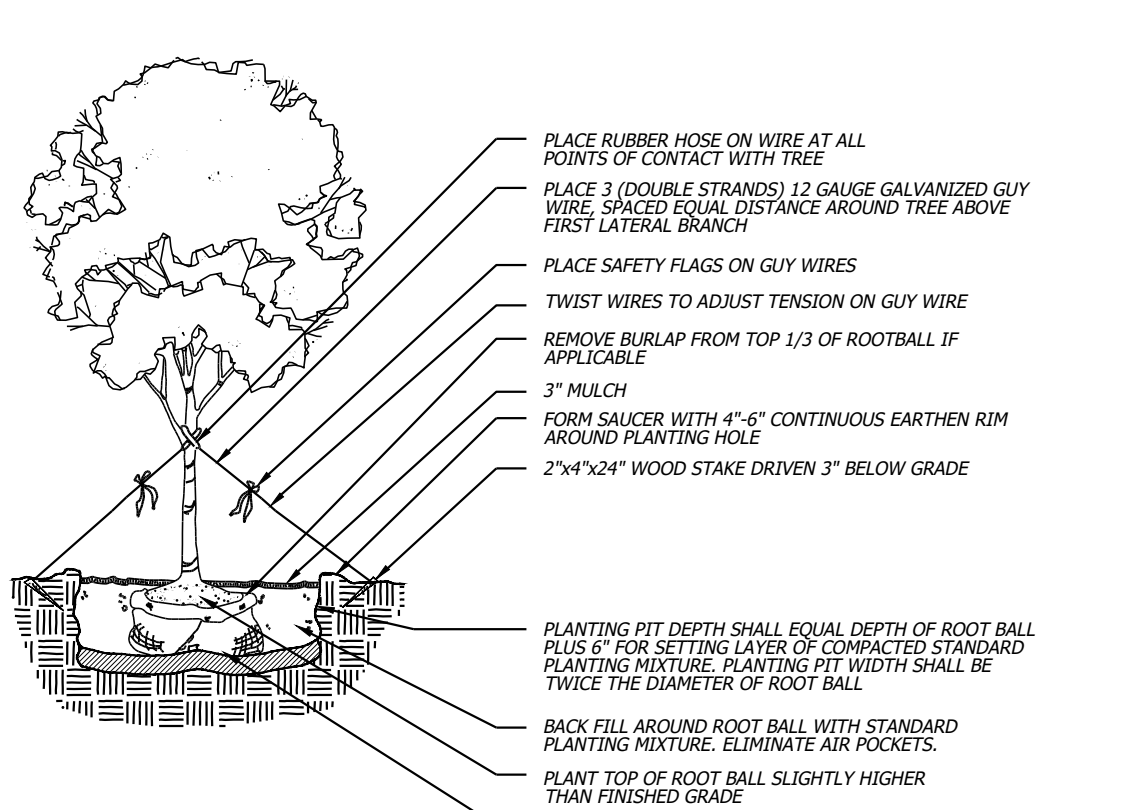
All landscape islands and beds will be free of shell rock and construction debris and will be excavated to a depth of 30 inches or to clean, native soil and filled with the specified backfill mixture.

PLANTING DETAILS



SHRUB/GROUNDCOVER PLANTING DETAIL

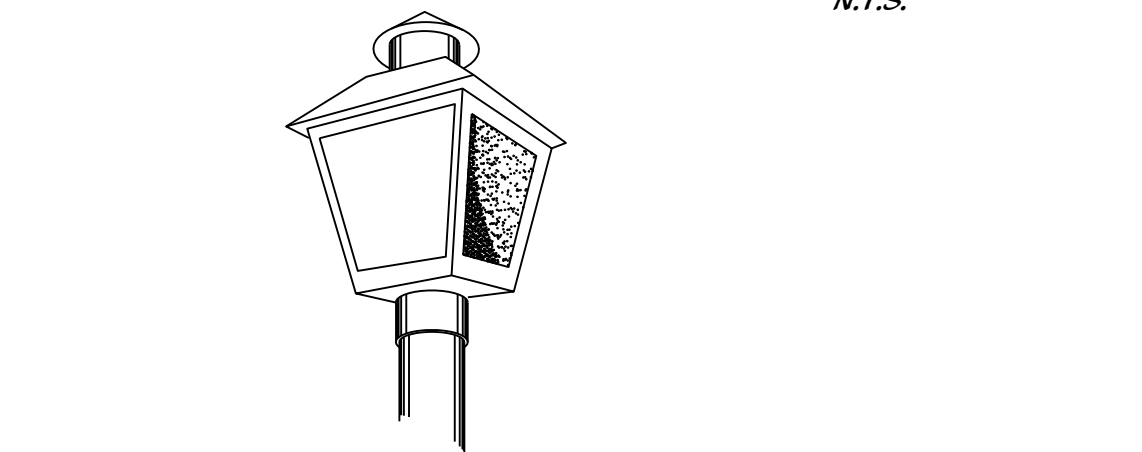
NTS



LARGE TREE PLANTING DETAIL

NTS

COACH LAMP (STREETLIGHTS)



COACH LAMP (STREETLIGHTS)

NTS

LANDSCAPE NOTES

ALL LANDSCAPING AND SITE IMPROVEMENTS SHALL CONFORM TO ALL APPLICABLE PROVISIONS OF THE CITY OF PORT ST. LUCIE CHAPTER 153, LANDSCAPE AND LAND CLEARING CODE, CURRENT ADDITION AND ANY OTHER APPLICABLE CITY REGULATIONS.

NO LANDSCAPING SHALL BE LOCATED WITHIN 10' OF A CITY LINE OR APPURTENANCE. ALL OTHER UTILITIES SHALL BE A MINIMUM OF 5' HORIZONTAL SEPARATION FROM CITY UTILITY MAINS FOR PARALLEL INSTALLATIONS AND A MINIMUM OF 18" BELOW CITY UTILITY MAINS. (ALL MEASUREMENTS ARE TAKEN FROM OUTSIDE TO OUTSIDE)

NO LANDSCAPING SHALL BE PLACED IN A MANNER THAT WOULD CREATE CONFLICTS WITH THE INTENDED OPERATION AND MAINTENANCE OF ANY EXISTING UTILITY.

ST. AUGUSTINE SOD WILL BE UTILIZED FOR ALL TURF AREAS, EXCEPT AS NOTED. BAHIA SOD WILL BE UTILIZED IN DRY RETENTION AREAS AND IN AREAS OF EXISTING TREES TO REMAIN.

ALL TREES PLANTED UNDER OR ADJACENT TO FPL POWERLINES WILL COMPLY WITH THE FPL "RIGHT TREE, RIGHT PLACE" GUIDELINES.

GENERAL LANDSCAPE NOTES:
 1. NO TREE OR OTHER INTRUSIVE ROOT PLANTINGS SHALL BE LOCATED WITHIN 10' OF A CITY UTILITY MAIN. ALL OTHER UTILITIES SHALL BE A MINIMUM OF 5' HORIZONTAL SEPARATION FROM CITY UTILITY MAINS FOR PARALLEL INSTALLATIONS AND A MINIMUM OF 18" BELOW CITY UTILITY MAINS. (ALL MEASUREMENTS ARE TAKEN FROM OUTSIDE TO OUTSIDE).

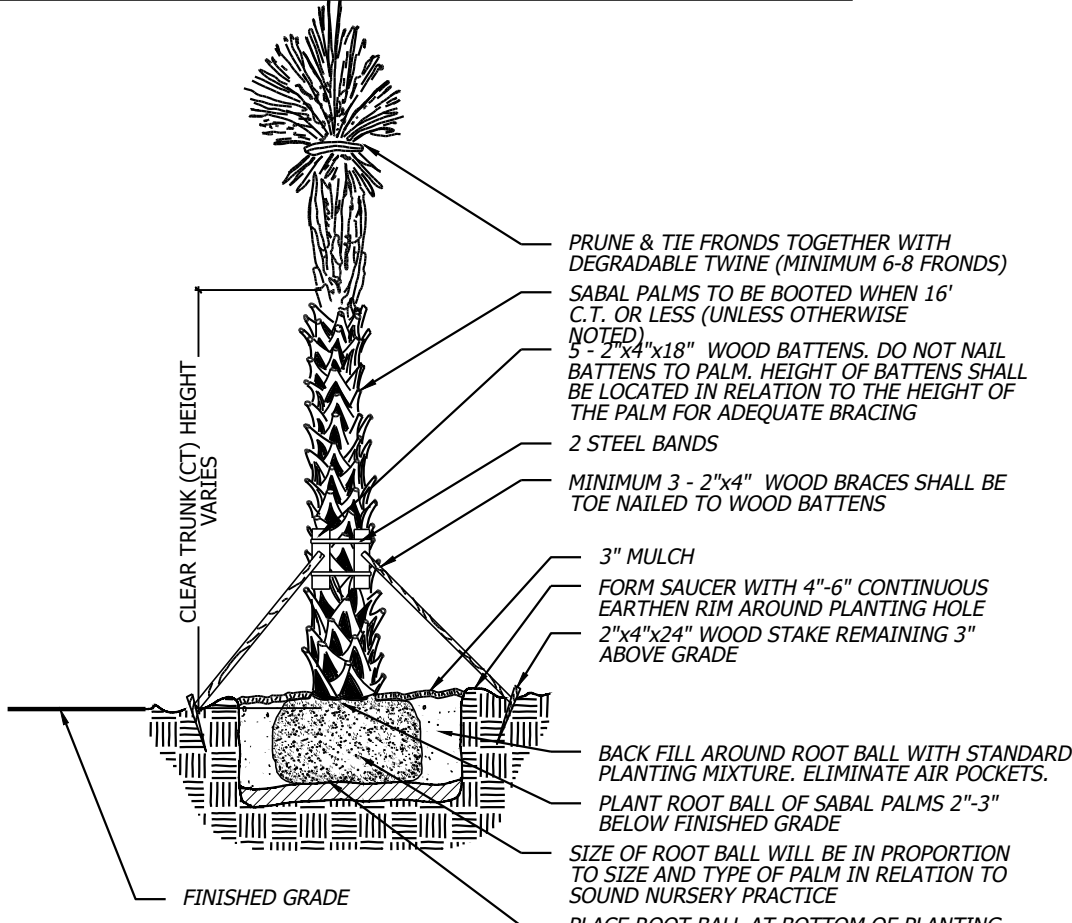
2. NO LANDSCAPING SHALL BE PLACED IN A MANNER THAT WOULD CREATE CONFLICTS WITH THE INTENDED OPERATION AND MAINTENANCE OF ANY EXISTING OR PROPOSED WATER/WASTEWATER UTILITY LINES.

3. ALL LANDSCAPE MATERIAL TO BE FL NO. 1.
 4. ALL LANDSCAPING MEETS FOOT CLEAR ZONE AND SIGHT DISTANCE CRITERIA.

5. NO LANDSCAPING SHALL BE PLANTED IN SUCH A MANNER AS TO ADVERSELY AFFECT UTILITY INSTALLATION, OPERATION AND MAINTENANCE.
 6. BERMS AND STRUCTURAL LANDSCAPE FEATURES SUCH AS ROCK FOUNDATIONS, SCULPTURE, DECORATIVE WALL AND TREE WALLS AND GENERALLY NOT ALLOWED IN UTILITY EASEMENTS, BUT MAY BE REVIEWED ON A CASE BY CASE BASIS.

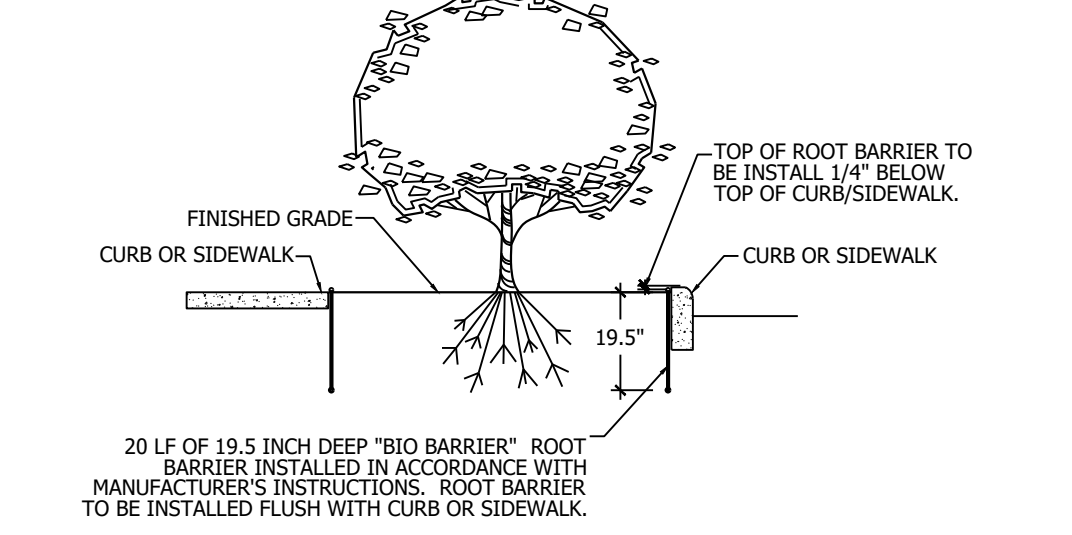
7. ALL MEASUREMENTS ARE FROM OUTSIDE TO OUTSIDE, NOT CENTERLINE TO CENTERLINE. EXAMPLE: OUTSIDE OF PIPE TO NEAREST POINT ON TREE TRUNK.
 8. TREES SHALL NOT BE PLANTED WITHIN 10 FEET OF ANY PSLUSD MAINS OR APPURTENANCES.

9. NO LANDSCAPING OTHER THAN SOD GRASSES MAY BE PLANTED WITHIN A 5' RADIUS MAINTENANCE AREA OF ANY PSLUSD APPURTENANCE SUCH AS WATER METERS, BACKFLOW DEVICES, FIRE HYDRANTS, SANITARY SEWER CLEANOUTS, AND MANHOLES, AIR RELEASE VALVES, ETC.
 10. ALL LANDSCAPING WITHIN PORT ST. LUCIE UTILITY SYSTEMS DEPARTMENT (PSLUSD) UTILITY EASEMENTS SHALL COMPLY WITH PSLUSD TECHNICAL SPECIFICATIONS, POLICIES, AND CODES. TREES SHALL NOT BE PLANTED WITHIN TEN (10) FEET OF ANY PSLUSD UNDERGROUND INFRASTRUCTURE.



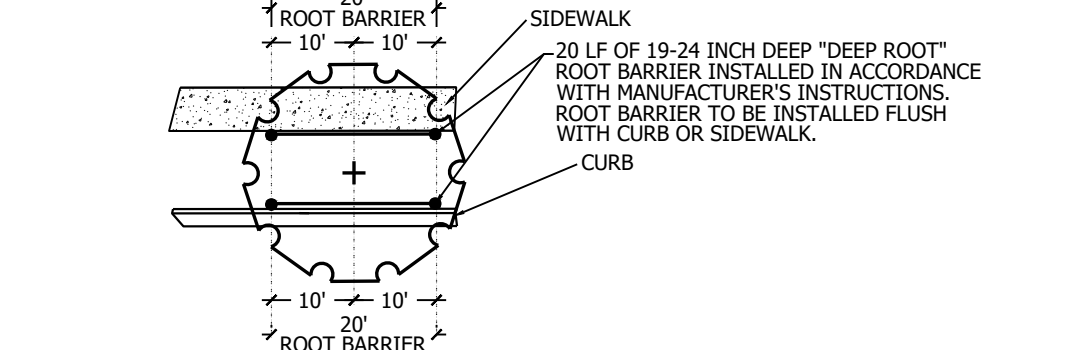
PALM PLANTING DETAIL

NTS



ROOT BARRIER DETAIL SECTION VIEW

NTS



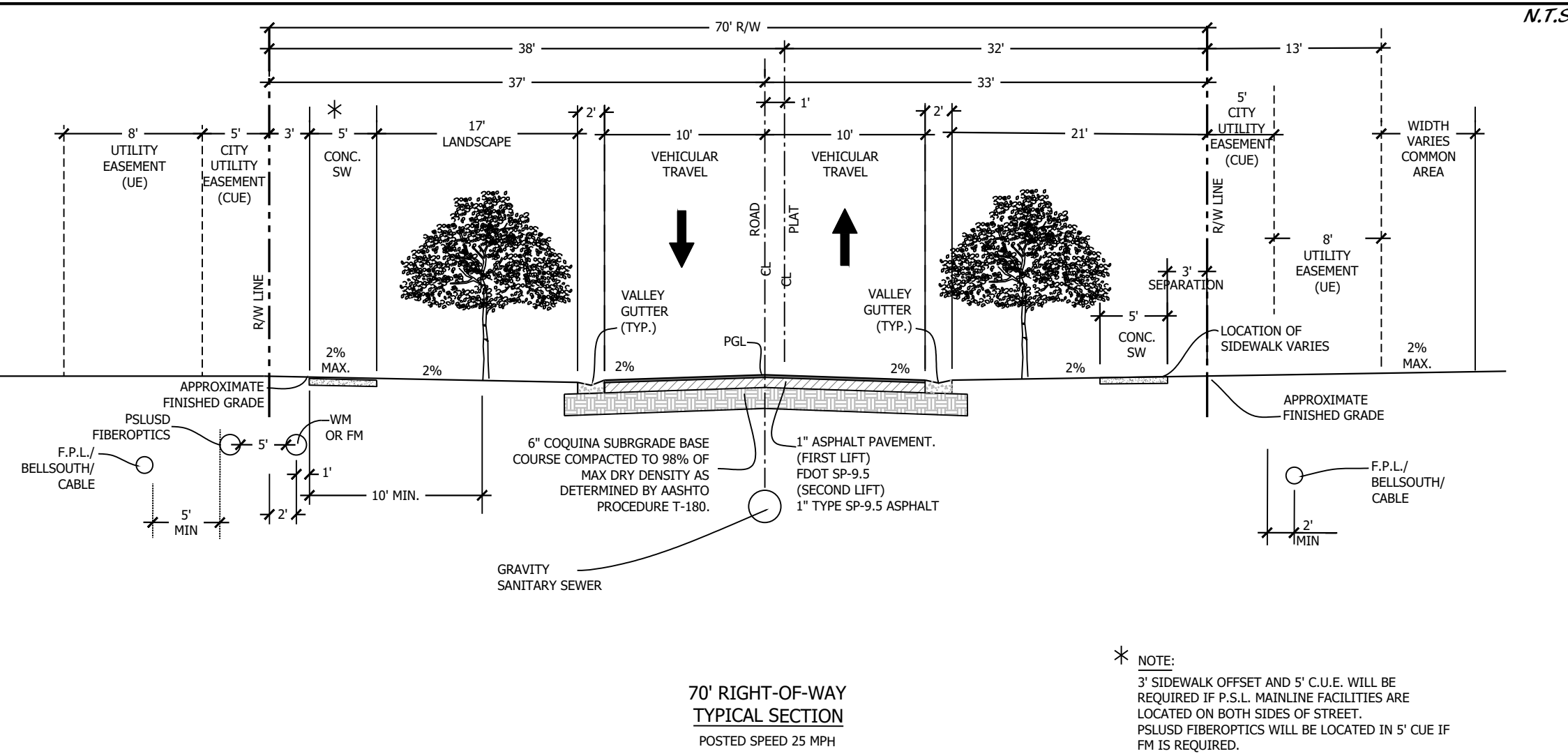
ROOT BARRIER DETAIL PLAN VIEW

NTS

THE CITY OF PSL WILL ALLOW STREET TREES WITHOUT ROOT BARRIERS AS LONG AS THEY ARE A MINIMUM OF 4 FEET FROM THE EDGE OF BOTH THE SIDEWALK AND CURB. THIS MEANS THE TREE LAWN MUST BE NO LESS THAN 8".

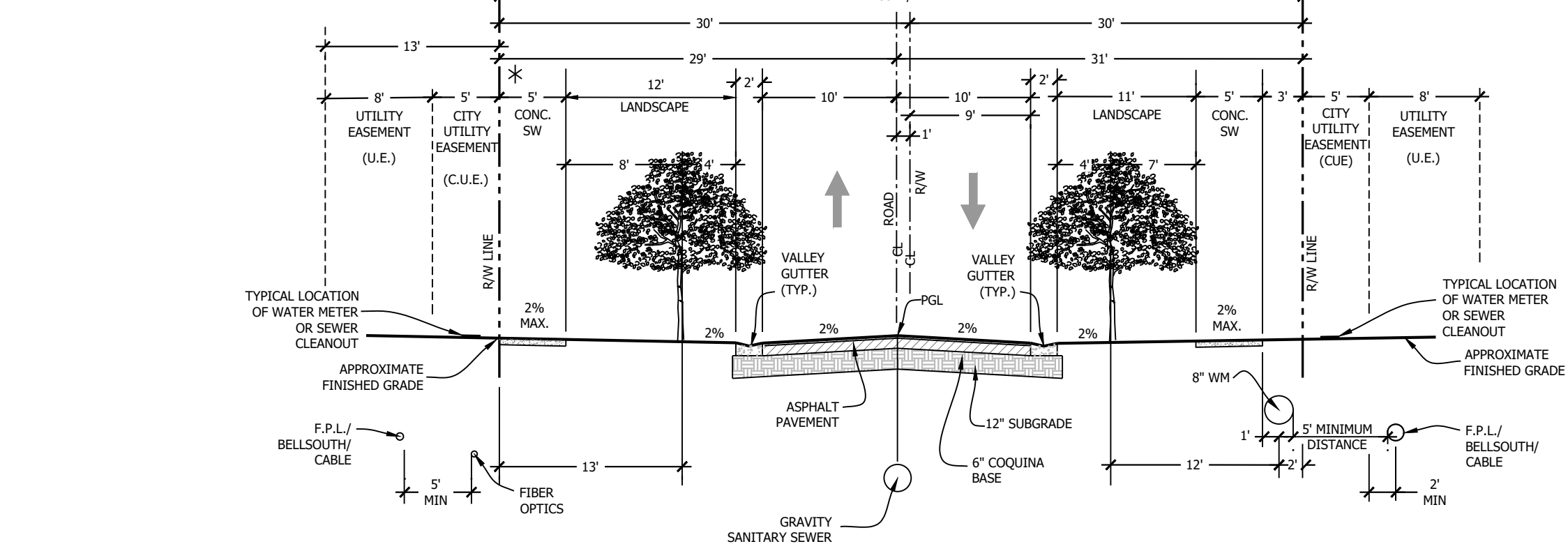
ROOT BARRIER SHALL BE USED WHEN A STREET TREE IS LESS THAN 4" FROM THE EDGE OF A SIDEWALK AND/OR LESS THAN 4" FROM THE EDGE OF A CURB. (MEASUREMENT IS FROM OUTSIDE TO OUTSIDE)

TYPICAL 70' (A) RIGHT-OF-WAY SECTION



TYPICAL 70' (A) RIGHT-OF-WAY SECTION

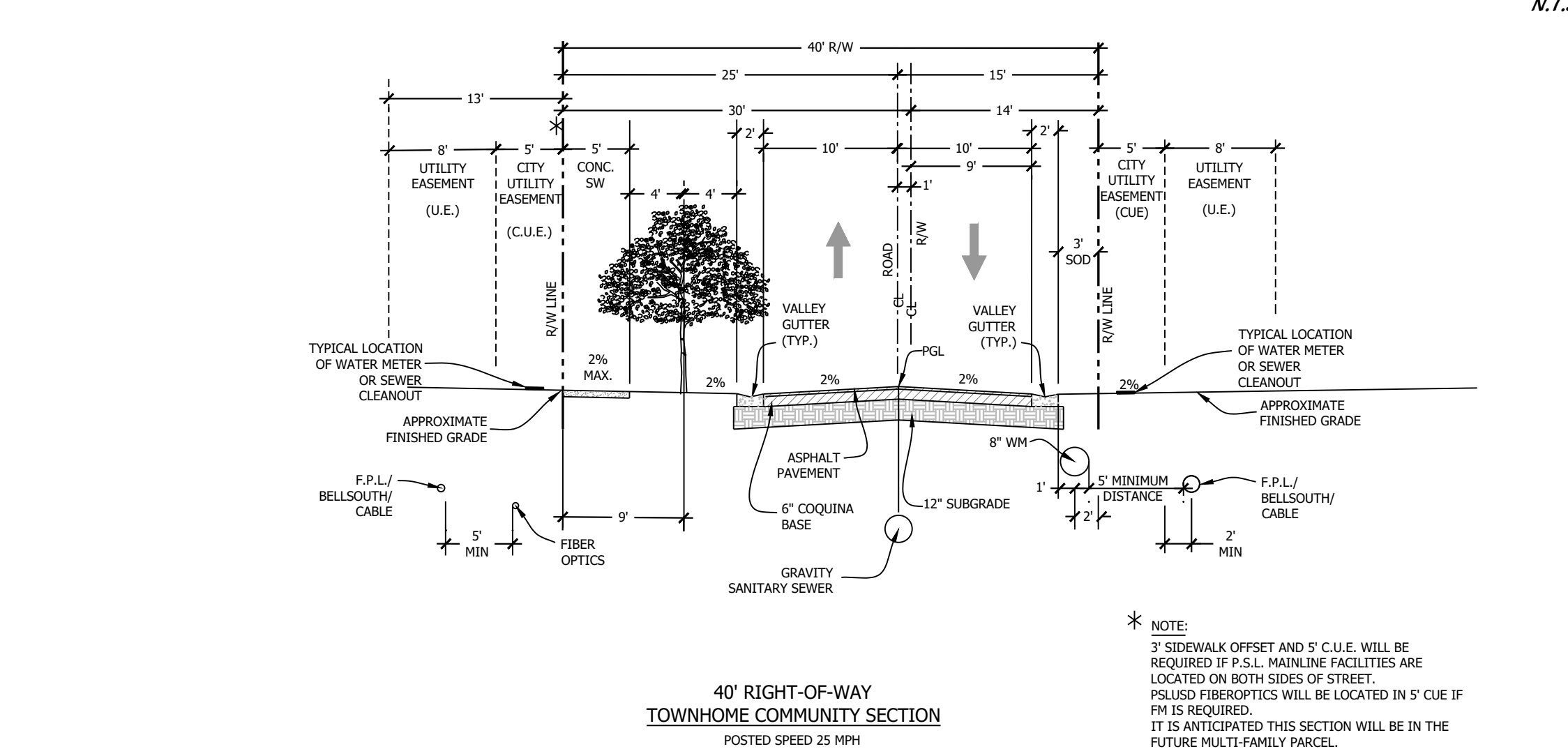
NTS



TYPICAL 60' RIGHT-OF-WAY SECTION

NTS

TYPICAL 40' RIGHT-OF-WAY SECTION



TYPICAL 40' RIGHT-OF-WAY SECTION

NTS

PSLUSD #11-652-368
 PSL PROJ# P22-019
 POD G PLAT 2
LANDSCAPE DETAILS

Cotleur & Hearing
 Landscape Architects
 Land Planners
 Environmental Consultants
 1934 Commerce Lane
 Suite 1
 Jupiter, Florida 33458
 561.747.6336 • Fax 747.1377
 www.cotleurhearing.com
 Lic# LC-C000239

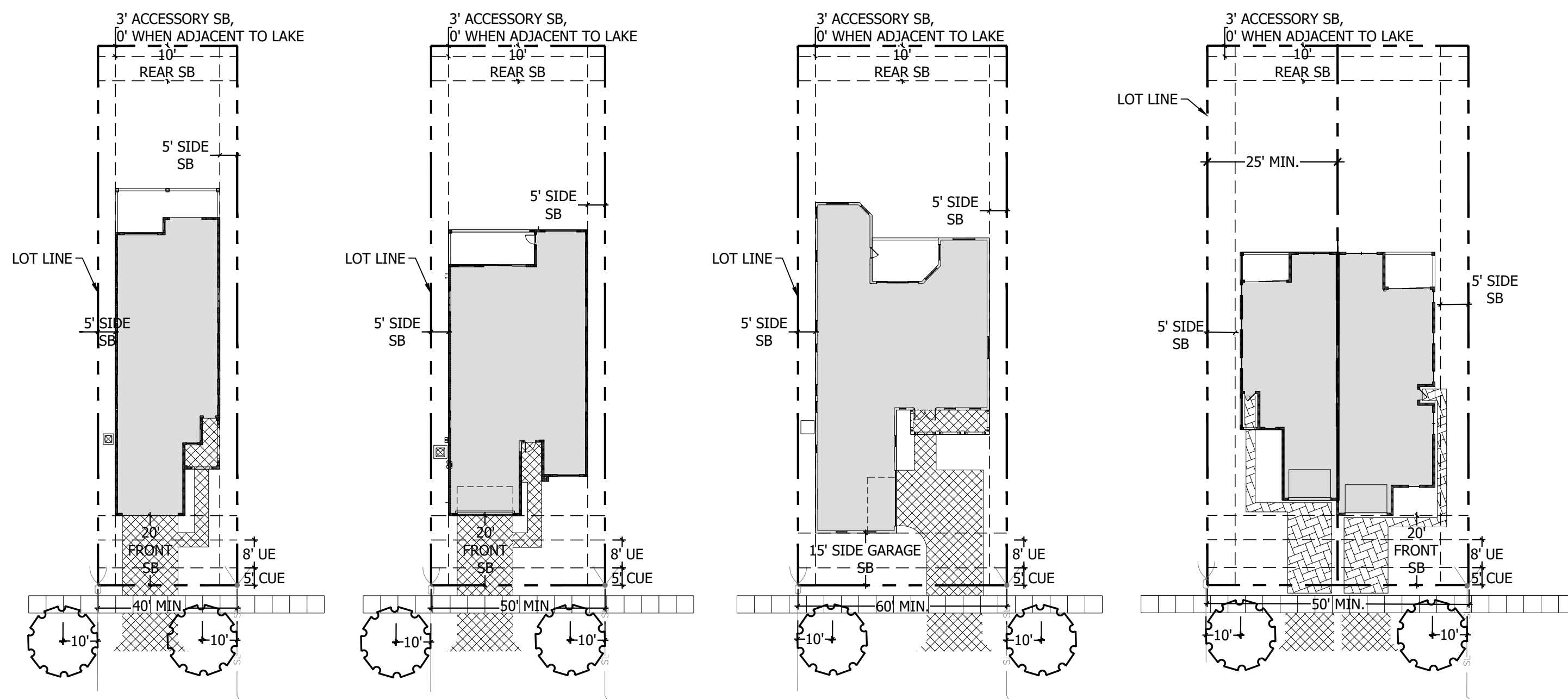
VERANO SOUTH POD G
 Koiter Homes
 Port St. Lucie, Florida

DESIGNED	LAH
DRAWN	LAH/ACE
APPROVED	DTS
JOB NUMBER	18-1003.03
DATE	01-19-22
REVISIONS	02-23-22
	05-24-22

LANDSCAPE SCHEDULE

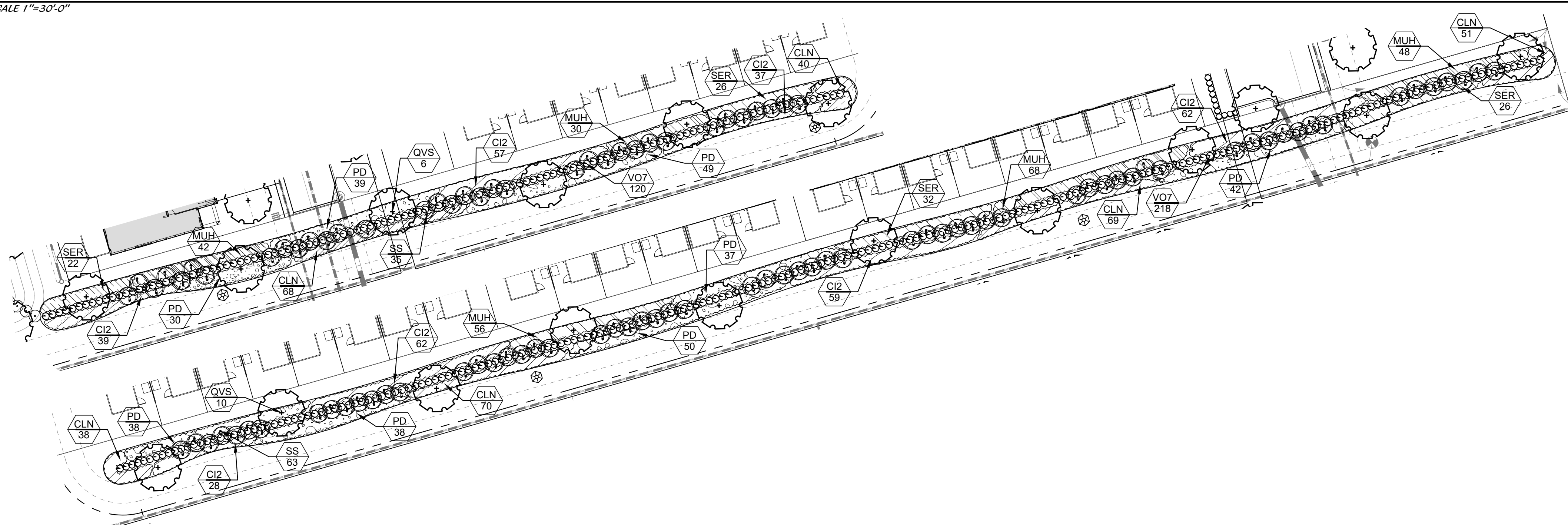
TREES	QTY	BOTANICAL NAME	COMMON NAME	CONT	CAL	SIZE	NATIVE	REMARKS
BIS2	2	BISMARCKIA NOBILIS 'SILVER SELECT'	BISMARCK PALM	NA	NA	6' C.T.	N	FULL CANOPY, 15 LEAF COUNT MIN.
ED	14	ELAEOCARPUS DECIPENS	JAPANESE BLUEBERRY TREE	30 gal	3" Cal	8' O.A.	N	CONICAL, FULL TO BASE, MATCHED
LJ	8	LIGUSTRUM JAPONICUM	JAPANESE PRIVET	45 GAL	2" Cal	8'-10' HT., 6'-8' SPD.	Y	FULL CANOPY, MULTI TRUNK, LIMB UP 3'
QV*	2	QUERCUS VIRGINIANA	LIVE OAK	100 GAL	3.5" CAL	12' OA	Y	FLORIDA #1, DOUBLE DUG ROOT BALL
QVS	711	QUERCUS VIRGINIANA 'SKY CLIMBER'	SKY CLIMBER LIVE OAK	NA	3" CAL	14' HT	Y	FULL CANOPY, DOUBLE DUG
QVS4	90	QUERCUS VIRGINIANA 'SKY CLIMBER'	SKY CLIMBER LIVE OAK	NA	4" CAL	16' OA	Y	FULL CANOPY, DOUBLE DUG
PALM TREES	QTY	BOTANICAL NAME	COMMON NAME	CONT	CAL	SIZE	NATIVE	REMARKS
RE*	4	ROYSTONIA ELATA	ROYAL PALM	FIELD GROWN	NA	18' CT	Y	FULL CANOPY, FLORIDA FANCY
SS	121	SABAL PALMETTO	CURVED CABBAGE PALM	B & B	NA	10', 16', OR 22' CT, STGG	Y	STRONG, UNIQUE CURVES, SLICK TRUNKS
SHRUBS	QTY	BOTANICAL NAME	COMMON NAME	CONT	SIZE	SPACE	NATIVE	REMARKS
CLD	970	CLUSIA GUTTIFERA	SMALL-LEAF CLUSIA	15 GAL	5'-6" O.A	3'-4" O.C.	Y	FULL & THICK, FLORIDA FANCY
PM7	115	PODOCARPUS MAKII	PODOCARPUS	7 GAL	4' X 2'	2' OC	N	FULL & THICK.
VO15	999	VIBURNUM ODORATISSIMUM	SWEET VIBURNUM	15 GAL	4'-5" OA	4' OC	N	FULL & THICK
VO7	494	VIBURNUM ODORATISSIMUM	SWEET VIBURNUM	7 GAL	3' X 3'	3' OC	N	FULL & THICK
GROUND COVERS	QTY	BOTANICAL NAME	COMMON NAME	CONT	SIZE	SPACE	NATIVE	REMARKS
CG2	163	CARISSA MACROCARPA 'GREEN CARPET'	GREEN CARPET NATAL PLUM	3 GAL	2' X 2'	2' OC	N	FULL & THICK
CIG2	34	CHRYSOBALANUS ICACO	GREEN COCOPLUM	7 GAL	3' OA	2.5' OC	Y	FULL & THICK
CI2	432	CHRYSOBALANUS ICACO 'RED TIP'	RED TIP COCOPLUM	7 GAL	3' OA	2.5' OC	Y	FULL & THICK
CLN	664	CLUSIA GUTTIFERA 'NANA'	DWARF CLUSIA	3 GAL	2' X 2'	2' OC	N	FULL & THICK, FLORIDA FANCY
FG	210	FICUS MICROPHYLLA VAR. FUYUENSIS	GREEN ISLAND FICUS	3 GAL	2' X 2'	2' OC	N	FULL & THICK, FLORIDA FANCY
IX	95	IXORA X 'MAUI YELLOW'	YELLOW MAUI IXORA	3 GAL	2' X 2'	2' OC	N	FULL & THICK
MUH	279	MUHLENBERGIA CAPILLARIS	PINK MUHLY GRASS	3 GAL	2' X 2'	2' OC	Y	FULL & THICK
PD	396	PODOCARPUS MACROPHYLLUS 'MAKI'	MAKI PODOCARPUS	7 GAL	3' OA	3' OC	N	FULL & THICK
RDK	64	ROSA 'KNOCKOUT'	RED KNOCKOUT ROSE	3 GAL	2' HT., 2' SPD., 2' OC.	2' OC.	N	FULL & THICK, UNIFORM GROWTH
SAV	121	SHEFFLERA ARBORICOLA 'TRINETTE'	DWARF VARIEGATED SCHEFFLERA	3 GAL	1.5' X 1.5'	2' OC	N	FULL & THICK
SER	138	SERENOA REPENS SILVER	SAW PALMETTO	7 GAL	3' OA	3' OC	Y	FULL & THICK
TF	9	TRIPSACUM FLORIDANA	DWARF FAKAHATCHEE GRASS	3 GAL	2' X 2'	2.5' OC	Y	FULL & THICK

TYPICAL DRIVEWAY CONFIGURATION

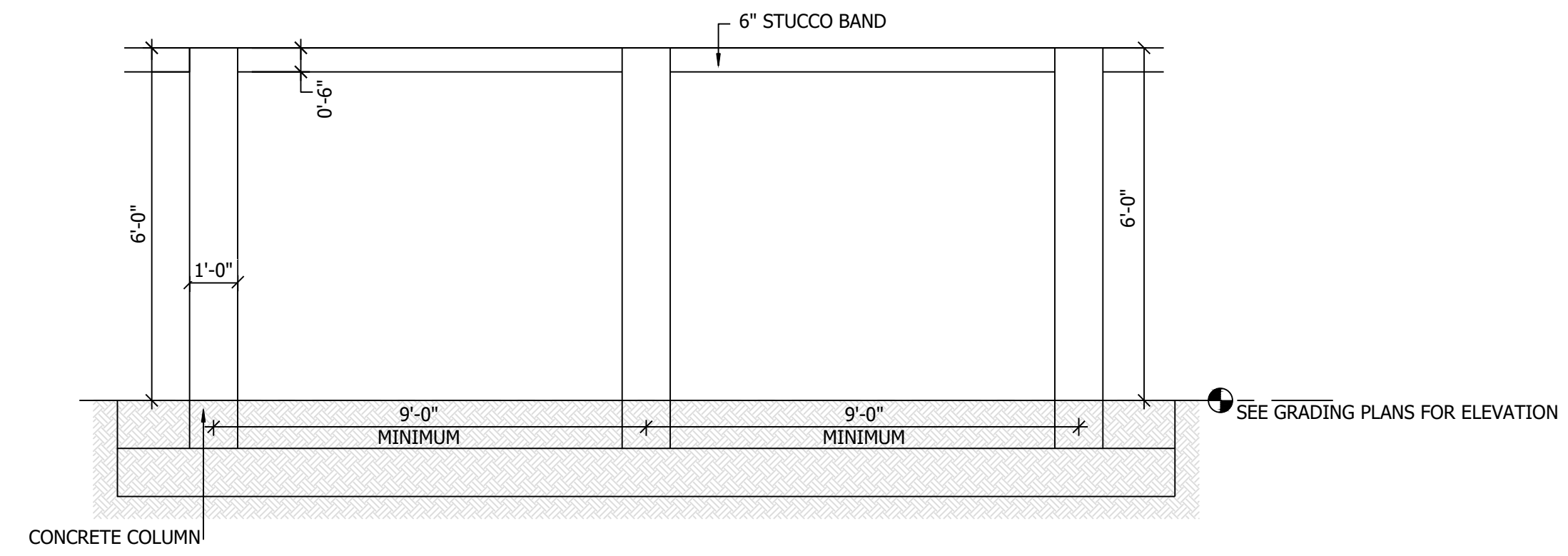


COMMON AREAS 1 & 9 (SEE SHEET 3)

SCALE 1"=30'-0"



TYPICAL WALL DETAIL



*NOTE: WALL CONSTRUCTION TO BE DETERMINED BY CONTRACTOR AT TIME OF BUILDING.

TYPICAL FENCE DETAIL



GENERAL NOTES:
 *MATERIAL: BLACK VINYL CHAIN LINK FENCE
 *6 FT
 *MANUFACTURER TO BE CHOSEN BY CONTRACTOR

Cotleur & Hearing
 Landscape Architects
 Land Planners
 Environmental Consultants
 1934 Commerce Lane
 Suite 1
 Jupiter, Florida 33458
 561.747.6336 • Fax 747.1377
 www.cotleurhearing.com
 Lic# LC-C000239

VERANO SOUTH POD G
 Koiter Homes
 Port St. Lucie, Florida

DESIGNED	LAH
DRAWN	LAH/ACE
APPROVED	DTS
JOB NUMBER	18-1003.03
DATE	01-19-22
REVISIONS	02-23-22
	05-24-22

PSLUSD #11-652-36B
PSL PROJ# P22-019
POD G PLAT 2
LANDSCAPE DETAILS