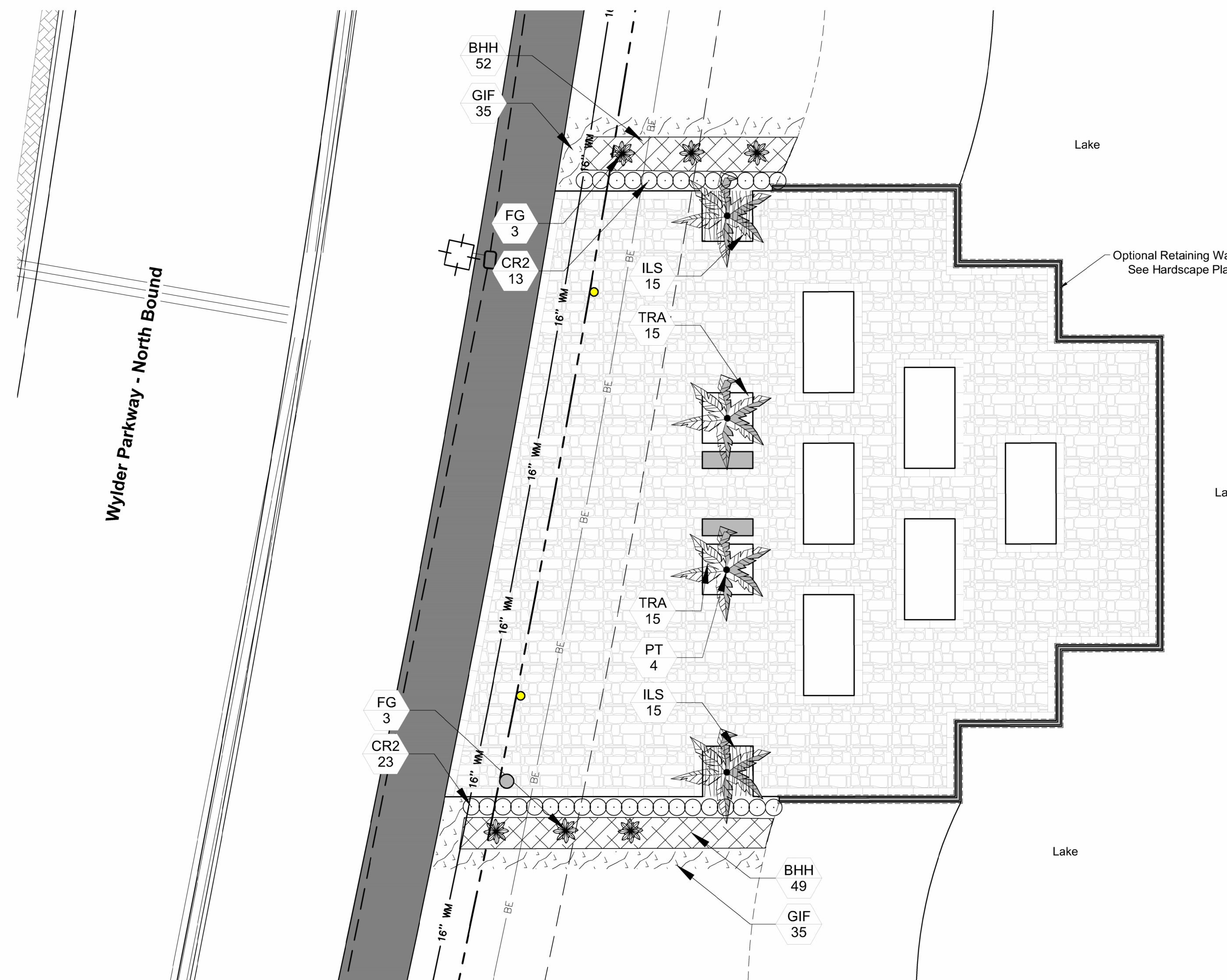
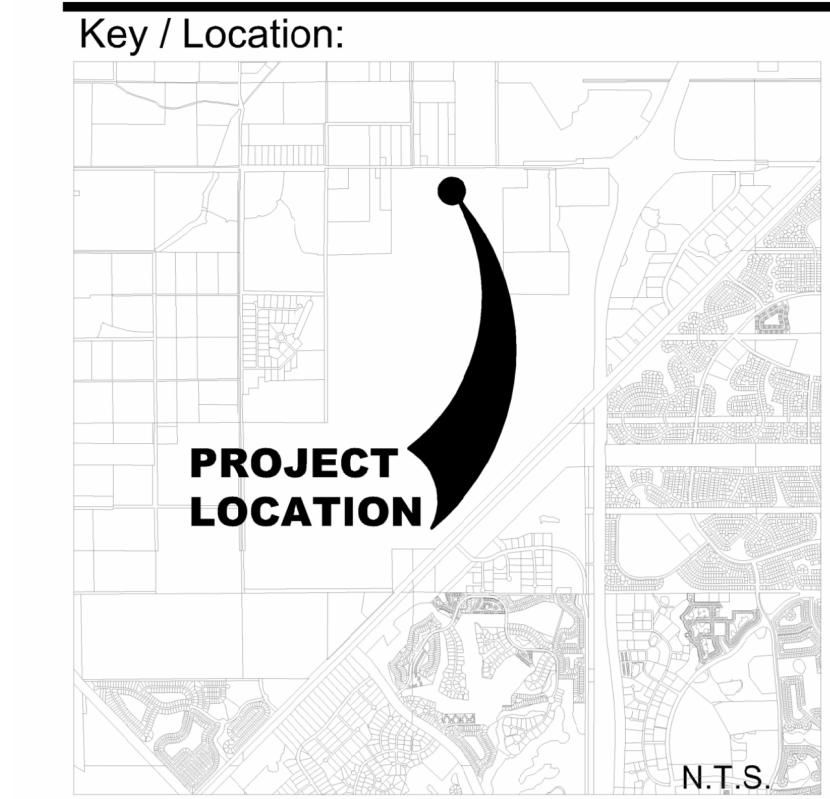


West Side Art In Public Places Landscape Plan - Phase 1
 Residential Public Art Requirement
 Scale: 1" = 10'



Future East Art In Public Places Landscape Plan - Phase 2
 Remaining Residential & Commercial Public Art Requirement
 Scale: 1" = 10'



Project Team:

Client & Property Owner: Midway Glades Developer
 7807 Baymeadows Road, Suite 205
 Jacksonville, Florida 32256

Land Planner / Landscape Architect: Lucido & Associates
 701 East Ocean Boulevard
 Stuart, Florida 34994

Engineer: Kimley Horn And Associates
 445 24th Street, Suite 200
 Vero Beach, Florida 32960

Surveyor: Kimley Horn And Associates
 445 24th Street, Suite 200
 Vero Beach, Florida 32960

Wylder
Art In Public Places
Landscape Plan

Port St Lucie, Florida
 P22-278
 PSLUSD# xx-xxx-xx

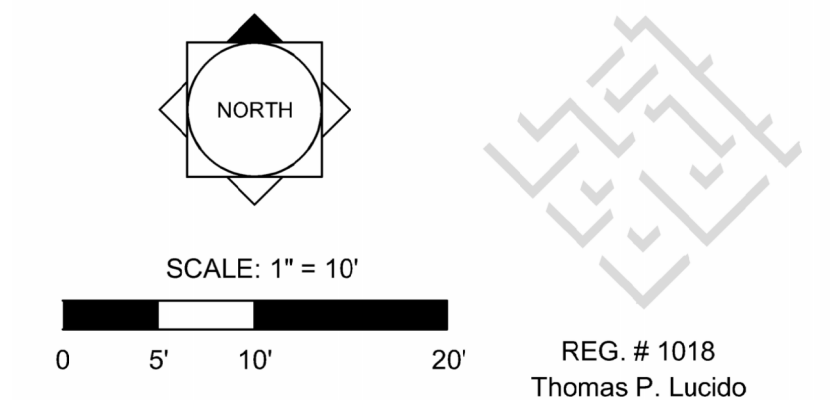
Date	By	Description
01.24.24	SJS	Client Review
02.09.24	SJS	Revised

SYMBOL	CODE	QTY	BOTANICAL NAME	COMMON NAME	CONTAINER	HEIGHT	WIDTH	NOTES	NATIVE	SPACING
TREES										
	PT	4	Plychosperma elegans	Alexander Palm	CG	12' HT				
SHRUBS										
	CR2	33	Chrysobalanus icaco 'Red Tip'	Red Tip Cocoplum	3G	24" HT	24"W	F, SP	Native	
	FG	8	Furcraea foetida 'Variegata'	Variegated False Agave	7G	30" OA		SP	Non-native	
SHRUB AREAS										
	BHH	109	Bougainvillea x 'Helen Johnson'	Helen Johnson Compact Bougainvillea	3G	12"HT	12" SPR	F		18" o.c.
GROUND COVERS										
	GIF	75	Ficus microcarpa 'Green Island'	Green Island Ficus	1G	12"HT	12"W	Full		18" o.c.
	ILS	30	Ilex vomitoria 'Stokes Dwarf'	Dwarf Yaupon	1G	12"HT	12"W	Full	Native	18" o.c.
	TRA	30	Trachelospermum asiaticum 'Asiatic'	Asiatic Jasmine	1G	12" OA		F		18" o.c.

West Side Plant Schedule

SYMBOL	CODE	QTY	BOTANICAL NAME	COMMON NAME	CONTAINER	HEIGHT	WIDTH	NOTES	NATIVE	SPACING
TREES										
	PT	4	Plychosperma elegans	Alexander Palm	CG	12' HT				
SHRUBS										
	CR2	33	Chrysobalanus icaco 'Red Tip'	Red Tip Cocoplum	3G	24" HT	24"W	F, SP	Native	
	FG	6	Furcraea foetida 'Variegata'	Variegated False Agave	7G	30" OA		SP	Non-native	
SHRUB AREAS										
	BHH	108	Bougainvillea x 'Helen Johnson'	Helen Johnson Compact Bougainvillea	3G	12"HT	12" SPR	F		18" o.c.
GROUND COVERS										
	GIF	75	Ficus microcarpa 'Green Island'	Green Island Ficus	1G	12"HT	12"W	Full		18" o.c.
	ILS	34	Ilex vomitoria 'Stokes Dwarf'	Dwarf Yaupon	1G	12"HT	12"W	Full	Native	18" o.c.
	TRA	34	Trachelospermum asiaticum 'Asiatic'	Asiatic Jasmine	1G	12" OA		F		18" o.c.

Future East Side Plant Schedule



REG. # 1018
 Thomas P. Lucido

Designer: SJS
 Manager: SG
 Project Number: 20-535
 Municipal Number: P
 Computer File: 20-535 - Wylder AIPP At Commercial - Site Plan.dwg

Sheet
LA1

© Copyright Lucido & Associates. These documents and their contents are the property of Lucido & Associates. Any reproductions, revisions, modifications or use of these documents without the express written consent of Lucido & Associates is prohibited by law.